



HAKVOORT 70 TSDY

BROKER'S COMMENTS

With a gloriously luxurious interior by Pieter Beeldsnijder Design, "Belle de Jour" is the most elegant of super yachts. Her many special features include a parking facility on the fly bridge for the owner's car. The craftsmanship is remarkably detailed and the yacht's beautifully finished interior contains an array of eye-catching features. Due to her age an exterior refit is advised.

Reinier van der Wolf

SPECIFICATIONS

Dimensions	21.20 x 5.80 x 1.90 (m)	Builder	Hakvoort Shipyard B.V. - M'dam
Built	1993	Cabins	3
Material	Steel	Berths	7
Engine(s)	2 x MAN 2866 LE Diesel	Hp/Kw	2 x 440.00 (hp), 323.40 (kw)
Asking price	sold (VAT)	Lying	at sales office

CONTACT

Sales office	De Valk Monnickendam	Telephone	+31 299 65 63 50
Address	Hoogedijk 6 1145 PM Katwoude The Netherlands	E-mail	monnickendam@devalk.nl

DISCLAIMER

These particulars are given in good faith as supplied but cannot be guaranteed.



GENERAL

Model	HAKVOORT 70 TSDY
Type	motor yacht Motor
LOA (m)	21,20
Beam (m)	5,80
Draft (m)	1,90
Air draft (m)	9,30
Headroom (m)	2,13
Year built	1993
Builder	Hakvoort Shipyard B.V. - M'dam
Country	The Netherlands
Designer	Pieter Beeldsnijder
Displacement (t)	41
CE norm	NA
Hull material	steel
Hull colour	White
Hull shape	Roundbilged
Superstructure material	Aluminium
Flybridge	fly bridge with steering position, cosy round seat, small galley.
Radar arch	yes
Fuel tank (litre)	Steel 11.355 (3+1)
Freshwater tank (litre)	2.933
Greywater tank (litre)	Steel 756 + 945
Wheel steering	Hydraulic
Outside helm position	Hydraulic
Extra info	Teak deck needs to be replaced. Exterior of the boat needs a new paintjob.

ACCOMMODATION

Cabins	3
Berths	7



HAKVOORT 70 TSDY

Interior	ash
Floor	Teak and Holly
Open cockpit	aft deck with large settee and table and an "easy to walk" stairs to fly bridge
Pilot house	wheelhouse with navigation area with two large chairs, large U-shaped settee with blue leather upholstery and large table, two sliding doors to the side decks, stairs to the fly bridge, colored single glass.
Saloon	L-shaped settee and chair
Headroom saloon (m)	2,13
Heating	electric 220V
Air-conditioning	yes
Galley	U-shaped
Countertop	Corian
Sink	Stainless steel
Cooker	Keramic Gaganau
Oven	yes
Extractor	yes
Microwave	Panasonic
Fridge	Liebherr
Freezer	Liebherr
Hot water system	220v + engine Boiler
Water pressure system	Electrical
Dishwasher	Miele
Owners cabin	French bed
Bathroom	en suite
Toilet	
Toilet system	Electric
Wash basin	2x
Shower	
Bath tub	
Guest cabin 1	French bed
Bathroom	En suite



Toilet	
Toilet system	Electric
Wash basin	yes
Shower	
Guest cabin 2	3 pers.
Bathroom	en suite
Toilet	
Toilet system	Electric
Wash basin	yes
Shower	
Washing machine	Miele
Dryer	Miele
Extra info	Large owners cabin amidships with king-size berth, lots of cupboards, en suite bathroom with full marble floors and countertops, Corian tops in guest heads, chilled water air-condition system.

MACHINERY

No of engines	2
Make	MAN
Type	2866 LE
HP	440,00
kW	323,40
Fuel	diesel
Maximum speed (kn)	12
Engine cooling system	freshwater heat exchanger
Drive	shaft
Engine controls	electrical
Gearbox	Hydraulic
Bowthruster	Hydraulic (2007) + MMC
Exhaust	watercooled
Propeller shaft material	Stainless steel



Generator	2x Norhternlight - 30 kW (2006)
Generator 2	yes
Service battery	1.080 Amp board net 24V - 2V Glaspack cels
Battery charger	2x Victron 24/100 Amp
Inverter	Victron 24/3000W
Shorepower	12V/24V/230V/380V
Insulation transformer	Atlas 50/60hz isolator / transformer
Stabilizers	Koopnautic stabilizers (2007 + 2x PTO) (needs service)
Extra info	Fuel management system, fuel cleaning system , two cameras in engine room, CSI alarm system for bilge/ oil pressure / cool water temp. / cool water level / oil level.

NAVIGATION

Compass	yes
Electric compass	Raymarine ST 80
Depth sounder	Raymarine ST 80
Log	VDO Logic
VHF	Sailor RT 2047 (not connected - no Atis))
VHF handheld	RadioOcean Pocket 2400
Autopilot	Robertson AP45
Rudder angle indicator	R145
GPS	Raytheon RN300
Radar/GPS/plotter	Raymarine full color plotter/radar/AIS/GPS
Radio receiver	Skanti HF SSB TRP 7000 radio system (not connected)
Extra info	Also depth sounding function in Raymarine E80, Raymarine E120 plotter / radar / AIS, computer with Raymarine Raytech RNS plotter software, including AIS on Samsung 20' screen.

EQUIPMENT

Bathing platform	integrated bathing platform, steps laid with teak
Boarding ladder	Marquipt hydraulic
Windlass	Hydraulic Maxwell 3500 (engine 2007)



Capstan	on aft deck 2x Maxwell 800
Deck crane	Marquipt hydraulic crane for dinghy (controls of 2007)
Sea railing	Teak
Wiper	3x
Extra info	Demister for wheel house front windows, KVH Tracphone satellite telephone.





BROKERAGE | CHARTER | BERTHS | FINANCE | INSURANCE | YACHT MANAGEMENT



**This yacht will be auctioned,
for further details please visit www.devalk.nl**

**Dit schip zal worden geveild,
voor meer informatie gaat u naar www.devalk.nl**

**Dieses Schiff wird versteigert,
für weitere informationen besuchen Sie www.devalk.nl**

WWW.DEVALK.NL



DE VALK
YACHT BROKERS





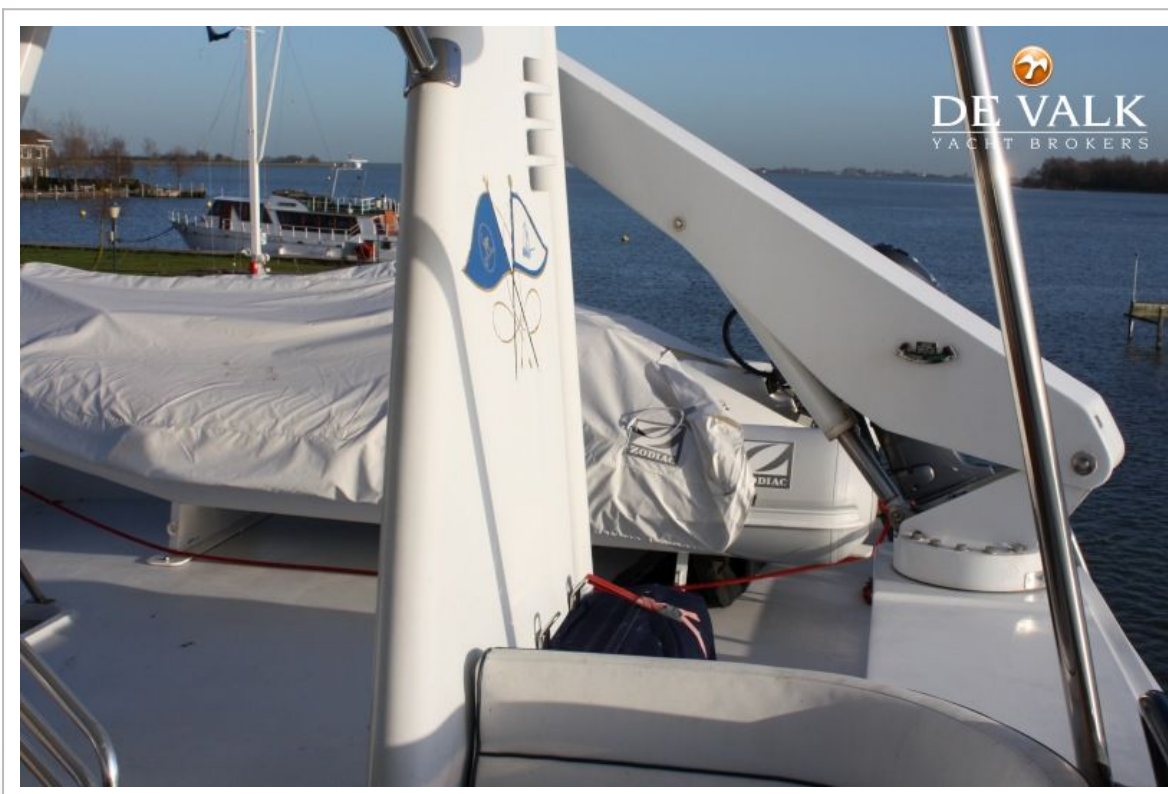
HAKVOORT 70 TSDY

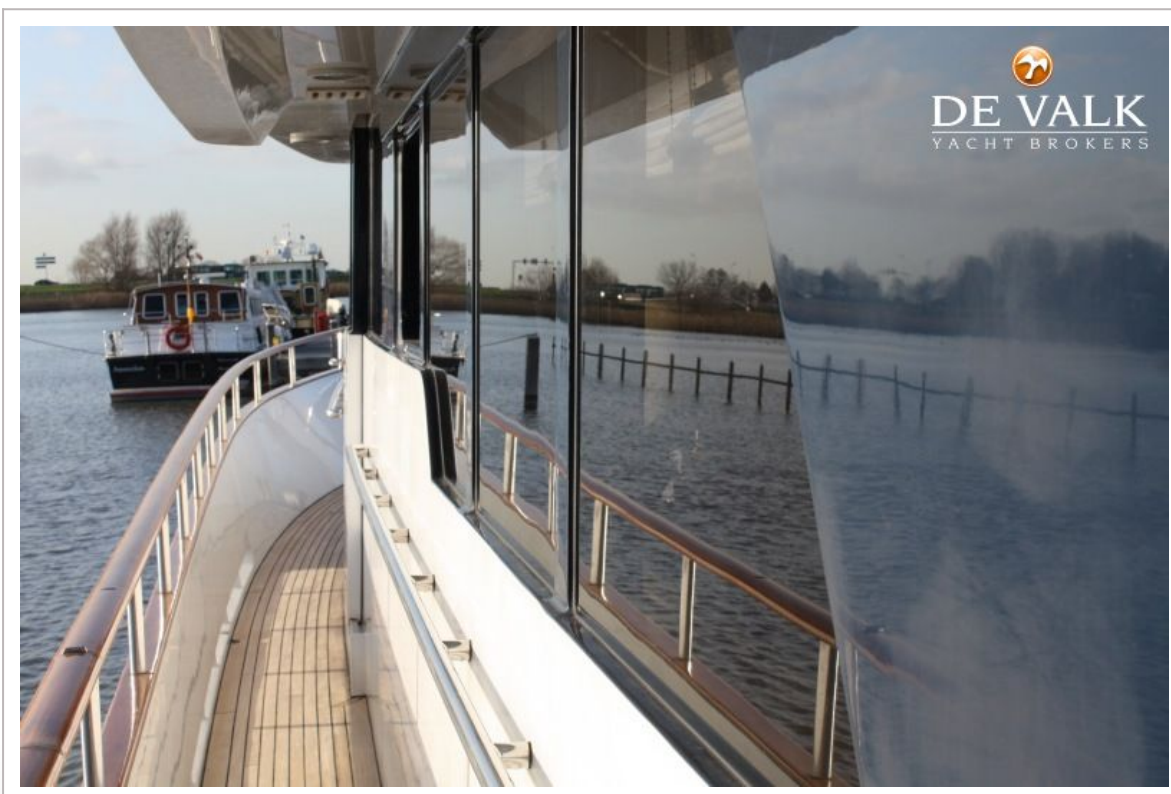


HAKVOORT 70 TSDY



HAKVOORT 70 TSDY



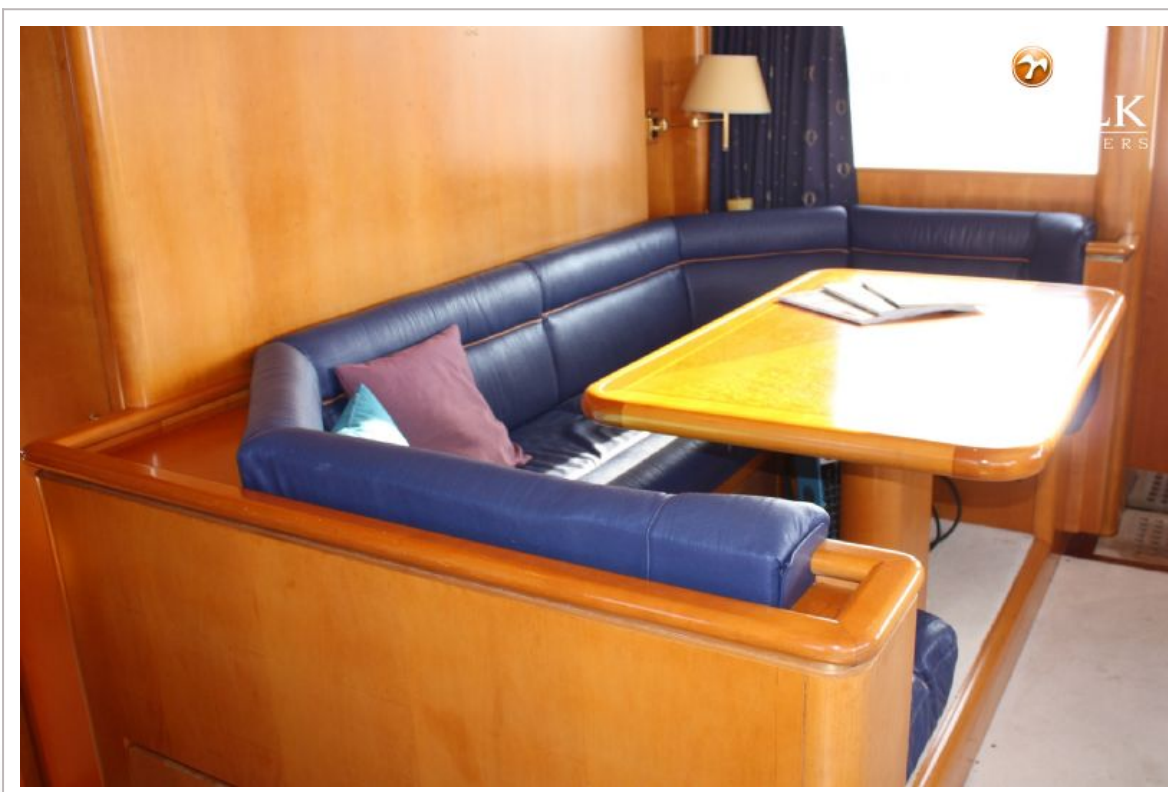




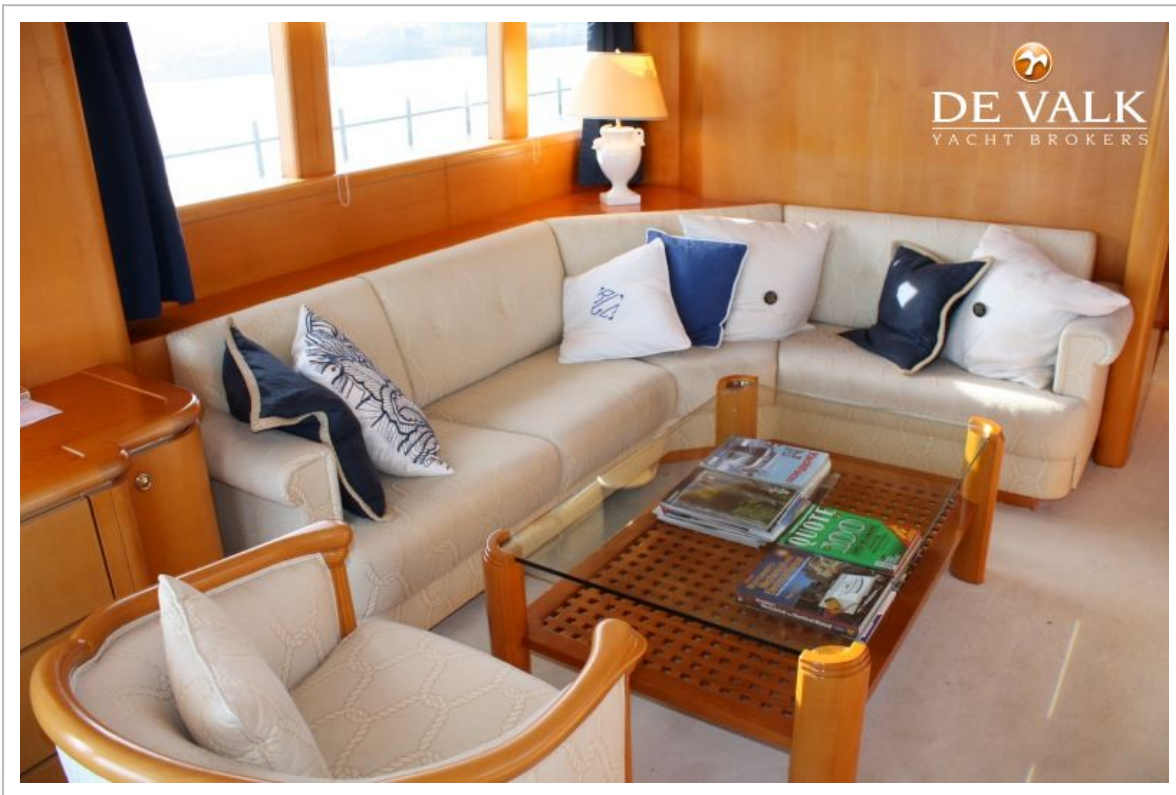
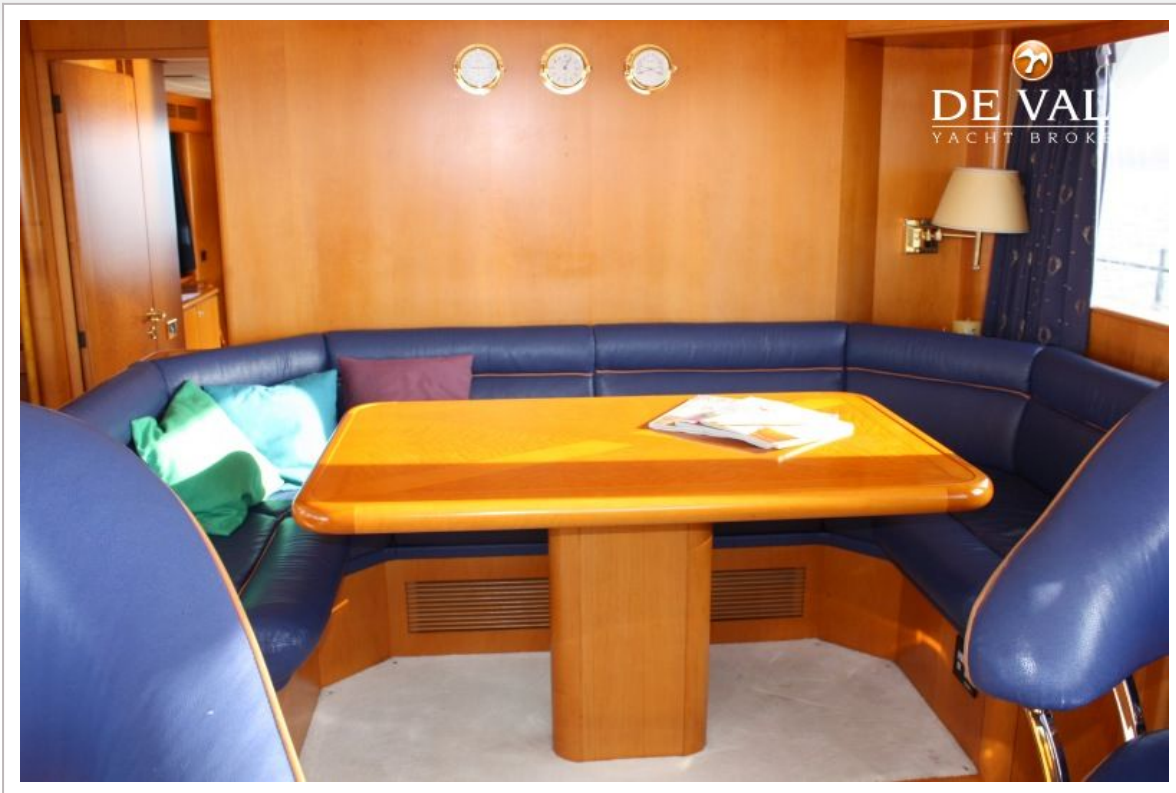


HAKVOORT 70 TSDY

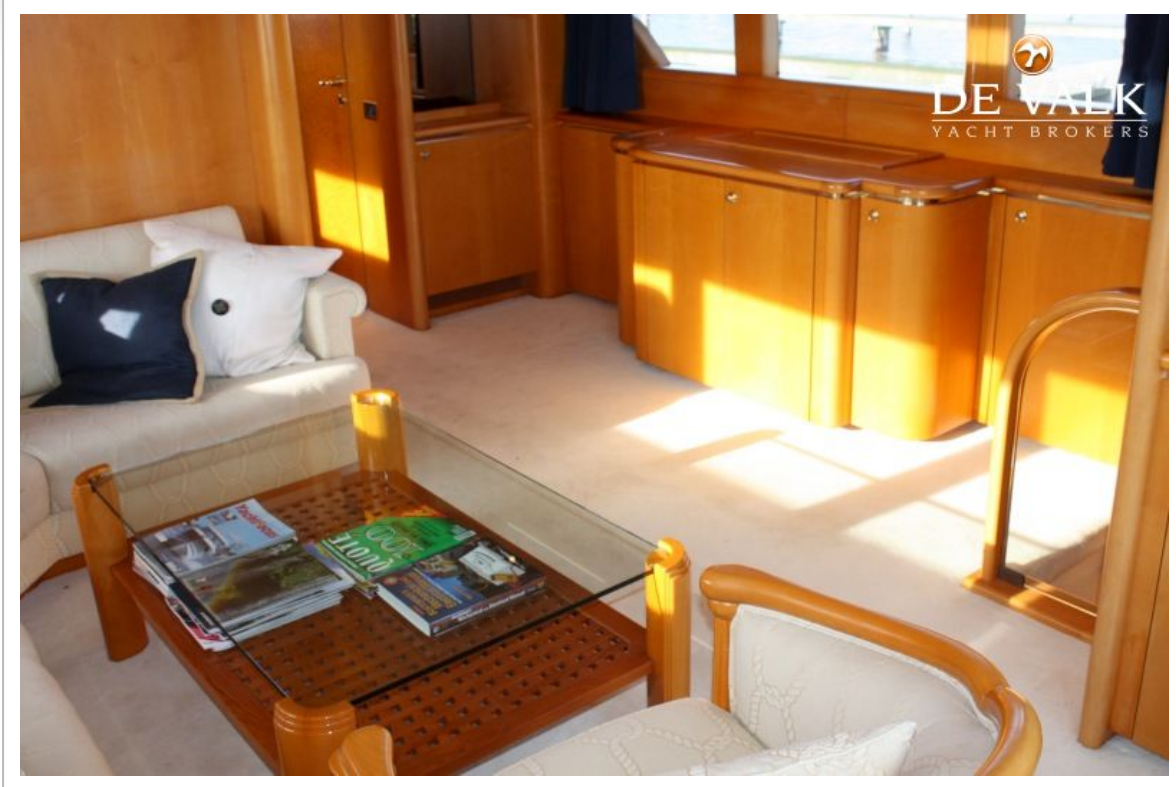




HAKVOORT 70 TSDY



HAKVOORT 70 TSDY



HAKVOORT 70 TSDY









