



DE VALK
YACHT BROKERS



STURIER 675 OC



DE VALK
YACHT BROKERS

BROKER'S COMMENTS

Sturier 675 OC build in 2007 at Jachtwerf Volharding Staveren, CE-A. Well equipped motor yacht, steel, round bilged, stabilizers, three cabins and one guestcabin/crewcabin. Spacious saloon with helmposition and door. Two MAN diesel engines, hydraulic bow-and sternthruster, two Fisher Panda generators, Kabola central heating and Webasto airconditioning. The Hull is freshly painted (02-2020) and the teakdecks are checked and sanded. Come over to our covered sales marina in Sneek for a viewing of this beautiful motor yacht!

Arne Doodeman

SPECIFICATIONS

Dimensions	20.60 x 5.75 x 1.70 (m)	Builder	Jachtwerf Volharding Staveren
Built	2007	Cabins	4
Material	Steel	Berths	8
Engine(s)	2 x MAN 2866LXE40 diesel	Hp/Kw	2 x 396.00 (hp), 291.06 (kw)
Asking price	sold (VAT)	Lying	at sales office

CONTACT

Sales office	De Valk Sneek	Telephone	+31 515 42 80 30
Address	Zwolsmanweg 7 8606 KC Sneek The Netherlands	E-mail	sneek@devalk.nl

DISCLAIMER

These particulars are given in good faith as supplied but cannot be guaranteed.



STURIER 675 OC

GENERAL

Model	STURIER 675 OC
Type	motor yacht
LOA (m)	20,60
LWL (m)	18,30
Beam (m)	5,75
Draft (m)	1,70
Air draft (m)	5,30
Headroom (m)	2,10
Year built	2007
Builder	Jachtwerf Volharding Staveren
Country	The Netherlands
Designer	Jachtwerf Volharding Staveren
Displacement (t)	62
CE norm	A
Hull material	steel
Hull colour	green Hull painted 02-2020
Hull thickness (mm)	5mm and 6mm
Hull shape	round-bilged
Superstructure material	steel
Superstructure (mm)	5mm
Deck plate thickness (mm)	5mm
Rubbing strake	stainless steel
Deck material	steel
Deck finish	teak Checked and sanded 02-2020
Superstructure deck finish	non-skid paint
Cockpit deck finish	teak
Dorades	4 x stainless steel
Window frame	aluminium
Window material	double glazing Gebo
Deckhatch	3 x Gebo



STURIER 675 OC

Mast can be lowered	hydraulic
Fuel tank (litre)	steel 6000L
Level indicator (fuel tank)	VDO
Fuel daytank (litre)	steel 500
Freshwater tank (litre)	2500L
Level indicator (freshwater)	VDO
Blackwater tank (litre)	550L
Blackwater tank extraction	550L
Wheel steering	hydraulic
Inside helm position	yes
Outside helm position	electric
More info on paintwork	Hull is painted 02-2020

ACCOMMODATION

Cabins	4
Berths	8
Crew cabin	yes
Floor	teak and holly Carpet and teak
Aft deck	yes
Sliding roof	2 x in the wheelhouse
Heating	central heating Kabola B17
Air-conditioning	Webasto
Dinette	yes
Opening door to aft deck	yes
Galley	yes
Countertop	corian
Sink	stainless steel Double sink
Cooker	induction AEG 4 burner induction
Extractor	yes
Microwave/oven combi	Bosch Gourmet
Fridge	2 x 115L Coolmatic fridge



STURIER 675 OC

Freezer	115L Coolmatic
Hot water system	on central heating Boiler
Water pressure system	electrical
Owners cabin	French bed Full beam owners cabin in midship
Wardrobe	hanging/drawers/shelves
Bathroom	en suite
Toilet	en suite
Toilet system	electric Tecma
Wash basin	in the bathroom
Shower	en suite
Guest cabin 1	French bed
Wardrobe	hanging and shelves
Bathroom	shared
Toilet	
Toilet system	electric Tecma
Wash basin	yes
Shower	yes
Guest cabin 2	twin single
Wardrobe	hanging and shelves
Crew cabin(s)	2 single beds
Bathroom (crew)	yes
Toilet (crew)	yes
Toilet system	electric
Wash basin	in the bathroom
Shower (crew)	yes
Washing machine	Bosch Max
Dryer	Bosch Maxx 7

MACHINERY

No of engines	2
Make	MAN



STURIER 675 OC

Type	2866LXE40
HP	396
kW	291,06
Fuel	diesel
Maximum speed (kn)	10,5
Cruising speed (kn)	9
Engine hours	1966
Engine cooling system	freshwater heat exchanger
Drive	shaft
Engine controls	electrical Morse
Gearbox	hydraulic Twindisk MG 5061-A
Bowthruster	hydraulic Proportional
Sternthruster	hydraulic Proportional
Exhaust	watercooled
Thrust bearing	Aquadrive
Propeller type	fixed
Propeller blades	4 bladed
Propeller shaft material	stainless steel 60mm
Shaft lubrication	water
Electric bilge pump	yes
Generator	Fisher Panda 10,5 KW, 230V, serviced 16-1-2019 at 594 hrs
Running hours generator	594 (3-4-2020)
Generator 2	Fisher Panda, 5.5 KW, serviced 7-1-2019 at 1557 hrs
Running hours generator 2	1558 (3-4-2020)
Start battery	2 sets of 2 x 54 ah
Service battery	1 x 24V 1000AH (03-2013)
Generator battery	2 sets of 1x 54 ah
Battery monitor	Mastervolt AC panel, Mastervolt Power system control panel
Battery charger	Mastervolt Mass 24/100, Victron Bluepower 12/15
Inverter	Mastervolt Mass Sine 24/10000
Shorepower	with cable
Insulation transformer	2 x Mastervolt Mass Power 5000 galvanic isolator, Mastervolt Ive



Stabilizers	fin Najad
Extra info	Mastervolt IVET-D30 17,5
Extra info	2 x double Racor fuel filter

NAVIGATION

Electric compass	Simrad IS15
Depth sounder	Simrad IS15
Log	Simrad IS15
Windset	Simrad IS15
VHF	Simrad RS87
Autopilot	2 x Simrad AP25 with Simrad WR20 remote control
Rudder angle indicator	Simrad IS20
Radar	Simrad RW701A-04
GPS	Simrad HS52
Radar/GPS/plotter	Simrad CX44, Simrad CX54,
Personal computer	Laptop
PC connection	Neovo screen
EPIRB	Sailor
Navigation lights	yes
Searchlight	Jabsco
Loudhailer	Simrad
Extra info	Nera satelite phone (not in function)

EQUIPMENT

Fixed windscreen	/
Bimini	yes
Cockpit cushions	yes
Cockpit table	yes
Bathing platform	yes
Boarding ladder	Stainless steel with wooden steps
Transom door	2 x



STURIER 675 OC

Deck shower	yes
Anchor	2 x stainless steel anchor
Anchor chain	Galvanic chain
Windlass	hydraulic Maxwell 3500 2 x winch and capstan
Windlass aft	2 x Maxwell 2200
Deck wash	yes
Deck crane	hydraulic Opacmare 500KG
Sea railing	stainless steel
Grab rail (superstructure)	stainless steel
Railing side opening gates	2 x
Life raft (pers)	container Plastimo transocean 8 (need service)
Wiper	4 heavy duty
Horn	yes
Fenders	yes
Mooring lines	yes
TV	Sharp and 4 x in the cabins
TV receiver	Intellian
Radio-cd player	JVC
Clock - barometer	Altitude clock
Fire extinguisher	yes
Extinguisher in engine room	yes



STURIER 675 OC



STURIER 675 OC



STURIER 675 OC



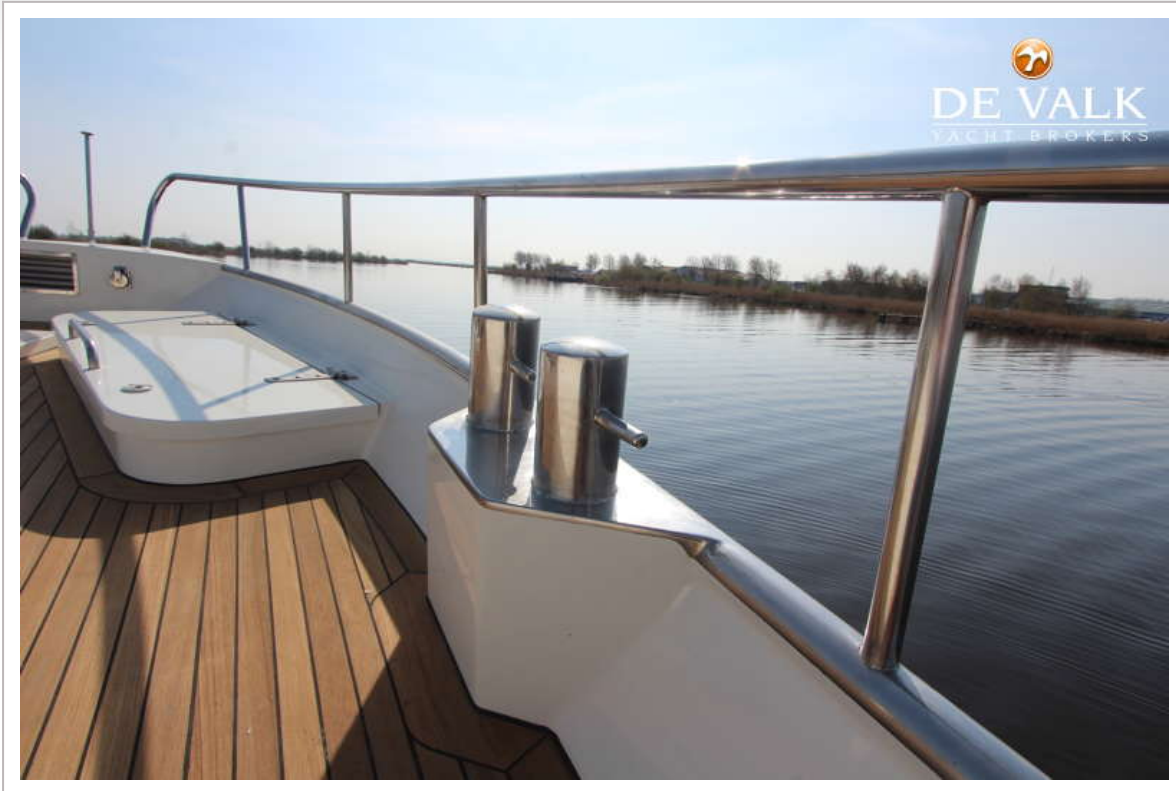
STURIER 675 OC



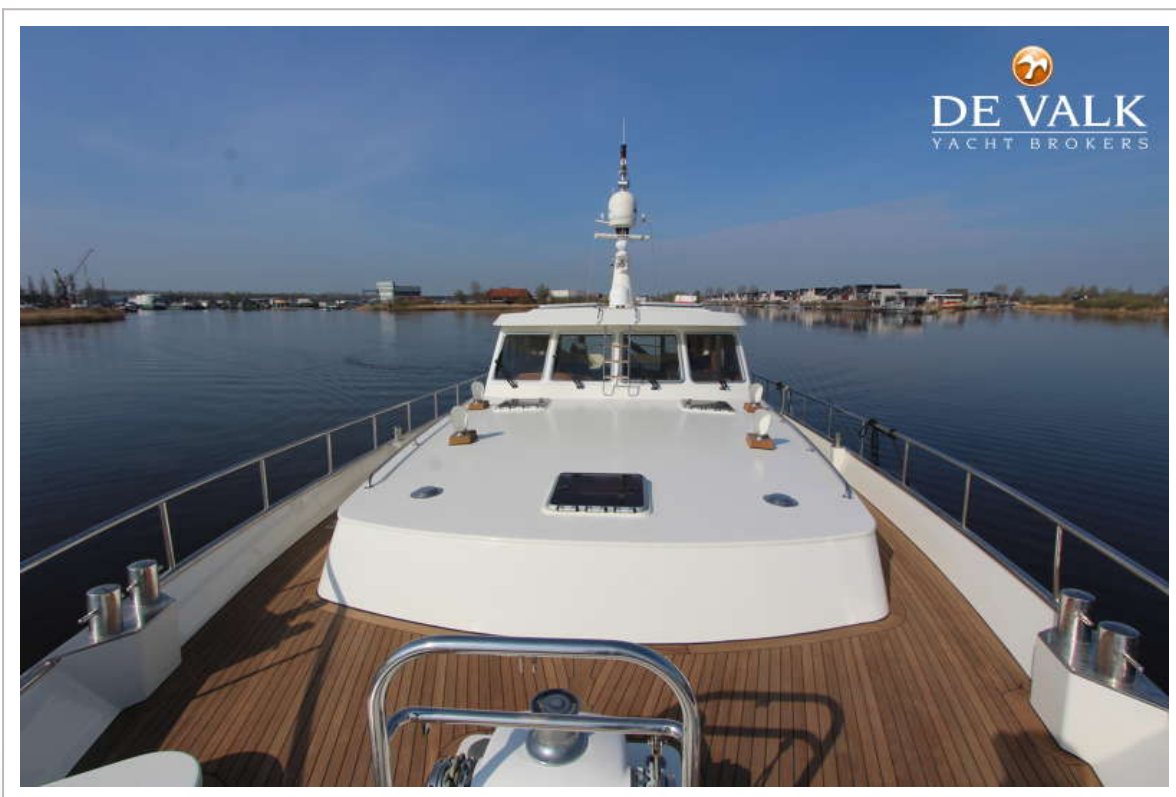
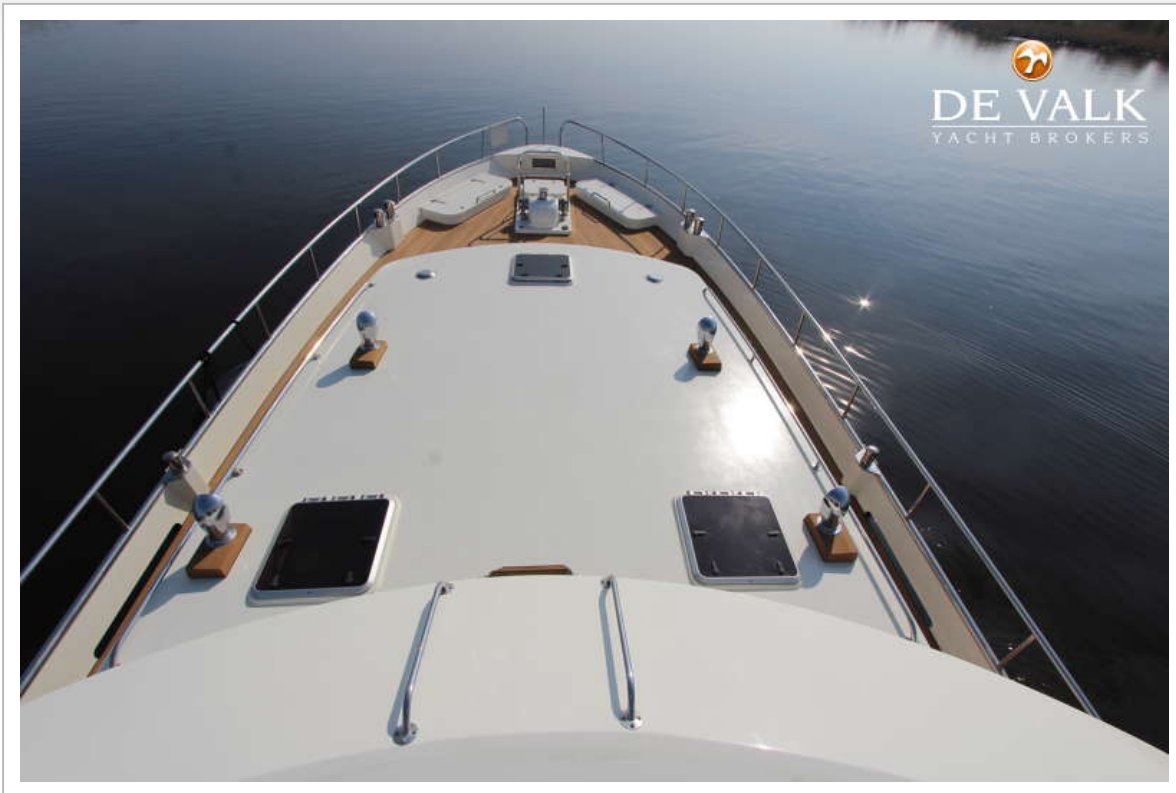
STURIER 675 OC



STURIER 675 OC



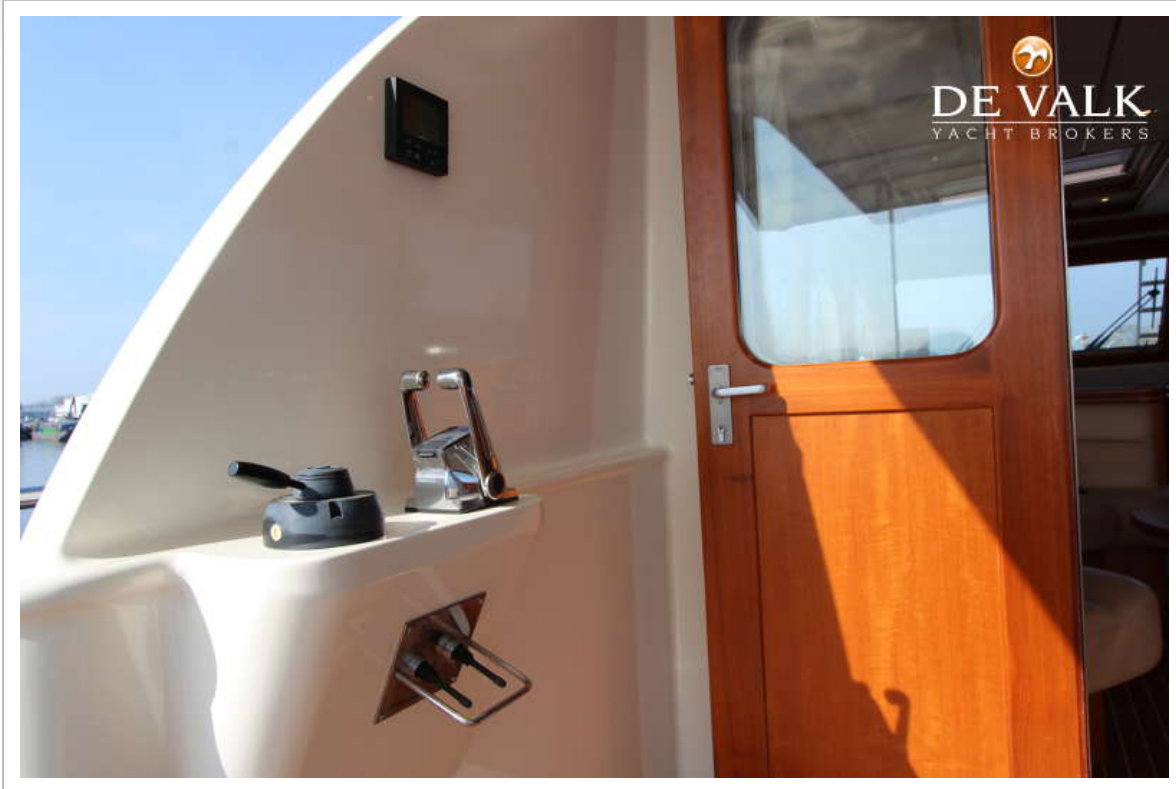
STURIER 675 OC



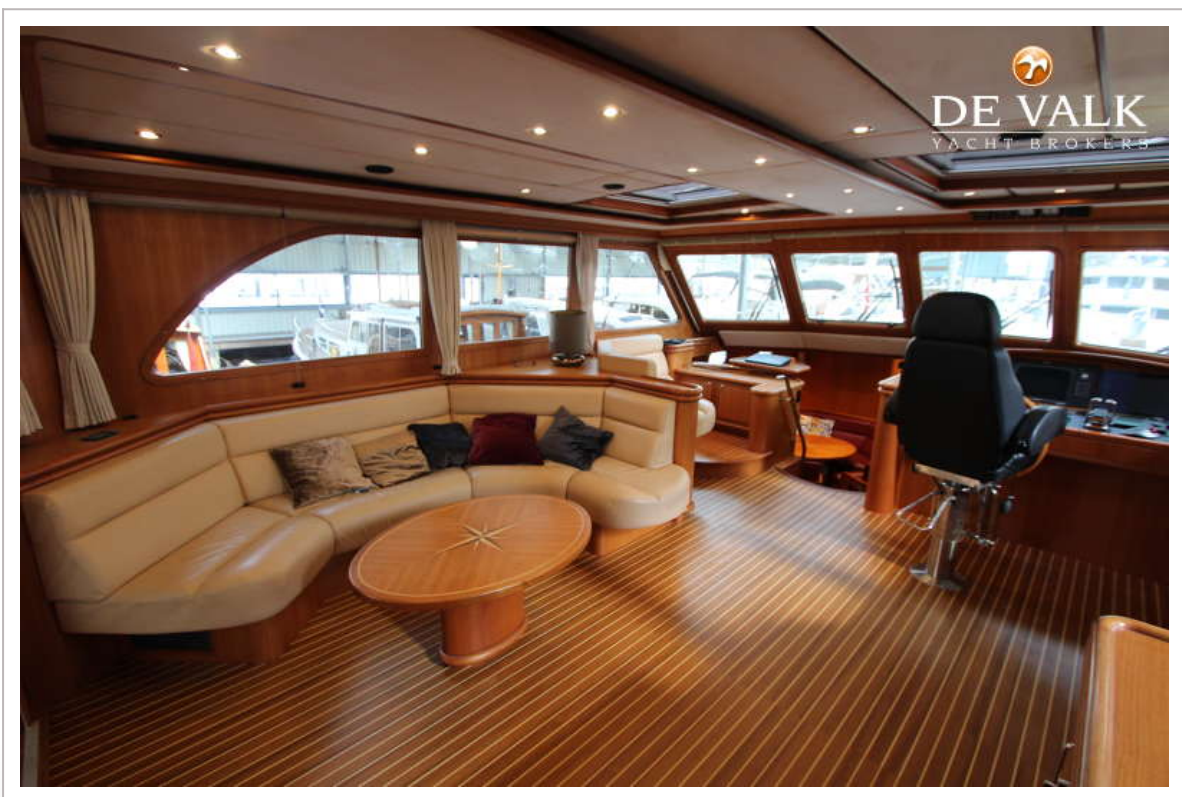
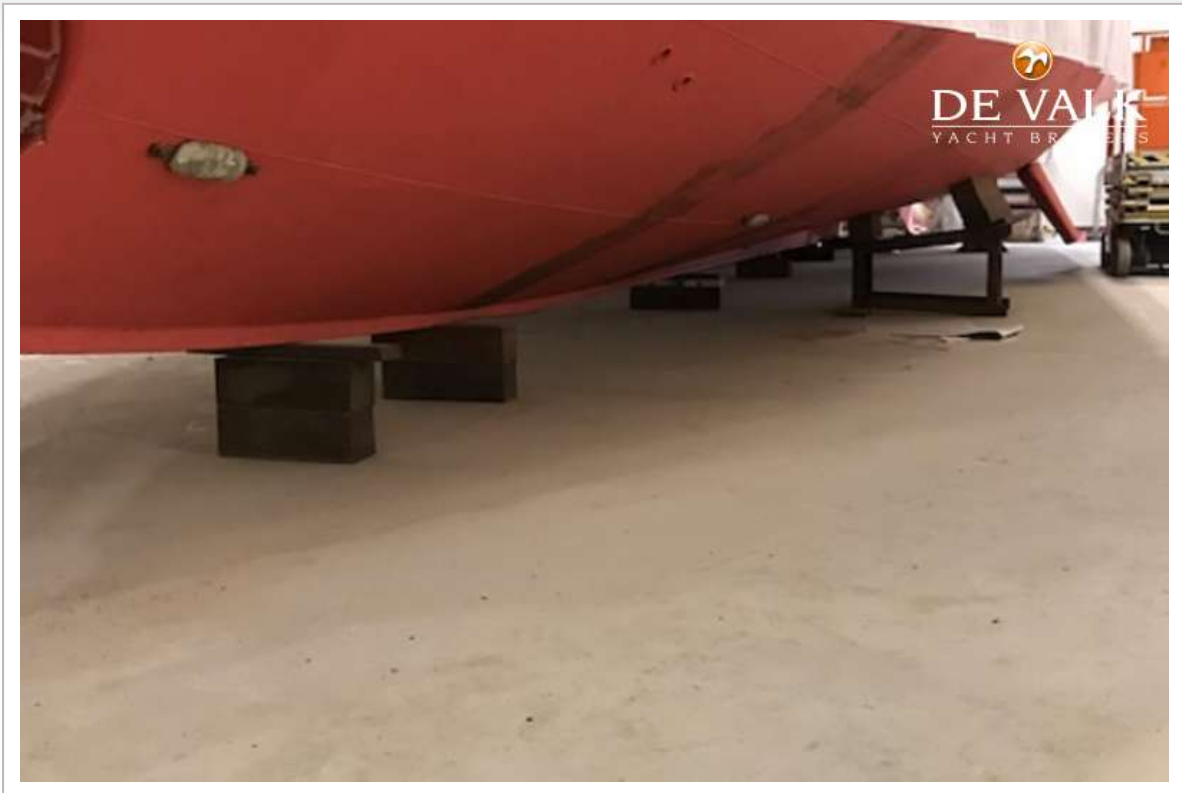
STURIER 675 OC



STURIER 675 OC



STURIER 675 OC



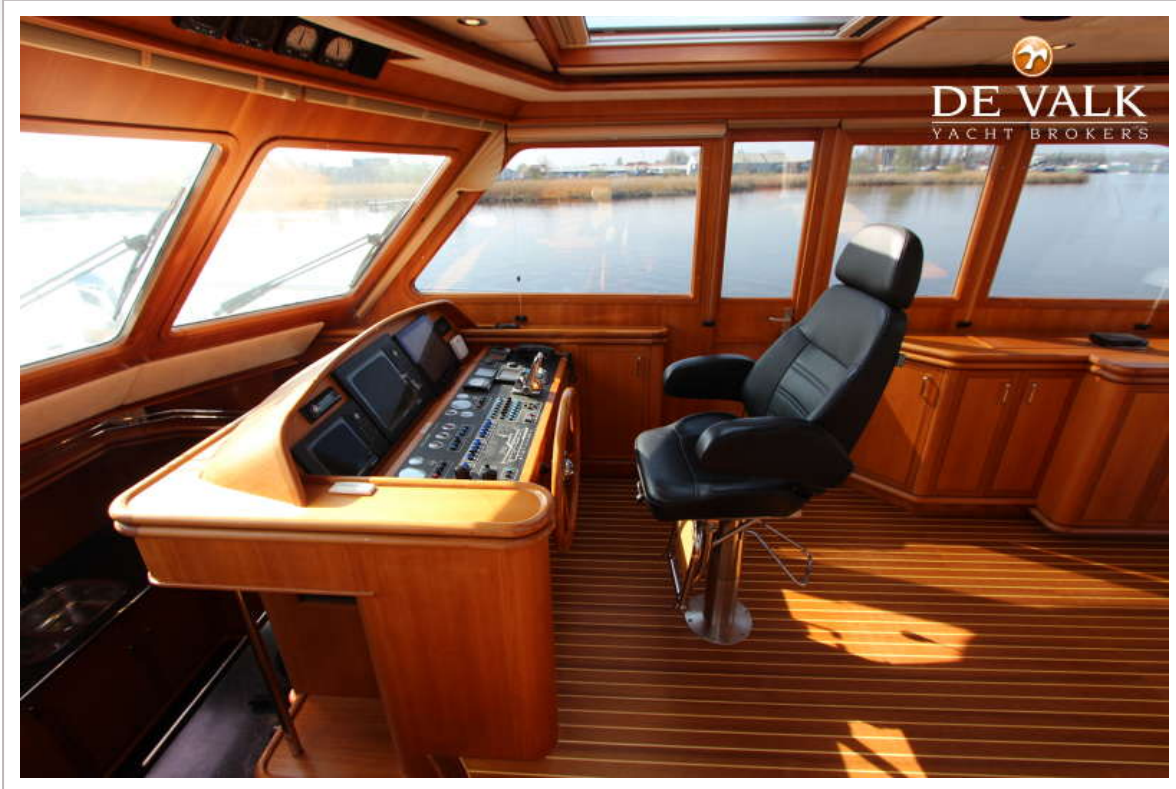
STURIER 675 OC



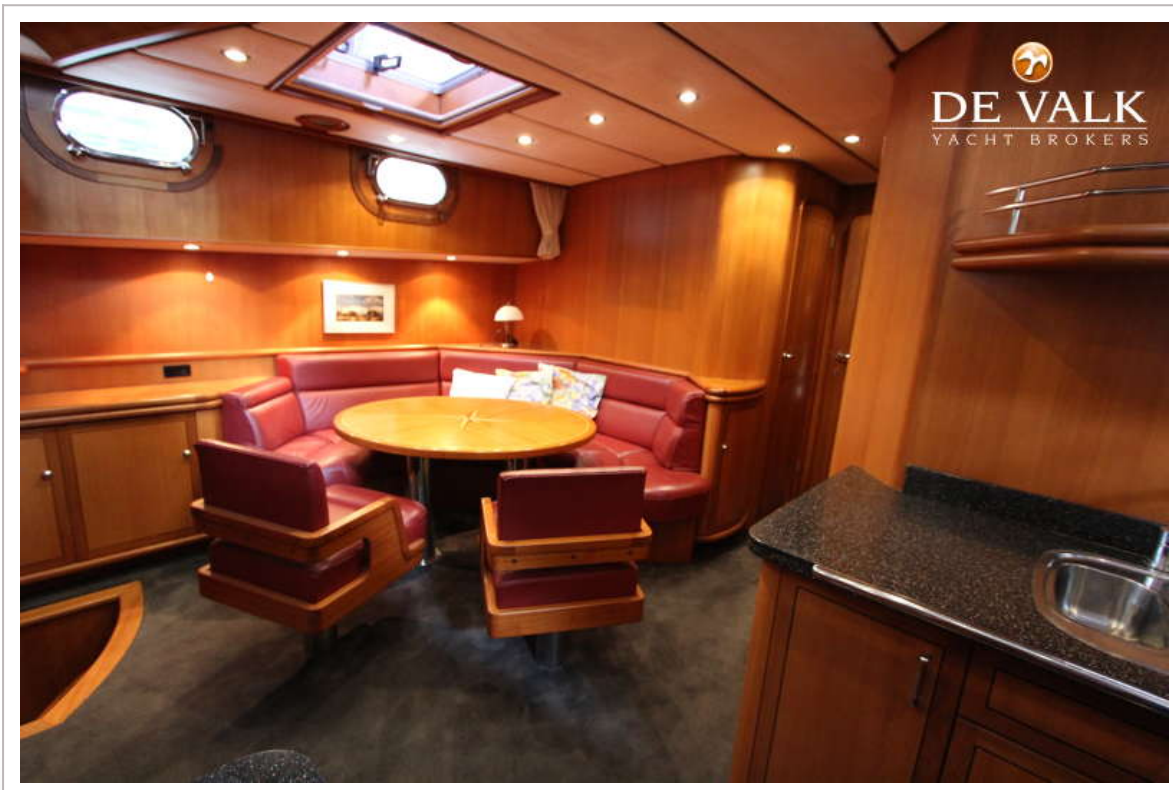
STURIER 675 OC



STURIER 675 OC



STURIER 675 OC



STURIER 675 OC



STURIER 675 OC



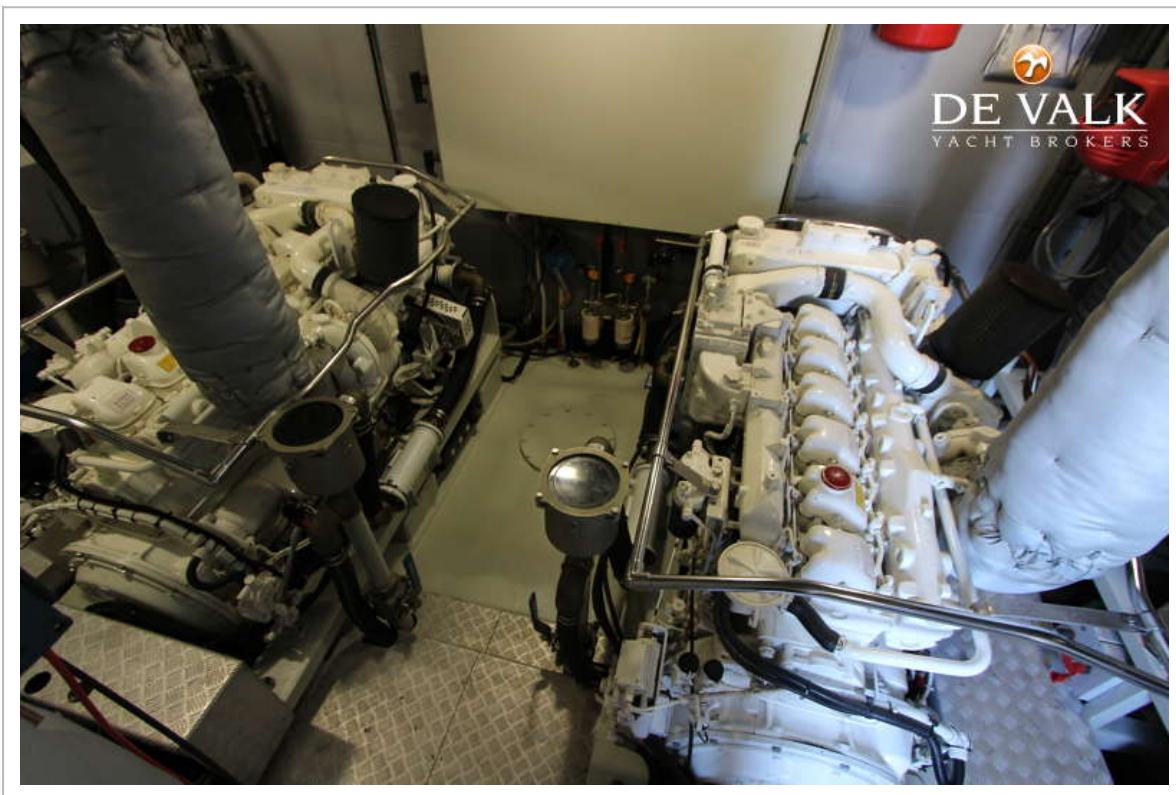
STURIER 675 OC



STURIER 675 OC



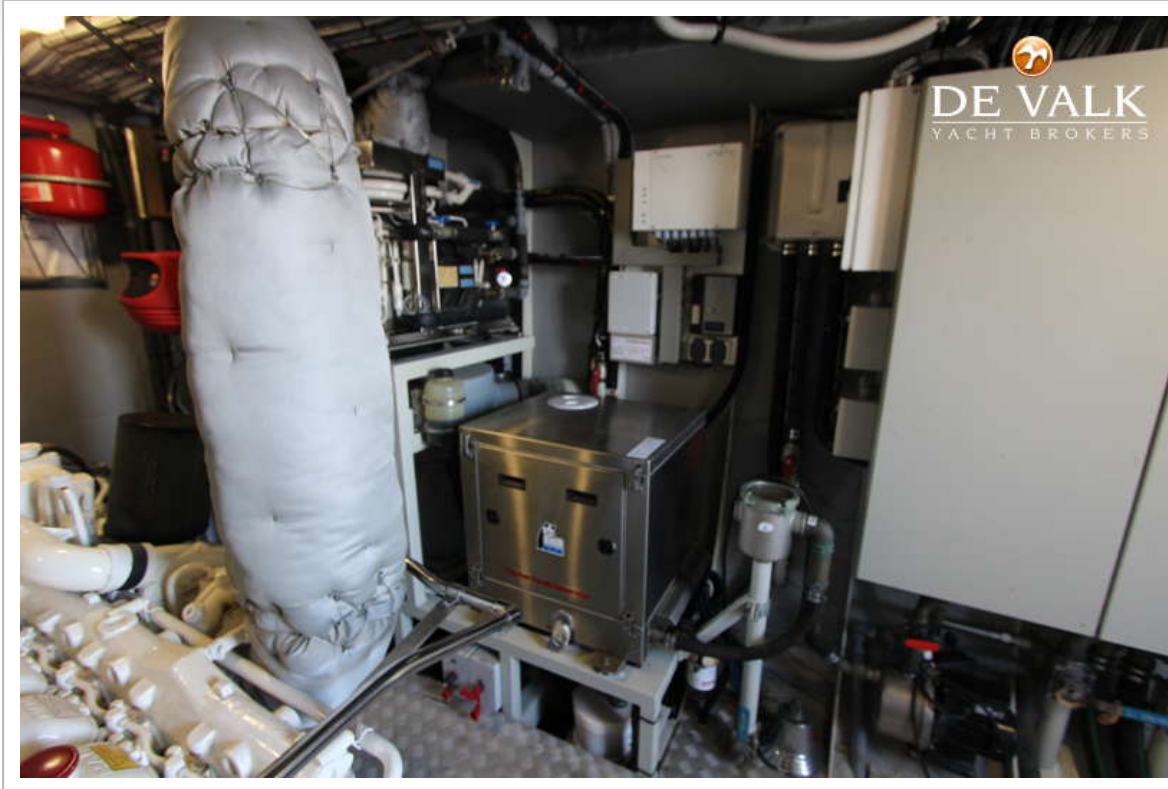
STURIER 675 OC



STURIER 675 OC



STURIER 675 OC



STURIER 675 OC

