



DE VALK  
YACHT BROKERS



## SUNSEEKER MANHATTAN 64



DE VALK  
YACHT BROKERS

# SUNSEEKER MANHATTAN 64

## BROKER'S COMMENTS

The Sunseeker Manhattan 64 is a well built CE-A category motoryacht which offers all the space of a Flybridge with a brand new interior. There is accomodation for six (+2) persons in 3(+1) cabins. Enjoy the luxury of this Sunseeker with her full-width master bedroom, huge saloon and three seperate bathrooms. Other practical details are the convenient acces to the flybridge and to the saloon.

*Arjen Hoeksma*

## SPECIFICATIONS

<b>Dimensions</b>	21.81 x 5.20 x 1.44 (m)	<b>Builder</b>	Sunseeker
<b>Built</b>	2002	<b>Cabins</b>	3
<b>Material</b>	GRP	<b>Berths</b>	6
<b>Engine(s)</b>	2 x MAN D2848 LE-403 V8 diesel	<b>Hp/Kw</b>	2 x 800.00 (hp), 588.00 (kw)
<b>Asking price</b>	sold (VAT )	<b>Lying</b>	at sales office

## CONTACT

<b>Sales office</b>	De Valk Loosdrecht	<b>Telephone</b>	+31 35 582 90 30
<b>Address</b>	't Breukeleveense Meentje 6 1231 LM Loosdrecht / Wijdmeren The Netherlands	<b>E-mail</b>	loosdrecht@devalk.nl

## DISCLAIMER

These particulars are given in good faith as supplied but cannot be guaranteed.



## GENERAL

<b>Model</b>	SUNSEEKER MANHATTAN 64
<b>Type</b>	motor yacht
<b>LOA (m)</b>	21,81
<b>Beam (m)</b>	5,20
<b>Draft (m)</b>	1,44
<b>Headroom (m)</b>	2,00
<b>Year built</b>	2002
<b>Builder</b>	Sunseeker
<b>Country</b>	Great Britain
<b>Displacement (t)</b>	29
<b>CE norm</b>	A
<b>Hull material</b>	GRP
<b>Hull colour</b>	white
<b>Hull shape</b>	deep-V
<b>Superstructure material</b>	GRP
<b>Rubbing strake</b>	stainless steel
<b>Deck material</b>	GRP
<b>Deck finish</b>	teak
<b>Superstructure deck finish</b>	teak
<b>Window frame</b>	stainless steel
<b>Window material</b>	tempered glass
<b>Portholes</b>	stainless steel
<b>Insulation</b>	foam plates
<b>Flybridge</b>	With seating area, sundeck, grill and ice maker
<b>Flybridge suncover</b>	yes
<b>Radar arch</b>	non collapsible
<b>Fuel tank (litre)</b>	aluminum 2300
<b>Level indicator (fuel tank)</b>	yes
<b>Freshwater tank (litre)</b>	aluminum 935
<b>Level indicator (freshwater)</b>	yes



# SUNSEEKER MANHATTAN 64

<b>Blackwater tank (litre)</b>	aluminum
<b>Blackwater tank extraction</b>	pump
<b>Wheel steering</b>	hydraulic
<b>Inside helm position</b>	yes
<b>Flybridge helm position</b>	hydraulic

## ACCOMMODATION

<b>Cabins</b>	3
<b>Berths</b>	6
<b>Crew cabin</b>	1
<b>Crew berths</b>	2
<b>Interior</b>	cherry
<b>Floor</b>	carpet
<b>Aft deck</b>	yes
<b>Pilot house</b>	With Besenzoni leather steering seat
<b>Saloon</b>	With sliding door at starboard side
<b>Headroom saloon (m)</b>	1,95
<b>Heating</b>	Marine Air Systems
<b>Aft Cabin</b>	yes
<b>Dinette</b>	Leather upholstered
<b>Sliding door to cockpit</b>	yes
<b>Galley</b>	yes
<b>Countertop</b>	granite
<b>Sink</b>	stainless steel 2x
<b>Cooker</b>	ceramic Bosch
<b>Microwave</b>	Panasonic
<b>Fridge</b>	with freezer compartment 1x Westpoint, 1x Engel 102L
<b>Water pressure system</b>	electrical With hydrofoor
<b>Dishwasher</b>	Bosch
<b>Owners cabin</b>	french bed
<b>Bed length (m)</b>	2



# SUNSEEKER MANHATTAN 64

<b>Wardrobe</b>	hanging/drawers/shelves
<b>Bathroom</b>	en suite
<b>Toilet</b>	en suite Vacuflush
<b>Toilet system</b>	vacuum
<b>Wash basin</b>	in the bathroom
<b>Shower</b>	shared
<b>Guest cabin 1</b>	french bed
<b>Bed length (m)</b>	2
<b>Wardrobe</b>	hanging/drawers/shelves
<b>Bathroom</b>	en suite
<b>Toilet</b>	en suite Vacuflush
<b>Toilet system</b>	vacuum
<b>Wash basin</b>	in the bathroom
<b>Shower</b>	shared
<b>Guest cabin 2</b>	twin single
<b>Bed length (m)</b>	1,95
<b>Wardrobe</b>	hanging
<b>Bathroom</b>	en suite
<b>Toilet</b>	en suite Vacuflush
<b>Toilet system</b>	vacuum
<b>Wash basin</b>	in the bathroom
<b>Shower</b>	shared
<b>Crew cabin(s)</b>	1 cabin, 2 berths With shower and toilet facilities
<b>Extra info</b>	U-Line ice maker at aft deck

## MACHINERY

<b>No of engines</b>	2
<b>Make</b>	MAN
<b>Type</b>	D2848 LE-403 V8
<b>HP</b>	800,00
<b>kW</b>	588,00



# SUNSEEKER MANHATTAN 64

<b>Fuel</b>	diesel
<b>Maximum speed (kn)</b>	24
<b>Engine hours</b>	SB: 897 / BB: 905
<b>Engine cooling system</b>	freshwater heat exchanger
<b>Drive</b>	V-drive
<b>Engine controls</b>	electrical ZF
<b>Gearbox</b>	hydraulic ZF
<b>Bowthruster</b>	electric QL
<b>Exhaust</b>	watercooled
<b>Propeller type</b>	fixed
<b>Propeller shaft material</b>	stainless steel
<b>Manual bilge pump</b>	yes
<b>Electric bilge pump</b>	yes
<b>Electrical installation</b>	12V/24V/220V
<b>Generator</b>	Kohler Power System
<b>Batteries</b>	yes
<b>Start battery</b>	4 x 12V 120Ah
<b>Service battery</b>	6 x 12V 120Ah
<b>Generator battery</b>	2 x 12V 120Ah
<b>Battery charger</b>	Shark 12V 26A
<b>Shorepower</b>	with cable
<b>Trimtabs</b>	yes
<b>Extra info</b>	Bauer compressor

## NAVIGATION

<b>Compass</b>	Ritchie
<b>Compass on flybridge</b>	yes
<b>Depth sounder</b>	Raytheon ST60
<b>Log</b>	Raytheon ST60
<b>Repeater</b>	Radar, LOG and echosounder on flybridge
<b>VHF</b>	Simrad shipmate RS8400



# SUNSEEKER MANHATTAN 64

Autopilot	Raymarine ST6002 + ST600R control
Rudder angle indicator	yes
Radar/GPS/plotter	Raymarine pathfinder R170C
Searchlight	2x

## EQUIPMENT

Fixed windscreen	yes
Cockpit cover	yes
Bimini	yes
Cockpit cushions	Suede
Bathing platform	yes
Boarding ladder	stainless steel
Gangway	Besenzoni hydraulic
Deck shower	Hot/cold
Anchor	Delta
Anchor chain	yes
Windlass	electrical Muir
Capstan	Simpson Lawrence
Deck wash	Stern and bow
Sea railing	stainless steel
Grab rail (superstructure)	stainless steel
Life raft	container Transmarina
Life raft (pers)	10
Last life raft survey	24 januari 2010 (need to be checked)
Wiper	3x
Horn	air pressure
Radar reflector	yes
Fenders	yes
Mooring lines	yes
TV	1 x Sharp on lift, 2 x Sharp in guest rooms
TV receiver	Glomex



# SUNSEEKER MANHATTAN 64

<b>Radio-cd player</b>	Alpine
<b>DVD player</b>	Panasonic in saloon, 2x Alpine in guest rooms
<b>Cockpit speakers</b>	yes
<b>Speakers in salon</b>	Panasonic
<b>Speakers in cabin</b>	yes
<b>Fire extinguisher</b>	yes
<b>Extinguisher in engine room</b>	Automatic seafire fm-200
<b>Extra info</b>	Sundeck on bow and flybridge, Simag icemaker on flybridge





# SUNSEEKER MANHATTAN 64



# SUNSEEKER MANHATTAN 64

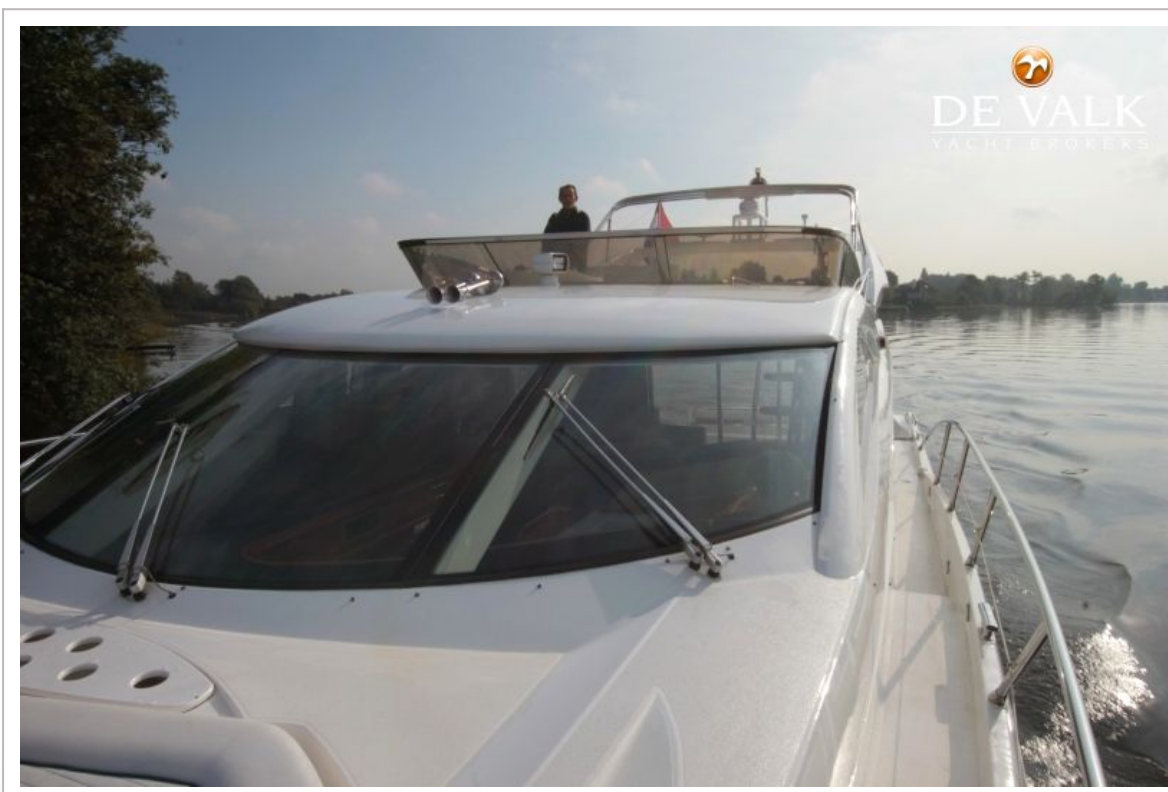


# SUNSEEKER MANHATTAN 64





# SUNSEEKER MANHATTAN 64



# SUNSEEKER MANHATTAN 64



# SUNSEEKER MANHATTAN 64





# SUNSEEKER MANHATTAN 64



# SUNSEEKER MANHATTAN 64

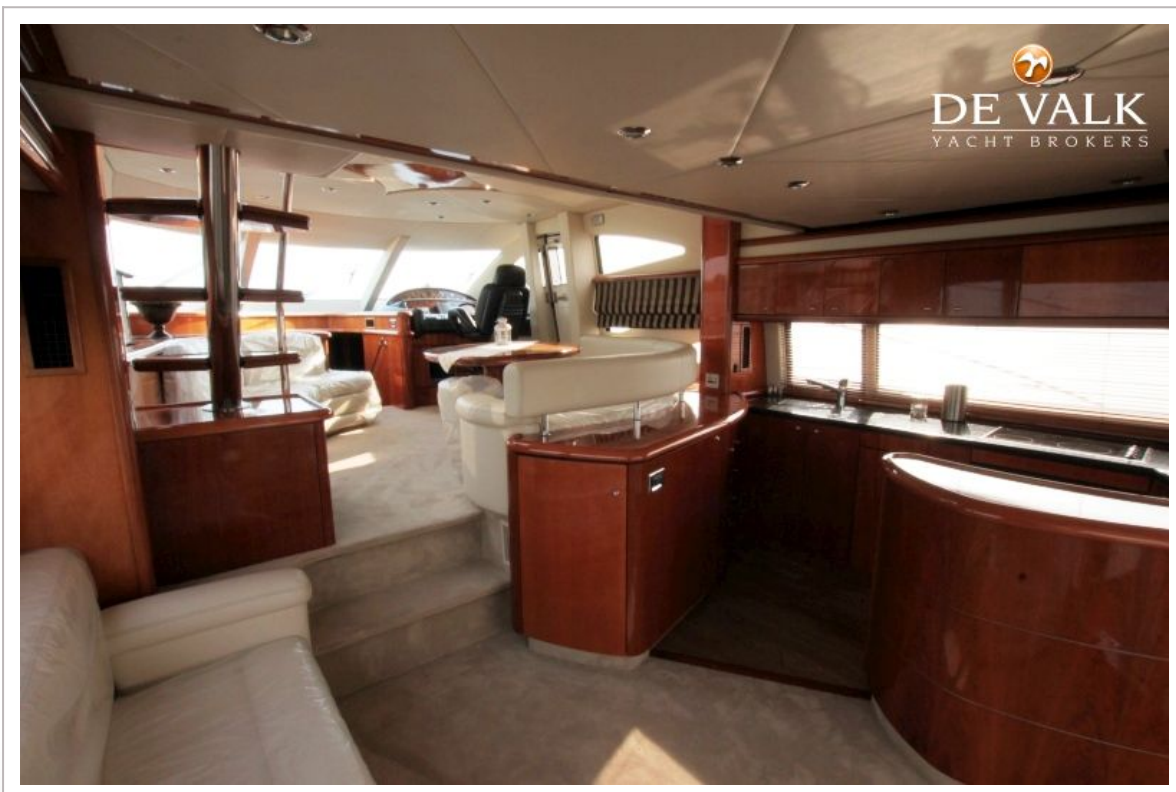




# SUNSEEKER MANHATTAN 64



# SUNSEEKER MANHATTAN 64





# SUNSEEKER MANHATTAN 64



# SUNSEEKER MANHATTAN 64

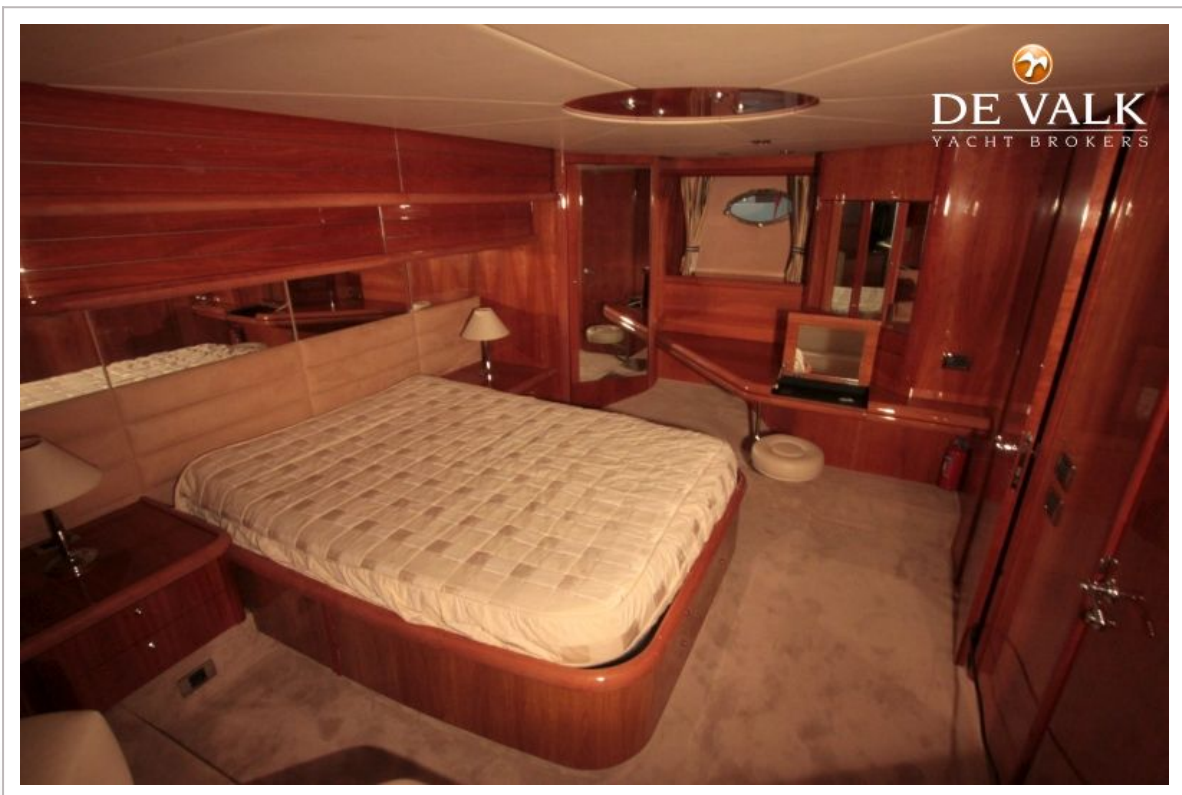
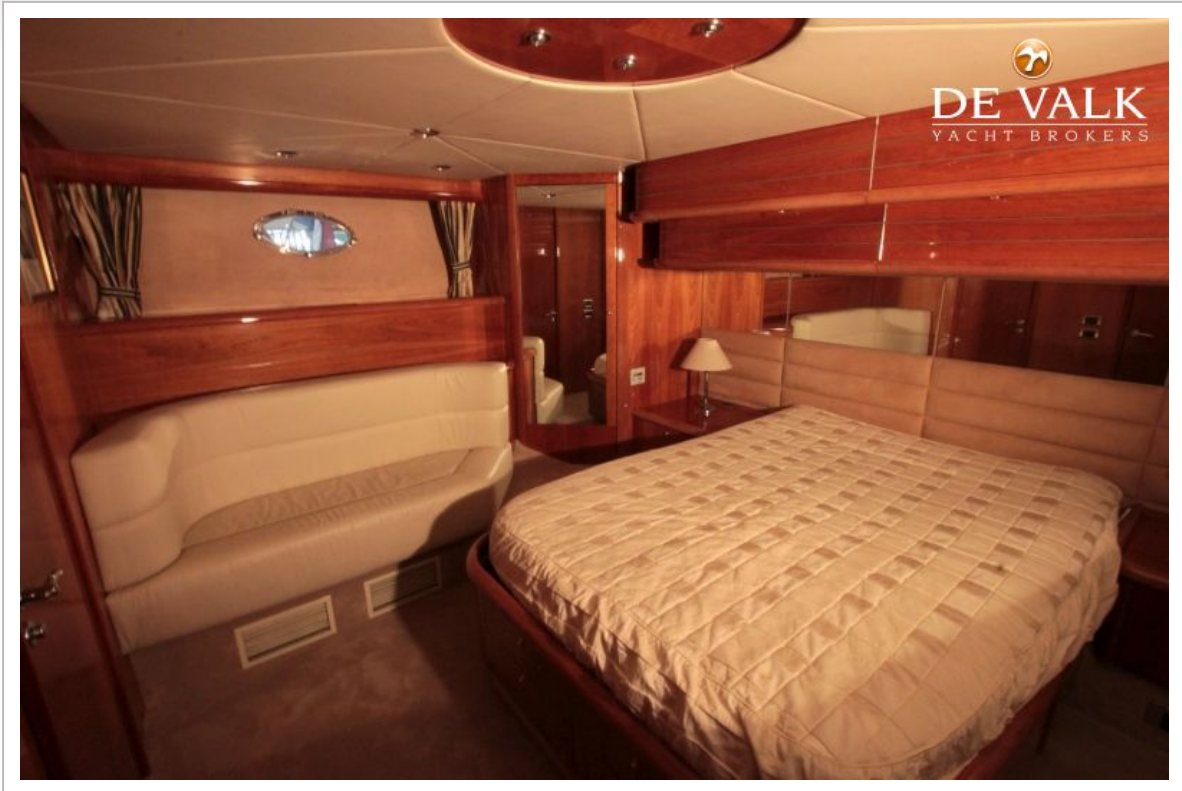




# SUNSEEKER MANHATTAN 64

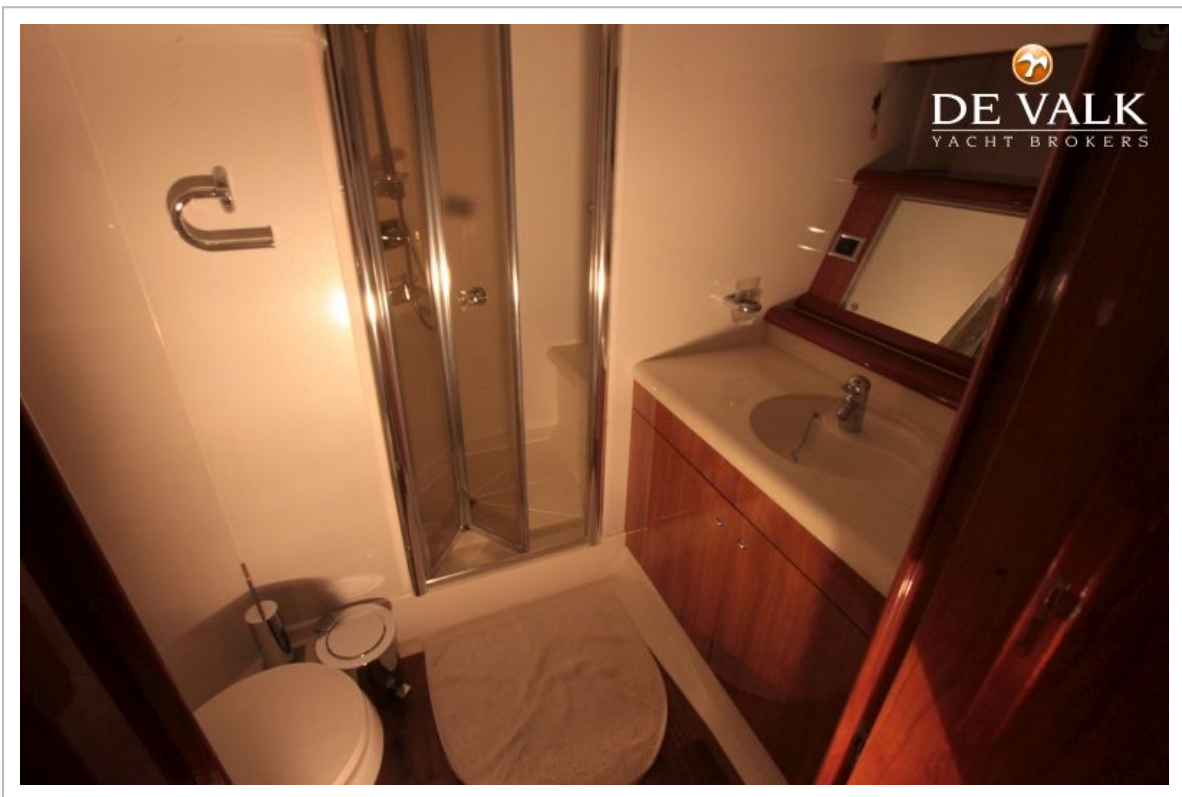


# SUNSEEKER MANHATTAN 64

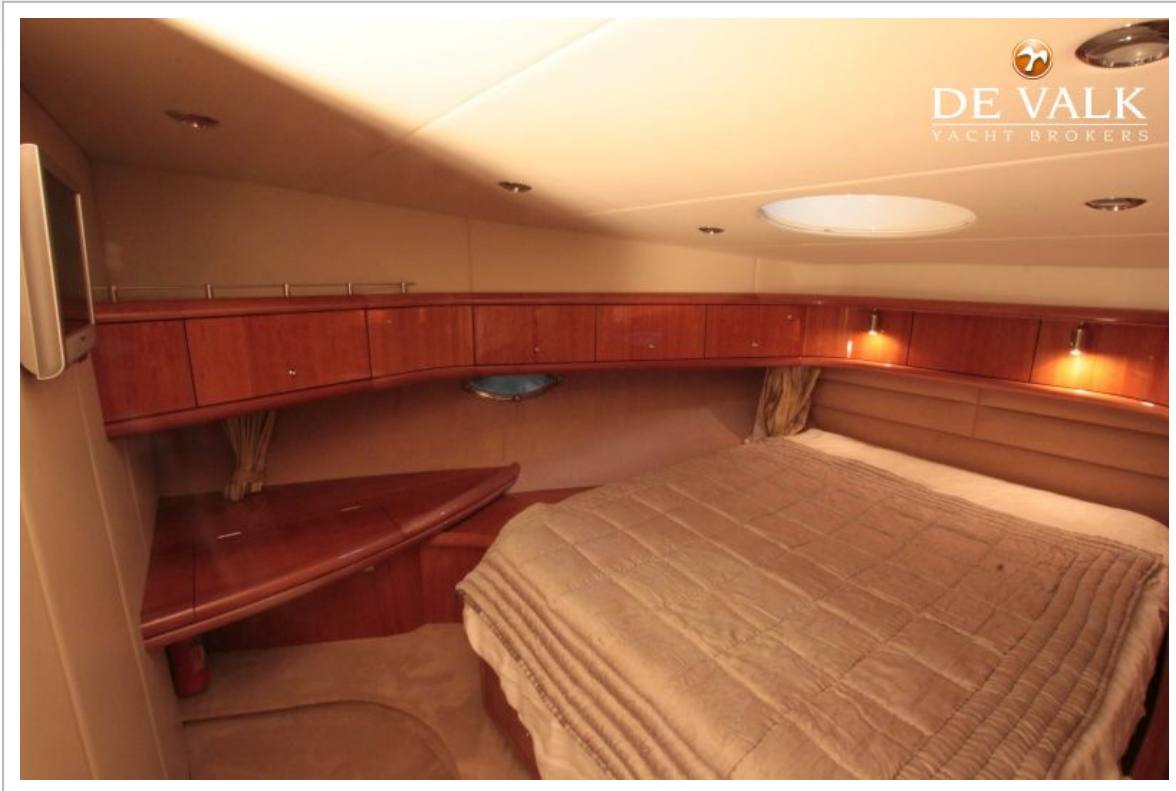




# SUNSEEKER MANHATTAN 64

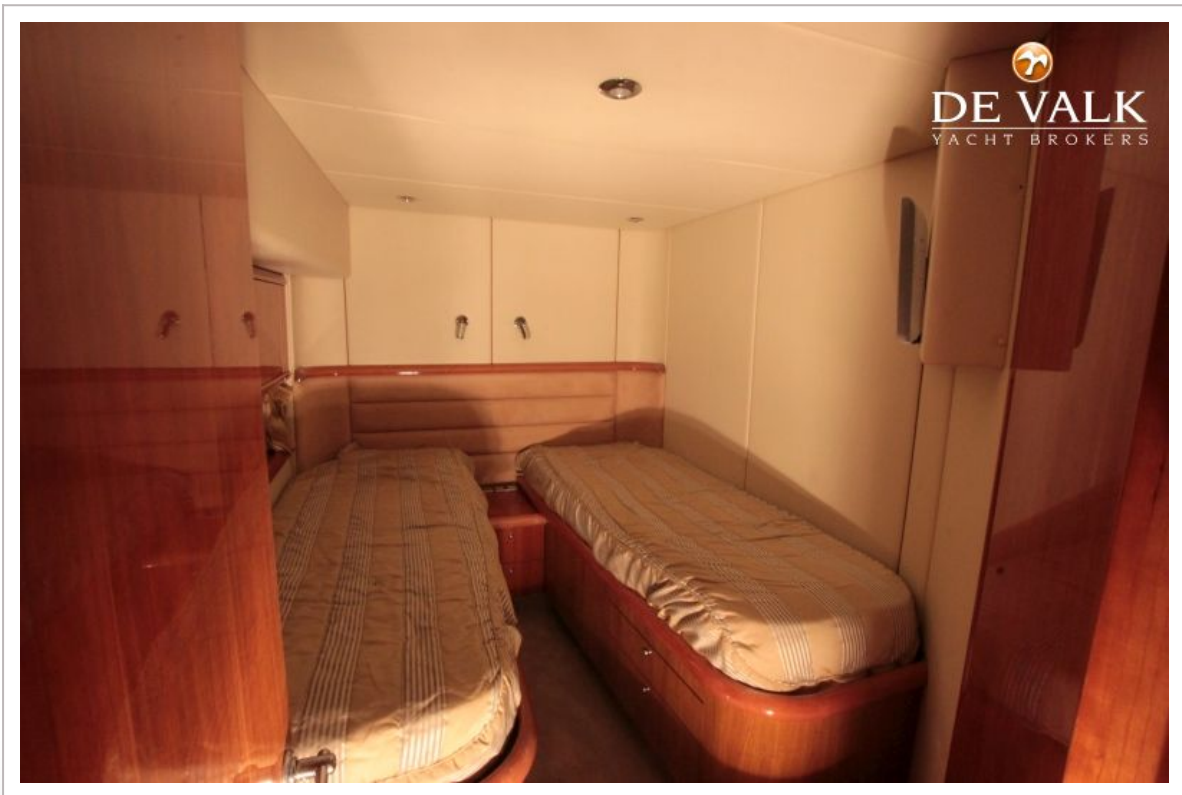
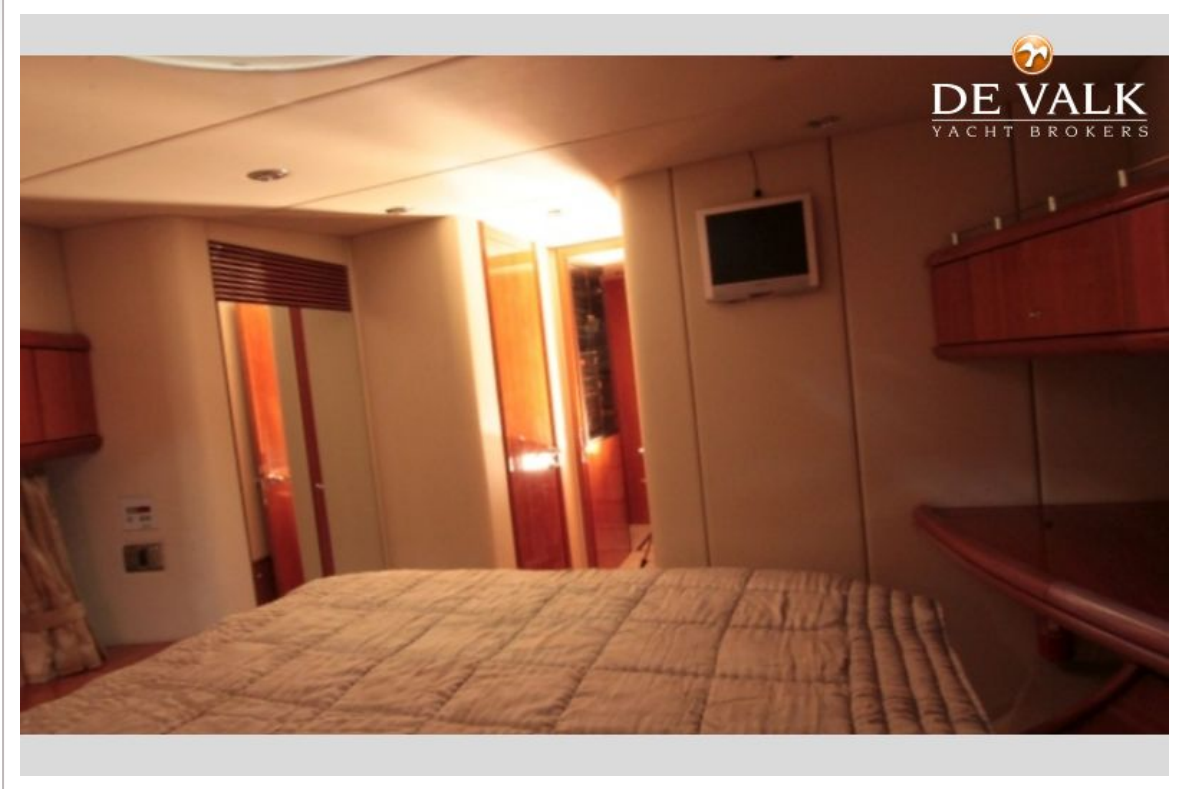


# SUNSEEKER MANHATTAN 64

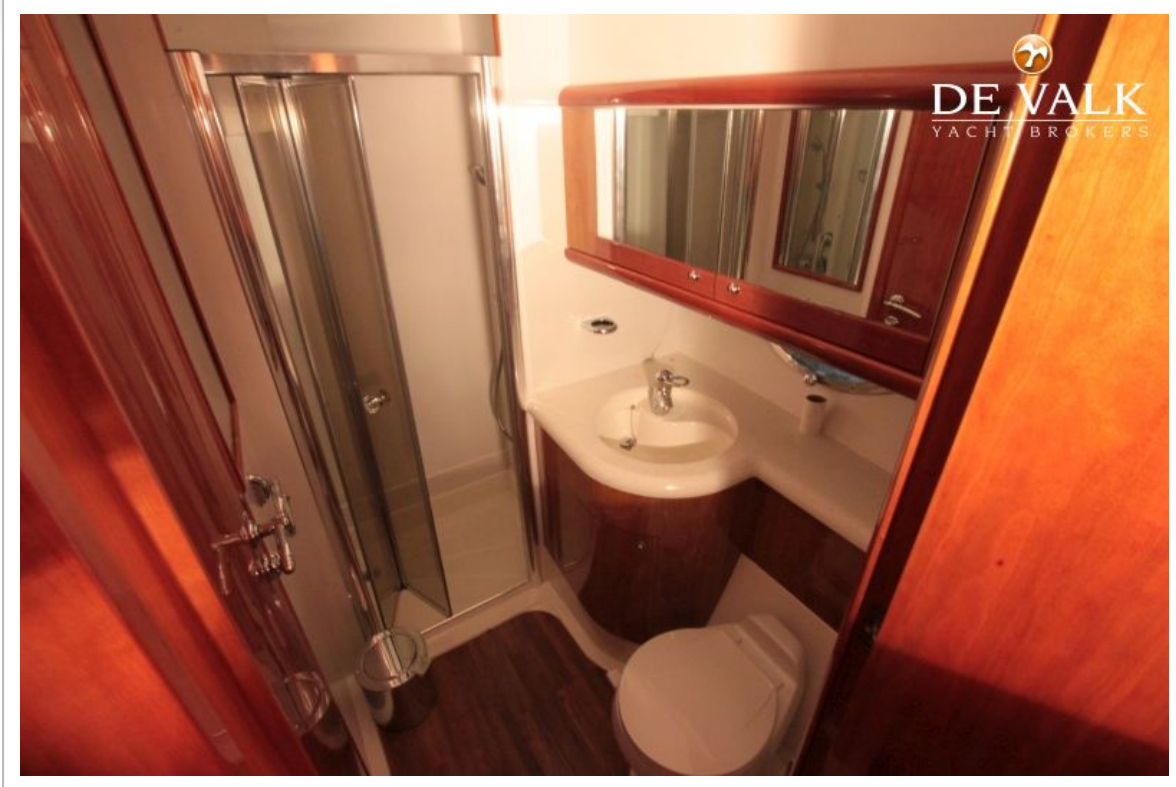




# SUNSEEKER MANHATTAN 64



# SUNSEEKER MANHATTAN 64



# SUNSEEKER MANHATTAN 64

