



DE VALK
YACHT BROKERS



EXPLORER EXPEDITION VESSEL 85



DE VALK
YACHT BROKERS

EXPLORER EXPEDITION VESSEL 85

BROKER'S COMMENTS

The Sirius 85 explorer class combines traditional Dutch trawler design & engineering, double welded construction by certified welders and fitting of professional marine components & appliances. The Sirius 85 Explorer guarantees a sturdy seaworthy vessel capable to cruise all oceans in comfort and safety at an affordable purchase price and easy sailing with owner and wife. Lloyd's Register EMEA classifies the steel hull and aluminium superstructure and the optimised hull shape ensures an economical cruising speed of 9 knots with a range of 5,000 n.m.

Hans Visser

SPECIFICATIONS

Dimensions	25.80 x 6.60 x 1.60 (m)	Builder	Sinnautic BV
Built	2011	Cabins	3
Material	Steel	Berths	6
Engine(s)	1 x Iveco Aifo 8210 SRM 36 diesel	Hp/Kw	360.00 (hp), 264.60 (kw)
Asking price	€ 1.100.000 (VAT Not paid)	Lying	at sales office

CONTACT

Sales office	De Valk Hindeloopen	Telephone	+31 514 52 40 00
Address	Oosterstrand 1 8713 JS Hindeloopen The Netherlands	E-mail	hindeloopen@devalk.nl

DISCLAIMER

These particulars are given in good faith as supplied but cannot be guaranteed.



EXPLORER EXPEDITION VESSEL 85

GENERAL

Model	EXPLORER EXPEDITION VESSEL 85
Type	motor yacht
LOA (m)	25,80
LWL (m)	23,60
Beam (m)	6,60
Draft (m)	1,60
Air draft (m)	12,75
Air draft min (m)	6,30
Headroom (m)	2,20
Year built	2011
Launched	2011
Builder	Sinnautic BV
Country	The Netherlands
Designer	Gaastmeer design b.v.
Displacement (t)	90
Ballast (tonnes)	Ballast/trim tank 2.700 l in fore peak compartment
Net tonnage	60 tons
CE norm	NA
Hull material	steel
Hull colour	grey Repainted 2023
Hull thickness (mm)	7mm & 8mm & 10mm
Hull shape	multi hard chine
Keel type	box keel
Bilge keels	Static stabilizers for comfort and beaching
Superstructure material	aluminium
Superstructure (mm)	4, 5 & 6
Deck plate thickness (mm)	5 & 6
Rubbing strake	stainless steel
Deck material	steel
Deck finish	non-skid paint Grey repainted 2021



EXPLORER EXPEDITION VESSEL 85

Superstructure deck finish	non-skid paint Grey
Cockpit deck finish	non-skid paint Grey repainted 2021
Antifouling (year)	2023
Window frame	aluminium
Window material	double glazing Tainted 6 + 10 mm
Deckhatch	Freeman
Portholes	brass Stainless 12 mm & steel stormblinds
Insulation	rockwool Hull & main deck BASF Elastopor foam, Superstructure Rockwool
Mast can be lowered	hydraulic Main hydraulic, aft manual
Fuel tank (litre)	steel 13800 l. in 6 tanks
Fuel tank 2 (litre)	4.400 additional tank possible
Level indicator (fuel tank)	yes
Fuel daytank (litre)	steel 2060 liter included in the total
Level indicator (daytank)	yes
Freshwater tank (litre)	steel 4.400 l.
Level indicator (freshwater)	yes
Blackwater tank (litre)	steel 1.600 l.
Level indicator (blackwater)	Alarm only
Blackwater tank extraction	pump
Greywater tank (litre)	steel Is the same as black water tank
Level indicator (greywater)	Alarm only
Wheel steering	hydraulic Trydo twin cylinder with fishtail design rudder
Inside helm position	yes
More info on hull	6 watertight compartments & 4 watertight central closing doors
Extra info	2 x outside bridge wing for easy manouvering & lookout
Extra info	Draft 1,55 @ 1/3 fuel and 100% water, fully loaded 1,60
Extra info	Built according Lloyds register including HC certificate & engin

ACCOMMODATION

Cabins	3
---------------	---



EXPLORER EXPEDITION VESSEL 85

Berths	6
Crew cabin	Optional 2
Crew berths	Optional 4
Interior	cherry Ceilings Birch wood
Layout	Explorer with 120 m2 living space
Floor	parquet Ash
Aft deck	yes
Pilot house	yes
Deck saloon	On the aft deck
Headroom saloon (m)	2,20
Sliding roof	electric In pilothouse webasto
Heating	Kabola B25 Tap 29 kW.
Air-conditioning	reverse cycle airco Mave 27300 BTU in all living spaces
Navigation center	In the pilot house
Chart table	In the pilot house
Dining room	In the salon
Sliding door to cockpit	Freeman (dutch door) from saloon to aft deck
Opening door to cockpit	Freeman dutch doors to side wings on each side of pilothouse
Opening door to aft deck	Freeman dutch door entrance to starboard side deck & salon aft
Galley	U shaped
Countertop	wood
Sink	stainless steel Double
Cooker	4 burner gas stove
Oven	yes
Gas alarm	BEP gas detection /alarm system
Microwave	Stainless
Fridge	In galley 78 liter incl 7,5 l. freezer compartment
Freezer	Fridge & freezer in technical room (40 l. each)
Wine cooler	40 l.
Hot water system	On Central heating & Isotherm 1500 W, 75 L. double coil boiler
Water pressure system	electrical 220VAC 50 l. capacity hydrofoor
Dishwasher	For 8 couverts



EXPLORER EXPEDITION VESSEL 85

Ice maker	In pantry
Crockery	For 8
Owners cabin	double bed Owners cabin
Bed length (m)	2.10 x 1.60
Wardrobe	hanging/drawers/shelves
Bathroom	en suite
Toilet	en suite & bidet
Toilet system	electric
Wash basin	in the bathroom Double
Shower	en suite
Extra info	A/C + heating in the cabin & forced ventilation in bathroom
Guest cabin 1	double bed Vip Cabin
Bed length (m)	2.00 x 1.40
Wardrobe	hanging/drawers/shelves
Bathroom	shared
Toilet	shared
Toilet system	electric
Wash basin	in the bathroom
Shower	shared
Extra info	A/C & heating in cabin & forced ventilation in the bathroom
Guest cabin 2	bunk bed Guest cabin 1
Bed length (m)	2 x 2.00 x 0,90
Wardrobe	hanging and drawers
Bathroom	shared
Toilet	shared
Toilet system	electric
Wash basin	in the bathroom
Shower	shared
Extra info	A/C & heating
Guest cabin 3	Currently used as storage cabin
Crew cabin(s)	Currently in use as storage
Extra info	Large ships hold 3 x 5,5 x 2,2 just aft of the crew cabin



EXPLORER EXPEDITION VESSEL 85

Washing machine	In the technical room
Washing machine/dryer combi	yes
Ironing facilities	yes
Extra info	Seperate deck acces for ships hold designed for toys/scuba
Extra info	Front storage can be converted into 2 additional cabins

MACHINERY

No of engines	1
Make	Iveco Aifo
Type	8210 SRM 36
HP	360
kW	264.60
Fuel	diesel
Year installed	2009
Maximum speed (kn)	10 knots
Cruising speed (kn)	7,5 knots @ 1500 rpm
Consumption (l/hr)	29
Range (nm)	5000
Engine hours	2600
Engine cooling system	freshwater heat exchanger Dry exhaust and COWL muffler with 2 3" SS AISI 316 strainers
Drive	shaft
Shaft seal	Maxprom GS + emergency seal installed
Engine controls	electrical Straathof / ZF Microcommander
Gearbox	hydraulic Twin Disk model MG 5075 SC with PTO for Hydraulic power
Secondary engine	diesel Iveco FPT NEF N45 100 for hydraulic power/ emergency genset
Engine controls	electrical Straathof & ZF Microcommander electrical & remote control
Homer	Emergency powering sidepower SPH 550



EXPLORER EXPEDITION VESSEL 85

Bowthruster	hydraulic Sidepower SPH 550 on auxillary engine powerpack with remote
Sternthruster	hydraulic Sidepower SPH 550 on auxillary engine powerpack with remote
Exhaust	watercooled
Thrust bearing	Centa AGM 400
Propeller type	fixed Exalto HS aquaprop oversized for economical cruise @ 7,5 knots
Propeller blades	4
Propeller shaft material	stainless steel Exalto C45/ 90 mm. stainles steel 120 mm long
Shaft lubrication	water
Electric bilge pump	2 x 400 VAC Varisco J2-180TWG s2 speed/ waist/bilge/fire pumps
Bilge alarm	yes
Electrical installation	12 & 24 V DC 240 & 400 V AC with 140 Ah 24 V alternator on main
Generator	silent separator Northern Lights 16 Kva 3 phase @ 1500 rpm 400 V. 50 hz.
Running hours generator	910
Generator 2	silent separator 8,5 Kva 3 phase @ 3000 rpm 400 V 50 hz on auxillary Iveco engine
Running hours generator 2	337
Batteries	Hawker batteries 1200 Amp 24 Volt (2010) No longer servicable
Start battery	2 x 12 V 200 AH for main 24 V (2019)
Service battery	Backup Whisperpower 1600 Amp 24 V (2016)
Generator battery	24V 140 Ah auxilloery 24V & 12V 70 Ah generator (both 2019)
Battery monitor	Victron bat. mon. BMV602 & WP pro battery monitor
Battery charger	1 x Victron skylia 24 V 100 Ah, 1 x whisperpower power cube 150
Inverter	2 x Victron Phoenix 3000, 1 x Mastervolt powecube 24V 7000
Shorepower	with cable
Insulation transformer	220 V AC (3000W & 400VAC (16 Kva)
Watermaker	Bluewater explorer 140 l/h. (needs new membrane)



EXPLORER EXPEDITION VESSEL 85

Stabilizers	0-speed MATS hydraulic actuated fins on engine PTO and zero speed mode
Extra info	Manifolds and Valves from Econosto global valve type
Extra info	2 x alarm panel (24 functions) in wheel house & technical cabin
Extra info	1 x 400 VAC secondary bilge/waste/ pump Varisco EP J40TWG

NAVIGATION

Electric compass	Simrad RC42
Depth sounder	Simrad IS 15
Log	Simrad IS 15
Windset	Simrad IS 20
Repeater	Simrad IS20 rudder angle indicator
VHF	2 x Simrad RS25
VHF handheld	Simrad HT50
Autopilot	Simrad AP50 + remote GS42, & Simrad IS20 course indicator
Rudder angle indicator	Simrad IS20
Radar	1 x Simrad BR24 broadband & 1 x Simrad 6 kW
GPS	Simrad GS15 & Simrad HS70 DGPS compass
Plotter	2 x VDS 319 glass bridge 1 x 17 " & 1 x 19 "
Radar/GPS/plotter	2 x Simrad NSO50 + OP40
Electronic chart(s)	Navionics Gold
AIS transceiver	EM-TRTAK A 200 Alphanon 2023
EPIRB	NEB 2000C class 2 (2016)
Camera	Orlaco rear view camera port & starboard
Navigation lights	DHR
Searchlight	USHIO XB-150 remote
Extra info	Pro. Hornn Whistle-Tyfun kockum Sonic ETD 100-350 + auto control
Extra info	SART Debeg 5900 (old)

EQUIPMENT



EXPLORER EXPEDITION VESSEL 85

Storm blinds	yes
Sun awning	3 sun shade canopies forecastle, main deck and aft deck.
Cockpit cushions	yes
Cockpit table	yes
Cockpit chairs	yes
Bathing platform	yes
Boarding ladder	aluminum
Transom door	Converts to platform
Gangway	yes
Deck shower	yes
Anchor	160 kg D' Hone
Anchor chain	18 mm 160 m.
Anchor 2	160 kg D' Hone
Anchor chain	18 mm 120 m.
Chain counter	Autoanchor 710 chaincounter with remote control on port chain
Windlass	hydraulic Data Danfoss 2150 kg
Deck wash	yes
Dinghy	Optional Rib and rescue sloop
Outboard	Optional
Deck crane	hydraulic Lagendijk 1250 kg (max extend) elec. hydr. 400VAC with remote
Sea railing	yes
Grab rail (superstructure)	aluminium
Railing side opening gates	yes
Life raft	container Viking resc pro ISO pack II
Life raft (pers)	container 6
Last life raft survey	2021
Lifejackets	3 x Secumar (need service)
Safety harness	IN LIFE JACKET
Lifebuoy	2 X One with light
Rope cutter	yes
Wiper	5 x Exalto type 233BD Panto with autocontrol & wash down



EXPLORER EXPEDITION VESSEL 85

Horn	yes
Fenders	yes
Mooring lines	yes
Spare parts	yes
Tools	yes
Alarm system	yes
TV	Reflexion 32" no antenna
Radio-cd player	yes
DVD player	In TV
Fire extinguisher	3 x 6 kg powder, 1 x 2kg foam, 1 x 5 kg Co2,
Extinguisher in engine room	yes
Auto extinguisher system	Rola FM 200/760 in engine room
Extra info	2 x Fire Hydrant + hose and nozzles on deck
Extra info	1 x 220VAC portable submersable pump, Gundfoss KP250 stainless
Extra info	1 x 220VAC fuel transfer pump SAER PC250EM

RIGGING

Rigging	Steel forward mast + spreader doubles as hydraulic crane
Material mast	aluminium Aft mast
Mast lowering system	Both masts, aft manual
Extra info	Ample space for daysailer on deck



EXPLORER EXPEDITION VESSEL 85

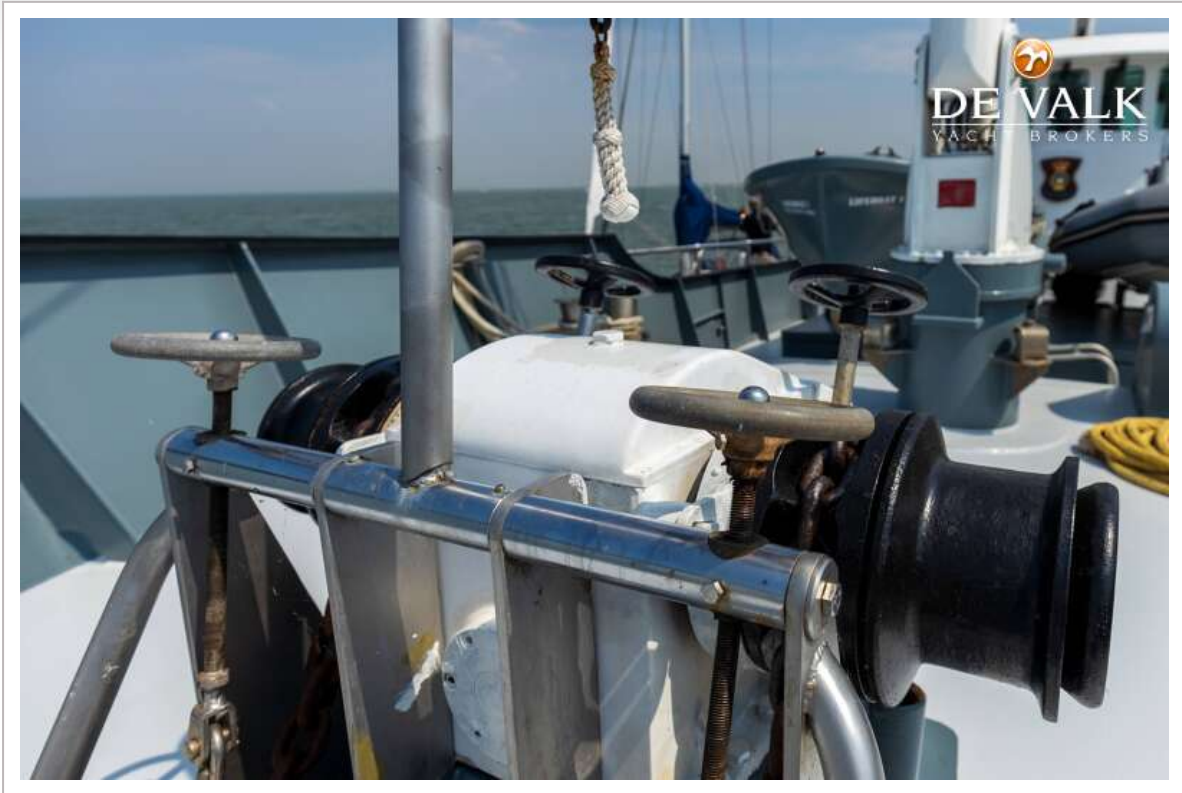


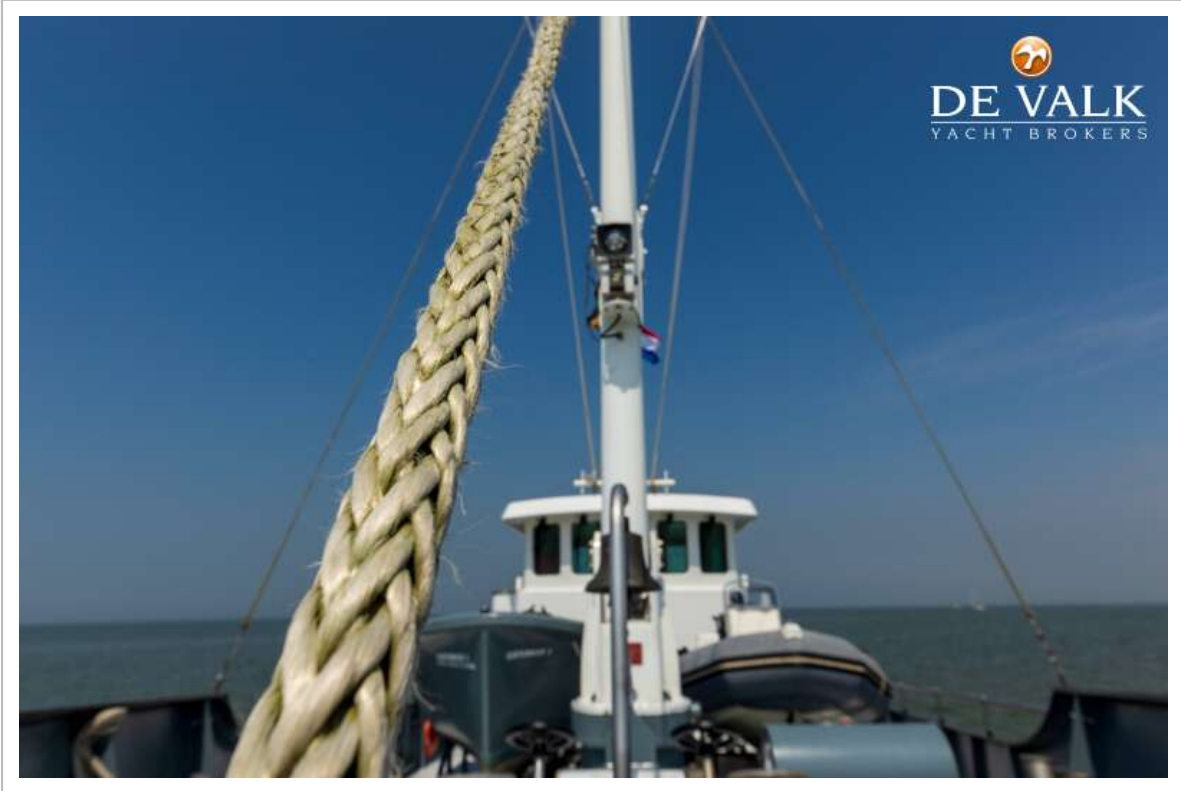
EXPLORER EXPEDITION VESSEL 85



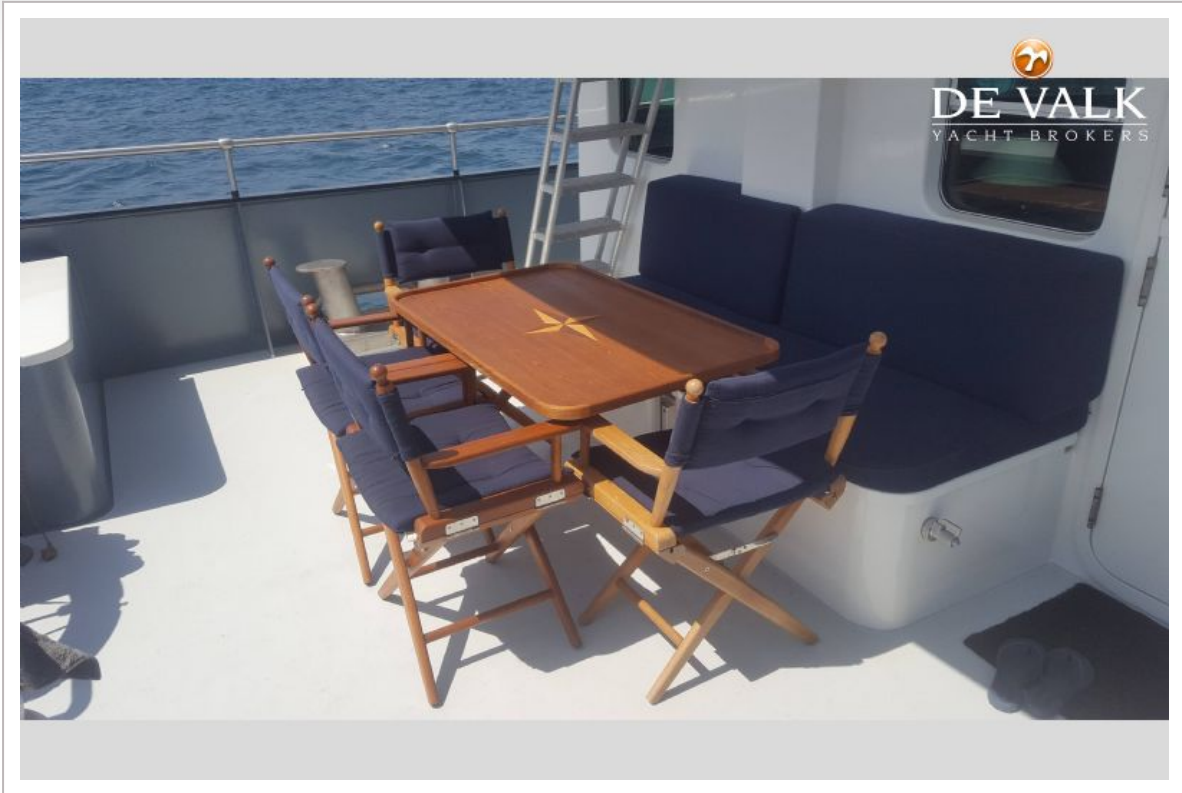
EXPLORER EXPEDITION VESSEL 85



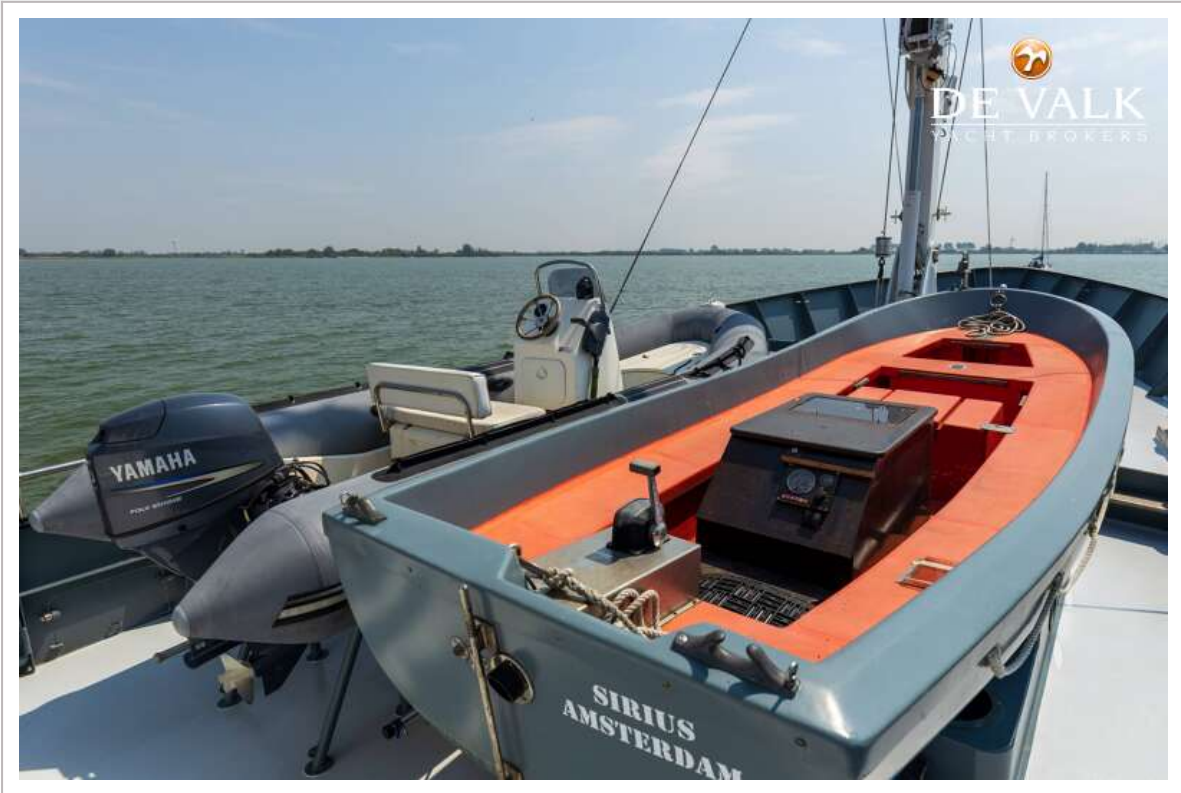




EXPLORER EXPEDITION VESSEL 85

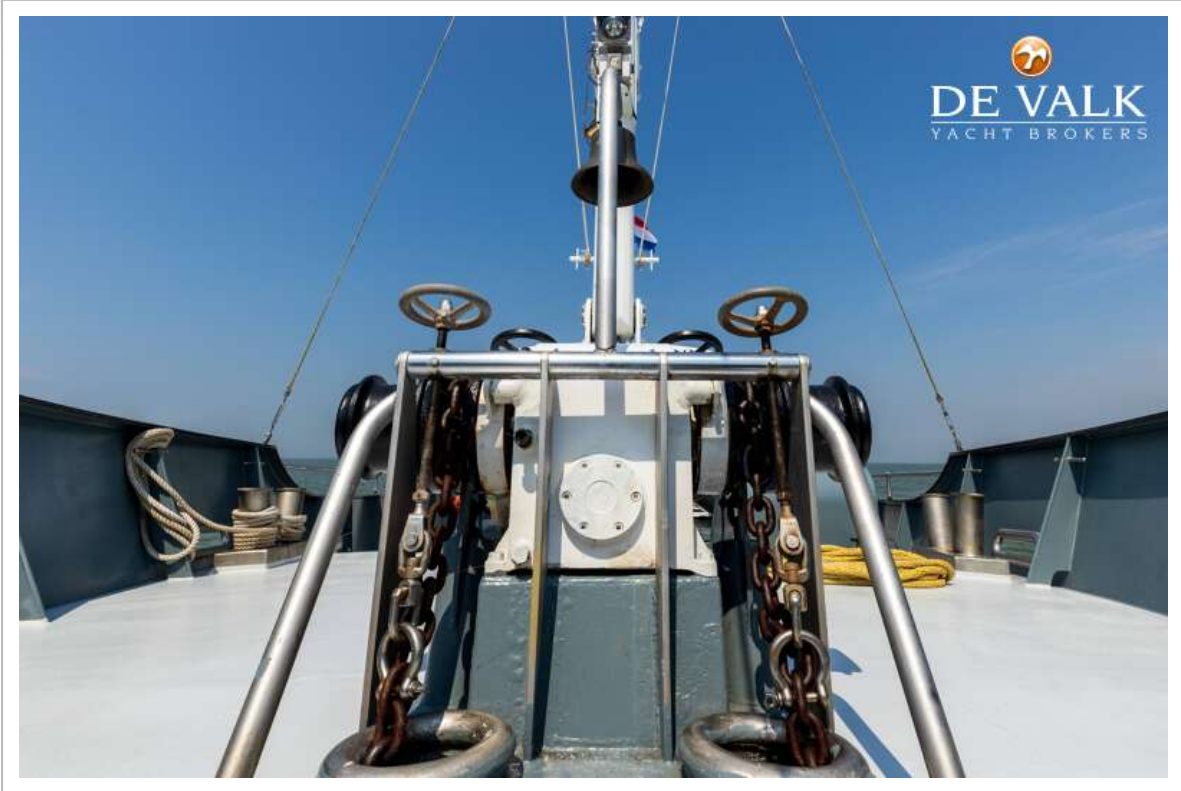


EXPLORER EXPEDITION VESSEL 85

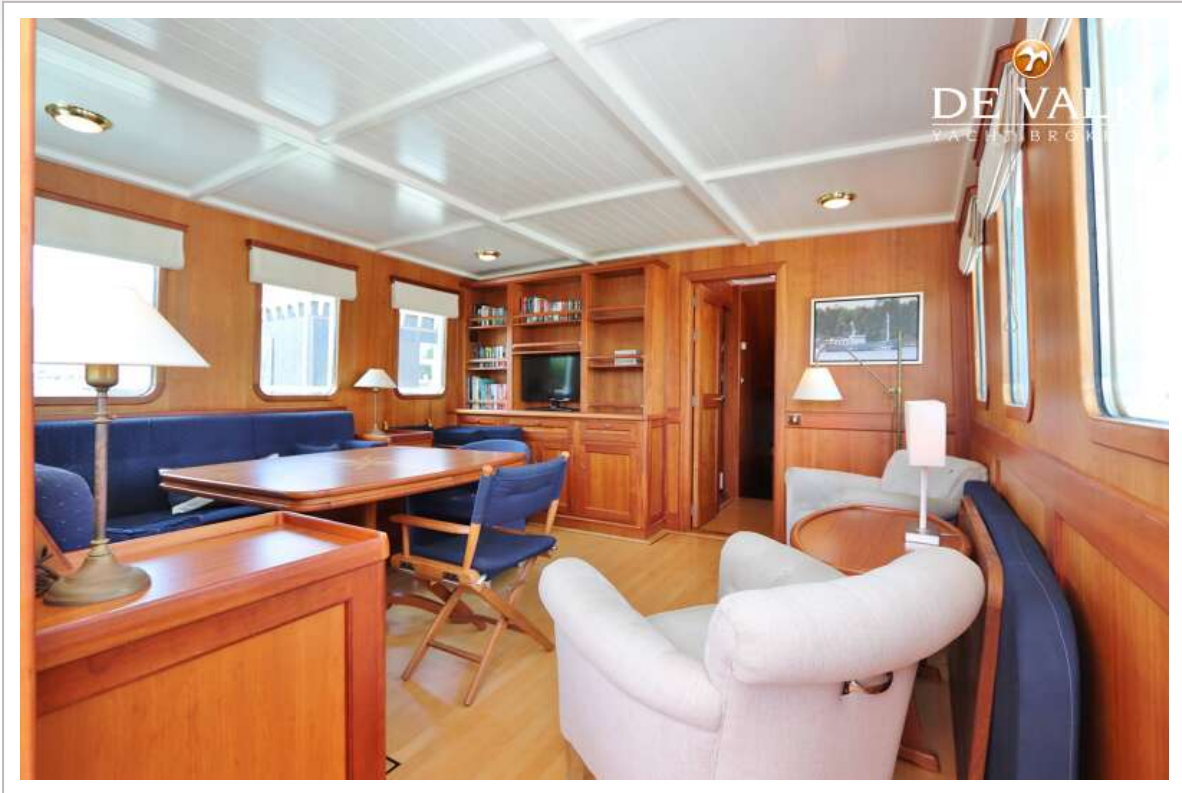




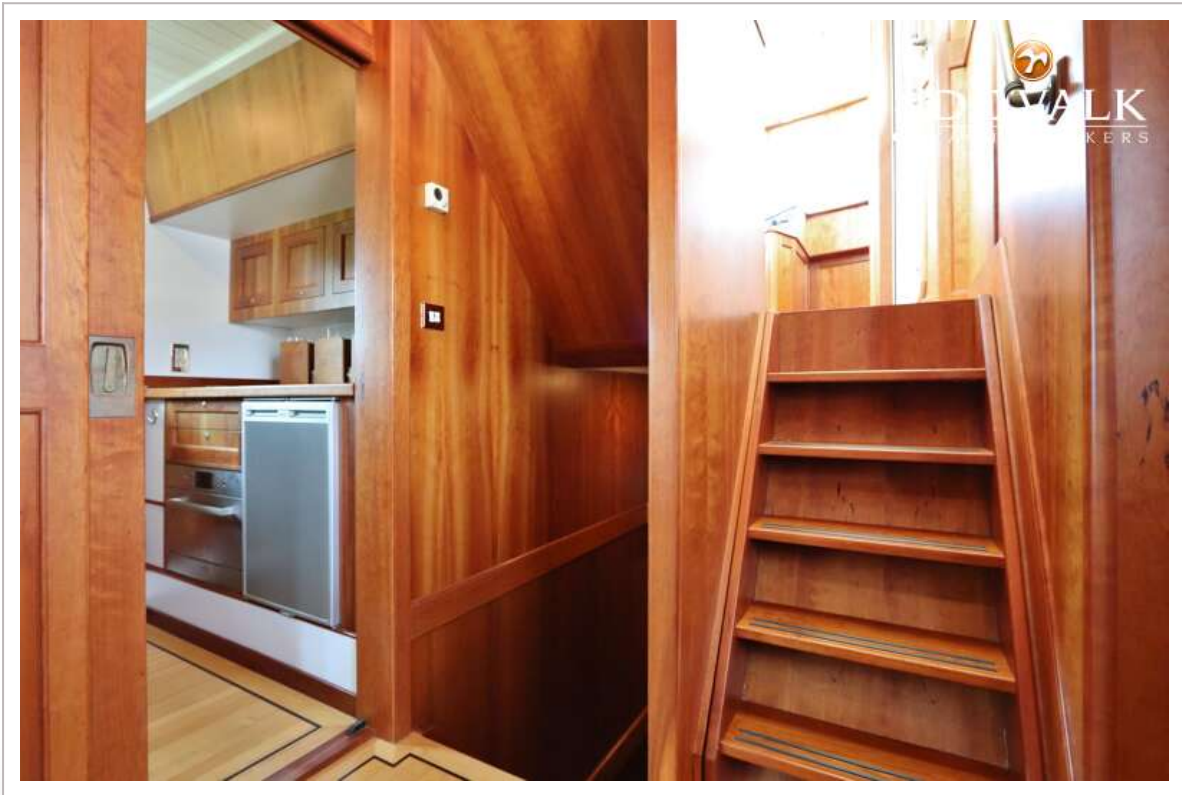
EXPLORER EXPEDITION VESSEL 85



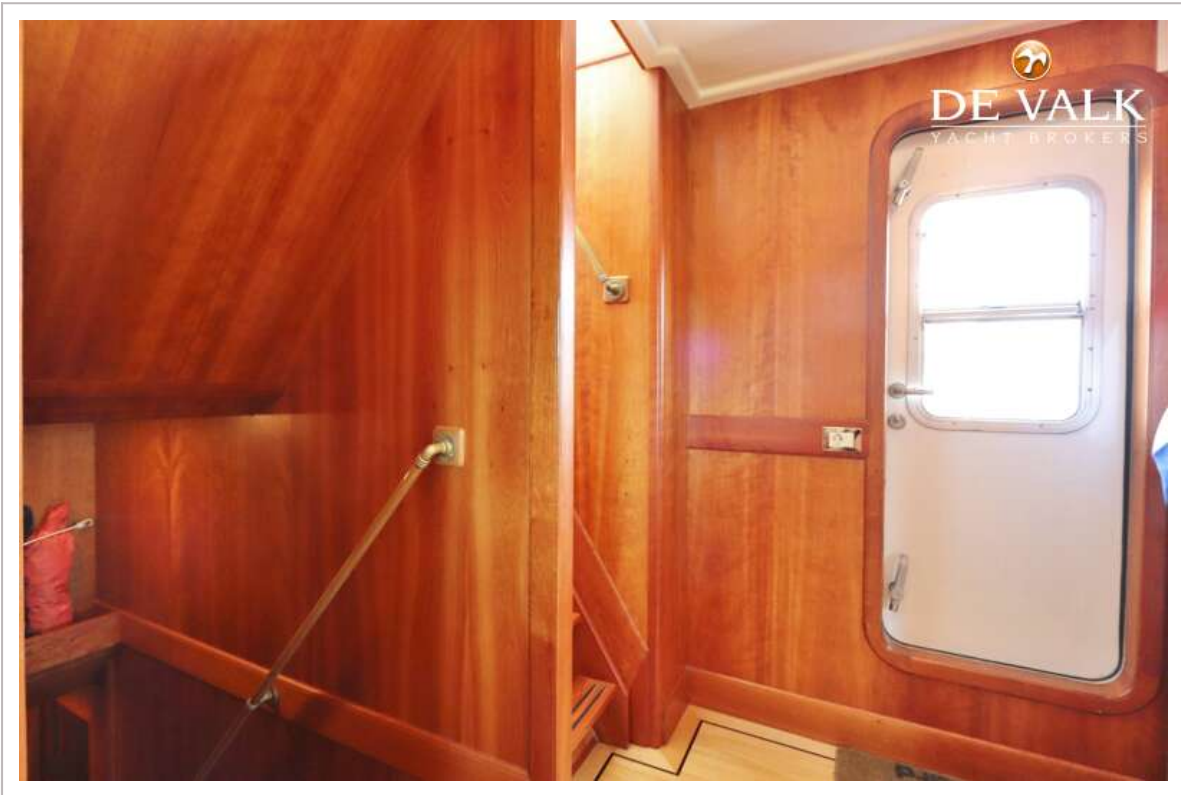
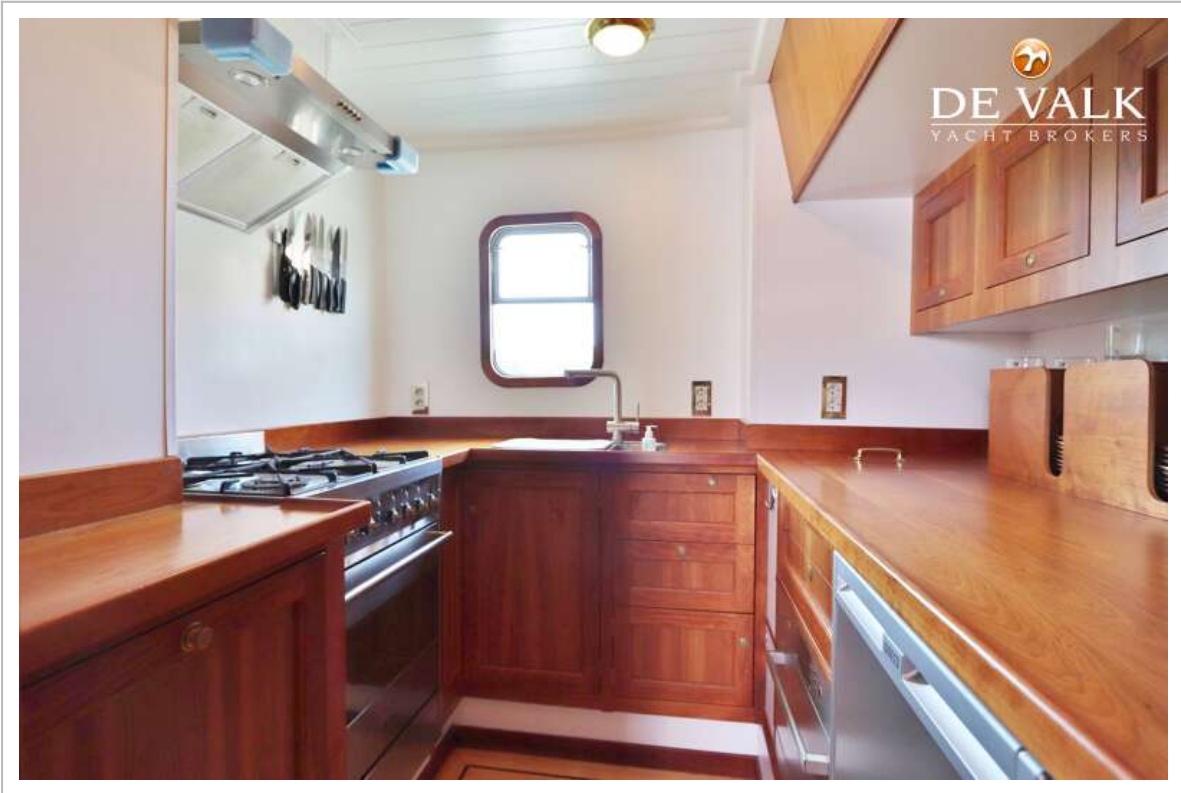
EXPLORER EXPEDITION VESSEL 85



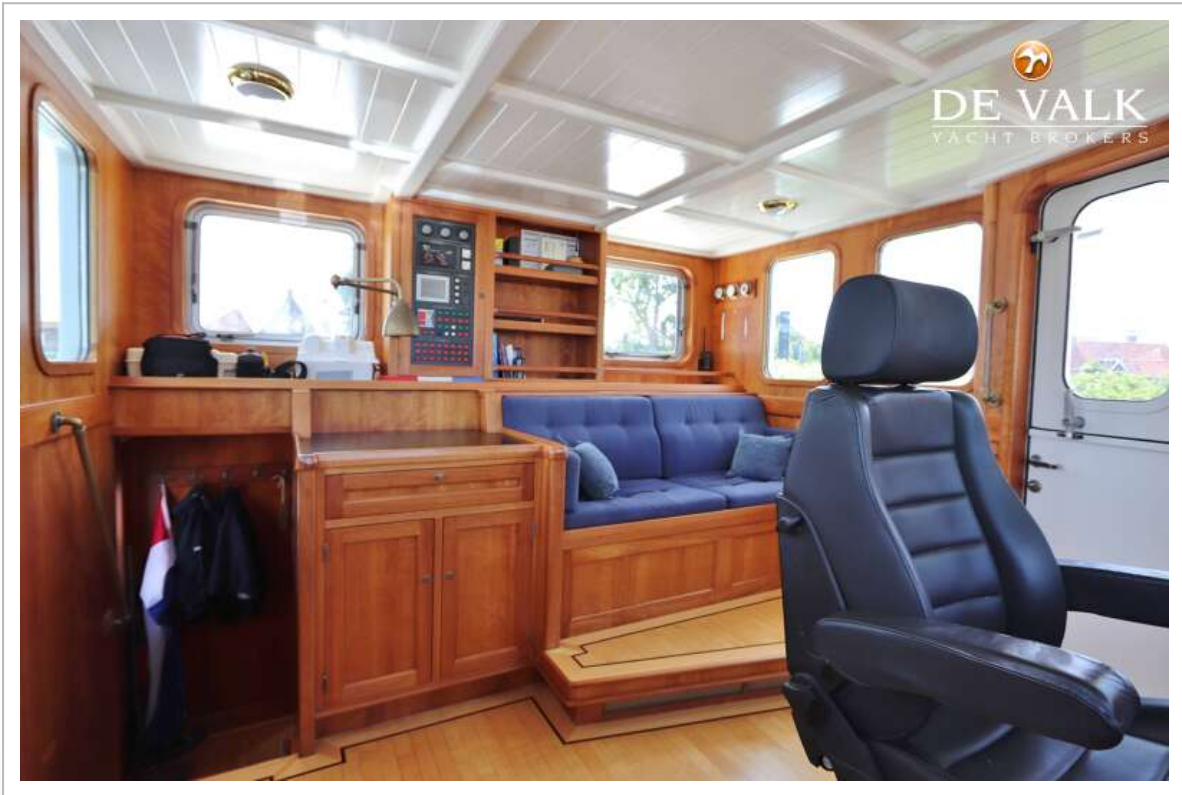
EXPLORER EXPEDITION VESSEL 85



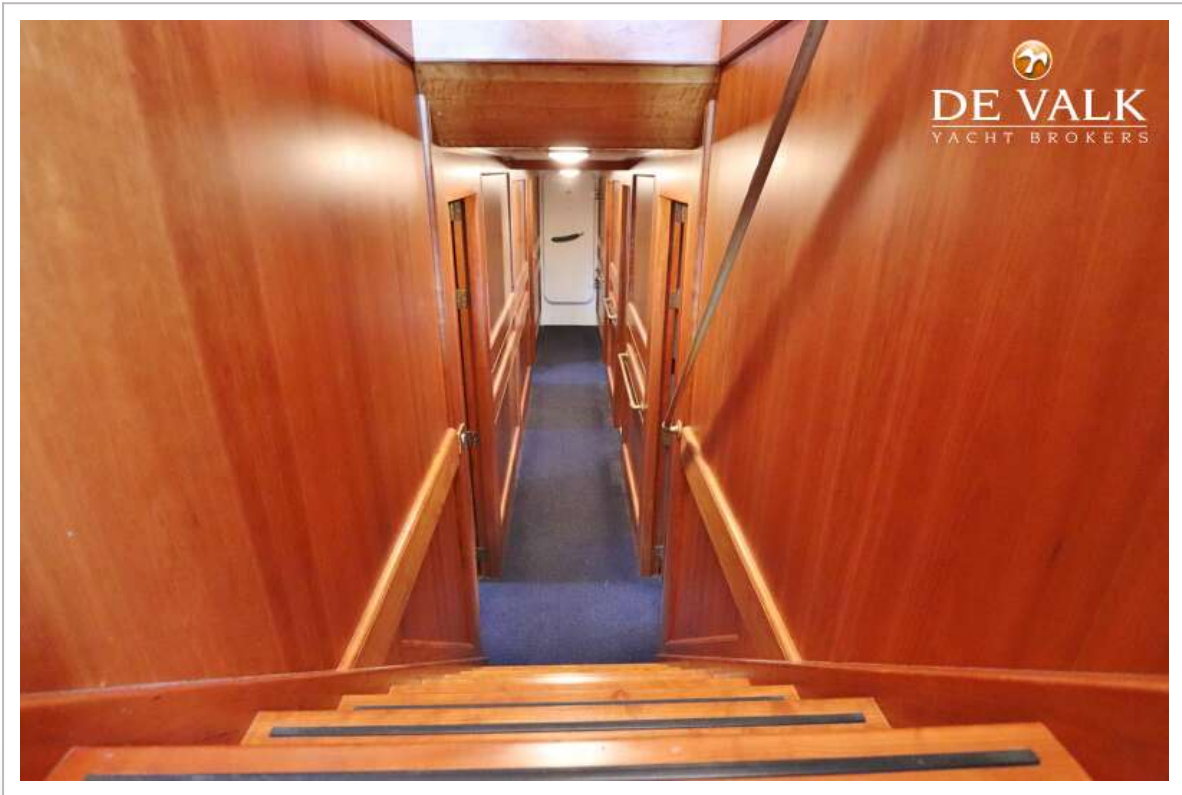
EXPLORER EXPEDITION VESSEL 85



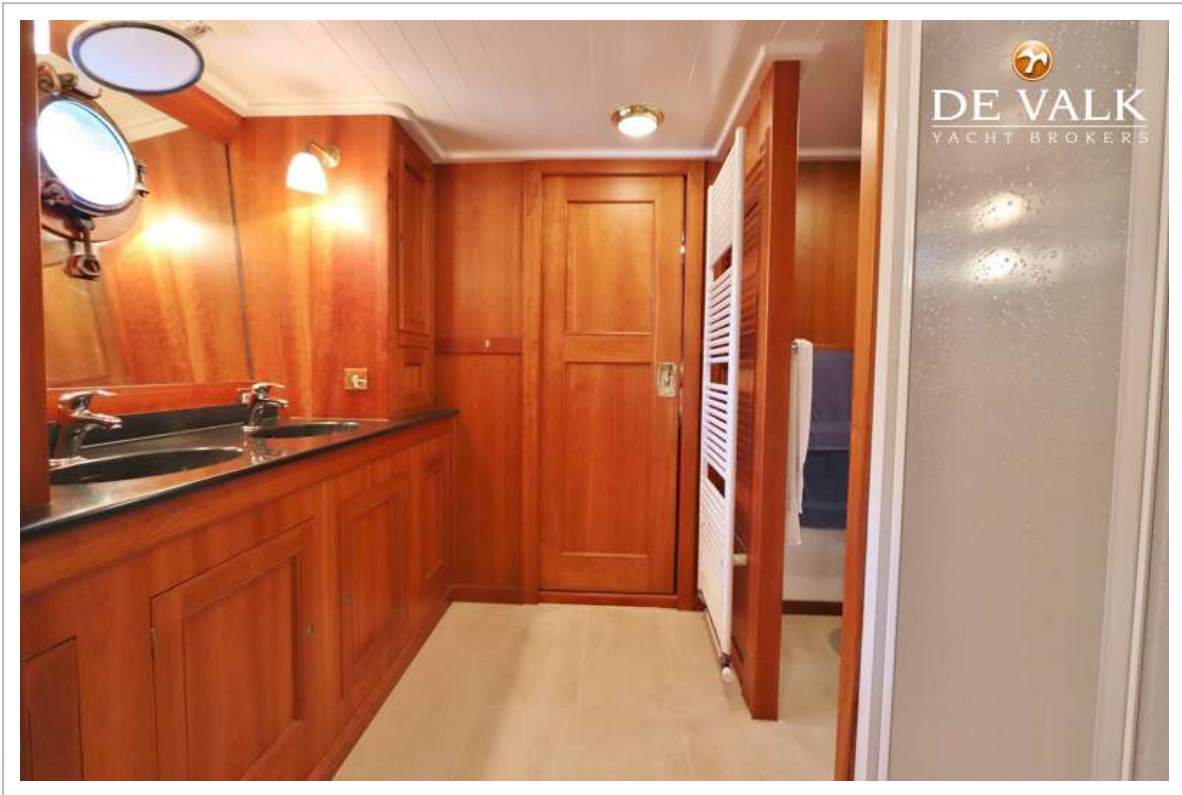
EXPLORER EXPEDITION VESSEL 85

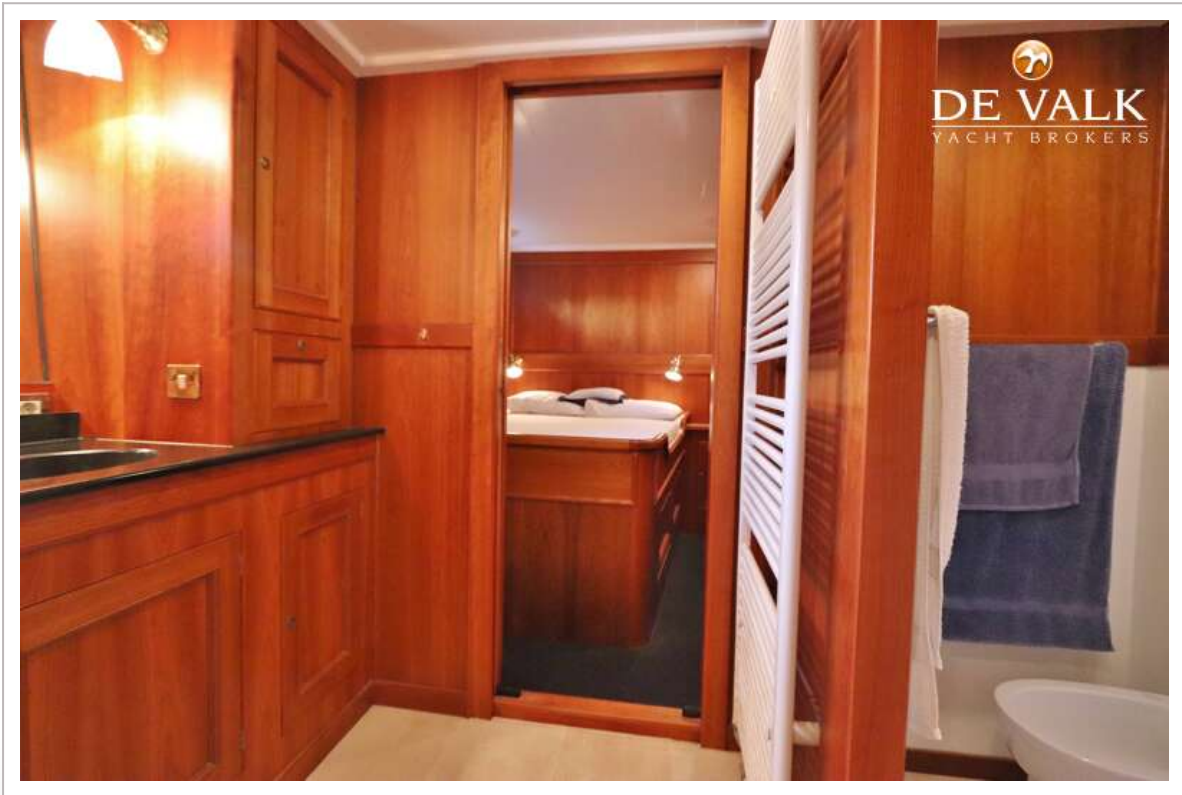
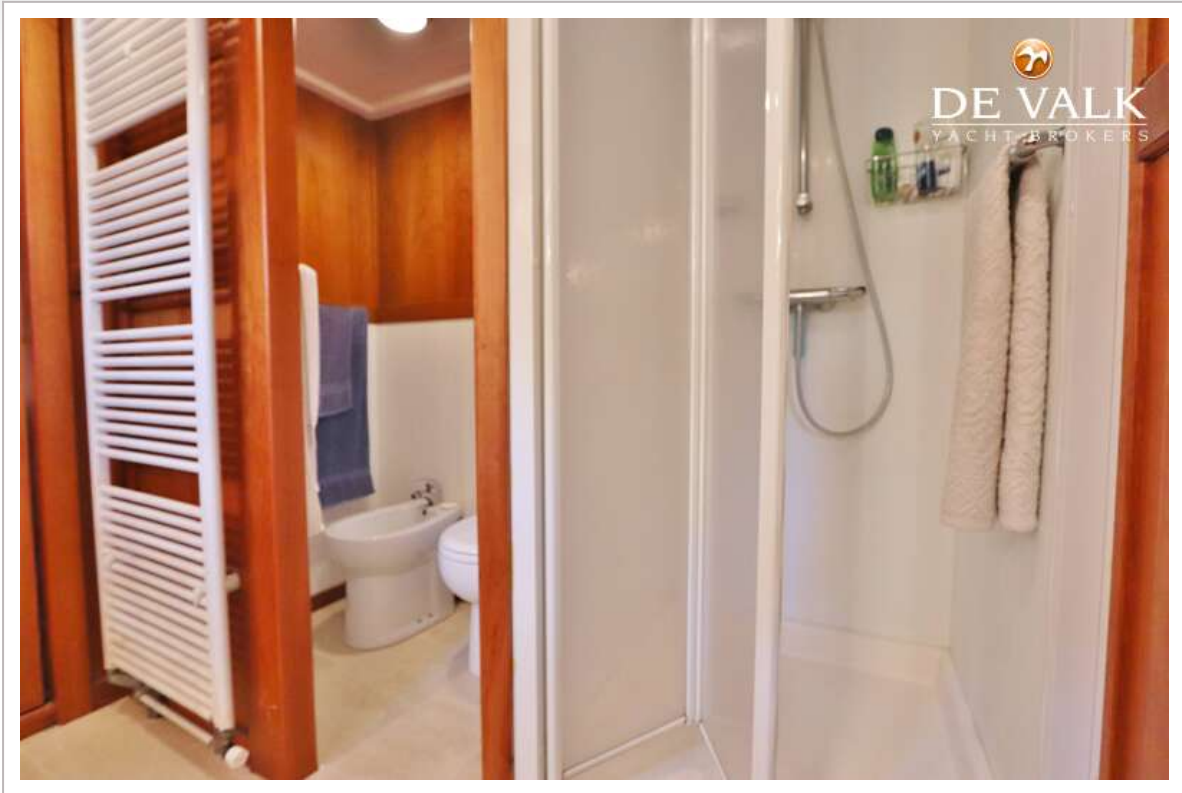


EXPLORER EXPEDITION VESSEL 85



EXPLORER EXPEDITION VESSEL 85



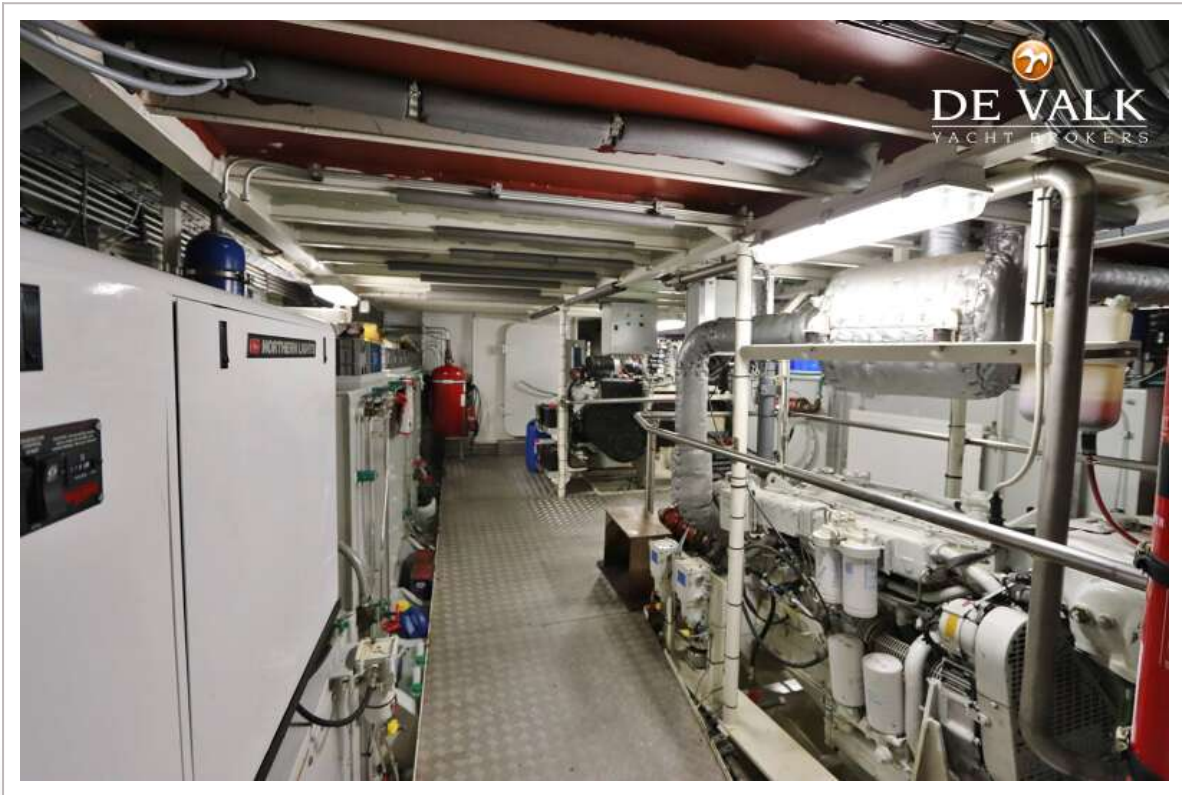




EXPLORER EXPEDITION VESSEL 85

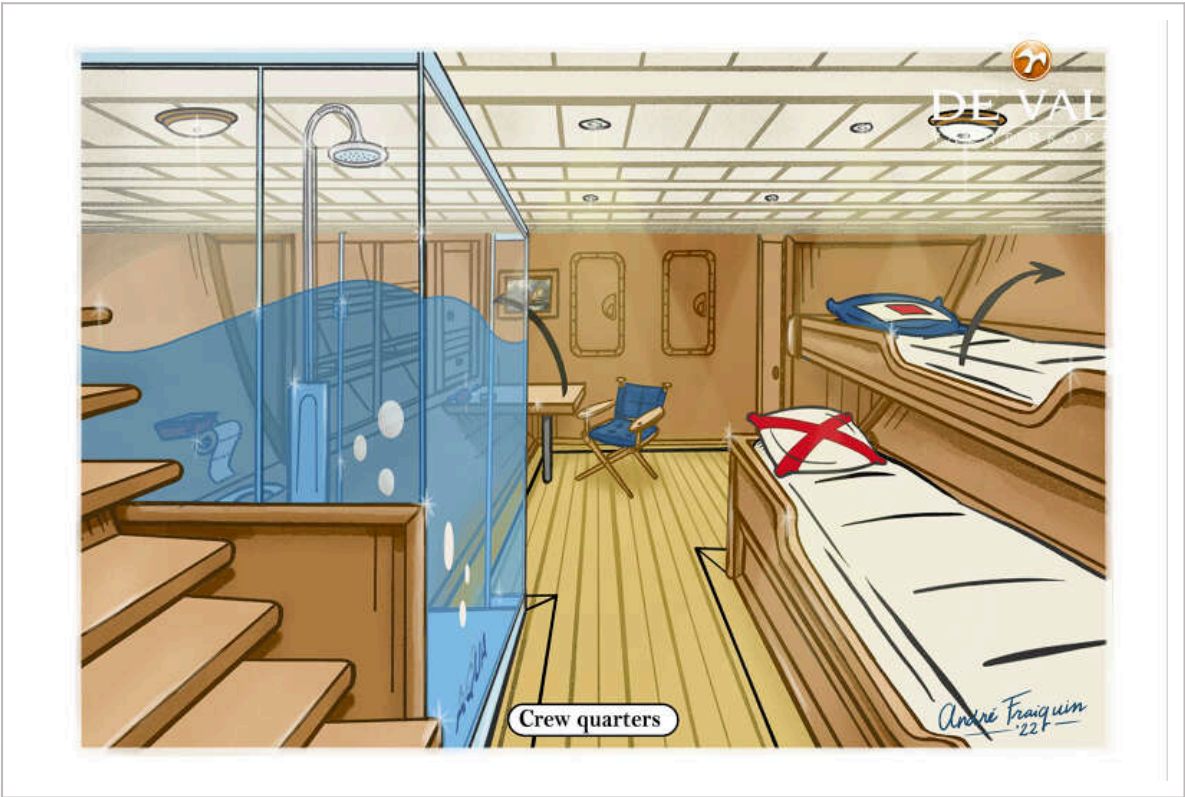
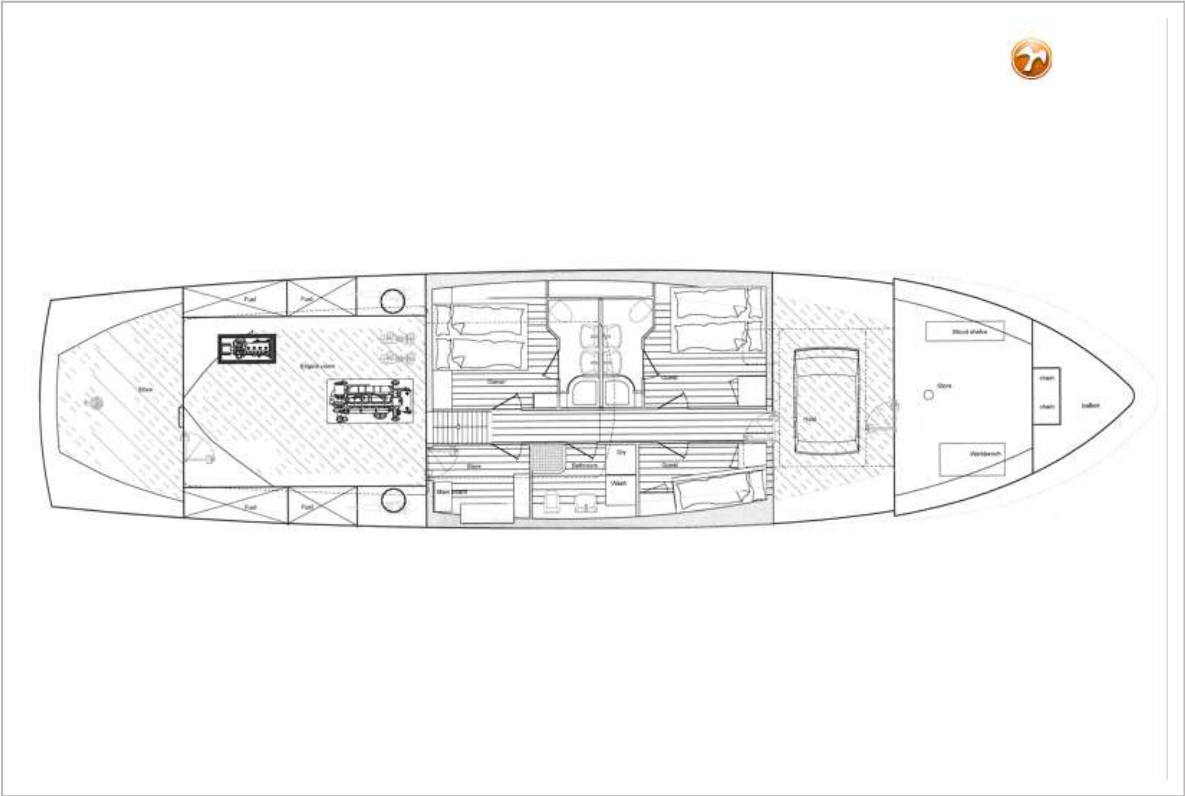



DE VALK
YACHT BROKERS




DE VALK
YACHT BROKERS







EXPLORER EXPEDITION VESSEL 85

