



GRAND BANKS 36 CLASSIC

GRAND BANKS 36 CLASSIC

BROKER'S COMMENTS

This Grand Banks 36 Classic "Zeeleeuw" is one of the finest Grand Banks 36 Classic models in the market at this moment and is equipped with a French berth! Equipped with two Ford diesel engines, electric bow thruster etc. This Grand Banks is definitely worth a visit. You are very welcome to visit her in our covered sales marina in Sneek.

Hans Visser

SPECIFICATIONS

Dimensions	11.23 x 3.86 x 1.22 (m)	Builder	American Marine Ltd
Built	1991	Cabins	2
Material	GRP	Berths	4
Engine(s)	2 x Ford Super 135 2725E diesel	Hp/Kw	2 x 135.00 (hp), 99.22 (kw)
Asking price	sold (VAT)	Lying	at sales office

CONTACT

Sales office	De Valk Sneek	Telephone	+31 515 42 80 30
Address	Zwolsmanweg 7 8606 KC Sneek The Netherlands	E-mail	sneek@devalk.nl

DISCLAIMER

These particulars are given in good faith as supplied but cannot be guaranteed.



GRAND BANKS 36 CLASSIC

GENERAL

Model	GRAND BANKS 36 CLASSIC
Type	motor yacht
LOA (m)	11,23
Beam (m)	3,86
Draft (m)	1,22
Air draft (m)	3,90
Year built	1991
Builder	American Marine Ltd
Country	Malaysia
Designer	Ken Smith
Displacement (t)	12
Hull material	GRP
Hull colour	white
Superstructure material	GRP
Deck material	GRP
Deck finish	teak
Window frame	wood
Window material	glass
Flybridge	yes
Flybridge cover	yes
Mast can be lowered	manual
Steadying sail with mast	yes
Fuel tank (litre)	1500
Freshwater tank (litre)	580
Blackwater tank (litre)	yes
Wheel steering	mechanical
Inside helm position	yes
Flybridge helm position	yes

ACCOMMODATION



GRAND BANKS 36 CLASSIC

Cabins	2
Berths	4
Heating	diesel ducted hot air Eberspacher
Air-conditioning	Crusair
Galley	yes
Countertop	yes
Sink	stainless steel
Cooker	calor gas 3-burner
Oven	yes
Fridge	with freezer compartment
Hot water system	220V + engine
Water pressure system	yes
Owners cabin	french bed
Wardrobe	yes
Bathroom	en suite
Toilet	en suite
Toilet system	manual
Wash basin	in the bathroom
Shower	en suite
Guest cabin 1	v-bed
Wardrobe	yes
Bathroom	en suite
Toilet	en suite
Toilet system	manual
Wash basin	in the bathroom
Shower	en suite
Washing machine	yes

MACHINERY

No of engines	2
Make	Ford Super 135



GRAND BANKS 36 CLASSIC

Type	2725E
HP	135,00
kW	99,22
Fuel	diesel
Engine cooling system	freshwater heat exchanger
Drive	shaft
Engine controls	mechanical
Gearbox	hydraulic Velvet
Bowthruster	electric Vetus
Propeller type	fixed
Propeller shaft material	stainless steel
Electric bilge pump	yes
Generator	Fisher Panda
Batteries	yes
Battery charger	Sentry
Shorepower	with cable

NAVIGATION

Compass	Liquid compass
Depth sounder	Cetrek
Log	Cetrek
Windset	Plastimo
Radar	Raytheon R40X
Plotter	VDO map 10E
Navtex	ICS nav4
Searchlight	yes

EQUIPMENT

Fixed windscreen	yes
Bimini	yes
Bathing platform	yes



GRAND BANKS 36 CLASSIC

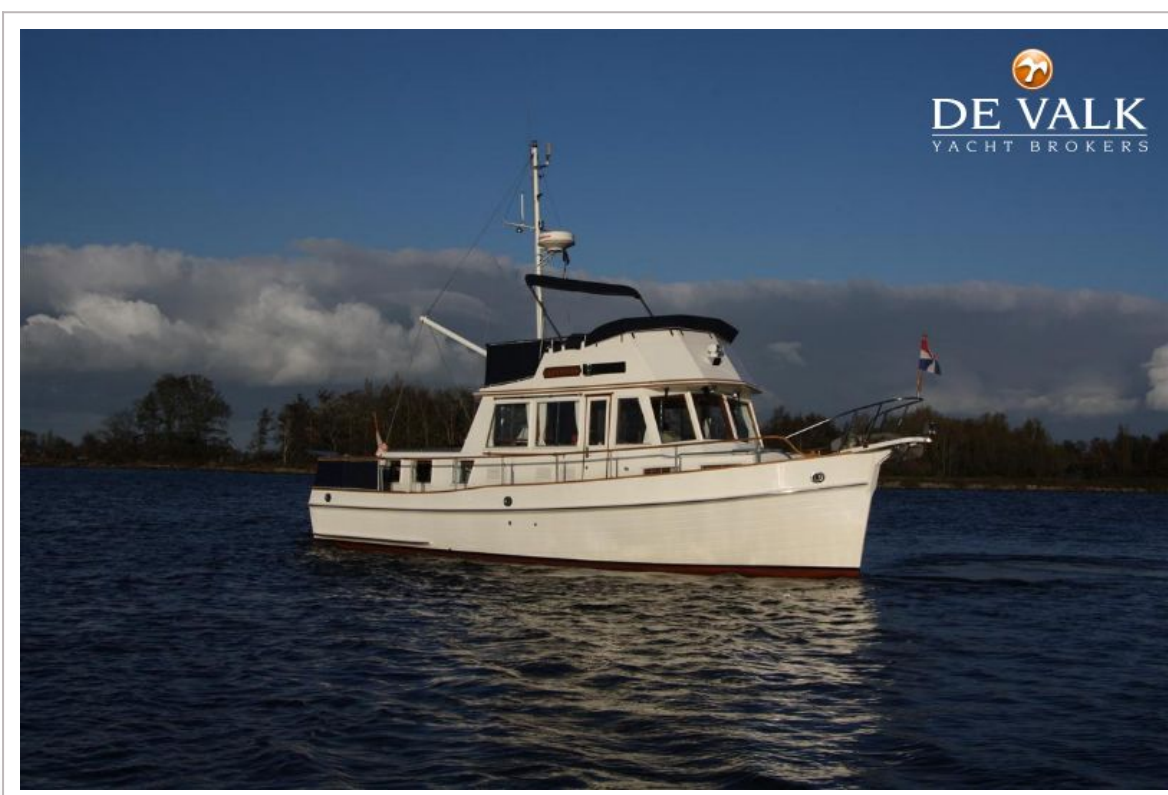
Boarding ladder	yes
Deck shower	yes
Anchor	yes
Anchor chain	yes
Windlass	electrical Lofrance
Davits	stainless steel
Sea railing	Stainless steel and wood
Wiper	yes
Horn	yes
Fenders	yes
Mooring lines	yes
Clock - barometer	Clock / baro / hygrometer



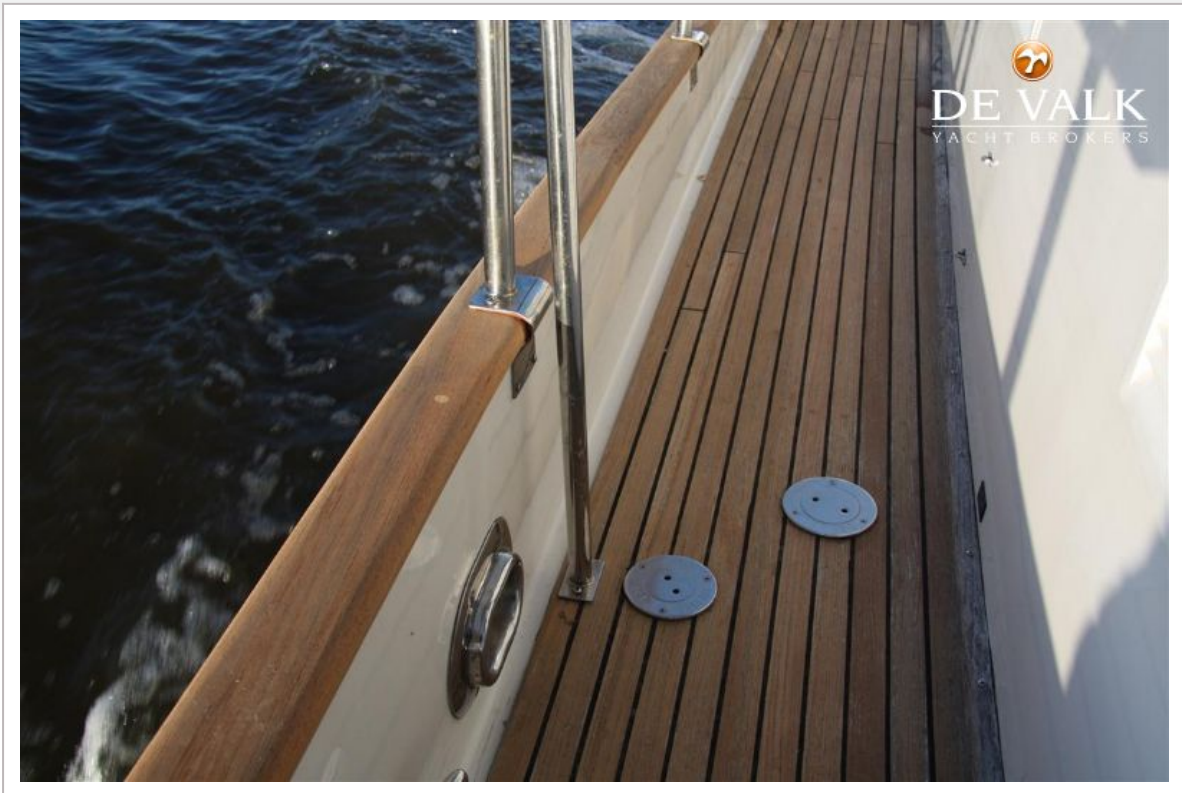
GRAND BANKS 36 CLASSIC



GRAND BANKS 36 CLASSIC



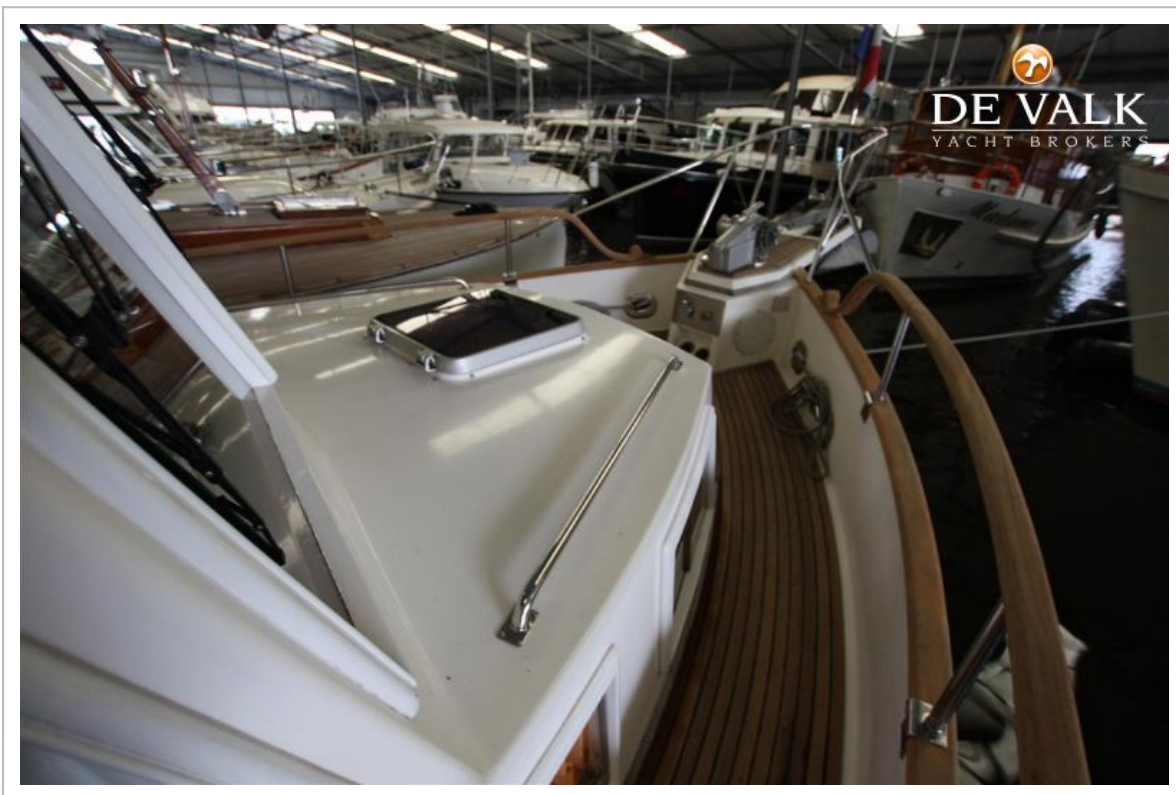
GRAND BANKS 36 CLASSIC



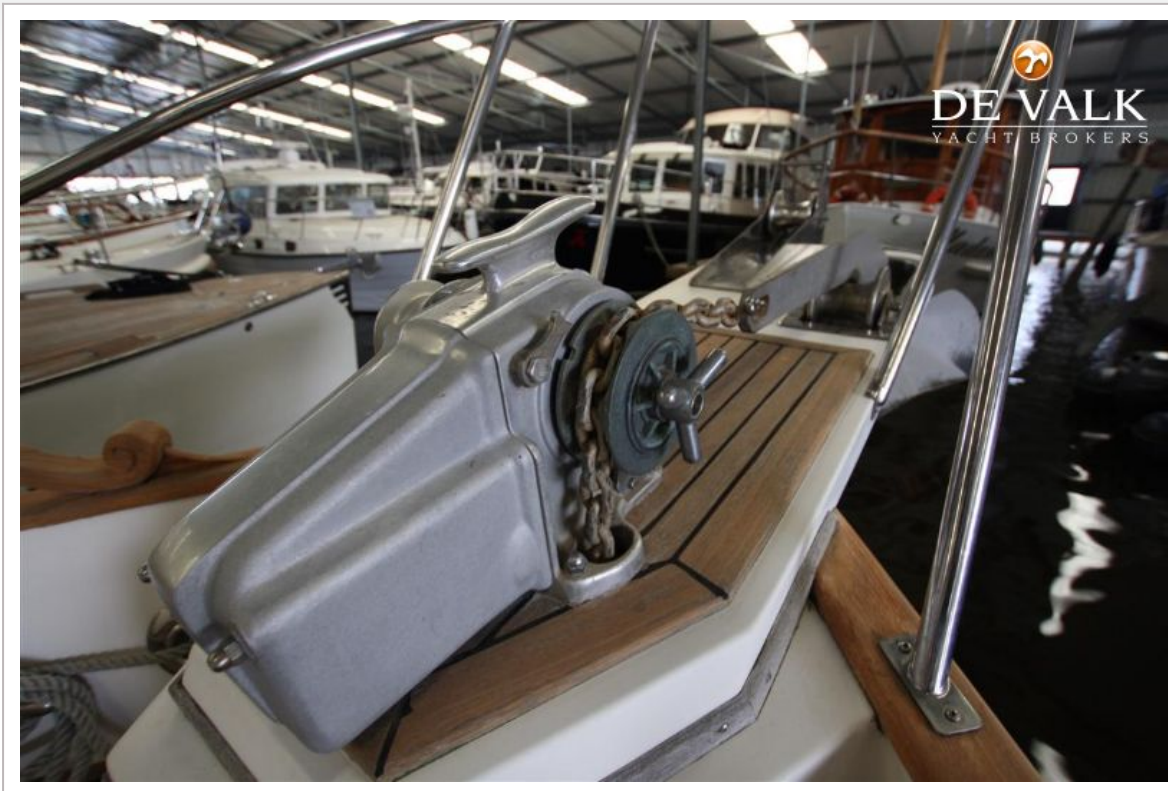
GRAND BANKS 36 CLASSIC



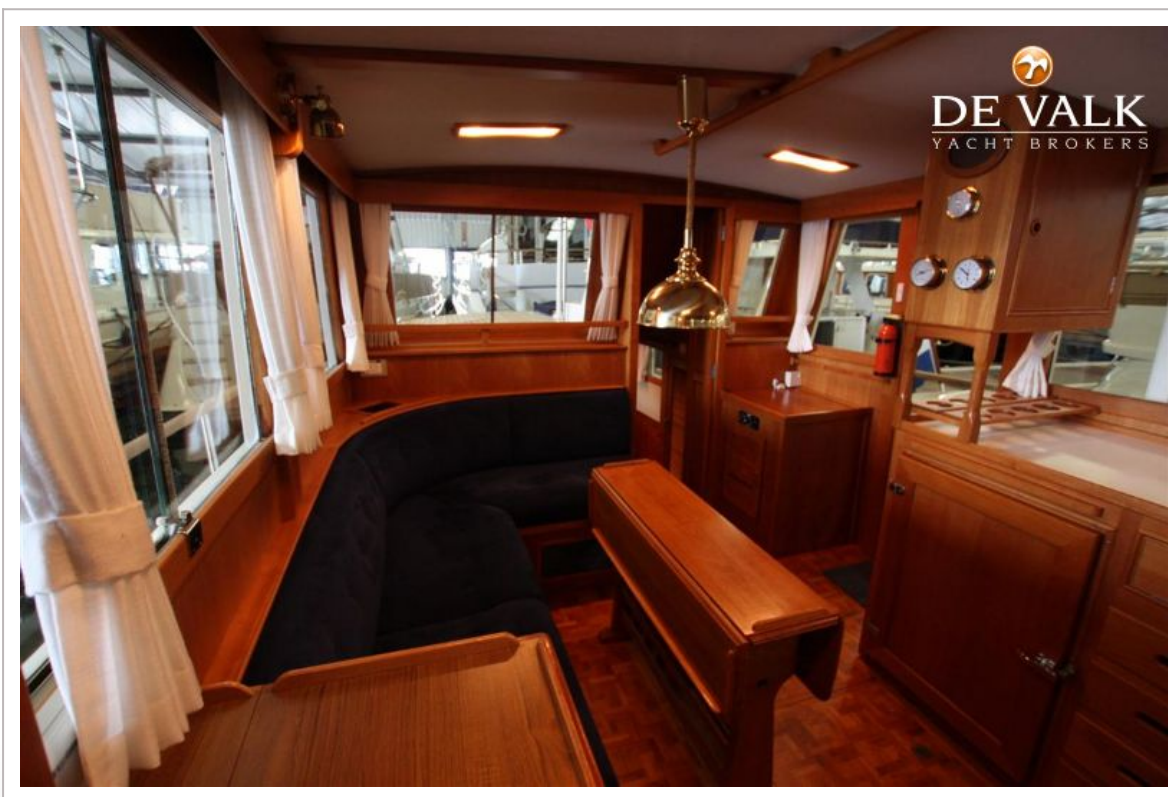
GRAND BANKS 36 CLASSIC



GRAND BANKS 36 CLASSIC



GRAND BANKS 36 CLASSIC



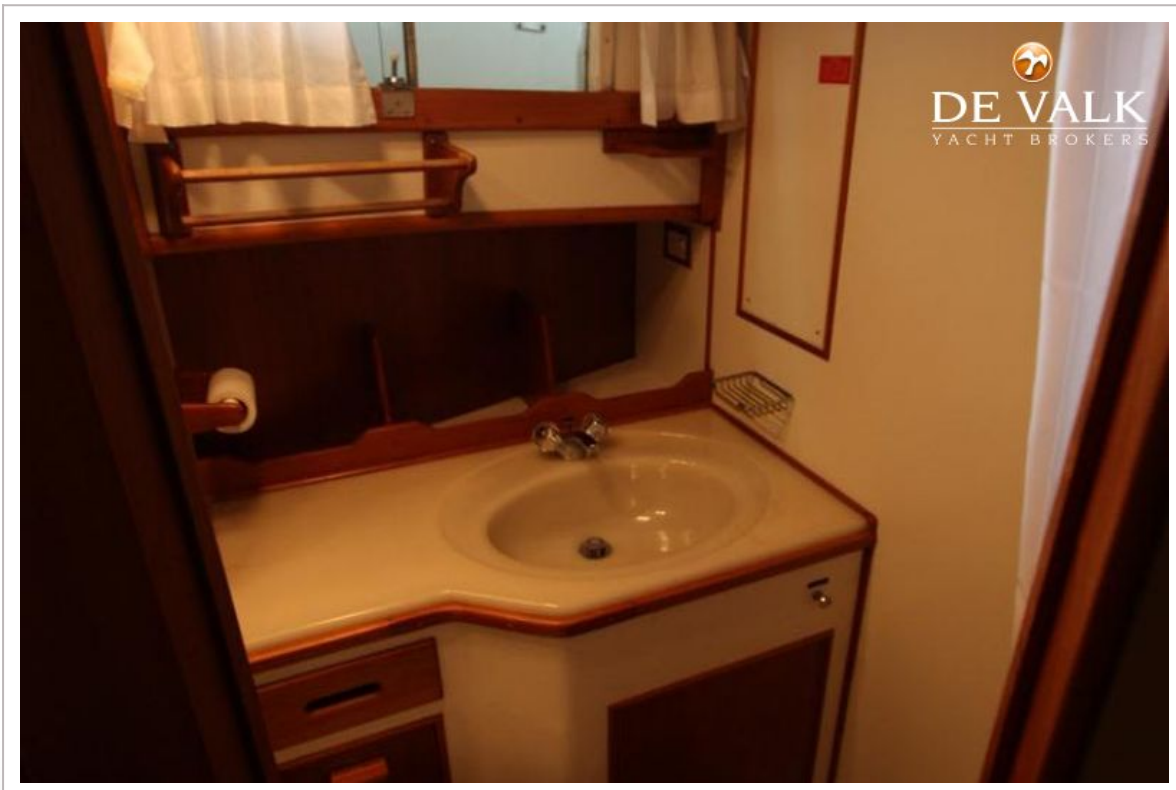
GRAND BANKS 36 CLASSIC



GRAND BANKS 36 CLASSIC



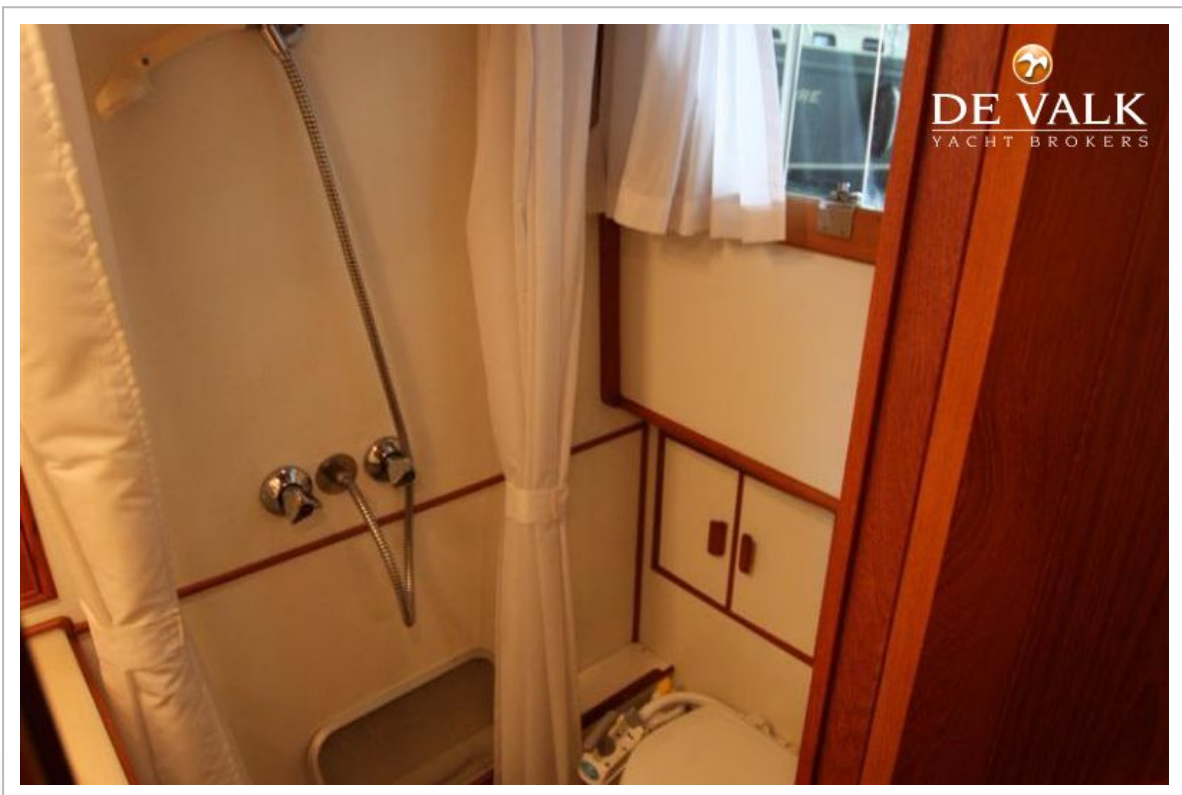
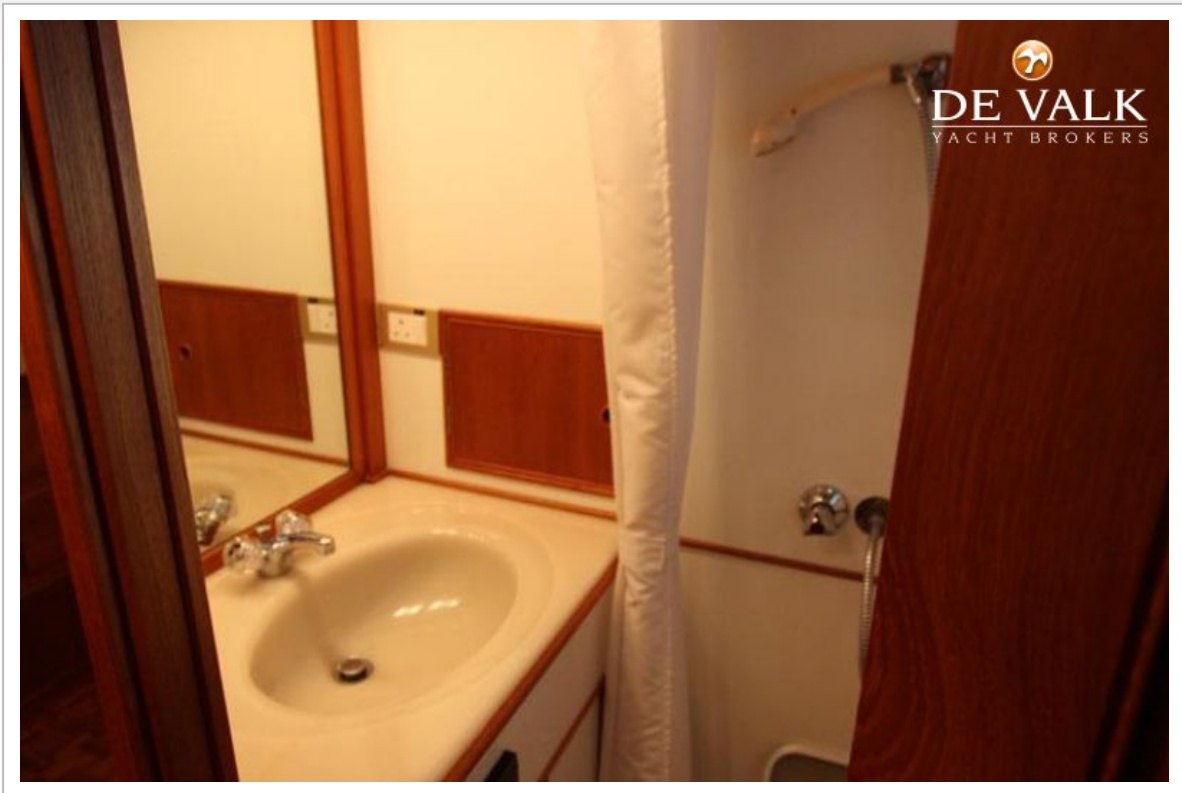
GRAND BANKS 36 CLASSIC



GRAND BANKS 36 CLASSIC



GRAND BANKS 36 CLASSIC



GRAND BANKS 36 CLASSIC

