



DE VALK  
YACHT BROKERS



AMS TRAWLER 480



DE VALK  
YACHT BROKERS

# AMS TRAWLER 480

## BROKER'S COMMENTS

This AMS Trawler has a three cabin layout with two bathrooms and combines comfort with functionality and quality. She is designed for a longer stay on board, even in the winters due to her Kabola central heating. "Aquavite" is easy to sail thanks to her twin Iveco Aifo 300 hp diesel engines and mooring is easy as she has a hydraulic bow- and sternthruster.

*Arne Doodeman*

## SPECIFICATIONS

<b>Dimensions</b>	16.80 x 4.73 x 1.15 (m)	<b>Builder</b>	Tong Hwa industries co. LTD
<b>Built</b>	1993	<b>Cabins</b>	3
<b>Material</b>	GRP	<b>Berths</b>	7
<b>Engine(s)</b>	2 x Iveco Aifo 8060 SRM33 diesel	<b>Hp/Kw</b>	2 x 330.00 (hp), 242.55 (kw)
<b>Asking price</b>	sold (VAT )	<b>Lying</b>	at sales office

## CONTACT

<b>Sales office</b>	De Valk Sneek	<b>Telephone</b>	+31 515 42 80 30
<b>Address</b>	Zwolsmanweg 7 8606 KC Sneek The Netherlands	<b>E-mail</b>	sneek@devalk.nl

## DISCLAIMER

These particulars are given in good faith as supplied but cannot be guaranteed.



# AMS TRAWLER 480

## GENERAL

<b>Model</b>	AMS TRAWLER 480
<b>Type</b>	motor yacht
<b>LOA (m)</b>	16,80
<b>LWL (m)</b>	13,80
<b>Beam (m)</b>	4,73
<b>Draft (m)</b>	1,15
<b>Air draft (m)</b>	4,00
<b>Headroom (m)</b>	2,00
<b>Year built</b>	1993
<b>Builder</b>	Tong Hwa industries co. LTD
<b>Country</b>	Taiwan
<b>Designer</b>	AMS Marina Yachts
<b>Displacement (t)</b>	18
<b>CE norm</b>	B
<b>Hull material</b>	GRP
<b>Hull colour</b>	white
<b>Hull shape</b>	deep-V
<b>Keel type</b>	fin keel
<b>Superstructure material</b>	GRP
<b>Rubbing strake</b>	stainless steel
<b>Deck material</b>	GRP
<b>Deck finish</b>	teak
<b>Superstructure deck finish</b>	anti-slip moulded in
<b>Window frame</b>	aluminium
<b>Window material</b>	tempered glass
<b>Portholes</b>	aluminium
<b>Flybridge</b>	yes
<b>Radar arch</b>	collapsible
<b>Mast can be lowered</b>	manual
<b>Fuel tank (litre)</b>	stainless steel 1500



# AMS TRAWLER 480

Level indicator (fuel tank)	yes
Freshwater tank (litre)	polyethylene 800
Level indicator (freshwater)	yes
Blackwater tank (litre)	polyethylene 200
Level indicator (blackwater)	yes
Wheel steering	hydraulic
Inside helm position	yes
Outside helm position	hydraulic

## ACCOMMODATION

Cabins	3
Berths	7
Interior	teak
Floor	carpet
Aft deck	yes
Saloon	yes
Headroom saloon (m)	2 m
Heating	central heating Kabola
Aft Cabin	yes
Galley	yes
Countertop	corian
Sink	stainless steel
Cooker	ceramic
Microwave	Bosch
Fridge	with freezer compartment 2x Isotherm 110 ltr
Hot water system	220V + engine
Water pressure system	electrical
Owners cabin	French bed
Wardrobe	hanging and drawers
Bathroom	separate
Toilet	separate



# AMS TRAWLER 480

Toilet system	electric
Wash basin	in the bathroom
Shower	separate
Guest cabin 1	French bed
Wardrobe	hanging and drawers
Bathroom	shared
Toilet	shared
Toilet system	manual
Wash basin	in the bathroom
Shower	shared
Guest cabin 2	double bed + single bed
Wardrobe	hanging and drawers

## MACHINERY

No of engines	2
Make	Iveco
Type	Aifo 8060 SRM33
HP	330,00
kW	242,55
Fuel	diesel
Year installed	2003
Maximum speed (kn)	18
Engine hours	Ca. 977
Drive	shaft
Engine controls	electrical
Gearbox	hydraulic
Bowthruster	hydraulic
Sternthruster	hydraulic
Propeller type	fixed
Propeller shaft material	stainless steel
Shaft lubrication	water



# AMS TRAWLER 480

Electric bilge pump	yes
Electrical installation	yes
Generator	dry exhaust Mase 14,5 kW
Start battery	yes
Service battery	yes
Battery charger/inverter	2500 W
Shorepower	with cable

## NAVIGATION

Compass	yes
Electric compass	IS15
Depth sounder	IS15
Log	IS15
Windset	IS15
VHF	Simrad RS87
Autopilot	Simrad CE 32 Robertson AP20
Rudder angle indicator	yes
Radar/plotter	Simrad RA 52
Searchlight	yes

## EQUIPMENT

Bimini	yes
Bathing platform	yes
Boarding ladder	yes
Gangway	electric/hydraulic Besenzoni
Anchor	Pool
Anchor chain	yes
Windlass	hydraulic
Sea railing	stainless steel
Railing side opening gates	3x
Life raft	Autoflug



# AMS TRAWLER 480

Wiper	3x
Horn	electric
Fenders	yes
Mooring lines	yes
TV	Teckwood
Radio-cd player	Sharp
Extinguisher in engine room	yes



# AMS TRAWLER 480





# AMS TRAWLER 480



# AMS TRAWLER 480



# AMS TRAWLER 480





# AMS TRAWLER 480



# AMS TRAWLER 480





# AMS TRAWLER 480



# AMS TRAWLER 480





# AMS TRAWLER 480

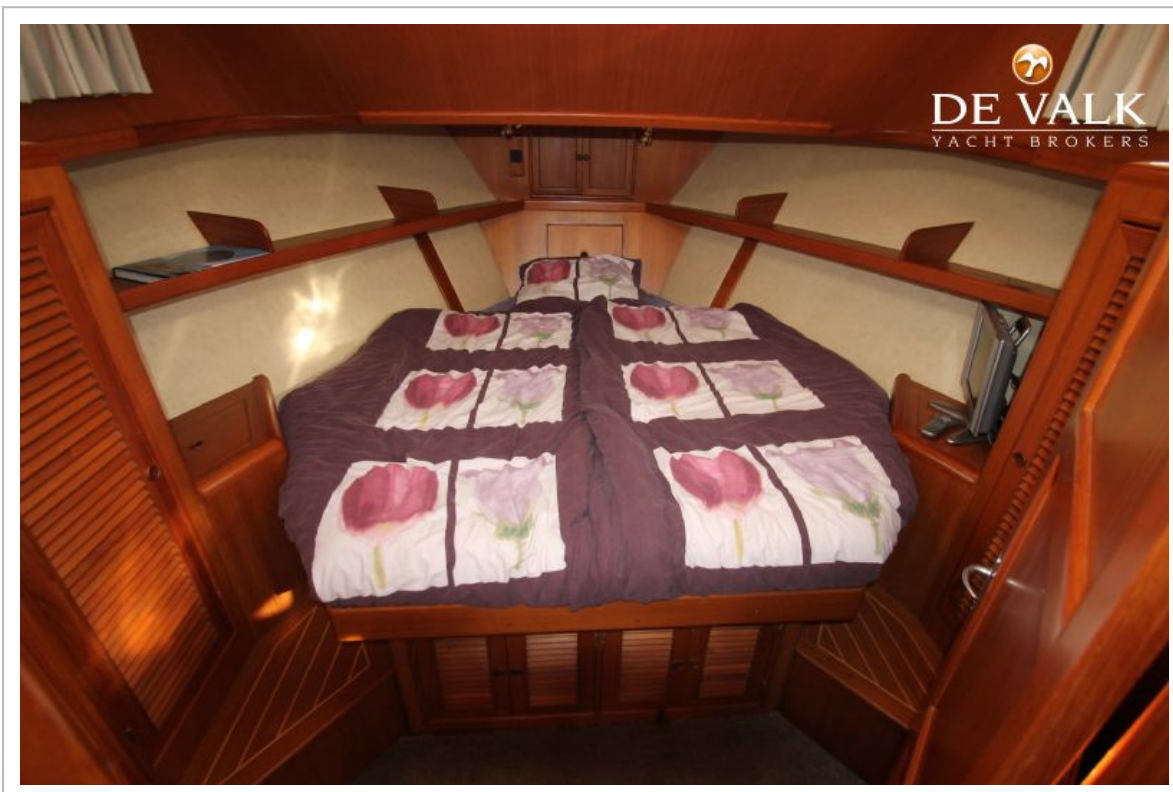




# AMS TRAWLER 480

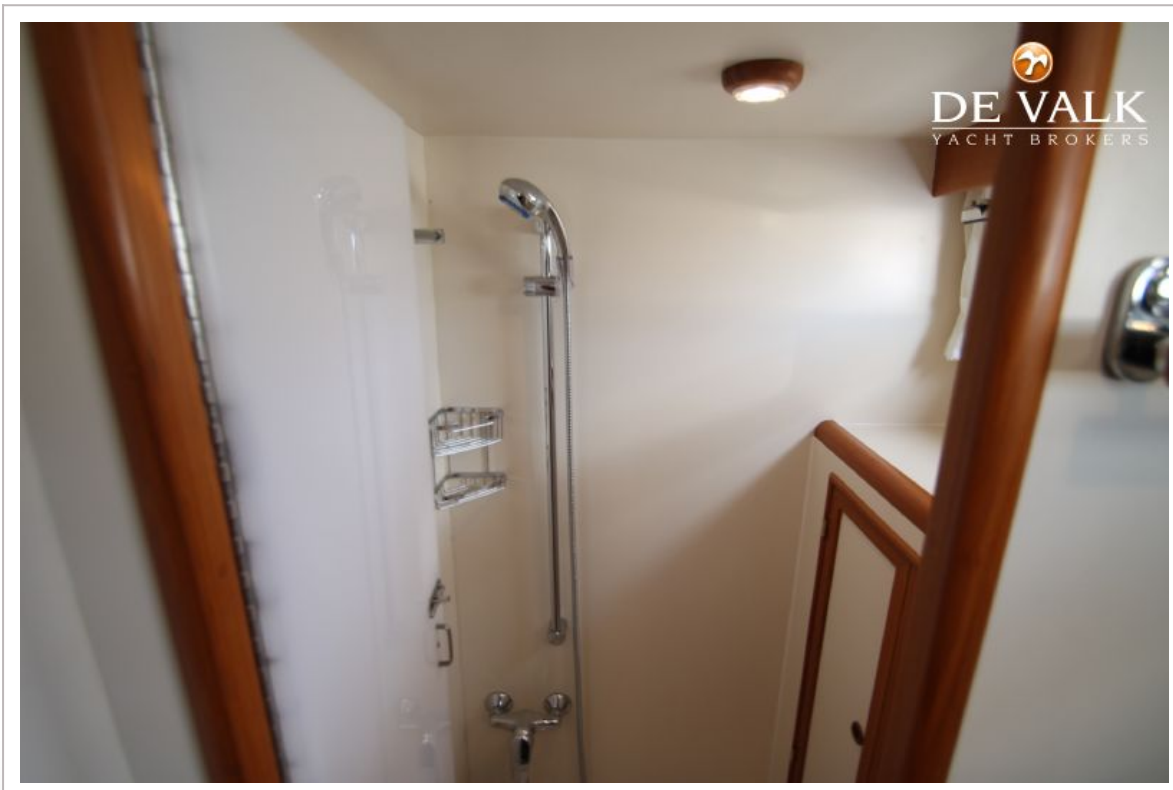


# AMS TRAWLER 480





# AMS TRAWLER 480

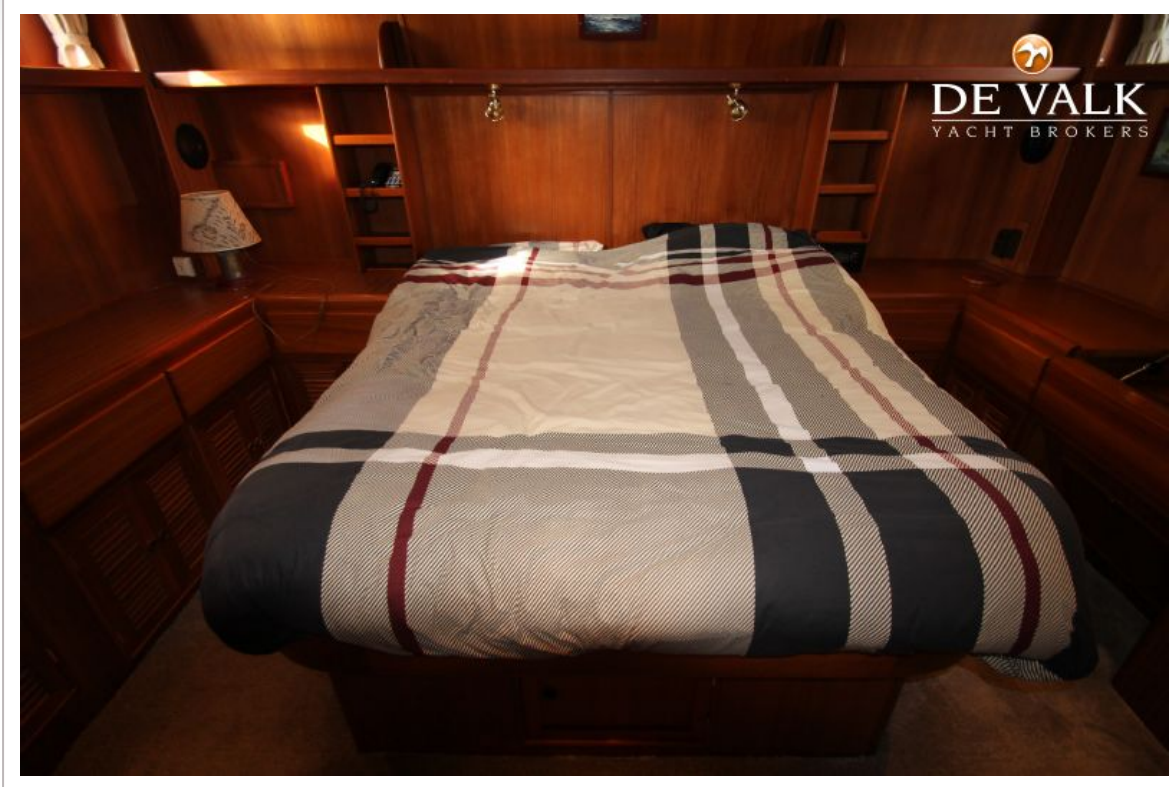


# AMS TRAWLER 480





# AMS TRAWLER 480



# AMS TRAWLER 480

