



DE VALK  
YACHT BROKERS



## CATFISH 1300



DE VALK  
YACHT BROKERS

# CATFISH 1300

## BROKER'S COMMENTS

Catfish 1300 "Captain Willem Barentsz" is built by Jachtbouw Peter Linskens and designed by Vripack. This spacious steel motor yacht is fitted with three cabins and three bathrooms! Large aftdeck with round seat and enough space for extra chairs to enjoy sailing with all your friends and family. Vetus Deutz 159 hp. diesel engine, electric bow- and sternthruster, Kabola central heating. Built for her first and only owner who kept her in luxury charter, delivery without VAT possible. Very well maintained and in a very nice condition! Viewing highly recommended.

*Arne Doodeman*

## SPECIFICATIONS

<b>Dimensions</b>	13.50 x 4.30 x 1.20 (m)	<b>Builder</b>	Jachtbouw Peter Linskens B.V.
<b>Built</b>	2003	<b>Cabins</b>	3
<b>Material</b>	Steel	<b>Berths</b>	6
<b>Engine(s)</b>	1 x Vetus Deutz DT64425E diesel	<b>Hp/Kw</b>	159.00 (hp), 116.87 (kw)
<b>Asking price</b>	sold (VAT )	<b>Lying</b>	elsewhere / Not at sales office

## CONTACT

<b>Sales office</b>	De Valk Sneek	<b>Telephone</b>	+31 515 42 80 30
<b>Address</b>	Zwolsmanweg 7 8606 KC Sneek The Netherlands	<b>E-mail</b>	sneek@devalk.nl

## DISCLAIMER

These particulars are given in good faith as supplied but cannot be guaranteed.



# CATFISH 1300

## GENERAL

<b>Model</b>	CATFISH 1300
<b>Type</b>	motor yacht
<b>LOA (m)</b>	13,50
<b>Beam (m)</b>	4,30
<b>Draft (m)</b>	1,20
<b>Air draft (m)</b>	3,00
<b>Year built</b>	2003
<b>Builder</b>	Jachtbouw Peter Linskens B.V.
<b>Country</b>	The Netherlands
<b>Designer</b>	Vripack
<b>Displacement (t)</b>	21
<b>CE norm</b>	B
<b>Hull material</b>	steel
<b>Hull colour</b>	blue
<b>Hull shape</b>	hard chine
<b>Superstructure material</b>	steel
<b>Rubbing strake</b>	stainless steel
<b>Deck material</b>	steel
<b>Deck finish</b>	anti-slip paint
<b>Antifouling (year)</b>	2015
<b>Window frame</b>	aluminium
<b>Deckhatch</b>	yes
<b>Portholes</b>	aluminium
<b>Insulation</b>	rockwool
<b>Radar arch</b>	collapsible
<b>Fuel tank (litre)</b>	steel 1200 l.
<b>Level indicator (fuel tank)</b>	yes
<b>Freshwater tank (litre)</b>	stainless steel 1000 l.
<b>Level indicator (freshwater)</b>	Vetus
<b>Blackwater tank (litre)</b>	stainless steel 200 l.



Level indicator (blackwater)	Vetus
Wheel steering	hydraulic
Flybridge helm position	yes
More info on paintwork	Superstructure painted in 2013 and hull painted in 2015

## ACCOMMODATION

Cabins	3
Berths	6
Floor	carpet
Aft deck	yes
Saloon	yes
Heating	central heating Kabola B12 tap
Heating 2	diesel ducted hot air Webasto Airtop 2000
Aft Cabin	yes
Dinette	yes
Opening door to aft deck	yes
Galley	yes
Countertop	yes
Sink	stainless steel
Cooker	calor gas Techimpex 4-burner
Extractor	yes
Microwave	LG Intelio microwave with grill
Fridge	with freezing compartment Coolmatic MDC-110
Hot water system	on central heating
Water pressure system	yes
Owners cabin	French bed
Wardrobe	hanging and shelves
Bathroom	en suite
Toilet	en suite
Toilet system	electric Techma
Wash basin	in the bathroom



# CATFISH 1300

<b>Guest cabin 1</b>	double bed
<b>Wardrobe</b>	hanging and shelves
<b>Bathroom</b>	en suite
<b>Toilet</b>	
<b>Toilet system</b>	electric Techma
<b>Wash basin</b>	in the bathroom
<b>Shower</b>	yes
<b>Guest cabin 2</b>	twin single
<b>Wardrobe</b>	shelves
<b>Bathroom</b>	en suite
<b>Toilet system</b>	electric Techma
<b>Wash basin</b>	in the bathroom
<b>Shower</b>	yes

## MACHINERY

<b>No of engines</b>	1
<b>Make</b>	Vetus Deutz
<b>Type</b>	DT64425E
<b>HP</b>	159,00
<b>kW</b>	116,87
<b>Fuel</b>	diesel
<b>Year installed</b>	2003
<b>Consumption (l/hr)</b>	8
<b>Engine hours</b>	5500 (18-2-2016)
<b>Engine cooling system</b>	freshwater heat exchanger
<b>Drive</b>	shaft
<b>Engine controls</b>	manual
<b>Gearbox</b>	hydraulic ZF 45-1
<b>Bowthruster</b>	electric Sidepower
<b>Sternthruster</b>	electric Sidepower
<b>Exhaust</b>	watercooled



# CATFISH 1300

<b>Thrust bearing</b>	Aquadrive
<b>Propeller type</b>	fixed
<b>Propeller blades</b>	4-bladed
<b>Propeller shaft material</b>	stainless steel
<b>Shaft lubrication</b>	water
<b>Electric bilge pump</b>	yes
<b>Electrical installation</b>	yes
<b>Start battery</b>	engine start over bowthruster battery
<b>Service battery</b>	2x 260 ah zenith deep cycle
<b>Bowthruster battery</b>	2x 165 ah
<b>Sternthruster battery</b>	2x 165 ah
<b>Battery monitor</b>	Victron Phoenix multi control
<b>Battery charger/inverter</b>	Victron Phoenix multi plus 24/3000/70
<b>Shorepower</b>	with cable
<b>Extra info</b>	separate fuel filter
<b>Extra info</b>	approx. 5500 engine hours, the clock is renewed

## NAVIGATION

<b>Electric compass</b>	Raymarine ST60+
<b>Depth sounder</b>	Raymarine ST60 tridata
<b>Log</b>	Raymarine ST60 tridata
<b>Rudder angle indicator</b>	Raymarine ST60

## EQUIPMENT

<b>Sprayhood</b>	yes
<b>Cockpit cover</b>	yes
<b>Winter cover</b>	yes
<b>Cockpit cushions</b>	yes
<b>Cockpit table</b>	yes
<b>Bathing platform</b>	yes
<b>Boarding ladder</b>	stainless steel



<b>Transom door</b>	yes
<b>Deck shower</b>	yes
<b>Anchor</b>	Danforth
<b>Anchor chain</b>	galvanized chain
<b>Windlass</b>	manual Vetus
<b>Sea railing</b>	stainless steel
<b>Grab rail (superstructure)</b>	stainless steel
<b>Railing side opening gates</b>	yes
<b>Wiper</b>	3x Vetus heavy duty
<b>Horn</b>	yes
<b>Fenders</b>	yes
<b>Mooring lines</b>	yes
<b>TV</b>	Avtex flatscreen
<b>TV receiver</b>	yes
<b>Surround Sound System</b>	Sony home audio system
<b>Fire extinguisher</b>	yes
<b>Extinguisher in engine room</b>	Firepro





# CATFISH 1300

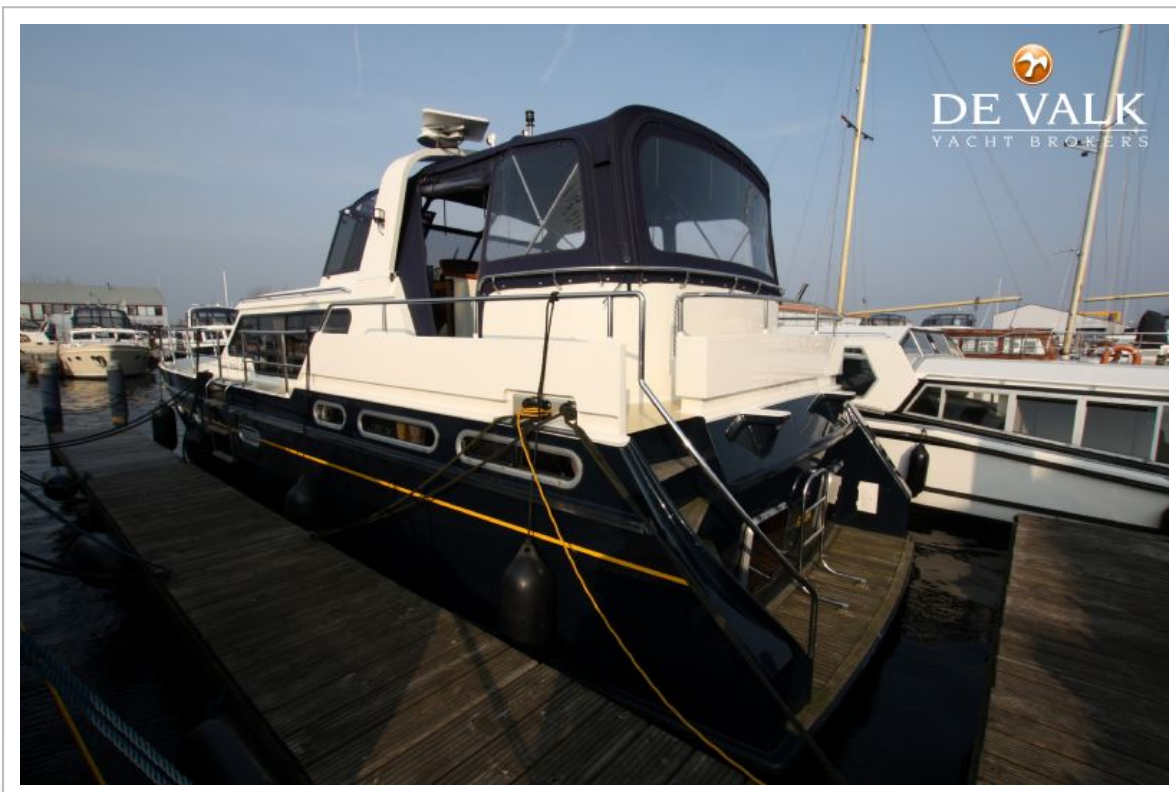




# CATFISH 1300

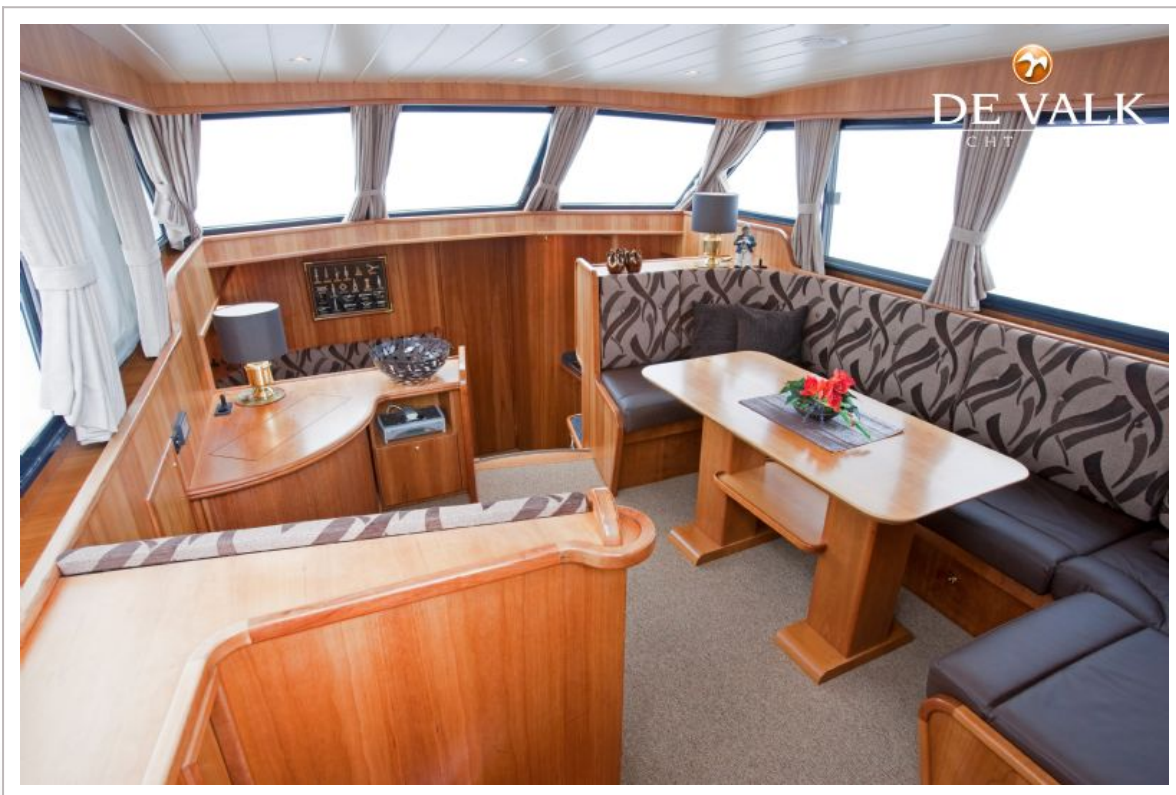


# CATFISH 1300

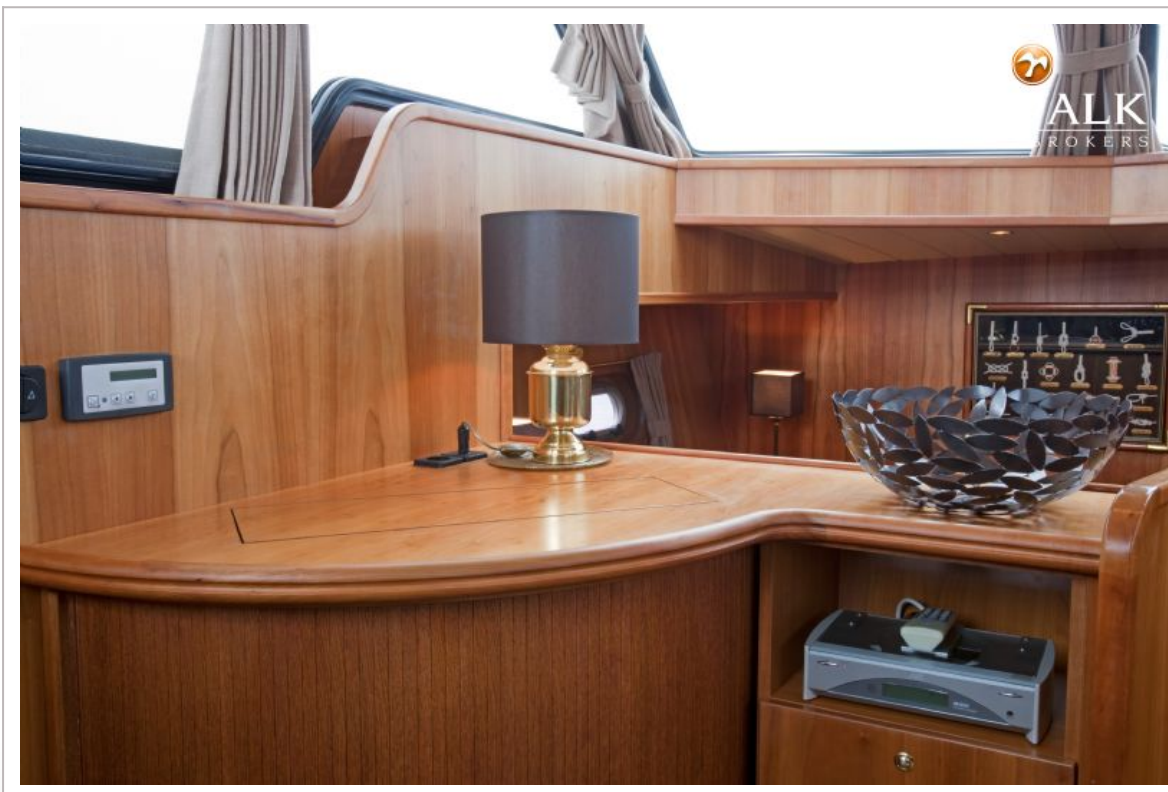




# CATFISH 1300

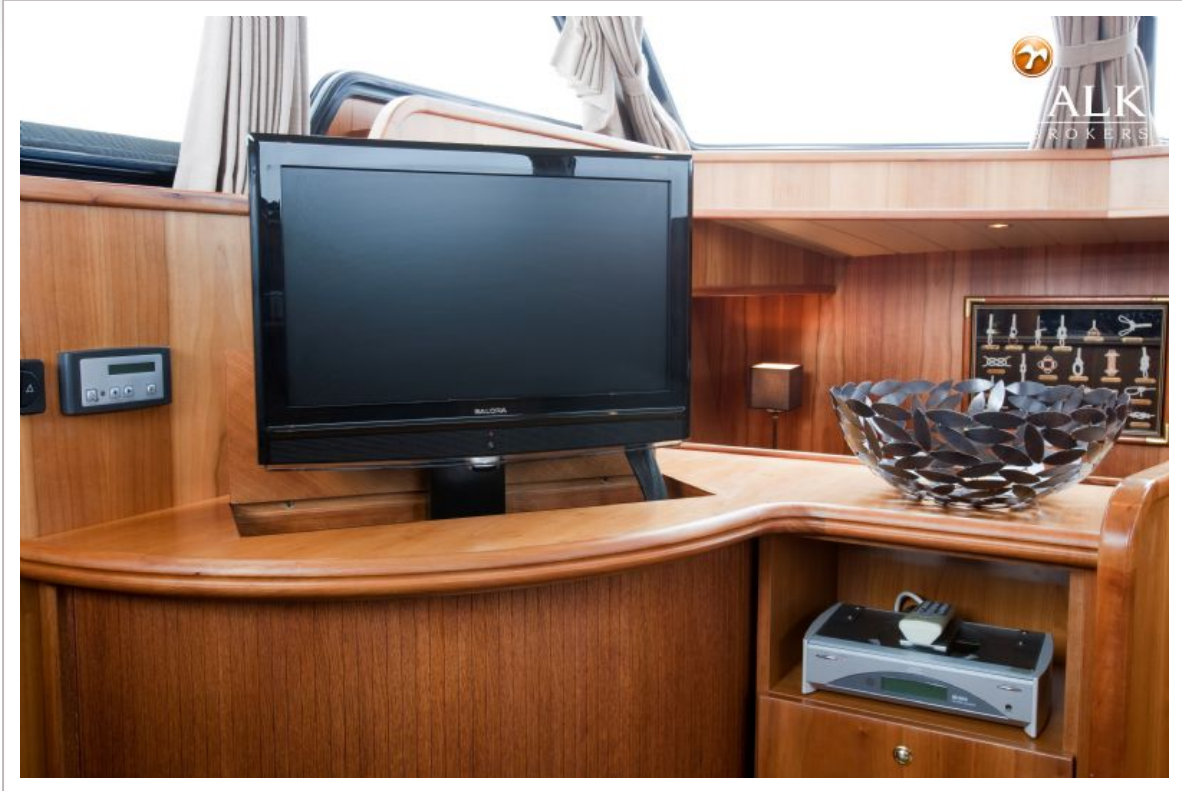


# CATFISH 1300





# CATFISH 1300

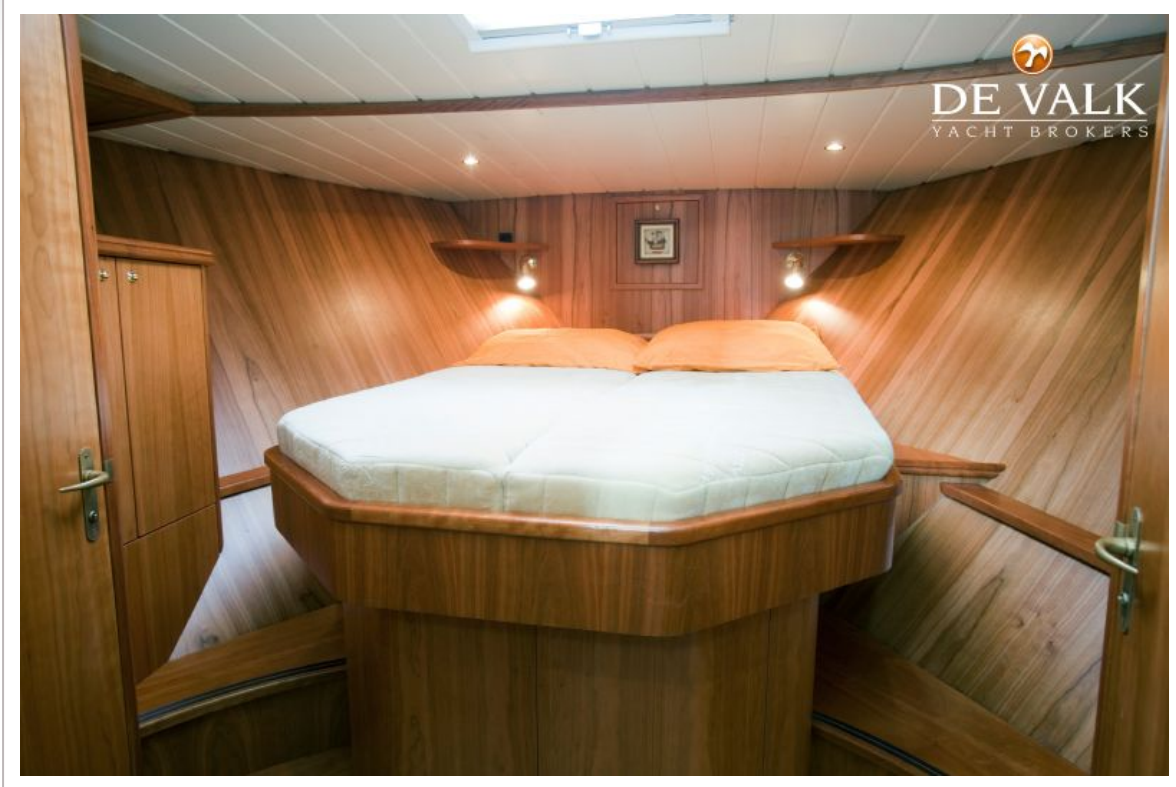


# CATFISH 1300

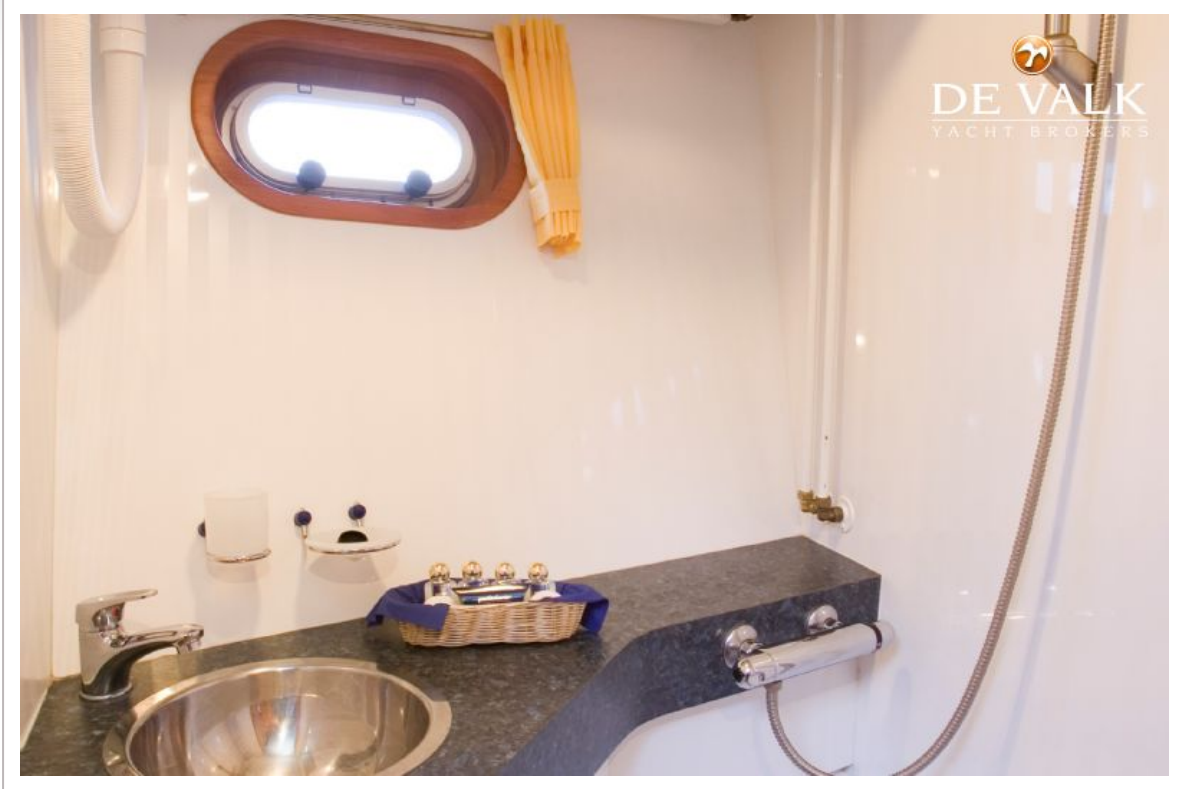




# CATFISH 1300

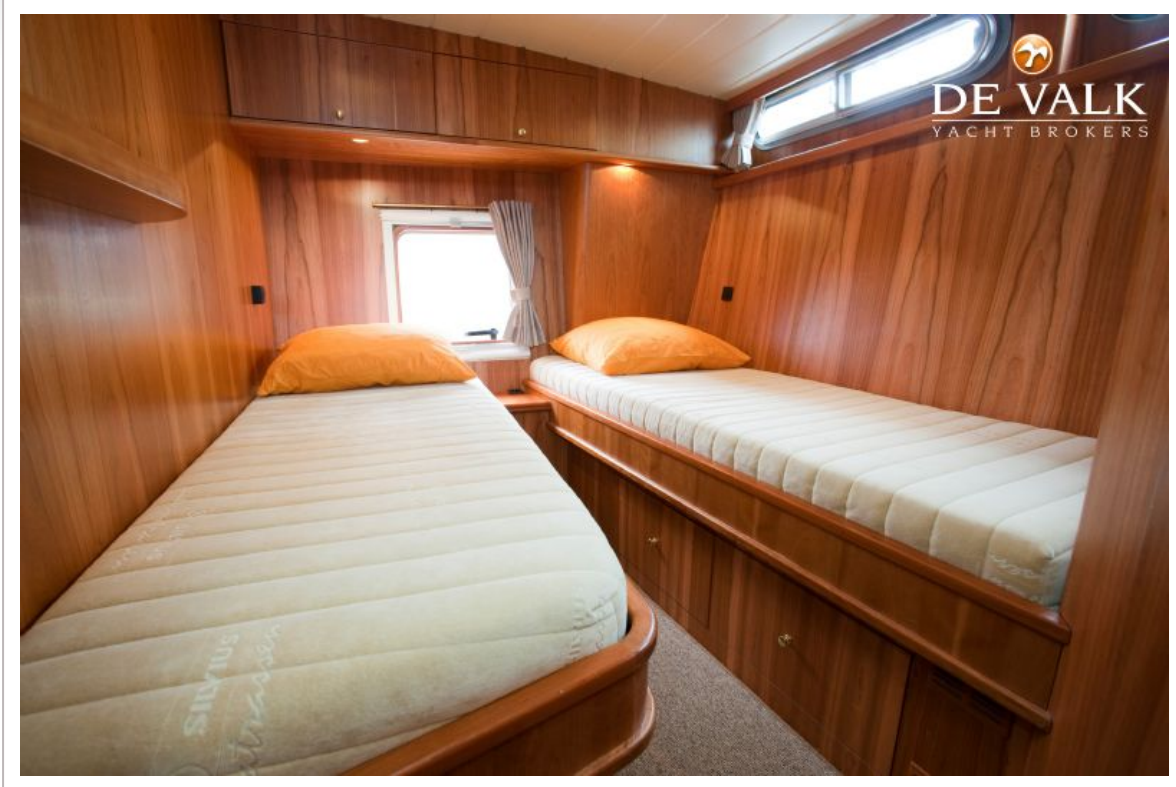


# CATFISH 1300

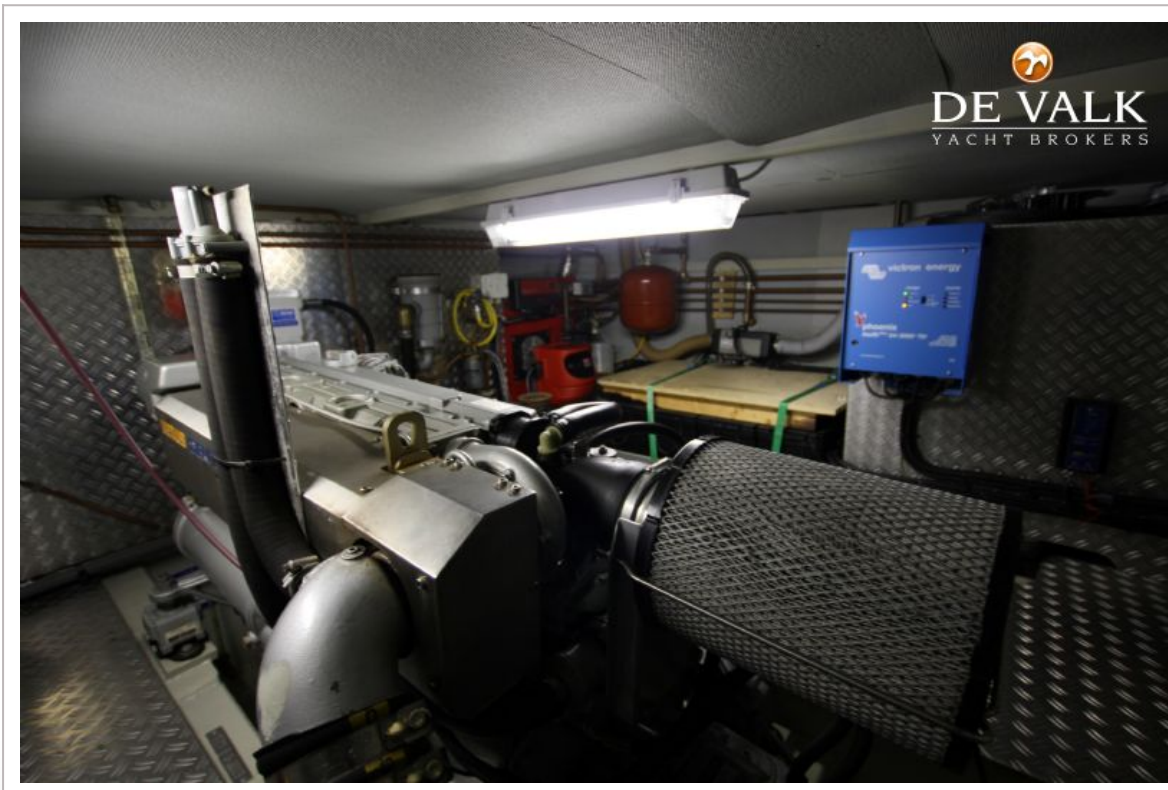
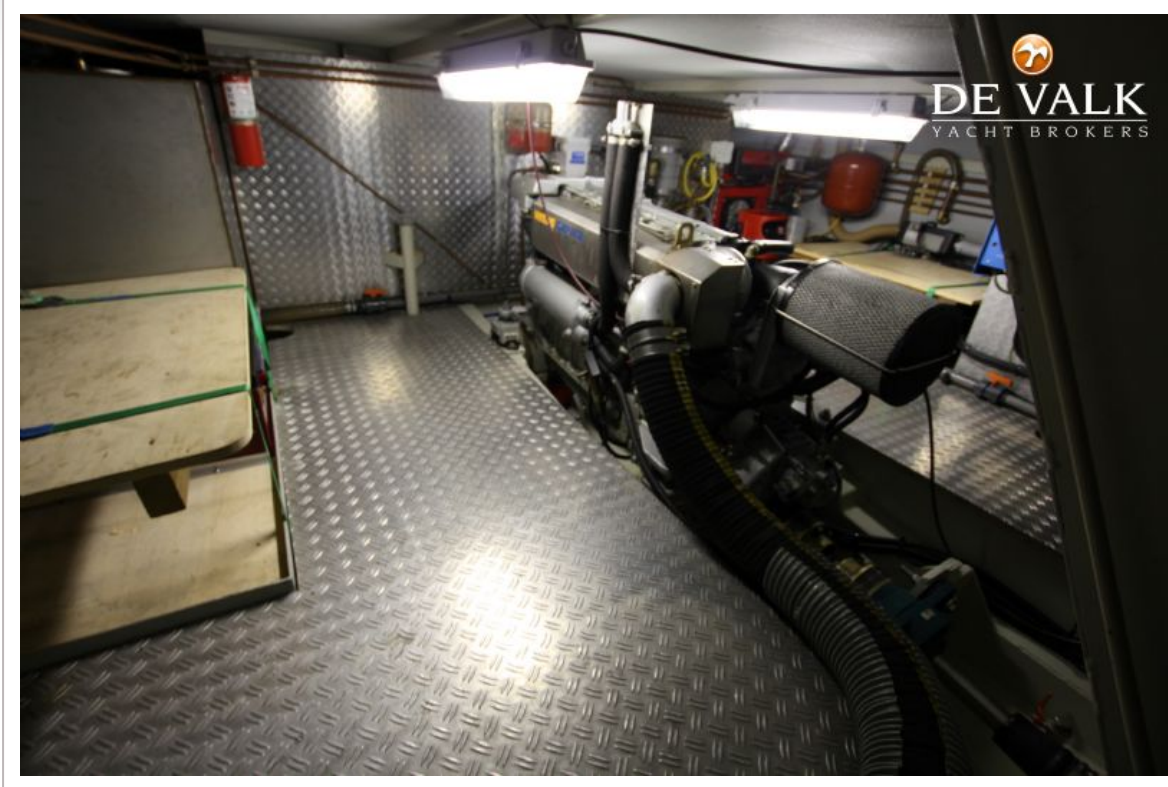




# CATFISH 1300



# CATFISH 1300





# CATFISH 1300

