



KOMPIERT KOTTER 1300

KOMPIER KOTTER 1300

BROKER'S COMMENTS

This elegant, timeless and stylish Kompier Kotter 1300 has everything you could possibly need for extended cruising and a longer stay on board. With her twin Mercedes 130 hp diesels and electric bowthruster, "Drechtstaete" is very easy to handle. Serious comfort levels are found throughout the interior, two cabin layout and one shower/toilet. Because the saloon of this Kompier Kotter 1300 is equipped with a generous aft deck, a great time is assured for everyone on board.

Wiebrig Poiesz-Lageveen

SPECIFICATIONS

| | | | |
|---------------------|--|----------------|-----------------------------|
| Dimensions | 14.00 x 4.20 x 1.25 (m) | Builder | Jachtwerf Kompier |
| Built | 1980 | Cabins | 2 |
| Material | Steel | Berths | 4 |
| Engine(s) | 2 x Mercedes-Benz OM 352(353.961) diesel | Hp/Kw | 2 x 129.00 (hp), 94.82 (kw) |
| Asking price | sold (VAT) | Lying | at sales office |

CONTACT

| | | | |
|---------------------|---|------------------|------------------|
| Sales office | De Valk Sneek | Telephone | +31 515 42 80 30 |
| Address | Zwolsmanweg 7 8606 KC Sneek The Netherlands | E-mail | sneek@devalk.nl |

DISCLAIMER

These particulars are given in good faith as supplied but cannot be guaranteed.



GENERAL

| | |
|-----------------------------------|---------------------|
| Model | KOMPIER KOTTER 1300 |
| Type | motor yacht |
| LOA (m) | 14,00 |
| Beam (m) | 4,20 |
| Draft (m) | 1,25 |
| Air draft min (m) | 2,70 |
| Year built | 1980 |
| Builder | Jachtwerf Kompier |
| Country | The Netherlands |
| Hull material | steel |
| Hull colour | white |
| Hull shape | round-bilged |
| Keel type | tandem keel |
| Superstructure material | steel |
| Rubbing strake | stainless steel |
| Deck material | steel |
| Deck finish | teak Moderate |
| Superstructure deck finish | paint |
| Cockpit deck finish | paint |
| Antifouling (year) | 2015 |
| Window frame | aluminium |
| Window material | glass |
| Portholes | aluminium |
| Insulation | rockwool |
| Mast can be lowered | electric |
| Steadying sail with mast | yes |
| Fuel tank (litre) | yes |
| Freshwater tank (litre) | yes |
| Blackwater tank (litre) | yes |
| Inside helm position | yes |



| | |
|------------------------|-----------|
| Outside helm position | hydraulic |
| More info on paintwork | 2015 |

ACCOMMODATION

| | |
|--------------------------|-----------------------------------|
| Cabins | 2 |
| Berths | 4 |
| Interior | teak |
| Floor | carpet Teak & |
| Aft deck | yes |
| Saloon | yes |
| Headroom saloon (m) | 2.00 m. |
| Sliding roof | manual |
| Heating | diesel ducted hot air Eberspacher |
| Aft Cabin | yes |
| Opening door to aft deck | yes |
| Galley | yes |
| Countertop | plastic |
| Sink | stainless steel |
| Cooker | electric |
| Microwave/oven combi | Samsung |
| Fridge | Ariston 110 l. |
| Freezer | yes |
| Hot water system | 220V/engine/heating |
| Water pressure system | electrical |
| Owners cabin | double bed (+1) |
| Wardrobe | hanging and drawers |
| Toilet | en suite |
| Toilet system | electric |
| Wash basin | at the toilet |
| Shower | en suite |
| Guest cabin 1 | v-bed |



| | |
|-----------------|-------------------|
| Wardrobe | hanging |
| Washing machine | Candy Aquamatic 3 |

MACHINERY

| | |
|--------------------------|------------------------------|
| No of engines | 2 |
| Make | Mercedes-Benz |
| Type | OM 352(353.961) |
| HP | 129,00 |
| kW | 94,82 |
| Fuel | diesel |
| Year installed | 1980 |
| Engine hours | 3336/3334 |
| Engine cooling system | freshwater heat exchanger |
| Drive | shaft |
| Engine controls | bowden cable |
| Gearbox | hydraulic |
| Bowthruster | electric |
| Propeller type | fixed |
| Propeller shaft material | stainless steel |
| Shaft lubrication | grease |
| Electric bilge pump | yes |
| Electrical installation | 24/220 Volt |
| Generator | wet exhaust Mastervolt 6 kVa |
| Running hours generator | 1105 |
| Start battery | yes |
| Service battery | yes |
| Generator battery | yes |
| Battery charger | Mastervolt 24/100 |
| Inverter | Mastervolt 24/1500 |
| Shorepower | with cable |



NAVIGATION

| | |
|-------------------|---------------------|
| Depth sounder/log | Simrad IS 15 |
| Windset | Simrad IS 15 |
| VHF | Shipmate RS 8110 |
| Autopilot | Simrad AP22 |
| Plotter | Simrad CP44 |
| Searchlight | with remote control |

EQUIPMENT

| | |
|----------------------------|------------------------|
| Fixed windscreen | yes |
| Sprayhood | yes |
| Cockpit table | yes |
| Boarding ladder | stainless steel |
| Anchor | Pool |
| Anchor chain | yes |
| Windlass | electrical |
| Deck wash | yes |
| Davits | stainless steel |
| Davits controls | manual |
| Sea railing | stainless steel Teak & |
| Railing side opening gates | 3x |
| Wiper | 3x |
| Horn | electric |
| Fenders | yes |
| Mooring lines | yes |
| TV | Akai |
| Radio-cd player | Blaupunkt |
| Speakers in salon | yes |
| Clock - barometer | yes |
| Fire extinguisher | yes |



KOMPIER KOTTER 1300



KOMPIER KOTTER 1300



KOMPIER KOTTER 1300



KOMPIER KOTTER 1300



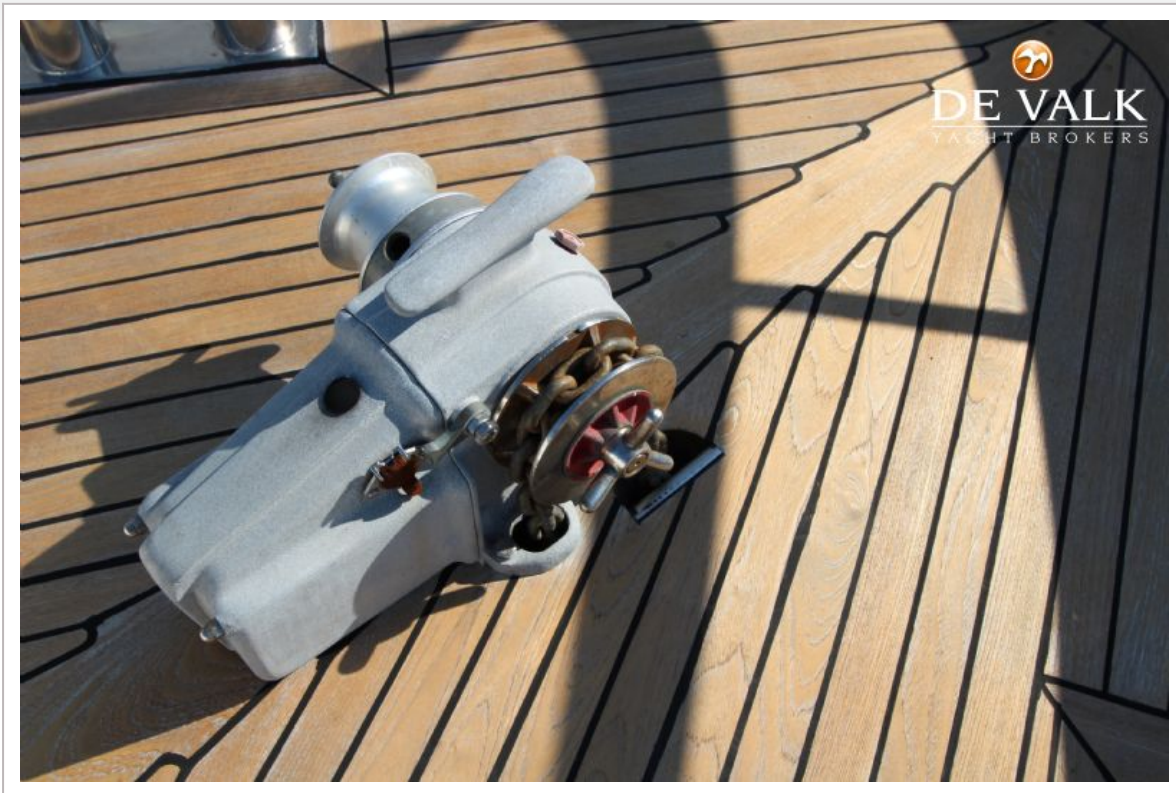
KOMPIER KOTTER 1300



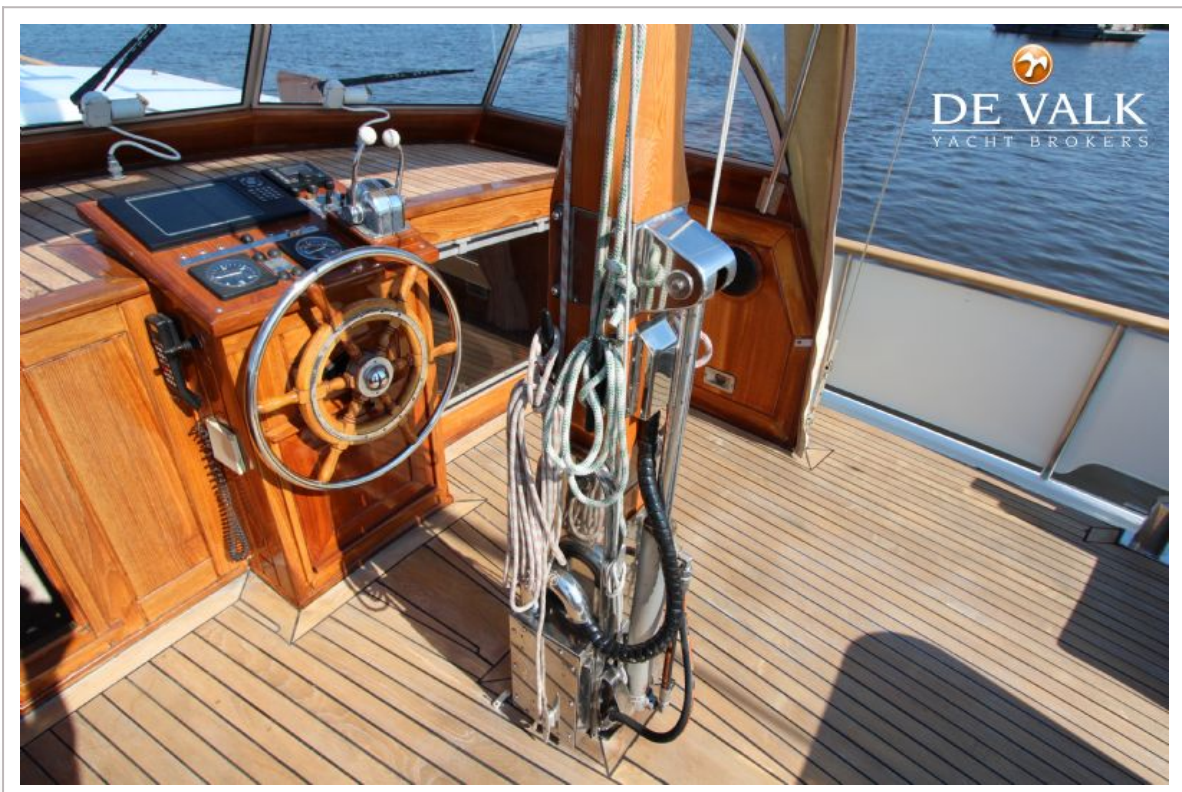
KOMPIER KOTTER 1300



KOMPIER KOTTER 1300



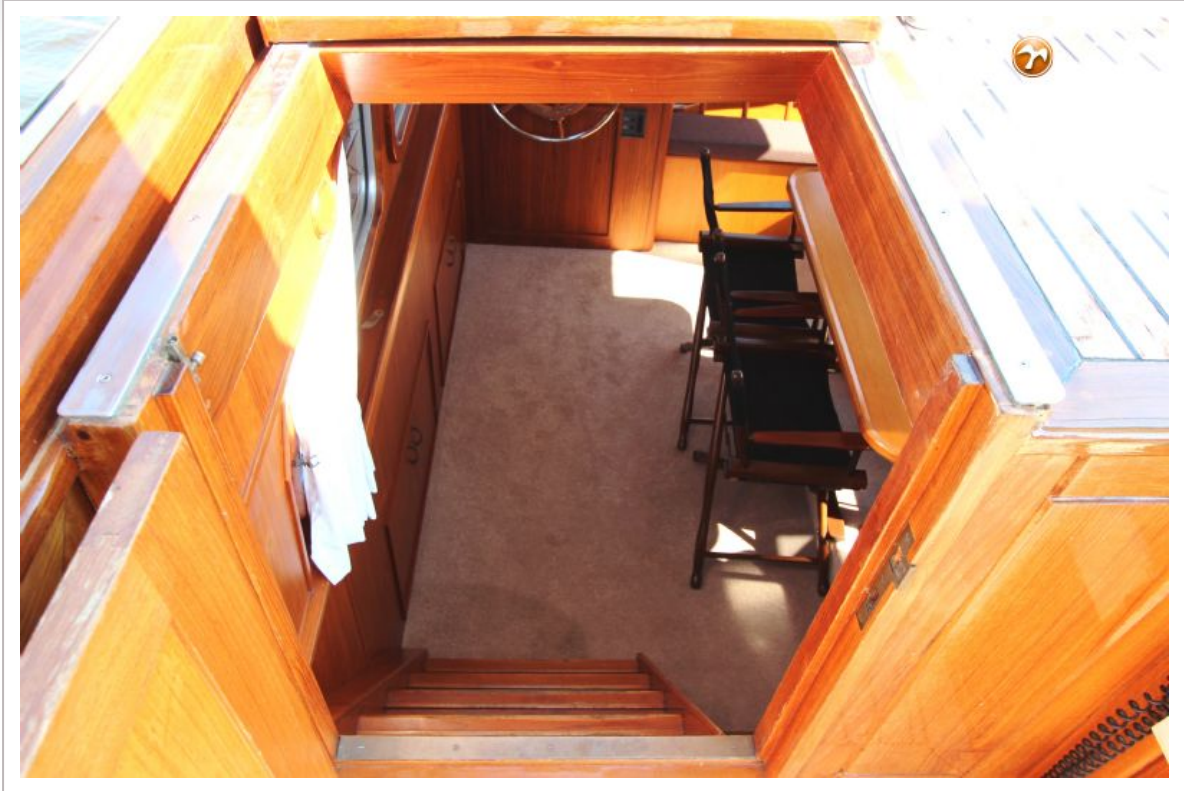
KOMPIER KOTTER 1300



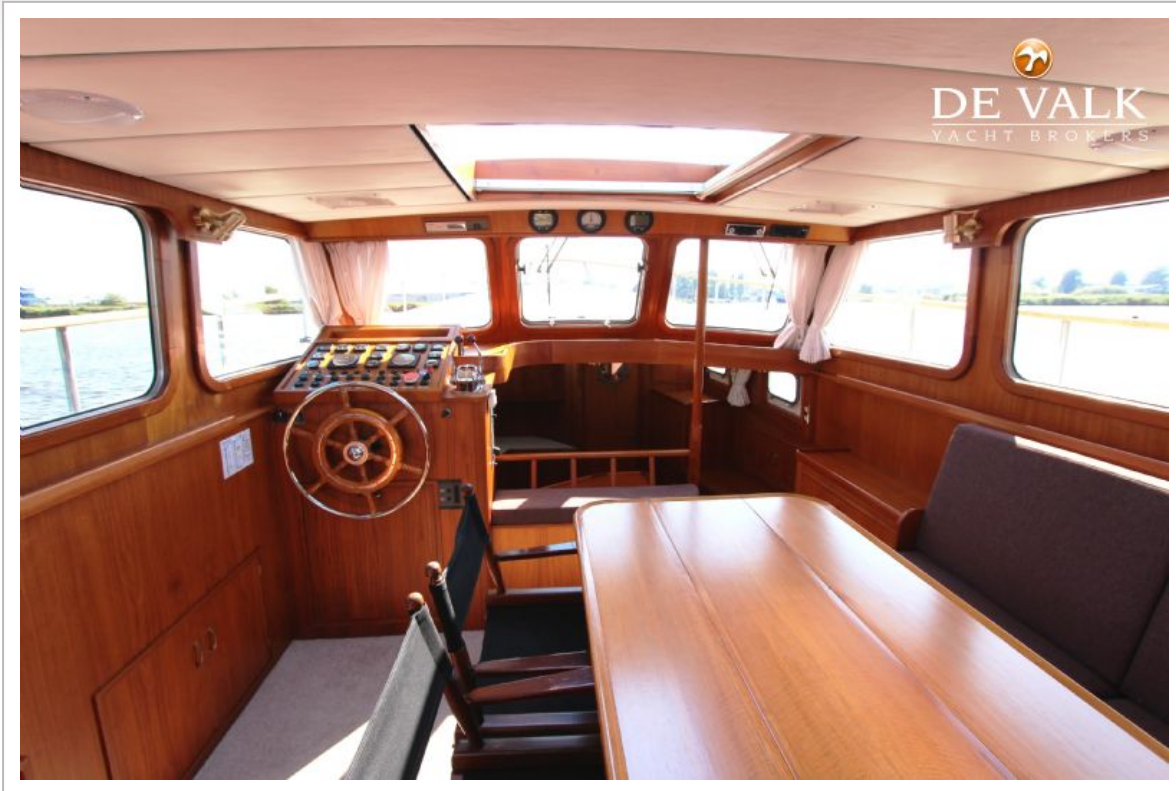
KOMPIER KOTTER 1300



KOMPIER KOTTER 1300



KOMPIER KOTTER 1300



KOMPIER KOTTER 1300



KOMPIER KOTTER 1300



KOMPIER KOTTER 1300



KOMPIER KOTTER 1300



KOMPIER KOTTER 1300



KOMPIER KOTTER 1300

