



LINSSEN GRAND STURDY 470

LINSSEN GRAND STURDY 470

BROKER'S COMMENTS

Linssen Grand Sturdy 470 "Hakamede" build at Linssen Yachts in 2003. This Linssen is very well equipped and suitable for longer stay onboard. Double glazed windows, kabola central heating, 65L boiler and seperate airco control in every room. Two cabins with private bathroom and two extra berths on the dinette. Two Volvo Penta diesel engines, bow- and sternthruster, Onan generator and a Victron charger/inverter. "Hecamede" is well maintained and worth a trip to our sales office.

Arne Doodeman

SPECIFICATIONS

Dimensions	14.30 x 4.45 x 1.36 (m)	Builder	Linssen Yachts
Built	2003	Cabins	2
Material	Steel	Berths	4
Engine(s)	2 x Volvo Penta TAMD41H-B diesel	Hp/Kw	2 x 145.00 (hp), 106.58 (kw)
Asking price	sold (VAT)	Lying	at sales office

CONTACT

Sales office	De Valk Sneek	Telephone	+31 515 42 80 30
Address	Zwolsmanweg 7 8606 KC Sneek The Netherlands	E-mail	sneek@devalk.nl

DISCLAIMER

These particulars are given in good faith as supplied but cannot be guaranteed.



LINSSEN GRAND STURDY 470

GENERAL

Model	LINSSEN GRAND STURDY 470
Type	motor yacht
LOA (m)	14,30
Beam (m)	4,45
Draft (m)	1,36
Air draft (m)	3,60
Headroom (m)	2,00
Year built	2003
Builder	Linssen Yachts
Country	The Netherlands
Designer	Anne Elsinga
Displacement (t)	27
CE norm	B
Hull material	steel
Hull colour	blue
Hull shape	multi hard chine
Keel type	long keel
Superstructure material	steel
Rubbing strake	fender rope
Deck material	steel
Deck finish	teak
Antifouling (year)	2017
Window frame	aluminium Marex
Window material	double glazing
Deckhatch	4x Gebo
Portholes	yes
Insulation	foam
Mast can be lowered	electric
Fuel tank (litre)	steel 1760
Level indicator (fuel tank)	VDO



LINSSEN GRAND STURDY 470

Freshwater tank (litre)	polyethylene 660
Level indicator (freshwater)	VDO
Blackwater tank (litre)	polyethylene 220
Level indicator (blackwater)	Turotest
Blackwater tank extraction	deck extraction + pump
Wheel steering	hydraulic
Inside helm position	yes
Outside helm position	hydraulic
Extra info	All lights are LED including navigation lights

ACCOMMODATION

Cabins	2
Berths	4
Interior	cherry
Floor	teak and holly
Aft deck	yes
Saloon	yes
Heating	central heating Kabola
Air-conditioning	single cycle airco Cruisair 3 way air-conditioning
Aft Cabin	yes
Dinette	yes
Dinette to convert into berth	yes
Opening door to aft deck	yes
Galley	yes
Countertop	Duropal
Sink	stainless steel Double sink
Cooker	ceramic Siemens 4 burner
Extractor	yes
Microwave/oven combi	Siemens
Fridge	2 x
Freezer	In fridge



LINSSEN GRAND STURDY 470

Hot water system	220V + engine 65L
Water pressure system	yes
Dishwasher	Eumenia
Owners cabin	French bed
Wardrobe	hanging and shelves
Bathroom	en suite
Toilet	yes
Toilet system	electric
Wash basin	yes
Shower	yes
Guest cabin 1	v-bed
Wardrobe	hanging and shelves
Toilet	en suite
Toilet system	electric
Wash basin	yes
Shower	en suite
Washing machine/dryer combi	Eumenia Sparmeister 802

MACHINERY

No of engines	2
Make	Volvo Penta
Type	TAMD41H-B
HP	145,00
kW	106,58
Fuel	diesel
Year installed	2003
Maximum speed (kn)	10
Cruising speed (kn)	8-9
Consumption (l/hr)	6
Engine hours	1750
Engine cooling system	freshwater heat exchanger



LINSSEN GRAND STURDY 470

Drive	shaft
Engine controls	bowden cable Morse
Gearbox	hydraulic
Bowthruster	electric Vetus 11 HP
Sternthruster	electric Vetus 11 HP
Thrust bearing	yes
Propeller type	fixed
Propeller blades	5 bladed
Propeller shaft material	stainless steel
Shaft lubrication	water
Electric bilge pump	yes
Generator	Onan 9Kw
Running hours generator	318 hr (8-06-2017)
Service battery	New 2017
Battery monitor	Victron BMV-501, Victron control
Battery charger/inverter	Victron Quatro, new 2017
Shorepower	with cable

NAVIGATION

Electric compass	Raymarine ST60
Depth sounder/log	Raymarine ST60 Tridata
Windset	Raymarine ST60
VHF	Raymarine Ray 260E (2015)
Autopilot	Raymarine ST6001+
Rudder angle indicator	In the autopilot
Radar	Raymarine RD418HD 4kw (2015)
Plotter/GPS	Raymarine MFD A-serie 9' (2015)
Wifi antenna	4F antenna on mast
Navigation lights	yes

EQUIPMENT



LINSSEN GRAND STURDY 470

Sprayhood	yes
Bimini	yes
Cockpit cushions	yes
Cockpit table	yes
Cockpit chairs	yes
Bathing platform	yes
Boarding ladder	yes
Gangway	Opacmare
Deck shower	yes
Anchor	yes
Anchor chain	yes
Windlass	electrical Lewmar
Deck wash	yes
Sea railing	stainless steel
Grab rail (superstructure)	stainless steel
Railing side opening gates	3 x
Life raft	container Plastimo
Wiper	yes
Horn	yes
Fenders	yes
Mooring lines	yes
TV	Toshiba
TV receiver	yes
Radio-cd player	JVC
Fire extinguisher	yes
Extinguisher in engine room	yes



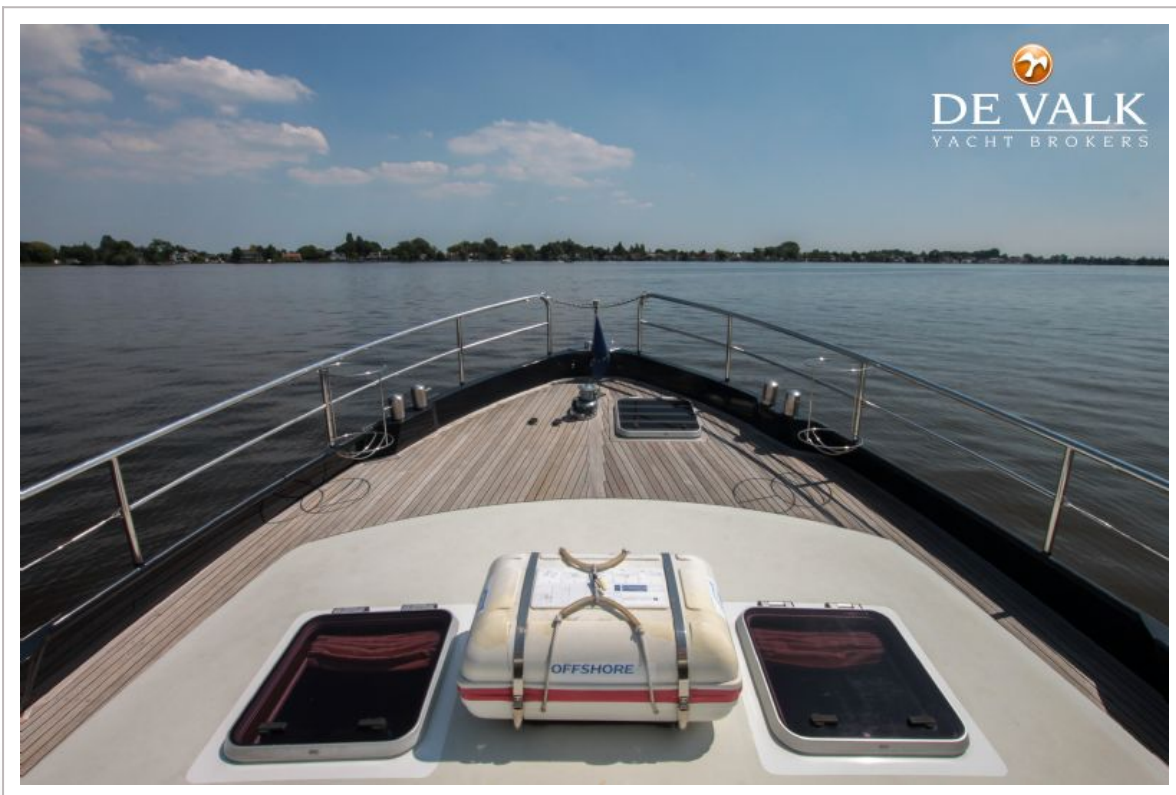
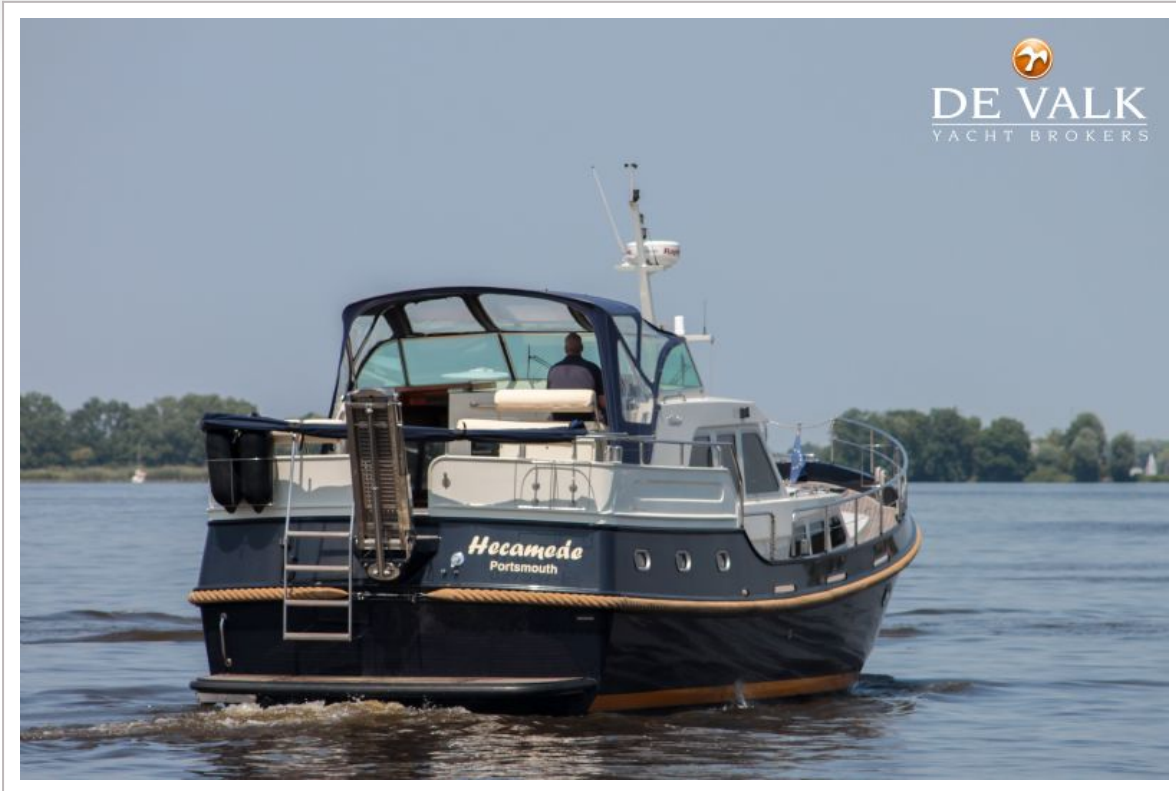
LINSSEN GRAND STURDY 470



LINSSEN GRAND STURDY 470



LINSSEN GRAND STURDY 470



LINSSEN GRAND STURDY 470



LINSSEN GRAND STURDY 470



LINSSEN GRAND STURDY 470



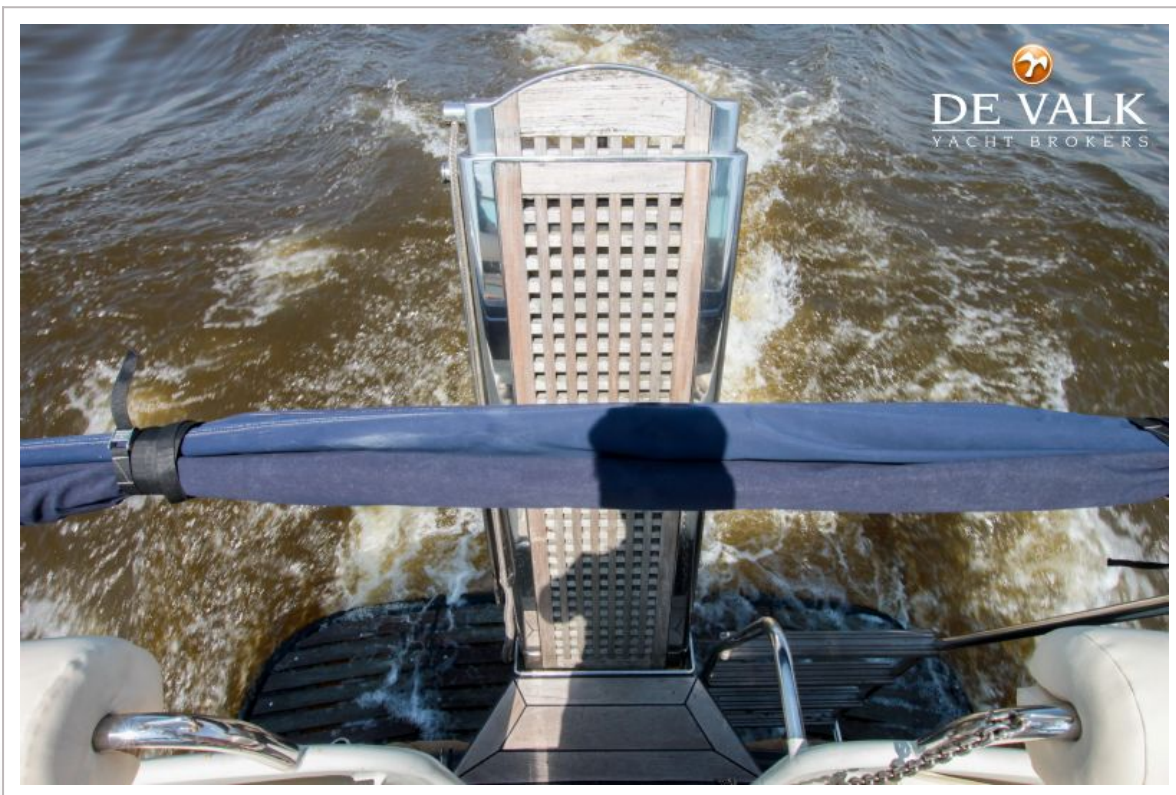
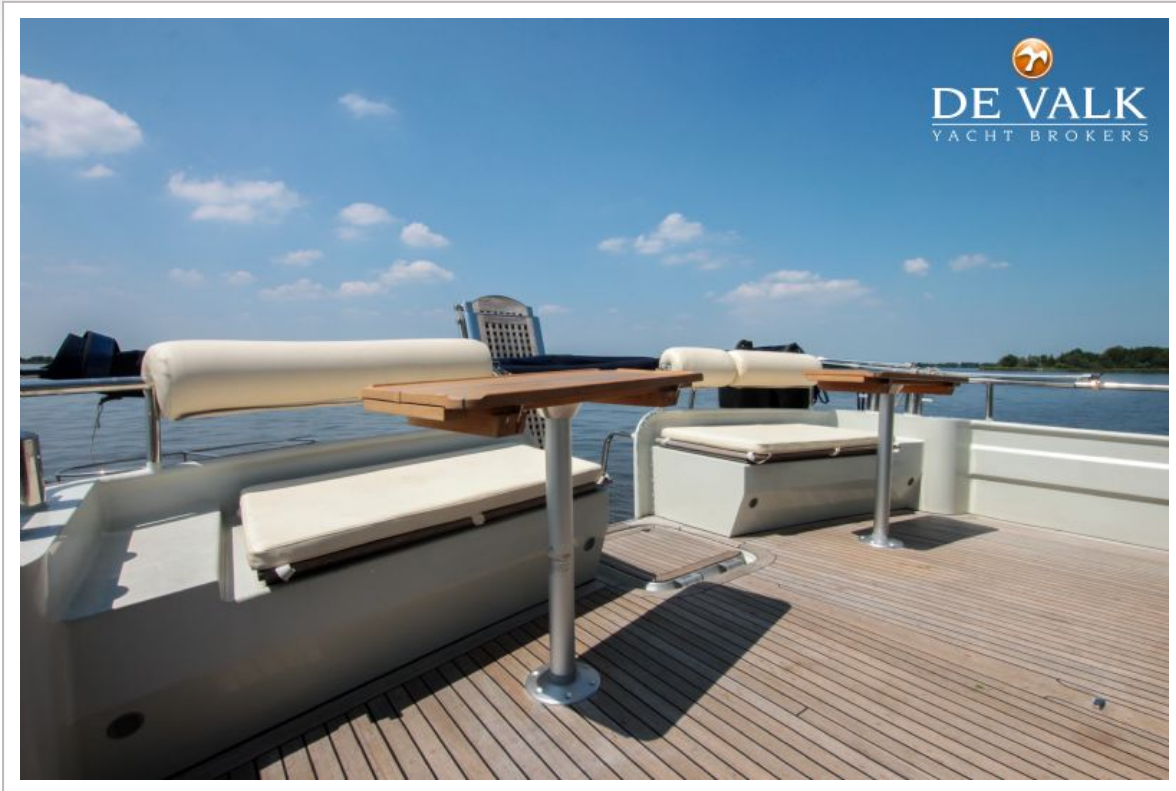
LINSSEN GRAND STURDY 470



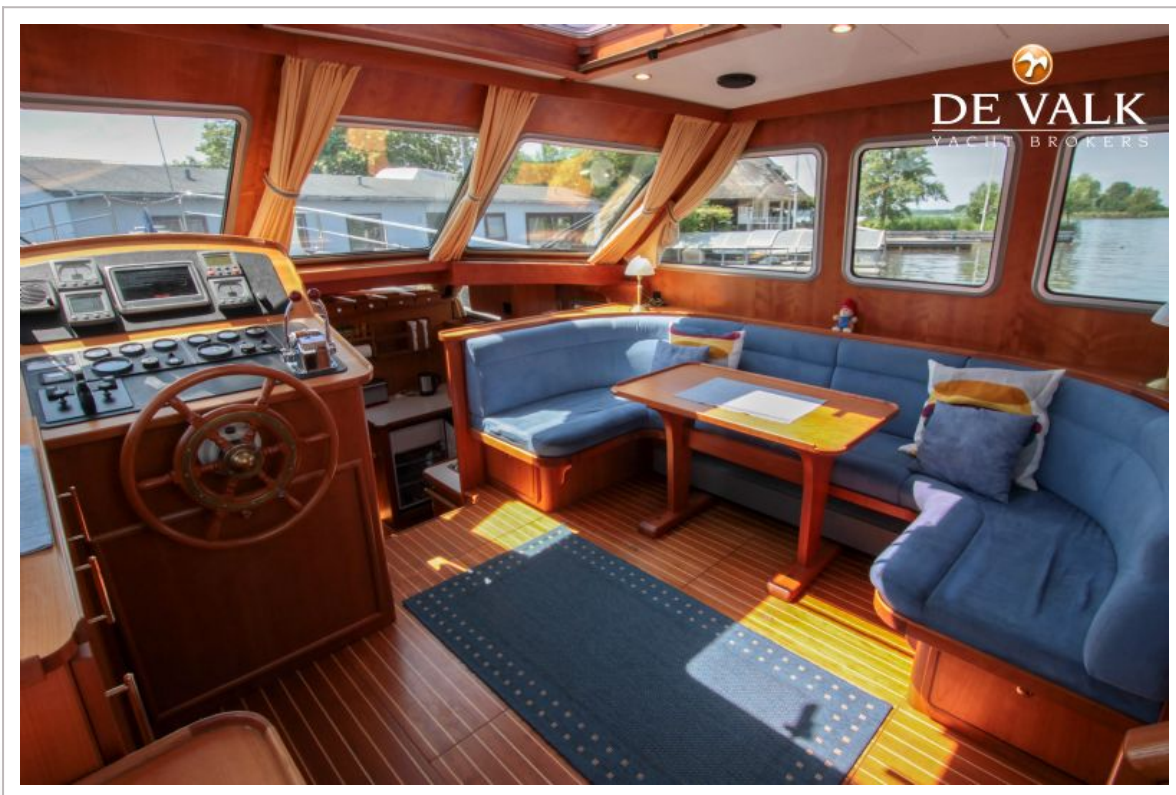
LINSSEN GRAND STURDY 470



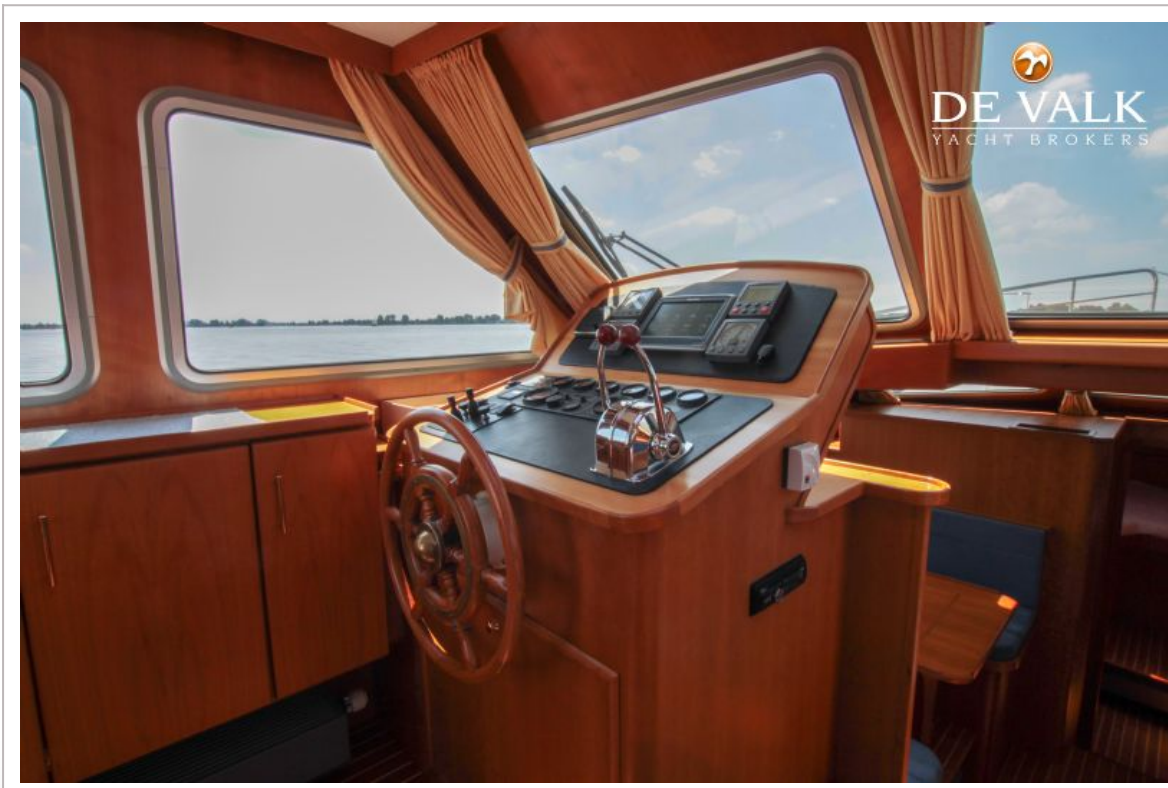
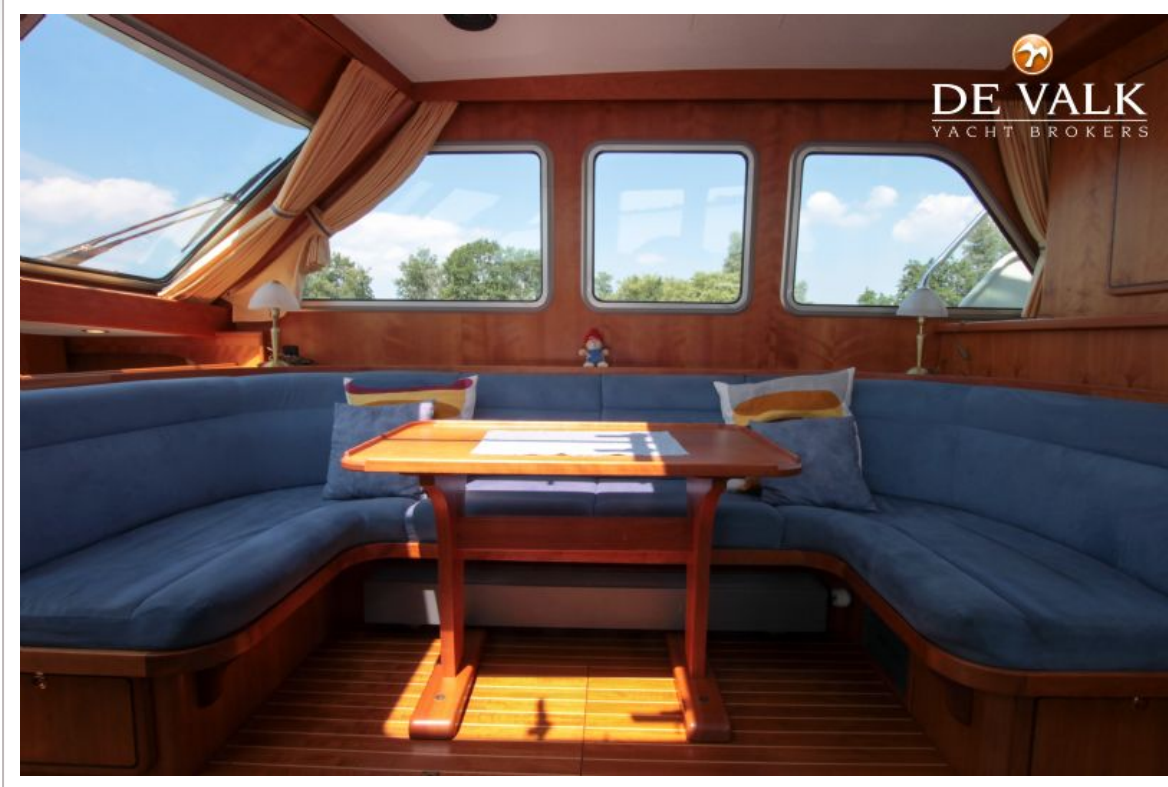
LINSSEN GRAND STURDY 470



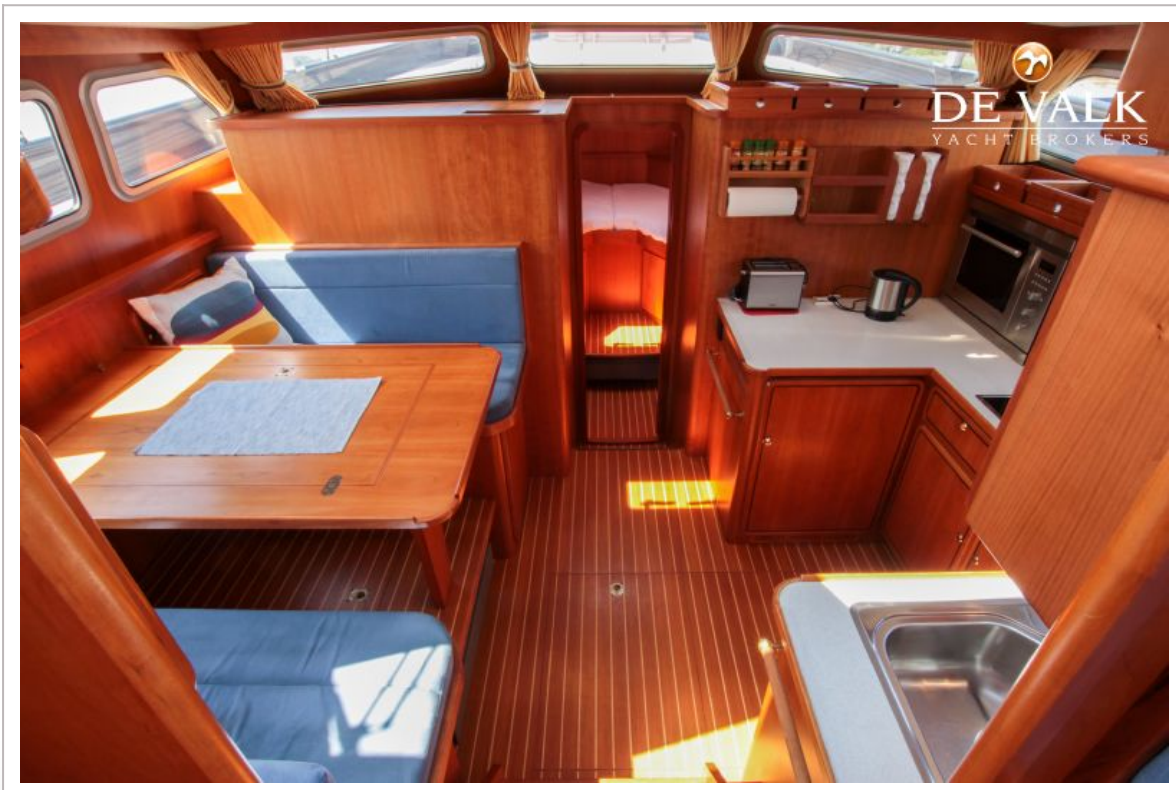
LINSSEN GRAND STURDY 470



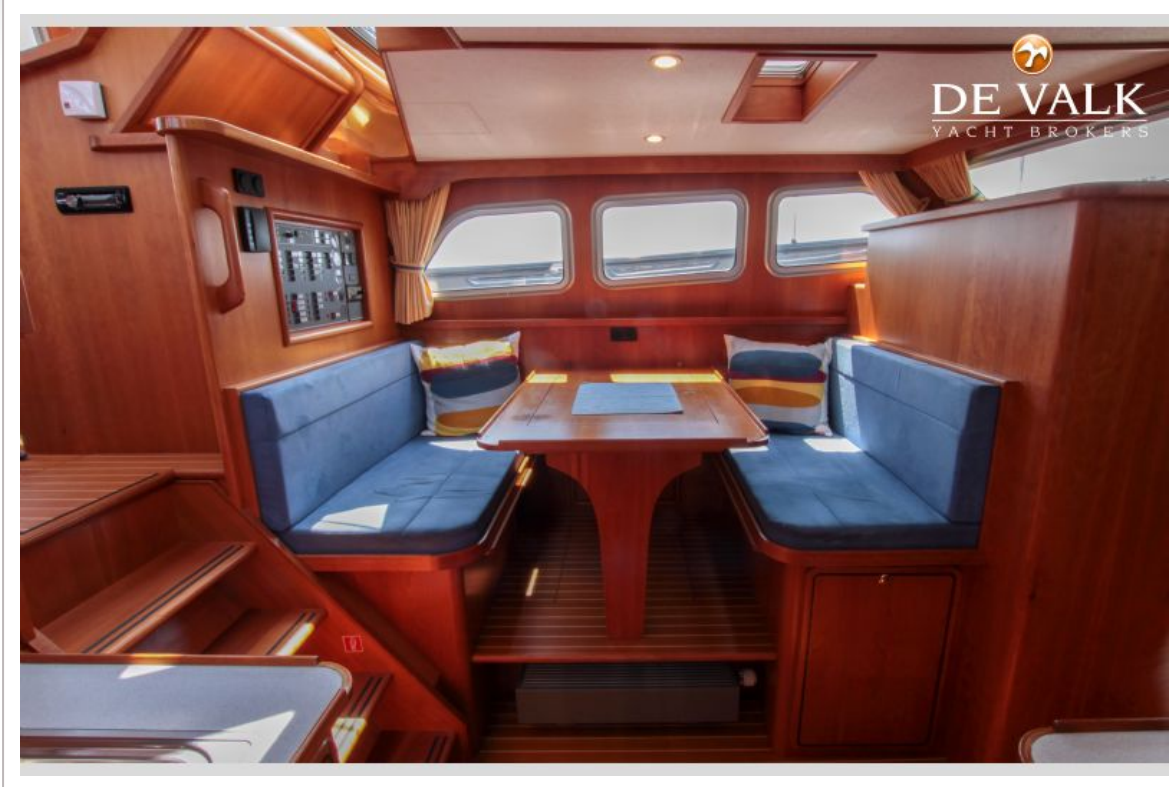
LINSSEN GRAND STURDY 470



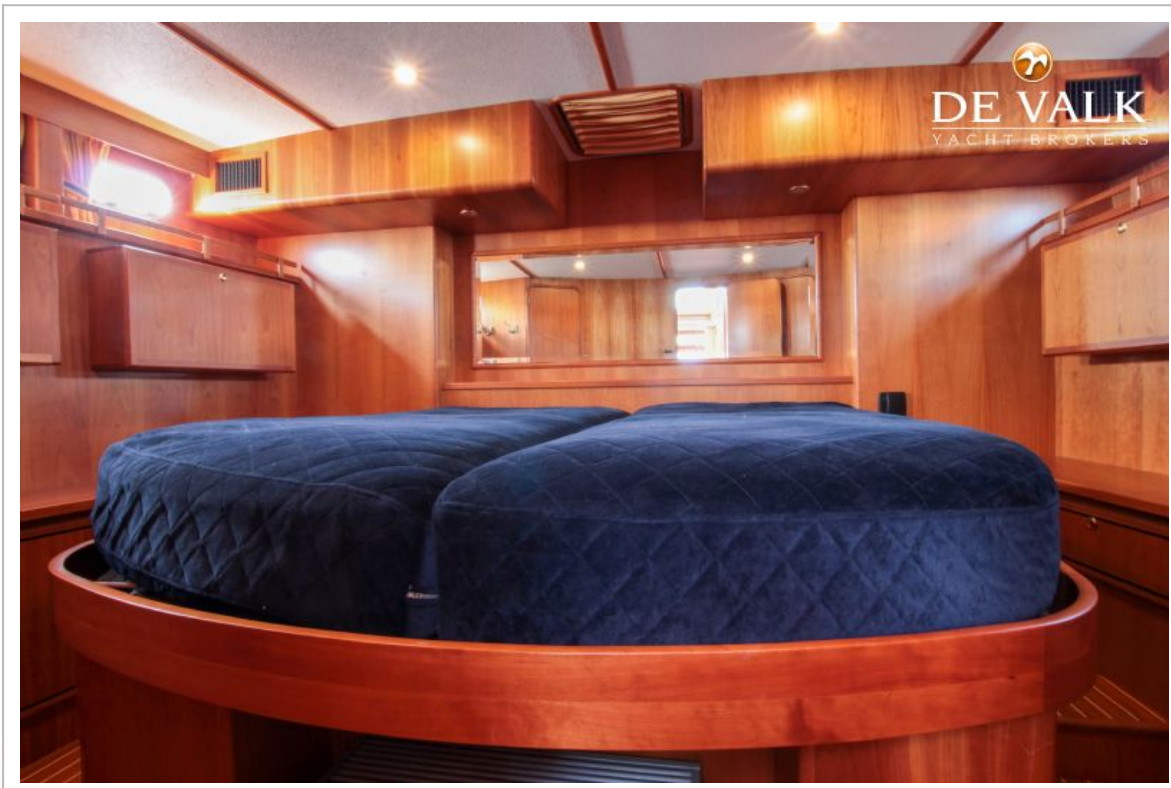
LINSSEN GRAND STURDY 470



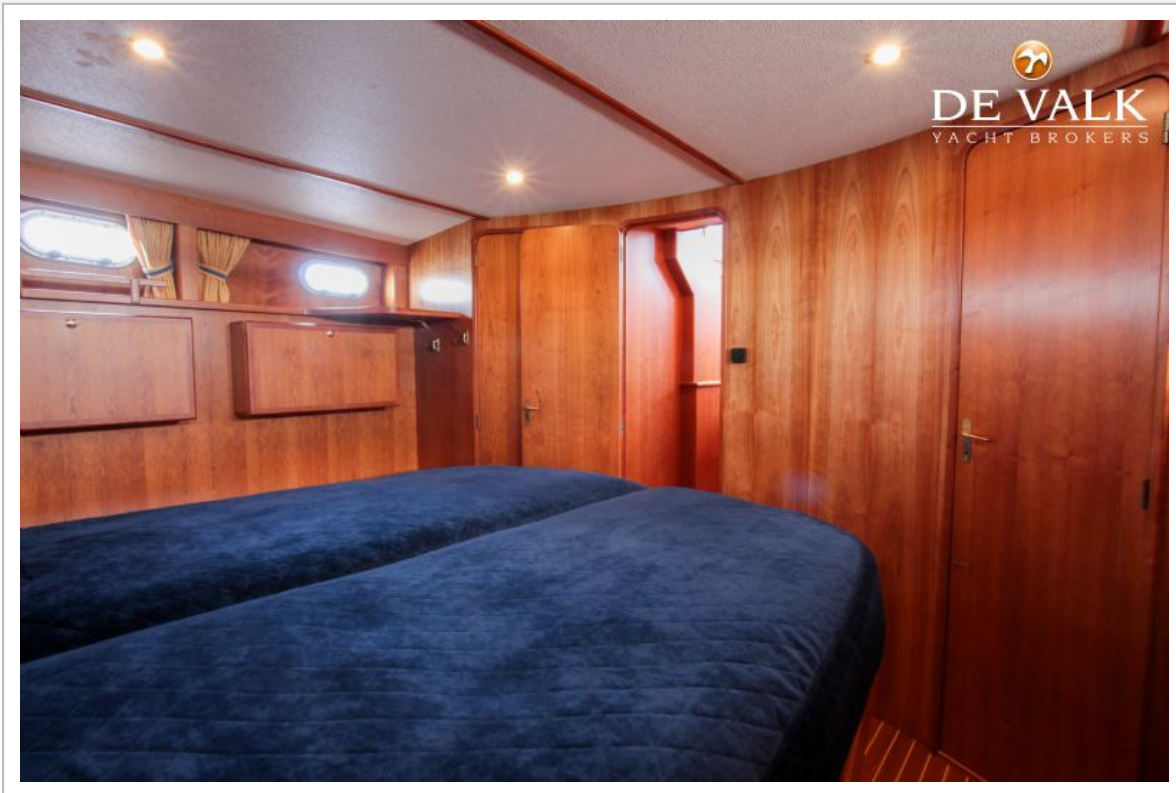
LINSSEN GRAND STURDY 470



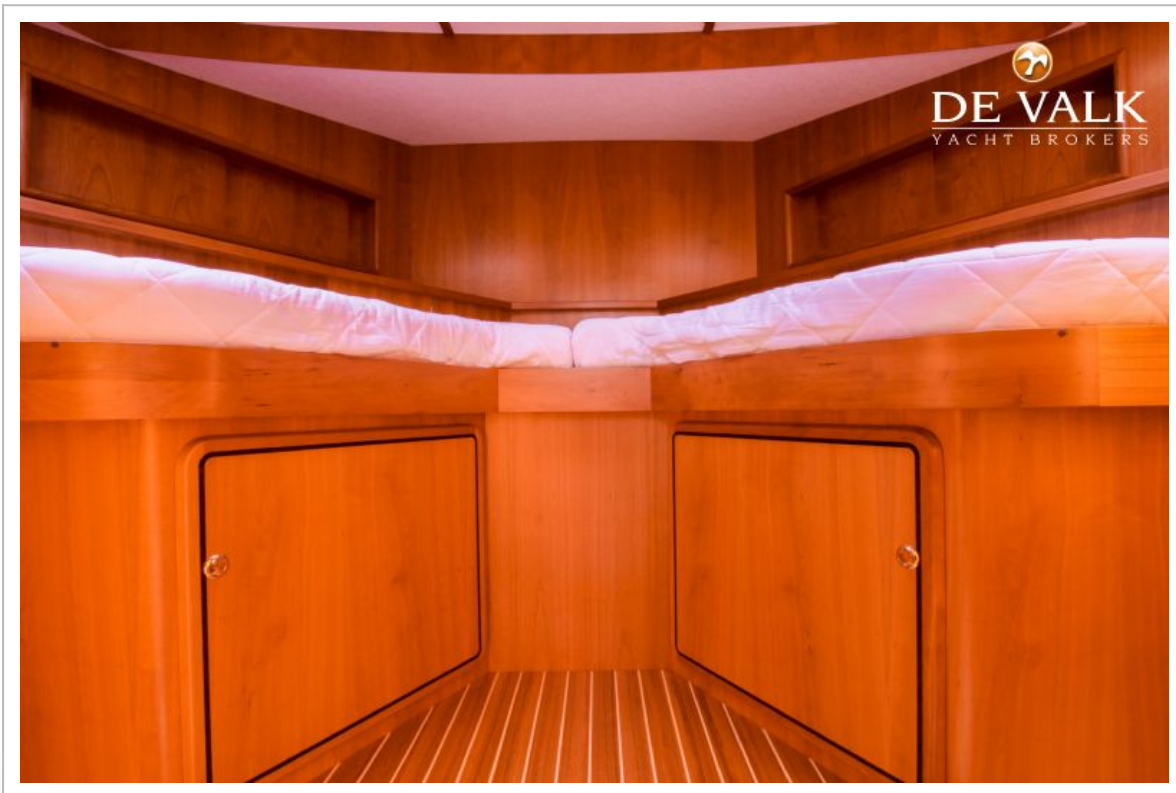
LINSSEN GRAND STURDY 470



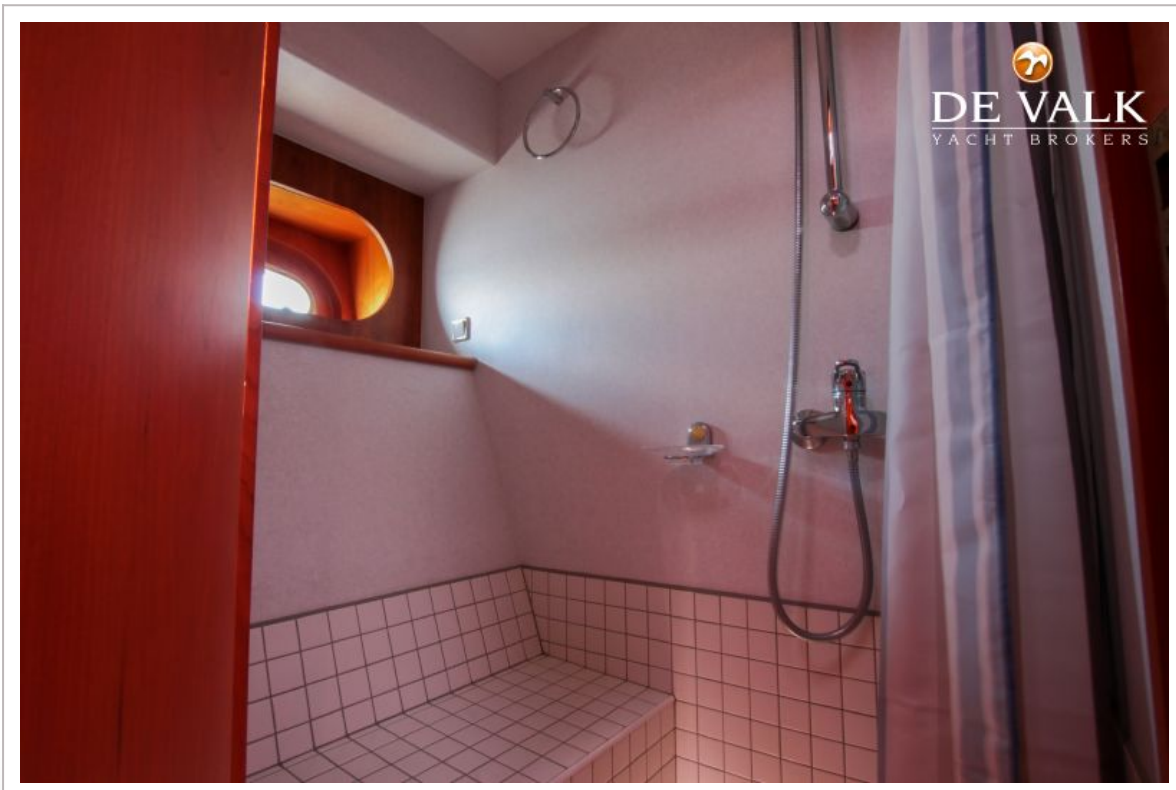
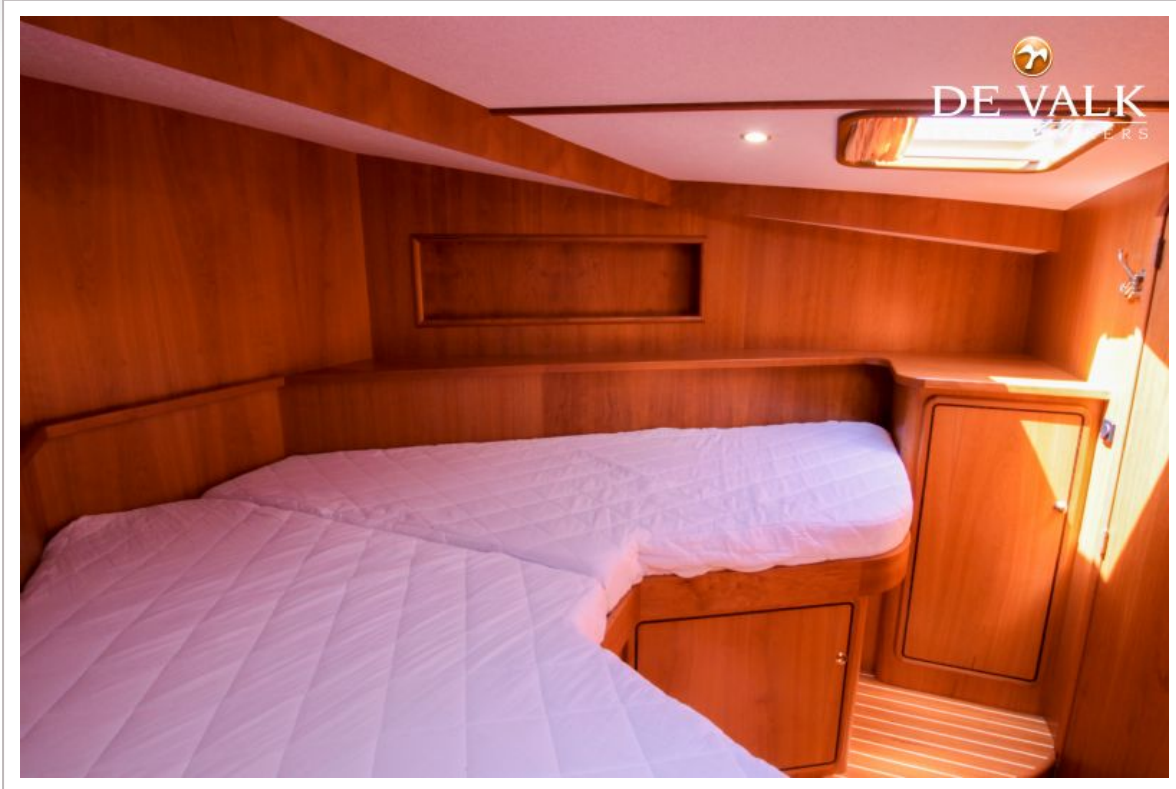
LINSSEN GRAND STURDY 470



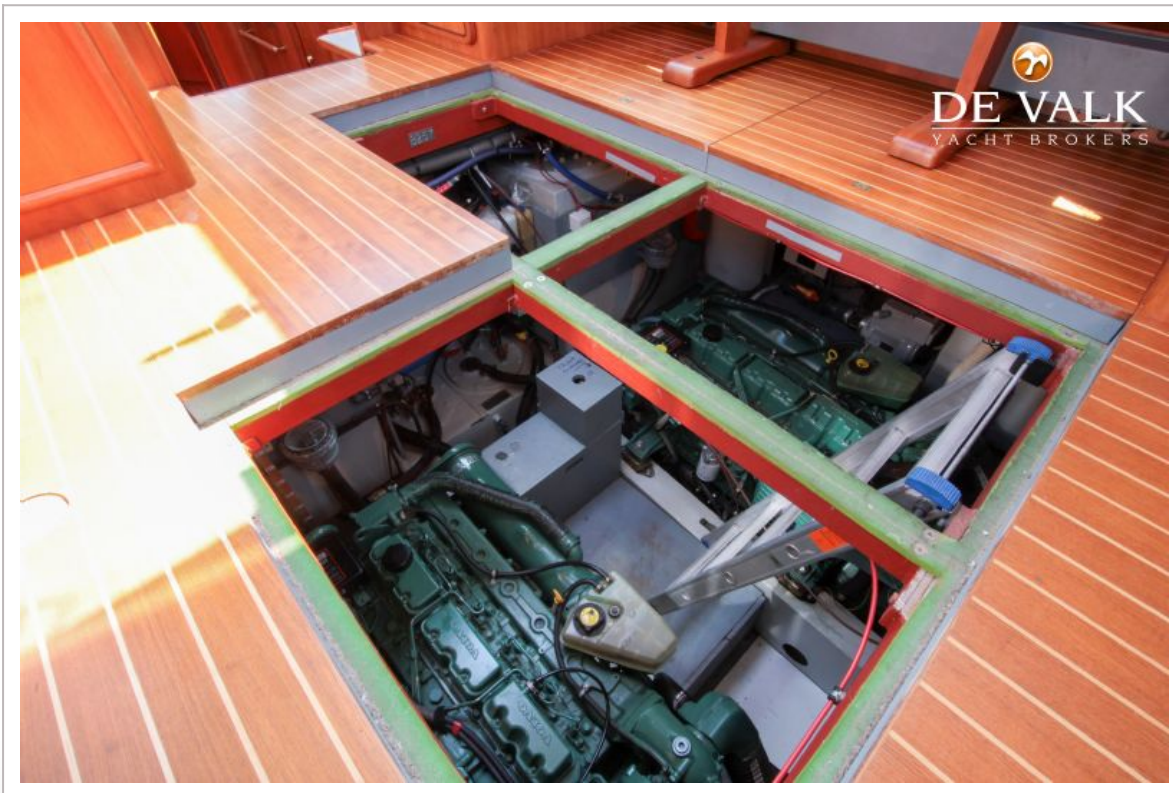
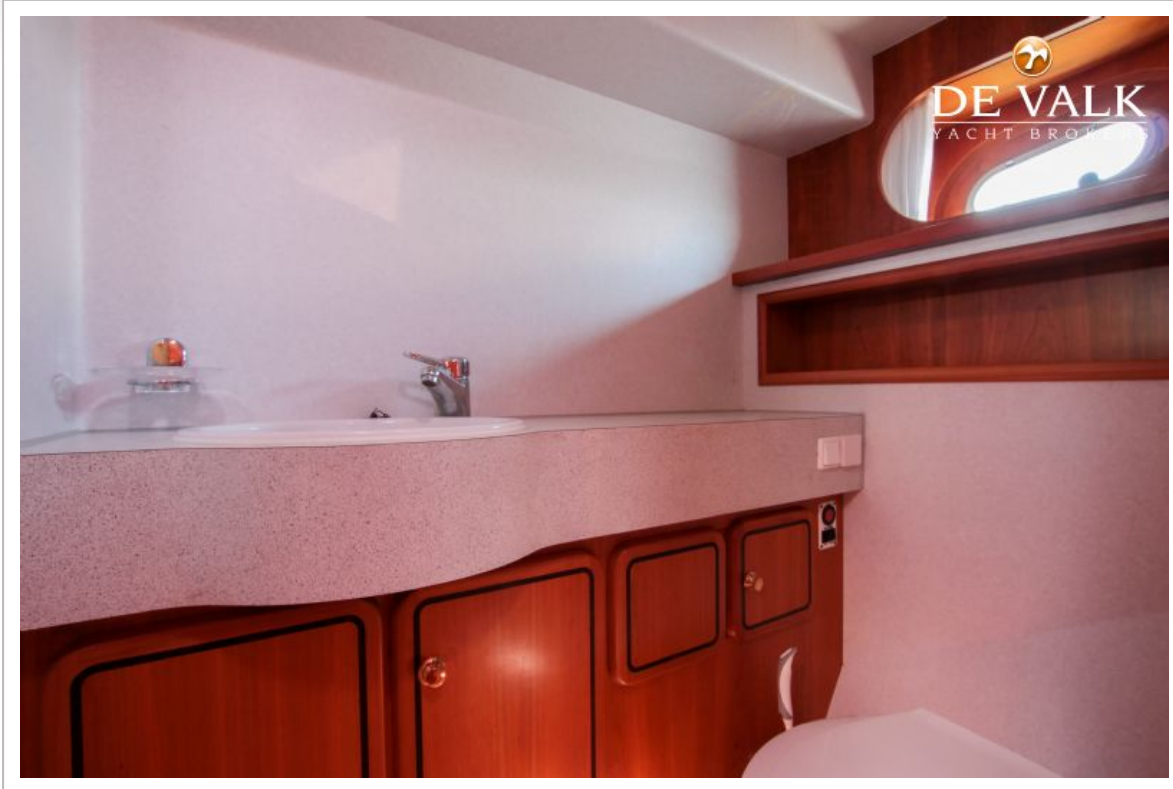
LINSSEN GRAND STURDY 470



LINSSEN GRAND STURDY 470



LINSSEN GRAND STURDY 470



LINSSEN GRAND STURDY 470

