



DE VALK
YACHT BROKERS



PRIVATEER TRAWLER 52



DE VALK
YACHT BROKERS

PRIVATEER TRAWLER 52

BROKER'S COMMENTS

The Privateer Trawler 52 "Privateer" is build in 2008 at the Privateer Yachts shipyard in The Netherlands. Steel long range trawler with a flared bow and multi hard chine hull, CE A certified. With her fuel capacity of approx 5400 L and her economic Vetus Deutz diesel engines "Privateer" has a range of approx 2500 NM at 7 kn. She is equipped with hydraulic fin stabilizers, hydraulic bow- and sternthruster, Mastervolt generator double glazed windows, central heating and airconditioning. "Privateer" is well maintained and ready to go.

Arne Doodeman

SPECIFICATIONS

Dimensions	15.60 x 4.95 x 1.40 (m)	Builder	Privateer Yachts
Built	2008	Cabins	3
Material	Steel	Berths	6
Engine(s)	2 x Vetus Deutz DTA 44 diesel	Hp/Kw	2 x 140.00 (hp), 102.90 (kw)
Asking price	sold (VAT)	Lying	at sales office

CONTACT

Sales office	De Valk Sneek	Telephone	+31 515 42 80 30
Address	Zwolsmanweg 7 8606 KC Sneek The Netherlands	E-mail	sneek@devalk.nl

DISCLAIMER

These particulars are given in good faith as supplied but cannot be guaranteed.



PRIVATEER TRAWLER 52

GENERAL

Model	PRIVATEER TRAWLER 52
Type	motor yacht
LOA (m)	15,60
LWL (m)	14,00
Beam (m)	4,95
Draft (m)	1,40
Air draft (m)	3,80
Year built	2008
Launched	08-2008
Builder	Privateer Yachts
Country	The Netherlands
Displacement (t)	35
CE norm	A
Hull material	steel
Hull colour	blue
Hull thickness (mm)	6 and 5 mm
Hull shape	multi hard chine Flared bow
Keel type	box keel Stream-lined box keel 10 mm
Superstructure material	steel
Superstructure (mm)	4 mm
Deck plate thickness (mm)	4 mm
Rubbing strake	stainless steel
Deck material	steel
Deck finish	non-skid paint
Cockpit deck finish	teak
Antifouling (year)	Every year new antifouling
Window frame	aluminium
Window material	double glazing
Deckhatch	4x
Portholes	aluminium 8 x



PRIVATEER TRAWLER 52

Insulation	foam
Flybridge	yes
Flybridge suncover	Bimini
Mast can be lowered	manual
Fuel tank (litre)	steel Approx 5100L (2 x 2550L
Fuel daytank (litre)	2 x 200L
Freshwater tank (litre)	800L
Blackwater tank (litre)	350L
Level indicator (blackwater)	VDO
Wheel steering	hydraulic
Inside helm position	yes
Flybridge helm position	hydraulic
More info on paintwork	Complete new paintwork in 2015

ACCOMMODATION

Cabins	3
Berths	6
Interior	teak
Floor	teak and holly
Open cockpit	yes
Saloon	yes
Heating	central heating
Air-conditioning	yes
Opening door to cockpit	yes
Galley	yes
Countertop	corian
Sink	stainless steel
Cooker	calor gas 4 burner
Extractor	yes
Microwave/oven combi	yes
Fridge	Isotherm



PRIVATEER TRAWLER 52

Freezer	Liebherr freezer in the lazarette
Hot water system	220V
Water pressure system	electrical
Owners cabin	French bed
Wardrobe	yes
Bathroom	en suite
Toilet	yes
Toilet system	electric
Wash basin	yes
Shower	yes
Guest cabin 1	French bed
Wardrobe	yes
Bathroom	shared
Toilet	yes
Toilet system	electric
Wash basin	yes
Guest cabin 2	bunk bed
Washing machine	Candy
Dryer	Candy

MACHINERY

No of engines	2
Make	Vetus Deutz
Type	DTA 44
HP	140
kW	102,90
Fuel	diesel
Maximum speed (kn)	8,5
Cruising speed (kn)	7
Consumption (l/hr)	15 at 7 kn
Engine hours	1980



PRIVATEER TRAWLER 52

Engine cooling system	freshwater heat exchanger
Drive	shaft
Engine controls	electrical
Gearbox	hydraulic ZF 45A
Bowthruster	hydraulic Vetus proportional
Sternthruster	hydraulic Vetus proportional
Thrust bearing	Phyton
Propeller type	fixed
Propeller blades	4 bladed
Propeller shaft material	stainless steel
Shaft lubrication	water
Electric bilge pump	4x
Generator	Mastervolt Whisper 6 Ultra
Running hours generator	270 hours
Start battery	yes
Service battery	8 x 220ah Victron batteries (2017)
Generator battery	1 x (2016)
Battery monitor	Victron
Battery charger/inverter	2 x Victron Phoenix Multi plus 24/3000/70
Shorepower	with cable
Insulation transformer	Victron Insulation transformer
Watermaker	150l/h (2015)
Stabilizers	fin Vetus
Extra info	Fuel polishing system

NAVIGATION

Forw. looking depth sounder	FLS platinum sonar
Log	Raymarine ST60+
Windset	Raymarine ST60+
VHF	Raymarine Ray 240E
Autopilot	Raymarine ST8002



PRIVATEER TRAWLER 52

Rudder angle indicator	In the autopilot
Radar	Raymarine scanner
Radar/GPS/plotter	Neovo 19" LCD display for GPS/radar/ais/camera
Navtex	ICS nav6
AIS receiver	yes
Camera	yes
Navigation lights	yes
Searchlight	yes
Extra info	Raymarine keyboard
Extra info	Raymarine E120 and Raymarine ST7002 on the flybridge

EQUIPMENT

Bimini	On the flybridge
Cockpit cushions	yes
Cockpit table	yes
Bathing platform	yes
Boarding ladder	yes
Transom door	yes
Gangway	Opacmare 2.7 m. (2015)
Anchor	yes
Anchor chain	Approx. 100m
Windlass	hydraulic Vetus
Deck wash	yes
Deck crane	Mast on the flybridge
Sea railing	stainless steel
Railing side opening gates	3 x pantographic doors (BB/SB/aft)
Life raft	container Plastimo
Rope cutter	yes
Wiper	3 x
Horn	yes
Fenders	yes



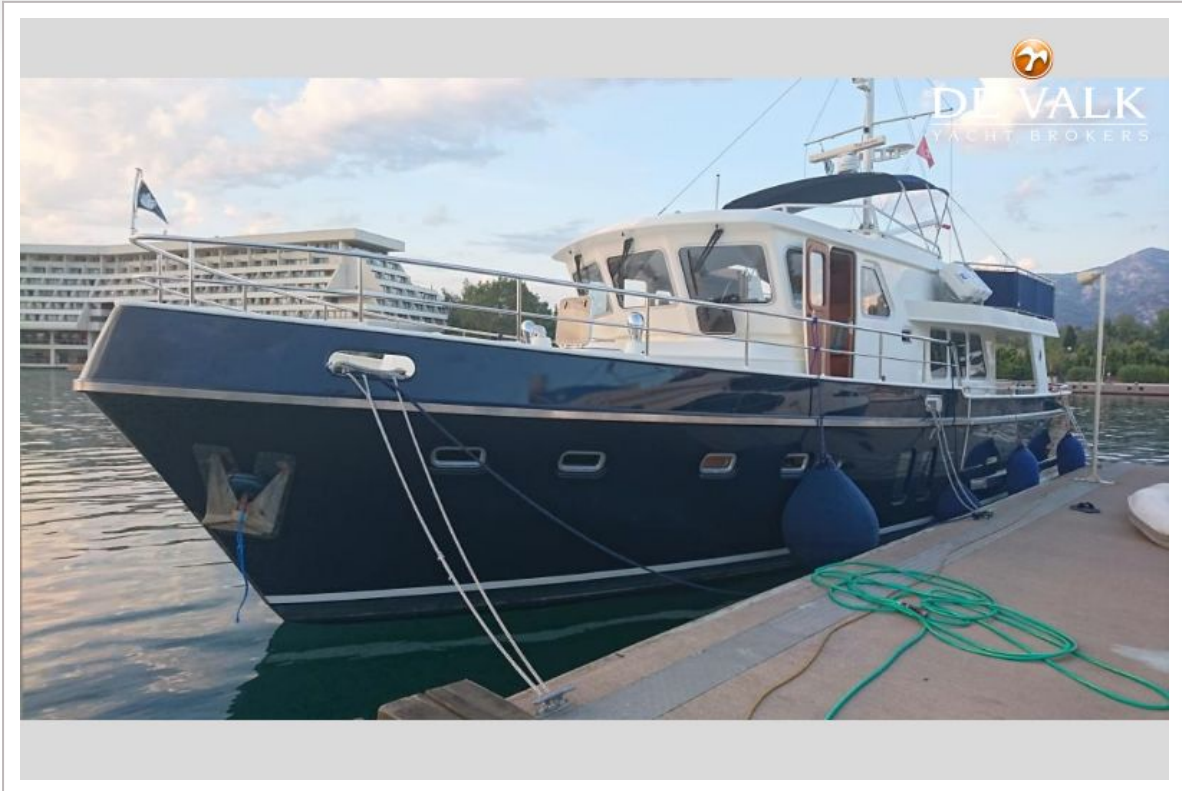
Mooring lines	yes
Radio-cd player	Kenwood
Fire extinguisher	yes
Extinguisher in engine room	yes



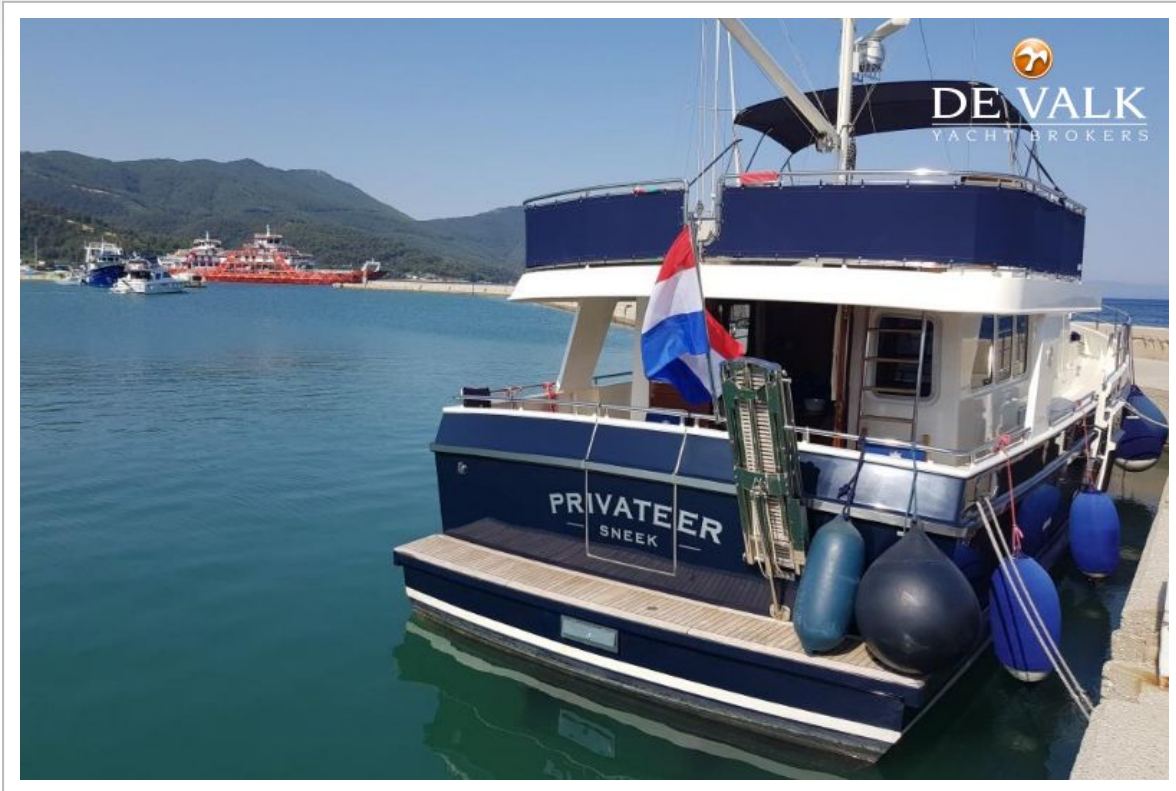
PRIVATEER TRAWLER 52



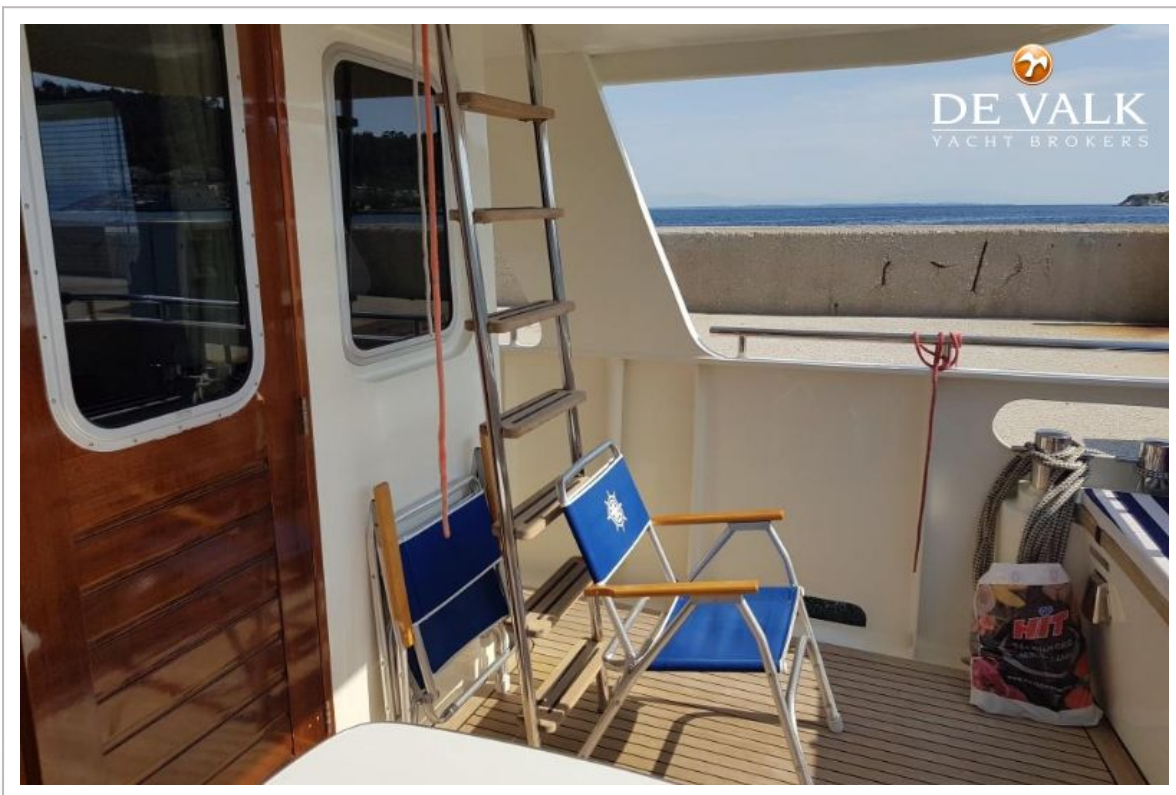
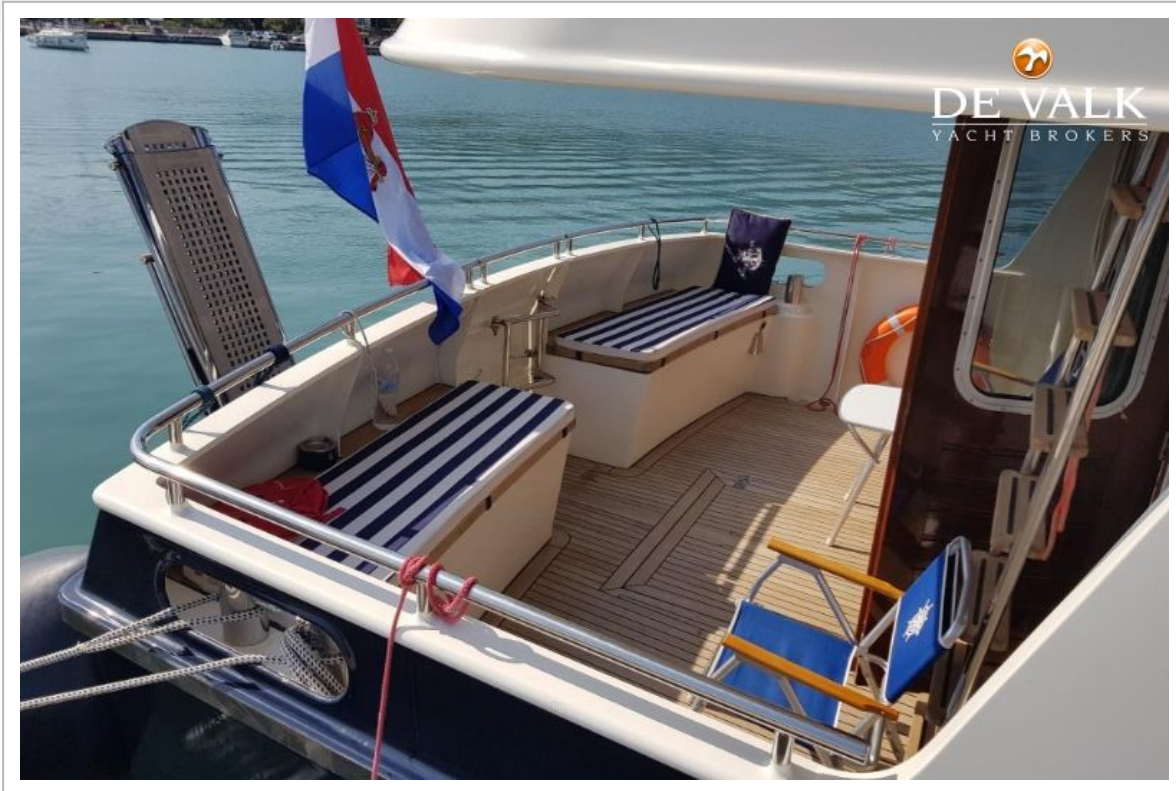
PRIVATEER TRAWLER 52



PRIVATEER TRAWLER 52



PRIVATEER TRAWLER 52



PRIVATEER TRAWLER 52



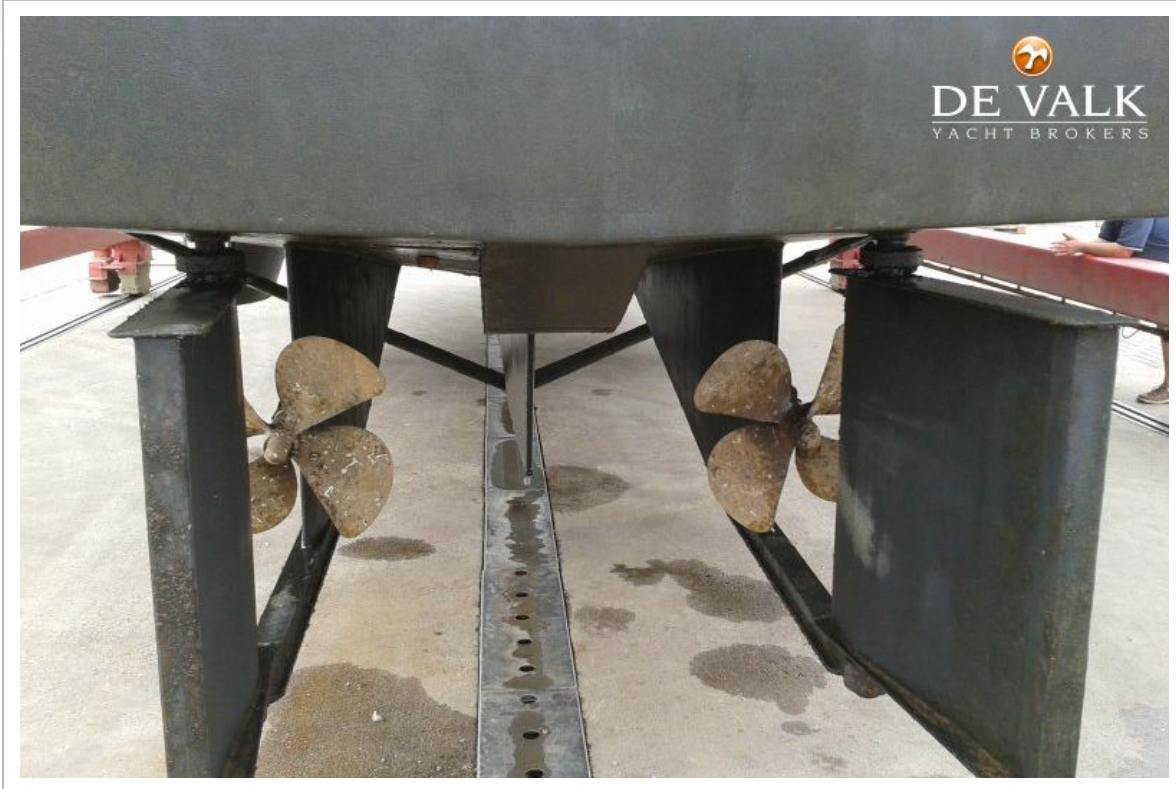
PRIVATEER TRAWLER 52



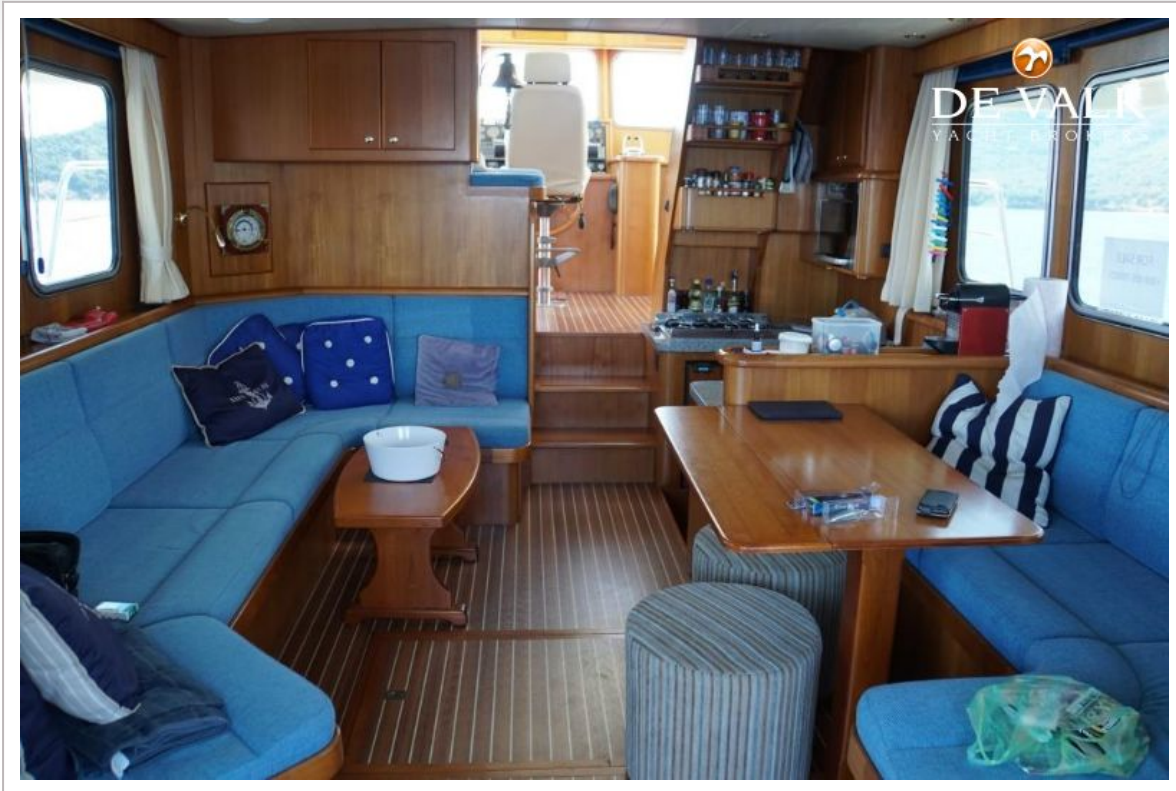
PRIVATEER TRAWLER 52



PRIVATEER TRAWLER 52



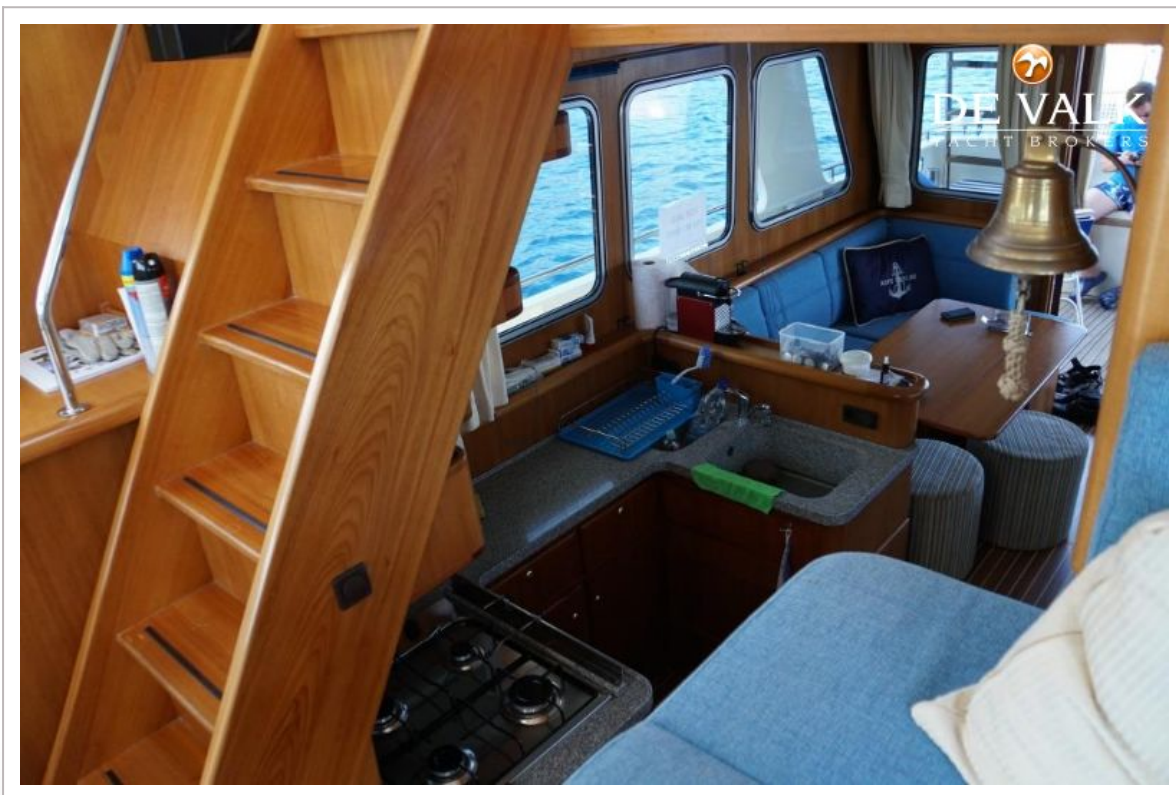
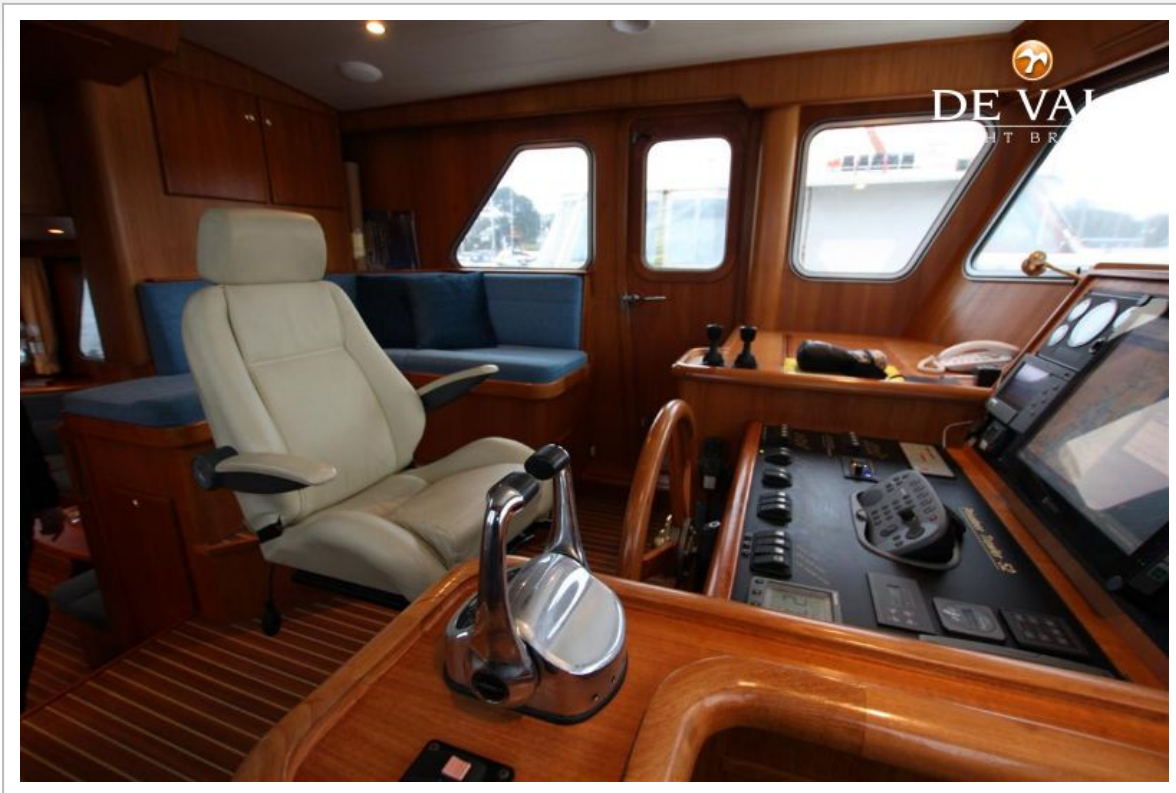
PRIVATEER TRAWLER 52



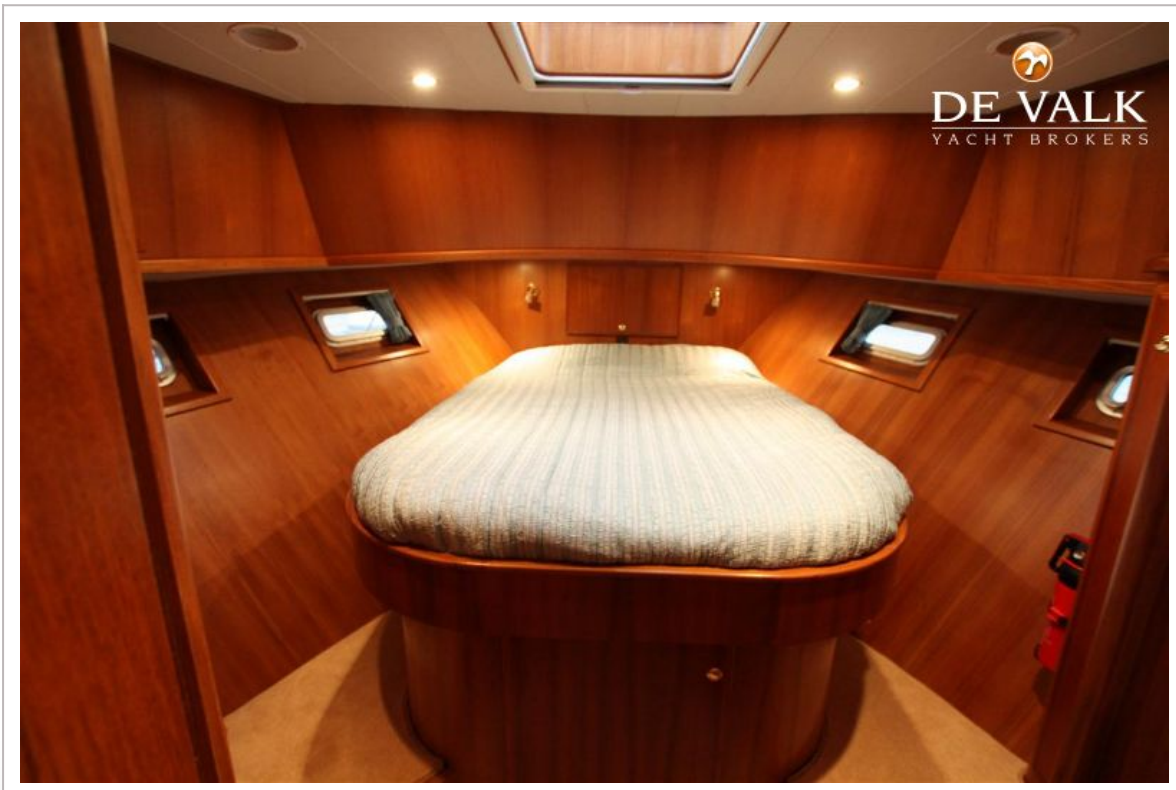
PRIVATEER TRAWLER 52



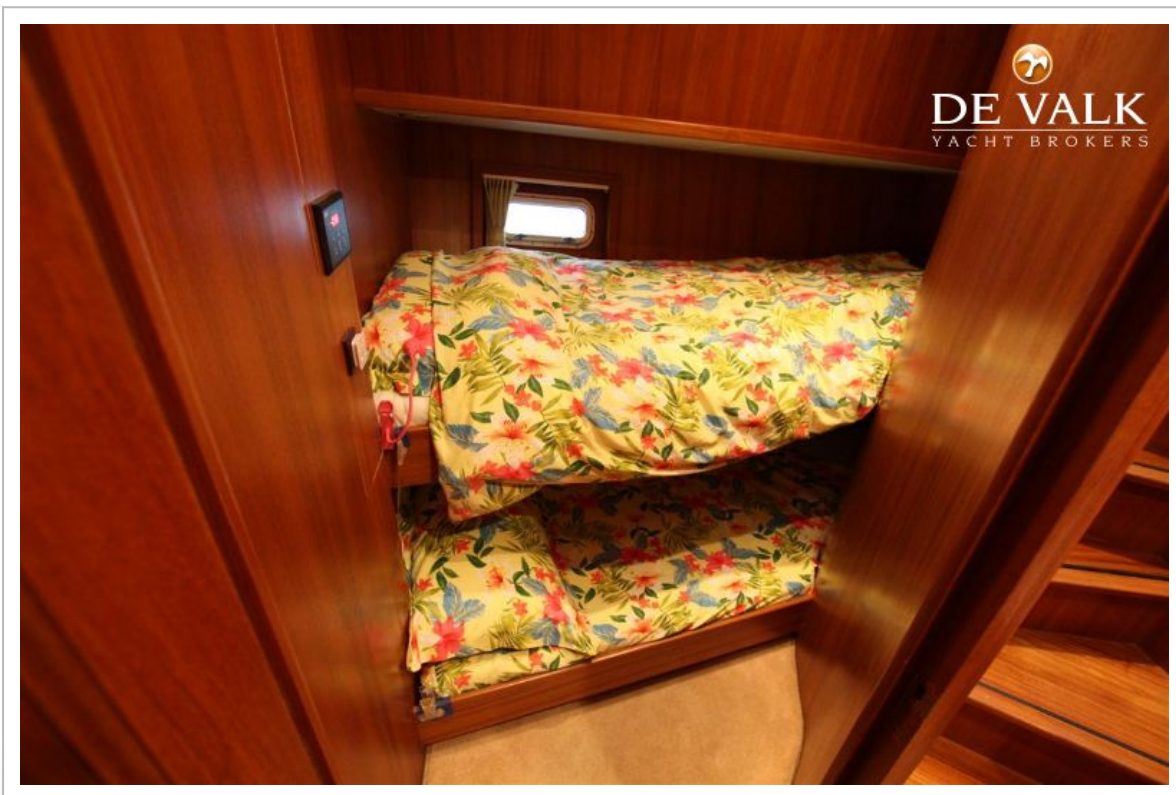
PRIVATEER TRAWLER 52



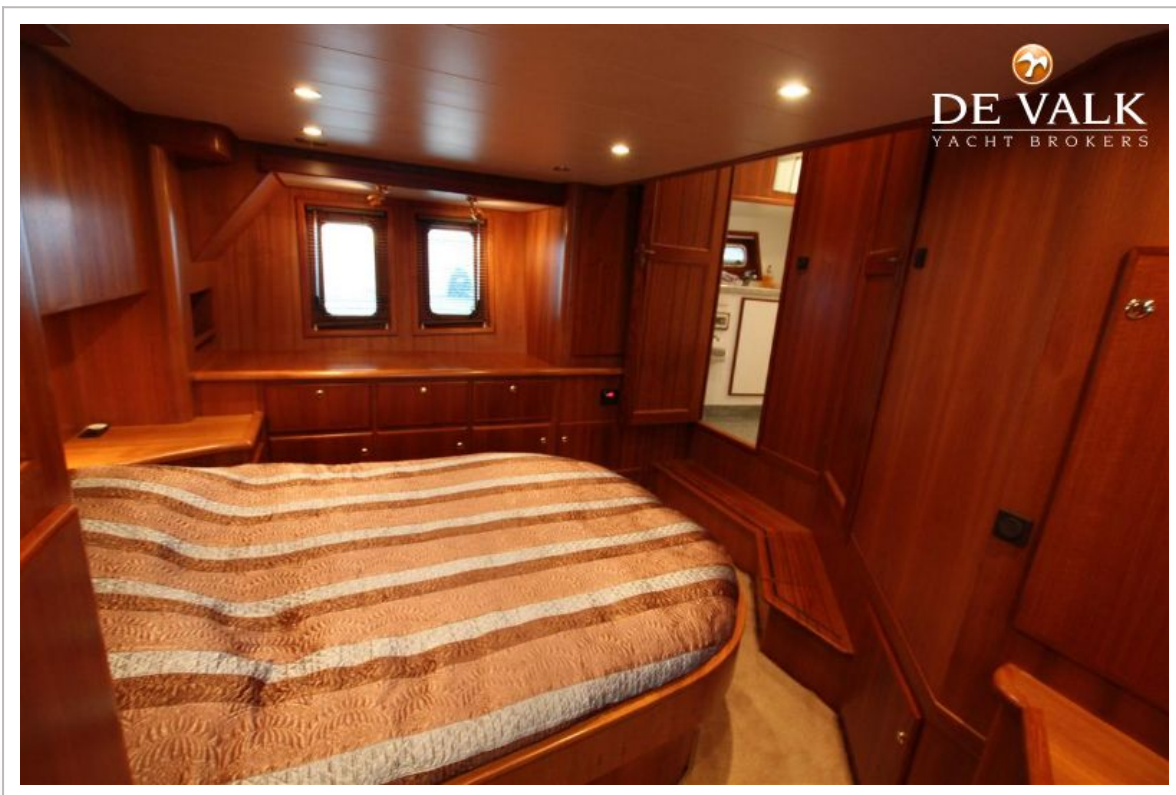
PRIVATEER TRAWLER 52



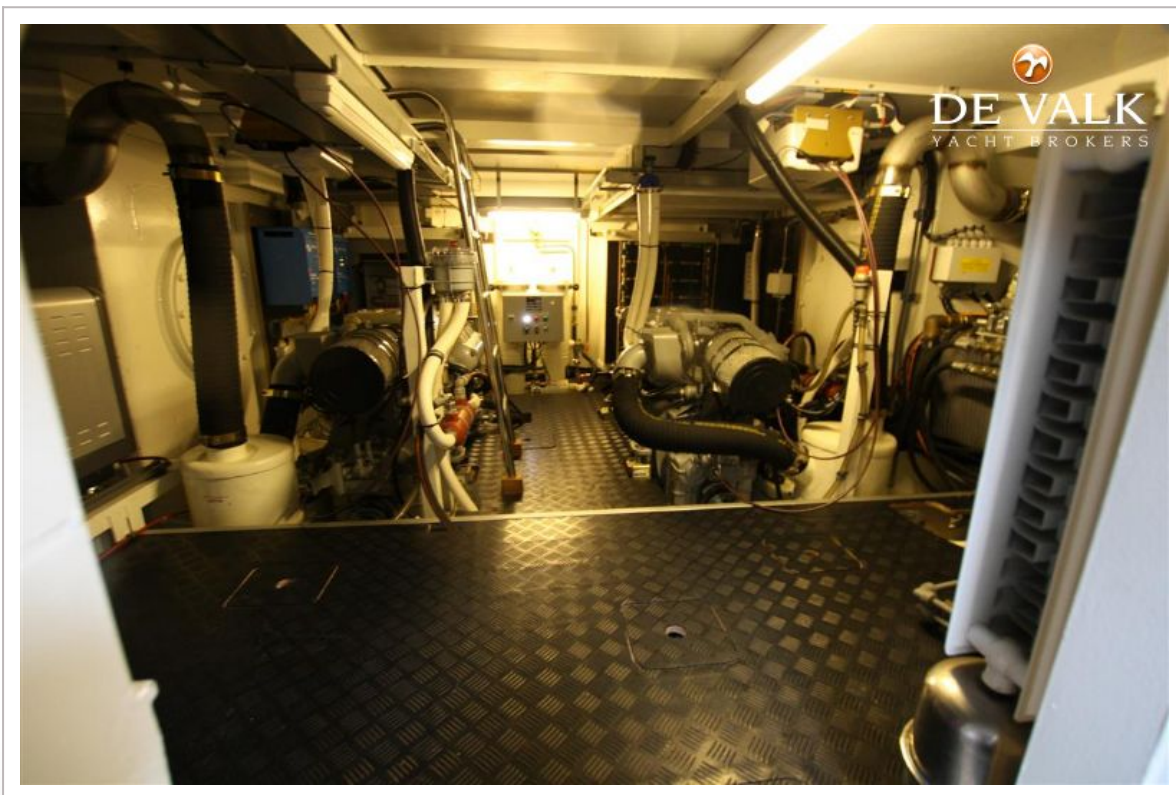
PRIVATEER TRAWLER 52



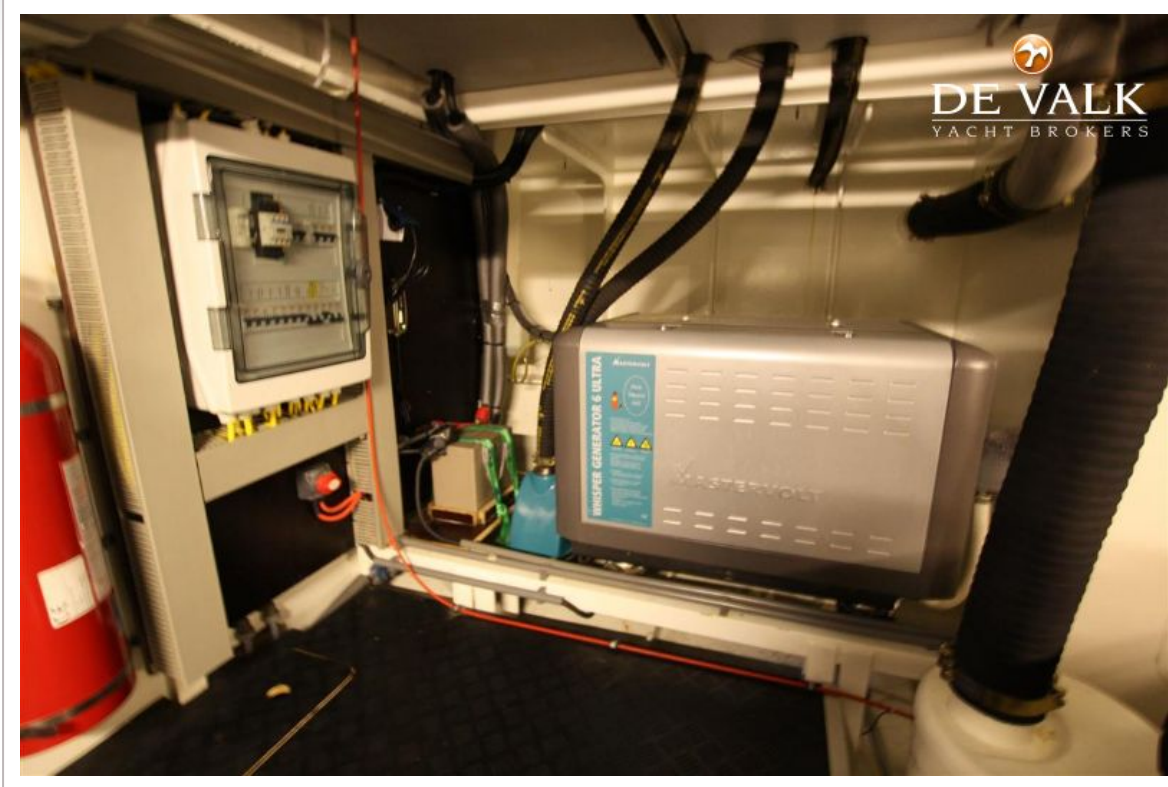
PRIVATEER TRAWLER 52



PRIVATEER TRAWLER 52



PRIVATEER TRAWLER 52



PRIVATEER TRAWLER 52

