



DE VALK
YACHT BROKERS



ATLANTIC 444



DE VALK
YACHT BROKERS

ATLANTIC 444

BROKER'S COMMENTS

Atlantic 444 "made in Holland" a great yacht, in a beautiful condition with two Volvo Penta 370 hp diesel engines. Let this 444 take you to the most beautiful locations in Europe. . . in view of the low clearance height, a trip through France is certainly a possibility. Are you looking for a 14 meter +, 2 cabins, polyester, fast motor yacht, then your first "stop" is De Valk Jachtmakelaars Sneek. This Atlantic 444 is located in our covered sales marina in Sneek. . .we see you soon.

Henk de Vries

SPECIFICATIONS

Dimensions	14.15 x 4.50 x 3,30 / 1.25 (m)	Builder	Holland Boat BV
Built	2000	Cabins	2
Material	GRP	Berths	4
Engine(s)	2 x Volvo Penta TAMD 63P diesel	Hp/Kw	2 x 370.00 (hp), 272.32 (kw)
Asking price	sold (VAT)	Lying	at sales office

CONTACT

Sales office	De Valk Sneek	Telephone	+31 515 42 80 30
Address	Zwolsmanweg 7 8606 KC Sneek The Netherlands	E-mail	sneek@devalk.nl

DISCLAIMER

These particulars are given in good faith as supplied but cannot be guaranteed.



ATLANTIC 444

GENERAL

Model	ATLANTIC 444
Type	motor yacht
LOA (m)	14,15
Beam (m)	4,50
Draft (m)	1,25
Draft min (m)	3,30
Headroom (m)	2,00
Year built	2000
Launched	2000
Builder	Holland Boat BV
Country	The Netherlands
Designer	John Bennet
Displacement (t)	18
CE norm	B
Hull material	GRP
Hull colour	white
Hull shape	deep-V
Superstructure material	GRP
Rubbing strake	stainless steel Rubber with
Deck material	GRP
Deck finish	teak
Superstructure deck finish	non-skid moulded in
Cockpit deck finish	teak
Dorades	Vetus
Window frame	stainless steel
Window material	glass
Deckhatch	Bomar
Portholes	stainless steel
Insulation	foam
Radar arch	collapsible



Mast can be lowered	yes
Fuel tank (litre)	stainless steel 900
Fuel tank 2 (litre)	stainless steel 900
Level indicator (fuel tank)	VDO
Freshwater tank (litre)	stainless steel Ca 675 (in 2 tanks)
Level indicator (freshwater)	VDO
Blackwater tank (litre)	stainless steel 2x ca 150
Level indicator (blackwater)	VDO
Blackwater tank extraction	deck extraction + pump
Wheel steering	hydraulic
Outside helm position	hydraulic

ACCOMMODATION

Cabins	2
Berths	4
Interior	cherry
Floor	carpet Wood &
Aft deck	yes
Saloon	yes
Headroom saloon (m)	2.0
Heating	diesel ducted hot air Eberspacher D5LC + remote control
Heating 2	diesel ducted hot air Eberspacher D5LC + remote control
Air-conditioning	single cycle airco Eberspacher
Aft Cabin	yes
Sliding door to aft deck	yes
Galley	yes
Countertop	Duropol
Sink	stainless steel
Cooker	induction Miele 4-pits (2019)
Extractor	Siemens
Microwave/oven combi	Siemens Microwelle plus



ATLANTIC 444

Fridge	1x Miele (2022) & 1x Coolmatic
Freezer	In both fridges
Hot water system	220V + engine Boiler 55 ltr
Water pressure system	electrical
Dishwasher	Siemens Aqua Stop
Owners cabin	French bed
Bed length (m)	2.0
Wardrobe	hanging/drawers/shelves
Bathroom	en suite
Toilet	en suite
Toilet system	electric Sanimarine Sea
Wash basin	in the bathroom
Shower	en suite
Guest cabin 1	French bed
Bed length (m)	2.0
Wardrobe	hanging/drawers/shelves
Bathroom	en suite
Toilet	en suite Rheinstrom
Toilet system	electric
Wash basin	in the bathroom
Shower	en suite
Washing machine/dryer combi	Siemens Topline

MACHINERY

No of engines	2
Make	Volvo Penta
Type	TAMD 63P
HP	370
kW	272.32
Fuel	diesel
Maximum speed (kn)	21



ATLANTIC 444

Engine hours	3290/3290
Engine cooling system	freshwater heat exchanger
Drive	shaft
Shaft seal	yes
Engine controls	electrical ZF-Micro Commander
Gearbox	hydraulic ZF LRM120A
Bowthruster	electric Vetus 160 kgf
Sternthruster	electric Vetus 160 kgf
Exhaust	watercooled
Propeller type	fixed 23 x39"
Propeller blades	4
Propeller shaft material	stainless steel 55 mm
Shaft lubrication	water
Manual bilge pump	yes
Electric bilge pump	yes
Electrical installation	12V / 24V / 230V
Generator	Mastervolt Whisper 6000 (2022)
Batteries	12
Start battery	2x
Service battery	4x
Generator battery	1x
Bowthruster battery	2x
Sternthruster battery	2x
Windlass battery	1x
Battery monitor	CMS-10R-DA/DC12-48V-Z2
Battery charger	Mastervolt
Inverter	Struder XTM 3500-24 -3.5 kW
Shorepower	yes
Trimtabs	EITrim

NAVIGATION



Electric compass	Furuno Sat.SC33
Depth sounder	Furuno FI-70
Forw. looking depth sounder	Furuno FI-70
Windset	yes
Fish finder	Furuno NAVnet
VHF	2x Furuno
VHF handheld	1x Icom IC-M910
Autopilot	Furuno FI-70
Rudder angle indicator	Furuno
Radar/GPS/plotter	2x Furuno NAVnet TZ2 touch
Wifi antenna	WLAN-Router AVM Fritzbox 6890 LTE
AIS transceiver	Furuno
EPIRB	McMurdo SmartFind G8
Navigation lights	yes
Searchlight	Sanshin
Loudhailer	With 2 handsets Kenwood
Extra info	2x Furuno NAVnet TZ2 touch 6x Furuno FI-70

EQUIPMENT

Fixed windscreen	yes
Sprayhood	yes
Bimini	yes
Cockpit cushions	yes
Cockpit table	yes
Bathing platform	yes
Boarding ladder	stainless steel
Bow ladder	Stainless Steel
Deck shower	yes
Anchor	yes
Anchor chain	100 mtr
Windlass	electrical Simpson-Lawrence



Davits	Stainless steel
Davits controls	electrical
Sea railing	stainless steel
Grab rail (superstructure)	stainless steel
Railing side opening gates	yes
Life raft	SeaSafe,4 Pro-Light
Last life raft survey	2022
Wiper	3x
Window ventilator	3x
Horn	yes
Radar reflector	Echomax aktiv dualband X/S
Fenders	yes
Mooring lines	yes
Spare parts	yes
TV	2x flatscreen salon & owners cabin TechniSat
TracVision ball	TracVision TV5
Radio-cd player	2x Fusion & JVC
Cockpit speakers	Fushion Marine
Speakers in salon	Sony
Speakers in cabin	Fushion Marine 77W
Clock - barometer	yes
Fire extinguisher	yes
Auto extinguisher system	yes



ATLANTIC 444



ATLANTIC 444



ATLANTIC 444



ATLANTIC 444



ATLANTIC 444



ATLANTIC 444



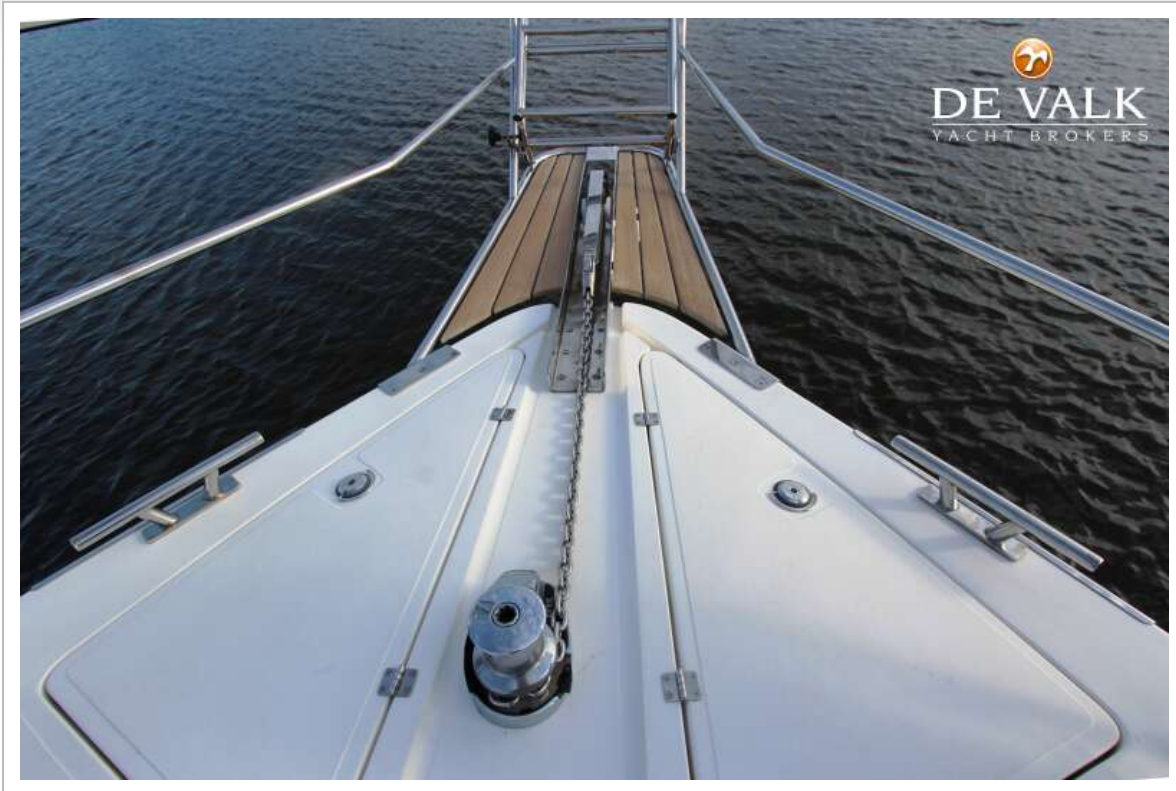
ATLANTIC 444



ATLANTIC 444



ATLANTIC 444



ATLANTIC 444



ATLANTIC 444



ATLANTIC 444



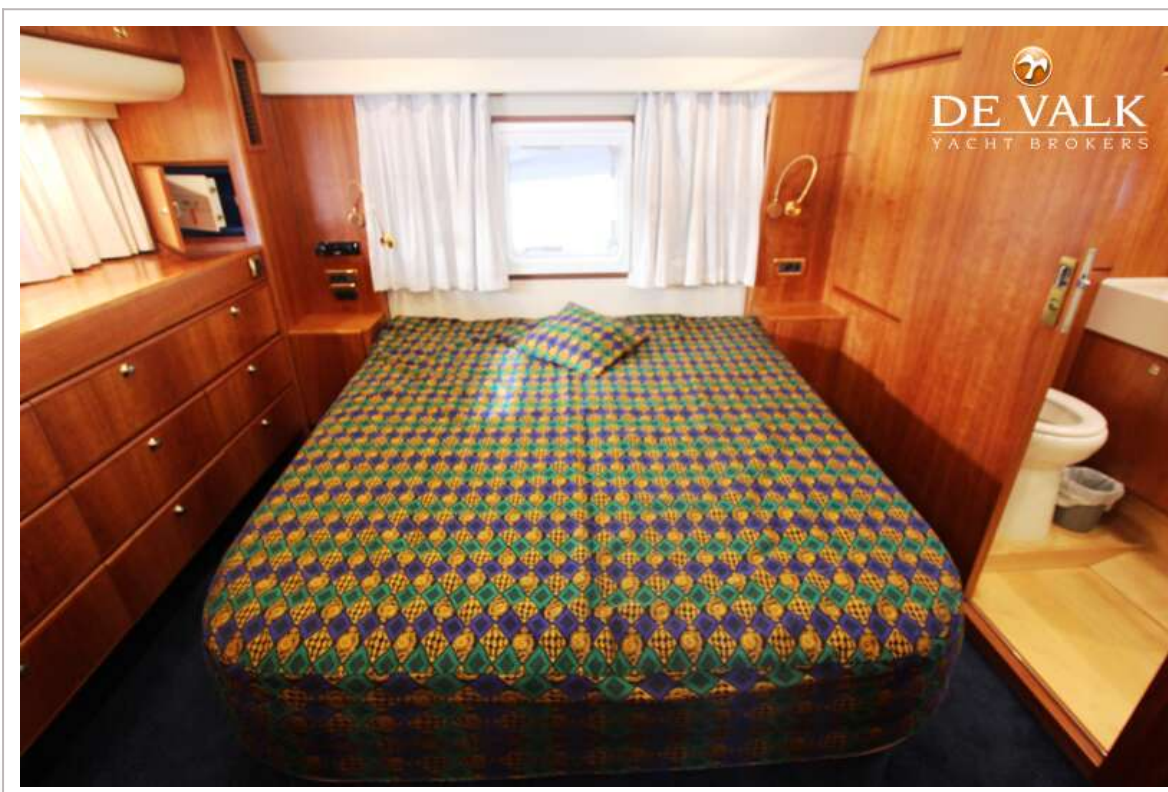
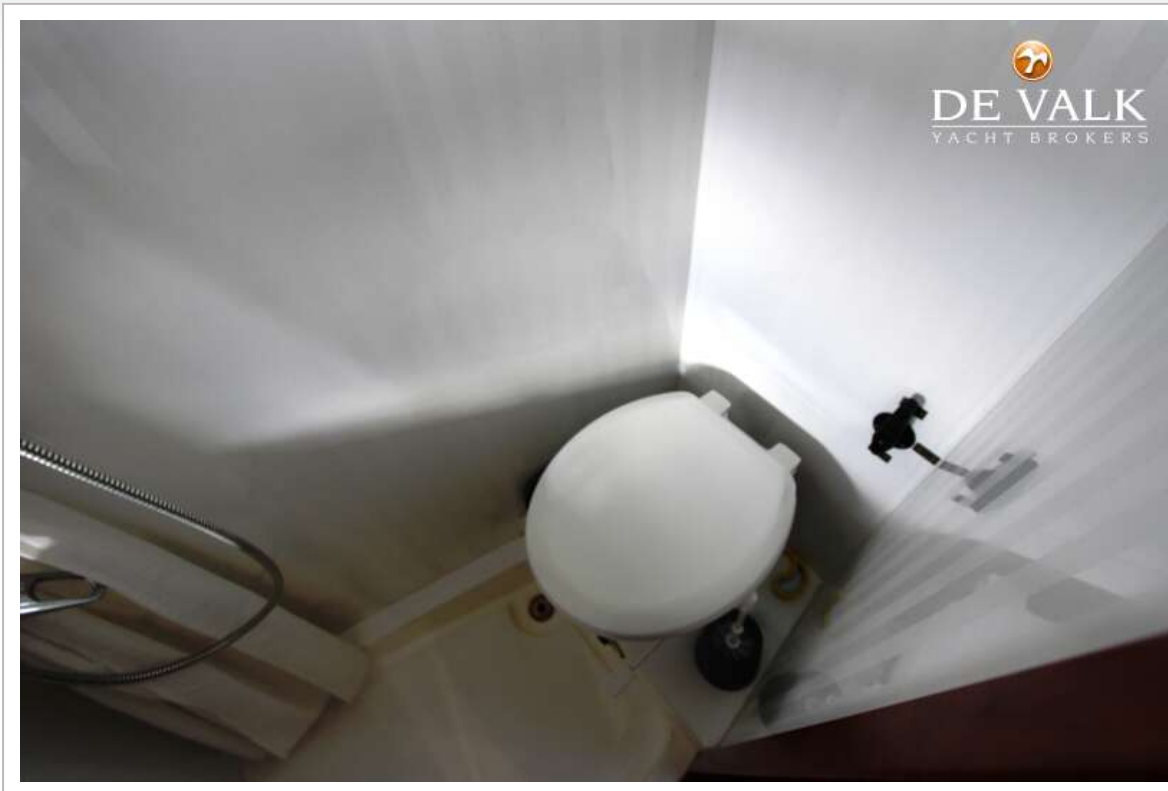
ATLANTIC 444



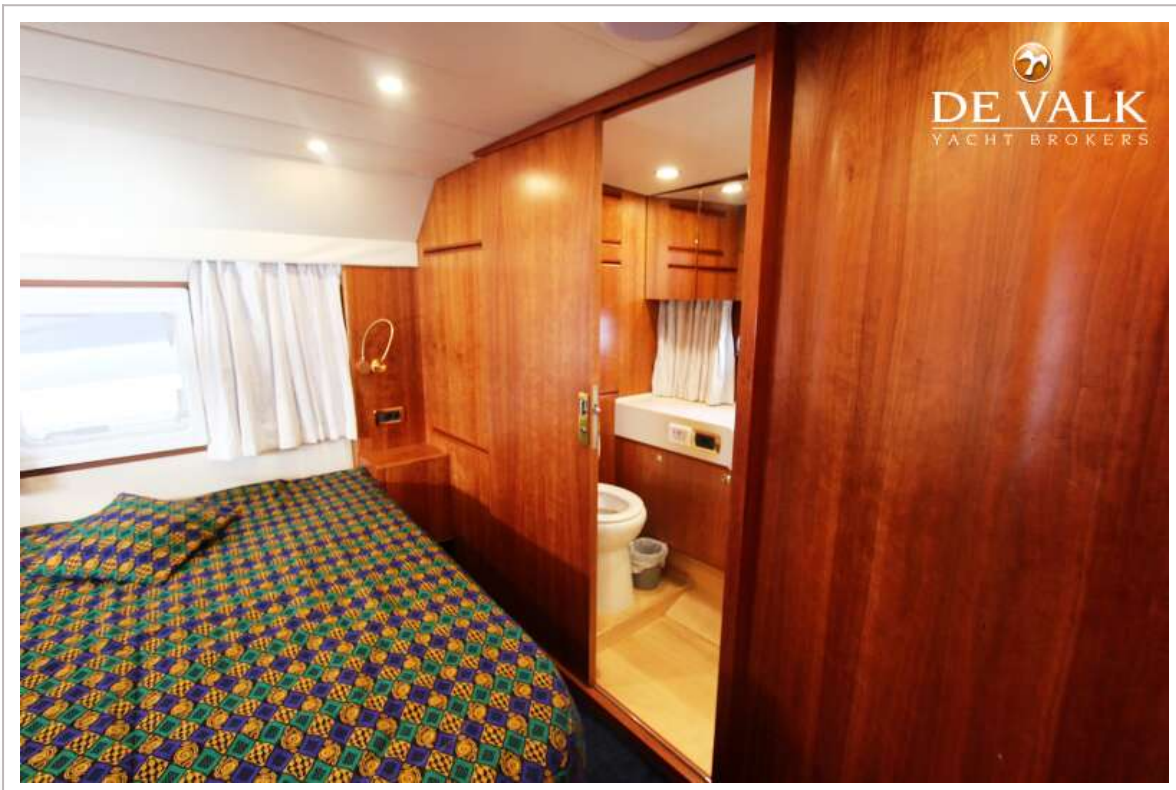
ATLANTIC 444



ATLANTIC 444



ATLANTIC 444



ATLANTIC 444



