



DE VALK
YACHT BROKERS



RIJNLANDVLET 1350



DE VALK
YACHT BROKERS

BROKER'S COMMENTS

The Rijnlandvlet 1350 was build in 2001 by "de Volharding" in Zwammerdam. This classic vlet has a inside and outside steering position. Inside you will find two cabins and a seperate shower and toilet. A long stay on board is no problem due to her spacious interior and she is perfect for rivers and coastal waters.

Arjen Hoeksma

SPECIFICATIONS

Dimensions	13.50 x 4.40 x 1.40 (m)	Builder	De Volharding
Built	2001	Cabins	2
Material	Steel	Berths	4
Engine(s)	1 x Vetus Deutz DT64 diesel	Hp/Kw	159.00 (hp), 116.87 (kw)
Asking price	sold (VAT)	Lying	at sales office

CONTACT

Sales office	De Valk Loosdrecht	Telephone	+31 35 582 90 30
Address	't Breukeleveense Meentje 6 1231 LM Loosdrecht / Wijdemeren The Netherlands	E-mail	loosdrecht@devalk.nl

DISCLAIMER

These particulars are given in good faith as supplied but cannot be guaranteed.



GENERAL

Model	RIJNLANDVLET 1350
Type	motor yacht
LOA (m)	13,50
Beam (m)	4,40
Draft (m)	1,40
Headroom (m)	1,95
Year built	2001
Builder	De Volharding
Country	The Netherlands
Hull material	steel
Hull colour	blue
Hull shape	round-bilged
Superstructure material	steel
Rubbing strake	fender rope
Deck material	steel
Deck finish	teak
Cockpit deck finish	teak
Dorades	yes
Window frame	wood
Window material	double glazing
Fuel tank (litre)	steel 2x
Level indicator (fuel tank)	yes
Freshwater tank (litre)	stainless steel
Level indicator (freshwater)	yes
Wheel steering	hydraulic
Inside helm position	yes
Outside helm position	hydraulic

ACCOMMODATION

Cabins	2
---------------	---



Berths	4
Interior	Light oakwood
Floor	Oakwood
Saloon	With large settee
Heating	Eberspacher 9,5kW
Dinette	yes
Dinette to convert into berth	Double berth
Sliding door to cockpit	Portside
Opening door to cockpit	yes
Galley	yes
Countertop	wood
Sink	stainless steel
Microwave	Whirlpool
Fridge	with freezer compartment Coolmatic
Hot water system	Boiler
Water pressure system	electrical Hydrofoor
Owners cabin	French bed
Wardrobe	shelves and hanging
Bathroom	en suite
Wash basin	in the bathroom
Shower	yes
Guest cabin 1	twin single
Wardrobe	shelves
Bathroom	shared
Toilet	shared
Toilet system	electric
Wash basin	in the bathroom

MACHINERY

No of engines	1
Make	Vetus Deutz



Type	DT64
HP	159,00
kW	116,87
Fuel	diesel
Year installed	1999
Engine cooling system	Intercooling
Gearbox	ZF 2.03
Bowthruster	electric
Sternthruster	electric
Propeller shaft material	stainless steel
Electrical installation	12V/24V/220V
Generator	Vetus 6kW
Batteries	8x 165Ah
Battery monitor	yes
Battery charger/inverter	Vetus 2000W
Shorepower	with cable

NAVIGATION

VHF	Shipmate RS8300
Plotter	Lowrance Globalmap 5000c (not installed)
Searchlight	With remote control

EQUIPMENT

Bimini	yes
Bathing platform	yes
Boarding ladder	stainless steel
Anchor	yes
Anchor chain	yes
Windlass	electrical
Deck wash	yes
Sea railing	stainless steel



Wiper	yes
Fenders	yes
Mooring lines	yes
Fire extinguisher	yes



RIJNLANDVLET 1350



RIJNLANDVLET 1350



RIJNLANDVLET 1350



RIJNLANDVLET 1350



RIJNLANDVLET 1350



RIJNLANDVLET 1350



RIJNLANDVLET 1350



RIJNLANDVLET 1350



RIJNLANDVLET 1350



RIJNLANDVLET 1350



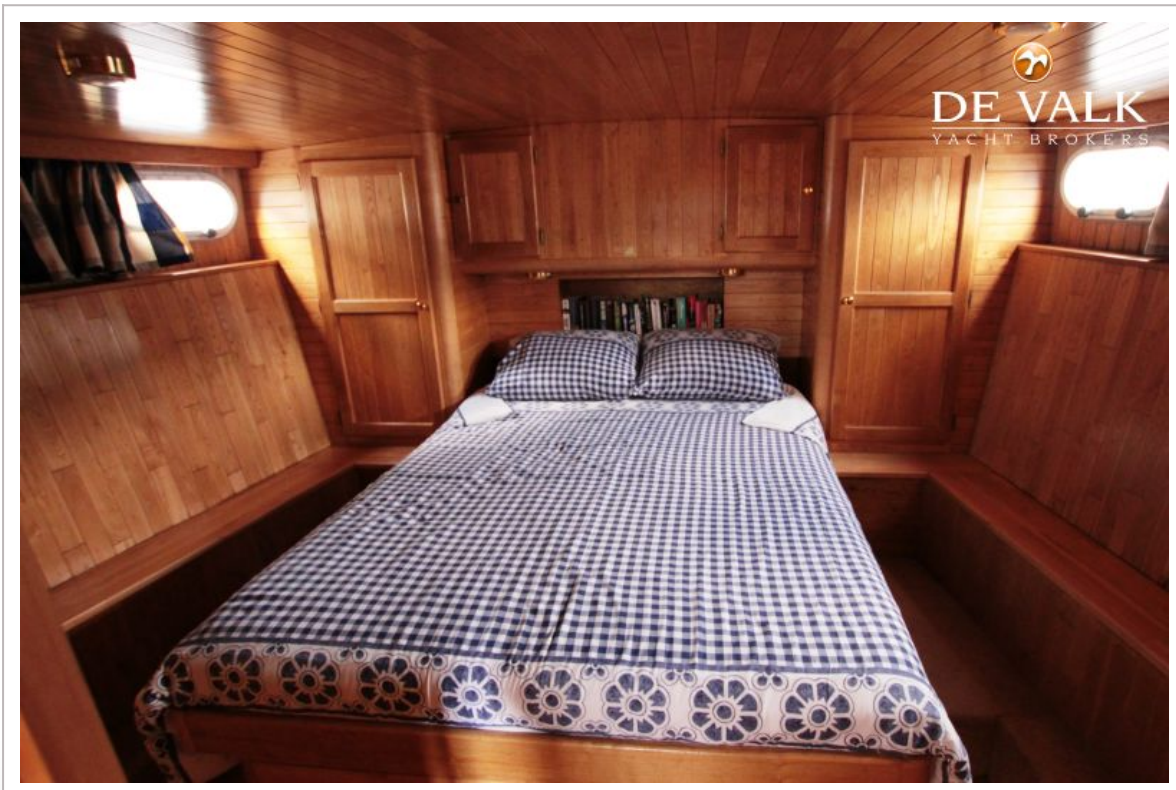
RIJNLANDVLET 1350



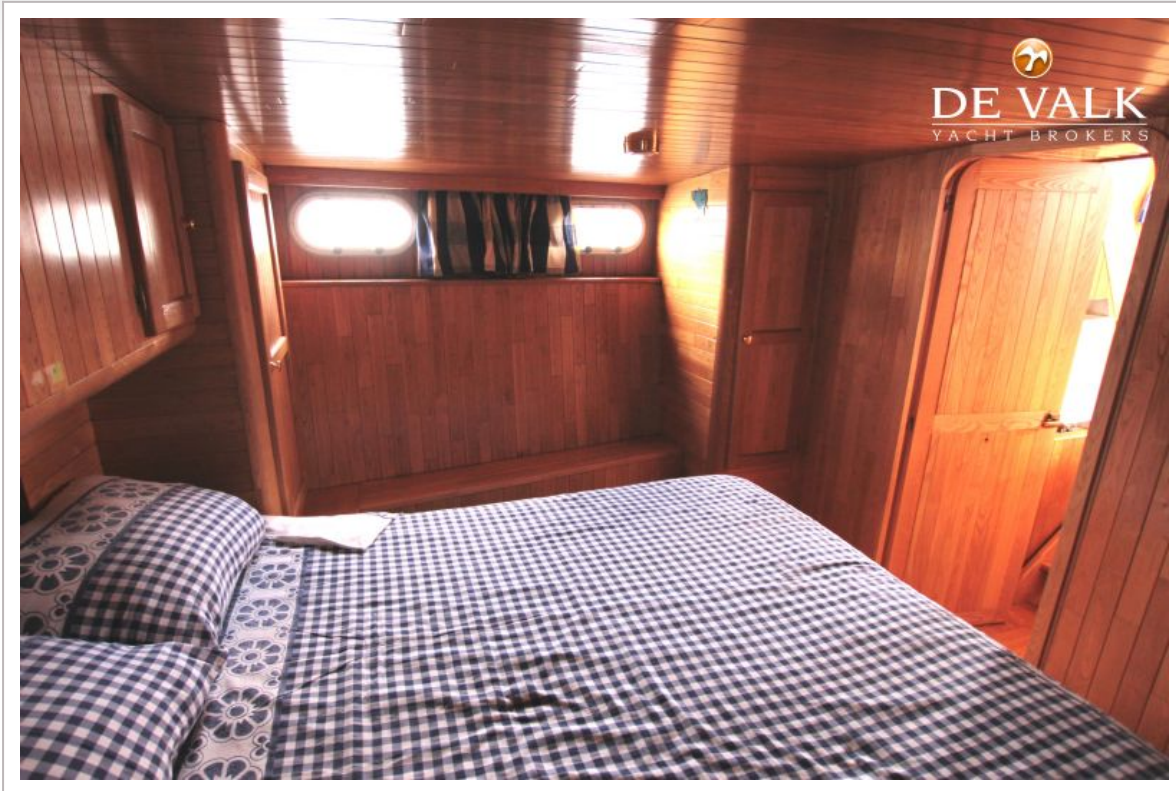
RIJNLANDVLET 1350



RIJNLANDVLET 1350



RIJNLANDVLET 1350



RIJNLANDVLET 1350



RIJNLANDVLET 1350

