



DE VALK  
YACHT BROKERS



## MV YACHTS FULL CONSOLE



DE VALK  
YACHT BROKERS

# MV YACHTS FULL CONSOLE

## BROKER'S COMMENTS

The MV Yachts Full Console is a fast motoryacht. She accomodates up to 10 people. The reliable Volvo Penta engine and the bowthruster make it possible to navigate even the smallest waterways.

*Arjen Hoeksma*

## SPECIFICATIONS

<b>Dimensions</b>	9 x 2.65 x 0.65 (m)	<b>Builder</b>	MV Yachts
<b>Built</b>	2007	<b>Cabins</b>	
<b>Material</b>	GRP	<b>Berths</b>	
<b>Engine(s)</b>	1 x Volvo Penta D3 diesel	<b>Hp/Kw</b>	190 (hp), 139.65 (kw)
<b>Asking price</b>	sold (VAT )	<b>Lying</b>	at sales office

## CONTACT

<b>Sales office</b>	De Valk Loosdrecht	<b>Telephone</b>	+31 35 582 90 30
<b>Address</b>	't Breukeleveense Meentje 6 1231 LM Loosdrecht / Wijdemeren The Netherlands	<b>E-mail</b>	loosdrecht@devalk.nl

## DISCLAIMER

These particulars are given in good faith as supplied but cannot be guaranteed.



# MV YACHTS FULL CONSOLE

## GENERAL

<b>Model</b>	MV YACHTS FULL CONSOLE
<b>Type</b>	motor yacht
<b>LOA (m)</b>	9,00
<b>Beam (m)</b>	2,65
<b>Draft (m)</b>	0,65
<b>Air draft (m)</b>	1,60
<b>Year built</b>	2007
<b>Builder</b>	MV Yachts
<b>Country</b>	The Netherlands
<b>Displacement (t)</b>	3,25
<b>Hull material</b>	GRP
<b>Hull colour</b>	blue
<b>Hull shape</b>	hard chine
<b>Superstructure material</b>	GRP
<b>Rubbing strake</b>	stainless steel
<b>Deck finish</b>	teak
<b>Fuel tank (litre)</b>	
<b>Level indicator (fuel tank)</b>	yes
<b>Freshwater tank (litre)</b>	yes
<b>Wheel steering</b>	hydraulic

## ACCOMMODATION

<b>Fridge</b>	
<b>Toilet</b>	In Console
<b>Toilet system</b>	electric

## MACHINERY

<b>No of engines</b>	1
<b>Make</b>	Volvo Penta



# MV YACHTS FULL CONSOLE

Type	D3
HP	190,00
kW	139,65
Fuel	diesel
Year installed	2007
Maximum speed (kn)	25
Engine hours	435 (21-7-2015)
Engine cooling system	freshwater heat exchanger
Engine controls	electrical Volvo
Bowthruster	electric
Exhaust	watercooled
Propeller type	fixed
Propeller blades	4
Electric bilge pump	yes
Start battery	720A 12V
Service battery	130AH 12V
Shorepower	with cable

## NAVIGATION

Compass	Magnetic Ritchie
GPS	Garmin GPS MAp720

## EQUIPMENT

Sprayhood	yes
Winter cover	yes
Cockpit cushions	yes
Cockpit table	both converts into a bed 2 x
Bathing platform	GRP + teak
Boarding ladder	stainless steel
Deck shower	yes
Anchor	7,5 kg



# MV YACHTS FULL CONSOLE

<b>Fenders</b>	4 x
<b>Mooring lines</b>	4 x
<b>Radio-cd player</b>	Kenwood remote on console
<b>Cockpit speakers</b>	2 x



# MV YACHTS FULL CONSOLE



# MV YACHTS FULL CONSOLE



# MV YACHTS FULL CONSOLE





# MV YACHTS FULL CONSOLE



# MV YACHTS FULL CONSOLE



# MV YACHTS FULL CONSOLE



# MV YACHTS FULL CONSOLE



# MV YACHTS FULL CONSOLE



# MV YACHTS FULL CONSOLE



# MV YACHTS FULL CONSOLE



# MV YACHTS FULL CONSOLE





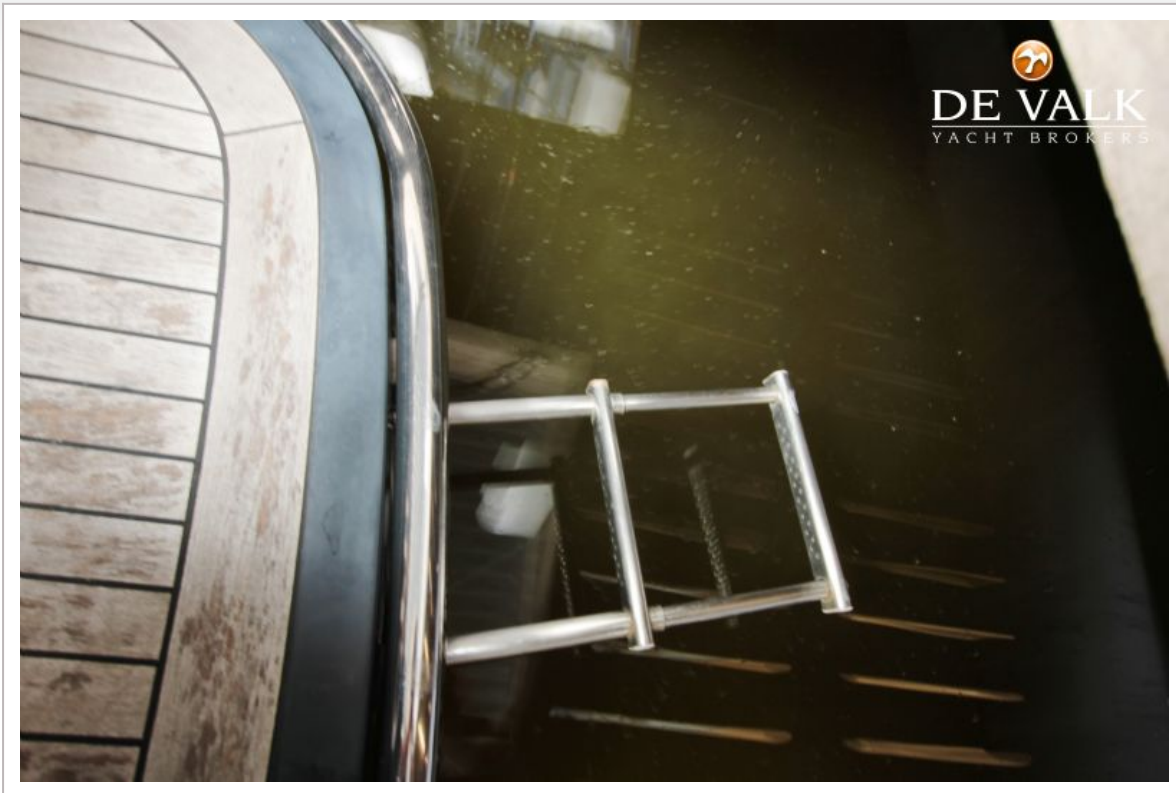
# MV YACHTS FULL CONSOLE



# MV YACHTS FULL CONSOLE



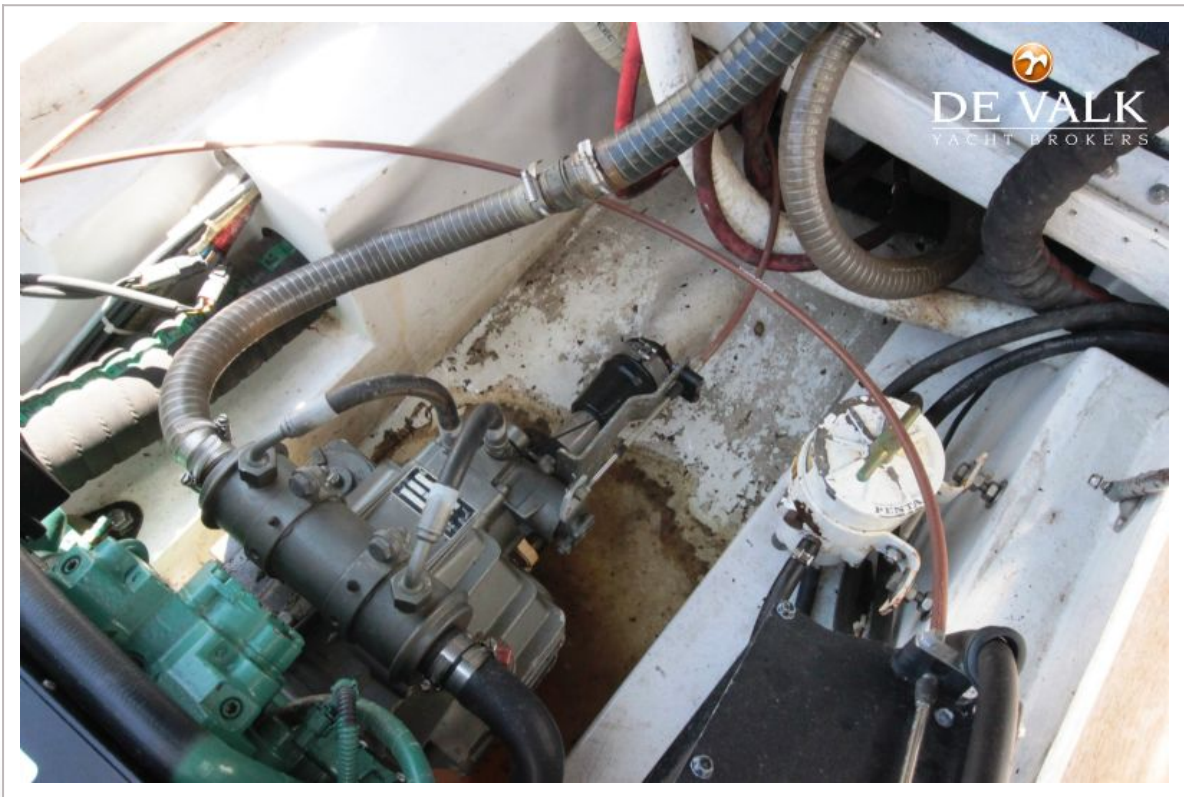
# MV YACHTS FULL CONSOLE



# MV YACHTS FULL CONSOLE



# MV YACHTS FULL CONSOLE



# MV YACHTS FULL CONSOLE



# MV YACHTS FULL CONSOLE

