



DE VALK  
YACHT BROKERS



JONGERT 16M



DE VALK  
YACHT BROKERS

## BROKER'S COMMENTS

The Jongert 16M is what you call an extraordinary vessel. With their classic clipper bows, ketch rigs and stern window it is a well seen classic timeless design.

*Hans Visser*

## SPECIFICATIONS

<b>Dimensions</b>	16.60 x 4.55 x 2.20 (m)	<b>Builder</b>	Jongert B.V.
<b>Built</b>	1977	<b>Cabins</b>	3
<b>Material</b>	Steel	<b>Berths</b>	6
<b>Engine(s)</b>	1 x Mercedes OM352 diesel	<b>Hp/Kw</b>	125.00 (hp), 91.88 (kw)
<b>Asking price</b>	€ 239.000 (VAT Exempt)	<b>Lying</b>	at sales office

## CONTACT

<b>Sales office</b>	De Valk Hindeloopen	<b>Telephone</b>	+31 514 52 40 00
<b>Address</b>	Oosterstrand 1 8713 JS Hindeloopen The Netherlands	<b>E-mail</b>	hindeloopen@devalk.nl

## DISCLAIMER

These particulars are given in good faith as supplied but cannot be guaranteed.



## GENERAL

<b>Model</b>	JONGERT 16M
<b>Type</b>	sailing yacht
<b>LOA (m)</b>	16,60
<b>Beam (m)</b>	4,55
<b>Draft (m)</b>	2,20
<b>Air draft (m)</b>	19,00
<b>Headroom (m)</b>	2,00
<b>Year built</b>	1977
<b>Builder</b>	Jongert B.V.
<b>Country</b>	The Netherlands
<b>Designer</b>	Peter Sijm
<b>Displacement (t)</b>	28
<b>CE norm</b>	NA
<b>Hull material</b>	steel
<b>Hull colour</b>	white
<b>Hull shape</b>	S-bilged
<b>Keel type</b>	long keel
<b>Superstructure material</b>	steel Wood and
<b>Deck material</b>	steel
<b>Deck finish</b>	teak 2019
<b>Cockpit deck finish</b>	teak 2019
<b>Antifouling (year)</b>	2020
<b>Window frame</b>	stainless steel
<b>Window material</b>	glass
<b>Portholes</b>	steel
<b>Insulation</b>	glasswool
<b>Fuel tank (litre)</b>	steel 900
<b>Level indicator (fuel tank)</b>	yes
<b>Freshwater tank (litre)</b>	steel 900
<b>Level indicator (freshwater)</b>	yes



<b>Blackwater tank (litre)</b>	steel 700
<b>Level indicator (blackwater)</b>	yes
<b>Blackwater tank extraction</b>	deck extraction + pump
<b>Wheel steering</b>	hydraulic
<b>Outside helm position</b>	yes
<b>More info on paintwork</b>	Repaint in 2019

## ACCOMMODATION

<b>Cabins</b>	3
<b>Berths</b>	6
<b>Interior</b>	mahogany
<b>Floor</b>	carpet 2020
<b>Aft deck</b>	yes
<b>Pilot house</b>	yes
<b>Saloon</b>	yes
<b>Headroom saloon (m)</b>	2
<b>Heating</b>	diesel ducted hot air Eberspächer
<b>Navigation center</b>	yes
<b>Chart table</b>	yes
<b>Dining room</b>	yes
<b>Dinette</b>	yes
<b>Opening door to cockpit</b>	yes
<b>Galley</b>	yes
<b>Countertop</b>	wood
<b>Sink</b>	stainless steel
<b>Cooker</b>	ceramic AEG
<b>Microwave/oven combi</b>	Sharp
<b>Hot water system</b>	220V Eldom
<b>Water pressure system</b>	electrical
<b>Kettle</b>	yes
<b>Coffee maker</b>	yes



# JONGERT 16M

Crockery	yes
Owners cabin	double bed
Wardrobe	hanging/drawers/shelves
Bathroom	en suite
Toilet	en suite
Toilet system	electric
Wash basin	in the bathroom
Shower	en suite
Guest cabin 1	bunk bed
Wardrobe	hanging and drawers
Bathroom	separate
Toilet	shared
Toilet system	electric
Wash basin	in the bathroom
Shower	shared
Guest cabin 2	v-bed
Wardrobe	hanging/drawers/shelves
Bathroom	separate
Toilet	shared
Toilet system	electric
Wash basin	in the bathroom
Shower	shared
Extra info	All lights are LED

## MACHINERY

No of engines	1
Make	Mercedes
Type	OM352
HP	125
kW	91.88
Fuel	diesel



# JONGERT 16M

<b>Year of overhaul</b>	2019
<b>Maximum speed (kn)</b>	9
<b>Cruising speed (kn)</b>	7,5
<b>Engine cooling system</b>	freshwater heat exchanger
<b>Engine controls</b>	yes
<b>Gearbox</b>	mechanical
<b>Bowthruster</b>	electric 2,9 kW
<b>Exhaust</b>	watercooled
<b>Propeller type</b>	fixed
<b>Propeller blades</b>	3
<b>Propeller shaft material</b>	stainless steel
<b>Shaft lubrication</b>	grease
<b>Manual bilge pump</b>	yes
<b>Electric bilge pump</b>	yes
<b>Electrical installation</b>	Mainly replaced in 2019
<b>Generator</b>	wet exhaust Onan 7 kW
<b>Start battery</b>	2x 225Ah
<b>Service battery</b>	4x 225Ah
<b>Battery charger</b>	Victron Skylla 24V50Amp and Victron Blue Smart
<b>Shorepower</b>	with cable

## NAVIGATION

<b>Depth sounder</b>	Raymarine Depth
<b>Log</b>	Raymarine Speed
<b>Windset</b>	Raymarine Wind
<b>VHF</b>	Raymarine A80289
<b>Autopilot</b>	Robertson
<b>Plotter</b>	2x Raymarine AIS Axiom
<b>Electronic chart(s)</b>	yes
<b>Navigation lights</b>	yes



## EQUIPMENT

Fixed windscreen	yes
Cockpit cover	yes
Cockpit cushions	yes
Cockpit table	yes
Cockpit chairs	yes
Gangway	yes
Anchor	CQR Plough
Anchor chain	yes
Anchor 2	CQR Plough
Anchor chain	yes
Windlass	electrical
Deck wash	yes
Sea railing	wire
Railing side opening gates	yes
Pulpit	yes
Clearview window	2x
Horn	electric
Radio	Fusion MS-RA70
Cockpit speakers	yes
Speakers in salon	yes
Clock - barometer	yes

## RIGGING

Rigging	ketch
Standing rigging	wire 2019
Brand mast	Sparlight
Material mast	aluminium Repainted in 2019
Spreaders	yes
Mainsail	yes
Mainsail cover	yes



<b>Jib</b>	yes
<b>Genoa</b>	yes
<b>Spinnaker</b>	2x
<b>Reefing System</b>	slabreefing
<b>Backstay adjuster</b>	tackle
<b>Boomvang</b>	mechanical
<b>Primary sheet winch</b>	Lewmar
<b>Genoa sheetwinches</b>	Lewmar
<b>Halyard winches</b>	Lewmar
<b>Spi-pole</b>	aluminium Repainted 2019





# JONGERT 16M



# JONGERT 16M



# JONGERT 16M



# JONGERT 16M



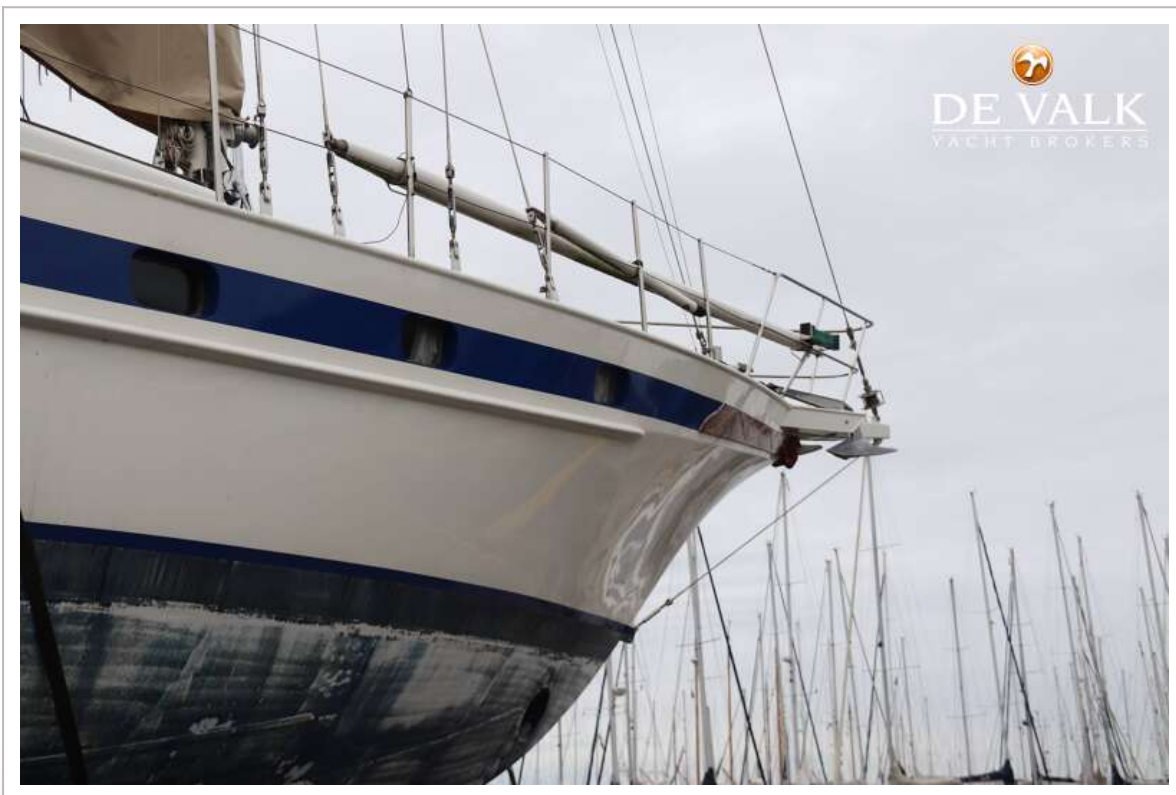
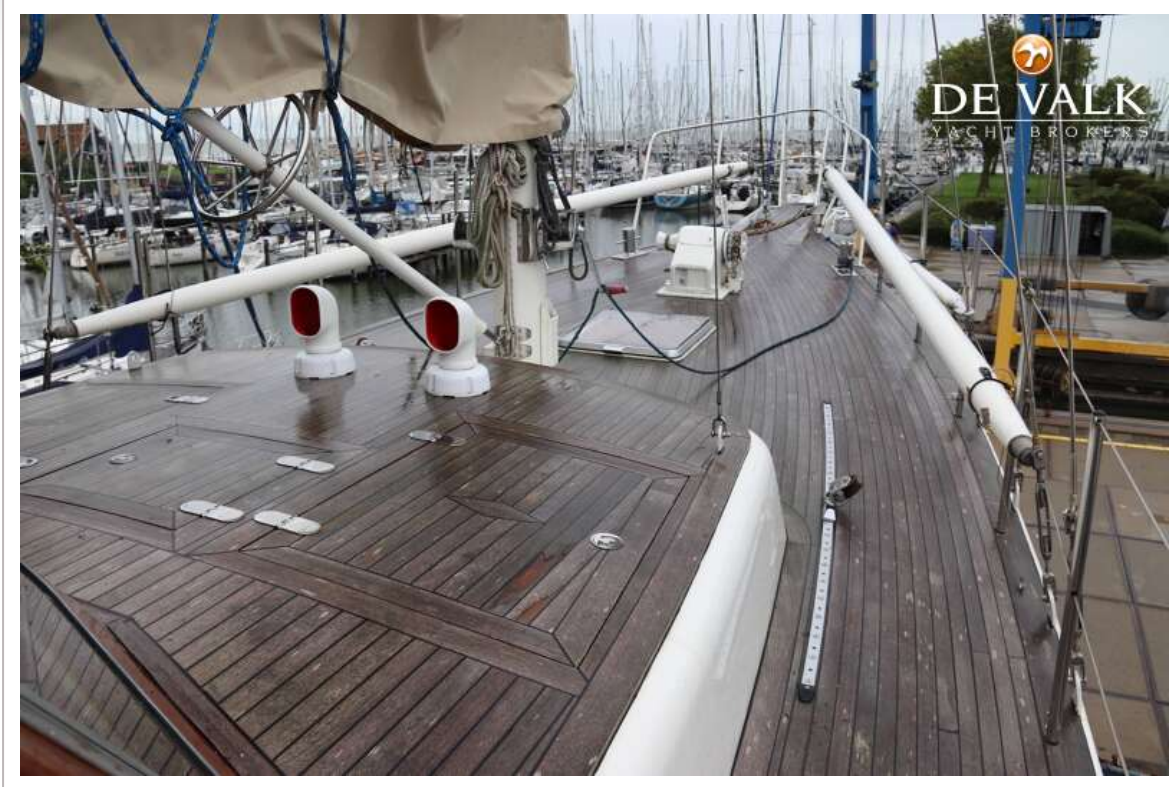
# JONGERT 16M



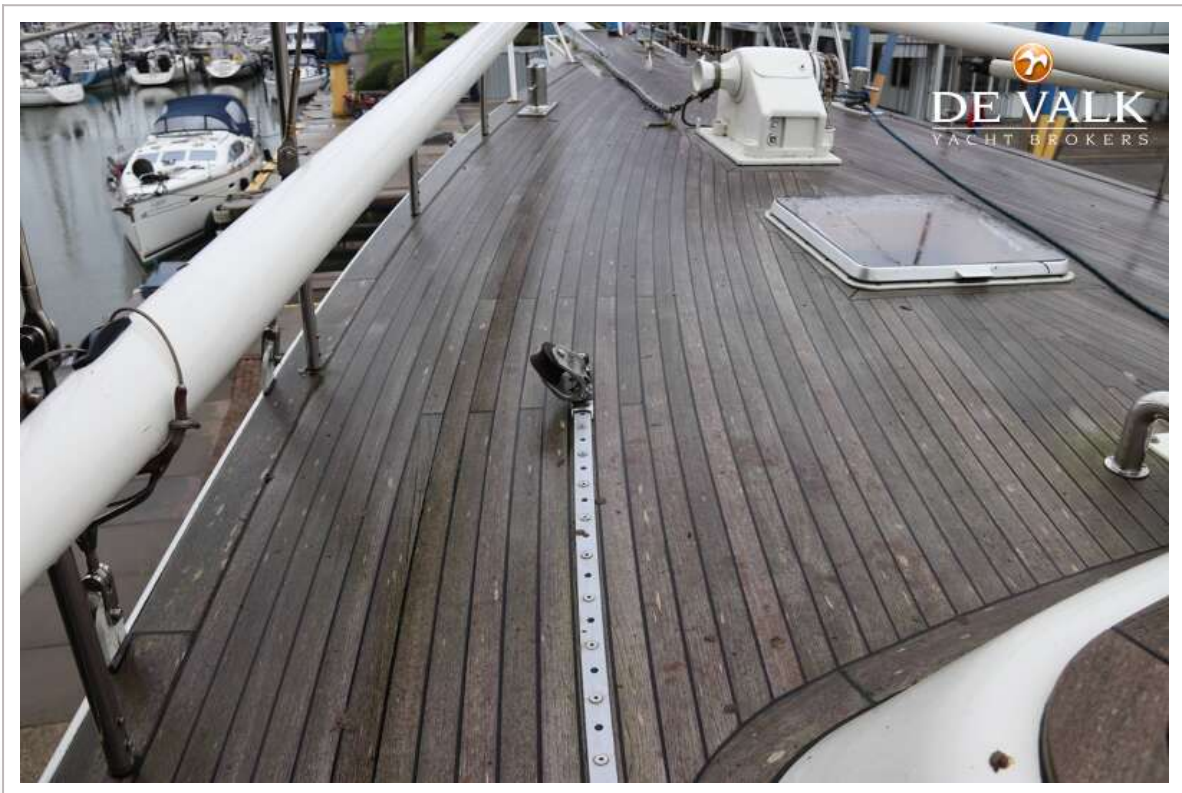
# JONGERT 16M



# JONGERT 16M

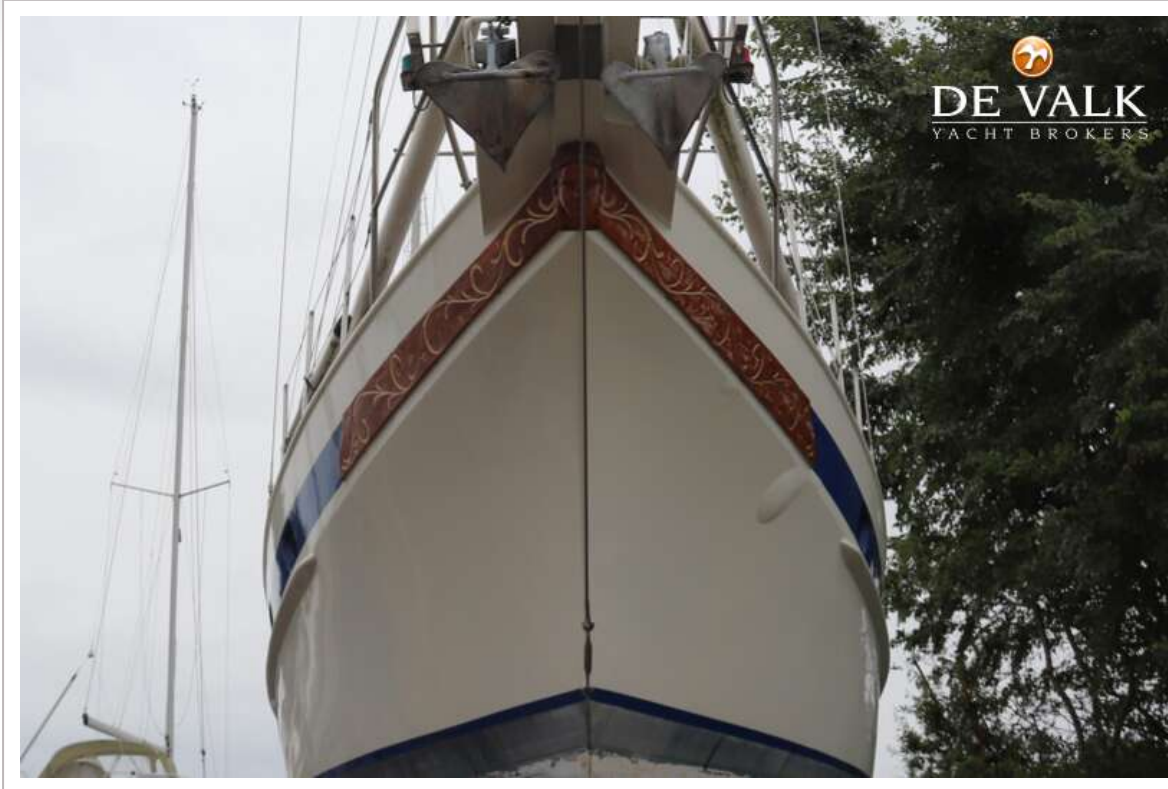


# JONGERT 16M





# JONGERT 16M



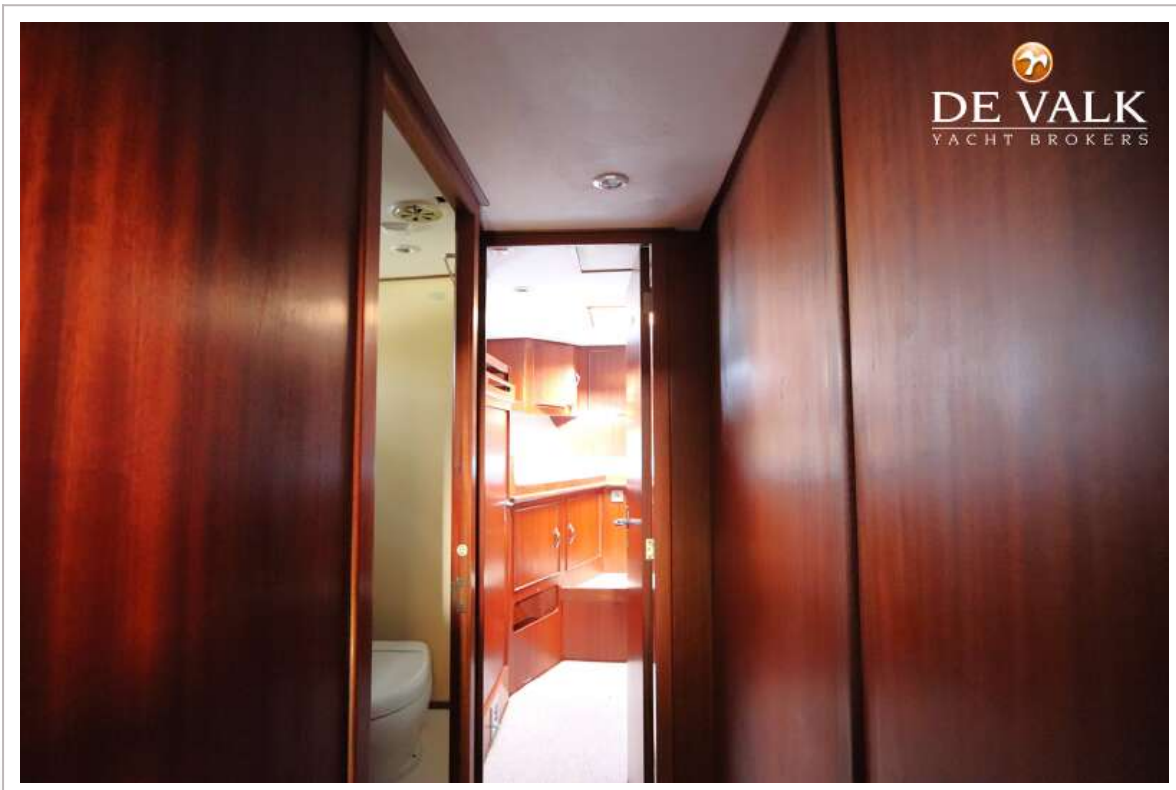
# JONGERT 16M



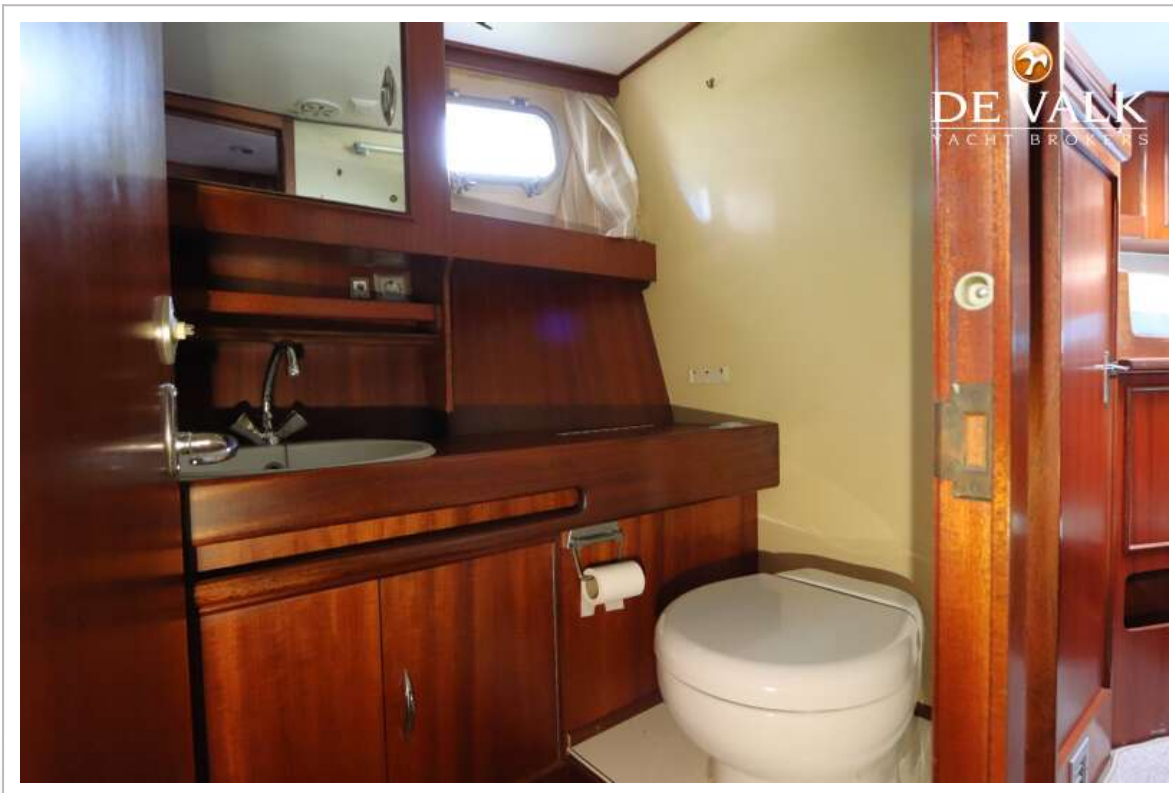
# JONGERT 16M



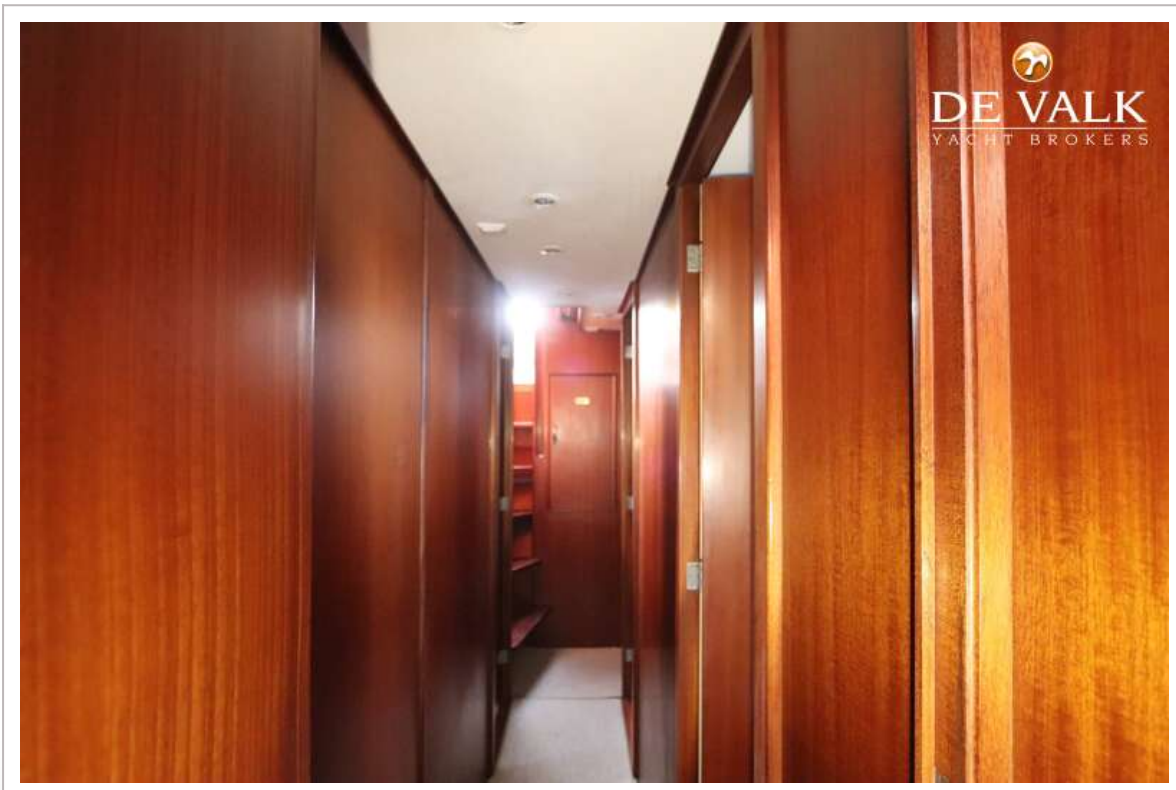
# JONGERT 16M



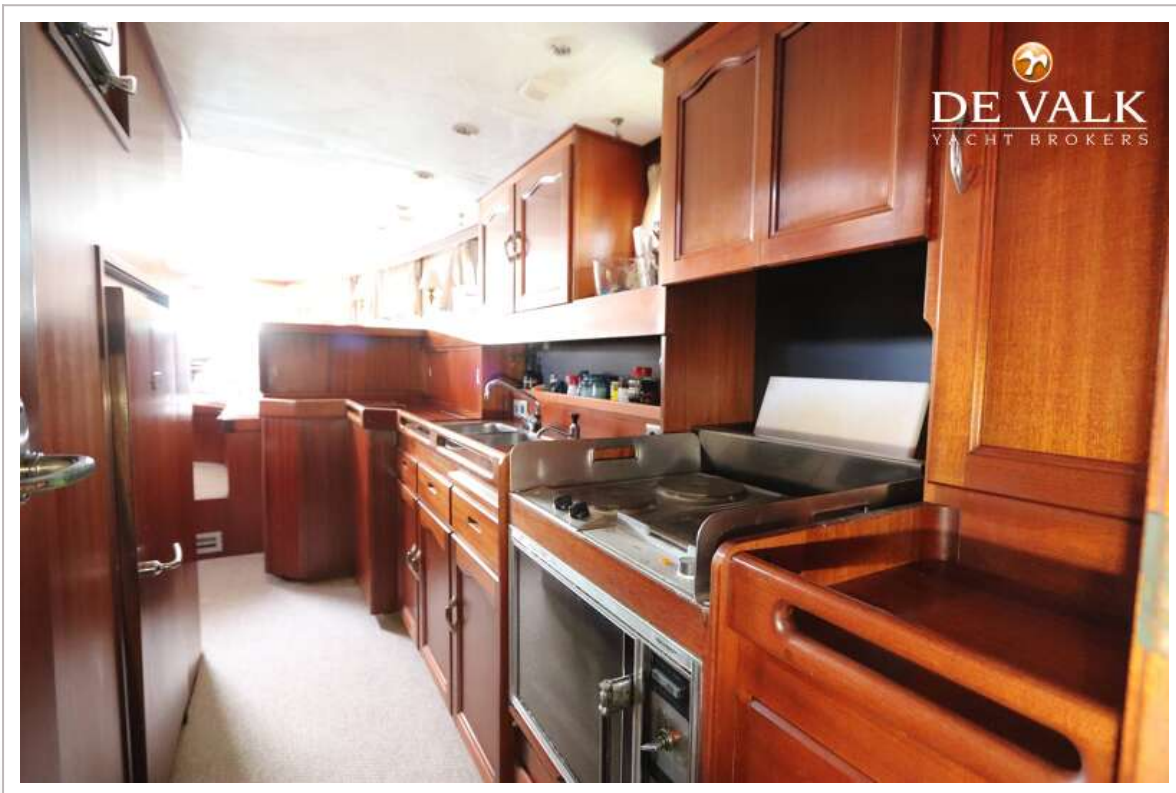
# JONGERT 16M



# JONGERT 16M



# JONGERT 16M

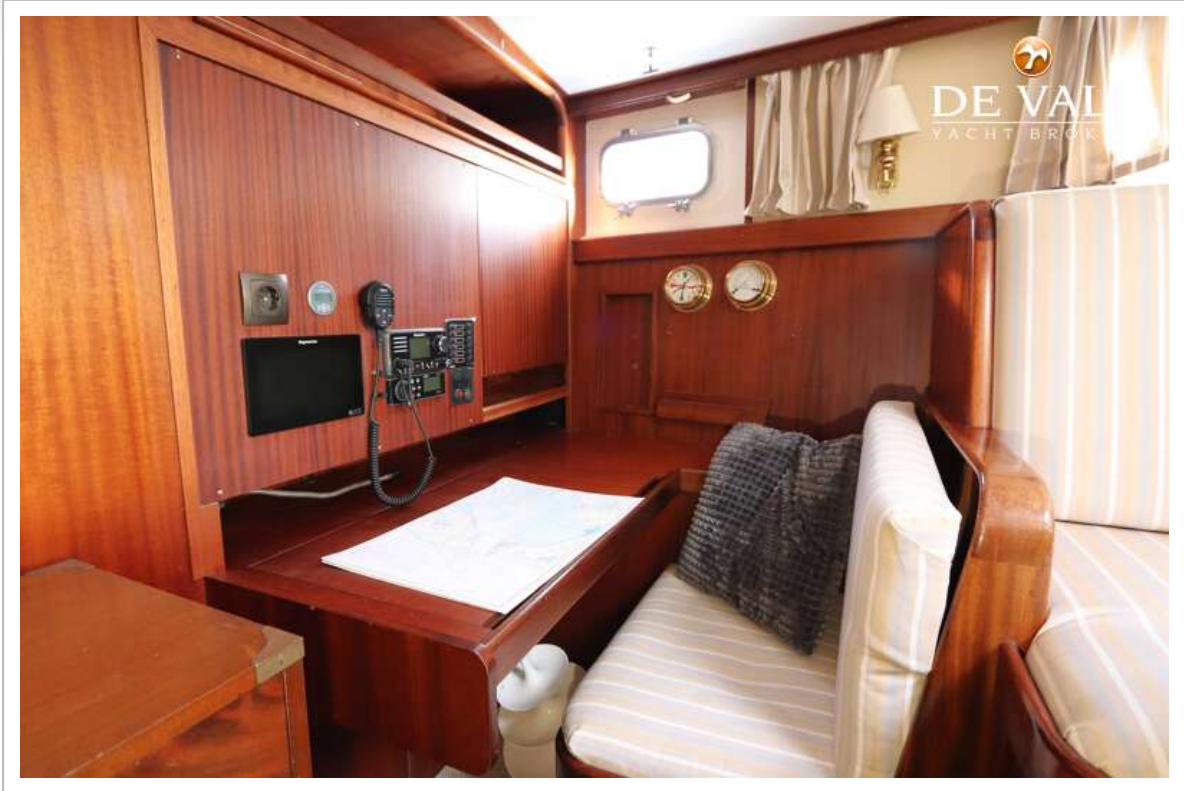


# JONGERT 16M





# JONGERT 16M



# JONGERT 16M



# JONGERT 16M



