



DE VALK  
YACHT BROKERS



## VRI-JON CONTESSA 37E



DE VALK  
YACHT BROKERS

## BROKER'S COMMENTS

The Vri-jon 37E Contessa is an ideal vessel for sailing inland waterways in Europe. For 37 feet, the ship offers a surprising interior space. In the back a large owner's cabin, in the front, right next to the kitchen, a cozy dining area for the dark evenings. The owner owns the Vri-jon almost from the beginning and has always taken good care of her. Equipped with bow and stern thruster, inverter and washing machine.

*Arjen Hoeksma*

## SPECIFICATIONS

<b>Dimensions</b>	11.20 x 3.80 x 1.20 (m)	<b>Builder</b>	Vri-Jon Ossenzijl
<b>Built</b>	1998	<b>Cabins</b>	1
<b>Material</b>	Steel	<b>Berths</b>	4
<b>Engine(s)</b>	1 x Yanmar 4LH-HTE 145 diesel	<b>Hp/Kw</b>	145.00 (hp), 106.58 (kw)
<b>Asking price</b>	sold (VAT )	<b>Lying</b>	at sales office

## CONTACT

<b>Sales office</b>	De Valk Loosdrecht	<b>Telephone</b>	+31 35 582 90 30
<b>Address</b>	't Breukeleveense Meentje 6 1231 LM Loosdrecht / Wijdmeren The Netherlands	<b>E-mail</b>	loosdrecht@devalk.nl

## DISCLAIMER

These particulars are given in good faith as supplied but cannot be guaranteed.



## GENERAL

<b>Model</b>	VRI-JON CONTESSA 37E
<b>Type</b>	motor yacht
<b>LOA (m)</b>	11,20
<b>Beam (m)</b>	3,80
<b>Draft (m)</b>	1,20
<b>Year built</b>	1998
<b>Builder</b>	Vri-Jon Ossenzijl
<b>Country</b>	The Netherlands
<b>Designer</b>	Vri-Jon Yachts
<b>Displacement (t)</b>	12
<b>CE norm</b>	C
<b>Hull material</b>	steel
<b>Hull colour</b>	white
<b>Hull shape</b>	hard chine
<b>Rubbing strake</b>	stainless steel
<b>Deck material</b>	steel
<b>Deck finish</b>	teak
<b>Cockpit deck finish</b>	teak
<b>Window frame</b>	aluminium With mosquito screens
<b>Window material</b>	glass
<b>Deckhatch</b>	yes
<b>Radar arch</b>	collapsible
<b>Fuel tank (litre)</b>	stainless steel 500
<b>Level indicator (fuel tank)</b>	yes
<b>Freshwater tank (litre)</b>	stainless steel 500
<b>Blackwater tank (litre)</b>	GRP 250
<b>Wheel steering</b>	hydraulic
<b>Outside helm position</b>	

## ACCOMMODATION



# VRI-JON CONTESSA 37E

<b>Cabins</b>	1
<b>Berths</b>	4
<b>Interior</b>	teak
<b>Floor</b>	carpet
<b>Aft deck</b>	yes
<b>Saloon</b>	yes
<b>Heating</b>	diesel ducted hot air Eberspracher
<b>Dinette to convert into berth</b>	yes
<b>Galley</b>	yes
<b>Countertop</b>	corian
<b>Sink</b>	stainless steel
<b>Cooker</b>	calor gas Spinflo 4 burners
<b>Microwave</b>	Tomado
<b>Fridge</b>	Dometic
<b>Freezer</b>	yes
<b>Hot water system</b>	220V + engine
<b>Kettle</b>	yes
<b>Owners cabin</b>	French bed
<b>Wardrobe</b>	hanging/drawers/shelves
<b>Bathroom</b>	en suite
<b>Toilet</b>	en suite Vetus
<b>Toilet system</b>	electric
<b>Wash basin</b>	at the toilet
<b>Shower</b>	en suite
<b>Washing machine</b>	Candy

## MACHINERY

<b>No of engines</b>	1
<b>Make</b>	Yanmar
<b>Type</b>	4LH-HTE 145
<b>HP</b>	145



<b>kW</b>	106,58
<b>Fuel</b>	diesel
<b>Maximum speed (kn)</b>	7
<b>Engine hours</b>	2639
<b>Engine cooling system</b>	freshwater heat exchanger
<b>Drive</b>	shaft
<b>Engine controls</b>	bowden cable
<b>Gearbox</b>	hydraulic
<b>Bowthruster</b>	electric Cupa
<b>Sternthruster</b>	electric Cupa
<b>Exhaust</b>	watercooled
<b>Manual bilge pump</b>	yes
<b>Batteries</b>	2 x 12V 225Ah 2x 24V 225 Ah
<b>Start battery</b>	1x 12V 225 Ah
<b>Service battery</b>	yes
<b>Inverter</b>	Mastervolt Combi 12V/1200W
<b>Battery charger/inverter</b>	Victron Energy 24V 3000W 70A
<b>Shorepower</b>	with cable

## NAVIGATION

<b>Compass</b>	Autohelm
<b>Depth sounder/log</b>	Autohelm Tridata
<b>Windset</b>	Vetus
<b>VHF</b>	Shipmate
<b>Autopilot</b>	Remote control
<b>Rudder angle indicator</b>	Autohelm
<b>Plotter/GPS</b>	Navman
<b>Navigation lights</b>	yes
<b>Loudhailer</b>	Silva S15

## EQUIPMENT



Cockpit cover	yes
Bimini	yes
Cockpit cushions	yes
Cockpit table	yes
Cockpit chairs	yes
Bathing platform	yes
Boarding ladder	stainless steel
Anchor	Bruce 15 KG
Anchor chain	Vetus
Windlass	electrical Vetus
Davits	stainless steel
Davits controls	electrical
Sea railing	stainless steel
Railing side opening gates	yes
Wiper	3X
Horn	electric
Fenders	yes
Spare parts	yes
TV	Akai
Radio	Sony CDX-MP40
Fire extinguisher	yes
Extra info	Sunscreens front window
Extra info	yes



# VRI-JON CONTESSA 37E



# VRI-JON CONTESSA 37E

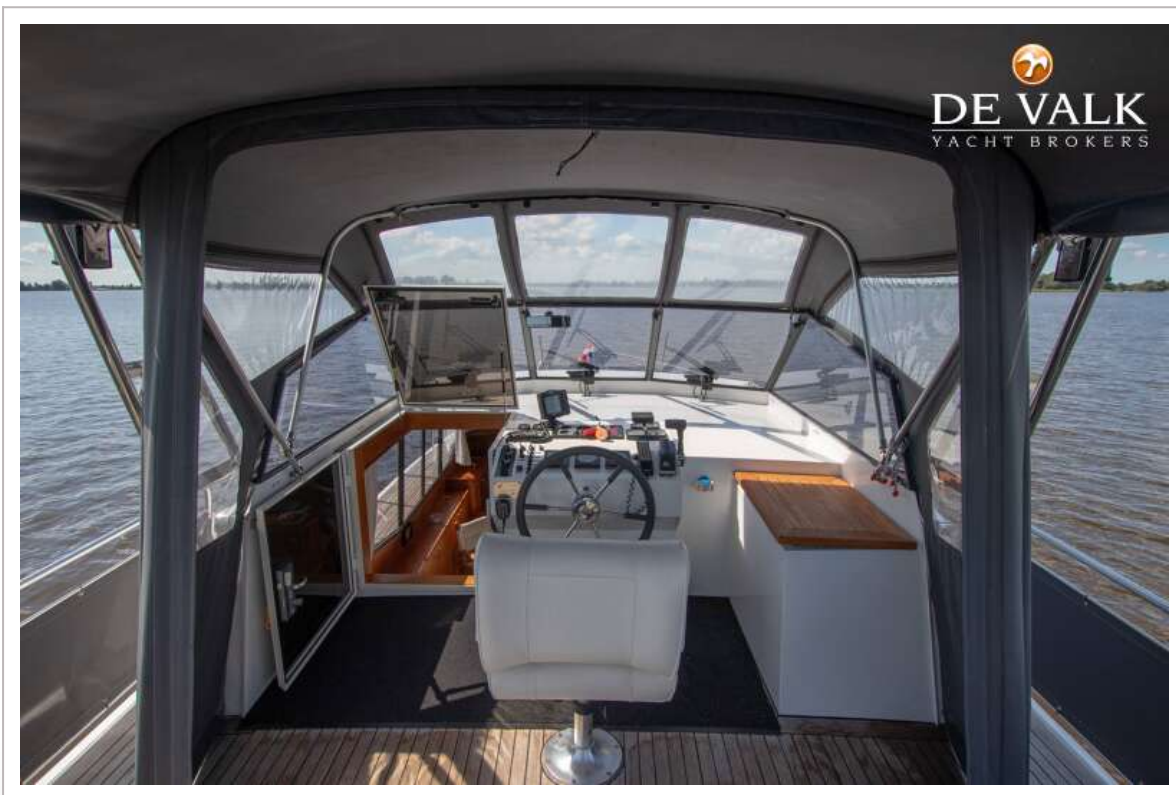




# VRI-JON CONTESSA 37E



# VRI-JON CONTESSA 37E



# VRI-JON CONTESSA 37E



# VRI-JON CONTESSA 37E



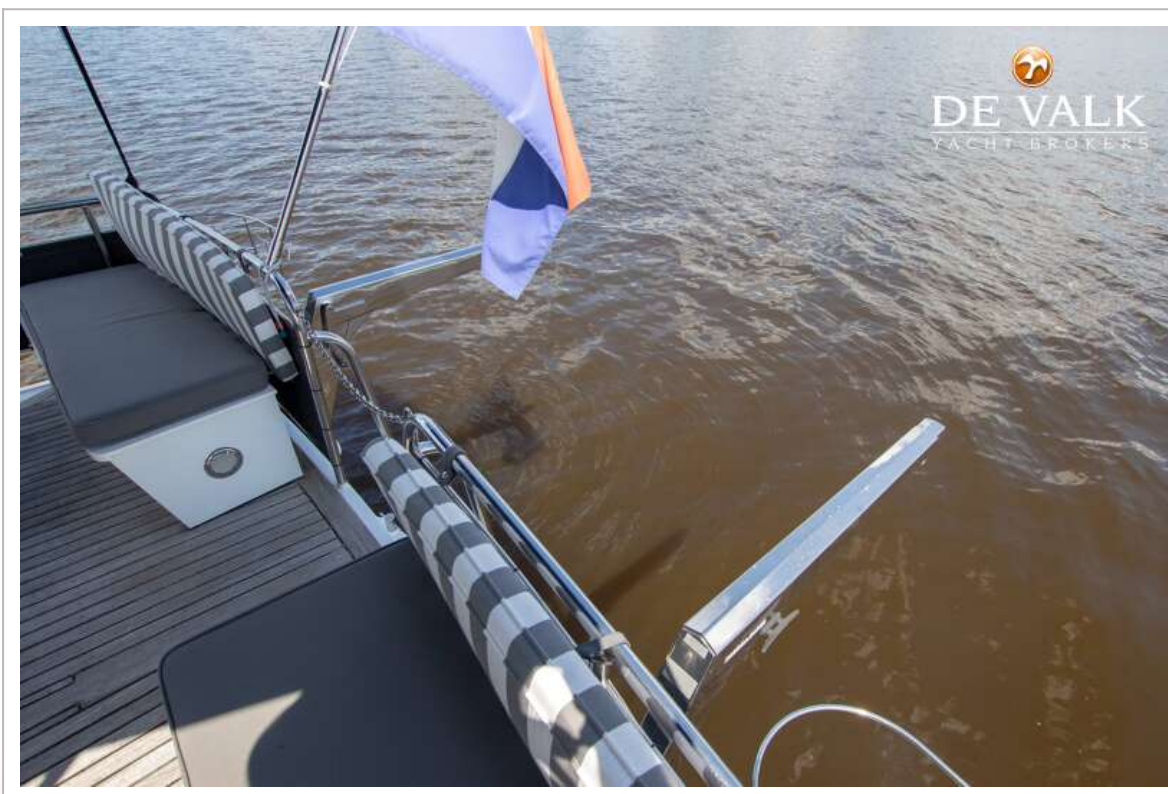
# VRI-JON CONTESSA 37E



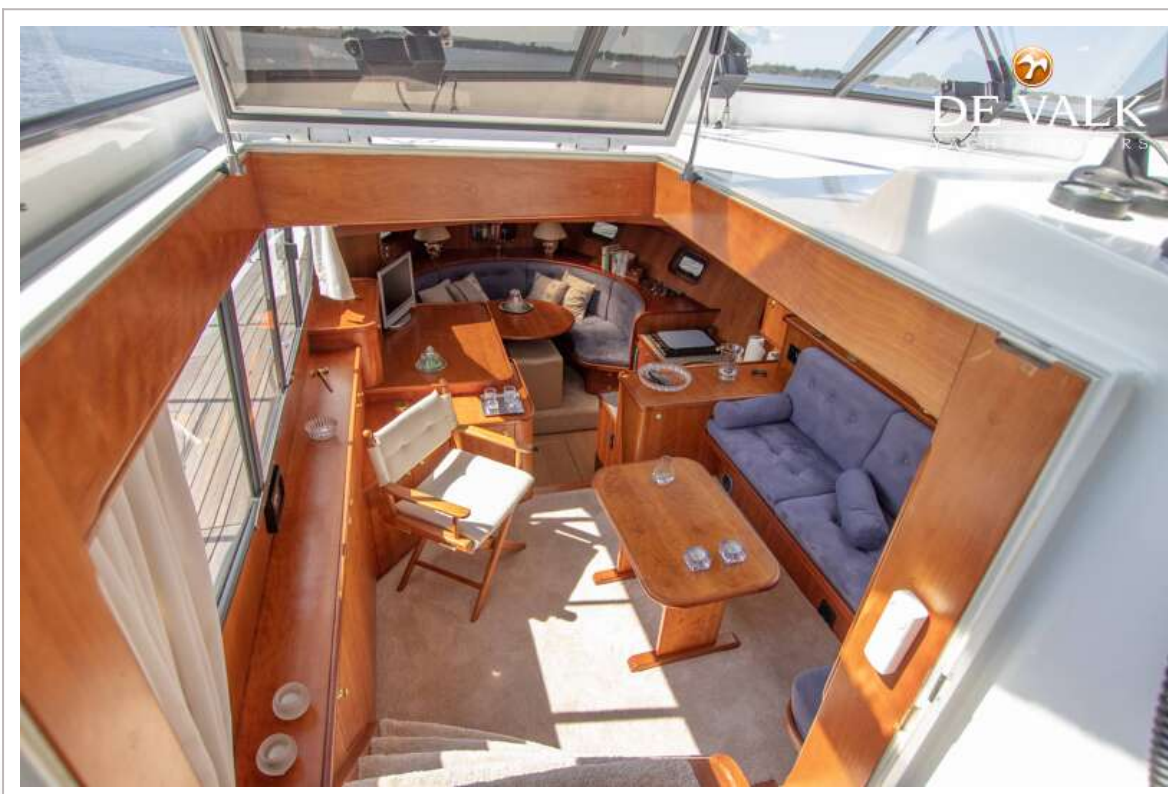
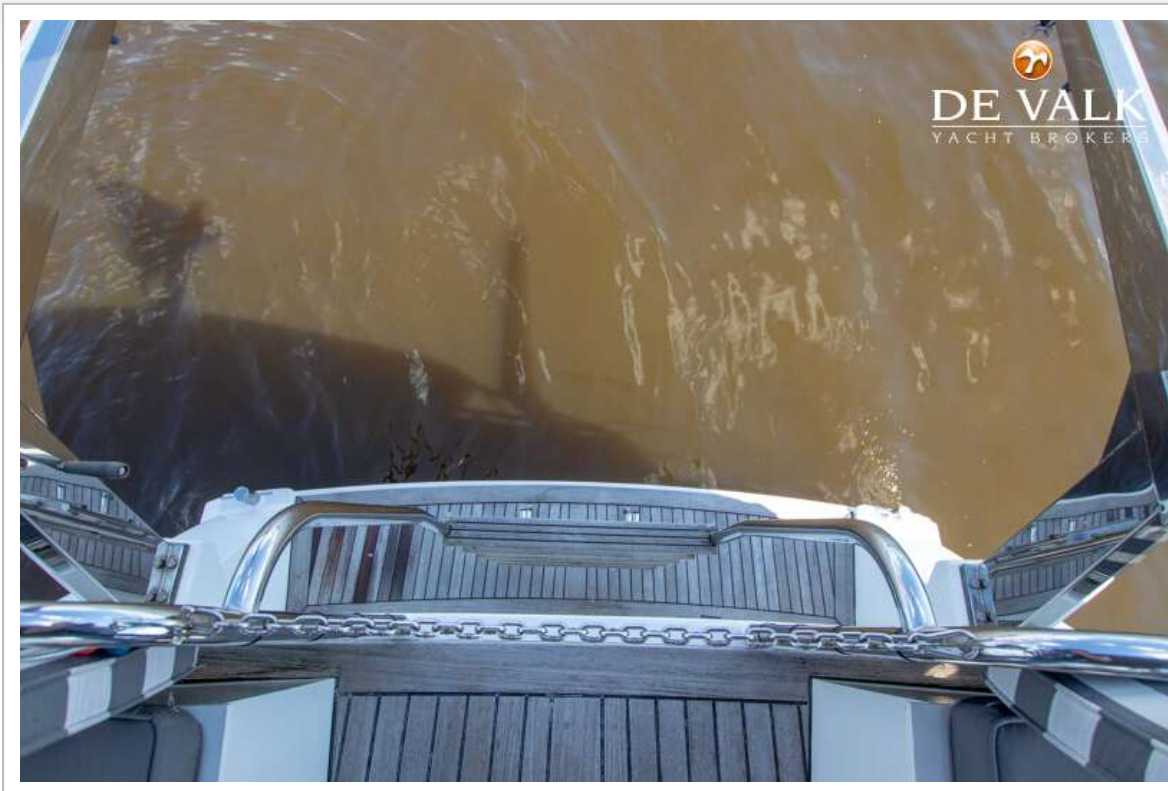
# VRI-JON CONTESSA 37E



# VRI-JON CONTESSA 37E

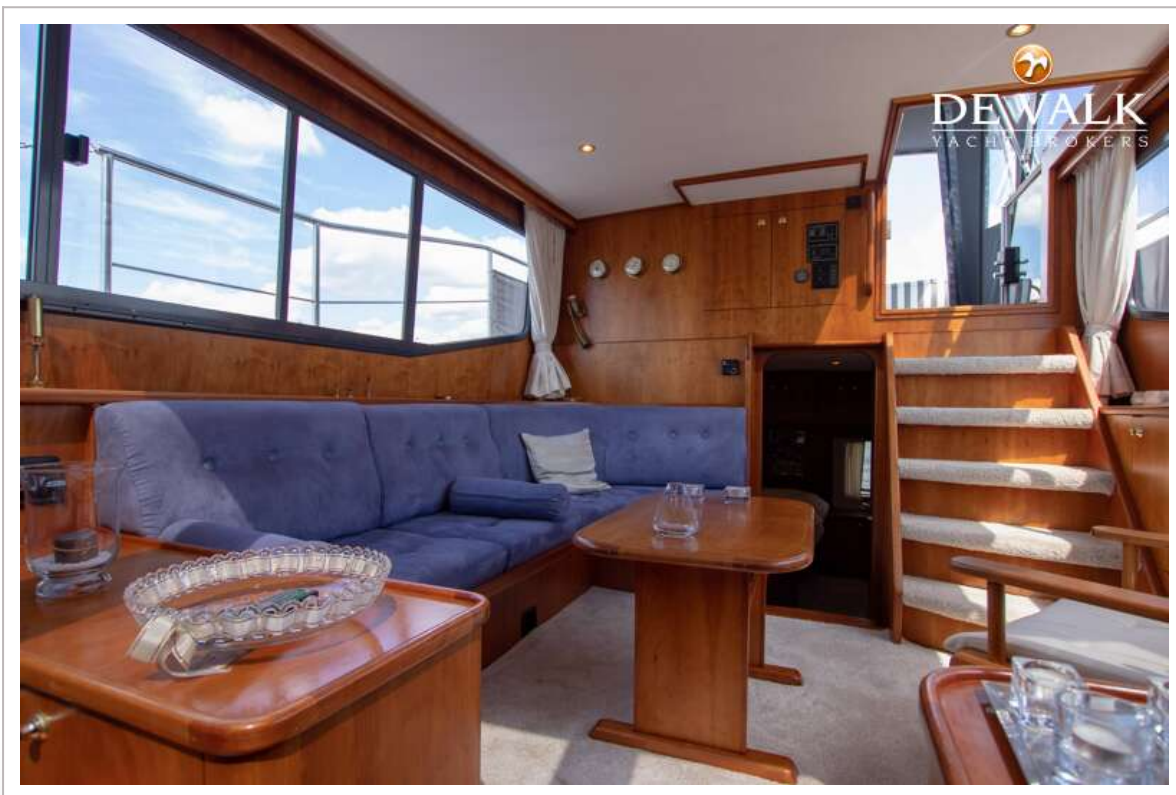


# VRI-JON CONTESSA 37E





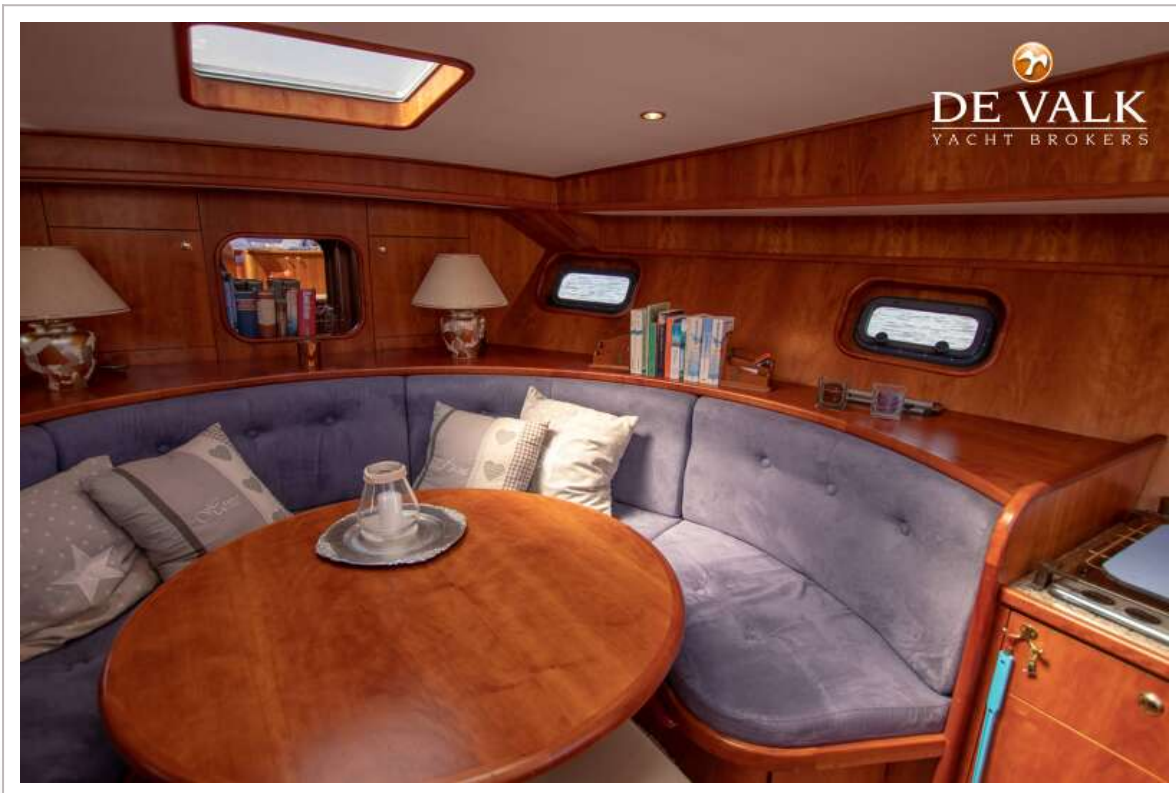
# VRI-JON CONTESSA 37E



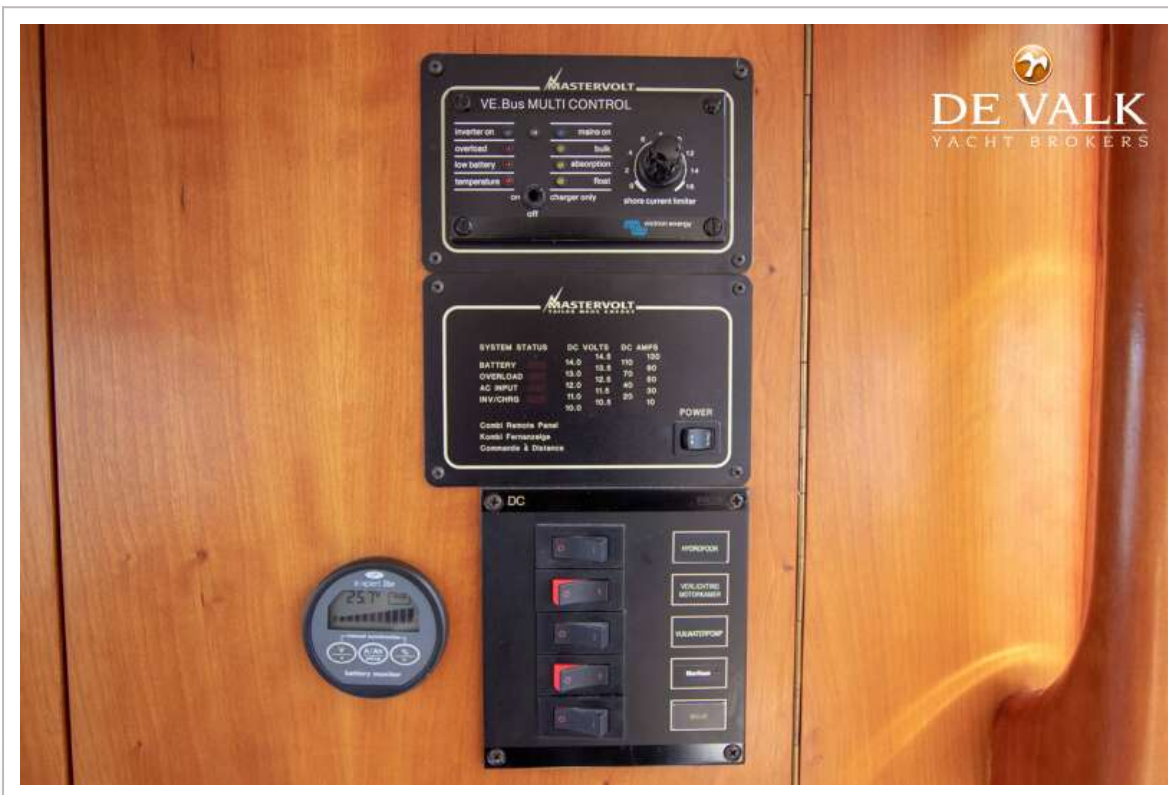
# VRI-JON CONTESSA 37E



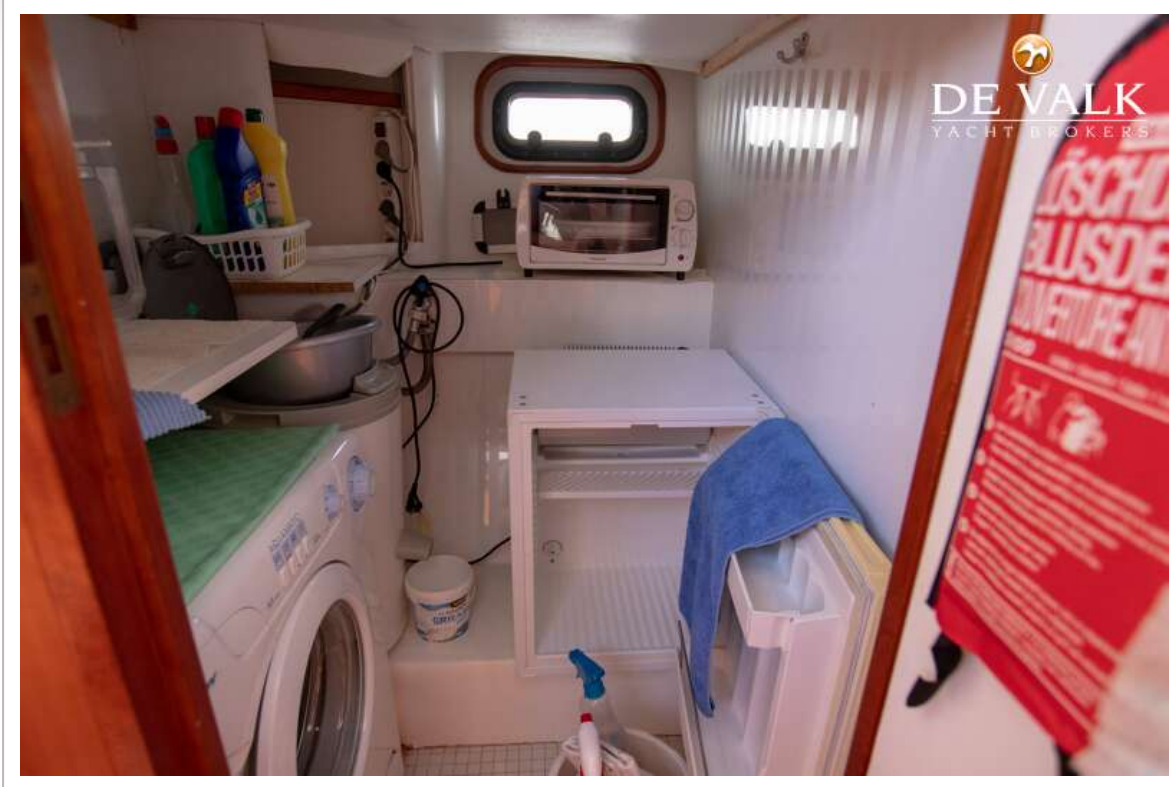
# VRI-JON CONTESSA 37E



# VRI-JON CONTESSA 37E



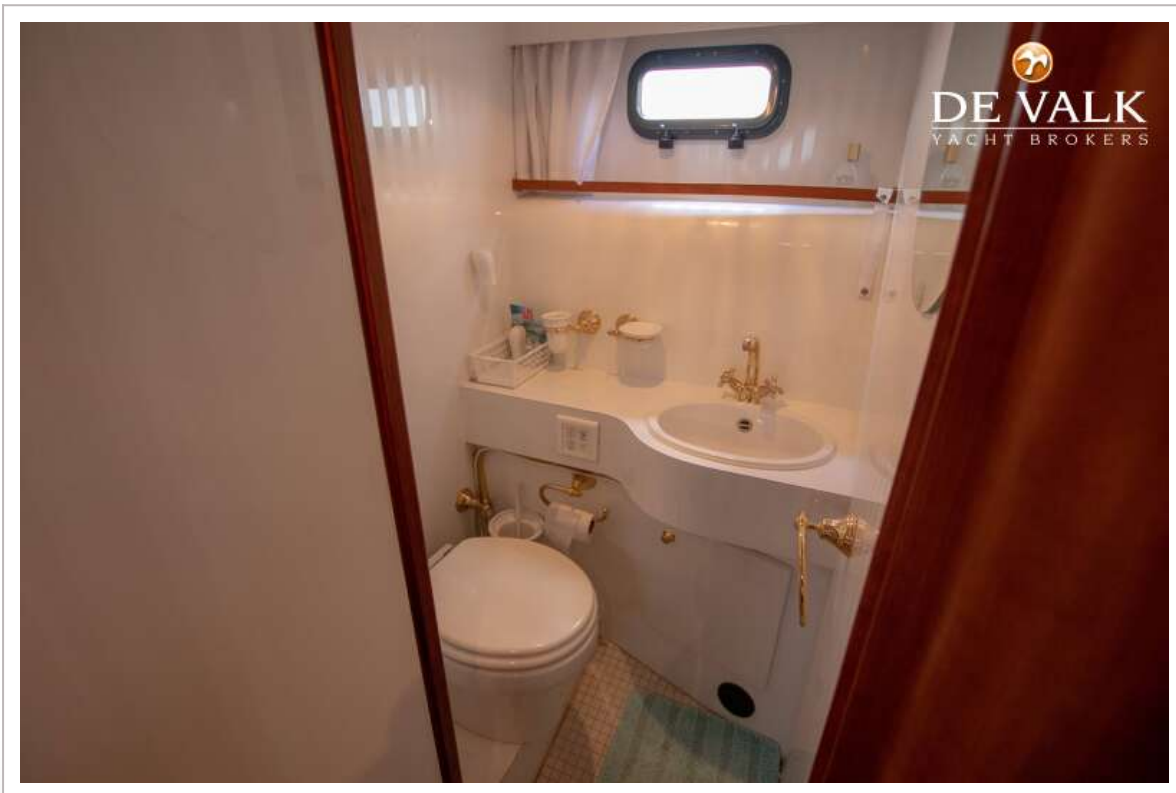
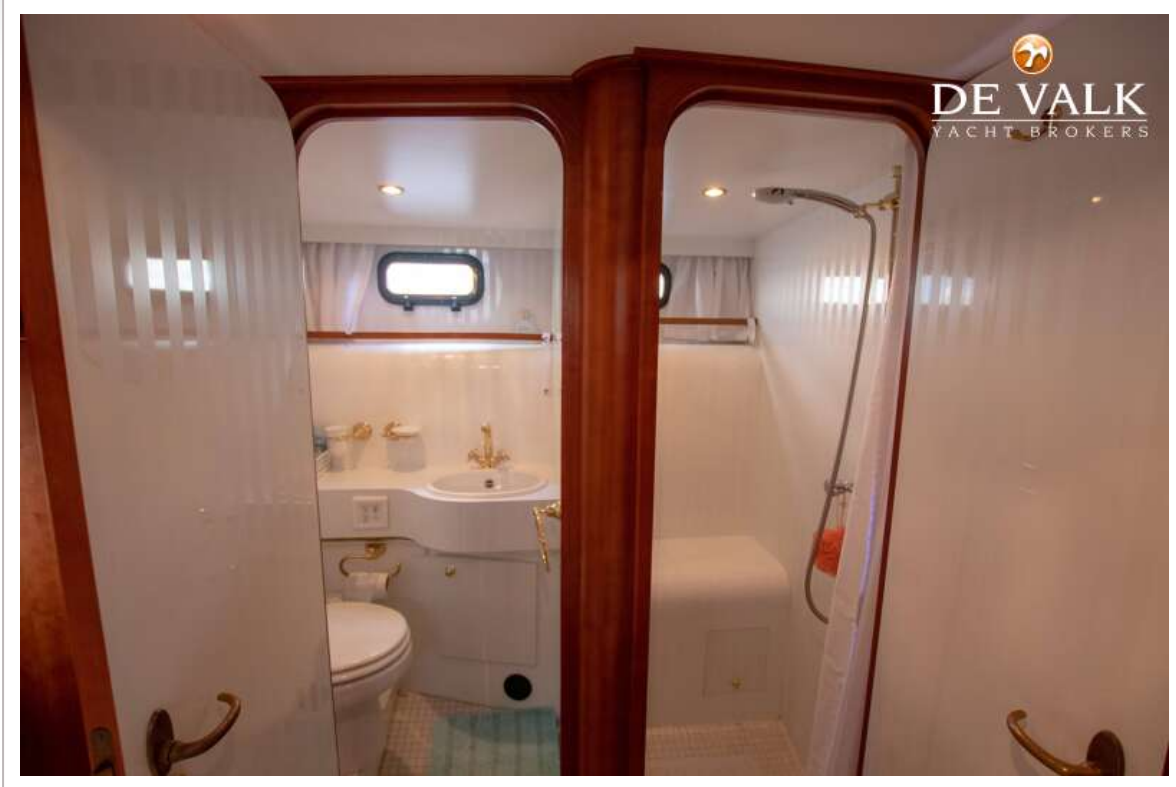
# VRI-JON CONTESSA 37E

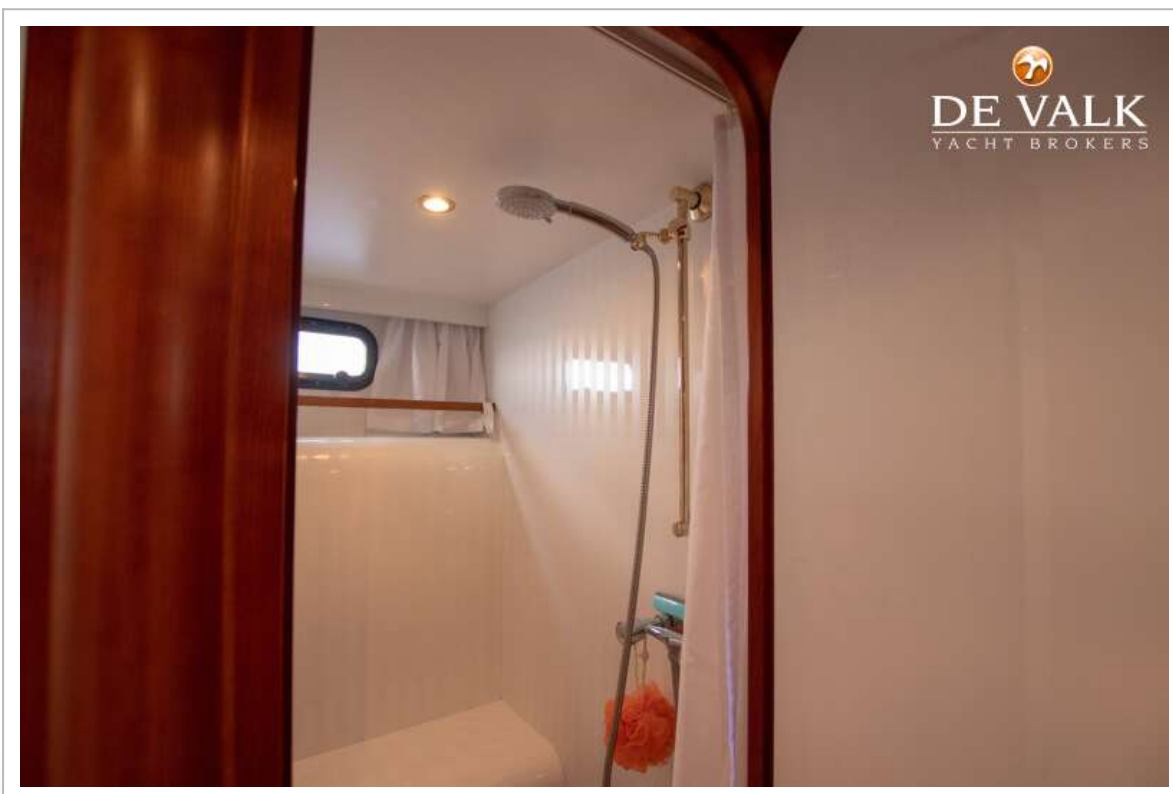


# VRI-JON CONTESSA 37E



# VRI-JON CONTESSA 37E







# VRI-JON CONTESSA 37E

