



DE VALK  
YACHT BROKERS



## HOEK CLASSIC 73FT



DE VALK  
YACHT BROKERS

# HOEK CLASSIC 73FT

## BROKER'S COMMENTS

Introducing the Hoek Truly Classic 73, a masterpiece that seamlessly blends classic design with modern performance. This yacht is a testament to Hoek Design's commitment to creating vessels that stand the test of time. Under sail, the Hoek Truly Classic 73 excels with its powerful rig and efficient sail plan, providing exhilarating performance in a wide range of conditions. Whether cruising leisurely or participating in regattas, this yacht effortlessly captures attention with its speed and agility.

*Hans Visser*

## SPECIFICATIONS

<b>Dimensions</b>	22.31 x 5.03 x 2,95 / 2.30 (m)	<b>Builder</b>	Aluboot Hindeloopen
<b>Built</b>	2003	<b>Cabins</b>	3
<b>Material</b>	Aluminium	<b>Berths</b>	6
<b>Engine(s)</b>	1 x steyer M16-166 diesel	<b>Hp/Kw</b>	165.00 (hp), 121.28 (kw)
<b>Asking price</b>	€ 1.350.000 (VAT Paid)	<b>Lying</b>	at sales office

## CONTACT

<b>Sales office</b>	De Valk Hindeloopen	<b>Telephone</b>	+31 514 52 40 00
<b>Address</b>	Oosterstrand 1 8713 JS Hindeloopen The Netherlands	<b>E-mail</b>	hindeloopen@devalk.nl

## DISCLAIMER

These particulars are given in good faith as supplied but cannot be guaranteed.



# HOEK CLASSIC 73FT

## GENERAL

<b>Model</b>	HOEK CLASSIC 73FT
<b>Type</b>	sailing yacht
<b>LOA (m)</b>	22,31
<b>LWL (m)</b>	14,60
<b>Beam (m)</b>	5,03
<b>Draft (m)</b>	2,30
<b>Draft min (m)</b>	2,95
<b>Air draft (m)</b>	30,00
<b>Year built</b>	2003
<b>Builder</b>	Aluboot Hindeloopen
<b>Country</b>	The Netherlands
<b>Designer</b>	Hoek Design Naval Architect
<b>Displacement (t)</b>	36
<b>Ballast (tonnes)</b>	14 tonnes
<b>CE norm</b>	A
<b>Hull material</b>	aluminium
<b>Hull colour</b>	white
<b>Hull shape</b>	round-bilged
<b>Keel type</b>	lifting keel   with bulb
<b>Superstructure material</b>	aluminium   clad with teak
<b>Deck material</b>	aluminium
<b>Deck finish</b>	teak
<b>Superstructure deck finish</b>	teak
<b>Cockpit deck finish</b>	teak
<b>Dorades</b>	13x stainless steel
<b>Window material</b>	double glazing
<b>Deckhatch</b>	8 skylights
<b>Insulation</b>	foam
<b>Fuel tank (litre)</b>	Approx. 1200 ltr. in two tanks
<b>Level indicator (fuel tank)</b>	One for each tank



# HOEK CLASSIC 73FT

<b>Fuel daytank (litre)</b>	Approx. 60 ltr.
<b>Freshwater tank (litre)</b>	Approx. 1000 ltr. in two tanks
<b>Level indicator (freshwater)</b>	One for each tank
<b>Blackwater tank (litre)</b>	Approx. 80 ltr. in two tanks
<b>Level indicator (blackwater)</b>	One for each tank
<b>Blackwater tank extraction</b>	deck extraction + uw line
<b>Greywater tank (litre)</b>	Approx. 180 ltr. in two tanks
<b>Level indicator (greywater)</b>	One for each tank
<b>Wheel steering</b>	cable steering
<b>Inside helm position</b>	Autopilot remote
<b>Emergency tiller</b>	yes

## ACCOMMODATION

<b>Cabins</b>	3
<b>Berths</b>	6
<b>Crew cabin</b>	yes
<b>Crew berths</b>	2 folding bunks in de fore peak
<b>Interior</b>	cherry
<b>Floor</b>	Oak
<b>Pilot house/deck saloon</b>	yes
<b>Saloon</b>	yes
<b>Headroom saloon (m)</b>	2 mtr.
<b>Heating</b>	diesel ducted hot air   Webasto 9kw
<b>Navigation center</b>	yes
<b>Chart table</b>	yes
<b>Aft Cabin</b>	Two gast cabins
<b>Galley</b>	yes
<b>Countertop</b>	corian
<b>Sink</b>	stainless steel   Double
<b>Cooker</b>	calor gas   Force 10 Marine   4 burner   Truma gasfernschalter
<b>Oven</b>	In cooker



# HOEK CLASSIC 73FT

<b>Extractor</b>	Itho
<b>Microwave</b>	Samsung
<b>Fridge</b>	Waeco 90ltr.
<b>Freezer</b>	Stainless steel custom build
<b>Hot water system</b>	2x 60ltr. boiler
<b>Water pressure system</b>	electrical
<b>Owners cabin</b>	double bed   Forward cabin
<b>Bed length (m)</b>	2 mtr.
<b>Wardrobe</b>	hanging/drawers/shelves
<b>Bathroom</b>	en suite
<b>Toilet</b>	Tecma
<b>Toilet system</b>	electric
<b>Wash basin</b>	yes
<b>Shower</b>	Cabin
<b>Guest cabin 1</b>	double bed   aft cabin
<b>Bed length (m)</b>	2 mtr.
<b>Wardrobe</b>	hanging and drawers
<b>Guest cabin 2</b>	double bed   aft cabin
<b>Bed length (m)</b>	2 mtr.
<b>Wardrobe</b>	hanging and drawers
<b>Bathroom</b>	shared
<b>Toilet</b>	Tecma
<b>Toilet system</b>	electric
<b>Wash basin</b>	yes
<b>Shower</b>	yes
<b>Washing machine</b>	yes

## MACHINERY

<b>No of engines</b>	1
<b>Make</b>	Steyer
<b>Type</b>	M16-166



# HOEK CLASSIC 73FT

<b>HP</b>	165
<b>kW</b>	121.28
<b>Fuel</b>	diesel
<b>Maximum speed (kn)</b>	10
<b>Cruising speed (kn)</b>	8
<b>Engine cooling system</b>	freshwater heat exchanger
<b>Drive</b>	shaft
<b>Gearbox</b>	hydraulic
<b>Bowthruster</b>	hydraulic   Pivoting
<b>Sternthruster</b>	hydraulic   Pivoting
<b>Exhaust</b>	watercooled
<b>Propeller type</b>	feathering
<b>Propeller blades</b>	3
<b>Propeller shaft material</b>	stainless steel   controllable pitch
<b>Manual bilge pump</b>	yes
<b>Electric bilge pump</b>	yes
<b>Bilge alarm</b>	yes
<b>Electrical installation</b>	12 / 24 / 220 volt
<b>Generator</b>	Whisper Power M-GV 4 Piccolo + WP-PMG
<b>Batteries</b>	4x gel G210   420 Amp 24V
<b>Service battery</b>	8x gel G210   840 Amp 24V
<b>Battery charger</b>	Mastervolt Mass 24/100
<b>Inverter</b>	Mastervolt Mass Sine 24/2500
<b>Shorepower</b>	with cable
<b>Insulation transformer</b>	Mastervolt
<b>Watermaker</b>	Spectra Gulfstream 400   60ltr/u

## NAVIGATION

<b>Compass</b>	C.Plath Venus
<b>Depth sounder</b>	Data from: 3x B&G Hydra 2000
<b>Forw. looking depth sounder</b>	EchoPilot



# HOEK CLASSIC 73FT

<b>Log</b>	Data from: 3x B&G Hydra 2000
<b>Windset</b>	Data from: 3x B&G Hydra 2000
<b>VHF</b>	Garmin 315i
<b>Autopilot</b>	B&G Hydra Pilot
<b>Radar</b>	Furuno
<b>GPS</b>	Leica geosystems
<b>Radar/GPS/plotter</b>	Furuno Navnet 1833C
<b>Navtex</b>	Marine radio decoder 80
<b>AIS transponder</b>	FURUNO FA-170 AIS Class A AIS transponder
<b>EPIRB</b>	yes
<b>Navigation lights</b>	yes

## EQUIPMENT

<b>Cockpit cushions</b>	yes
<b>Cockpit table</b>	yes
<b>Boarding ladder</b>	yes
<b>Deck shower</b>	Warm & cold water
<b>Anchor</b>	CQR Plough   70kg stainless steel
<b>Anchor chain</b>	80 mtr. 13mm stainless steel
<b>Windlass</b>	Lewmar Concept 3
<b>Sea railing</b>	yes
<b>Grab rail (superstructure)</b>	teak
<b>Railing side opening gates</b>	yes
<b>Pushpit</b>	yes
<b>Pulpit</b>	yes
<b>Radar reflector</b>	yes
<b>Fenders</b>	yes
<b>Mooring lines</b>	yes
<b>TV</b>	Philips
<b>Radio-cd player</b>	Sony + CD changer
<b>Speakers in salon</b>	yes



Clock - barometer	yes
Fire extinguisher	yes

## RIGGING

Rigging	sloop-cutter
Brand mast	Hallspars
Material mast	aluminium coated
Spreaders	3 pair
Keel stepped mast	yes
Mainsail	2x North Sails   121m <sup>2</sup>
Furling boom	Marten Marine
Genoa	North Sails   new 2015
Genoa furler	Rondal hydraulic
Staysail	North Sails 44m <sup>2</sup>
Staysail furler	Rondal hydraulic
Reefing System	main in-boom furling   Marten Marine   Leisure furl - Hydraulic
Backstay adjuster	hydraulic Navtec
Boomvang	hydraulic Navtec
Primary sheet winch	1x Lewmar 58 - main sheet   Electric
Secondary sheet winch	2x Lewmar 66   Electric
Genoa sheetwinches	2x Lewmar 77   Electric
Halyard winches	2x Lewmar 54 - deck winches   Electric





# HOEK CLASSIC 73FT

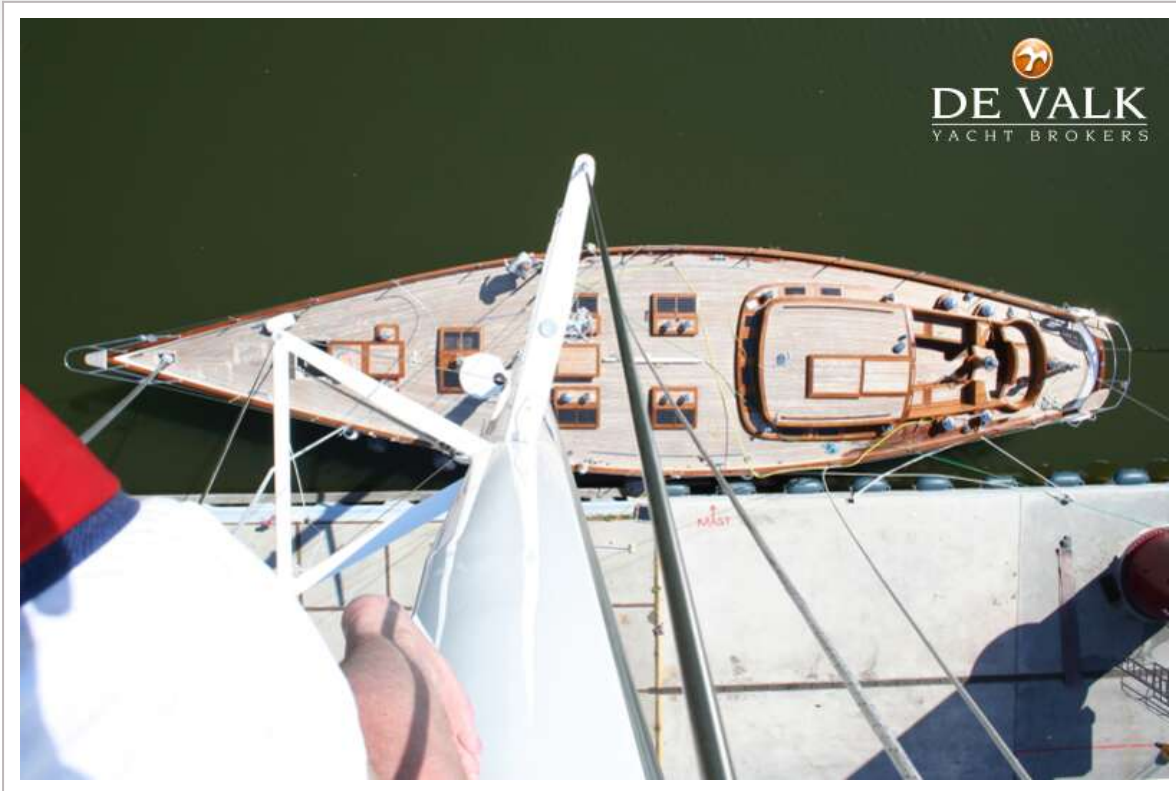


# HOEK CLASSIC 73FT





# HOEK CLASSIC 73FT

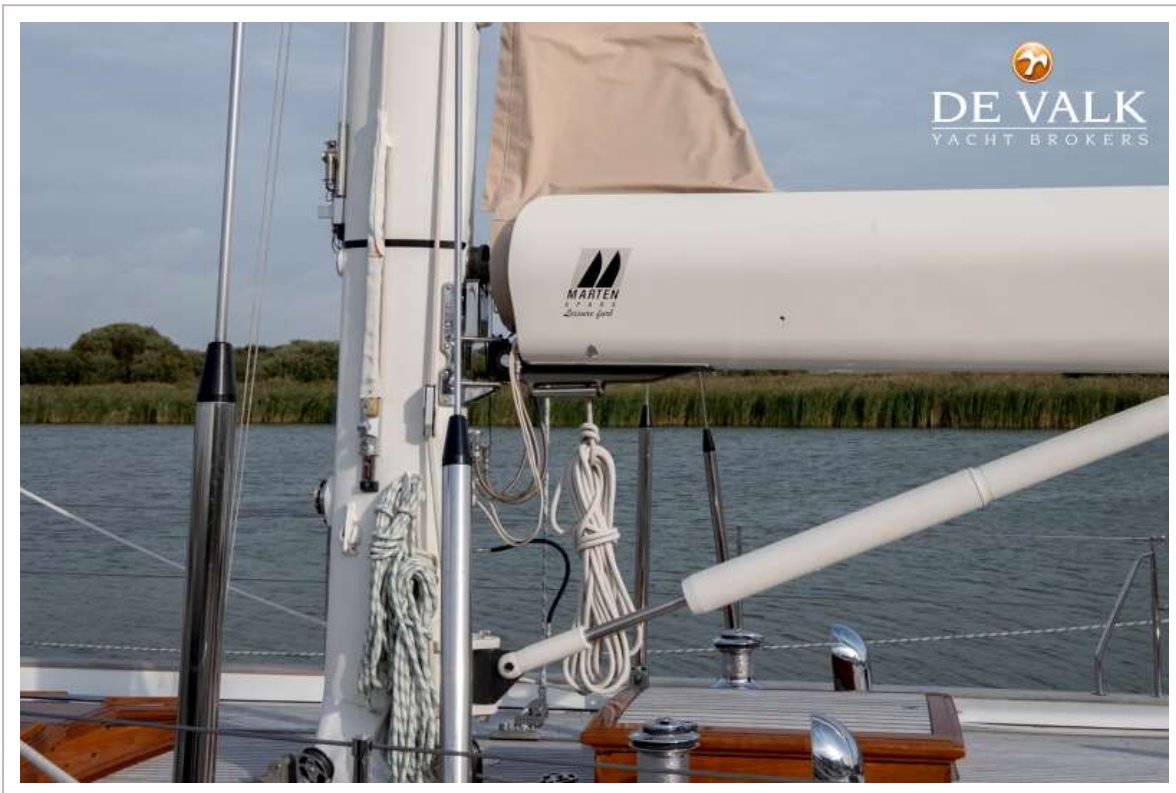


# HOEK CLASSIC 73FT

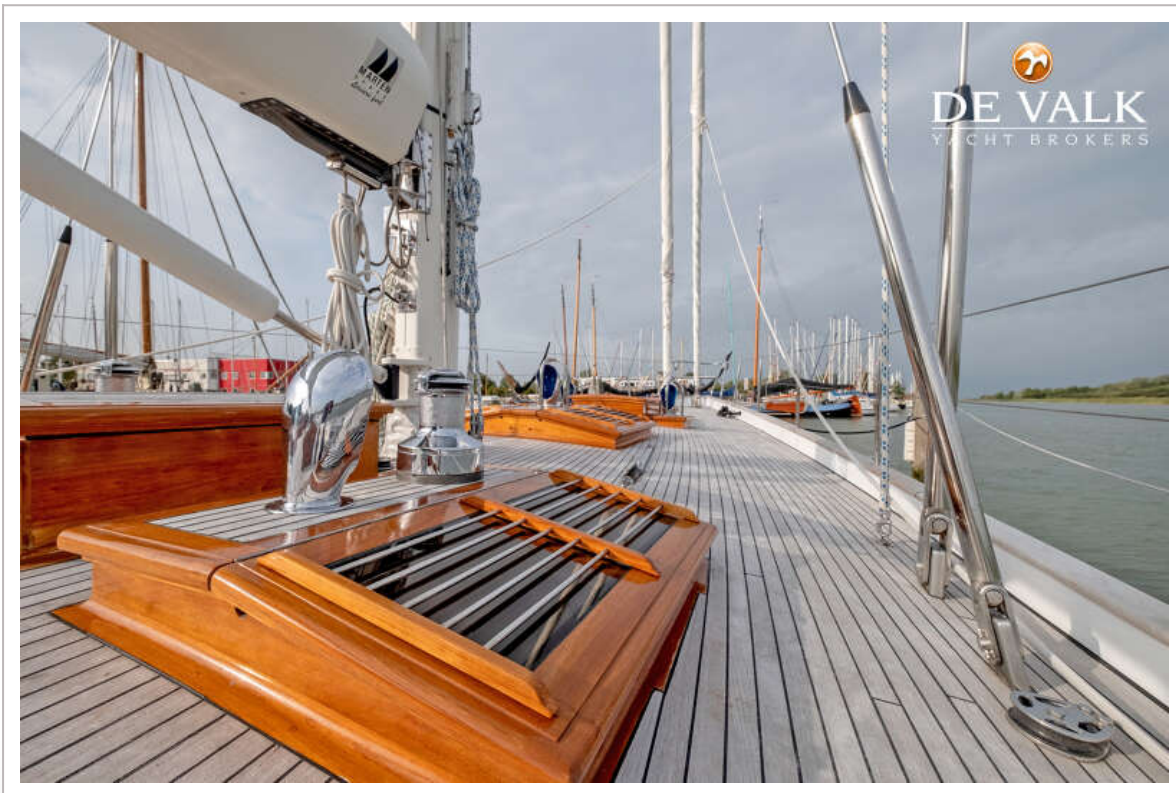




# HOEK CLASSIC 73FT

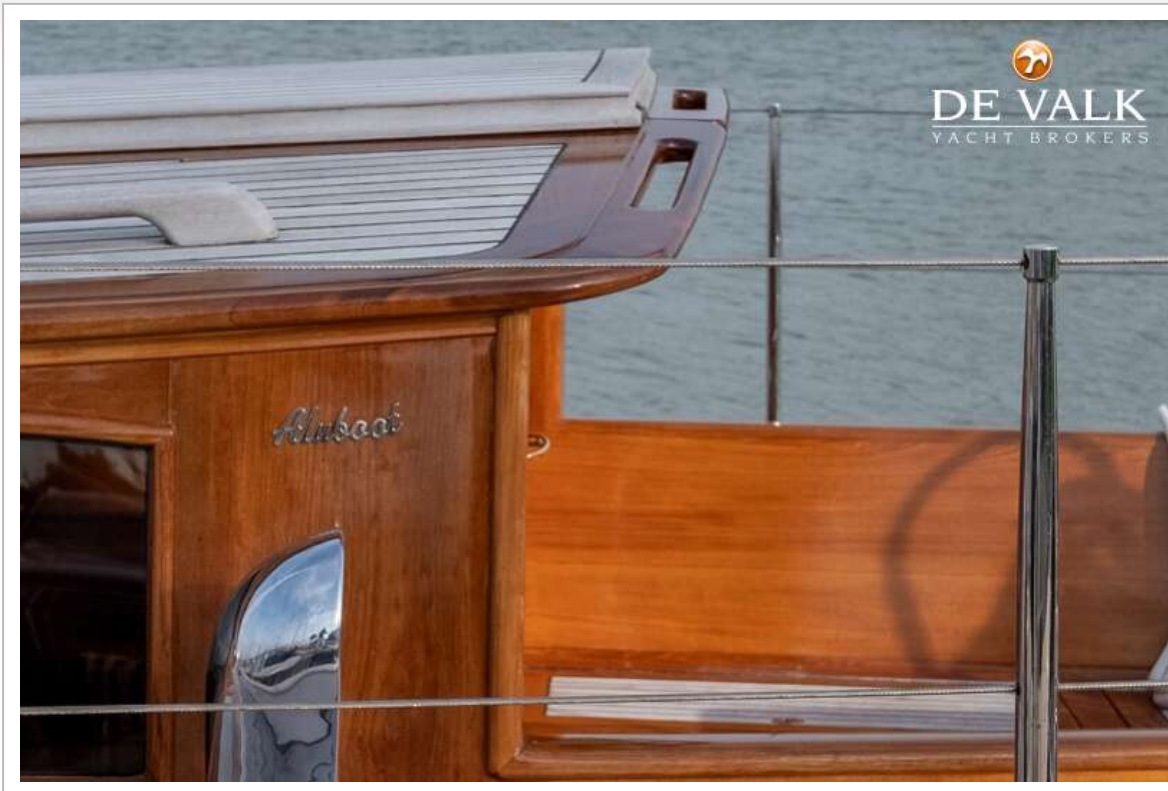


# HOEK CLASSIC 73FT





# HOEK CLASSIC 73FT





# HOEK CLASSIC 73FT

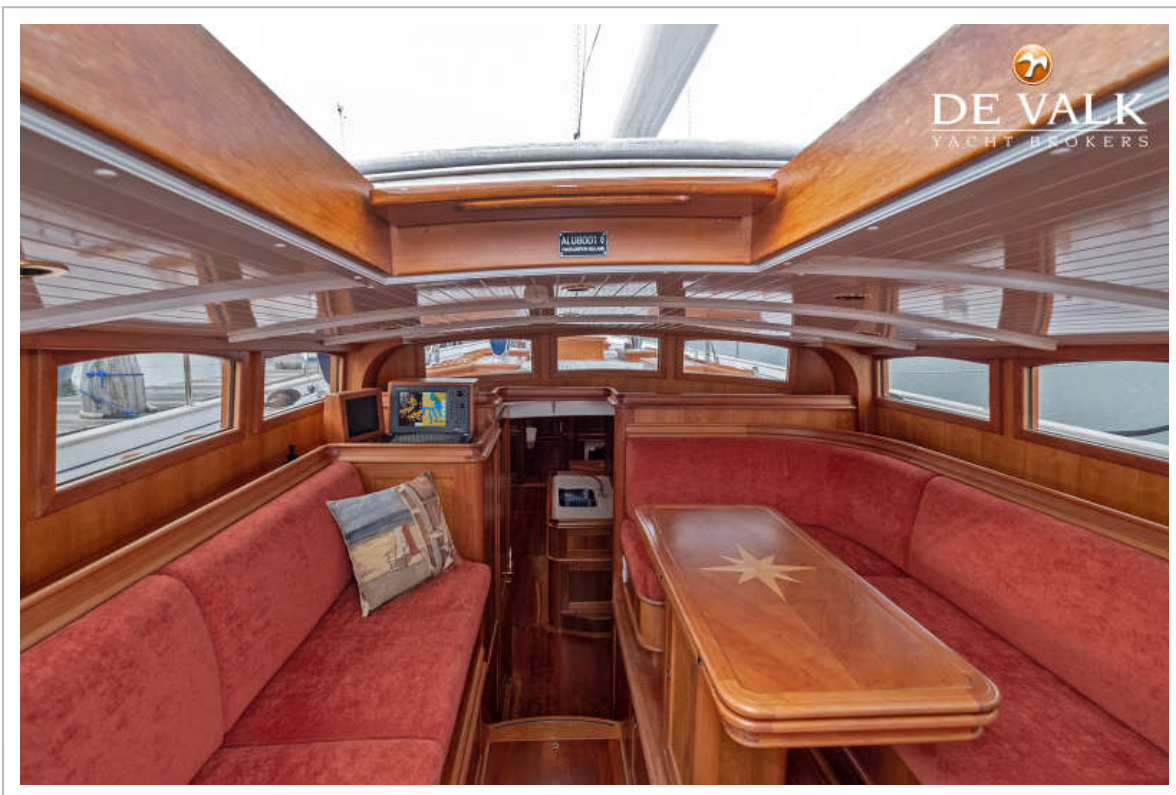




# HOEK CLASSIC 73FT

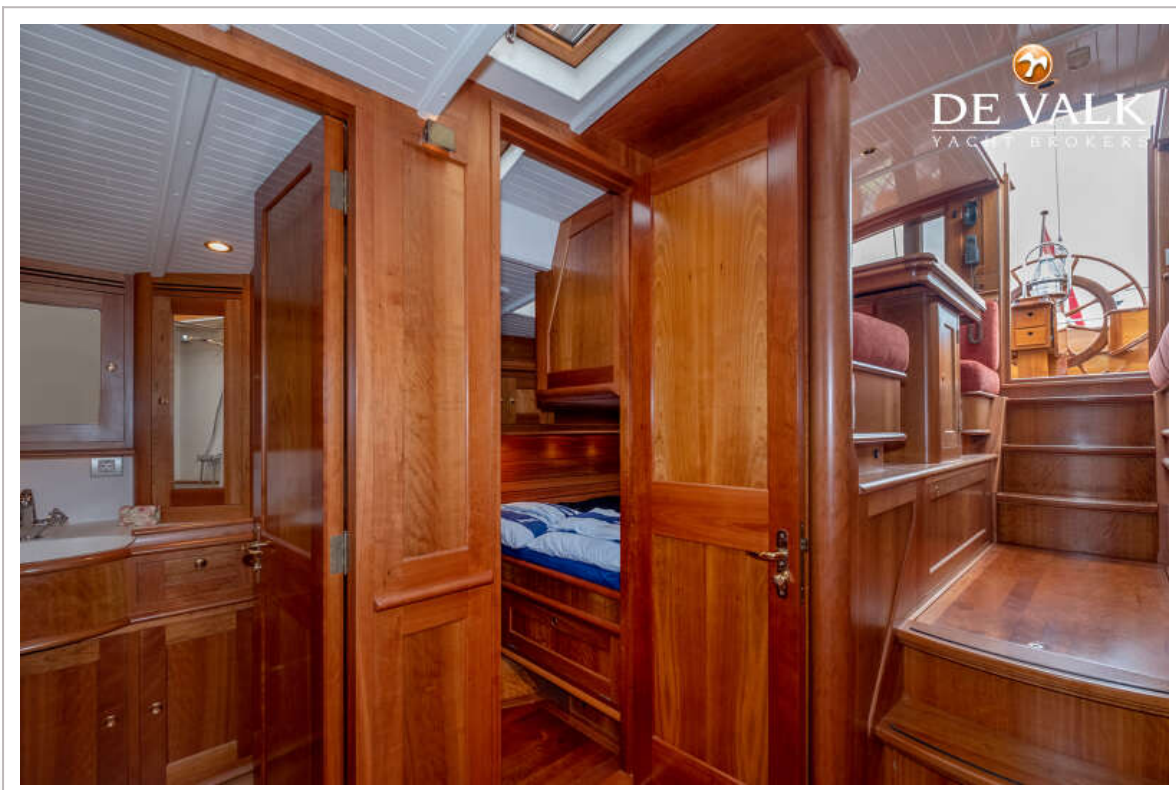


# HOEK CLASSIC 73FT

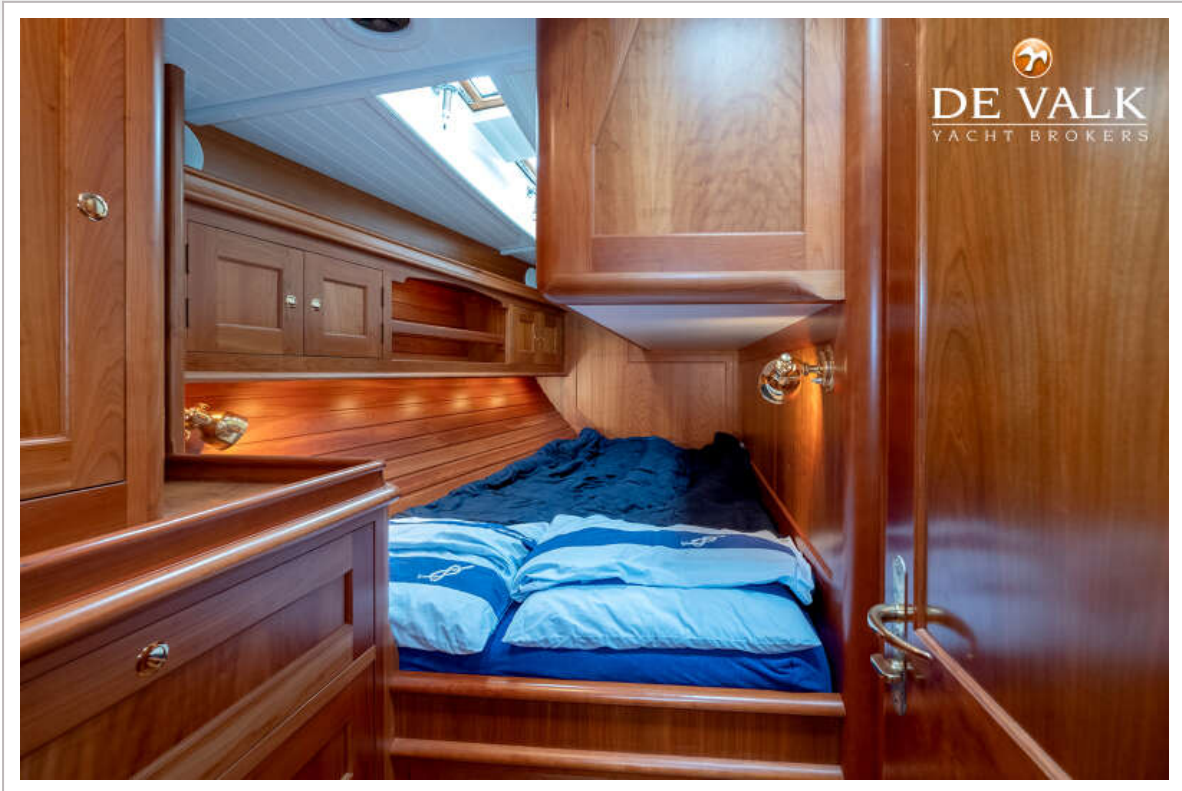




# HOEK CLASSIC 73FT



# HOEK CLASSIC 73FT

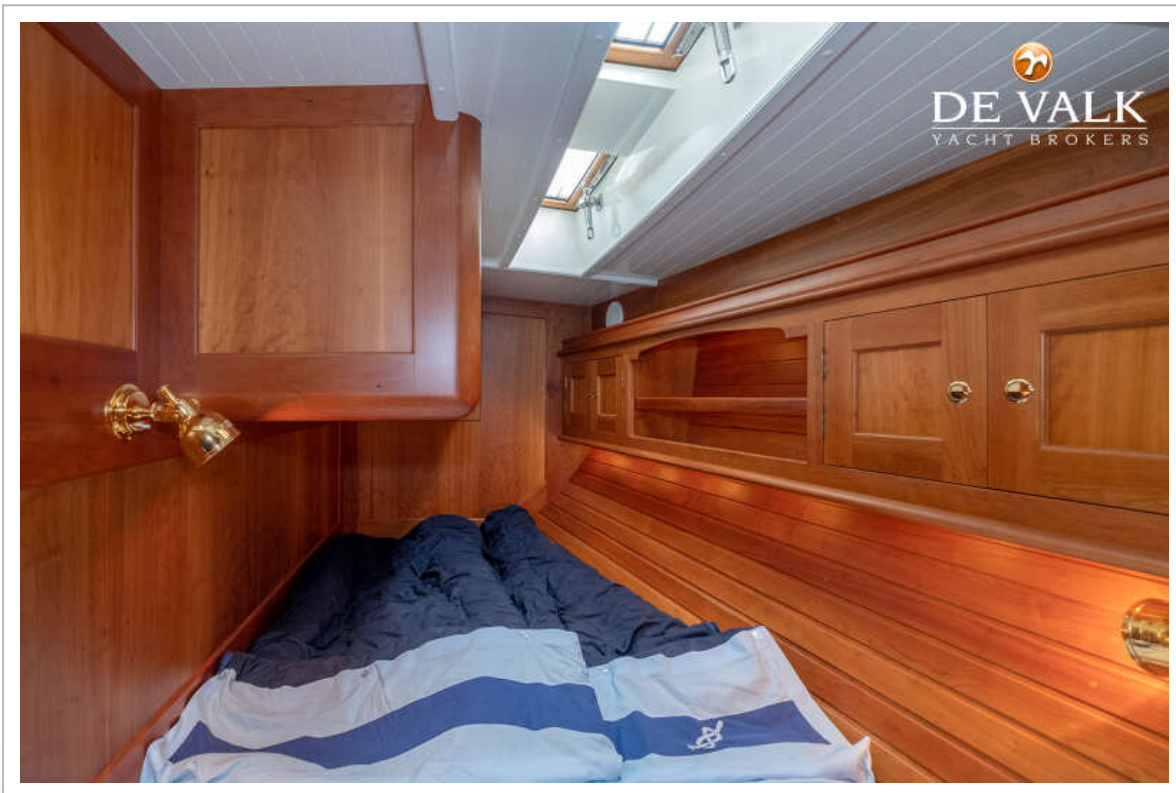
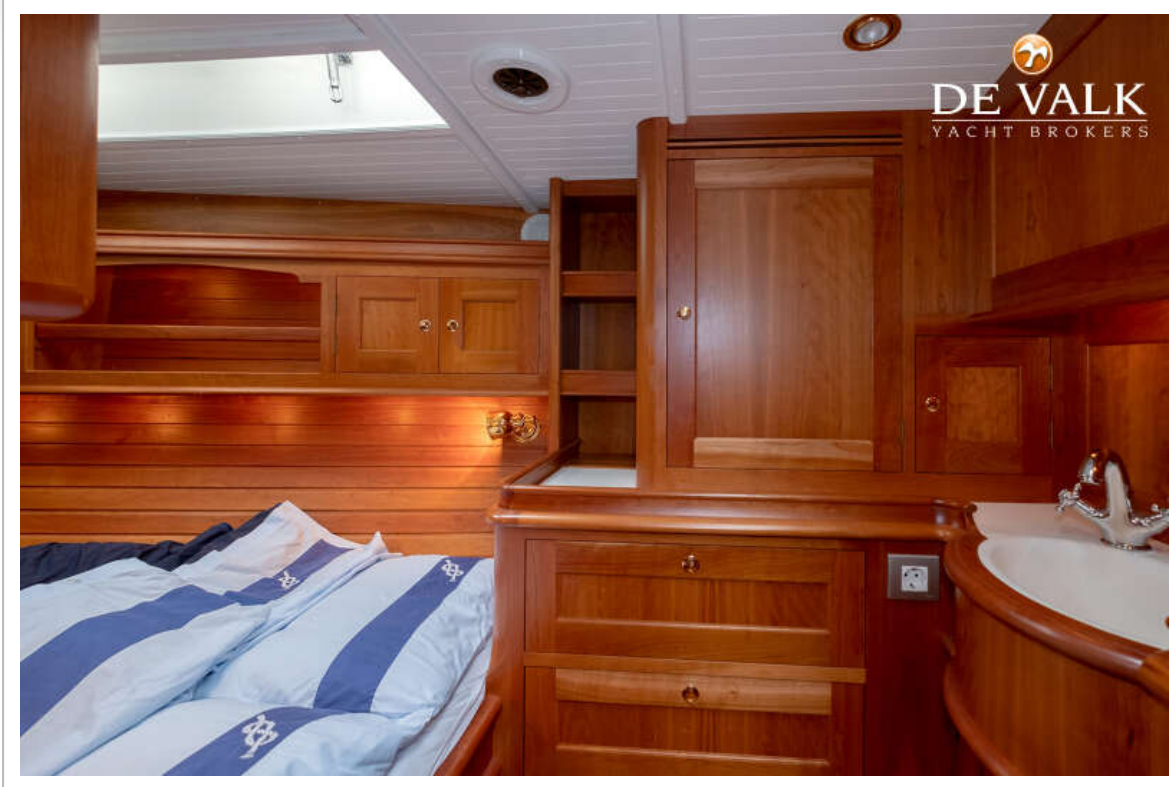




# HOEK CLASSIC 73FT

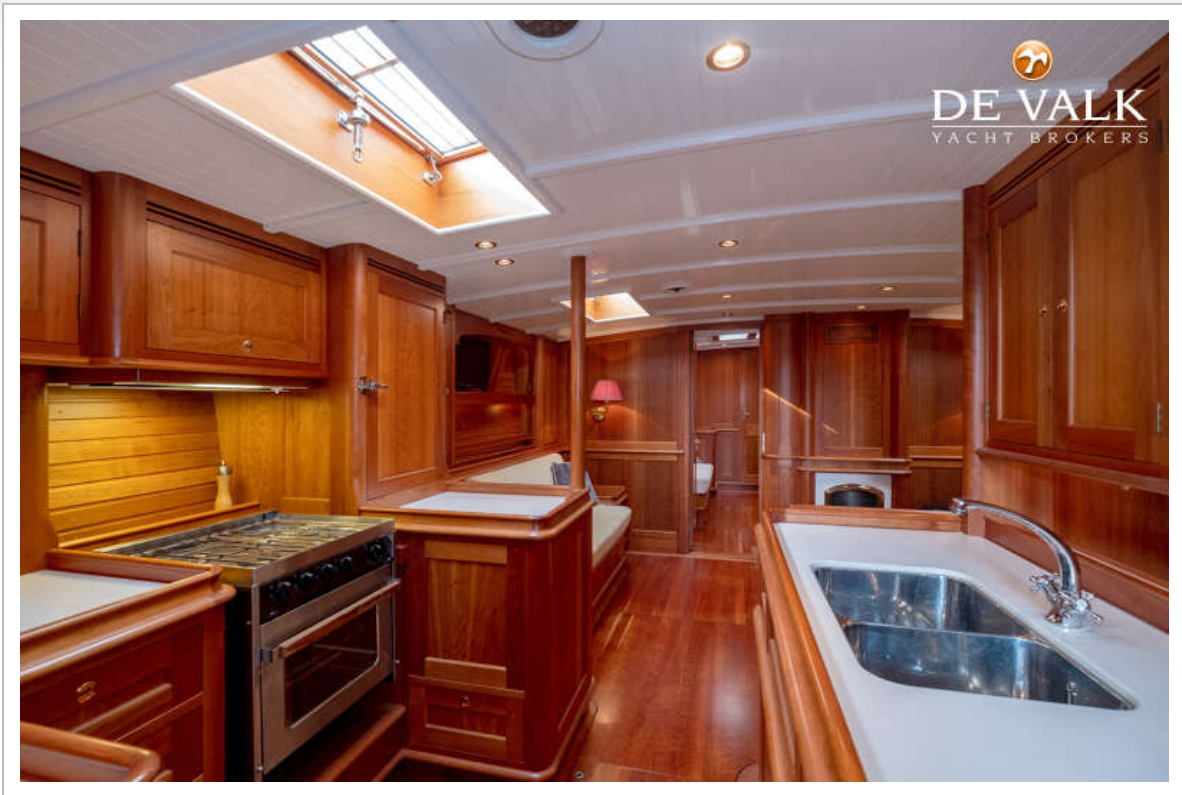


# HOEK CLASSIC 73FT

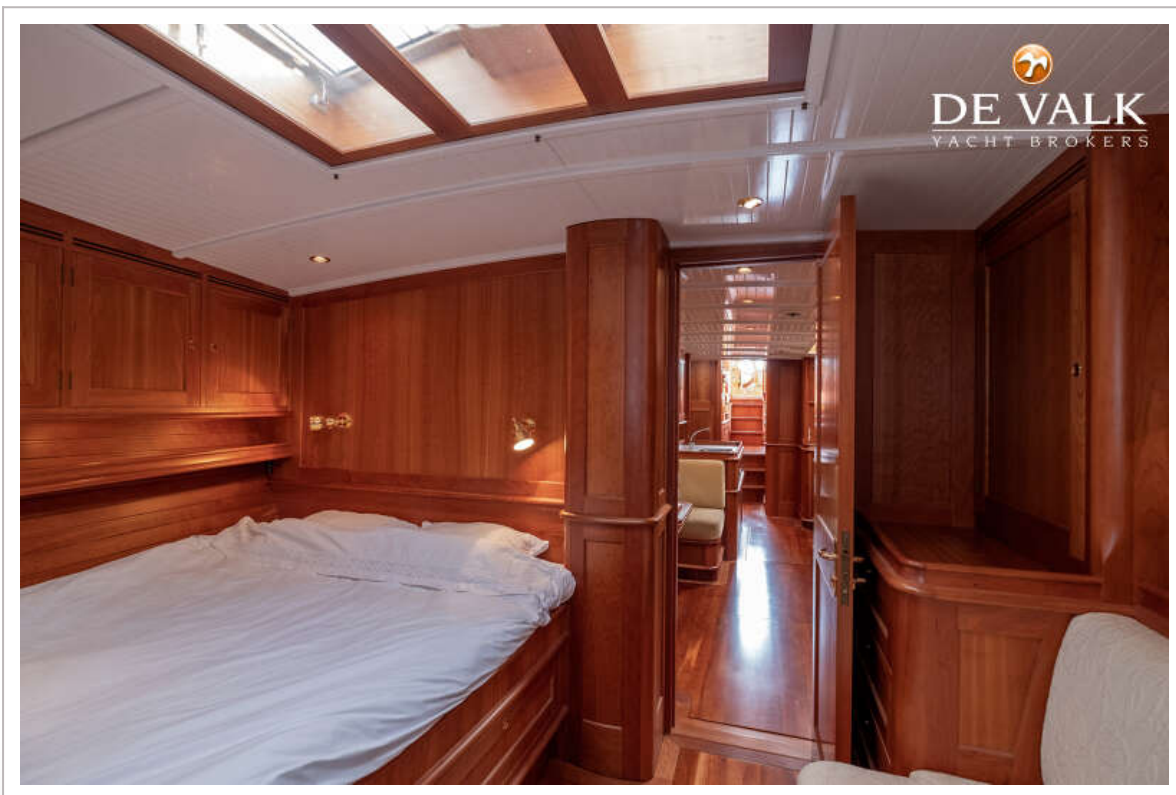




# HOEK CLASSIC 73FT

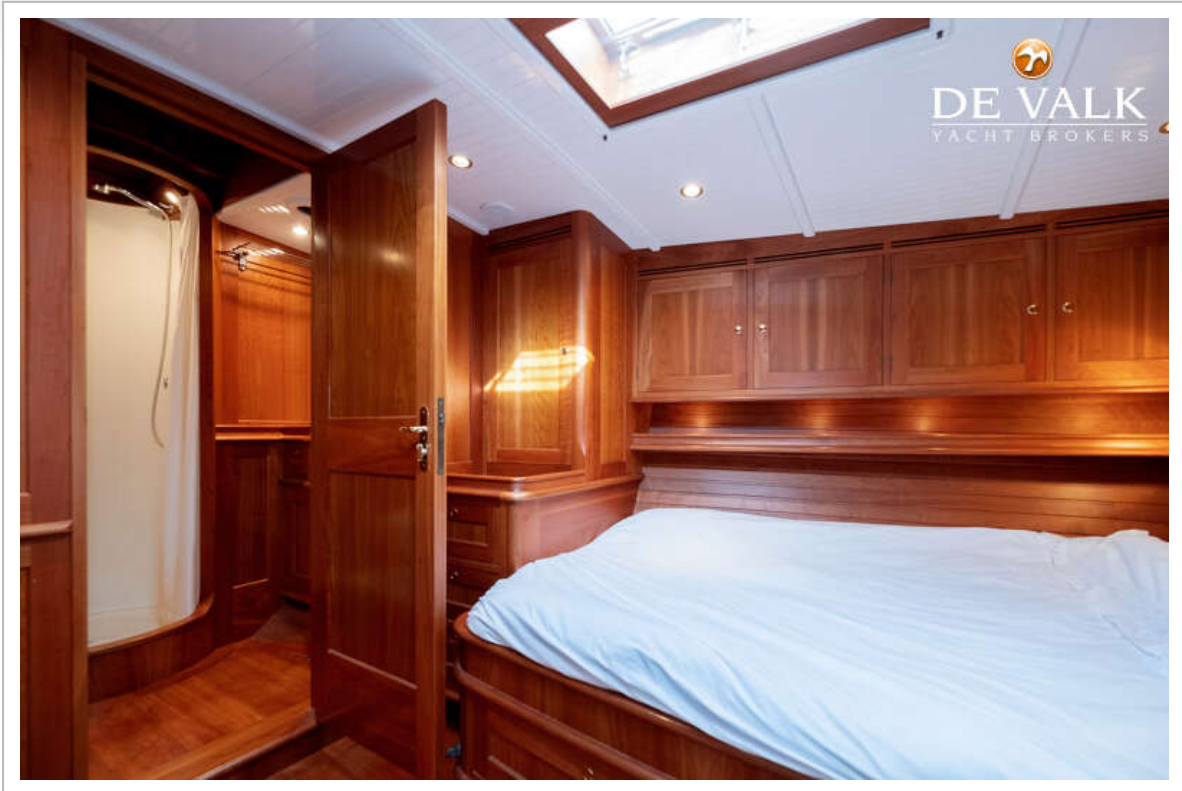


# HOEK CLASSIC 73FT





# HOEK CLASSIC 73FT

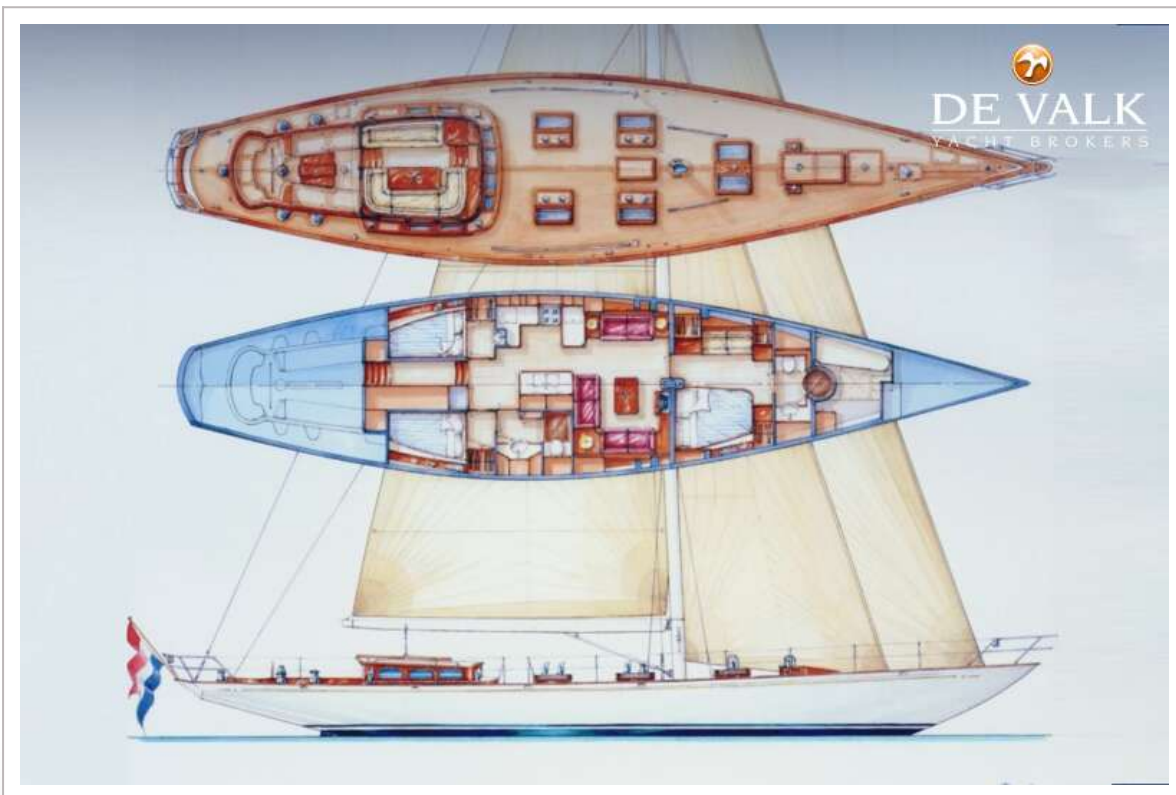


# HOEK CLASSIC 73FT





# HOEK CLASSIC 73FT



# HOEK CLASSIC 73FT



# HOEK CLASSIC 73FT

