



DE VALK
YACHT BROKERS



OYSTER 62 DECK SALOON



DE VALK
YACHT BROKERS

OYSTER 62 DECK SALOON

BROKER'S COMMENTS

This is "Diamond for two", a fantastic, perfect maintained Oyster 62. "Diamond for two" is for sure the benchmark for every pre-loved Oyster 62. She is currently with her second owner. Her complete technical equipment has been professionally maintained and she has received annual yard services which includes anti-fouling, hull polish, etc. A must see yacht! Mooring Cogolin separate available.

Arjen Hoeksma

SPECIFICATIONS

Dimensions	19.28 x 5.39 x 2.61 (m)	Builder	Oyster Marine Ltd.
Built	2003	Cabins	4
Material	GRP	Berths	7
Engine(s)	1 x Perkins Sabre M 185 diesel	Hp/Kw	185.00 (hp), 135.98 (kw)
Asking price	sold (VAT)	Lying	elsewhere / Not at sales office

CONTACT

Sales office	De Valk Loosdrecht	Telephone	+31 35 582 90 30
Address	't Breukeleveense Meentje 6 1231 LM Loosdrecht / Wijdemeren The Netherlands	E-mail	loosdrecht@devalk.nl

DISCLAIMER

These particulars are given in good faith as supplied but cannot be guaranteed.



OYSTER 62 DECK SALOON

GENERAL

Model	OYSTER 62 DECK SALOON
Type	sailing yacht
LOA (m)	19,28
LWL (m)	16,75
Beam (m)	5,39
Draft (m)	2,61
Air draft (m)	26,40
Headroom (m)	2,00
Year built	2003
Launched	August 2003
Builder	Oyster Marine Ltd.
Country	Great Britain
Designer	Bob Humphreys & Oyster Design
Displacement (t)	33,5
Ballast (tonnes)	lead 9,4
Gross tonnage	33,5
CE norm	A
Hull material	GRP
Hull colour	blue AWL-grip
Hull shape	round-bilged
Keel type	fin keel with bulb
Superstructure material	GRP
Deck material	GRP
Deck finish	teak
Superstructure deck finish	teak
Cockpit deck finish	teak
Antifouling (year)	2 layers International 2017
Dorades	yes
Window frame	aluminium
Window material	tempered glass



OYSTER 62 DECK SALOON

Deckhatch	5 x Lewmar
Portholes	aluminium
Insulation	Sandwich
Fuel tank (litre)	GRP 2 x 1000
Level indicator (fuel tank)	yes
Freshwater tank (litre)	GRP 2 tanks, total of 1600
Blackwater tank extraction	3 x
Wheel steering	rack & pinion Whitlock, 2 x
Emergency tiller	yes

ACCOMMODATION

Cabins	4
Berths	7
Crew cabin	yes
Interior	oak American
Floor	teak Veneer
Deck saloon	yes
Headroom saloon (m)	2,00
Heating	Cruiseair reversible with airco
Air-conditioning	4x Cruiseair reversible with heating
Navigation center	yes
Chart table	yes
Dinette	yes
Galley	yes
Countertop	corian White
Sink	stainless steel 2 x
Cooker	induction Miele 4- burner
Oven	Combi Panasonic
Microwave	Combi Panasonic
Fridge	2
Freezer	1



OYSTER 62 DECK SALOON

Hot water system	220V + engine
Water pressure system	electrical
Dishwasher	Bosch
Coffee maker	yes
Owners cabin	French bed
Wardrobe	hanging and shelves
Bathroom	en suite
Toilet	en suite
Toilet system	electric
Wash basin	in the bathroom
Shower	en suite
Guest cabin 1	single bed
Wardrobe	hanging
Bathroom	shared
Toilet	shared
Toilet system	electric
Wash basin	at the toilet
Shower	shared
Guest cabin 2	double bed
Wardrobe	hanging and shelves
Bathroom	shared
Toilet	shared
Toilet system	electric
Wash basin	in the bathroom
Shower	shared
Guest cabin 3	double bed
Wardrobe	hanging and shelves
Bathroom	yes
Toilet	en suite
Toilet system	electric
Wash basin	in the bathroom
Shower	en suite



OYSTER 62 DECK SALOON

Washing machine/dryer combi

Miele Novotronic WT 945

MACHINERY

No of engines	1
Make	Perkins
Type	Sabre M 185
HP	185,00
kW	135,98
Fuel	diesel
Year installed	2003
Maximum speed (kn)	9
Cruising speed (kn)	7,5
Engine hours	1488
Engine cooling system	freshwater heat exchanger
Drive	shaft
Engine controls	mechanical
Gearbox	hydraulic Aquadrive
Bowthruster	electric Sleipnir 20 KGF
Propeller type	feathering Max prop
Propeller blades	3
Propeller shaft material	stainless steel
Manual bilge pump	yes
Electric bilge pump	yes
Bilge alarm	yes
Electrical installation	12 / 24 / 220 V.
Generator	silent separator Westerbeke 8KVA 12 BTDC 514
Running hours generator	419
Batteries	2016, 8 x, 8-120A-24V
Battery monitor	Mastervolt
Battery charger	Mastervolt Mass 12/60
Inverter	Mastervolt 3500W



OYSTER 62 DECK SALOON

Battery charger/inverter	Mastervolt Dakar Sine 24/3000
Shorepower	with cable
Watermaker	Seafresh 95L

NAVIGATION

Compass	Raymarine
Compass on flybridge	2x Oyster
Electric compass	Raymarine
Depth sounder	Raymarine ST60
Log	Raymarine ST60
Windset	Raymarine ST60
Repeater	Raymarine
VHF	Sailor + Icom IC-R75
VHF handheld	Icom handheld 2 x
Autopilot	Raymarine ST6001 smartpilot
Rudder angle indicator	yes
Radar	Raymarine RC631, RL80C and R80
GPS	Geonav 11C
Plotter	Geonav 11C
Radar/GPS	Raymarine plus RC 631
Radar/plotter	Raymarine RL 80 C path finder
Navtex	ICS Nav 6
Extra info	Satelliet Telefoon Iridium

EQUIPMENT

Sprayhood	yes
Sprayhood with grab rail	yes
Cockpit cover	yes
Bimini	New and old available
Sun awning	yes
Window cover	yes



OYSTER 62 DECK SALOON

Cockpit cushions	yes
Cockpit table	With fridge
Bathing platform	yes
Boarding ladder	stainless steel 2x
Gangway	Besenzoni hydraulic 235
Deck shower	yes
Anchor	50 kg
Anchor chain	Stainless steel 90 meter 12mm
Chain counter	Quick CHC 1202M
Windlass	electrical Lewmar 3000
Capstan	yes
Davits	Simpson S225
Davits controls	electrical
Sea railing	wire
Grab rail (superstructure)	yes
Railing side opening gates	yes
Pushpit	stainless steel Extra long
Pulpit	yes
Life raft	yes
Rope cutter	yes
Horn	yes
Radar reflector	Active Sea me & passive
Fenders	yes
Mooring lines	yes
Spare parts	yes
Tools	yes
TV	1 x Samsung, 1 x Sharp
TV receiver	KVH 3 antenne dome
Satellite	KVH 3 antenne dome
Radio-cd player	Pioneer radio - CD
Cockpit speakers	yes
Speakers in salon	yes



OYSTER 62 DECK SALOON

Speakers in cabin	yes
Clock - barometer	yes
Fire extinguisher	3 x
Latest extinguisher survey	2016
Extinguisher in engine room	yes
Auto extinguisher system	yes

RIGGING

Rigging	sloop-cutter 2 x hydr. furlers
Standing rigging	wire
Material mast	aluminium coated
Spreaders	3 pair
Keel stepped mast	yes
Mainsail	yes
Stoway mast	yes
Cutterstay	yes
Genoa	yes
Cutter furler	Hydraulic
Gennaker	yes
Stormjib	yes
Reefing System	main in-mast furling Hydraulic
Backstay adjuster	hydraulic Navtec
Boomvang	hydraulic Navtec
Primary sheet winch	2 x 66 EST
Secondary sheet winch	2 x 54 EST
Halyard winches	2 x 48 ST
Multifunctional winches	1 x 54 EST for mainsail, 1 x 30 ST
Spi-pole	carbon



OYSTER 62 DECK SALOON



OYSTER 62 DECK SALOON



OYSTER 62 DECK SALOON



OYSTER 62 DECK SALOON



OYSTER 62 DECK SALOON



OYSTER 62 DECK SALOON



OYSTER 62 DECK SALOON



OYSTER 62 DECK SALOON



OYSTER 62 DECK SALOON



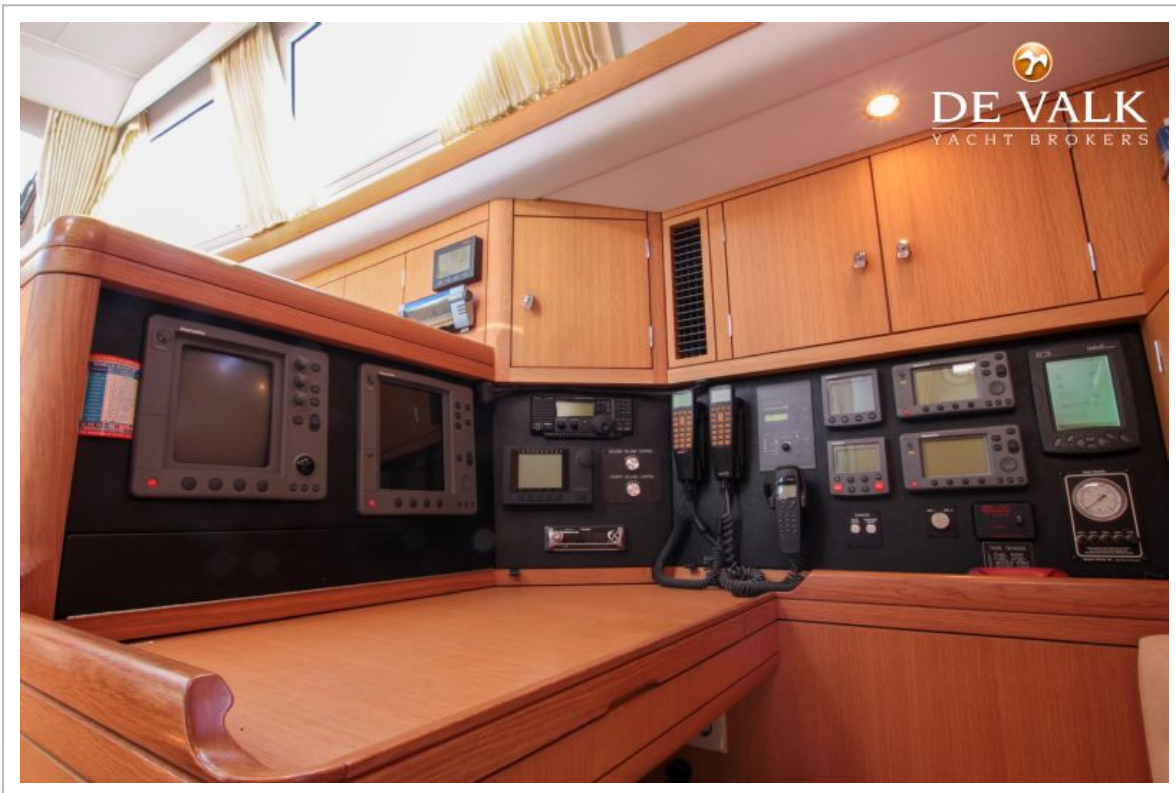
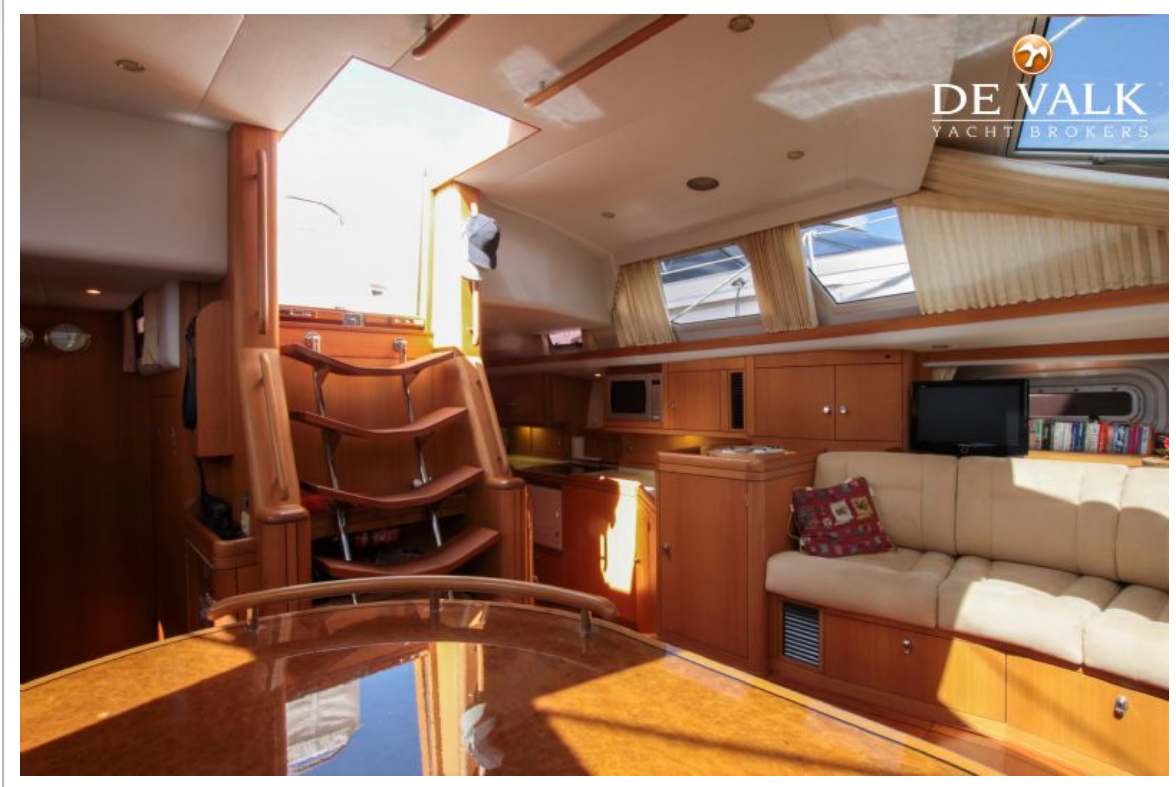
OYSTER 62 DECK SALOON



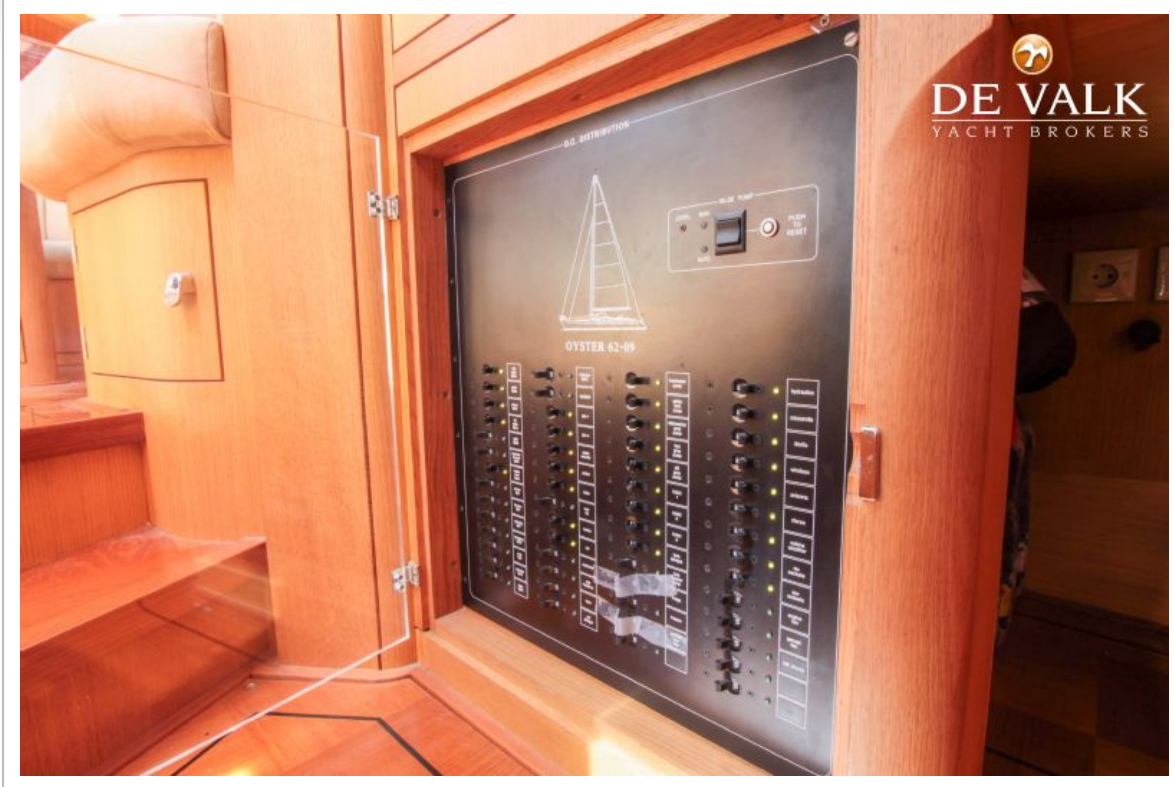
OYSTER 62 DECK SALOON



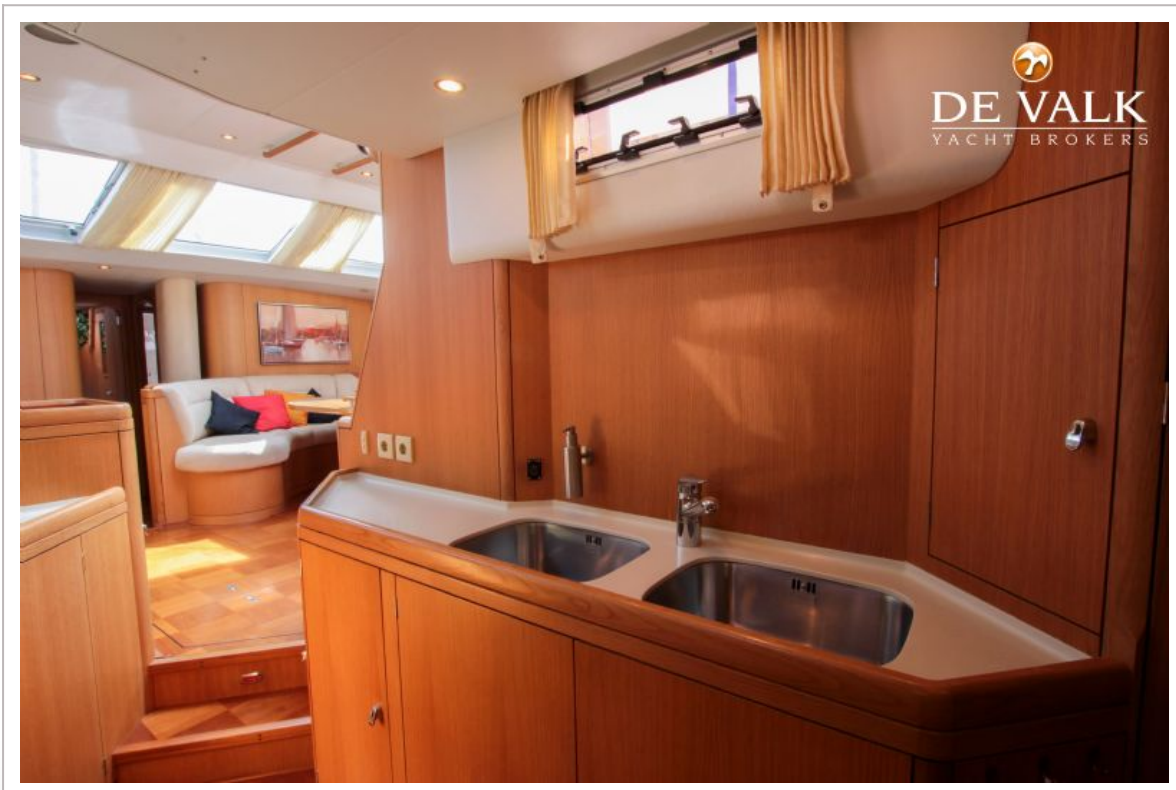
OYSTER 62 DECK SALOON



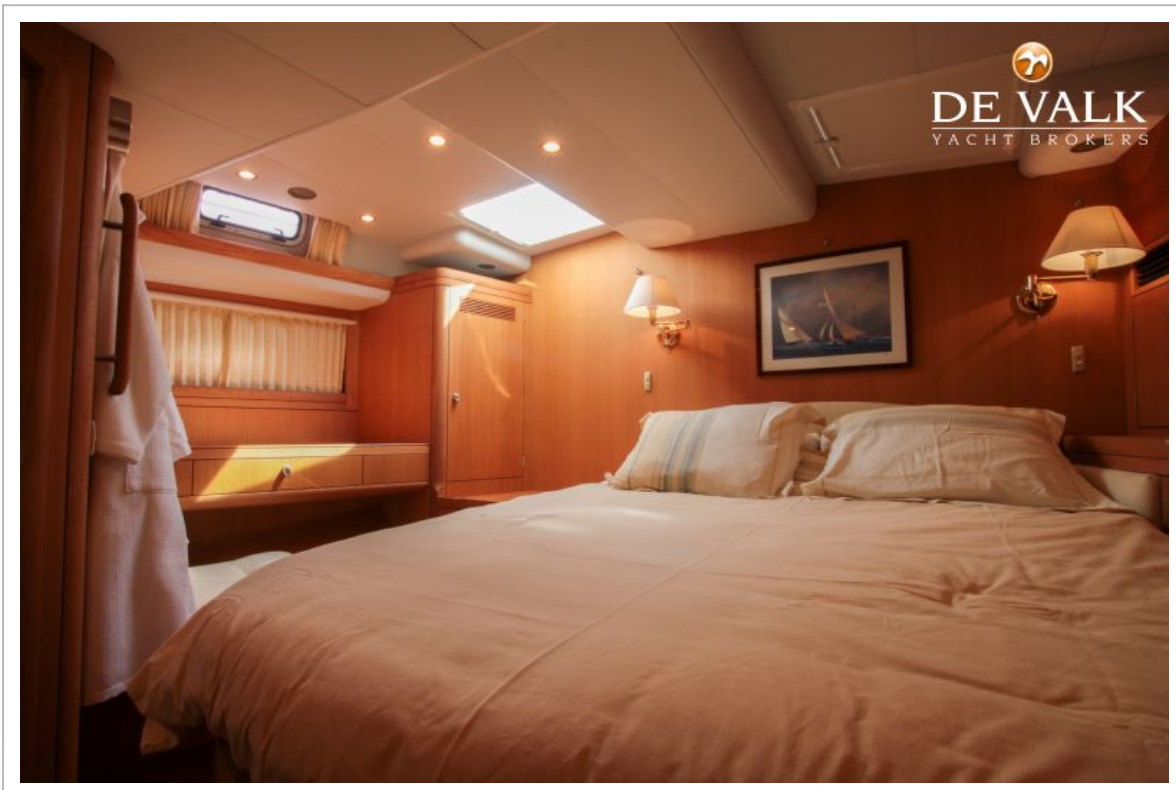
OYSTER 62 DECK SALOON



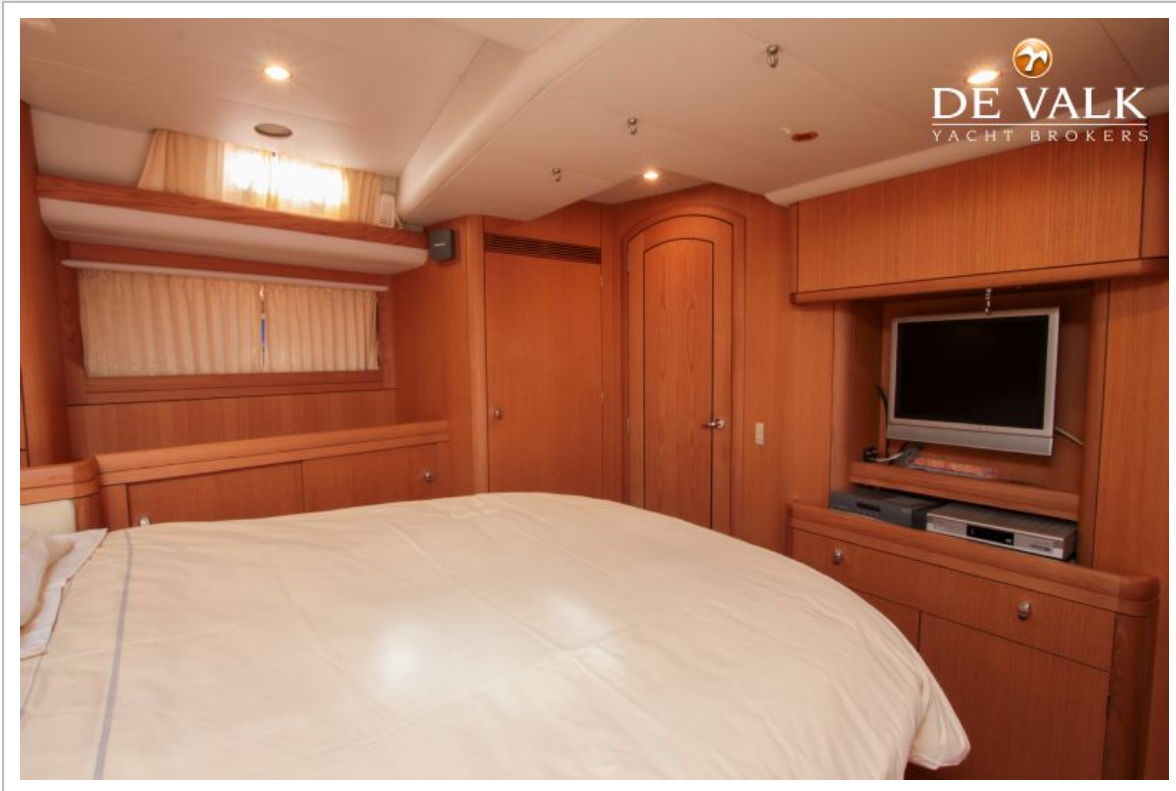
OYSTER 62 DECK SALOON



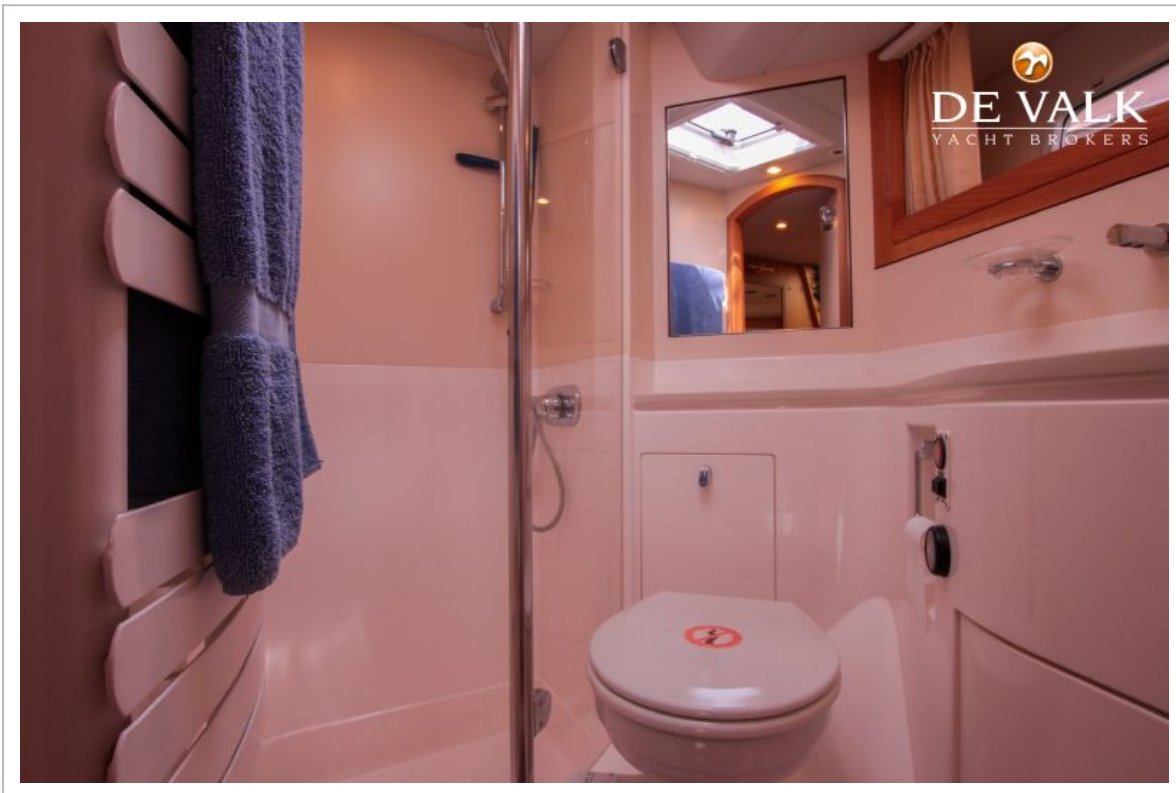
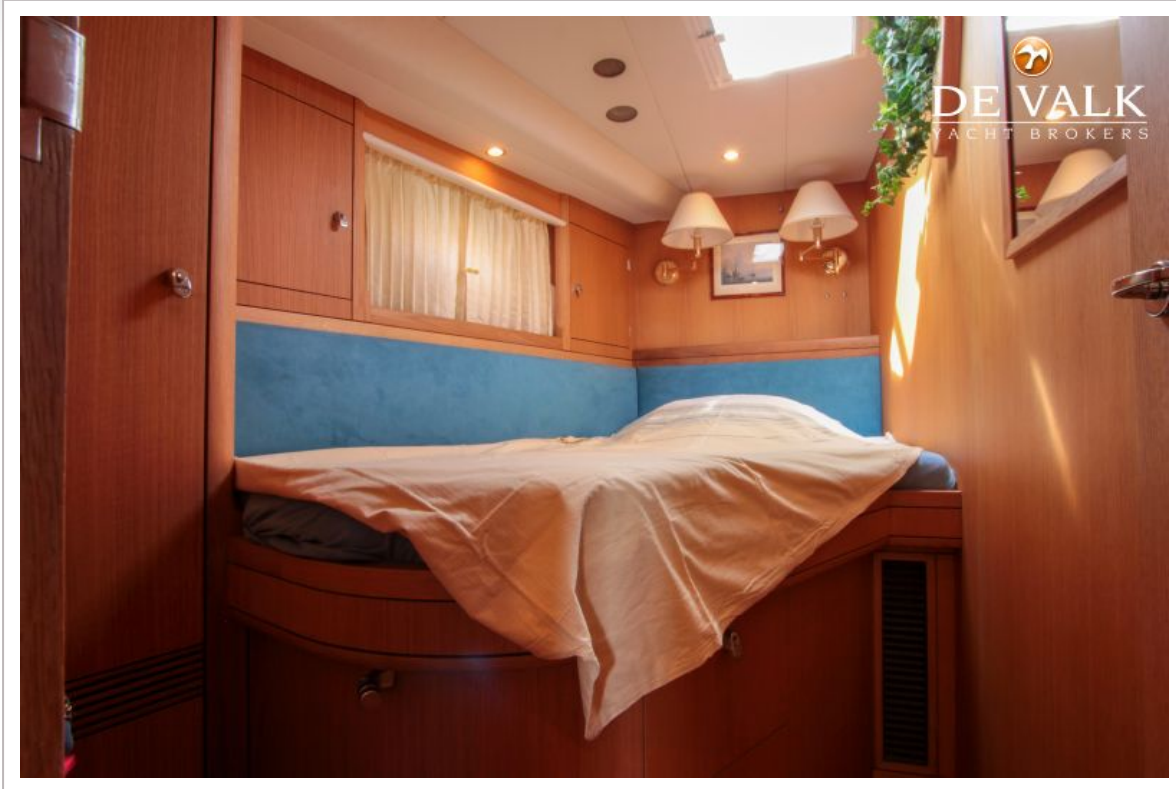
OYSTER 62 DECK SALOON



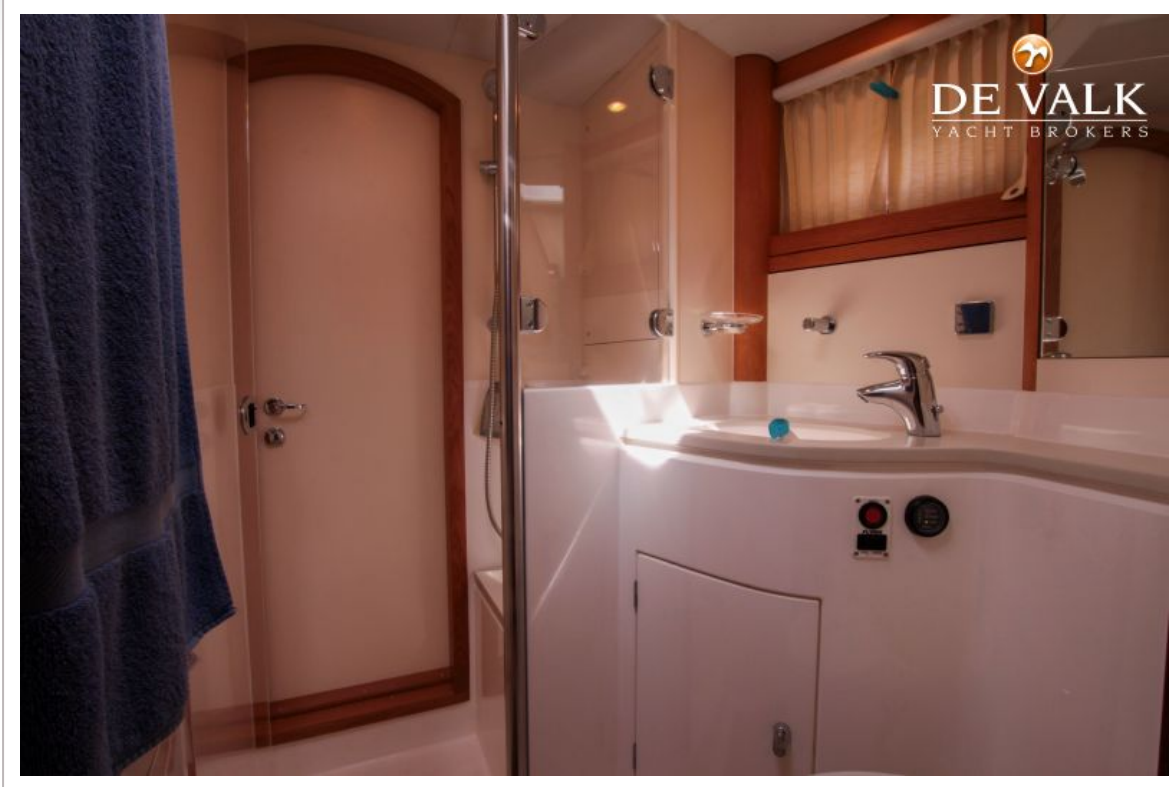
OYSTER 62 DECK SALOON



OYSTER 62 DECK SALOON



OYSTER 62 DECK SALOON



OYSTER 62 DECK SALOON

