



DE VALK
YACHT BROKERS



DUTCH STEEL MOTOR YACHT



DE VALK
YACHT BROKERS

DUTCH STEEL MOTOR YACHT

BROKER'S COMMENTS

Dutch built steel motor yacht. Equipped with double Gardner diesel engines, stabilizers, 16 kW electric bow thruster, three cabin lay-out, crew cabin etc. ASKING PRICE IS NEGOTIABLE, please make an offer.

Arne Doodeman

SPECIFICATIONS

| | | | |
|---------------------|-------------------------|----------------|---------------------------------|
| Dimensions | 22.40 x 5.49 x 2.36 (m) | Builder | Scheepswerf Vooruit Zaandam |
| Built | 1965 | Cabins | 5 |
| Material | Steel | Berths | 9 |
| Engine(s) | 2 x Gardner Diesel | Hp/Kw | 2 x 127.00 (hp), 93.35 (kw) |
| Asking price | sold (VAT) | Lying | elsewhere / Not at sales office |

CONTACT

| | | | |
|---------------------|---|------------------|------------------|
| Sales office | De Valk Sneek | Telephone | +31 515 42 80 30 |
| Address | Zwolsmanweg 7 8606 KC Sneek The Netherlands | E-mail | sneek@devalk.nl |

DISCLAIMER

These particulars are given in good faith as supplied but cannot be guaranteed.



DUTCH STEEL MOTOR YACHT

GENERAL

| | |
|--------------------------------|------------------------------|
| Model | DUTCH STEEL MOTOR YACHT |
| Type | motor yacht |
| LOA (m) | 22,40 |
| Beam (m) | 5,49 |
| Draft (m) | 2,36 |
| Year built | 1965 |
| Builder | Scheepswerf Vooruit Zaandam |
| Country | The Netherlands |
| Designer | H.H.C. Baars |
| Displacement (t) | 83 |
| Hull material | steel |
| Hull colour | white |
| Hull shape | roundbilged |
| Keel type | long keel |
| Superstructure material | steel |
| Deck finish | teak |
| Window frame | stainless steel |
| Window material | glass |
| Flybridge | yes |
| Mast can be lowered | yes |
| Fuel tank (litre) | 12740 |
| Freshwater tank (litre) | 8190 |
| Blackwater tank (litre) | 2000 |
| Wheel steering | mechanical |
| Tiller | yes |
| More info on paintwork | Completely repainted in 2009 |

ACCOMMODATION

| | |
|---------------|---|
| Cabins | 5 |
| Berths | 9 |



DUTCH STEEL MOTOR YACHT

| | |
|------------------------------|-----------------------------------|
| Crew cabin | two of the cabins are crew cabins |
| Crew berths | 1 double and 1 single |
| Interior | teak |
| Floor | carpet |
| Aft deck | yes |
| Saloon | yes |
| Heating | yes |
| Air-conditioning | 2x Marina |
| Galley | yes |
| Countertop | yes |
| Cooker | Gaggenau |
| Oven | yes |
| Microwave | yes |
| Fridge | yes |
| Freezer | yes |
| Hot water system | 2x boiler |
| Water pressure system | yes |
| Dishwasher | Siemens |
| Owners cabin | double bed |
| Wardrobe | yes |
| Bathroom | en suite |
| Toilet | yes |
| Wash basin | yes |
| Shower | yes |
| Guest cabin 1 | double bed |
| Wardrobe | yes |
| Bathroom | en suite |
| Toilet | yes |
| Wash basin | yes |
| Shower | yes |
| Guest cabin 2 | double bed |
| Wardrobe | yes |



DUTCH STEEL MOTOR YACHT

| | |
|------------------------|----------|
| Bathroom | en suite |
| Toilet | yes |
| Wash basin | yes |
| Shower | yes |
| Washing machine | Miele |
| Dryer | Siemens |

MACHINERY

| | |
|--------------------------------|-------------------------|
| No of engines | 2 |
| Make | Gardner |
| HP | 127,00 |
| kW | 93,35 |
| Fuel | diesel |
| Maximum speed (kn) | 10 |
| Cruising speed (kn) | 8,5 |
| Engine cooling system | seawater |
| Gearbox | hydraulic |
| Bowthruster | electric 16 kW |
| Propeller type | fixed |
| Propeller blades | 3-bladed |
| Electric bilge pump | yes |
| Electrical installation | 12/24/220 |
| Generator | Mitsubishi 16 kW (1997) |
| Generator 2 | Mitsubishi 20 kW (2003) |
| Batteries | yes |
| Battery charger | 2x Victron |
| Inverter | 2x Mastervolt |
| Shorepower | with cable |
| Watermaker | 90 L/ph |
| Stabilizers | fin Vosper |



NAVIGATION

| | |
|------------------|---------------------|
| Compass | VDO |
| Depth sounder | VDO |
| Log | VDO |
| Windset | VDO |
| Fish finder | Furuno |
| VHF | Simrad |
| Autopilot | Robertson |
| Radar | Simrad |
| Plotter | Simrad |
| Weather receiver | Fastnet |
| Radio receiver | Icom SSB |
| Transmitter | Nera Inmarsat M+fax |
| Searchlight | yes |

EQUIPMENT

| | |
|-----------------|----------------------------------|
| Cockpit table | yes |
| Cockpit chairs | yes |
| Boarding ladder | yes |
| Gangway | hydraulic (2014) |
| Deck shower | yes |
| Anchor | yes |
| Anchor chain | yes |
| Windlass | electrical |
| Windlass aft | yes |
| Deck wash | yes |
| Dinghy | Williams Jet 100 hp & Novomarine |
| Deck crane | electric Stainless steel |
| Sea railing | yes |
| Life raft | 2x 8 pers (2004) |
| Lifejackets | 10 |



DUTCH STEEL MOTOR YACHT

| | |
|-----------------|-----------|
| Wiper | yes |
| Fenders | yes |
| Mooring lines | yes |
| TV | yes |
| TV receiver | yes |
| Radio-cd player | Blaupunkt |



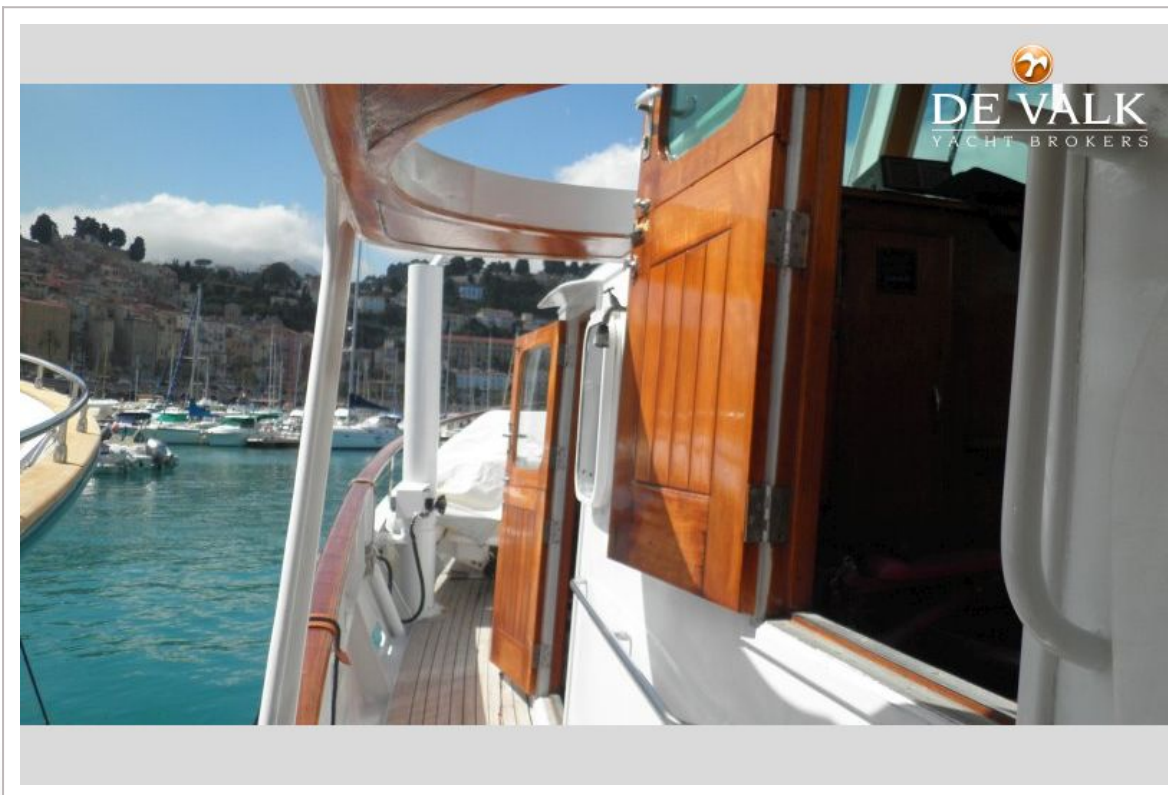
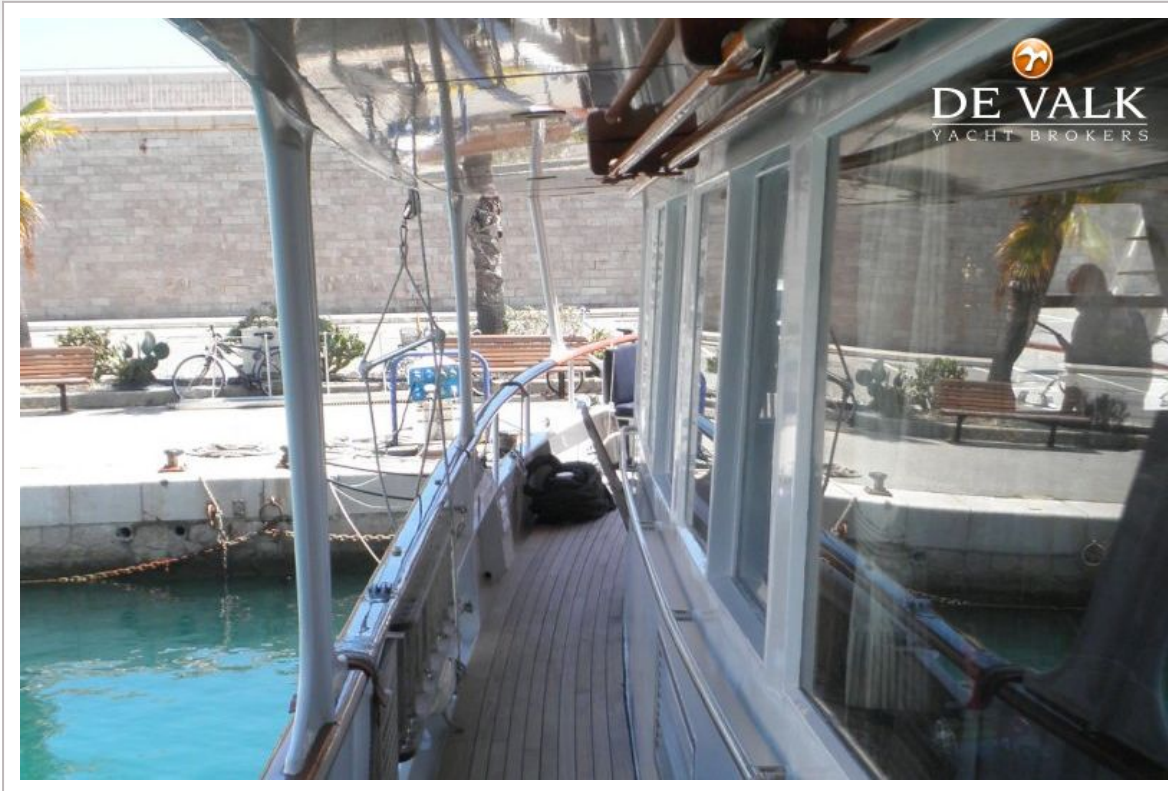
DUTCH STEEL MOTOR YACHT



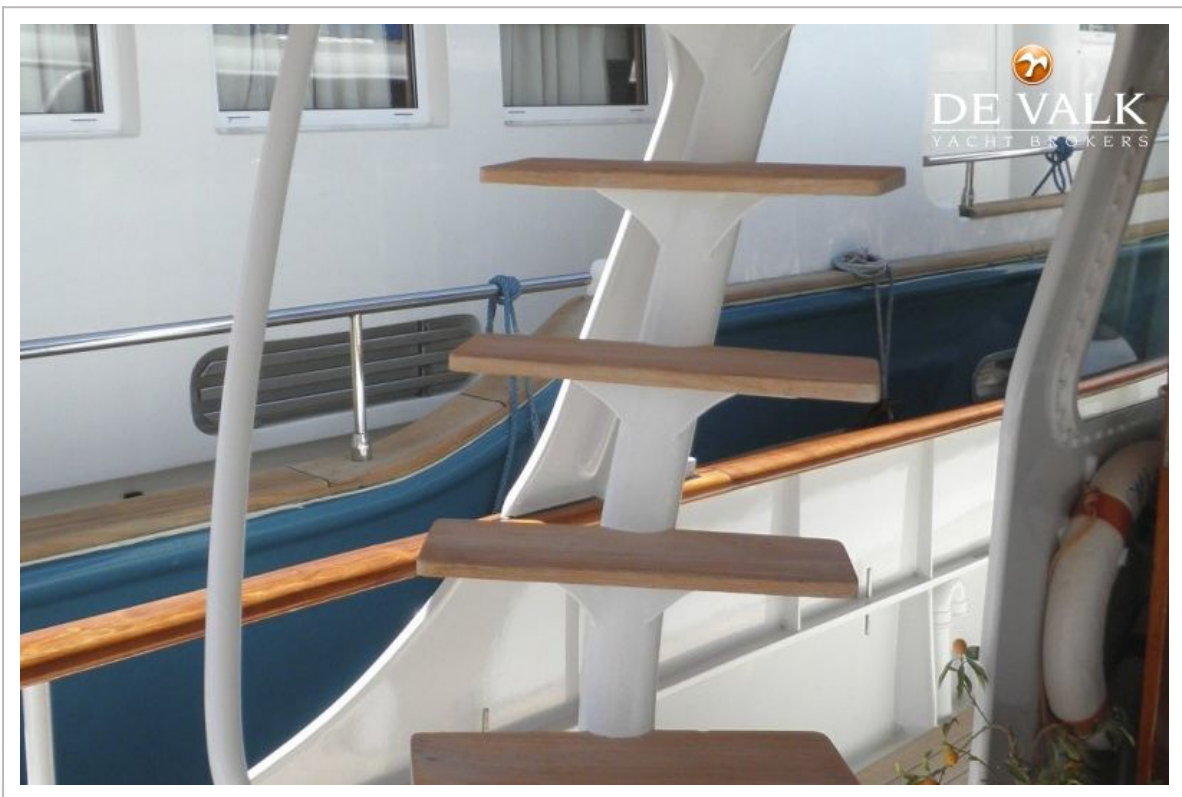
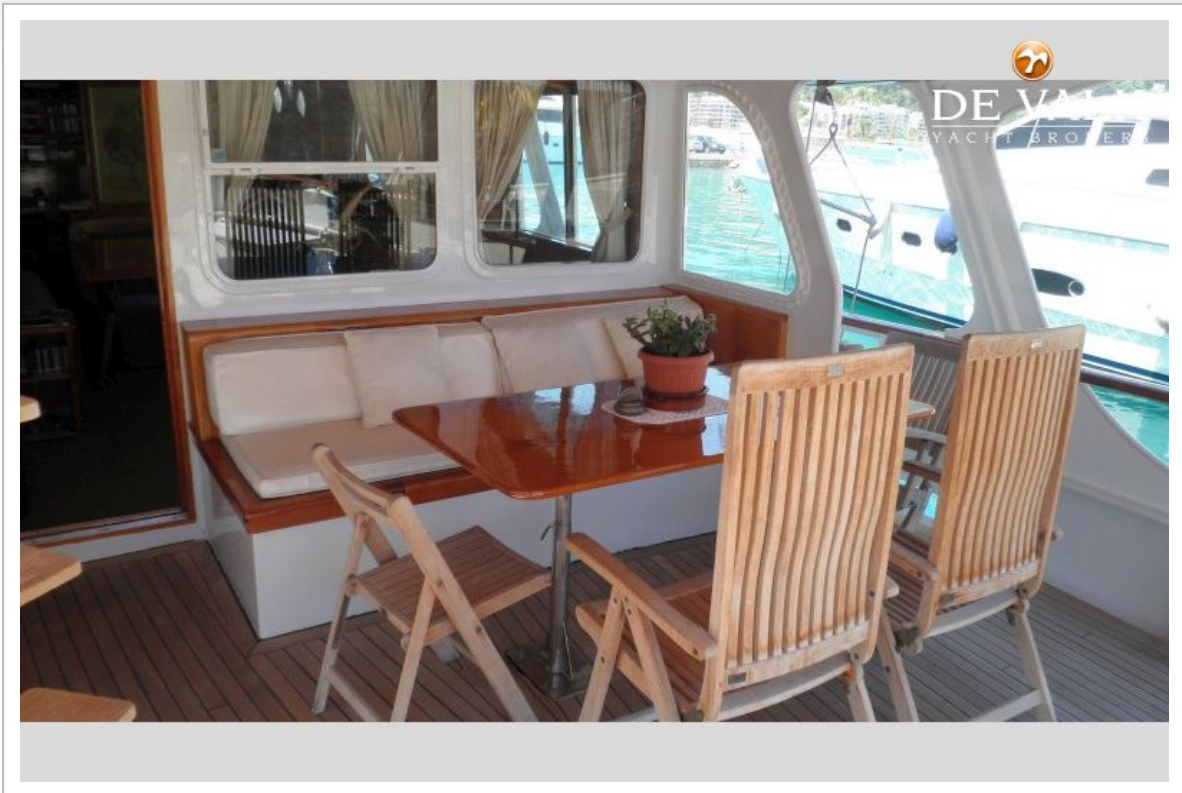
DUTCH STEEL MOTOR YACHT



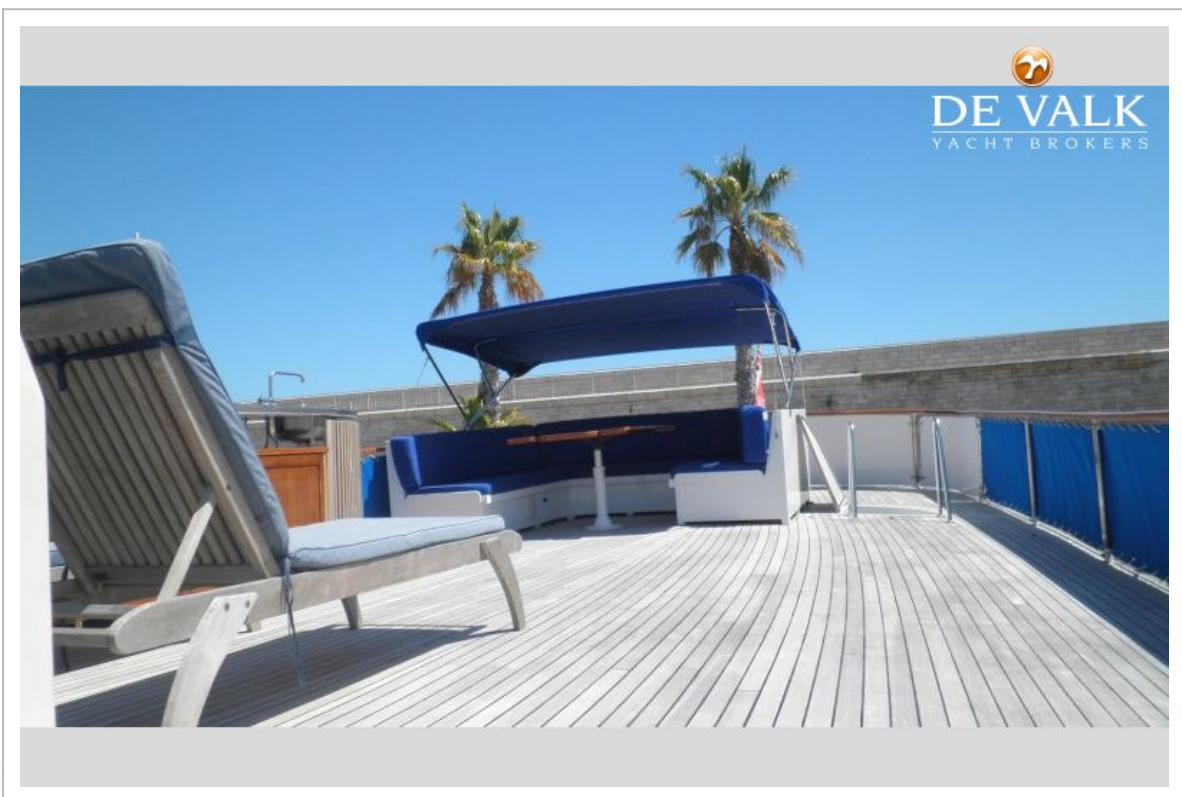
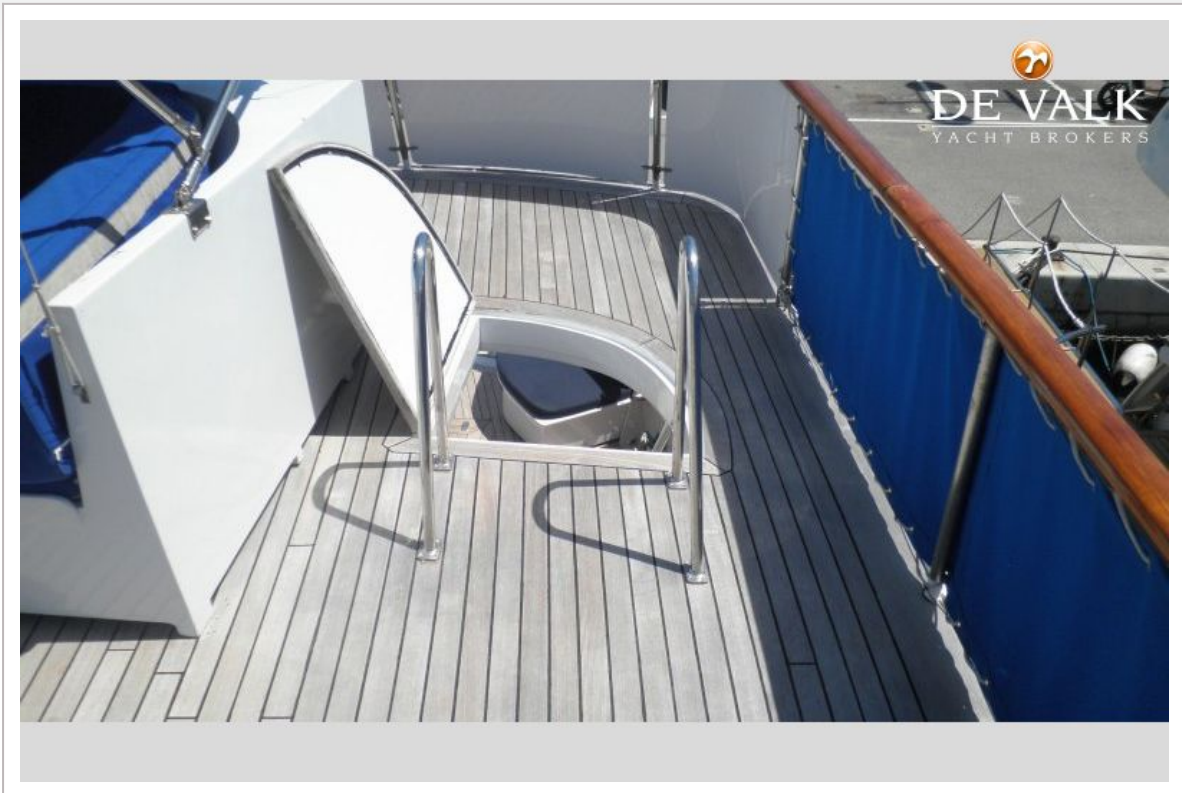
DUTCH STEEL MOTOR YACHT



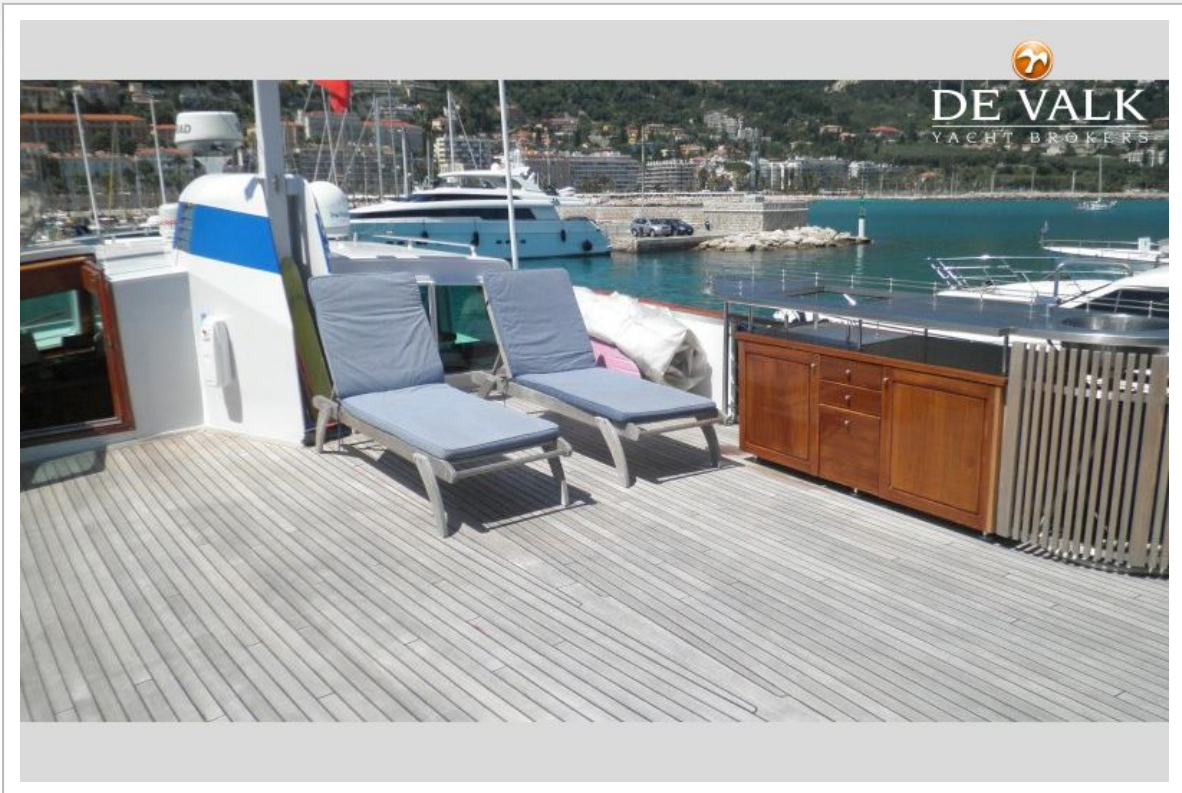
DUTCH STEEL MOTOR YACHT



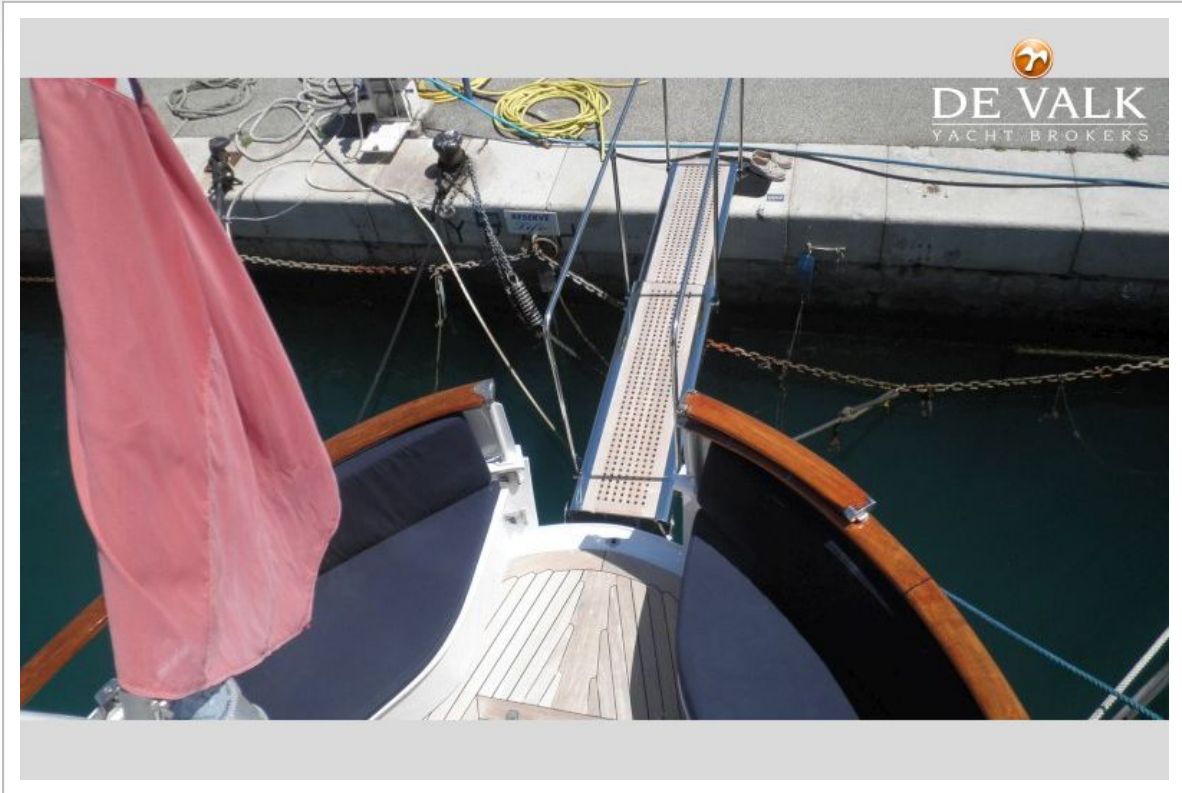
DUTCH STEEL MOTOR YACHT



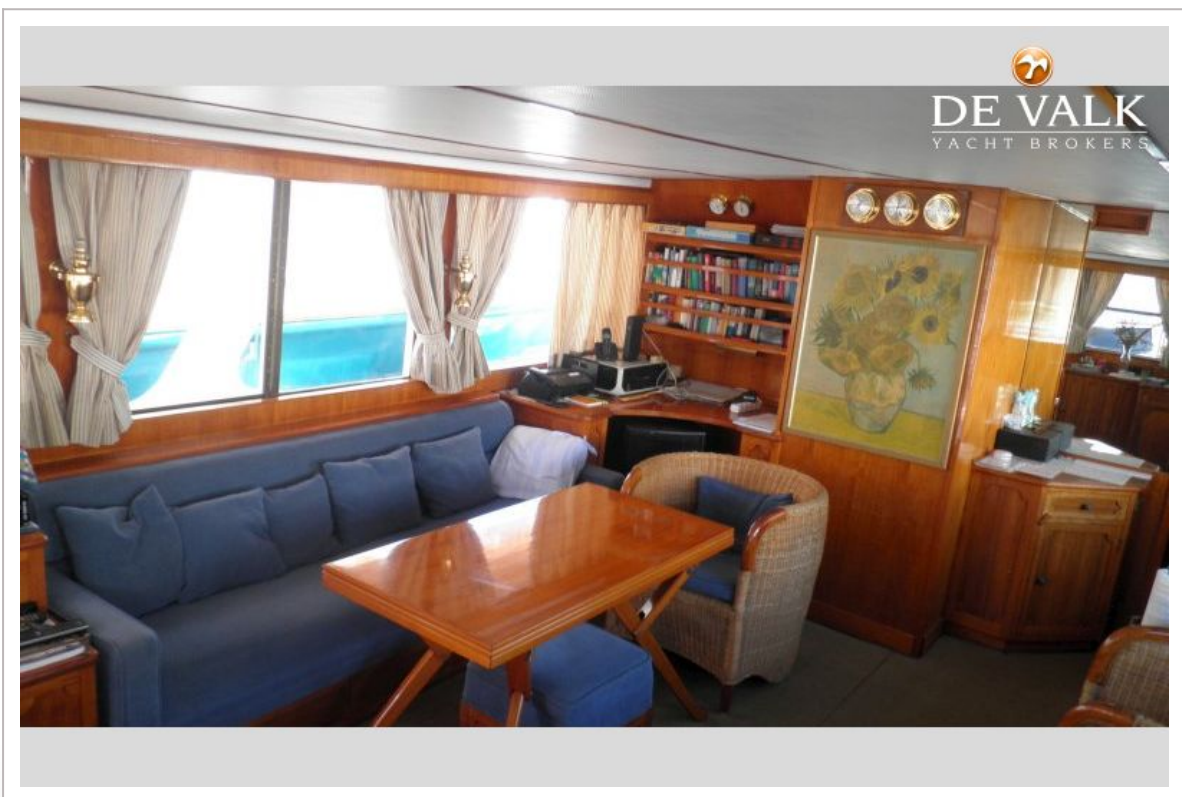
DUTCH STEEL MOTOR YACHT



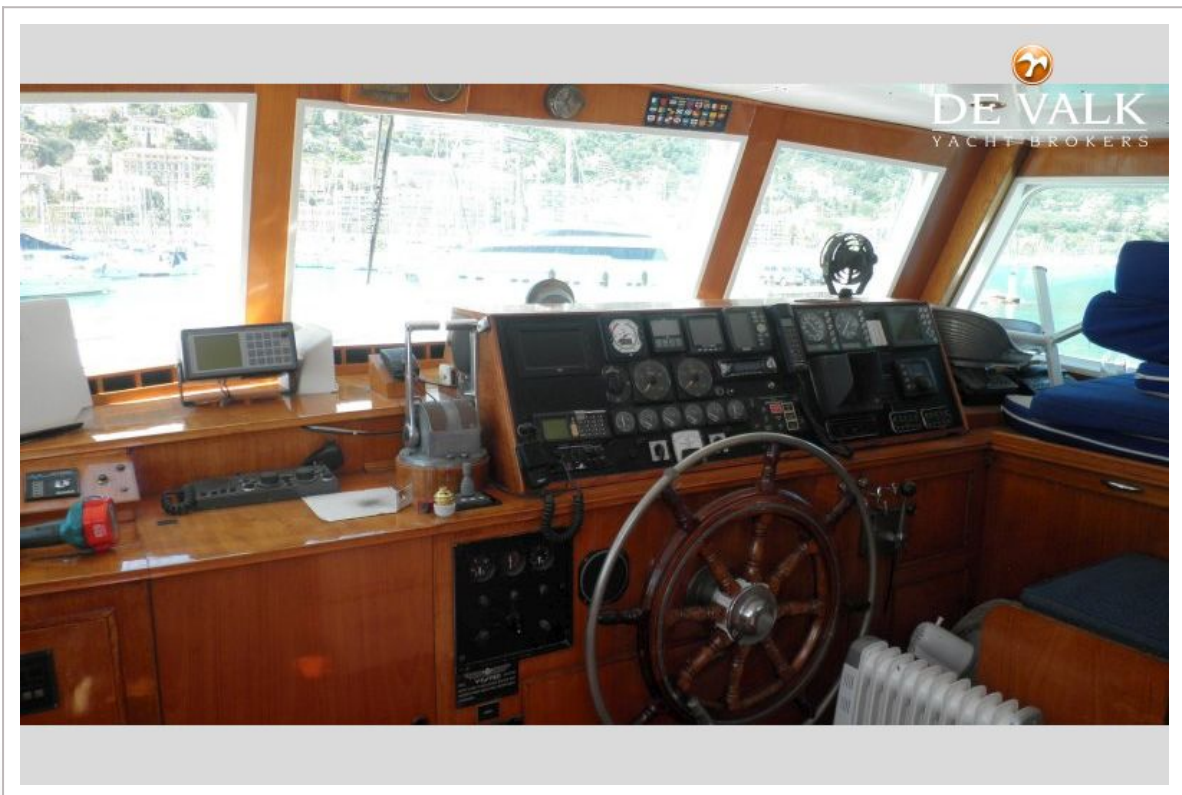
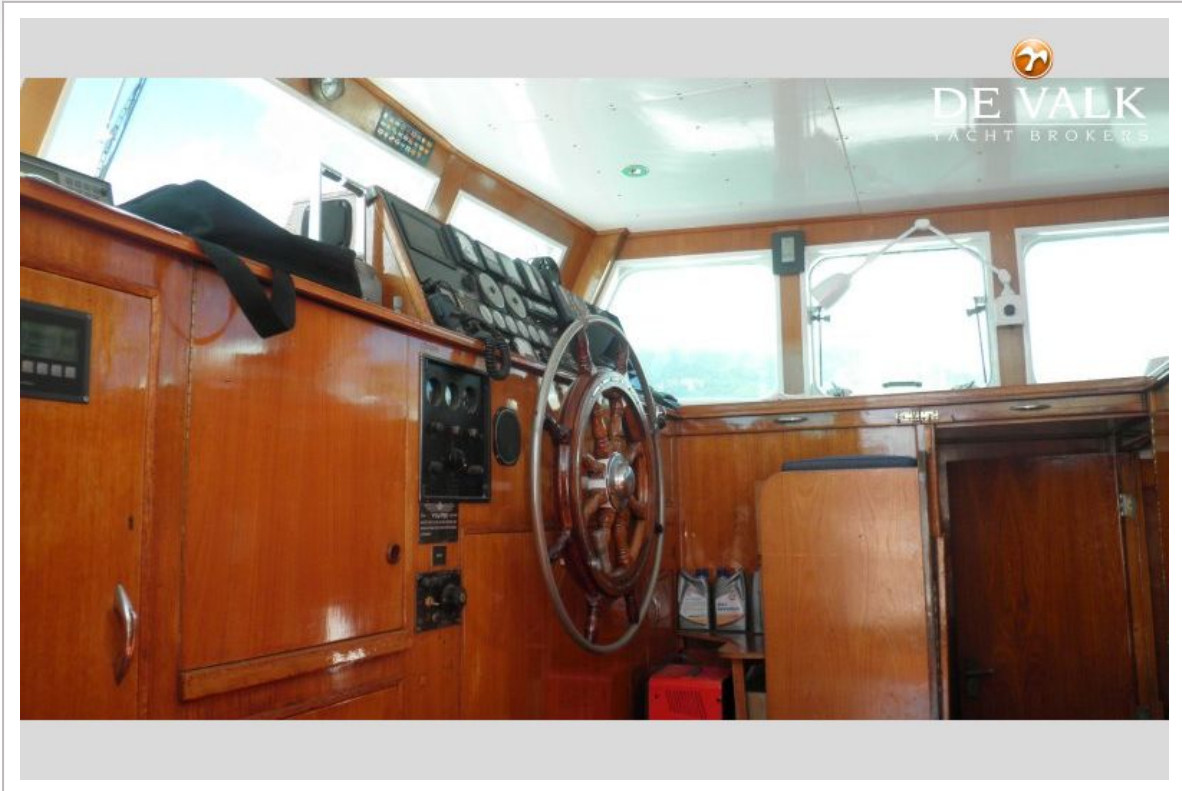
DUTCH STEEL MOTOR YACHT



DUTCH STEEL MOTOR YACHT



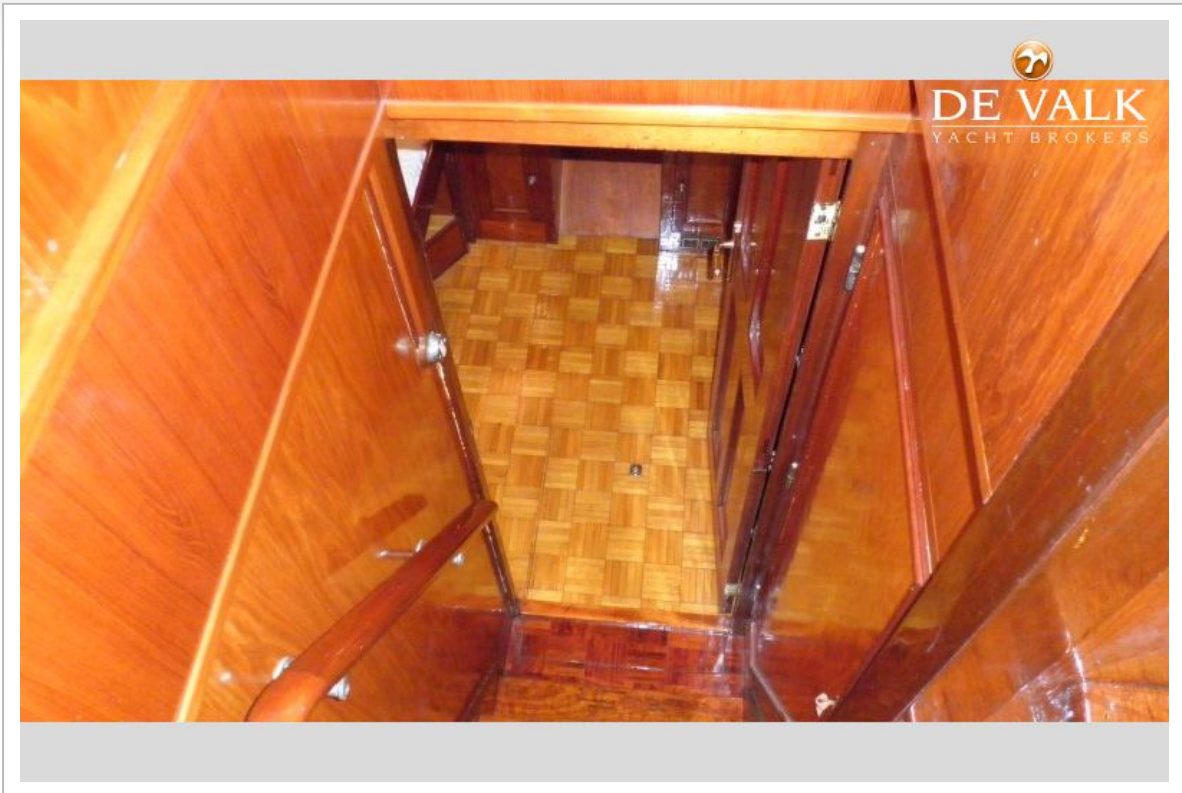
DUTCH STEEL MOTOR YACHT



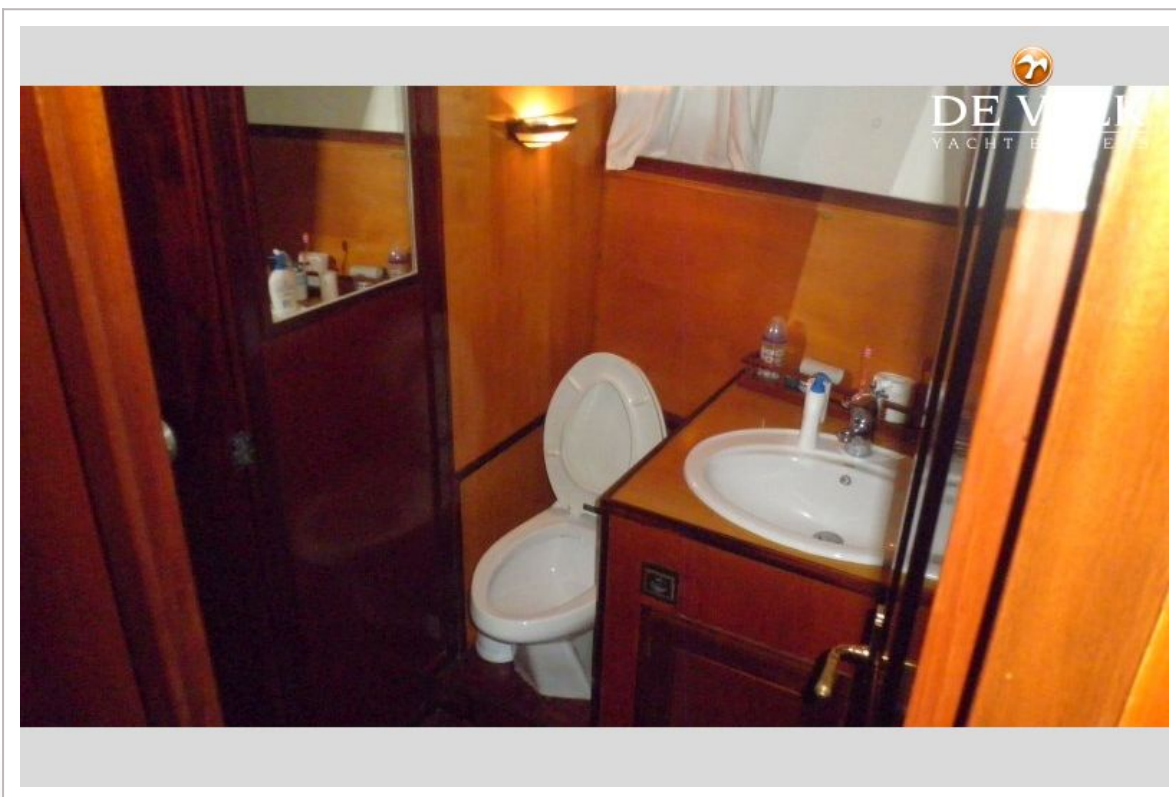
DUTCH STEEL MOTOR YACHT



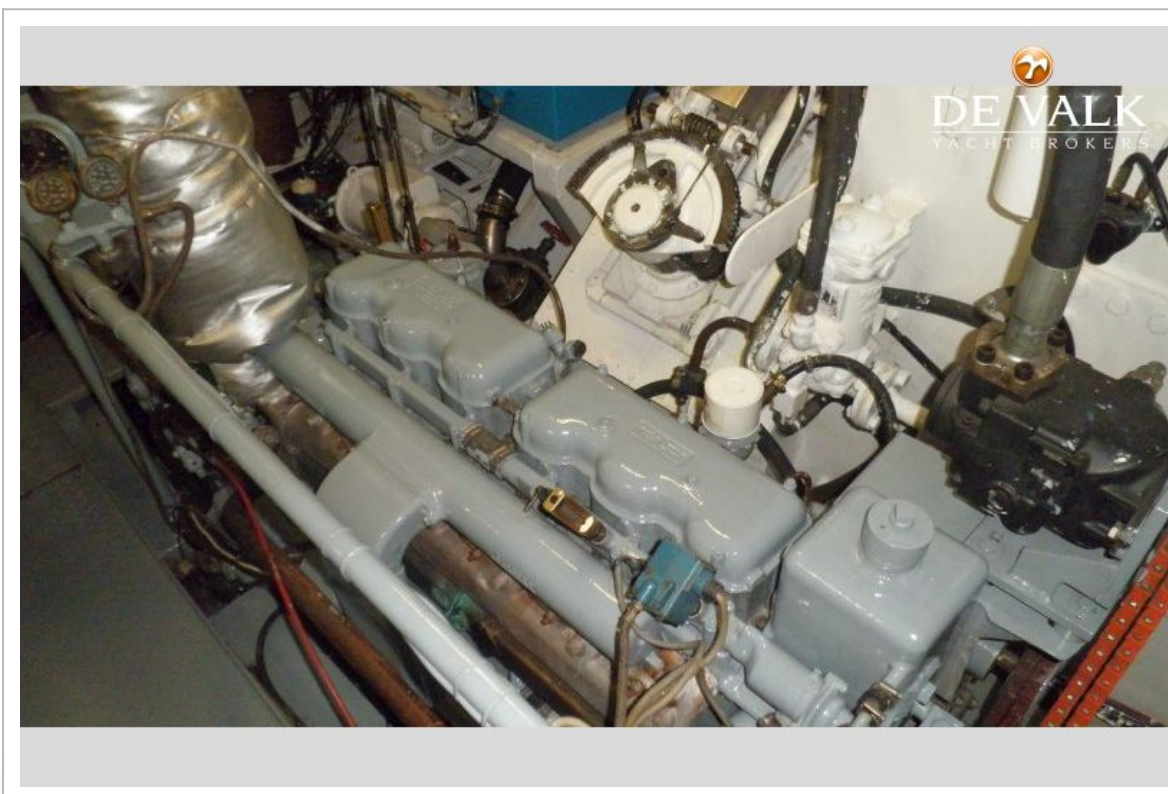
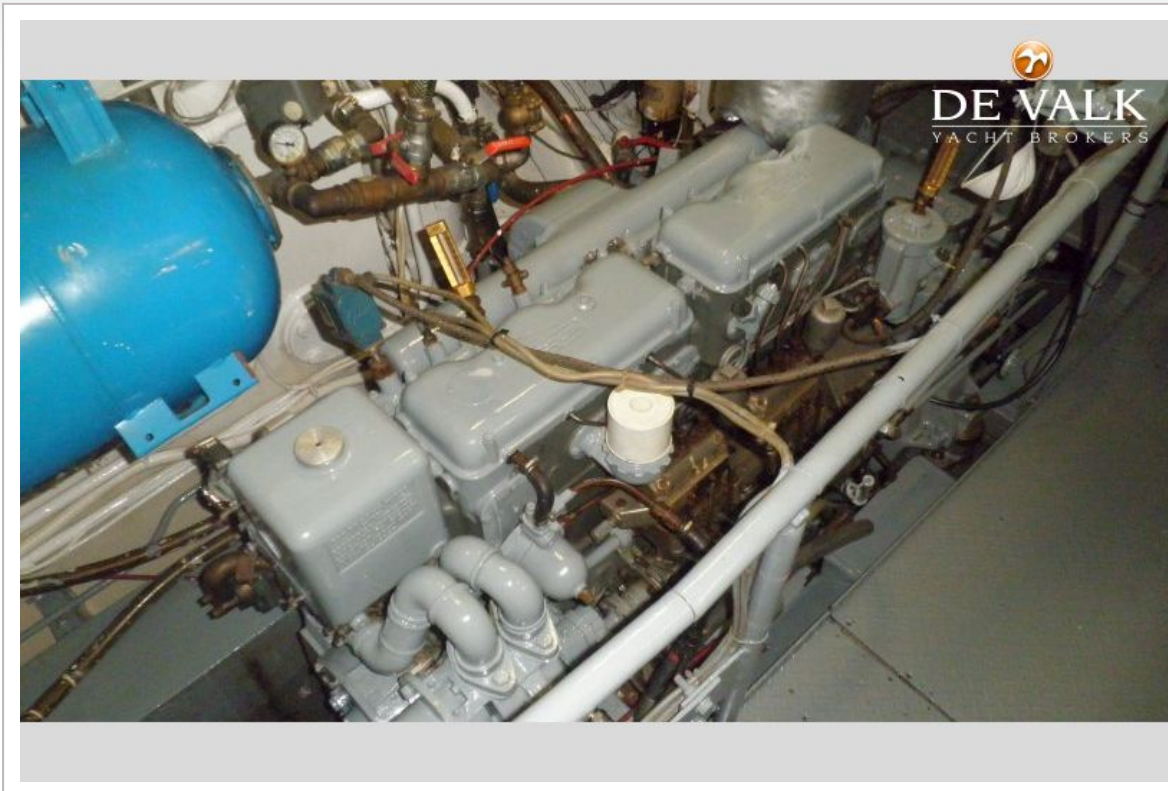
DUTCH STEEL MOTOR YACHT



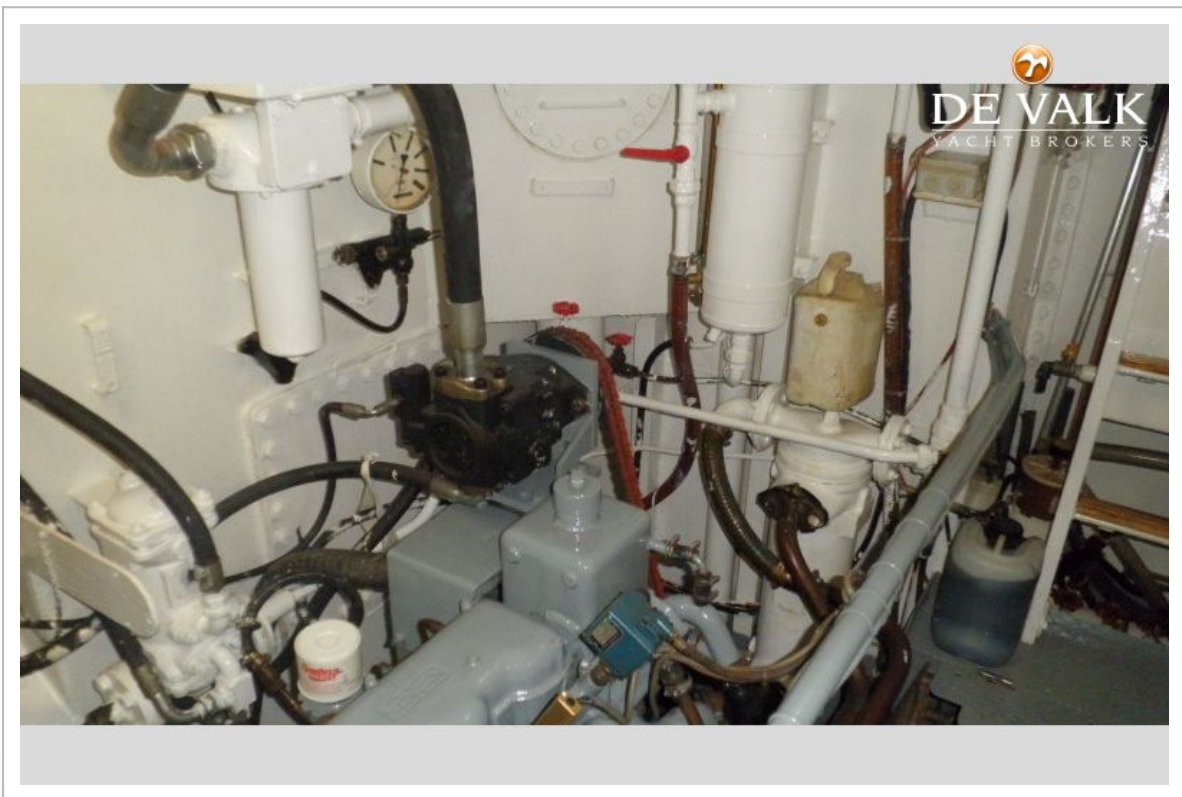
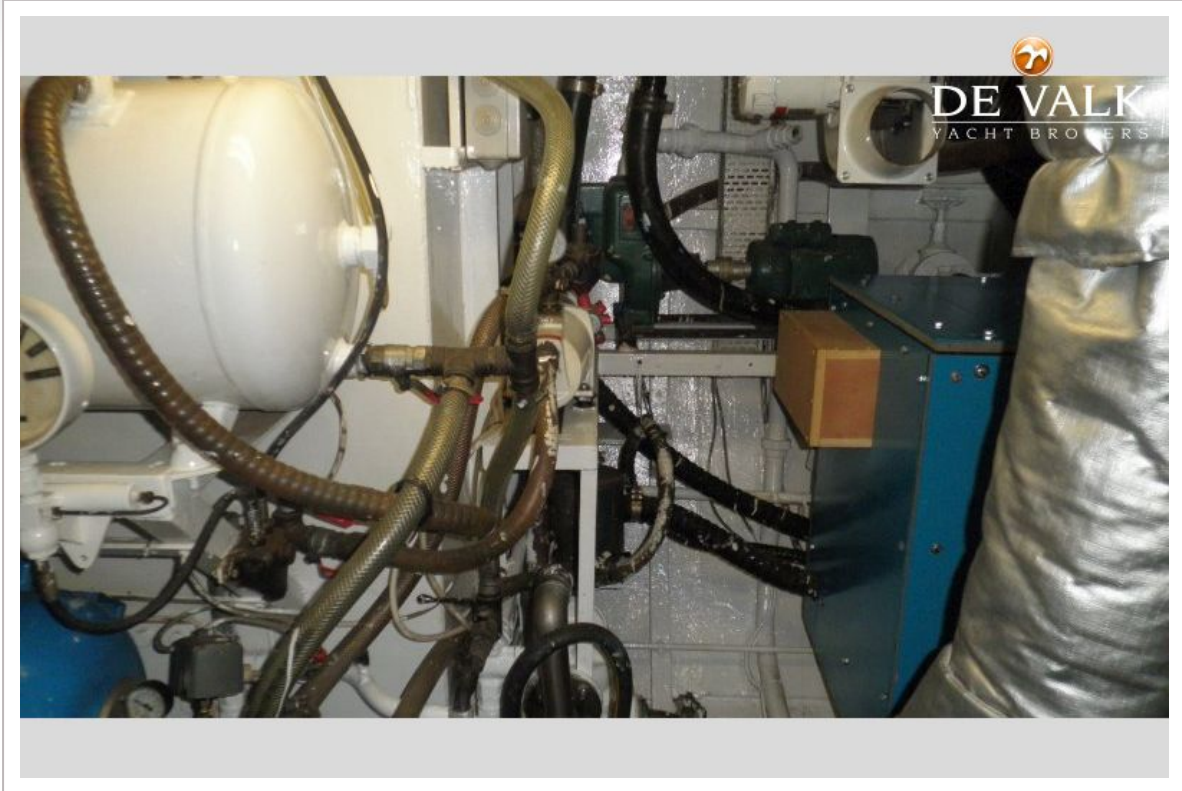
DUTCH STEEL MOTOR YACHT



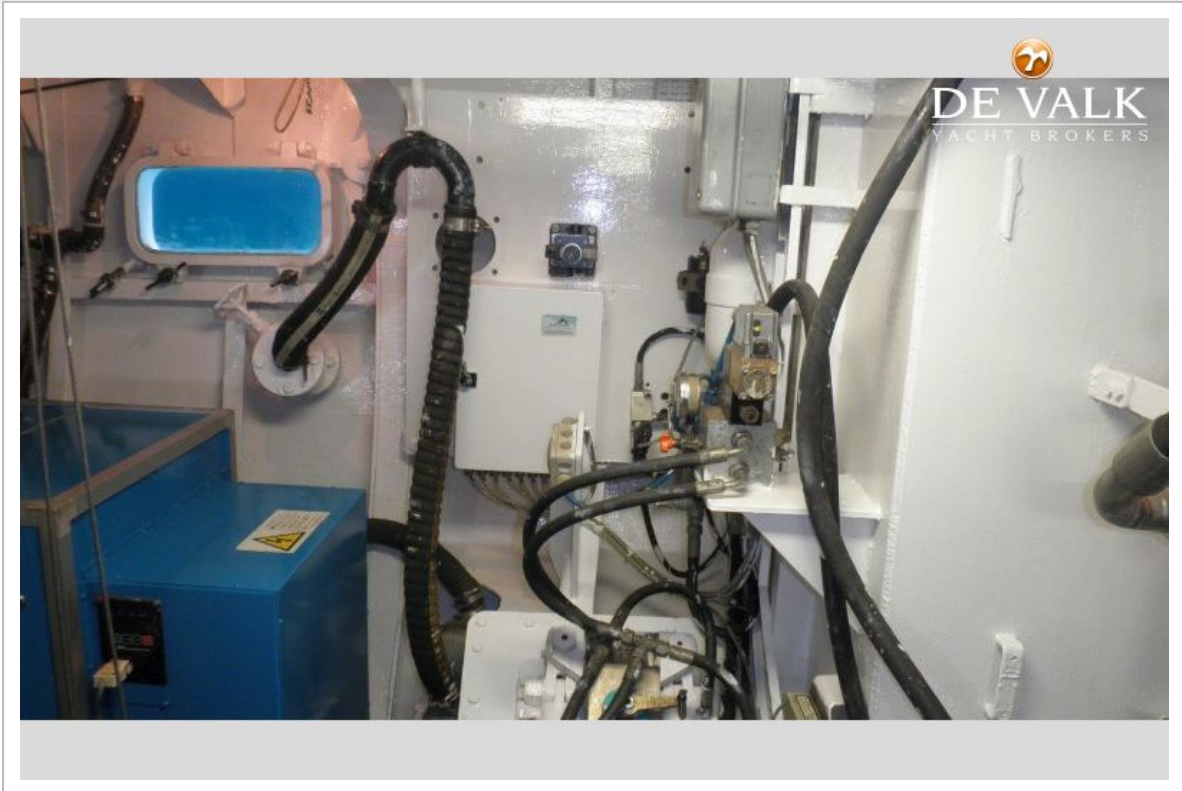
DUTCH STEEL MOTOR YACHT



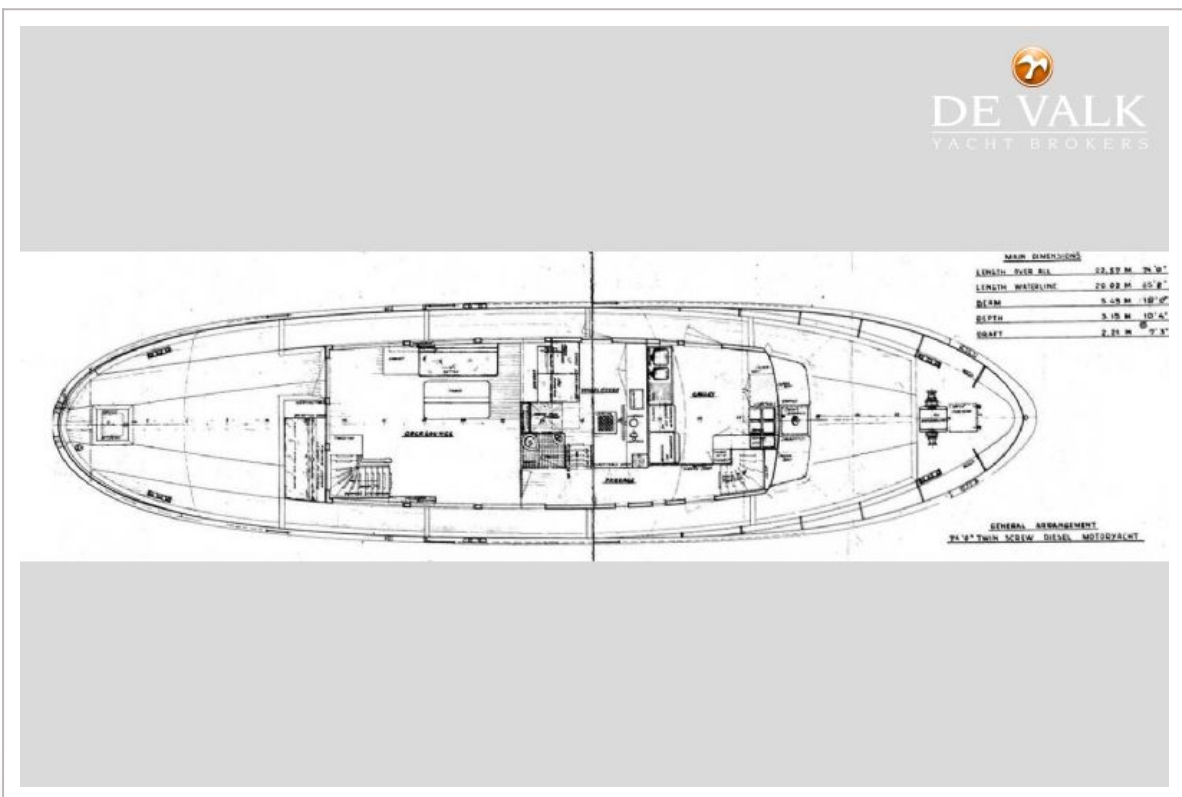
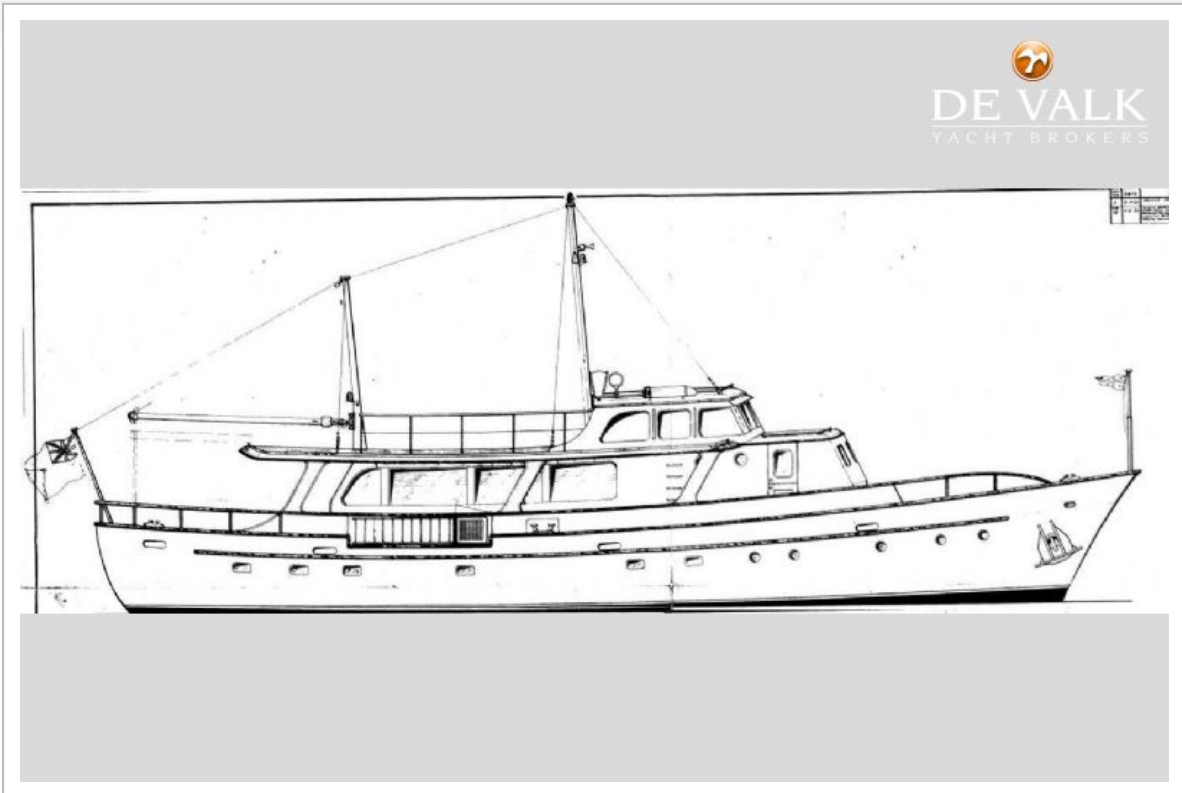
DUTCH STEEL MOTOR YACHT



DUTCH STEEL MOTOR YACHT



DUTCH STEEL MOTOR YACHT



DUTCH STEEL MOTOR YACHT

