



DE VALK
YACHT BROKERS



ALTENA 52 SD



DE VALK
YACHT BROKERS

ALTENA 52 SD

BROKER'S COMMENTS

The Altena 52' SD is an elegantly built vessel and has the CE-B mark. The aft deck is equipped with a fixed table and bench. Through a French window you enter the saloon, kitchen and wheelhouse. The latter is equipped with an elegant helm seat. Stairs take you down into the accommodation, which has 2 guest cabins and 2 guest bathroom. The owner's cabin has a private bathroom and a separate toilet.

Ian Pols

SPECIFICATIONS

Dimensions	16.00 x 4.85 x 1.20 (m)	Builder	Altena Yachting
Built	2019	Cabins	3
Material	Aluminium	Berths	5
Engine(s)	2 x Volvo Penta D6 diesel	Hp/Kw	2 x 370.00 (hp), 272.32 (kw)
Asking price	€ 1.099.000 (VAT Paid)	Lying	at sales office

CONTACT

Sales office	De Valk Altena	Telephone	+31 162 727211
Address	Keizersveer 3A 4941 TA Raamsdonksveer The Netherlands	E-mail	altena@devalk.nl

DISCLAIMER

These particulars are given in good faith as supplied but cannot be guaranteed.



ALTENA 52 SD

GENERAL

Model	ALTENA 52 SD
Type	motor yacht
LOA (m)	16,00
LWL (m)	14,90
Beam (m)	4,85
Draft (m)	1,20
Air draft (m)	3,38
Headroom (m)	2,00
Year built	2019
Builder	Altena Yachting
Country	The Netherlands
Designer	Theo Werner Yacht Design
Displacement (t)	20
CE norm	B
Hull material	aluminium
Hull colour	Aurora gold metallic
Hull shape	round-bilged
Superstructure material	aluminium
Deck material	aluminium
Deck finish	teak
Antifouling (year)	2023
Portholes	stainless steel 8x
Insulation	foam
Fuel tank (litre)	aluminium 3750 in 3 tanks
Level indicator (fuel tank)	yes
Freshwater tank (litre)	aluminium 1850
Level indicator (freshwater)	yes
Blackwater tank (litre)	aluminium 800
Level indicator (blackwater)	yes
Wheel steering	electric



Inside helm position yes

ACCOMMODATION

Cabins	3
Berths	5
Interior	pearwood
Floor	parquet
Open cockpit	yes
Heating	central heating
Heating 2	floor heating
Air-conditioning	yes
Navigation center	yes
Dining room	yes
Galley	yes
Sink	stainless steel
Cooker	induction Miele
Microwave/oven combi	Miele
Fridge	yes
Freezer	Liebherr
Wine cooler	Liebherr
Hot water system	on central heating
Water pressure system	electrical
Dishwasher	Miele
Hot water tap	yes
Owners cabin	French bed
Bed length (m)	2,10
Wardrobe	hanging/drawers/shelves
Bathroom	en suite
Toilet	en suite
Toilet system	electric
Wash basin	in the bathroom



ALTENA 52 SD

Shower	en suite
Guest cabin 1	twin single
Bed length (m)	2,00
Wardrobe	hanging/drawers/shelves
Bathroom	en suite
Toilet	en suite
Toilet system	electric
Wash basin	in the bathroom
Shower	en suite
Guest cabin 2	single bed
Bed length (m)	2,00
Wardrobe	hanging/drawers/shelves
Bathroom	en suite
Toilet	en suite
Toilet system	chemical
Wash basin	in the bathroom
Shower	en suite
Washing machine/dryer combi	Siemens
Extra info	Electrick plisse curtains all around salon

MACHINERY

No of engines	2
Make	Volvo Penta
Type	D6
HP	370
kW	272.32
Fuel	diesel
Maximum speed (kn)	20
Engine cooling system	freshwater heat exchanger
Drive	shaft
Engine controls	electrical Including Volvo Joystick control



Gearbox	hydraulic
Bowthruster	hydraulic Sidepower proportional with remote
Sternthruster	hydraulic Sidepower proportional with remote
Propeller type	fixed
Propeller shaft material	stainless steel
Manual bilge pump	yes
Electric bilge pump	yes
Bilge alarm	yes
Electrical installation	12 V 24 V 220 V
Generator	silent separator Onan 11 Kva
Generator 2	silent separator Onan 7,5 Kva
Service battery	4x Mastervolt MLI Ultra Lithium 24/5000
Battery charger/inverter	2 x Master combi pro 24/3500-100
Diode battery combiners	yes
Shorepower	with cable 2x
Insulation transformer	yes
Watermaker	yes
Extra info	2 x Alpha pro 110

NAVIGATION

Compass	Garmin
Depth sounder	Garmin
Log	Garmin
Windset	Garmin
Repeater	Garmin
VHF	2x Garmin
Autopilot	Garmin
Rudder angle indicator	Garmin
GPS	Garmin
Plotter/GPS	Garmin, PC Navigo, Navionics
Electronic chart(s)	yes



AIS transceiver	yes
Navigation lights	yes
Extra info	Yachtcontrol Bus system for all functions

EQUIPMENT

Fixed hardtop	yes
Sun awning	yes
Window cover	yes
Cockpit cushions	yes
Cockpit table	yes
Cockpit chairs	yes
Bathing platform	yes
Boarding ladder	One on each side rotating hydraulic
Other ground tackle	2 spud poles
Deck wash	yes
Sea railing	stainless steel
Railing side opening gates	yes
Lifejackets	yes
Lifebuoy	yes
Wiper	yes
Horn	yes
Fenders	yes
Mooring lines	yes
Spare parts	yes
Tools	yes
TV	yes
Satellite	yes
Radio	yes
Surround Sound System	yes
Cockpit speakers	yes
Speakers in salon	yes



Fire extinguisher	yes
Extinguisher in engine room	yes
Auto extinguisher system	yes



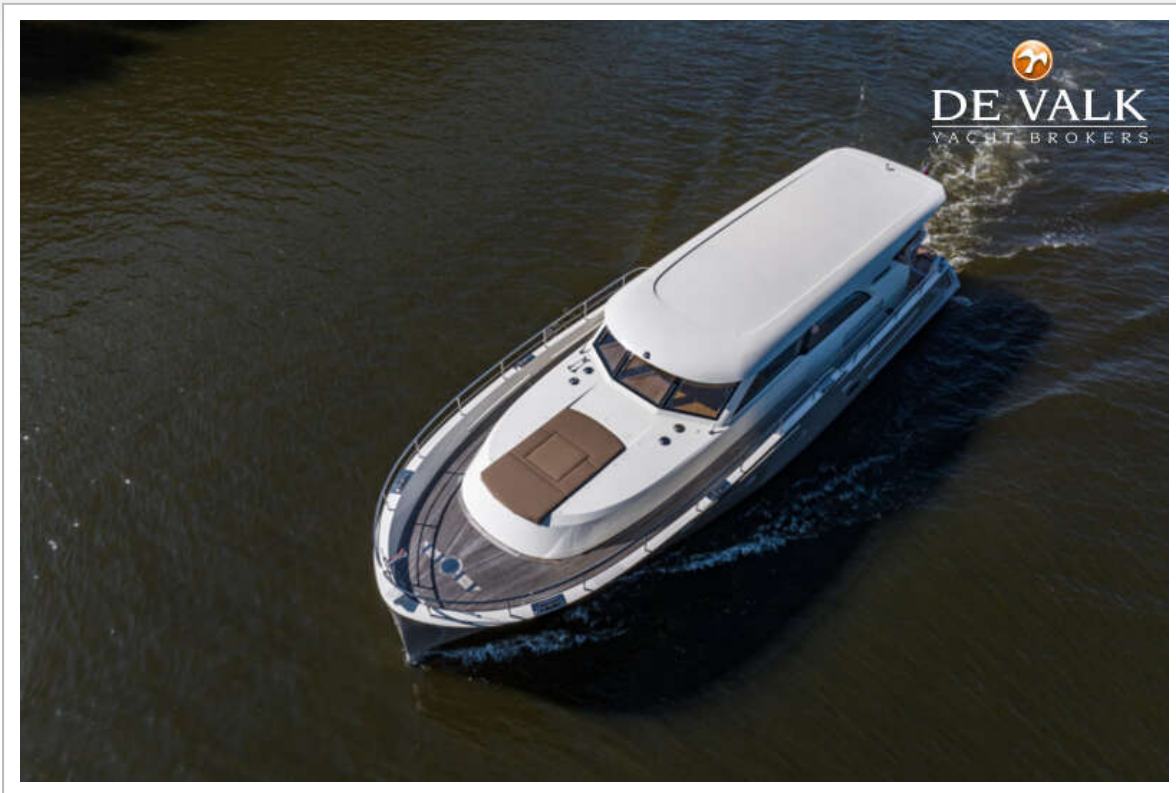
ALTENA 52 SD



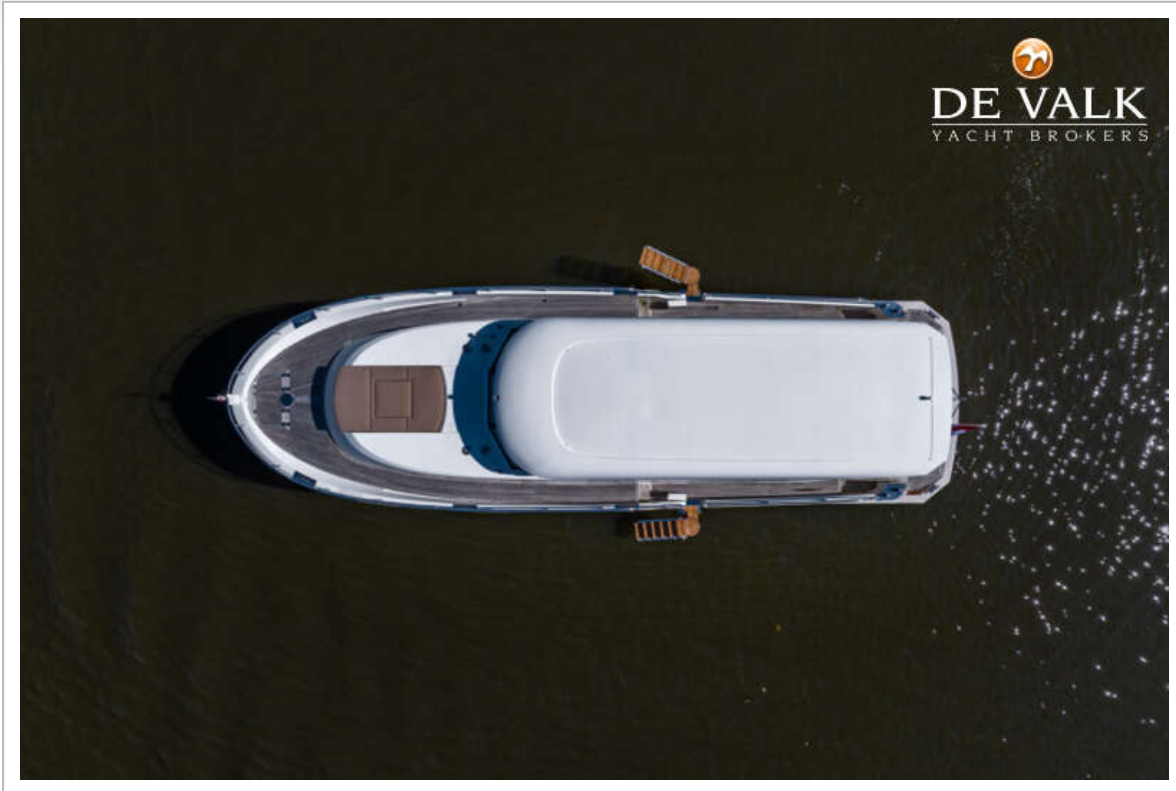
ALTENA 52 SD



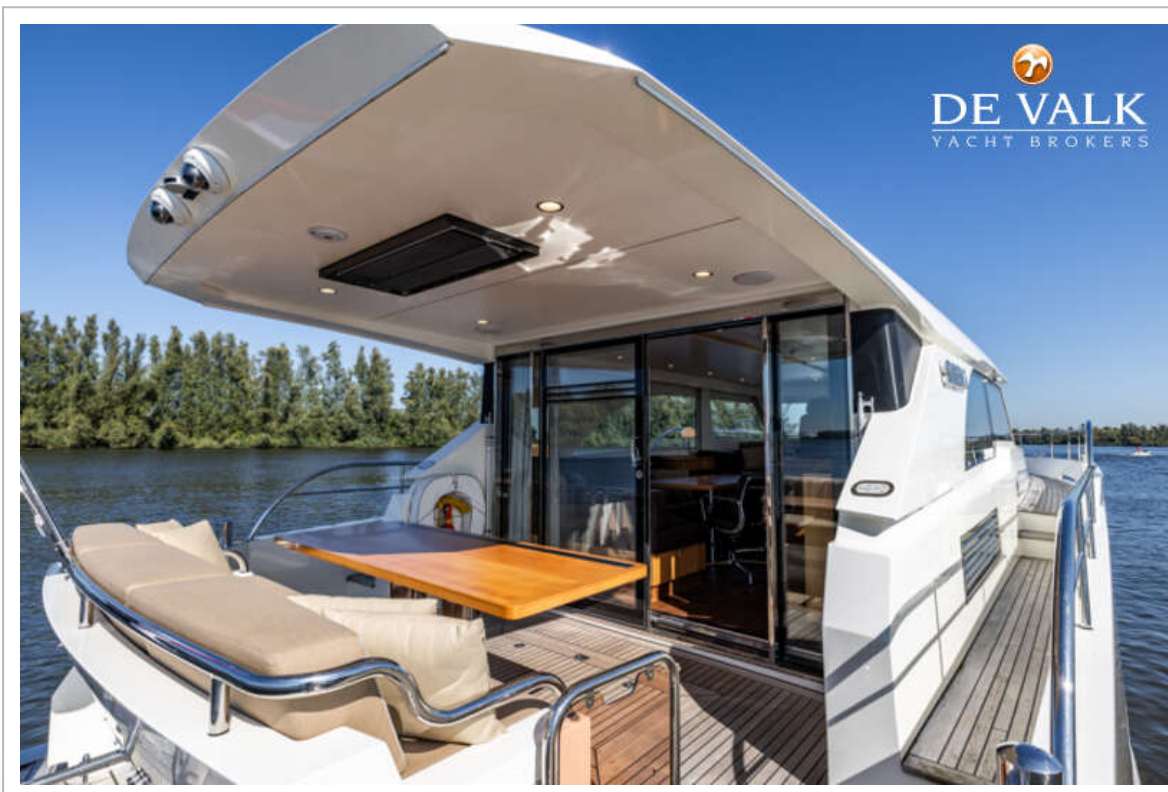
ALTENA 52 SD



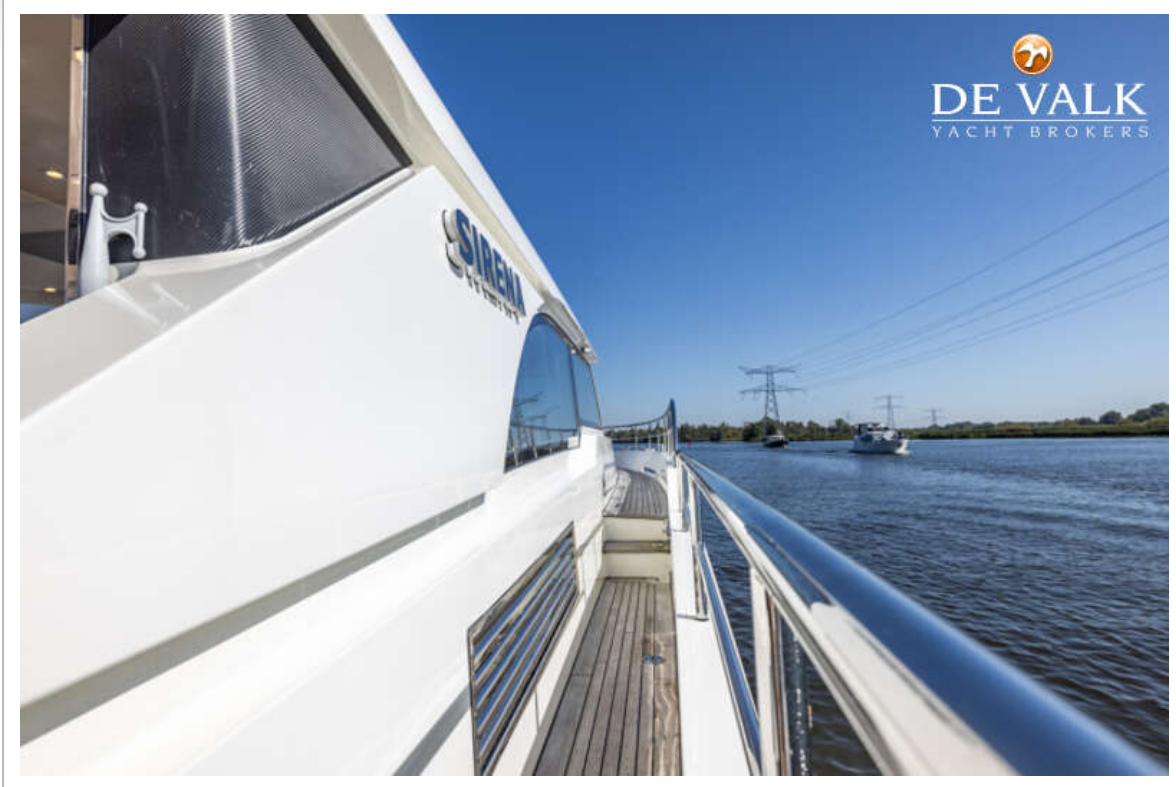
ALTENA 52 SD



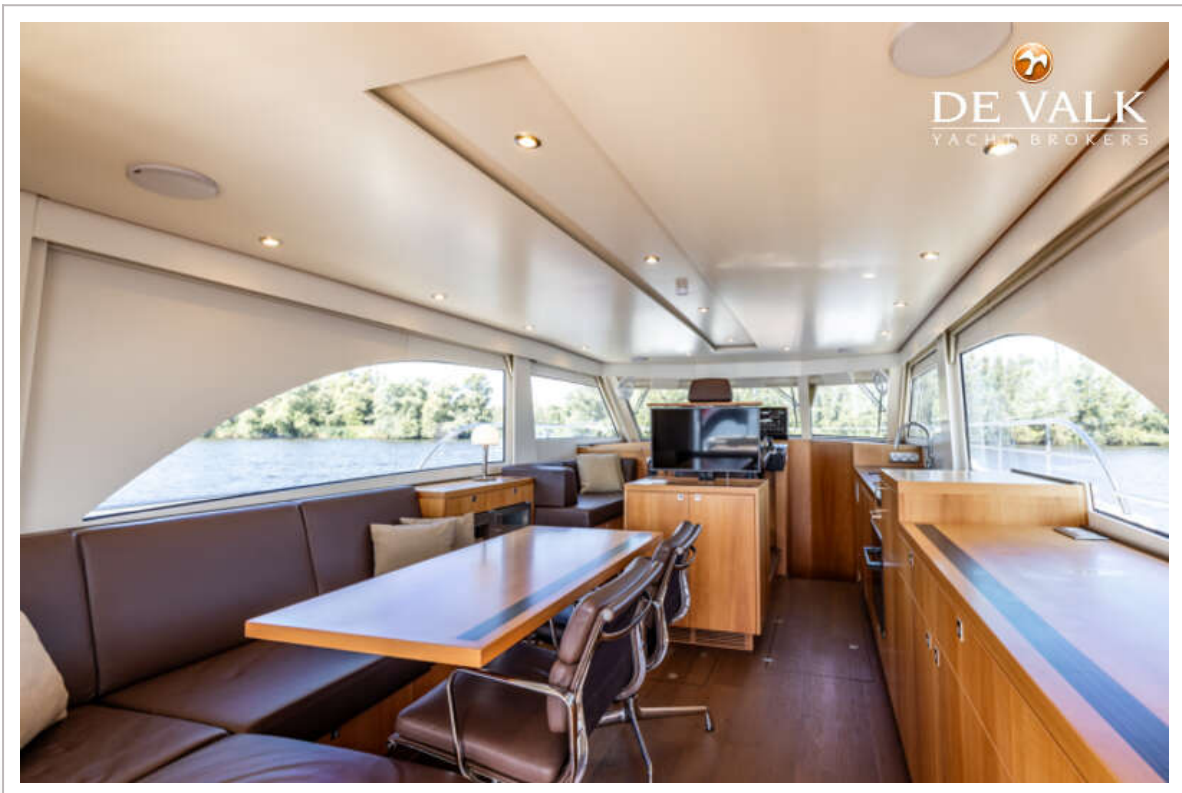
ALTENA 52 SD



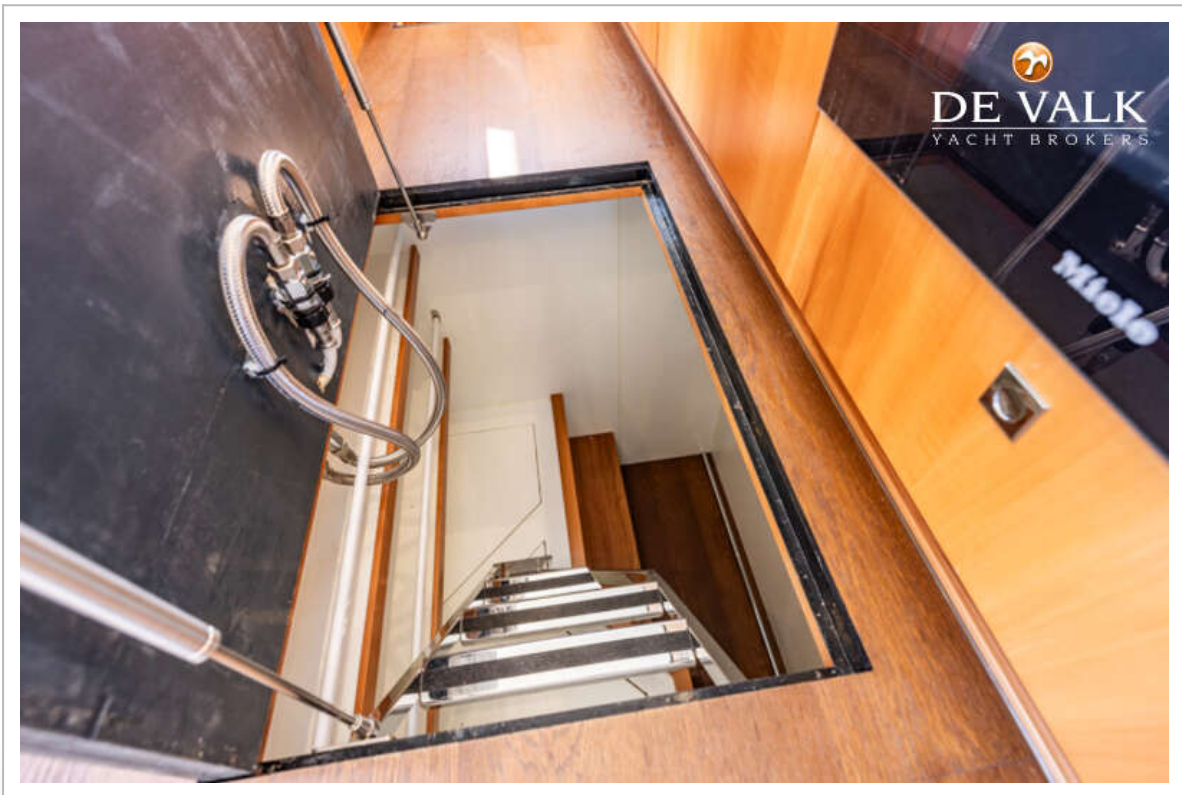
ALTENA 52 SD



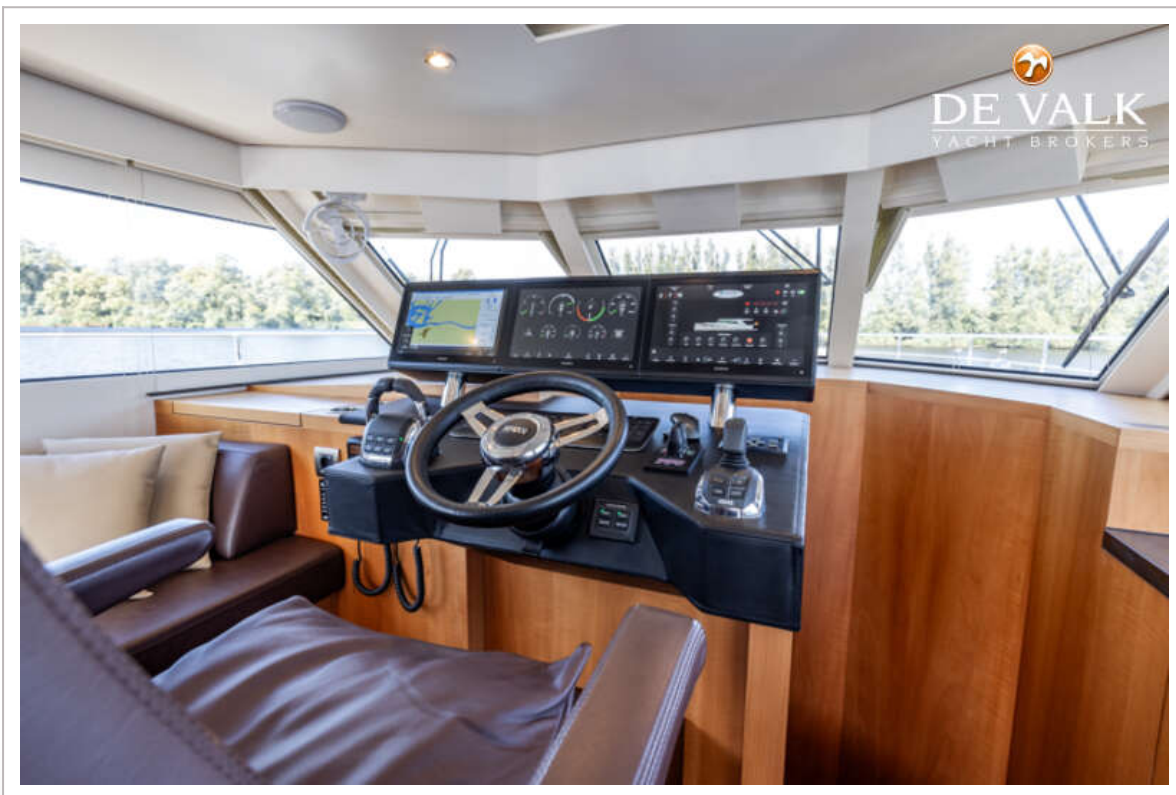
ALTENA 52 SD



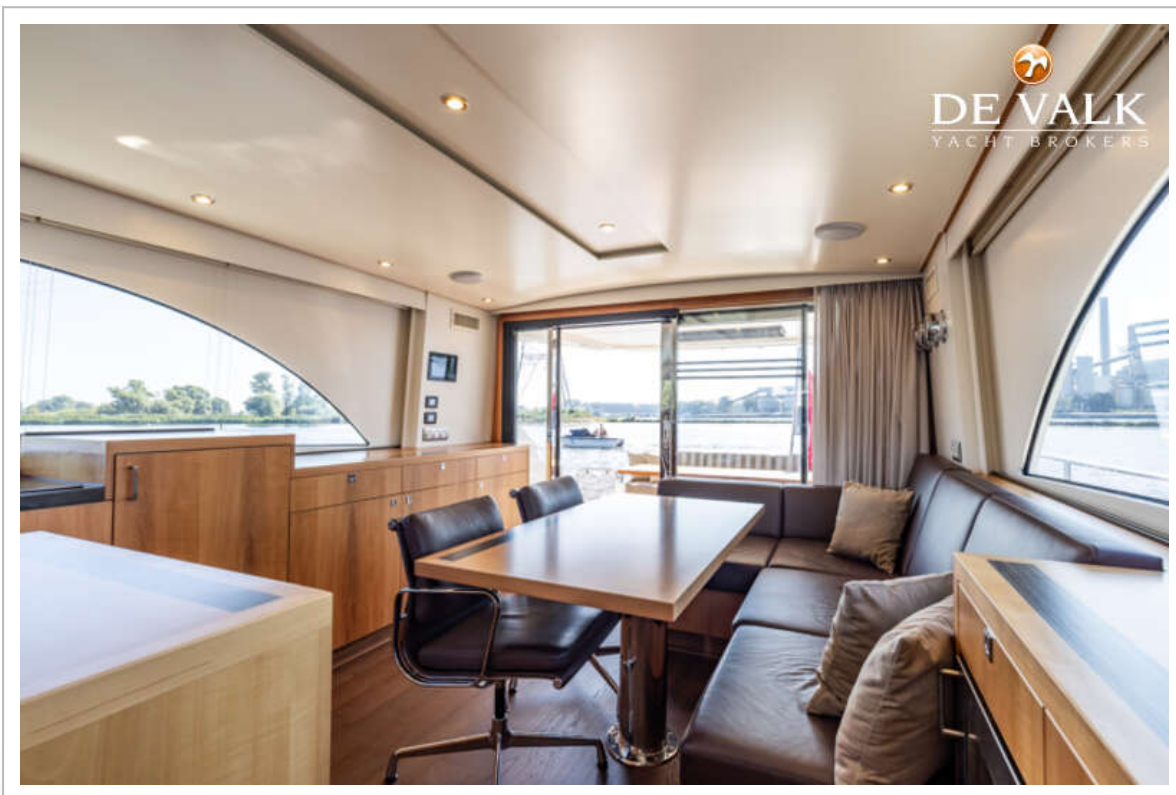
ALTENA 52 SD



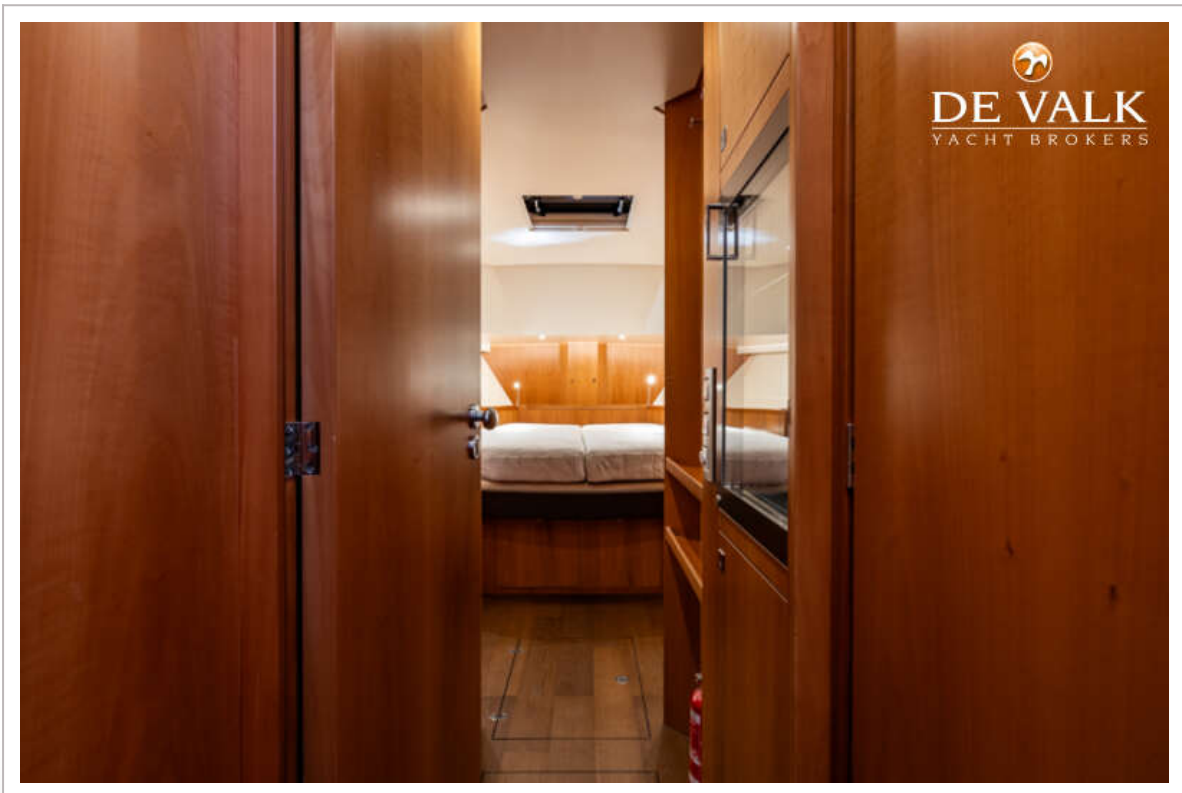
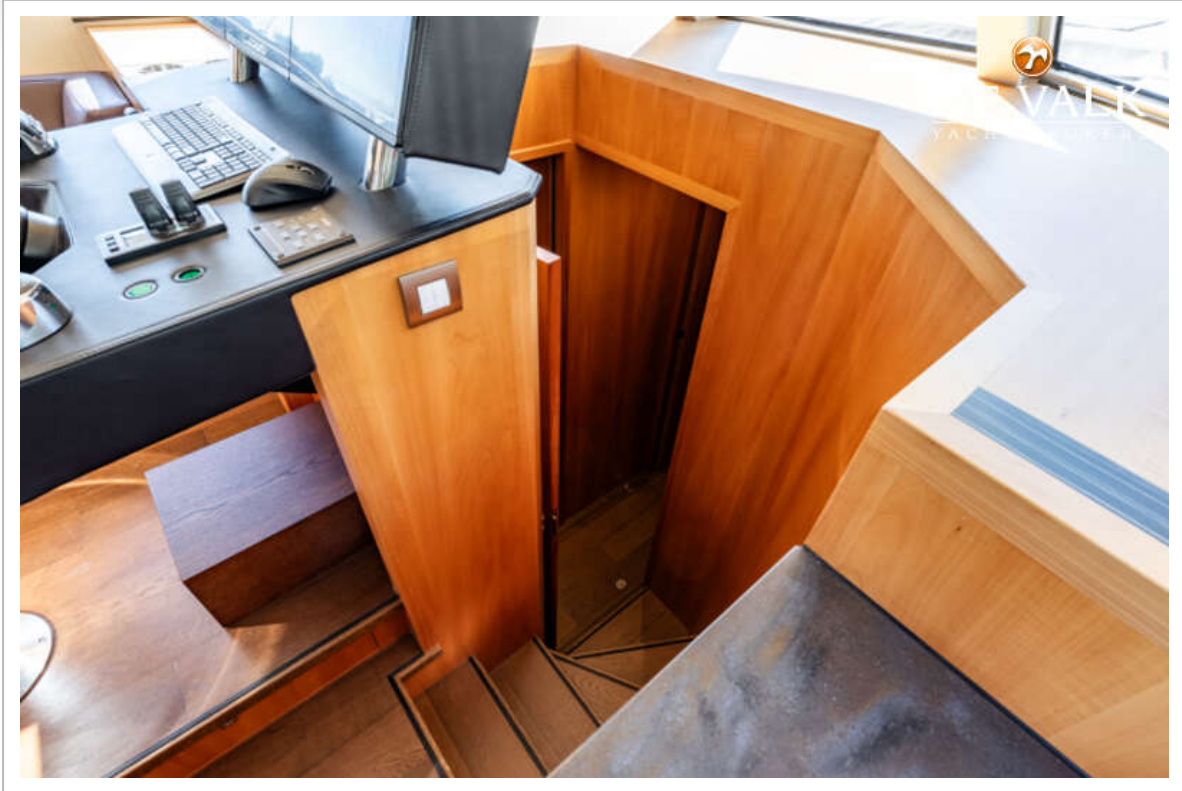
ALTENA 52 SD



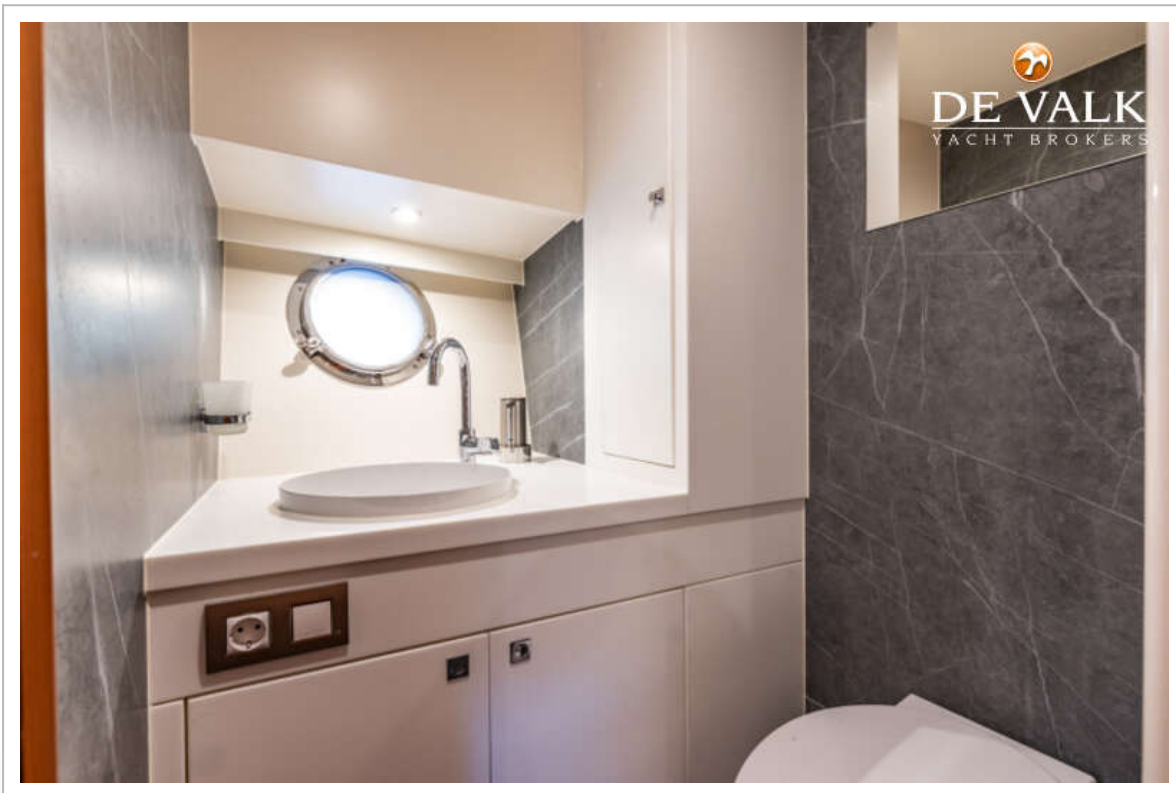
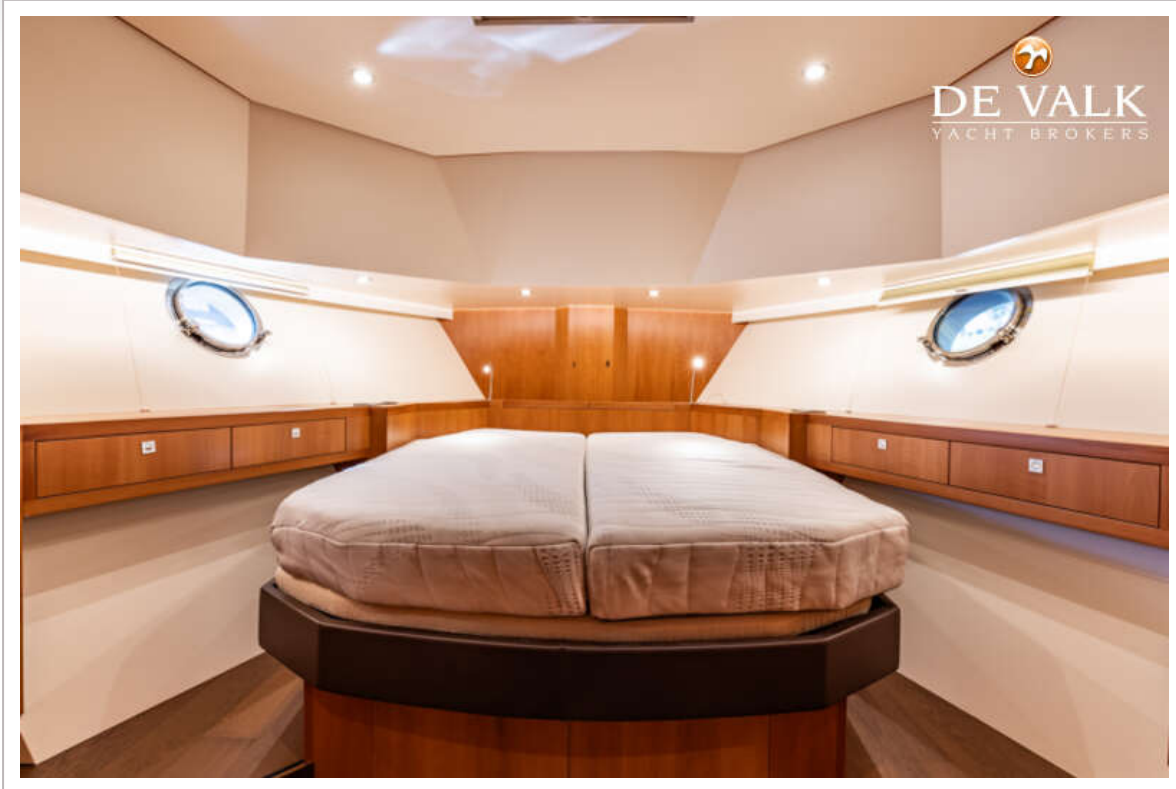
ALTENA 52 SD



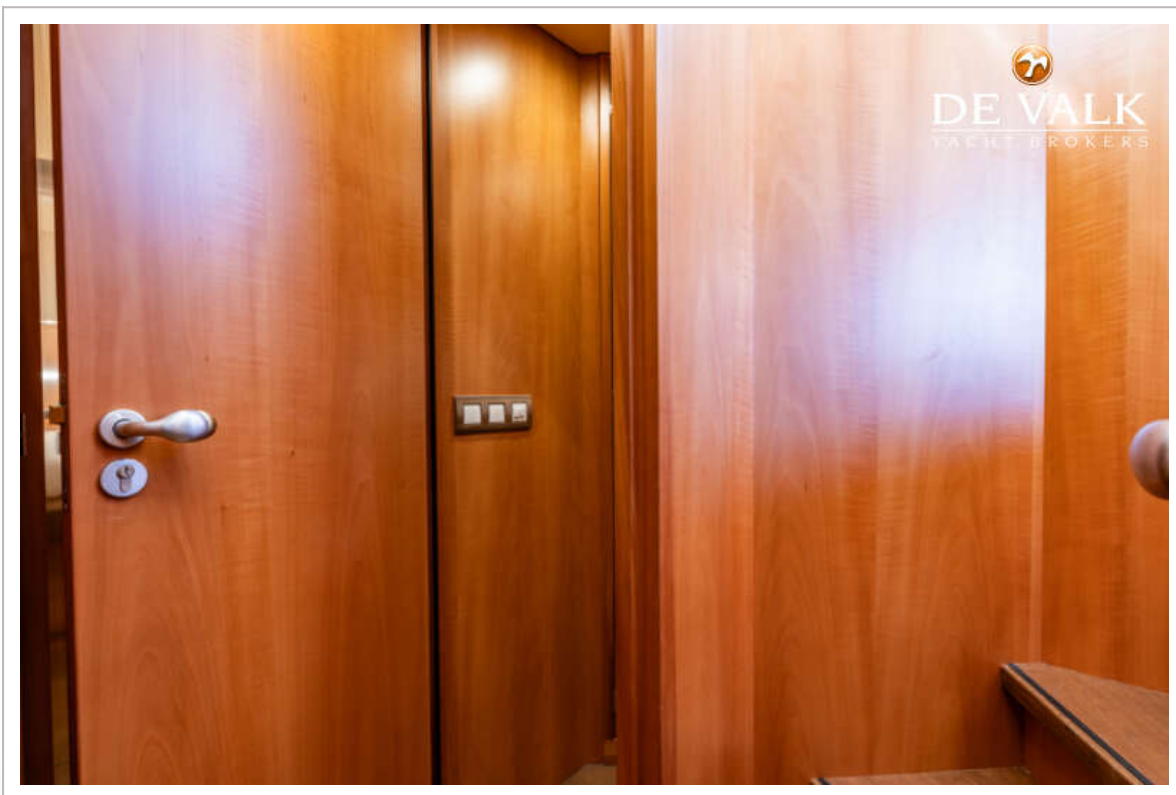
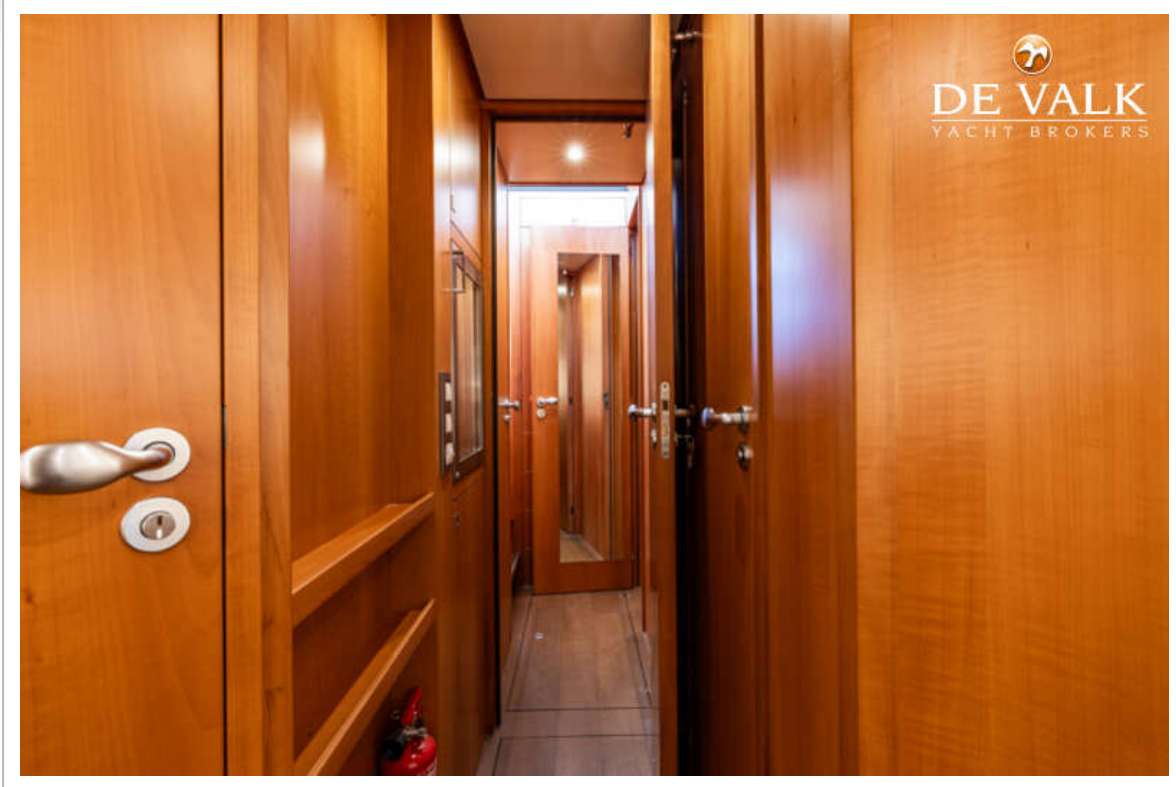
ALTENA 52 SD



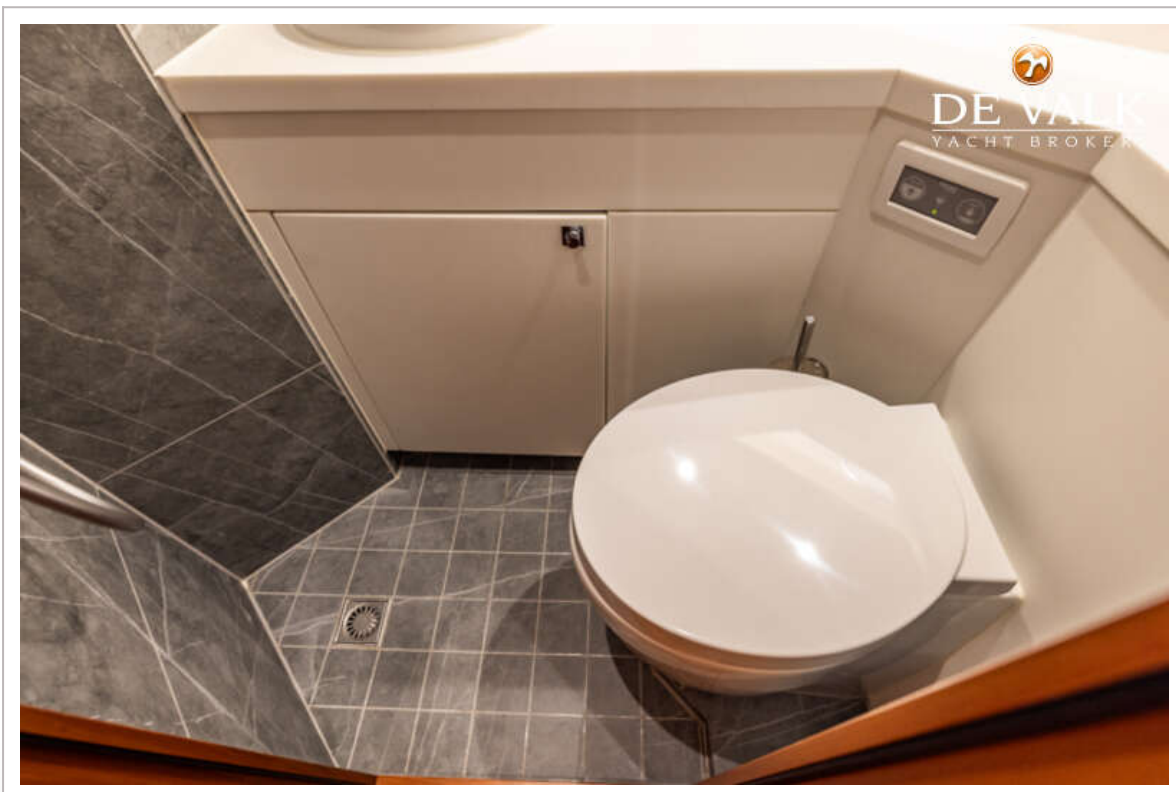
ALTENA 52 SD



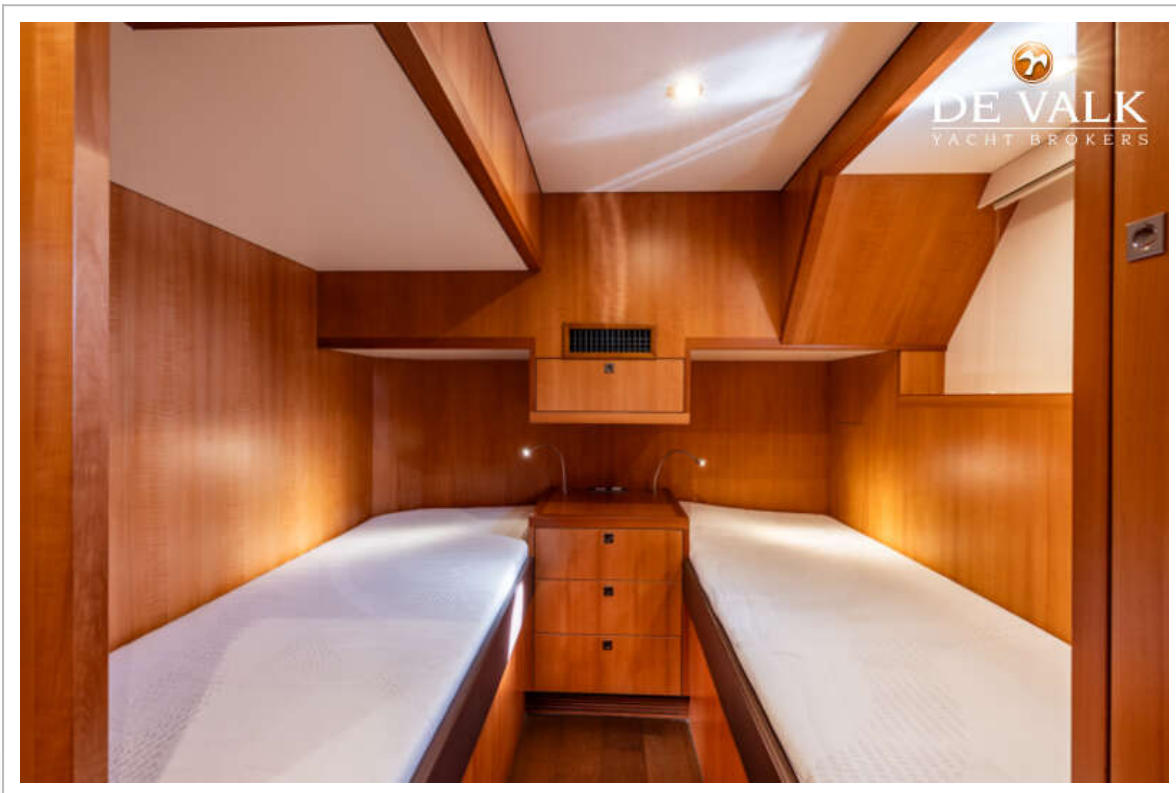
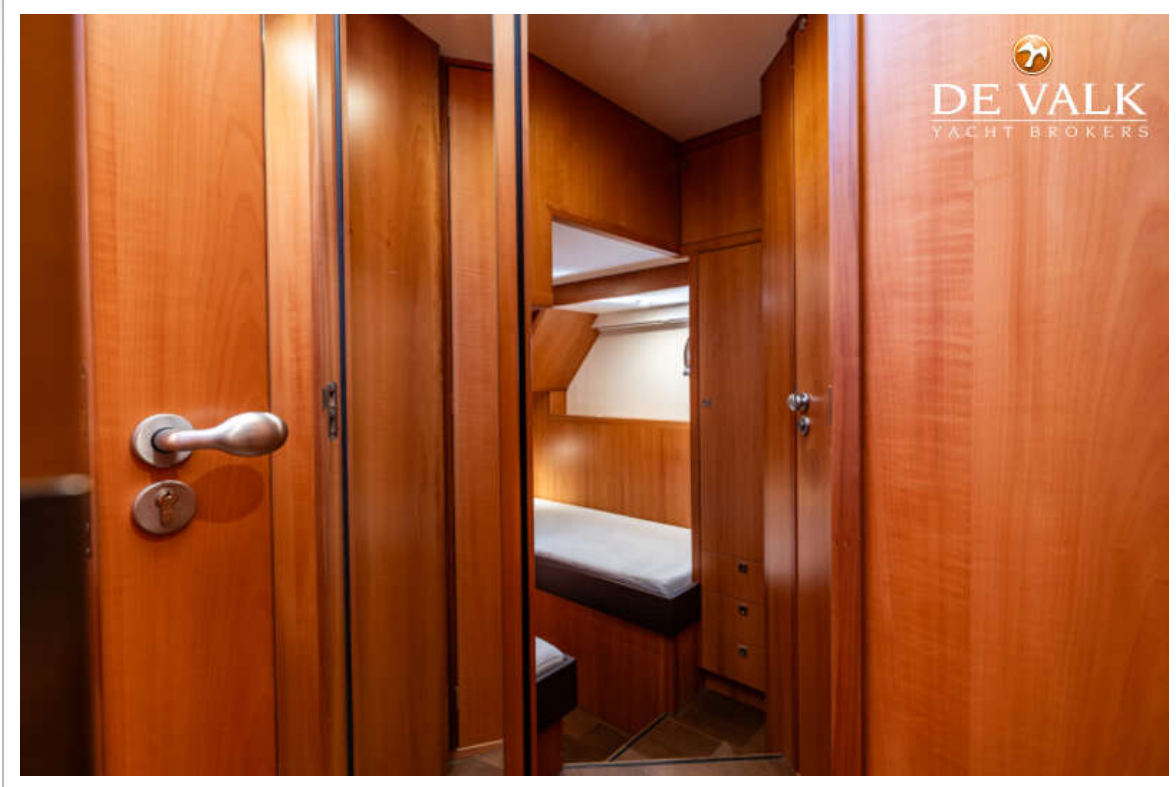
ALTENA 52 SD



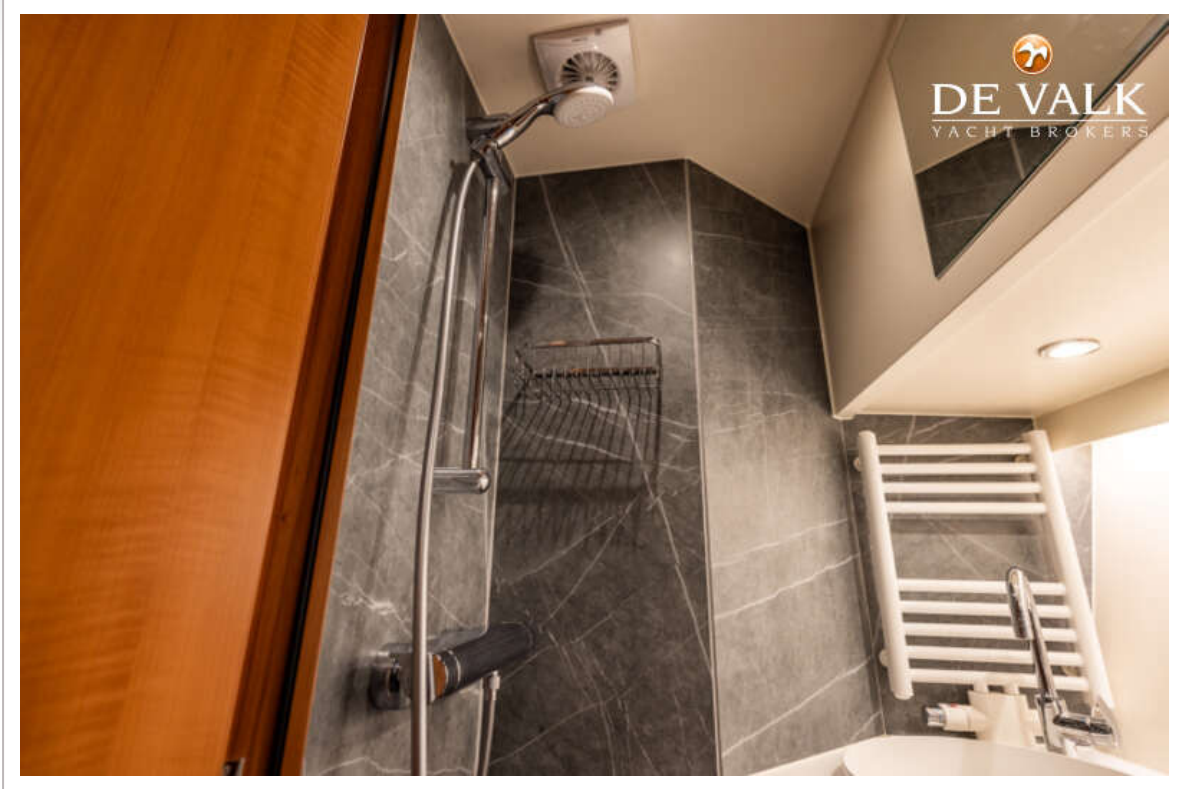
ALTENA 52 SD



ALTENA 52 SD



ALTENA 52 SD



ALTENA 52 SD



ALTENA 52 SD

