



DE VALK  
YACHT BROKERS



LAGOON 380 S2



DE VALK  
YACHT BROKERS

## BROKER'S COMMENTS

Really ready to go; this immaculate never chartered Lagoon 380 S2 is in excellent shape. All service done in 2017, including polishing, anti fouling and new batteries for the two installed bow thrusters. This 3 cabin lay-out is having a very clean and neat interior, a good electronic navigation package, a dinghy plus outboard and a carbon fibre gangway. We know the boat and owner from new. This is a superb example of the popular Lagoon 380 S2 series. The only thing you need to do: just fill the fridge and sail away!

*Willem Koopmans*

## SPECIFICATIONS

<b>Dimensions</b>	11.55 x 6.53 x 1.15 (m)	<b>Builder</b>	Lagoon
<b>Built</b>	2006	<b>Cabins</b>	3
<b>Material</b>	GRP	<b>Berths</b>	8
<b>Engine(s)</b>	2 x Volvo D1-30 diesel	<b>Hp/Kw</b>	2 x 30.00 (hp), 22.05 (kw)
<b>Asking price</b>	sold (VAT )	<b>Lying</b>	contact sales office

## CONTACT

<b>Sales office</b>	De Valk Costa Blanca	<b>Telephone</b>	+34965021569
<b>Address</b>	Costa Blanca Region 03730 Javea Alicante Spain	<b>E-mail</b>	costablanca@devalk.nl

## DISCLAIMER

These particulars are given in good faith as supplied but cannot be guaranteed.



## GENERAL

<b>Model</b>	LAGOON 380 S2
<b>Type</b>	Catamaran sailing yacht
<b>LOA (m)</b>	11,55
<b>LWL (m)</b>	11,50
<b>Beam (m)</b>	6,53
<b>Draft (m)</b>	1,15
<b>Headroom (m)</b>	1,95
<b>Year built</b>	2006
<b>Builder</b>	Lagoon
<b>Country</b>	France
<b>Designer</b>	Van Peteghem & Prévost
<b>Displacement (t)</b>	7,3
<b>CE norm</b>	A
<b>Hull material</b>	GRP
<b>Hull colour</b>	white
<b>Hull shape</b>	Catamaran
<b>Superstructure material</b>	GRP
<b>Deck material</b>	GRP
<b>Deck finish</b>	non-skid moulded in
<b>Cockpit deck finish</b>	non-skid moulded in
<b>Antifouling (year)</b>	June 2017
<b>Deckhatch</b>	yes
<b>Portholes</b>	aluminium
<b>Fuel tank (litre)</b>	100
<b>Fuel tank 2 (litre)</b>	100
<b>Level indicator (fuel tank)</b>	yes
<b>Freshwater tank (litre)</b>	350
<b>Level indicator (freshwater)</b>	yes
<b>Blackwater tank (litre)</b>	2x of each 83 L
<b>Level indicator (blackwater)</b>	yes



Wheel steering	yes
Emergency tiller	yes
More info on paintwork	New polish June 2017
Extra info	New trampoline nets (UV resistable)

## ACCOMMODATION

Cabins	3
Berths	8
Interior	oak Alpi
Floor	woodprint
Pilot house/deck saloon	yes
Headroom saloon (m)	2,12
Heating	diesel ducted hot air Webasto
Navigation center	yes
Chart table	2x
Aft Cabin	2x
Dinette	yes
Dinette to convert into berth	yes
Sliding door to cockpit	yes
Galley	yes
Countertop	Duropal
Sink	stainless steel Double
Cooker	calor gas 3 burner stove
Oven	yes
Fridge	With freezing area
Hot water system	220V + engine
Water pressure system	yes
Manual and/or foot pump	Salt water
Owners cabin	double bed
Bed length (m)	2 m (by 1,60)
Wardrobe	hanging and shelves



<b>Bathroom</b>	en suite
<b>Toilet</b>	en suite
<b>Toilet system</b>	manual
<b>Wash basin</b>	in the bathroom
<b>Shower</b>	en suite
<b>Guest cabin 1</b>	double bed
<b>Bed length (m)</b>	2 m (by 1,60)
<b>Wardrobe</b>	hanging and shelves
<b>Bathroom</b>	shared
<b>Toilet</b>	shared
<b>Toilet system</b>	manual
<b>Wash basin</b>	in the bathroom
<b>Shower</b>	shared
<b>Guest cabin 2</b>	yes
<b>Bed length (m)</b>	2 m (by 1,56/0,9)
<b>Wardrobe</b>	shelves
<b>Bathroom</b>	shared
<b>Toilet</b>	shared
<b>Toilet system</b>	manual
<b>Wash basin</b>	in the bathroom
<b>Shower</b>	shared

## MACHINERY

<b>No of engines</b>	2
<b>Make</b>	Volvo
<b>Type</b>	D1-30
<b>HP</b>	30,00
<b>kW</b>	22,05
<b>Fuel</b>	diesel
<b>Year installed</b>	2006
<b>Maximum speed (kn)</b>	8,5



<b>Cruising speed (kn)</b>	7
<b>Consumption (l/hr)</b>	4
<b>Engine hours</b>	2000
<b>Engine cooling system</b>	freshwater heat exchanger
<b>Saildrive seal</b>	2 x replaced 2015
<b>Bowthruster</b>	2x with new batteries
<b>Manual bilge pump</b>	yes
<b>Electric bilge pump</b>	yes
<b>Generator</b>	3,5 kW
<b>Batteries</b>	yes
<b>Start battery</b>	2x
<b>Service battery</b>	3x 120 Amp
<b>Bowthruster battery</b>	2x
<b>Battery charger</b>	Mastervolt
<b>Solar panel</b>	2x, stainless steel frame
<b>Shorepower</b>	with cable

## NAVIGATION

<b>Compass</b>	Plastimo
<b>Depth sounder/log</b>	RayMarine ST60
<b>Windset</b>	RayMarine ST60
<b>VHF</b>	Simrad RS82
<b>Autopilot</b>	RayMarine ST6001
<b>Radar/GPS/plotter</b>	RayMarine C-120 and C 90, 2kW radome
<b>Weather receiver</b>	NASA
<b>Navtex</b>	ICS Nav6
<b>PC connection</b>	SSB pactor modem
<b>AIS transponder</b>	Connected to RayMarine screen C120
<b>Transmitter</b>	SSB, Icom 150 Watt
<b>Navigation lights</b>	yes
<b>Searchlight</b>	yes



Extra info	Removable SSB antenna
Extra info	NASA AIS radar

## EQUIPMENT

Sprayhood	yes
Bimini	yes
Cockpit cushions	yes
Cockpit table	yes
Boarding ladder	stainless steel
Transom door	yes
Gangway	2,6 m, composite (2016)
Deck shower	yes
Anchor	yes
Anchor chain	yes
Windlass	yes
Deck wash	Salt water
Dinghy	Zodiac, fixed V bottom
Outboard	Yamaha 4pk (new)
Outboard support	yes
Davits	stainless steel
Davits controls	yes
Life raft	container 8 persons
Last life raft survey	yes
Lifejackets	Self inflatable
Safety lines on deck	yes
Radar reflector	yes
Fenders	yes
Mooring lines	yes
TV	yes
TV receiver	Antenna in mast
Radio-cd player	Plus bluetooth



Cockpit speakers	yes
Speakers in salon	yes
Clock - barometer	yes

## RIGGING

Mainsail	yes
Mainsail cover	yes
Fully battened mainsail	yes
Genoa	yes
Genoa furler	yes
Gennaker	Color: yellow/blue
Reefing System	quick-one-line-reefing
Primary sheet winch	Electric
Genoa sheetwinches	2x

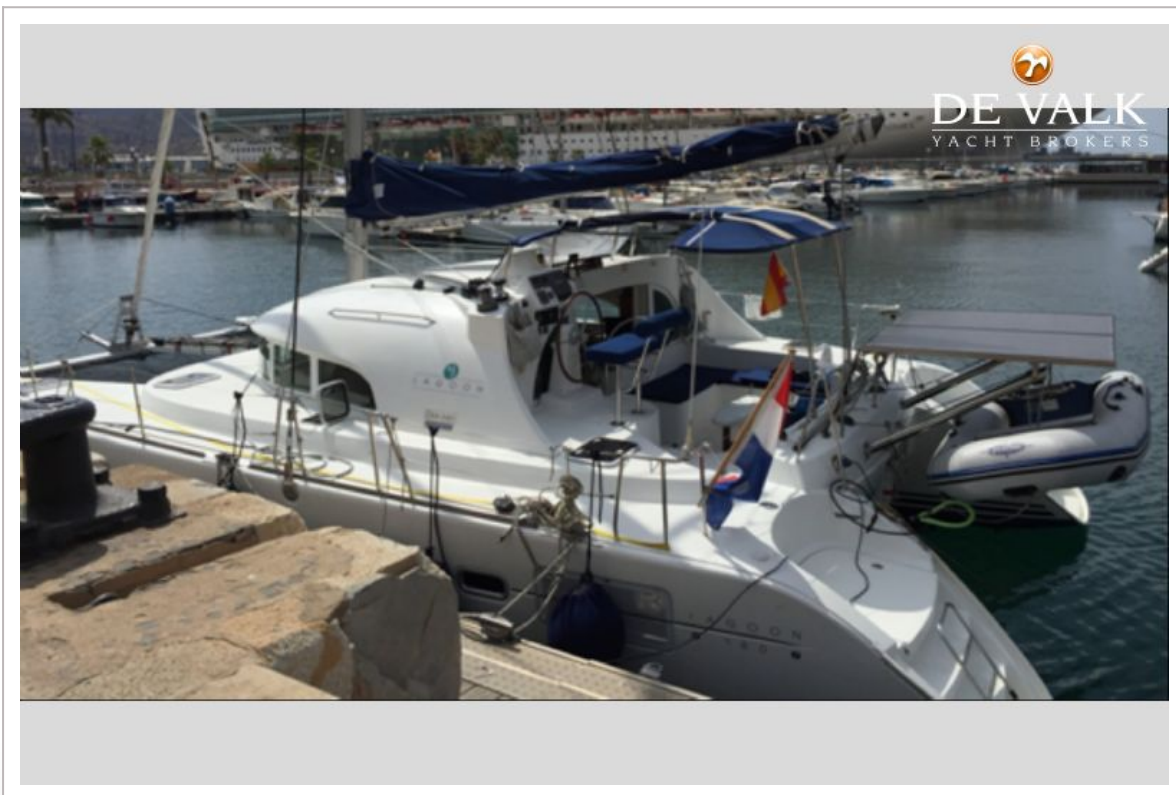




# LAGOON 380 S2



# LAGOON 380 S2



# LAGOON 380 S2



# LAGOON 380 S2



# LAGOON 380 S2



# LAGOON 380 S2



# LAGOON 380 S2



# LAGOON 380 S2





# LAGOON 380 S2



# LAGOON 380 S2



# LAGOON 380 S2





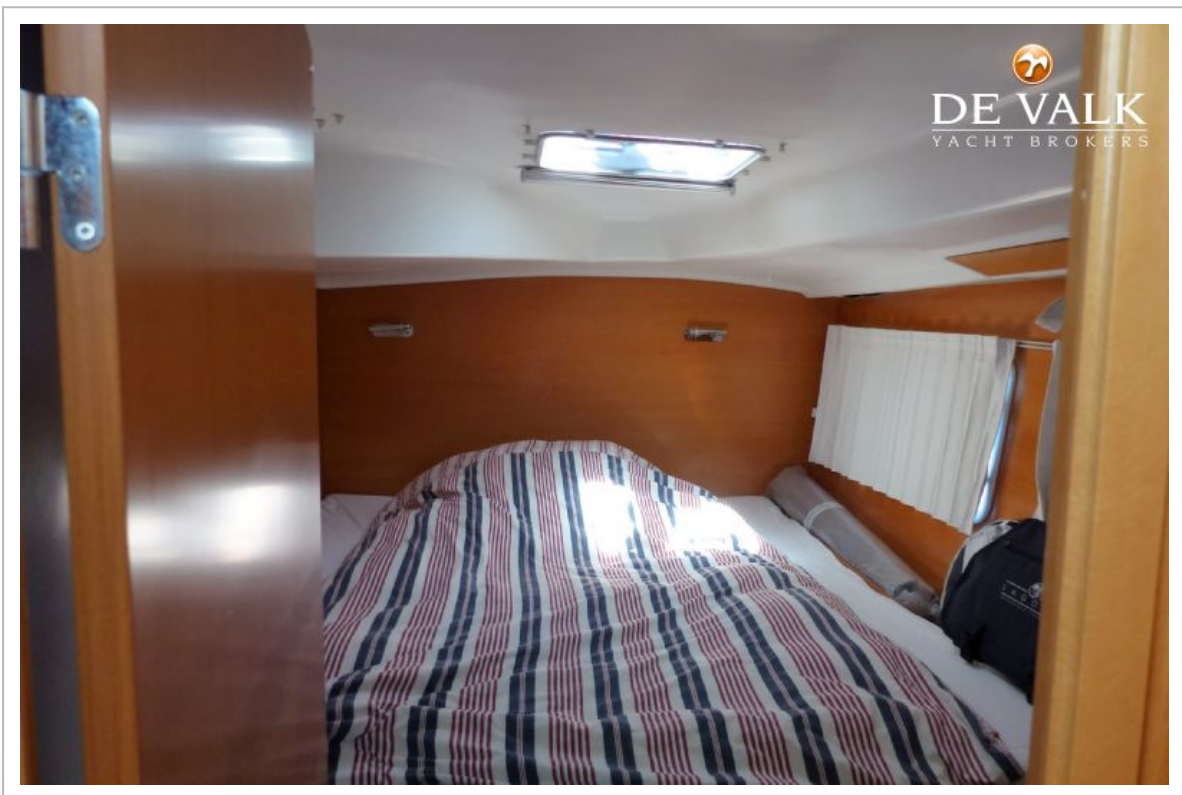
# LAGOON 380 S2



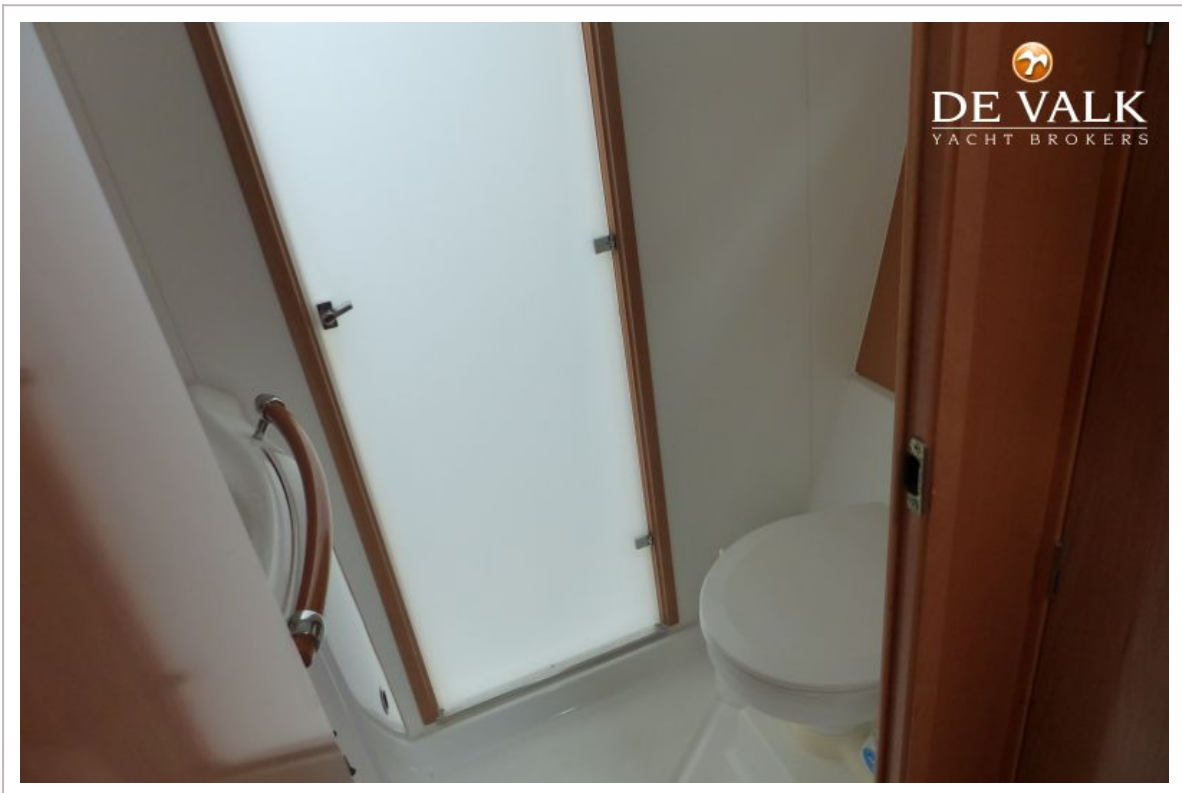
# LAGOON 380 S2



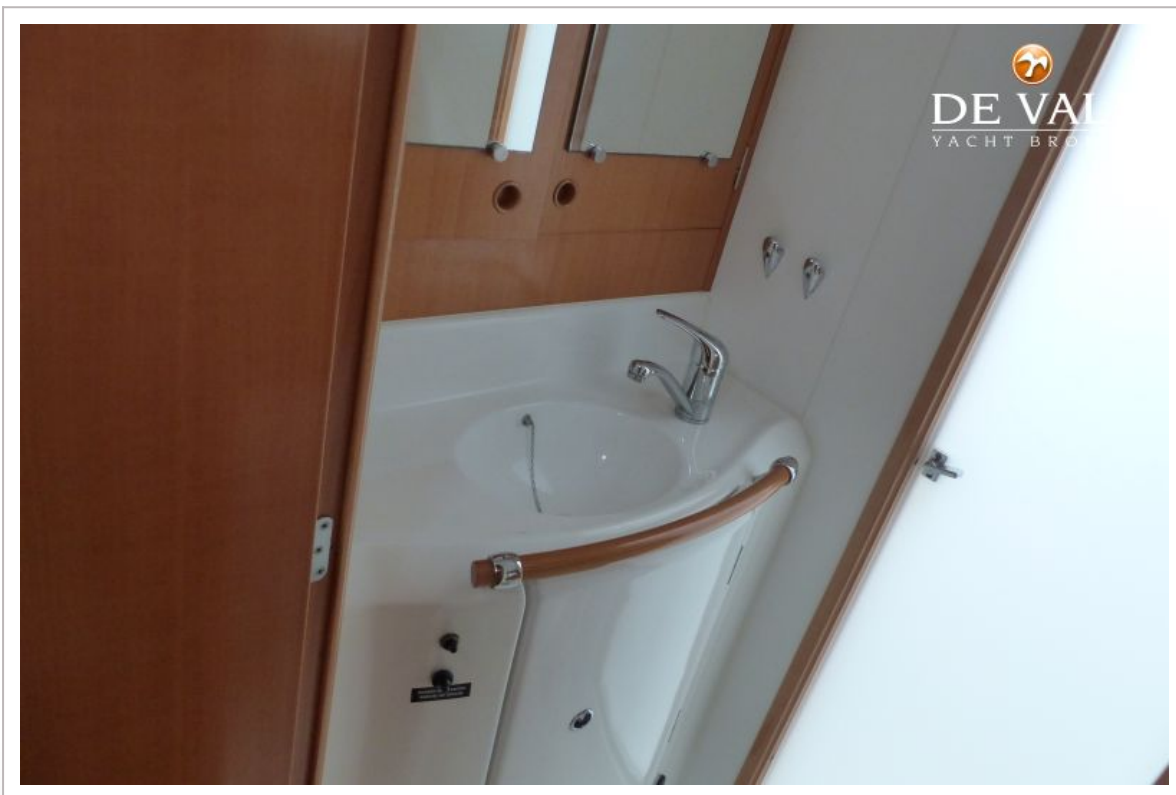
# LAGOON 380 S2



# LAGOON 380 S2









# LAGOON 380 S2

