



DE VALK
YACHT BROKERS



MOODY 49



DE VALK
YACHT BROKERS

BROKER'S COMMENTS

Please do have a closer look at this Moody 49. Best described as clever and safe design, built with high quality materials and equipped for long distance cruising. This is a superb modern alternative for the Scandinavian centre cockpit models. Very practical and easy to operate by a couple, but still offering comfort for six and lots of storage space. Hardly seen a more over the top maintained and loved vessel like this. The present owners are serious "blue water sailors" and do understand the importance of top level maintenance. Mid June the new teak deck will be finished. Well worth a visit!

Willem Koopmans

SPECIFICATIONS

Dimensions	14.64 x 4.40 x 2.35 (m)	Builder	VT Halmatic Ltd.
Built	2005	Cabins	3
Material	GRP	Berths	6
Engine(s)	1 x Yanmar 4JH3-HTE diesel	Hp/Kw	100.00 (hp), 73.60 (kw)
Asking price	sold (VAT)	Lying	contact sales office

CONTACT

Sales office	De Valk Costa Blanca	Telephone	+34965021569
Address	Costa Blanca Region 03730 Javea Alicante Spain	E-mail	costablanca@devalk.nl

DISCLAIMER

These particulars are given in good faith as supplied but cannot be guaranteed.



GENERAL

Model	MOODY 49
Type	sailing yacht
LOA (m)	14,64
LWL (m)	12,40
Beam (m)	4,40
Draft (m)	2,35
Headroom (m)	2,00
Year built	2005
Builder	VT Halmatic Ltd.
Country	United Kingdom
Designer	Bill Dixon
Displacement (t)	16
Ballast (tonnes)	5
CE norm	A
Hull material	GRP
Hull colour	blue AWL grip 2014
Hull shape	round-bilged
Keel type	fin keel
Superstructure material	GRP AWL grip 2019
Deck material	GRP
Deck finish	teak New Birma teak (12 mm), to be finished mid June, 2021
Cockpit deck finish	teak New Birma teak (12 mm), to be finished mid June, 2021
Antifouling (year)	Cupper coat
Dorades	yes
Window frame	aluminium
Window material	tempered glass
Deckhatch	2020 replaced at master bedroom section
Portholes	yes
Fuel tank (litre)	stainless steel 527
Level indicator (fuel tank)	yes



Freshwater tank (litre)	GRP 2 x 400
Level indicator (freshwater)	yes
Greywater tank (litre)	GRP 125, new pump kitchen
Wheel steering	Folding steering wheel Whitlock
Tiller	Rudder bearings & seals replaced in 2019
Emergency tiller	yes
More info on hull	Cleaned and polished with 3 m wax product (July 2020)
More info on paintwork	AWL grip 2014
Extra info	Superstructure & cockpit AWL grip 2019
Extra info	Water tanks fully cleaned
Extra info	Fuel tank, fully cleaned

ACCOMMODATION

Cabins	3
Berths	6
Interior	teak
Layout	Centre cockpit / aft cabin
Floor	teak and holly
Saloon	yes
Headroom saloon (m)	2,1
Air-conditioning	reverse cycle airco 3 units (all cabins), serviced and new capacitors, 2020
Navigation center	yes
Aft Cabin	yes
Dinette	yes
Opening door to cockpit	yes
Galley	yes
Countertop	Duropol
Sink	stainless steel Double one 1/1 and 1/4 sink
Cooker	For the chefs the fantastic Force 10 3 burner version
Oven	Force 10



Gas alarm	2019
Microwave/oven combi	Panasonic
Fridge	yes
Freezer	yes
Hot water system	220V + engine All pipes / tubes replaced
Water pressure system	electrical All tubes replaced
Manual and/or foot pump	yes
Owners cabin	French bed New hatch, blind and mosquito system, 2020
Bed length (m)	2,20
Wardrobe	hanging/drawers/shelves
Bathroom	en suite
Toilet	en suite 2019
Toilet system	electric
Wash basin	in the bathroom
Shower	en suite
Guest cabin 1	double bed
Bed length (m)	2,2
Wardrobe	hanging/drawers/shelves
Bathroom	shared
Toilet	shared
Toilet system	electric
Wash basin	in the bathroom
Shower	shared
Guest cabin 2	yes
Bed length (m)	2
Wardrobe	hanging/drawers/shelves
Bathroom	shared
Toilet	shared
Toilet system	electric
Wash basin	in the bathroom
Shower	shared
Extra info	All cabins LED lightning



MACHINERY

No of engines	1
Make	Yanmar
Type	4JH3-HTE
HP	100
kW	73,60
Fuel	diesel
Year installed	2005
Maximum speed (kn)	9
Cruising speed (kn)	7,5
Consumption (l/hr)	5
Range (nm)	550
Engine hours	3552
Engine cooling system	freshwater heat exchanger Redone
Drive	shaft
Shaft seal	yes
Engine controls	bowden cable
Gearbox	yes
Bowthruster	electric
Propeller type	fixed
Propeller blades	3
Propeller shaft material	Bronze
Manual bilge pump	yes
Electric bilge pump	New 2020
Electrical installation	12/ 220
Generator	Whisper Mastervolt 6 kW, new electr. cards & capacitors July '20
Start battery	yes
Service battery	2016
Bowthruster battery	Optima, new July 2020
Windlass battery	Optima, new July 2020
Battery monitor	Mastervolt 2019



Battery charger	yes
Inverter	300 watt
Solar panel	2x 150 Watt, flexible, on bimini, new July 2020
Shorepower	yes
Extra info	Heavy duty alternator
Extra info	Full service history available
Extra info	Generator serviced July 2020, new PCB and capacitor

NAVIGATION

Compass	yes
Electric compass	On pilot
Depth sounder	Raymarine ST60
Log	Raymarine ST60
Windset	Raymarine ST60
VHF	yes
VHF handheld	yes
Autopilot	Raymarine St 6001
Rudder angle indicator	On pilot
Radar/GPS/plotter	Raymarine 9"
PC connection	Panosonic Water and chock proof PC
Wifi antenna	yes
Electronis chart(s)	On PC
AIS transponder	2019
EPIRB	Ocean Signal 2017
Navigation lights	LED
Loudhailer	yes
Extra info	Dismounting of rudder, new fixation system, July 2020

EQUIPMENT

Fixed windscreen	yes
Sprayhood	yes



Bimini	2016
Sun awning	Sunbrella
Cockpit cushions	yes
Cockpit table	yes
Bathing platform	yes
Boarding ladder	yes
Transom door	Hydraulic supported
Gangway	yes
Deck shower	yes
Anchor	yes
Anchor chain	yes
Anchor 2	yes
Windlass	electrical With new 1600 W Lewmar engine, new seals & bearings, 2020
Dinghy	Ribeye 2.80m, 2017
Outboard	Yamaha 6 Hp
Davits	yes
Davits controls	yes
Deck crane	Stainless steel for outboard
Sea railing	yes
Life raft	yes
Life raft (pers)	8
Last life raft survey	Due since 2017
Horn	yes
Radar reflector	yes
Fenders	yes
Mooring lines	yes
Spare parts	yes
TV	yes
Radio-cd player	yes
Cockpit speakers	yes
Speakers in salon	yes



Clock - barometer	yes
Fire extinguisher	2013 replaced

RIGGING

Rigging	cutter
Standing rigging	Rod
Brand mast	Seldén
Material mast	aluminium White powder coated
Spreaders	3
Keel stepped mast	yes
Mainsail	2016 Doyle laminate
Stoway mast	yes
Cutterstay	yes
Genoa	North
Genoa furler	yes
Staysail	Self tacking 2013
Staysail furler	yes
Self tacking jib installation	yes
Boomvang	yes
Genoa sheetwinches	2 x Lewmar ST 58 electric
Halyard winches	yes
Spinnaker winch	2 x Lewmar ST 40
Reefing winch	yes
Multifunctional winches	2 x Lewmar 48, 1 electric
Extra info	New Dyneema rope, 2020
Extra info	All winches professionally serviced 2020



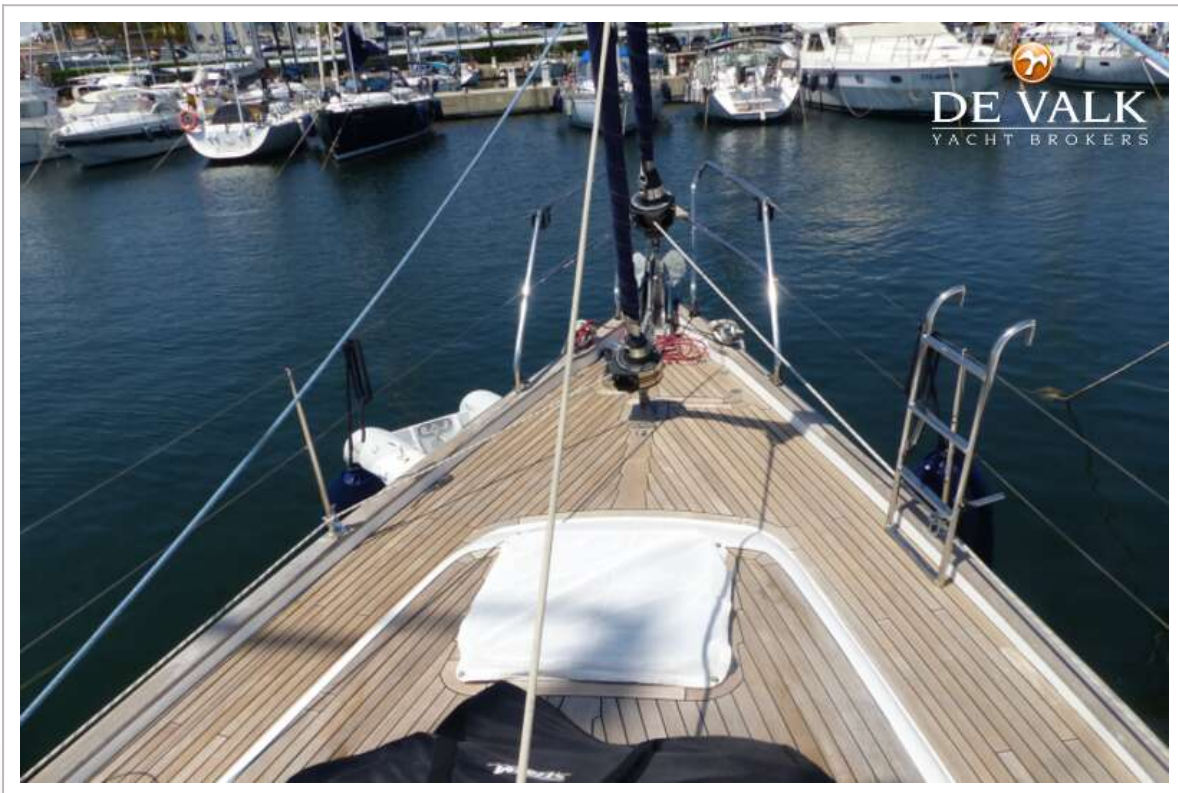
MOODY 49



MOODY 49



MOODY 49

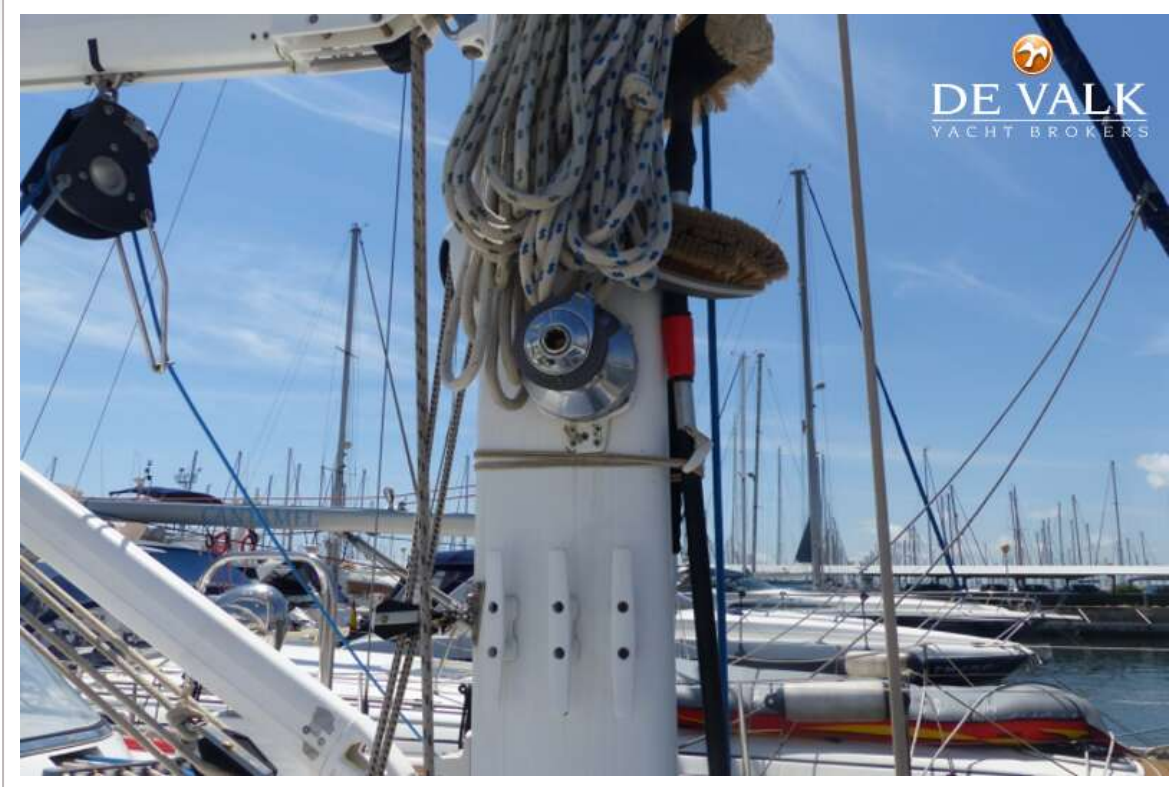


MOODY 49





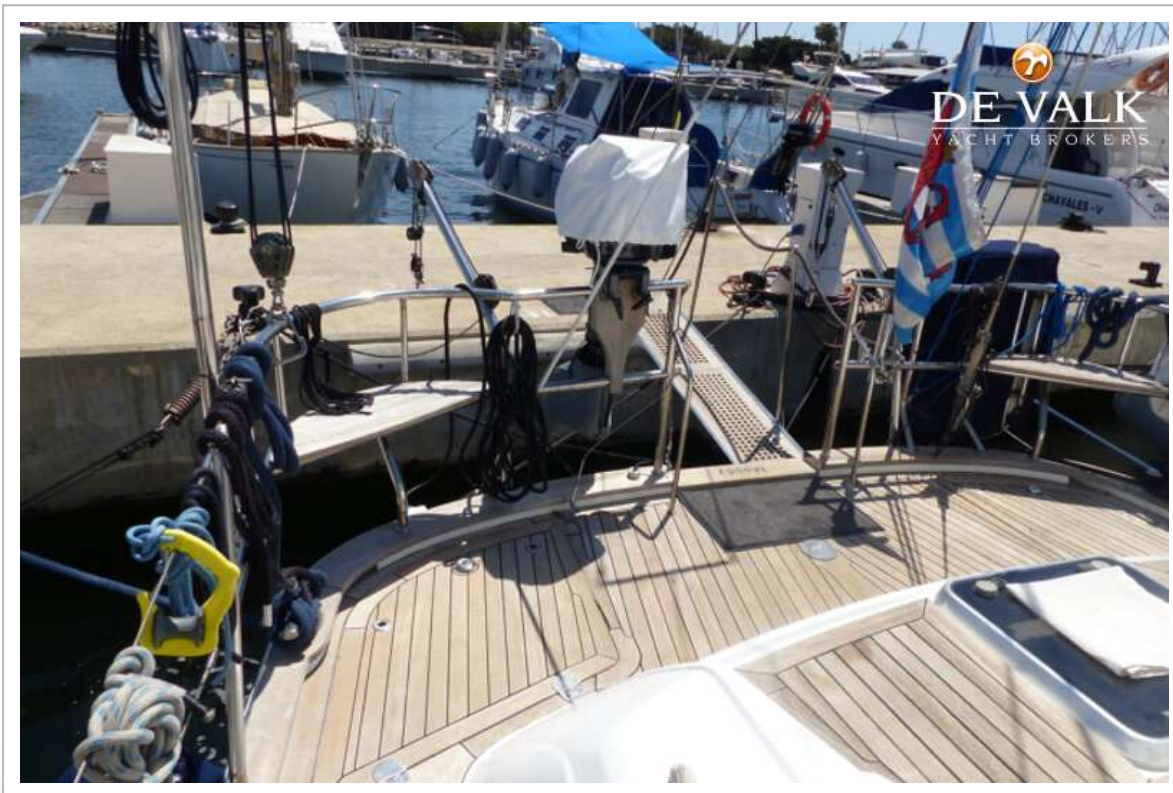
MOODY 49



MOODY 49



MOODY 49



MOODY 49



MOODY 49



MOODY 49



MOODY 49



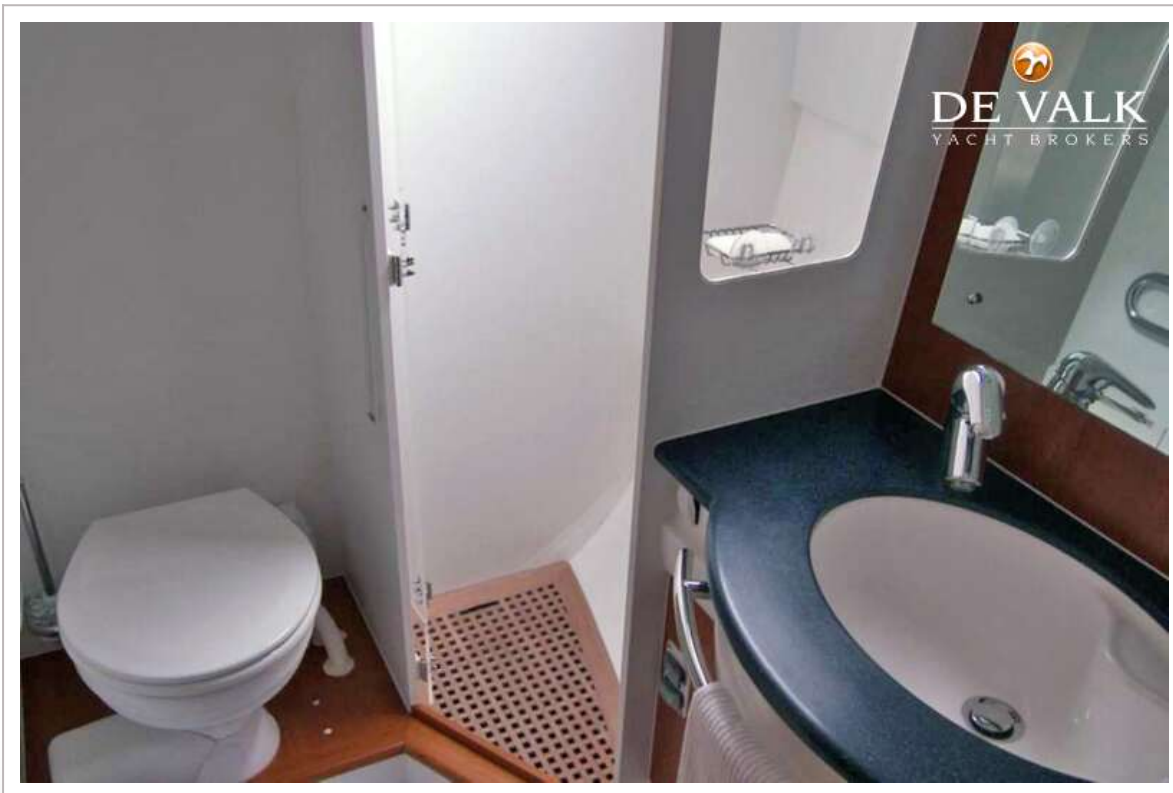
MOODY 49



MOODY 49



MOODY 49



MOODY 49





