



BENETEAU SWIFT TRAWLER 42

BENETEAU SWIFT TRAWLER 42

BROKER'S COMMENTS

An exceptional boat to spend a lot of time on board, as much as to do small cruises at the day. This Beneteau Swift Trawler 42 is very well maintained and ready to go. Rare in this state and at this price. She combines a classic line with modern construction. She has a well thought out interior layout and is realistically priced for a quick sale.

Sofia Iliia-Salvanou

SPECIFICATIONS

Dimensions	12.17 x 4.17 x 1.15 (m)	Builder	Chantier Beneteau 85
Built	2006	Cabins	2
Material	GRP	Berths	7
Engine(s)	2 x YANMAR 370 CV diesel	Hp/Kw	2 x 370.00 (hp), 271.95 (kw)
Asking price	sold (VAT)	Lying	at sales office

CONTACT

Sales office	De Valk Corfu	Telephone	(+30) 266 111 8095
Address	New Port of Corfu, near Gouvia Marina 490 83 Corfu Greece	E-mail	corfu@devalk.nl

DISCLAIMER

These particulars are given in good faith as supplied but cannot be guaranteed.



BENETEAU SWIFT TRAWLER 42

GENERAL

Model	BENETEAU SWIFT TRAWLER 42
Type	motor yacht
LOA (m)	12,17
Beam (m)	4,17
Draft (m)	1,15
Air draft (m)	7,70
Year built	2006
Builder	Chantier Beneteau 85
Country	France
Designer	Joubert Michel-Nivelt Bernard
Displacement (t)	15,59
CE norm	NA
Hull material	GRP
Hull colour	blue
Hull shape	deep-V
Superstructure material	aluminium
Deck material	teak
Deck finish	teak
Superstructure deck finish	teak
Cockpit deck finish	teak
Antifouling (year)	2018
Window frame	stainless steel
Window material	tempered glass
Portholes	aluminium
Flybridge	yes
Flybridge cover	yes
Flybridge suncover	yes
Radar arch	non collapsible
Fuel tank (litre)	aluminium 2 X 750
Level indicator (fuel tank)	Gauge



BENETEAU SWIFT TRAWLER 42

Freshwater tank (litre)	epoxy 2 X 320
Level indicator (freshwater)	Gauge on the electrical board
Blackwater tank (litre)	epoxy 83
Wheel steering	hydraulic
Inside helm position	yes
Flybridge helm position	yes
Extra info	Fiber glass laminate with stiffening

ACCOMMODATION

Cabins	2
Berths	7
Interior	teak
Layout	yes
Floor	teak
Aft deck	yes
Pilot house/deck saloon	yes
Saloon	Convertible Sofa to a Double berth.
Chart table	yes
Dining room	yes
Dinette	yes
Opening door to cockpit	yes
Sliding door to aft deck	yes
Galley	yes
Countertop	wood
Sink	GRP
Cooker	calor gas
Oven	yes
Fridge	yes
Hot water system	220V/engine/heating
Water pressure system	electrical
Manual and/or foot pump	yes



BENETEAU SWIFT TRAWLER 42

Crockery	yes
Owners cabin	double bed
Wardrobe	hanging/drawers/shelves
Bathroom	en suite
Toilet	en suite
Toilet system	electric
Wash basin	in the bathroom
Shower	en suite
Guest cabin 1	double bed + single bed
Wardrobe	hanging/drawers/shelves
Bathroom	separate
Toilet	separate
Toilet system	manual
Wash basin	at the toilet
Shower	separate
Flybridge	yes

MACHINERY

No of engines	2
Make	YANMAR
Type	370 CV
HP	370
kW	271,95
Fuel	diesel
Year installed	2006
Year of overhaul	2018
Maximum speed (kn)	24
Cruising speed (kn)	12
Consumption (l/hr)	70 Max 45 Min
Engine hours	1700
Engine cooling system	seawater



BENETEAU SWIFT TRAWLER 42

Drive	shaft
Shaft seal	yes
Engine controls	electrical
Gearbox	hydraulic
Bowthruster	electric Volvo
Propeller type	fixed
Propeller blades	4
Propeller shaft material	stainless steel
Shaft lubrication	oilbath
Electric bilge pump	yes
Bilge alarm	yes
Generator	silent separator ONAN e-QD
Running hours generator	430
Batteries	yes
Start battery	2 Pcs
Service battery	3 Pcs
Generator battery	1 Pc
Battery monitor	yes
Battery charger	yes
Shorepower	with cable
Trimtabs	Electric

NAVIGATION

Compass	yes
Compass on flybridge	yes
Depth sounder	yes
Repeater	yes
VHF	yes
Autopilot	yes
Radar	yes
GPS	yes



Plotter/GPS	yes
AIS receiver	yes
AIS transponder	yes
Personal MOB transmitter	yes
Navigation lights	yes
Searchlight	yes

EQUIPMENT

Bimini	yes
Sun awning	yes
Window cover	yes
Cockpit table	yes
Cockpit chairs	yes
Bathing platform	yes
Transom door	yes
Gangway	Berenzoni
Deck shower	yes
Anchor	Delta 25 kg (2007)
Anchor chain	100 m X 10 mm
Dinghy	inflatable 3,2 m
Outboard	6 Hp
Deck crane	manual
Sea railing	stainless steel
Grab rail (superstructure)	teak
Railing side opening gates	yes
Life raft	container
Life raft (pers)	6
Last life raft survey	2017
Lifejackets	yes
Safety harness	yes
Lifebuoy	yes



BENETEAU SWIFT TRAWLER 42

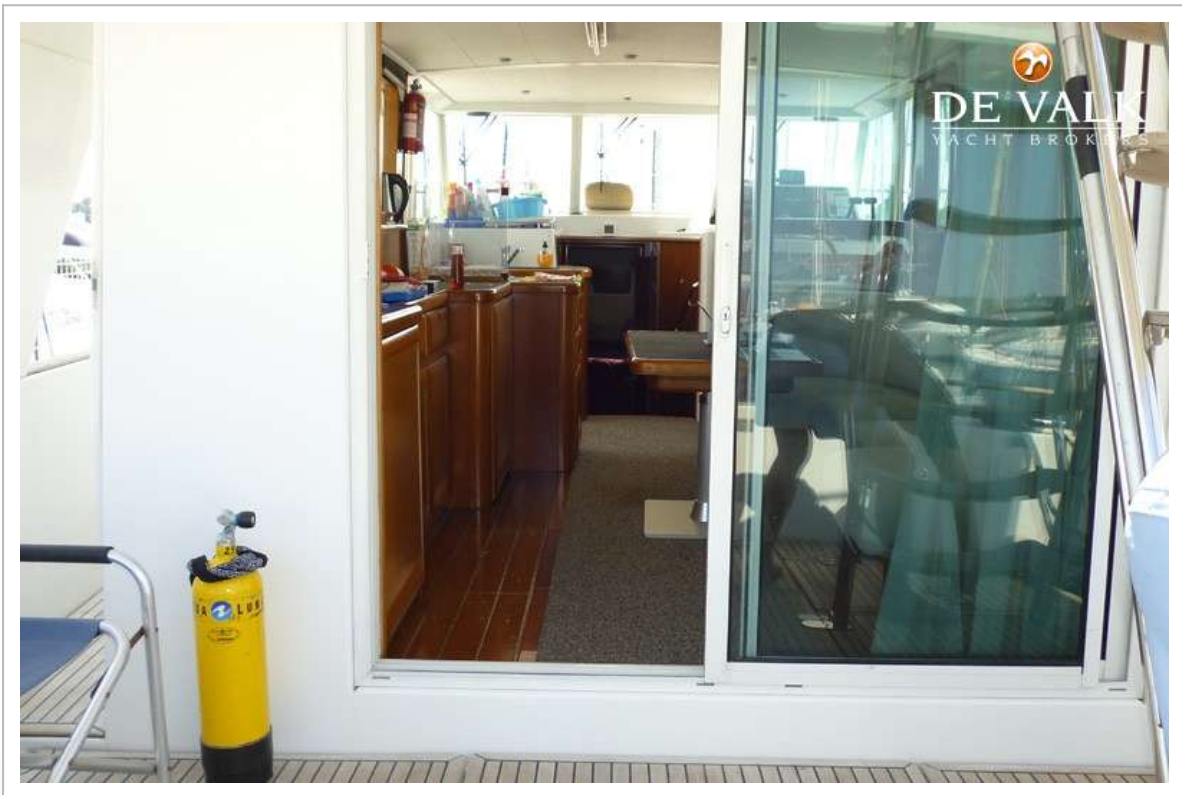
Safety lines on deck	yes
Rope cutter	yes
Wiper	yes
Clearview window	yes
Window ventilator	yes
Horn	electric
Radar reflector	yes
Fenders	yes
Mooring lines	yes
Spare parts	yes
Tools	yes
TV	yes
Radio-cd player	To be replaced
Surround Sound System	yes
Cockpit speakers	yes
Clock - barometer	yes
Fire extinguisher	yes
Latest extinguisher survey	2017
Extinguisher in engine room	Last survey 2017
Auto extinguisher system	yes
Extra info	Spot light on bridge



BENETEAU SWIFT TRAWLER 42



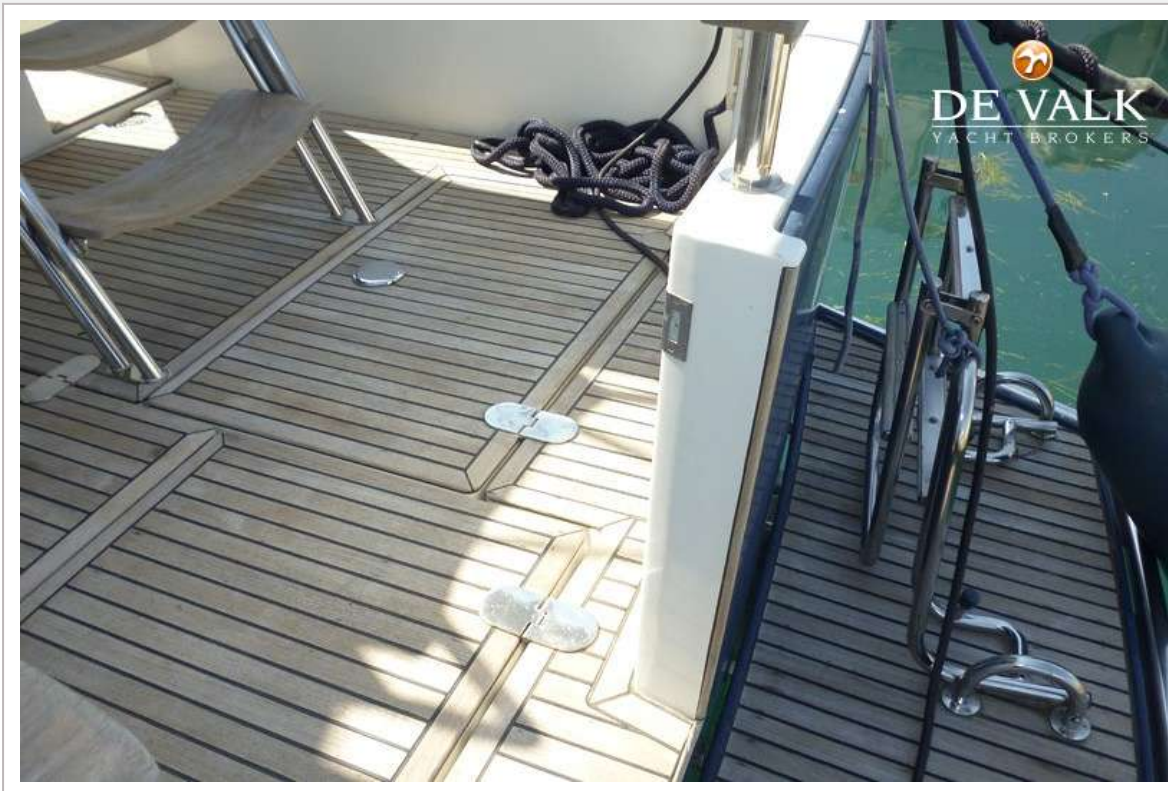
BENETEAU SWIFT TRAWLER 42



BENETEAU SWIFT TRAWLER 42



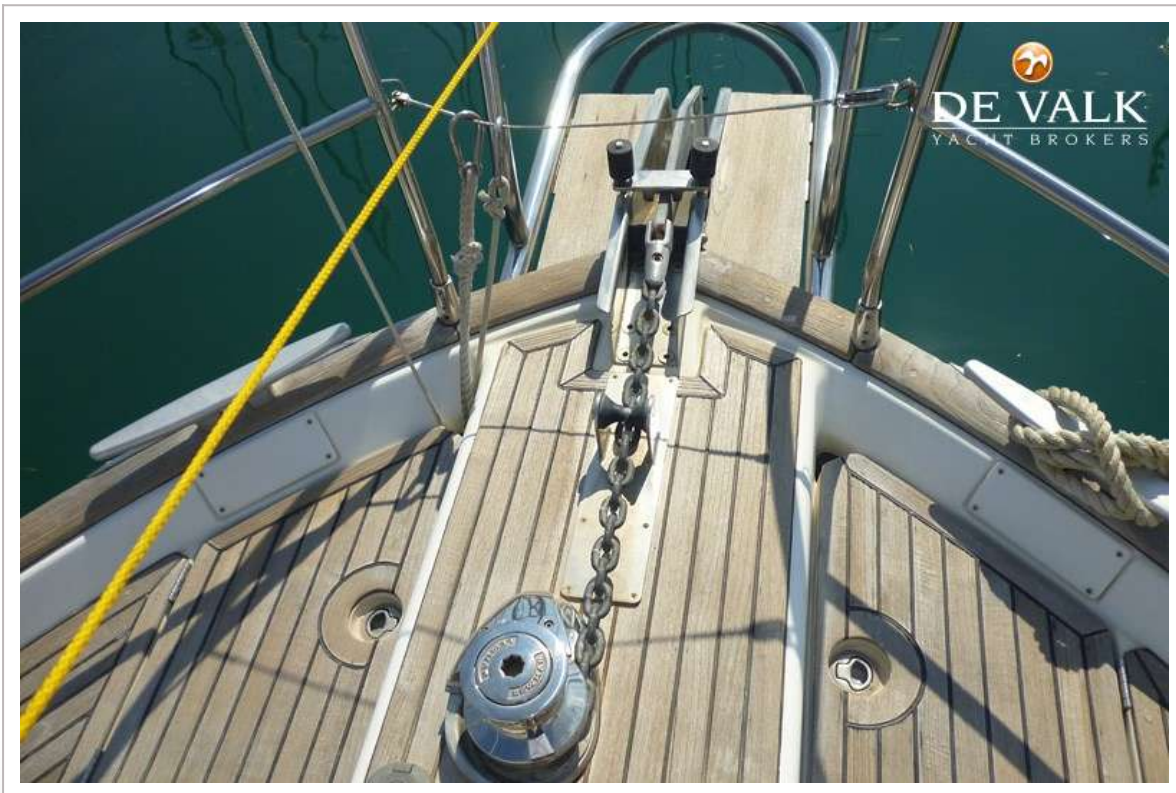
BENETEAU SWIFT TRAWLER 42



BENETEAU SWIFT TRAWLER 42



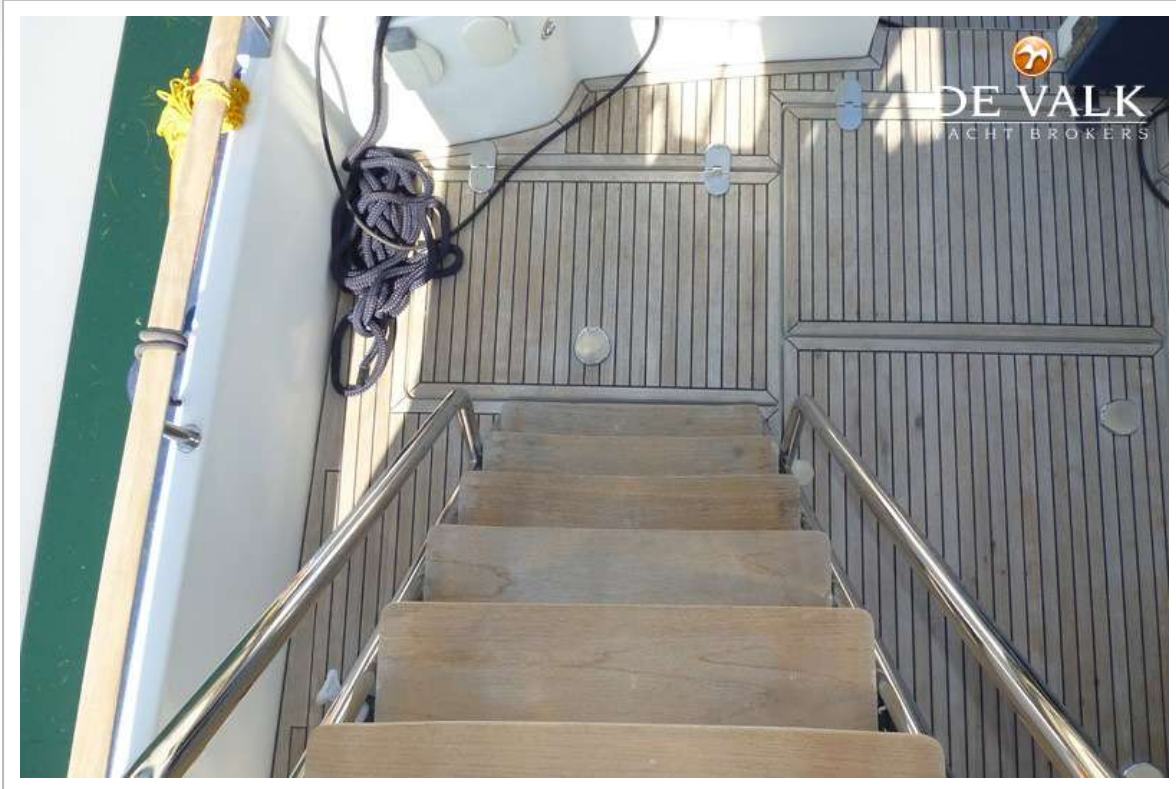
BENETEAU SWIFT TRAWLER 42



BENETEAU SWIFT TRAWLER 42



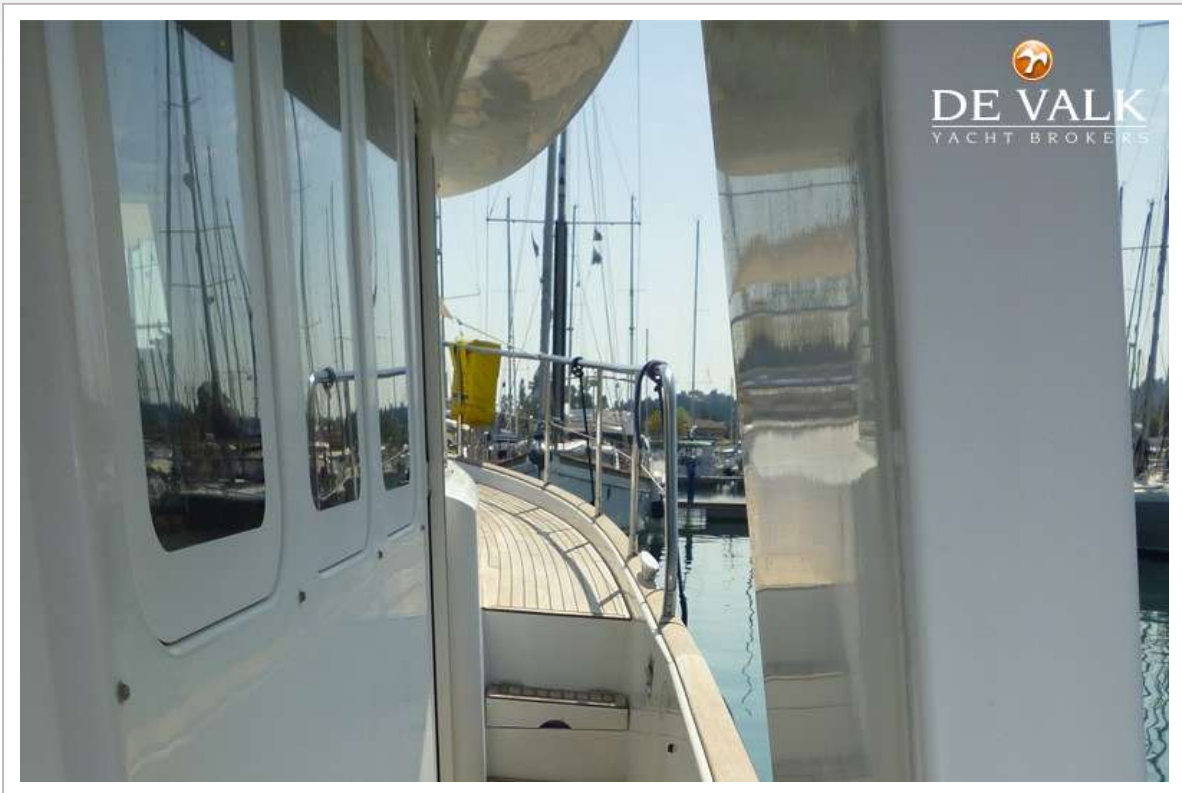
BENETEAU SWIFT TRAWLER 42



BENETEAU SWIFT TRAWLER 42



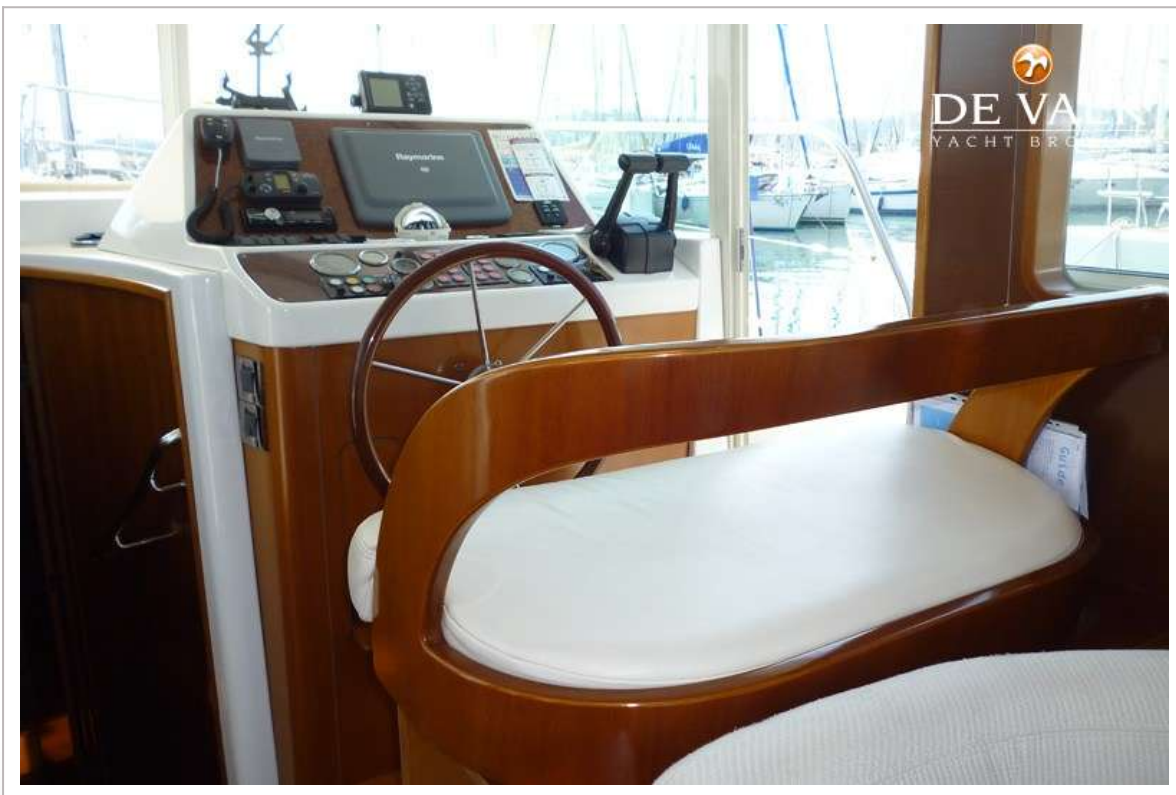
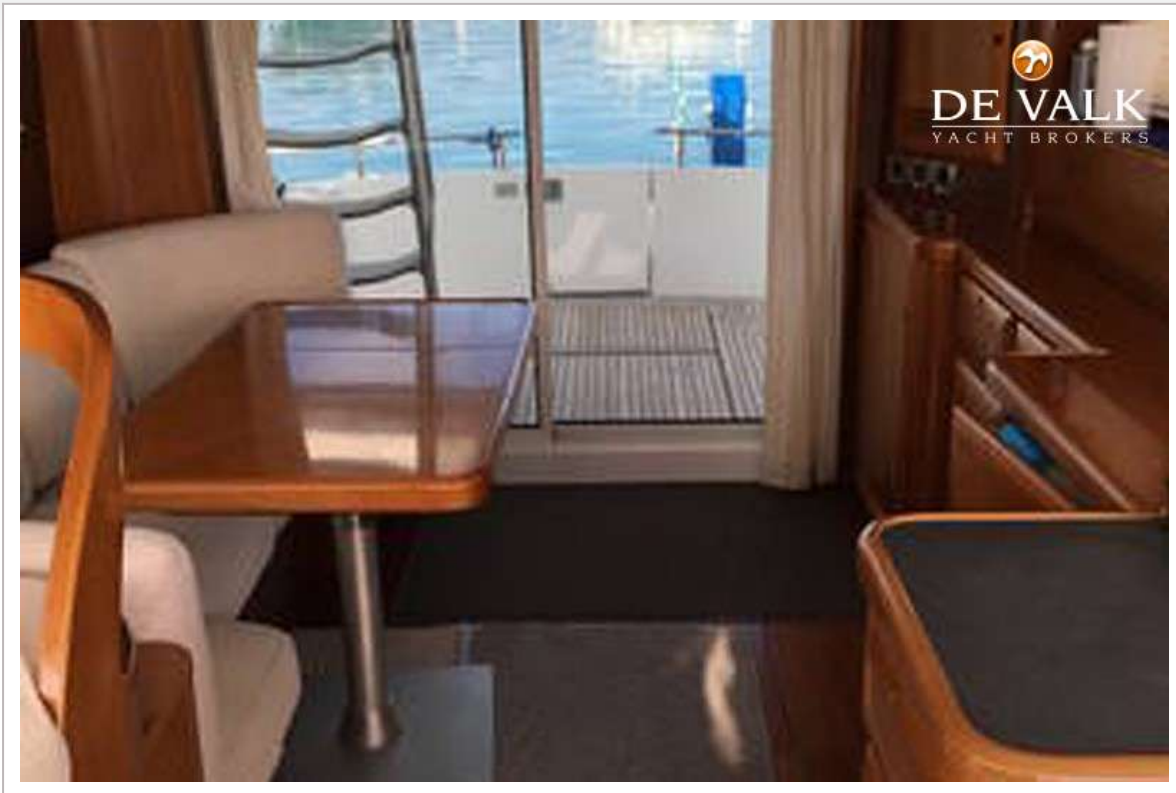
BENETEAU SWIFT TRAWLER 42



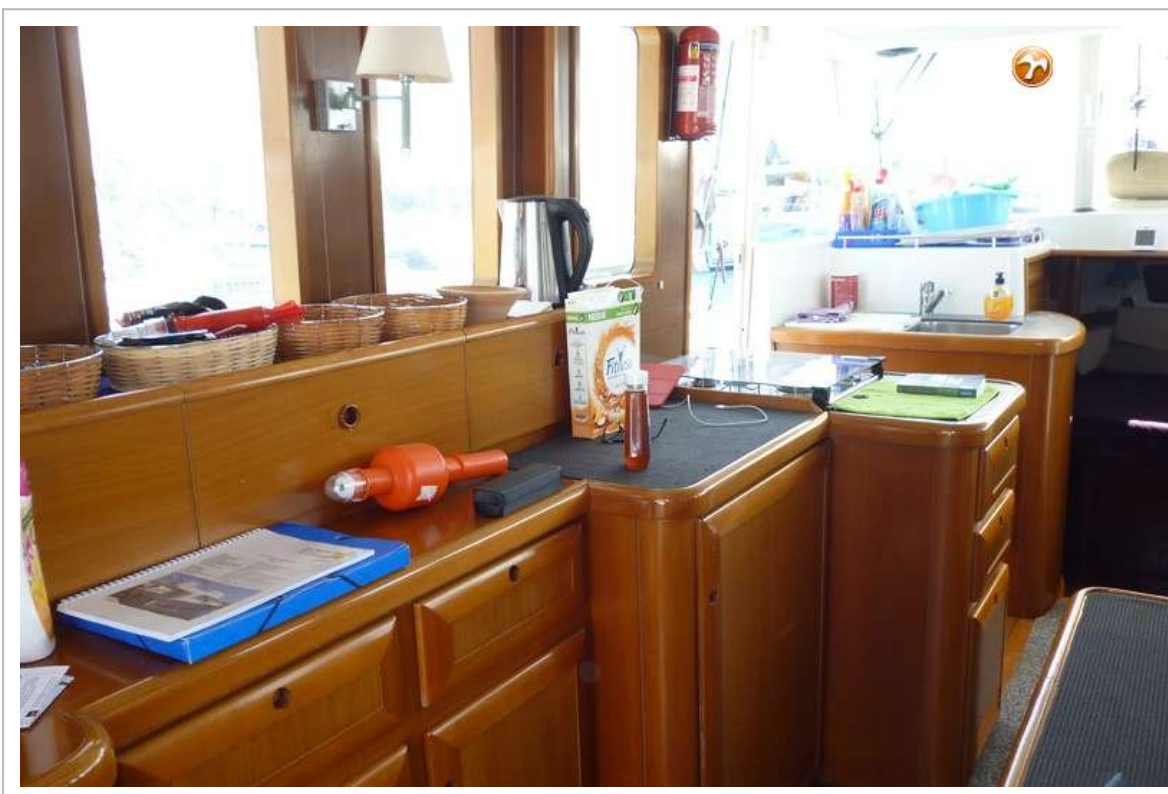
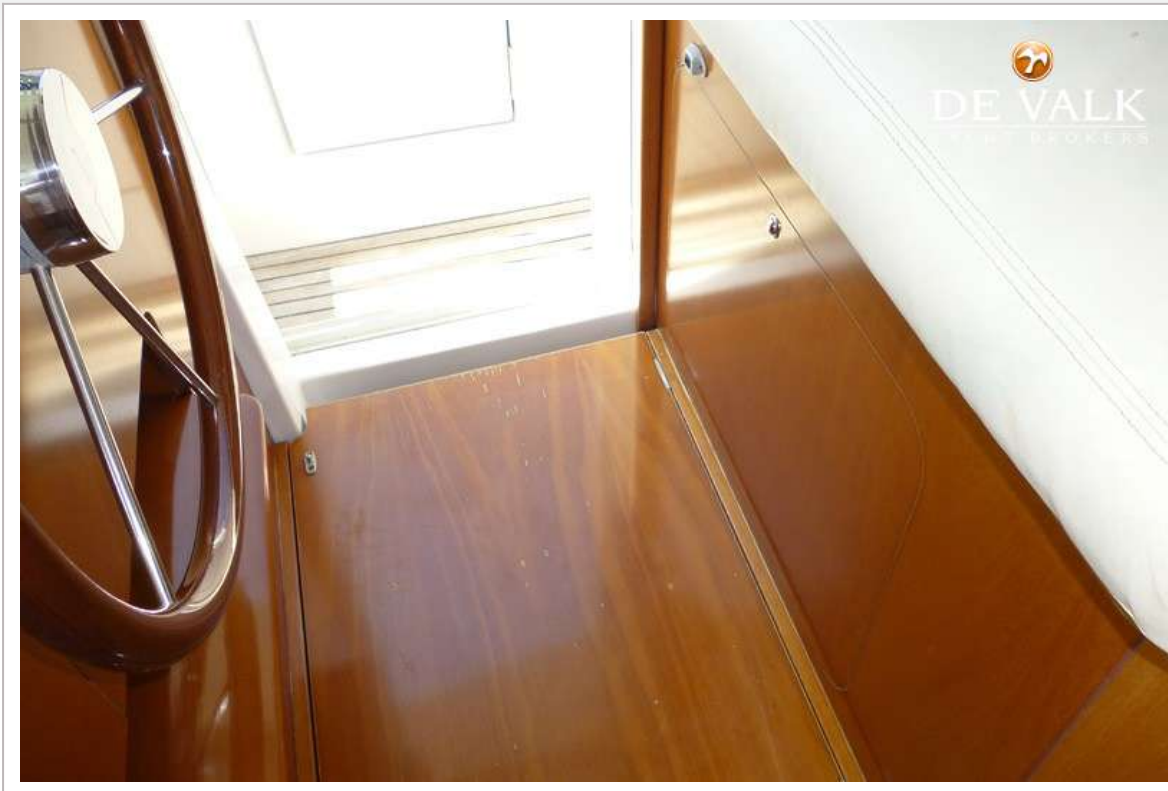
BENETEAU SWIFT TRAWLER 42



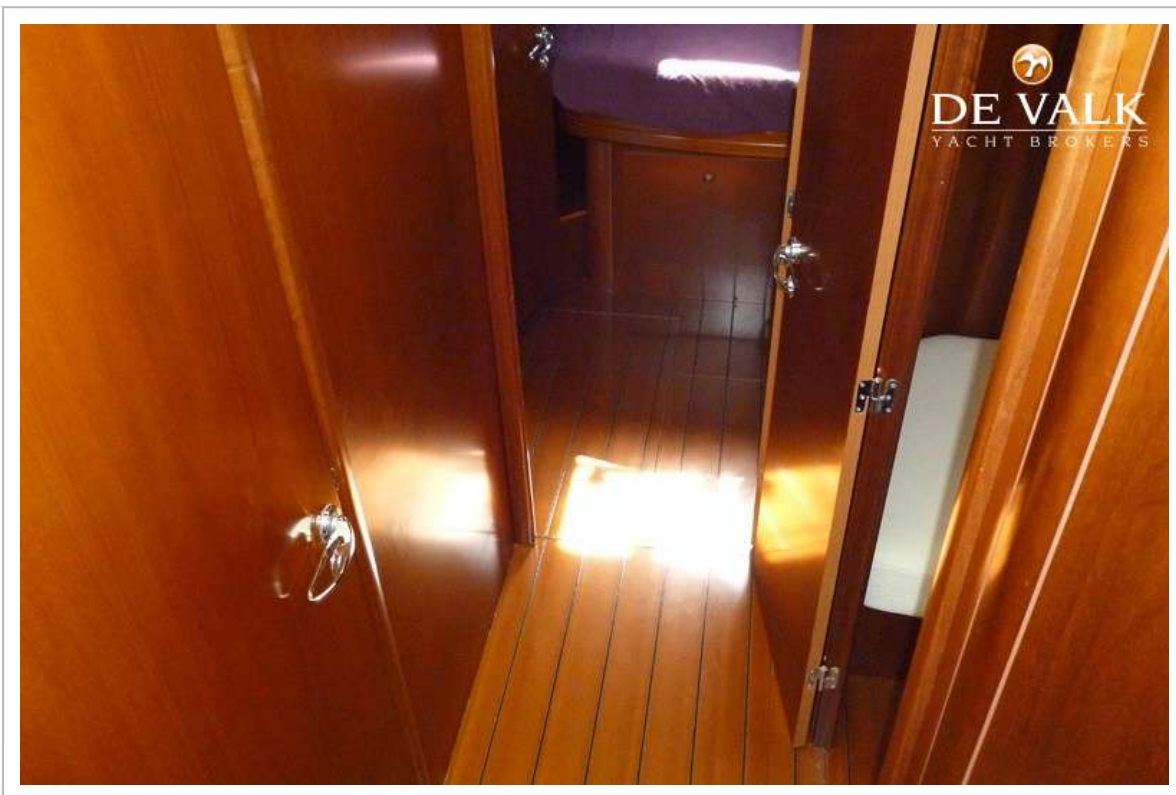
BENETEAU SWIFT TRAWLER 42



BENETEAU SWIFT TRAWLER 42



BENETEAU SWIFT TRAWLER 42



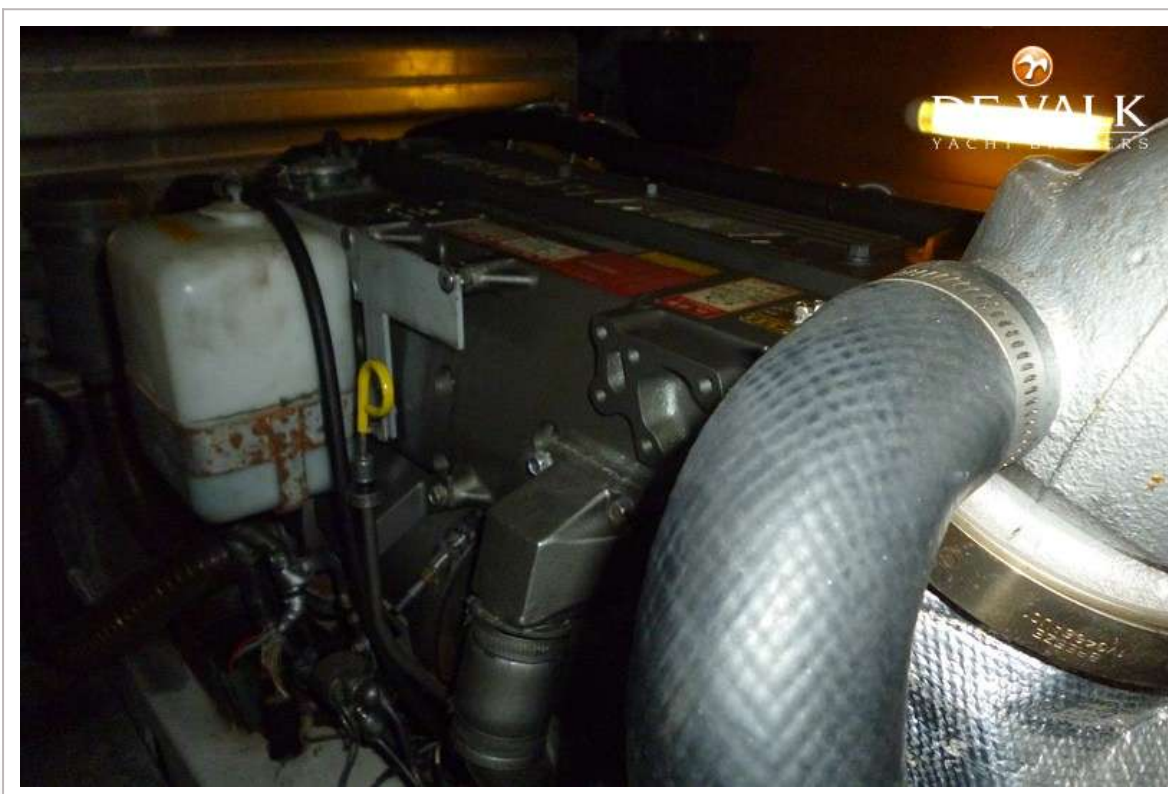
BENETEAU SWIFT TRAWLER 42



BENETEAU SWIFT TRAWLER 42

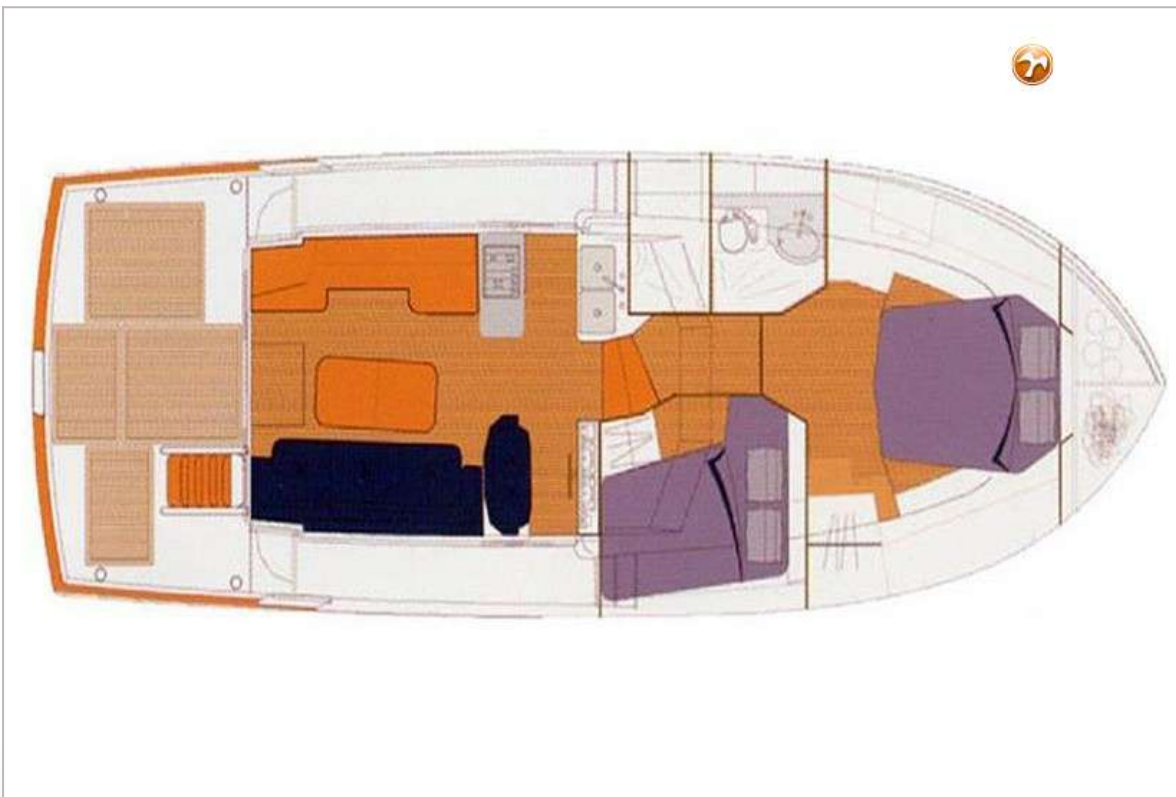


BENETEAU SWIFT TRAWLER 42





BENETEAU SWIFT TRAWLER 42



BENETEAU SWIFT TRAWLER 42

