



DE VALK
YACHT BROKERS



PRINCESS 45 FLYBRIDGE



DE VALK
YACHT BROKERS

PRINCESS 45 FLYBRIDGE

BROKER'S COMMENTS

Attractive motor yacht, well maintained and well equipped. With a length of 13.57 m, this Princess 45 Fly is the popular in the range of fast family yachts. The Princess 45 Fly is equipped with recent navigation equipment, bow thruster, stern thruster, strong generator, heating etc... Thanks to her two strong Volvo Penta engines, this Princess 45 FLY achieves very good performances, even in heavier weather. This Princess 45 FLY can be visited by appointment in the Belgian province of East Flanders.

Jochem Heijermans

SPECIFICATIONS

Dimensions	13.57 x 4.30 x 1.14 (m)	Builder	Marine Projects - UK
Built	1990	Cabins	2
Material	GRP	Berths	6
Engine(s)	2 x Volvo Penta TAM71B diesel	Hp/Kw	2 x 380.00 (hp), 279.50 (kw)
Asking price	sold (VAT)	Lying	elsewhere / not at sales office

CONTACT

Sales office	De Valk Belgium	Telephone	+3258680218
Address	1401 PT Nieuwpoort Belgium	E-mail	belgium@devalk.nl

DISCLAIMER

These particulars are given in good faith as supplied but cannot be guaranteed.



PRINCESS 45 FLYBRIDGE

GENERAL

Model	PRINCESS 45 FLYBRIDGE
Type	motor yacht
LOA (m)	13,57
Beam (m)	4,30
Draft (m)	1,14
Air draft (m)	4,70
Headroom (m)	2,00
Year built	1990
Builder	Marine Projects - UK
Country	Great Britain
Designer	B. Olesinski
Displacement (t)	11
CE norm	NA
Hull material	GRP
Hull colour	off-white
Hull shape	deep-V
Superstructure material	GRP
Deck material	GRP
Superstructure deck finish	teak
Cockpit deck finish	teak
Window frame	aluminium
Window material	glass
Deckhatch	yes
Portholes	aluminium
Flybridge	yes
Flybridge cover	(2015)
Flybridge suncover	(2015)
Radar arch	non collapsible
Fuel tank (litre)	stainless steel 700
Fuel tank 2 (litre)	stainless steel 700



PRINCESS 45 FLYBRIDGE

Level indicator (fuel tank)	yes
Freshwater tank (litre)	stainless steel 2x 450
Blackwater tank (litre)	polyethylene 300
Level indicator (blackwater)	yes
Blackwater tank extraction	pump
Wheel steering	hydraulic
Inside helm position	yes
Flybridge helm position	hydraulic

ACCOMMODATION

Cabins	2
Berths	6
Floor	carpet (2015)
Open cockpit	yes
Saloon	yes
Headroom saloon (m)	2.00
Heating	diesel ducted hot air Eberspacher D7L
Dinette	yes
Dinette to convert into berth	yes
Sliding door to cockpit	yes
Galley	yes
Countertop	tiles
Sink	stainless steel 2x
Cooker	induction (2017)
Microwave/oven combi	(2010)
Fridge	yes
Hot water system	220V + engine
Water pressure system	electrical
Kettle	yes
Coffee maker	yes
Owners cabin	double bed



PRINCESS 45 FLYBRIDGE

Bed length (m)	2,00 x 2,00
Wardrobe	hanging/drawers/shelves
Bathroom	en suite
Toilet	en suite
Toilet system	electric
Wash basin	in the bathroom
Shower	en suite
Guest cabin 1	twin single
Bed length (m)	2x 1.90 x 0.65 / 1.90 x 1.90
Wardrobe	hanging and shelves
Bathroom	shared
Toilet	shared
Toilet system	electric
Wash basin	in the bathroom
Shower	shared

MACHINERY

No of engines	2
Make	Volvo Penta
Type	TAMD71B
HP	380
kW	279,50
Fuel	diesel
Year installed	1990
Maximum speed (kn)	25
Cruising speed (kn)	18
Engine hours	1700
Engine cooling system	freshwater heat exchanger
Drive	shaft
Engine controls	bowden cable
Gearbox	hydraulic



PRINCESS 45 FLYBRIDGE

Bowthruster	electric Vetus 6PK
Sternthruster	electric Vetus 6PK
Exhaust	watercooled
Propeller type	fixed
Propeller blades	4
Propeller shaft material	stainless steel
Shaft lubrication	water
Electric bilge pump	yes
Bilge alarm	yes
Electrical installation	12V/24V/220V
Generator	G&M 9.7KVA
Batteries	yes
Start battery	2x 12V/120Ah (2018)
Service battery	8x GEL accu's (2012)
Generator battery	(2017)
Bowthruster battery	(2012)
Battery monitor	Mastervolt
Battery charger	12V/40Ah Newmar
Battery charger/inverter	Mastervolt 12V/2500W/100Ah
Shorepower	with cable
Trimtabs	yes

NAVIGATION

Compass on flybridge	yes
Electric compass	Raymarine GS165 (2018)
Depth sounder	Raymarine GS165 (2018)
Log	Raymarine GS165 (2018)
Repeater	Autopilot on flybridge
Fish finder	Raymarine GS165 (2018)
VHF	Raymarine (2018)
VHF handheld	Cobra (2013)



PRINCESS 45 FLYBRIDGE

Autopilot	Simrad AP27 (2018)
Rudder angle indicator	VDO
Plotter/GPS	Raymarine GS165 (2018)
AIS receiver	Raymarine (2018)
Camera	Raymarine (2018)
Navigation lights	yes
Loudhailer	yes

EQUIPMENT

Fixed windscreen	yes
Cockpit cover	(2010)
Bimini	(2010)
Cockpit cushions	(2017) + flybridge (2017)
Cockpit table	yes
Bathing platform	yes
Boarding ladder	stainless steel
Deck shower	(W+C)
Anchor	
Anchor chain	30m
Windlass	electrical
Capstan	yes
Deck wash	yes
Dinghy	rigid inflatable
Outboard	Suzuki 3PK
Davits	stainless steel
Davits controls	manual
Sea railing	stainless steel
Pushpit	yes
Pulpit	yes
Lifejackets	yes
Wiper	3x



PRINCESS 45 FLYBRIDGE

Window heating	yes
Horn	electric
Fenders	yes
Mooring lines	yes
TV	yes
TracVision ball	Travelvision (2020)
Radio-cd player	yes
DVD player	yes
Cockpit speakers	yes
Speakers in salon	yes
Speakers in cabin	yes
Clock - barometer	yes
Fire extinguisher	yes
Latest extinguisher survey	(2018)
Extinguisher in engine room	yes
Auto extinguisher system	yes



PRINCESS 45 FLYBRIDGE



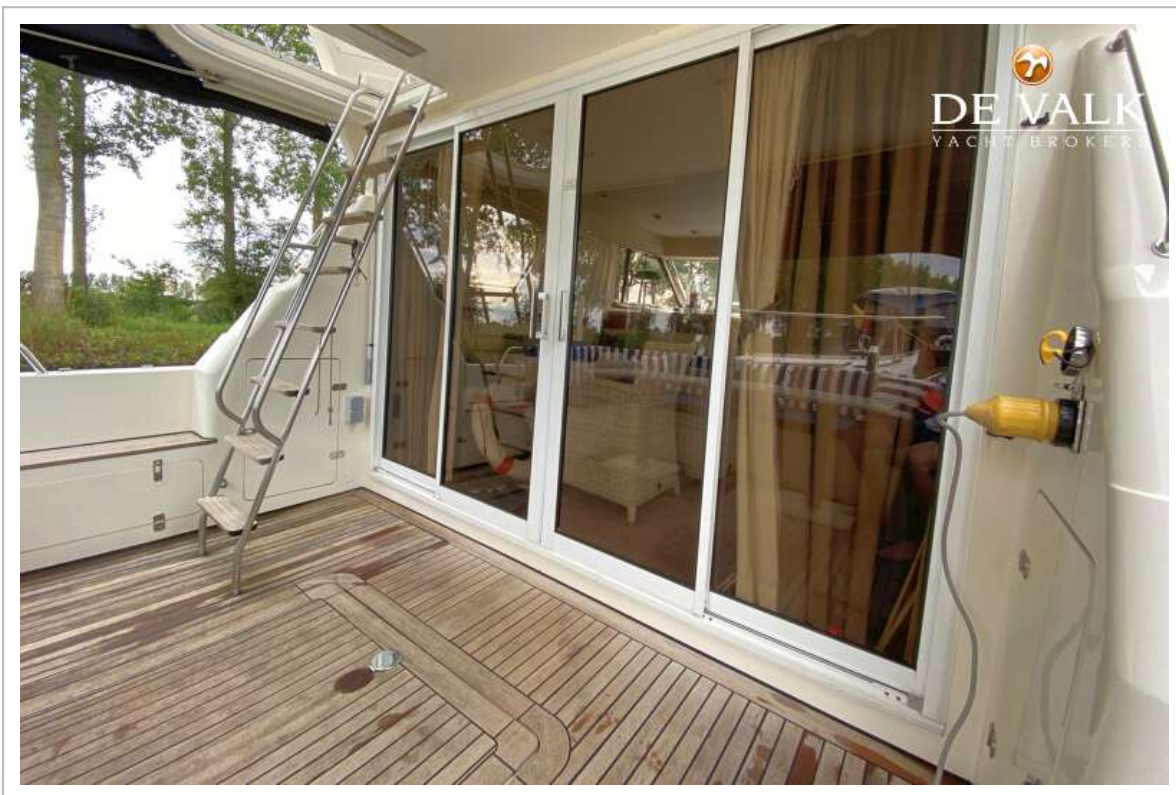
PRINCESS 45 FLYBRIDGE



PRINCESS 45 FLYBRIDGE



PRINCESS 45 FLYBRIDGE



PRINCESS 45 FLYBRIDGE



PRINCESS 45 FLYBRIDGE



PRINCESS 45 FLYBRIDGE



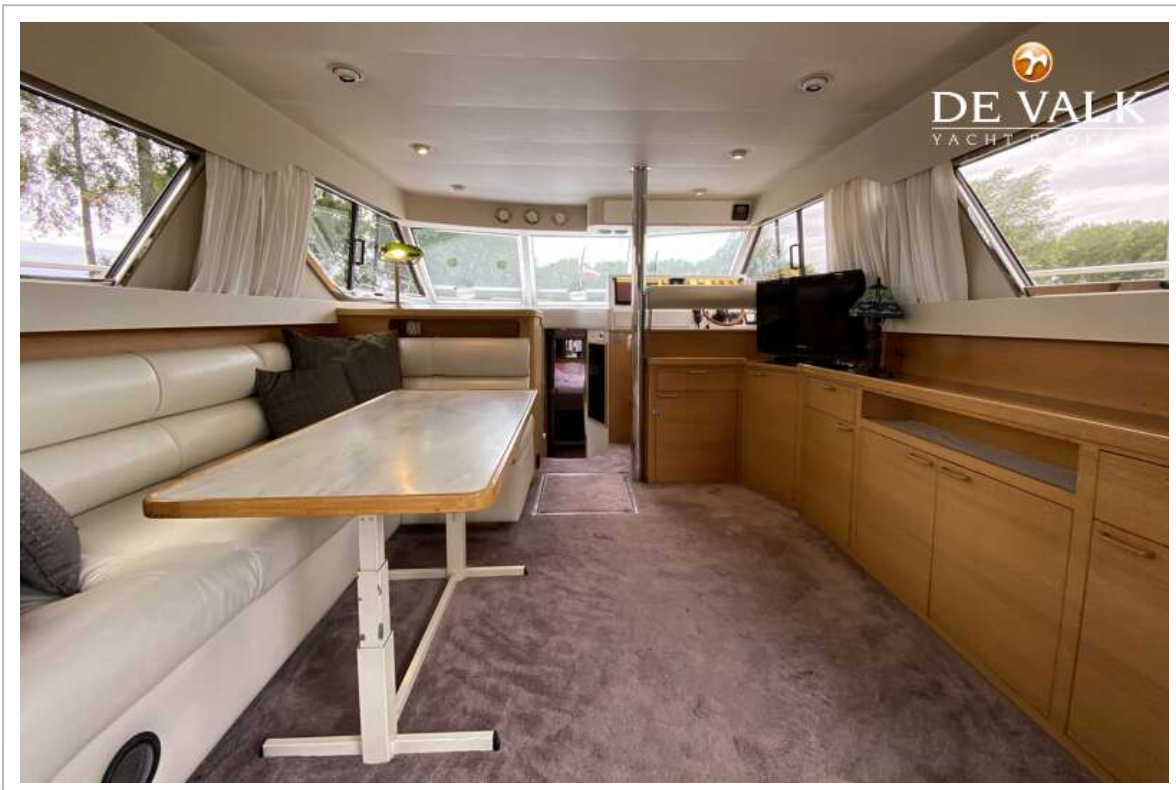
PRINCESS 45 FLYBRIDGE



PRINCESS 45 FLYBRIDGE



PRINCESS 45 FLYBRIDGE



PRINCESS 45 FLYBRIDGE



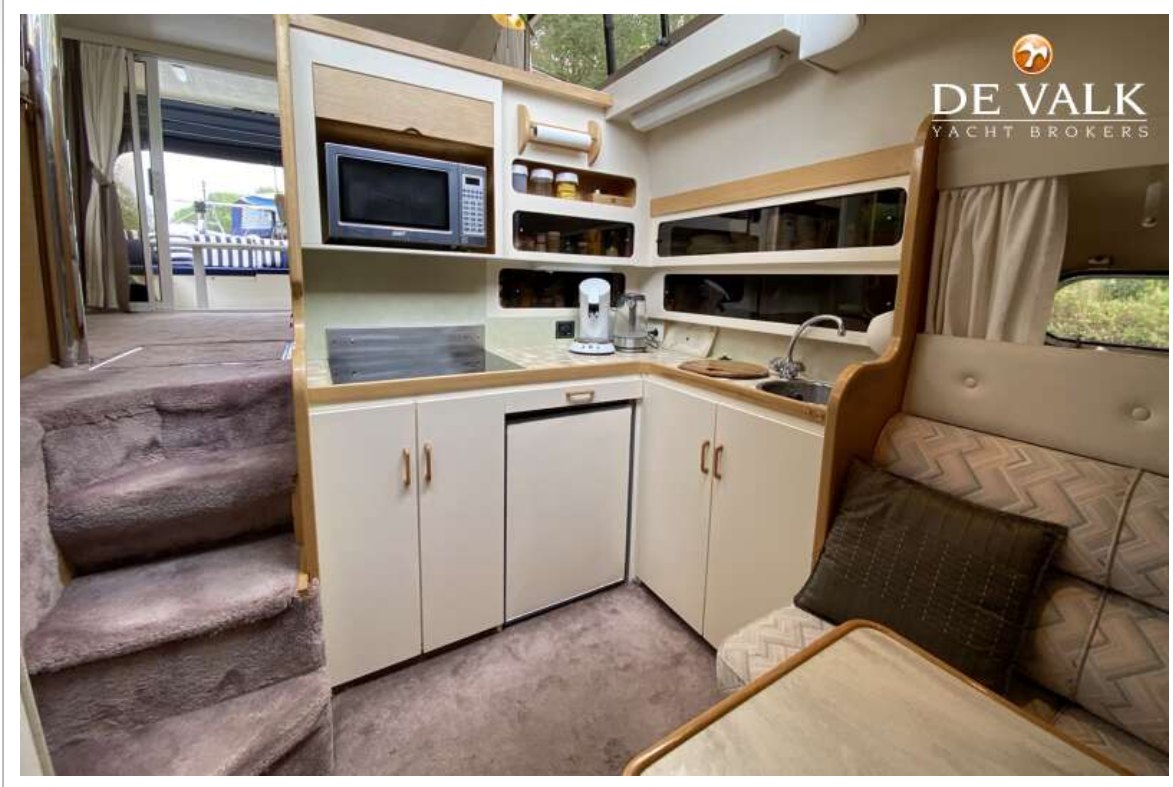
PRINCESS 45 FLYBRIDGE



PRINCESS 45 FLYBRIDGE



PRINCESS 45 FLYBRIDGE



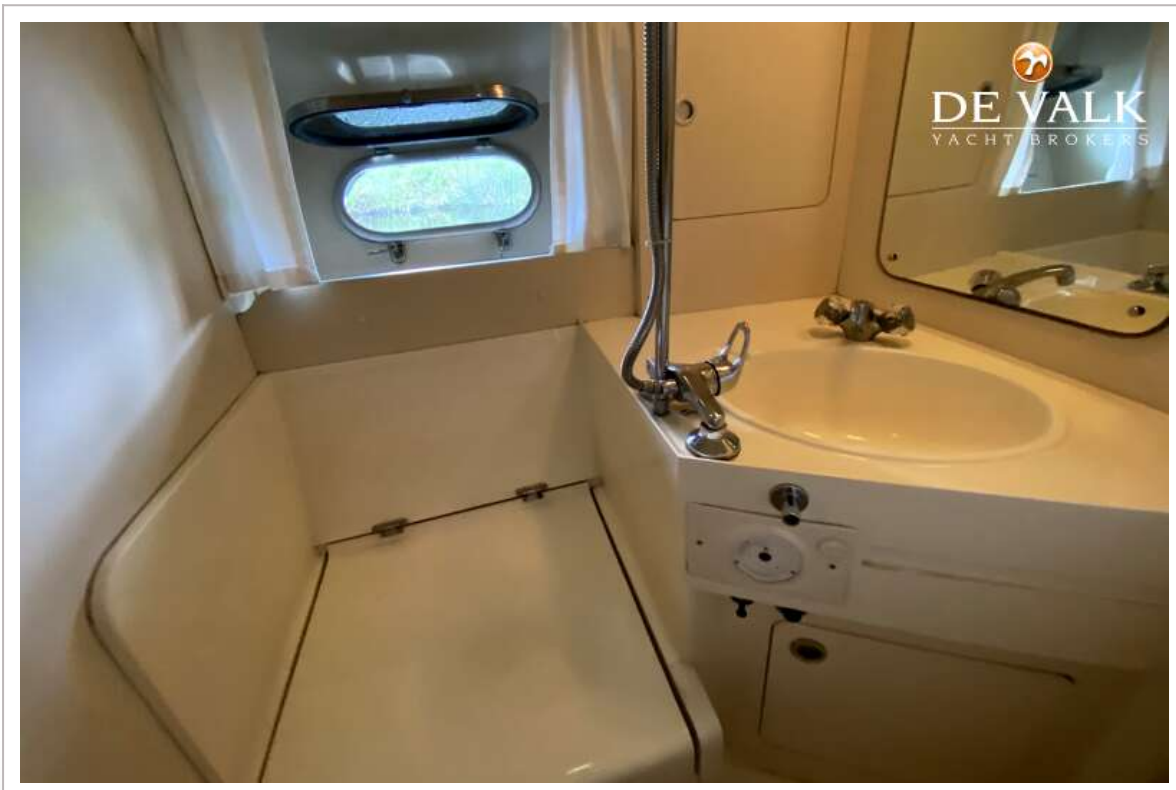
PRINCESS 45 FLYBRIDGE



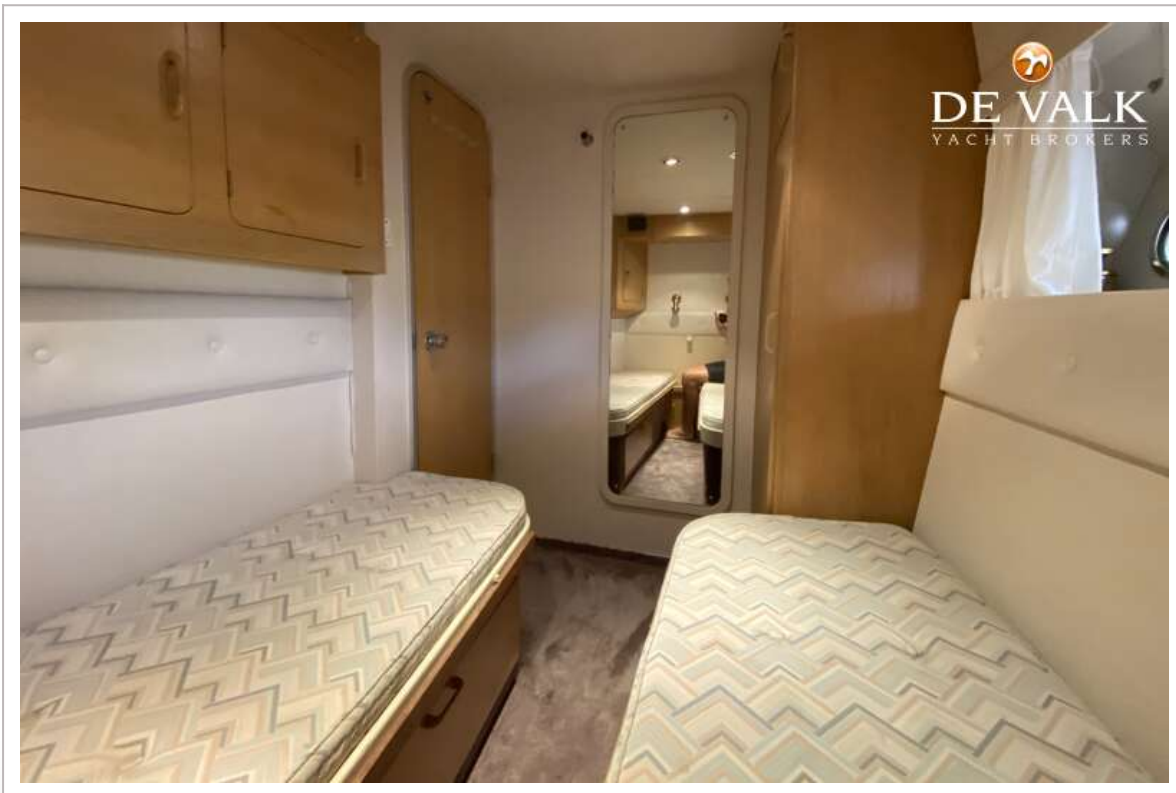
PRINCESS 45 FLYBRIDGE



PRINCESS 45 FLYBRIDGE



PRINCESS 45 FLYBRIDGE



PRINCESS 45 FLYBRIDGE



PRINCESS 45 FLYBRIDGE



PRINCESS 45 FLYBRIDGE

