



NAUTITECH 542

BROKER'S COMMENTS

On the Nautitech 542 Catamaran the sail plan and design of the hull are in perfect harmony, whatever course you are on, the wide cut of the code zero gives perfect adaptability in combination with the foresail, the widely extended mainsail keeps the ship moving even with a light wind. And with no wind two 75 Hp Yanmar's give a comfortable cruising speed. Everything is very open, spacious as in a luxury loft. Great interior, noble materials wherever you look. Elegance is a main detail on board of the Nautitech 542, is an owner version, well kept, many options and never been chartered.

Ger Bayens

SPECIFICATIONS

Dimensions	16.46 x 8.55 x 1.57 (m)	Builder	Nautitech Catamarans
Built	2014	Cabins	3
Material	GRP	Berths	6
Engine(s)	2 x Yanmar 4JH4- TE diesel	Hp/Kw	2 x 75 (hp), 55.13 (kw)
Asking price	€ 790.000 (VAT Paid)	Lying	Greece

CONTACT

Sales office	De Valk Thuishaven	Telephone	+31 35 5829042
Address	Peperstraat 7 1411 PX Naarden The Netherlands	E-mail	thuishaven@devalk.nl

DISCLAIMER

These particulars are given in good faith as supplied but cannot be guaranteed.



GENERAL

Model	NAUTITECH 542
Type	catamaran sailing yacht
LOA (m)	16,46
LWL (m)	16,24
Beam (m)	8,55
Draft (m)	1,57
Air draft (m)	21,80
Headroom (m)	1,95
Year built	2014
Launched	2015
Builder	Nautitech Catamarans
Country	France
Designer	Marc Lombard / Franck Darnet
Displacement (t)	16
CE norm	A
Hull material	GRP
Hull colour	white
Keel type	fin keel
Superstructure material	GRP
Deck material	GRP
Deck finish	non-skid moulded in
Superstructure deck finish	non-skid moulded in
Cockpit deck finish	teak
Antifouling (year)	reactivated (2019) Coppercoat
Window material	polycarbonate
Deckhatch	flush deck hatches 11x
Portholes	aluminium
Fuel tank (litre)	800 (2x 400)
Level indicator (fuel tank)	yes
Freshwater tank (litre)	500 (2x 250) + harbor water connection



Level indicator (freshwater)	yes
Blackwater tank (litre)	2x 98 Ltr
Level indicator (blackwater)	LED indication
Blackwater tank extraction	deck extraction + pump
Wheel steering	cable steering 2x Carbon
Emergency tiller	yes

ACCOMMODATION

Cabins	3
Berths	6
Crew cabin	possible
Crew berths	2
Interior	American maple
Floor	wood
Open cockpit	yes
Headroom saloon (m)	1,97
Heating	Reverse cycle airco
Air-conditioning	reverse cycle airco
Navigation center	forward facing
Chart table	yes
Aft Cabin	2x
Dinette	dining table with adjustable foots for variable lounge area with new cushions (2019)
Sliding door to cockpit	yes
Galley	yes
Countertop	corian
Sink	stainless steel 2x
Cooker	calor gas 3-burner
Oven	yes
Microwave	yes
Fridge	1x in galley with two drawers 1x in starboard hull 2x



Freezer	in starboard hull 1x
Hot water system	220V + engine 2x 60ltr
Water pressure system	yes
Ice maker	Isotherm
Owners cabin	French bed
Bed length (m)	high density foam mattress with slats 2,00 x 1,55
Wardrobe	hanging and shelves
Bathroom	en suite
Toilet	en suite
Toilet system	electric Fresh water
Wash basin	in the bathroom Double sink
Shower	separate With teak grate
Extra info	Bed with upholstery headboard / cabin fan / shelves / drawers and settee aft
Guest cabin 1	French bed VIP Guest Cabin
Bed length (m)	high density foam mattress with slats 2,00 x 1,55
Wardrobe	hanging and shelves
Bathroom	en suite
Toilet	en suite
Toilet system	electric Fresh water
Wash basin	in the bathroom
Shower	separate
Extra info	the 2 front cabins are changed into lightweight double level storage rooms or beds
Guest cabin 2	yes
Bed length (m)	2,00 mtr
Wardrobe	hanging and shelves
Bathroom	en suite
Toilet	en suite
Toilet system	electric Fresh water
Wash basin	in the bathroom
Shower	separate



Crew cabin(s)	starboard bow area can be used as storage or crew berth
Extra info	in all cabins LED lights
Washing machine/dryer combi	6 Kg
Extra info	matress's new 2022

MACHINERY

No of engines	2
Make	Yanmar
Type	4JH4- TE
HP	75
kW	55.13
Fuel	diesel
Year installed	2014
Maximum speed (kn)	9,5
Cruising speed (kn)	7,5
Engine hours	1330
Engine cooling system	freshwater heat exchanger
Drive	sail-drive
Saildrive seal	yes
Engine controls	yes
Gearbox	mechanical
Propeller type	folding Flexofold
Propeller blades	3
Manual bilge pump	2x
Electric bilge pump	4x
Bilge alarm	yes
Electrical installation	230/110/24/12
Generator	silent separator ONAN 11 Kw
Running hours generator	930
Batteries	New 2022
Start battery	2x 110 Ah



Service battery	8x 165 Ah Gel Cel
Generator battery	1x 110 Ah
Battery monitor	yes
Battery charger	2x Mastervolt 100 Ah
Inverter	1x Victron Phoenix 3000W/230V 1x Mastervolt 2000W/120V 1x
Solar panel	plus 3 Victron invertors 4x (2020) total 840w
Shorepower	yes
Watermaker	Dessalator D200 50gph
Extra info	2x 80 Ah alternators
Extra info	Electrical systems can be checked from your mobile phone
Extra info	extra noise reduction panels and hoses in both engine rooms,

NAVIGATION

Compass	2x
Electric compass	yes
Depth sounder	yes
Log	yes
Windset	yes
Repeater	Furuno multi display
VHF	Garmin 300i + Iridium Sat Phone
VHF handheld	yes
Autopilot	(new displays 2022) Furuno Navpilot 711c
Radar	Furuno Wifi Radar (2019)
GPS	Furuno GP33
Radar/GPS/plotter	yes
Personal computer	Navcore (2022) & 17"Neovo display
Wifi antenna	Bad Boy Extreme
Electronic chart(s)	New 2022
AIS transponder	Class B
EPIRB	yes
Personal MOB transmitter	Safelink AIS MOB System



Navigation lights	LED
Extra info	Navnet TX9"Chartplotter, Furuno RD 33 multi display, Autopilot, Music remote control, Quick Chain counter, Engine controls PORT HELM;
Extra info	Furuno RD 33 multi display, Furuno FL 50 wind display, Furuno autopilot, Garmin VHF, engine controls STARBOARD HELM

EQUIPMENT

Fixed hardtop	yes
Bimini	above both helm stations
Sun awning	Sunbrella
Cockpit cushions	yes
Cockpit table	yes
Boarding ladder	stainless steel
Gangway	Carbon
Deck shower	yes
Anchor	Spade 45 Kg
Anchor chain	80 Mtr.
Anchor 2	FOB 34 Kg Folding 35 Kg
Chain counter	yes
Windlass	electrical Quick 1700W (2023)+ remote controle
Deck wash	high pressure pump
Dinghy	rigid inflatable Highfield OM 420, Alu bottom (2014)
Outboard	with stainless steel towbar Honda BF50 Hp
Davits	stainless steel High Load
Davits controls	manual
Sea railing	yes
Railing side opening gates	2x
Pushpit	yes
Pulpit	with a front seat
Life raft	2x (4WATER)
Life raft (pers)	6 person



Last life raft survey	2015
Fenders	yes
Mooring lines	yes
TV	goes up and down from a storage place HAYER 80 (also connected to navigation)
TV receiver	connectable to shore
Radio-cd player	with remote control FUSION CD/DVD/MP3
iPod connection	yes
Cockpit speakers	plus outdoor Bose speakers in the front
Speakers in salon	yes
Fire extinguisher	6x powder
Extra info	The owner says; This Catamaran is a perfect performing family & friend entertainment voyager. I chose for this yacht for its great 360 visibility, easy handling, low maintenance and great storage places for all the toys I needed. Often she was sailed single handed. I changed many small things to make life aboard safe, easy and relaxed. Sailing wakawaka will make not only you happy but also people passing by where spotted happy after seeing this happy design. Often you will get thumbs up, singing or even dancing people.

RIGGING

Rigging	cat-rig
Standing rigging	wire
Brand mast	Marechal
Material mast	aluminium
Spreaders	2x
Mainsail cover	with Lazy Jacks (2021)
Battcars	upgraded Harken
Fully battened mainsail	with 2:1 halyard 99m2, Incidence (2014) square top
Jib	selftacking 46 m2, Incidence (2014)
Genoa furler	yes
Code Zero	yes



Gennaker	yes
Reefing System	slabreefing
Primary sheet winch	Harken Performa 1x 70.2. / 1x 70.2 electric
Secondary sheet winch	Harken Performa 2x 60.2
Halyard winches	at the mast Harken Performa 1x 50.2
Gennaker pole	yes

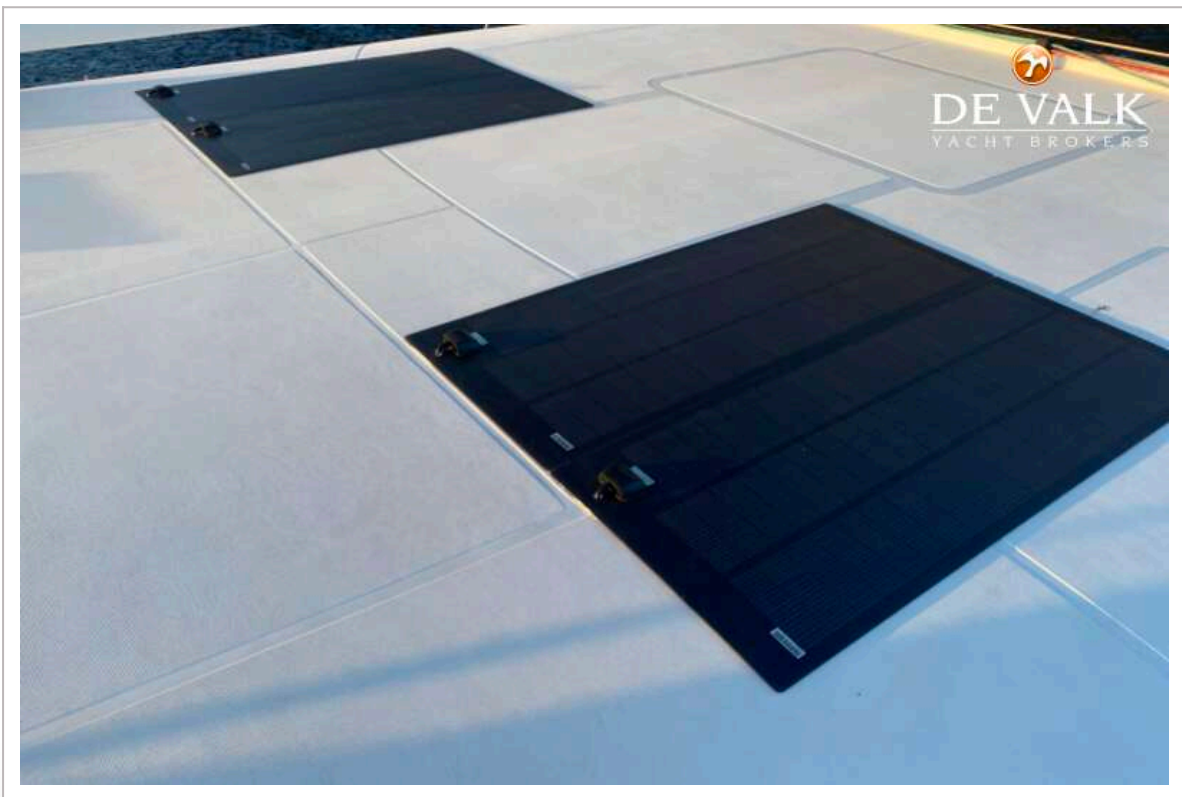
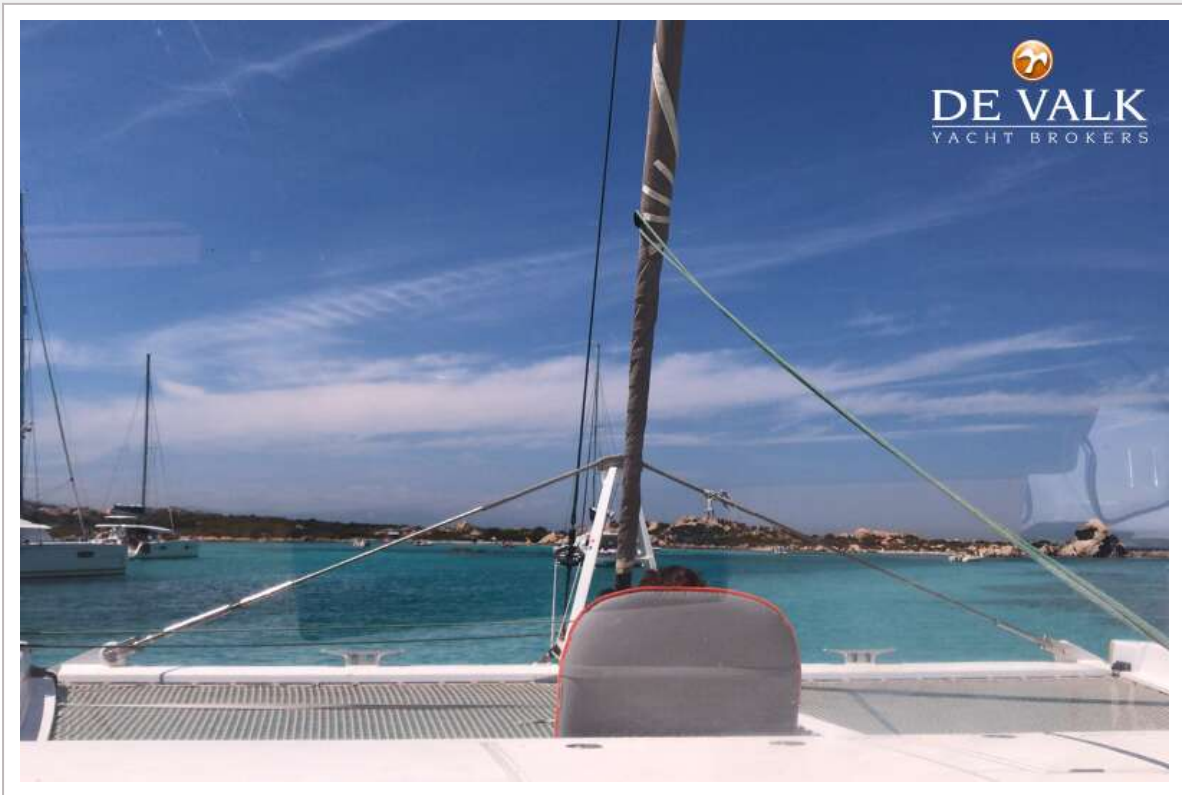


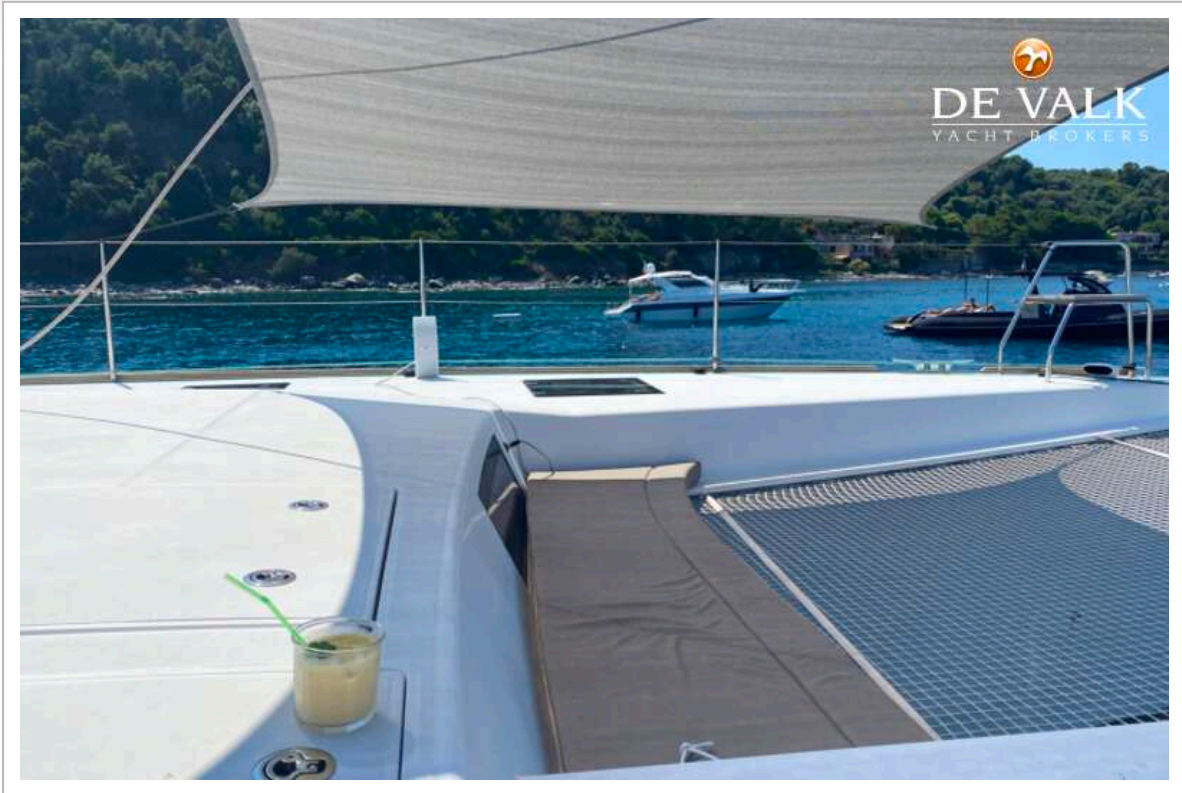


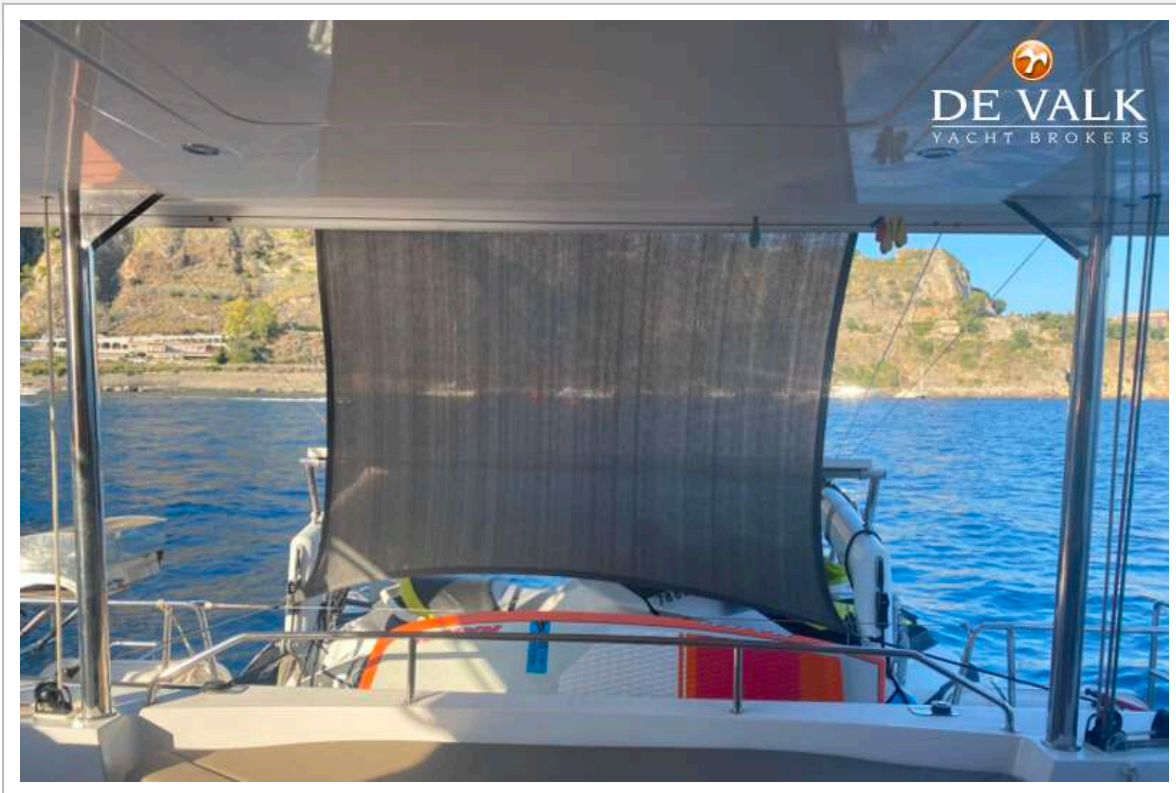


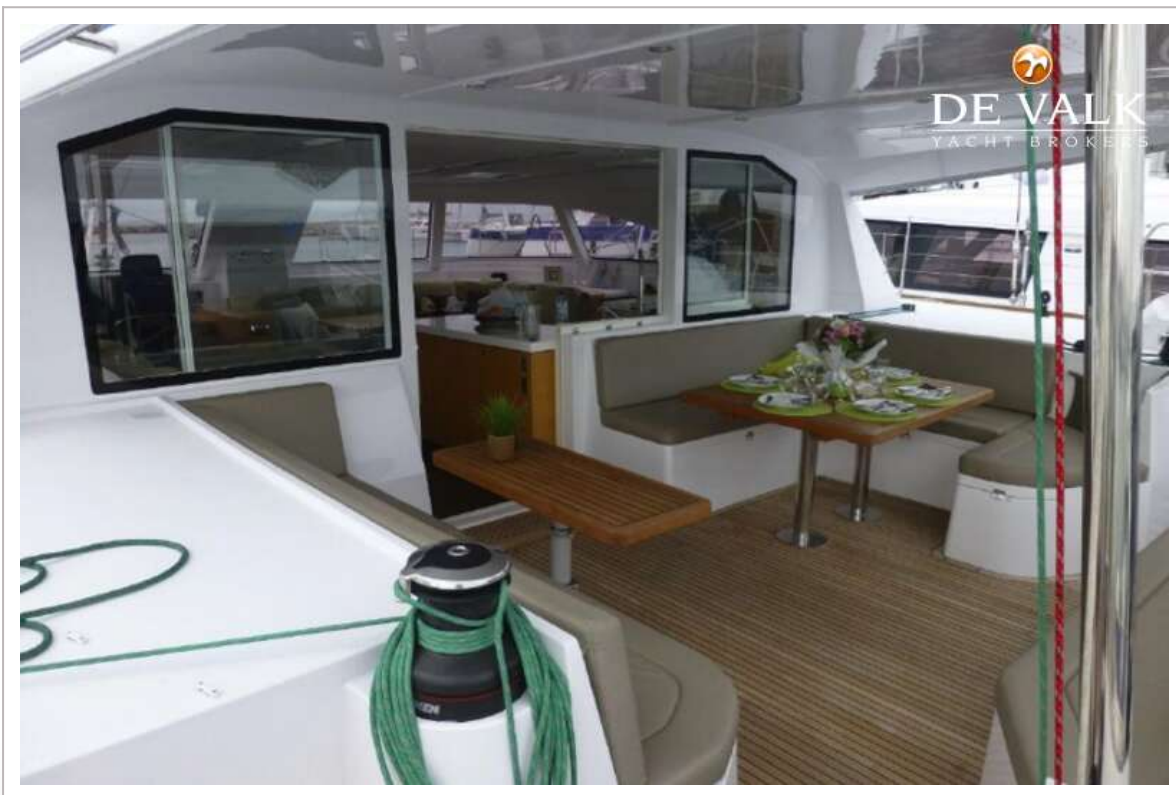












NAUTITECH 542



NAUTITECH 542

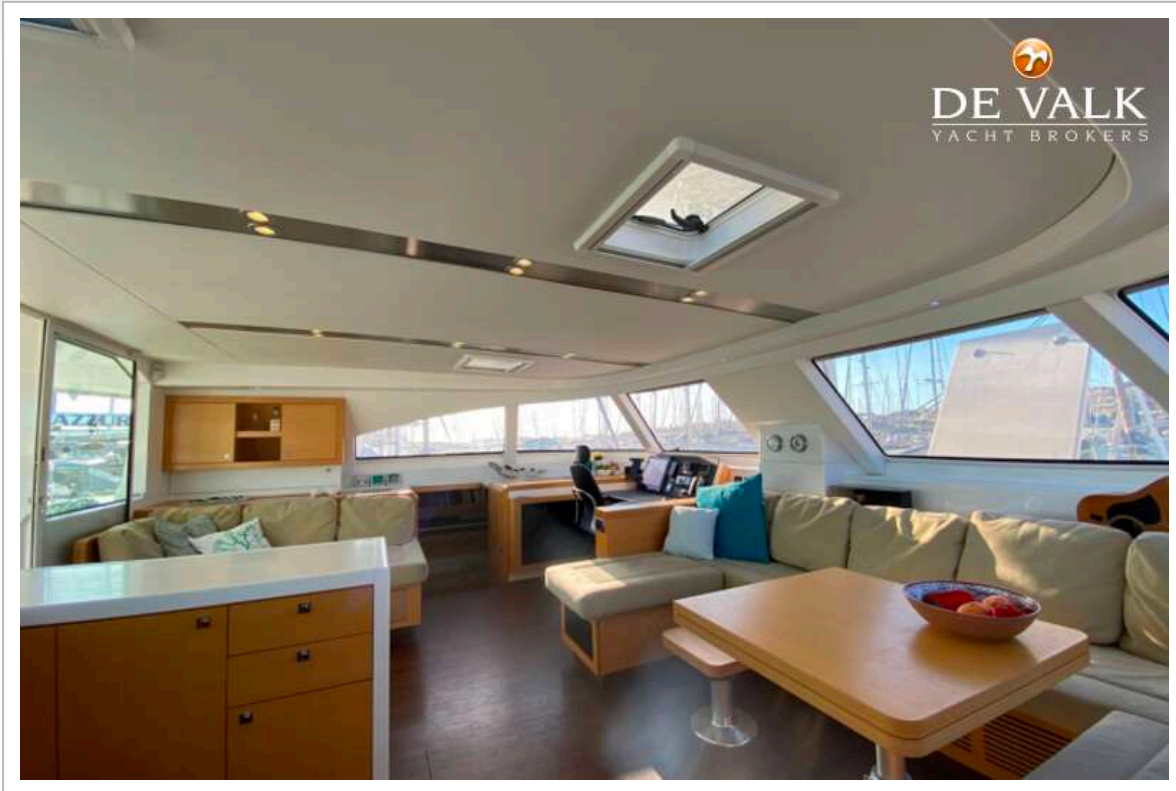


NAUTITECH 542

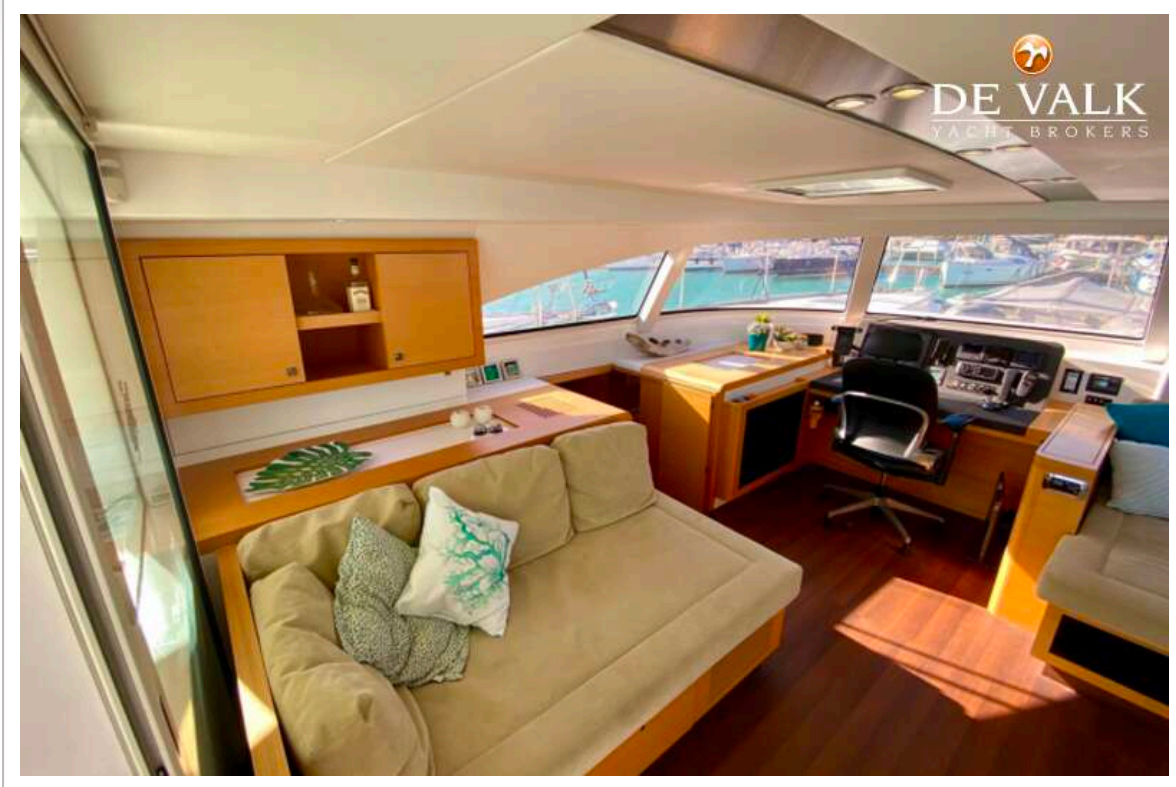


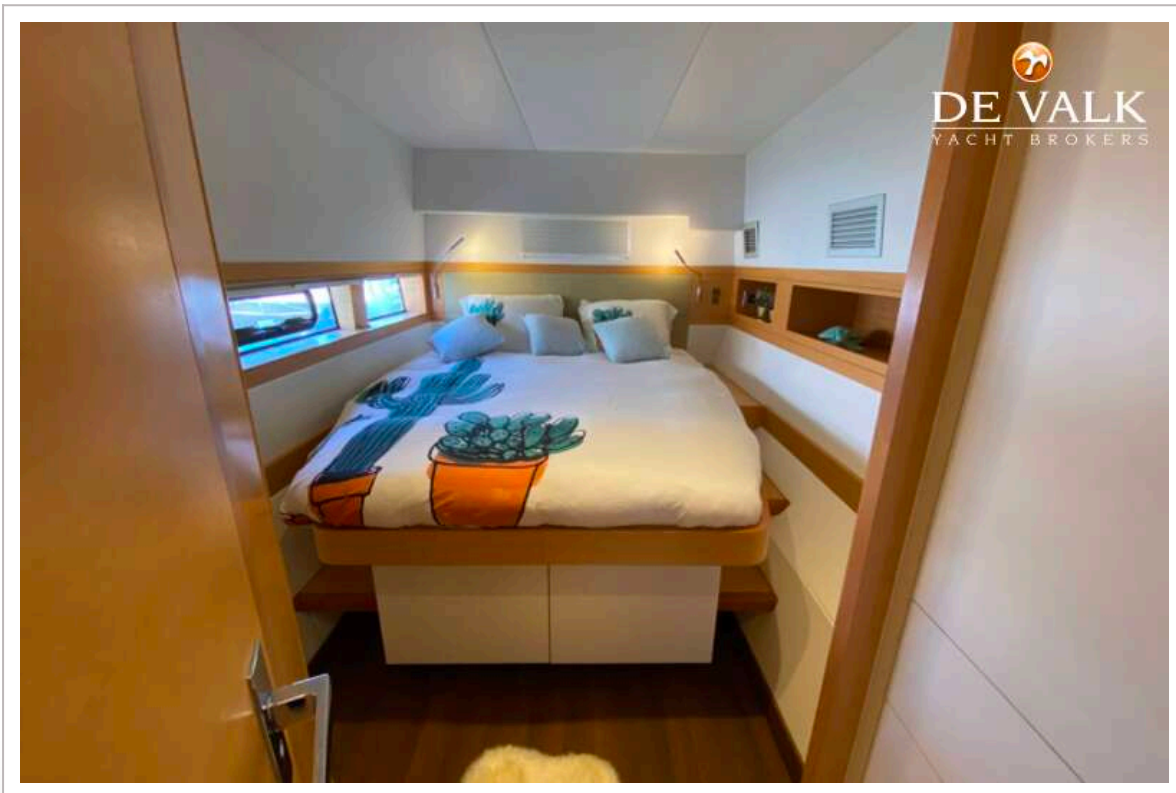
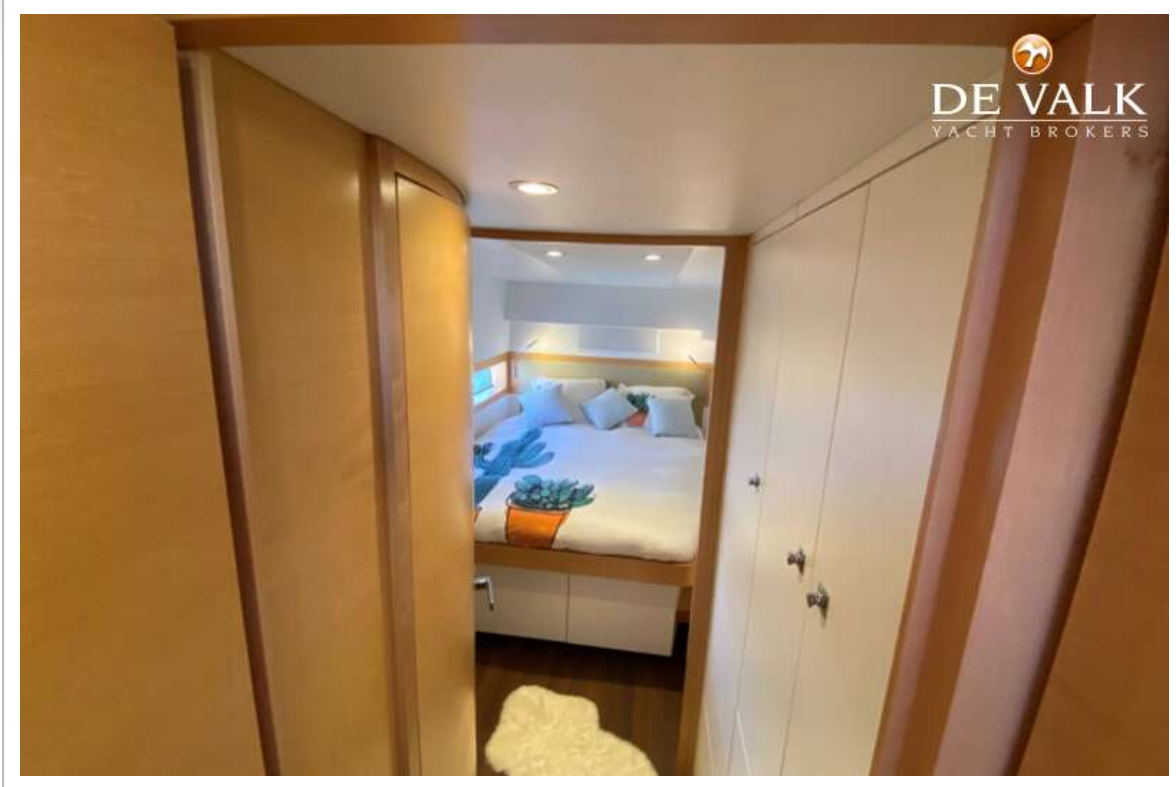
NAUTITECH 542





NAUTITECH 542









NAUTITECH 542



