



DE VALK  
YACHT BROKERS



## FLEUR DE LYS 54



DE VALK  
YACHT BROKERS

# FLEUR DE LYS 54

## BROKER'S COMMENTS

Rare opportunity. A true gentleman's yacht! Very comfortable and economical cruising yacht. Her indestructible hull is made of strong Iroko, by Dagless Shipyard. She has it all for a pleasant stay on board. Air-con and heating as well as a washing and drying room. Above all, the wooden construction offers the best climate you can have on a ship. Current owner has invested a lot in modern MAN engines and a strong 25 kW genset. With her large engines Lady Gala reaches 8,5kn cruising speed at 1300 rpm and only 22 l/h. The hydraulic bow thruster allows a small crew to manoeuvre easily.

*Miha Spendal*

## SPECIFICATIONS

<b>Dimensions</b>	16.20 x 4.60 x 1.55 (m)	<b>Builder</b>	Dagless LTD
<b>Built</b>	1974	<b>Cabins</b>	3
<b>Material</b>	Wood	<b>Berths</b>	6
<b>Engine(s)</b>	2 x MAN D2866 L diesel	<b>Hp/Kw</b>	2 x 225.00 (hp), 165.60 (kw)
<b>Asking price</b>	€ 249.900 (VAT Paid)	<b>Lying</b>	elsewhere / Not at sales office

## CONTACT

<b>Sales office</b>	De Valk Istria	<b>Telephone</b>	+386 (1) 600 2704
<b>Address</b>	(Marina Izola) Dantejeva Ulica 22 6310 Izola Slovenia	<b>E-mail</b>	istria@devalk.nl

## DISCLAIMER

These particulars are given in good faith as supplied but cannot be guaranteed.



## GENERAL

Model	FLEUR DE LYS 54
Type	motor yacht
LOA (m)	16,20
LWL (m)	14,00
Beam (m)	4,60
Draft (m)	1,55
Year built	1974
Launched	1975
Builder	Dagless LTD
Country	United Kingdom
Displacement (t)	26
CE norm	NA
Hull material	wood
Hull colour	White
Hull shape	deep-V
Superstructure material	wood Wood / aluminium
Rubbing strake	wood
Deck material	wood
Deck finish	non-skid paint
Superstructure deck finish	non-skid paint
Cockpit deck finish	teak
Antifouling (year)	2024
Window frame	aluminium
Window material	tempered glass
Flybridge cover	Yes
Flybridge cockpit cover	yes
Radar arch	non collapsible
Fuel tank (litre)	steel 1050
Fuel tank 2 (litre)	steel 1050
Level indicator (fuel tank)	yes



<b>Freshwater tank (litre)</b>	steel 1600
<b>Level indicator (freshwater)</b>	Manual gauge
<b>Wheel steering</b>	yes
<b>Inside helm position</b>	yes
<b>Flybridge helm position</b>	yes
<b>More info on hull</b>	In excellent condition
<b>More info on paintwork</b>	Refreshed 2023 and 2024

## ACCOMMODATION

<b>Cabins</b>	3
<b>Berths</b>	6
<b>Interior</b>	American maple
<b>Floor</b>	Vinyl and carpet
<b>Aft deck</b>	yes
<b>Heating</b>	central hot water
<b>Air-conditioning</b>	yes
<b>Dining room</b>	yes
<b>Opening door to aft deck</b>	yes
<b>Galley</b>	yes
<b>Countertop</b>	tiles
<b>Sink</b>	stainless steel
<b>Cooker</b>	ceramic
<b>Oven</b>	Electric, Bosch
<b>Microwave</b>	Bosch
<b>Fridge</b>	2 x 24V units
<b>Freezer</b>	yes
<b>Hot water system</b>	220V Boiler 40lt
<b>Water pressure system</b>	electrical
<b>Dishwasher</b>	Bosch
<b>Crockery</b>	yes
<b>Owners cabin</b>	double bed



Wardrobe	hanging/drawers/shelves
Bathroom	en suite
Toilet	en suite
Toilet system	electric
Shower	en suite
Guest cabin 1	v-bed
Wardrobe	hanging/drawers/shelves
Bathroom	shared
Toilet	shared
Toilet system	electric
Shower	shared
Guest cabin 2	double bed
Wardrobe	hanging/drawers/shelves
Bathroom	shared
Toilet	shared
Toilet system	electric
Shower	shared
Washing machine	Miele
Dryer	Bauknecht
Flybridge	yes

## MACHINERY

No of engines	2
Make	MAN
Type	D2866 L
HP	225
kW	165.60
Fuel	diesel
Year installed	1995
Engine hours	2250
Engine cooling system	freshwater heat exchanger



<b>Drive</b>	shaft
<b>Engine controls</b>	pneumatic
<b>Gearbox</b>	mechanical
<b>Bowthruster</b>	hydraulic Side-Power SEP 150/215
<b>Propeller type</b>	fixed
<b>Propeller blades</b>	3 blade bronze
<b>Propeller shaft material</b>	stainless steel
<b>Electric bilge pump</b>	3 units
<b>Generator</b>	25kW, diesel
<b>Batteries</b>	yes
<b>Start battery</b>	yes
<b>Service battery</b>	16 x 105Ah
<b>Generator battery</b>	2 x 100Ah
<b>Battery charger</b>	Mastervolt
<b>Inverter</b>	2,5kW Mastervolt
<b>Shorepower</b>	with cable
<b>Watermaker</b>	Village Marine
<b>Stabilizers</b>	fin 4 x fixed, 2 x hydraulic

## NAVIGATION

<b>Compass</b>	Silva
<b>Compass on flybridge</b>	Silva
<b>Electric compass</b>	NECO
<b>Depth sounder</b>	yes
<b>Depth sounder/log</b>	2 x Tridata ST50 Autohelm
<b>Windset</b>	2 x Raymarine, Wind ST50
<b>Fish finder</b>	Koden CVS 108
<b>VHF</b>	3 units, Standard Horizon Eclipse, Raymarine Ray 240E and Ray 2
<b>VHF handheld</b>	yes
<b>Autopilot</b>	Autohelm 7000, from both steering positions



<b>Radar</b>	Koden MD3600
<b>GPS</b>	Koden KGP95
<b>Plotter</b>	Pan Nav 16 PRO
<b>Weather receiver</b>	Meteosat 2000 and Fastnet Mad 44
<b>Navtex</b>	Nav 4 Plus
<b>Radio receiver</b>	SSB Lowrance LVR 80 and ICOM ICM 700
<b>Navigation lights</b>	yes
<b>Loudhailer</b>	yes

## EQUIPMENT

<b>Winter cover</b>	yes
<b>Cockpit table</b>	yes
<b>Cockpit chairs</b>	yes
<b>Bathing platform</b>	yes
<b>Boarding ladder</b>	yes
<b>Gangway</b>	yes
<b>Anchor</b>	65kg, Hall
<b>Anchor chain</b>	12mm
<b>Windlass</b>	electrical 2000W / 24V, Orvea
<b>Capstan</b>	yes
<b>Dinghy</b>	rigid inflatable Novurania
<b>Outboard</b>	Honda
<b>Davits</b>	Lifting platform
<b>Grab rail (superstructure)</b>	wood
<b>Railing side opening gates</b>	yes
<b>Life raft</b>	container
<b>Lifejackets</b>	yes
<b>Safety harness</b>	yes
<b>Wiper</b>	yes
<b>Clearview window</b>	yes
<b>TV</b>	Saloon and owners cabin



Satellite	Tracvision
Radio-cd player	yes
DVD player	yes
Surround Sound System	yes
Fire extinguisher	yes
Extinguisher in engine room	yes
Auto extinguisher system	Thermo valve activated
Extra info	CO and GPL sensors
Extra info	Diving Compressor Bauer
Extra info	Air Compressor Tiger 265M





# FLEUR DE LYS 54





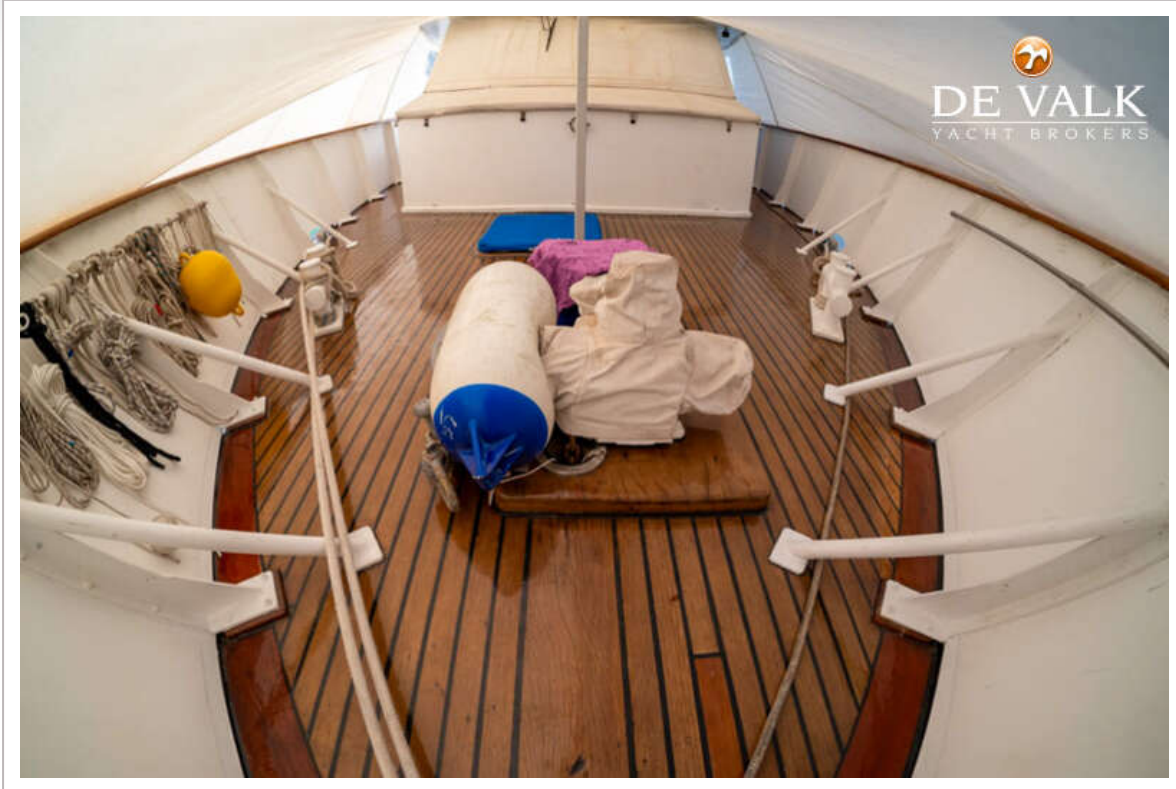
# FLEUR DE LYS 54



# FLEUR DE LYS 54



# FLEUR DE LYS 54



# FLEUR DE LYS 54



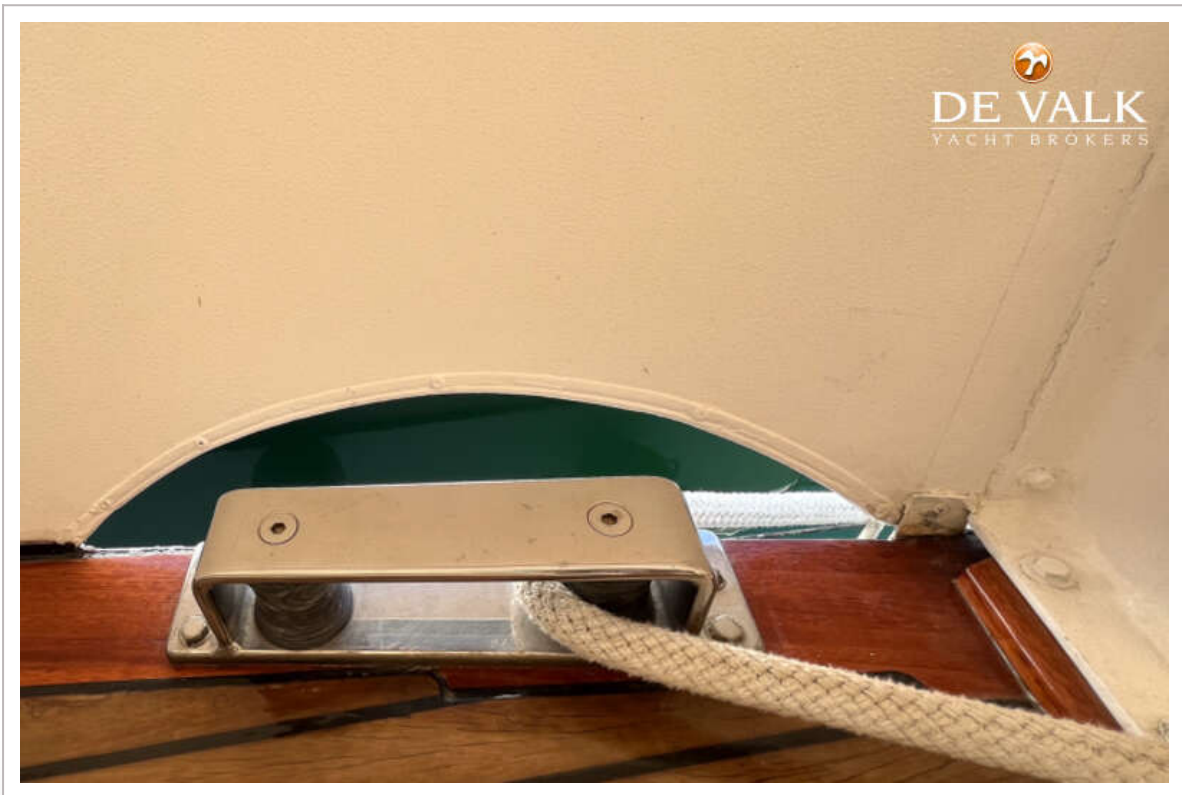
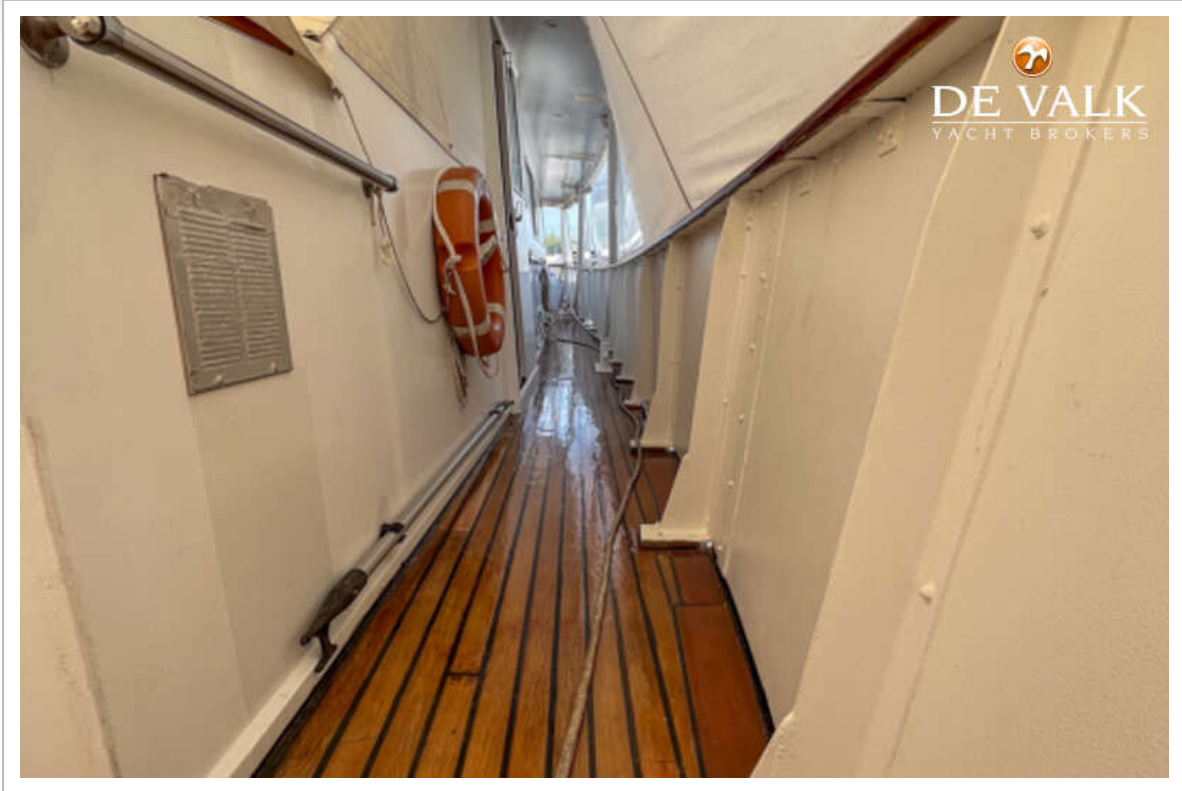
# FLEUR DE LYS 54



# FLEUR DE LYS 54

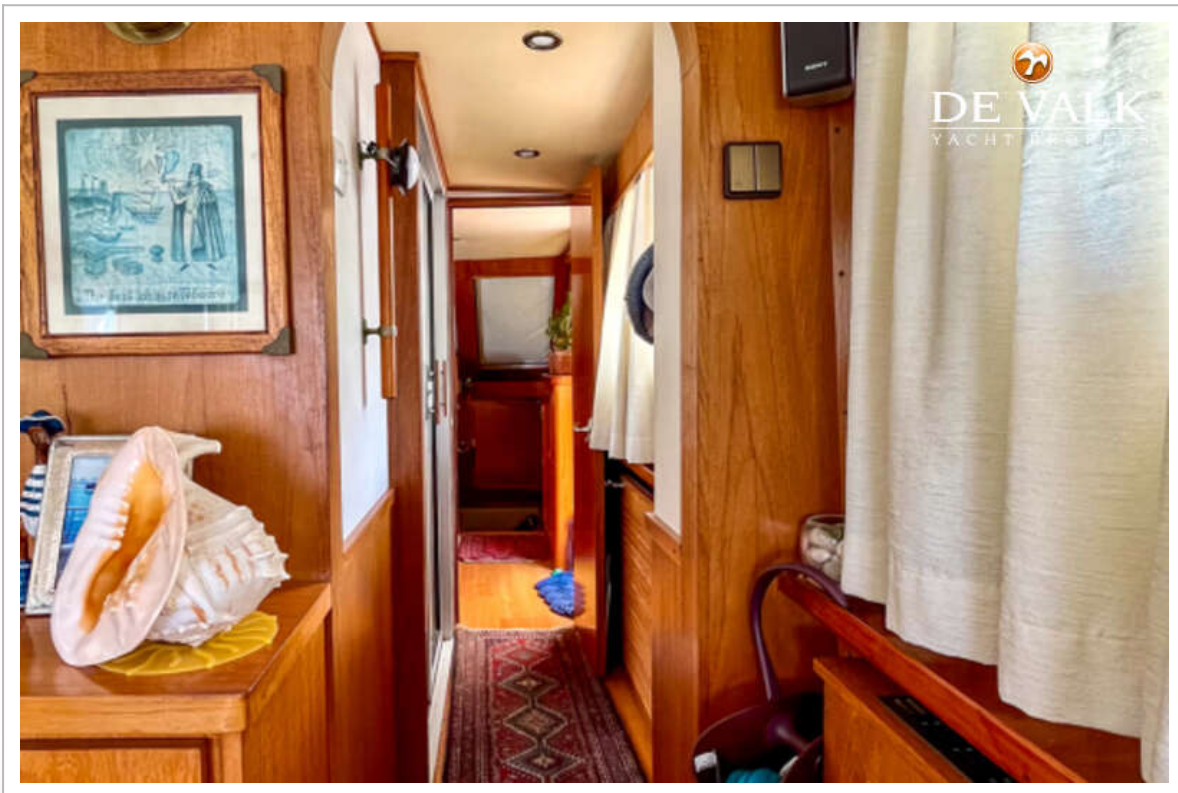
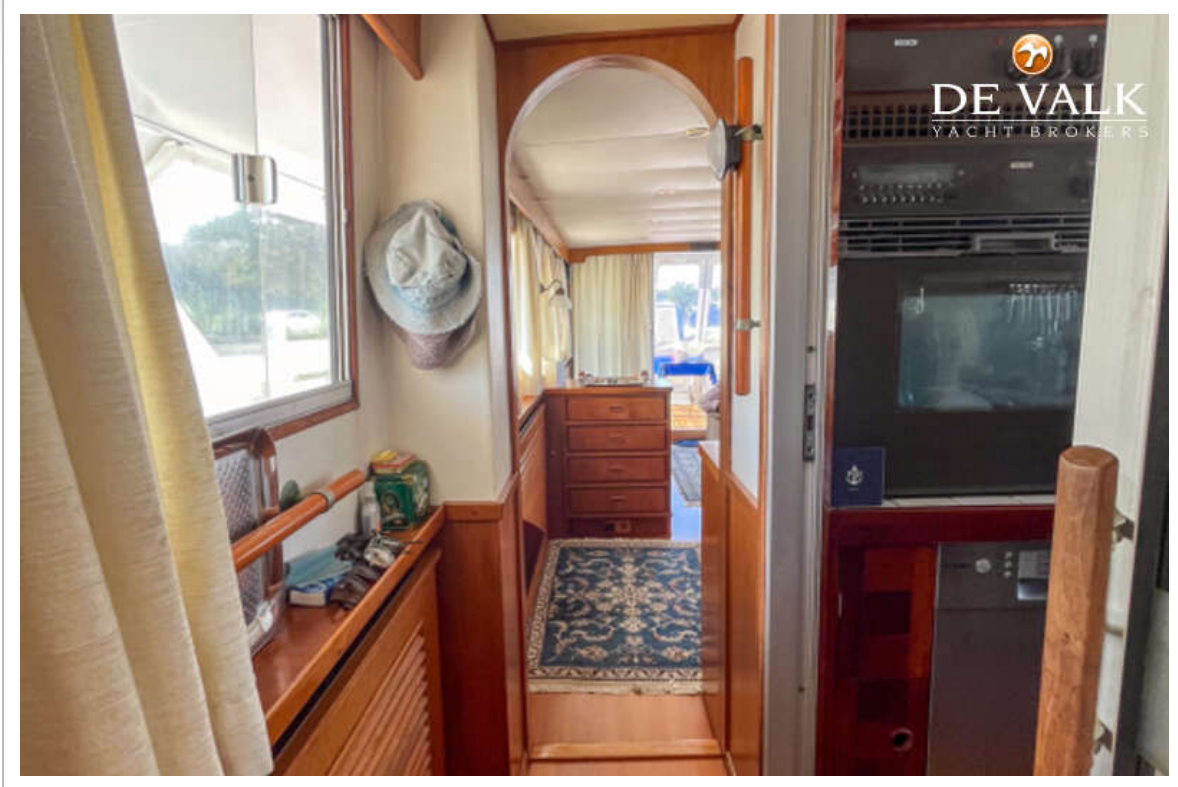




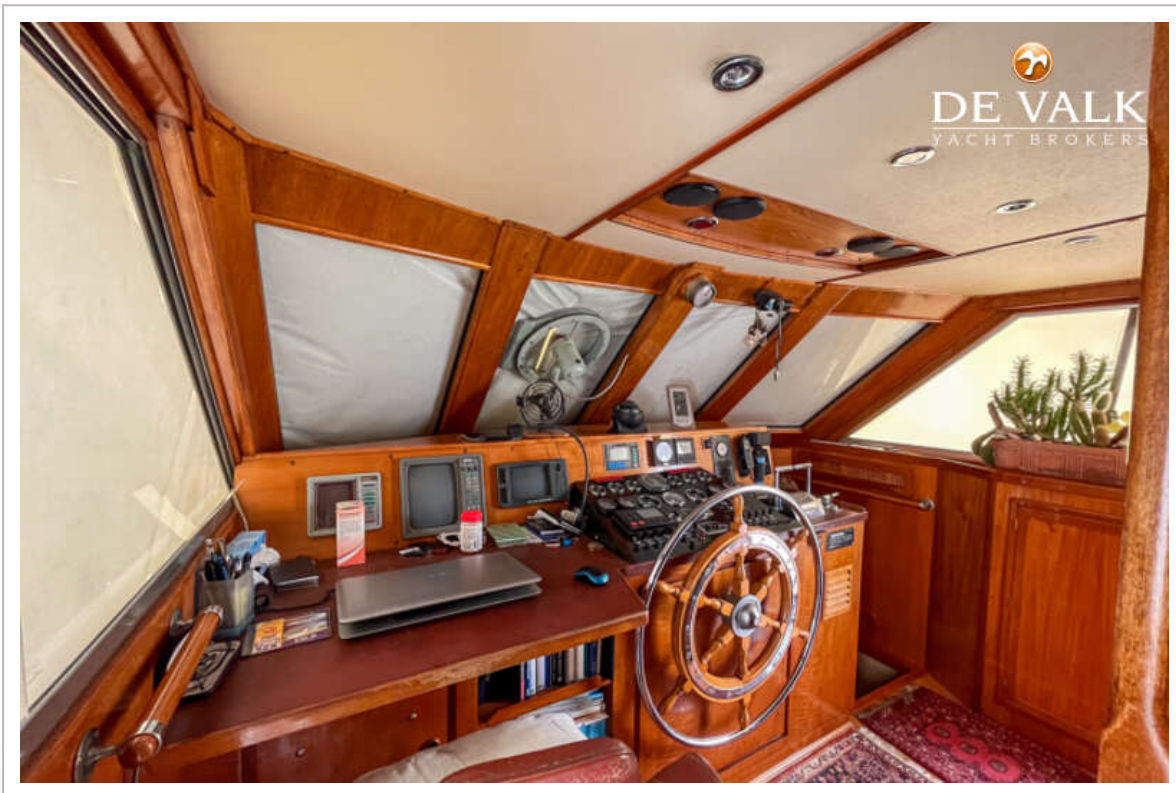
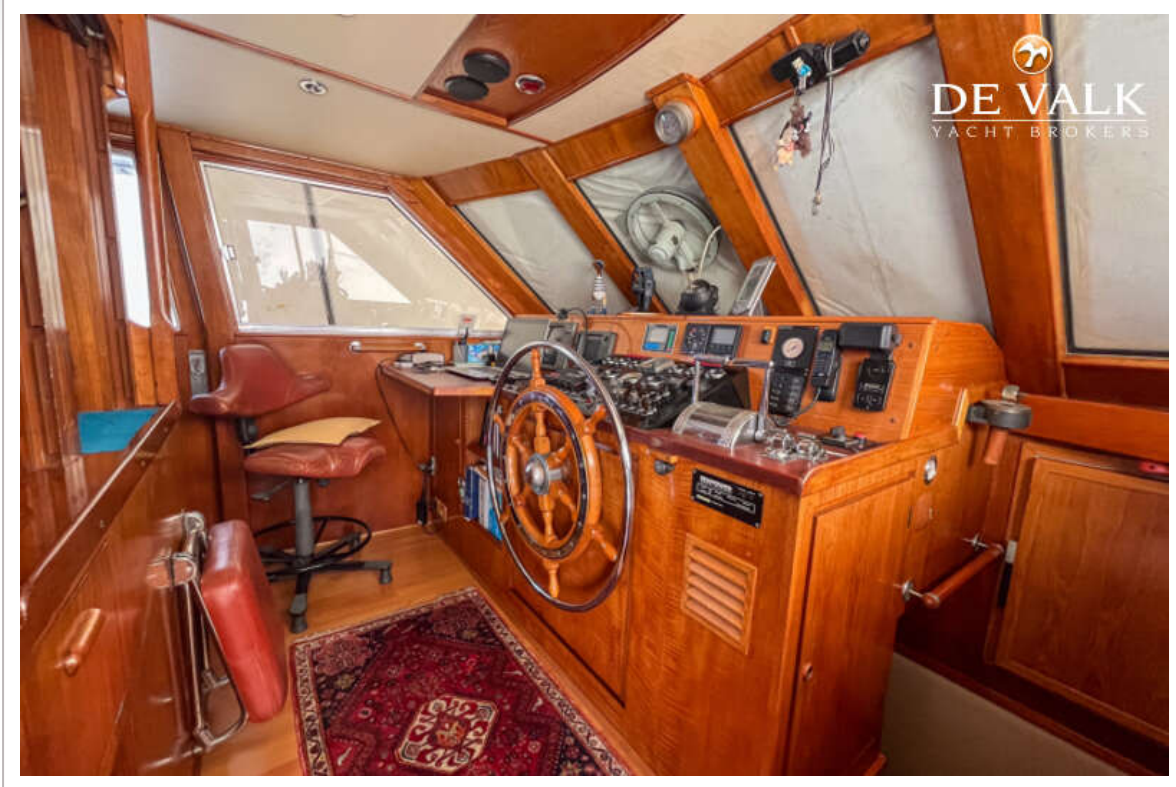


# FLEUR DE LYS 54

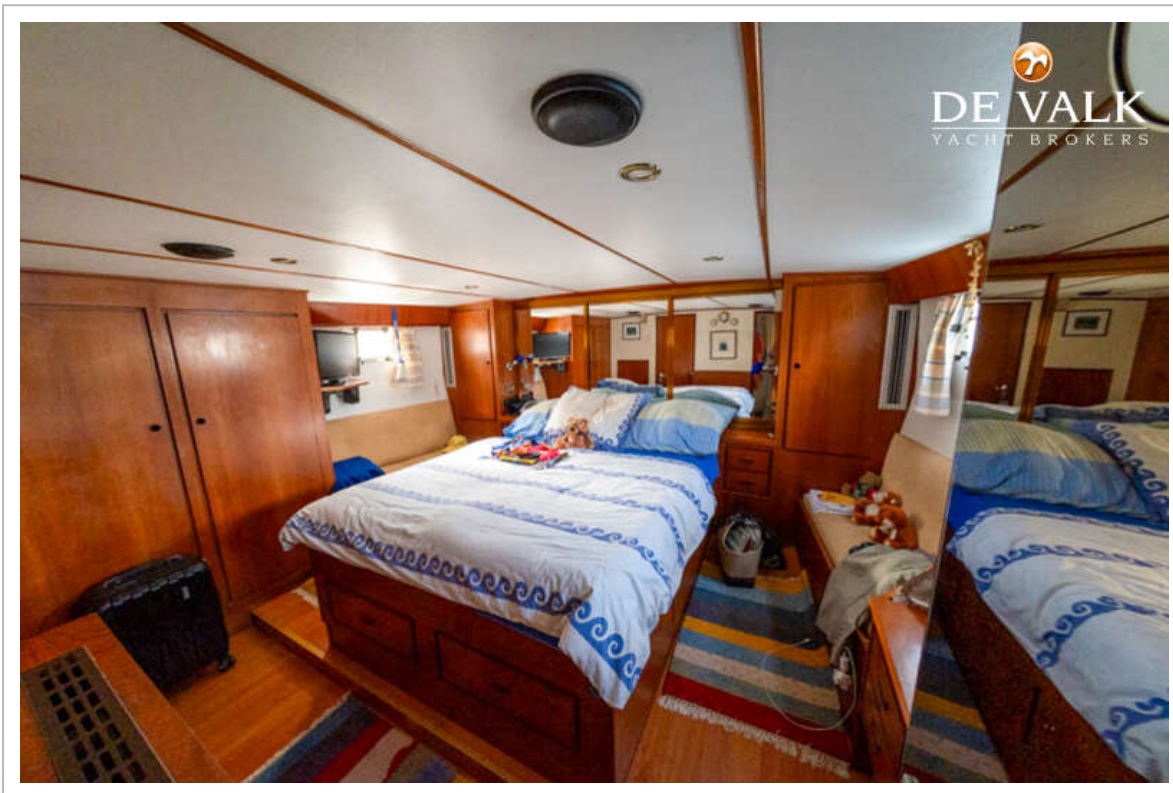
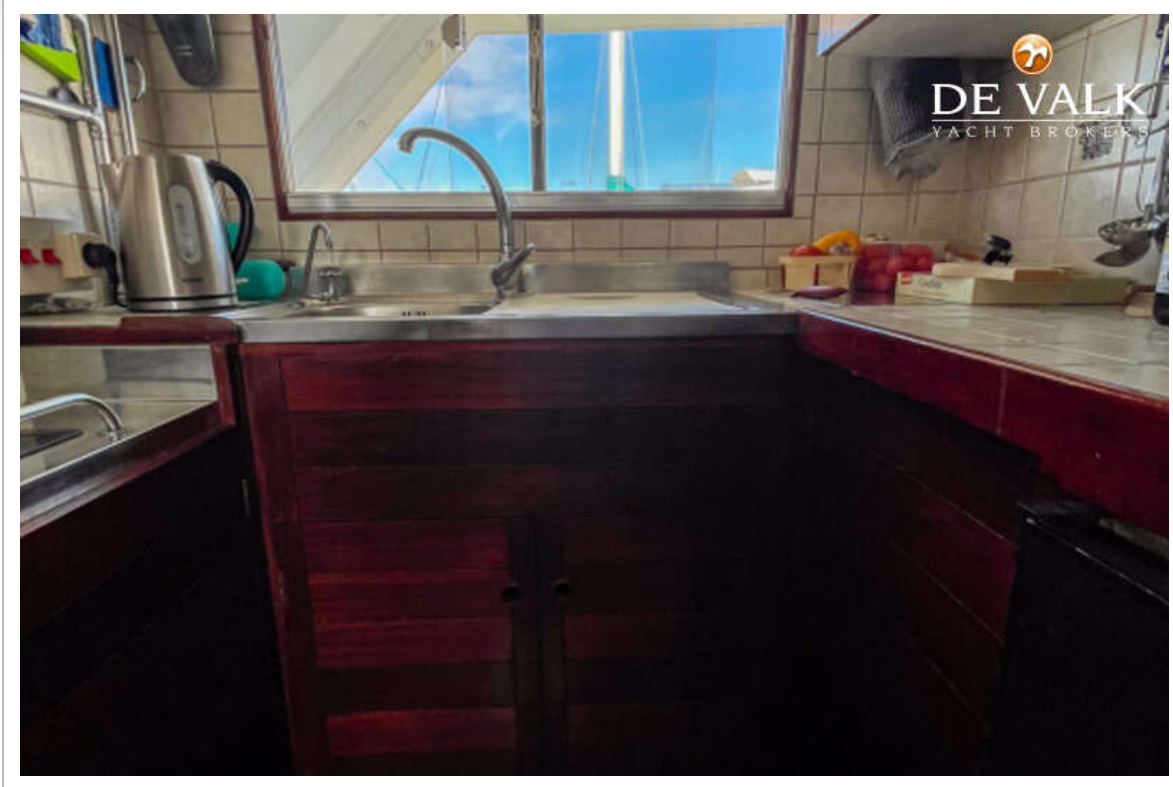




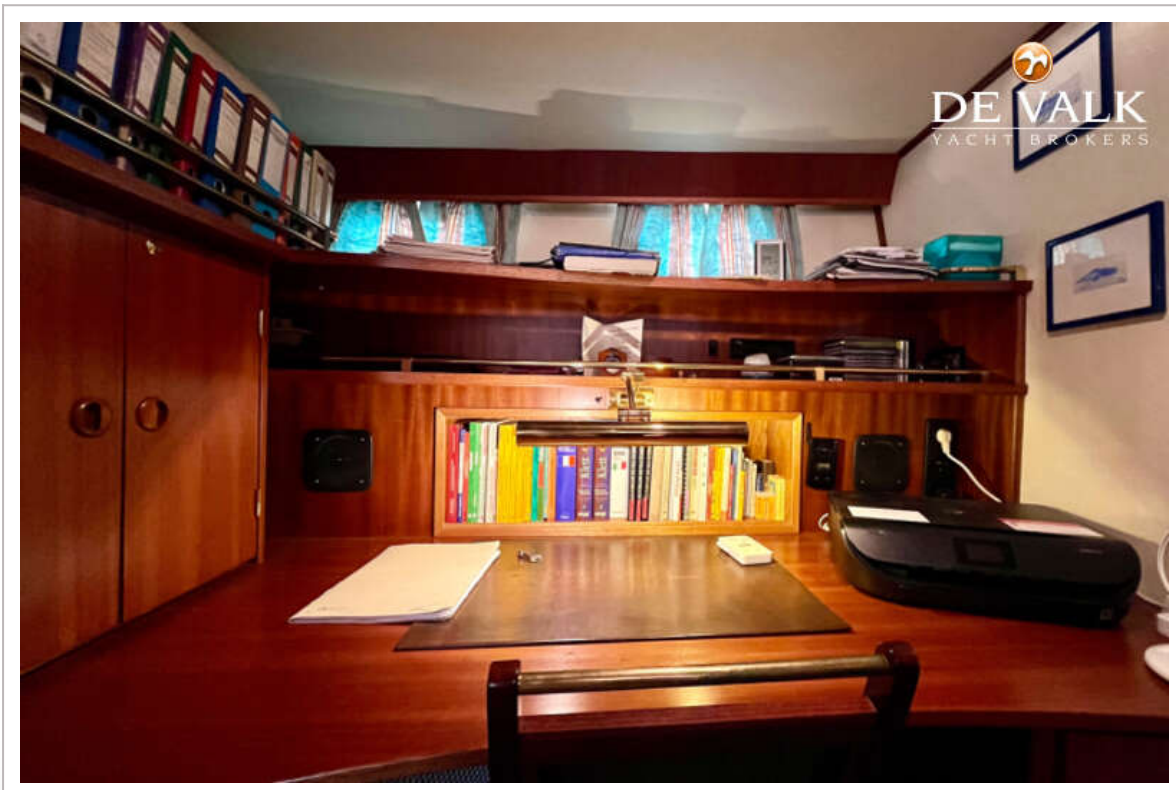
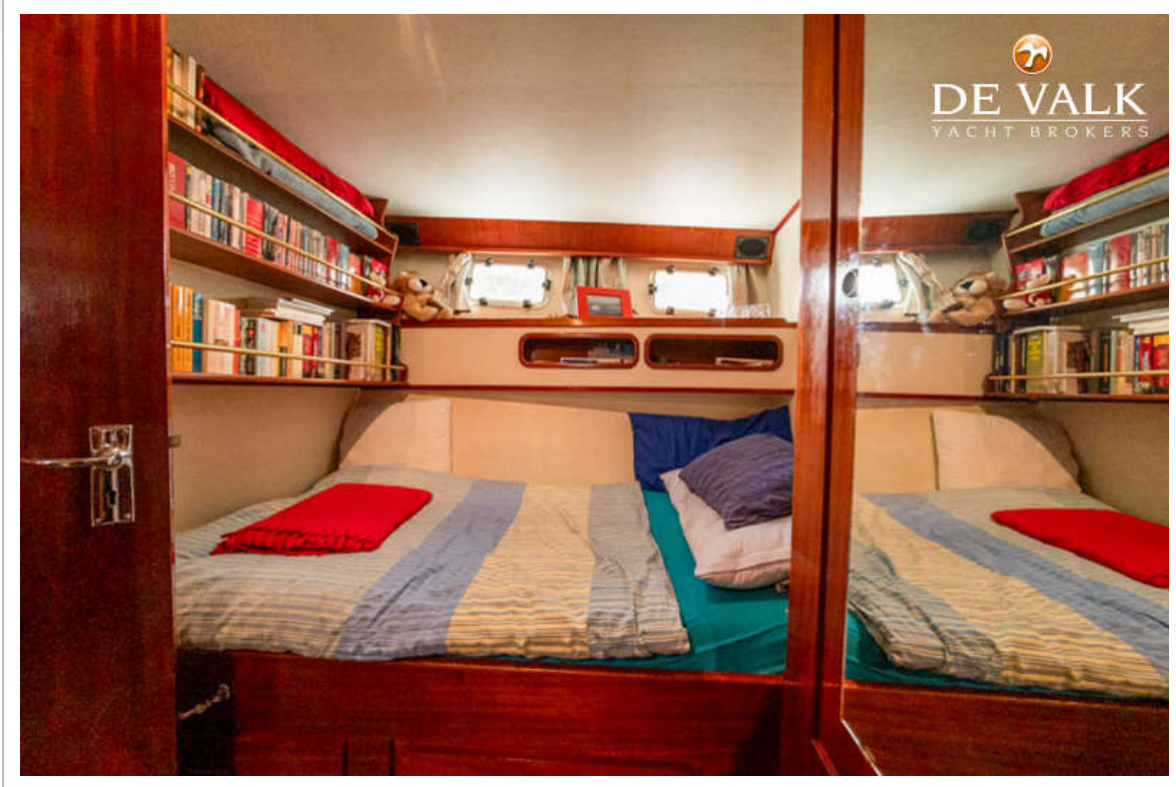
# FLEUR DE LYS 54

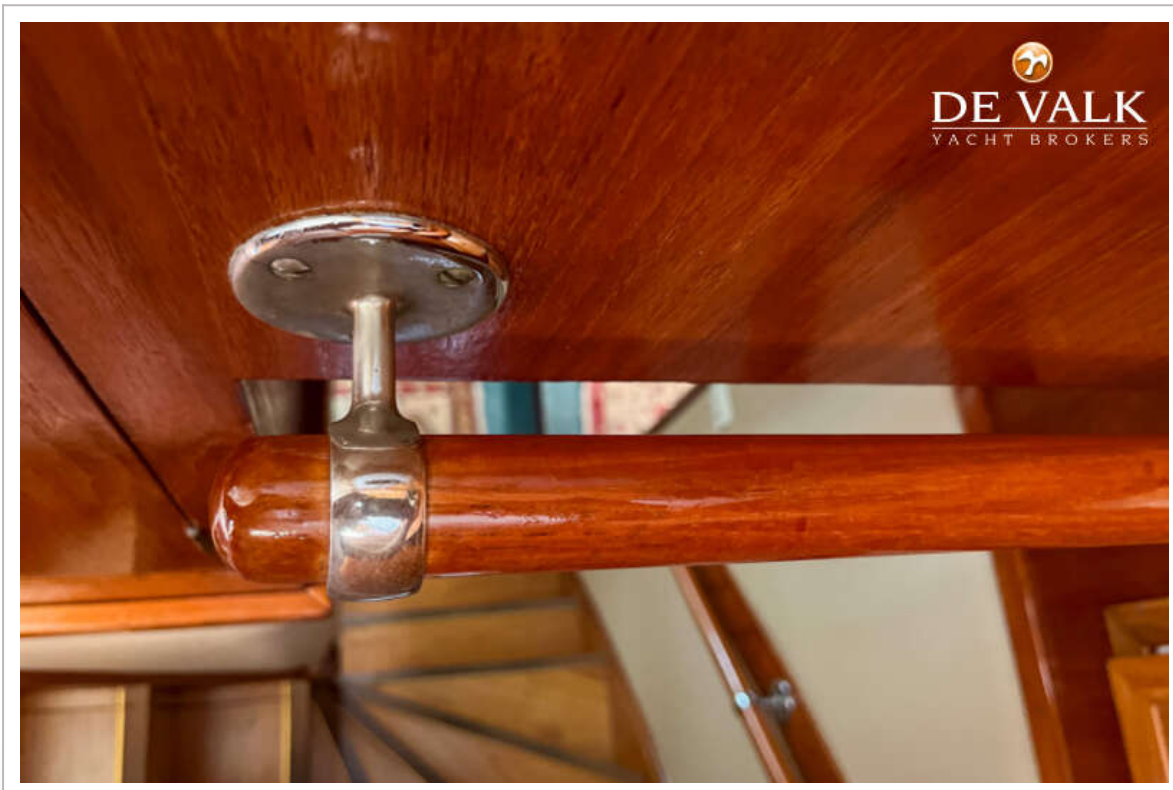


# FLEUR DE LYS 54

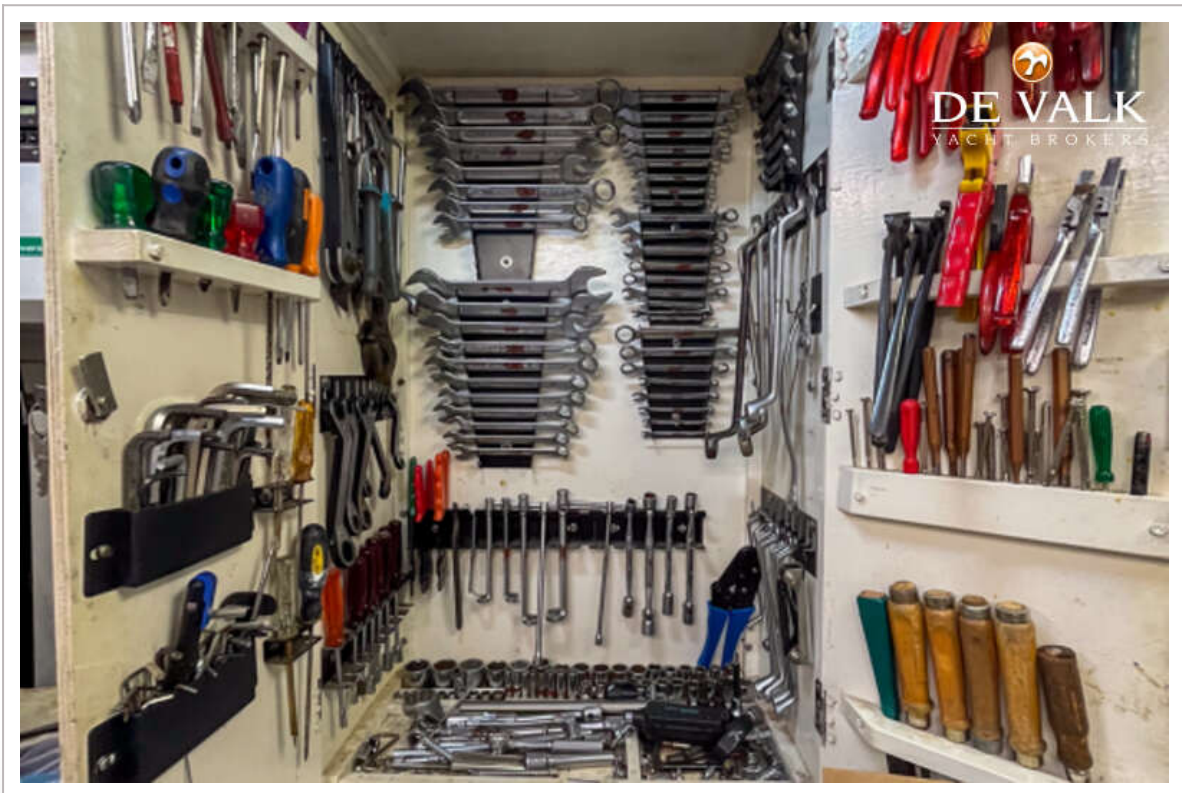
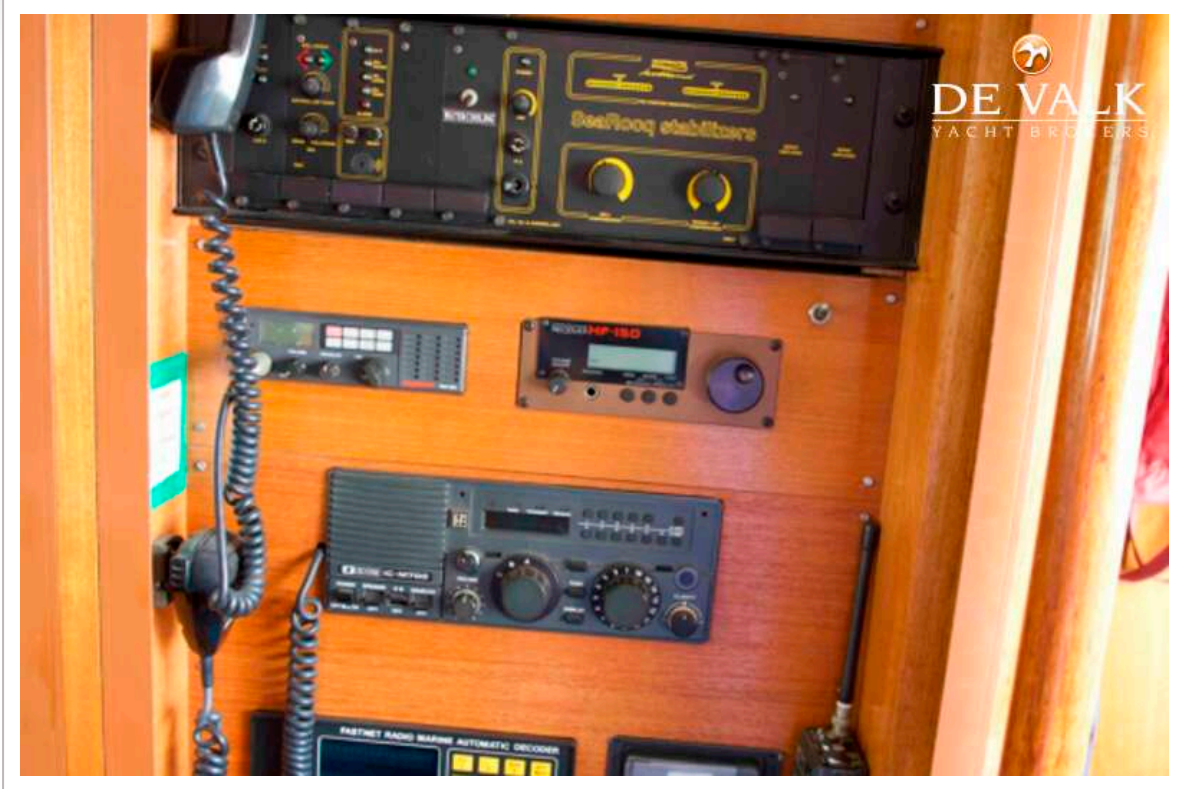


# FLEUR DE LYS 54



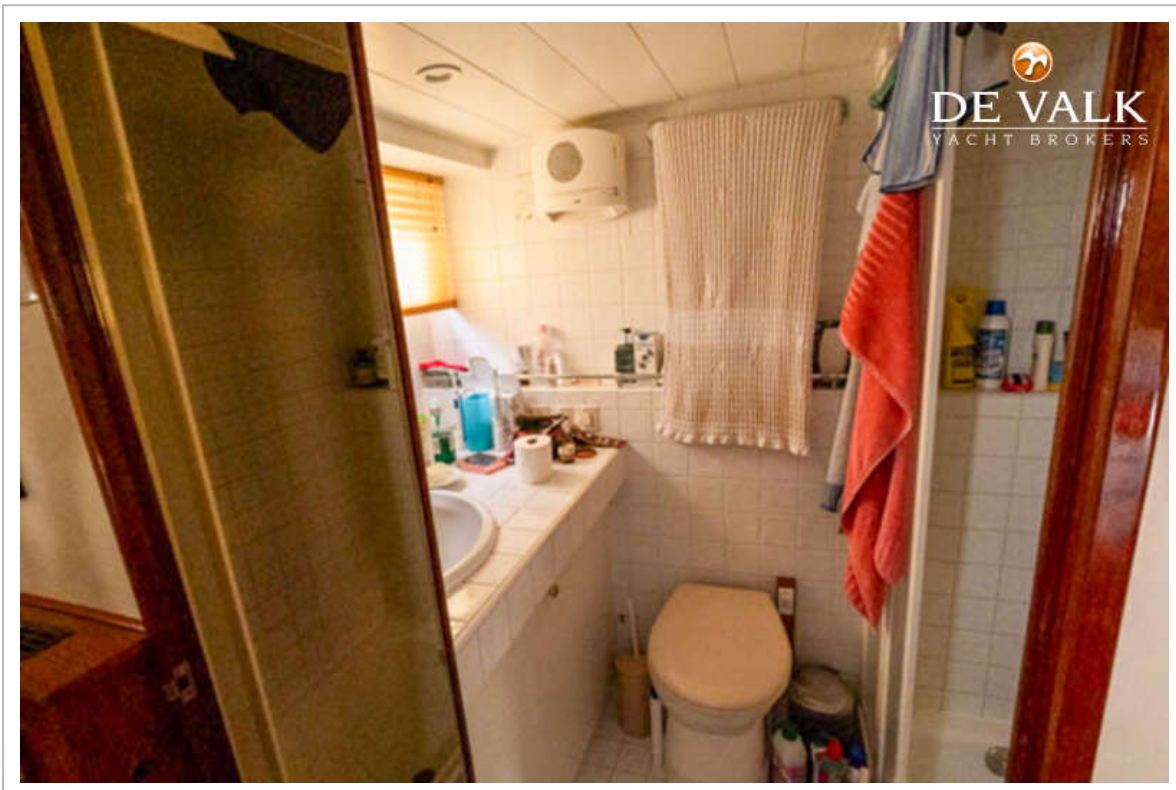
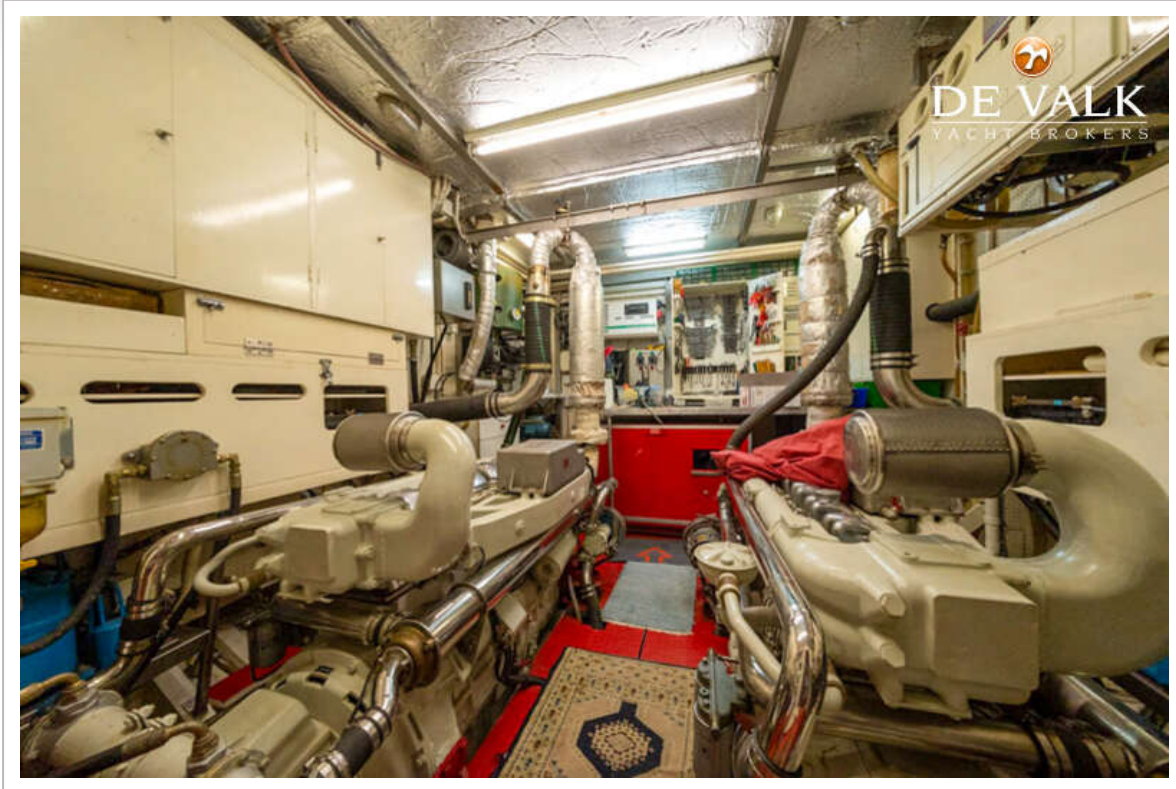


# FLEUR DE LYS 54





# FLEUR DE LYS 54



# FLEUR DE LYS 54

