



DE VALK
YACHT BROKERS



THIS YACHT WILL BE AUCTIONED

FEADSHIP PAVILJOENTJALK



DE VALK
YACHT BROKERS

FEADSHIP PAVILJOENTJALK

BROKER'S COMMENTS

The Feadship Paviljoentjalk De Vrouwe Christina is one of a kind classic superyacht built to extremely high quality. Fully rebuilt in 2017 with modern materials and open style interior, she is extremely comfortable for extended cruising and living on board. The yacht has no certificate of survey (CVO). All paintings aren't included in the auction. She will be auctioned online at Troostwijk auctions.com. Bids can only be placed online at Troostwijk Auctions. All information about the auction is available on the website <https://bit.ly/3RPvOcl>

Mark Hesselmans

SPECIFICATIONS

Dimensions	27.70 x 5.40 x 1.30 (m)	Builder	Feadship/ De Vries Aalsmeer
Built	1957	Cabins	3
Material	Steel	Berths	6
Engine(s)	2 x Perkins Sabre T1265 diesel	Hp/Kw	2 x 204 (hp), 150 (kw)
Asking price	sold (VAT)	Lying	at sales office

CONTACT

Sales office	De Valk Loosdrecht	Telephone	+31 35 582 90 30
Address	't Breukeleveense Meentje 6 1231 LM Loosdrecht / Wijdmeren The Netherlands	E-mail	loosdrecht@devalk.nl

DISCLAIMER

These particulars are given in good faith as supplied but cannot be guaranteed.



GENERAL

Model	FEADSHIP PAVILJOENTJALK
Type	sailing yacht
LOA (m)	27,70
Beam (m)	5,40
Draft (m)	1,30
Air draft (m)	19,50
Headroom (m)	2,10
Year built	1957
Launched	2017 after refit
Builder	Feadship/ De Vries Aalsmeer
Country	The Netherlands
Designer	Ginton and Olivier van Meer at refit
Displacement (t)	95
Gross tonnage	95
Hull material	steel
Hull colour	white
Hull thickness (mm)	8
Hull shape	round-bilged
Keel type	Dagger boards (2019) each with Quick Plano electric winches
Superstructure material	steel
Rubbing strake	stainless steel
Deck material	steel
Deck finish	teak
Superstructure deck finish	teak
Cockpit deck finish	teak
Antifouling (year)	Shipsonc active anti uw growth system.
Dorades	8 x stainless steel
Window material	double glazing Most opening
Deckhatch	3 x
Portholes	24



Insulation	rockwool
Radar arch	non collapsible
Fuel tank (litre)	steel 3000
Level indicator (fuel tank)	On panel and glass in engineroom
Freshwater tank (litre)	stainless steel 3000
Level indicator (freshwater)	yes
Blackwater tank (litre)	yes
Level indicator (blackwater)	yes
Blackwater tank extraction	deck extraction + pump Technomar, H2O Peroxide Wastewater treatment system
Greywater tank (litre)	Into black water tank for treatment
Wheel steering	hydraulic Hand with follow up pump
Inside helm position	yes
Emergency tiller	yes
More info on hull	Fully repainted 2017
More info on paintwork	Hull Under water painted Antifouling oktober 2019
Extra info	Woodsculptures by Dutch sculptor Anton Fortuin (1880-1967).
Extra info	yes
Extra info	Pianola in Lower salon

ACCOMMODATION

Cabins	3
Berths	6
Crew cabin	1
Crew berths	1
Interior	maple Custom modern
Layout	Owner
Floor	parquet
Doghouse	With fridge, kickspace heating and airco
Saloon	Upper and lower
Headroom saloon (m)	2



FEADSHIP PAVILJOENTJALK

Heating	Kabola Combi KM14-20 independant from airco
Air-conditioning	reverse cycle airco 36000 BTU with fancoils in each area
Navigation center	At helm and below
Chart table	Below with E150 and above with flatscreen TV
Aft Cabin	yes
Dining room	yes
Opening door to cockpit	And access to deck on each side
Galley	U shaped
Countertop	Custom cut
Sink	stainless steel Double
Cooker	electric Miele 2 x 2, Grill plate and built in frying pan
Oven	Miele Combi steam oven
Extractor	Miele
Microwave	Samsung
Microwave/oven combi	Miele grill oven
Fridge	Beko American
Freezer	Vitrifigo and drawer under american fridge plus one in pantry
Hot water system	on central heating And flow-through boilers in galleys
Water pressure system	electrical 2 x independant Hydrophore
Dishwasher	Miele
Kettle	yes
Ice maker	In american fridge
Coffee maker	yes
Crockery	yes
Owners cabin	double bed 2 x Twin
Bed length (m)	2 x 1,60
Wardrobe	hanging/drawers/shelves
Bathroom	en suite
Toilet	en suite
Toilet system	electric
Wash basin	in the bathroom
Shower	en suite



FEADSHIP PAVILJOENTJALK

Extra info	Urinal in owners bathroom
Guest cabin 1	double bed VIP
Bed length (m)	2,00 x 1,70
Wardrobe	hanging/drawers/shelves
Bathroom	en suite
Toilet	en suite
Toilet system	electric
Wash basin	in the bathroom
Shower	en suite
Guest cabin 2	double bed Can be converted into a bunk bed
Wardrobe	hanging and shelves
Bathroom	shared
Toilet	shared
Toilet system	electric
Wash basin	in the bathroom
Shower	shared
Extra info	This cabin can be used as crew cabin or used with double bed
Crew cabin(s)	1
Bathroom (crew)	Shared with guest cabin
Toilet (crew)	Shared with guest cabin
Toilet system	electric
Wash basin	in the bathroom
Shower (crew)	yes
Extra info	Crew Galley with Miele double cooking plate and combi oven
Washing machine/dryer combi	Miele
Extra info	All lightning dimmable
Extra info	Dayhead converted to Pantry. (easily converted back)

MACHINERY

No of engines	2
Make	Perkins Sabre



Type	TI265
HP	204
kW	150
Fuel	diesel
Year installed	2004
Maximum speed (kn)	11
Cruising speed (kn)	7
Engine hours	3926
Engine cooling system	closed keelcooling Dry exhaust
Drive	shaft
Shaft seal	yes
Engine controls	yes
Gearbox	hydraulic ZF 2,476 ratio
Bowthruster	hydraulic 30 hp on engine pto
Sternthruster	hydraulic 20 hp on engine pto
Thrust bearing	yes
Propeller type	fixed
Propeller blades	4
Propeller shaft material	stainless steel
Shaft lubrication	yes
Manual bilge pump	yes
Electric bilge pump	With manifold backup pump and seperate floater pumps in each are
Bilge alarm	For each compartment
Electrical installation	12 & 24 V DC and 240 V 50 Hz AC and 120/240 60 Hz input
Generator	dry exhaust Mitsubishi 20 Kva 2 Phase
Running hours generator	2167
Generator 2	dry exhaust Mitsubishi 20 Kva 2 phase
Running hours generator 2	2118
Batteries	yes
Start battery	2 x 2 Optima red top for 24 Volt, one set for each engine
Service battery	Traction set 1000 A. 24 V 2 Volt Gel Cells



Generator battery	2 x Optima red top one for each generator
Battery monitor	yes
Battery charger	2 x Victron Skylla 24 V 100 Ah
Inverter	2 x Victron Phoenix 5000 W (master and slave)
Diode battery combiners	yes
Shorepower	with cable Bow and stern 120-220 and 400 V. 50 and 60 Hz
Insulation transformer	Shore power converter for 120/240 V 50 - 60 Hz input and 2 x Vic
Watermaker	2 x Schenker
Extra info	Shore power converter for 120/240 V 50 - 60 Hz input 52 Amp.
Extra info	Independant airco in engineroom
Extra info	Double switch over Alpha Laval intake filters

NAVIGATION

Compass	Classic Constellation
Electric compass	Raymarine
Multi control display	Raymarine
Depth sounder	Raymarine
Log	Raymarine
Windset	Raymarine
Repeater	Raymarine Multi 2 x
VHF	2 x raymarine
VHF handheld	2 x
Autopilot	Raymarine with follow up
Rudder angle indicator	Raymarine
Radar	With 120 Raymarine open scanner
GPS	Raymarine and Furuno GP31 backup
Plotter	2 x
Radar/GPS/plotter	2 x Raymarine E150 hybrid touch
PC connection	yes
Wifi antenna	With 4G router



Electronic chart(s)	yes
AIS transceiver	Raymarine
Camera	In the engineroom
Navigation lights	yes
Searchlight	Remote controled
Loudhailer	yes
Extra info	Elaborate monitoring and alarm system with 2 independant monitor

EQUIPMENT

Fixed hardtop	yes
Cockpit cover	yes
Dodger	yes
Window cover	For wooden side panels
Cockpit cushions	yes
Cockpit table	Electric raised convertable to bed
Boarding ladder	stainless steel
Gangway	Electric lowered side gangway and Hydraulic passarelle aft
Deck shower	yes
Anchor	Danforth
Anchor chain	15 mm
Anchor 2	Danforth
Anchor chain	15 mm
Other ground tackle	Devils claws for each chain
Windlass	hydraulic Ideal H7M 4000 lbs capstan with 2 chain winches and rope on tope
Capstan	Integrated in windlass
Windlass aft	manual Lewmar 50 2 speed self tailing
Deck wash	yes
Deck crane	hydraulic CT1500 Steelmaster
Sea railing	yes
Grab rail (superstructure)	yes



Railing side opening gates	yes
Lifejackets	yes
Lifebuoy	yes
Danbuoy	yes
Wiper	3 x with synchro switch and flush
Horn	yes
Fenders	Inflatable
Mooring lines	yes
Spare parts	yes
Tools	yes
Alarm system	Ship monitoring system with two displays
TV	In each cabin total 7
TracVision ball	2 x Tracvision of each TV
Radio	Fusion with CD/DVD in each cabin
DVD player	yes
iPod connection	yes
Surround Sound System	In Salon and Master
Sub-woofer	In Salon and Master
Cockpit speakers	yes
Speakers in salon	yes
Speakers in cabin	Separate Fusion stereo in each cabin
Clock - barometer	Wempe set and seperate digital
Fire extinguisher	In each cabin
Auto extinguisher system	Fire Pro
Extra info	yes

RIGGING

Rigging	gaff-rig
Standing rigging	wire
Material mast	wood
Mast lowering system	Hydraulic partial



Mainsail	With Gaff 2017, washed 2021
Mainsail cover	yes
Jib	2017 washed 2021
Genoa furler	Furlex 400s
Staysail furler	Profurl
Yankee	2017 washed 2021
Primary sheet winch	2 x Lewmar 44 Electric self tailing
Secondary sheet winch	Lewmar 50 2 speed self tailing
Genoa sheetwinches	2 x Lewmar 44 2 speed self tailing
Winchcovers	yes
Extra info	6 spinlock stopper
Extra info	All of the sails are in the winterstorage and cleaned professionally. When the auction is closed the sails are in Harlingen to be picked up by the buyer.





BROKERAGE | CHARTER | BERTHS | FINANCE | INSURANCE | YACHT MANAGEMENT



**This yacht will be auctioned,
for further details please visit www.devalk.nl**

**Dit schip zal worden geveild,
voor meer informatie gaat u naar www.devalk.nl**

**Dieses Schiff wird versteigert,
für weitere informationen besuchen Sie www.devalk.nl**

WWW.DEVALK.NL



DE VALK
YACHT BROKERS

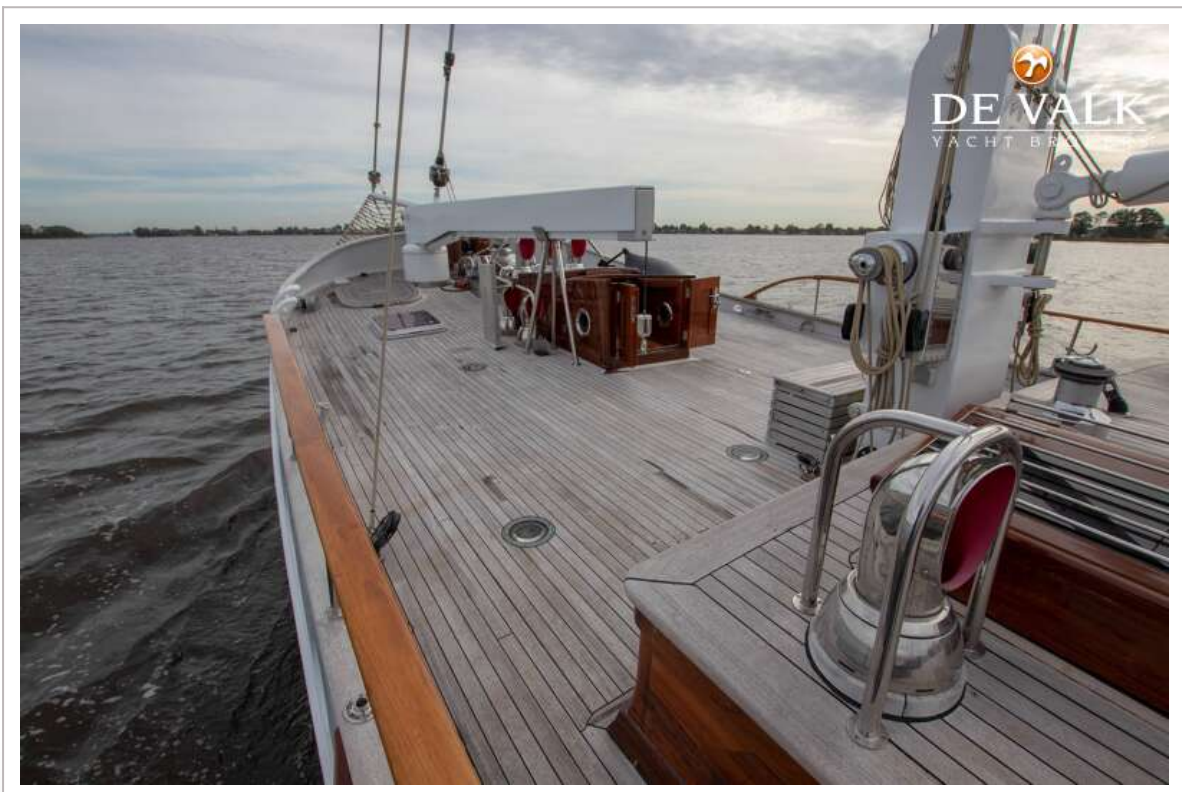




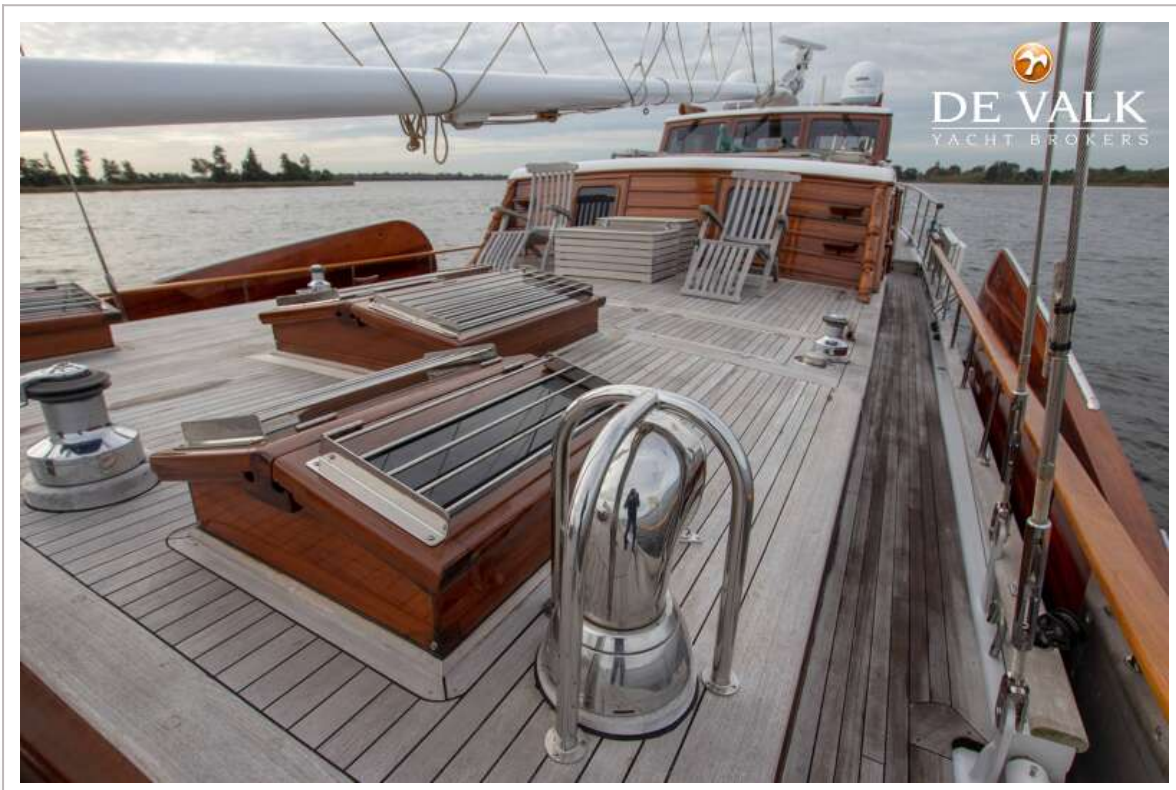




FEADSHIP PAVILJOENTJALK



FEADSHIP PAVILJOENTJALK



FEADSHIP PAVILJOENTJALK



FEADSHIP PAVILJOENTJALK



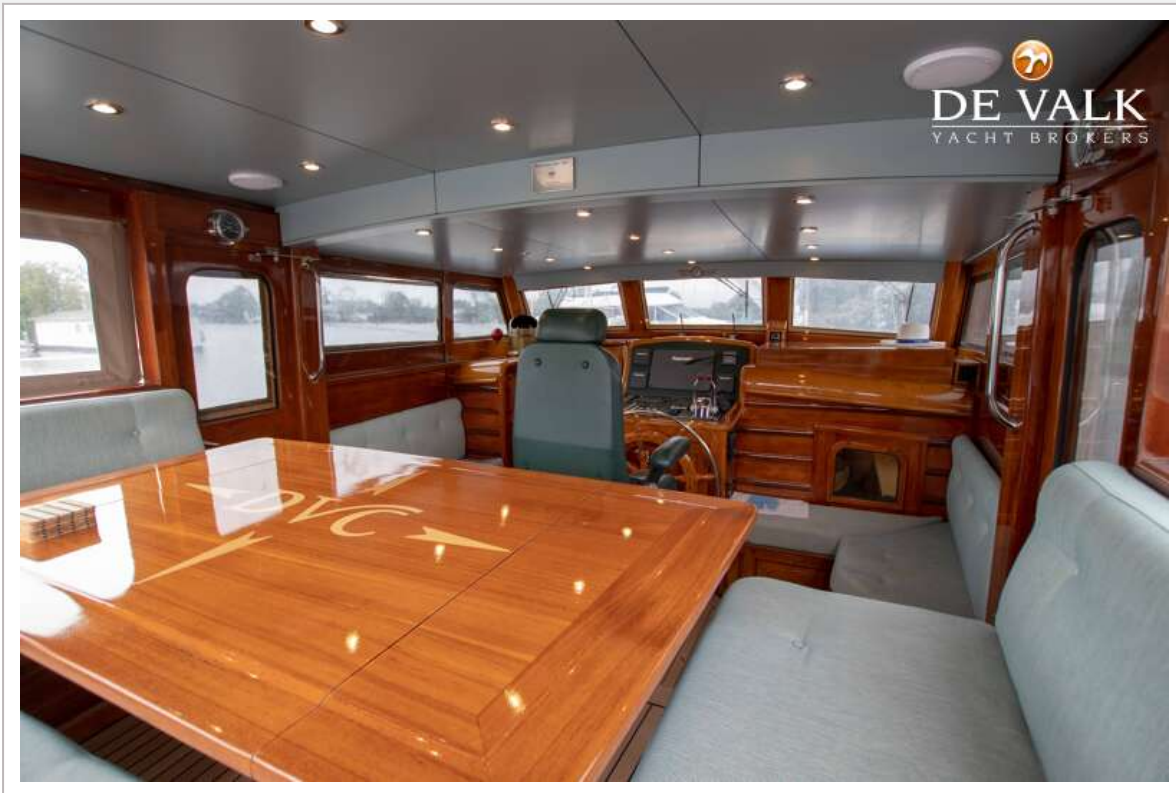
FEADSHIP PAVILJOENTJALK



FEADSHIP PAVILJOENTJALK



FEADSHIP PAVILJOENTJALK



FEADSHIP PAVILJOENTJALK



FEADSHIP PAVILJOENTJALK



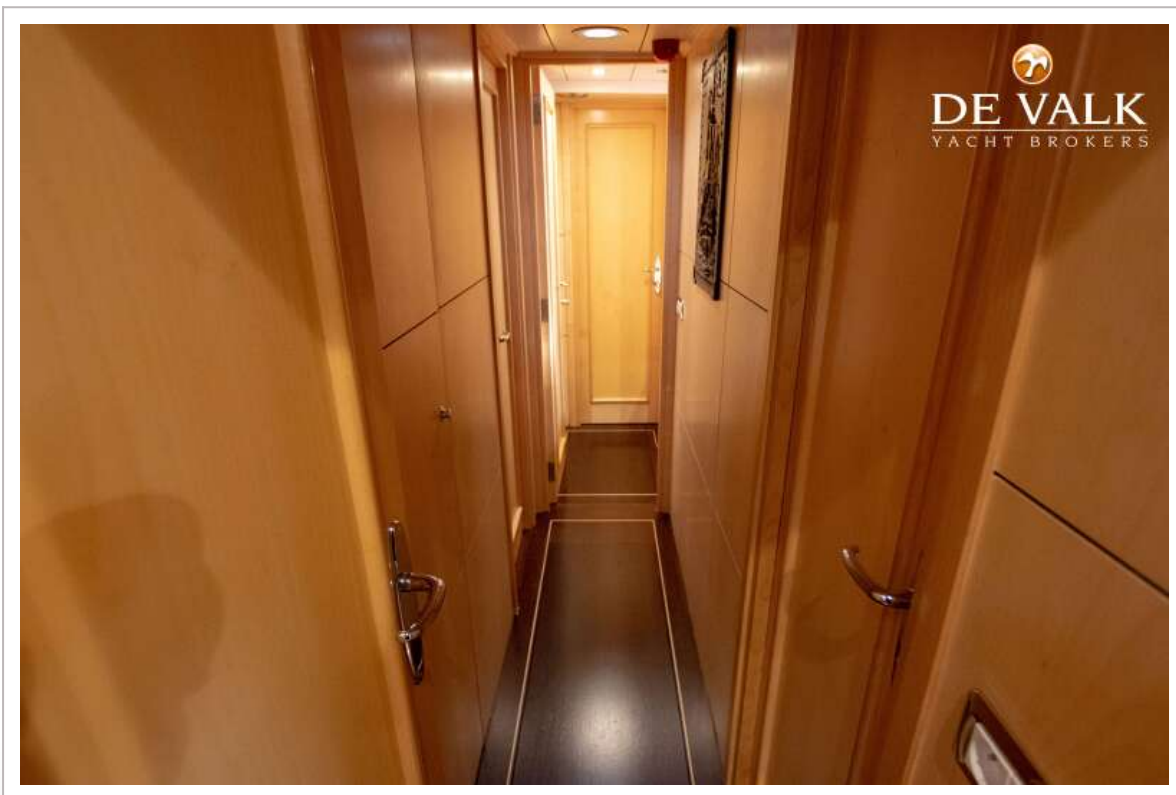
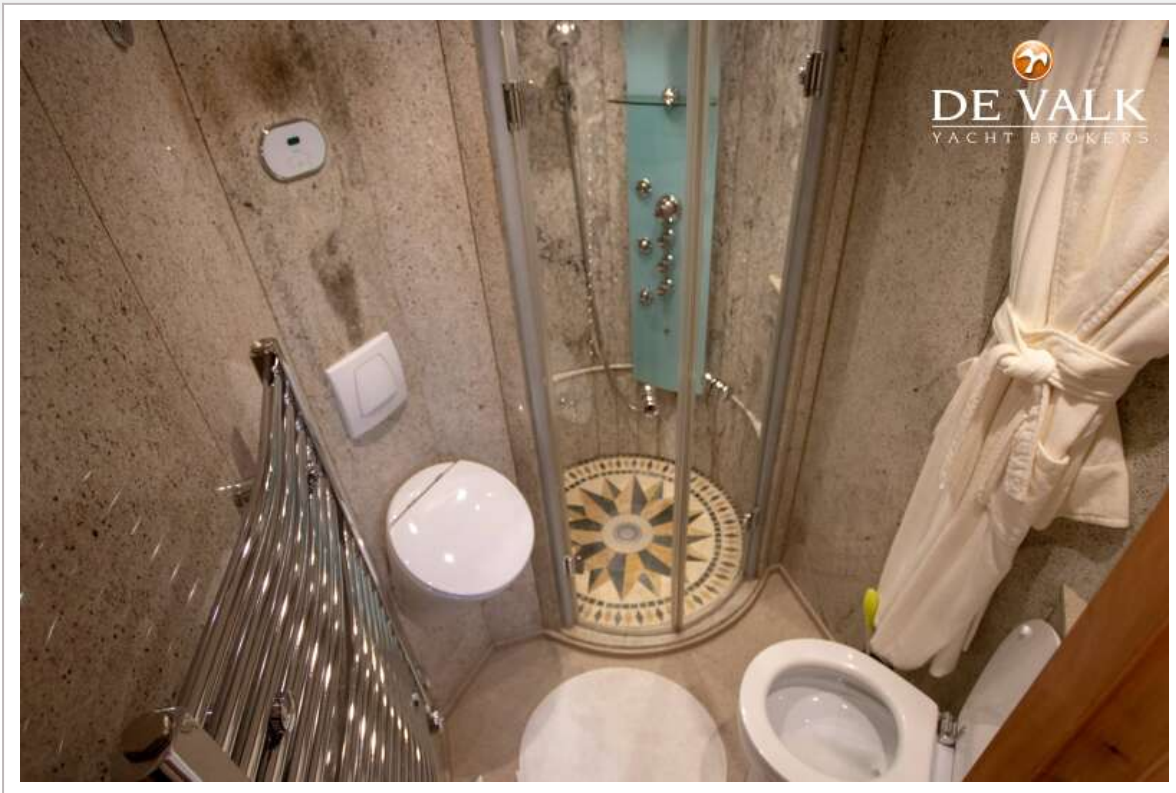
FEADSHIP PAVILJOENTJALK



FEADSHIP PAVILJOENTJALK



FEADSHIP PAVILJOENTJALK



FEADSHIP PAVILJOENTJALK

