



GLOBEMASTER 50

BROKER'S COMMENTS

This unique Globemaster 50 is the perfect boat for long voyages or for living aboard. With her clever layout designed by Dutch designer Willem Nieland, every space is used to the maximum. Thanks to a well-insulated hull, double glazing, central heating, airco, and a wood-burning stove, it is pleasant to stay on board. There are two spacious cabins, each with its own en suite bathroom and entrance. In addition, she is self-sufficient thanks to two solar panels. Are you looking for a ship for the voyage of your dreams or to live on the water? Then get in contact with us.

Julian de Heer

SPECIFICATIONS

Dimensions	15.30 x 4.95 x 1.20 (m)	Builder	Globemaster Yachts
Built	2022	Cabins	2
Material	Aluminium	Berths	4
Engine(s)	2 x Volvo Penta D4-300I-G diesel	Hp/Kw	2 x 300.00 (hp), 220.80 (kw)
Asking price	Under Offer (VAT Paid)	Lying	at sales office

CONTACT

Sales office	De Valk Loosdrecht	Telephone	+31 35 582 90 30
Address	't Breukeleveense Meentje 6 1231 LM Loosdrecht / Wijdmeren The Netherlands	E-mail	loosdrecht@devalk.nl

DISCLAIMER

These particulars are given in good faith as supplied but cannot be guaranteed.



GENERAL

Model	GLOBEMASTER 50
Type	motor yacht
LOA (m)	15,30
Beam (m)	4,95
Draft (m)	1,20
Air draft min (m)	3,50
Year built	2022
Launched	2022
Builder	Globemaster Yachts
Country	The Netherlands
Designer	Willem Nieland
Displacement (t)	24
CE norm	A
Hull material	aluminium
Hull thickness (mm)	7
Superstructure material	aluminium
Superstructure (mm)	7
Rubbing strake	Hakorit
Deck material	aluminium
Antifouling (year)	2023 Trilux 33
Window frame	aluminium
Window material	double glazing
Deckhatch	yes
Portholes	aluminium Double glazing
Insulation	foam Pur 6cm
Flybridge	yes
Radar arch	yes
Mast can be lowered	manual
Fuel tank (litre)	aluminium 1200
Fuel tank 2 (litre)	aluminium 1200



Level indicator (fuel tank)	yes
Freshwater tank (litre)	1000 aluminium, 450 HDPE
Level indicator (freshwater)	yes
Blackwater tank (litre)	550 HDPE
Level indicator (blackwater)	yes
Wheel steering	hydraulic
Inside helm position	yes
Outside helm position	cable steering

ACCOMMODATION

Cabins	2
Berths	4
Interior	walnut
Floor	wood
Pilot house	With opening side door
Saloon	yes
Headroom saloon (m)	2,30+/-
Sliding roof	manual Collapsible
Heating	central heating Kabola
Heating 2	Wood stove
Air-conditioning	single cycle airco Frygomar 27000BTU
Navigation center	yes
Opening door to cockpit	yes
Galley	yes
Countertop	corian
Sink	yes
Cooker	induction Pelgrim
Oven	Siemens
Extractor	Miele
Fridge	Liebherr
Freezer	Liebherr in fridge



Hot water system	220V + engine Boiler 2x 50 liter
Water pressure system	electrical
Dishwasher	Siemens
Owners cabin	double bed
Bed length (m)	200 x 160 cm
Wardrobe	hanging and shelves
Bathroom	en suite
Toilet	en suite Vetus
Toilet system	electric
Wash basin	in the bathroom
Shower	en suite
Guest cabin 1	double bed
Bed length (m)	200 x 160 cm
Wardrobe	shelves
Bathroom	en suite
Toilet	en suite Vetus
Toilet system	electric
Wash basin	in the bathroom
Shower	en suite
Washing machine/dryer combi	Beko
Extra info	utilityroom with extra storage space and wash/dryer combination.

MACHINERY

No of engines	2
Make	Volvo Penta
Type	D4-300I-G
HP	300
kW	220.80
Fuel	diesel
Maximum speed (kn)	19,5



Cruising speed (kn)	8,5
Consumption (l/hr)	6
Engine hours	698
Engine cooling system	freshwater heat exchanger
Drive	shaft
Engine controls	electrical
Gearbox	hydraulic
Engine controls	electrical
Bowthruster	electric Maxpower CT124 proportional
Gearbox	hydraulic
Exhaust	watercooled
Propeller type	fixed
Propeller blades	4
Propeller shaft material	stainless steel
Shaft lubrication	water
Electric bilge pump	2x per watertight compartment
Bilge alarm	yes
Batteries	yes
Start battery	4x
Service battery	12x AGM 220Ah
Bowthruster battery	2x
Battery monitor	Mastervolt easy view 5
Battery charger	Mastervolt 24-110
Inverter	2x Mastervolt 24-4000
Solar panel	2x 450 Watt
Shorepower	with cable
Trimtabs	Zipwake 1000mm

NAVIGATION

Electric compass	yes
Multi control display	Simrad IS42



Depth sounder/log	Simrad
Windset	yes
VHF	AIS TX/RX RS100
Autopilot	Simrad NAC-3
Rudder angle indicator	Simrad RF300
Radar	Halo 24
GPS	Antenne GS25
Plotter	2x Simrad NSO evoS3 MPU
Wifi antenna	NMEA 2000
AIS transceiver	yes
Camera	Van Zwitserland
Navigation lights	yes
Searchlight	yes

EQUIPMENT

Fixed windscreen	yes
Bimini	yes
Window cover	yes
Bathing platform	yes
Boarding ladder	stainless steel
Deck shower	Hot and cold water
Anchor	Rocna 40kg
Anchor chain	50 meter chain and 50 meter rope
Anchor 2	Fortress 25kg stern anchor with rope 40 meter
Anchor chain	yes
Windlass	electrical Maxwell
Deck wash	yes
Dinghy	rigid hull Highfield 380 CL aluminium optional
Outboard	20HP Yamaha 4 stroke optional
Davits	aluminum
Davits controls	manual



Sea railing	aluminum
Grab rail (superstructure)	aluminium
Wiper	3x wiper washer installation
Window ventilator	yes
Horn	air pressure
Fenders	yes
Mooring lines	yes
TV	2x Samsung The Frame
Extinguisher in engine room	yes



GLOBEMASTER 50



GLOBEMASTER 50

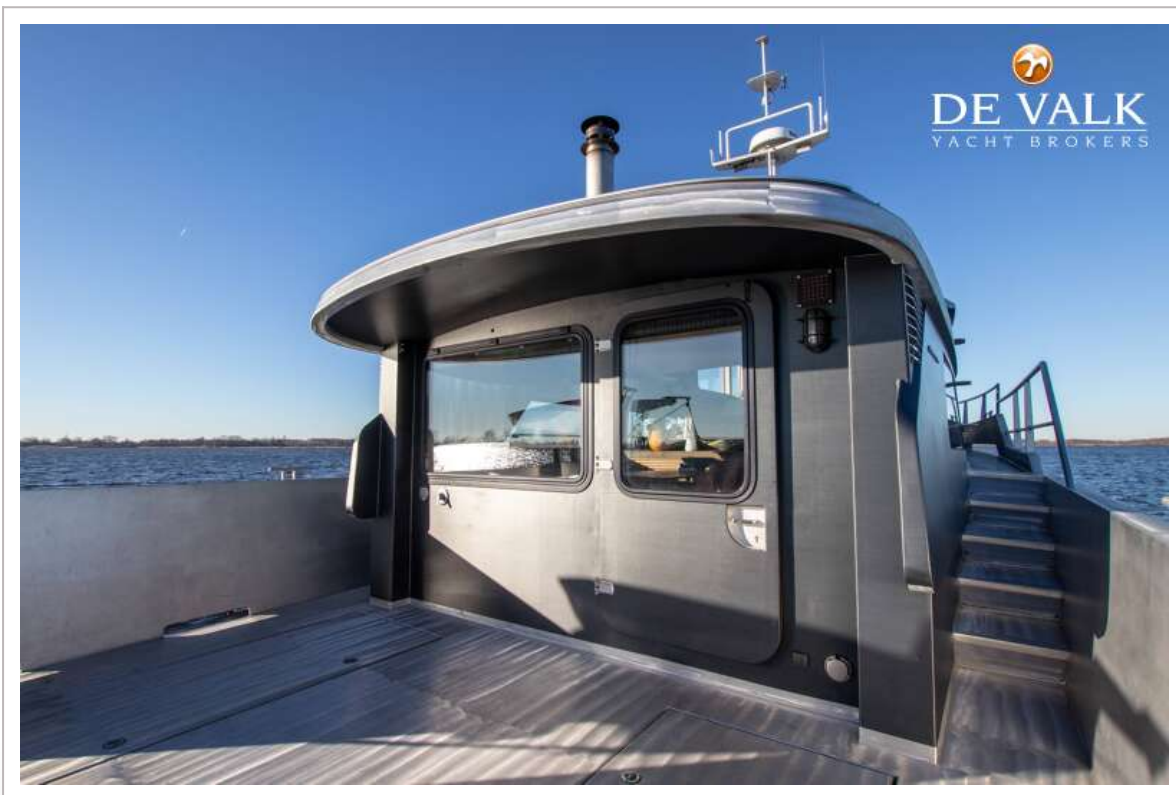
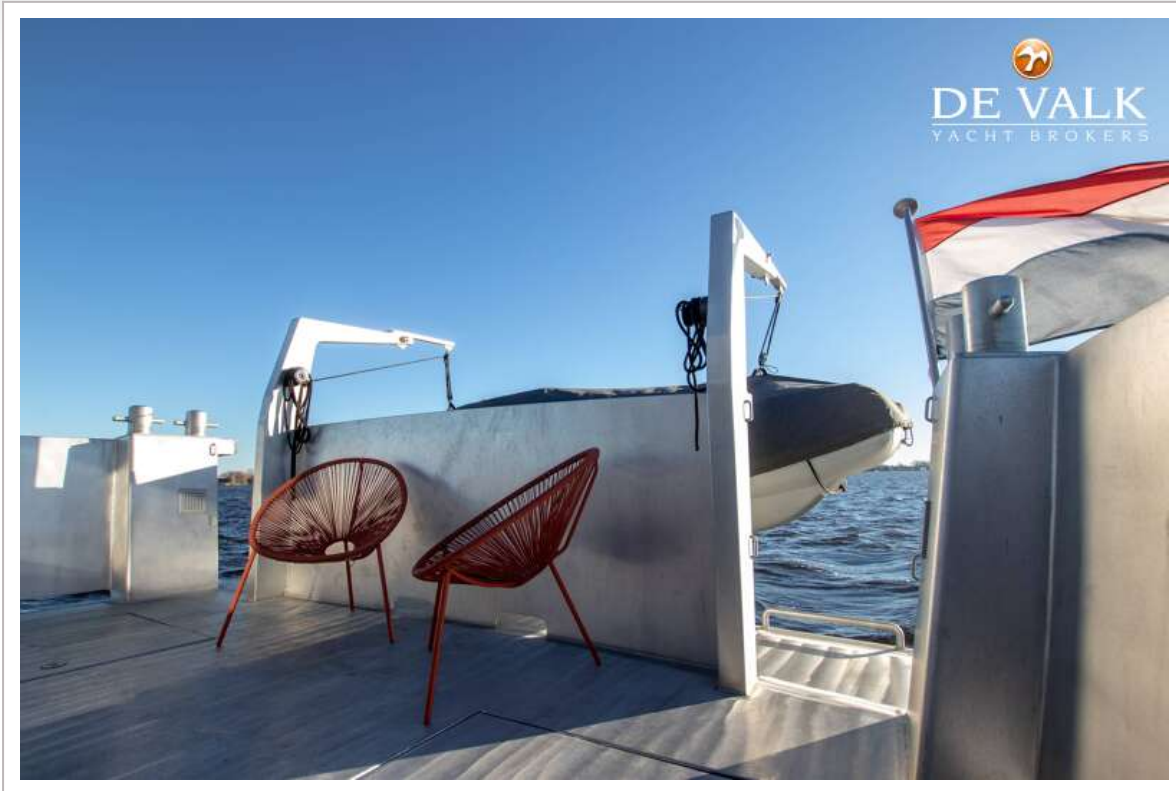


GLOBEMASTER 50



GLOBEMASTER 50

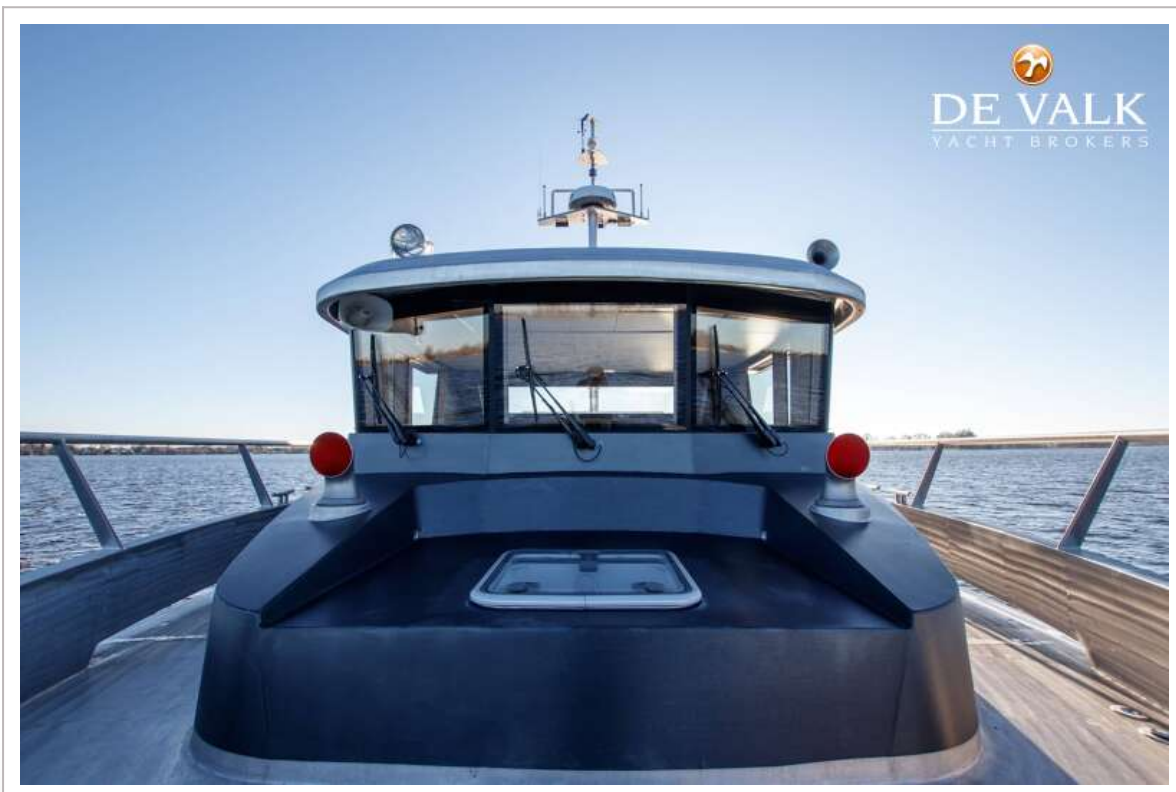




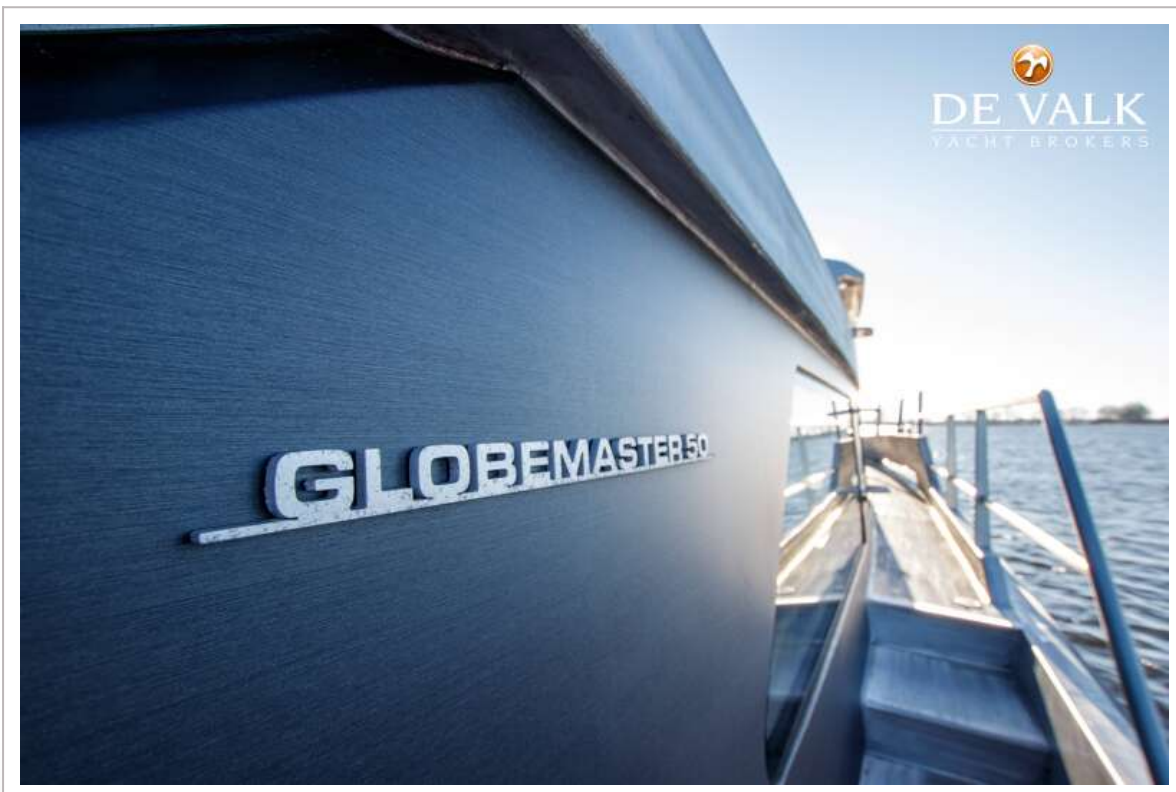
GLOMASTER 50



GLOBEMASTER 50



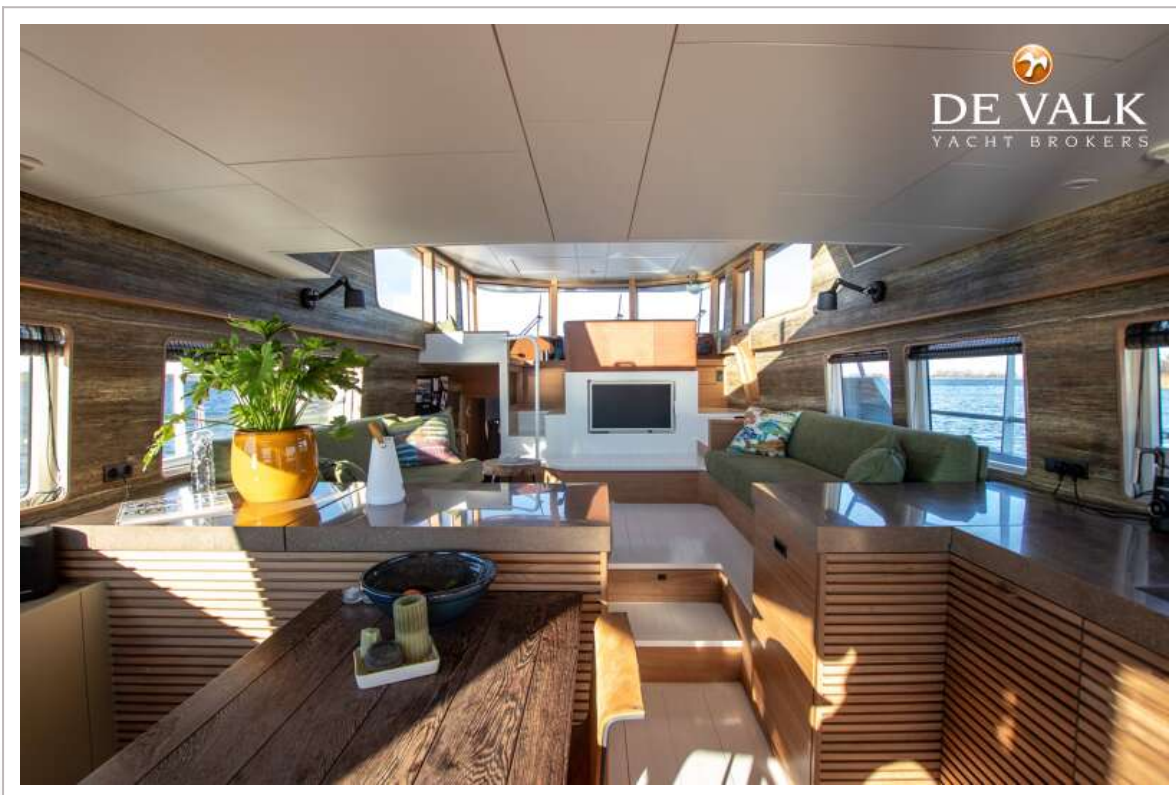
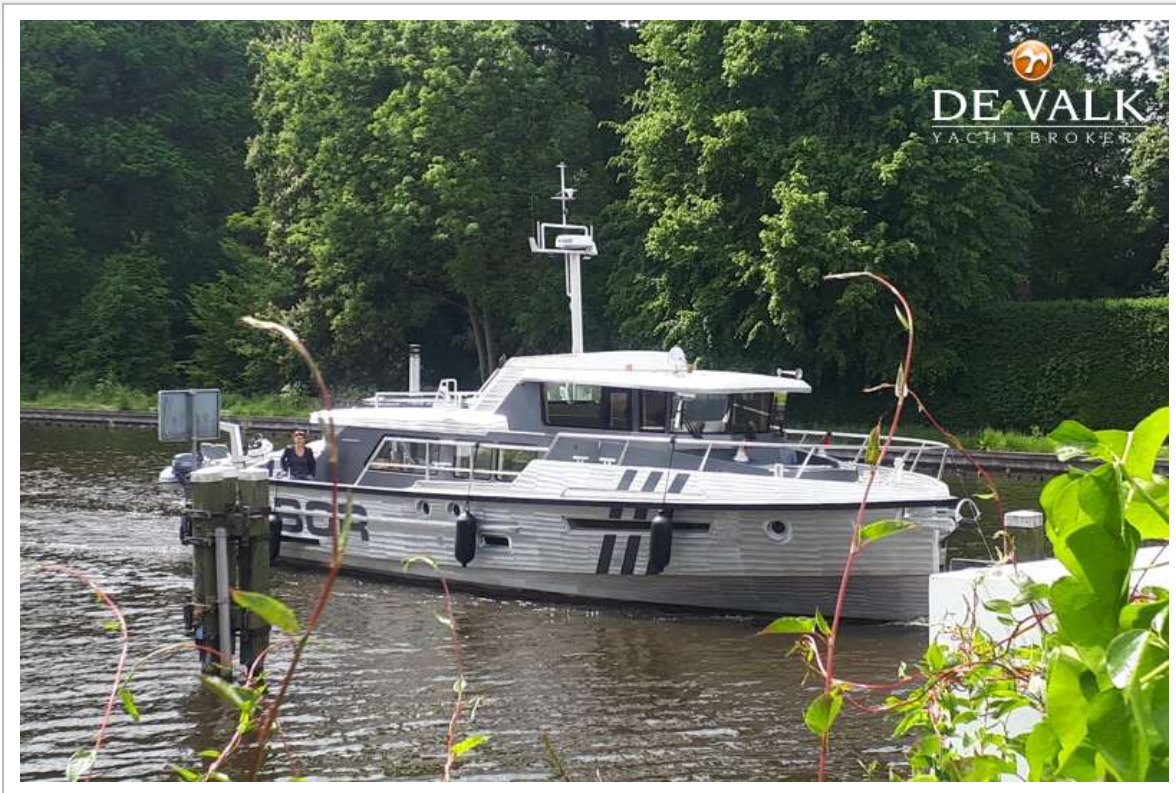
GLOBEMASTER 50



GLOBEMASTER 50



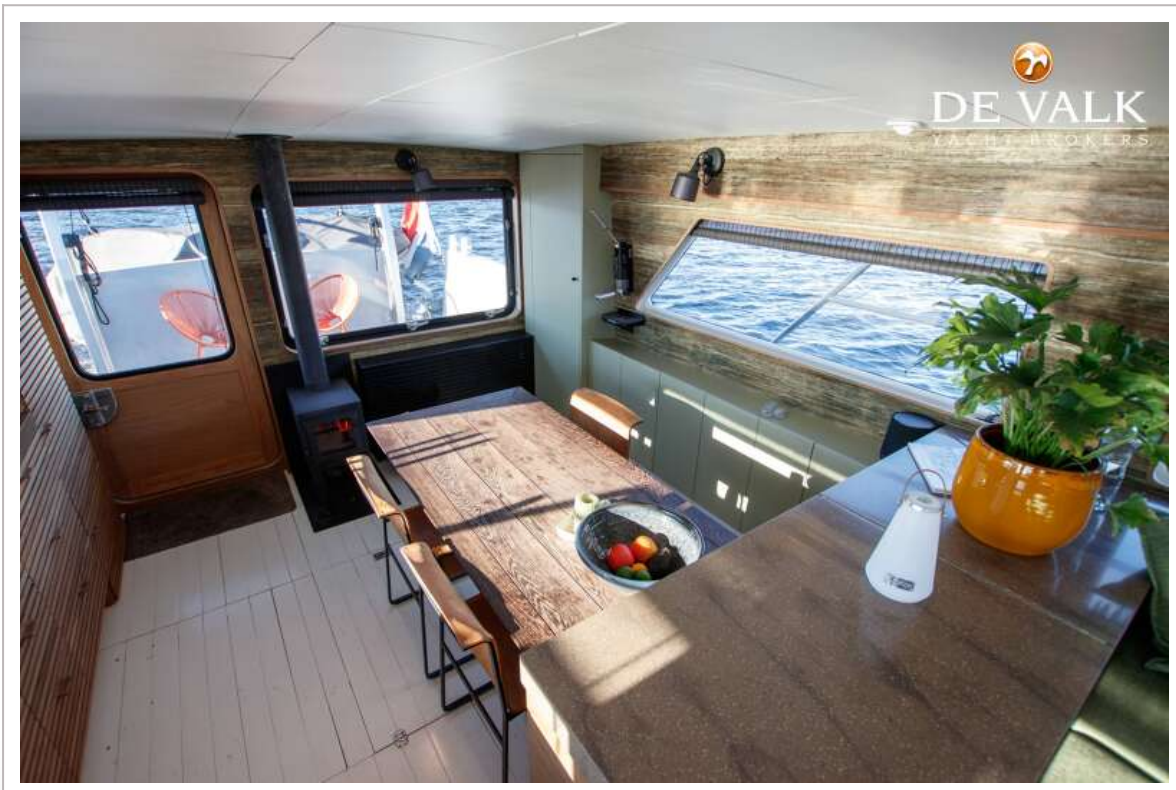
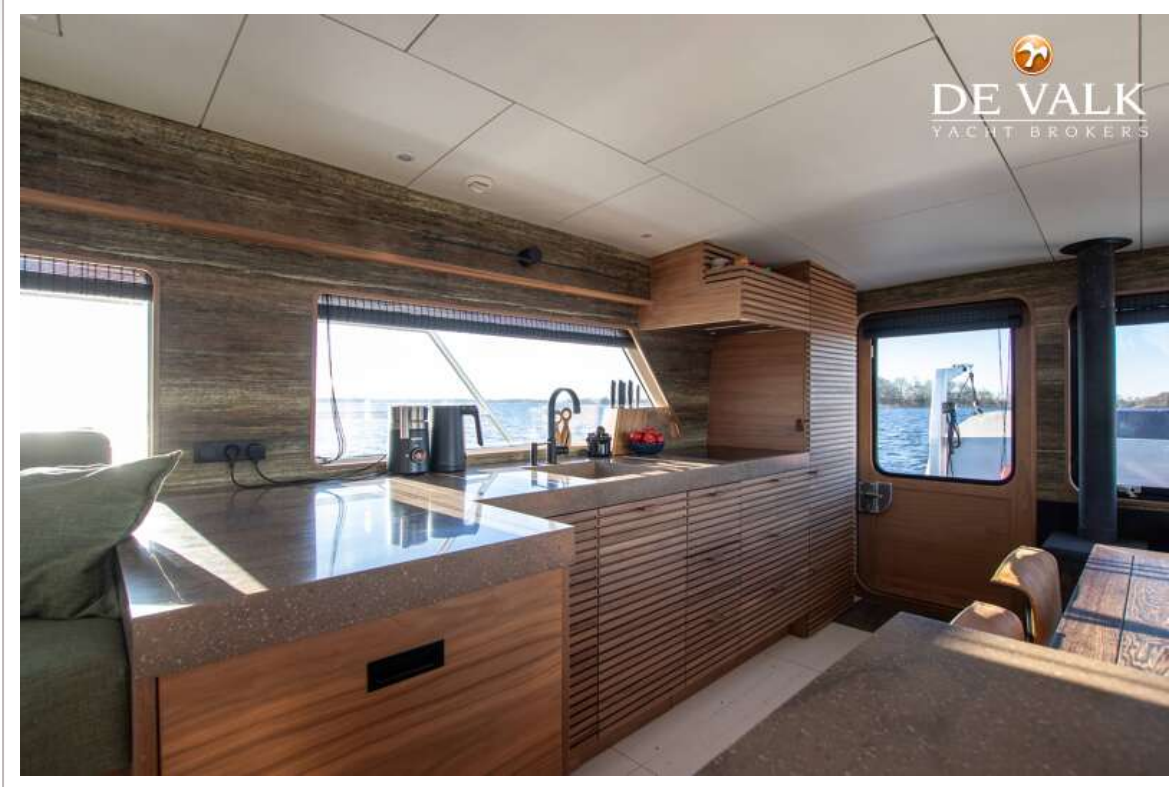
GLOBEMASTER 50



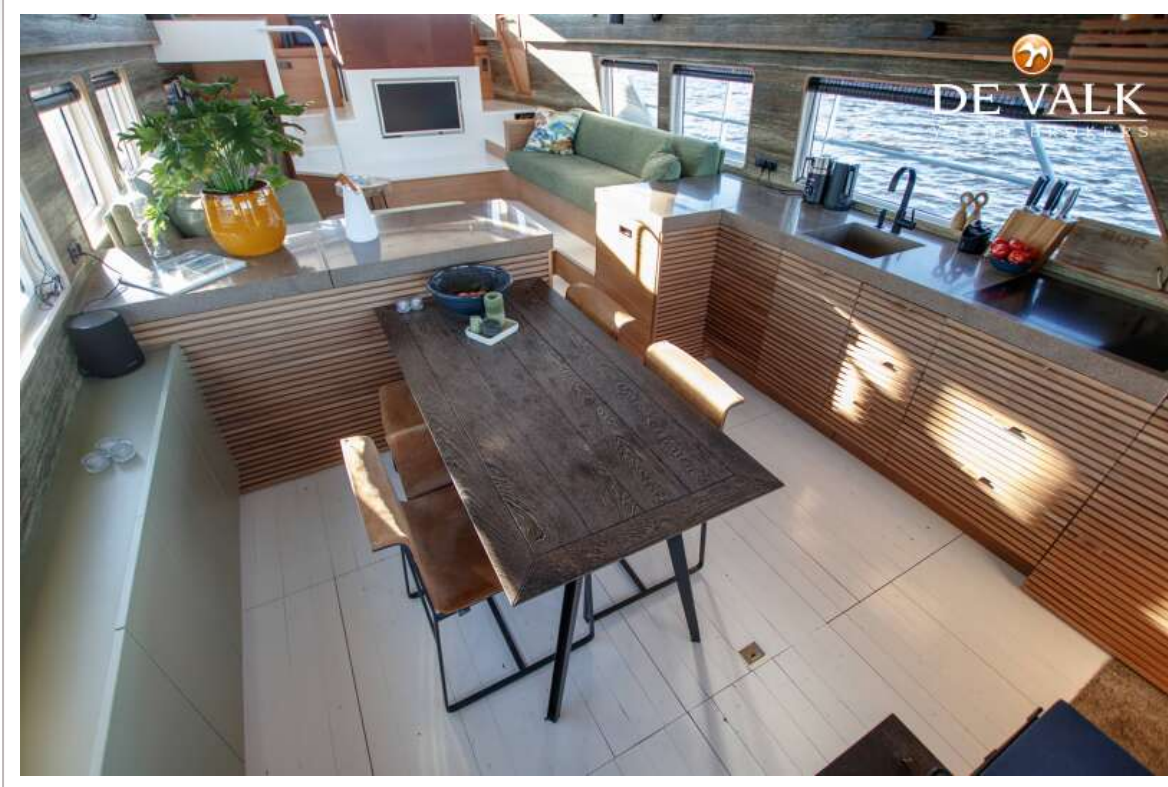
GLOBEMASTER 50

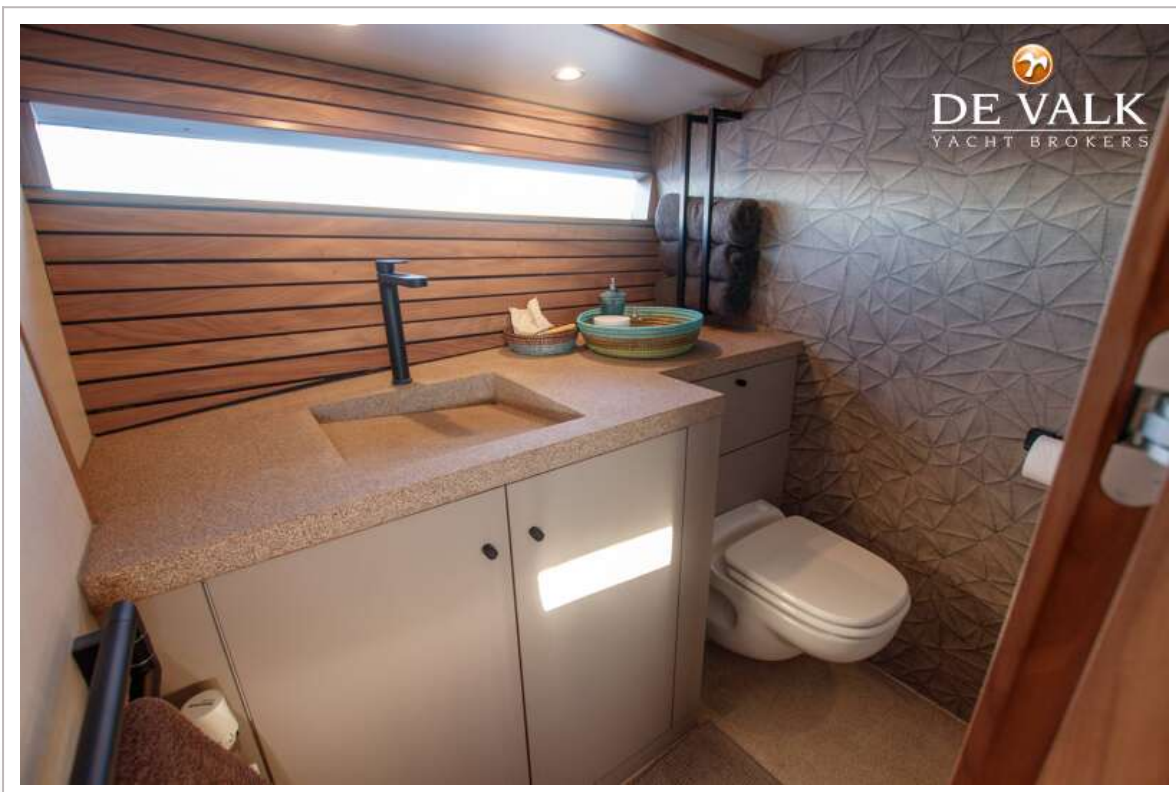
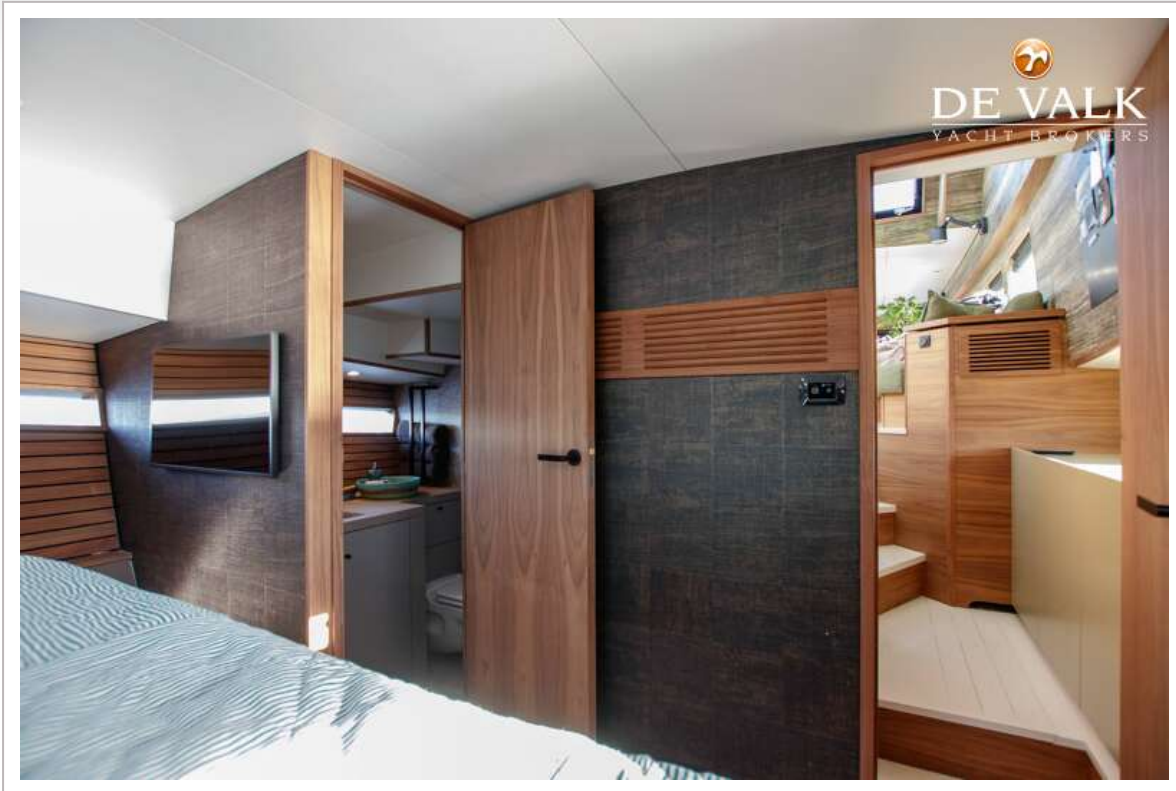


GLOBEMASTER 50

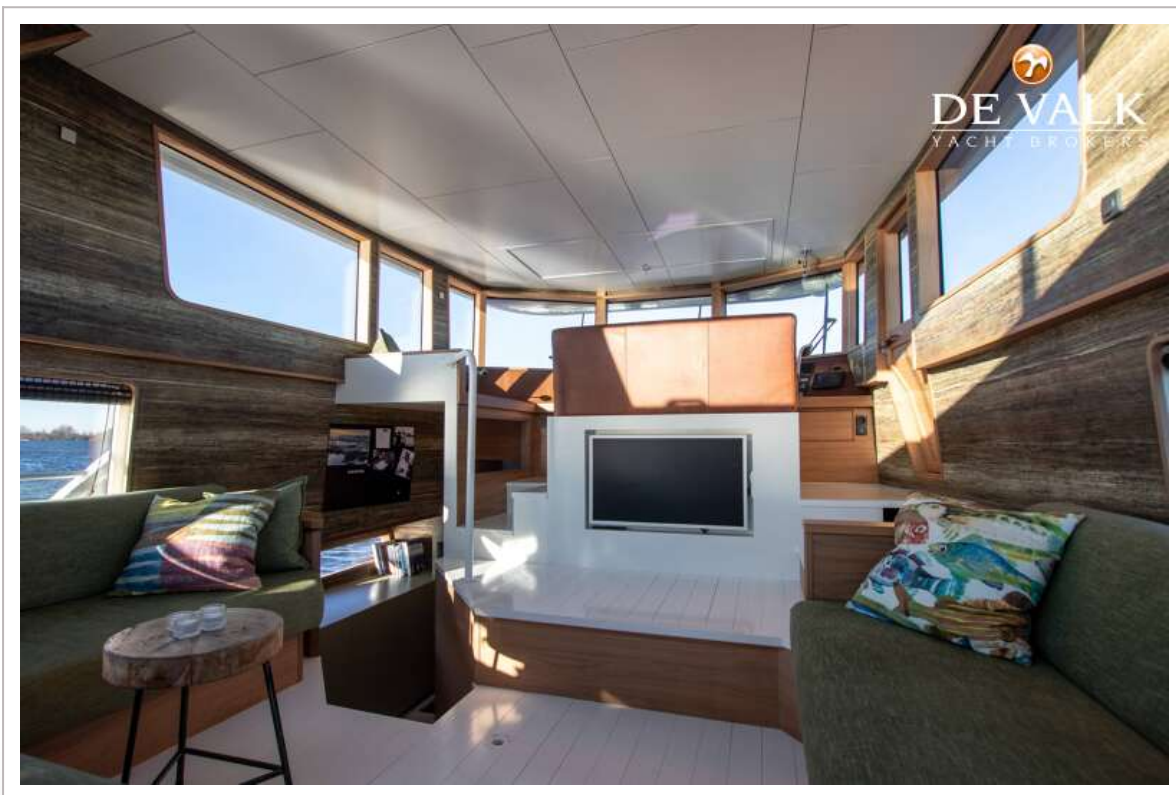
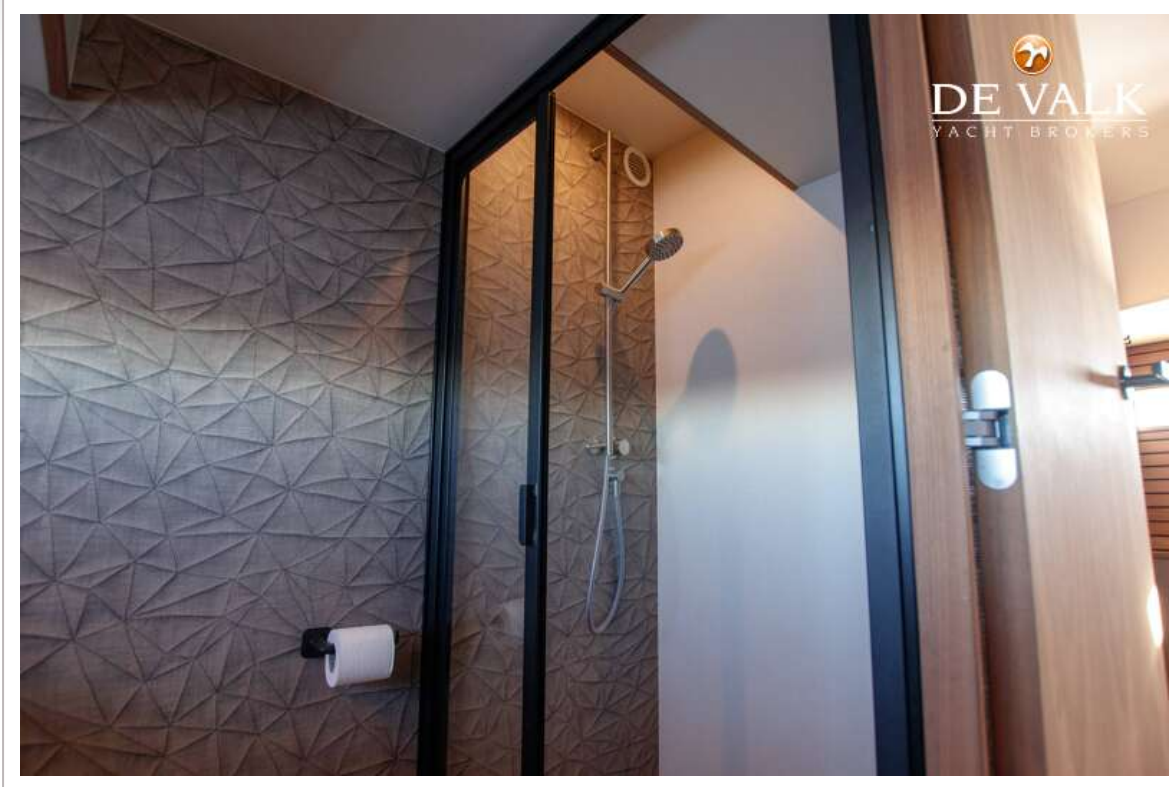


GLOBEMASTER 50

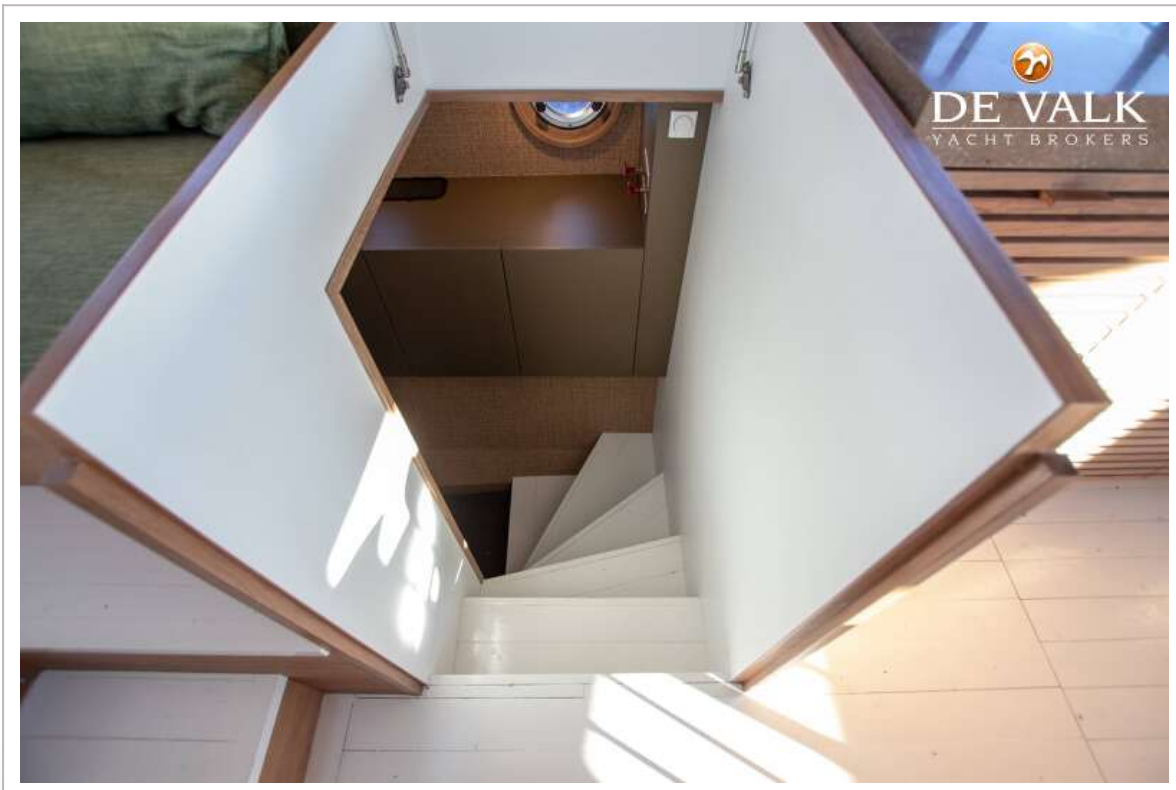


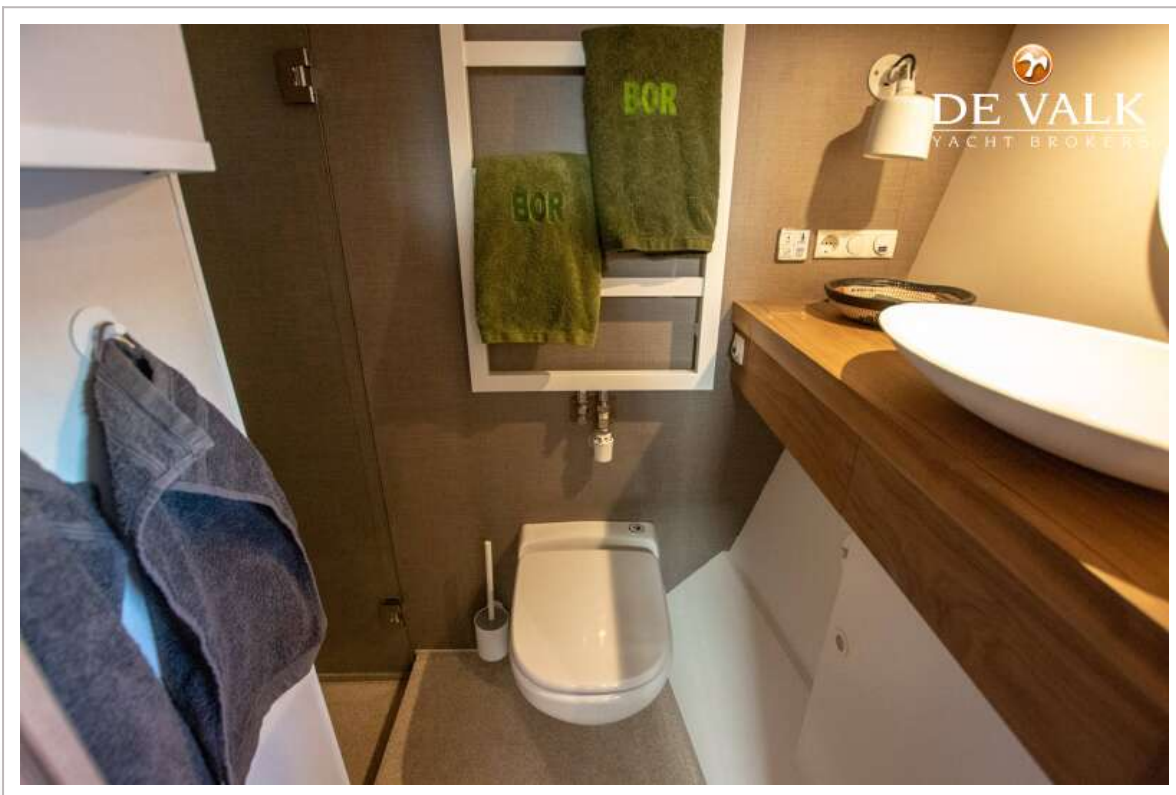


GLOBEMASTER 50

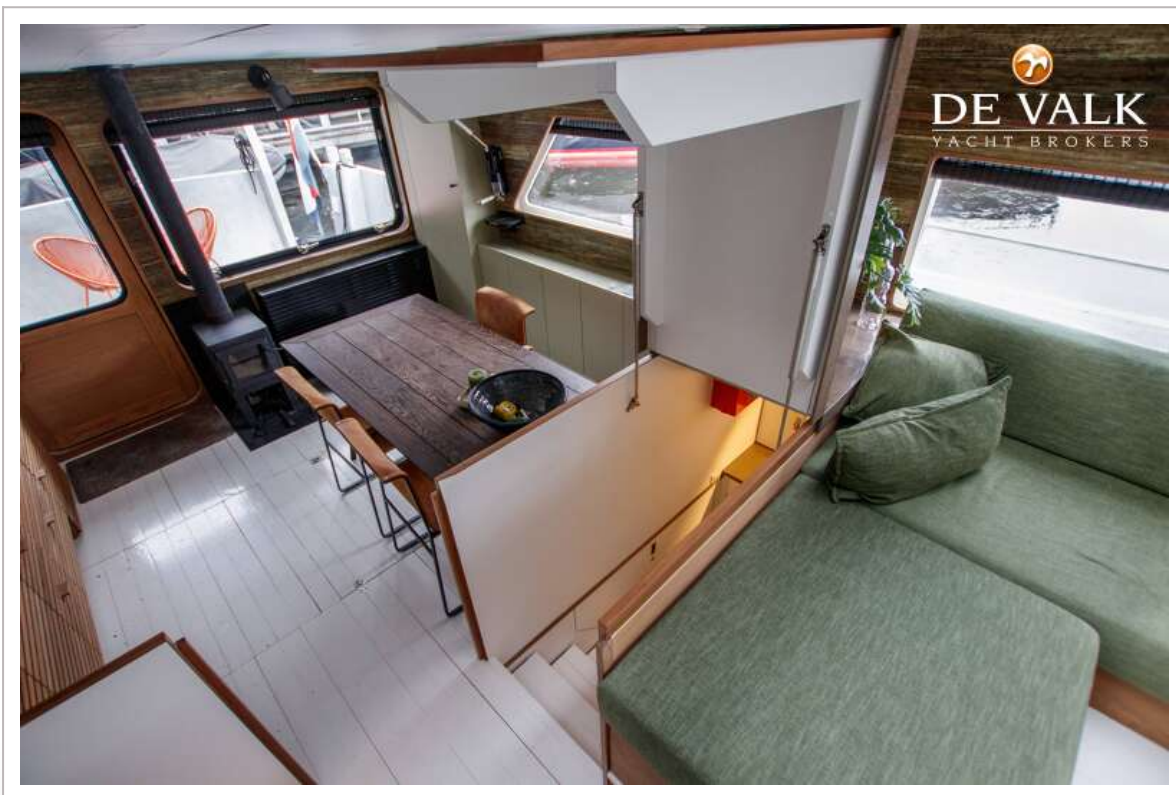


GLOBEMASTER 50





GLOBEMASTER 50



GLOBEMASTER 50



GLOBEMASTER 50



GLOBEMASTER 50

