



DE VALK
YACHT BROKERS



RODMAN 1040 ADVANCED



DE VALK
YACHT BROKERS

RODMAN 1040 ADVANCED

BROKER'S COMMENTS

Nicely maintained Rodman 1040 Advanced named "Malibu" from the first owner. The Rodman is known for seaworthiness and safety even during less good weather. This Rodman 1040 is the ideal compromise between a comfortable motor yacht for longer vacations with the family and a sport fishing yacht. The "Malibu" is equipped with two powerful and modern Volvo Penta D4 engines, electronic throttles, Webasto hot air heating, etc..

Jochem Heijermans

SPECIFICATIONS

Dimensions	10.40 x 3.80 x 0.90 (m)	Builder	Rodman Yachts
Built	2007	Cabins	2
Material	GRP	Berths	
Engine(s)	2 x Volvo Penta D4 diesel	Hp/Kw	2 x 260.00 (hp), 191.10 (kw)
Asking price	€ 99.500 (VAT Not paid)	Lying	elsewhere / not at sales office

CONTACT

Sales office	De Valk Belgium	Telephone	+3258680218
Address	1401 PT Nieuwpoort Belgium	E-mail	belgium@devalk.nl

DISCLAIMER

These particulars are given in good faith as supplied but cannot be guaranteed.



RODMAN 1040 ADVANCED

GENERAL

Model	RODMAN 1040 ADVANCED
Type	motor yacht
LOA (m)	10,40
Beam (m)	3,80
Draft (m)	0,90
Headroom (m)	2,00
Year built	2007
Builder	Rodman Yachts
Country	Spain
Displacement (t)	10
CE norm	B
Hull material	GRP
Hull colour	off-white
Hull shape	deep-V
Superstructure material	GRP
Rubbing strake	rubber
Deck material	GRP
Deck finish	non-skid moulded in
Superstructure deck finish	non-skid moulded in
Cockpit deck finish	non-skid moulded in
Antifouling (year)	2020
Window frame	aluminium
Window material	tempered glass
Deckhatch	yes
Portholes	aluminium
Flybridge	yes
Flybridge cover	yes
Radar arch	non collapsible
Fuel tank (litre)	aluminium 710
Level indicator (fuel tank)	yes



RODMAN 1040 ADVANCED

Freshwater tank (litre)	aluminium 250
Level indicator (freshwater)	yes
Wheel steering	hydraulic
Inside helm position	yes
Flybridge helm position	hydraulic
Extra info	175l Livewell bait tank

ACCOMMODATION

Cabins	2
Floor	carpet
Open cockpit	yes
Saloon	yes
Headroom saloon (m)	2
Heating	diesel ducted hot air Webasto Air Top Evo 3900
Dinette to convert into berth	yes
Sliding door to cockpit	yes
Galley	yes
Countertop	corian
Sink	stainless steel
Cooker	calor gas Not conected
Microwave	Samsung
Fridge	yes
Freezer	yes
Hot water system	220V + engine
Water pressure system	electrical
Owners cabin	French bed
Bed length (m)	2.00 x 1.30
Wardrobe	hanging and drawers
Bathroom	shared
Toilet	shared
Toilet system	electric



RODMAN 1040 ADVANCED

Wash basin	in the bathroom
Shower	shared
Guest cabin 1	twin single
Bed length (m)	2x 2.00 x 0.80
Wardrobe	shelves

MACHINERY

No of engines	2
Make	Volvo Penta
Type	D4
HP	260
kW	191.10
Fuel	diesel
Maximum speed (kn)	26
Cruising speed (kn)	20
Engine hours	2100
Drive	shaft
Engine controls	electrical Volvo Penta
Gearbox	hydraulic
Exhaust	watercooled
Thrust bearing	yes
Propeller type	fixed
Propeller blades	4
Propeller shaft material	stainless steel
Shaft lubrication	water
Manual bilge pump	1x
Electric bilge pump	3x
Electrical installation	12V/220V
Start battery	2x 12V/185Ah (2019)
Battery charger	Heavy Duty
Shorepower	with cable



Trimtabs

Lenco

NAVIGATION

Compass

yes

Compass on flybridge

yes

Electric compass

Raymarine Smartpilot ST6002

Forw. looking depth sounder

Raymarine C80

Repeater

Raymarine Smartpilot ST6002 flybridge

Fish finder

Raymarine C80

Autopilot

Raymarine Smartpilot ST6002

Rudder angle indicator

Raymarine Smartpilot ST6002

Radar

yes

Radar/GPS/plotter

Raymarine C80

Navigation lights

yes

Searchlight

yes

EQUIPMENT

Fixed windscreen

yes

Window cover

yes

Bathing platform

yes

Transom door

yes

Deck shower

yes

Anchor

Rocna

Windlass

Maxwell

Capstan

yes

Deck wash

Jabsco

Sea railing

stainless steel

Grab rail (superstructure)

Lifejackets

yes

Wiper

+ windshield washers

Horn

electric



RODMAN 1040 ADVANCED

Fenders	yes
Mooring lines	yes
TV receiver	yes
Radio-cd player	Pioneer
Speakers in salon	yes
Fire extinguisher	yes



RODMAN 1040 ADVANCED



RODMAN 1040 ADVANCED



RODMAN 1040 ADVANCED



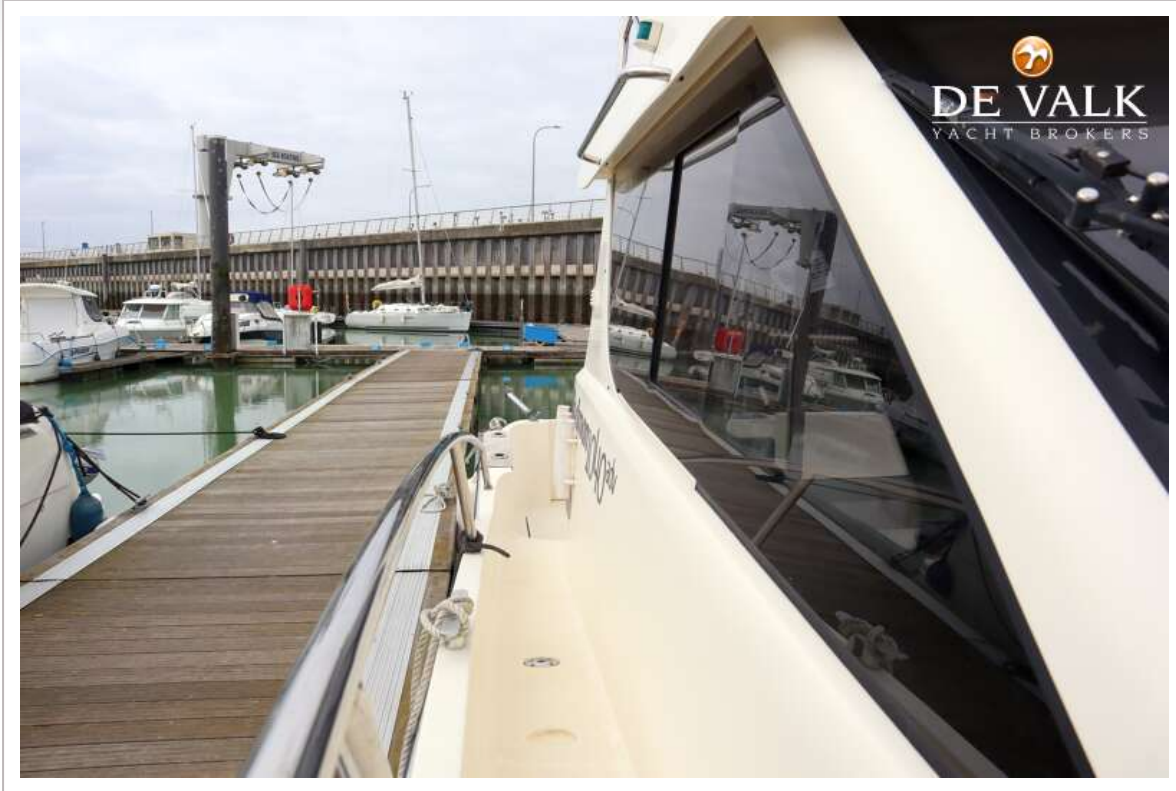
RODMAN 1040 ADVANCED



RODMAN 1040 ADVANCED



RODMAN 1040 ADVANCED



RODMAN 1040 ADVANCED



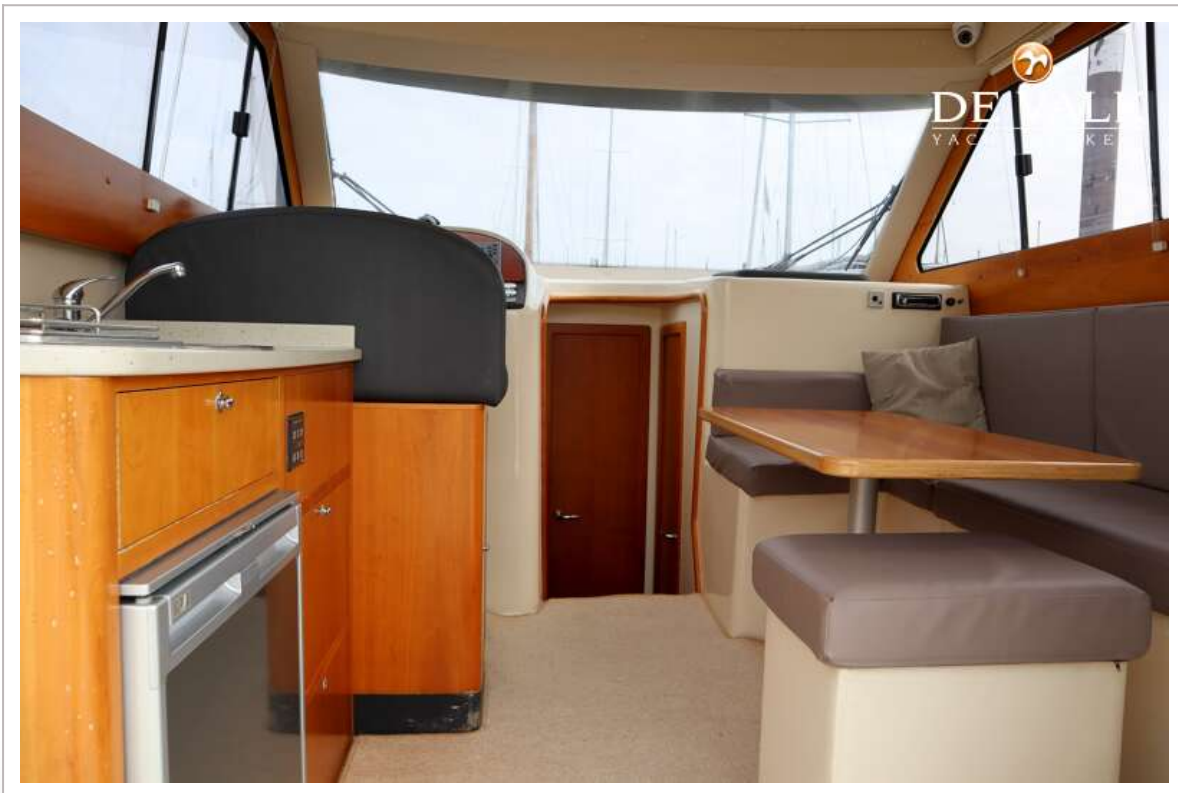
RODMAN 1040 ADVANCED



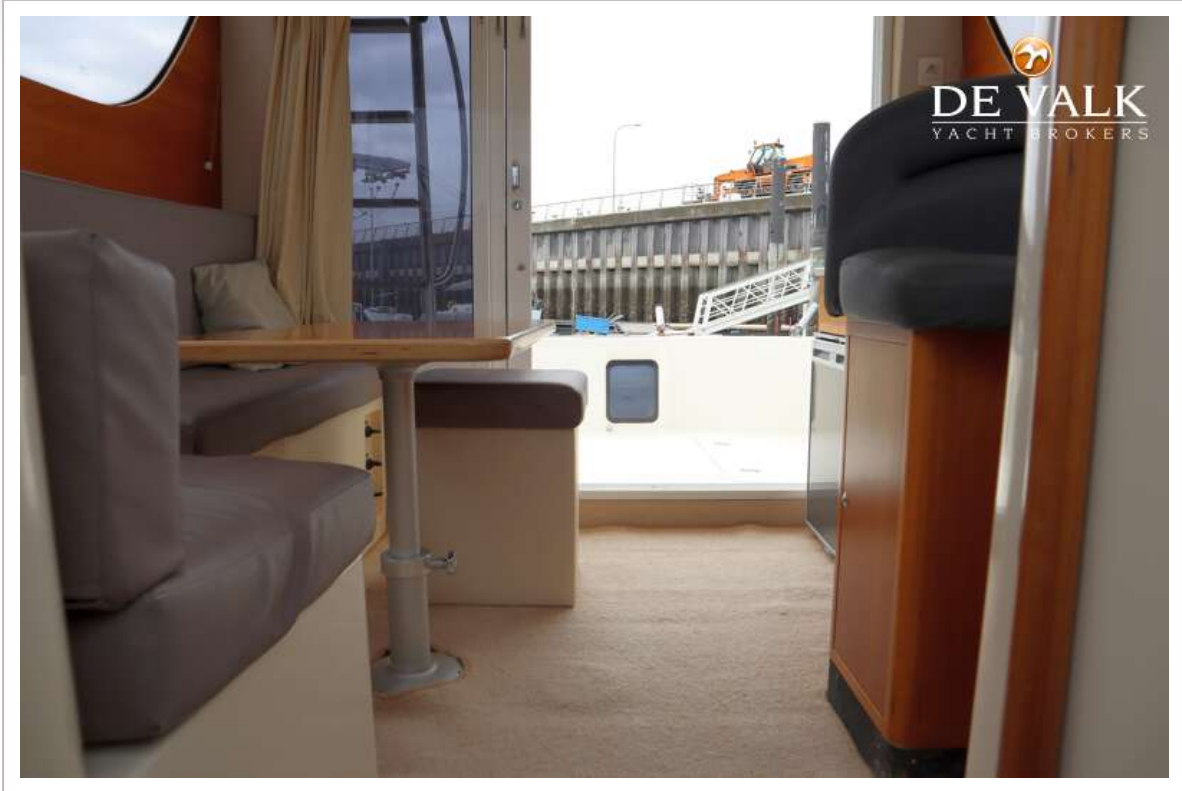
RODMAN 1040 ADVANCED



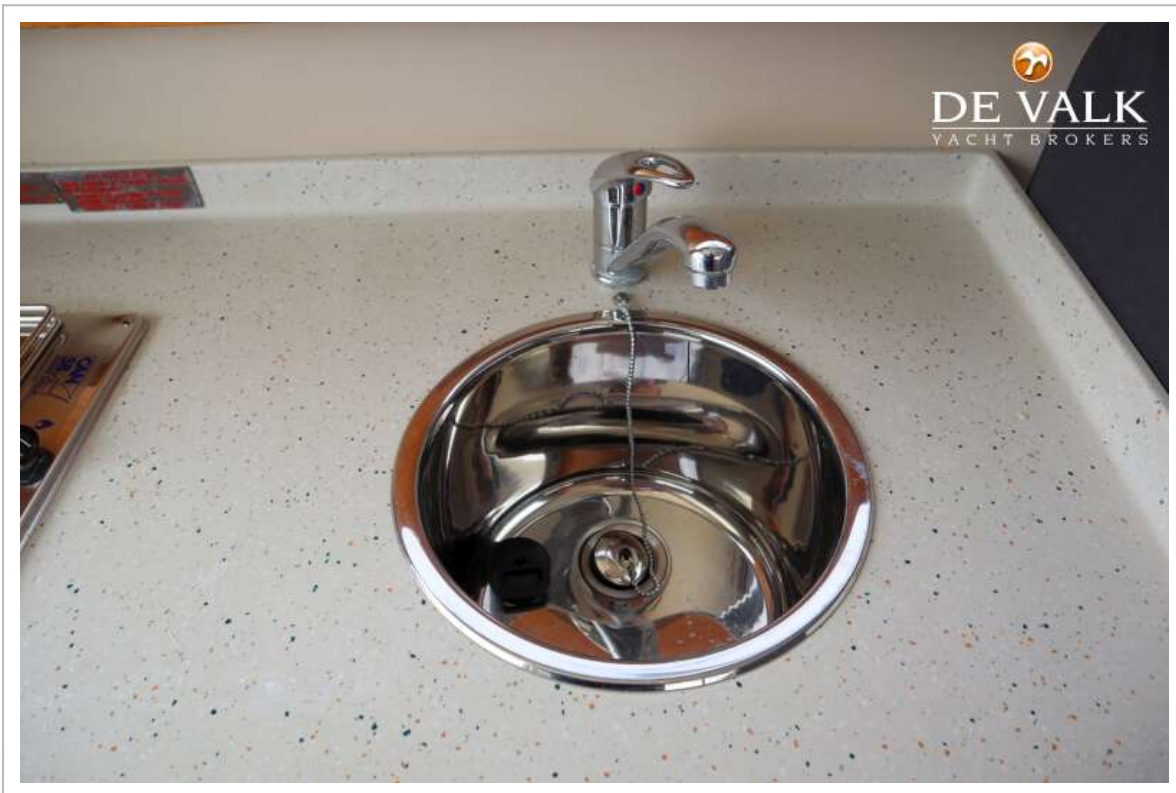
RODMAN 1040 ADVANCED



RODMAN 1040 ADVANCED



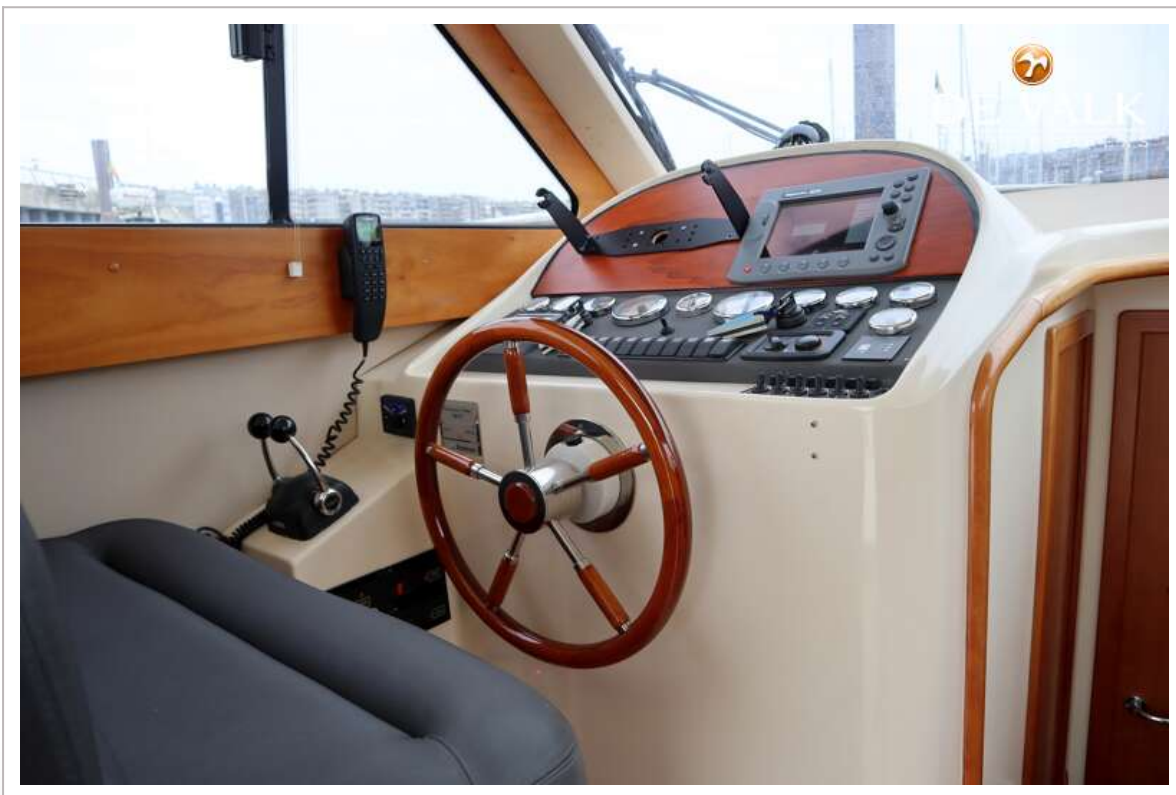
RODMAN 1040 ADVANCED



RODMAN 1040 ADVANCED



RODMAN 1040 ADVANCED



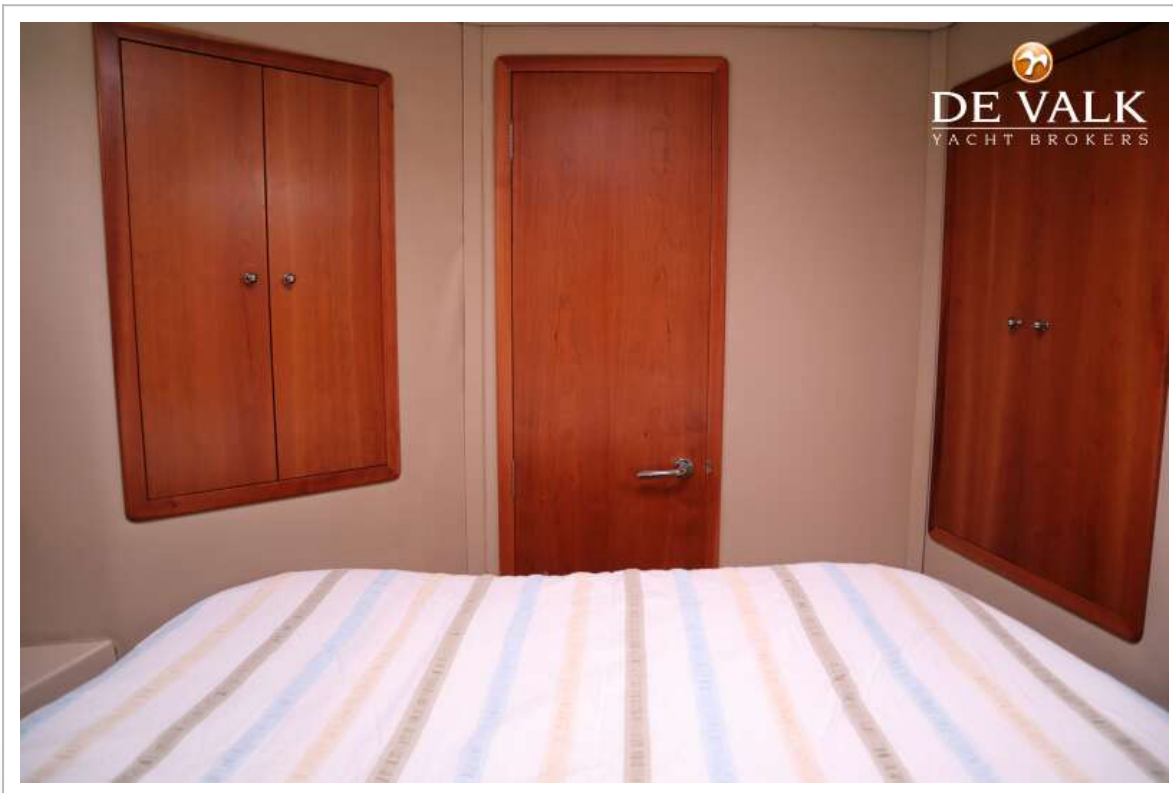
RODMAN 1040 ADVANCED



RODMAN 1040 ADVANCED



RODMAN 1040 ADVANCED



RODMAN 1040 ADVANCED



RODMAN 1040 ADVANCED



RODMAN 1040 ADVANCED



RODMAN 1040 ADVANCED

