



DE VALK
YACHT BROKERS



VRIPACK KOTTER 1300 AK



DE VALK
YACHT BROKERS

BROKER'S COMMENTS

The Vripack Kotter "Buijzer" is a sturdy motor kotter with a characteristic Vripack appearance that can withstand heavy weather. This motorcutter has a cozy teak interior with two spacious cabins, has a heavy bow thruster and a 120 Hp Daf 615 diesel. Due to the limited passage of 2,80 m you can reach a very large sailing area with this motor kotter. If you are interested in viewing this kotter, you can do so in our covered sales haber in Sneek.

Peter Spruyt

SPECIFICATIONS

Dimensions	13.00 x 4.23 x 1.10 (m)	Builder	Jachtservice Broeresloot Sneek
Built	1997	Cabins	2
Material	Steel	Berths	6
Engine(s)	1 x Daf 615 diesel	Hp/Kw	120.00 (hp), 88.20 (kw)
Asking price	sold (VAT)	Lying	at sales office

CONTACT

Sales office	De Valk Sneek	Telephone	+31 515 42 80 30
Address	Zwolsmanweg 7 8606 KC Sneek The Netherlands	E-mail	sneek@devalk.nl

DISCLAIMER

These particulars are given in good faith as supplied but cannot be guaranteed.



GENERAL

Model	VRIPACK KOTTER 1300 AK
Type	motor yacht
LOA (m)	13,00
LWL (m)	11,23
Beam (m)	4,23
Draft (m)	1,10
Air draft min (m)	2,80
Headroom (m)	2,00
Year built	1997
Builder	Jachtservice Broeresloot Sneek
Country	The Netherlands
Designer	Vripack
Displacement (t)	16
CE norm	NA
Hull material	steel
Hull colour	black
Hull shape	multi hard chine
Keel type	box keel
Superstructure material	steel
Rubbing strake	stainless steel
Deck material	steel
Deck finish	teak
Superstructure deck finish	paint
Cockpit deck finish	paint
Antifouling (year)	2019
Dorades	yes
Window frame	aluminium
Window material	glass
Deckhatch	2 x
Portholes	aluminium



Insulation	rockwool
Mast can be lowered	electric
Fuel tank (litre)	stainless steel 1000 ltr
Level indicator (fuel tank)	yes
Freshwater tank (litre)	stainless steel 1000 ltr
Level indicator (freshwater)	yes
Blackwater tank (litre)	polyethylene 100 ltr
Outside helm position	hydraulic
More info on paintwork	repainted 2020

ACCOMMODATION

Cabins	2
Berths	6
Interior	teak
Floor	teak and holly Carpet/ Teak
Saloon	yes
Headroom saloon (m)	2,00 mtr
Heating	central heating Kabola B 12 14 Kw
Aft Cabin	yes
Dinette	yes
Opening door to aft deck	yes
Galley	yes
Countertop	plastic
Sink	stainless steel
Cooker	calor gas 4 x
Fridge	Electrolux 110 ltr
Freezer	yes
Hot water system	220V + engine Boiler
Water pressure system	electrical
Owners cabin	French bed
Wardrobe	hanging and shelves



Bathroom	en suite
Toilet	en suite
Toilet system	manual
Wash basin	at the toilet
Shower	en suite
Guest cabin 1	v-bed
Wardrobe	hanging and shelves

MACHINERY

No of engines	1
Make	Daf
Type	615
HP	120
kW	88,20
Fuel	diesel
Year installed	1997
Maximum speed (kn)	8,2
Cruising speed (kn)	6,5
Consumption (l/hr)	8
Engine hours	4279
Engine cooling system	freshwater heat exchanger
Drive	shaft
Engine controls	bowden cable
Gearbox	hydraulic
Bowthruster	electric
Propeller type	fixed
Propeller shaft material	stainless steel
Shaft lubrication	grease
Electric bilge pump	yes
Electrical installation	24/ 220 volt
Start battery	2 x 74 Amp



Service battery	4 x 180 Amp
Battery charger/inverter	Victron 24/ 3000/ 70
Solar panel	2 x
Shorepower	with cable

NAVIGATION

Depth sounder	yes
VHF	Shipmate RS 8300
Rudder angle indicator	Vetus
Plotter	Simrad NX40
Navigation lights	yes

EQUIPMENT

Cockpit cover	yes
Boarding ladder	stainless steel
Anchor	Pool
Anchor chain	yes
Windlass	electrical
Davits	stainless steel
Davits controls	manual
Sea railing	stainless steel
Railing side opening gates	3 x
Wiper	1 x
Horn	electric
Fenders	yes
Mooring lines	yes
TV	2 x Philips
Radio	Sony
Speakers in salon	yes
Clock - barometer	yes
Fire extinguisher	yes





VRIPACK KOTTER 1300 AK



VRIPACK KOTTER 1300 AK



VRIPACK KOTTER 1300 AK



VRIPACK KOTTER 1300 AK



VRIPACK KOTTER 1300 AK



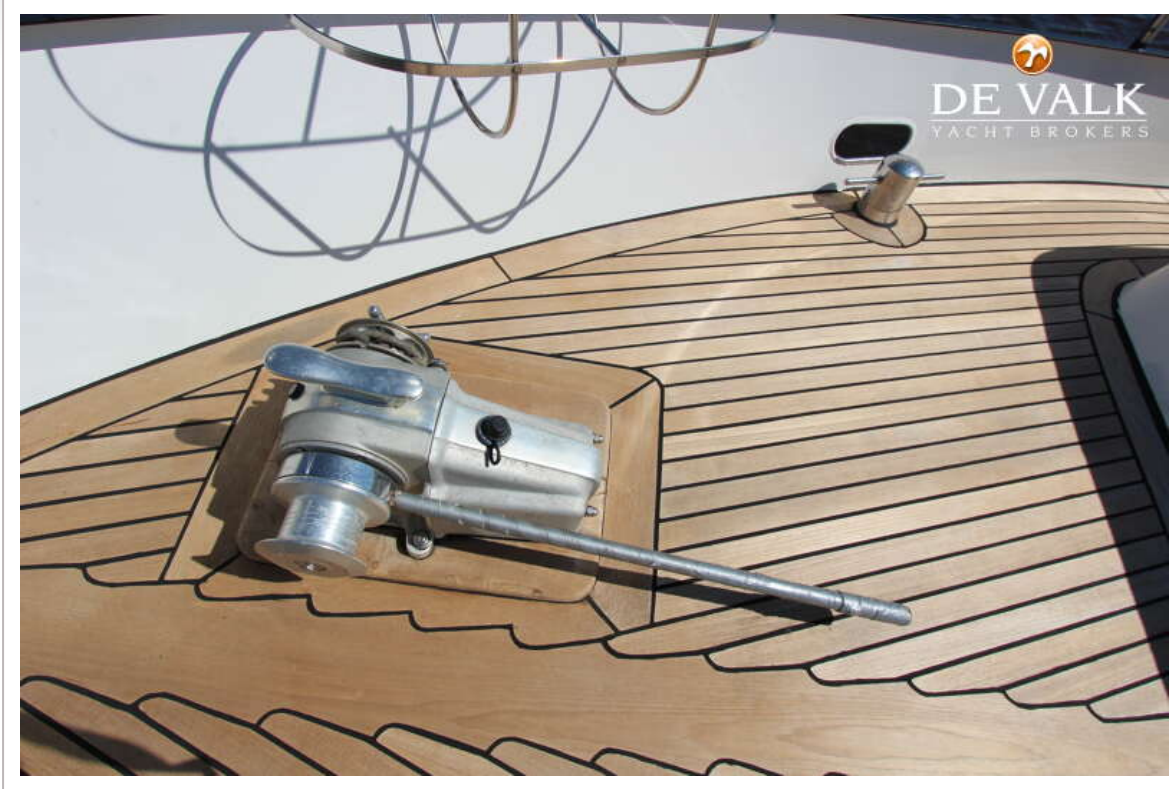
VRIPACK KOTTER 1300 AK



VRIPACK KOTTER 1300 AK



VRIPACK KOTTER 1300 AK



VRIPACK KOTTER 1300 AK



VRIPACK KOTTER 1300 AK



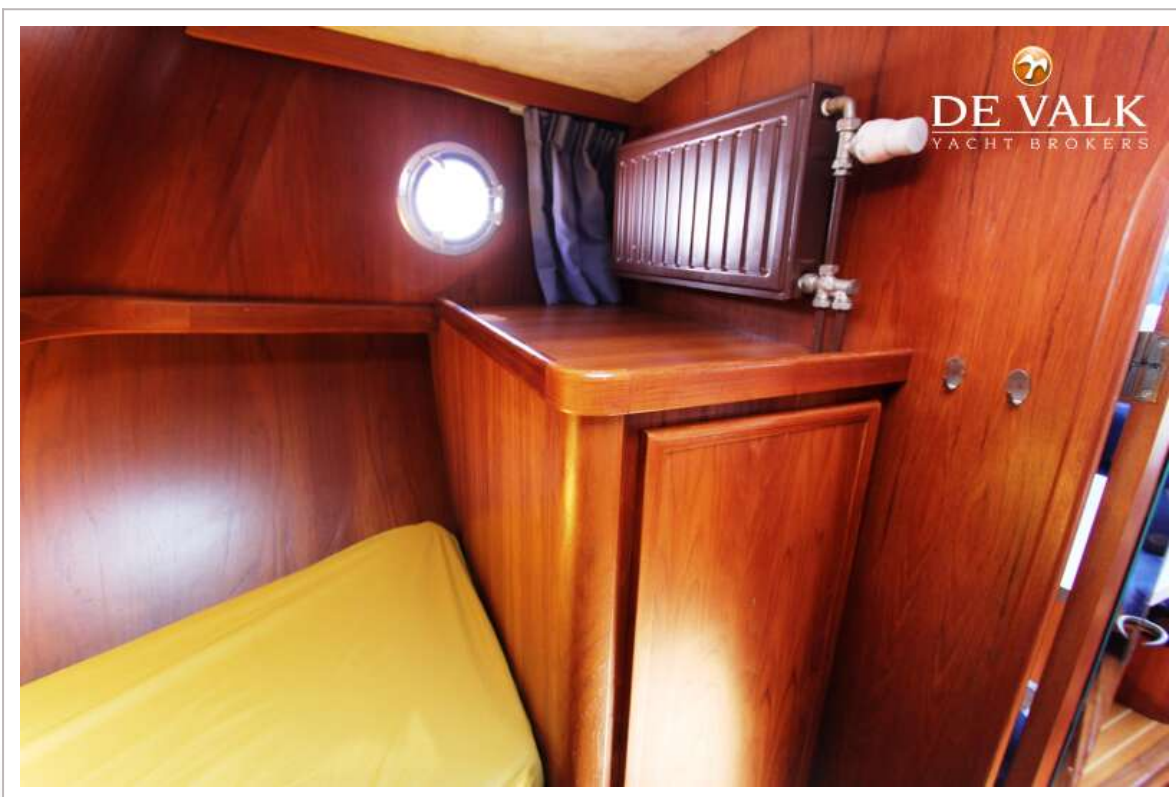
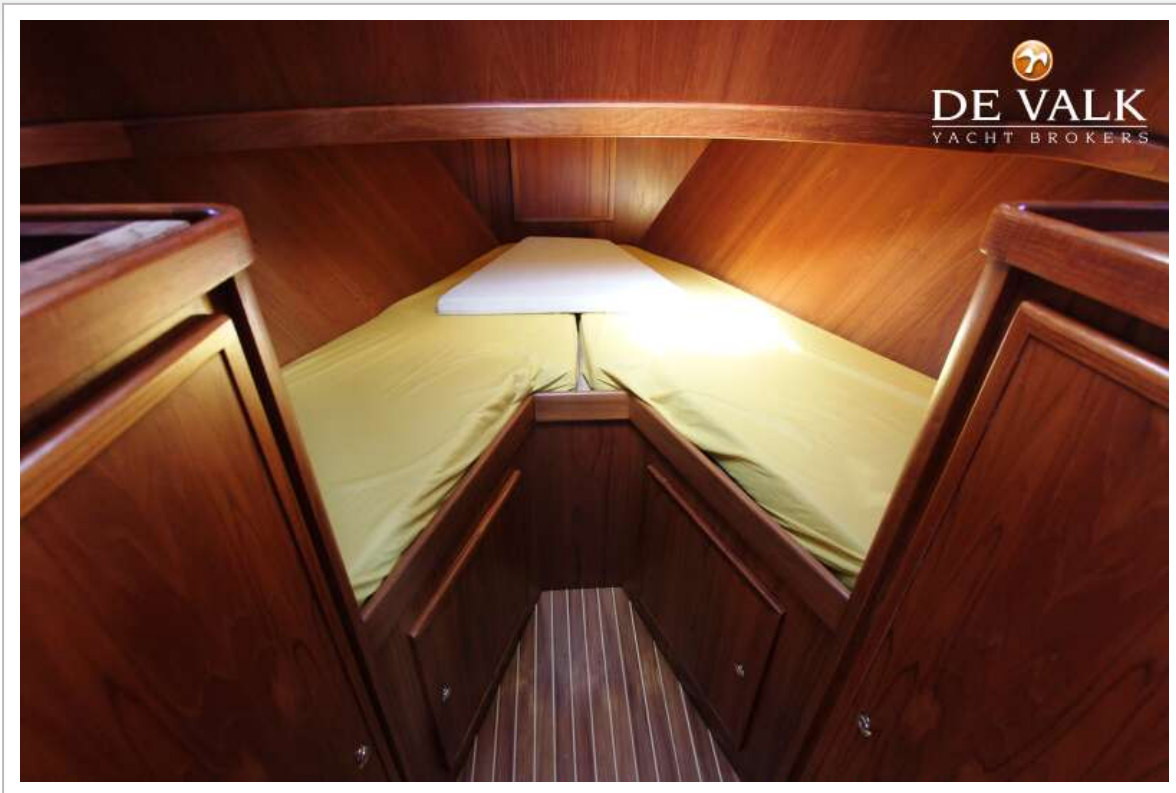
VRIPACK KOTTER 1300 AK



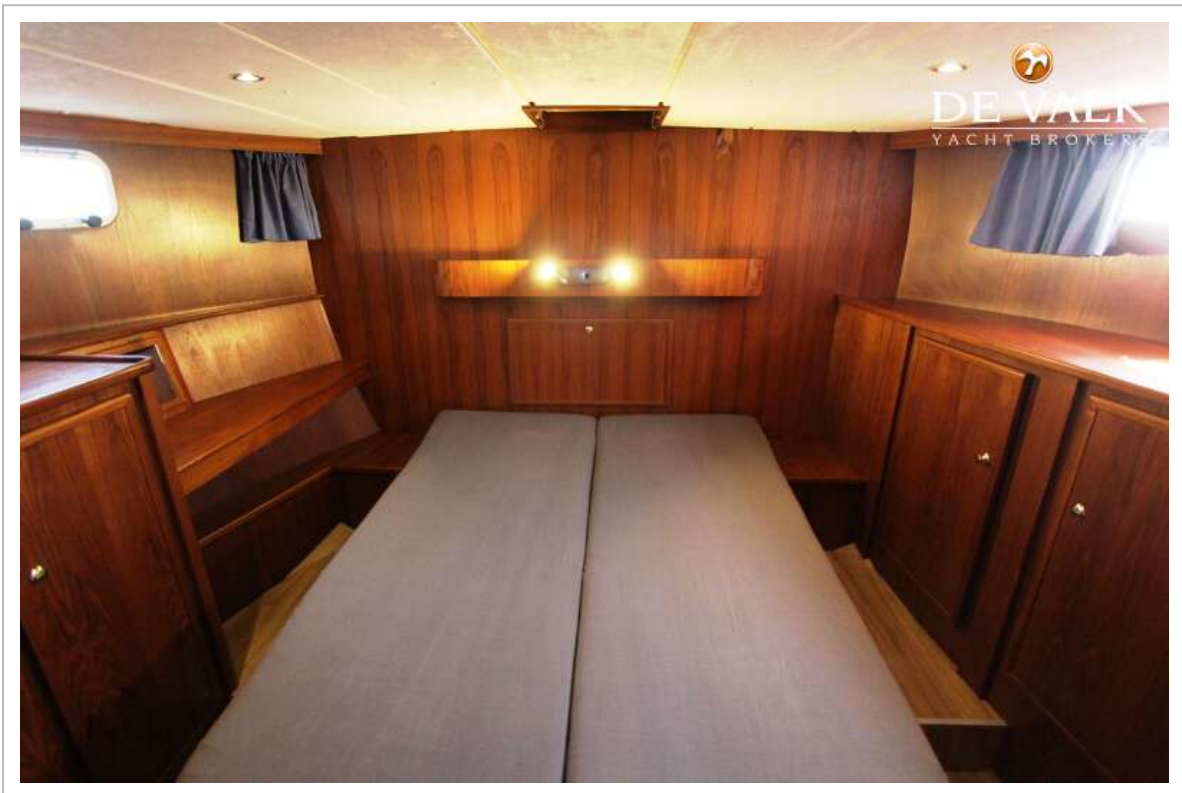
VRIPACK KOTTER 1300 AK



VRIPACK KOTTER 1300 AK



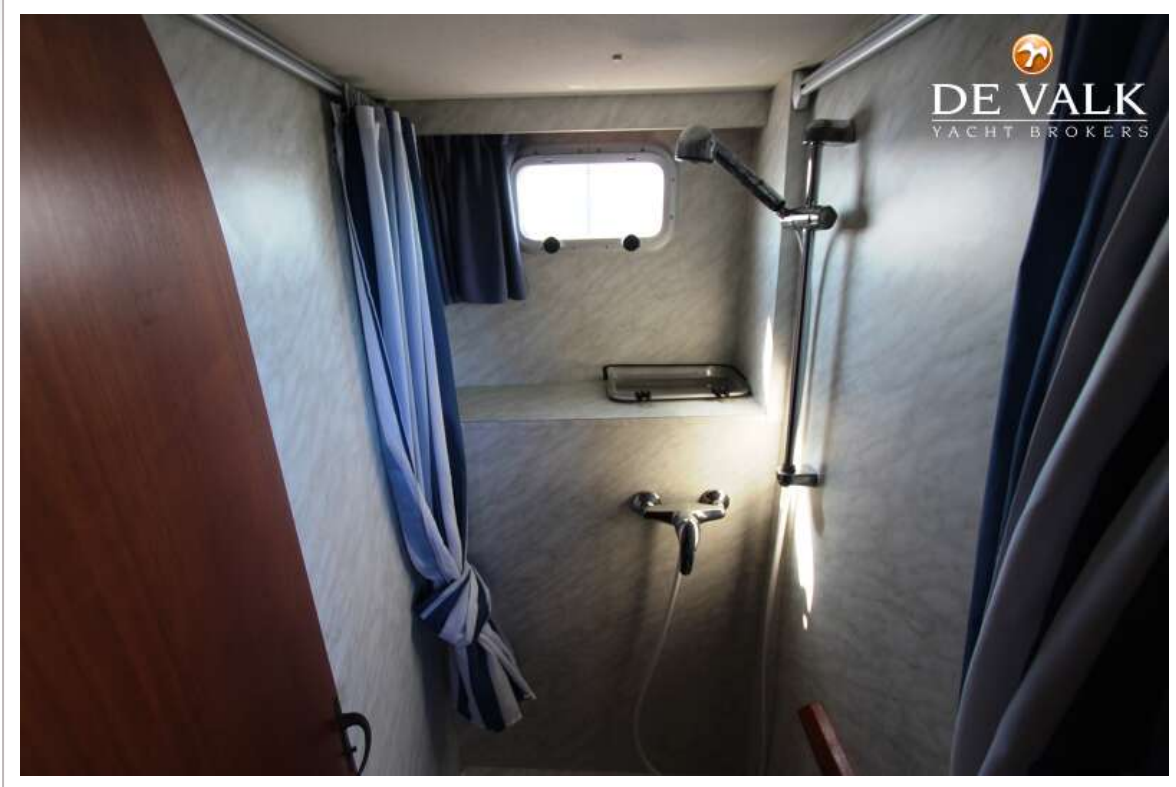
VRIPACK KOTTER 1300 AK



VRIPACK KOTTER 1300 AK



VRIPACK KOTTER 1300 AK



VRIPACK KOTTER 1300 AK



VRIPACK KOTTER 1300 AK

