



DE VALK  
YACHT BROKERS



## VAN DE STADT 44 LIFTING KEEL



DE VALK  
YACHT BROKERS

# VAN DE STADT 44 LIFTING KEEL

## BROKER'S COMMENTS

A true sailing and cruising machine from the hand of Satellite Yacht Design. Tyfoon is a well balanced yacht, stiff, strong and relatively lightweight hull. Built for the discerning sailor. A hydraulic lifting keel with 1.64 M. min. / 2.84 M. max draft which makes this yacht versatile and unique. Comfortable inland and blue water cruising, speed and even exploring the Arctic waters, you can do it all. Built with nothing less than high quality materials, study the details and you will notice an impressive list of brand new A1 equipment. She's in every aspect truly in a ready to go condition.

*Harald Padberg*

## SPECIFICATIONS

<b>Dimensions</b>	13.30 x 4.16 x 1,64 / 2.84 (m)	<b>Builder</b>	GCB Composietbouw
<b>Built</b>	2008	<b>Cabins</b>	2
<b>Material</b>	Epoxy and foam core	<b>Berths</b>	6
<b>Engine(s)</b>	1 x VW Marine SDi-4 diesel	<b>Hp/Kw</b>	60 (hp), 44.16 (kw)
<b>Asking price</b>	sold (VAT )	<b>Lying</b>	at sales office

## CONTACT

<b>Sales office</b>	De Valk Monnickendam	<b>Telephone</b>	+31 299 65 63 50
<b>Address</b>	Hoogedijk 6 1145 PM Katwoude The Netherlands	<b>E-mail</b>	monnickendam@devalk.nl

## DISCLAIMER

These particulars are given in good faith as supplied but cannot be guaranteed.



# VAN DE STADT 44 LIFTING KEEL

## GENERAL

<b>Model</b>	VAN DE STADT 44 LIFTING KEEL
<b>Type</b>	sailing yacht
<b>LOA (m)</b>	13,30
<b>Beam (m)</b>	4,16
<b>Draft (m)</b>	2,84
<b>Draft min (m)</b>	1,64
<b>Air draft (m)</b>	23,00
<b>Headroom (m)</b>	2,15
<b>Year built</b>	2008
<b>Launched</b>	March 2009
<b>Builder</b>	GCB Composietbouw
<b>Country</b>	The Netherlands
<b>Designer</b>	Www.yacht-design.nl - Kees van de Stadt
<b>Displacement (t)</b>	9,4
<b>Ballast (tonnes)</b>	3,84
<b>CE norm</b>	NA
<b>Hull material</b>	epoxy and foam core
<b>Hull colour</b>	blue
<b>Hull shape</b>	round-bilged
<b>Keel type</b>	lifting keel
<b>Superstructure material</b>	composite
<b>Deck material</b>	composite
<b>Deck finish</b>	non-skid moulded in
<b>Superstructure deck finish</b>	non-skid moulded in
<b>Cockpit deck finish</b>	non-skid moulded in
<b>Antifouling (year)</b>	2021 - CopperCoat
<b>Window material</b>	polycarbonate
<b>Deckhatch</b>	4 X
<b>Portholes</b>	6 X
<b>Insulation</b>	foam



# VAN DE STADT 44 LIFTING KEEL

<b>Fuel tank (litre)</b>	epoxy - 300 L.
<b>Level indicator (fuel tank)</b>	Philippi P-BUS System Monitor - tank interface
<b>Freshwater tank (litre)</b>	epoxy - 600 L.
<b>Level indicator (freshwater)</b>	Philippi P-BUS System Monitor - tank interface
<b>Blackwater tank (litre)</b>	epoxy
<b>Level indicator (blackwater)</b>	Philippi P-BUS System Monitor - tank interface
<b>Wheel steering</b>	Jefa Steering system
<b>Emergency tiller</b>	yes
<b>More info on hull</b>	yes
<b>More info on paintwork</b>	2021 scraping & sanding of the entire hull under the waterline, new primer and applying new layers CopperCoat
<b>Extra info</b>	Hydraulic lifting keel - incl. manual override. Electronic pushbutton keel operation in cockpit. Twin balanced rudder. Performance: speeds of 16+ knots under sail have been clocked !!

## ACCOMMODATION

<b>Cabins</b>	2
<b>Berths</b>	6
<b>Interior</b>	beech
<b>Floor</b>	Esthec
<b>Headroom saloon (m)</b>	2,15 meter
<b>Heating</b>	central hot water - Eberspächer
<b>Navigation center</b>	yes
<b>Chart table</b>	yes
<b>Dinette</b>	yes
<b>Galley</b>	with SoftMotion closing drawers
<b>Countertop</b>	Duropal
<b>Sink</b>	stainless steel
<b>Cooker</b>	Force 10
<b>Oven</b>	Force 10
<b>Fridge</b>	Waeco Coolmatic CB-040 + Waeco Coolmatic RSD-115



# VAN DE STADT 44 LIFTING KEEL

Hot water system	on central heating
Water pressure system	electrical
Owners cabin	v-bed
Bed length (m)	2.00 meter
Wardrobe	hanging and shelves
Bathroom	en suite
Wash basin	in the bathroom En suite
Shower	en suite
Guest cabin 1	double bed
Bed length (m)	2.05 meter
Wardrobe	hanging and shelves
Toilet	shared
Toilet system	manual
Extra info	Starboard and portside benches can be used as a berth. Owners and aft cabin mattresses with Viva Clip spring/ventilation system.
Extra info	In 2022 indirect LED lighting installed in the floor + LED lighting in the salon + cabins. Reading lamps with USB connector. Indirect lighting can also be illuminated with remote control in all colours.
Extra info	Calor gas system (pipes, hoses, fittings, etc.) new installed in 2022 - (system was not present).
Extra info	New toilet and hoses in 2021.
Extra info	In 2021 a complete new hot water system installed + new taps in kitchen, shower and toilet room + installation of deck shower.
Extra info	Nautic Boiler 1200W - 40 Liter for warm water; new in 2021. Eberspächer heating new in 2021. Warm water central heating system controlled via thermostat. Independent system, not engine dependent.

## MACHINERY

No of engines	1
Make	VW Marine
Type	SDi-4



# VAN DE STADT 44 LIFTING KEEL

<b>HP</b>	60
<b>kW</b>	44.16
<b>Fuel</b>	diesel
<b>Maximum speed (kn)</b>	9,5
<b>Cruising speed (kn)</b>	7
<b>Engine hours</b>	602
<b>Engine cooling system</b>	freshwater heat exchanger
<b>Drive</b>	sail-drive
<b>Saildrive seal</b>	yes
<b>Engine controls</b>	bowden cable - Spinlock handle
<b>Gearbox</b>	hydraulic
<b>Propeller type</b>	folding - Gori overdrive
<b>Propeller blades</b>	3
<b>Manual bilge pump</b>	yes
<b>Electric bilge pump</b>	yes
<b>Electrical installation</b>	12/24/220 V system; new in 2022. Throughout the boat 220V via the inverter. All batteries are connected and equipped with charge controllers, all can be switched on or off. The engine can also be started via the service battery. Automatic main switches in front of each battery bank. Whole system is equipped with automatic fuses.
<b>Start battery</b>	1 x Optima Red Top
<b>Service battery</b>	4 x 75 Ah AGM 24v + 1 x 210 Ah Gel 12v - all new 2021
<b>Windlass battery</b>	and for future bow thruster: 2 X 105 Ah AGM - new 2021
<b>Battery monitor</b>	Philippi P-BUS System Monitor PSM 2 + Suder RCC-02 Remote Control
<b>Battery charger/inverter</b>	Studer Xtender XTH 5000-24 + Studer Xtender XTH 5000-24 + Victron Orion 24/12-70A non isolated DC/DC + Victron Energy Lynx Distributor + CTEK Multi XS 7000
<b>Shorepower</b>	with cable
<b>Extra info</b>	Electrical wiring for installation of bow thruster installed 2022
<b>Extra info</b>	Gori prop overhauled in 2021, new Zinc anodes 2021 and engine service in 2022



## NAVIGATION

<b>Electric compass</b>	yes
<b>Multi control display</b>	Exterior navigation "mirrored" with interior.
<b>Depth sounder/log</b>	yes
<b>Windset</b>	Garmin - new in 2021
<b>VHF</b>	Garmin VHF 215 + AIS inside and Garmin GHS 11i, incl. AIS handset outside - both new 2022
<b>VHF handheld</b>	Garmin GHS 11i, incl. AIS - new 2022
<b>Autopilot</b>	Garmin GHC-20 display + JEFA - DU TS6 electronic transmission drive - new in 2021
<b>Rudder angle indicator</b>	yes
<b>Radar</b>	Garmin Fantom - new in 2021
<b>Radar/GPS/plotter</b>	Garmin GPSMAP 1222 PLUS - 12 inch - new 2022
<b>Electronic chart(s)</b>	Garmin Blue Charts Alborg/Amsterdam - new 2021
<b>EPIRB</b>	yes
<b>Navigation lights</b>	all LED - new in 2022
<b>Extra info</b>	New custom made Stainless Steel pedestal + Scanstrut helmpod installed in 2022.

## EQUIPMENT

<b>Sprayhood</b>	new in 2021
<b>Deck shower</b>	with warm and cold water - new in 2021
<b>Anchor</b>	Ultra 21 KG (46 LBS) 316 Stainless Steel ( 2022 )
<b>Anchor chain</b>	10 mm. Stainless Steel - new 2022
<b>Windlass</b>	electrical - Loftrans ( 2022 )
<b>Sea railing</b>	wire
<b>Grab rail (superstructure)</b>	teak
<b>Railing side opening gates</b>	2 X
<b>Pushpit</b>	yes
<b>Pulpit</b>	yes
<b>Danbuoy</b>	yes
<b>Horn</b>	electric



# VAN DE STADT 44 LIFTING KEEL

<b>Fenders</b>	yes
<b>Mooring lines</b>	yes
<b>TV</b>	Telefunken LCD multi display on swivel-arm. Connected with JVC multimedia player. Also to be used as navigation display. New 2022.
<b>Radio-cd player</b>	- DVD player JVC KW-V2550 DBT - 6,2" touch screen multimedia - new in 2022
<b>Speakers in salon</b>	2 X Fusion 60W - new in 2022
<b>Extra info</b>	LED cockpit lights (6 x), LED lights at steering pedestal + LED deck lights (2 x) in mast installed in 2022.





## Extra info

A brief description about the building process. The original owner and designer started from scratch. He wanted to have a yacht which had to be safe, light weighted, easy to handle (like a small open boat), capable of sailing shallow waters, had to have performance qualities and a spacious interior with comfort. During the designing and building process, original owner and designer consulted and collaborated with renowned professionals from various industries among which craftsmen from Fokker Aerospace, the professionals from Polyworx, which are specialists in building Composite / Core-Cell structures and of course several highly skilled specialists from the Dutch boating building industry. The hull requires almost no maintenance and there is no risk of rotting, delaminating or osmosis. Vacuum infusion method is used to build the hull instead of the hand lay-up, which can cause problems. This infusion method assures an extremely high quality and resin-fiber ratio. The inherently high strength and light weight make this material ideal for a performance cruising yacht. An added advantage is that the closed cell structure makes it air-tight and extremely suitable for vacuum infusion. High-density foam has been used in critical places in the hull and deck to enable an extreme strong mounting surface of the rails. This technique has also been used for deck - hull connection. Main rigging chain plates are mounted directly on reinforcements which assures no stretch on the through deck connection. Front and backstay chain plates are fabricated of extra wide laminated and multiple layers of carbon band. Forces are very well distributed over a large surface. Keel area / surrounding is a solid laminate. Inner and outer laminate come together to assure a bullet-proof structure. The keel box runs through this surface and is casted in reinforced epoxy, all the way up. This assures that the keel box is completely clamped-in and is much stronger compared to a bolted keel.

## RIGGING

Rigging	fractional with backstays
Standing rigging	Rod
Brand mast	John mast
Material mast	aluminium
Spreaders	3 sets - angle 15°



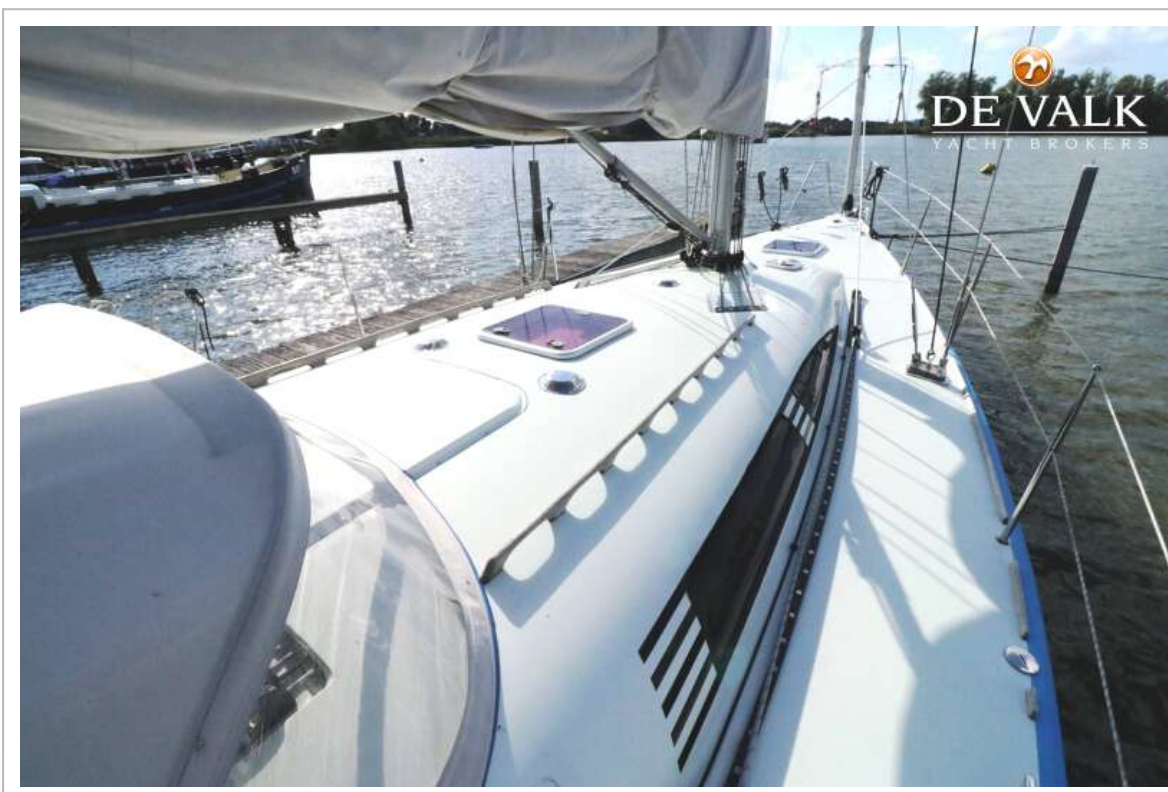
<b>Reefing System</b>	quick-one-line-reefing
<b>Backstay adjuster</b>	hydraulic - Sailtec
<b>Boomvang</b>	mechanical and tackle
<b>Primary sheet winch</b>	2 X Andersen 46ST - 2 speed
<b>Secondary sheet winch</b>	2 X Andersen 58ST - 2 speed
<b>Multifunctional winches</b>	2 X Andersen 46ST - 2 speed
<b>Gennaker pole</b>	carbon
<b>Extra info</b>	Mainsail: Gaastra Custom Axis Laminate with batten. Category: 3 Technora 60 m2. Full batten upgrade incl. battcars. Three reefing points. Laminated radiale corners, clew, tack and head. Control lines in leech and foot. Jib Gaastra High aspect Custom Axis Laminate with batten. Categorie: 2 Technora. 37 m2. Tray dacron UV protection. Laminated radiale corners. Control lines in leech and foot. Gaastra Gennaker 150 m2. Mainsail and Jib are of high quality can be used in light and heavy weather. Spinnaker also present. All sails are used very little.
<b>Extra info</b>	Mast en stays inspected in 2022. Harken Furl system MKIV Unit 3 - through deck operated from the cockpit. Inner forestay is available - never used. Two running backstays. Winches can be converted to electrical units. Deck blocks all Ronstan ballbearing and high quality. Ronstan tracks 30 series. Ronstan ball bearing travellers with control sheaves. Ronstan ball bearing sheave for sheets. Line clamps Spinlock.



# VAN DE STADT 44 LIFTING KEEL



# VAN DE STADT 44 LIFTING KEEL



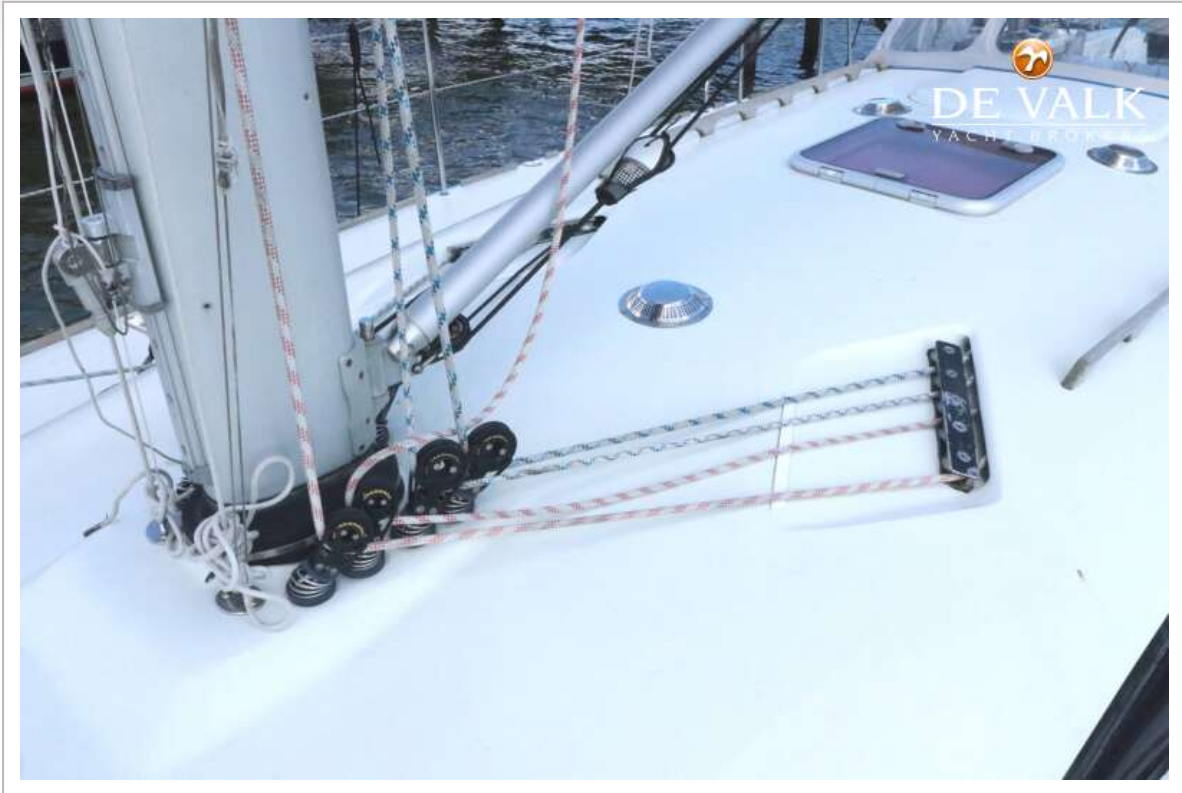
# VAN DE STADT 44 LIFTING KEEL



VAN DE STADT 44 LIFTING KEEL



VAN DE STADT 44 LIFTING KEEL

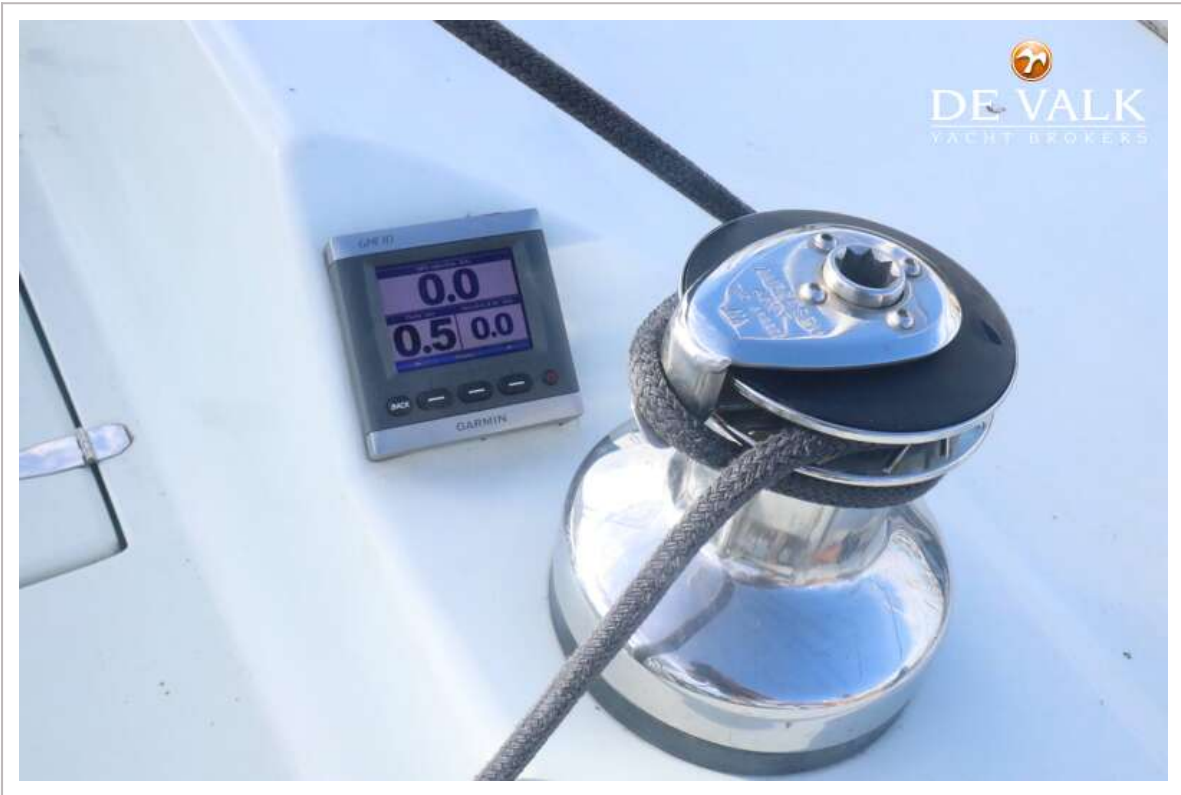


# VAN DE STADT 44 LIFTING KEEL





VAN DE STADT 44 LIFTING KEEL



# VAN DE STADT 44 LIFTING KEEL



# VAN DE STADT 44 LIFTING KEEL



# VAN DE STADT 44 LIFTING KEEL



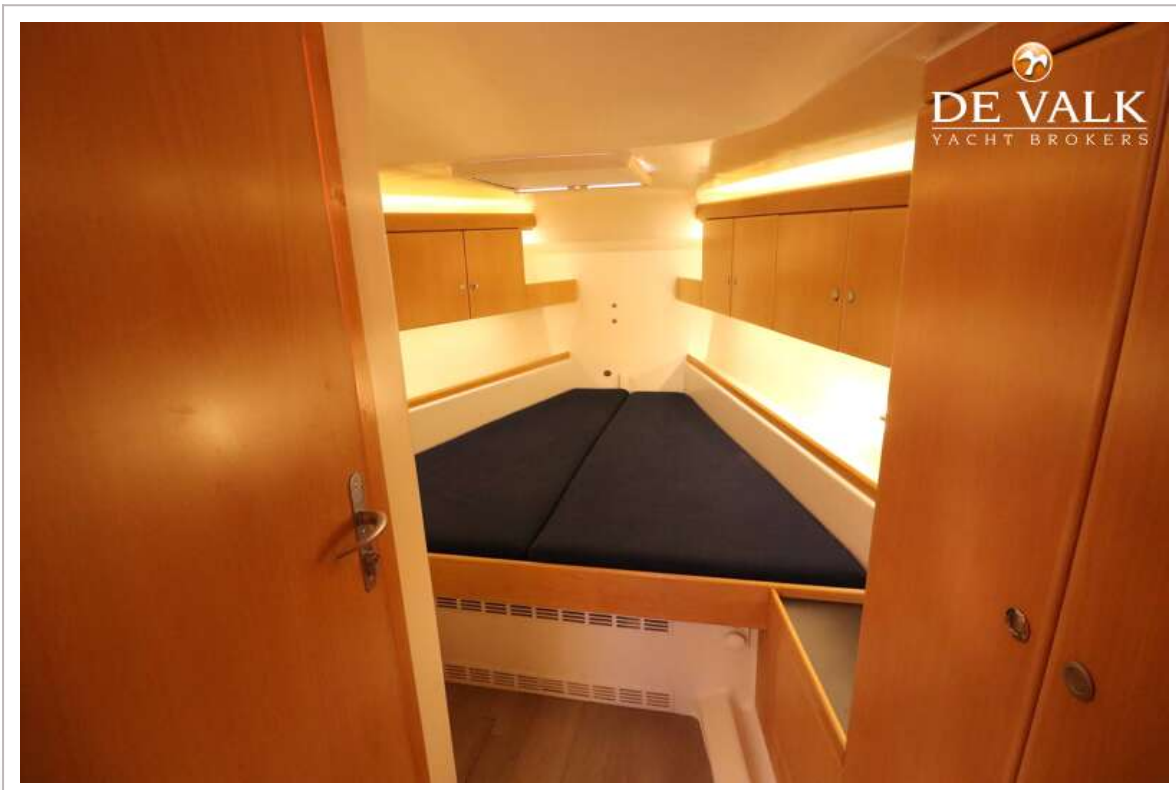
# VAN DE STADT 44 LIFTING KEEL



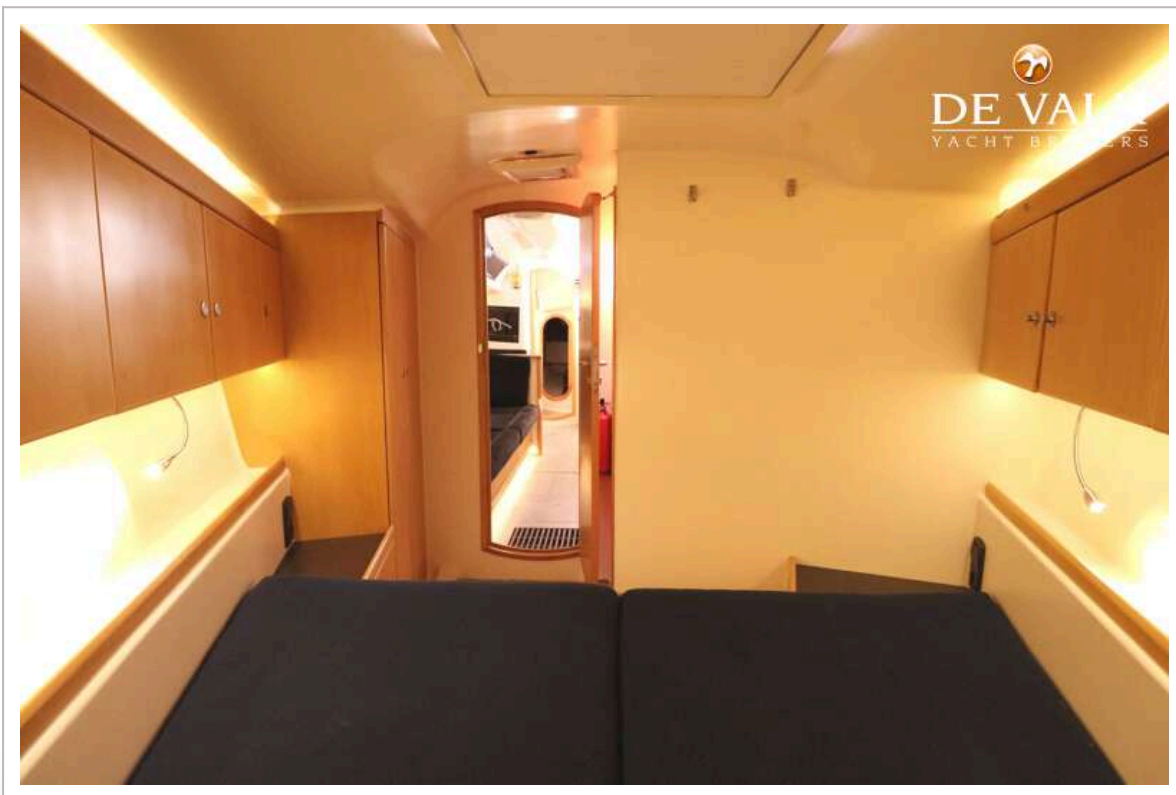
VAN DE STADT 44 LIFTING KEEL



# VAN DE STADT 44 LIFTING KEEL

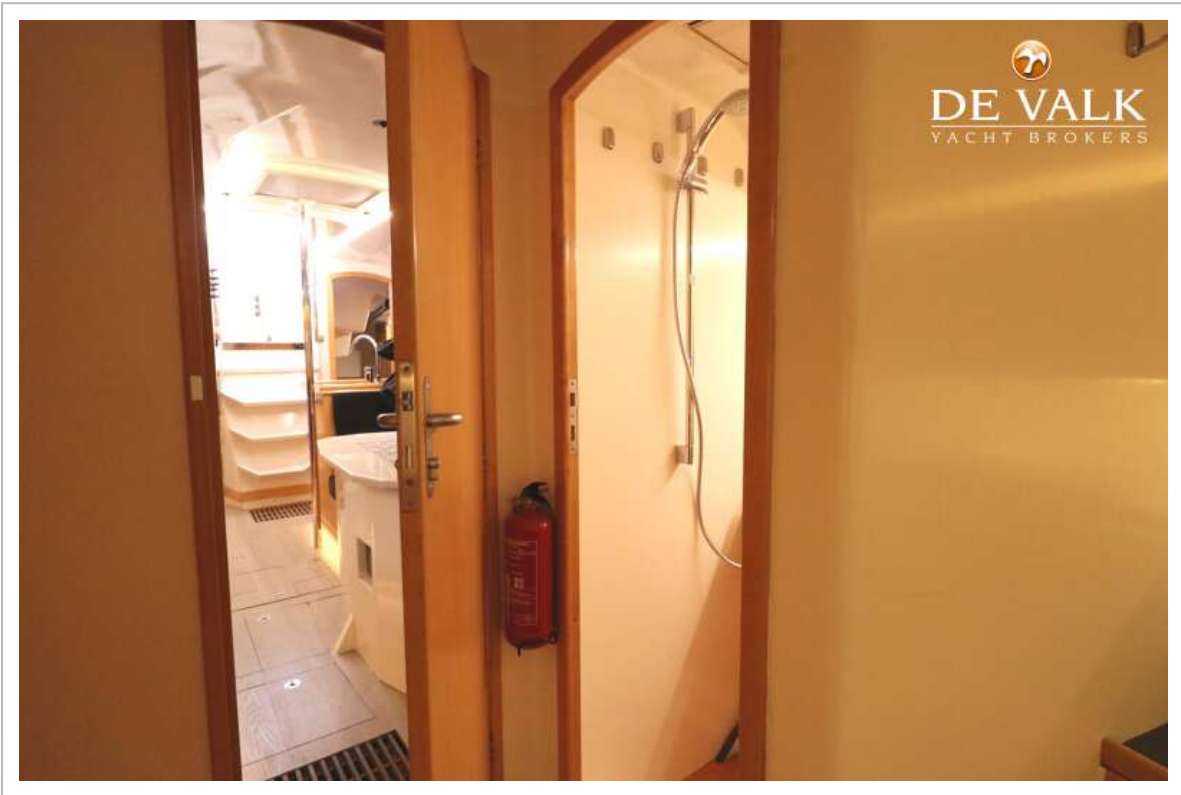


# VAN DE STADT 44 LIFTING KEEL





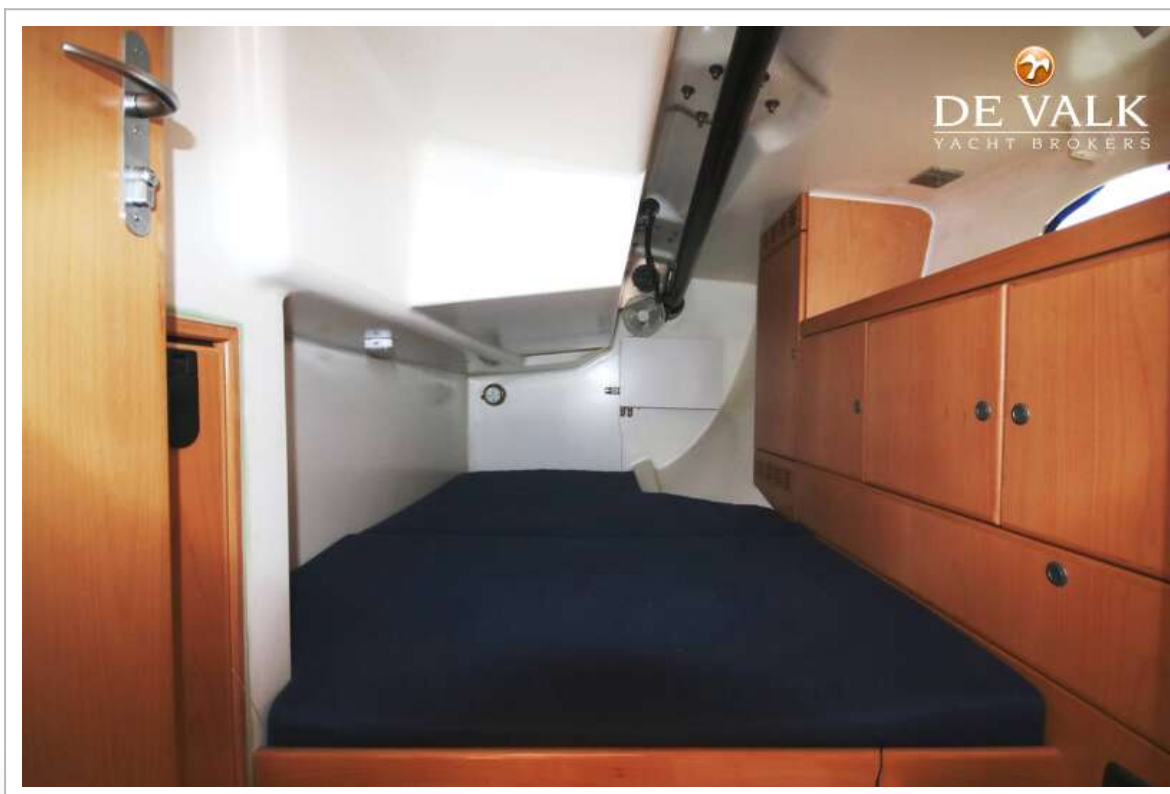
VAN DE STADT 44 LIFTING KEEL



VAN DE STADT 44 LIFTING KEEL



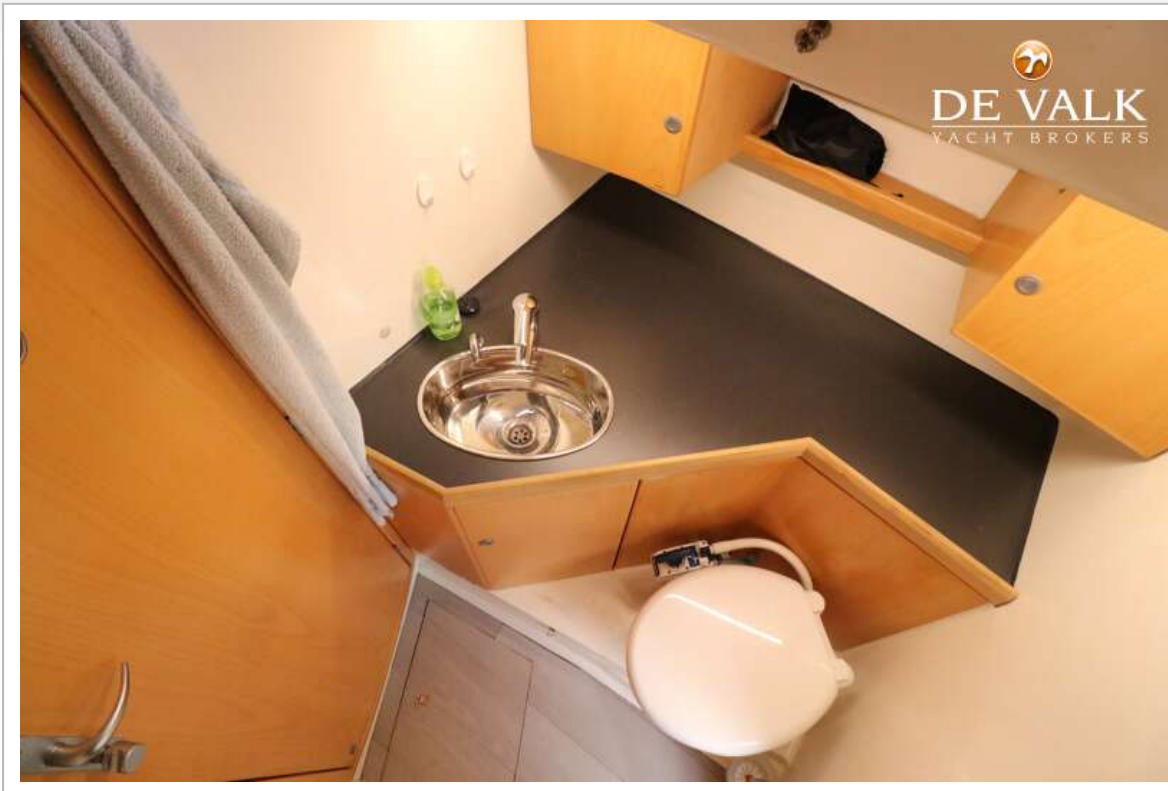
# VAN DE STADT 44 LIFTING KEEL



# VAN DE STADT 44 LIFTING KEEL



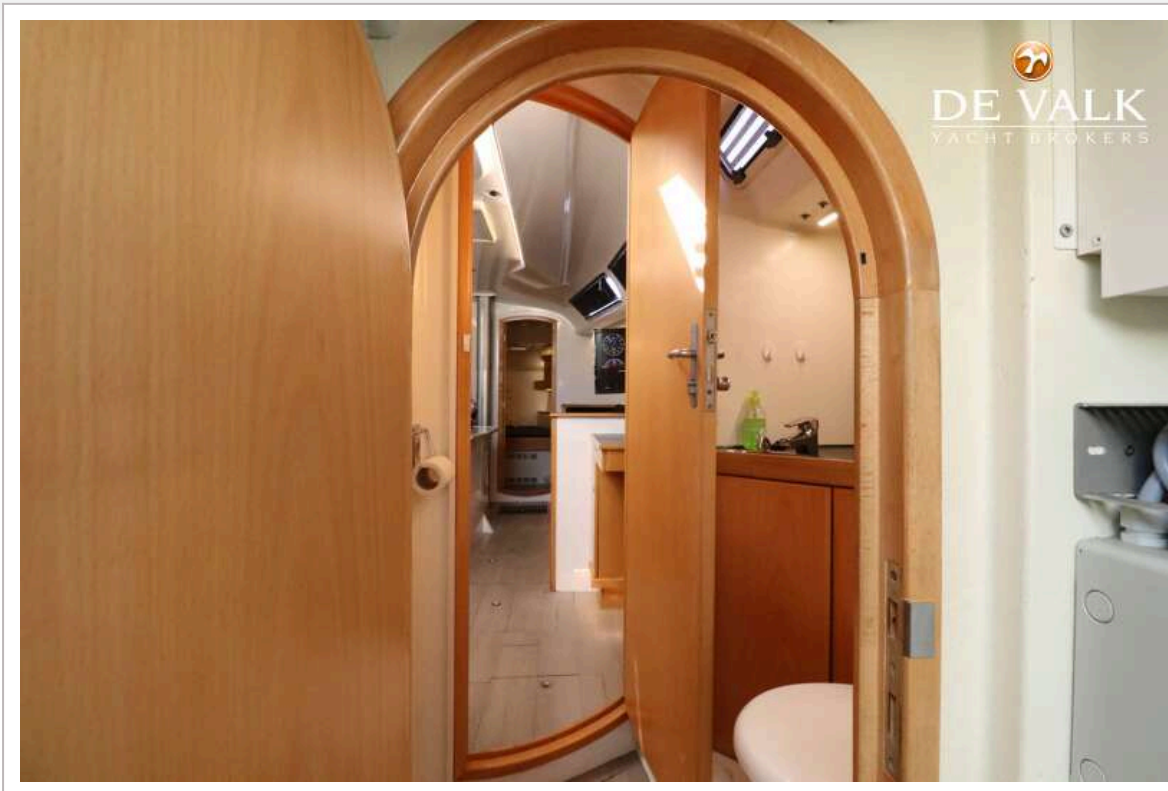
# VAN DE STADT 44 LIFTING KEEL



# VAN DE STADT 44 LIFTING KEEL



# VAN DE STADT 44 LIFTING KEEL



# VAN DE STADT 44 LIFTING KEEL

