



DE VALK
YACHT BROKERS



HALLBERG RASSY 36 MKII



DE VALK
YACHT BROKERS

HALLBERG RASSY 36 MKII

BROKER'S COMMENTS

This perfectly maintained Hallberg Rassy 36, designed by German Frers, is a joy to look at and above all a pleasure to sail. Her excellent sailing qualities and easy manoeuvrability make a long stay on board a pure pleasure. Her solar panels in combination with the wind generator allow you to stay onboard for a long time in all comfort. Now ready to be admired and inspected 7 days a week in our sales harbour in Hindeloopen.

Henri van Eelen

SPECIFICATIONS

Dimensions	11.31 x 3.55 x 1.70 (m)	Builder	Hallberg Rassy Varv
Built	1997	Cabins	2
Material	GRP	Berths	6
Engine(s)	1 x Volvo Penta MD22 diesel	Hp/Kw	57.00 (hp), 41.90 (kw)
Asking price	sold (VAT)	Lying	at sales office

CONTACT

Sales office	De Valk Hindeloopen	Telephone	+31 514 52 40 00
Address	Oosterstrand 1 8713 JS Hindeloopen The Netherlands	E-mail	hindeloopen@devalk.nl

DISCLAIMER

These particulars are given in good faith as supplied but cannot be guaranteed.



HALLBERG RASSY 36 MKII

GENERAL

Model	HALLBERG RASSY 36 MKII
Type	sailing yacht
LOA (m)	11,31
LWL (m)	10,36
Beam (m)	3,55
Draft (m)	1,70
Air draft (m)	16,00
Headroom (m)	1,95
Year built	1997
Builder	Hallberg Rassy Varv
Country	Sweden
Designer	German Frers
Displacement (t)	7,5
Ballast (tonnes)	lead 3,6
Hull material	GRP
Hull colour	white
Hull shape	round-bilged
Keel type	fin keel
Superstructure material	GRP
Rubbing strake	GRP with brass strip
Deck material	GRP
Deck finish	teak
Superstructure deck finish	non-skid moulded in
Cockpit deck finish	teak
Antifouling (year)	2021
Dorades	2
Window frame	aluminium
Window material	tempered glass
Deckhatch	4x
Fuel tank (litre)	stainless steel 345 ltr.



HALLBERG RASSY 36 MKII

Level indicator (fuel tank)	yes
Freshwater tank (litre)	stainless steel Two tanks total 355 ltr.
Level indicator (freshwater)	yes
Blackwater tank (litre)	stainless steel Approx. 60 ltr.
Blackwater tank extraction	UW line
Wheel steering	cable steering
Emergency tiller	Yes
Extra info	8 windows can be opened

ACCOMMODATION

Cabins	2
Berths	6
Interior	mahogany
Floor	teak and holly With carpet
Saloon	yes
Headroom saloon (m)	1,90 mtr.
Heating	diesel ducted hot air Webasto
Navigation center	yes
Chart table	yes
Aft Cabin	yes
Galley	yes
Countertop	Duropal
Sink	stainless steel
Cooker	calor gas 3 burner
Oven	In cooker
Fridge	yes
Hot water system	220V + engine
Water pressure system	electrical
Manual and/or foot pump	yes
Owners cabin	double bed + single bed Aft cabin
Bed length (m)	2,00



HALLBERG RASSY 36 MKII

Wardrobe	hanging and drawers
Guest cabin 1	v-bed Front
Bed length (m)	2,00
Wardrobe	hanging and shelves
Bathroom	shared
Toilet	Jabsco
Toilet system	manual
Wash basin	Yes
Shower	Yes

MACHINERY

No of engines	1
Make	Volvo Penta
Type	MD22
HP	57
kW	41,90
Fuel	diesel
Maximum speed (kn)	7
Cruising speed (kn)	6
Consumption (l/hr)	3
Engine cooling system	freshwater heat exchanger
Drive	shaft
Engine controls	bowden cable
Gearbox	mechanical
Bowthruster	electric
Exhaust	watercooled
Propeller type	folding
Propeller shaft material	stainless steel
Shaft lubrication	water
Manual bilge pump	yes
Electric bilge pump	yes



HALLBERG RASSY 36 MKII

Electrical installation	yes
Start battery	70Ah - 2019
Service battery	3x 120Ah
Battery monitor	Philippi
Battery charger	yes
Wind generator	2010 Superwind 350 - 12V - 350W
Solar panel	2014 2x Phaesum PN-SPR S85s 85 Wp12V
Diode battery combiners	yes
Shorepower	with cable
Extra info	adjustable brackets for 2 solar panels on the railing

NAVIGATION

Compass	Suunto
Multi control display	Autohelm Multi
Depth sounder	Autohelm Depth
Log	Autohelm Speed
Windset	Autohelm VMG and Wind
VHF	2007 Icom IC-M421
VHF handheld	yes
Autopilot	Raymarine ST6002 - 2018
Radar	Raymarine
Radar/GPS/plotter	Raymarine C70
AIS transceiver	Easy TRX 2 Class B
EPIRB	ACR Global Fix 406
Navigation lights	yes

EQUIPMENT

Fixed windscreen	yes
Sprayhood	2019
Cockpit cover	yes
Window cover	For deckhatches



HALLBERG RASSY 36 MKII

Cockpit table	yes
Bathing platform	yes
Boarding ladder	stainless steel
Bow ladder	yes
Deck shower	yes
Anchor	CQR Plough
Anchor chain	55 mtr. - 8 mm
Anchor 2	Bruce
Anchor chain	5 mtr. + 30 mtr. Leadline
Windlass	electrical Lewmar
Outboard support	yes
Deck crane	manual - for outboard - 2017
Sea railing	wire
Grab rail (superstructure)	teak
Pushpit	yes
Pulpit	yes
Safety lines on deck	yes
Horn	electric
Radar reflector	yes
Fenders	yes
Mooring lines	yes
Spare parts	yes
Tools	yes
Radio-cd player	Pioneer
Cockpit speakers	yes
Speakers in salon	yes
Clock - barometer	yes
Fire extinguisher	yes

RIGGING

Rigging	sloop
---------	-------



HALLBERG RASSY 36 MKII

Standing rigging	wire
Brand mast	Seldén
Material mast	aluminium
Spreaders	2 pair
Mainsail	2007 Elvstrøm 320g/qm Hydra-Net
Mainsail cover	yes
Fully battened mainsail	yes
Jib III	2009 Hamel sails
Genoa	2016 Lee sails Crosscut 38 m ²
Genoa furler	yes
Gennaker	2010 Lee Sails 84m ²
Reefing System	quick-one-line-reefing 2 reefs
Backstay adjuster	mechanical
Boomvang	gasspring
Genoa sheetwinches	2x Lewmar 48
Halyard winches	2x Lewmar 16 on mast
Reefing winch	1x Lewmar 8
Spi-pole	aluminium
Isolated backstay	yes



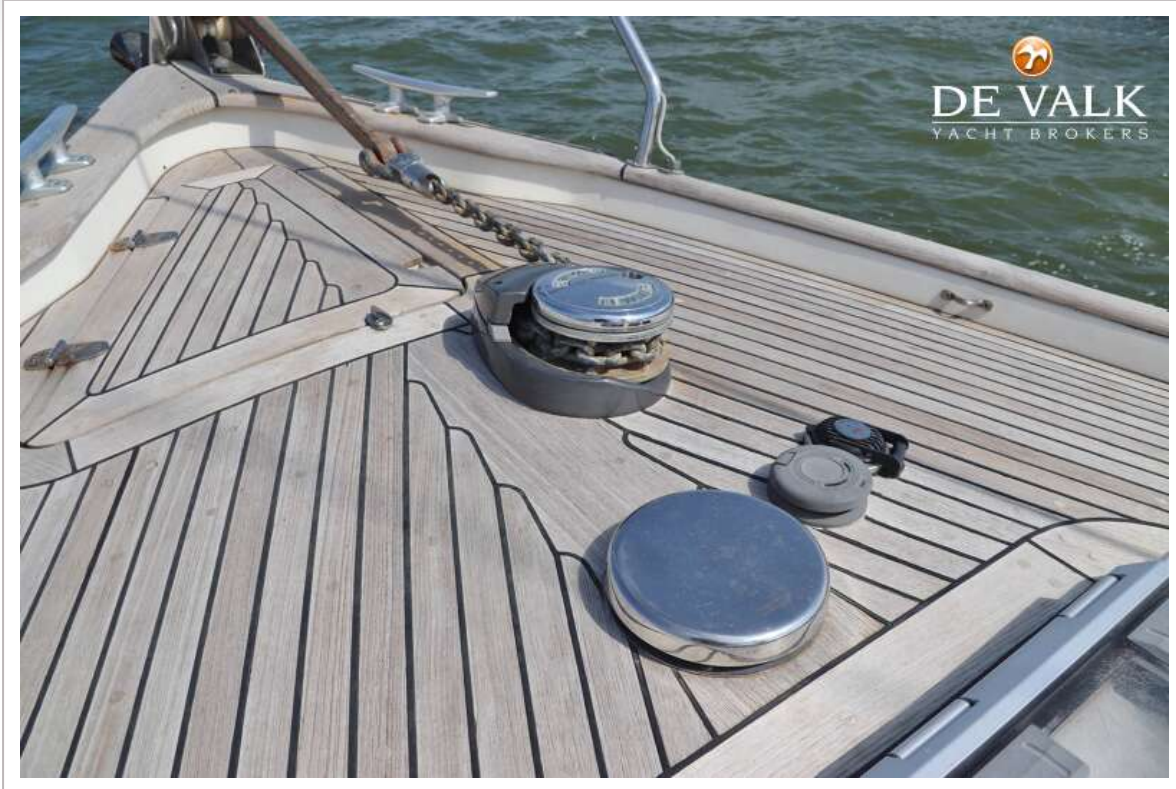
HALLBERG RASSY 36 MKII



HALLBERG RASSY 36 MKII



HALLBERG RASSY 36 MKII



HALLBERG RASSY 36 MKII



HALLBERG RASSY 36 MKII



HALLBERG RASSY 36 MKII



HALLBERG RASSY 36 MKII



HALLBERG RASSY 36 MKII



HALLBERG RASSY 36 MKII



HALLBERG RASSY 36 MKII



HALLBERG RASSY 36 MKII



HALLBERG RASSY 36 MKII



HALLBERG RASSY 36 MKII



HALLBERG RASSY 36 MKII



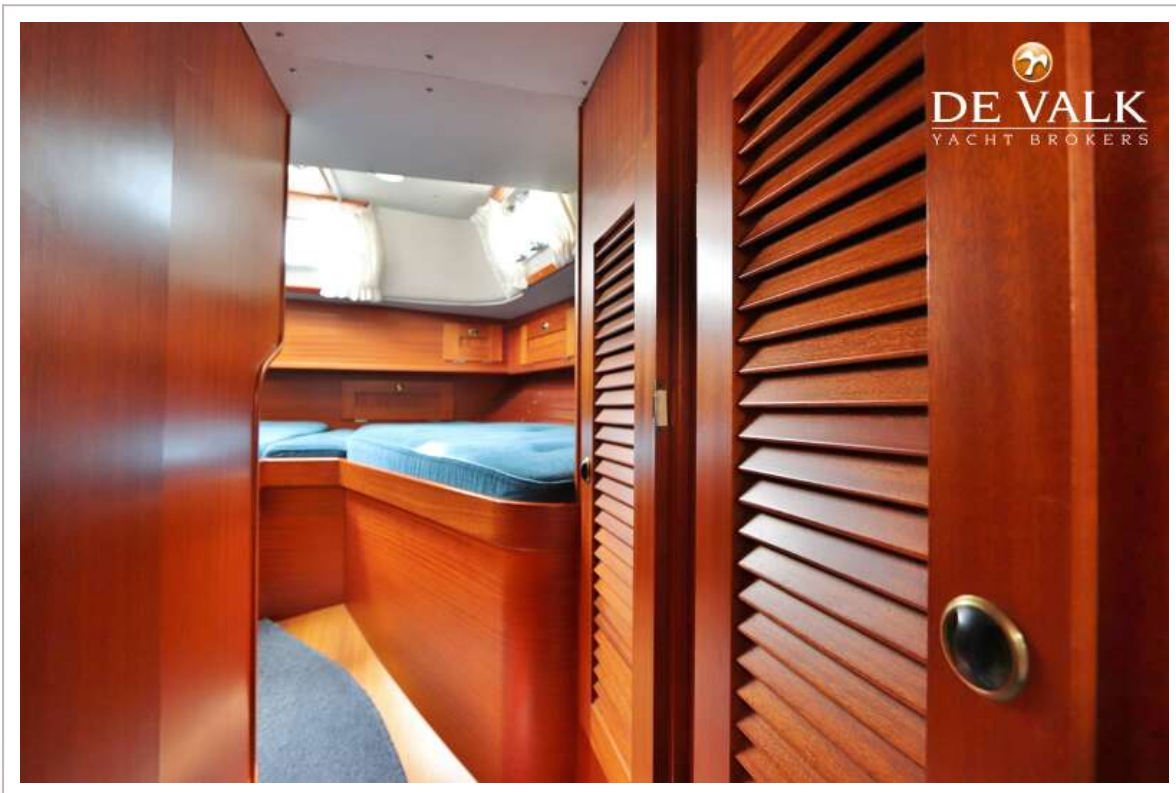
HALLBERG RASSY 36 MKII



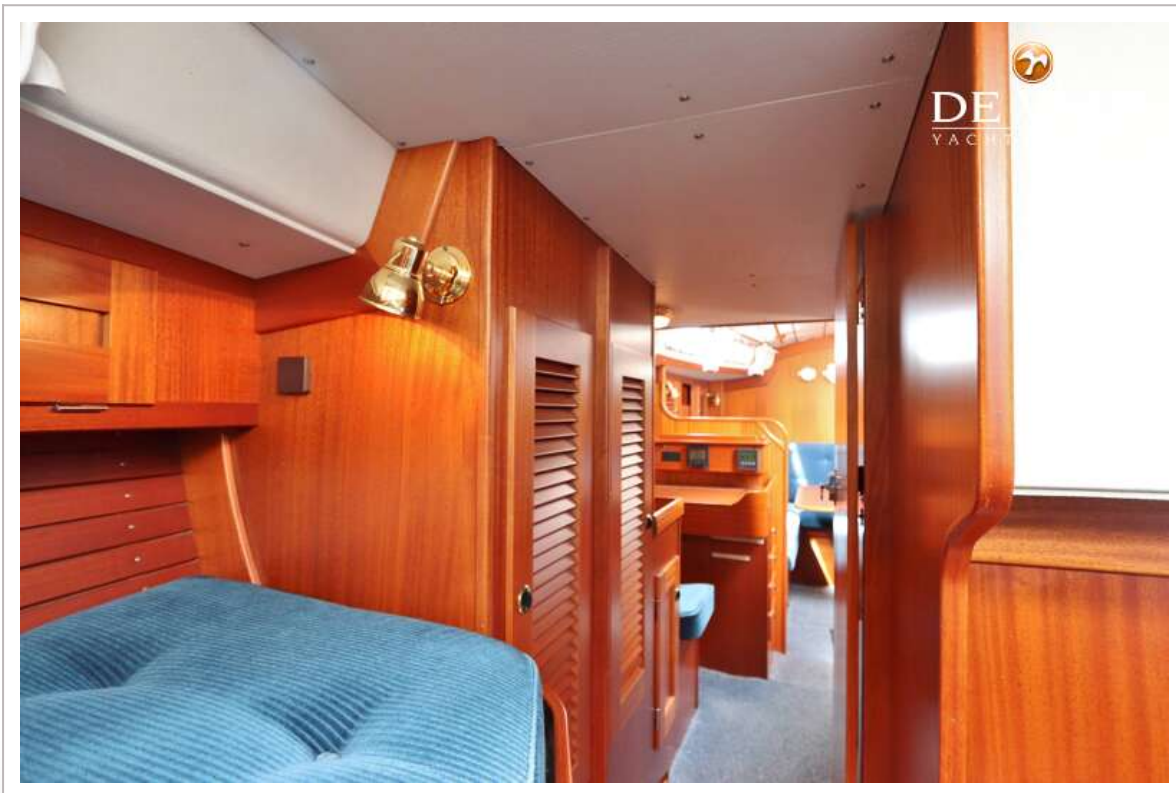
HALLBERG RASSY 36 MKII



HALLBERG RASSY 36 MKII



HALLBERG RASSY 36 MKII



HALLBERG RASSY 36 MKII

