



DE VALK
YACHT BROKERS



SEA RAY 455 SEDAN BRIDGE



DE VALK
YACHT BROKERS

SEA RAY 455 SEDAN BRIDGE

BROKER'S COMMENTS

Beautifully maintained and well equipped Sea Ray 455 Sedan Bridge named "Horizon". The "Horizon" offers an extremely spacious comfortable accommodation with a reversible air conditioning, Webasto heating, Fusion audio system, in short, an ideal motor yacht for longer vacations. On the engine side this Sea Ray 455 Sedan Bridge with its two strong and reliable Cummins diesel engines also does very well, the "Horizon" can deliver very spectacular performances.

Jochem Heijermans

SPECIFICATIONS

Dimensions	13.84 x 4.27 x 1.27 (m)	Builder	Sea Ray
Built	2005	Cabins	2
Material	GRP	Berths	6
Engine(s)	2 x Cummins 480 CE diesel	Hp/Kw	2 x 446.00 (hp), 327.81 (kw)
Asking price	€ 249.500 (VAT Paid)	Lying	elsewhere / Not at sales office

CONTACT

Sales office	De Valk Belgium	Telephone	+3258680218
Address	1401 PT Nieuwpoort Belgium	E-mail	belgium@devalk.nl

DISCLAIMER

These particulars are given in good faith as supplied but cannot be guaranteed.



SEA RAY 455 SEDAN BRIDGE

GENERAL

Model	SEA RAY 455 SEDAN BRIDGE
Type	motor yacht
LOA (m)	13,84
Beam (m)	4,27
Draft (m)	1,27
Headroom (m)	2,00
Year built	2005
Builder	Sea Ray
Country	U.S.A.
Displacement (t)	14
CE norm	B
Hull material	GRP
Hull colour	blue
Hull shape	deep-V
Superstructure material	GRP
Rubbing strake	aluminum
Deck material	GRP
Deck finish	non-skid moulded in
Superstructure deck finish	non-skid moulded in
Cockpit deck finish	non-skid moulded in
Window frame	aluminium
Window material	tempered glass
Deckhatch	yes
Portholes	aluminium
Flybridge	yes
Flybridge cockpit cover	yes
Flybridge suncover	yes
Radar arch	non collapsible
Fuel tank (litre)	aluminium 660
Fuel tank 2 (litre)	aluminium 660



SEA RAY 455 SEDAN BRIDGE

Level indicator (fuel tank)	yes
Freshwater tank (litre)	450
Level indicator (freshwater)	yes
Wheel steering	hydraulic
Flybridge helm position	hydraulic

ACCOMMODATION

Cabins	2
Berths	6
Floor	carpet
Open cockpit	yes
Saloon	yes
Headroom saloon (m)	2.00
Heating	diesel ducted hot air Webasto Airtop EVO
Air-conditioning	reverse cycle airco
Dinette to convert into berth	Folding sofa
Sliding door to cockpit	yes
Galley	yes
Countertop	granite
Sink	GRP
Cooker	ceramic
Extractor	yes
Microwave/oven combi	LG
Fridge	yes
Freezer	yes
Hot water system	220V + engine
Water pressure system	electrical
Coffee maker	yes
Owners cabin	French bed
Bed length (m)	2.00 x 1.40
Wardrobe	hanging/drawers/shelves



SEA RAY 455 SEDAN BRIDGE

Bathroom	en suite
Toilet	en suite
Toilet system	electric
Wash basin	in the bathroom
Shower	en suite
Guest cabin 1	twin single (or double)
Wardrobe	drawers and shelves

MACHINERY

No of engines	2
Make	Cummins
Type	480 CE
HP	446
kW	327,81
Fuel	diesel
Year installed	2005
Maximum speed (kn)	22
Cruising speed (kn)	27
Engine hours	575
Engine cooling system	freshwater heat exchanger
Drive	shaft
Engine controls	electrical
Gearbox	hydraulic ZF280 - 1 A
Bowthruster	electric Vetus
Sternthruster	Vetus
Exhaust	watercooled
Propeller type	fixed
Propeller shaft material	stainless steel
Shaft lubrication	water
Electric bilge pump	yes
Bilge alarm	yes



SEA RAY 455 SEDAN BRIDGE

Electrical installation	12V/220V
Generator	silent separator Onan Marine 6Kva
Batteries	yes
Start battery	2x
Service battery	3x
Battery monitor	yes
Battery charger/inverter	Victron 12V/3000W/120Ah
Shorepower	with cable
Trimtabs	yes

NAVIGATION

Compass	yes
Compass on flybridge	yes
Multi control display	Mercury Smartcraft
Depth sounder	Mercury Smartcraft
Log	yes
Repeater	Dubbel on flybridge
VHF	Raymarine
Autopilot	Raymarine ST7001 Smart Pilot
Rudder angle indicator	Raymarine ST7001 Smart Pilot
Radar/GPS/plotter	Raymarine E80
Camera	Engineroom, flybridge, aftedeck
Navigation lights	yes
Searchlight	yes

EQUIPMENT

Fixed windscreen	yes
Bimini	yes
Window cover	yes
Cockpit cushions	yes
Cockpit table	yes



SEA RAY 455 SEDAN BRIDGE

Cockpit chairs	yes
Bathing platform	yes
Boarding ladder	stainless steel
Transom door	yes
Deck shower	W+C
Anchor	
Windlass	electrical
Capstan	yes
Davits	stainless steel
Davits controls	manual
Sea railing	stainless steel
Grab rail (superstructure)	stainless steel
Pushpit	yes
Pulpit	yes
Wiper	2x
Horn	
Radar reflector	yes
Fenders	yes
Mooring lines	yes
Alarm system	yes
TV	Samsung + ownerscabin
TV receiver	Glomex
iPod connection	yes
Surround Sound System	Fusion
Sub-woofer	yes
Cockpit speakers	yes
Speakers in salon	yes
Speakers in cabin	yes
Clock - barometer	yes
Fire extinguisher	yes



SEA RAY 455 SEDAN BRIDGE



SEA RAY 455 SEDAN BRIDGE



SEA RAY 455 SEDAN BRIDGE



SEA RAY 455 SEDAN BRIDGE



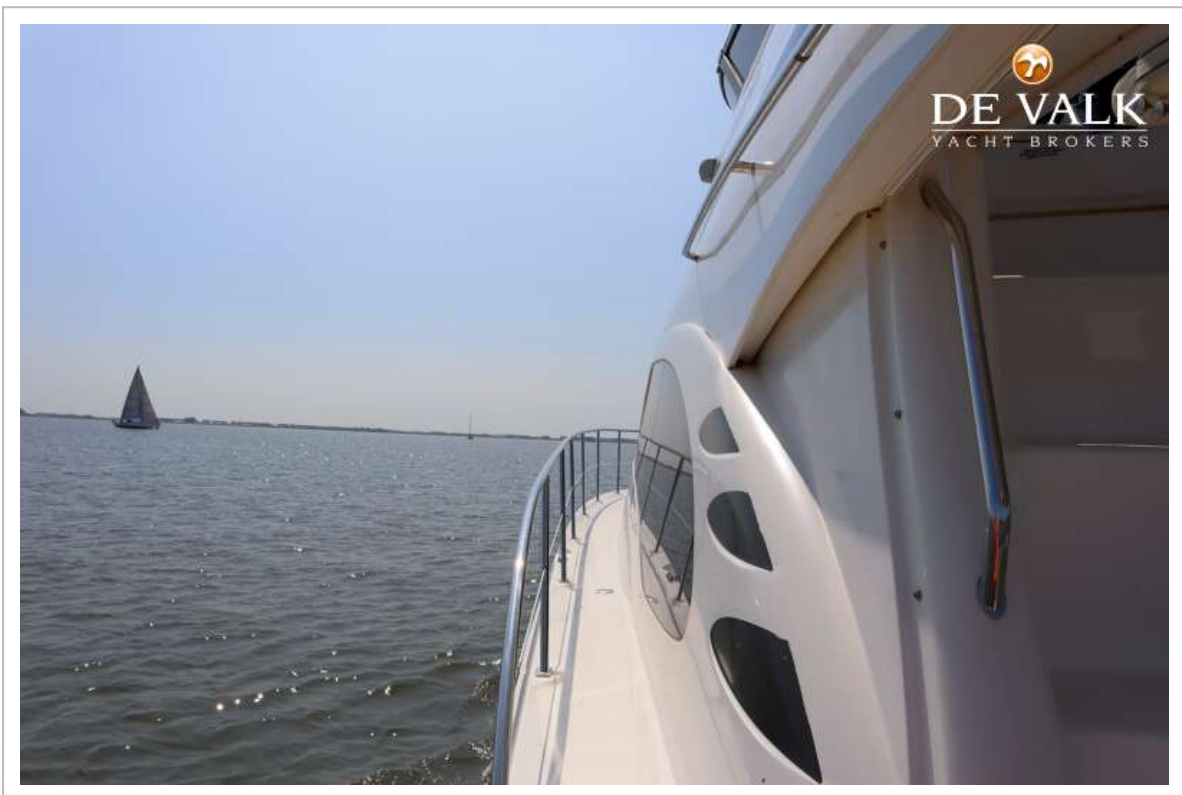
SEA RAY 455 SEDAN BRIDGE



SEA RAY 455 SEDAN BRIDGE



SEA RAY 455 SEDAN BRIDGE



SEA RAY 455 SEDAN BRIDGE



SEA RAY 455 SEDAN BRIDGE



SEA RAY 455 SEDAN BRIDGE



SEA RAY 455 SEDAN BRIDGE



SEA RAY 455 SEDAN BRIDGE



SEA RAY 455 SEDAN BRIDGE



SEA RAY 455 SEDAN BRIDGE



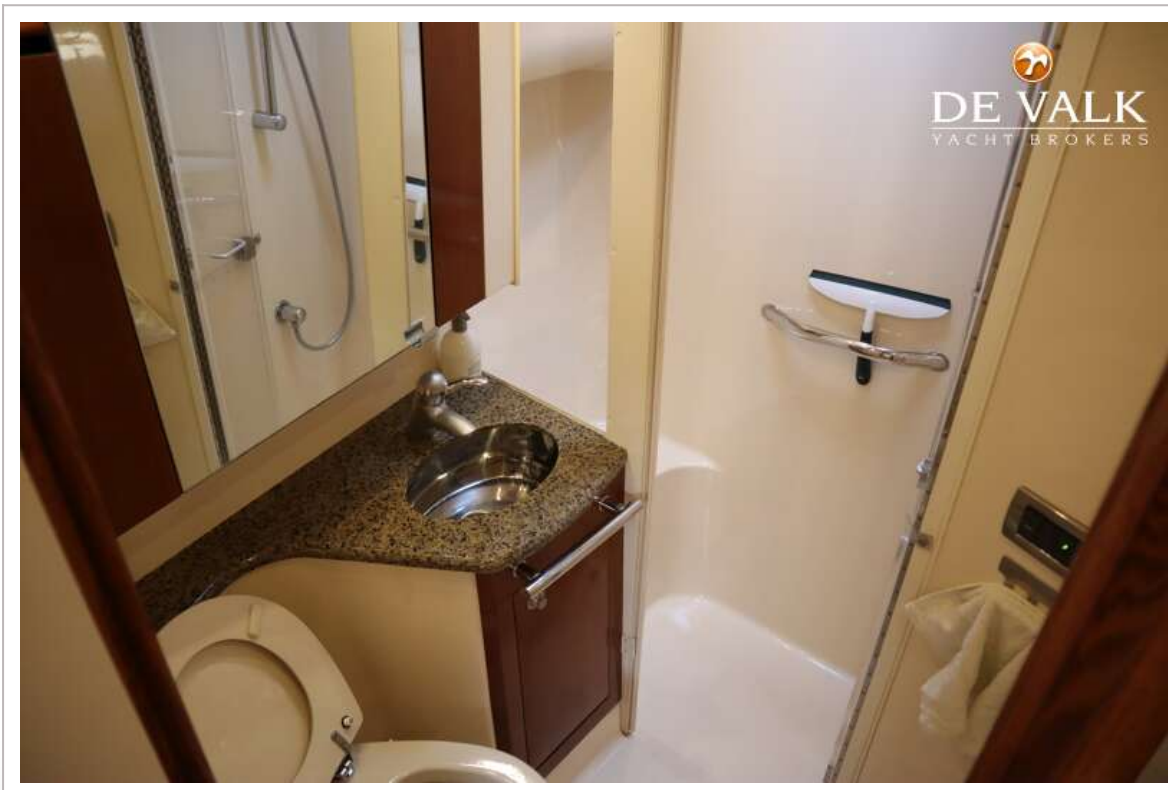
SEA RAY 455 SEDAN BRIDGE



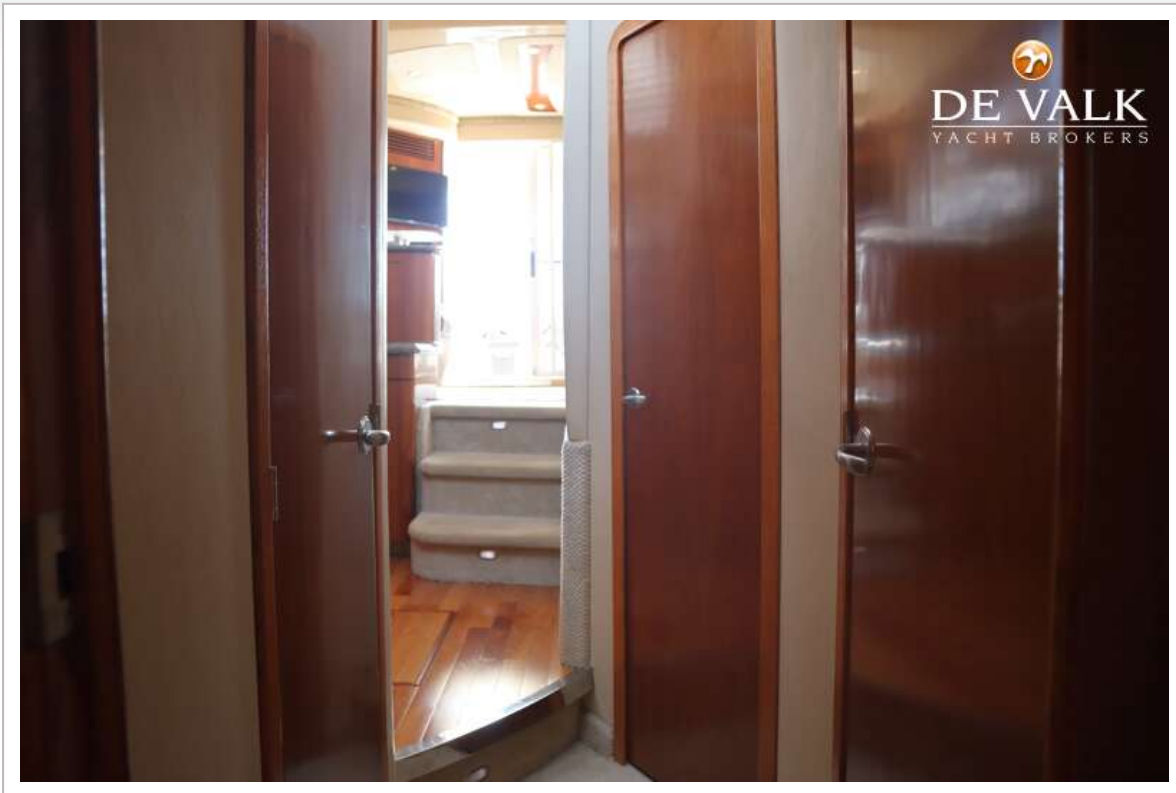
SEA RAY 455 SEDAN BRIDGE



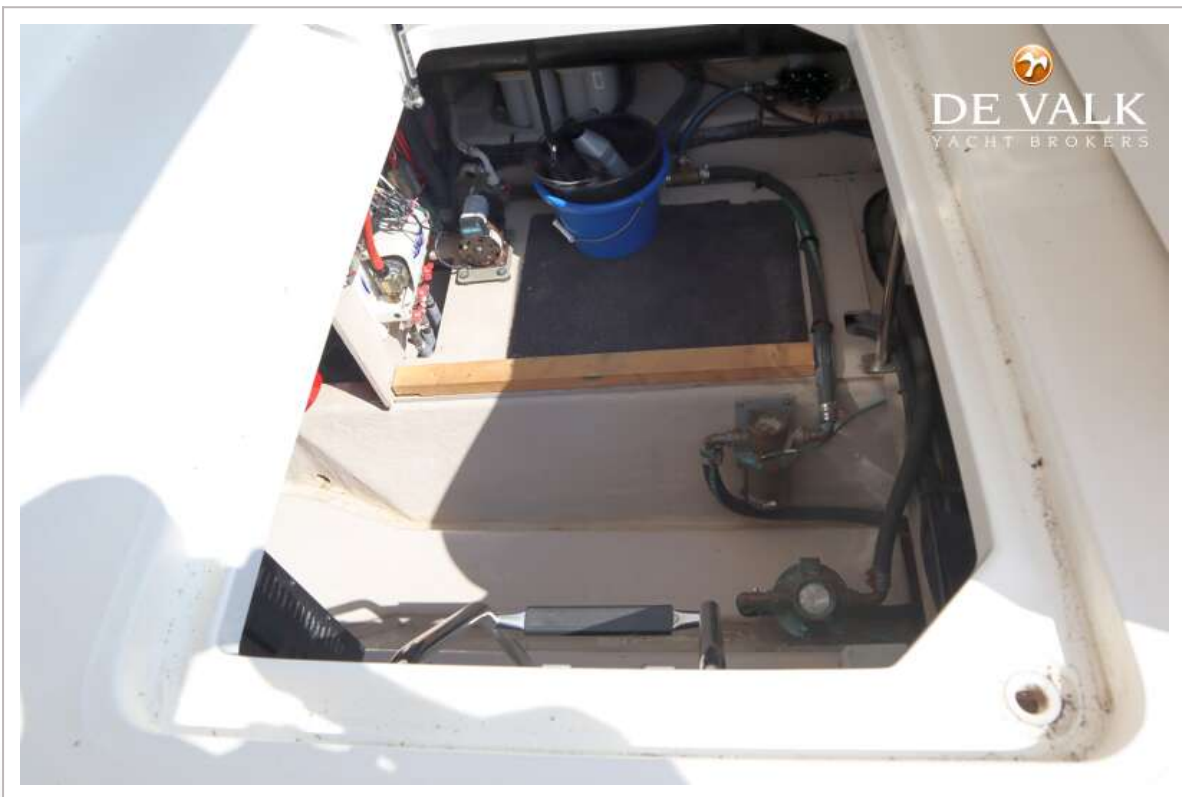
SEA RAY 455 SEDAN BRIDGE



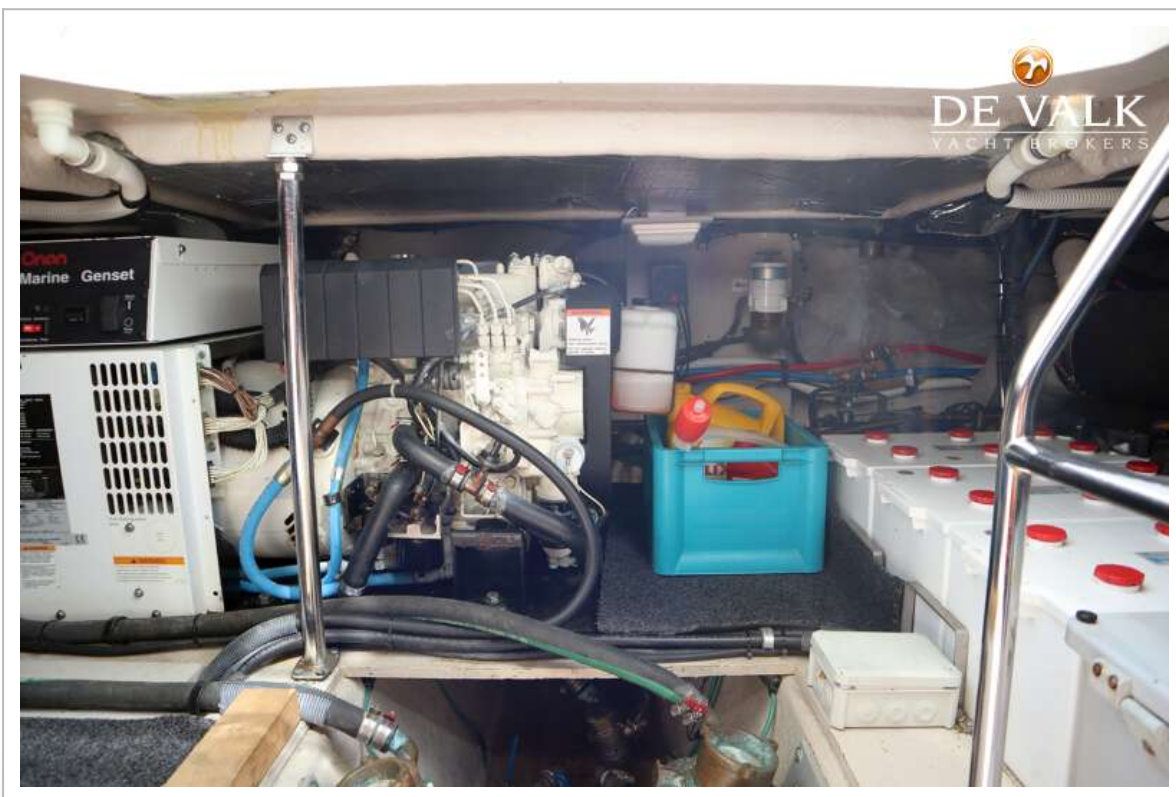
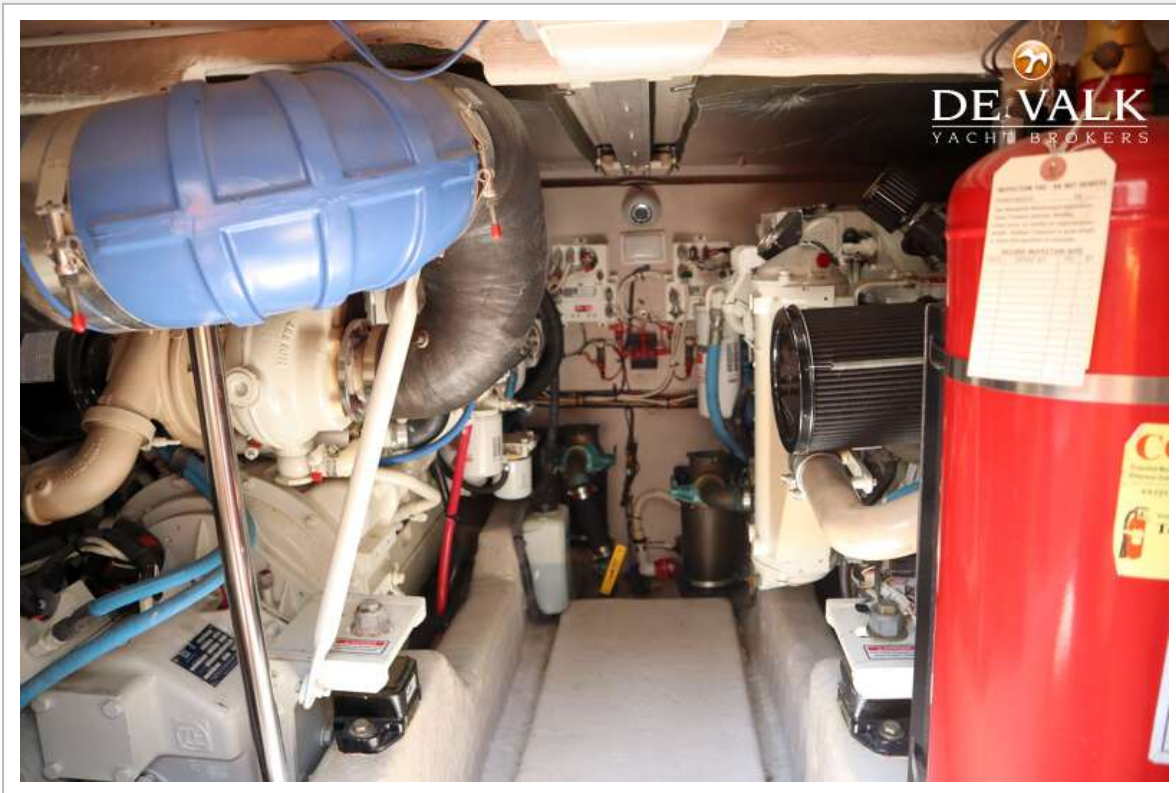
SEA RAY 455 SEDAN BRIDGE



SEA RAY 455 SEDAN BRIDGE



SEA RAY 455 SEDAN BRIDGE



SEA RAY 455 SEDAN BRIDGE



SEA RAY 455 SEDAN BRIDGE

