



DE VALK
YACHT BROKERS



ONE OFF LUXE KOMPIER SPITSGATKOTTER 1650



DE VALK
YACHT BROKERS

ONE OFF LUXE KOMPIER SPITSGATKOTTER 1650

BROKER'S COMMENTS

This beautiful One Off Kompier Kotter 16.50 "Rosephine" is very solid, overcomplete and finished in all luxury. This beautiful motor yacht is well maintained and has recently undergone an extensive refit. The ship has largely new glazing, a preventive overhauled hydraulic bow thruster, electric cooking and bowthruster remote controled, new kitchen worktop and new upholstery. The entire exterior has been painted. The vessel is equipped with two reliable John Deere engines and two Northern Light generators with very few operating hours.

Mark Hesselmans

SPECIFICATIONS

| | | | |
|---------------------|----------------------------|----------------|------------------------------|
| Dimensions | 16.50 x 4.90 x 1.60 (m) | Builder | Kompier Werf, Woerden |
| Built | 1993 | Cabins | 3 |
| Material | Steel | Berths | 7 |
| Engine(s) | 2 x John Deere 6068 diesel | Hp/Kw | 2 x 180.00 (hp), 132.48 (kw) |
| Asking price | € 545.000 (VAT Paid) | Lying | at sales office |

CONTACT

| | | | |
|---------------------|---|------------------|----------------------|
| Sales office | De Valk Loosdrecht | Telephone | +31 35 582 90 30 |
| Address | 't Breukeleveense Meentje 6 1231 LM Loosdrecht / Wijdemeren The Netherlands | E-mail | loosdrecht@devalk.nl |

DISCLAIMER

These particulars are given in good faith as supplied but cannot be guaranteed.



ONE OFF LUXE KOMPIER SPITSGATKOTTER 1650

GENERAL

| | |
|-------------------------------------|--|
| Model | ONE OFF LUXE KOMPIER SPITSGATKOTTER 1650 |
| Type | motor yacht |
| LOA (m) | 16,50 |
| Beam (m) | 4,90 |
| Draft (m) | 1,60 |
| Air draft min (m) | 3,45 |
| Headroom (m) | 1,96 |
| Year built | 1993 |
| Bullder | Kompier Werf, Woerden |
| Country | The Netherlands |
| Designer | Behage |
| Displacement (t) | 40 |
| Hull material | steel |
| Hull colour | white |
| Hull shape | round-bilged |
| Keel type | box keel |
| Superstructure material | steel |
| Rubbing strake | stainless steel |
| Deck material | steel |
| Deck finish | non-skid paint |
| Superstructure deck finish | non-skid paint |
| Antifouling (year) | 2023 Epifanes Foul Away |
| Window frame | polymer 2022 |
| Window material | double glazing 2022 |
| Portholes | aluminium Hora |
| Insulation | glasswool |
| Flybridge | yes |
| Radar arch | collapsible |
| Fuel tank (litre) | stainless steel 2000 L |
| Fuel tank 2 (litre) | stainless steel 2000 L |
| Level indicator (fuel tank) | yes |
| Freshwater tank (litre) | stainless steel 2000 L |
| Level indicator (freshwater) | yes |
| Blackwater tank (litre) | steel 500 L |
| Blackwater tank extraction | pump |
| Wheel steering | hydraulic |
| Inside helm position | yes |
| Outside helm position | hydraulic |
| More info on paintwork | 2022/2023 De IJssel Double Coat |



ONE OFF LUXE KOMPIER SPITSGATKOTTER 1650

Extra info

Owner's comments Beautiful One Off Kompas Spitsgatkotter of 16.50m. The Rosephine was designed in 1993 by P.B. Behage Yacht Designer built at the renowned Kompas shipyard. The interior of the ship has been reduced to the flame. Everything is built with high quality materials and very well thought out. The client for the construction of this beautiful ship was an industrialist who was closely involved in the development and construction of the ship and left nothing to chance. Upon entering you will find a spacious sitting area and dining table. There is a spacious L-shaped kitchen with all conceivable kitchen appliances such as refrigerator with freezer, combi oven, induction plate with extractor hood, dishwasher and washing machine. Next to the kitchen is a cozy kitchen table with a corner sofa for 5 people where 1 stool can be placed. At the front of the boat is an impressive steering position from where the ship can be steered in complete comfort, even in bad weather. Via the beautiful fixed staircase you reach the lower deck where you will experience a sea of space. In the bow is a spacious owner's cabin, followed by a luxurious bathroom with a bubble bath, sink and electric toilet. The day toilet can be reached from the hallway. The second and third cabin can also be reached from this corridor. The second cabin has a luxurious bunk bed and the third cabin has a luxurious double bed with a desk. All cabins have enough built-in cupboards to store everything neatly. The second and third cabin have a passage to the second bathroom with a spacious shower, double sink and the third electric toilet on board. There is a spacious fly bridge where you can sit and sail in good weather. From the fly bridge you have a nice overview and you look over the reed collars and into the landscape where you sail past and you can enjoy the sun. This Kompas has wide gangways and a Portuguese bridge. The aft deck is covered so that you can walk or sit dry even in the rain or drizzle. The current owner liked to sit with guests on the spacious foredeck. Both on the fly bridge and on the foredeck you can enjoy a drink, after which a dinner can be enjoyed in all comfort. This ship is a second home on the water! With the ship you can make wonderful trips or use the ship for living on board. The ship can be sailed with two people. The ship has been built very thoughtfully, with no expense or effort spared. The most exclusive materials have been used. The propulsion takes place by two very solid and economical running 6068 John Deere engines with only 1100 hours on the counter. The two main engines also power the professional hydraulic system on tap. The steering of the ship works through the hydraulic system, which also drives the anchor winch and the hydraulic bow thruster. In addition to the rock-solid John Deere power sources for propulsion, the ship has two Northern Light generators (the small one with 130 hours and the large one with only 50 hours on the counter). A Kabola CV provides the heating and there is also air conditioning on board so that the ship can be used comfortably all year round. The Rosephine has had a complete refit in 2022/2023, so there will be no major maintenance on the agenda in the coming years and you can immediately start enjoying this ship. The entire paint job outside has been done. New windows with special insulated frames have been installed all around (ideal for use also in winter). The professional bow thruster has been preventively completely overhauled by the manufacturer who supplied it. There is also a beautiful new Neolith kitchen worktop with kitchen tap, a new dishwasher and a new fridge with freezer. The carpets and curtains have also been completely renewed. All engines were serviced in early 2023 and new heavy-duty Bosch starter batteries have been installed, making the ship ready for years of new adventure with you. In addition to the employees of De Valk, the current owner can tell you everything about this beautiful ship. He knows the ship down to the last detail and also knows which parties have been involved in the construction and maintenance of this ship. Everything has been done with the utmost care and attention as was also used by the client for the construction of this beautiful ship. The owner still has a lot of documentation about the ship in storage.



ONE OFF LUXE KOMPIER SPITSGATKOTTER 1650

ACCOMMODATION

| | |
|--------------------------------|------------------------------|
| Cabins | 3 |
| Berths | 7 |
| Interior | oak White wash |
| Floor | carpet 2023 |
| Open cockpit | yes |
| Pilot house | yes |
| Deck saloon | yes |
| Saloon | yes |
| Headroom saloon (m) | +/- 1,96 m |
| Heating | diesel ducted hot air Kabola |
| Air-conditioning | single cycle airco |
| Opening door to cockpit | Teak varnished |
| Galley | yes |
| Countertop | Neolith 2023 |
| Sink | stainless steel |
| Microwave/oven combi | Bauknecht |
| Fridge | 2023 Isotherm |
| Freezer | In Fridge |
| Hot water system | on central heating Kabola |
| Water pressure system | electrical |
| Dishwasher | 2023 |
| Owners cabin | French bed |
| Bed length (m) | 2,00 x 1,90 |
| Wardrobe | hanging and shelves |
| Bathroom | en suite |
| Toilet | en suite |
| Toilet system | electric |
| Wash basin | in the bathroom |
| Bath tub | en suite |
| Jacuzzi | In the bathroom |



ONE OFF LUXE KOMPIER SPITSGATKOTTER 1650

| | |
|------------------------|-----------------|
| Guest cabin 1 | double bed |
| Bed length (m) | 2,00 x 1,95 |
| Wardrobe | shelves |
| Bathroom | shared |
| Toilet | shared |
| Toilet system | electric |
| Wash basin | in the bathroom |
| Shower | shared |
| Guest cabin 2 | bunk bed |
| Bed length (m) | 1,95x1,05 |
| Wardrobe | shelves |
| Toilet | shared |
| Toilet system | electric |
| Wash basin | at the toilet |
| Washing machine | Candy |
| Flybridge | yes |

MACHINERY

| | |
|------------------------------|---|
| No of engines | 2 |
| Make | John Deere |
| Type | 6068 |
| HP | 180 |
| kW | 132.48 |
| Fuel | diesel |
| Year installed | 1993 |
| Year of overhaul | April 2023 both engines and generators serviced |
| Engine hours | 1127 & 1122 |
| Engine cooling system | hopper cooling |
| Drive | shaft |
| Shaft seal | yes |
| Engine controls | electrical |



ONE OFF LUXE KOMPIER SPITSGATKOTTER 1650

| | |
|----------------------------------|------------------------------|
| Gearbox | hydraulic |
| Bowthruster | hydraulic Overhauled in 2023 |
| Exhaust | dry |
| Propeller type | fixed |
| Propeller blades | 4 |
| Propeller shaft material | stainless steel |
| Shaft lubrication | oilbath |
| Electric bilge pump | Jabsco |
| Bilge alarm | yes |
| Electrical installation | 12/24/220 |
| Generator | Northern Light |
| Running hours generator | 50 |
| Generator 2 | Northern Light |
| Running hours generator 2 | 214 |
| Batteries | yes |
| Start battery | 2023 2x Bosch Heavy Duty |
| Service battery | 4x |
| Generator battery | 2x Bosch |
| Battery monitor | Mastervolt |
| Battery charger | 24/100 |
| Inverter | Mastervolt |
| Diode battery combiners | yes |
| Shorepower | with cable |

NAVIGATION

| | |
|-------------------------|------------------|
| Electric compass | Logic Combi |
| Depth sounder | Logic Combi |
| Log | Logic Combi |
| Windset | Logic Combi |
| VHF | Shipmate RS 8300 |
| Autopilot | VDO |



ONE OFF LUXE KOMPIER SPITSGATKOTTER 1650

| | |
|------------------------|-----|
| Rudder angle indicator | yes |
| Radar | yes |
| Navigation lights | yes |

EQUIPMENT

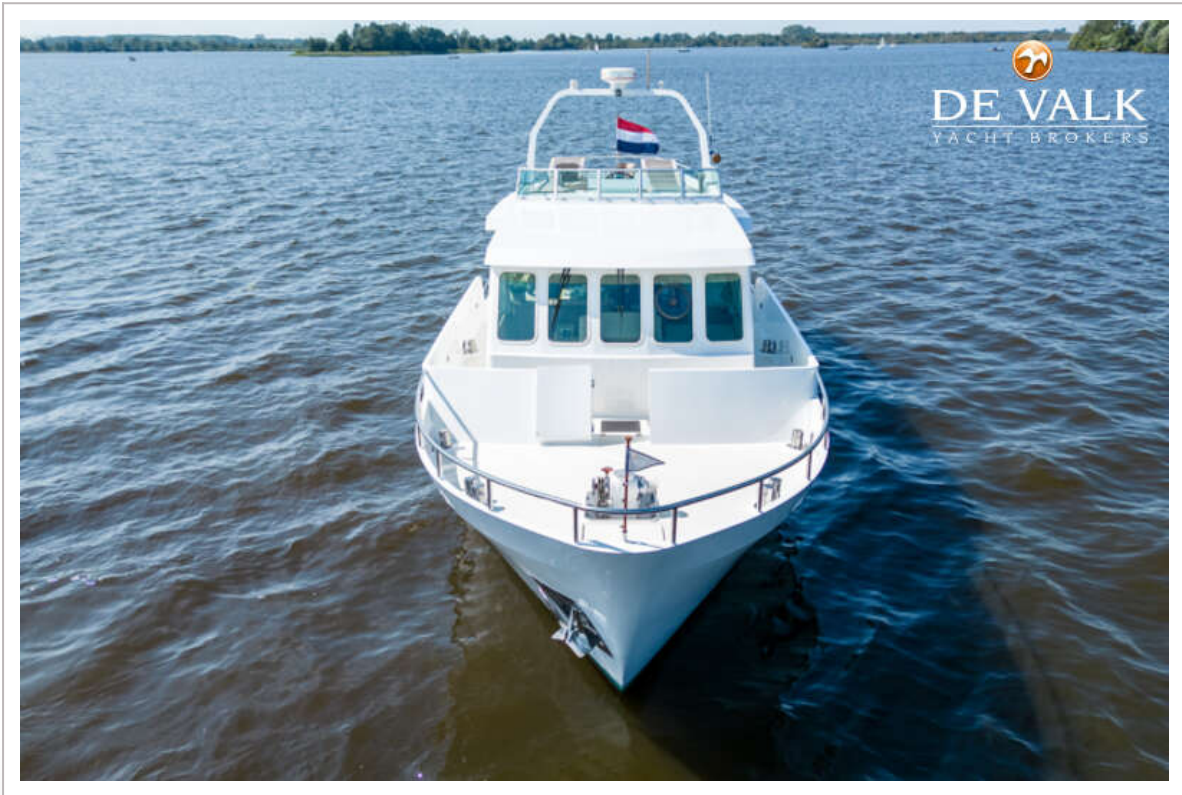
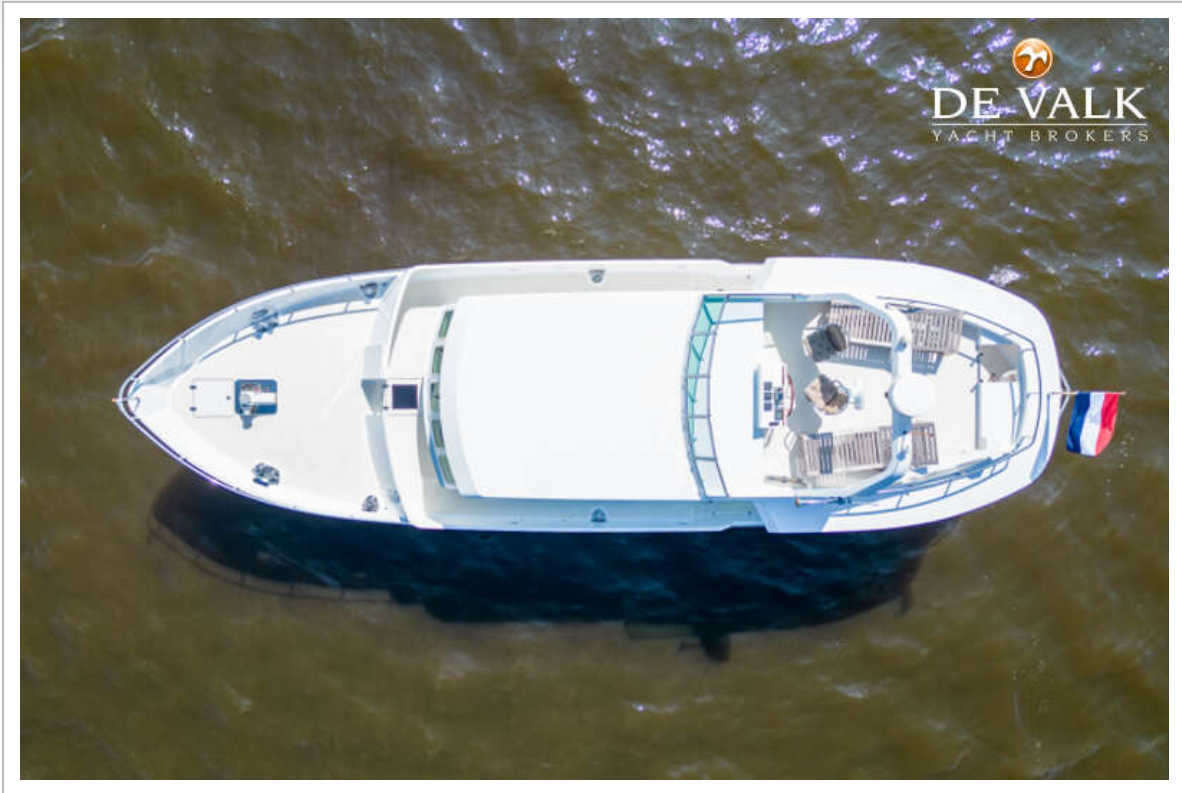
| | |
|----------------------------|------------------------|
| Cockpit table | yes |
| Cockpit chairs | yes |
| Anchor | yes |
| Anchor chain | yes |
| Windlass | electrical 24V |
| Deck wash | yes |
| Deck crane | electric Not Connected |
| Sea railing | stainless steel |
| Railing side opening gates | yes |
| Wiper | 3x electric |
| Clearview window | yes |
| Window heating | yes |
| Horn | air pressure |
| Horn cover | yes |
| Fenders | yes |
| Mooring lines | yes |
| TV | yes |



ONE OFF LUXE KOMPIER SPITSGATKOTTER 1650



ONE OFF LUXE KOMPIER SPITSGATKOTTER 1650



ONE OFF LUXE KOMPIER SPITSGATKOTTER 1650



ONE OFF LUXE KOMPIER SPITSGATKOTTER 1650



ONE OFF LUXE KOMPIER SPITSGATKOTTER 1650



ONE OFF LUXE KOMPIER SPITSGATKOTTER 1650



ONE OFF LUXE KOMPIER SPITSGATKOTTER 1650



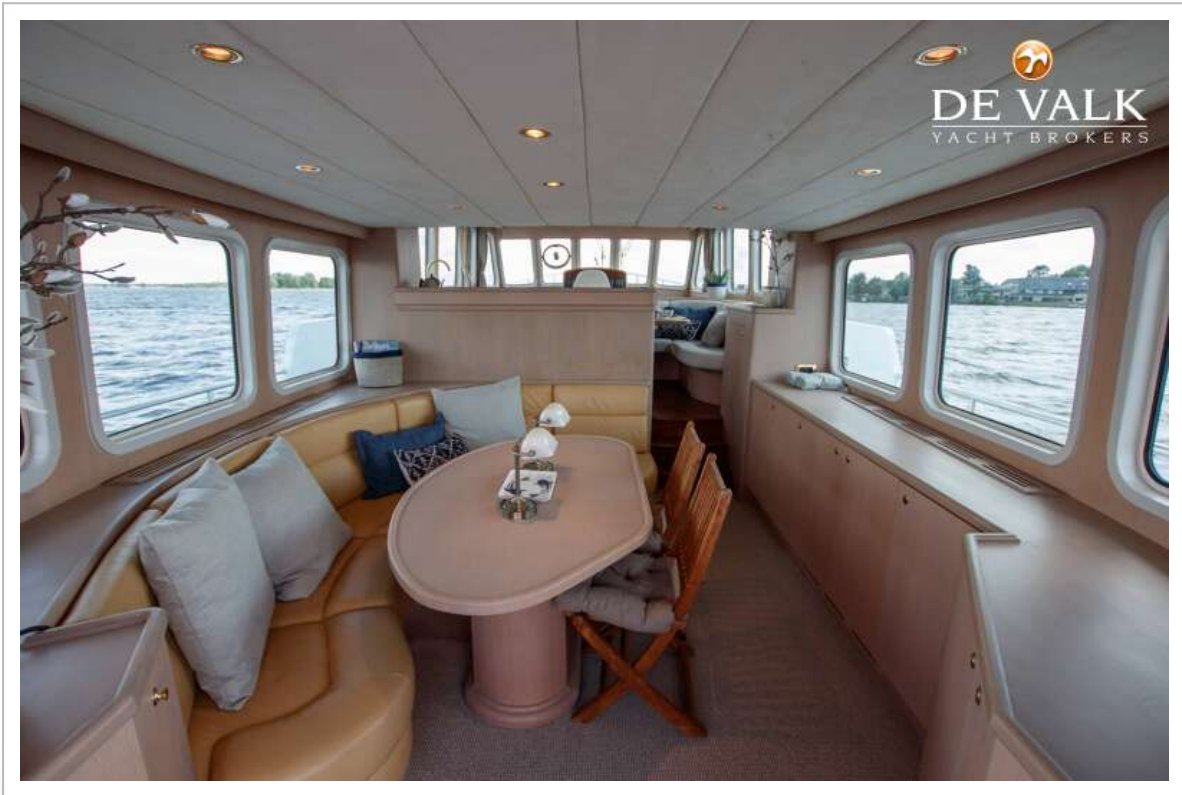
ONE OFF LUXE KOMPIER SPITSGATKOTTER 1650



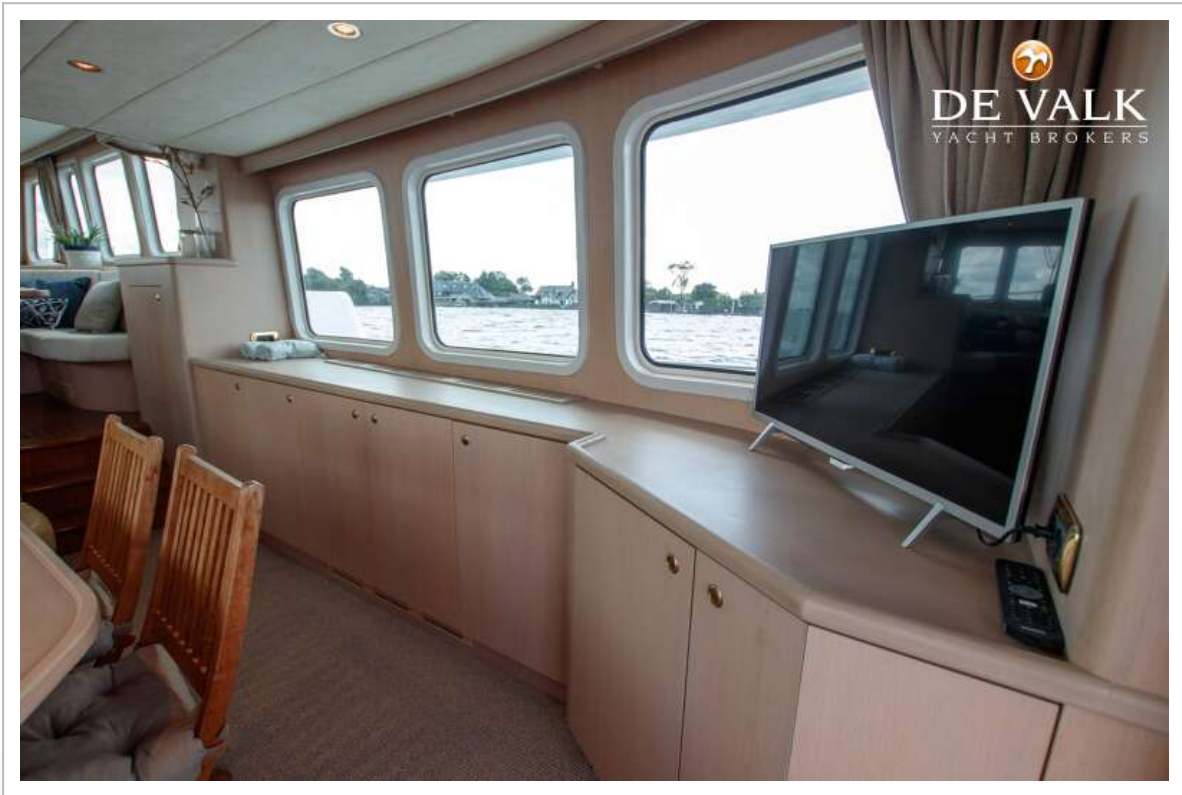
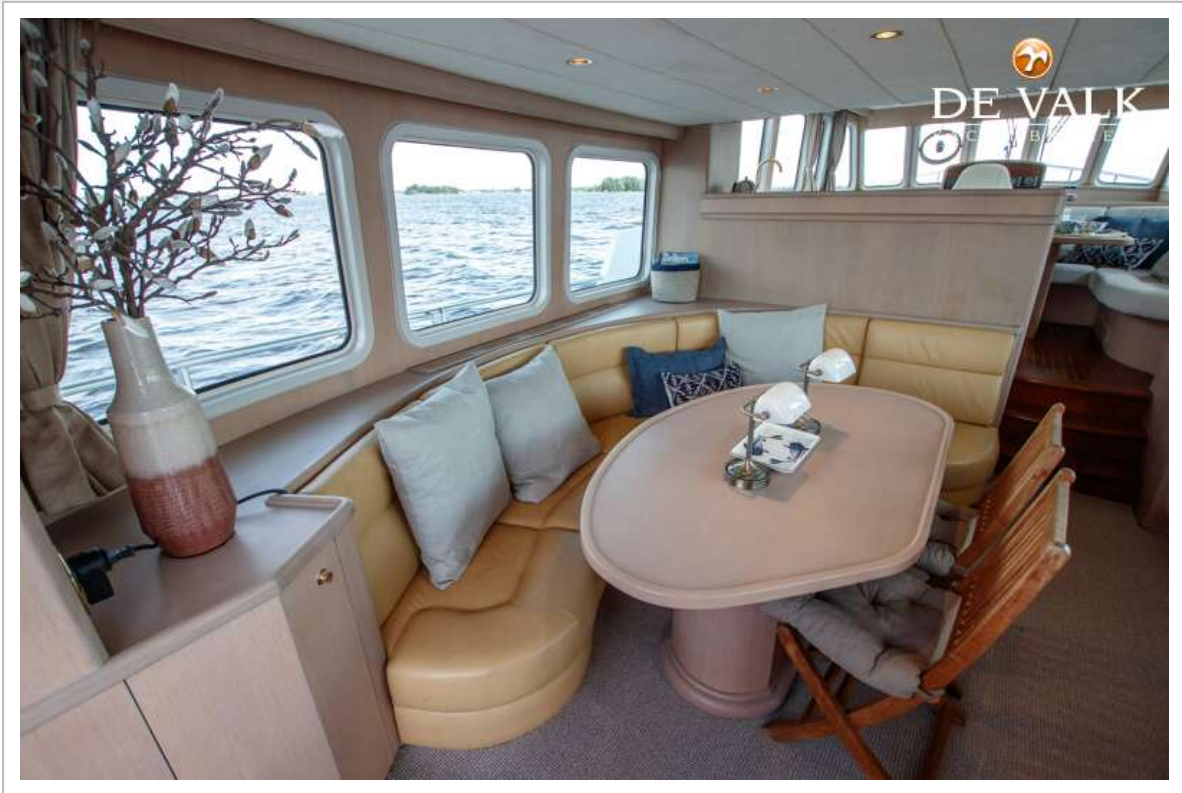
ONE OFF LUXE KOMPIER SPITSGATKOTTER 1650



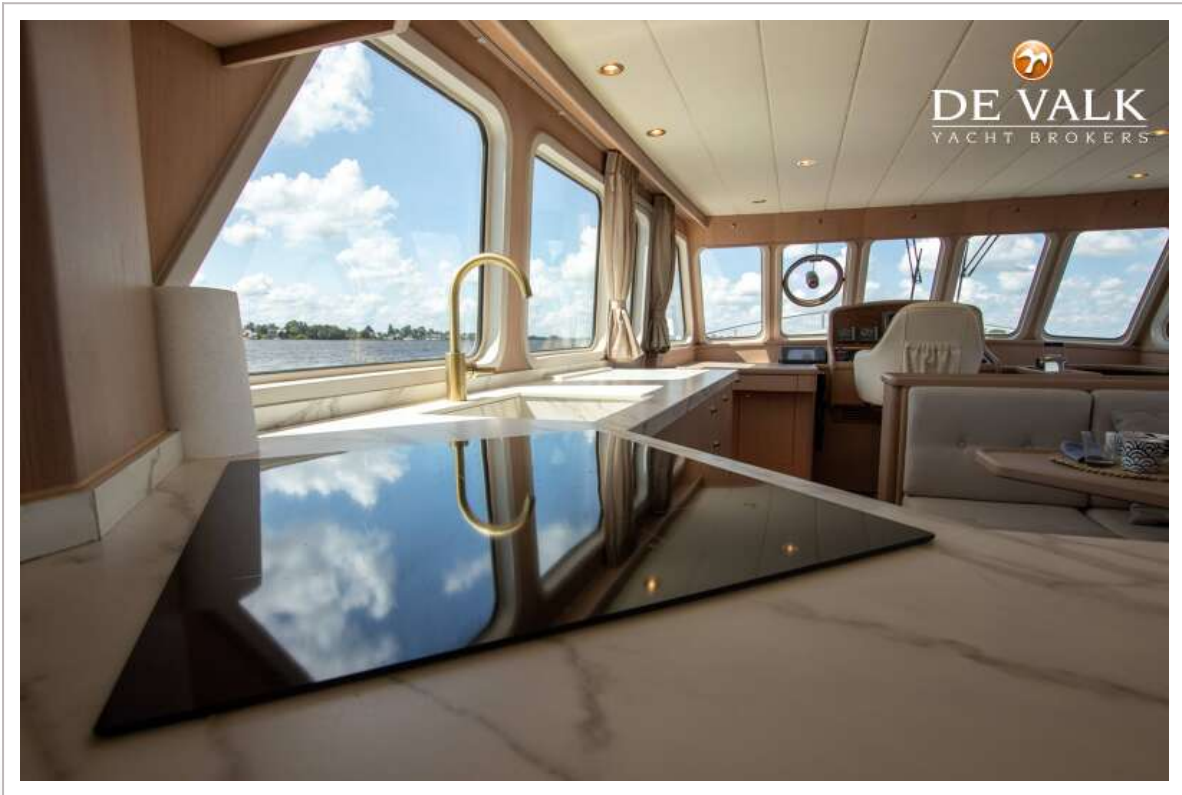
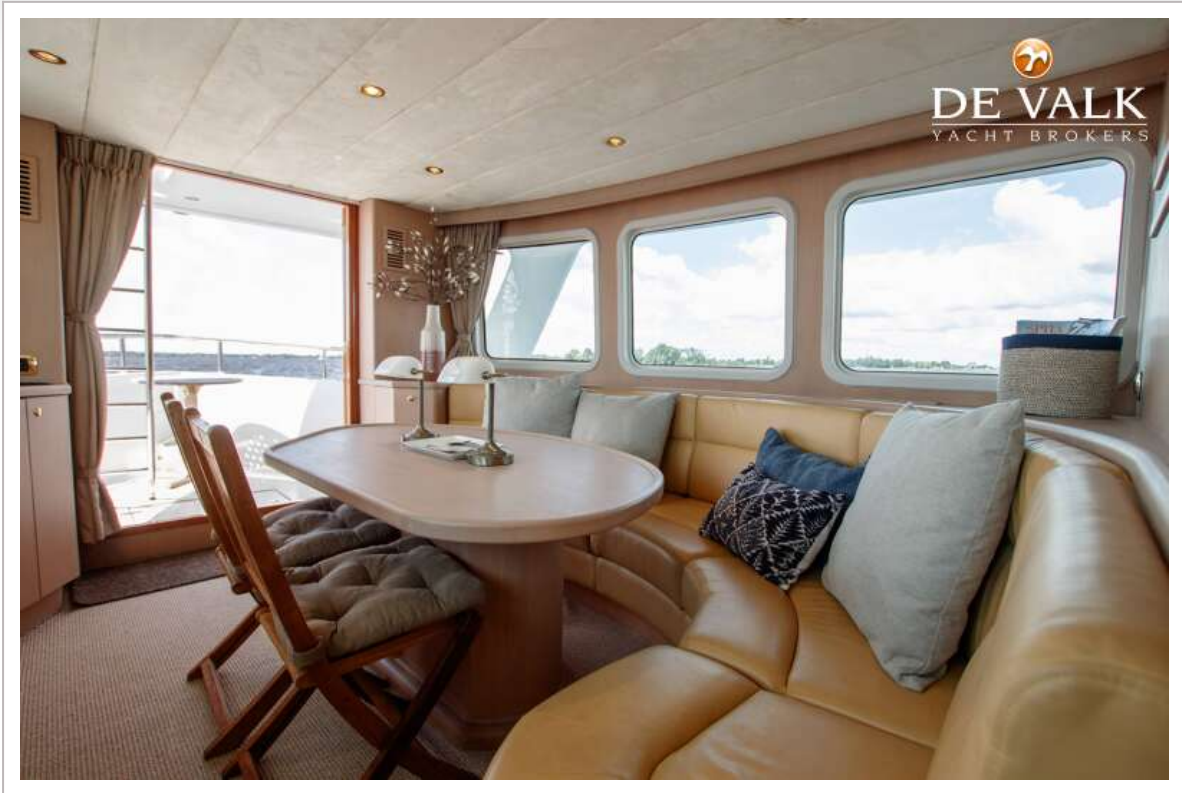
ONE OFF LUXE KOMPIER SPITSGATKOTTER 1650



ONE OFF LUXE KOMPIER SPITSGATKOTTER 1650



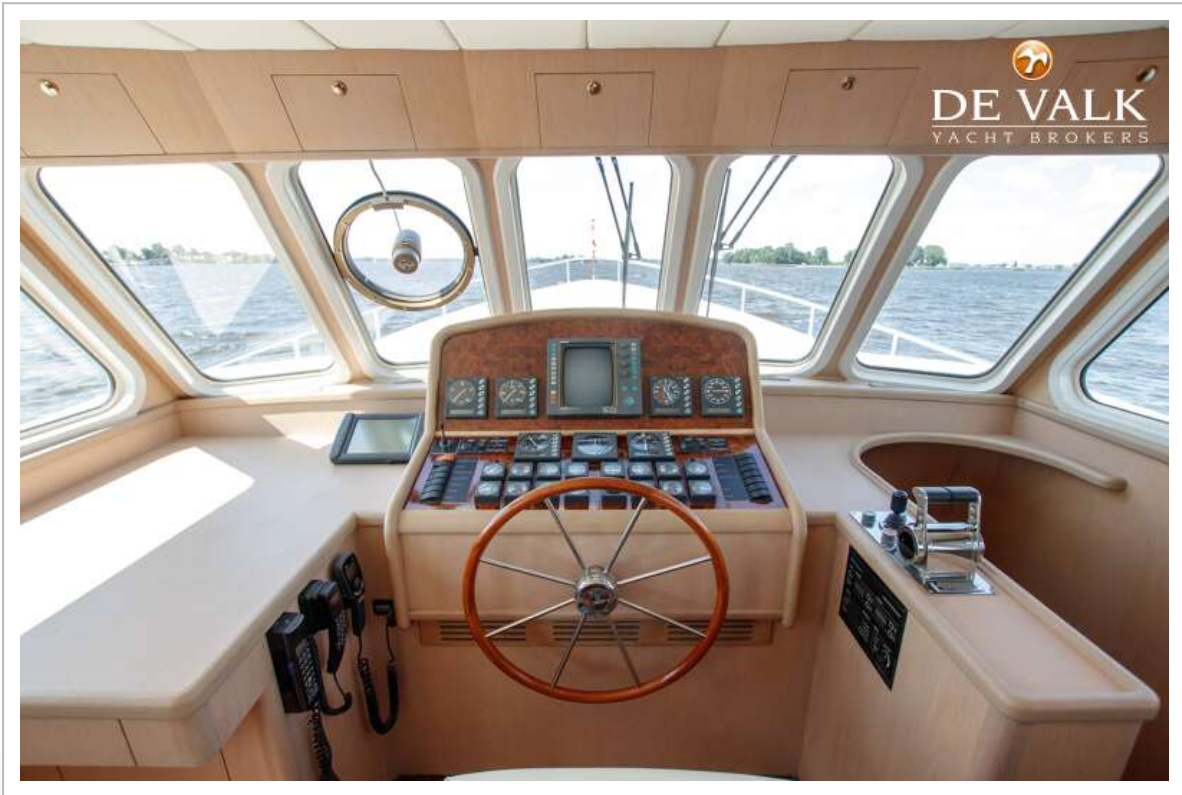
ONE OFF LUXE KOMPIER SPITSGATKOTTER 1650



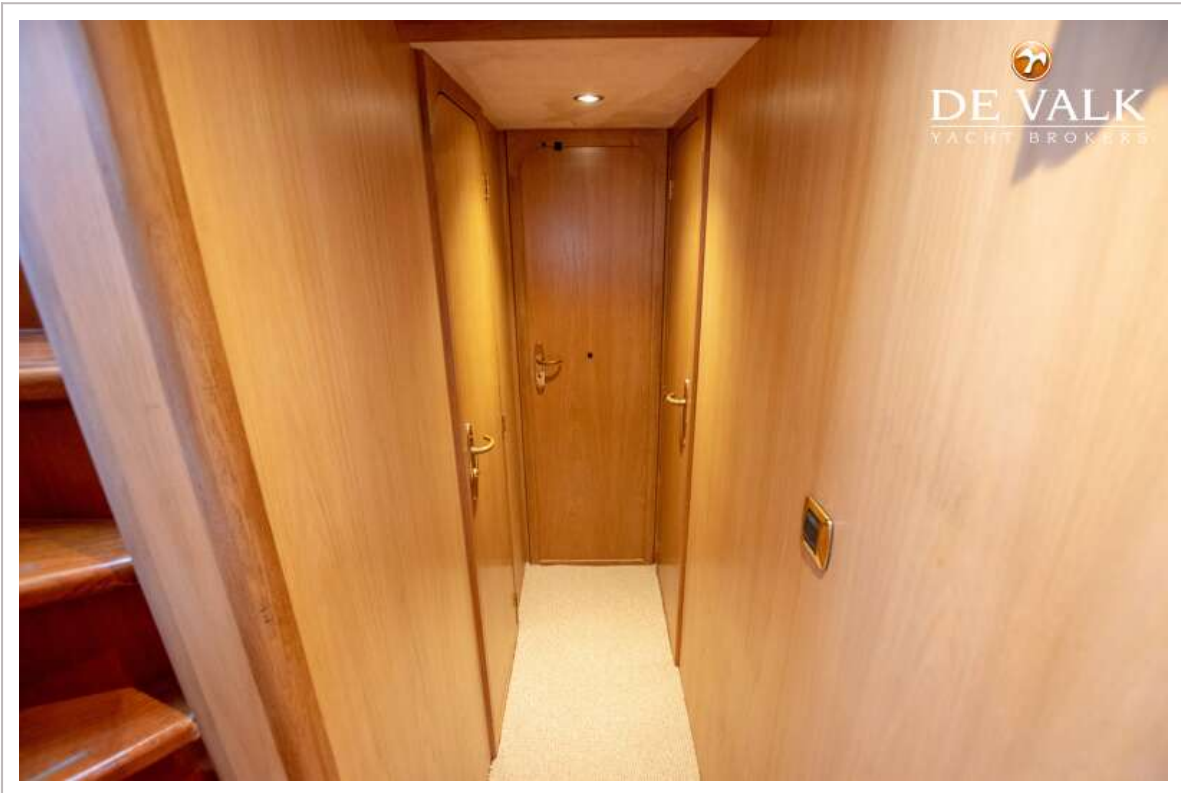
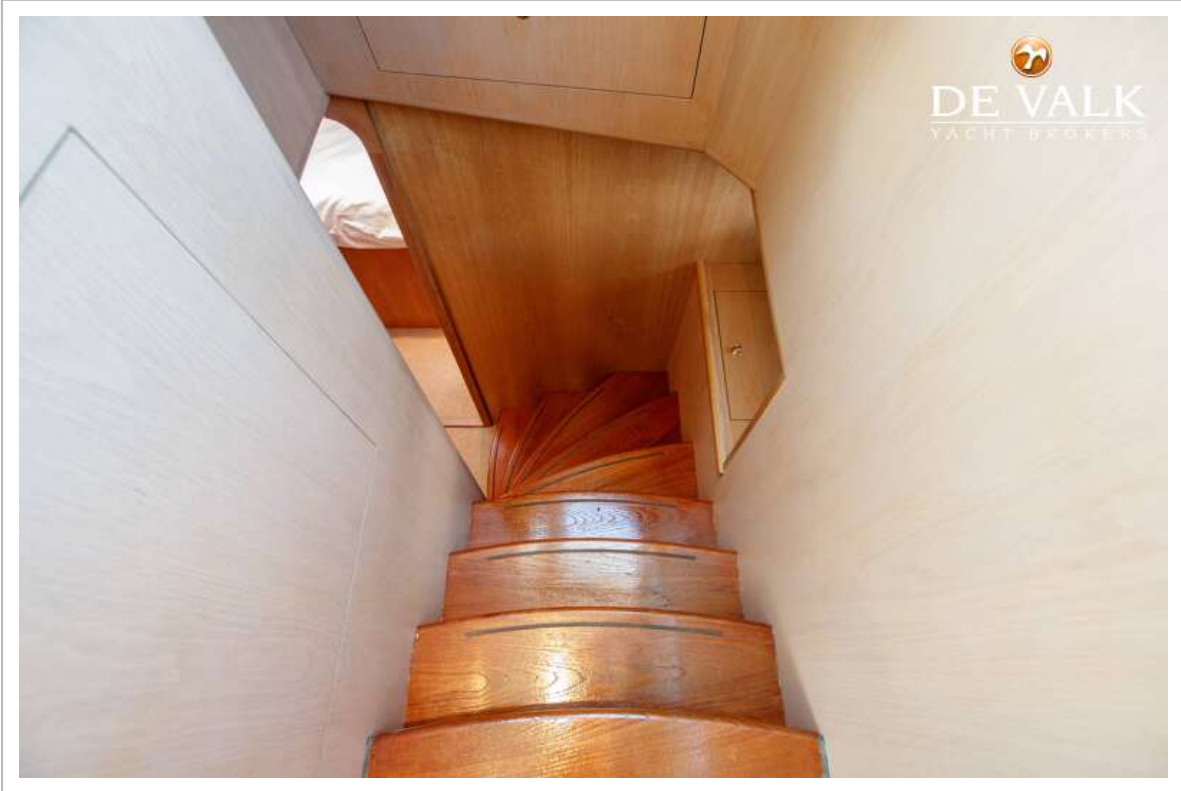
ONE OFF LUXE KOMPIER SPITSGATKOTTER 1650



ONE OFF LUXE KOMPIER SPITSGATKOTTER 1650



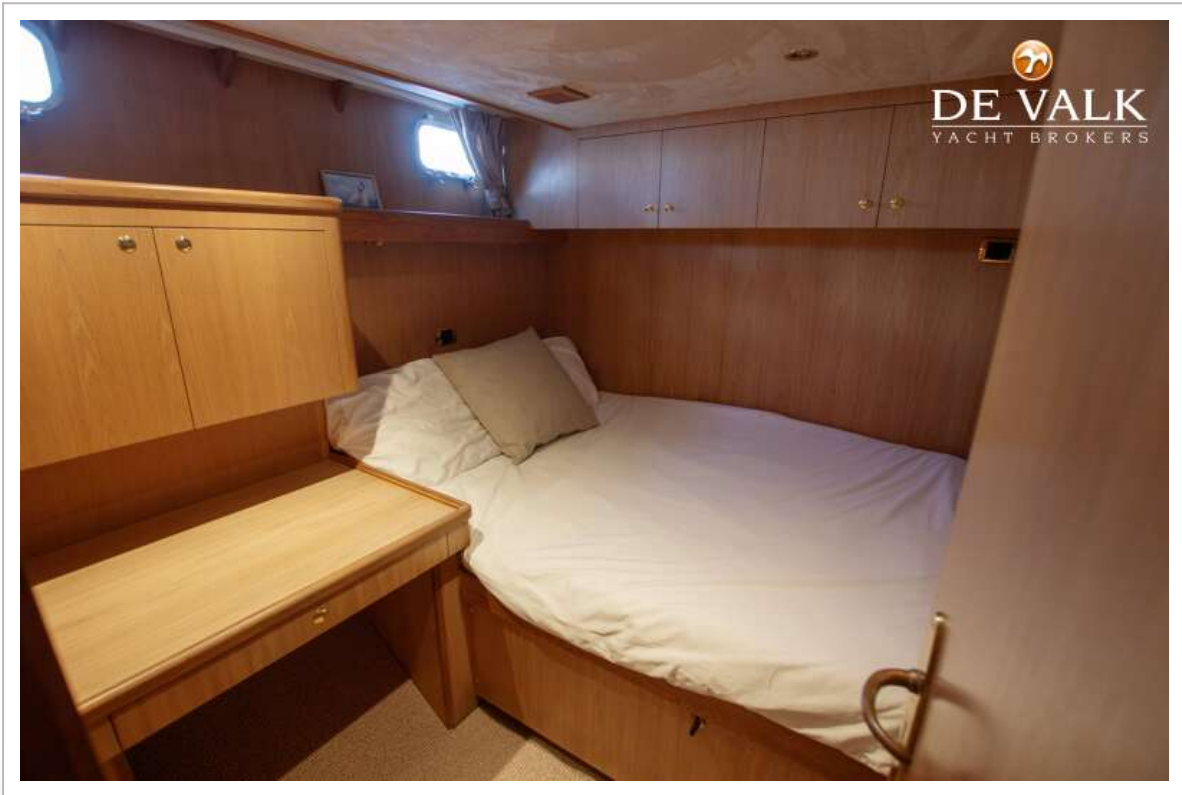
ONE OFF LUXE KOMPIER SPITSGATKOTTER 1650



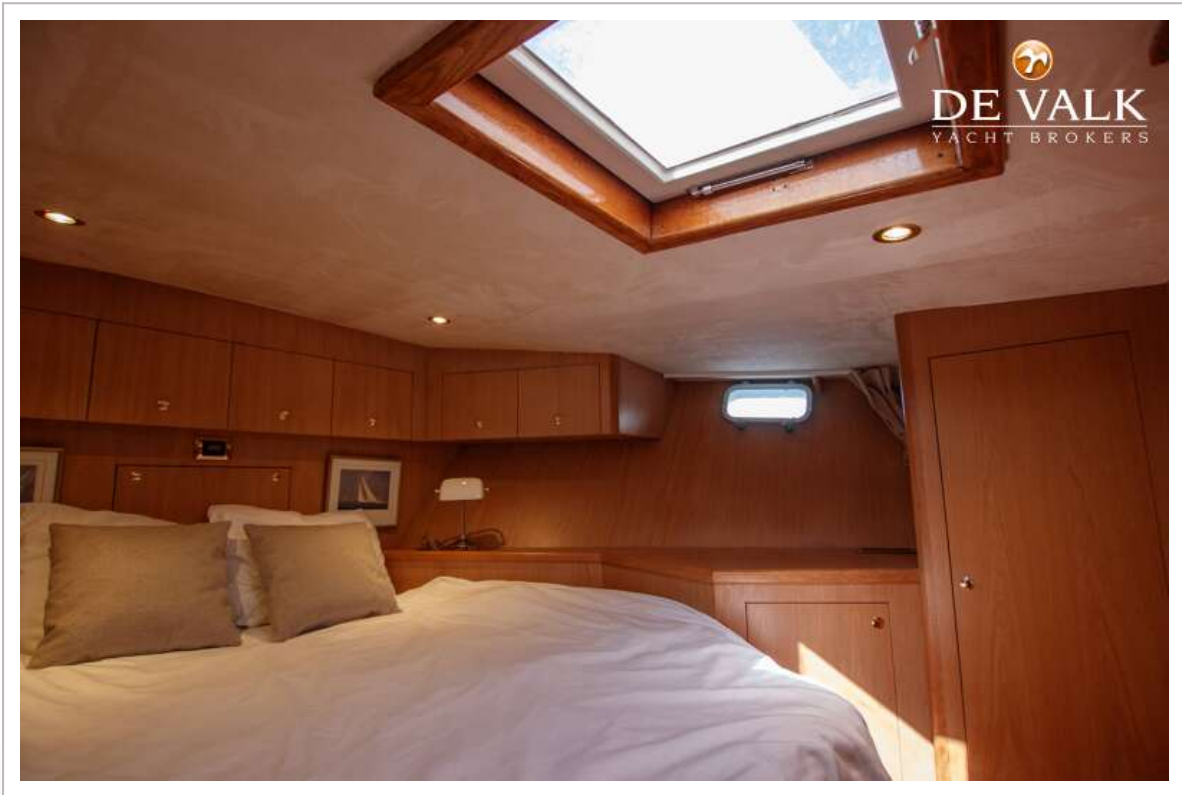
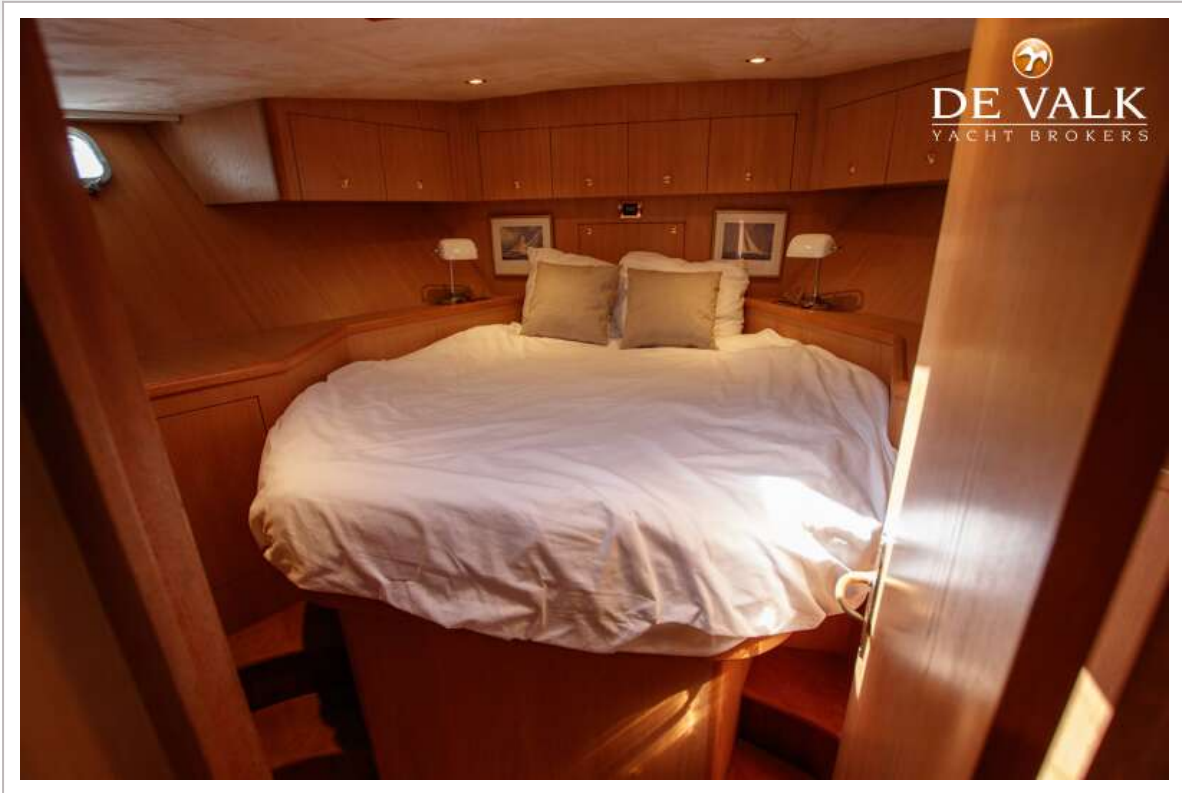
ONE OFF LUXE KOMPIER SPITSGATKOTTER 1650



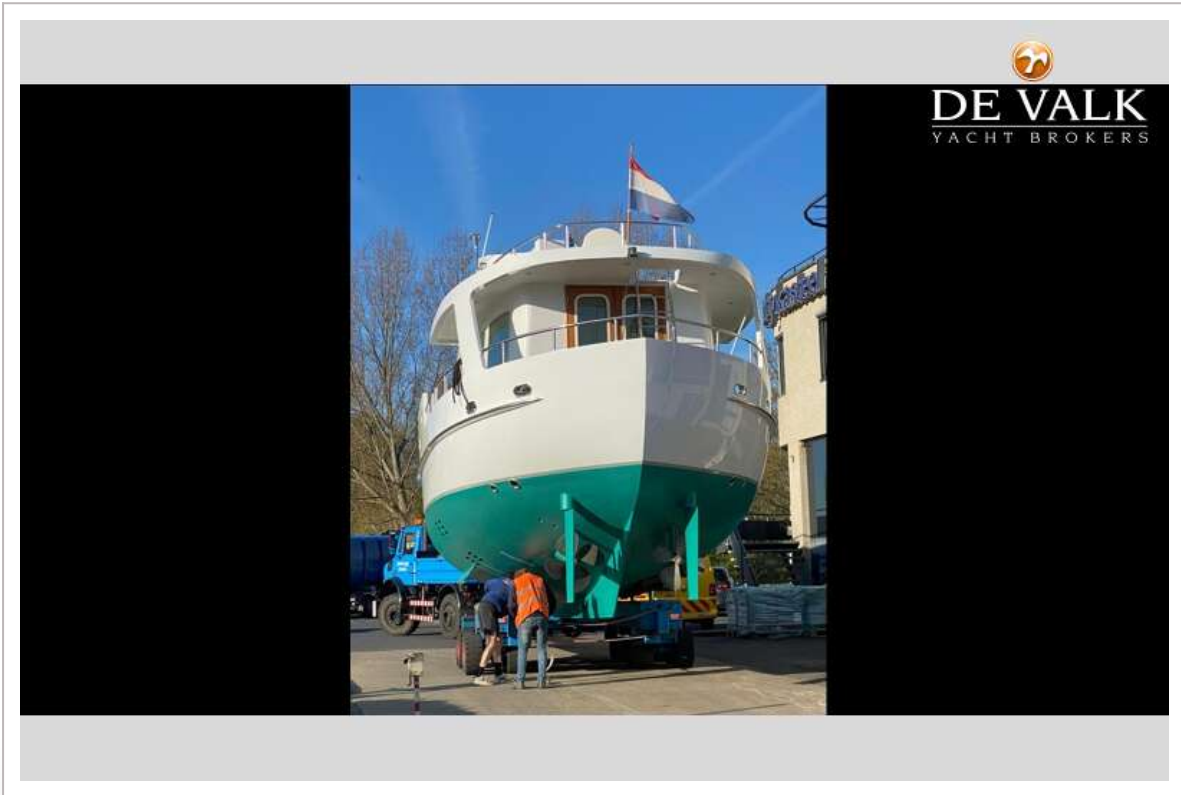
ONE OFF LUXE KOMPIER SPITSGATKOTTER 1650



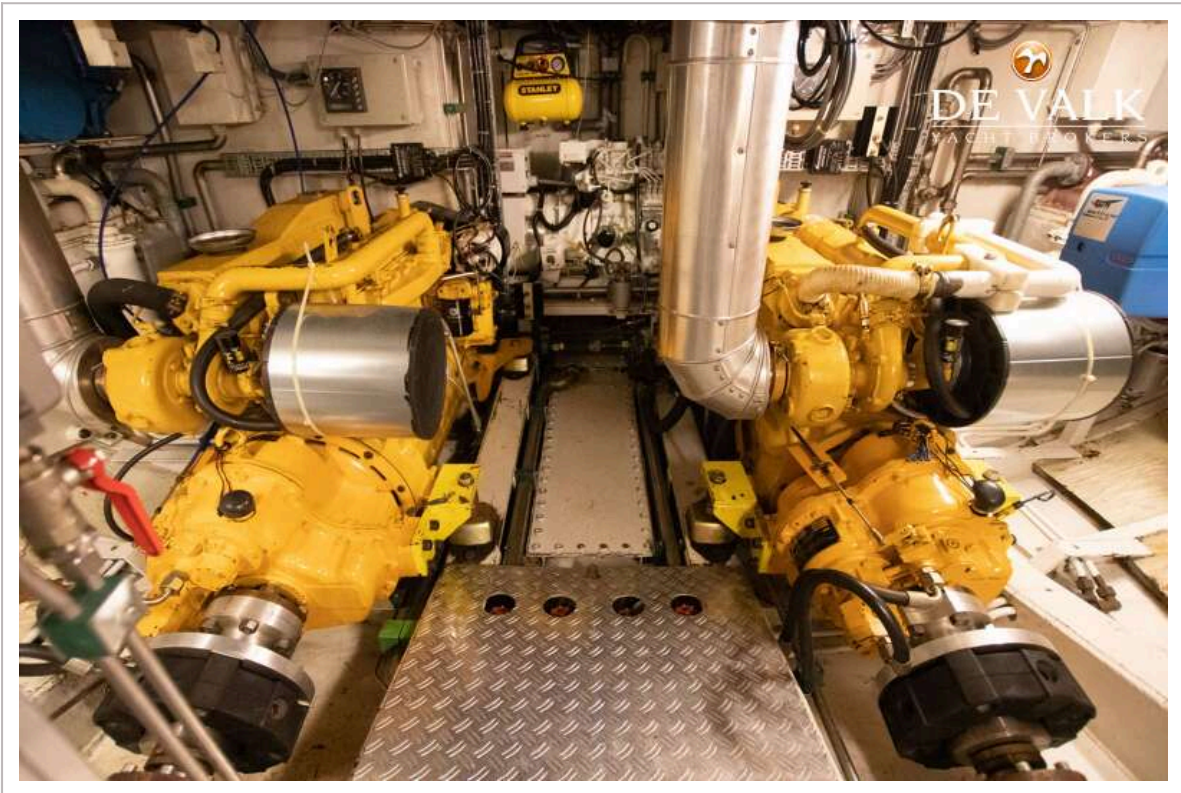
ONE OFF LUXE KOMPIER SPITSGATKOTTER 1650



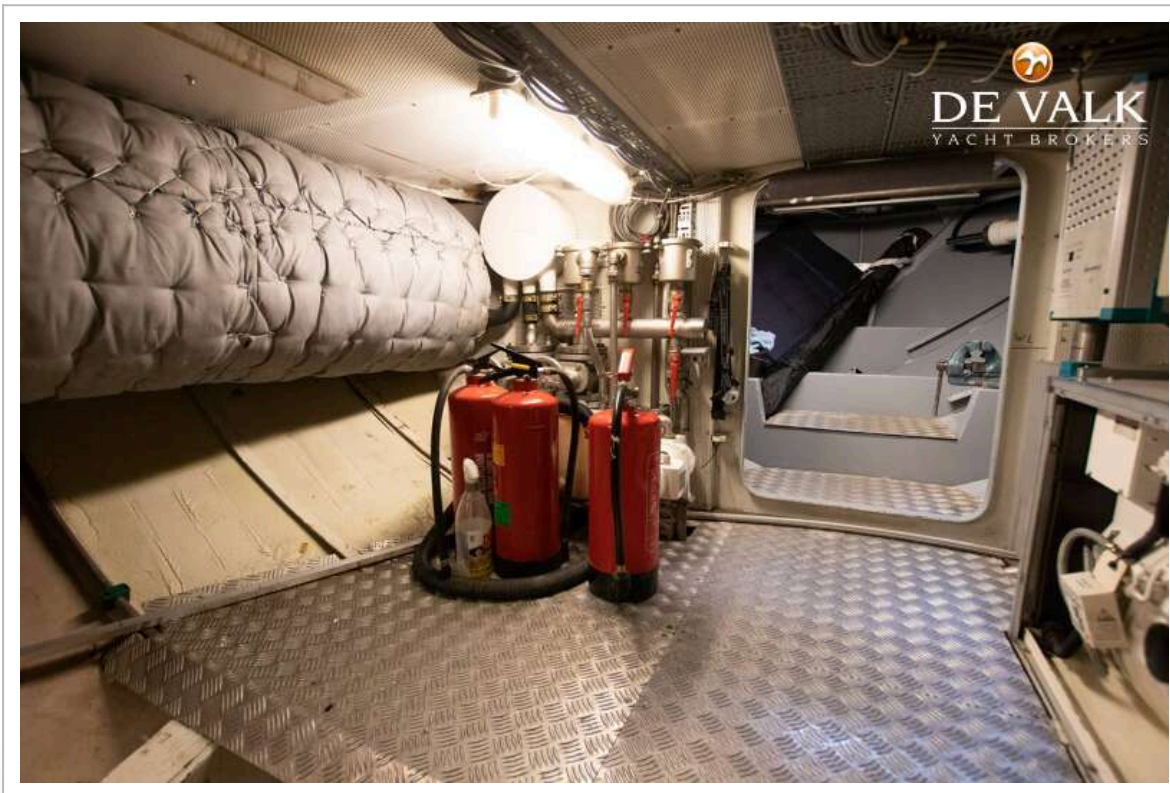
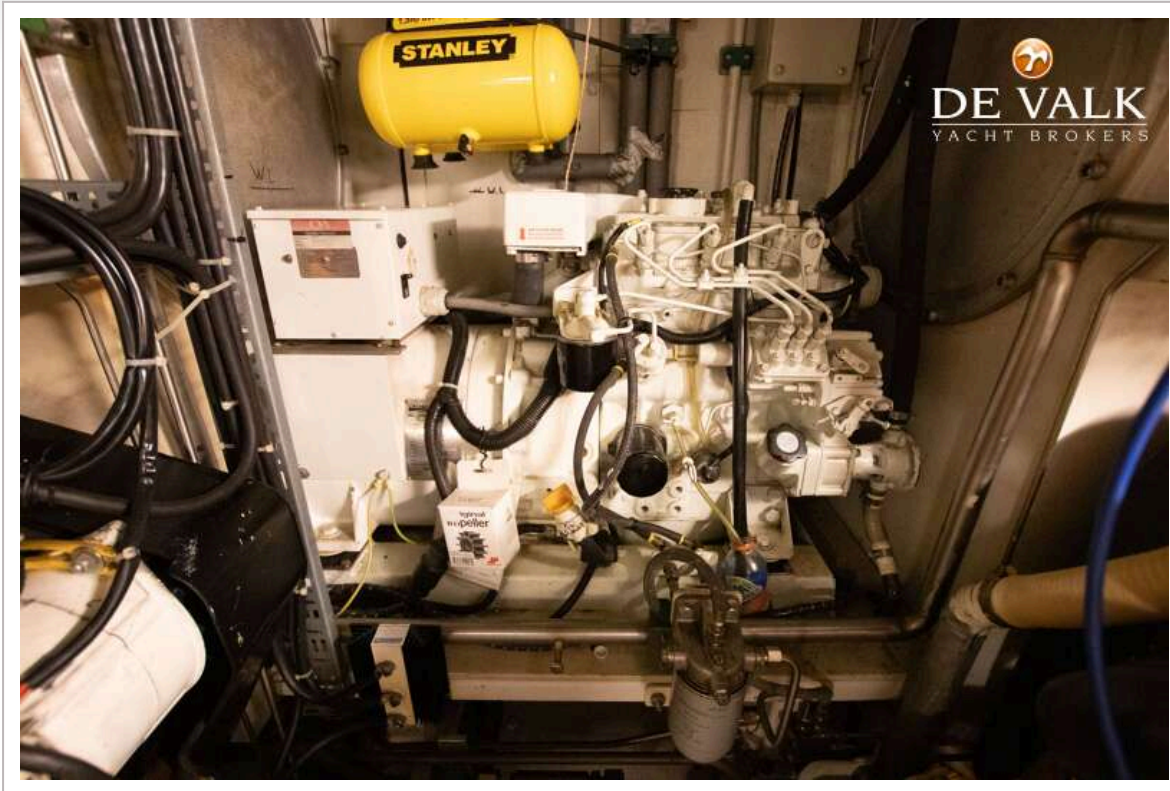
ONE OFF LUXE KOMPIER SPITSGATKOTTER 1650



ONE OFF LUXE KOMPIER SPITSGATKOTTER 1650



ONE OFF LUXE KOMPIER SPITSGATKOTTER 1650



ONE OFF LUXE KOMPIER SPITSGATKOTTER 1650

