



DE VALK
YACHT BROKERS



LINSSEN GS 500 WHEELHOUSE CUSTOM



DE VALK
YACHT BROKERS

LINSSEN GS 500 WHEELHOUSE CUSTOM

BROKER'S COMMENTS

This Linssen GS 500 Wheelhouse Custom is more comprehensive in every respect than any 500 series ever built. In addition to the custom wheelhouse and interior, there is a list of endless options designed especially for this boat. The sound insulation of this boat has been put together by a special bureau to raise the already silent 500 to a level of sound that is only known in superyachts. This boat is equipped with Rotoswing Zero Speed stabilisers, hydraulic bow and stern thrusters, reversible air conditioning, 12KVA generator and no less than 7 fixed berths.

Mark Hesselmans

SPECIFICATIONS

| | | | |
|---------------------|-------------------------------|----------------|------------------------------|
| Dimensions | 16.60 x 4.88 x 1.35 (m) | Builder | Linssen yachts |
| Built | 2015 | Cabins | 3 |
| Material | Steel | Berths | 8 |
| Engine(s) | 2 x Vetus Deutz DT66 E diesel | Hp/Kw | 2 x 170.00 (hp), 124.95 (kw) |
| Asking price | € 1.100.000 (VAT Paid) | Lying | at sales office |

CONTACT

| | | | |
|---------------------|--|------------------|----------------------|
| Sales office | De Valk Loosdrecht | Telephone | +31 35 582 90 30 |
| Address | 't Breukeleveense Meentje 6 1231 LM Loosdrecht / Wijdmeren The Netherlands | E-mail | loosdrecht@devalk.nl |

DISCLAIMER

These particulars are given in good faith as supplied but cannot be guaranteed.



LINSSEN GS 500 WHEELHOUSE CUSTOM

GENERAL

| | |
|-----------------------------------|--|
| Model | LINSSEN GS 500 WHEELHOUSE CUSTOM |
| Type | motor yacht |
| LOA (m) | 16,60 |
| LWL (m) | 14,90 |
| Beam (m) | 4,88 |
| Draft (m) | 1,35 |
| Air draft (m) | 3,89 |
| Year built | 2015 |
| Launched | 2015 |
| Builder | Linssen yachts |
| Country | The Netherlands |
| Designer | Linssen Yachts |
| Displacement (t) | 36 |
| CE norm | A |
| Hull material | steel |
| Hull colour | antracite gray Stone Gray metallic F1270/E1006 |
| Hull thickness (mm) | 6 and 5 mm |
| Hull shape | multi hard chine |
| Keel type | box keel |
| Superstructure material | steel |
| Superstructure (mm) | 4 and 5 |
| Deck plate thickness (mm) | 4 and 5 |
| Rubbing strake | fender rope |
| Deck material | steel |
| Deck finish | teak |
| Superstructure deck finish | paint |
| Cockpit deck finish | teak |
| Antifouling (year) | 2022 |
| Window frame | aluminium |
| Window material | double glazing Sun covers for salon and pilothouse windows |



LINSSEN GS 500 WHEELHOUSE CUSTOM

| | |
|-------------------------------------|-------------------------------|
| Deckhatch | 3 with blinds and Fly screens |
| Portholes | aluminium 14 all opening |
| Insulation | foam |
| Mast can be lowered | hydraulic |
| Fuel tank (litre) | 2800 |
| Level indicator (fuel tank) | yes |
| Freshwater tank (litre) | 960 |
| Level indicator (freshwater) | yes |
| Blackwater tank (litre) | 400 |
| Blackwater tank extraction | deck extraction + pump |
| Wheel steering | yes |
| Inside helm position | yes |
| Emergency tiller | yes |
| Extra info | Magnesium Anodes |
| Extra info | Full width aft deck hard top |

ACCOMMODATION

| | |
|----------------------------|---|
| Cabins | 3 |
| Berths | 8 |
| Interior | cherry |
| Layout | Custom owner |
| Floor | parquet Inota Twin 9504 |
| Aft deck | yes |
| Pilot house | yes |
| Saloon | yes |
| Headroom saloon (m) | 2,05 |
| Sliding roof | Webasto custom electric |
| Heating | yes |
| Air-conditioning | single cycle airco Marvair softstart split units 48.000 BTU controls in each cabin |
| Navigation center | yes |



LINSSEN GS 500 WHEELHOUSE CUSTOM

| | |
|---------------------------------|--|
| Aft Cabin | yes |
| Dining room | yes |
| Opening door to aft deck | In 4 parts high gloss Teak varnished |
| Galley | U shaped |
| Countertop | corian |
| Sink | stainless steel |
| Cooker | induction 2 zone Atag H13271M 2 x 3 Kw |
| Microwave/oven combi | Stainless steel |
| Fridge | Liebherr IKB2860 140 L.with seperate inverter |
| Freezer | Liebherr IG966 77 L with seperate 500 W inverter |
| Hot water system | 220V + engine Boiler 80 L oversized |
| Water pressure system | With city water inlet and 5 and 10 Micron filters & SYS-POU250 |
| Owners cabin | French bed With removable kids bed |
| Bed length (m) | 2,05 x 1,50 |
| Wardrobe | hanging/drawers/shelves |
| Bathroom | en suite |
| Toilet | en suite |
| Toilet system | electric |
| Wash basin | in the bathroom |
| Shower | en suite |
| Extra info | High tech medical anti bacterial finish |
| Guest cabin 1 | v-bed With 3rd bed |
| Bed length (m) | 2,00 x 0,70 |
| Wardrobe | hanging and shelves |
| Bathroom | en suite |
| Toilet | en suite |
| Toilet system | electric |
| Wash basin | in the bathroom |
| Shower | en suite |
| Extra info | This bathroom is shared with the second guest cabin |
| Guest cabin 2 | bunk bed |
| Bed length (m) | 2,00 x 0,70 |



LINSSEN GS 500 WHEELHOUSE CUSTOM

| | |
|------------------------|----------------------------------|
| Wardrobe | hanging and shelves |
| Bathroom | shared |
| Toilet | shared |
| Shower | shared |
| Washing machine | Miele marine W5876 WPS |
| Dryer | Miele Marine T8860 WP ecocomfort |

MACHINERY

| | |
|---------------------------------|---|
| No of engines | 2 |
| Make | Vetus Deutz |
| Type | DT66 E |
| HP | 170 |
| kW | 124.95 |
| Fuel | diesel |
| Year installed | 2014 |
| Engine cooling system | freshwater heat exchanger |
| Drive | shaft |
| Shaft seal | Volvo |
| Engine controls | electrical With position warning lights |
| Gearbox | hydraulic ZF45H 2,5:1 |
| Bowthruster | hydraulic 160 kgf (13 hp) |
| Sternthruster | hydraulic 160 kgf (13 hp) |
| Thrust bearing | Aquadrive |
| Propeller type | fixed |
| Propeller blades | 5 for lower noise, vibration and cavitation |
| Propeller shaft material | stainless steel |
| Shaft lubrication | water |
| Manual bilge pump | yes |
| Electric bilge pump | yes |
| Bilge alarm | yes |
| Electrical installation | 12 & 24 V DC and 220 V AC |



LINSSEN GS 500 WHEELHOUSE CUSTOM

| | |
|---------------------------------|--|
| Generator | silent separator 12 kW Whisper in sound box |
| Batteries | All Exide, all replaced 2022 |
| Start battery | yes |
| Service battery | 6 x 120 AH for 360 AH 24 V |
| Generator battery | yes |
| Bowthruster battery | yes |
| Sternthruster battery | yes |
| Battery monitor | Mastervolt easy view 5 |
| Battery charger | Mastervolt 24 V 100 AH |
| Inverter | Mastervolt 2500 W 24V |
| Battery charger/inverter | 5000W 24 V dedicated for for Rotoswing |
| Diode battery combiners | yes |
| Shorepower | with cable Second shorepower inlet both 32 Amp |
| Insulation transformer | One for each shore connection |
| Stabilizers | 0-speed Rotoswing |
| Extra info | Double fuel filters |

NAVIGATION

| | |
|-------------------------------|---|
| Compass | yes |
| Electric compass | Raymarine |
| Multi control display | 3 X Raymarine I70 |
| Depth sounder | Raymarine |
| Log | Raymarine |
| Repeater | Raymarine |
| Fish finder | Raymarine CP450C with CHIRP R109LM transducer |
| VHF | Raymarine |
| Autopilot | Raymarine smart controller |
| Rudder angle indicator | Raymarine |
| Radar | Raymarine HD24 4 KVA |
| GPS | Raymarine |
| Plotter | Raymarine |



LINSSEN GS 500 WHEELHOUSE CUSTOM

| | |
|---------------------------------|---|
| Radar/GPS/plotter | 2 x raymarine GS165 with remote |
| Weather receiver | NWF MRD80 and airmax pb200 |
| PC connection | yes |
| Wifi antenna | Globe surfer III with router |
| Electronic chart(s) | Navionics platinum+ large / Europe |
| AIS transceiver | Raymarine |
| EPIRB | yes |
| Personal MOB transmitter | For 7 persons |
| Camera | Exalto MXN Port, starboard, wheelhouse and platform |
| Navigation lights | yes |
| Searchlight | Automatic double beam 225 SL remote controled |
| Loudhailer | yes |

EQUIPMENT

| | |
|-------------------------|------------------------------------|
| Cockpit cover | yes |
| Dodger | yes |
| Winter cover | yes |
| Cockpit cushions | yes |
| Cockpit table | yes |
| Cockpit chairs | Fixed U sofa |
| Bathing platform | yes |
| Boarding ladder | yes |
| Transom door | yes |
| Gangway | Hydraulic model 8999/34 |
| Deck shower | yes |
| Anchor | Bruce Stainless 40 KG |
| Anchor chain | 80 M 12 mm Stainless with washdown |
| Capstan | Electric |
| Windlass aft | electrical 2 x mooring winch |
| Deck wash | yes |
| Dinghy | Zodiac 210 |



LINSSEN GS 500 WHEELHOUSE CUSTOM

| | |
|----------------------------|---|
| Outboard | Torqueedo 1003 |
| Outboard support | yes |
| Sea railing | stainless steel Heavy duty Oval High gloss Polish |
| Grab rail (superstructure) | yes |
| Railing side opening gates | yes |
| Pushpit | yes |
| Pulpit | yes |
| Life raft | container Viking Rescue Pro 8 |
| Life raft (pers) | 8 |
| Last life raft survey | 2022 |
| Lifejackets | yes |
| Lifebuoy | yes |
| Danbuoy | yes |
| Rope cutter | yes |
| Wiper | 3 x |
| Horn | yes |
| Radar reflector | yes |
| Fenders | yes |
| Mooring lines | yes |
| Spare parts | yes |
| Tools | yes |
| Alarm system | Navprofs E marine, low temp, bilge water, movement incl GPS/GSM |
| Satellite | Iridium Extreme 9575 |
| Radio-cd player | Fusion KEF160 Ci |
| DVD player | yes |
| iPod connection | MS-BT200 & USB AV700I modules |
| Sub-woofer | Tweeters and bass seperated |
| Cockpit speakers | yes |
| Speakers in salon | yes |
| Clock - barometer | yes |
| Fire extinguisher | yes |



Extinguisher in engine room

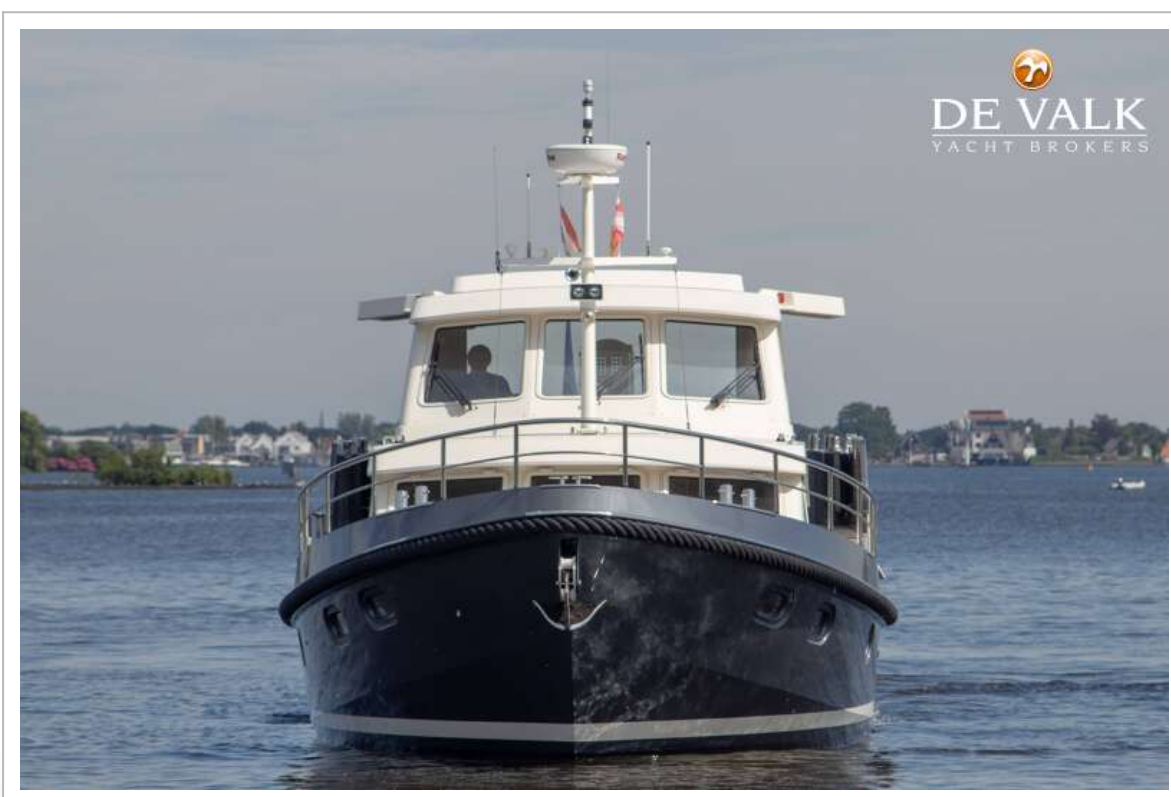
yes



LINSSEN GS 500 WHEELHOUSE CUSTOM



LINSSEN GS 500 WHEELHOUSE CUSTOM



LINSSEN GS 500 WHEELHOUSE CUSTOM



LINSSEN GS 500 WHEELHOUSE CUSTOM



LINSSEN GS 500 WHEELHOUSE CUSTOM



LINSSEN GS 500 WHEELHOUSE CUSTOM



LINSSEN GS 500 WHEELHOUSE CUSTOM



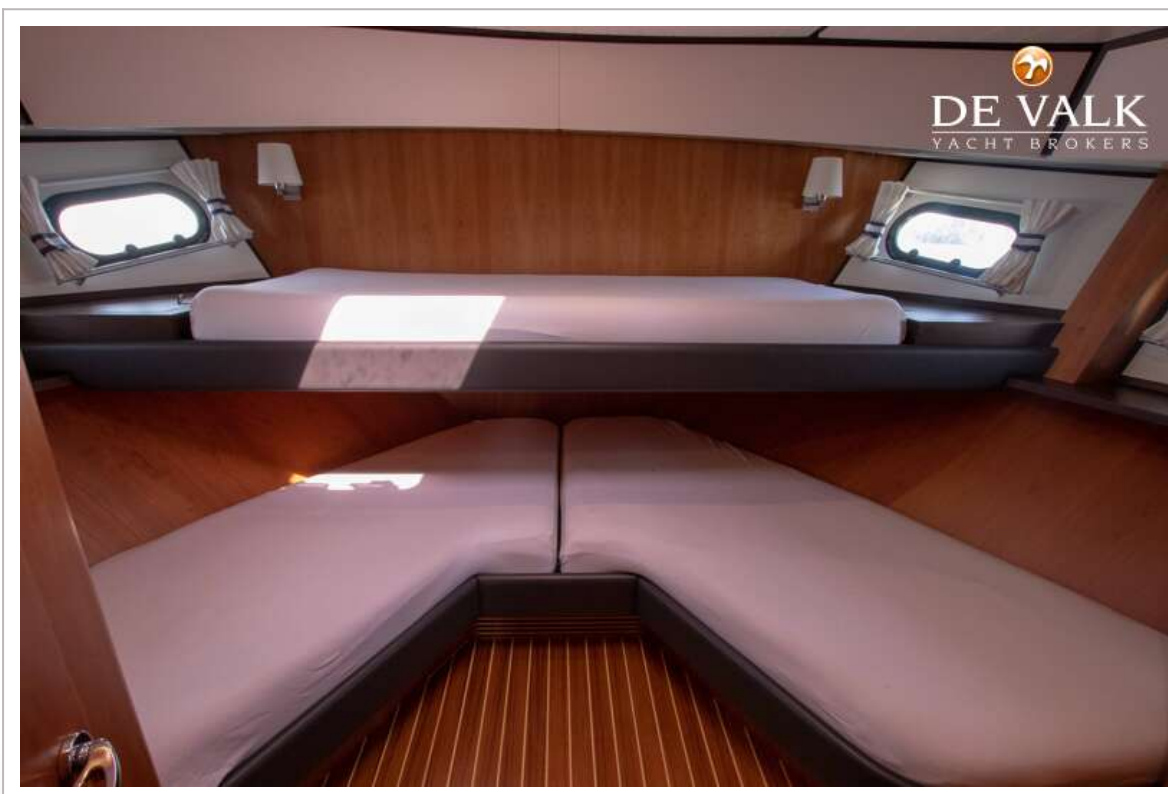
LINSSEN GS 500 WHEELHOUSE CUSTOM



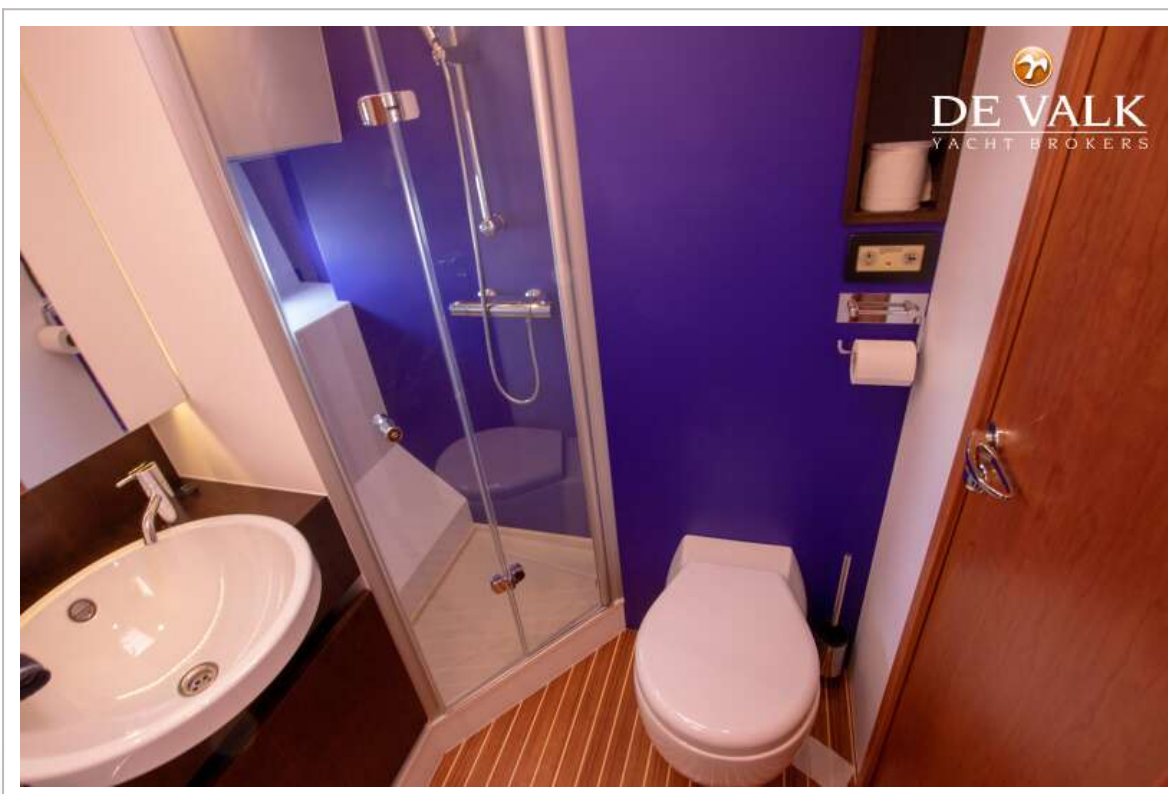
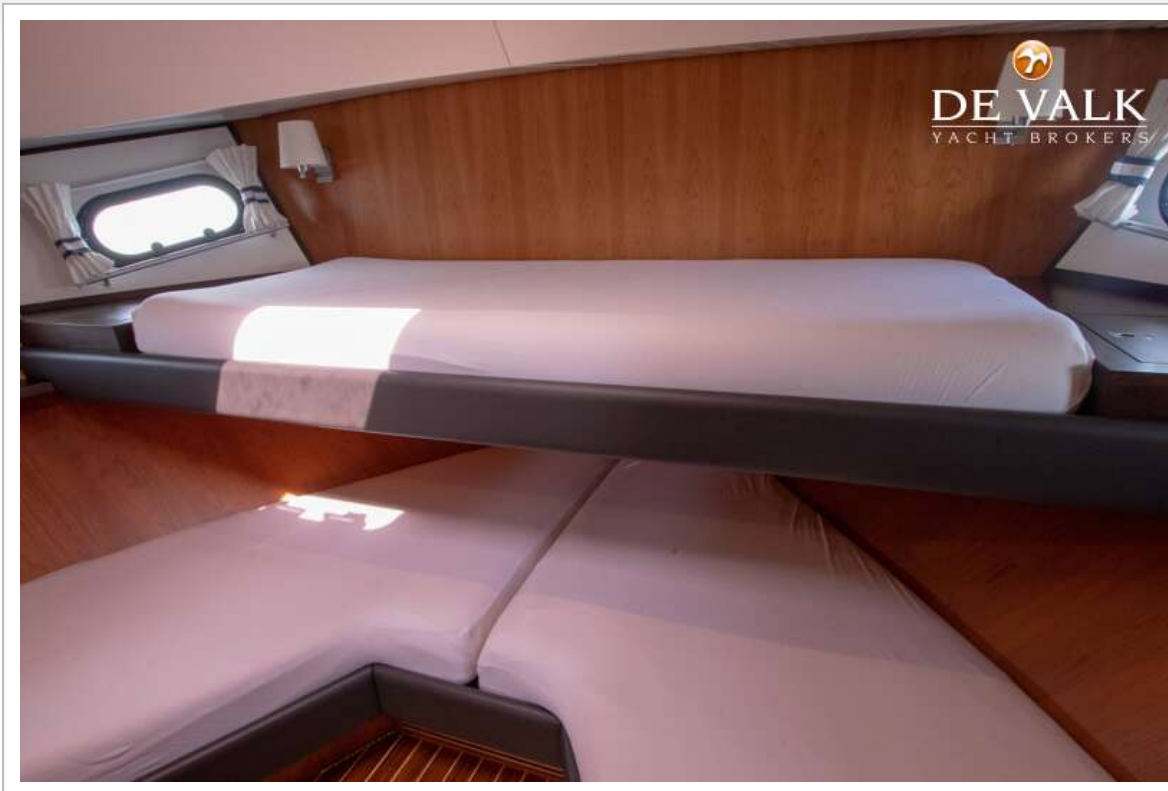
LINSSEN GS 500 WHEELHOUSE CUSTOM



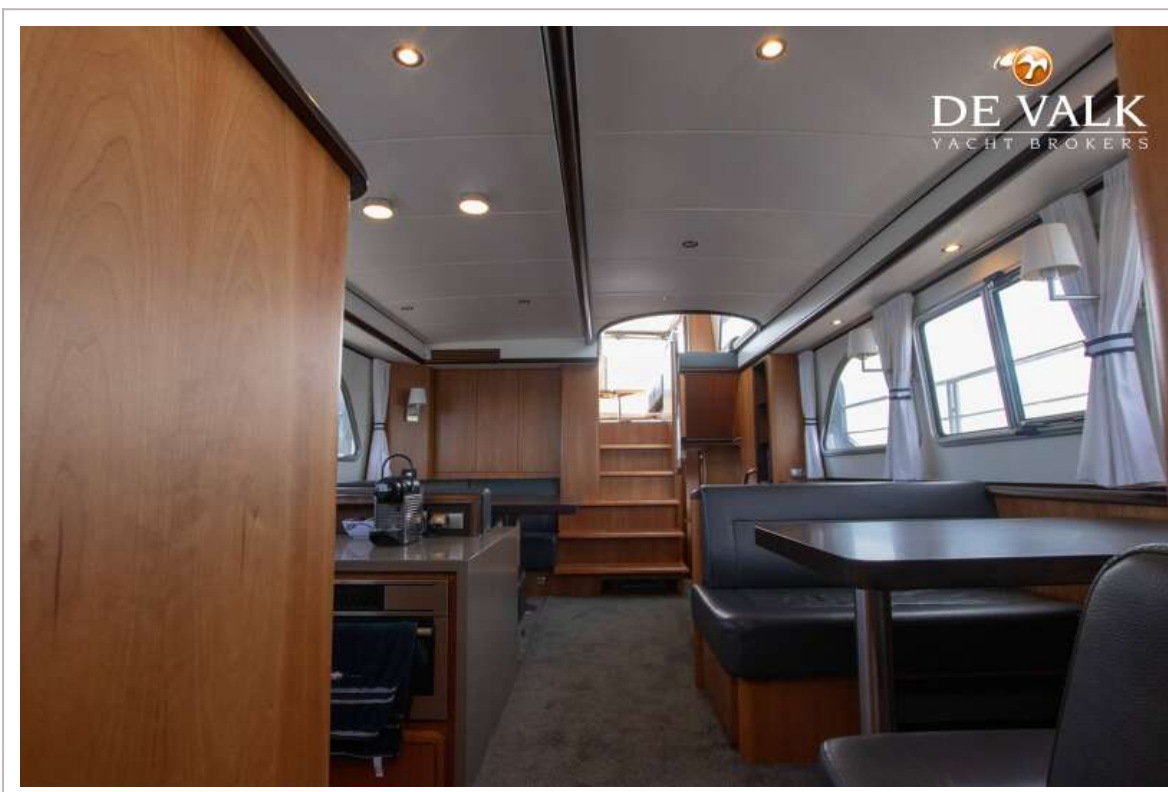
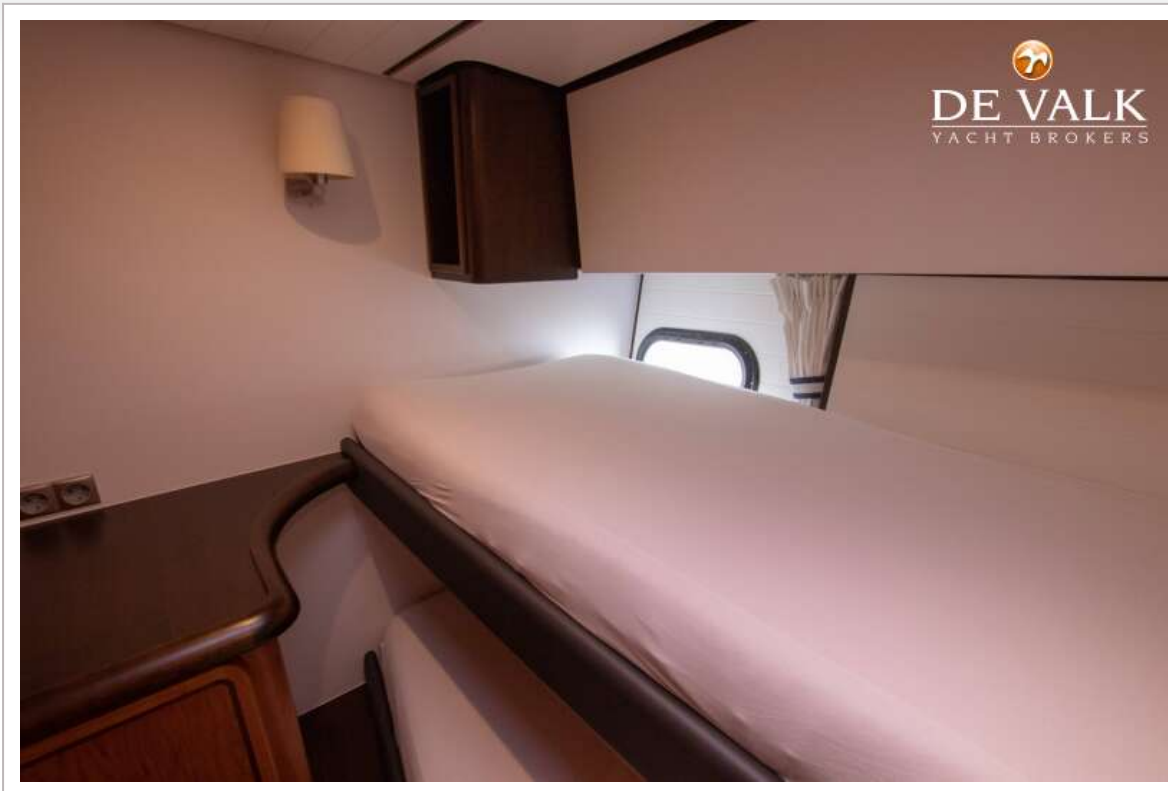
LINSSEN GS 500 WHEELHOUSE CUSTOM



LINSSEN GS 500 WHEELHOUSE CUSTOM



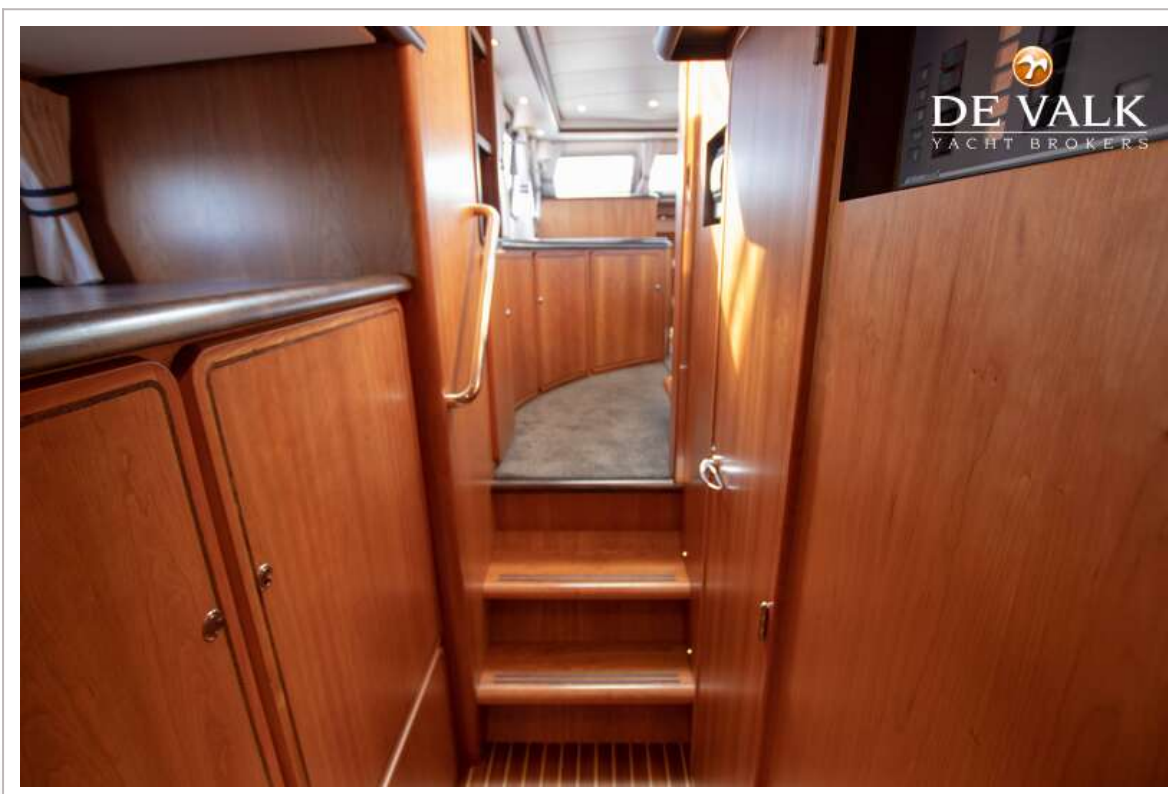
LINSSEN GS 500 WHEELHOUSE CUSTOM



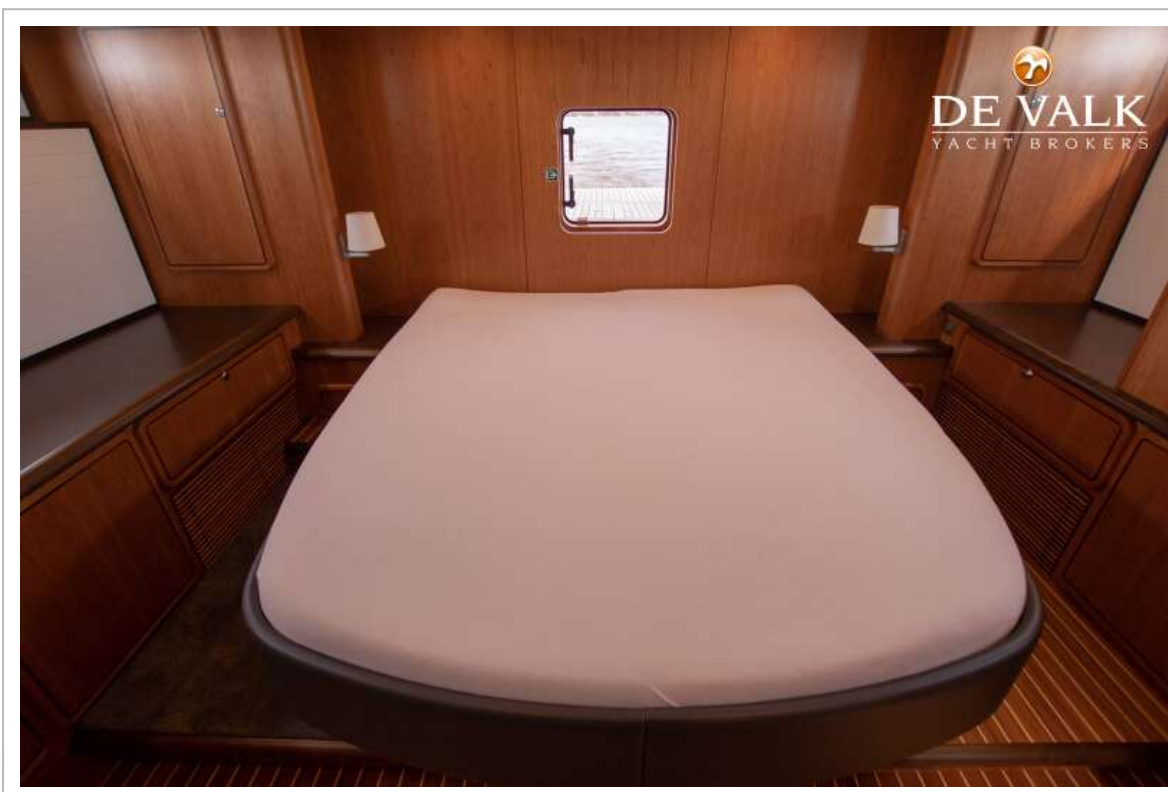
LINSSEN GS 500 WHEELHOUSE CUSTOM



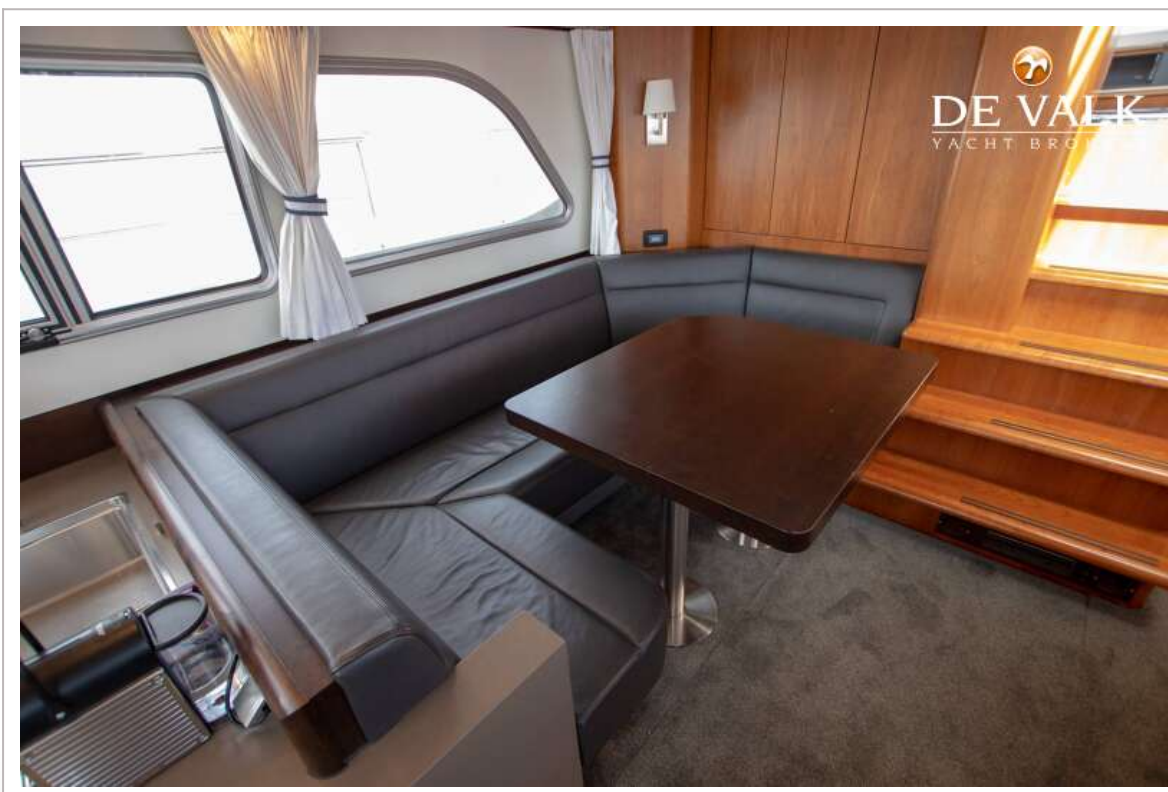
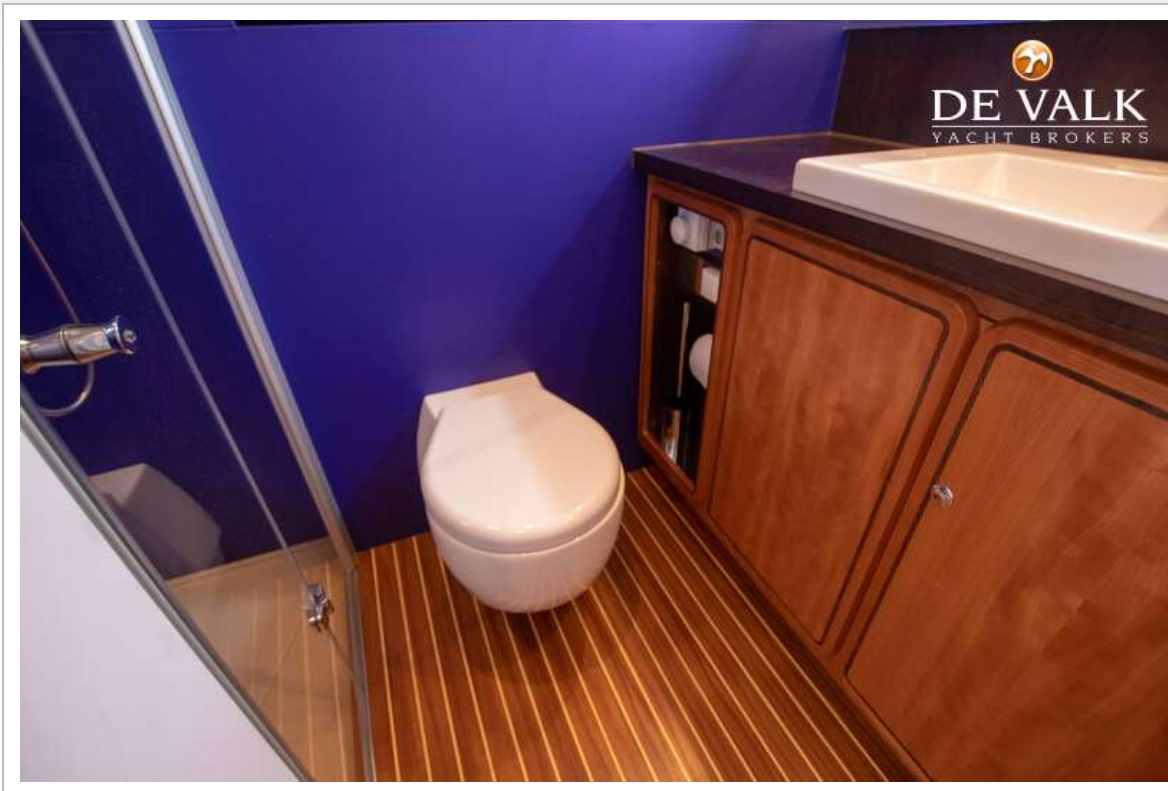
LINSSEN GS 500 WHEELHOUSE CUSTOM



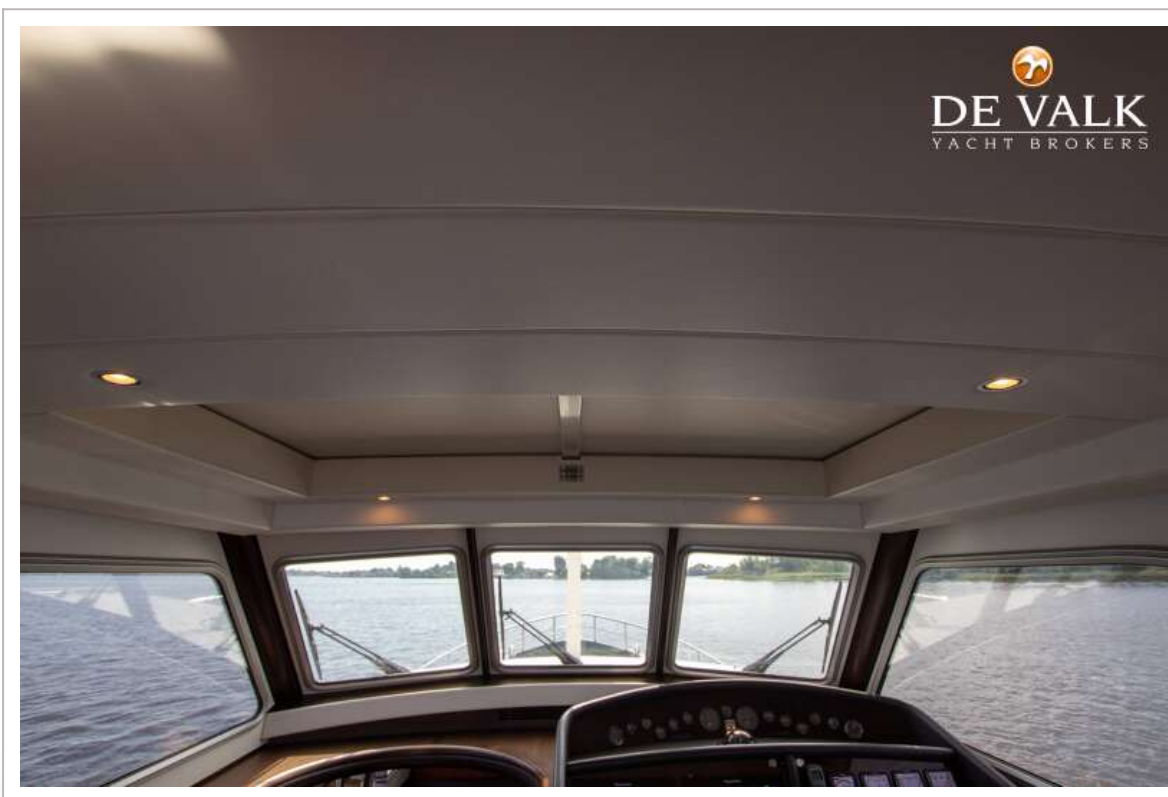
LINSSEN GS 500 WHEELHOUSE CUSTOM



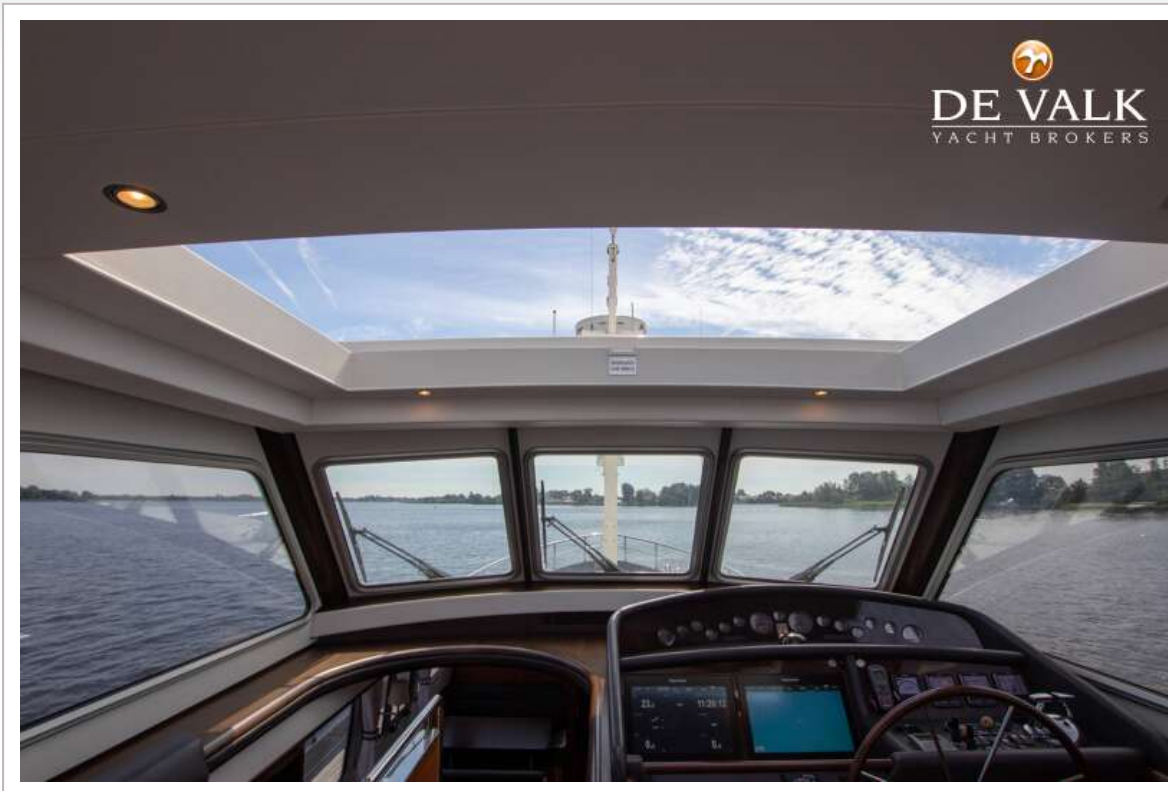
LINSSEN GS 500 WHEELHOUSE CUSTOM



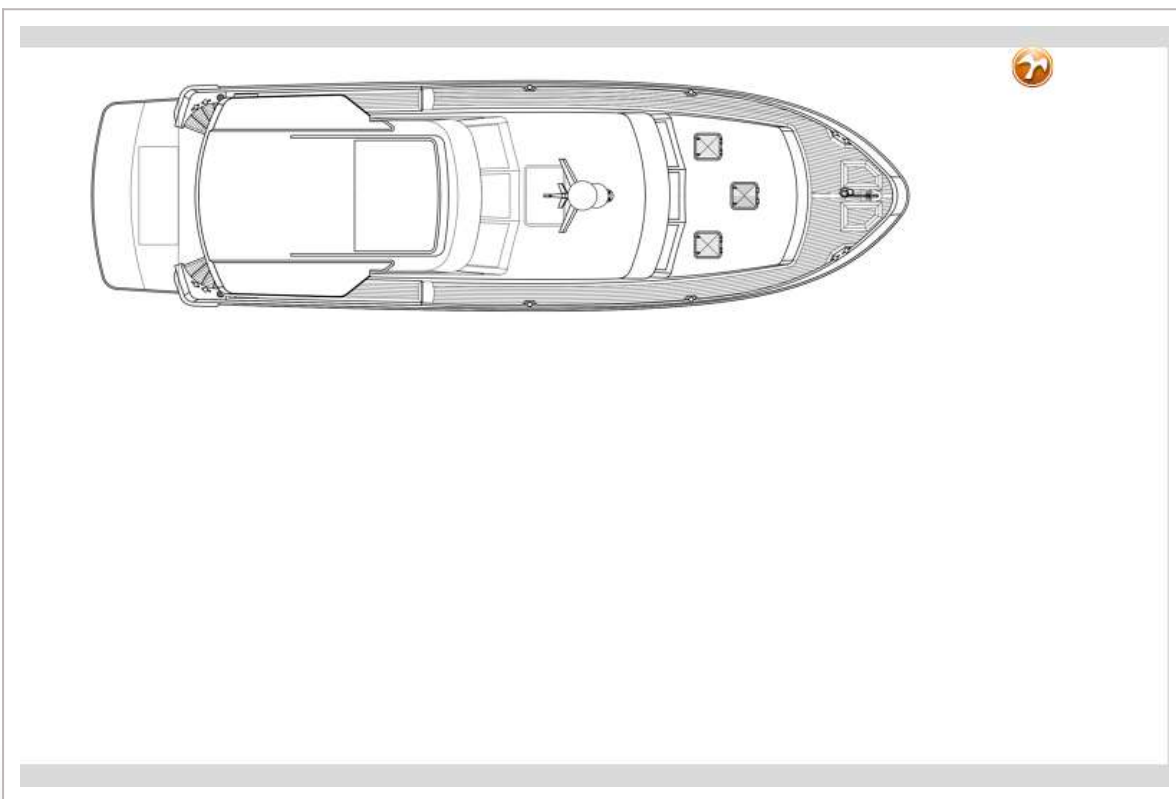
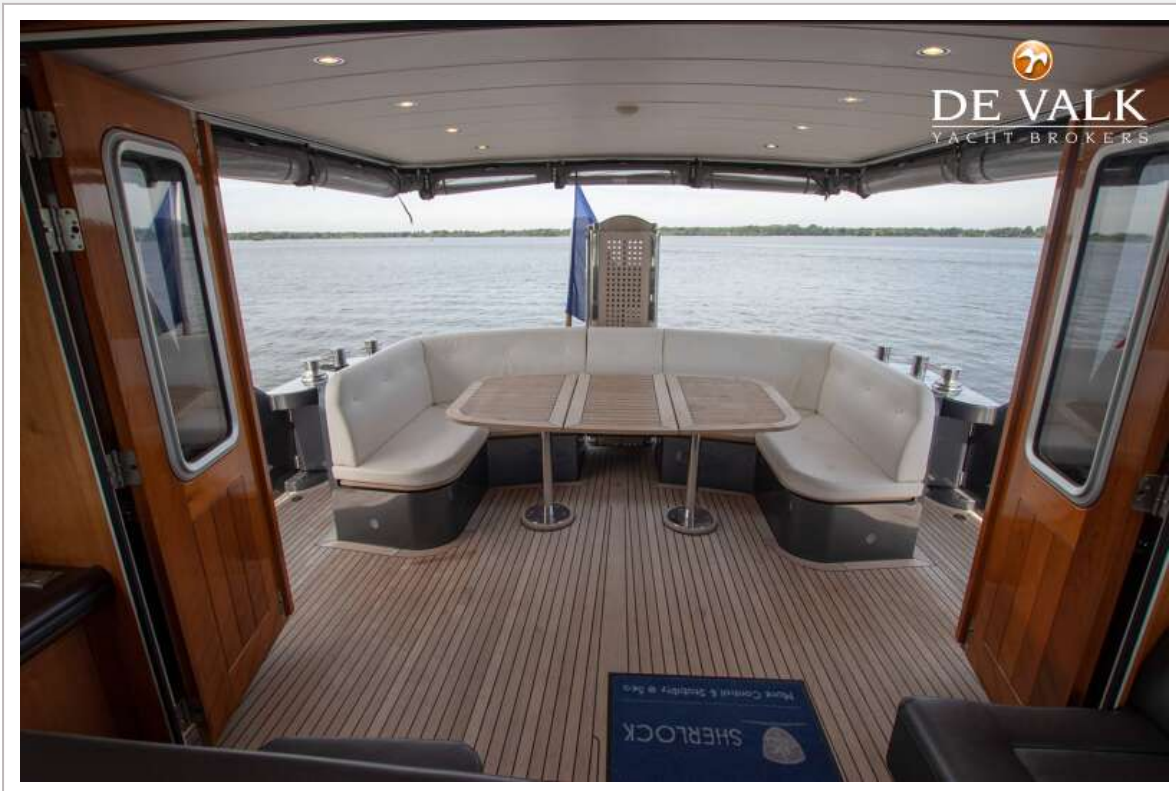
LINSSEN GS 500 WHEELHOUSE CUSTOM



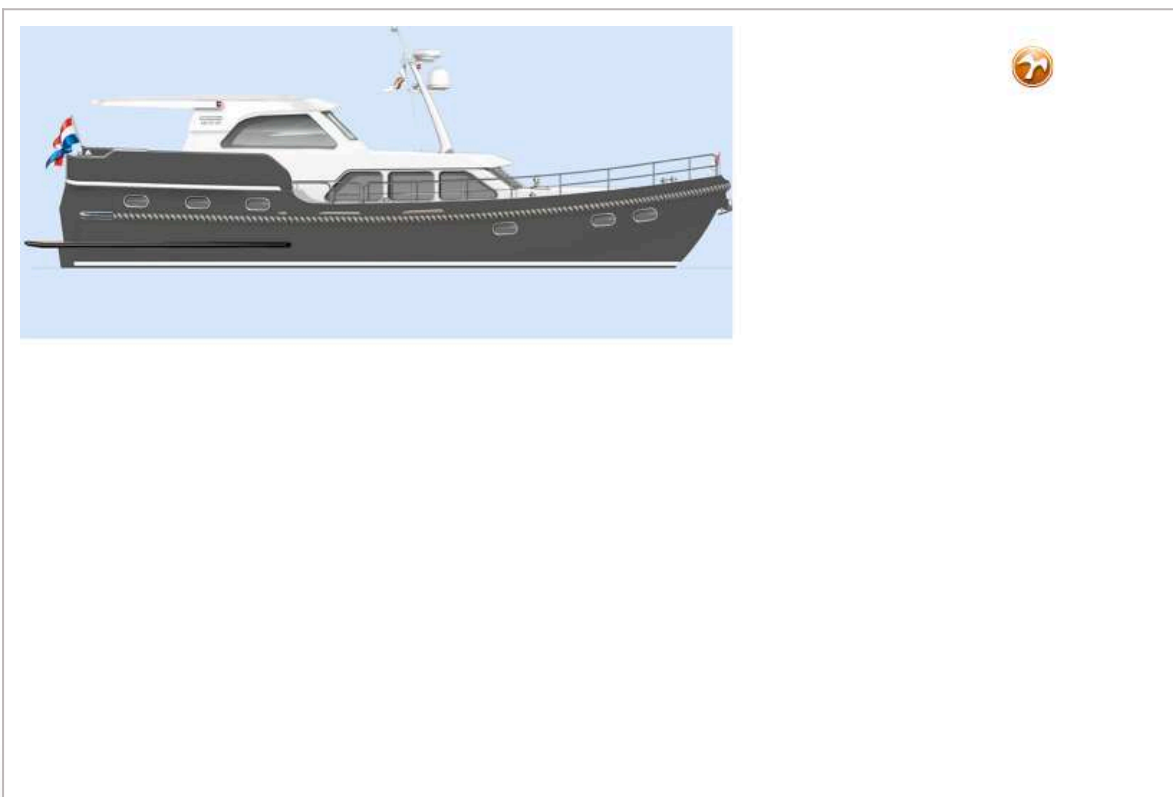
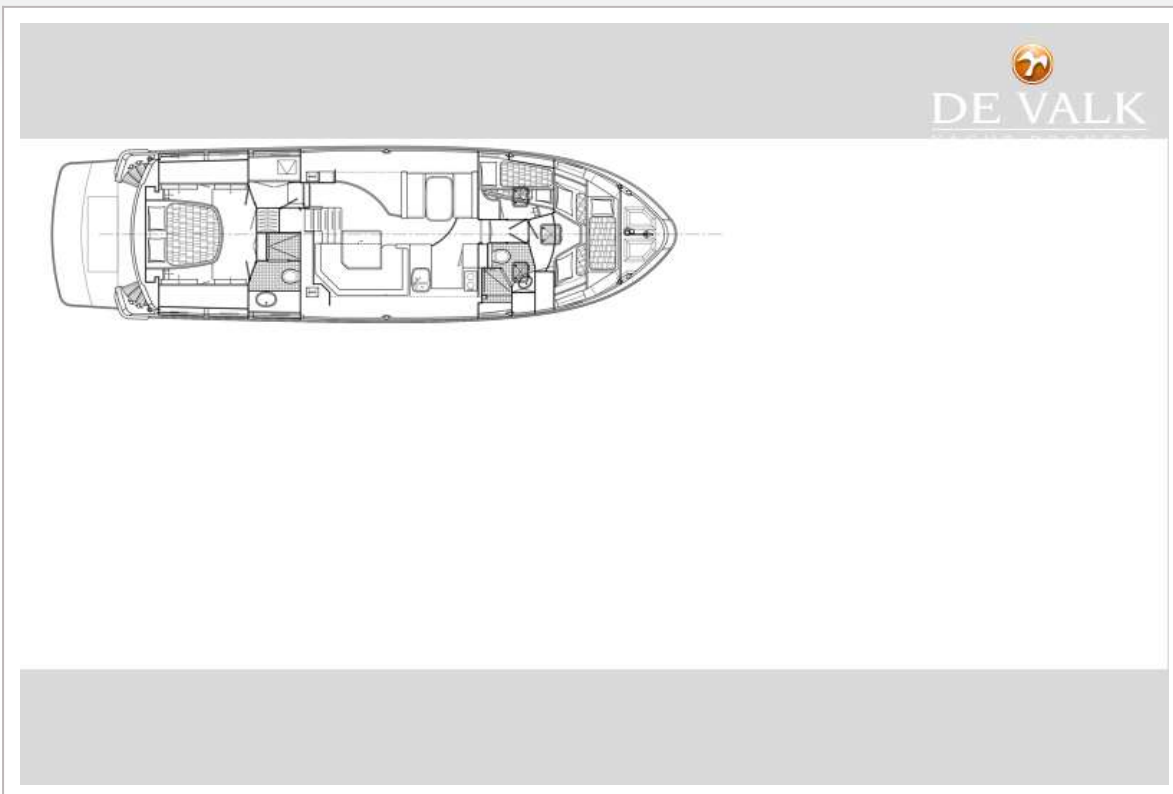
LINSSEN GS 500 WHEELHOUSE CUSTOM



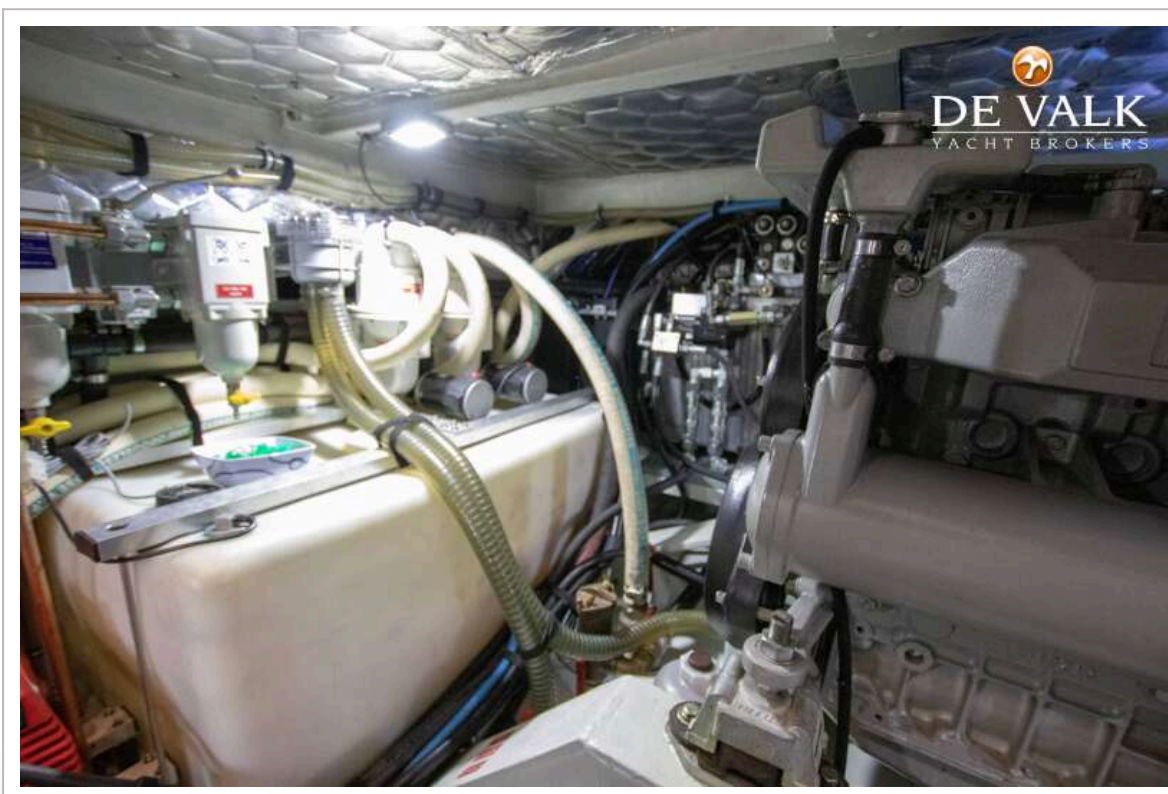
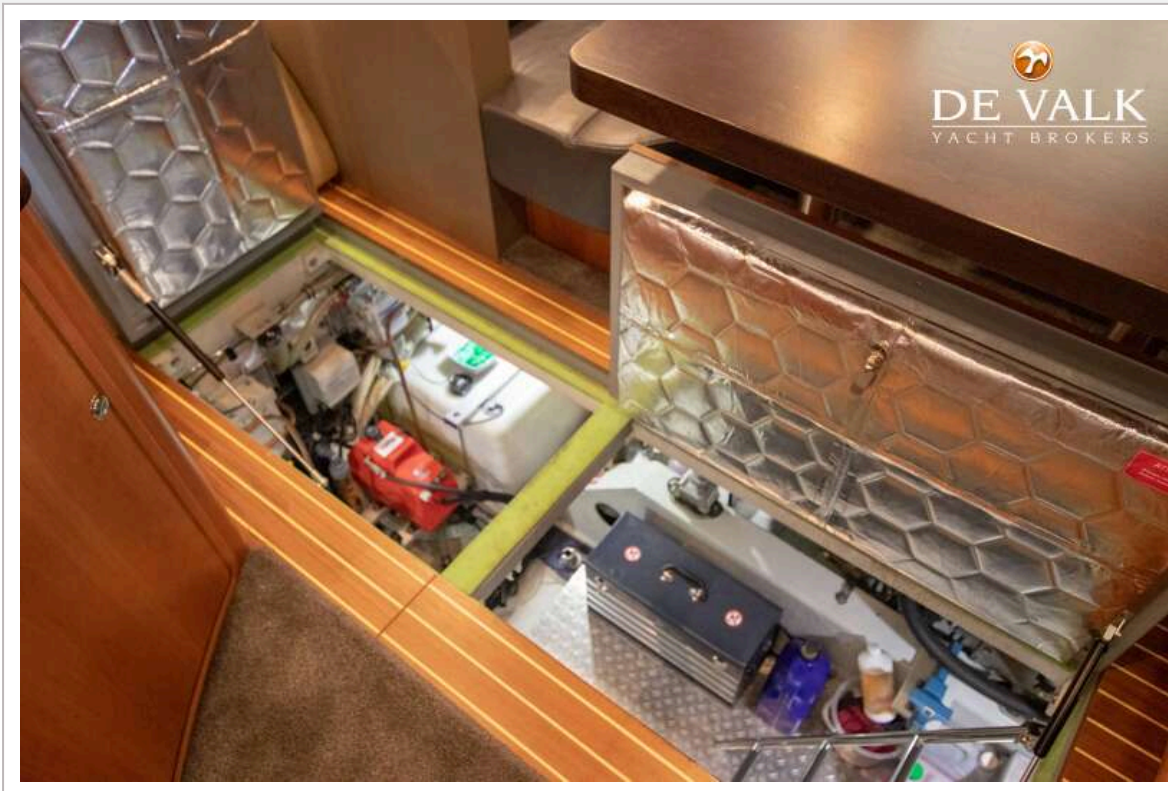
LINSSEN GS 500 WHEELHOUSE CUSTOM



LINSSEN GS 500 WHEELHOUSE CUSTOM



LINSSEN GS 500 WHEELHOUSE CUSTOM



LINSSEN GS 500 WHEELHOUSE CUSTOM

