



DE VALK
YACHT BROKERS



SEA RAY 340 SUNDANCER



DE VALK
YACHT BROKERS

SEA RAY 340 SUNDANCER

BROKER'S COMMENTS

The Sea Ray 340 is characterized by innovative interior design, stability and excellent sailing characteristics for her size. On board you will find a spacious saloon, a practical galley, a guest and owner's cabin with sufficient privacy and a spacious wet room with shower and toilet. This Sea Ray 340 has received a complete overhaul (hull, interior, equipment and engines) in 2020 and presents herself in excellent conditions. A perfect day cruiser with bathing platform and sociable cockpit.

Jörg Hellmich

SPECIFICATIONS

| | | | |
|---------------------|----------------------------------|----------------|---------------------------|
| Dimensions | 10.80 x 3.48 x 0.95 (m) | Builder | Sea Ray |
| Built | 1992 | Cabins | 1 |
| Material | GRP | Berths | 4 |
| Engine(s) | 2 x Mercruiser 8 Cylinder petrol | Hp/Kw | 2 x 270 (hp), 198.45 (kw) |
| Asking price | € 34.000 (VAT Paid) | Lying | at sales office |

CONTACT

| | | | |
|---------------------|---|------------------|-------------------|
| Sales office | De Valk Almeria | Telephone | +34 950 497 825 |
| Address | Puerto de Almerimar Darsena de la Batea 1, No. 42, 04711 Almerimar Spain | E-mail | almeria@devalk.nl |

DISCLAIMER

These particulars are given in good faith as supplied but cannot be guaranteed.



SEA RAY 340 SUNDANCER

GENERAL

| | |
|-----------------------------------|------------------------|
| Model | SEA RAY 340 SUNDANCER |
| Type | motor yacht |
| LOA (m) | 10,80 |
| LWL (m) | 9,45 |
| Beam (m) | 3,48 |
| Draft (m) | 0,95 |
| Air draft (m) | 3,00 |
| Headroom (m) | 1,95 |
| Year built | 1992 |
| Launched | 1992 |
| Builder | Sea Ray |
| Country | U.S.A. |
| Designer | Sea Ray |
| Displacement (t) | 13,53 |
| Gross tonnage | 7 |
| CE norm | NA |
| Hull material | GRP |
| Hull colour | white |
| Hull shape | Fast Displacement Hull |
| Superstructure material | GRP |
| Deck material | GRP |
| Deck finish | non-skid moulded in |
| Superstructure deck finish | non-skid moulded in |
| Cockpit deck finish | synthetic teak |
| Antifouling (year) | 2021 |
| Window frame | aluminium |
| Window material | polycarbonate |
| Deckhatch | yes |
| Radar arch | non collapsible |
| Fuel tank (litre) | stainless steel 150 |



SEA RAY 340 SUNDANCER

| | |
|------------------------------|---------------------|
| Fuel tank 2 (litre) | stainless steel 150 |
| Level indicator (fuel tank) | yes |
| Freshwater tank (litre) | stainless steel 150 |
| Level indicator (freshwater) | yes |
| Wheel steering | hydraulic |
| Outside helm position | hydraulic |
| Emergency tiller | yes |

ACCOMMODATION

| | |
|-------------------------------|-----------------------|
| Cabins | 1 |
| Berths | 4 |
| Interior | American maple |
| Layout | yes |
| Floor | carpet |
| Open cockpit | yes |
| Aft deck | yes |
| Headroom saloon (m) | 1,95 |
| Dinette to convert into berth | yes |
| Opening door to cockpit | yes |
| Galley | yes |
| Countertop | plastic |
| Sink | porcelin |
| Cooker | induction Ceramic |
| Microwave/oven combi | yes |
| Fridge | 60 L + cockpit fridge |
| Freezer | yes |
| Hot water system | 220V + engine |
| Water pressure system | electrical |
| Owners cabin | double bed |
| Bed length (m) | 2,00 |
| Wardrobe | drawers and shelves |



SEA RAY 340 SUNDANCER

| | |
|---------------|---------------|
| Toilet | shared |
| Toilet system | electric |
| Wash basin | at the toilet |
| Shower | shared |

MACHINERY

| | |
|--------------------------|------------------------------|
| No of engines | 2 |
| Make | MerCruiser |
| Type | 8 Cylinder |
| HP | 270 |
| kW | 198.45 |
| Fuel | petrol |
| Year installed | 2004 |
| Year of overhaul | 2020 |
| Maximum speed (kn) | 25 |
| Cruising speed (kn) | 14 |
| Consumption (l/hr) | 80 |
| Range (nm) | 100 |
| Engine hours | 800 |
| Engine cooling system | freshwater heat exchanger |
| Drive | shaft |
| Shaft seal | yes |
| Gearbox | Velvet bornerg v |
| Start battery | 2 x 12V 85Ah (2021) |
| Service battery | 3 x 12V 85 Ah (2021) |
| Battery charger/inverter | yes |
| Solar panel | 1 x 480W (hybrid mode 1800W) |
| Shorepower | with cable 230V |
| Trimtabs | yes |

NAVIGATION



SEA RAY 340 SUNDANCER

| | |
|-------------------|--------------------------|
| Compass | yes |
| VHF | Lawrance LVR-250E (2020) |
| GPS | Garmin GPS 126 (2020) |
| EPIRB | yes |
| Navigation lights | yes |

EQUIPMENT

| | |
|-----------------------------|-----------------|
| Cockpit cover | yes |
| Bimini | New |
| Sun awning | yes |
| Cockpit cushions | New |
| Cockpit table | yes |
| Cockpit chairs | yes |
| Bathing platform | yes |
| Boarding ladder | stainless steel |
| Transom door | yes |
| Deck shower | yes |
| Anchor | Danforth |
| Anchor chain | 20 m |
| Windlass | electrical |
| Sea railing | stainless steel |
| Life raft | yes |
| Lifejackets | yes |
| Lifebuoy | yes |
| Radar reflector | yes |
| Fenders | yes |
| Mooring lines | yes |
| Cockpit speakers | yes |
| Fire extinguisher | yes |
| Extinguisher in engine room | yes |



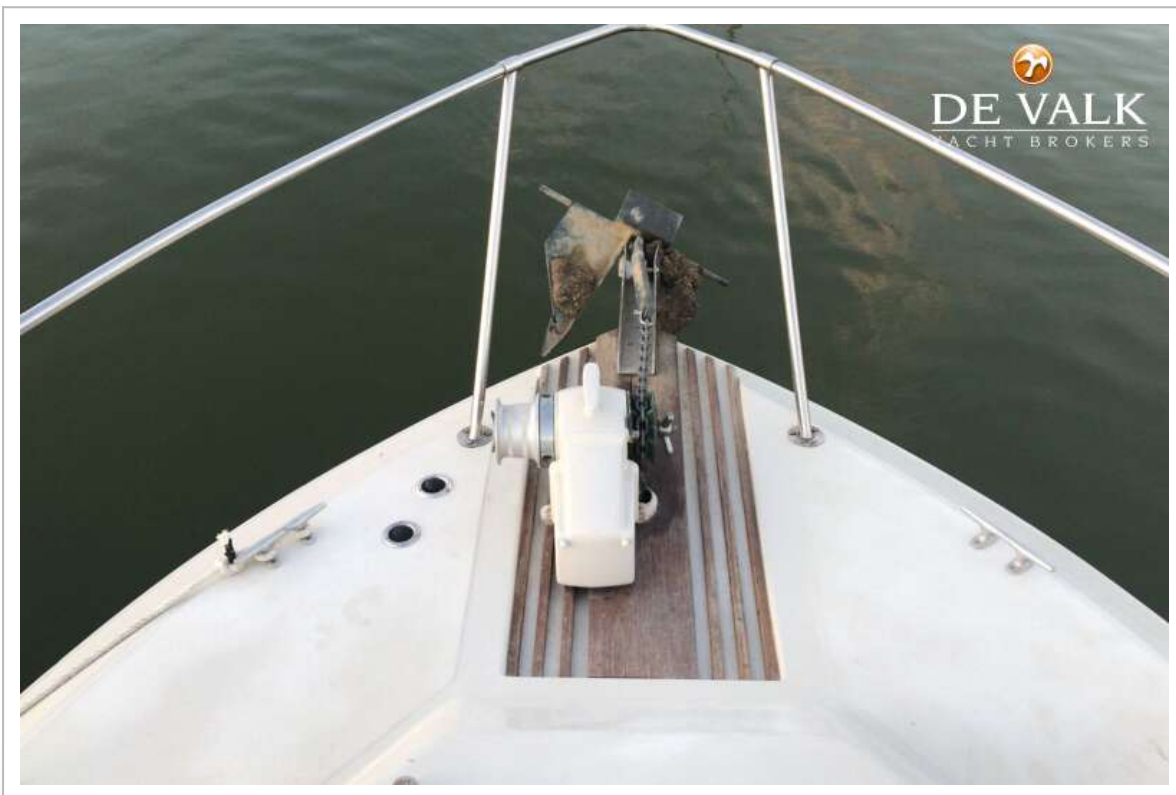
SEA RAY 340 SUNDANCER



SEA RAY 340 SUNDANCER



SEA RAY 340 SUNDANCER



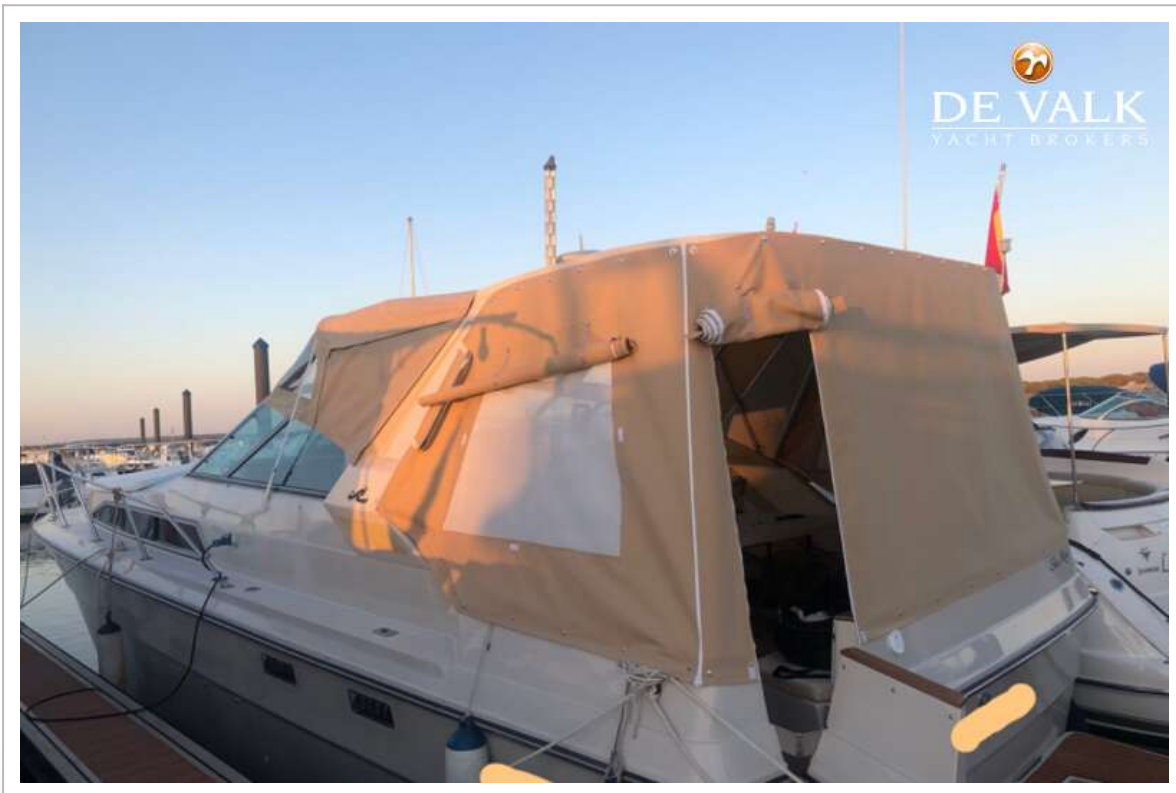
SEA RAY 340 SUNDANCER



SEA RAY 340 SUNDANCER



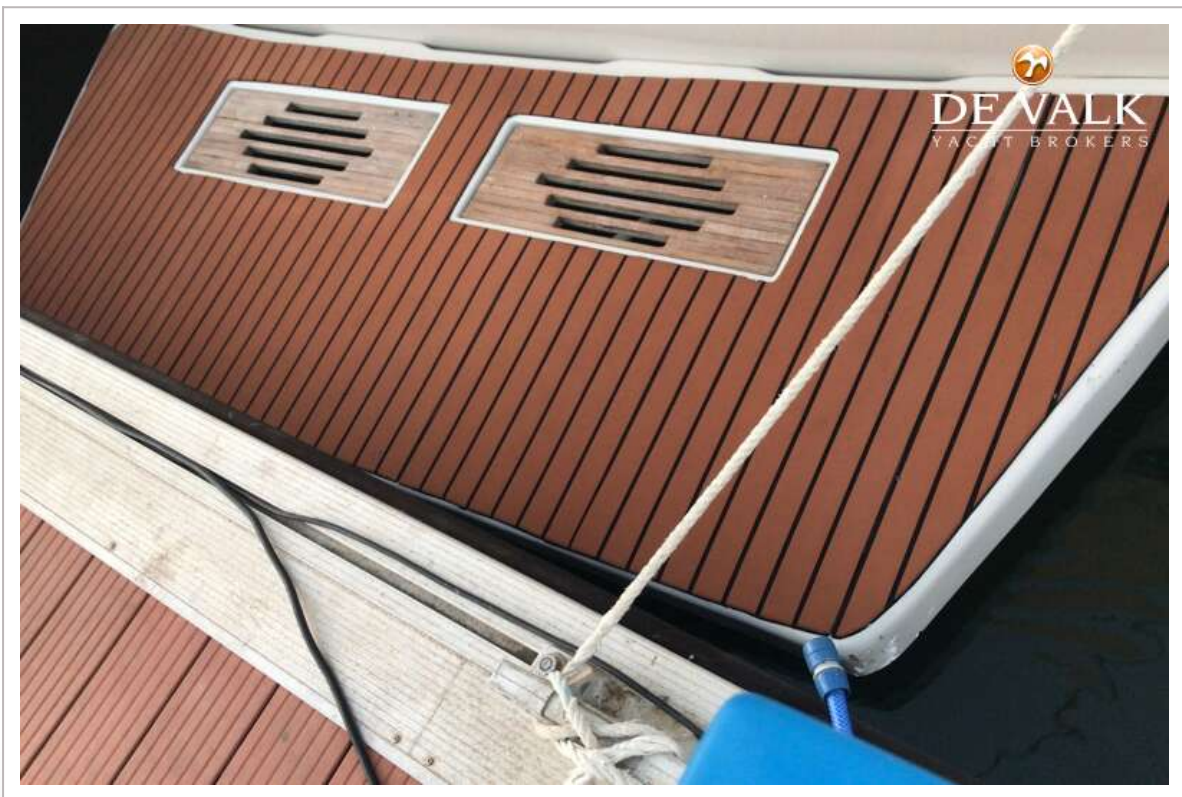
SEA RAY 340 SUNDANCER



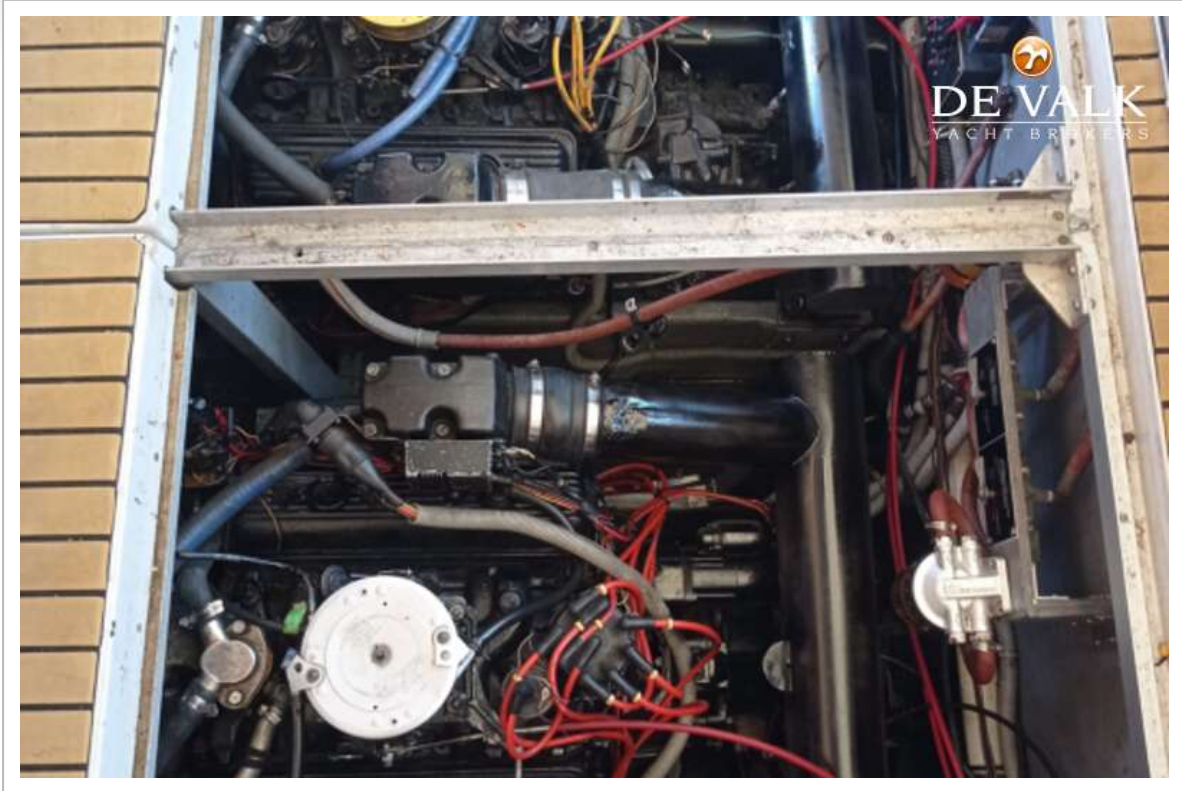
SEA RAY 340 SUNDANCER



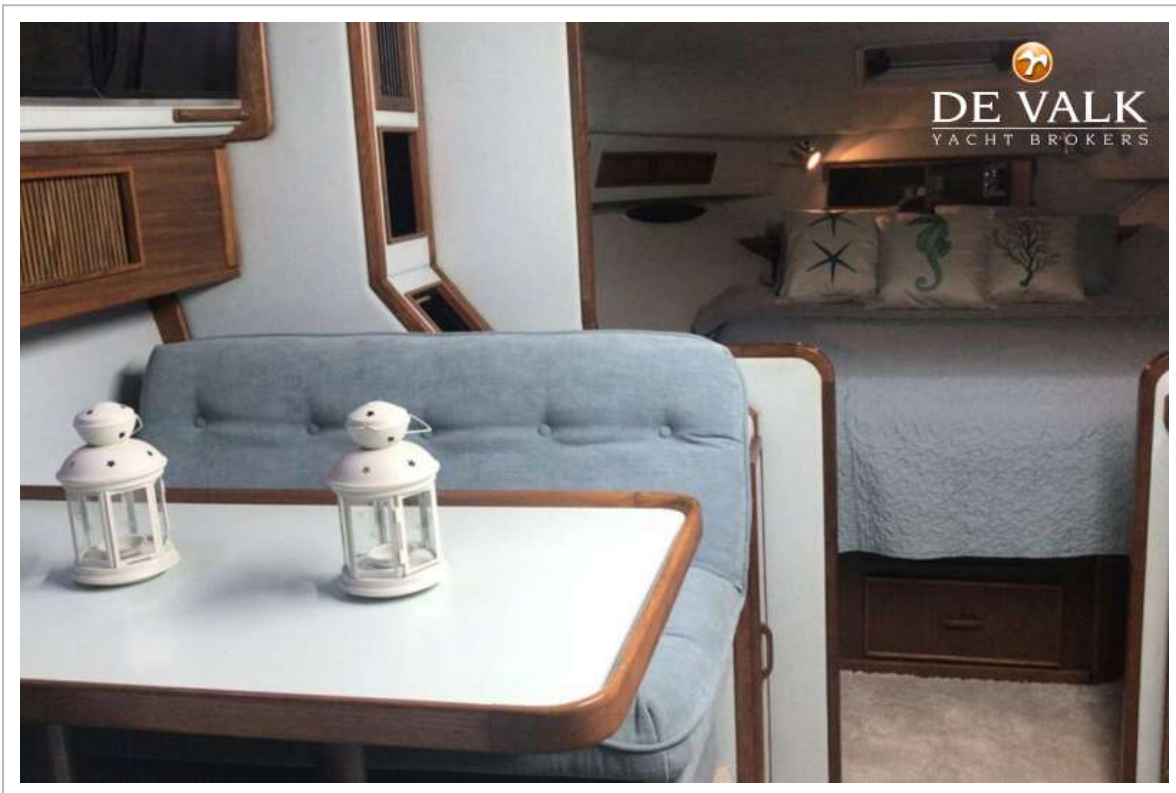
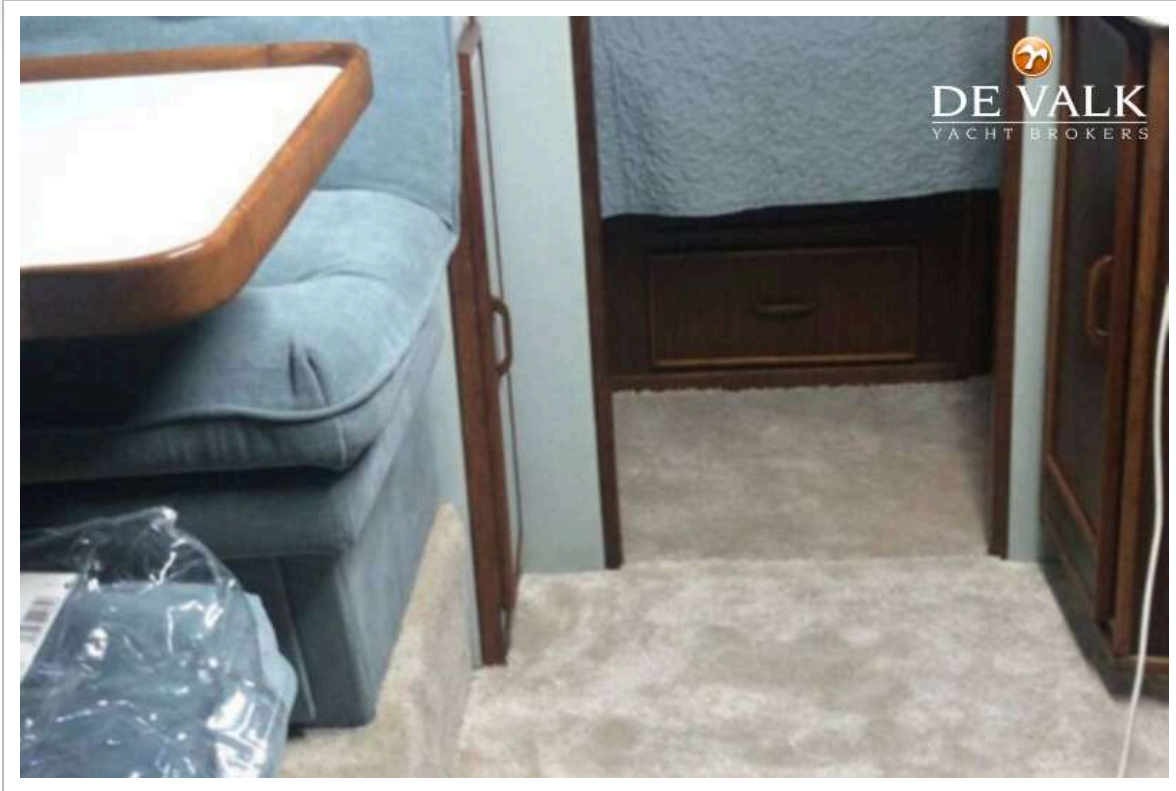
SEA RAY 340 SUNDANCER



SEA RAY 340 SUNDANCER



SEA RAY 340 SUNDANCER



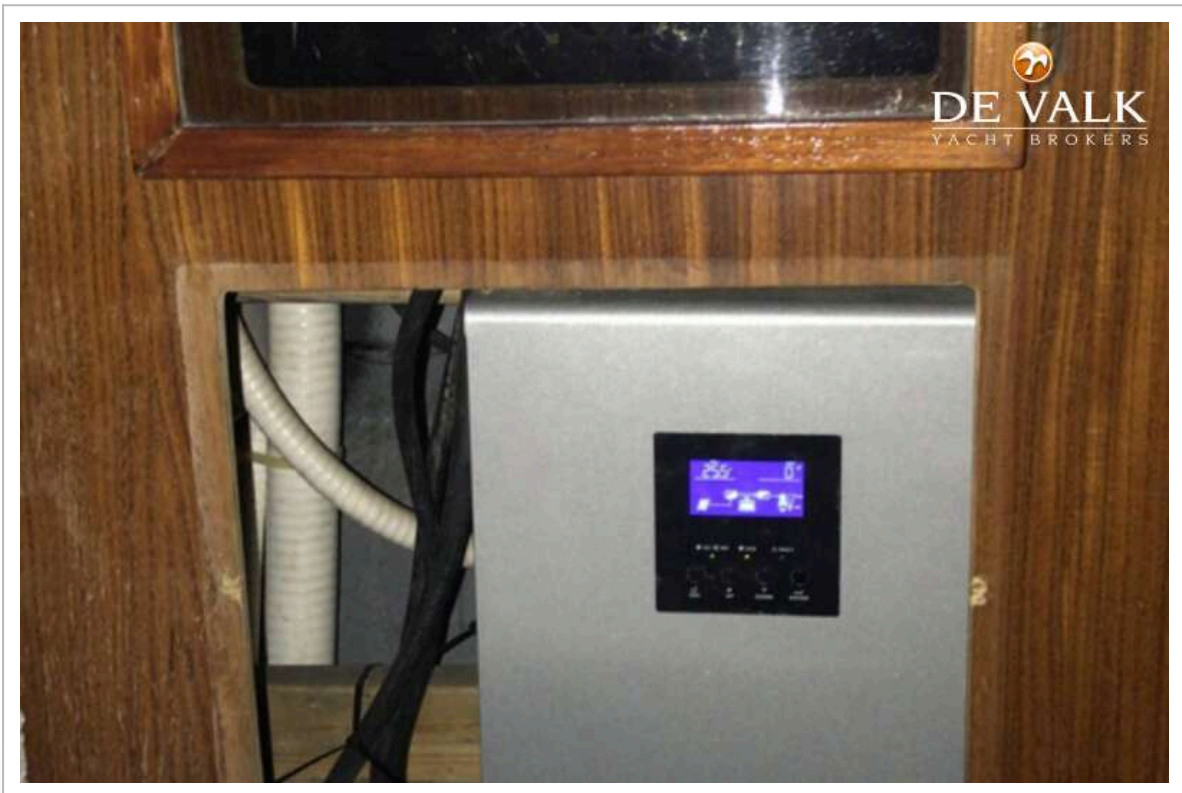
SEA RAY 340 SUNDANCER



SEA RAY 340 SUNDANCER



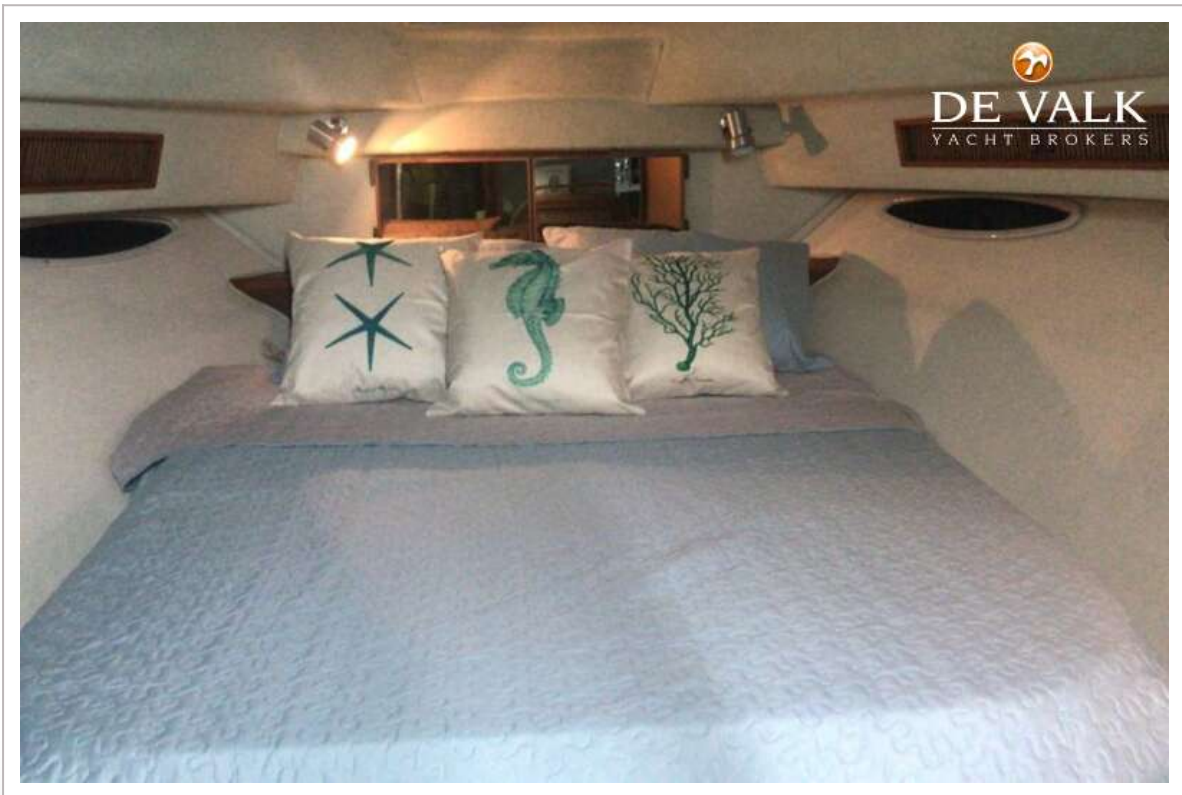
SEA RAY 340 SUNDANCER



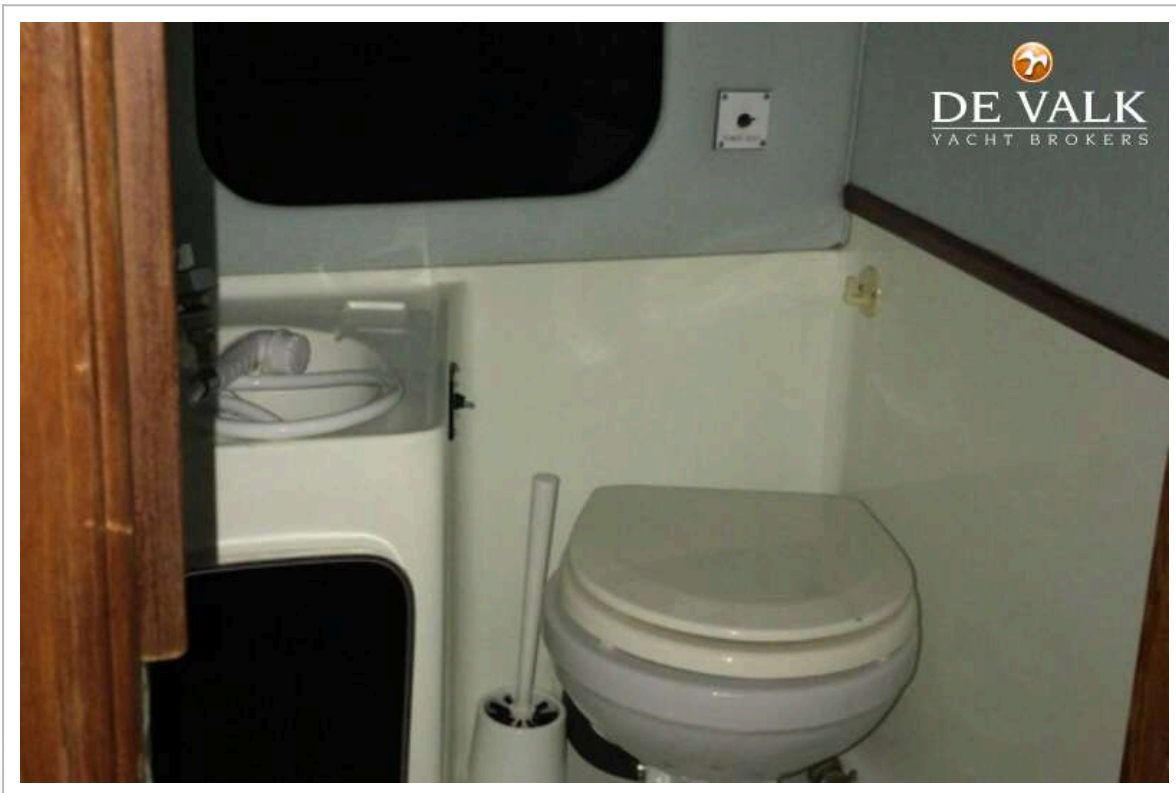
SEA RAY 340 SUNDANCER



SEA RAY 340 SUNDANCER



SEA RAY 340 SUNDANCER



SEA RAY 340 SUNDANCER

