



DE VALK
YACHT BROKERS



VAN DER HEIJDEN SUPERIOR FLY 2000



DE VALK
YACHT BROKERS

BROKER'S COMMENTS

This Van der Heijden Superior Fly 2000 is really something to behold. First owner, full service history documented, meticulously maintained and pretty much every option imaginable. She offers very spacious accommodations and sleeps 7 in 4 cabins. The master cabin and en suite are bigger than in most houses! The saloon, aft deck, flybridge and foredeck offer plenty of room for entertaining your guests. She was custom built with a steel hull and aluminum superstructure and she can run 25 knots if needed. The Van der Heijden Superior 2000 Fly is now available for viewing!

Nick Lanting

SPECIFICATIONS

Dimensions	20.70 x 5.60 x 1.30 (m)	Builder	Van der Heijden Yachts
Built	2011	Cabins	4
Material	Steel	Berths	7
Engine(s)	2 x FTP Iveco C13ENTM83.10 diesel	Hp/Kw	2 x 825.00 (hp), 607.20 (kw)
Asking price	sold (VAT)	Lying	at sales office

CONTACT

Sales office	De Valk Sint Annaland	Telephone	+31 166 601 000
Address	Koelhuisweg 4 4697 RM Sint Annaland The Netherlands	E-mail	sintannaland@devalk.nl

DISCLAIMER

These particulars are given in good faith as supplied but cannot be guaranteed.



GENERAL

Model	VAN DER HEIJDEN SUPERIOR FLY 2000
Type	motor yacht
LOA (m)	20,70
Beam (m)	5,60
Draft (m)	1,30
Air draft (m)	7,30
Air draft min (m)	5,35
Headroom (m)	2,02
Year built	2011
Launched	2012/07
Builder	Van der Heijden Yachts
Country	The Netherlands
Displacement (t)	48
CE norm	A
Hull material	steel
Hull colour	black
Hull shape	hard chine
Superstructure material	aluminium
Rubbing strake	stainless steel
Deck material	steel
Deck finish	synthetic teak
Superstructure deck finish	non-skid paint
Cockpit deck finish	synthetic teak
Antifouling (year)	2021 CopperCoat. uw-body completely sanded down
Window frame	stainless steel
Window material	double glazing
Deckhatch	yes
Portholes	stainless steel
Insulation	foam
Flybridge	yes



VAN DER HEIJDEN SUPERIOR FLY 2000

Flybridge cover	Separate covers for benches and seats and helm
Flybridge cockpit cover	yes
Flybridge suncover	yes
Radar arch	collapsible
Mast can be lowered	hydraulic
Fuel tank (litre)	polyethylene 1 x 4200
Level indicator (fuel tank)	yes
Freshwater tank (litre)	polyethylene 1 x 1000
Level indicator (freshwater)	yes
Blackwater tank (litre)	polyethylene 1 x 500
Level indicator (blackwater)	yes
Blackwater tank extraction	deck extraction + pump
Wheel steering	hydraulic
Inside helm position	yes
Flybridge helm position	hydraulic
More info on hull	Polished and waxed every year
More info on paintwork	Awlgrip original paint
Extra info	In winter storage every year
Extra info	CVO Certificate 02334589
Extra info	Seating area/sundeck on foredeck

ACCOMMODATION

Cabins	4
Berths	7
Crew cabin	yes
Crew berths	1 x
Interior	teak
Floor	carpet
Aft deck	yes
Saloon	yes
Headroom saloon (m)	2.02



VAN DER HEIJDEN SUPERIOR FLY 2000

Heating	central hot water Kabola HR500 10.7 kW, underfloor heating
Air-conditioning	single cycle airco In all cabins
Aft Cabin	yes
Dinette	yes
Sliding door to aft deck	yes
Galley	Aft end of saloon
Countertop	corian
Sink	stainless steel 2 x
Cooker	induction Whirlpool 4-burner
Extractor	yes
Microwave/oven combi	Bosch
Fridge	yes
Freezer	In utility room/crew cabin
Wine cooler	yes
Hot water system	on central heating
Water pressure system	electrical
Dishwasher	yes
Hot water tap	Quooker
Coffee maker	Nespresso
Crockery	yes
Owners cabin	French bed Located aft, headroom 1.95 m
Bed length (m)	2.10 x 1.80
Wardrobe	hanging/drawers/shelves
Bathroom	en suite Headroom 1.91 m, with electric towel rack
Toilet	en suite
Toilet system	electric
Wash basin	in the bathroom
Shower	en suite Headroom 1.93 m
Extra info	Samsung TV 81 cm
Guest cabin 1	French bed Located forward, headroom 1.99 m
Bed length (m)	2.10 x 1.60
Wardrobe	hanging/drawers/shelves



VAN DER HEIJDEN SUPERIOR FLY 2000

Bathroom	en suite Headroom 2.07 m, with electric towel rack
Toilet	en suite
Toilet system	electric
Wash basin	in the bathroom
Shower	en suite Headroom 2.09 m
Extra info	Samsung TV 81 cm
Guest cabin 2	twin single Located to port, headroom 2.07 m
Bed length (m)	2.00 x 0.70 (2 x)
Wardrobe	hanging
Bathroom	shared With en suite of forward cabin
Guest cabin 3	single bed Headroom 1.95 m
Bed length (m)	2.10 x 0.75
Wardrobe	shelves
Wash basin	in the cabin
Washing machine/dryer combi	Bosch, in crew cabin/utility room
Flybridge	yes
Wet bar	On flybridge, with sink and fridge
Extra info	Safe in aft cabin hanging locker
Extra info	Horizontal blinds in saloon

MACHINERY

No of engines	2
Make	FTP Iveco
Type	C13ENTM83.10
HP	825
kW	607.20
Fuel	diesel
Year installed	2011
Maximum speed (kn)	25
Cruising speed (kn)	18
Engine hours	627



Engine cooling system	freshwater heat exchanger
Drive	shaft
Shaft seal	yes
Engine controls	electrical & bowden cable Hydronautica EMC
Gearbox	hydraulic
Bowthruster	hydraulic
Sternthruster	hydraulic
Exhaust	watercooled
Thrust bearing	yes
Propeller type	fixed
Propeller blades	5
Propeller shaft material	stainless steel
Shaft lubrication	SeaTorque BOSS System
Electric bilge pump	yes
Electrical installation	12 V, 24 V, 220 V
Generator	silent separator Onan MDK BK/L/M/N 13.5 kW
Running hours generator	357
Batteries	8 x
Start battery	4 x AGM Deep Cycle 250-12 (2021)
Service battery	4 x AGM Deep Cycle 250-12 (2021)
Battery monitor	Victron Multi Control
Battery charger/inverter	Victron Quattro 24/5000/120 (2021)
Diode battery combiners	yes
Shorepower	with cable
Insulation transformer	Victron 3600
Watermaker	Never used, so needs service
Stabilizers	0-speed DMS MagnusMaster (2016)
Extra info	Hydronautica RMC remote control + joystick
Extra info	Workbench in engineroom
Extra info	Engineroom headroom 1.80 m



NAVIGATION

Electric compass	In autopilot
Multi control display	Garmin GMI10
Depth sounder	Garmin
Log	Garmin
Windset	Garmin
Repeater	At flybridge helm, autopilot and multi display
VHF	Garmin GHS10 (2 x)
VHF handheld	Icom
Autopilot	Garmin GHC10
Rudder angle indicator	In autopilot
Radar	Garmin HD
GPS	Garmin
Plotter	Garmin 7015 lower helm, 7012 flybridge helm
PC connection	For AIS
Electronic chart(s)	yes
AIS transceiver	yes
EPIRB	yes
Camera	Aft facing and in engine room
Navigation lights	yes
Searchlight	ITT Jabsco

EQUIPMENT

Fixed windscreen	yes
Bimini	On flybridge
Cockpit cushions	yes
Cockpit table	Fixed
Bathing platform	Hi-lo, hydraulic
Boarding ladder	stainless steel
Gangway	Opacmare, hydraulic
Deck shower	yes



Anchor	Pool Stainless steel
Anchor chain	50 m, stainless steel
Windlass	electrical Lofrans
Capstan	On windlass
Deck wash	Baudoin osmosis installation
Dinghy	Williams 385 Jet Tender (2012)
Sea railing	yes
Grab rail (superstructure)	stainless steel
Railing side opening gates	Both sides, with s/s ladder
Pulpit	yes
Life raft	Eurovinil
Life raft (pers)	container 6
Last life raft survey	Valid until 2024/03
Lifejackets	yes
Lifebuoy	yes
Wiper	3 x, Exalto pantograph
Window ventilator	Outlets from central heating
Horn	yes
Fenders	yes
Mooring lines	yes
Spare parts	yes
TV	Samsung 81 cm in saloon on TV-lift
TV receiver	Satellite TV receiver
TracVision ball	TravelVision G6 + dummy dome
Radio-cd player	Jensen JMS2212 at flybridge helm
DVD player	Philips, in saloon
Surround Sound System	In saloon
Cockpit speakers	On flybridge and aft deck
Speakers in salon	5 x
Clock - barometer	yes
Fire extinguisher	yes
Latest extinguisher survey	yes



Extinguisher in engine room	yes
Auto extinguisher system	yes



VAN DER HEIJDEN SUPERIOR FLY 2000









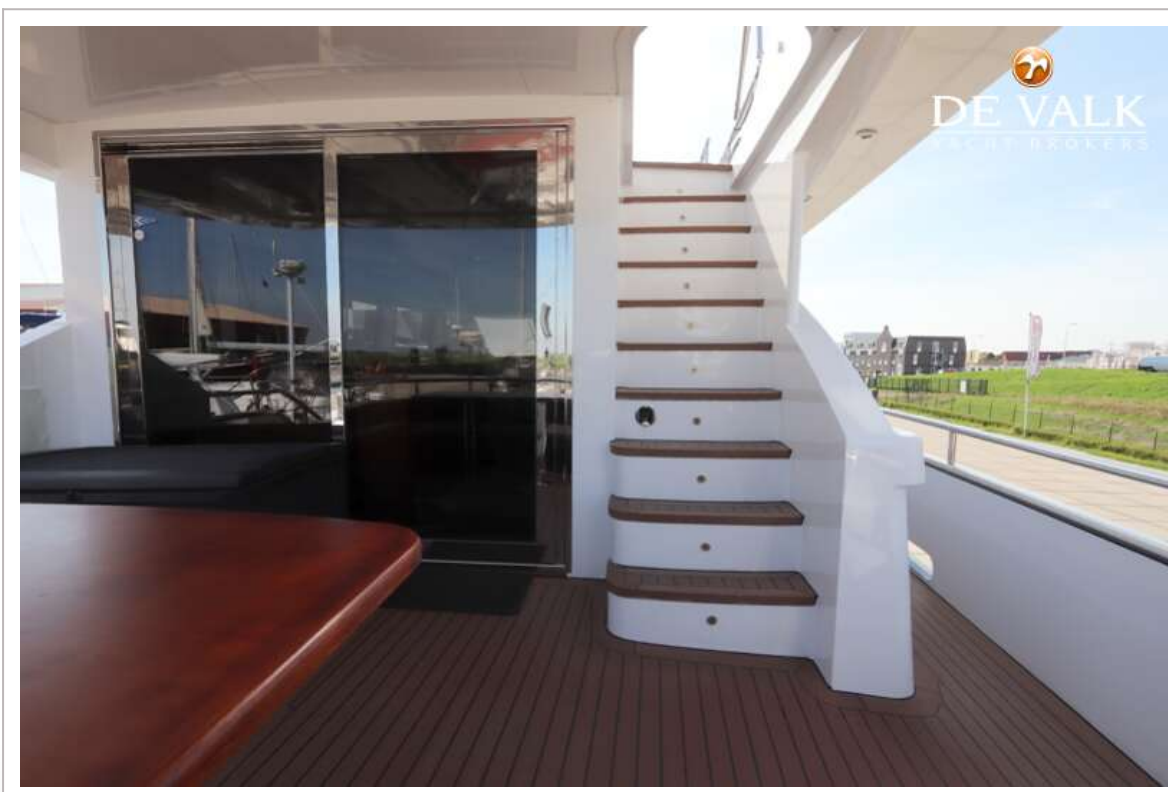
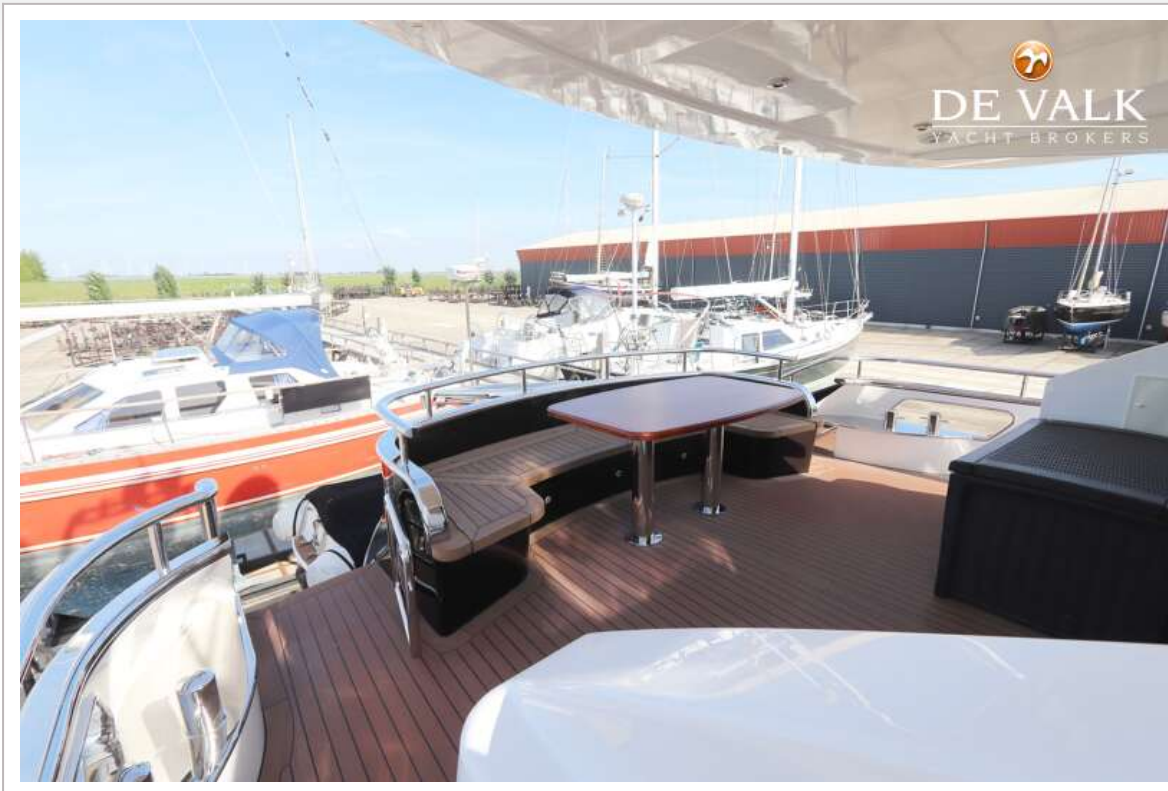
VAN DER HEIJDEN SUPERIOR FLY 2000



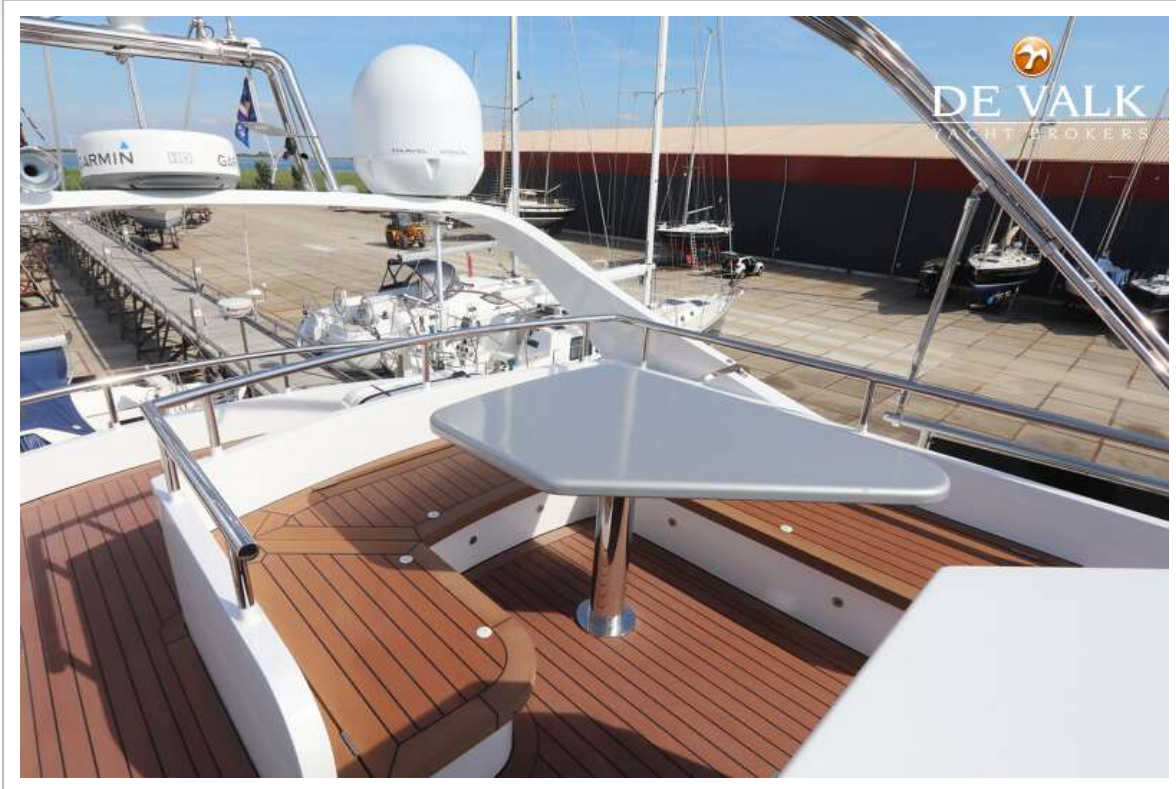
VAN DER HEIJDEN SUPERIOR FLY 2000



VAN DER HEIJDEN SUPERIOR FLY 2000



VAN DER HEIJDEN SUPERIOR FLY 2000



VAN DER HEIJDEN SUPERIOR FLY 2000



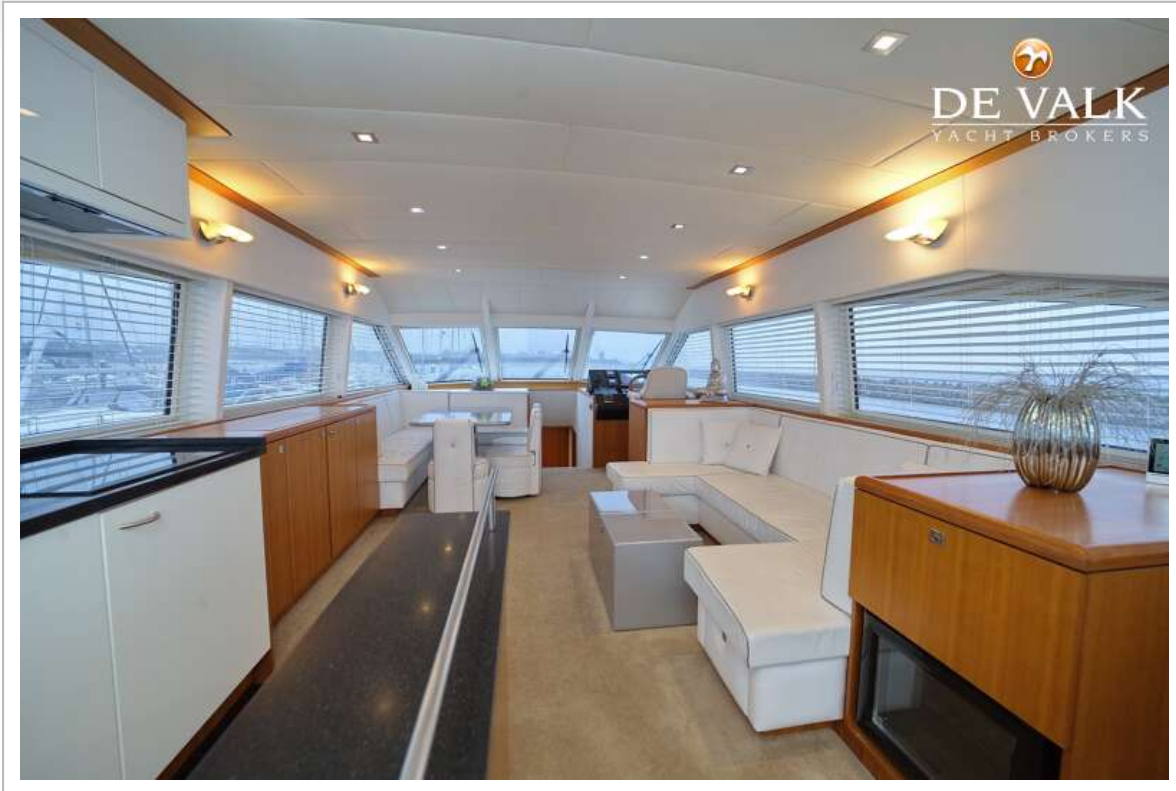
VAN DER HEIJDEN SUPERIOR FLY 2000



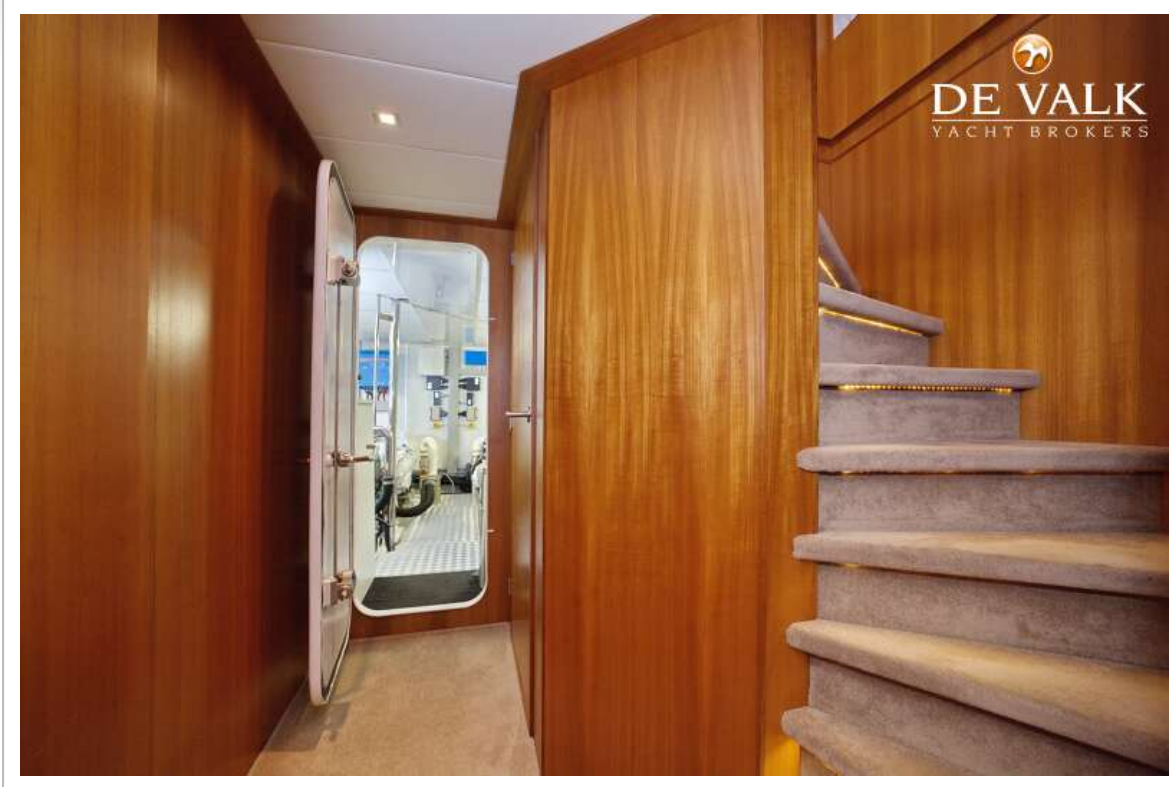
VAN DER HEIJDEN SUPERIOR FLY 2000

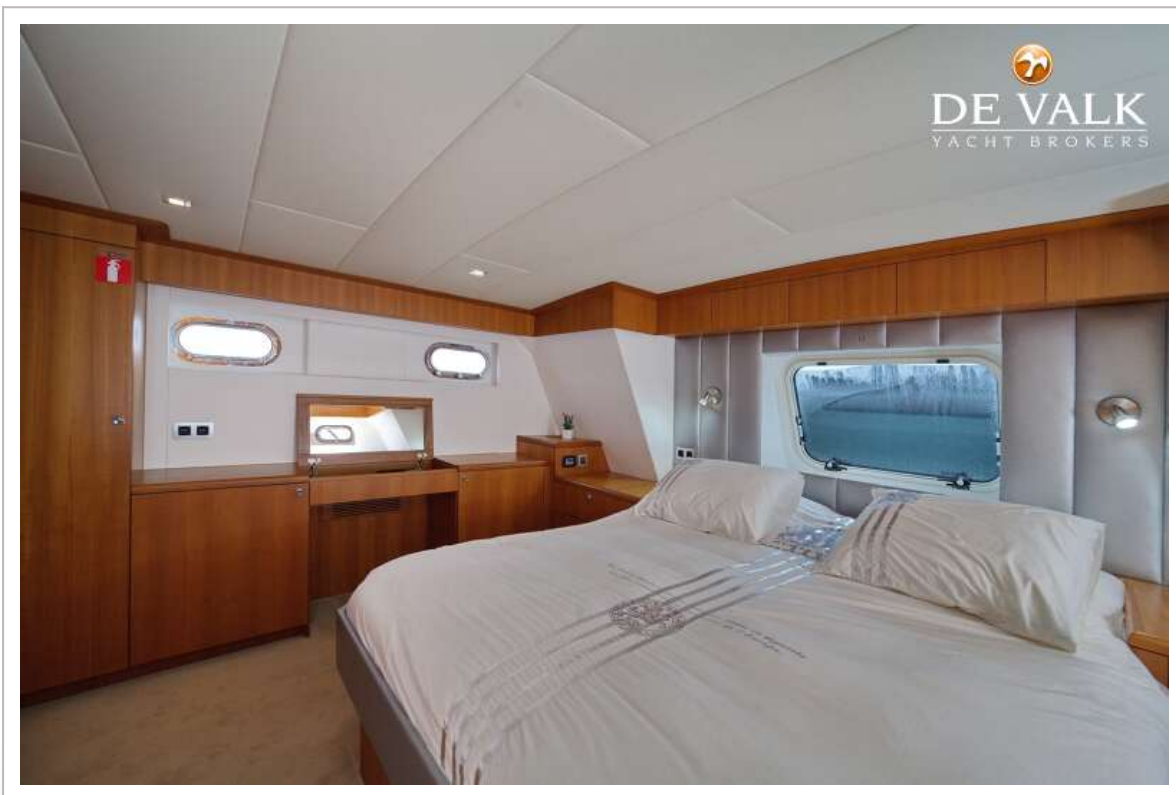
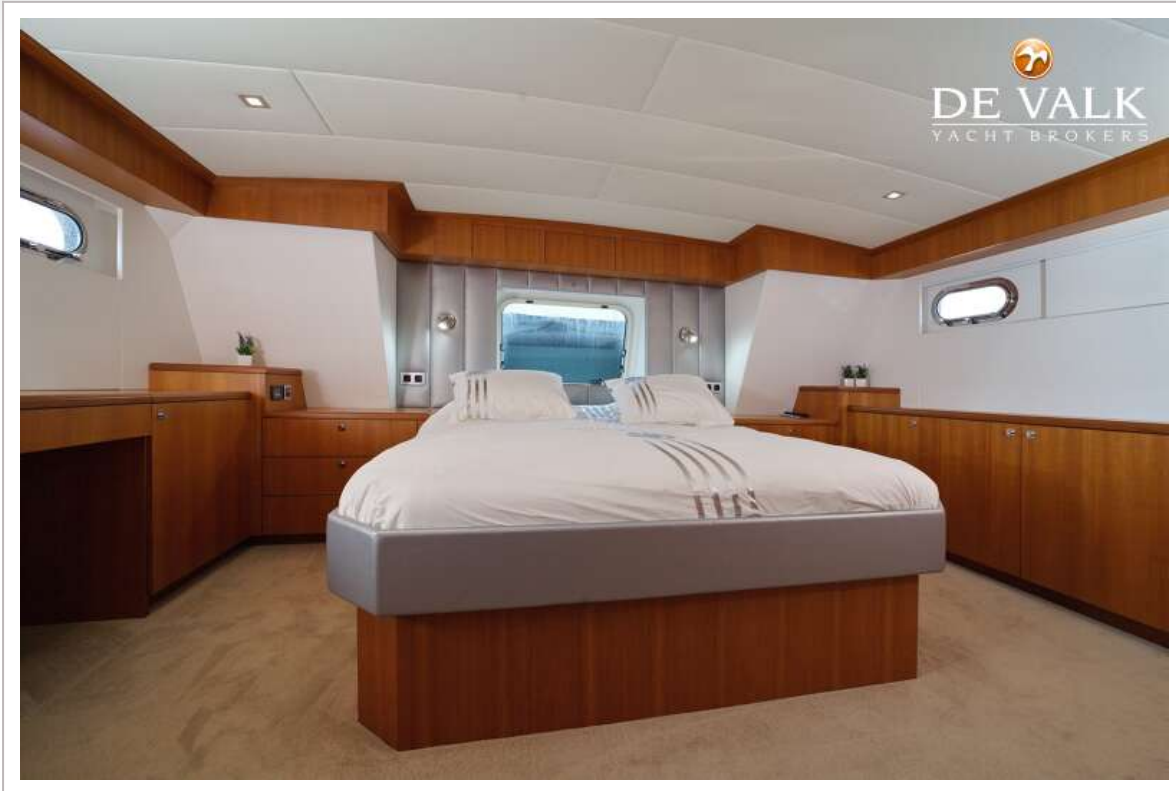


VAN DER HEIJDEN SUPERIOR FLY 2000



VAN DER HEIJDEN SUPERIOR FLY 2000

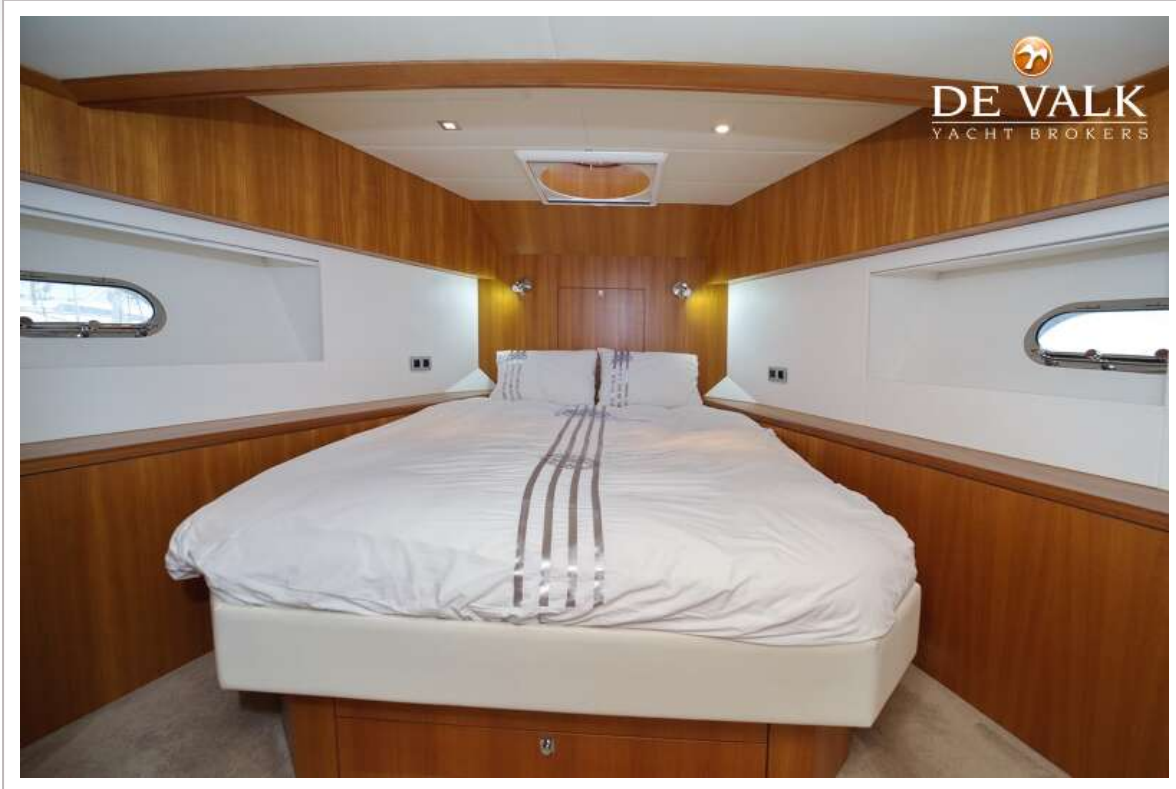


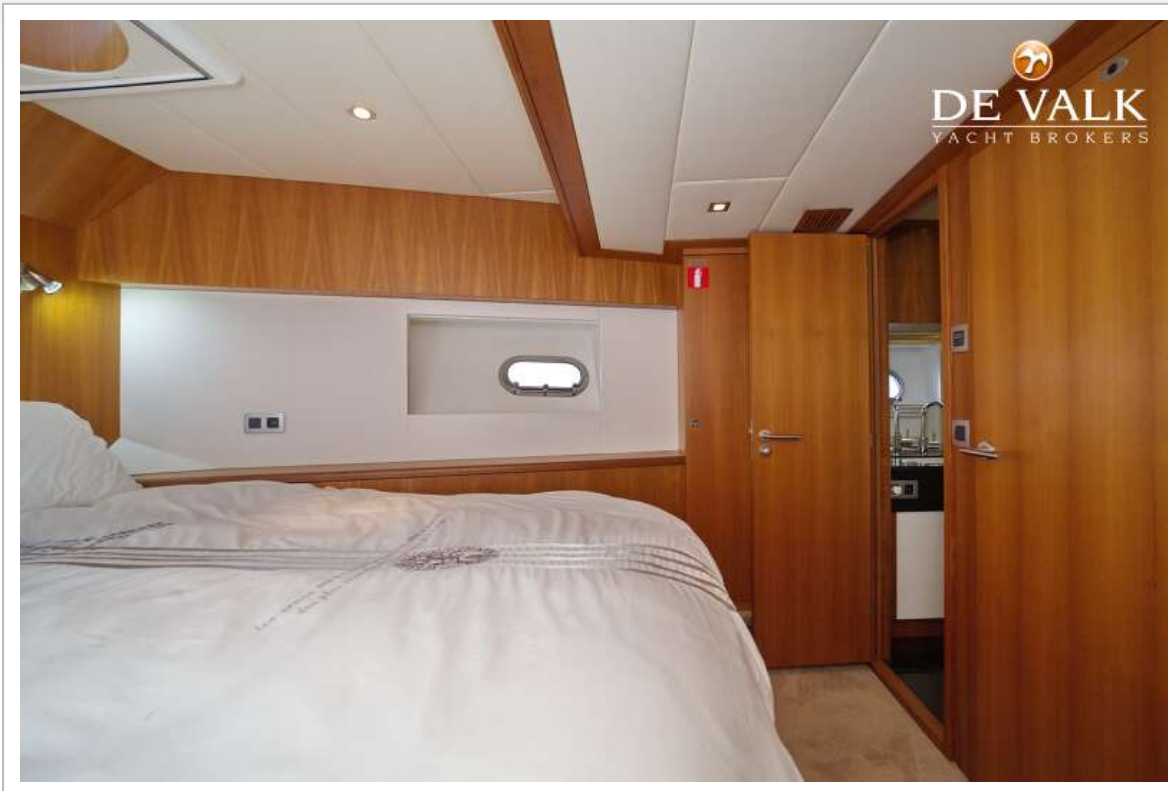




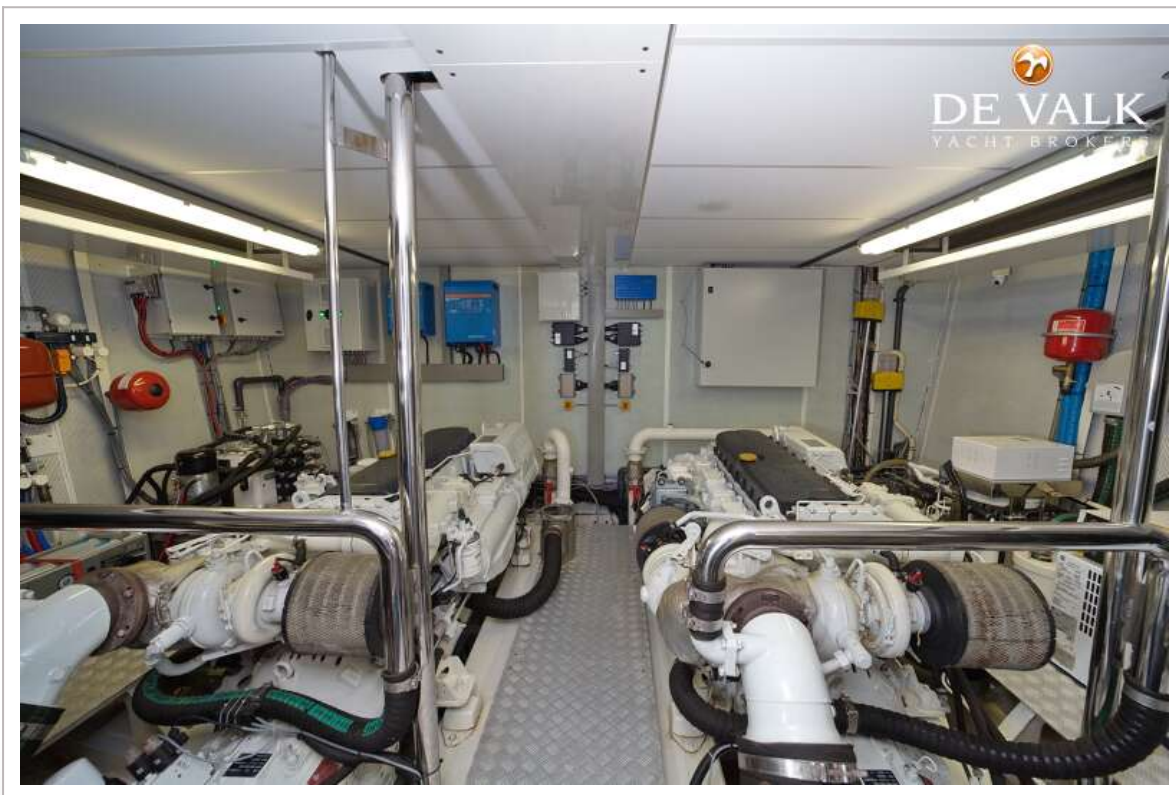
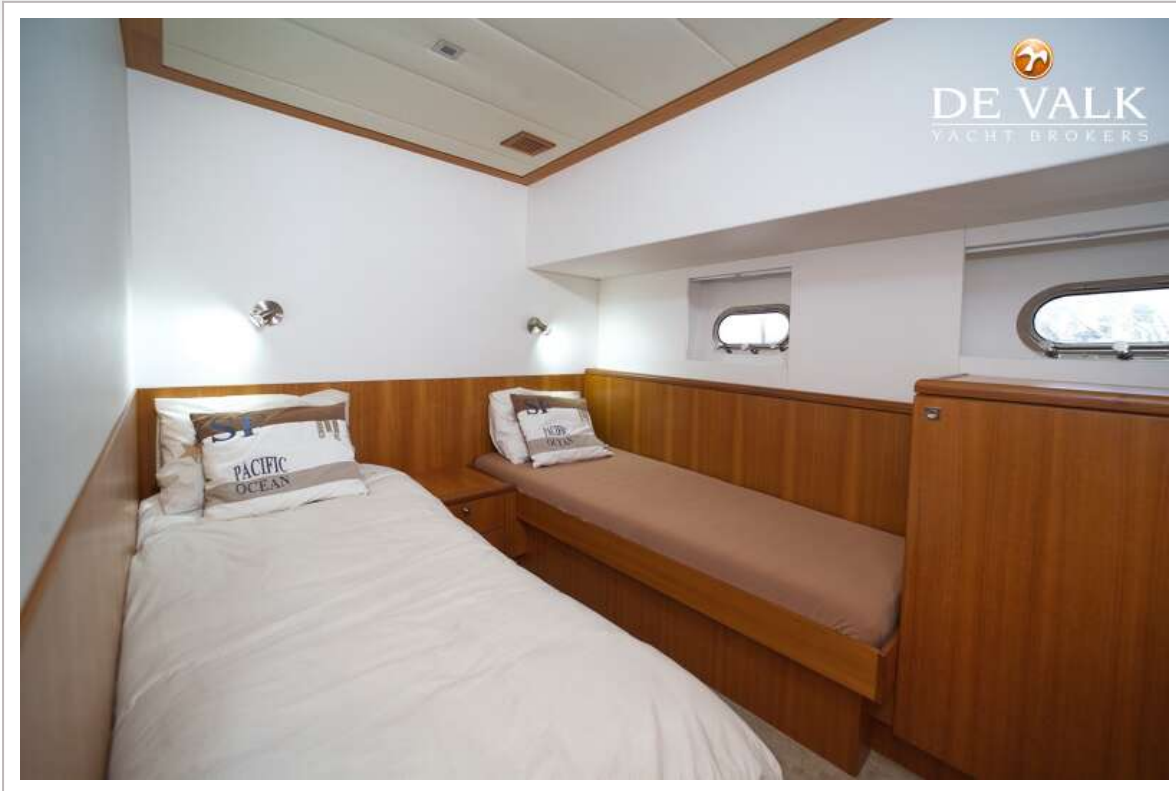


VAN DER HEIJDEN SUPERIOR FLY 2000

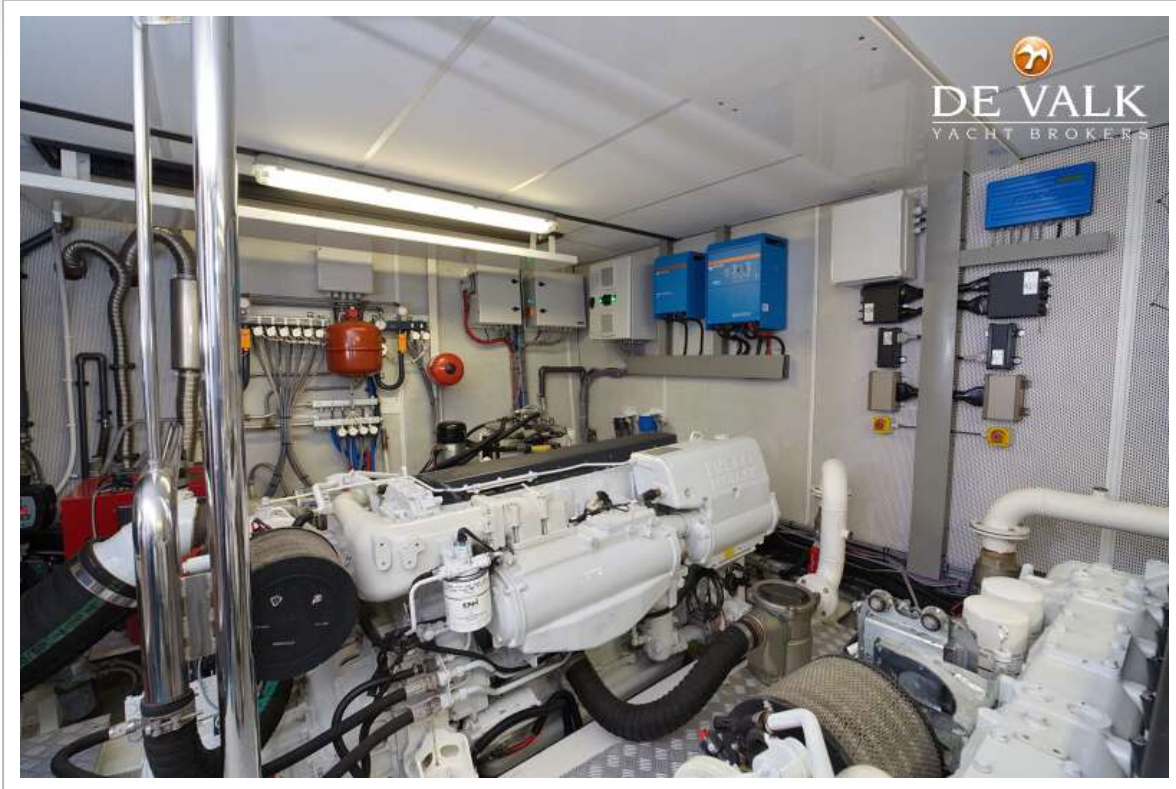




VAN DER HEIJDEN SUPERIOR FLY 2000



VAN DER HEIJDEN SUPERIOR FLY 2000



VAN DER HEIJDEN SUPERIOR FLY 2000

