



DE VALK  
YACHT BROKERS



## ALMKOTTER 1330 AK



DE VALK  
YACHT BROKERS

# ALMKOTTER 1330 AK

## BROKER'S COMMENTS

This richly equipped Alm Kotter 13.30 was built and delivered in 2001. The ship is in well-maintained condition and has many features. With a good Perkins engine with 185 hp, bow and stern thruster, the ship is easy to manoeuvre. The presence of a stove, generator and double glazing makes it possible to live or stay on board for a long time. Make an appointment to view this beautiful "Spiegelkotter" in Loosdrecht.

*Sjoerd Paddenburg*

## SPECIFICATIONS

<b>Dimensions</b>	14.09 x 4.35 x 1.27 (m)	<b>Builder</b>	Alm Shipyard
<b>Built</b>	2001	<b>Cabins</b>	3
<b>Material</b>	Steel	<b>Berths</b>	6
<b>Engine(s)</b>	1 x Perkins M 185 C diesel	<b>Hp/Kw</b>	185.00 (hp), 135.98 (kw)
<b>Asking price</b>	sold (VAT )	<b>Lying</b>	at sales office

## CONTACT

<b>Sales office</b>	De Valk Loosdrecht	<b>Telephone</b>	+31 35 582 90 30
<b>Address</b>	't Breukeleveense Meentje 6 1231 LM Loosdrecht / Wijdmeren The Netherlands	<b>E-mail</b>	loosdrecht@devalk.nl

## DISCLAIMER

These particulars are given in good faith as supplied but cannot be guaranteed.



# ALMKOTTER 1330 AK

## GENERAL

<b>Model</b>	ALMKOTTER 1330 AK
<b>Type</b>	motor yacht
<b>LOA (m)</b>	14,09
<b>LWL (m)</b>	13,30
<b>Beam (m)</b>	4,35
<b>Draft (m)</b>	1,27
<b>Air draft (m)</b>	6,85
<b>Air draft min (m)</b>	2,95
<b>Year built</b>	2001
<b>Builder</b>	Alm Shipyard
<b>Country</b>	The Netherlands
<b>CE norm</b>	B
<b>Hull material</b>	steel
<b>Hull colour</b>	brown
<b>Hull shape</b>	multi hard chine
<b>Superstructure material</b>	steel
<b>Rubbing strake</b>	rubber
<b>Deck material</b>	steel
<b>Deck finish</b>	teak
<b>Cockpit deck finish</b>	teak
<b>Antifouling (year)</b>	yes
<b>Window frame</b>	aluminium
<b>Window material</b>	double glazing
<b>Deckhatch</b>	yes
<b>Portholes</b>	aluminium
<b>Fuel tank (litre)</b>	steel 1500
<b>Freshwater tank (litre)</b>	stainless steel 2x 550
<b>Blackwater tank (litre)</b>	stainless steel 350
<b>Blackwater tank extraction</b>	deck extraction + pump
<b>Outside helm position</b>	hydraulic



## ACCOMMODATION

<b>Cabins</b>	3
<b>Berths</b>	6
<b>Interior</b>	teak
<b>Floor</b>	teak and holly
<b>Aft deck</b>	yes
<b>Saloon</b>	yes
<b>Headroom saloon (m)</b>	2,10 +/-
<b>Heating</b>	Kabola 14Kw
<b>Aft Cabin</b>	yes
<b>Dinette</b>	yes
<b>Opening door to cockpit</b>	yes
<b>Galley</b>	yes
<b>Sink</b>	stainless steel
<b>Cooker</b>	electric Pelgrim 4 burners
<b>Microwave/oven combi</b>	Whirlpool combi steam 5
<b>Fridge</b>	yes
<b>Freezer</b>	Liebherr
<b>Hot water system</b>	yes
<b>Water pressure system</b>	electrical
<b>Owners cabin</b>	double bed
<b>Wardrobe</b>	hanging/drawers/shelves
<b>Bathroom</b>	en suite
<b>Toilet</b>	en suite
<b>Toilet system</b>	electric
<b>Wash basin</b>	in the bathroom
<b>Shower</b>	en suite
<b>Guest cabin 1</b>	bunk bed
<b>Wardrobe</b>	hanging and drawers
<b>Guest cabin 2</b>	v-bed
<b>Wardrobe</b>	hanging and shelves



<b>Bathroom</b>	shared
<b>Toilet</b>	shared
<b>Toilet system</b>	electric
<b>Wash basin</b>	in the bathroom
<b>Shower</b>	shared
<b>Washing machine</b>	Candy Alice

## MACHINERY

<b>No of engines</b>	1
<b>Make</b>	Perkins
<b>Type</b>	M 185 C
<b>HP</b>	185
<b>kW</b>	135.98
<b>Fuel</b>	diesel
<b>Year installed</b>	2001
<b>Maximum speed (kn)</b>	8 kn
<b>Engine hours</b>	2365
<b>Engine cooling system</b>	freshwater heat exchanger
<b>Drive</b>	shaft
<b>Engine controls</b>	yes
<b>Gearbox</b>	hydraulic
<b>Bowthruster</b>	electric Max Power
<b>Sternthruster</b>	electric Max Power
<b>Exhaust</b>	watercooled
<b>Propeller type</b>	fixed
<b>Propeller shaft material</b>	stainless steel
<b>Electric bilge pump</b>	yes
<b>Generator</b>	wet exhaust Kohler 8 kW
<b>Running hours generator</b>	396
<b>Start battery</b>	yes
<b>Service battery</b>	yes



<b>Generator battery</b>	yes
<b>Battery monitor</b>	Mastervolt
<b>Battery charger</b>	Mastervolt 24/50
<b>Inverter</b>	Mastervolt 24/2500
<b>Shorepower</b>	with cable

## NAVIGATION

<b>Electric compass</b>	Raytheon ST60
<b>Depth sounder/log</b>	Raytheon ST60 (Log defect)
<b>Autopilot</b>	Raytheon ST60
<b>Rudder angle indicator</b>	Raytheon ST60
<b>Plotter</b>	Raytheon RL80C
<b>Navigation lights</b>	yes

## EQUIPMENT

<b>Fixed windscreen</b>	yes
<b>Sprayhood</b>	yes
<b>Cockpit cover</b>	yes
<b>Bimini</b>	yes
<b>Cockpit cushions</b>	yes
<b>Bathing platform</b>	yes
<b>Boarding ladder</b>	stainless steel
<b>Anchor</b>	yes
<b>Windlass</b>	electrical Vetus
<b>Deck wash</b>	yes
<b>Davits</b>	stainless steel
<b>Davits controls</b>	electrical
<b>Sea railing</b>	yes
<b>Grab rail (superstructure)</b>	stainless steel
<b>Wiper</b>	yes
<b>Horn</b>	yes



<b>Fenders</b>	yes
<b>Mooring lines</b>	yes
<b>TV</b>	Samsung with electrical lift



# ALMKOTTER 1330 AK





# ALMKOTTER 1330 AK

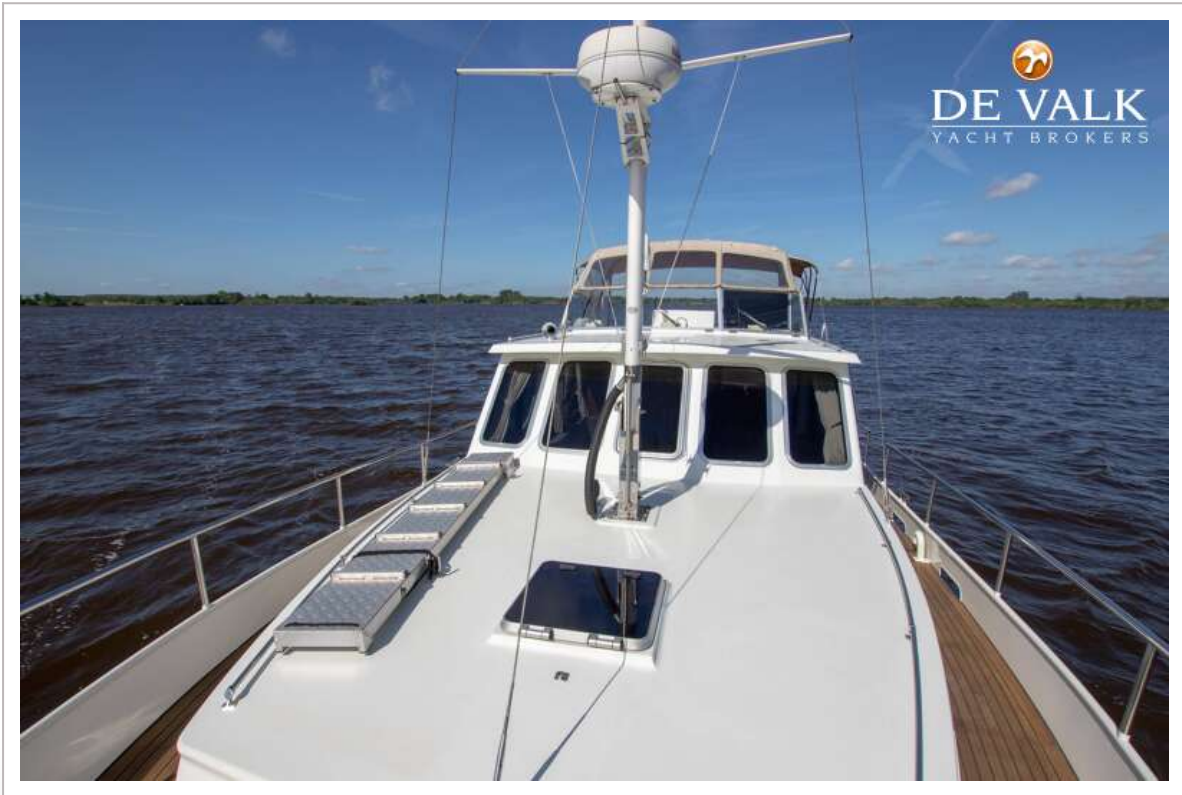


# ALMKOTTER 1330 AK





# ALMKOTTER 1330 AK

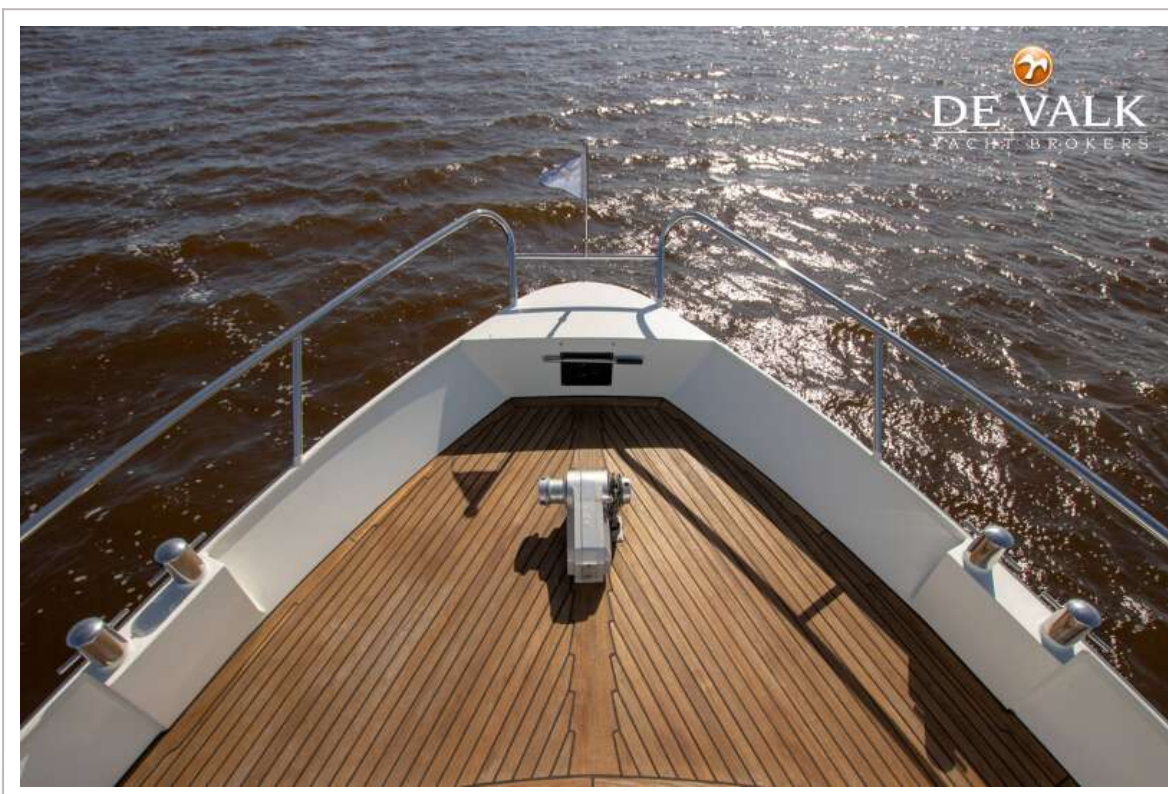


# ALMKOTTER 1330 AK





# ALMKOTTER 1330 AK

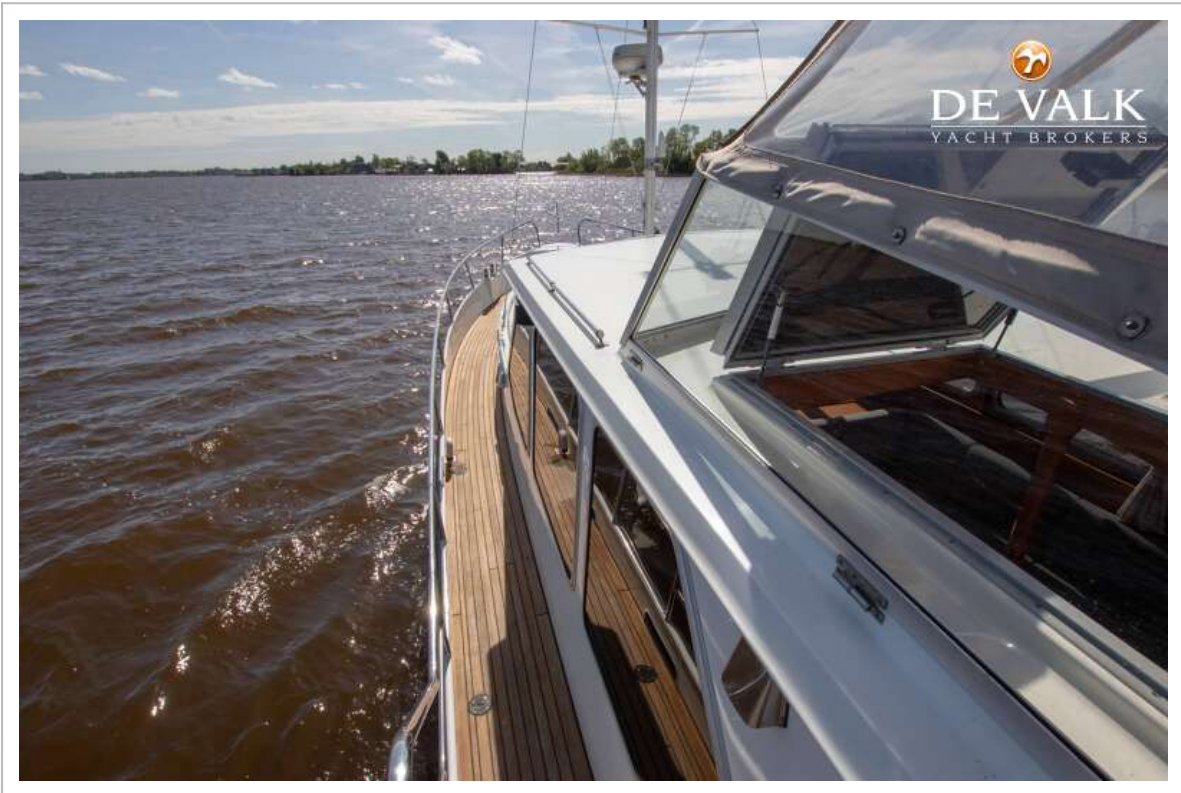




# ALMKOTTER 1330 AK



# ALMKOTTER 1330 AK



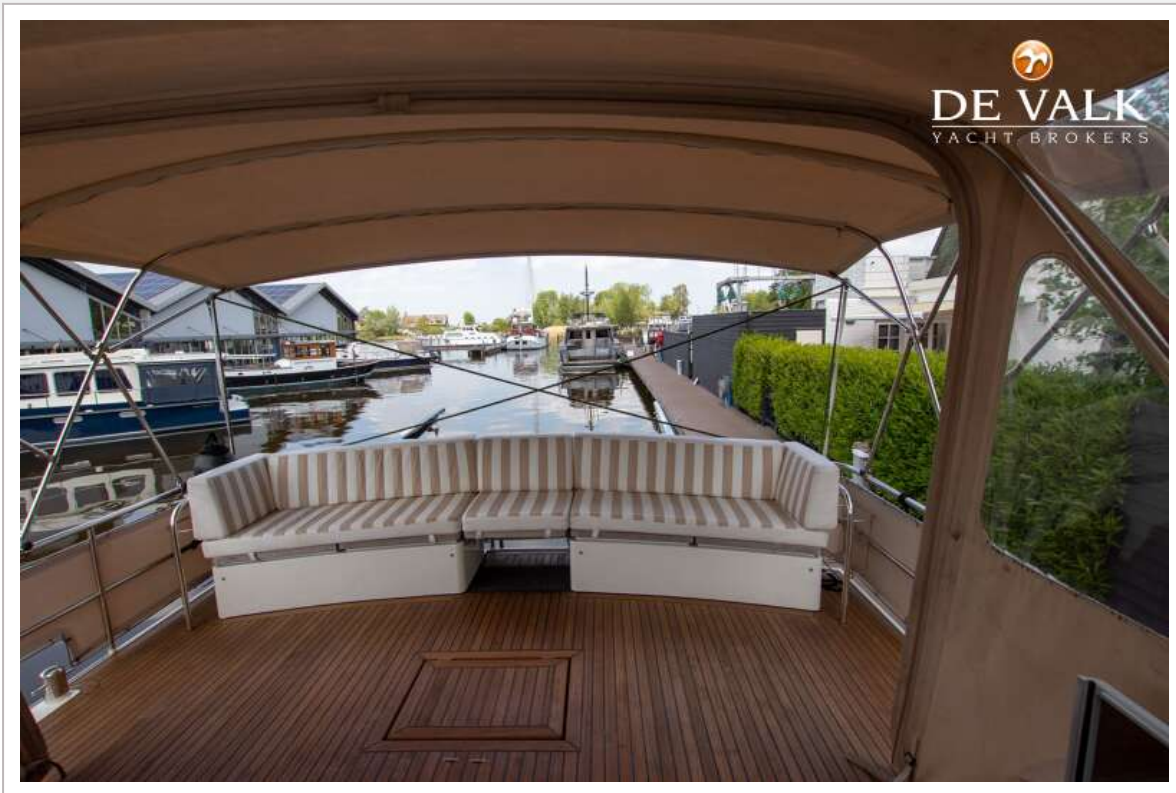


# ALMKOTTER 1330 AK

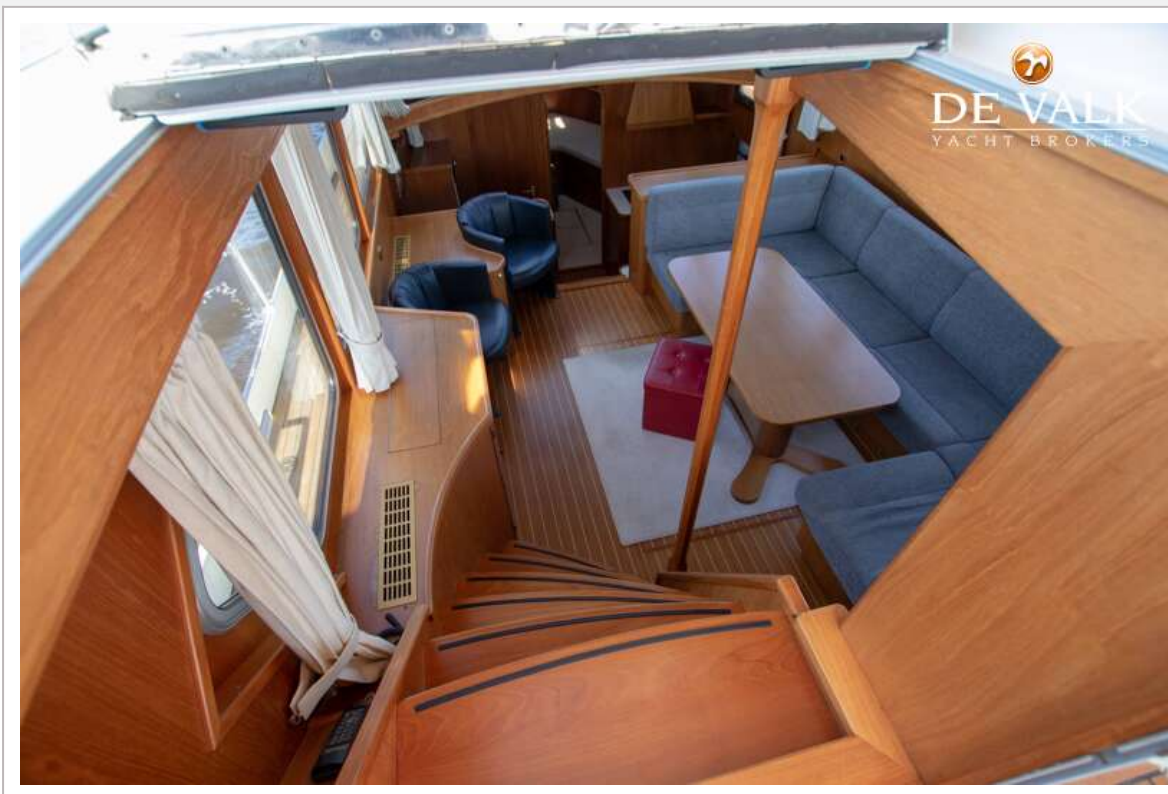




# ALMKOTTER 1330 AK



# ALMKOTTER 1330 AK





# ALMKOTTER 1330 AK

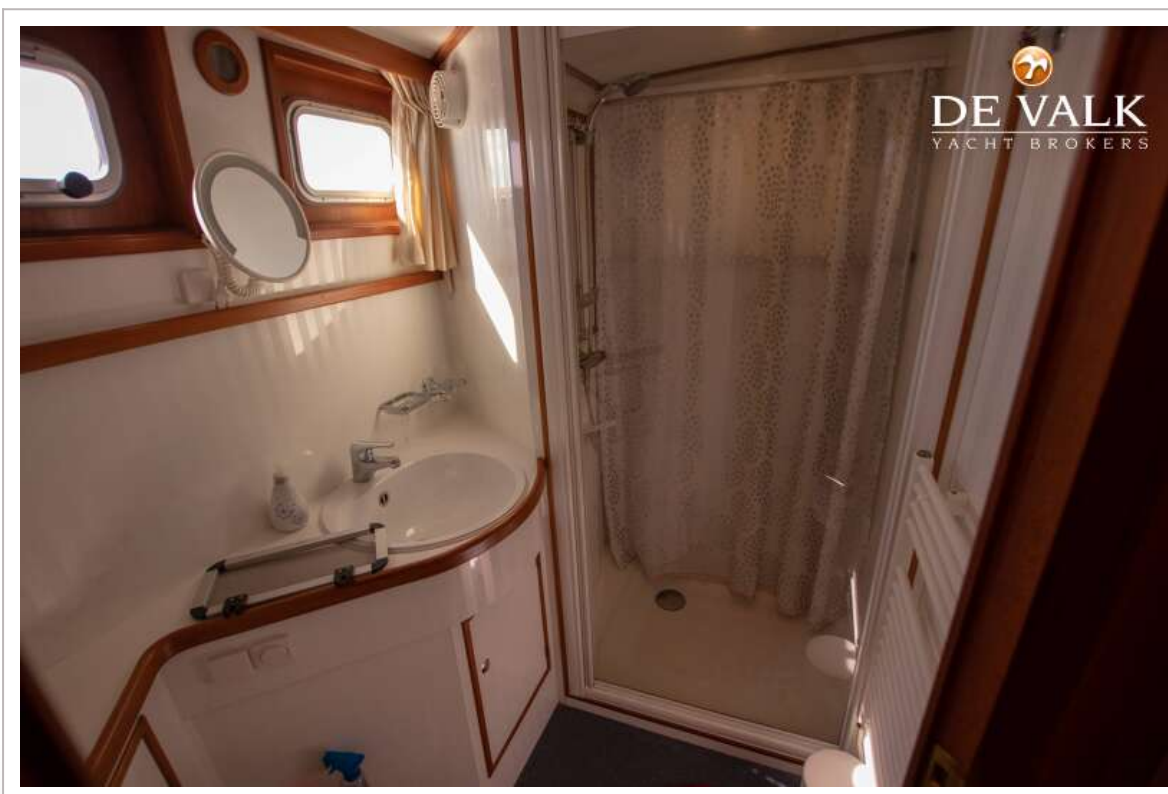


# ALMKOTTER 1330 AK

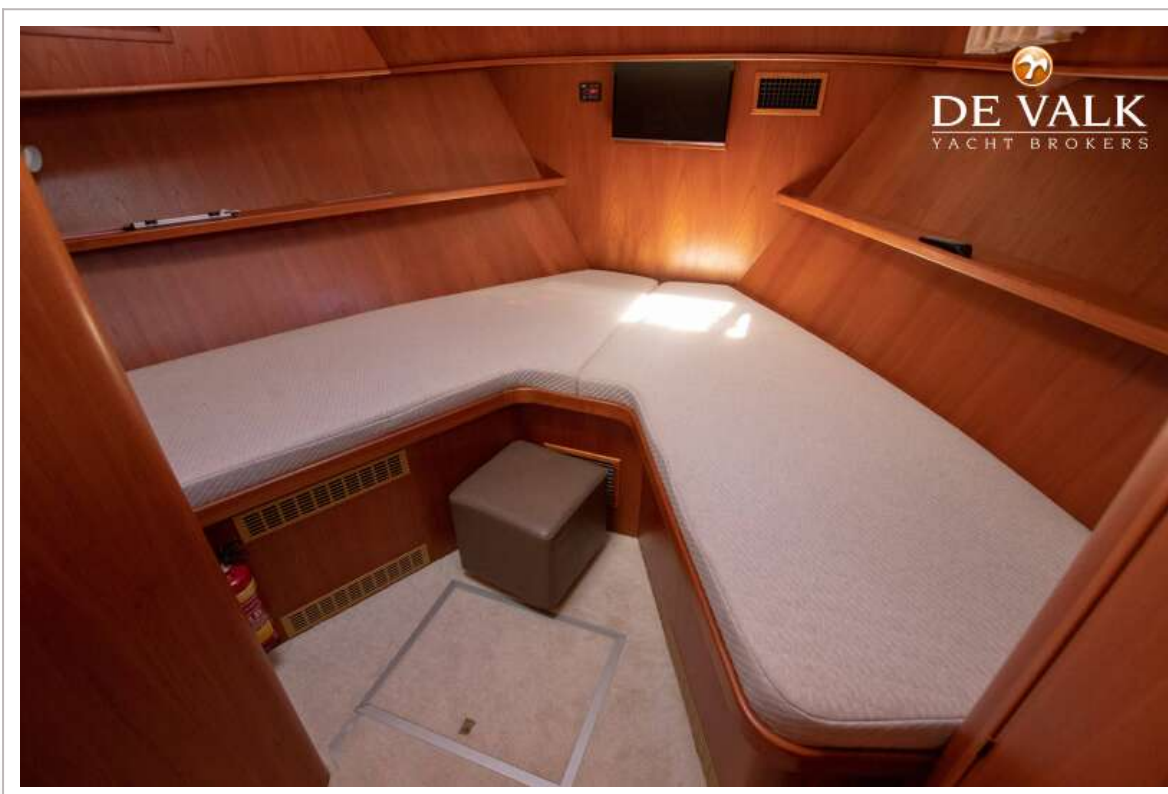
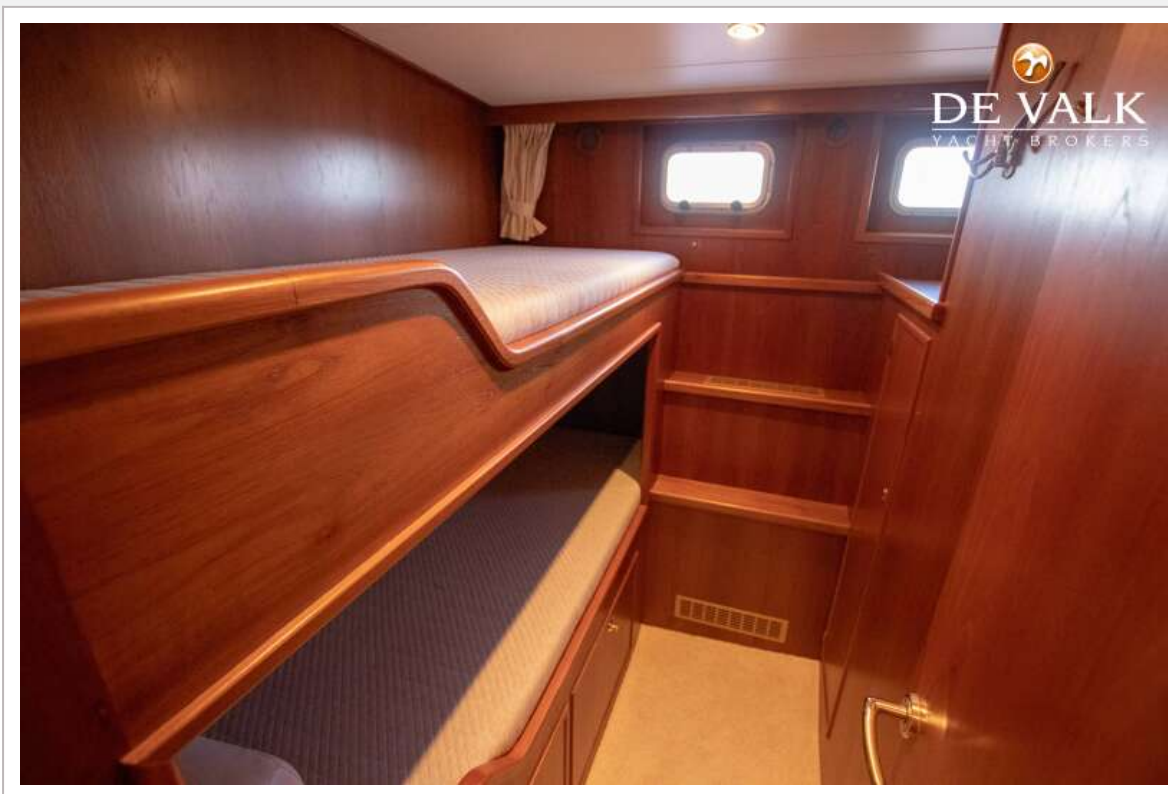




# ALMKOTTER 1330 AK



# ALMKOTTER 1330 AK

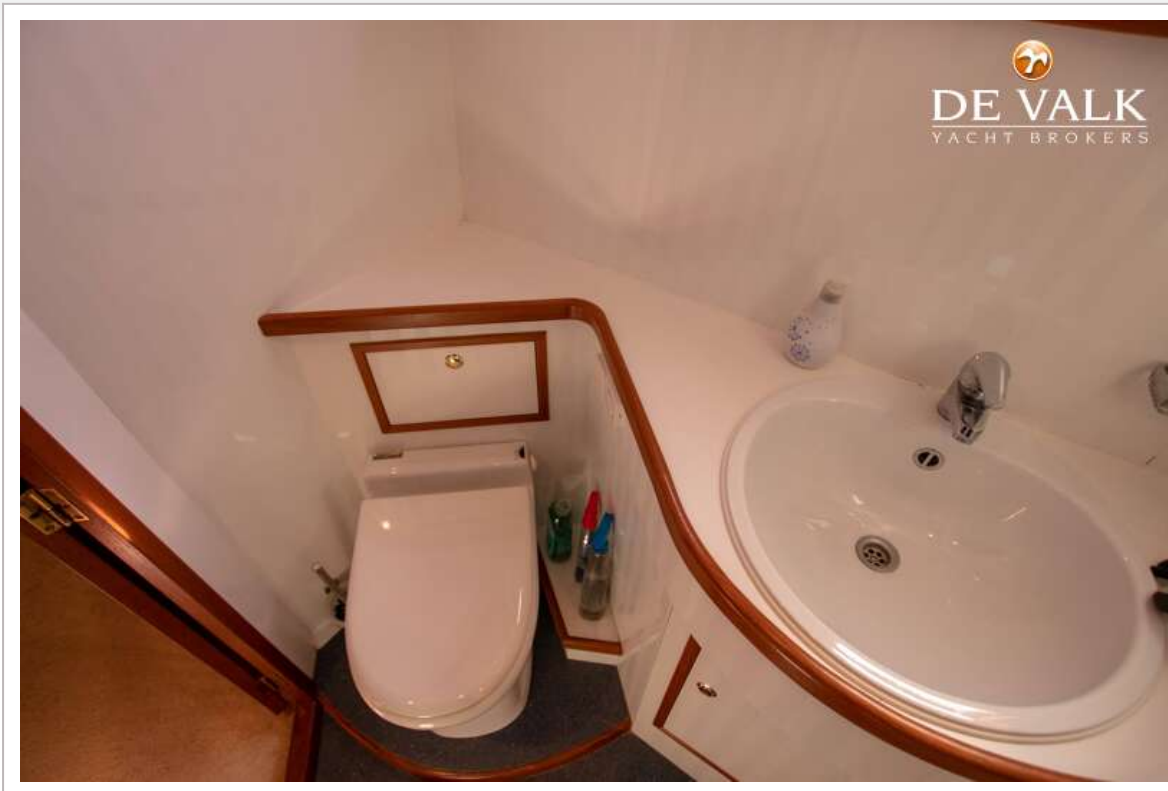


# ALMKOTTER 1330 AK





# ALMKOTTER 1330 AK





# ALMKOTTER 1330 AK

