



DE VALK
YACHT BROKERS



SICHTERMAN 16.30 HT



DE VALK
YACHT BROKERS

SICHTERMAN 16.30 HT

BROKER'S COMMENTS

Meet this beautiful Sichterman 16.30 HT, built in 2019 and launched in 2020. This elegant, yet sturdy fast sailing boat gives you all the comfort you may expect on board by means of air conditioning and heating. The very extensive battery pack makes it virtually self-sufficient. Equipped with two very solid Cummins engines with a capacity of 355 hp, the bow and stern thrusters ensure ideal manoeuvrability. Make an appointment for a viewing on location. This boat is offered in cooperation with Workumer Jachtservice, the proud builder of this beautiful motorboat.

Sjoerd Paddenburg

SPECIFICATIONS

Dimensions	16.30 x 4.67 x 0.90 (m)	Builder	Workumer Jachtservice
Built	2019	Cabins	2
Material	Aluminium	Berths	6
Engine(s)	2 x Cummins QSB6.7355HOI diesel	Hp/Kw	2 x 355.00 (hp), 260.93 (kw)
Asking price	€ 1.125.000 (VAT Paid)	Lying	contact Loosdrecht

CONTACT

Sales office	De Valk Loosdrecht	Telephone	+31 35 582 90 30
Address	't Breukeleveense Meentje 6 1231 LM Loosdrecht / Wijdmeren The Netherlands	E-mail	loosdrecht@devalk.nl

DISCLAIMER

These particulars are given in good faith as supplied but cannot be guaranteed.



SICHTERMAN 16.30 HT

GENERAL

Model	SICHTERMAN 16.30 HT
Type	motor yacht
LOA (m)	16,30
Beam (m)	4,67
Draft (m)	0,90
Air draft (m)	3,70
Air draft min (m)	3,20
Headroom (m)	2,10
Year built	2019
Launched	2020
Builder	Workumer Jachtservice
Country	The Netherlands
Designer	Cor de Rover
Displacement (t)	24
CE norm	A
Hull material	aluminium
Hull colour	blue
Hull shape	yes
Superstructure material	aluminium
Rubbing strake	stainless steel
Deck material	aluminium
Deck finish	teak
Window material	double glazing
Mast can be lowered	electric
Fuel tank (litre)	1500
Fuel tank 2 (litre)	1500
Level indicator (fuel tank)	Control display
Freshwater tank (litre)	879
Level indicator (freshwater)	Control display
Blackwater tank (litre)	205



Level indicator (blackwater)	Control display
Wheel steering	hydraulic
Inside helm position	yes

ACCOMMODATION

Cabins	2
Berths	6
Interior	teak White wash
Floor	yes
Saloon	yes
Headroom saloon (m)	2,10
Sliding roof	electric
Heating	floor heating Kabola
Air-conditioning	reverse cycle airco Webasto
Dinette	yes
Dinette to convert into berth	yes
Opening door to cockpit	yes
Countertop	corian
Sink	stainless steel
Cooker	induction 2 pits - Pelgrim
Microwave/oven combi	Siemens
Fridge	2x
Hot water system	on central heating
Water pressure system	electrical
Dishwasher	Siemens
Coffee maker	Nespresso
Owners cabin	double bed
Bed length (m)	2
Wardrobe	hanging/drawers/shelves
Bathroom	shared
Toilet	separate 2x



Toilet system	electric
Shower	shared
Guest cabin 1	double bed
Bed length (m)	2
Wardrobe	hanging and shelves
Washing machine/dryer combi	Candy 8 kg

MACHINERY

No of engines	2
Make	Cummins
Type	QSB6.7355HOI
HP	355
kW	260.93
Fuel	diesel
Year installed	2019
Engine cooling system	seawater
Drive	shaft
Engine controls	electrical
Gearbox	hydraulic ZF
Bowthruster	electric Sidepower
Sternthruster	electric Sidepower
Propeller type	fixed
Propeller shaft material	stainless steel
Shaft lubrication	water
Manual bilge pump	yes
Electric bilge pump	yes
Electrical installation	12V / 24V / 230V + Empirbus system
Start battery	2 x 2 12V/165 Ah Victron Energy
Service battery	10x 12V/220Ah Victron Energy
Bowthruster battery	2x 2 12V/130Ah Victron Energy
Sternthruster battery	2x 2 12V/130Ah Victron Energy



Battery monitor	Victron Energy
Battery charger/inverter	2x Victron Energy MultiPlus
Shorepower	with cable
Insulation transformer	Victron Energy

NAVIGATION

Multi control display	Raymarine Axiom
Depth sounder/log	I70s
VHF	Raymarine Ray90
Autopilot	P70s
Rudder angle indicator	Raymarine Axiom
Plotter/GPS	Raymarine Axiom
Wifi antenna	yes
Camera	Raymarine
Navigation lights	yes

EQUIPMENT

Cockpit cushions	yes
Cockpit table	yes
Bathing platform	Teak finish
Transom door	Hydraulic
Deck shower	yes
Sea railing	yes
Grab rail (superstructure)	stainless steel
Railing side opening gates	2x (PS & SB)
Wiper	3x 2 arms
Horn	electric
Fenders	yes
Mooring lines	yes
TV	Samsung



SICHTERMAN 16.30 HT



SICHTERMAN 16.30 HT



SICHTERMAN 16.30 HT



SICHTERMAN 16.30 HT



SICHTERMAN 16.30 HT



SICHTERMAN 16.30 HT



SICHTERMAN 16.30 HT



SICHTERMAN 16.30 HT



SICHTERMAN 16.30 HT





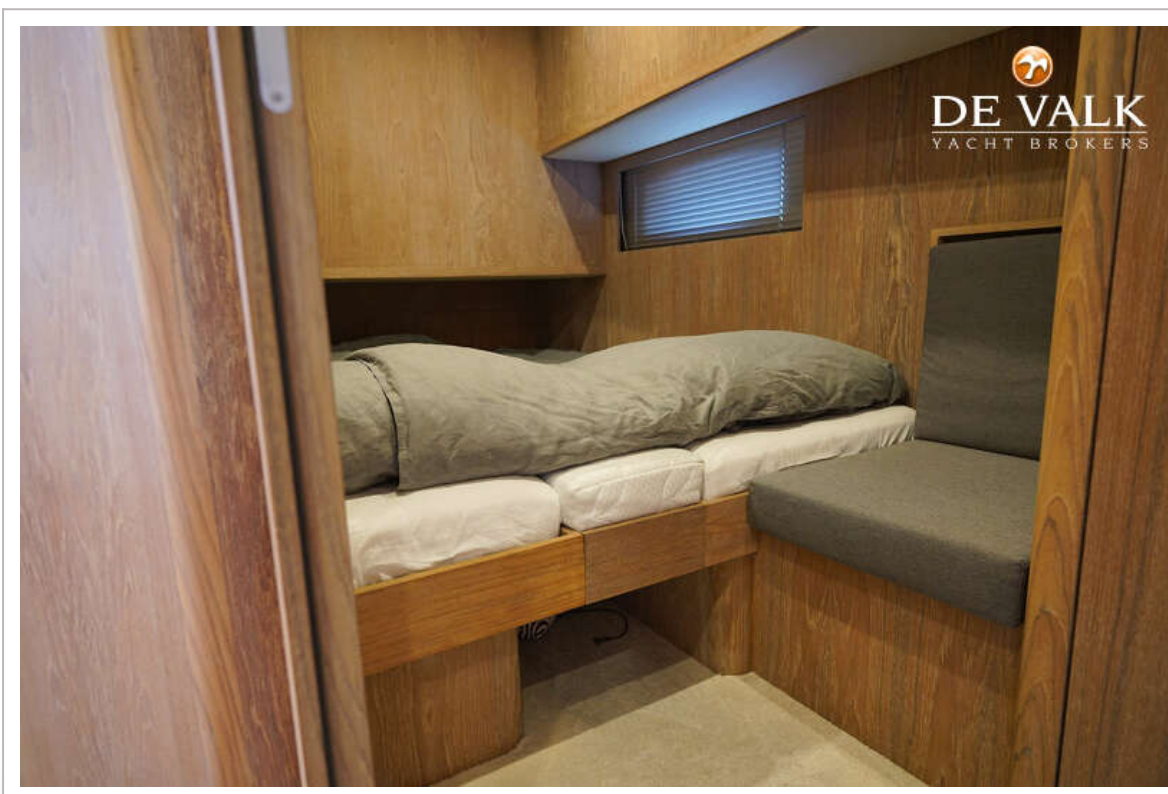
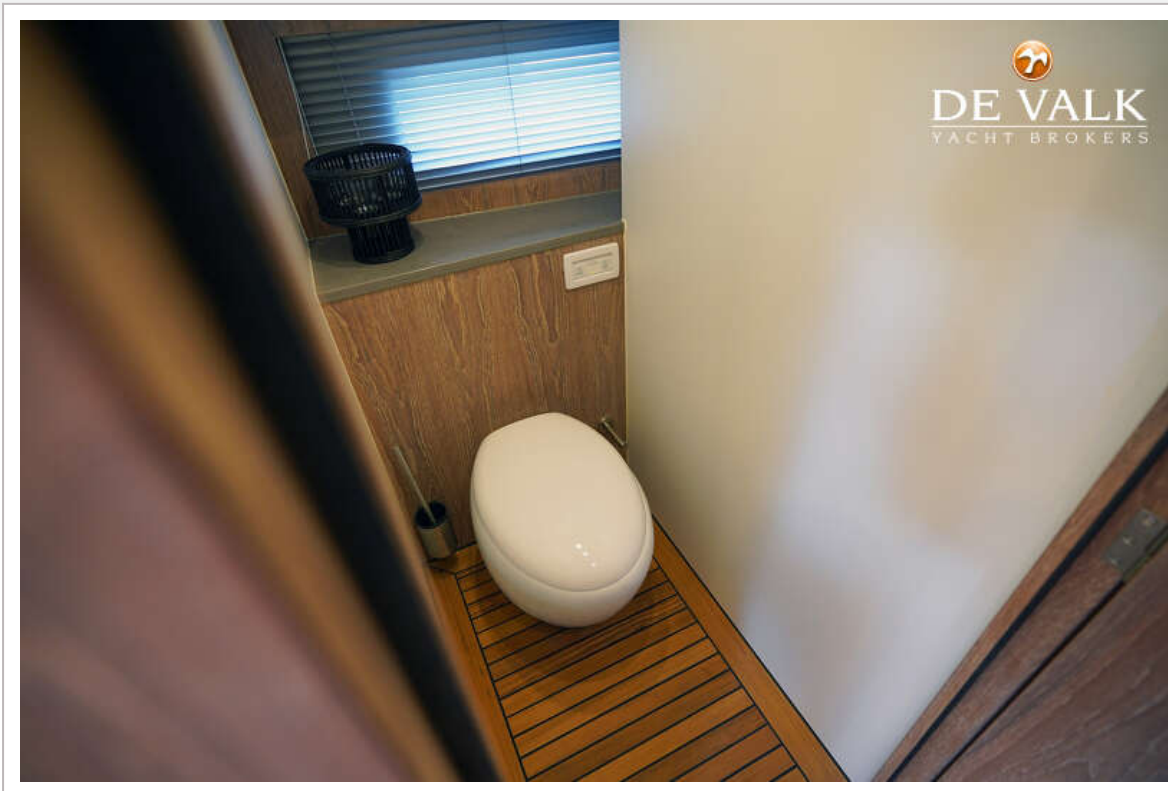
SICHTERMAN 16.30 HT



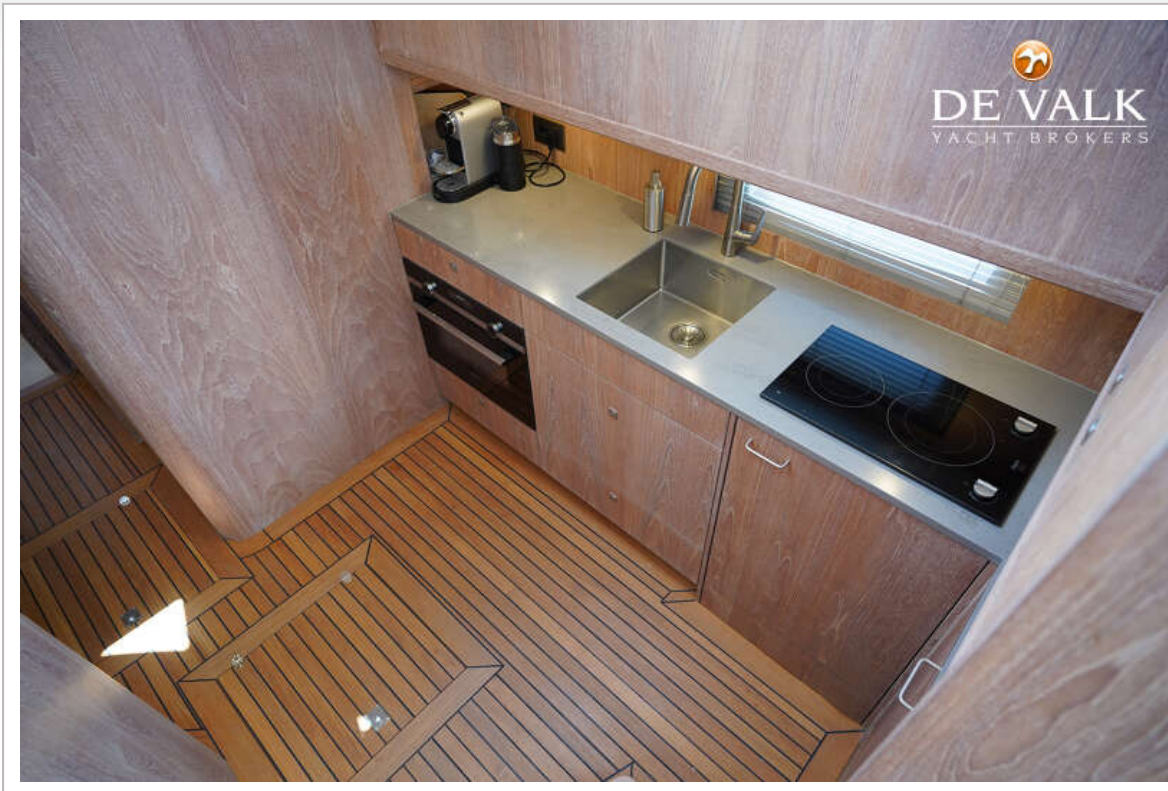
SICHTERMAN 16.30 HT



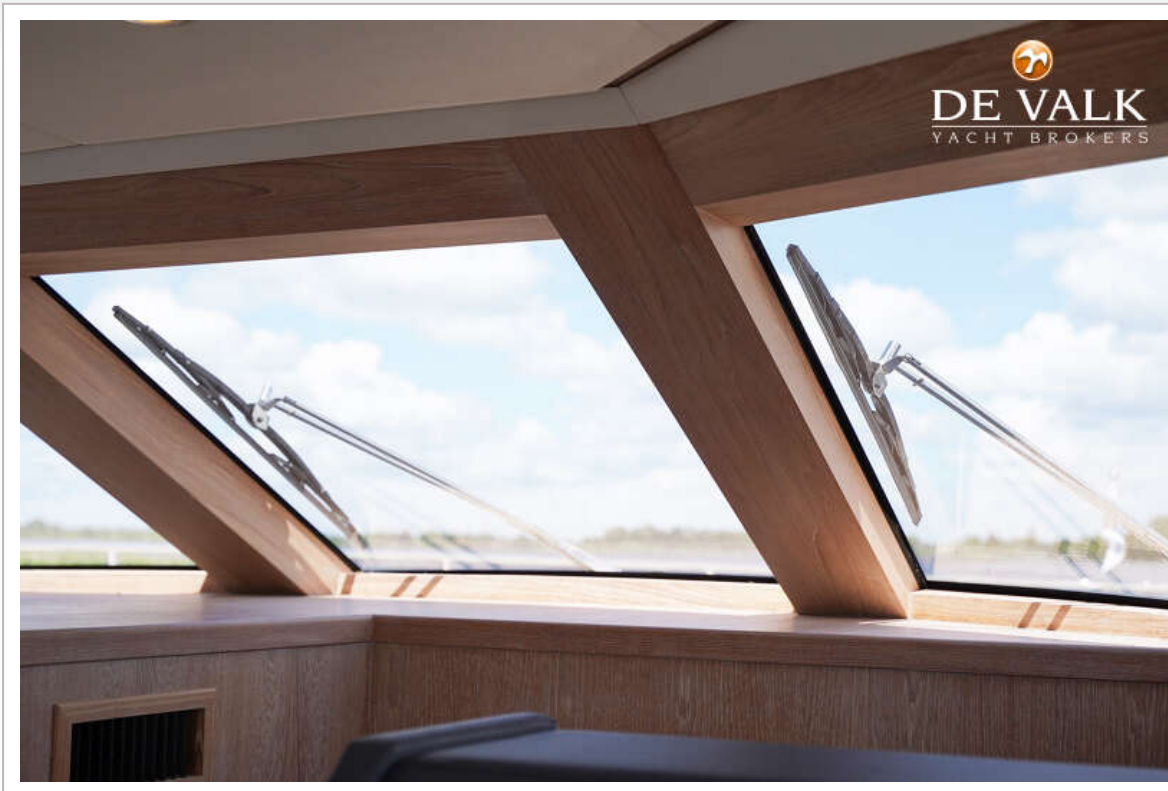




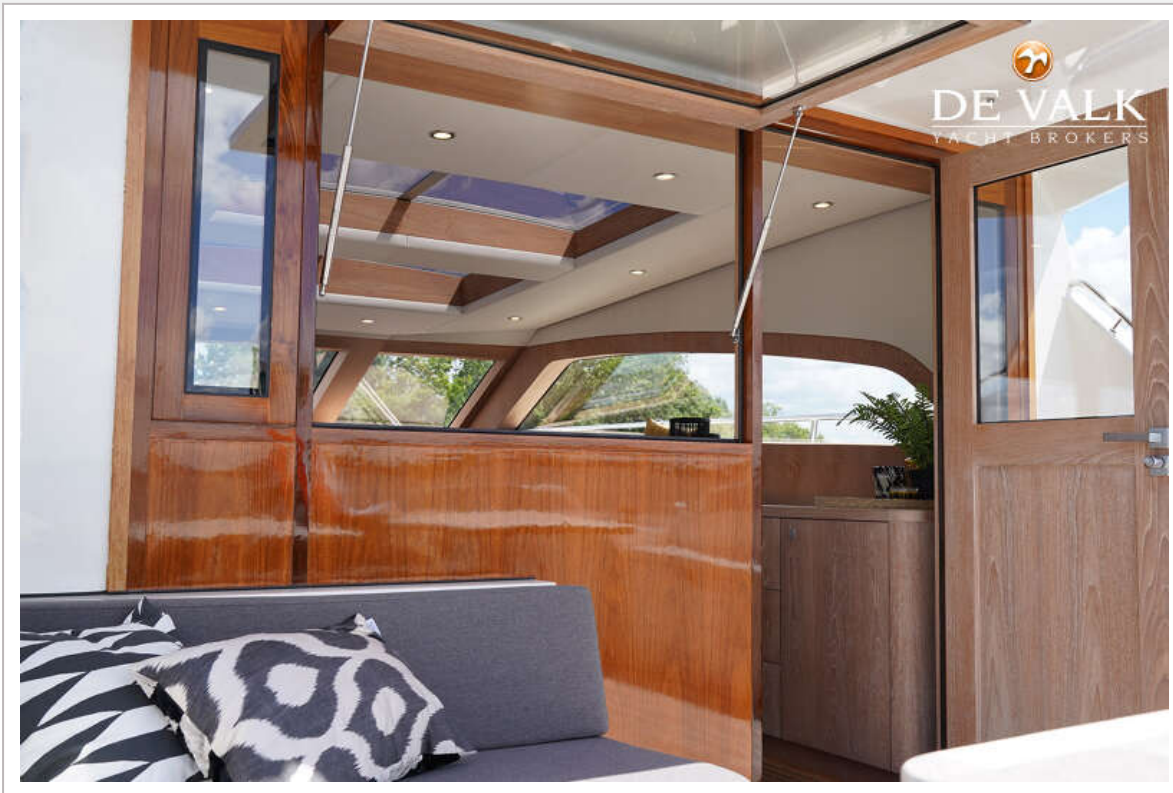
SICHTERMAN 16.30 HT



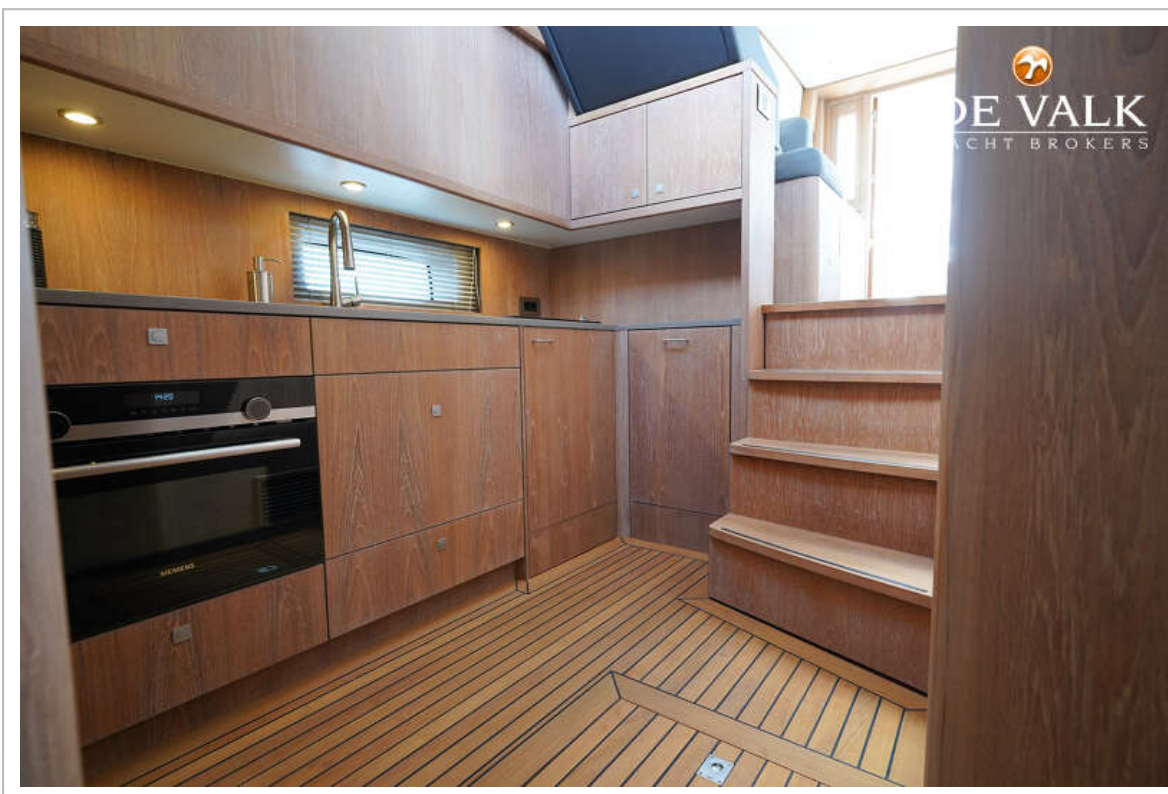
SICHTERMAN 16.30 HT



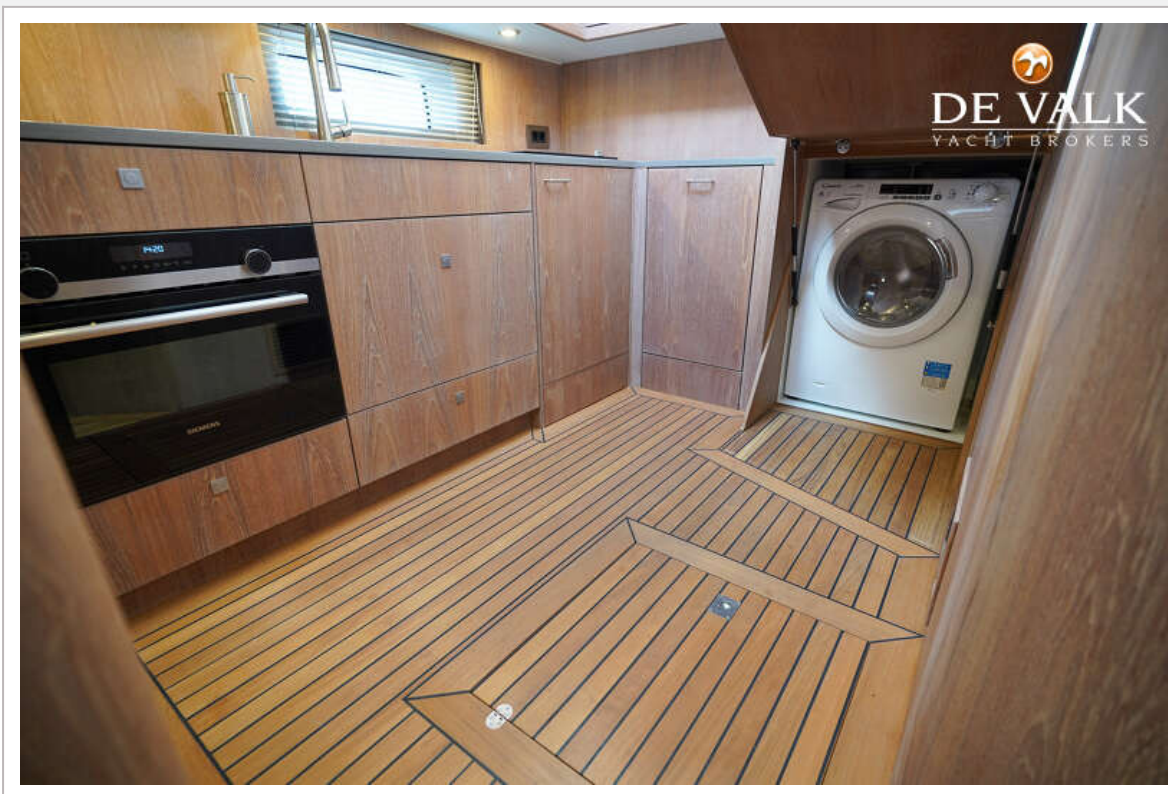
SICHTERMAN 16.30 HT



SICHTERMAN 16.30 HT



SICHTERMAN 16.30 HT




DE VALK
YACHT BROKERS

