



DE VALK  
YACHT BROKERS



VAN DE STADT SAMOA 47



DE VALK  
YACHT BROKERS

## BROKER'S COMMENTS

The very successful design from Van de Stadt, the Samoa 47/48 model was introduced in the early nineties. A fast and very seaworthy passage maker with excellent handling, performance, safety and reliability. Features that are still sought after today for those who want to do some serious long distance cruising. This Van de Stadt 47 Samoa was built by the owner from 1995 until 2006 when she was launched. With her three cabin layout she is very much suited for family cruising.

*Reinoud Bicker Caarten*

## SPECIFICATIONS

<b>Dimensions</b>	14.54 x 4.56 x 2.40 (m)	<b>Builder</b>	self made
<b>Built</b>	2006	<b>Cabins</b>	3
<b>Material</b>	Aluminium	<b>Berths</b>	6
<b>Engine(s)</b>	1 x Volvo Penta TMD 22P diesel	<b>Hp/Kw</b>	78.00 (hp), 57.33 (kw)
<b>Asking price</b>	sold (VAT )	<b>Lying</b>	at sales office

## CONTACT

<b>Sales office</b>	De Valk Portugal	<b>Telephone</b>	+351 308 812321
<b>Address</b>	Edifício Administrativo - Ponta da Areia 8500 - 345 Portimão Portugal	<b>E-mail</b>	portugal@devalk.nl

## DISCLAIMER

These particulars are given in good faith as supplied but cannot be guaranteed.



## GENERAL

<b>Model</b>	VAN DE STADT SAMOA 47
<b>Type</b>	sailing yacht
<b>LOA (m)</b>	14,54
<b>Beam (m)</b>	4,56
<b>Draft (m)</b>	2,40
<b>Air draft (m)</b>	23,30
<b>Headroom (m)</b>	1,95
<b>Year built</b>	2006
<b>Launched</b>	2006
<b>Builder</b>	Self made
<b>Country</b>	Sweden
<b>Designer</b>	Van de Stadt
<b>Displacement (t)</b>	14,5
<b>Ballast (tonnes)</b>	lead in aluminum 6.1
<b>Gross tonnage</b>	18
<b>CE norm</b>	A
<b>Hull material</b>	aluminium
<b>Hull colour</b>	off-white
<b>Hull thickness (mm)</b>	6mm
<b>Keel type</b>	fin keel
<b>Superstructure material</b>	aluminium
<b>Deck plate thickness (mm)</b>	5mm
<b>Deck material</b>	aluminium
<b>Deck finish</b>	Treadmaster
<b>Superstructure deck finish</b>	non-skid paint
<b>Cockpit deck finish</b>	cork
<b>Antifouling (year)</b>	2021
<b>Dorades</b>	Vetus 5
<b>Window frame</b>	aluminium
<b>Window material</b>	tempered glass



Deckhatch	7
Portholes	stainless steel 6
Insulation	Foamed PE
Fuel tank (litre)	aluminium 2x300L
Level indicator (fuel tank)	yes
Fuel daytank (litre)	aluminium 20L automatic fill with manual backup
Freshwater tank (litre)	aluminium 2x500L
Level indicator (freshwater)	yes
Blackwater tank (litre)	aluminium 100L
Blackwater tank extraction	deck extraction + pump
Greywater tank (litre)	aluminium 100L
Wheel steering	cable steering Whitlock/PMCWO-300
Emergency tiller	yes

## ACCOMMODATION

Cabins	3
Berths	6
Interior	Elmtree
Floor	teak
Doghhouse	Fixed aluminium hardtop with tempered glass
Saloon	yes
Headroom saloon (m)	1.95
Heating	Eberspacher D5W with 4 heat exchangers for water
Chart table	yes
Aft Cabin	2x
Dinette	U shaped in saloon
Galley	yes
Countertop	corian
Sink	stainless steel
Cooker	calor gas Force 10 3 burners
Oven	Force 10



Gas alarm	yes
Fridge	108L + 10L Waeco Coolmatic CR
Freezer	100L Waeco Coolmatic CU 94
Hot water system	220V + engine
Water pressure system	electrical
Hot water tap	yes
Crockery	yes
Owners cabin	double bed
Wardrobe	hanging/drawers/shelves
Bathroom	en suite
Toilet	en suite
Toilet system	electric Vetus WCL 24v
Wash basin	in the bathroom
Shower	en suite
Guest cabin 1	bunk bed
Wardrobe	hanging and shelves
Bathroom	shared
Toilet	shared
Wash basin	at the toilet
Shower	shared
Guest cabin 2	bunk bed
Wardrobe	hanging and shelves
Bathroom	shared
Toilet	shared
Wash basin	at the toilet
Shower	shared

## MACHINERY

No of engines	1
Make	Volvo Penta
Type	TMD 22P



<b>HP</b>	78
<b>kW</b>	57,33
<b>Fuel</b>	diesel
<b>Year installed</b>	2005
<b>Maximum speed (kn)</b>	9
<b>Cruising speed (kn)</b>	8
<b>Consumption (l/hr)</b>	8
<b>Engine hours</b>	1400
<b>Engine cooling system</b>	freshwater heat exchanger
<b>Drive</b>	shaft
<b>Engine controls</b>	bowden cable
<b>Gearbox</b>	Volvo Penta MS25L-A
<b>Engine controls</b>	bowden cable
<b>Exhaust</b>	watercooled
<b>Propeller type</b>	Flex-o-fold 20x13-3R
<b>Propeller blades</b>	Bronze
<b>Propeller shaft material</b>	stainless steel
<b>Shaft lubrication</b>	water
<b>Manual bilge pump</b>	2x
<b>Electric bilge pump</b>	1x
<b>Electrical installation</b>	12/24/220v 40A & 60A alternators
<b>Generator</b>	Fischer Panda 4500ND
<b>Batteries</b>	All from 2018
<b>Start battery</b>	Optima RT R4,2 12V 50Ah
<b>Service battery</b>	VARTA AGM LAD85 24V, 255Ah +85Ah
<b>Battery charger/inverter</b>	Atlas 24/600
<b>Shorepower</b>	Odelco IT 3,6-MT transformer
<b>Insulation transformer</b>	Odelco IT (115/230V)
<b>Extra info</b>	Portable reference electrode - Galavnic, Silvion Ag/AgCl

## NAVIGATION



<b>Compass</b>	Silva 125T
<b>Electric compass</b>	Furuno C-500 (auto pilot) + B&G ACP remote compass
<b>Forw. looking depth sounder</b>	Echopilot FLS 2D
<b>Log</b>	Garmin GPSMAP 4008
<b>Windset</b>	Garmin wind wired, Silva NX2, Garmin GND10
<b>Repeater</b>	Silva NX2
<b>VHF</b>	ICOM IC-M421 with cockpit speaker, ICom M1 Euro V
<b>Autopilot</b>	B&G ACP2
<b>Rudder angle indicator</b>	Via Autopilot display
<b>Radar</b>	Furuno 1943C
<b>GPS</b>	Garmin GPS60 + GPS 17HVS
<b>Plotter/GPS</b>	NMEA 2000 display Maretron DSM410
<b>AIS transceiver</b>	Vespermarine XB-8000
<b>EPIRB</b>	Mcmurdo Smartfind S20
<b>Navigation lights</b>	yes

## EQUIPMENT

<b>Fixed windscreen</b>	yes
<b>Fixed hardtop</b>	yes
<b>Cockpit cover</b>	yes
<b>Bimini</b>	yes
<b>Bathing platform</b>	yes
<b>Boarding ladder</b>	stainless steel
<b>Gangway</b>	GS composite carbon 2,2m 6,2kg
<b>Deck shower</b>	Waterhose in chainlocker
<b>Anchor</b>	40kg Delta
<b>Anchor chain</b>	10mm galvanized steel 70m
<b>Anchor 2</b>	14kg Fortress FX 55
<b>Anchor chain</b>	30m chain 10mm +30m line 16mm
<b>Windlass</b>	Lewmar V3
<b>Dinghy</b>	Avon rover 260



Outboard	Tohatsu M4C 3F9
Outboard support	yes
Sea railing	wire
Grab rail (superstructure)	teak
Railing side opening gates	yes
Pushpit	yes
Pulpit	yes
Life raft	container Seago
Life raft (pers)	4
Last life raft survey	Expired
Lifejackets	Automatic + standard
Lifebuoy	1x
Safety lines on deck	2x
Radar reflector	yes
Fenders	yes
Mooring lines	yes
Spare parts	yes
Tools	yes
TV	yes
Radio-cd player	yes
Speakers in salon	yes
Fire extinguisher	yes

## RIGGING

Rigging	fractional 7/8
Standing rigging	wire
Brand mast	Seldén
Material mast	aluminium coated
Spreaders	2xswept
Keel stepped mast	yes
Mainsail	66m2 Hydra Net radial 433, serviced 2018 UK sailmakers



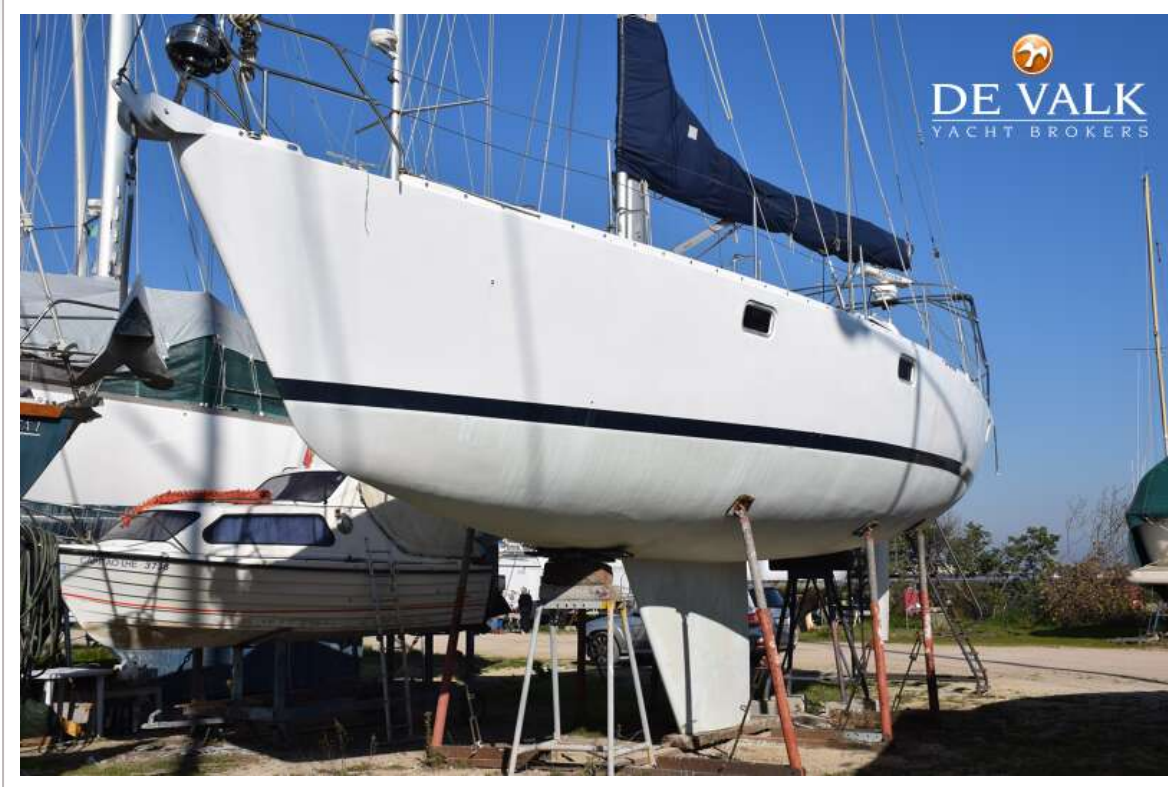


<b>Mainsail cover</b>	yes
<b>Battcars</b>	Frederiksen
<b>Fully battened mainsail</b>	6 full battens
<b>Genoa</b>	56m2 Hydra-Net Radiaal 433
<b>Genoa furler</b>	Selden Furlex 412S
<b>Genoa cover</b>	yes
<b>Stormjib</b>	17m2
<b>Reefing System</b>	quick-one-line-reefing 3 reefs
<b>Boomvang</b>	Selden
<b>Primary sheet winch</b>	manual 2x Lewmar 50 AST
<b>Secondary sheet winch</b>	electric 2xLewmar 48 AEST
<b>Halyard winches</b>	mounted on mast 1x Lewmar 44 AST
<b>Reefing winch</b>	Electric in doghouse
<b>Multifunctional winches</b>	2x Lewmar 50 AEST electric in doghouse
<b>Spi-pole</b>	6m





# VAN DE STADT SAMOA 47

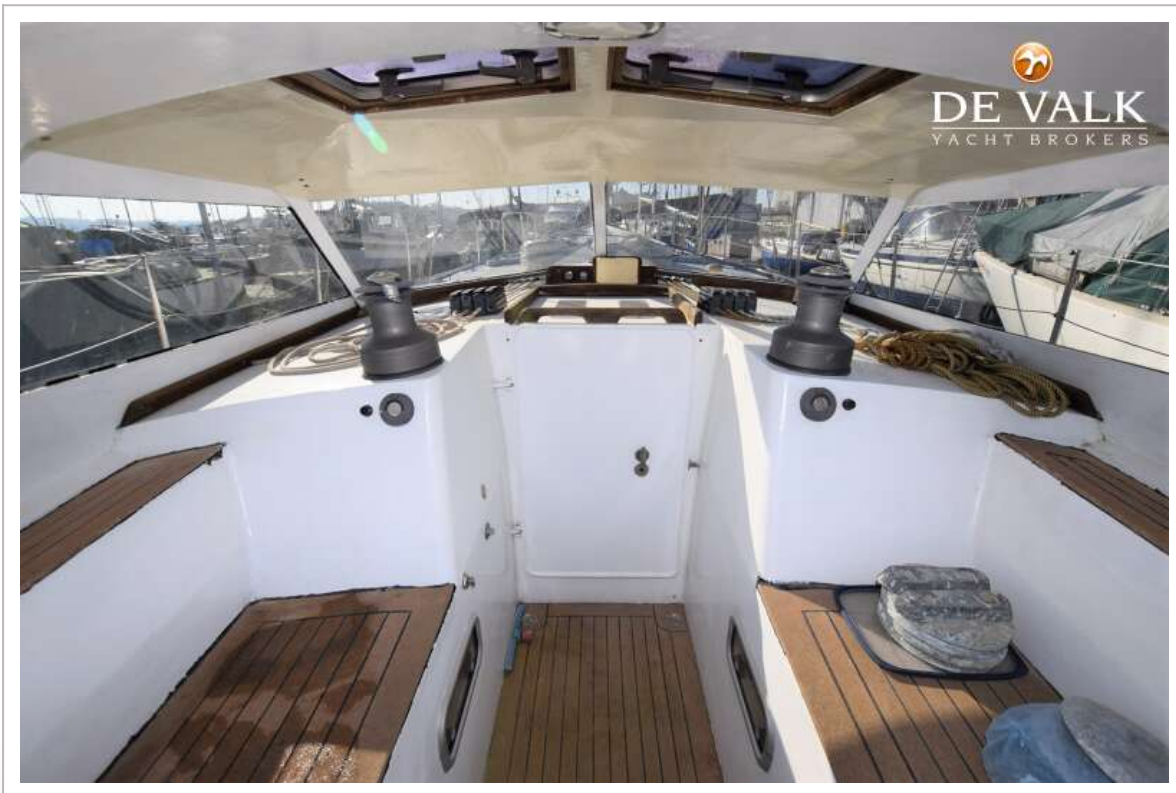




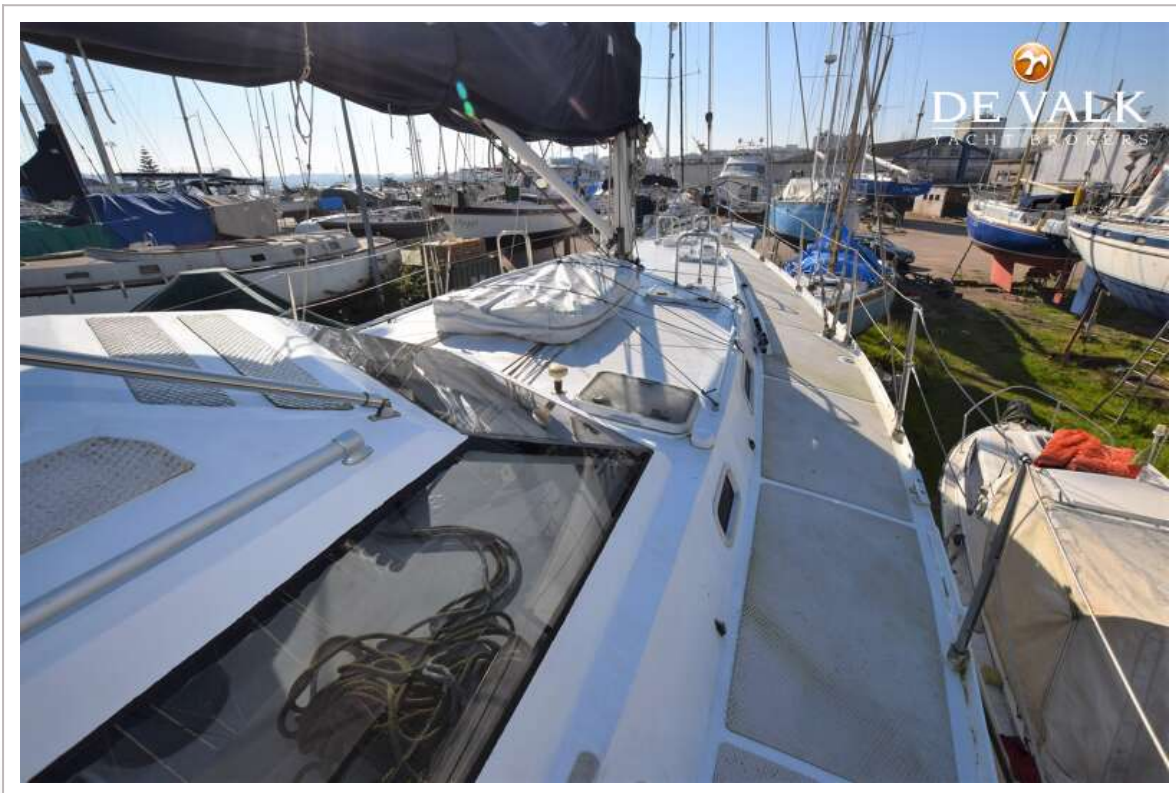
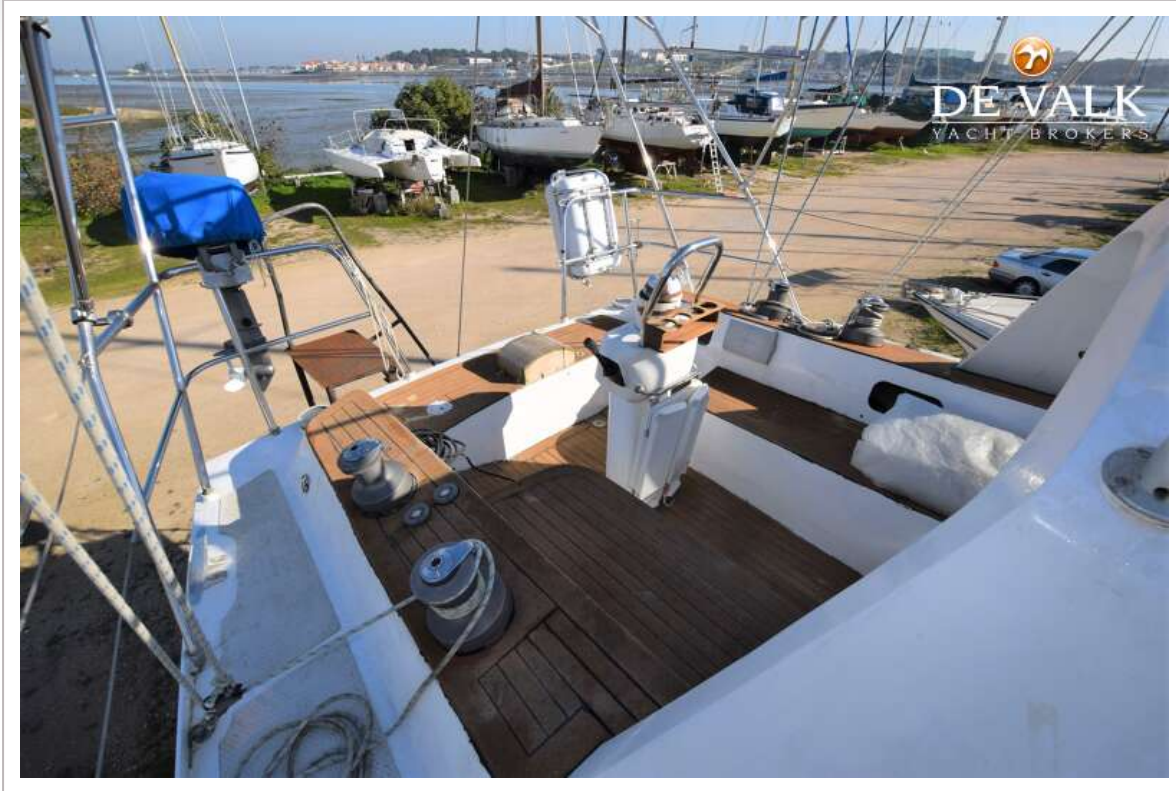
# VAN DE STADT SAMOA 47



# VAN DE STADT SAMOA 47



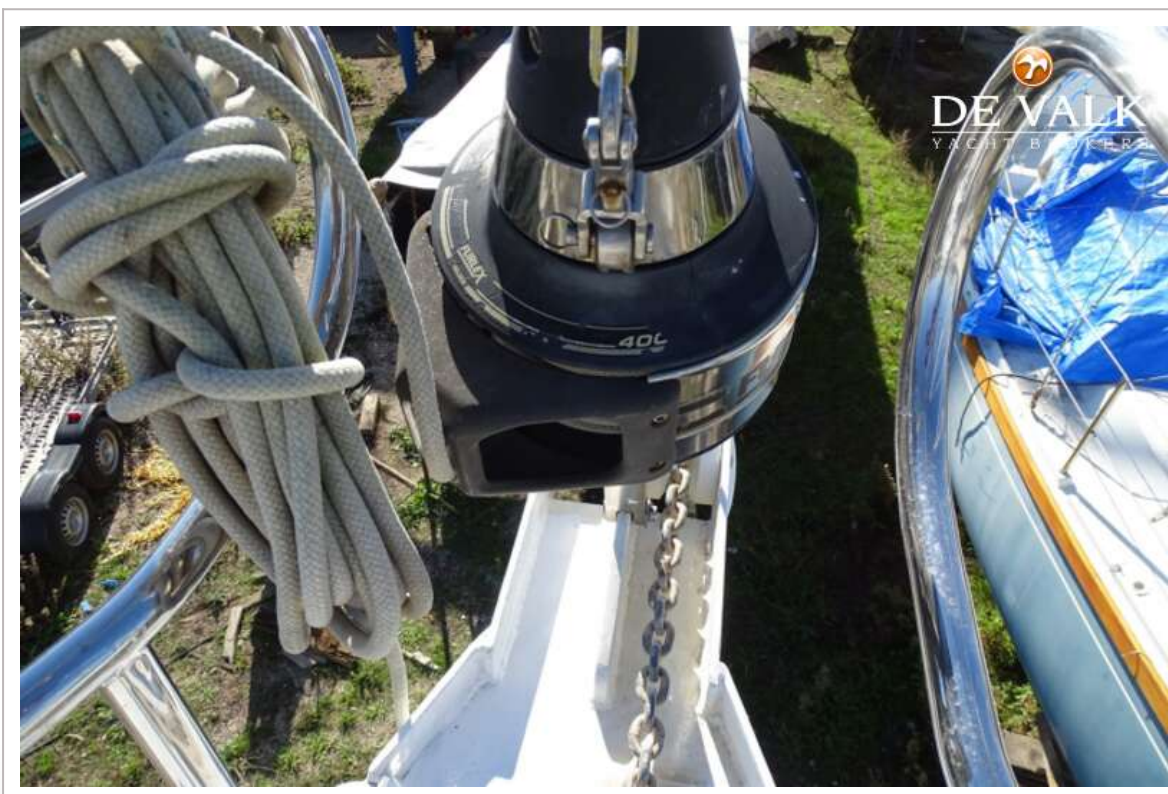
# VAN DE STADT SAMOA 47



# VAN DE STADT SAMOA 47



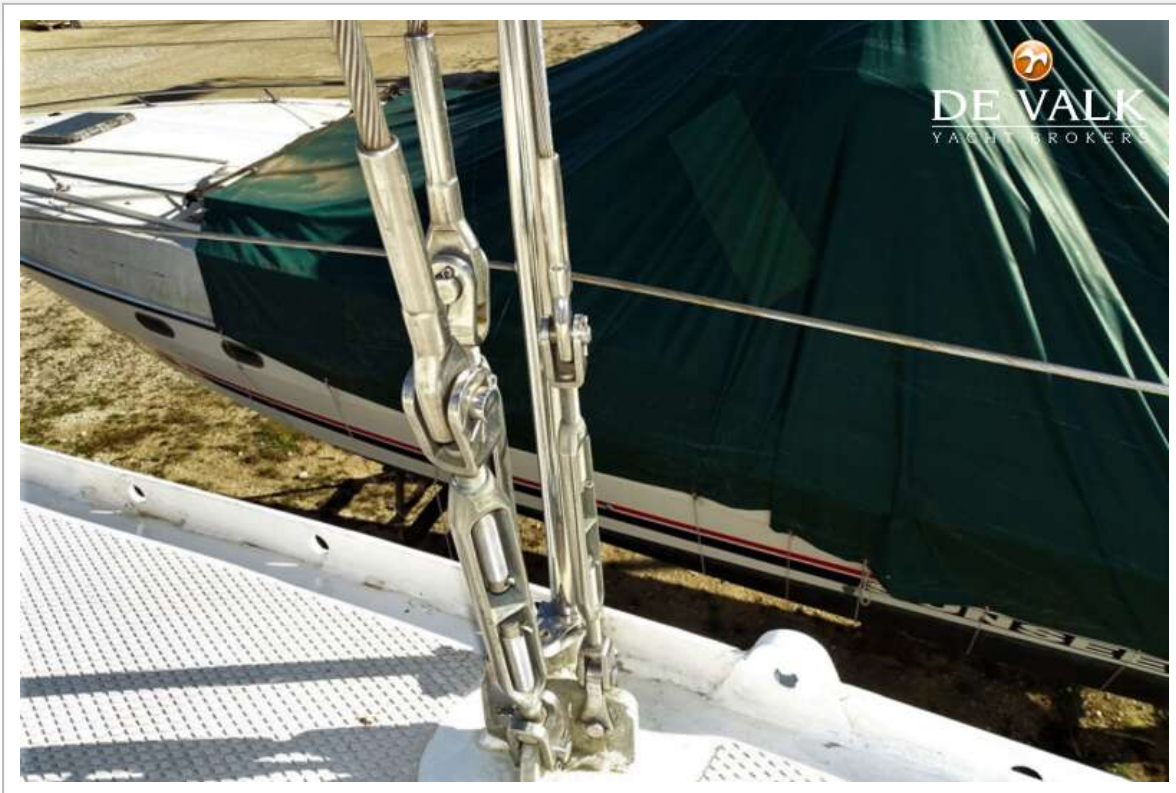




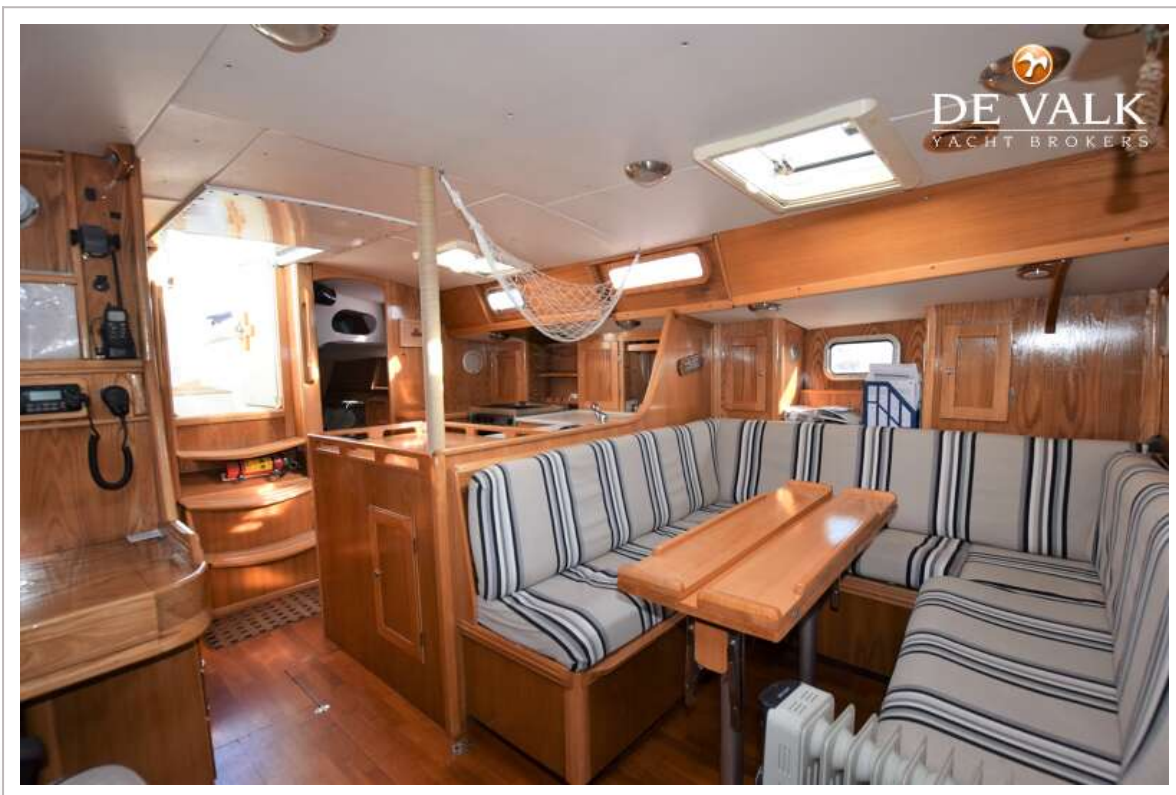
# VAN DE STADT SAMOA 47



# VAN DE STADT SAMOA 47



# VAN DE STADT SAMOA 47



# VAN DE STADT SAMOA 47

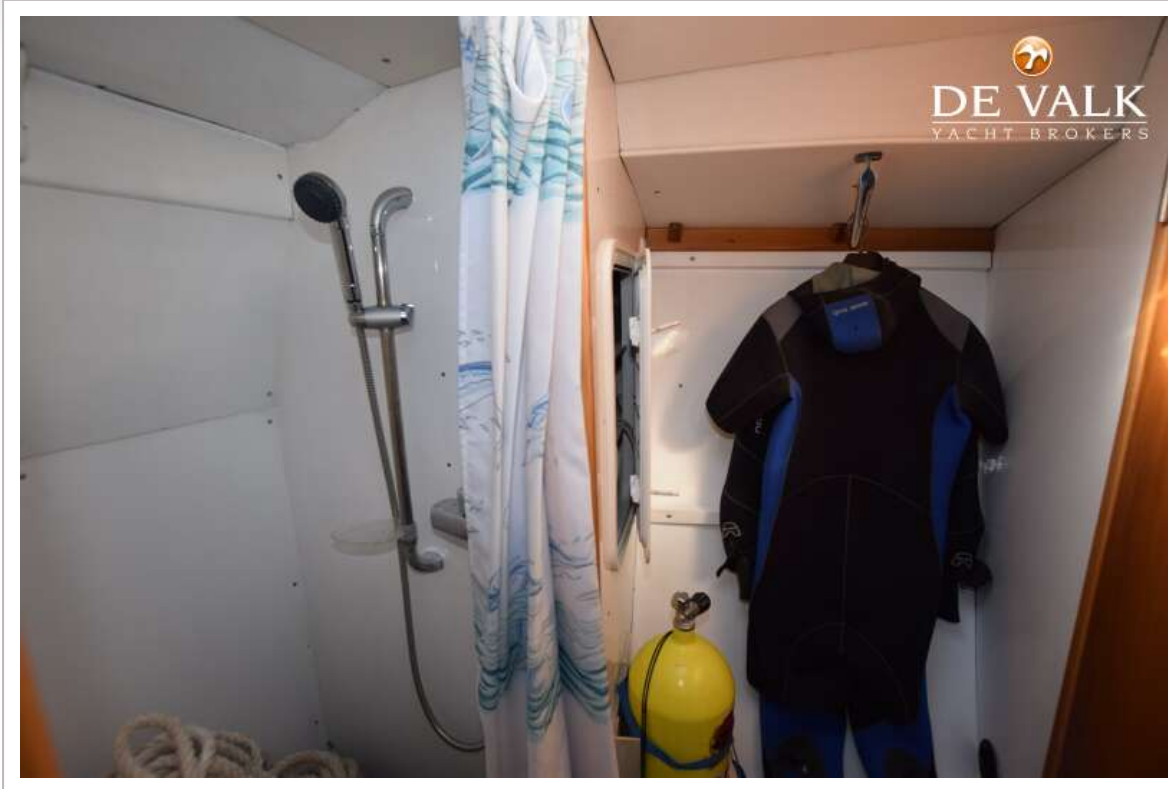


# VAN DE STADT SAMOA 47



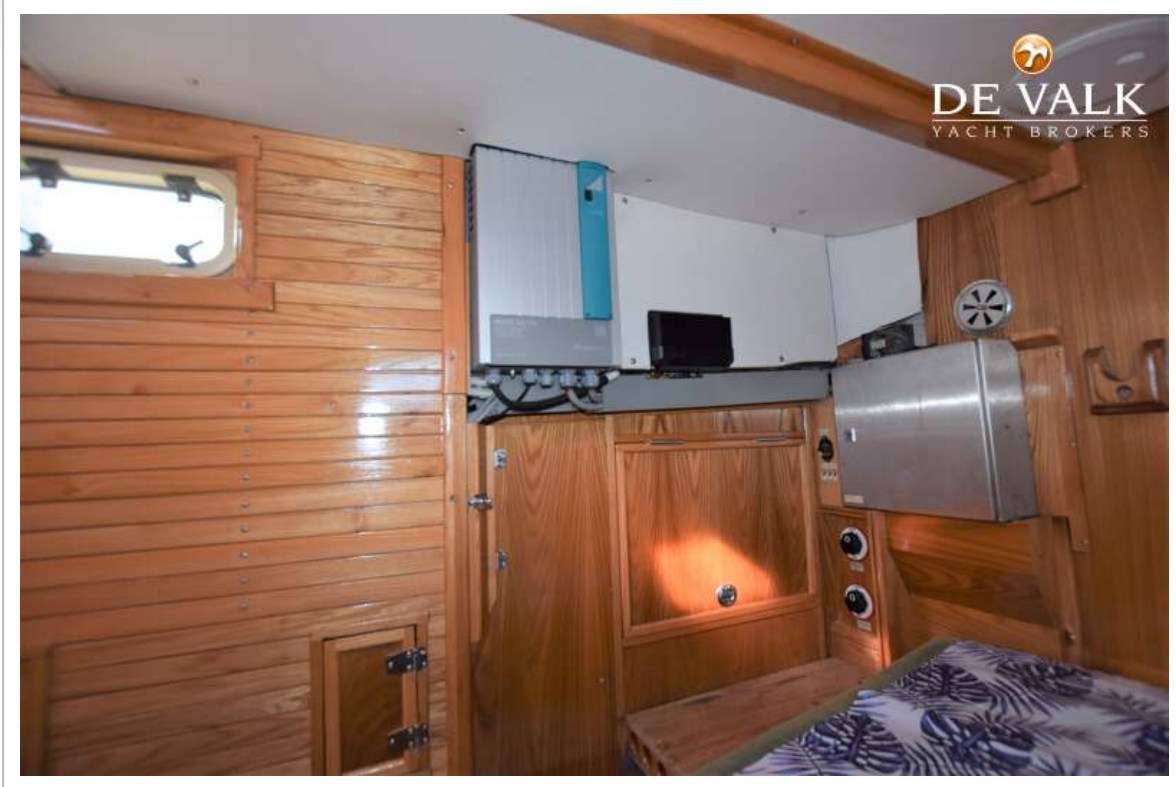
# VAN DE STADT SAMOA 47







# VAN DE STADT SAMOA 47



# VAN DE STADT SAMOA 47



