



DE VALK
YACHT BROKERS



SANLORENZO SX 88



DE VALK
YACHT BROKERS

BROKER'S COMMENTS

The 26.7m motor yacht SX88 designed by the famous Italian shipyard Sanlorenzo offers accommodation for up to 8 guests in 4 cabins and features interior styling by Marty Lowe. Built in 2018, this SX88 ensure guests can explore the ocean's wonders in style and comfort. The Sanlorenzo SX88 is built with a GRP hull and GRP superstructure. Powered by 3 x Volvo Penta IPS 1050 engines, she comfortably cruises at 20 knots, reaches a maximum speed of 23 knots with a range of up to 1,000 nautical miles.

Alan Deasti

SPECIFICATIONS

Dimensions	26.70 x 7.21 x 0 (m)	Builder	San Lorenzo
Built	2021	Cabins	4
Material	GRP	Berths	8
Engine(s)	3 x Volvo Penta IPS3 1050 DI 3B diesel	Hp/Kw	3 x 800 (hp), 588 (kw)
Asking price	€ 5.700.000 (VAT Not paid)	Lying	at sales office

CONTACT

Sales office	De Valk Antibes	Telephone	+33 492 91 0202
Address	2, Avenue de Verdun 06600 Antibes France	E-mail	antibes@devalk.nl

DISCLAIMER

These particulars are given in good faith as supplied but cannot be guaranteed.



GENERAL

Model	SANLORENZO SX 88
Type	motor yacht
LOA (m)	26,70
Beam (m)	7,21
Year built	2021
Builder	San Lorenzo
Designer	San Lorenzo
Displacement (t)	72
Hull material	GRP
Hull colour	white
Deck material	teak
Deck finish	teak
Cockpit deck finish	teak
Portholes	yes
Flybridge	Teak bar cabinet with fridge and sink and teppan yaki
Flybridge cover	yes
Flybridge suncover	yes
Fuel tank (litre)	9300L
Level indicator (fuel tank)	yes
Freshwater tank (litre)	2000L
Level indicator (freshwater)	yes
Blackwater tank (litre)	yes
Inside helm position	yes
Flybridge helm position	yes

ACCOMMODATION

Cabins	4
Berths	8
Crew cabin	yes
Crew berths	4



SANLORENZO SX 88

Open cockpit	yes
Deck saloon	yes
Pilot house/deck saloon	yes
Saloon	yes
Sliding roof	electric
Air-conditioning	reverse cycle airco
Navigation center	yes
Chart table	yes
Dining room	yes
Sink	yes
Cooker	ceramic
Oven	yes
Microwave	yes
Fridge	yes
Hot water system	yes
Dishwasher	yes
Ice maker	yes
Coffee maker	yes
Owners cabin	double bed
Wardrobe	walk-in closet
Bathroom	en suite
Toilet	en suite
Wash basin	in the bathroom
Shower	en suite
Extra info	TV (50')
Guest cabin 1	double bed
Wardrobe	hanging and drawers
Bathroom	en suite
Toilet	en suite
Toilet system	yes
Wash basin	in the bathroom
Shower	en suite



Extra info	TV
Guest cabin 2	single bed
Wardrobe	drawers and shelves
Bathroom	en suite
Toilet	en suite
Wash basin	in the bathroom
Shower	en suite
Extra info	yes
Guest cabin 3	single bed
Wardrobe	drawers and shelves
Bathroom	en suite
Toilet	en suite
Wash basin	in the bathroom
Shower	en suite
Washing machine	yes

MACHINERY

No of engines	3
Make	Volvo Penta
Type	IPS3 1050 DI 3B
HP	800
kW	588
Fuel	diesel
Maximum speed (kn)	21
Cruising speed (kn)	17
Bowthruster	yes
Sternthruster	yes
Manual bilge pump	yes
Electric bilge pump	yes
Generator	35kW / 186h
Generator 2	28kW / 202h



Watermaker	yes
Stabilizers	fin

NAVIGATION

Compass	yes
Compass on flybridge	yes
Electric compass	yes
Multi control display	Raymarine
Depth sounder	Raymarine
Depth sounder/log	yes
VHF	yes
Autopilot	Raymarine
Radar	yes
GPS	yes
Plotter	yes
Personal computer	yes
Electronic chart(s)	yes
Navigation lights	yes

EQUIPMENT

Bimini	yes
Cockpit cushions	yes
Cockpit table	yes
Cockpit chairs	yes
Bathing platform	yes
Boarding ladder	aluminum
Bow ladder	yes
Deck shower	yes
Anchor	yes
Anchor chain	yes
Dinghy	Tender-jet Williams / Jet ski Kawasaki



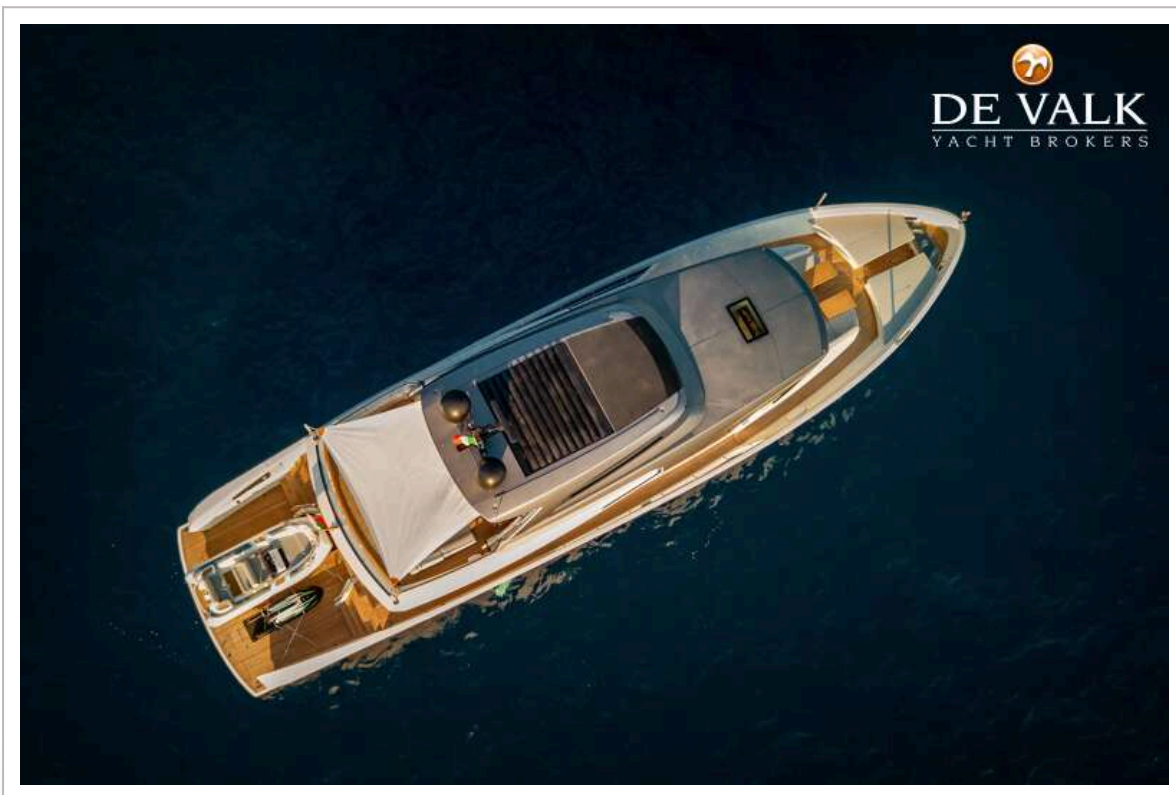
Lifejackets	yes
Wiper	yes
Satellite	yes
Cockpit speakers	yes
Speakers in cabin	yes



SANLORENZO SX 88



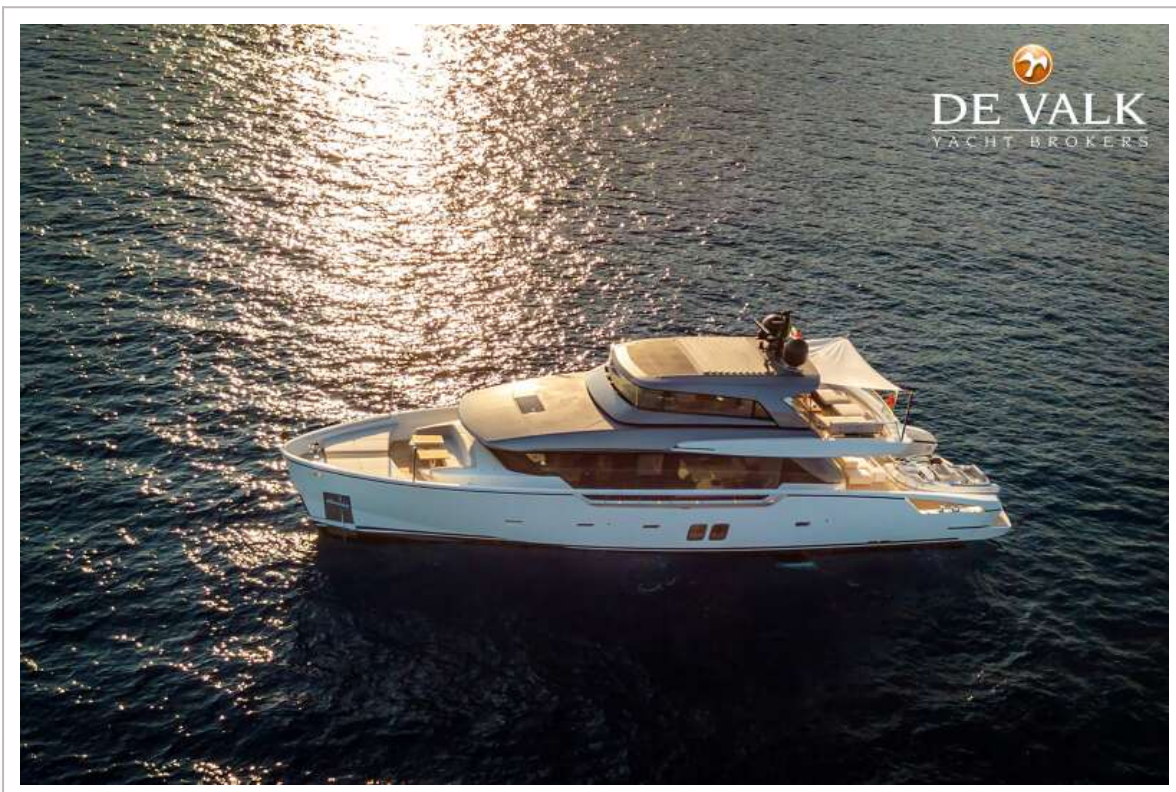
SANLORENZO SX 88



SANLORENZO SX 88



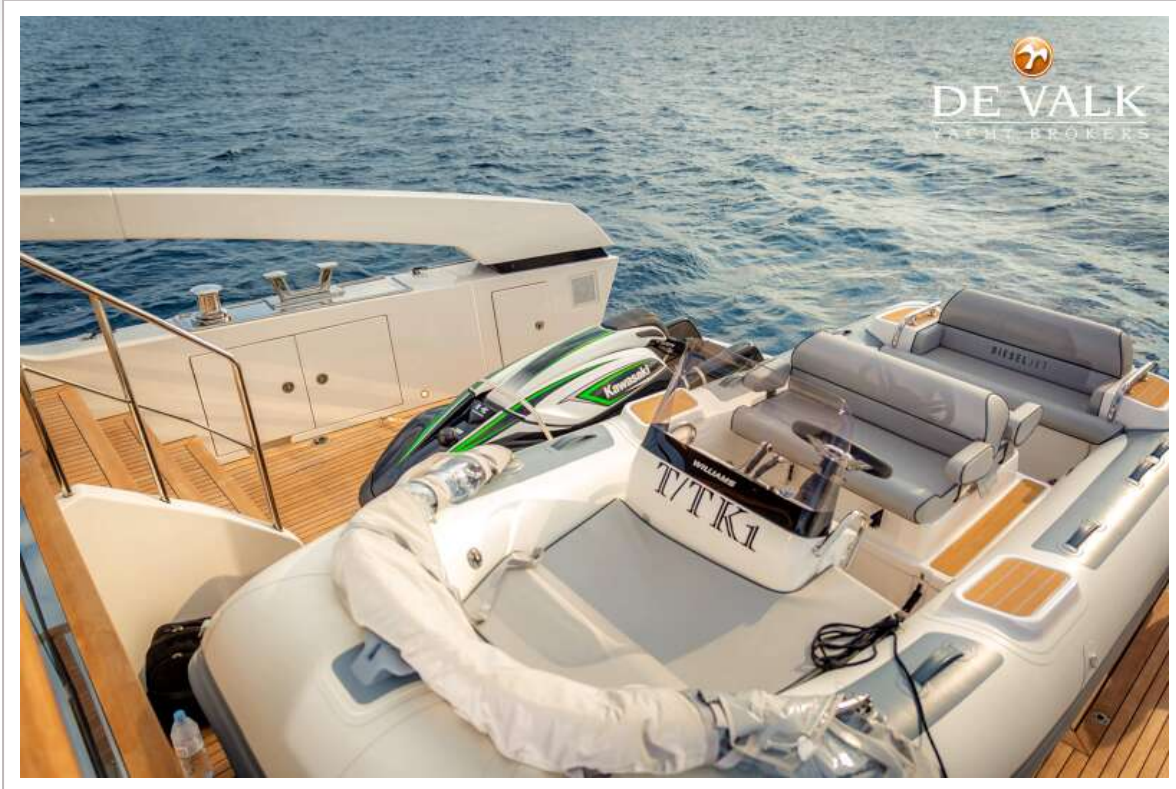
SANLORENZO SX 88



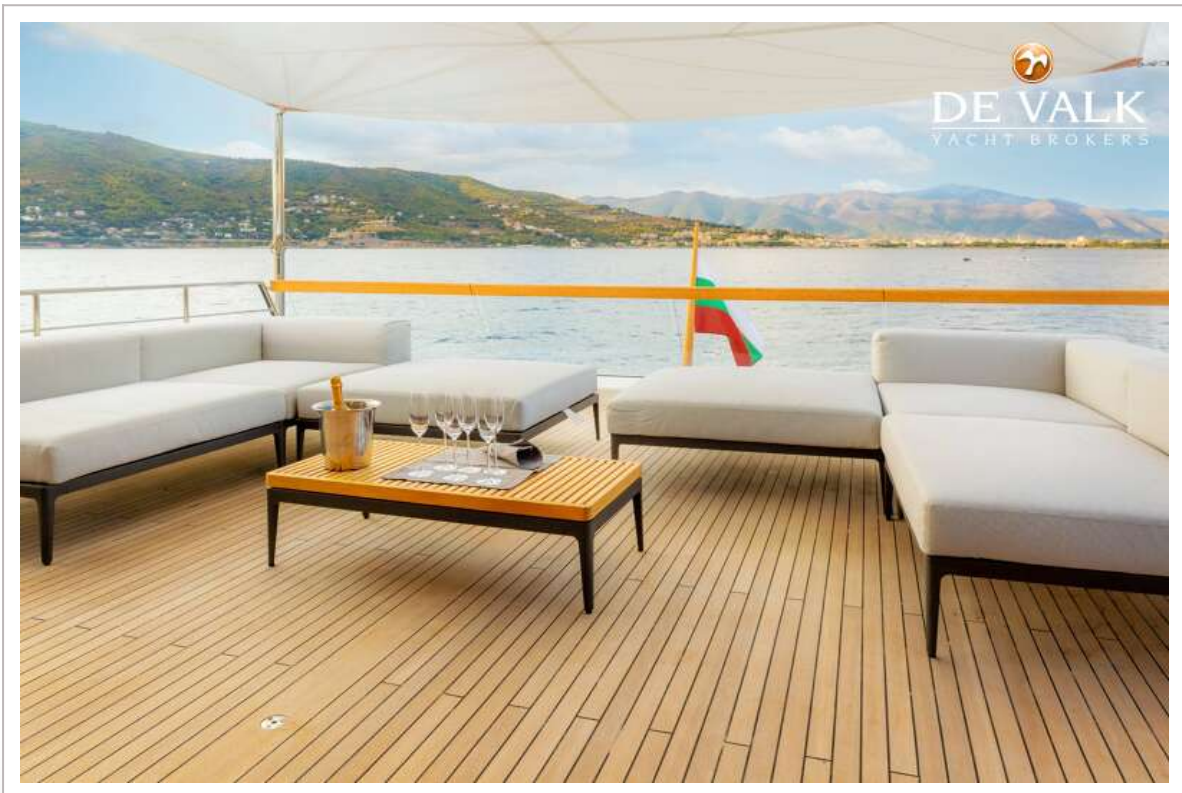
SANLORENZO SX 88



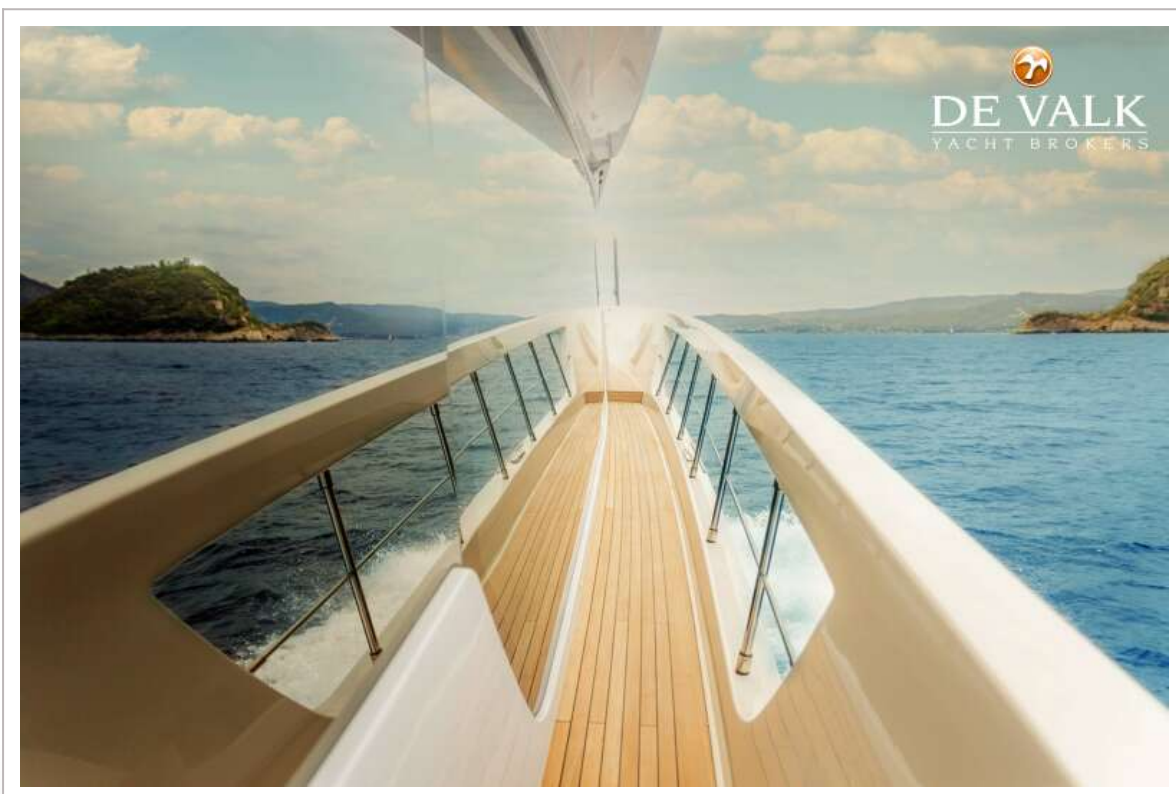
SANLORENZO SX 88



SANLORENZO SX 88



SANLORENZO SX 88



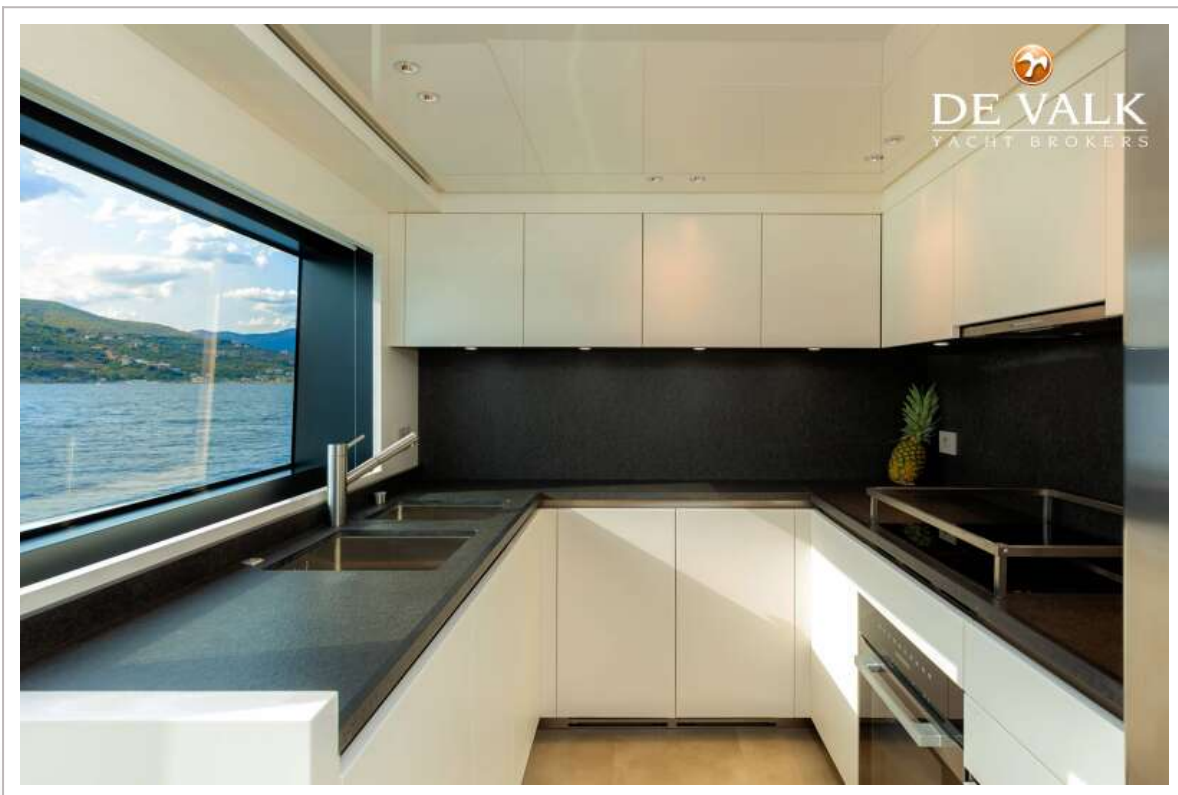
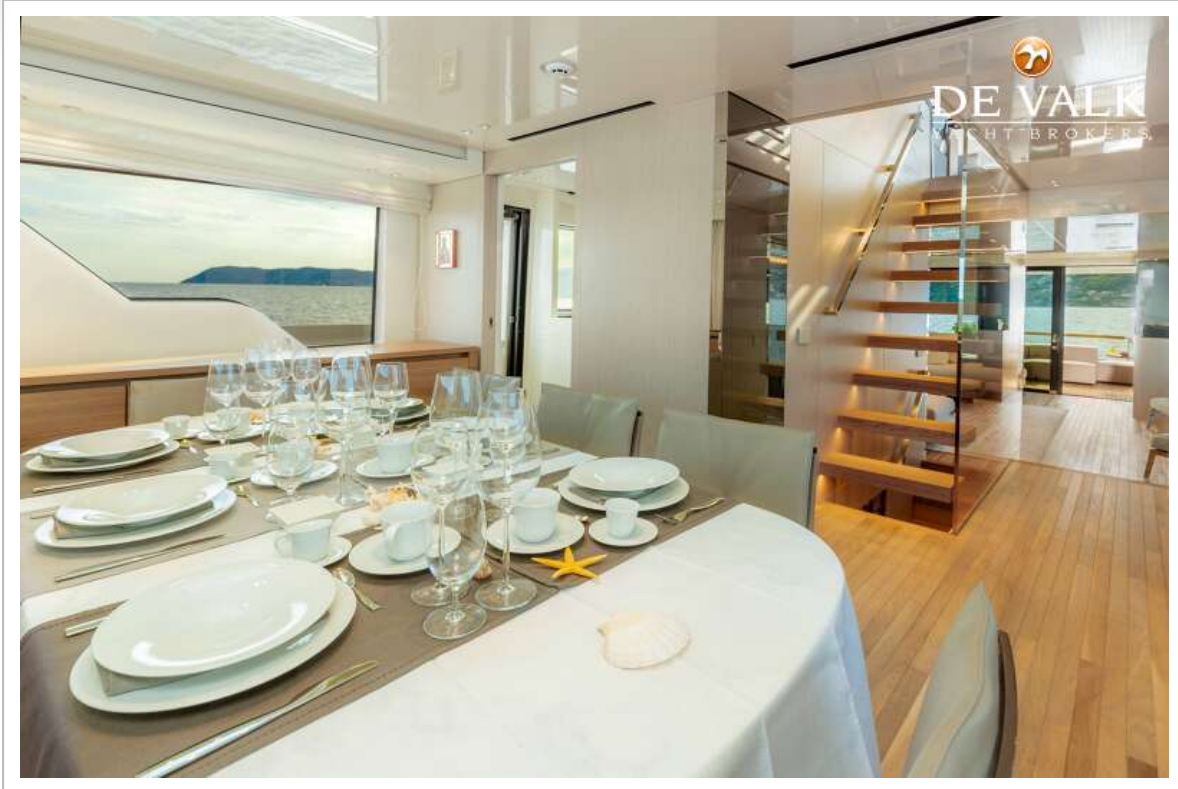


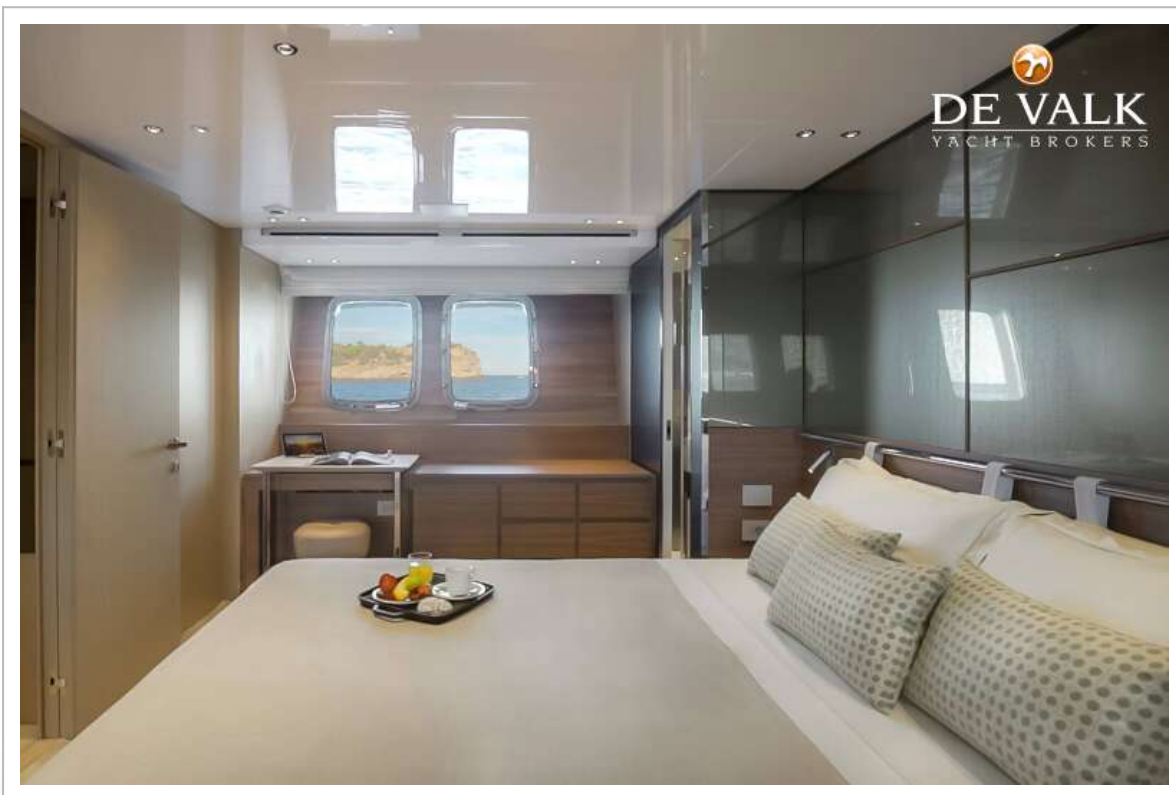
SANLORENZO SX 88

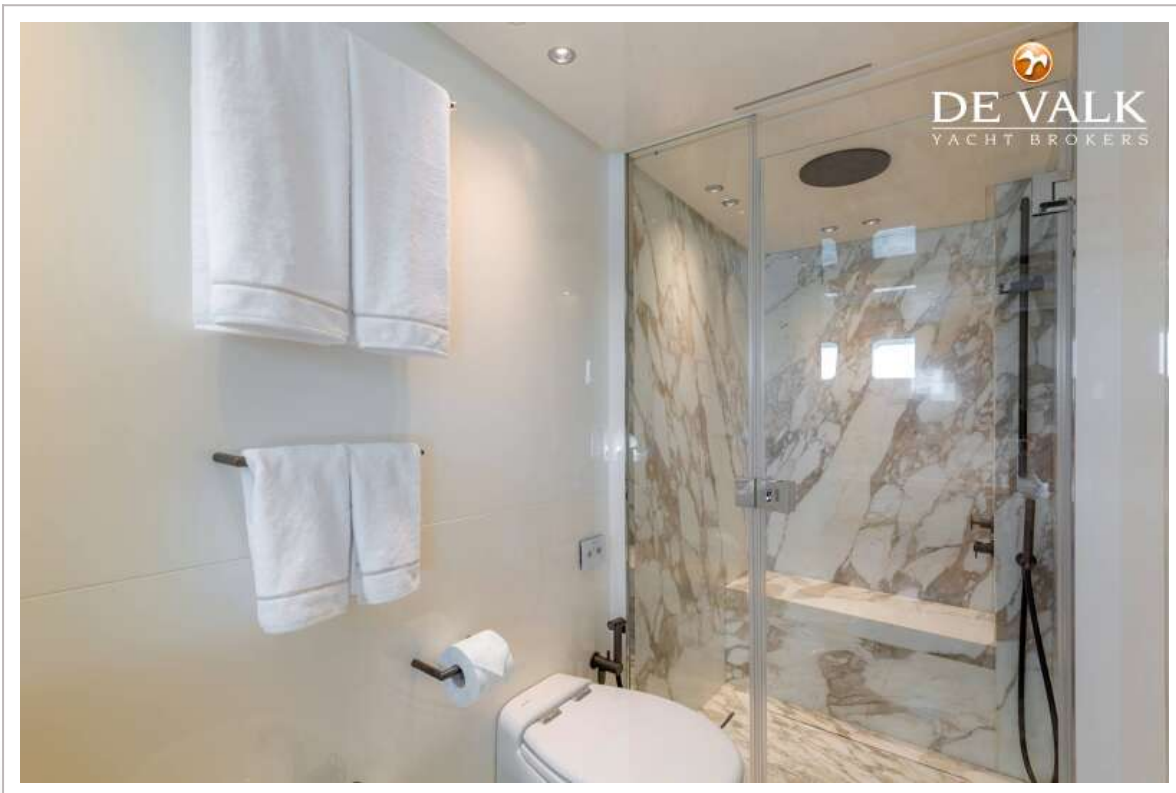
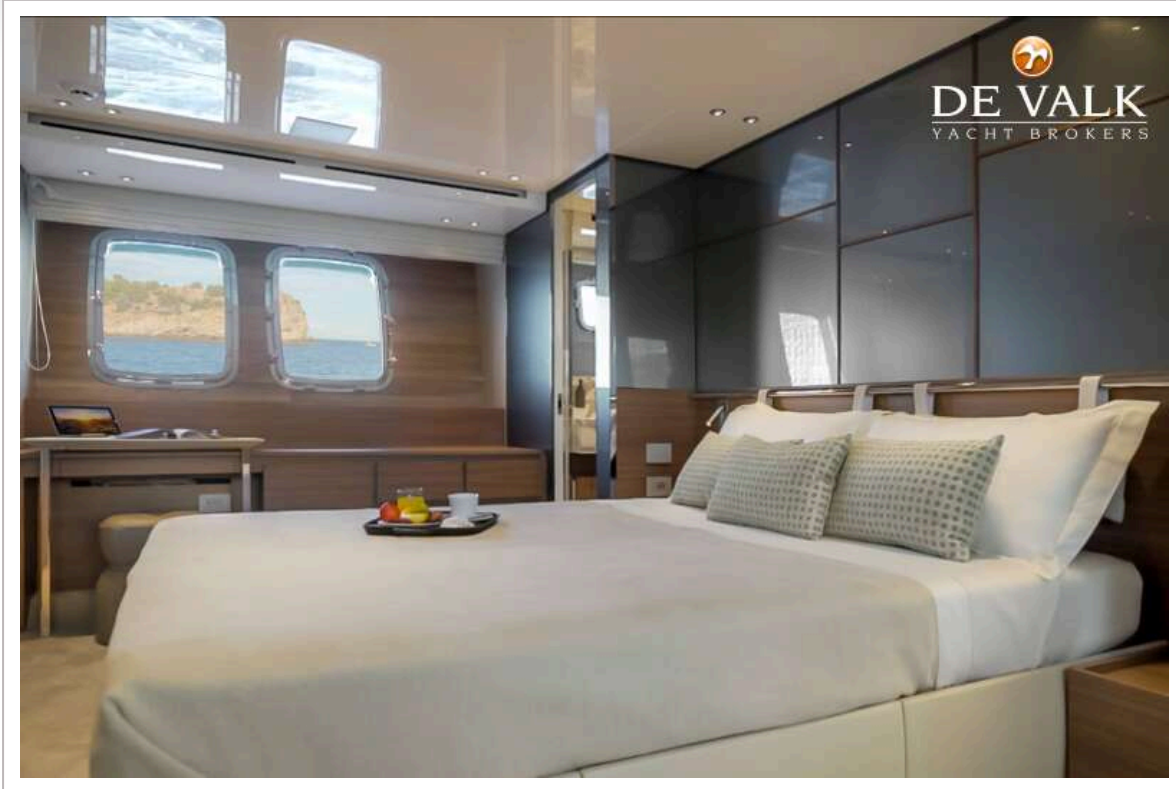


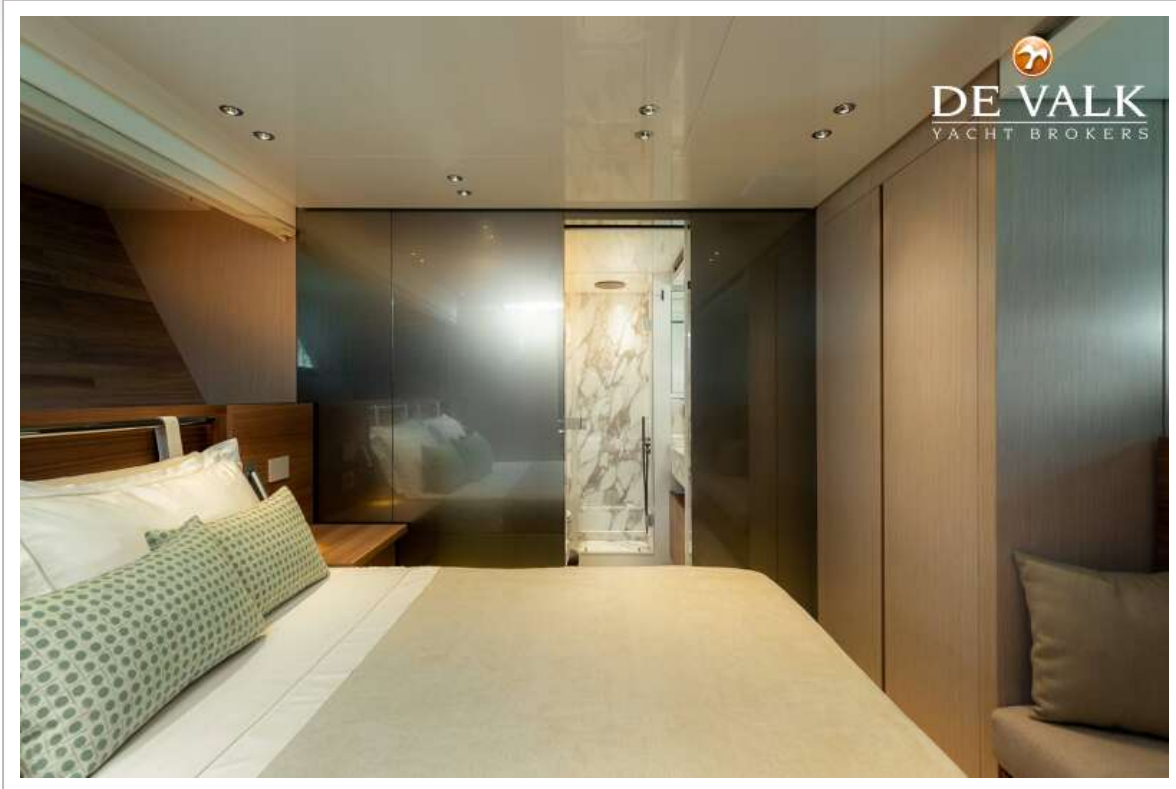
SANLORENZO SX 88



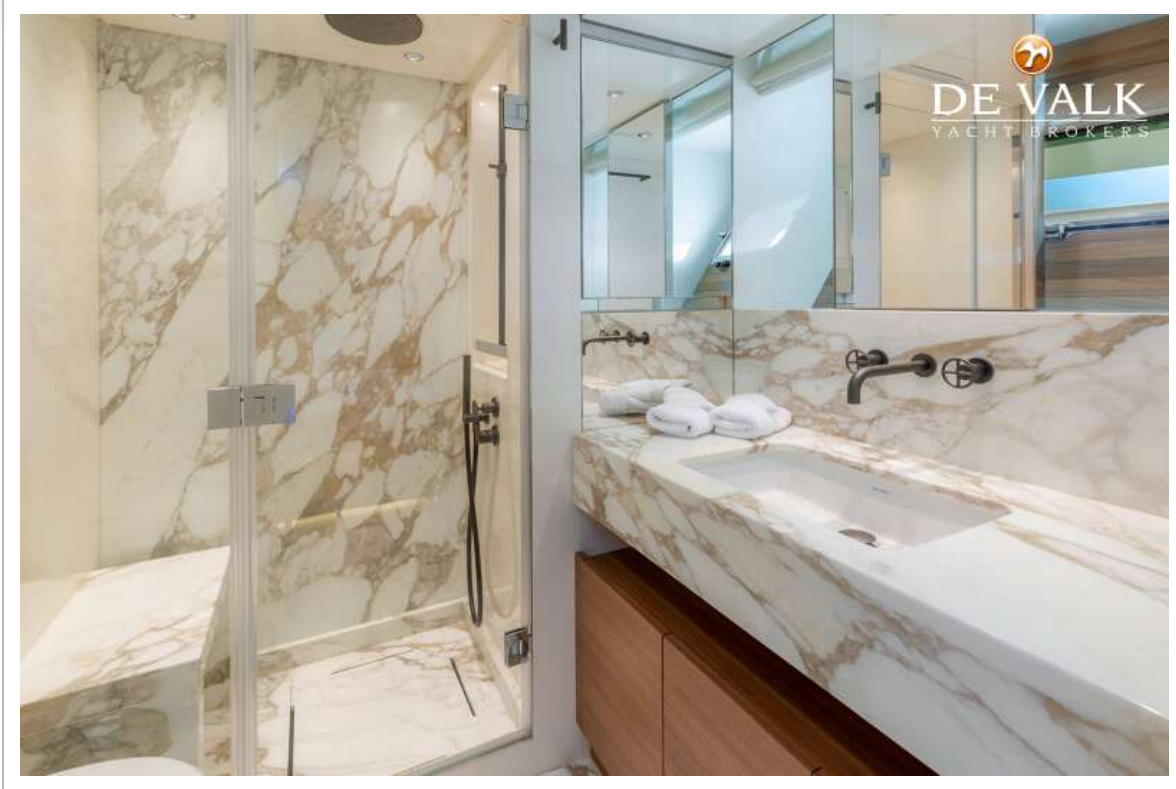




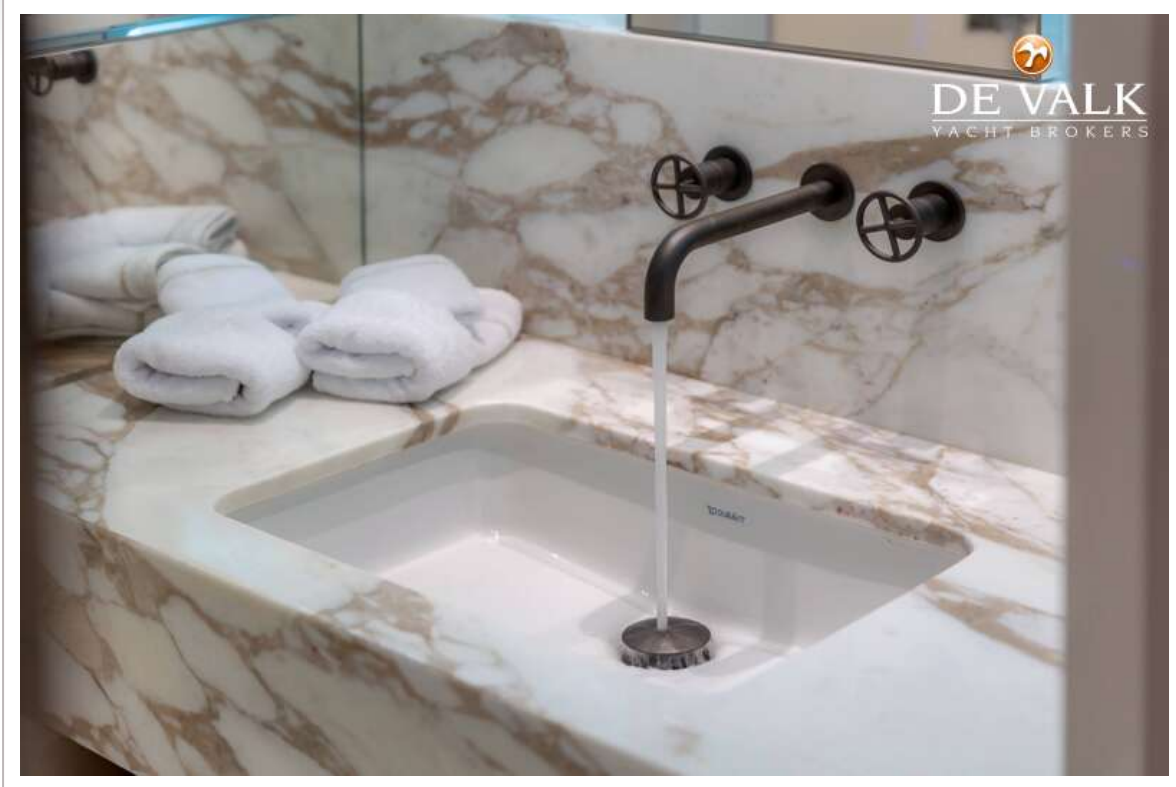




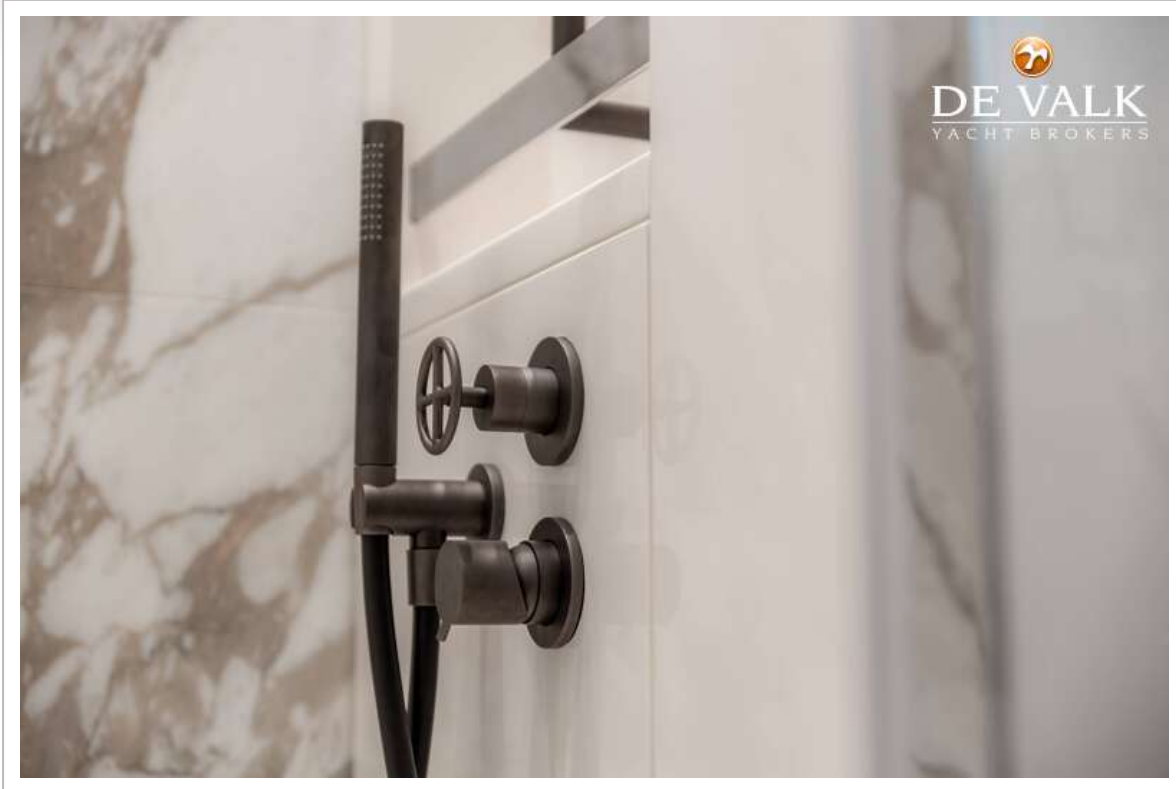
SANLORENZO SX 88



SANLORENZO SX 88



SANLORENZO SX 88

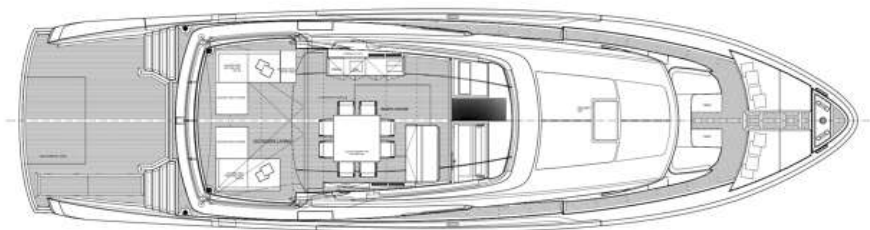


SANLORENZO SX 88

 SX
88/
88

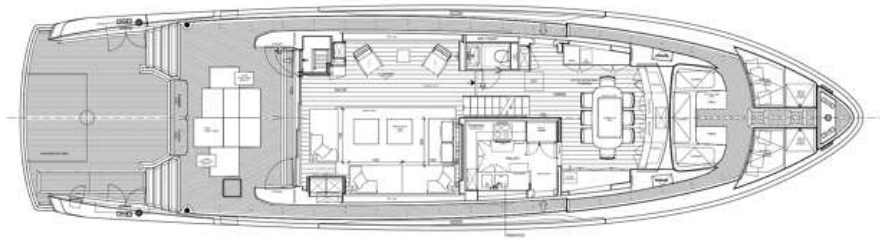


 SX
88/
88





SX
88/



SX
88/

