



DE VALK  
YACHT BROKERS



## HANSE 430



DE VALK  
YACHT BROKERS

## BROKER'S COMMENTS

This beautiful Hanse 430 is in perfect condition and comes very well equipped. Spacious and safe cockpit and rigged for short handed sailing with electric winches and self tacking jib, retractable bow thruster and electric windlass. The performance matches the modern design features and a joy at the helm. The popular layout with centerline double berth forward with own bathroom and twin double aft with shared facilities . Ideal for (performance) cruising with family and friends. No charter.

*Henk Sijbranda*

## SPECIFICATIONS

<b>Dimensions</b>	13.15 x 4.18 x 2.25 (m)	<b>Builder</b>	Hanse Yachts AG
<b>Built</b>	2010	<b>Cabins</b>	3
<b>Material</b>	GRP	<b>Berths</b>	6
<b>Engine(s)</b>	1 x Yanmar 4JH5E diesel	<b>Hp/Kw</b>	55 (hp), 40.48 (kw)
<b>Asking price</b>	sold (VAT )	<b>Lying</b>	at sales office

## CONTACT

<b>Sales office</b>	De Valk Hindeloopen	<b>Telephone</b>	+31 514 52 40 00
<b>Address</b>	Oosterstrand 1 8713 JS Hindeloopen The Netherlands	<b>E-mail</b>	hindeloopen@devalk.nl

## DISCLAIMER

These particulars are given in good faith as supplied but cannot be guaranteed.



# HANSE 430

## GENERAL

<b>Model</b>	HANSE 430
<b>Type</b>	sailing yacht
<b>LOA (m)</b>	13,15
<b>Beam (m)</b>	4,18
<b>Draft (m)</b>	2,25
<b>Headroom (m)</b>	1,95
<b>Year built</b>	2010
<b>Builder</b>	Hanse Yachts AG
<b>Country</b>	Germany
<b>Designer</b>	Judel & Vrolijk
<b>Displacement (t)</b>	10,6
<b>Ballast (tonnes)</b>	3,2
<b>CE norm</b>	A
<b>Hull material</b>	GRP
<b>Hull colour</b>	grey
<b>Hull shape</b>	round-bilged
<b>Keel type</b>	fin keel with bulb
<b>Superstructure material</b>	GRP
<b>Rubbing strake</b>	stainless steel
<b>Deck material</b>	GRP
<b>Cockpit deck finish</b>	teak
<b>Antifouling (year)</b>	2022
<b>Window frame</b>	aluminium
<b>Window material</b>	polycarbonate Tempered glass and
<b>Deckhatch</b>	3 opening flush hatches - Lewmar
<b>Fuel tank (litre)</b>	stainless steel 230 ltr.
<b>Level indicator (fuel tank)</b>	yes
<b>Freshwater tank (litre)</b>	polyethylene 325 ltr.
<b>Blackwater tank (litre)</b>	polyethylene 2x
<b>Blackwater tank extraction</b>	deck extraction + uw line



Wheel steering	2x Jefa
Emergency tiller	yes

## ACCOMMODATION

Cabins	3
Berths	6
Interior	mahogany
Open cockpit	yes
Saloon	Yes
Headroom saloon (m)	1,95
Heating	diesel ducted hot air   2x Eberspächer
Navigation center	yes
Chart table	yes
Aft Cabin	Two cabins
Galley	yes
Countertop	corian
Sink	stainless steel   Double
Cooker	calor gas   2 burner
Oven	In cooker
Fridge	Extra large 12 V fridge of approx. 130 l, top and front loader.   Isotherm + freezer compartment
Hot water system	220V + engine
Water pressure system	electrical
Owners cabin	double bed
Bed length (m)	2 mtr.
Wardrobe	hanging/drawers/shelves
Bathroom	en suite
Toilet	Jabsco
Toilet system	yes
Wash basin	yes
Shower	yes



<b>Guest cabin 1</b>	double bed   aft cabin
<b>Bed length (m)</b>	2 mtr.
<b>Wardrobe</b>	hanging and shelves
<b>Guest cabin 2</b>	double bed   aft cabin
<b>Bed length (m)</b>	2 mtr.
<b>Wardrobe</b>	hanging and shelves
<b>Bathroom</b>	shared
<b>Toilet</b>	Jabsco
<b>Toilet system</b>	electric
<b>Wash basin</b>	yes
<b>Shower</b>	yes

## MACHINERY

<b>No of engines</b>	1
<b>Make</b>	Yanmar
<b>Type</b>	4JH5E
<b>HP</b>	55
<b>kW</b>	40,48
<b>Fuel</b>	diesel
<b>Year installed</b>	2010
<b>Maximum speed (kn)</b>	8
<b>Cruising speed (kn)</b>	7
<b>Engine cooling system</b>	freshwater heat exchanger
<b>Drive</b>	sail-drive
<b>Saildrive seal</b>	yes
<b>Engine controls</b>	yes
<b>Gearbox</b>	mechanical
<b>Bowthruster</b>	electric   RCM Marine   retractable
<b>Exhaust</b>	watercooled
<b>Propeller type</b>	folding
<b>Propeller blades</b>	3



<b>Manual bilge pump</b>	yes
<b>Electric bilge pump</b>	yes
<b>Bilge alarm</b>	yes
<b>Electrical installation</b>	12 / 220 Volt
<b>Start battery</b>	1x 70 Ah
<b>Service battery</b>	2x 150Ah   Victron Energy
<b>Bowthruster battery</b>	yes
<b>Battery monitor</b>	Victron Energy
<b>Battery charger/inverter</b>	Sterling Power Pro Charge 12v / 50A Victron Energy MultiPlus 12V   1600Va   70Ah
<b>Shorepower</b>	with cable

## NAVIGATION

<b>Compass</b>	Plastimo Contest 130
<b>Multi control display</b>	Raymarine ST60+ TRIDATA
<b>Windset</b>	Raymarine ST60+ WIND & 2x CH WIND
<b>VHF</b>	Raymarine RAY240E
<b>Autopilot</b>	Raymarine ST6002 + SmartController
<b>Radar</b>	Raymarine
<b>Radar/GPS/plotter</b>	Raymarine C120 W
<b>AIS receiver</b>	yes
<b>Navigation lights</b>	yes

## EQUIPMENT

<b>Sprayhood with grab rail</b>	yes
<b>Cockpit cover</b>	yes
<b>Winter cover</b>	yes
<b>Cockpit table</b>	yes
<b>Boarding ladder</b>	stainless steel
<b>Deck shower</b>	yes
<b>Anchor</b>	Delta



Anchor chain	Stainless steel
Windlass	electrical   Lewmar
Outboard support	yes
Sea railing	wire
Grab rail (superstructure)	stainless steel
Pushpit	yes
Pulpit	yes
Fenders	yes
Mooring lines	yes
Radio-cd player	Clarion
Cockpit speakers	yes
Speakers in salon	yes
Clock - barometer	yes
Fire extinguisher	yes

## RIGGING

Rigging	fractional
Standing rigging	wire
Brand mast	Seldén
Material mast	aluminium
Spreaders	2 pair
Mainsail	North sails
Mainsail cover	With main-drop bag
Battcars	yes
Fully battened mainsail	yes
Jib	North sails
Genoa furler	Under deck furling system
Self tacking jib installation	yes
Reefing System	quick-one-line-reefing   3x
Backstay adjuster	hydraulic
Boomvang	gasspring



**Primary sheet winch**

4x Lewmar 46 | one electric

**Halyard winches**

2x Lewmar 46 | one electric

**Winchcovers**

Yes





# HANSE 430



# HANSE 430





# HANSE 430



# HANSE 430





# HANSE 430



# HANSE 430





# HANSE 430

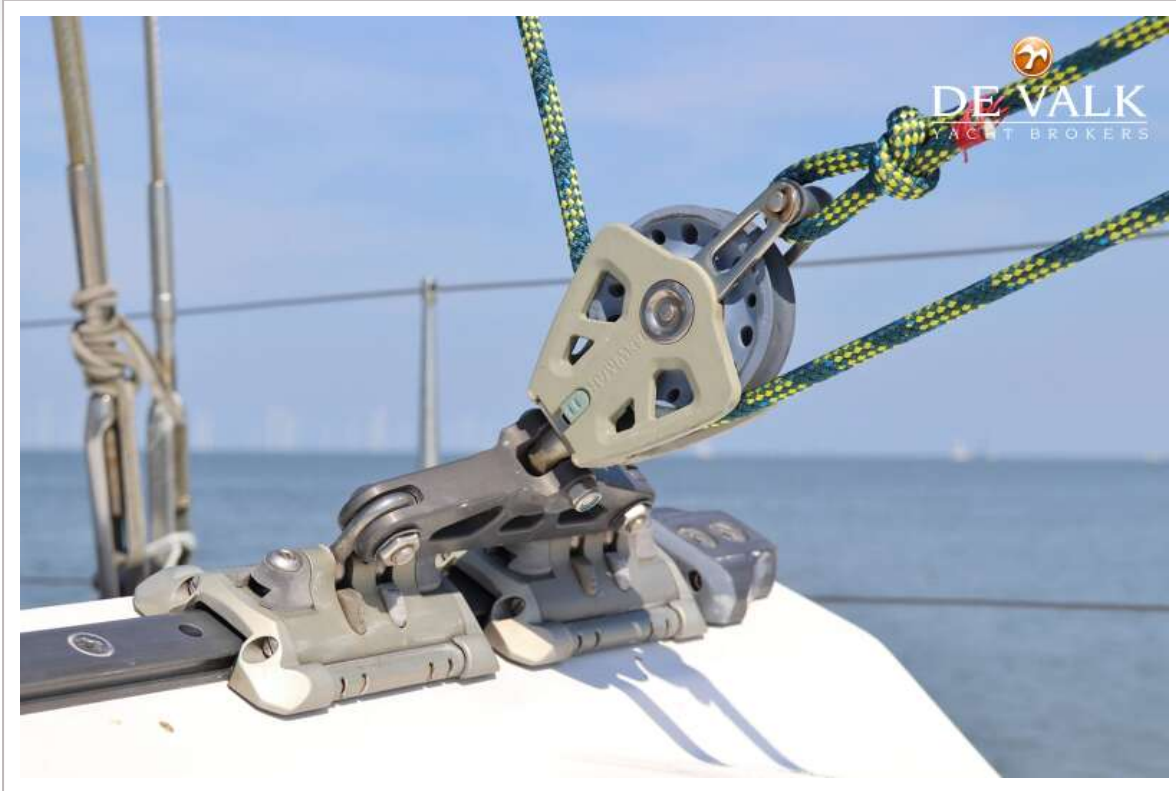


# HANSE 430





# HANSE 430



# HANSE 430



# HANSE 430





# HANSE 430

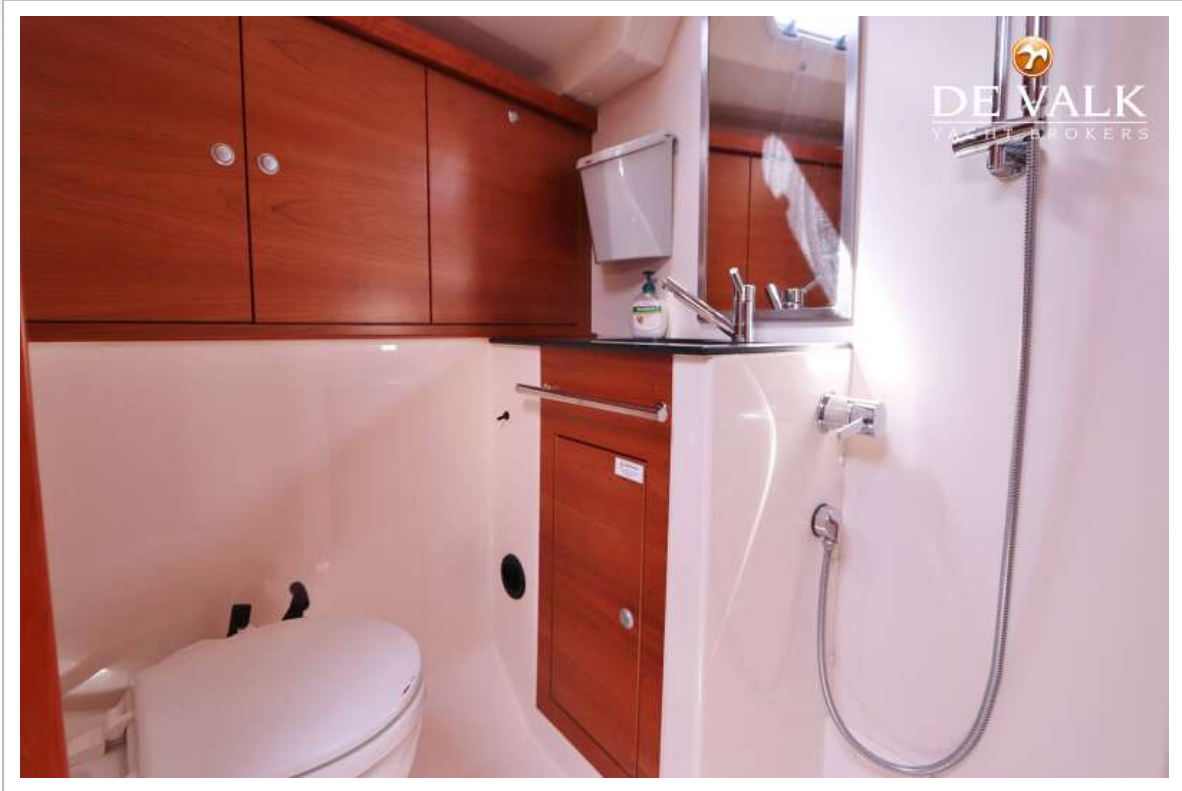


# HANSE 430

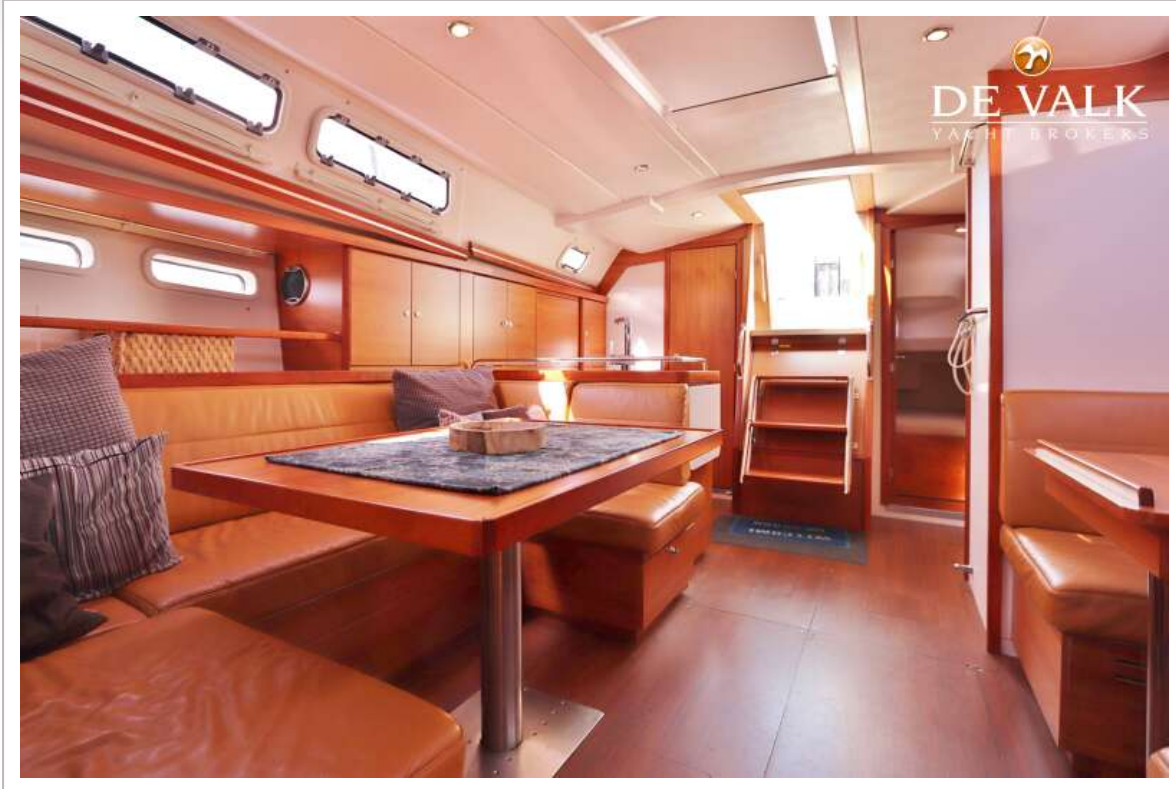




# HANSE 430

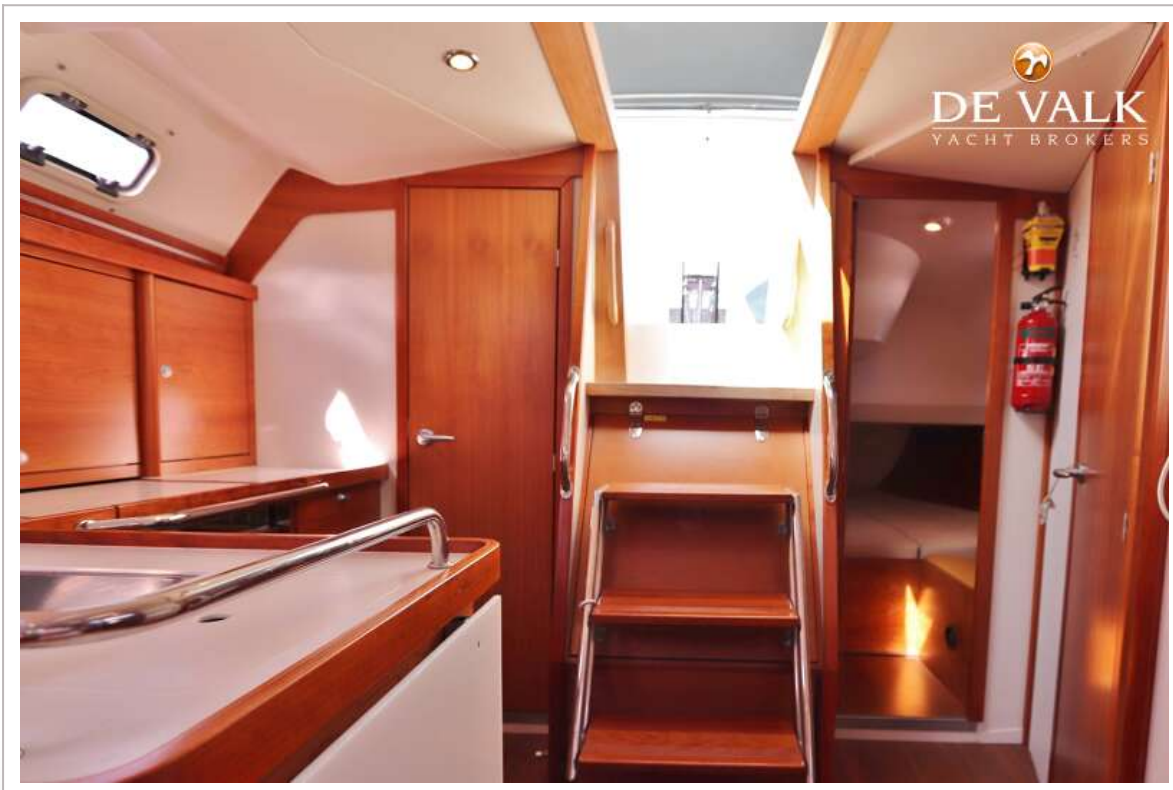


# HANSE 430



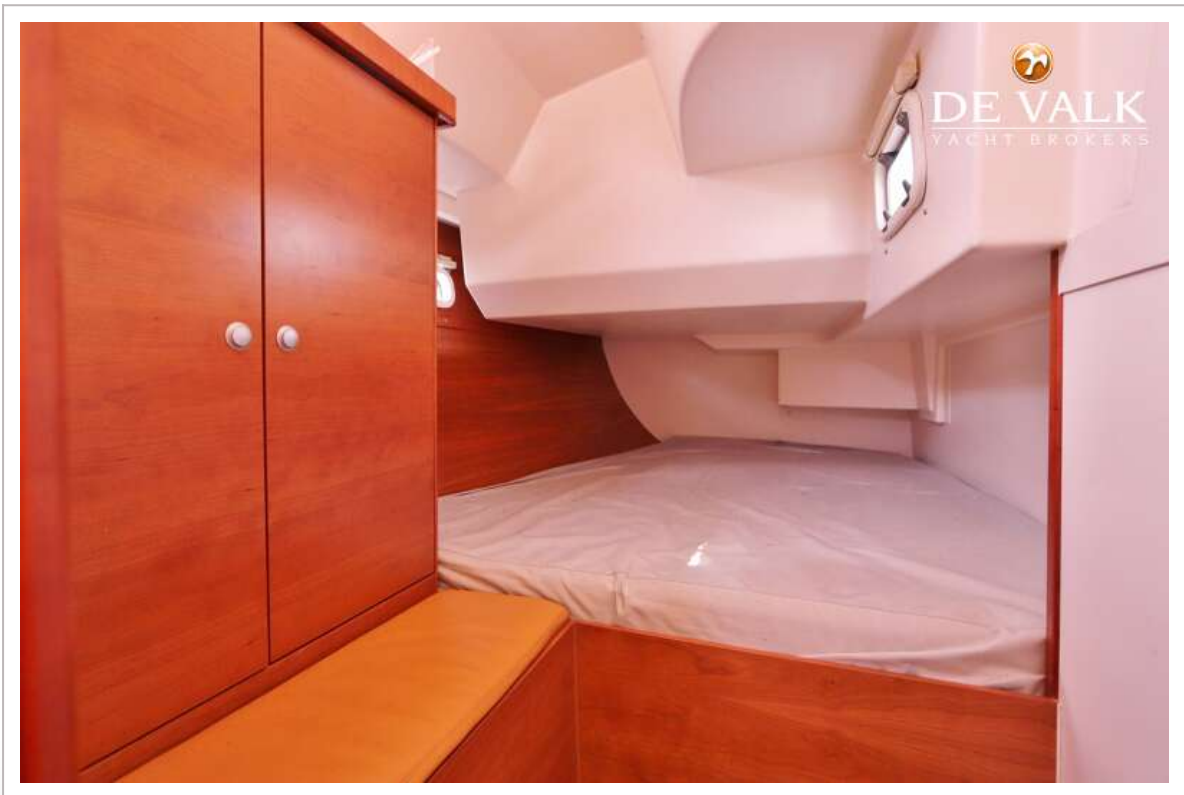


# HANSE 430





# HANSE 430



# HANSE 430



# HANSE 430

