



DE VALK
YACHT BROKERS



PRINCESS V42



DE VALK
YACHT BROKERS

PRINCESS V42

BROKER'S COMMENTS

The Princess V42 is an exceptionally sought-after model with a proven track record and is an extremely versatile motor-cruiser, ideal for day trips as well as being suited for longer cruises. The cockpit offers two large seating areas, a wet bar and stowage for a tender or jetski on the swimming platform. In the saloon an U-shaped sofa/dinette, converting to double berth, cocktail bar and beautifully crafted galley. "Savari" is powered by 2 X Volvo Penta 285HP Diesel engines and a bow thruster for easy docking. Visiting in Amsterdam by appointment.

Reinier van der Wolf

SPECIFICATIONS

Dimensions	12.71 x 3.67 x 0.95 (m)	Builder	Princess Yachts International plc.
Built	2003	Cabins	2
Material	GRP	Berths	6
Engine(s)	2 x Volvo Penta Kad 300 diesel	Hp/Kw	2 x 280 (hp), 206.08 (kw)
Asking price	€ 169.500 (VAT Paid)	Lying	at sales office

CONTACT

Sales office	De Valk Monnickendam	Telephone	+31 299 65 63 50
Address	Hoogedijk 6 1145 PM Katwoude The Netherlands	E-mail	monnickendam@devalk.nl

DISCLAIMER

These particulars are given in good faith as supplied but cannot be guaranteed.



GENERAL

Model	PRINCESS V42
Type	motor yacht
LOA (m)	12,71
Beam (m)	3,67
Draft (m)	0,95
Air draft (m)	3,50
Year built	2003
Builder	Princess Yachts International plc.
Country	United Kingdom
Designer	Bernard Olesinski
CE norm	B
Hull material	GRP
Hull colour	white
Hull shape	deep-V
Superstructure material	GRP
Deck material	GRP
Deck finish	non-skid moulded in
Superstructure deck finish	non-skid moulded in
Cockpit deck finish	teak
Antifouling (year)	2021
Deckhatch	2 X
Portholes	8 X
Fuel tank (litre)	360 L
Fuel tank 2 (litre)	360 L
Level indicator (fuel tank)	yes
Freshwater tank (litre)	230 L
Wheel steering	hydraulic

ACCOMMODATION

Cabins	2
--------	---



PRINCESS V42

Berths	6
Floor	carpet
Headroom saloon (m)	approx. 1,95 M.
Heating	diesel ducted hot air
Aft Cabin	yes
Dinette	yes
Dinette to convert into berth	yes
Sliding door to cockpit	yes
Galley	yes
Countertop	Duropol
Sink	stainless steel
Cooker	calor gas
Microwave/oven combi	Panasonic
Fridge	yes
Hot water system	yes
Water pressure system	electrical
Owners cabin	French bed
Wardrobe	hanging and drawers
Bathroom	en suite
Toilet	en suite
Toilet system	electric
Wash basin	in the bathroom
Shower	en suite
Guest cabin 1	twin single
Wardrobe	shelves
Wet bar	in cockpit + frigde

MACHINERY

No of engines	2
Make	Volvo Penta
Type	Kad 300



HP	280
kW	206.08
Fuel	diesel
Maximum speed (kn)	35
Engine hours	Approx 830
Engine cooling system	freshwater heat exchanger
Drive	Z-drive
Engine controls	electrical
Bowthruster	yes
Manual bilge pump	yes
Electric bilge pump	yes
Start battery	Varta
Service battery	Varta
Battery charger	Mastervolt 12/50-3
Inverter	2000 W.
Shorepower	yes
Trimtabs	yes

NAVIGATION

Compass	Danforth
Depth sounder	Raymarine ST60
Log	Raymarine ST60
VHF	Shipmate
Autopilot	Raymarine ST6001 + Remote autopilot
Rudder angle indicator	Raymarine ST60
Plotter/GPS	Raymarine e-127 hybrid touch
Navigation lights	LED
Searchlight	yes

EQUIPMENT

Fixed windscreen	yes
------------------	-----



Sprayhood	yes
Cockpit cover	new in 2019
Sun awning	yes
Cockpit cushions	yes
Cockpit table	yes
Bathing platform	yes
Boarding ladder	yes
Transom door	yes
Deck shower	yes
Anchor	yes
Anchor chain	yes
Windlass	electrical
Sea railing	tube
Pulpit	yes
Wiper	yes
Horn	yes
Fenders	yes
Mooring lines	yes
TV	yes
TV receiver	yes
Radio-cd player	yes
Cockpit speakers	yes
Speakers in salon	yes
Clock - barometer	yes



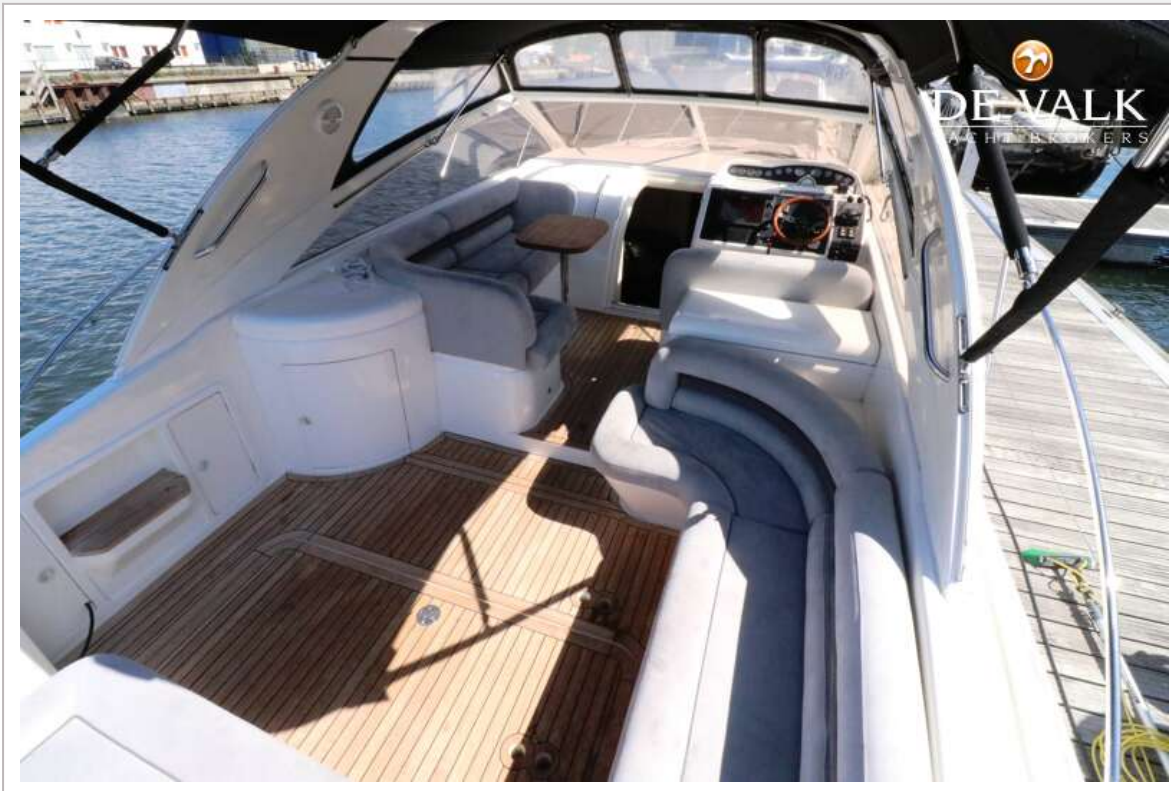
PRINCESS V42



PRINCESS V42



PRINCESS V42



PRINCESS V42



PRINCESS V42



PRINCESS V42



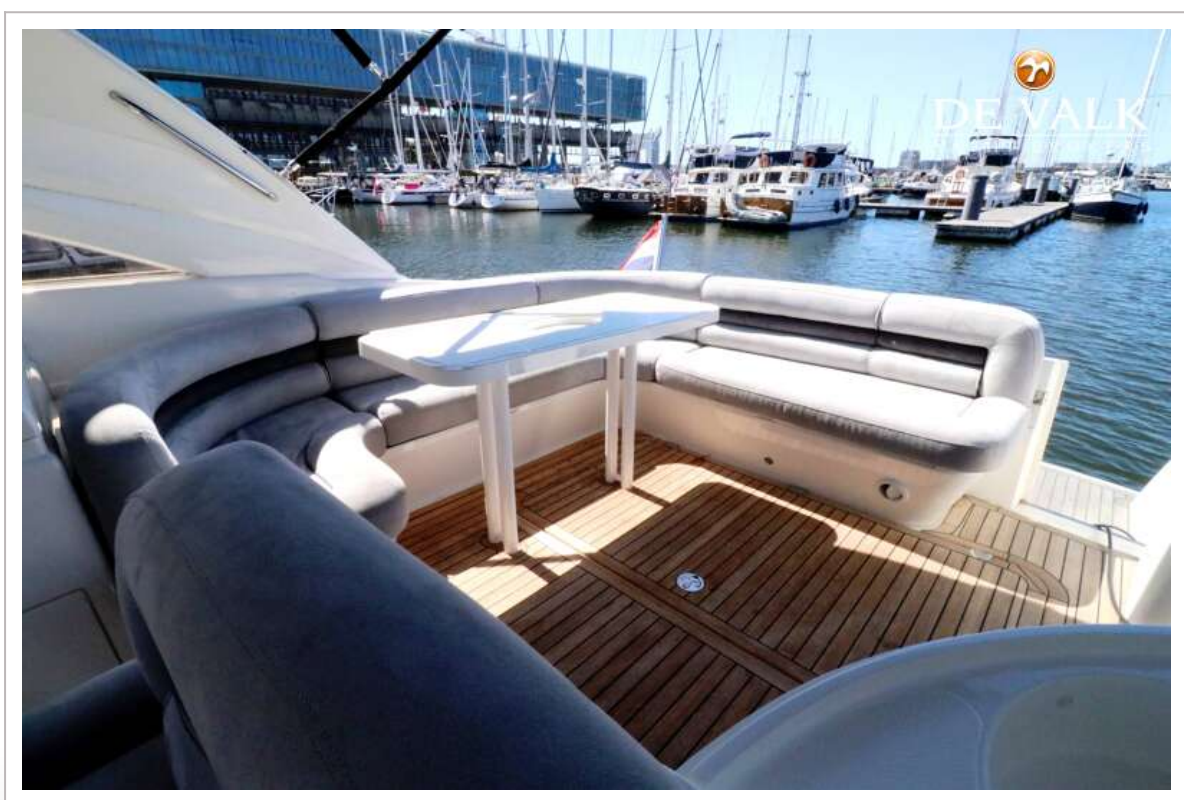
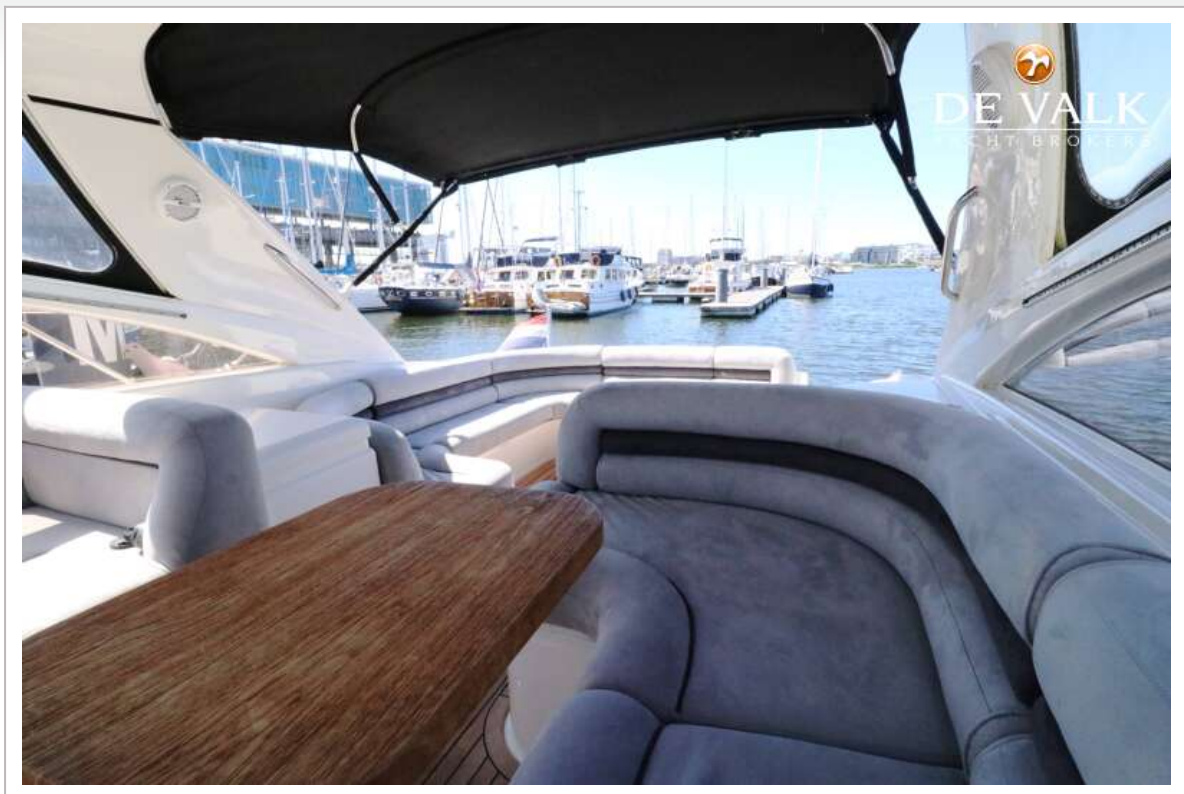
PRINCESS V42



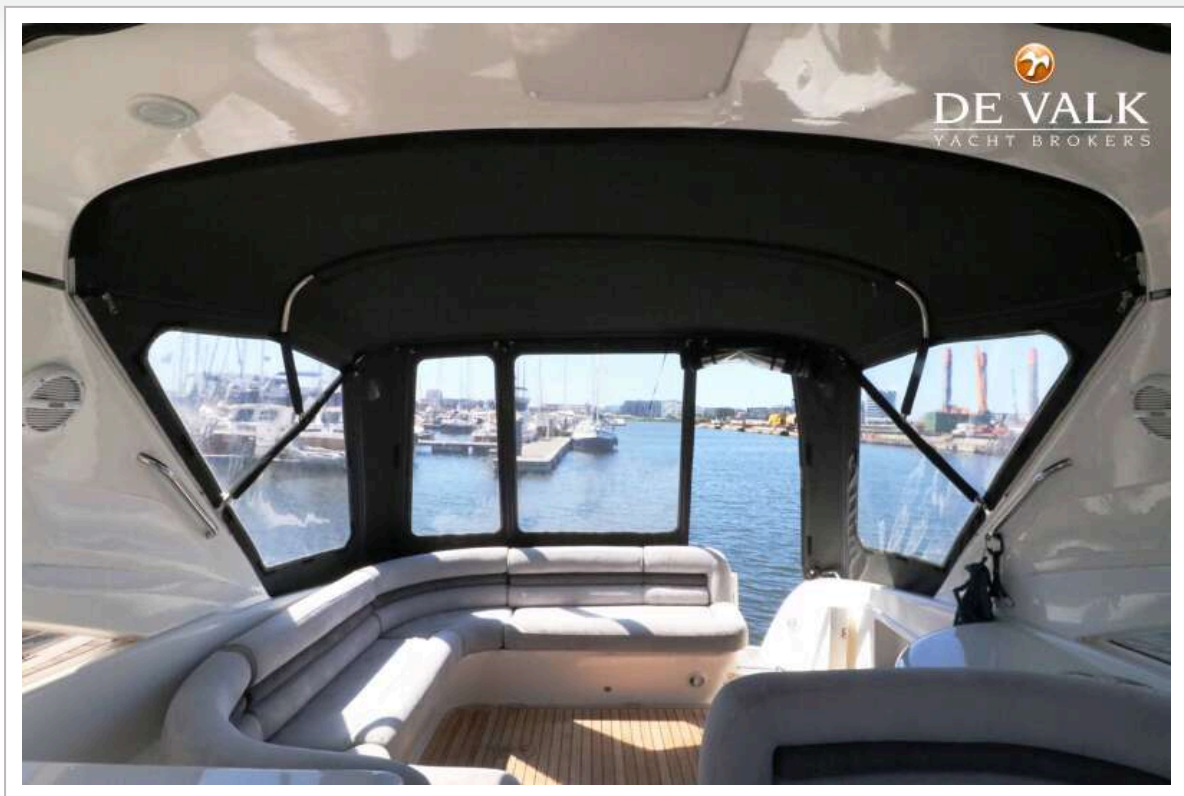
PRINCESS V42



PRINCESS V42



PRINCESS V42



PRINCESS V42



PRINCESS V42



PRINCESS V42



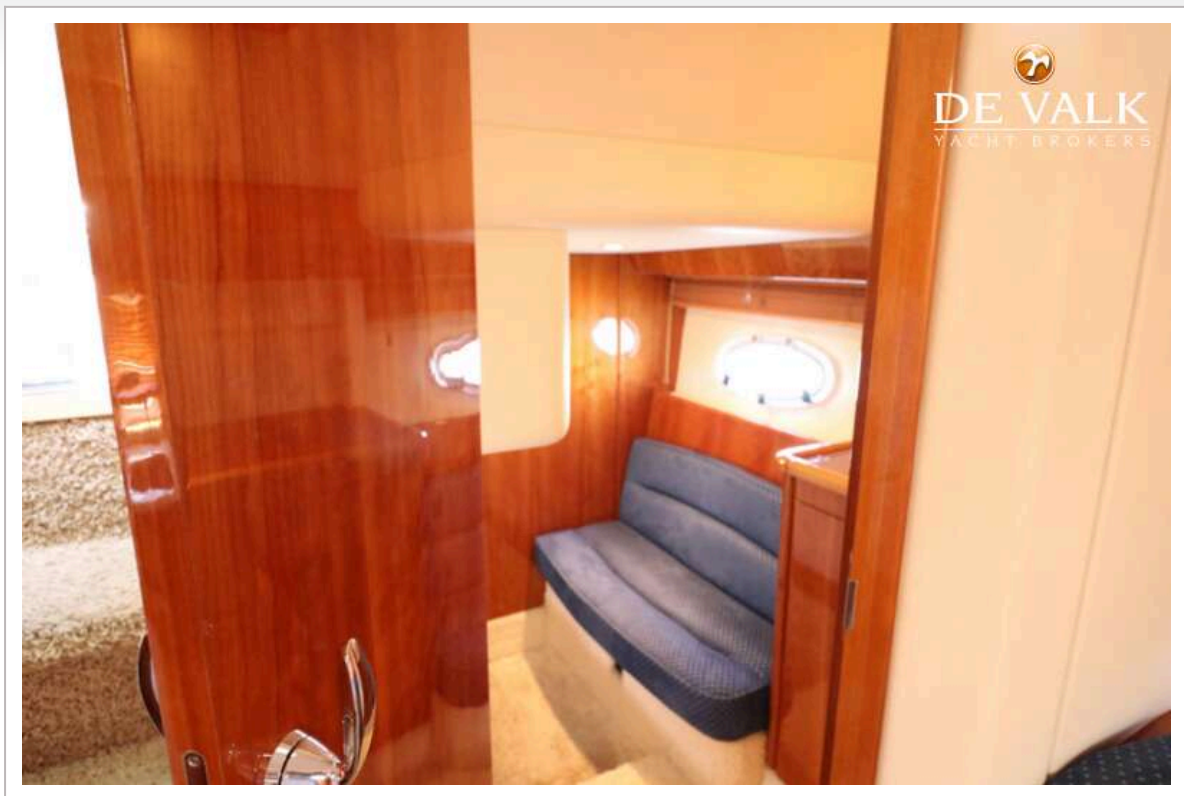
PRINCESS V42



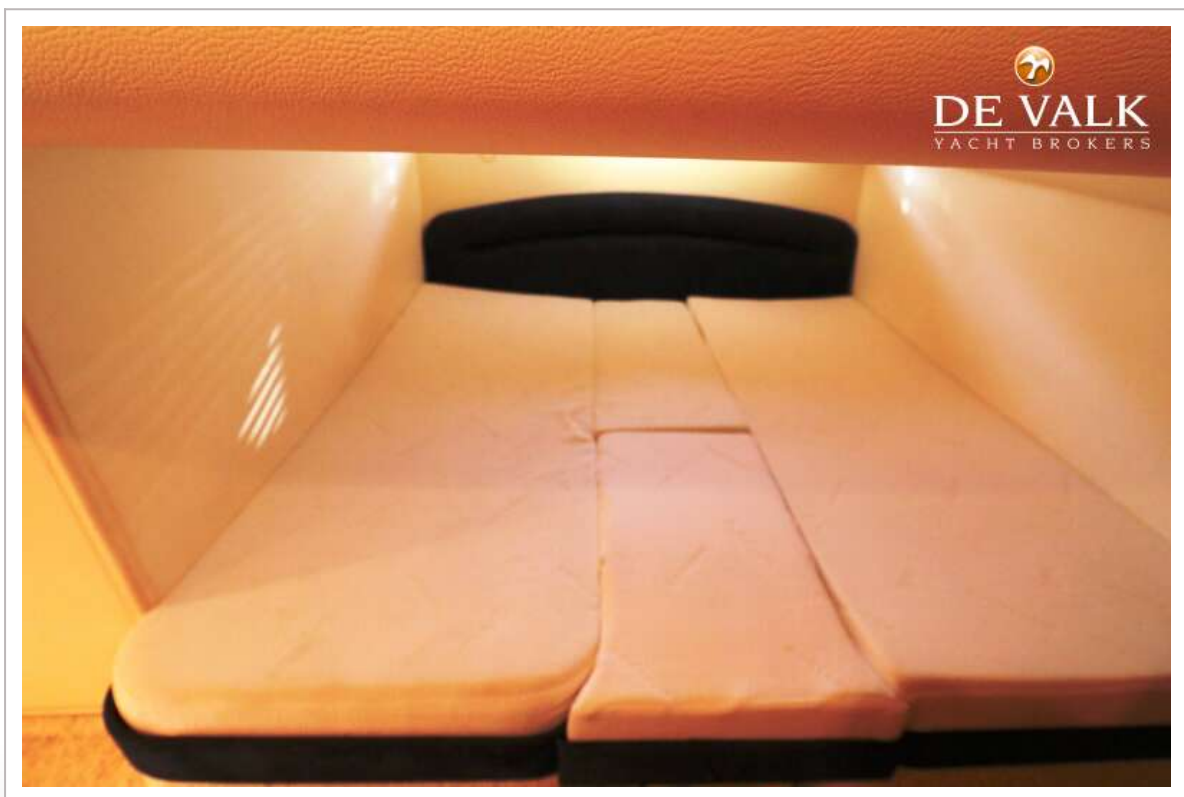
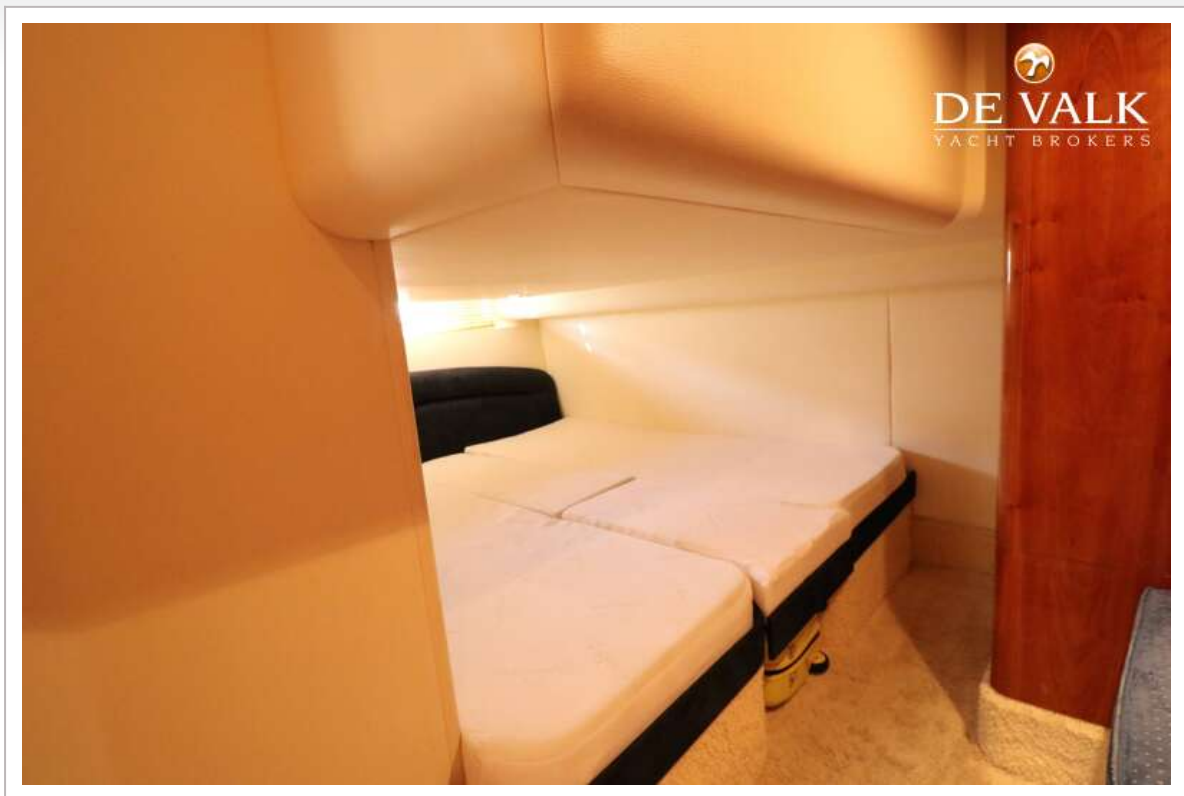
PRINCESS V42



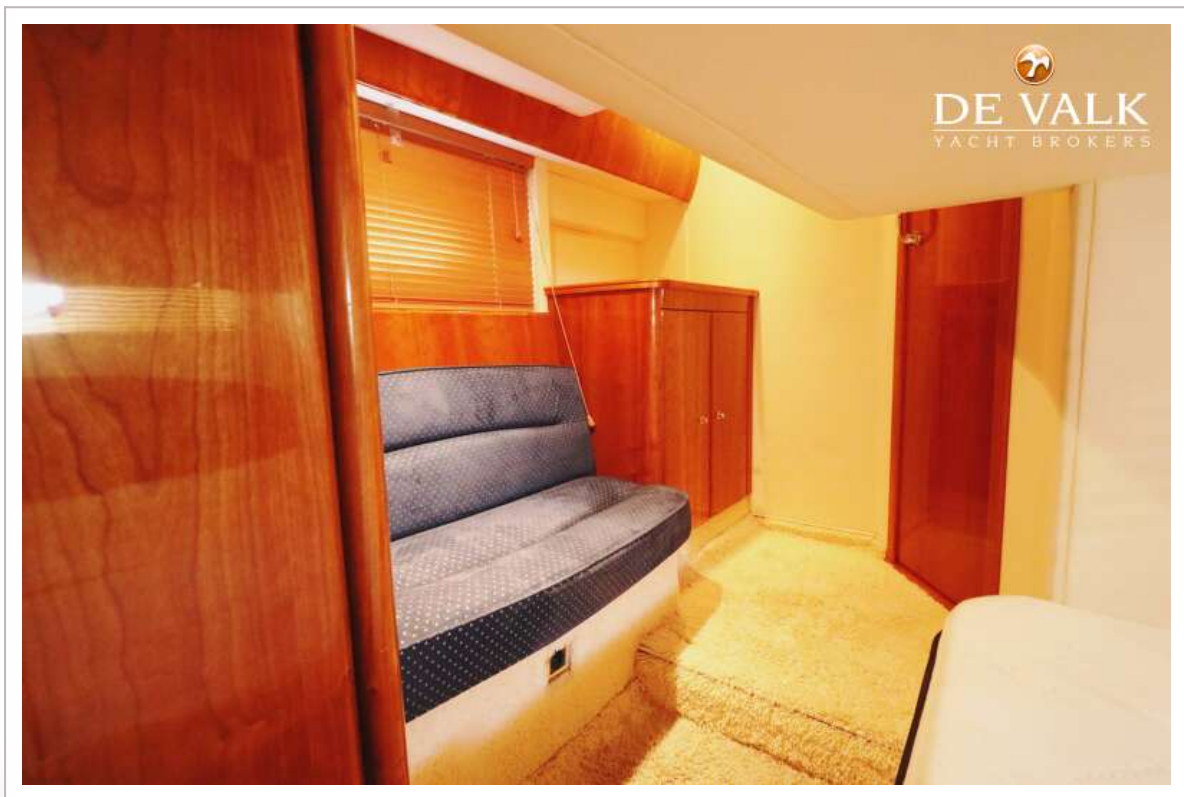
PRINCESS V42



PRINCESS V42



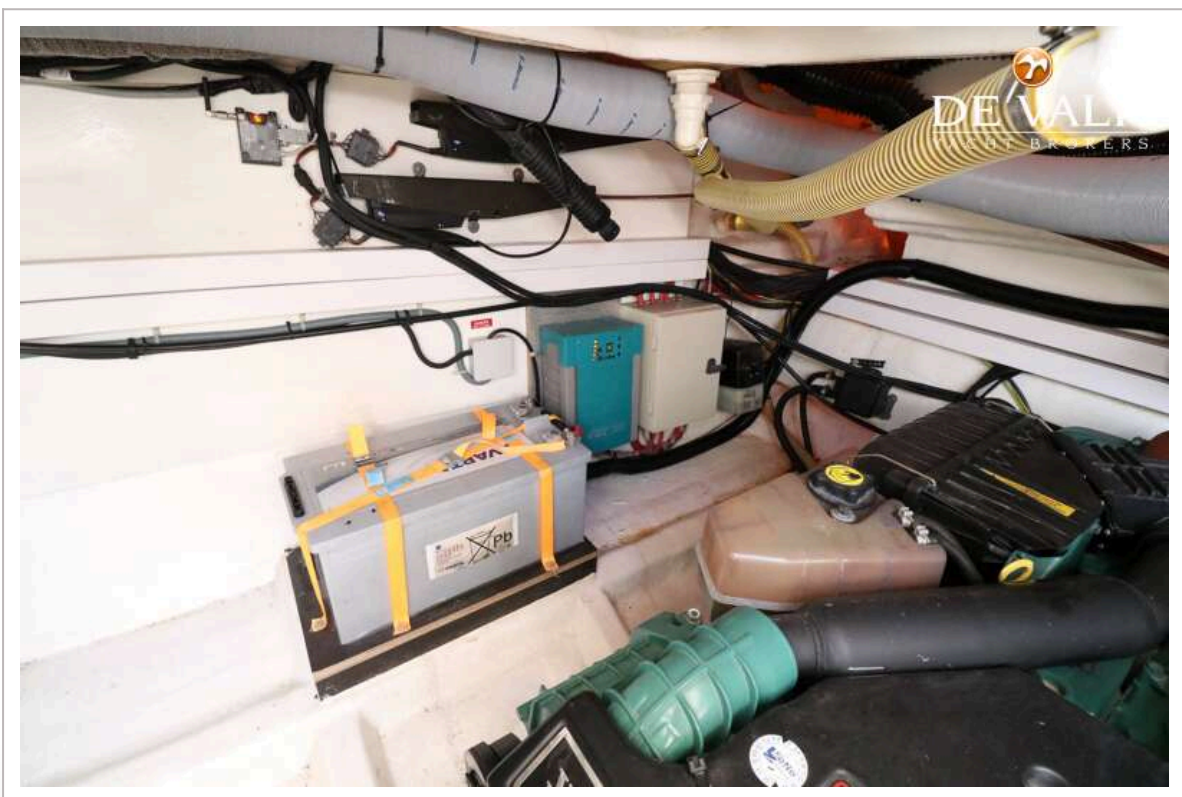
PRINCESS V42



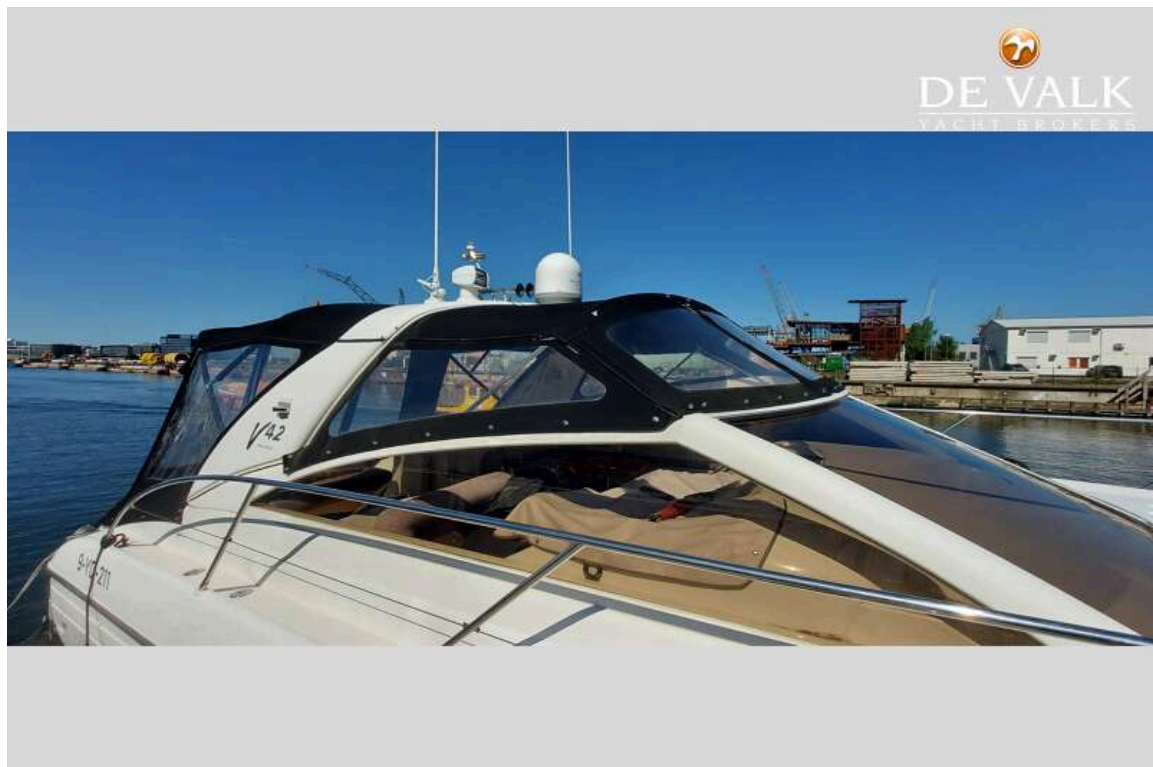
PRINCESS V42



PRINCESS V42



PRINCESS V42



PRINCESS V42

