



DE VALK
YACHT BROKERS



INTER 9000 NOR-LINE



DE VALK
YACHT BROKERS

BROKER'S COMMENTS

The Inter 9000 Nor-Line is the perfect example of good quality. Her clever layout ensures that there is plenty of space and comfort on board. This ship is equipped with a Simrad plotter system and electric bow thruster. The Inter 9000 Nor-Line is now available for viewing at our office in Loosdrecht.

Mark Hesselmans

SPECIFICATIONS

Dimensions	9.00 x 2.90 x 0.70 (m)	Builder	Inter Trading AS
Built	2005	Cabins	2
Material	GRP	Berths	5
Engine(s)	1 x Yanmar 4JH113-ITL diesel	Hp/Kw	101.00 (hp), 74.34 (kw)
Asking price	sold (VAT)	Lying	at sales office

CONTACT

Sales office	De Valk Loosdrecht	Telephone	+31 35 582 90 30
Address	't Breukeleveense Meentje 6 1231 LM Loosdrecht / Wijdemeren The Netherlands	E-mail	loosdrecht@devalk.nl

DISCLAIMER

These particulars are given in good faith as supplied but cannot be guaranteed.



GENERAL

Model	INTER 9000 NOR-LINE
Type	motor yacht
LOA (m)	9,00
Beam (m)	2,90
Draft (m)	0,70
Headroom (m)	1,90
Year built	2005
Builder	Inter Trading AS
Country	Norway
CE norm	C
Hull material	GRP
Hull colour	white
Superstructure material	GRP
Rubbing strake	rubber
Deck material	GRP
Superstructure deck finish	non-skid moulded in
Antifouling (year)	2021
Window frame	aluminium
Window material	glass
Portholes	yes
Radar arch	collapsible
Fuel tank (litre)	200
Level indicator (fuel tank)	Wema
Freshwater tank (litre)	100
Level indicator (freshwater)	Wema
Blackwater tank (litre)	100
Blackwater tank extraction	deck extraction
Outside helm position	yes
Extra info	Survey done in 2021



ACCOMMODATION

Cabins	2
Berths	5
Interior	teak
Floor	carpet & teak
Open cockpit	yes
Saloon	yes
Headroom saloon (m)	1,90+/-
Heating	Webasto online on engine
Chart table	yes
Aft Cabin	Convertible into extra berth
Dinette to convert into berth	yes
Opening door to cockpit	yes
Galley	yes
Sink	stainless steel
Cooker	Wallis Safe Flame 95D 2 burners
Microwave	Whirlpool
Fridge	Isotherm
Hot water system	yes
Water pressure system	electrical
Owners cabin	double bed
Wardrobe	shelves
Bathroom	shared
Toilet	shared
Toilet system	manual Jabsco
Wash basin	in the bathroom
Shower	shared
Guest cabin 1	Dinette
Wardrobe	drawers and shelves
Guest cabin 2	single bed



MACHINERY

No of engines	1
Make	Yanmar
Type	4JH113-ITL
HP	101
kW	74.34
Fuel	diesel
Maximum speed (kn)	11
Cruising speed (kn)	7
Engine hours	1635
Engine cooling system	freshwater heat exchanger
Drive	shaft
Engine controls	bowden cable
Gearbox	hydraulic
Bowthruster	electric
Exhaust	watercooled
Propeller type	fixed
Electric bilge pump	yes
Batteries	yes
Start battery	Winner Marine 100Ah (2022)
Service battery	Whisper Power AGM 12V-145Ah (2022)
Battery monitor	Whisper Power
Battery charger/inverter	Whisper power suprême combi 12V/230V/2000W/80A (installed 2022)
Shorepower	with cable

NAVIGATION

Compass	Plastimo
Depth sounder/log	Simrad Cruise 9 inch display (installed 2022)
Rudder angle indicator	VDO
Plotter	Simrad Cruise 9 inch display (installed 2022)



INTER 9000 NOR-LINE



INTER 9000 NOR-LINE



INTER 9000 NOR-LINE



INTER 9000 NOR-LINE









INTER 9000 NOR-LINE





INTER 9000 NOR-LINE



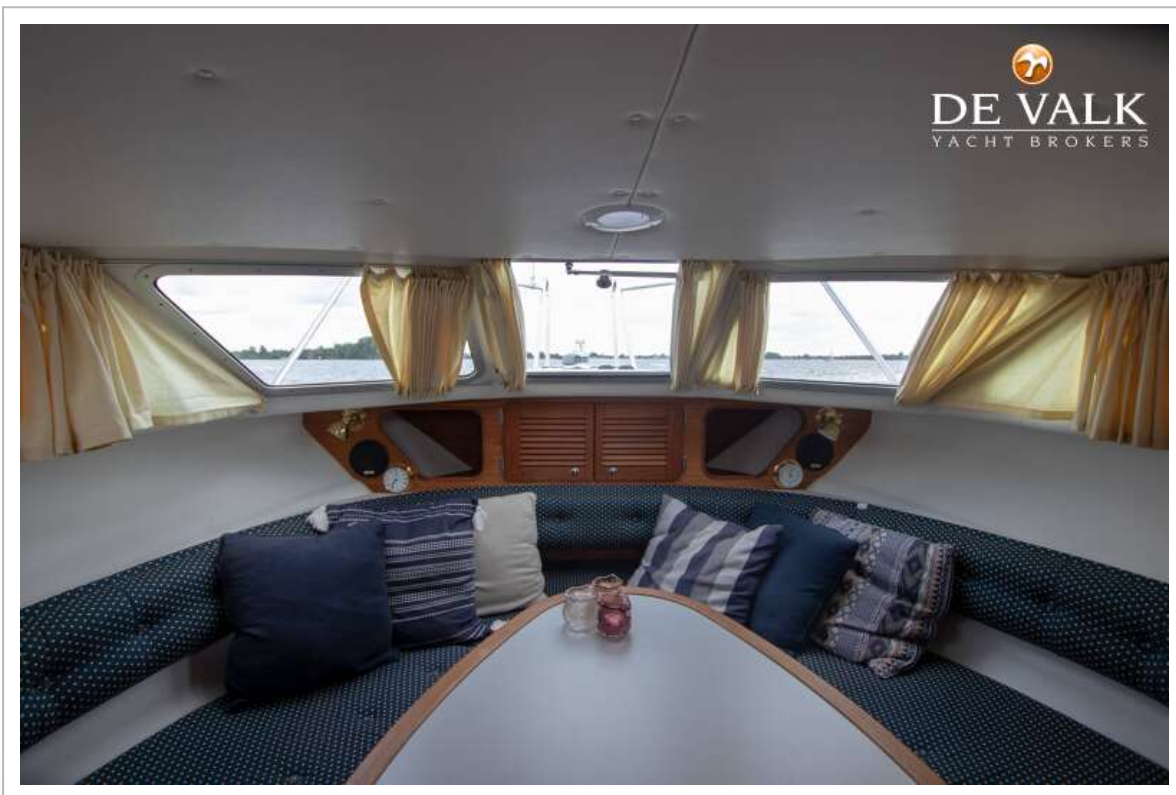
INTER 9000 NOR-LINE



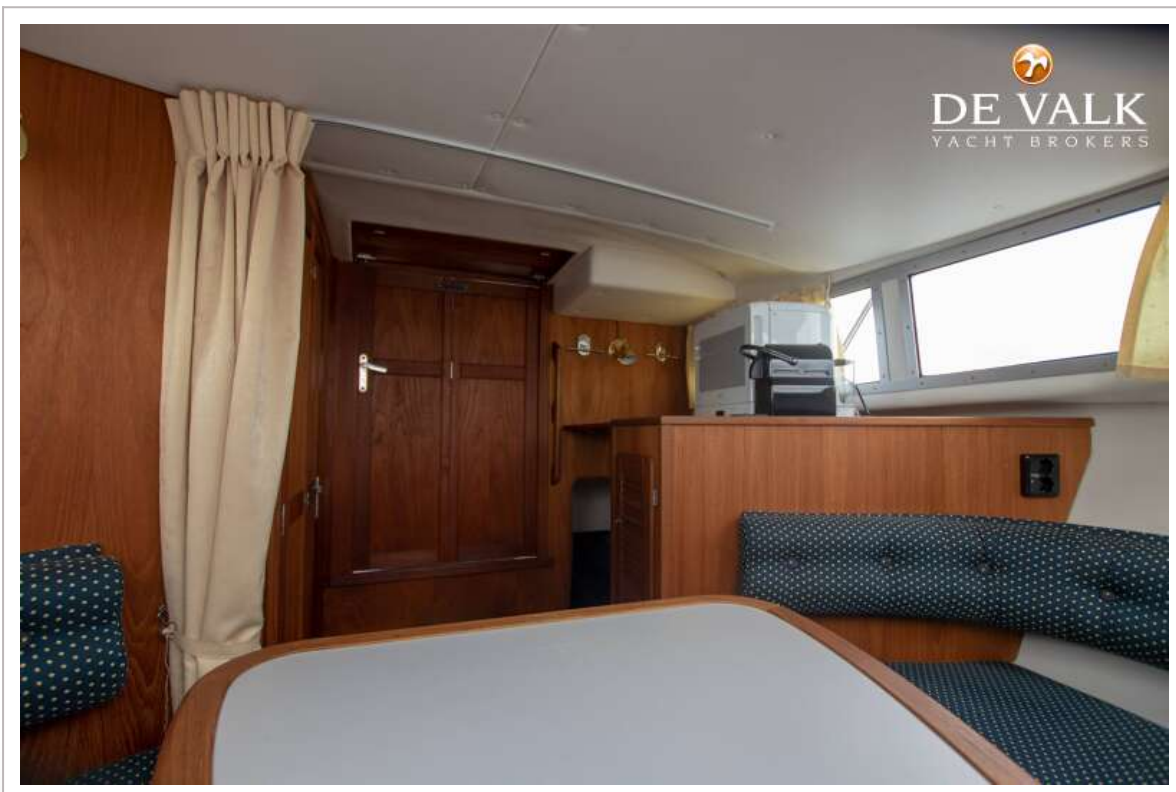
INTER 9000 NOR-LINE

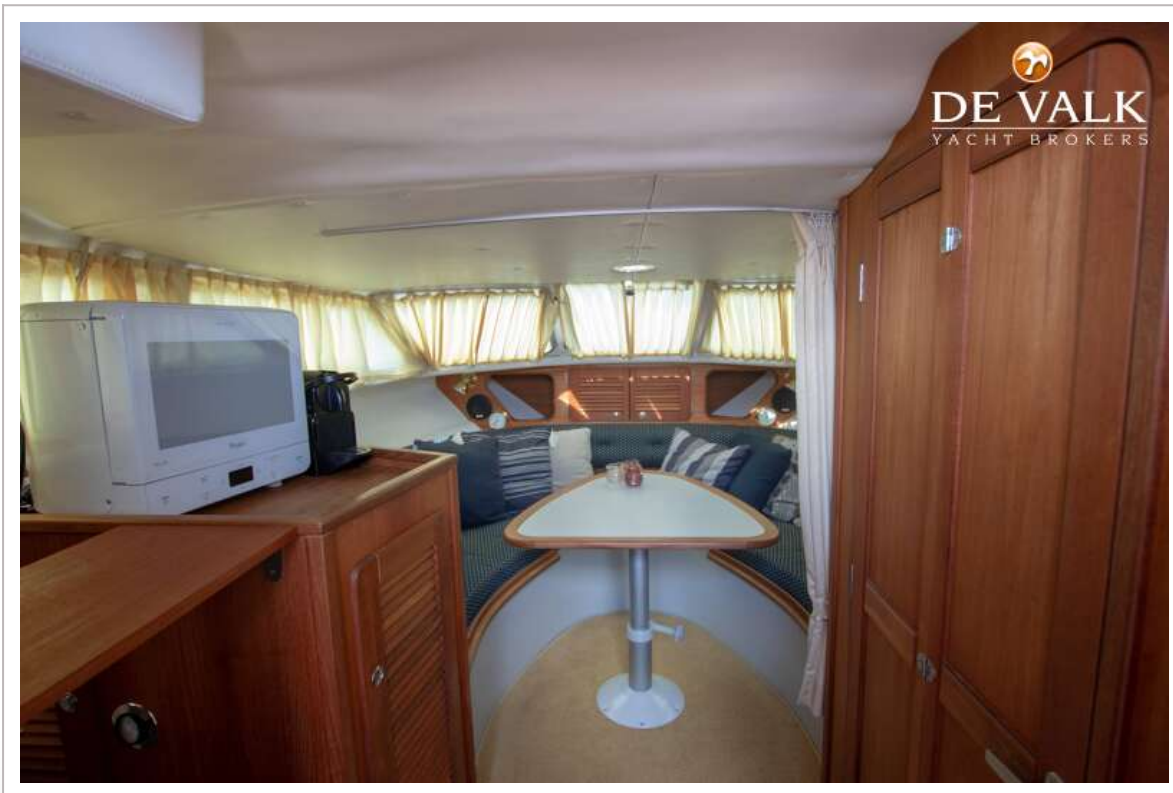


INTER 9000 NOR-LINE

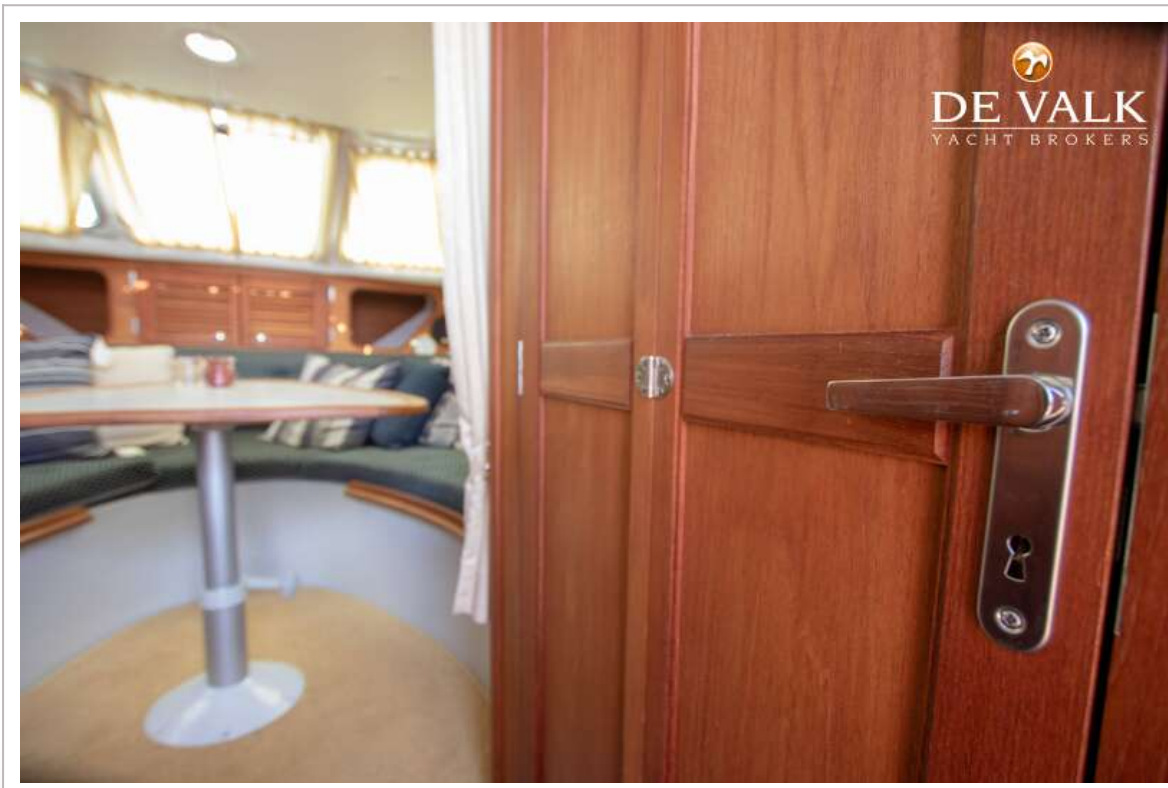


INTER 9000 NOR-LINE





INTER 9000 NOR-LINE





INTER 9000 NOR-LINE

