



DE VALK  
YACHT BROKERS



## TJALK MOTORSHIP 15 M



DE VALK  
YACHT BROKERS

# TJALK MOTORSHIP 15 M

## BROKER'S COMMENTS

This spacious motortjalk features a bright salon with a cabin in the bow and stern, both of which are equipped with a private bathroom for optimal comfort and privacy on board. In 1997 the Tjalk was converted into a motor vessel and given its current shape. This spring the hull was painted both above and below water and the bow thruster was renewed. You are cordially invited to view this Tjalk in our sales marina.

*Bas Lohmann*

## SPECIFICATIONS

<b>Dimensions</b>	14.69 x 3.38 x 0.70 (m)	<b>Builder</b>	
<b>Built</b>	1903	<b>Cabins</b>	2
<b>Material</b>	Steel	<b>Berths</b>	6
<b>Engine(s)</b>	1 x Mercedes 5 cilinder diesel	<b>Hp/Kw</b>	60.00 (hp), 44.16 (kw)
<b>Asking price</b>	sold (VAT )	<b>Lying</b>	contact Loosdrecht

## CONTACT

<b>Sales office</b>	De Valk Loosdrecht	<b>Telephone</b>	+31 35 582 90 30
<b>Address</b>	't Breukeleveense Meentje 6 1231 LM Loosdrecht / Wijdemeren The Netherlands	<b>E-mail</b>	loosdrecht@devalk.nl

## DISCLAIMER

These particulars are given in good faith as supplied but cannot be guaranteed.



# TJALK MOTORSHIP 15 M

## GENERAL

<b>Model</b>	TJALK MOTORSHIP 15 M
<b>Type</b>	motor yacht
<b>LOA (m)</b>	14,69
<b>Beam (m)</b>	3,38
<b>Draft (m)</b>	0,70
<b>Air draft min (m)</b>	2,50
<b>Year built</b>	1903
<b>Hull material</b>	steel
<b>Hull colour</b>	red
<b>Hull shape</b>	flat bottom
<b>Superstructure material</b>	steel
<b>Rubbing strake</b>	steel
<b>Deck material</b>	steel
<b>Deck finish</b>	non-skid paint
<b>Superstructure deck finish</b>	paint
<b>Cockpit deck finish</b>	synthetic teak
<b>Antifouling (year)</b>	2023
<b>Window frame</b>	aluminium
<b>Window material</b>	glass
<b>Flybridge</b>	yes
<b>Flybridge suncover</b>	Telescopic frame
<b>Fuel tank (litre)</b>	stainless steel 500
<b>Level indicator (fuel tank)</b>	yes
<b>Freshwater tank (litre)</b>	stainless steel 400
<b>Level indicator (freshwater)</b>	yes
<b>Blackwater tank (litre)</b>	polyethylene
<b>Level indicator (blackwater)</b>	yes
<b>Wheel steering</b>	hydraulic
<b>Inside helm position</b>	yes
<b>Outside helm position</b>	hydraulic



# TJALK MOTORSHIP 15 M

**More info on paintwork**

Hull done in 2023

**Extra info**

The hull and superstructure are rebuilt in 1997

**Extra info**

yes

## ACCOMMODATION

**Cabins**

2

**Berths**

6

**Interior**

mahogany

**Layout**

yes

**Floor**

carpet

**Aft deck**

yes

**Pilot house/deck saloon**

yes

**Heating**

calogas ducted hot air

**Sliding door to cockpit**

Port side & starboard

**Opening door to cockpit**

yes

**Opening door to aft deck**

yes

**Galley**

yes

**Countertop**

plastic

**Sink**

stainless steel

**Cooker**

calor gas

**Fridge**

2x Dometic 12V + calor Gas

**Freezer**

In fridge

**Hot water system**

geyser on Calor Gas

**Water pressure system**

electrical

**Owners cabin**

double bed + 2 bunk beds

**Wardrobe**

drawers and shelves

**Bathroom**

separate

**Toilet**

separate

**Toilet system**

manual

**Wash basin**

in the bathroom

**Shower**

separate



# TJALK MOTORSHIP 15 M

<b>Guest cabin 1</b>	double bed
<b>Wardrobe</b>	hanging and drawers
<b>Bathroom</b>	en suite
<b>Toilet</b>	en suite
<b>Toilet system</b>	manual
<b>Wash basin</b>	in the cabin
<b>Shower</b>	en suite

## MACHINERY

<b>No of engines</b>	1
<b>Make</b>	Mercedes
<b>Type</b>	5 cilinder
<b>HP</b>	60
<b>kW</b>	44.16
<b>Fuel</b>	diesel
<b>Year of overhaul</b>	1997
<b>Engine cooling system</b>	freshwater heat exchanger
<b>Drive</b>	shaft
<b>Shaft seal</b>	yes
<b>Engine controls</b>	bowden cable
<b>Gearbox</b>	hydraulic
<b>Bowthruster</b>	electric 2023
<b>Gearbox</b>	hydraulic
<b>Exhaust</b>	watercooled
<b>Propeller type</b>	fixed
<b>Propeller blades</b>	4
<b>Propeller shaft material</b>	stainless steel
<b>Shaft lubrication</b>	grease
<b>Electric bilge pump</b>	yes
<b>Electrical installation</b>	12/24V & 230V
<b>Generator</b>	dry exhaust Genemore 5KW



Running hours generator	100
Batteries	yes
Start battery	Sportline AGM 12V/95Ah
Service battery	yes
Battery charger	Batium 12v/18-Ah
Inverter	Portable 150Watt
Shorepower	with cable

## NAVIGATION

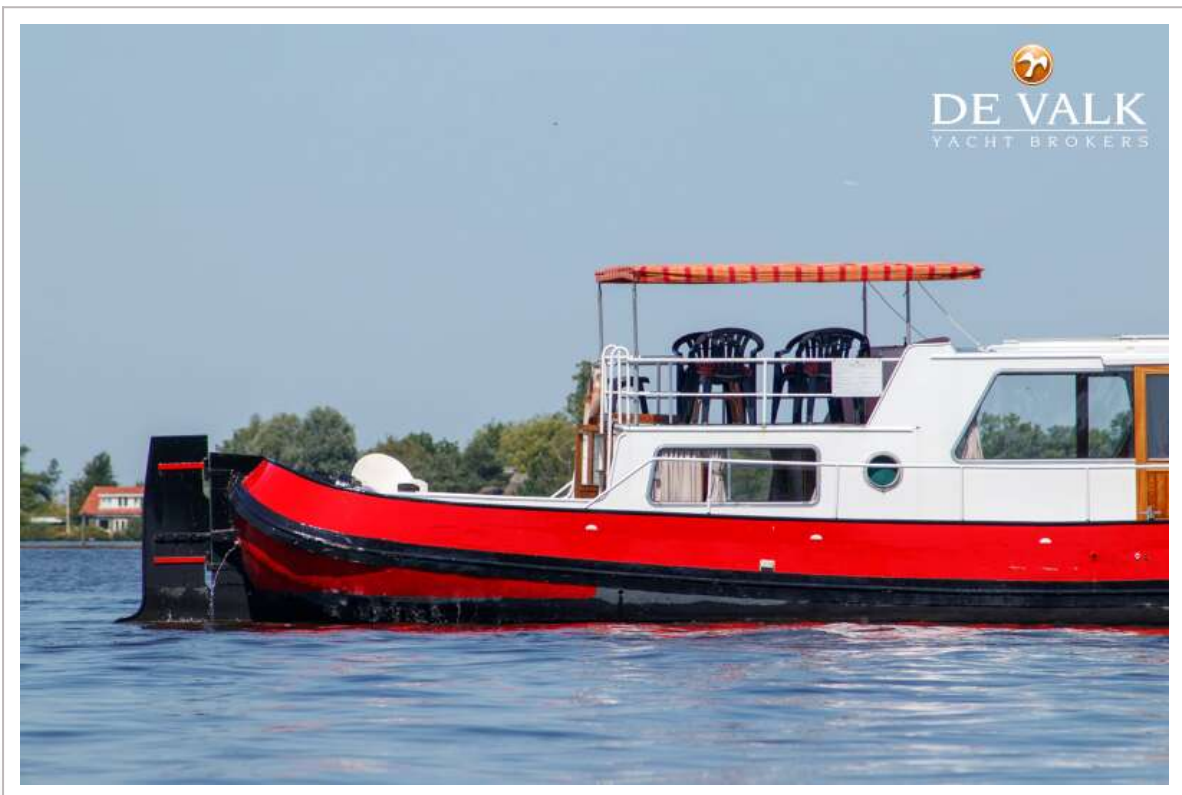
Compass	yes
Navigation lights	yes

## EQUIPMENT

Sun awning	yes
Cockpit cushions	yes
Cockpit table	yes
Cockpit chairs	yes
Anchor	yes
Sea railing	steel
Grab rail (superstructure)	steel
Railing side opening gates	yes
Wiper	Vetus electric
Horn	electric
Fenders	yes
Mooring lines	yes
Radio	yes
Speakers in salon	yes



# TJALK MOTORSHIP 15 M



# TJALK MOTORSHIP 15 M





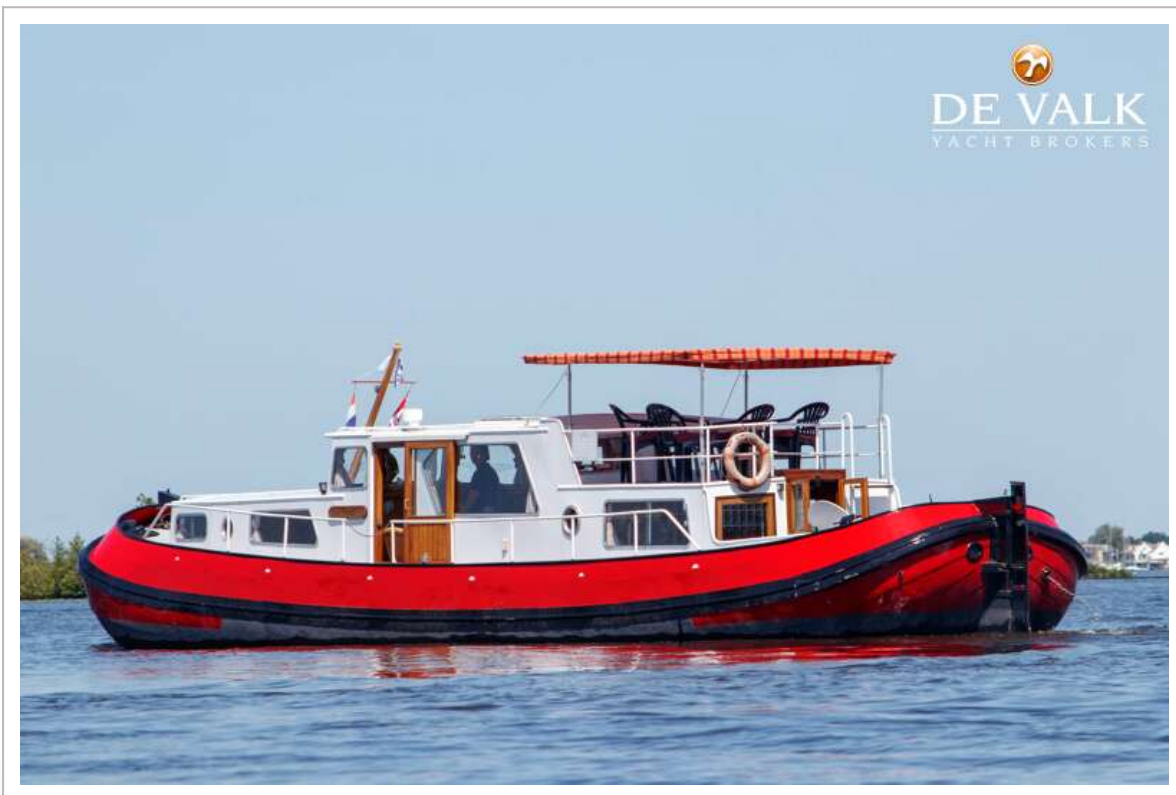
# TJALK MOTORSHIP 15 M



# TJALK MOTORSHIP 15 M



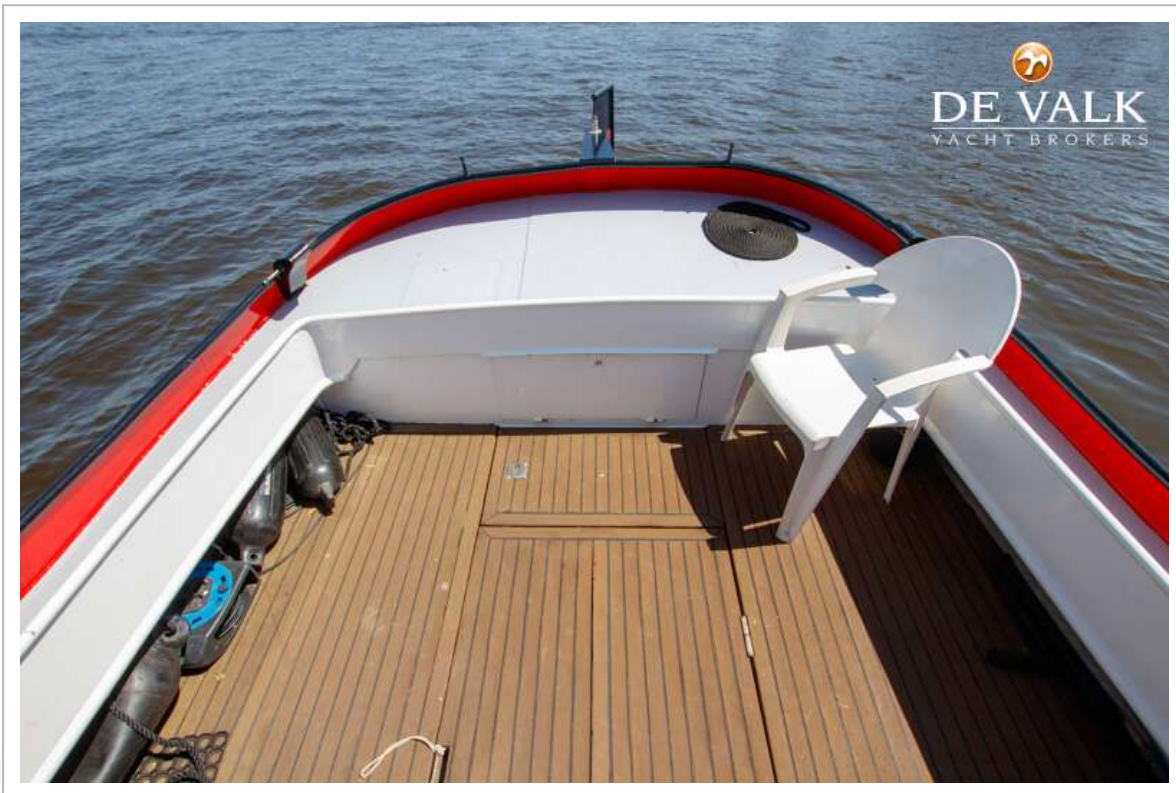
# TJALK MOTORSHIP 15 M



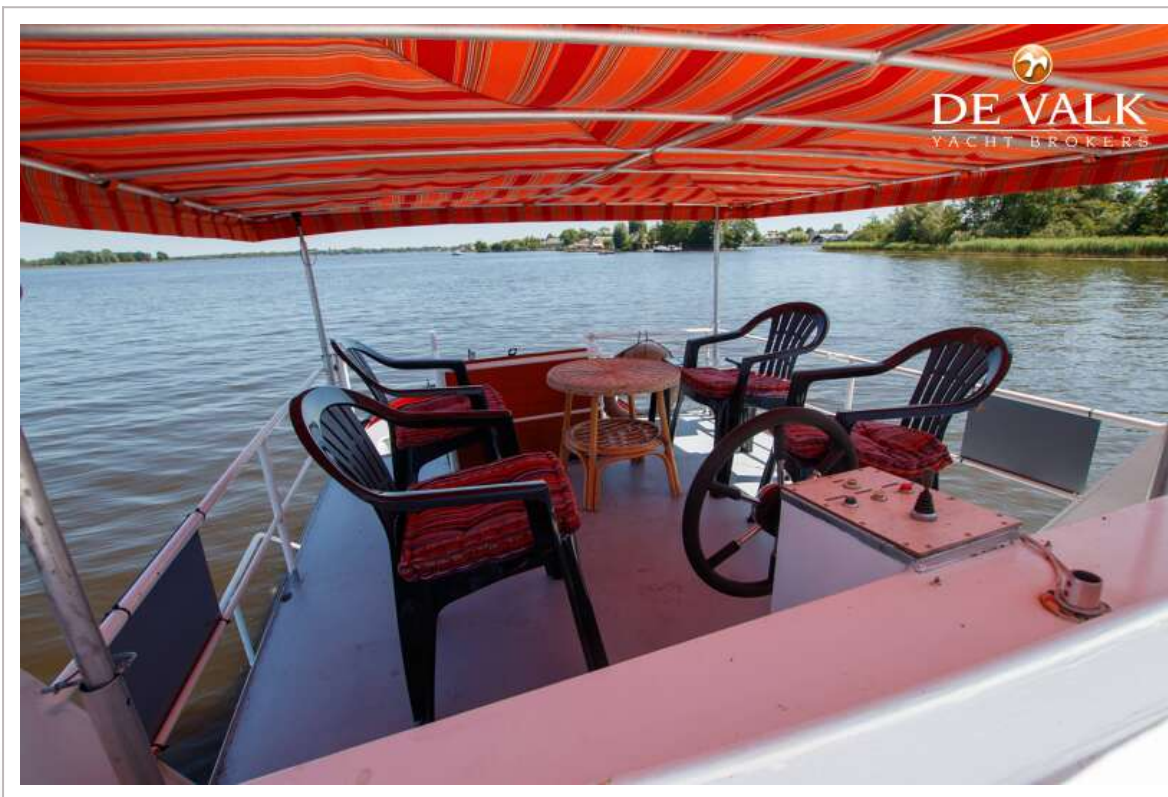
# TJALK MOTORSHIP 15 M



# TJALK MOTORSHIP 15 M



# TJALK MOTORSHIP 15 M



# TJALK MOTORSHIP 15 M

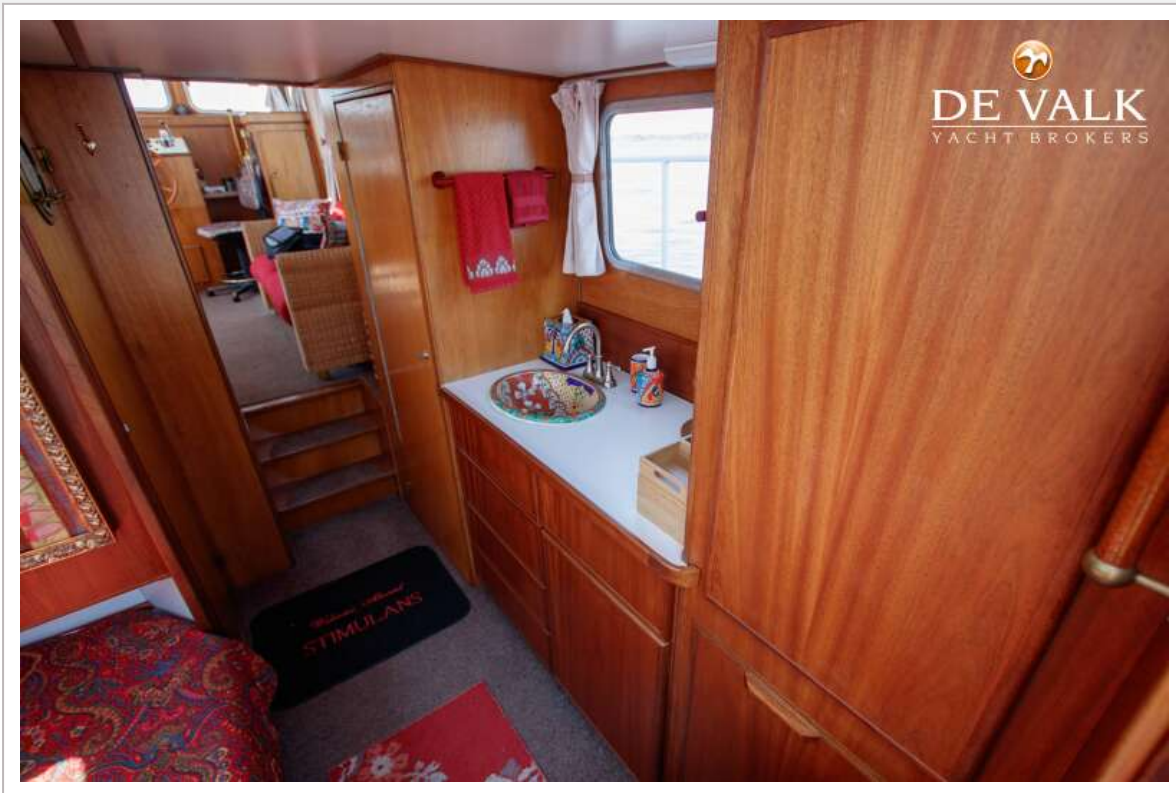


# TJALK MOTORSHIP 15 M

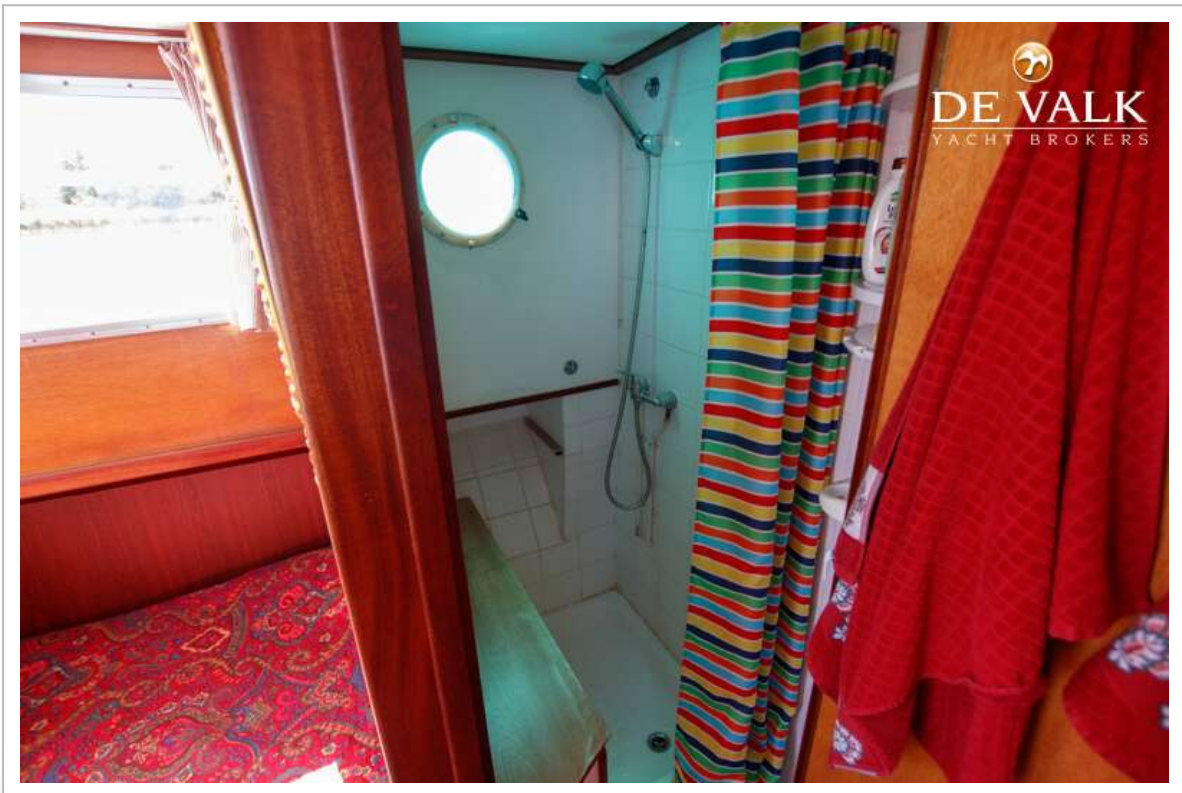
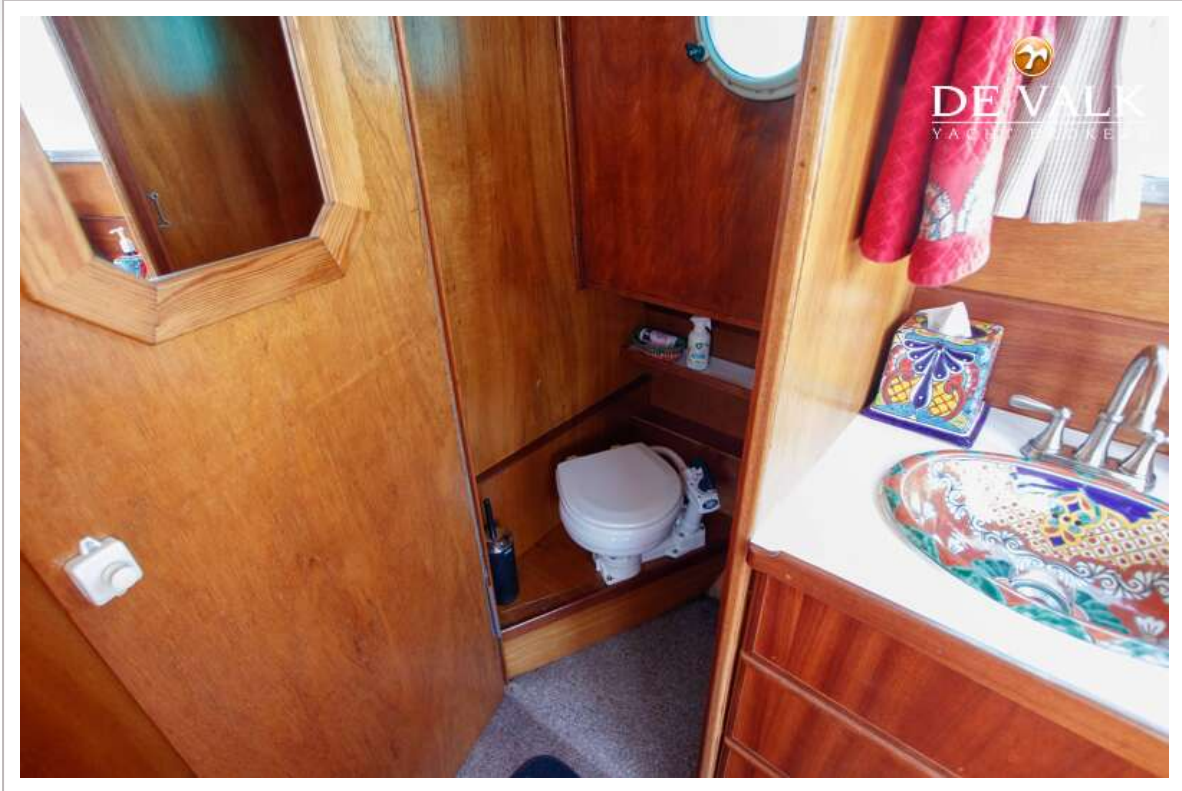




# TJALK MOTORSHIP 15 M



# TJALK MOTORSHIP 15 M



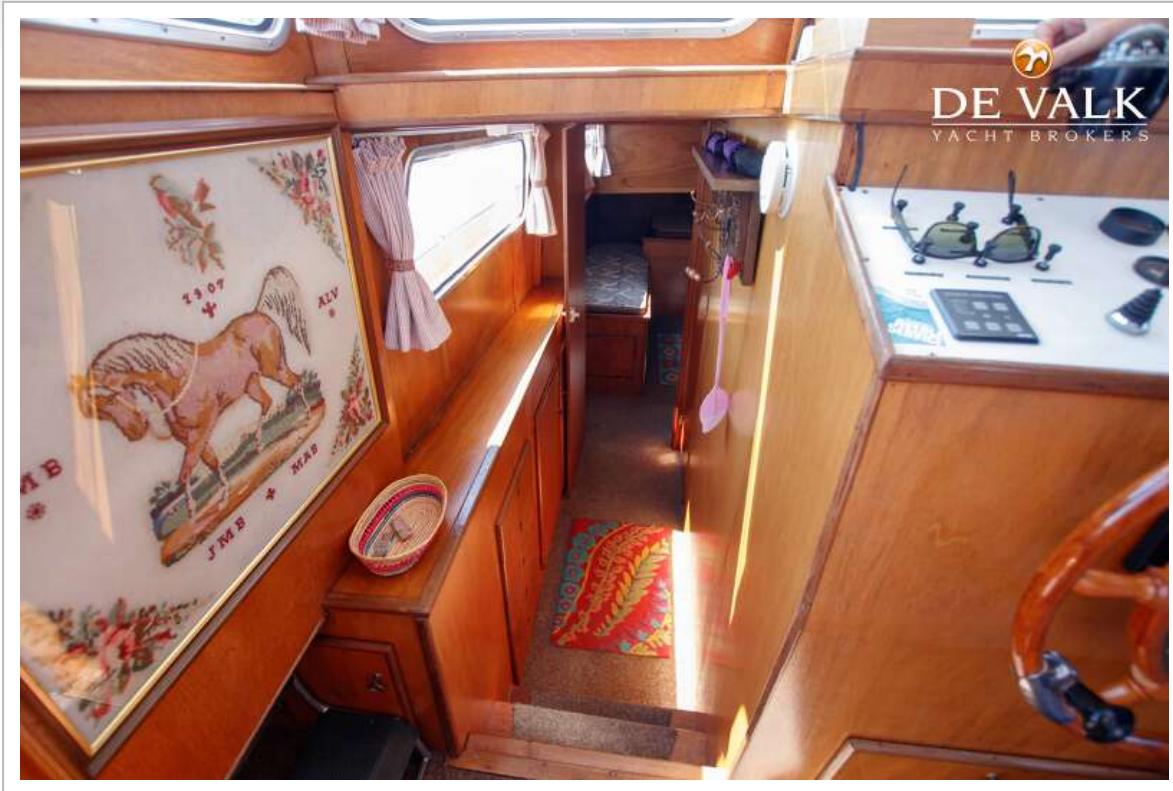
# TJALK MOTORSHIP 15 M



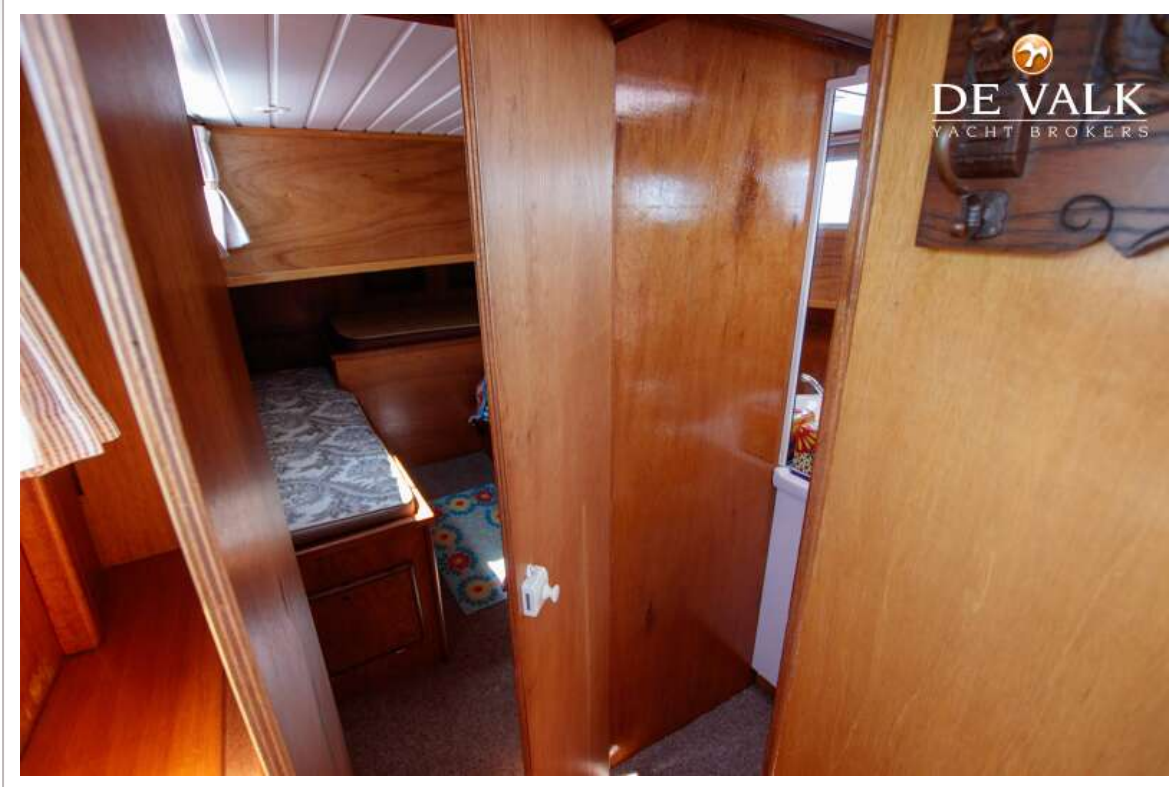
# TJALK MOTORSHIP 15 M



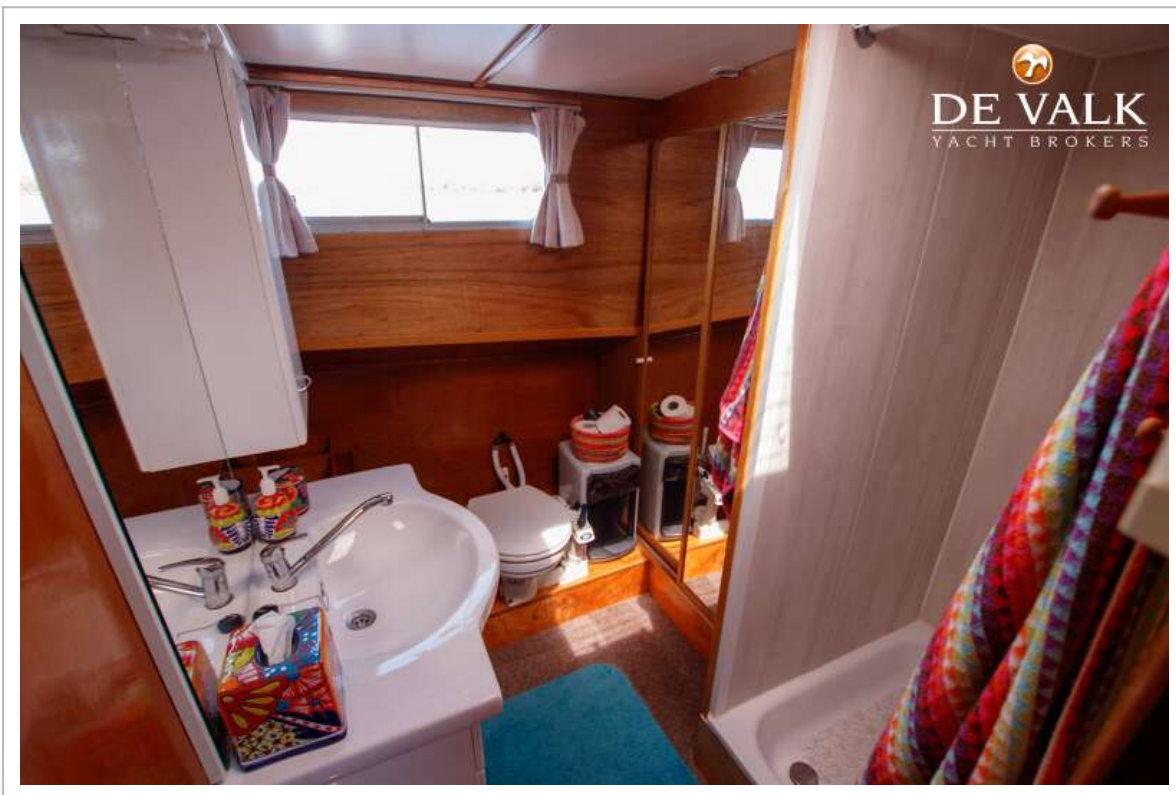
# TJALK MOTORSHIP 15 M



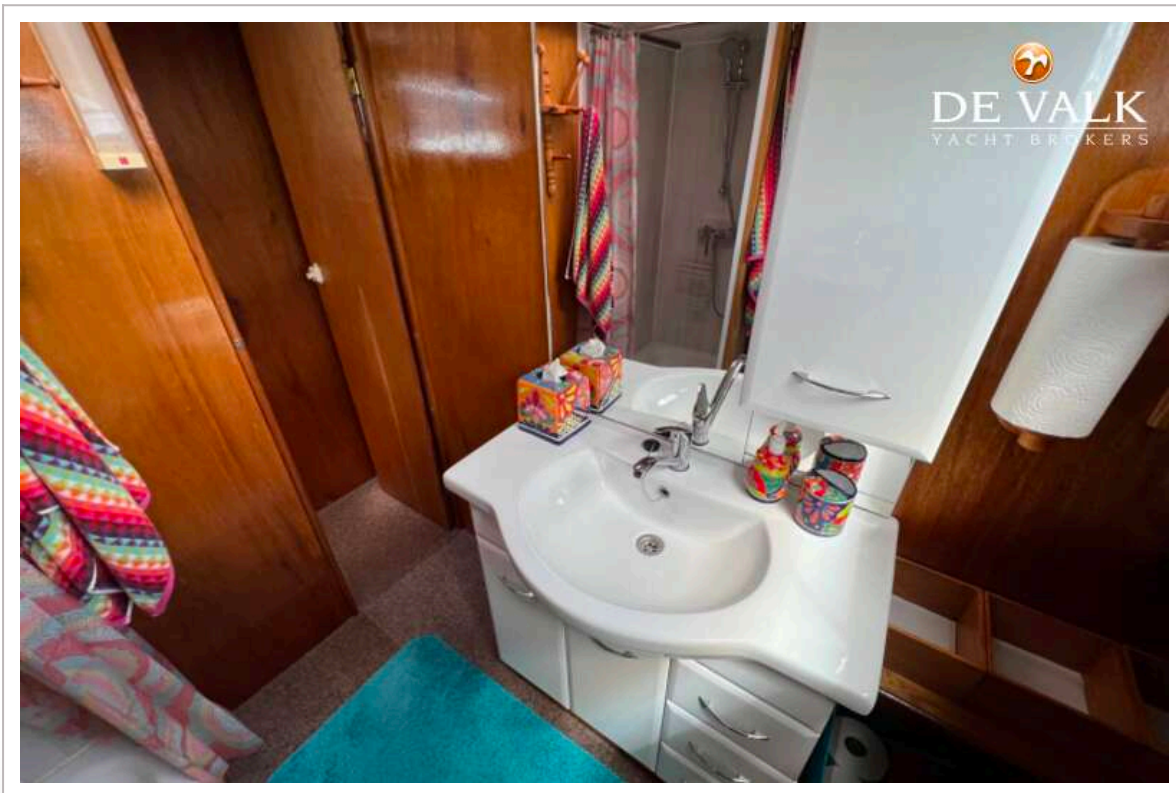
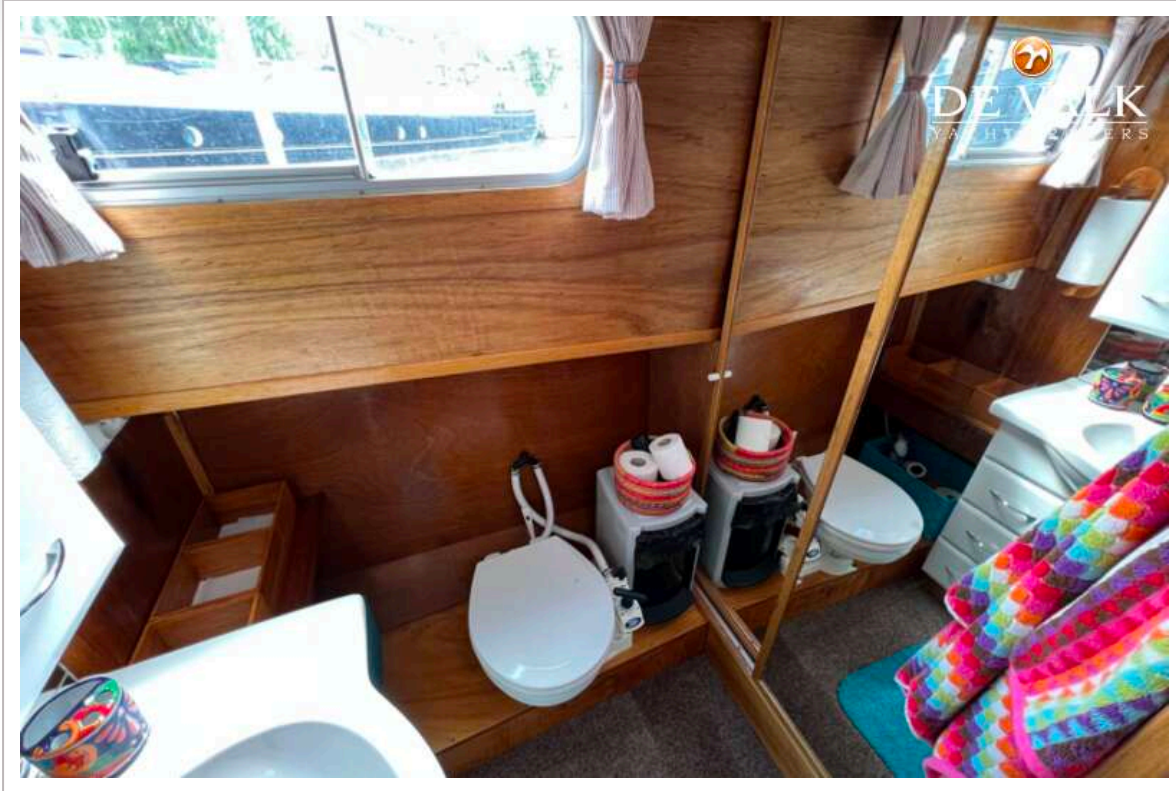
# TJALK MOTORSHIP 15 M



# TJALK MOTORSHIP 15 M

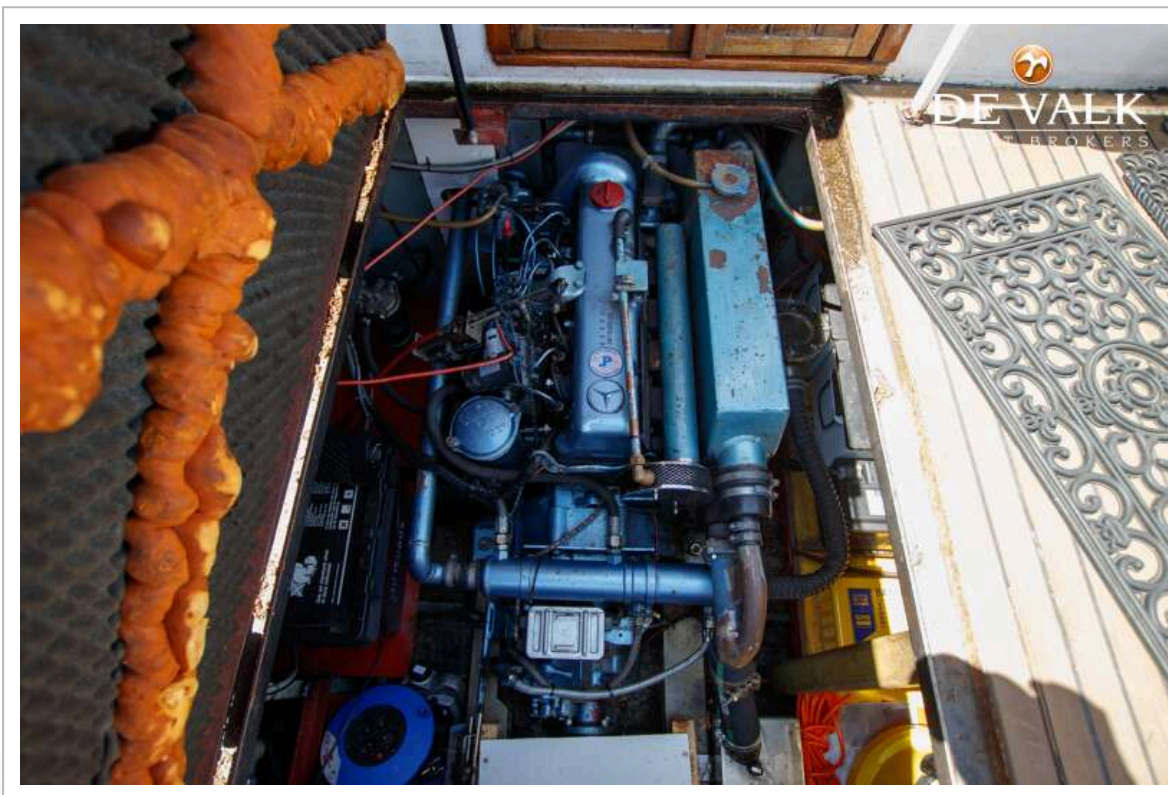


# TJALK MOTORSHIP 15 M





# TJALK MOTORSHIP 15 M



# TJALK MOTORSHIP 15 M

