



DE VALK  
YACHT BROKERS



## NAUTOR SWAN 57 S&S KETCH



DE VALK  
YACHT BROKERS

# NAUTOR SWAN 57 S&S KETCH

## BROKER'S COMMENTS

Classic Swan Sparkman & Stephens Ketch from the legendary Nautor yard in Finland. This Nautor Swan 57 S&S Ketch "TINDORA" was purchased by her current and second owner in 2000. Both owners continually maintained this yacht with a lot of love, care and never cut back on maintenance costs. The teak deck and the engine have been renovated in 2021/2022. The yacht is equipped with newly fitted batteries, a bow truster, a generator, 5 x electric winche, freezer, dingy, outboard engine, life raft, etc. The masts have been refitted and painted in 2011. The hull and topsides have been painted in 2016.

*Jan-Ward van Dantzig*

## SPECIFICATIONS

<b>Dimensions</b>	17.50 x 4.80 x 2.80 (m)	<b>Builder</b>	Nautor Swan
<b>Built</b>	1978	<b>Cabins</b>	4
<b>Material</b>	GRP	<b>Berths</b>	10
<b>Engine(s)</b>	1 x Perkins 4.236 M diesel	<b>Hp/Kw</b>	72 (hp), 52.99 (kw)
<b>Asking price</b>	sold (VAT )	<b>Lying</b>	at sales office

## CONTACT

<b>Sales office</b>	De Valk Sint Annaland	<b>Telephone</b>	+31 166 601 000
<b>Address</b>	Koelhuisweg 4 4697 RM Sint Annaland The Netherlands	<b>E-mail</b>	sintannaland@devalk.nl

## DISCLAIMER

These particulars are given in good faith as supplied but cannot be guaranteed.



# NAUTOR SWAN 57 S&S KETCH

## GENERAL

<b>Model</b>	NAUTOR SWAN 57 S&S KETCH
<b>Type</b>	sailing yacht
<b>LOA (m)</b>	17,50
<b>LWL (m)</b>	13,96
<b>Beam (m)</b>	4,80
<b>Draft (m)</b>	2,80
<b>Air draft (m)</b>	22,50
<b>Headroom (m)</b>	2,05
<b>Year built</b>	1978
<b>Builder</b>	Nautor Swan
<b>Country</b>	Finland
<b>Designer</b>	Sparkman & Stephens
<b>Displacement (t)</b>	21,7
<b>Ballast (tonnes)</b>	lead 9,5
<b>Gross tonnage</b>	30
<b>Net tonnage</b>	9
<b>CE norm</b>	NA
<b>Hull material</b>	GRP
<b>Hull colour</b>	white , with baby blue striping (all painted in 2016)
<b>Hull shape</b>	deep-V
<b>Keel type</b>	fin keel Remounted after hull was reinforced (approx.40 mm thick) in 2016
<b>Superstructure material</b>	GRP
<b>Deck material</b>	GRP
<b>Deck finish</b>	teak (1992 - 18 mm) still at least 10 mm thick (recaulked april 2022)
<b>Superstructure deck finish</b>	teak (1992 - 18 mm) still at least 12 mm thick (recaulked april 2022)
<b>Cockpit deck finish</b>	teak (1992 - 18 mm) still at least 10 mm thick (recaulked april 2022)
<b>Antifouling (year)</b>	2022



# NAUTOR SWAN 57 S&S KETCH

<b>Dorades</b>	7 x Stainless steel
<b>Window frame</b>	aluminium
<b>Window material</b>	polycarbonate In superstructure replaced in 2016
<b>Deckhatch</b>	Goiot (with new polycarbonate windows - 2022)
<b>Insulation</b>	Balsa
<b>Fuel tank (litre)</b>	stainless steel 900 litre (3 x 300 litre) - cleaned & remounted in 2016
<b>Level indicator (fuel tank)</b>	Gauge stick
<b>Fuel daytank (litre)</b>	stainless steel 1 x 300 litre - cleaned & remounted in 2016
<b>Freshwater tank (litre)</b>	stainless steel 800 litre (in 4 tanks) - 1 tank cleaned & remounted in 2016
<b>Wheel steering</b>	rack & pinion And chain
<b>Emergency tiller</b>	yes
<b>More info on hull</b>	Osmosis treatment in 2000
<b>Extra info</b>	Rudder sealing and rudder bearing renewed in 2015
<b>Extra info</b>	2 x Prism in front deck (for extra light in bow)
<b>Extra info</b>	Extra double Separ fuel filter on the engine

## ACCOMMODATION

<b>Cabins</b>	4
<b>Berths</b>	10
<b>Interior</b>	teak With white leather upholstery
<b>Floor</b>	teak and holly
<b>Saloon</b>	Port side saloon sofa (1,80 m) equipped with a Lee Cloth
<b>Headroom saloon (m)</b>	2,05 m
<b>Heating</b>	diesel ducted hot air Eberspacher
<b>Chart table</b>	On starboard side (headroom: 1,97 m)
<b>Dinette</b>	yes
<b>Galley</b>	On port side on (headroom: 1,97 m)
<b>Countertop</b>	corian White (renewed in 2002)
<b>Sink</b>	stainless steel 2 x
<b>Cooker</b>	calor gas 4 burner Force 10 (renewed in 2016)



# NAUTOR SWAN 57 S&S KETCH

Oven	Force 10 (renewed in 2016)
Gas alarm	yes
Fridge	220V (2016) watercooled + 24V (2012) compressor (fridge+freezer)
Freezer	220V (2016) watercooled + 24V (2012) compressor (freezer+fridge)
Hot water system	220V + engine Approx. 60 litre
Water pressure system	electrical
Manual and/or foot pump	Salt water pump
Owners cabin	double bed + single bed In aft cabin (headroom: 1,87 m)
Bed length (m)	1 x 2,00 x 1,10 m & 1 x 2,00 x 0,80 m with slatted base
Wardrobe	hanging/drawers/shelves
Bathroom	en suite I (headroom: 1,72 m)
Toilet	en suite
Toilet system	manual Jabsco (new toilet seat 2022)
Wash basin	in the bathroom Stainless steel
Shower	en suite
Guest cabin 1	double bed In the bow (headroom: 1,90 m)
Bed length (m)	2,00 x 1,80 m
Wardrobe	hanging and shelves
Bathroom	shared II (headroom: 1,90 m)
Toilet	shared
Toilet system	manual Jabsco
Wash basin	in the bathroom Stainless steel
Shower	shared
Guest cabin 2	bunk bed On port side in the bow (headroom: 2,03 m)
Bed length (m)	1 x 2,00 x 0,60 m & 1 x 2,00 x 0,70 m (with lee cloths)
Wardrobe	hanging and shelves
Guest cabin 3	bunk bed On starboard side in the bow (headroom: 2,03 m)
Bed length (m)	1 x 2,00 x 0,70 m & 1 x 2,00 x 0,70 m (with lee cloths)
Wardrobe	hanging and shelves
Washing machine	Candy (3,5 KG) Aqua 100F, Class AA Aquamatic (2015)



# NAUTOR SWAN 57 S&S KETCH

Extra info	LED lighting and several 24 Volt ventilators in the interior
Extra info	Neptune mattresses in all cabins. LED interior lights

## MACHINERY

No of engines	1
Make	Perkins
Type	4.236 M
HP	72
kW	52.99
Fuel	diesel
Year installed	1978
Year of overhaul	2022: fuel pump & injectors overhauled. New exhaust pipe
Maximum speed (kn)	8
Cruising speed (kn)	7
Consumption (l/hr)	6,5
Engine hours	5700
Engine cooling system	freshwater heat exchanger Completely renewed in 2016 with new coolant (2022)
Drive	shaft
Engine controls	bowden cable
Gearbox	mechanical Water cooled (complete renewed in 2022) with Dynamic part (2015)
Bowthruster	electric Maxpower 18 Hp (renewed in 2016) with 2 x propeller
Propeller type	folding Maxprop
Propeller blades	3
Propeller shaft material	stainless steel Propeller shaft renewed in 2015 & shaft bearings renewed in 2021
Shaft lubrication	water Propeller shaft seal renewed in 2021
Manual bilge pump	2 x
Electric bilge pump	2 x
Electrical installation	24 Volt & 220 Volt
Generator	wet exhaust Yanmar (complete electric part renewed in 2016)



# NAUTOR SWAN 57 S&S KETCH

<b>Running hours generator</b>	1500
<b>Start battery</b>	2 x (renewed in 2021)
<b>Service battery</b>	6 x 115 Ah AGM (renewed in May 2022)
<b>Generator battery</b>	1 x (renewed in 2021)
<b>Bowthruster battery</b>	2 x Optima Red Top (renewed in 2020)
<b>Battery monitor</b>	Mastervolt Mass Inverter Charger Control (2016)
<b>Battery charger</b>	Mastervolt (2016). Old battery charger as spare available
<b>Inverter</b>	Mastervolt (2016)
<b>Diode battery combiners</b>	yes
<b>Shorepower</b>	with cable
<b>Extra info</b>	Engine mounts, injectors & fuel pump renewed in 2011
<b>Extra info</b>	Water pump on engine (new in 2022), start engine (new in 2016)
<b>Extra info</b>	To be sure of the engine, no expense was spared on maintenance !

## NAVIGATION

<b>Compass</b>	Plastimo Olympic 135 (on the pedestal)
<b>Depth sounder</b>	B & G
<b>Log</b>	B & G
<b>Windset</b>	B & G
<b>Repeater</b>	B & G Hydra 330 (at the chart table)
<b>VHF</b>	Sailor RT144AB
<b>Autopilot</b>	Simrad Robertson AP20 (with second display at chart table)
<b>Rudder angle indicator</b>	Via autopilot
<b>Plotter/GPS</b>	Simrad CP42 (with many not fully up-to-date electronic charts)
<b>Radar/GPS/plotter</b>	Garmin GPS MAP 4010 Radar Transmitter (2022)
<b>Navtex</b>	Furuno Navtex NX-300
<b>PC connection</b>	yes
<b>Electronic chart(s)</b>	There aren't electronic charts present for Garmin GPS MAP 4010
<b>AIS transceiver</b>	(2016) - show on Garmin GPS MAP 4010
<b>Navigation lights</b>	LED lights in mast (2011). Glass stern navigationlight is broken



# NAUTOR SWAN 57 S&S KETCH

Extra info

Spreader lights in main mast & mizzen mast.

Extra info

New panel at chart table & all wires renewed (2015/2016)

## EQUIPMENT

Sprayhood with grab rail

Grey (2013)

Cockpit cover

Grey, can be zipped onto the sprayhood (2013)

Sun awning

yes

Winter cover

For over the complete yacht (in 3 parts)

Cockpit cushions

5 x dark blue cushion & 4 x dark blue Comfort Seat

Cockpit table

Must be provided with new teak veneer

Boarding ladder

stainless steel Removable

Deck shower

yes

Anchor

Delta

Anchor chain

50 meter

Anchor 2

yes

Anchor chain

Chain and rope

Windlass

Maxwell Nilsson (up-down foot switches on bow)

Capstan

yes

Dinghy

Joker (with removable floor)

Outboard

1 x 8 HP (serviced in 2022)

Outboard support

1 x on push pit

Sea railing

stainless steel Double wired

Railing side opening gates

On both sides - stainless steel

Pushpit

Stainless steel

Pulpit

Stainless steel

Life raft (pers)

valise (or bag) 6 persons Plastimo Pacific

Last life raft survey

Surveyed until April 2023

Lifejackets

Orange

Safety lines on deck

Stainless steel wire

Radar reflector

yes

Fenders

yes





# NAUTOR SWAN 57 S&S KETCH

<b>Mooring lines</b>	yes
<b>Spare parts</b>	yes
<b>Radio-cd player</b>	Pioneer WMA with MP3 connection
<b>Sub-woofer</b>	yes
<b>Speakers in salon</b>	Boston Caliber
<b>Clock - barometer</b>	Schatz
<b>Fire extinguisher</b>	5 x (need to be surveyed / replaced)
<b>Extra info</b>	2 x folding stainless steel maststep on the mizzen mast
<b>Extra info</b>	Extra winches : 2 x Maxwell 20ST (mainsheet traveler)
<b>Extra info</b>	3x Maxwell 20ST (mizzen sheet, mizzen + mizzen staysail halyard)

## RIGGING

<b>Rigging</b>	ketch
<b>Standing rigging</b>	Dyform And Rod Rigging fore stay (all renewed in 2011)
<b>Brand mast</b>	Nautor
<b>Material mast</b>	aluminium coated White painted by Hall in 2011
<b>Spreaders</b>	Main mast : 2 x 2 & mizzen : 1 x 2
<b>Mainsail</b>	SPARE : Lion Sails : Dacron fully battened (2004 - adequate)
<b>Mainsail cover</b>	Grey (2013)
<b>Fully battened mainsail</b>	Quantum : Kevlar (2013 - moderate to adequate)
<b>Main staysail</b>	North Sails : Dacron
<b>Mizzen</b>	Quantum : Kevlar (2013-good) & Lion Sails : Dacron (2004-good)
<b>Mizzen sailcover</b>	Grey (2013)
<b>Mizzen staysail</b>	North Sails : Dacron (good)
<b>Jib</b>	Quantum : Kevlar with hangs (2013 - adequate)
<b>Jib I</b>	SPARE : Lion Sails : Dacron Jib (2004 - adequate)
<b>Genoa</b>	Quantum Kevlar with a grey UV protection strip (2013 - adequate)
<b>Genoa I</b>	SPARE : Lion Sails : Dacron Genoa (2004 - adequate)
<b>Genoa furler</b>	Reckmann
<b>Spinnaker</b>	Doyle Sails : spinnaker with a snuffer (2013 - good)



# NAUTOR SWAN 57 S&S KETCH

<b>Yankee</b>	North Sails : Dacron (good)
<b>Trysail</b>	Not available, but there is a rail on the mast
<b>Reefing System</b>	slabreefing Mainsail: 3x reef & mizzen: 1 reef (both 2 rope reefing system)
<b>Backstay adjuster</b>	hydraulic 2 x
<b>Boomvang</b>	hydraulic Navtec
<b>Primary sheet winch</b>	1 x Lewmar 48 ST (electric - main sheet)
<b>Secondary sheet winch</b>	2 x Lewmar 44 ST (manual - Jib sheet / back stays)
<b>Genoa sheetwinches</b>	2 x Barient 36 ST (electric)
<b>Halyard winches</b>	1 x Lewmar 48 ST (electric) and 2 x Lewmar 44 ST (manual)
<b>Reefing winch</b>	1x Lewmar 48 ST (electric genoa) and 1 x Lewmar 48 ST (manual)
<b>Multifunctional winches</b>	1 x Lewmar 43 ST and 1 x Lewmar 48 ST (both manual)
<b>Spi-pole</b>	carbon Hall (white painted) renewed in 2011
<b>Isolated backstay</b>	(renewed in 2011)
<b>Extra info</b>	Rigging refit by Hall in 2011 (painted, electric wires, discs)
<b>Extra info</b>	Aluminium Selden stay tentioner protection tubes (2011)



# NAUTOR SWAN 57 S&S KETCH



# NAUTOR SWAN 57 S&S KETCH



# NAUTOR SWAN 57 S&S KETCH



# NAUTOR SWAN 57 S&S KETCH



# NAUTOR SWAN 57 S&S KETCH



# NAUTOR SWAN 57 S&S KETCH





# NAUTOR SWAN 57 S&S KETCH



# NAUTOR SWAN 57 S&S KETCH



# NAUTOR SWAN 57 S&S KETCH



# NAUTOR SWAN 57 S&S KETCH



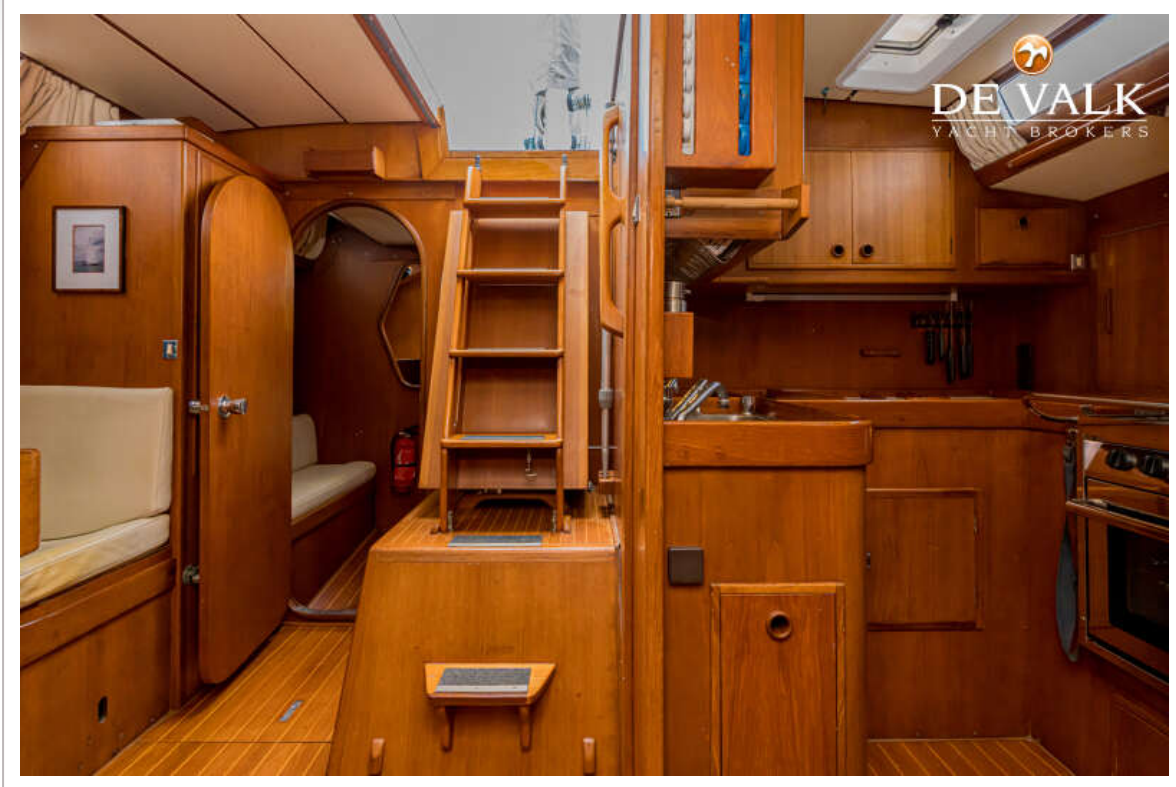
# NAUTOR SWAN 57 S&S KETCH



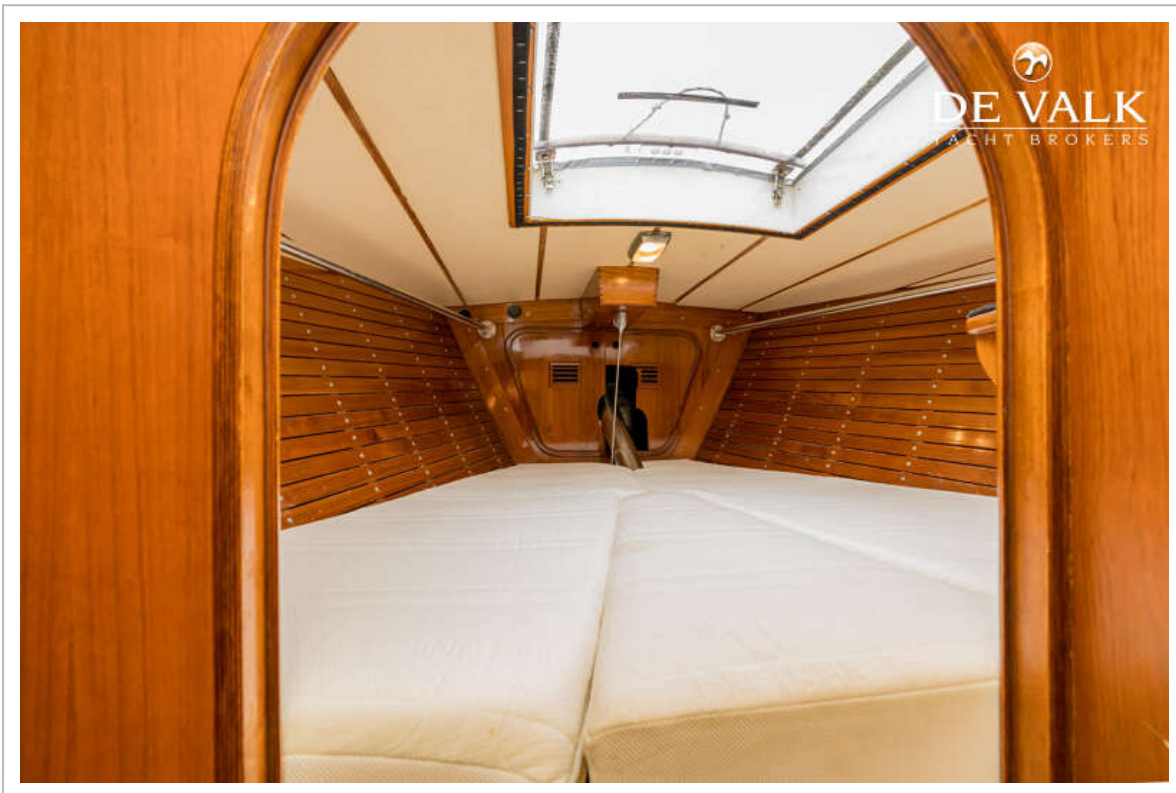
# NAUTOR SWAN 57 S&S KETCH



# NAUTOR SWAN 57 S&S KETCH

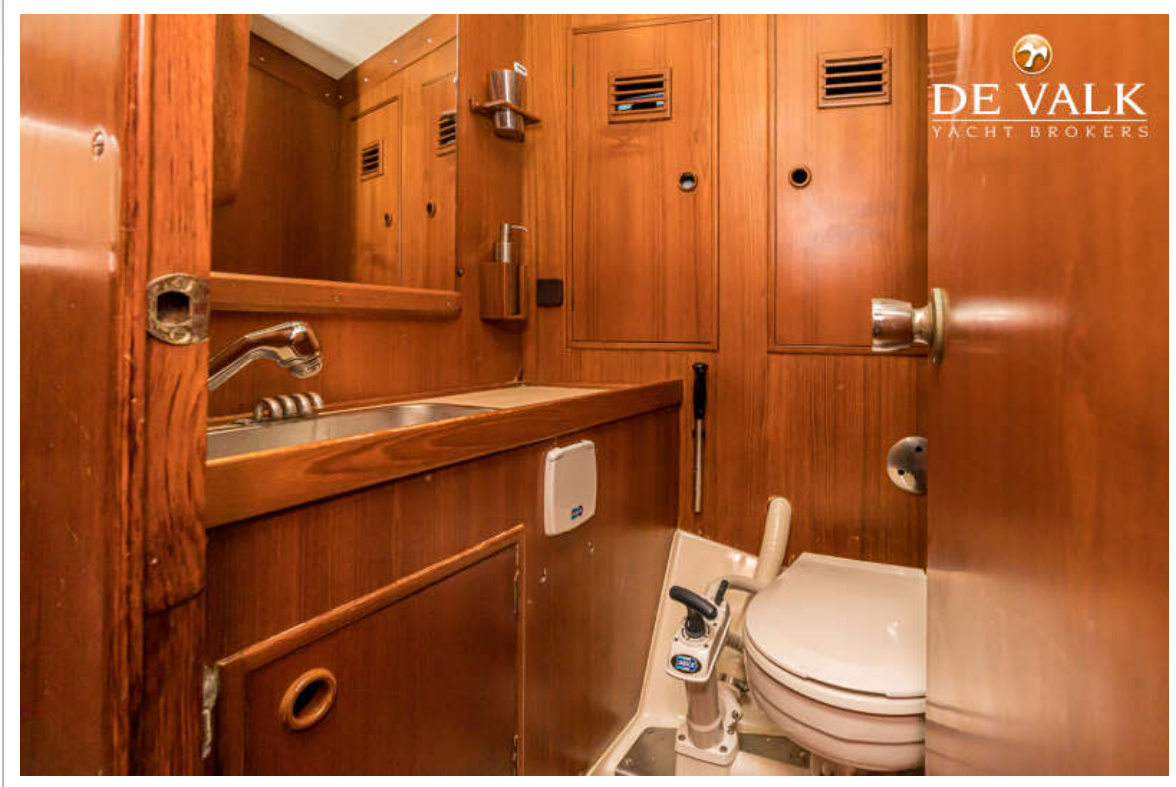


# NAUTOR SWAN 57 S&S KETCH





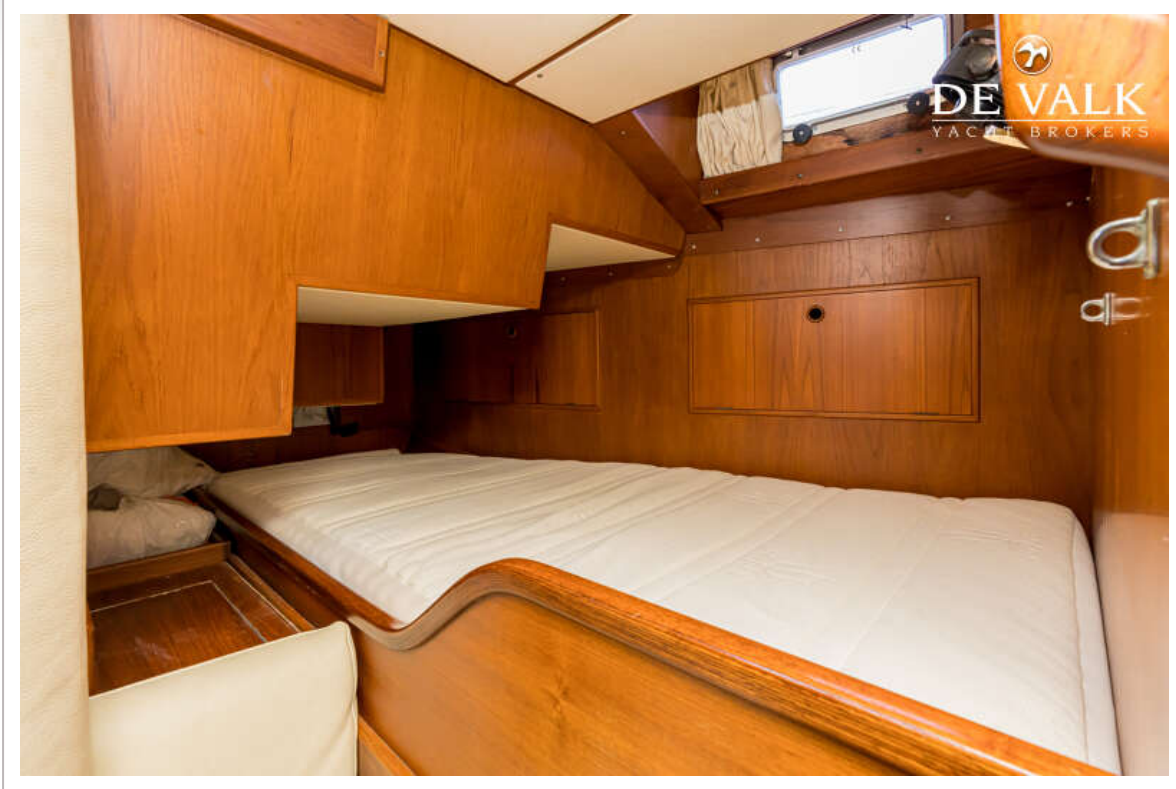
# NAUTOR SWAN 57 S&S KETCH



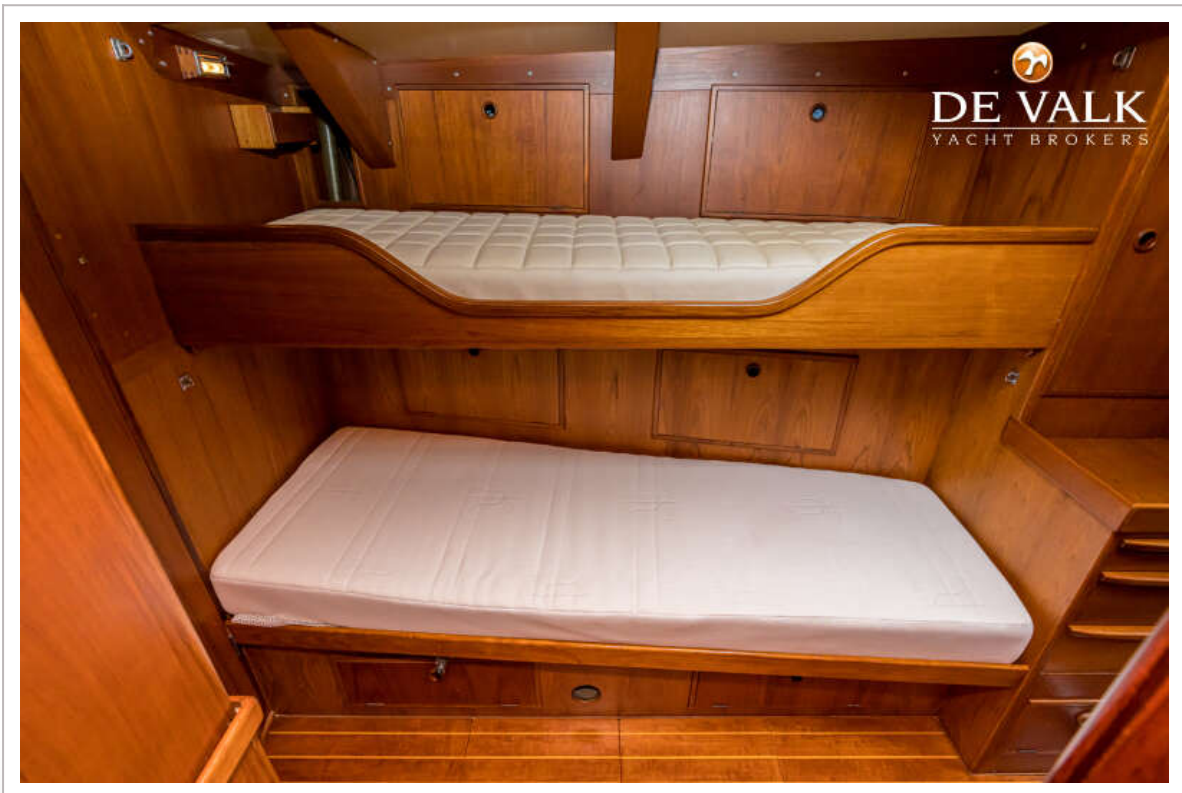
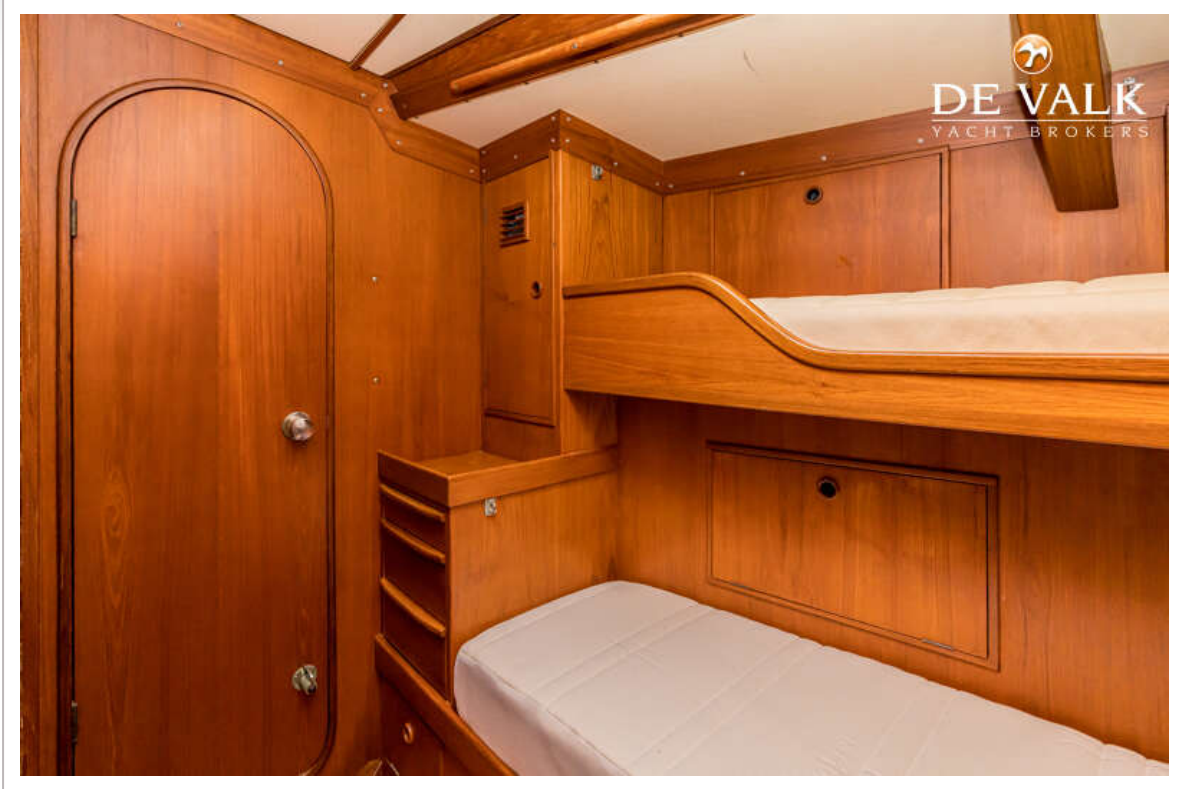
# NAUTOR SWAN 57 S&S KETCH



# NAUTOR SWAN 57 S&S KETCH



# NAUTOR SWAN 57 S&S KETCH



# NAUTOR SWAN 57 S&S KETCH



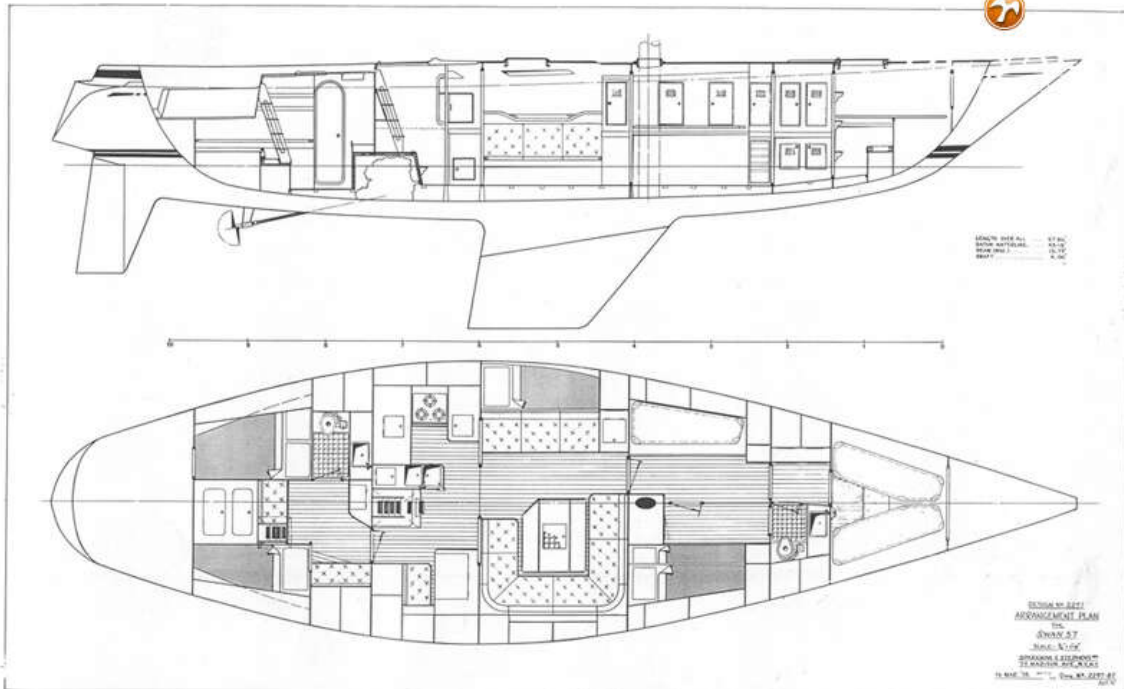
TINDORA : UPGRADES ALGEMEEN	TINDORA : GENERAL UPGRADES	TINDORA : ALLGEMEINE UPGRADES
<b>2000</b> Osmosebehandeling, gelcoat en 4 mm polyester weggeslepen. 12 maanden uitgedroogd op de wal. Polyester opnieuw opgebouwd met	Osmosis treatment, gelcoat and 4 mm polyester removed. Dehydrated on shore for 12 months. Polyester rebuilt with epoxy	Osmosebehandlung, Gelcoat und 4 mm Polyester entfernt. 12 Monate an Land dehydriert. Polyester mit Epoxyidurbaue
<b>2001</b> Boegschroef (MaxPower) geïnstalleerd Teak dek gerubberd Perspex luiken vervangen	Bow thruster (MaxPower) installed Teak deck recaulked Perspex in deck hatches replaced	Bugstrahlruder (MaxPower) installiert Teakdeck neu gummiert Perspex der Decksluken erneuert
<b>2002</b> Kiel eraf voor controle van de keelbouten Romp en opbouw schilderwerk (blauw - De IJssel) Verstaging vernieuwd (rod rigging)	Keel disassembled for checking the keel bolts Hull and superstructure painted (blue - De IJssel) Standing rigging renewed (rod rigging)	Kiel demontiert zur Überprüfung der Keelbolzen Rumpf- und Aufbauackierung (Blau - De IJssel) Stehendes Gut erneuert (Rod-Rigging)
<b>2004</b> Nieuwe set zeilen van Lion Sails Simrad kaartplotter geïnstalleerd	New sails from Lion Sails Simrad Chartplotter installed	Segelset Lion Sails Simrad Kartplotter installiert
<b>2011</b> Mast refit door Hall Spars. Rod verstaging vervangen voor draad (voorstag wel Rod). Vernieuwd: elektrische bedrading, verlichtingarmaturen LED, schijven, verstaging en spanners, lopend want en radarreflector. Masten gestraald, gegrond en gespoten met	Mast refit by Hall Spars. Rod Rigging replaced by wire (only forestay in Rod). Renewed: electrical wiring, LED lighting fixtures, discs, stays and tensioners, running rigging and radar reflector. Masts blasted, primed and sprayed with Awlgrip	Mastüberholung durch Hall Spars. Gestängestreben gegen Draht (Vorstag oder Gestänge) austauschen. Erneuert: elektrische Verkabelung, LED-Beleuchtungskörper, Scheiben, Stagen und Spanner, laufendes Gut und Radarreflektor. Masten gestrahlt,
<b>2013</b> Garmin Radar vernieuwd Nieuwe set zeilen van Quantum Sails Spinnaker Doyle Sprayhood en luiken vernieuwd	Garmin Radar renewed New sails from Quantum Sails Spinnaker Doyle Sprayhood and covers renewed	Garmin Radar erneuert Segelset Quantum Sails Spinnaker Doyle Neue Sprayhood und Persenningen
<b>2014</b> Neptune matrassen (achterkajuit met lattenbodem) en lederen kussens in de salon Dubbel bed in de voorpunt gemaakt Loodskooi (bakboord in de salon) vervangen door kasten Candy wasmachine	Neptune mattresses (aft cabin with slatted base) and leather cushions in salon Double bed in the front cabin made Seaberth (portside in salon) replaced by cabinets Candy washing machine	Neptune Matratzen (Achterkabine mit Lattenrost) und Lederkissen im Salon Doppelbett im vorderen Kabine gemacht Schlafplatz im Salon am Bakbord Seite ersetzt worden mit Schrank Candy Waschmaschine
<b>2015</b> Roerlagers en roerconing afdichting vernieuwd	Rudder bearings and rudder shaft sealing renewed	Ruderlagerung und Abdichtung des Ruderwelles erneuert
<b>2016</b> Elektrisch systeem refit. Vernieuwd: schakelpaneel, bedrading, inverter, acculader en elektrisch systeem van Yanmar generator, dekschakelaars ankerlier	Refit electrical system. Renewed: switch panel, wiring, inverter, battery charger and electrical system of Yanmar generator, deck switches anchor winch	Überholung der elektrischen Anlage. Erneuert: Schalttafel, Verkabelung, Wechselrichter, Batterieladegerät und elektrisches System des Yanmar-Generators, Deckschalter Ankerwinde
Kielsectie romp vernieuwd, dikte 40 mm (Van der Rest Nautic, Kats) Hull en opbouw schilderwerk (De IJssel, wit en baby blue)	Keel section hull renewed, thickness 40 mm (VD Rest Nautic, Kats) Hull and superstructure painted (white and baby blue - De IJssel)	Kielabschnitt Rumpf erneuert, Dicke 40 mm (VD Rest Nautic, Kats) Rumpf- und Aufbauackierung (weiss und Baby Blue - De IJssel)
Tanks gereinigd Boegschroef (Maxpower) vernieuwd AIS geïnstalleerd Force 10 kooktoestel met oven vernieuwd Boiler vernieuwd Bliegpompen en waterpomp vernieuwd Plastimo kompas	Tanks cleaned Bow thruster (Maxpower) renewed AIS installed Force 10 stove with oven renewed Hot water boiler renewed Bliegpompen en waterpomp vernieuwd Pasting compass	Tanks gereinigt Bugstrahlruder (Maxpower) erneuert AIS installiert Force 10 Herd mit Backofen erneuert Kessel erneuert Bliegpumpen und Wasserpumpe erneuert Plastimo Kompass
<b>2020</b> Accu's boegschroef (2 x Optima Red Top) Accu's Perkins en Yanmar (3 x)	Bow thruster batteries (2 x Optima Red Top) Batteries Perkins and Yanmar (3 x)	Batterien für Bugstrahlruder (2 x Optima Red Top) Batterien Perkins und Yanmar (3 x)
<b>2022</b> LED in originele armaturen Teakdek gerubberd, schroeven eruit, afgevuuld met epoxy en plugjes. Het originele teakdek is vernieuwd in 1992 (dikte 18 mm) en heeft nu aan de voorzijde van het schip een dikte van 10 mm en op andere plaatsen 12 mm AGM Accu's service (6 x 115 Ah) Radar zender (Garmin) vernieuwd Perspex luiken vervangen	LED-lights in original fixtures Teak deck recaulked, screws removed, filled with epoxy and plugs. The original teak deck was renewed in 1992 (thickness 18 mm) and now has a thickness of 10 mm at the front of the ship and 12 mm on other places AGM Batteries Domestic (6 x 115 Ah) Radar transmitter (Garmin) renewed Perspex in deck hatches replaced	LED-Lampen in Originalfassungen Teakdeck neu gummiert, Schrauben entfernt, mit Epoxy und Stopfen gefüllt. Das ursprüngliche Teakdeck wurde im Jahr 1992 erneuert (Dicke 18 mm) und hat jetzt eine Dicke von 10 mm am Vordersende des Schiffes und 12 mm an anderen Stellen AGM Batterien Service (6 x 115 Ah) Radarsender (Garmin) erneuert Perspex der Decksluken erneuert



# NAUTOR SWAN 57 S&S KETCH



TINDORA : PERKINS 4236M		TINDORA : PERKINS 4236M		TINDORA : PERKINS 4236M	
2011	Vernieuwd: fuelpomp, motorsteunen	Renewed: fuel pump, engine support		Erneuert: Kraftstoffpumpe, Motorsstütze	
2016	Vernieuwd: startmotor, warmtewisselaar, dynamische koppeling, schroefas, extra fuelfilter	Renewed: starter motor, heat exchanger, dynamic gearbox, propeller shaft, extra fuel filter		Erneuert: Anlasser, Wärmetauscher, dynamische Kupplung, Propellorwelle, zusätzlicher Kraftstofffilter	
2021	Vernieuwd: lagerschroefas	Renewed: propeller shaft bearings		Erneuert: Propellorwellenlager	
2022	Vernieuwd: schakelbak, waterpomp, uitlaatstuk, filters, impellor, V-snaren, koelvloeistof	Renewed: gearbox, water pump, exhaust pipe, filters, impellor, V-belts, coolant		Erneuert: Getriebe, Wasserpumpe, Auspuffrohr, Filter, Impeller, Keilriemen, Kühlmittel	
	Service: injectors, kleppen stellen (gedaan), fuelpomp (wordt nog door werf uitgevoerd)	Service: injectors, adjusting valves (done), fuel pump (will be done by shipyard)		Service: Einspritzdüsen, Ventile einstellen (erledigt), Kraftstoffpumpe (wird durch Werft durchgeführt)	
TINDORA : ONDERHOUD TE VOORZIEN		TINDORA : MAINTENANCE TO BE PROVIDED		TINDORA : WARTUNG MUSS VORGESEHEN WERDEN	
2023	Antifouling, winterbeurt Perkins en Yanmar, vernieuwe keerkoppeling olie	Antifouling, winter service Perkins and Yanmar and renewing oil gearbox		Antifouling, Winterwartung Perkins + Yanmar und erneuen vom Getriebe Öl	
	Repareren of vernieuwen snelheidsmeter (werkt niet)	Repair or renew speedometer (not working)		Log reparieren oder erneuern (funktioniert nicht)	
2024	Verstaging check, preventief vervangen Rod voorstag	Standing Rig check, preventively replace Rod forestay		Stehendes Gut prüfen, Rod-Vorstag vorsorglich ersetzen	
	Vervangen kit dekdoorvoeren bij verstaging en schilderen mastvoet als masten eraf	Replacing deck transit kit at rigging and painting mast foot (when masts are off)		Ersetzen des Deck-Transit-Kits am Rigging und Lackieren des Mastfußes (wenn die Masten abgenommen sind)	
	Service motoren van lieren (koolbortstels en koperdraad)	Service winch engines (carbon brushes and copper wire)		Wartung am Windenmotoren (Kohlebürsten und Kupferdraht)	
	Reinigen en smeren lieren en ankerlier	Cleaning and lubricating winches and anchor winch		Winden und Ankerwinde reinigen und schmieren	
2024/26	Vernieuwen zeilen (niet bezaan). Met Quantum en Lions set kan nog een aantal seizoenen gevaren worden	Renew sails (not mizzen). With the Quantum and Lions set can be sailed a few more seasons		Segel erneuern (nicht Besan). Mit Quantum und Lions Set kann noch ein paar Saisons gesegelt werden	



# NAUTOR SWAN 57 S&S KETCH

