



GRAND BANKS 50

GRAND BANKS 50

BROKER'S COMMENTS

Built in 1975, this Grand Banks 50 is an impressive wooden motor yacht. She is a very comfortable and reliable vessel- laying in A Coruña, waiting to go cruising again. With two shaft motors (315HP each), she has a large master cabin aft, two bunk cabins and a crew cabin forward. In the upper part it has a large deck solar and a flybridge. You are very welcome to visit her in A Coruña.

Alfonso Fernández Vidal

SPECIFICATIONS

Dimensions	15.35 x 4.88 x 1.33 (m)	Builder	
Built	1975	Cabins	4
Material	Wood	Berths	8
Engine(s)	2 x YANMAR 6LPA-STP2 diesel	Hp/Kw	2 x 315.00 (hp), 231.84 (kw)
Asking price	€ 150.000 (VAT Exempt)	Lying	Spain

CONTACT

Sales office	De Valk A Coruña	Telephone	+34 881 800 469
Address	MARINA CORUÑA VARADERO - Dársena Deportiva Faro de Oza s/n 15006 A Coruña Spain	E-mail	acoruna@devalk.nl

DISCLAIMER

These particulars are given in good faith as supplied but cannot be guaranteed.



GENERAL

Model	GRAND BANKS 50
Type	motor yacht
LOA (m)	15,35
Beam (m)	4,88
Draft (m)	1,33
Year built	1975
CE norm	NA
Hull material	wood
Hull colour	white
Superstructure material	wood epoxy
Deck material	teak
Window frame	wood
Flybridge	yes
Radar arch	yes
Level indicator (fuel tank)	yes
Level indicator (freshwater)	yes
Inside helm position	yes
Flybridge helm position	yes

ACCOMMODATION

Cabins	4
Berths	8
Crew cabin	yes
Crew berths	2
Floor	woodprint
Aft deck	yes
Headroom saloon (m)	1.95
Navigation center	yes
Aft Cabin	yes
Dinette	yes



GRAND BANKS 50

Opening door to cockpit	yes
Opening door to aft deck	yes
Sink	stainless steel Double
Cooker	induction
Extractor	yes
Fridge	yes
Freezer	yes
Dishwasher	yes
Owners cabin	double bed
Bed length (m)	2 X 1.5
Wardrobe	yes
Bathroom	yes
Toilet system	electric
Bath tub	yes
Guest cabin 1	bunk bed
Wardrobe	yes
Toilet system	electric
Shower	yes
Guest cabin 2	bunk bed
Wardrobe	yes
Bathroom	yes
Toilet system	electric
Washing machine	yes
Dryer	yes

MACHINERY

No of engines	2
Make	YANMAR
Type	6LPA-STP2
HP	315
kW	231.84



Fuel	diesel
Year installed	2008
Drive	shaft

NAVIGATION

Compass	yes
Compass on flybridge	yes
Depth sounder	yes
VHF	yes
Plotter/GPS	yes
Radar/GPS	yes
EPIRB	yes
Navigation lights	yes

EQUIPMENT

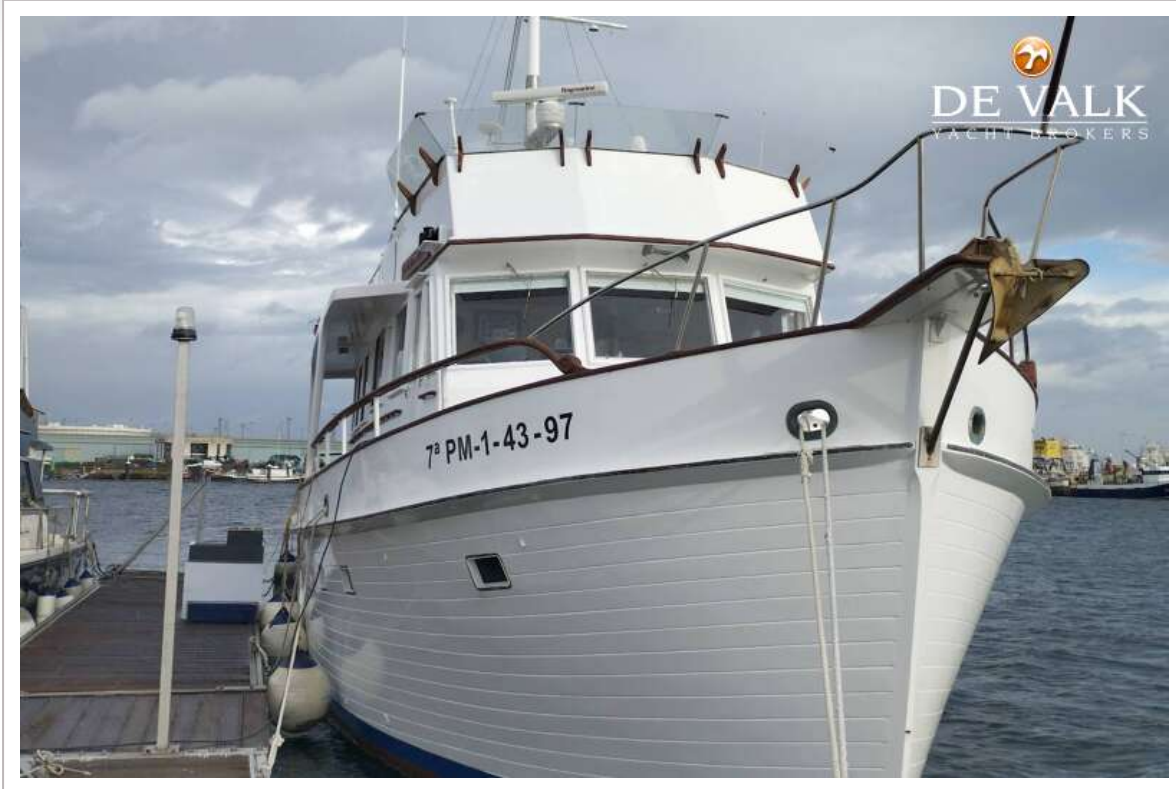
Anchor	CQR Plough
Anchor chain	yes
Windlass	yes
Deck crane	yes
Life raft	container
Fenders	yes
Mooring lines	yes
TV	yes
Fire extinguisher	yes



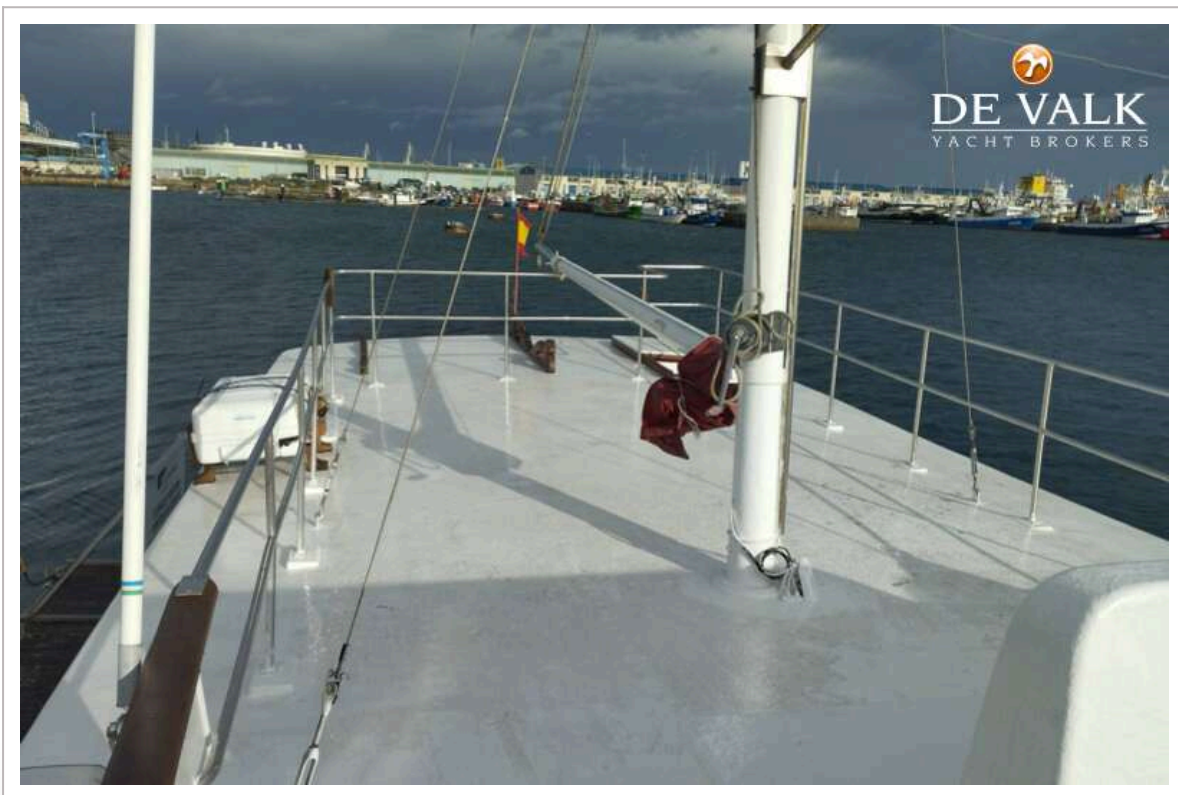
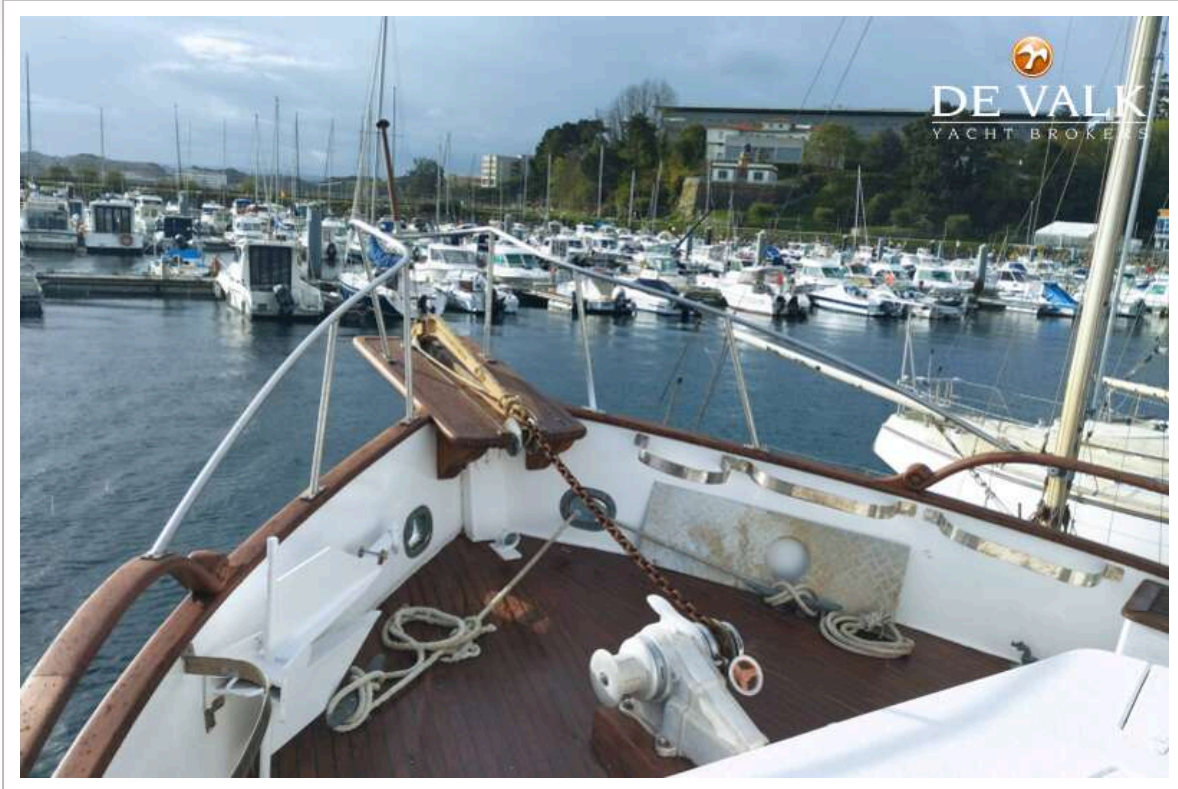
GRAND BANKS 50



GRAND BANKS 50



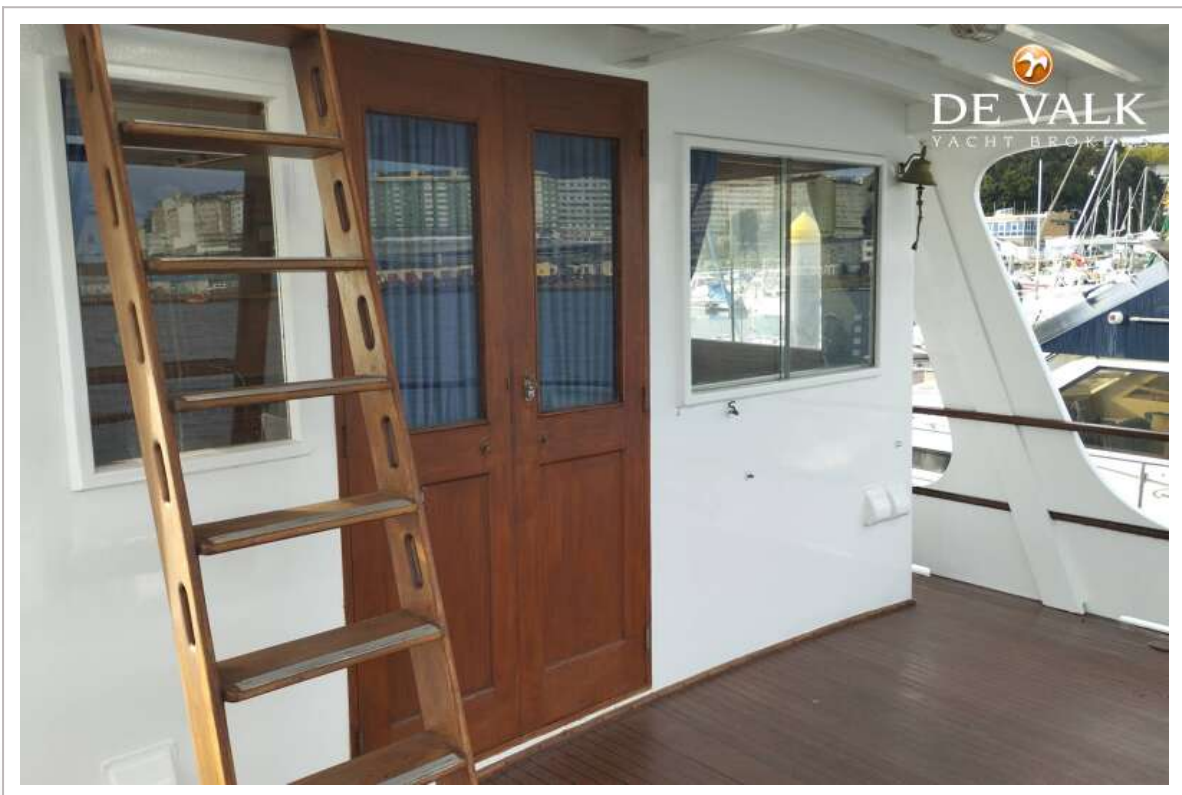
GRAND BANKS 50



GRAND BANKS 50



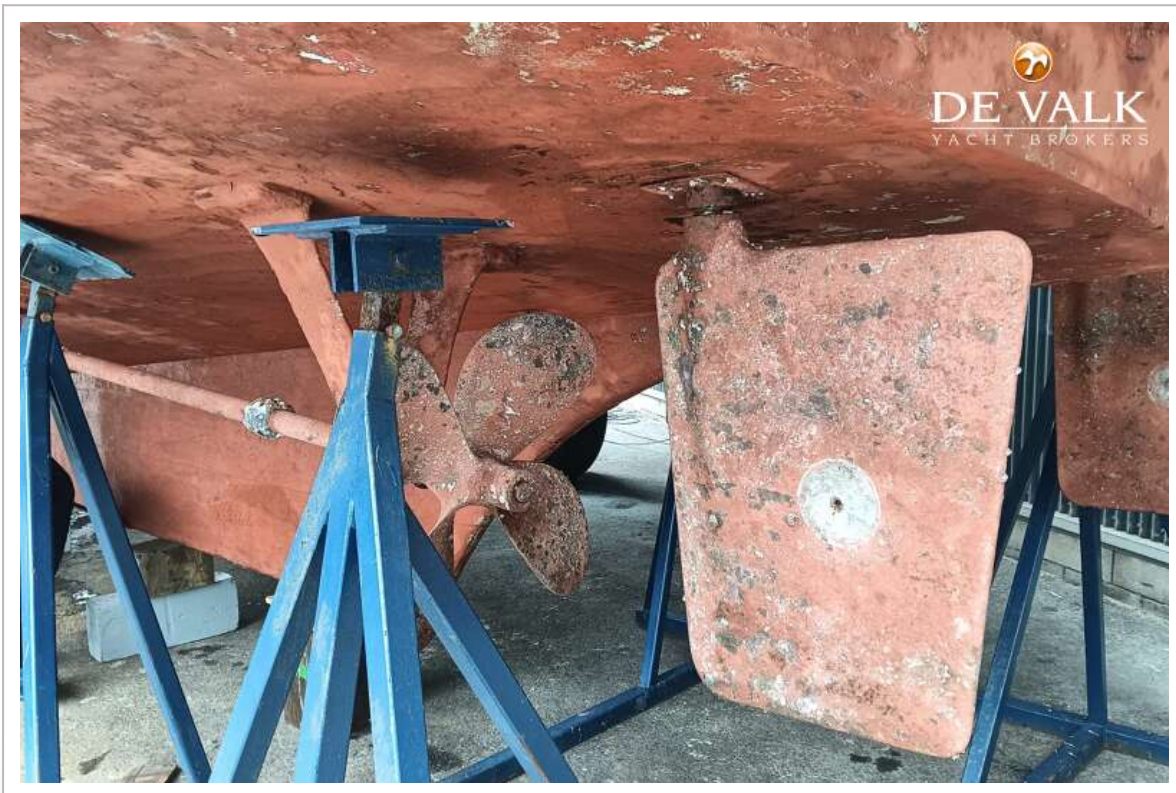
GRAND BANKS 50

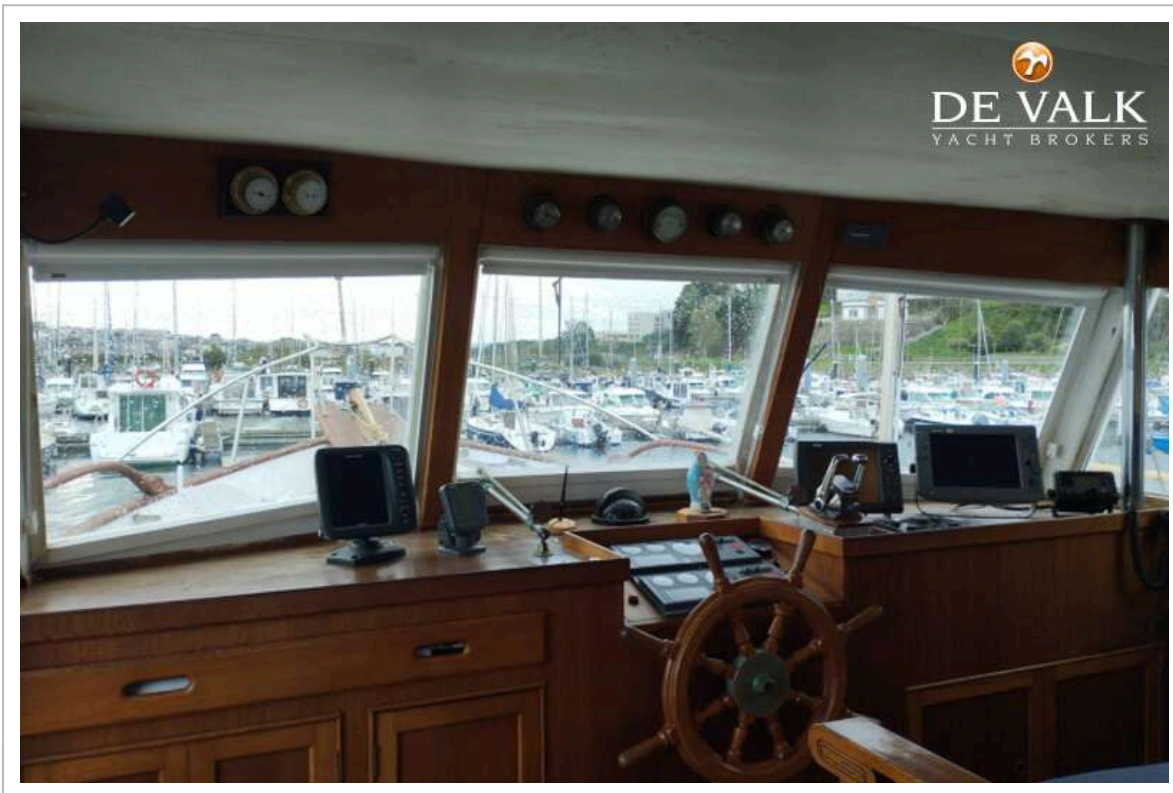


GRAND BANKS 50

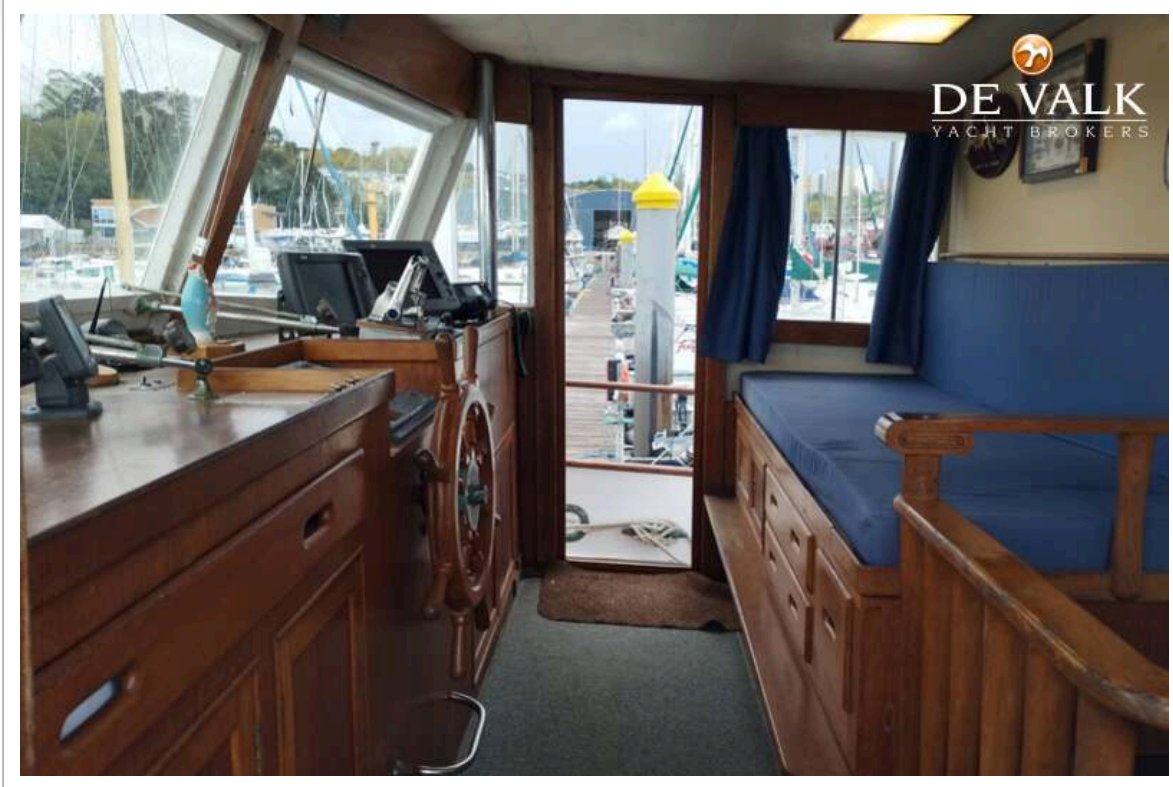


GRAND BANKS 50

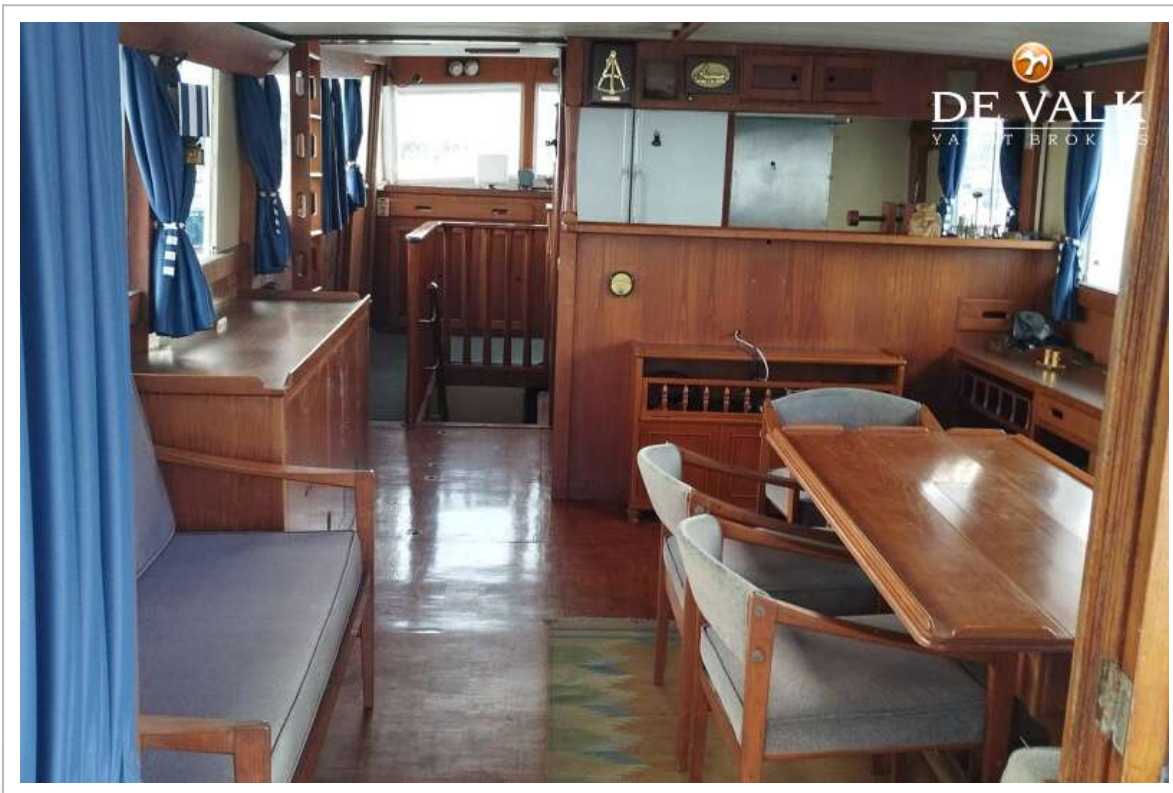




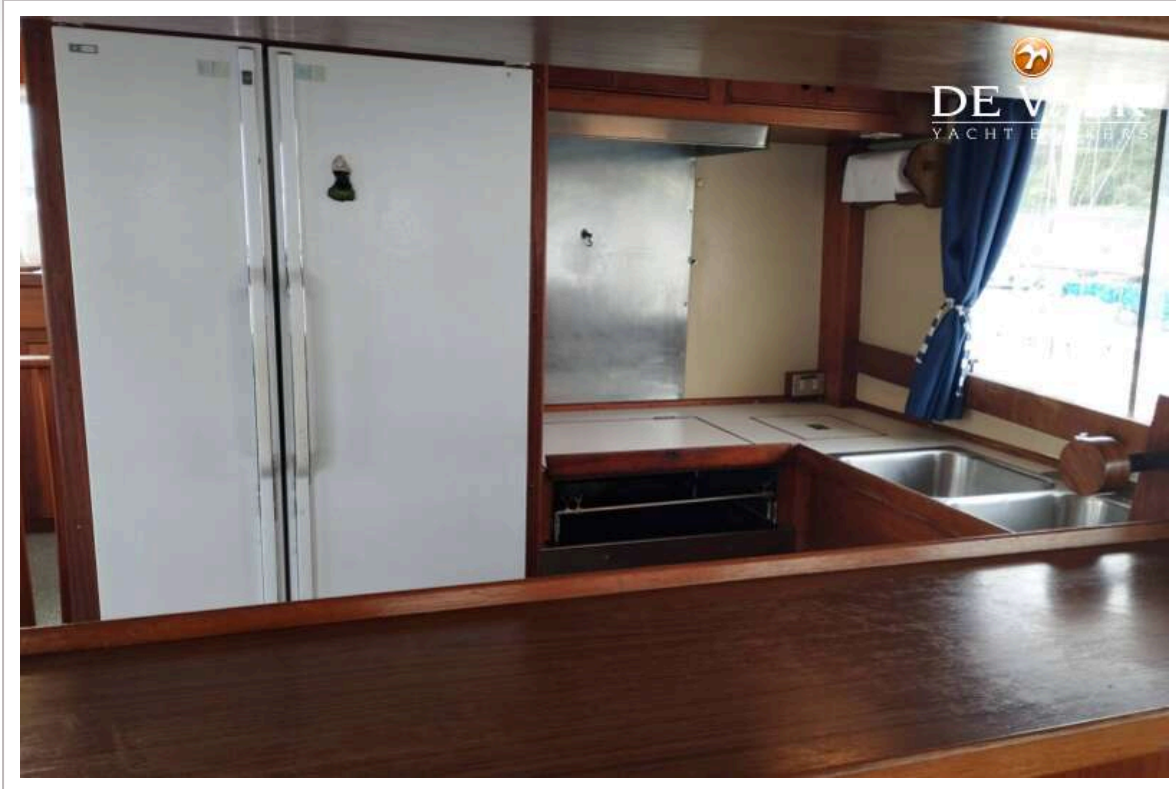
GRAND BANKS 50



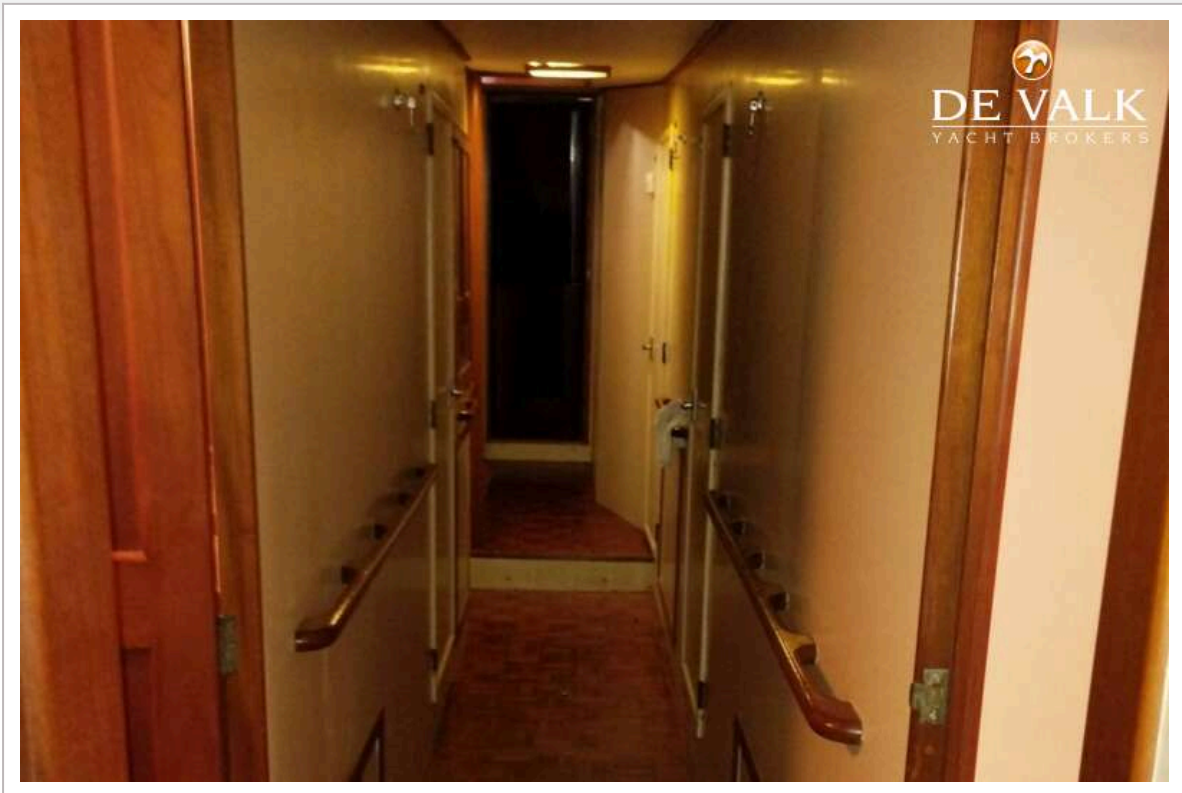
GRAND BANKS 50



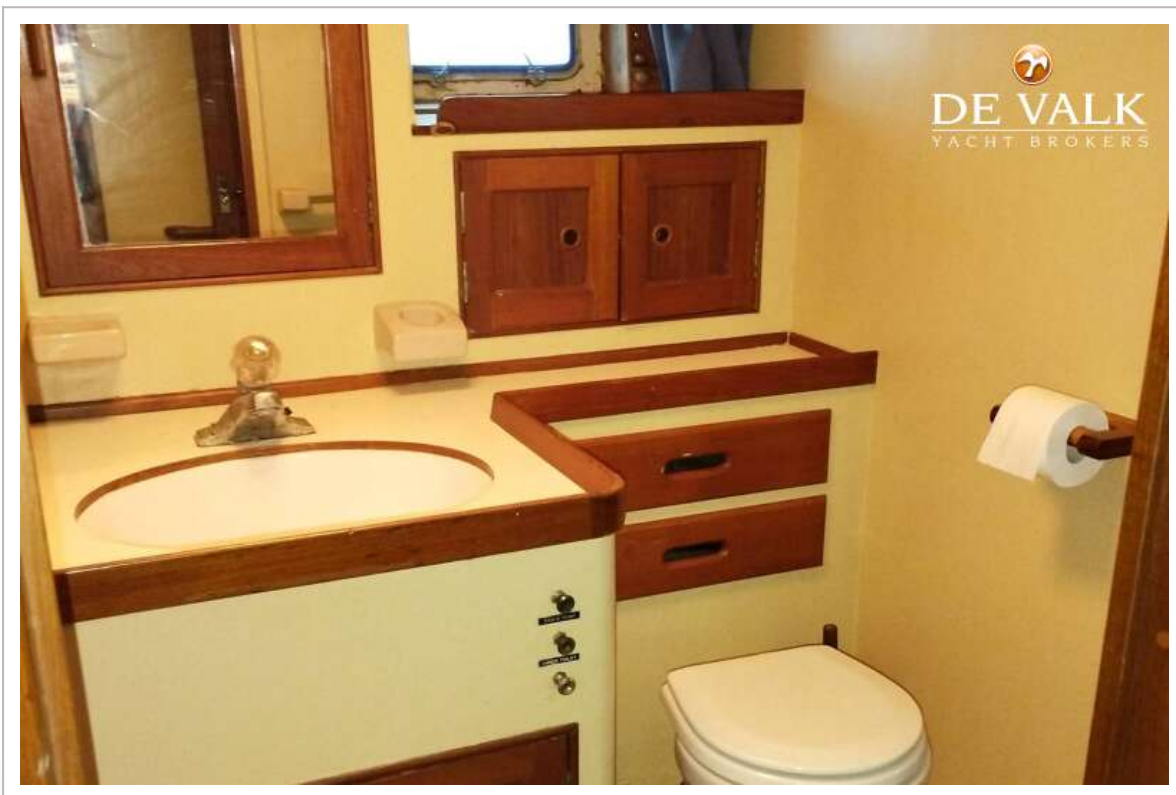
GRAND BANKS 50



GRAND BANKS 50



GRAND BANKS 50



GRAND BANKS 50



GRAND BANKS 50

