



DE VALK  
YACHT BROKERS



## MAGNUM MARINE 38



DE VALK  
YACHT BROKERS

# MAGNUM MARINE 38

## BROKER'S COMMENTS

The Magnum 38 is a fast and fun open boat. It was designed by Dan Aronow and is 3 feet longer than the popular "Maltese", one of the first fast racing boats ever made. It is a very versatile boat; there are several versions of the Magnum 38, such as an open "fishing" cruiser or a cabin cruiser.

*Hartmut Ross*

## SPECIFICATIONS

|                     |                                      |                |                              |
|---------------------|--------------------------------------|----------------|------------------------------|
| <b>Dimensions</b>   | 11.60 x 3.75 x 0.95 (m)              | <b>Builder</b> | Magnum Marine                |
| <b>Built</b>        | 1975                                 | <b>Cabins</b>  | 1                            |
| <b>Material</b>     | GRP                                  | <b>Berths</b>  | 4                            |
| <b>Engine(s)</b>    | 2 x Mercruiser 8,2 L 502Magnum MK6 V | <b>Hp/Kw</b>   | 2 x 420.00 (hp), 309.12 (kw) |
| <b>Asking price</b> | on request (VAT Exempt)              | <b>Lying</b>   | contact Kiel                 |

## CONTACT

|                     |  |                  |                |
|---------------------|--|------------------|----------------|
| <b>Sales office</b> | De Valk Kiel   | <b>Telephone</b> | +49 1712312133 |
| <b>Address</b>      | Hermann Rennerstrasse 12<br>22609 Hamburg<br>Germany | <b>E-mail</b>    | kiel@devalk.nl |

## DISCLAIMER

These particulars are given in good faith as supplied but cannot be guaranteed.



# MAGNUM MARINE 38

## GENERAL

|                             |                  |
|-----------------------------|------------------|
| Model                       | MAGNUM MARINE 38 |
| Type                        | motor yacht      |
| LOA (m)                     | 11,60            |
| Beam (m)                    | 3,75             |
| Draft (m)                   | 0,95             |
| Headroom (m)                | 1,85             |
| Year built                  | 1975             |
| Launched                    | 1975             |
| Builder                     | Magnum Marine    |
| Country                     | U.S.A.           |
| Designer                    | Dan Aronow       |
| Displacement (t)            | 12               |
| Hull material               | GRP              |
| Hull colour                 | blue             |
| Rubbing strake              | stainless steel  |
| Deck material               | GRP              |
| Deck finish                 | teak             |
| Cockpit deck finish         | teak             |
| Antifouling (year)          | 2020             |
| Window frame                | aluminium        |
| Window material             | glass            |
| Portholes                   | yes              |
| Fuel tank (litre)           | 500              |
| Fuel tank 2 (litre)         | 500              |
| Level indicator (fuel tank) | yes              |
| Freshwater tank (litre)     | 15               |
| Wheel steering              | yes              |
| Inside helm position        | yes              |

## ACCOMMODATION



# MAGNUM MARINE 38

|                               |                     |
|-------------------------------|---------------------|
| Cabins                        | 1                   |
| Berths                        | 4                   |
| Open cockpit                  | yes                 |
| Aft deck                      | yes                 |
| Saloon                        | yes                 |
| Headroom saloon (m)           | 1,85                |
| Heating                       | Ebersbacher         |
| Dinette to convert into berth | yes                 |
| Opening door to cockpit       | yes                 |
| Galley                        | yes                 |
| Countertop                    | yes                 |
| Sink                          | yes                 |
| Cooker                        | electric            |
| Fridge                        | New 2017            |
| Hot water system              | yes                 |
| Water pressure system         | yes                 |
| Owners cabin                  | v-bed               |
| Bed length (m)                | 2                   |
| Wardrobe                      | drawers and shelves |
| Bathroom                      | separate            |
| Toilet                        | en suite            |
| Toilet system                 | electric            |
| Wash basin                    | yes                 |
| Shower                        | yes                 |

## MACHINERY

|               |                  |
|---------------|------------------|
| No of engines | 2                |
| Make          | MerCruiser 8,2 L |
| Type          | 502Magnum MK6 V  |
| HP            | 420              |
| kW            | 309.12           |



|                                 |                        |
|---------------------------------|------------------------|
| <b>Year installed</b>           | 2016                   |
| <b>Maximum speed (kn)</b>       | 32                     |
| <b>Engine hours</b>             | 72/74                  |
| <b>Drive</b>                    | shaft                  |
| <b>Gearbox</b>                  | V-Getriebe ZF new 2016 |
| <b>Exhaust</b>                  | yes                    |
| <b>Propeller blades</b>         | 3                      |
| <b>Propeller shaft material</b> | stainless steel        |
| <b>Electric bilge pump</b>      | 3                      |
| <b>Generator</b>                | Honda mobil            |
| <b>Start battery</b>            | 2                      |
| <b>Service battery</b>          | 2                      |
| <b>Battery monitor</b>          | 2                      |
| <b>Battery charger</b>          | Mastervolt new 2020    |
| <b>Inverter</b>                 | 2                      |
| <b>Shorepower</b>               | with cable             |
| <b>Trimtabs</b>                 | New 2016               |

## NAVIGATION

|                          |     |
|--------------------------|-----|
| <b>Compass</b>           | yes |
| <b>Depth sounder</b>     | yes |
| <b>Log</b>               | GPS |
| <b>VHF handheld</b>      | yes |
| <b>Navigation lights</b> | yes |

## EQUIPMENT

|                         |                 |
|-------------------------|-----------------|
| <b>Cockpit cover</b>    | yes             |
| <b>Winter cover</b>     | yes             |
| <b>Bathing platform</b> | yes             |
| <b>Boarding ladder</b>  | stainless steel |
| <b>Deck shower</b>      | yes             |



|                                 |            |
|---------------------------------|------------|
| <b>Anchor</b>                   | yes        |
| <b>Anchor chain</b>             | yes        |
| <b>Windlass</b>                 | electrical |
| <b>Lifebuoy</b>                 | yes        |
| <b>Horn</b>                     | electric   |
| <b>Fenders</b>                  | yes        |
| <b>Mooring lines</b>            | yes        |
| <b>Spare parts</b>              | yes        |
| <b>Tools</b>                    | yes        |
| <b>Fire extinguisher</b>        | New 2016   |
| <b>Auto extinguisher system</b> | New 2016   |



# MAGNUM MARINE 38

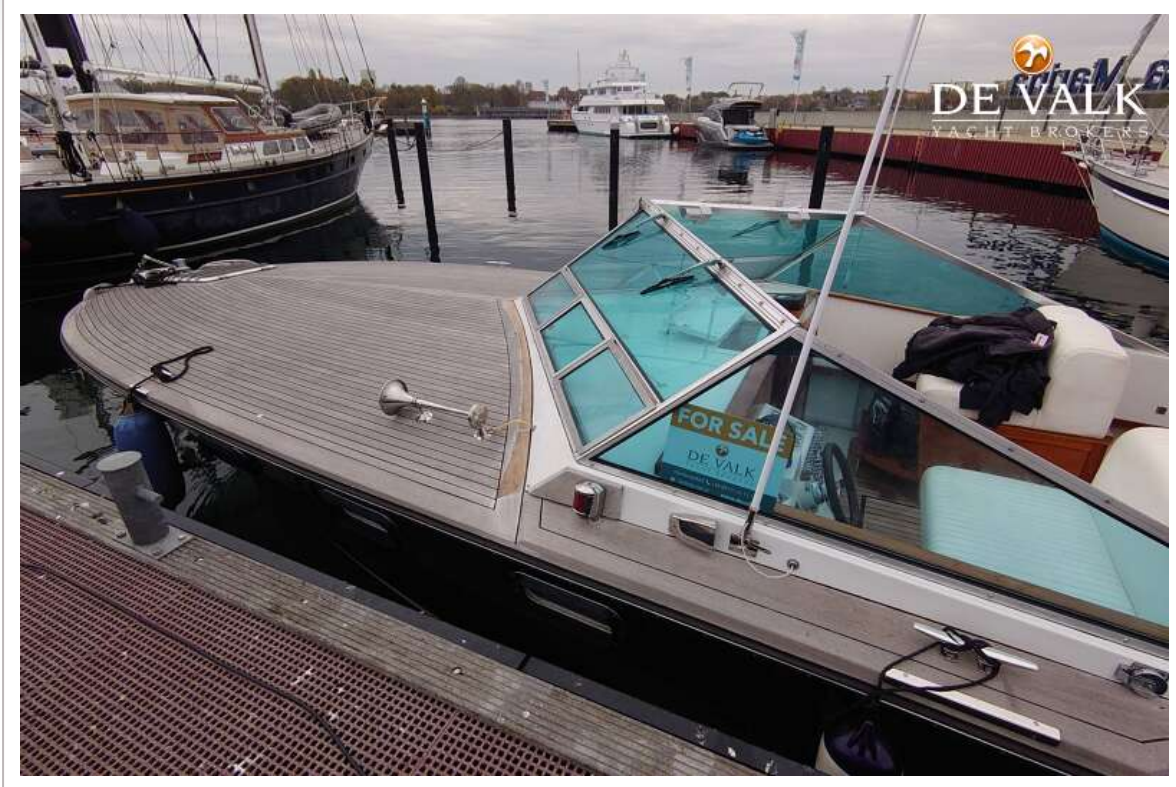


# MAGNUM MARINE 38

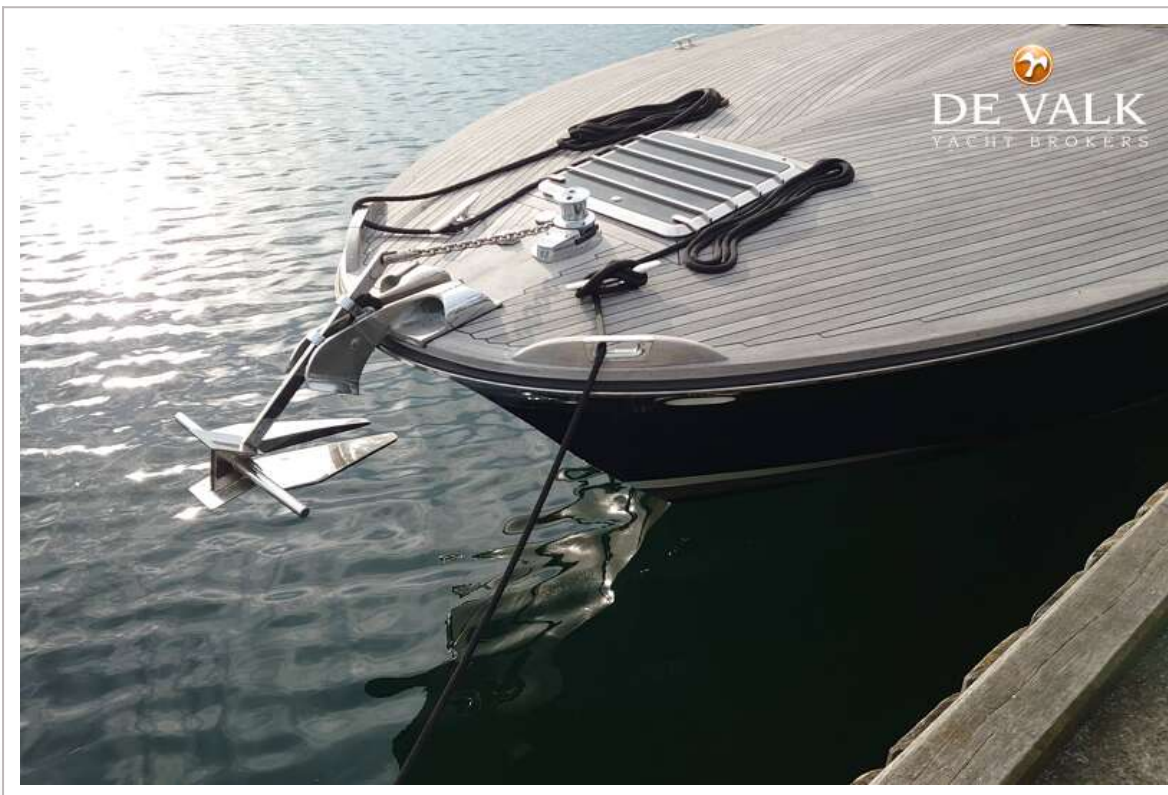




# MAGNUM MARINE 38



# MAGNUM MARINE 38



# MAGNUM MARINE 38



# MAGNUM MARINE 38



# MAGNUM MARINE 38



# MAGNUM MARINE 38



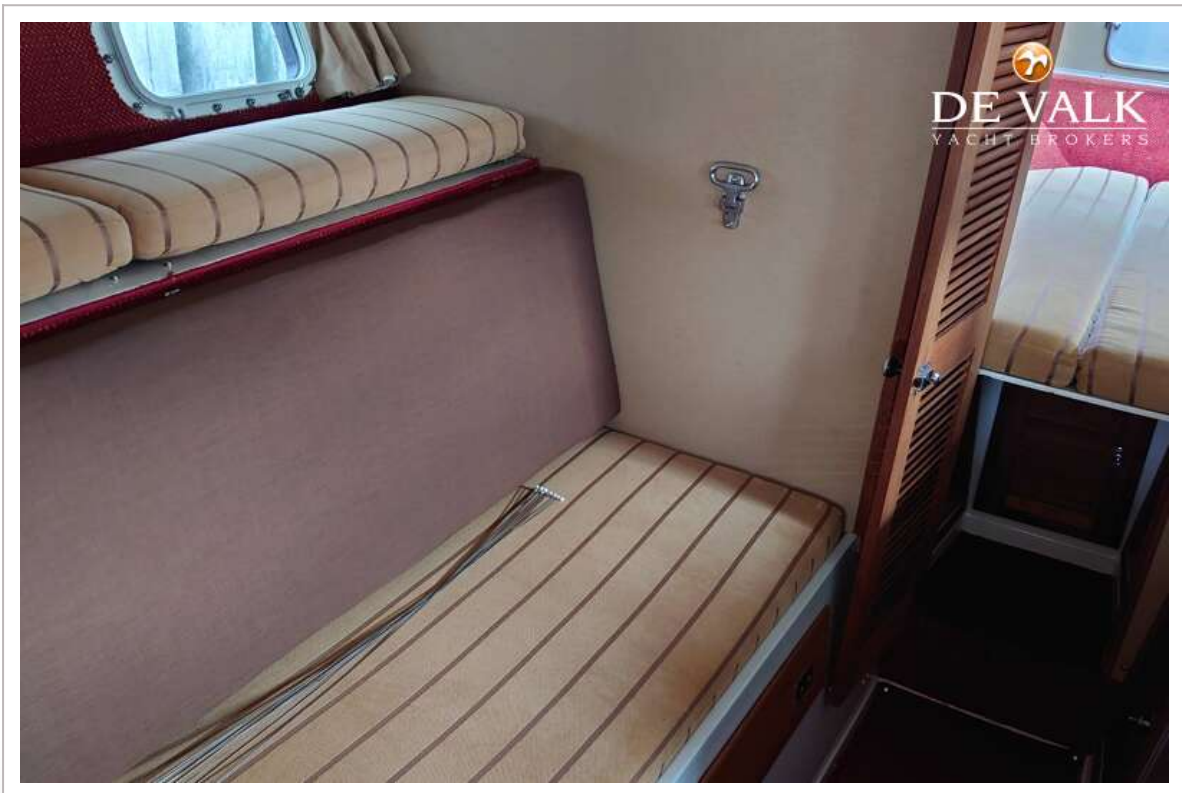
# MAGNUM MARINE 38



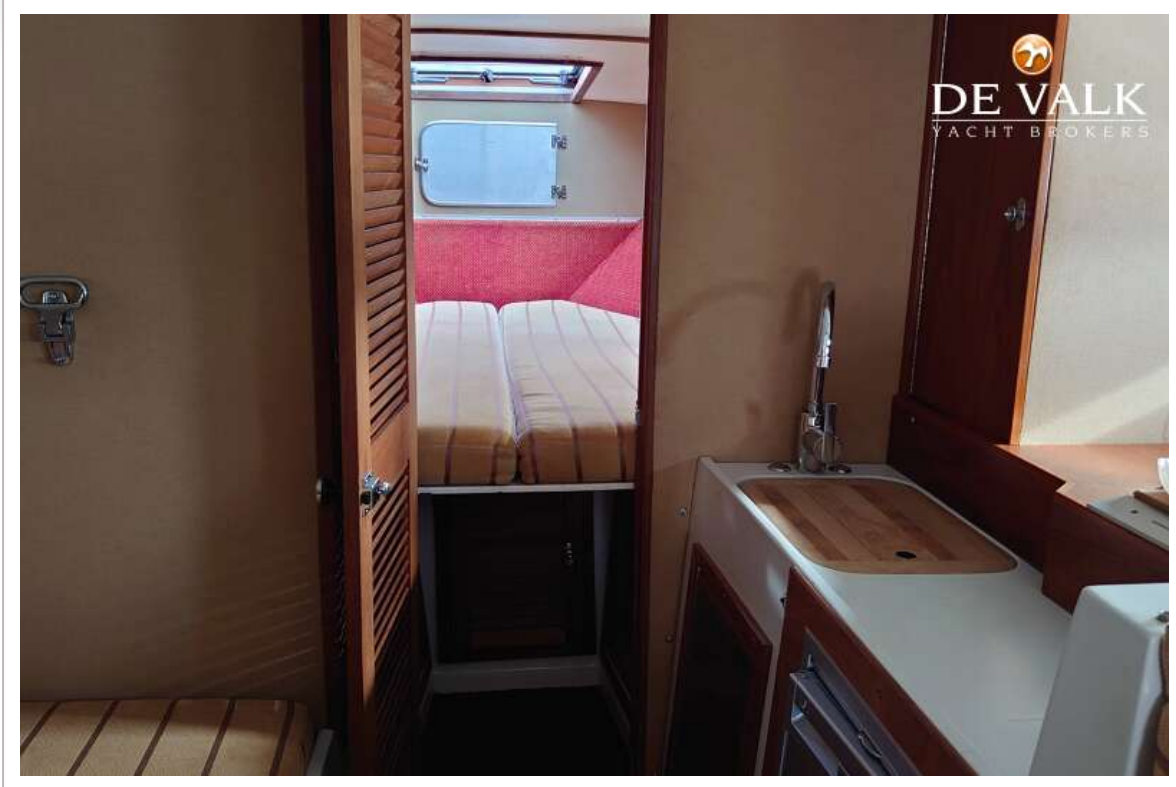
# MAGNUM MARINE 38





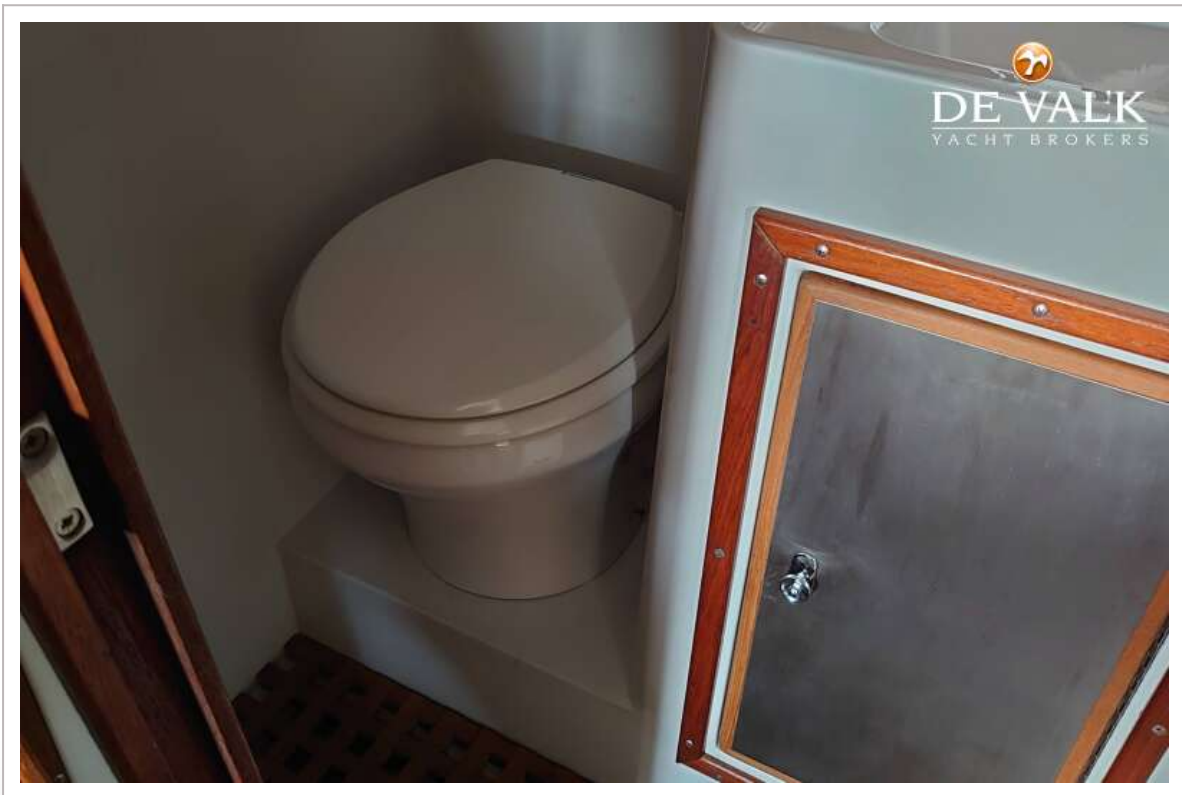
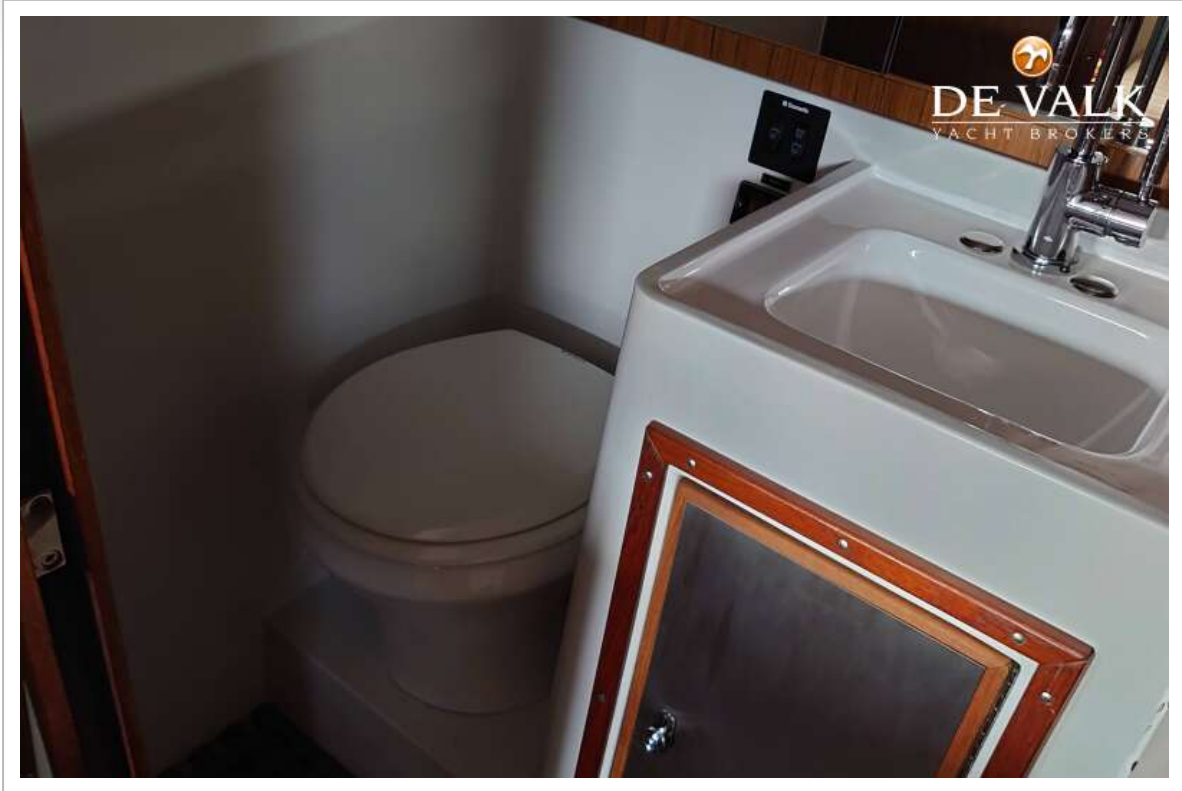


# MAGNUM MARINE 38



# MAGNUM MARINE 38





# MAGNUM MARINE 38

