



DE VALK  
YACHT BROKERS



## OYSTER 885



DE VALK  
YACHT BROKERS

# OYSTER 885

## BROKER'S COMMENTS

Guardian Angel is a stunning example of Oyster 885. With her customized interior arrangement plan she is ideal for comfortable passages and due to upgraded rigging and sails equally capable of making a statement on the racecourse. Oyster 885 is a remarkable 90 foot blue water sailing yacht. Designed by Rob Humphreys with sailing and entertaining in mind, engineered by Oyster to deliver uncompromising luxury and performance. At just under 90 feet, the Oyster 885 comes in just below the 24m Load Line Rule, which means less red tape with the benefits of a much larger yacht. Offers invited!

*Miha Spental*

## SPECIFICATIONS

<b>Dimensions</b>	27.08 x 6.33 x 3.50 (m)	<b>Builder</b>	Oyster Yachts
<b>Built</b>	2015	<b>Cabins</b>	4
<b>Material</b>	GRP	<b>Berths</b>	8
<b>Engine(s)</b>	1 x Cummins QSL 9-M diesel	<b>Hp/Kw</b>	330.00 (hp), 242.88 (kw)
<b>Asking price</b>	€ 4.999.000 (VAT Not paid)	<b>Lying</b>	elsewhere / Not at sales office

## CONTACT

<b>Sales office</b>	De Valk Istria	<b>Telephone</b>	+386 (1) 600 2704
<b>Address</b>	(Marina Izola) Dantejeva Ulica 22 6310 Izola Slovenia	<b>E-mail</b>	istria@devalk.nl

## DISCLAIMER

These particulars are given in good faith as supplied but cannot be guaranteed.



## GENERAL

Model	OYSTER 885
Type	sailing yacht
LOA (m)	27,08
LWL (m)	24,18
Beam (m)	6,33
Draft (m)	3,50
Year built	2015
Launched	2015
Builder	Oyster Yachts
Country	United Kingdom
Designer	Rob Humphreys
Displacement (t)	71
Hull material	GRP
Hull colour	blue Metallic dark blue Awlcraft
Hull shape	yes
Keel type	bulb keel
Superstructure material	GRP
Deck material	GRP
Deck finish	teak
Superstructure deck finish	non-skid paint
Cockpit deck finish	teak
Antifouling (year)	2022
Radar arch	Radar pole aft
Fuel tank (litre)	3500
Level indicator (fuel tank)	yes
Freshwater tank (litre)	2000
Level indicator (freshwater)	yes
Blackwater tank (litre)	yes
Level indicator (blackwater)	yes
Blackwater tank extraction	yes



Greywater tank (litre)	yes
Level indicator (greywater)	yes
Wheel steering	yes
Outside helm position	hydraulic

## ACCOMMODATION

Cabins	4
Berths	8
Crew cabin	1
Crew berths	2
Interior	walnut Crown cut walnut, gloss finish
Layout	Custom interior, foam core joinery for light weight construction
Floor	teak V-groove maple satin finish
Aft deck	yes
Deck saloon	Raised saloon version - one level floor, no steps in the saloon
Saloon	yes
Heating	central hot water
Air-conditioning	reverse cycle airco
Navigation center	yes
Chart table	yes
Aft Cabin	Owners
Dining room	yes
Dinette	In crew cabin
Sliding door to cockpit	yes
Opening door to cockpit	Electric
Galley	yes
Countertop	corian White
Sink	stainless steel
Cooker	ceramic Electric
Oven	Electric
Extractor	yes



Gas alarm	yes
Microwave/oven combi	Miele
Fridge	Frigoboa
Freezer	Frigoboat
Wine cooler	In saloon
Hot water system	220V + engine
Water pressure system	electrical
Dishwasher	Miele
Kettle	yes
Hot water tap	yes
Coffee maker	yes
Crockery	yes
Waste compactor	Broan
Owners cabin	double bed
Wardrobe	hanging/drawers/shelves
Bathroom	en suite
Toilet	en suite
Toilet system	electric Tecma
Wash basin	in the bathroom
Shower	en suite
Guest cabin 1	double bed
Wardrobe	hanging/drawers/shelves
Toilet	shared
Toilet system	electric Tecma
Wash basin	in the bathroom
Shower	shared
Guest cabin 2	twin single
Wardrobe	hanging/drawers/shelves
Bathroom	shared
Toilet	shared
Toilet system	electric Tecma
Wash basin	in the bathroom



Shower	shared
Crew cabin(s)	2 bunk berths
Bathroom (crew)	yes
Toilet (crew)	en suite
Toilet system	electric Tecma
Wash basin	in the bathroom
Shower (crew)	yes
Washing machine/dryer combi	Miele

## MACHINERY

No of engines	1
Make	Cummins
Type	QSL 9-M
HP	330
kW	242.88
Fuel	diesel
Year installed	2015
Maximum speed (kn)	12
Cruising speed (kn)	10
Engine hours	6200
Engine cooling system	freshwater heat exchanger
Drive	shaft
Engine controls	electrical
Bowthruster	hydraulic
Sternthruster	hydraulic
Propeller type	folding 4 blade Bruntons
Propeller blades	1
Propeller shaft material	stainless steel
Electric bilge pump	yes
Bilge alarm	yes
Electrical installation	yes



# OYSTER 885

<b>Generator</b>	silent separator Onan Cummins 22,5kw
<b>Running hours generator</b>	1850
<b>Generator 2</b>	silent separator Onan Cummins 13,5kw
<b>Running hours generator 2</b>	6500
<b>Batteries</b>	yes
<b>Start battery</b>	yes
<b>Service battery</b>	Lithium, new batteries 2024
<b>Generator battery</b>	yes
<b>Battery monitor</b>	yes
<b>Battery charger</b>	yes
<b>Inverter</b>	yes
<b>Shorepower</b>	with cable
<b>Watermaker</b>	Cathelco Seafresh Ltd

## NAVIGATION

<b>Compass</b>	yes
<b>Electric compass</b>	Raymarine
<b>Multi control display</b>	Raymarine
<b>Depth sounder</b>	Raymarine
<b>Log</b>	Raymarine
<b>Windset</b>	Raymarine
<b>Repeater</b>	Raymarine
<b>VHF</b>	yes
<b>VHF handheld</b>	yes
<b>Autopilot</b>	2 pilots, Raymarine
<b>Rudder angle indicator</b>	yes
<b>Radar</b>	yes
<b>GPS</b>	Raymarine
<b>Plotter</b>	Raymarine
<b>Weather receiver</b>	yes
<b>Personal computer</b>	yes



PC connection	yes
Wifi antenna	yes
Electronis chart(s)	yes
AIS transceiver	yes
Radio receiver	yes
EPIRB	yes
Camera	Raymarine
Navigation lights	yes
Loudhailer	yes

## EQUIPMENT

Sprayhood	yes
Bimini	yes
Cockpit cushions	yes
Cockpit table	yes
Bathing platform	yes
Boarding ladder	yes
Transom door	yes
Gangway	Hydraulic
Deck shower	yes
Anchor	yes
Anchor chain	yes
Chain counter	yes
Windlass	electrical Quick
Deck wash	yes
Dinghy	rigid inflatable
Outboard	yes
Life raft	Ocean Safety x 2
Lifejackets	yes
Danbuoy	Jon Buoy 2 pcs by Oceansafety
Rope cutter	yes





<b>Radar reflector</b>	yes
<b>Fenders</b>	yes
<b>Mooring lines</b>	yes
<b>Spare parts</b>	yes
<b>TV</b>	yes
<b>Satellite</b>	Fb250 Fleet Broadband, Satelite phone,
<b>TracVision ball</b>	yes
<b>Radio</b>	yes
<b>DVD player</b>	yes
<b>Cockpit speakers</b>	yes
<b>Fire extinguisher</b>	yes
<b>Extinguisher in engine room</b>	yes

## RIGGING

<b>Rigging</b>	sloop
<b>Standing rigging</b>	PBO and carbon
<b>Brand mast</b>	Hallspars
<b>Material mast</b>	carbon
<b>Spreaders</b>	4
<b>Mainsail</b>	yes
<b>Fully battened mainsail</b>	yes
<b>Furling boom</b>	yes
<b>Genoa</b>	yes
<b>Genoa furler</b>	Hydraulic Reckmann
<b>Code Zero</b>	yes
<b>Gennaker</b>	A1, A2, A3
<b>A-symmetric spi</b>	yes
<b>Staysail</b>	yes
<b>Removable innerforestay</b>	yes
<b>Reefing System</b>	main in-boom furling
<b>Backstay adjuster</b>	hydraulic



<b>Boomvang</b>	hydraulic
<b>Multifunctional winches</b>	halyard/sheet winches 6
<b>Spi-pole</b>	carbon
<b>Isolated backstay</b>	yes



# OYSTER 885





# OYSTER 885



# OYSTER 885



# OYSTER 885



# OYSTER 885





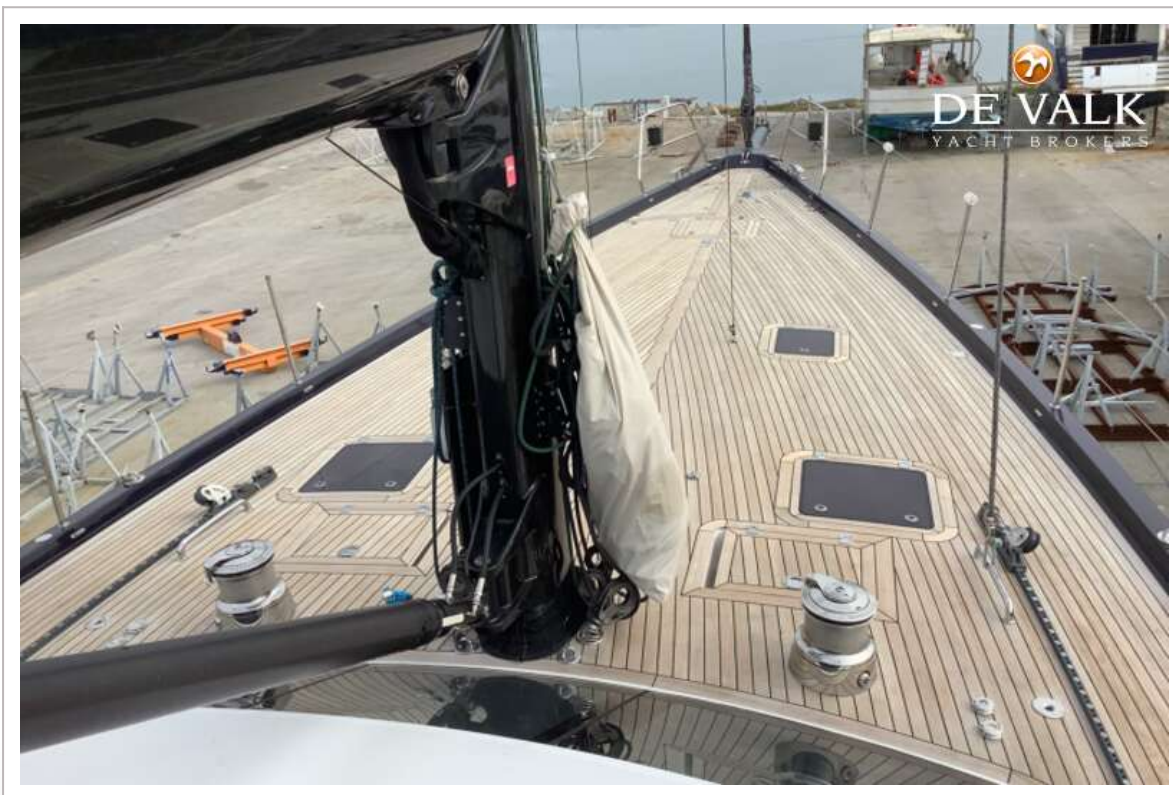
# OYSTER 885



# OYSTER 885



# OYSTER 885



# OYSTER 885



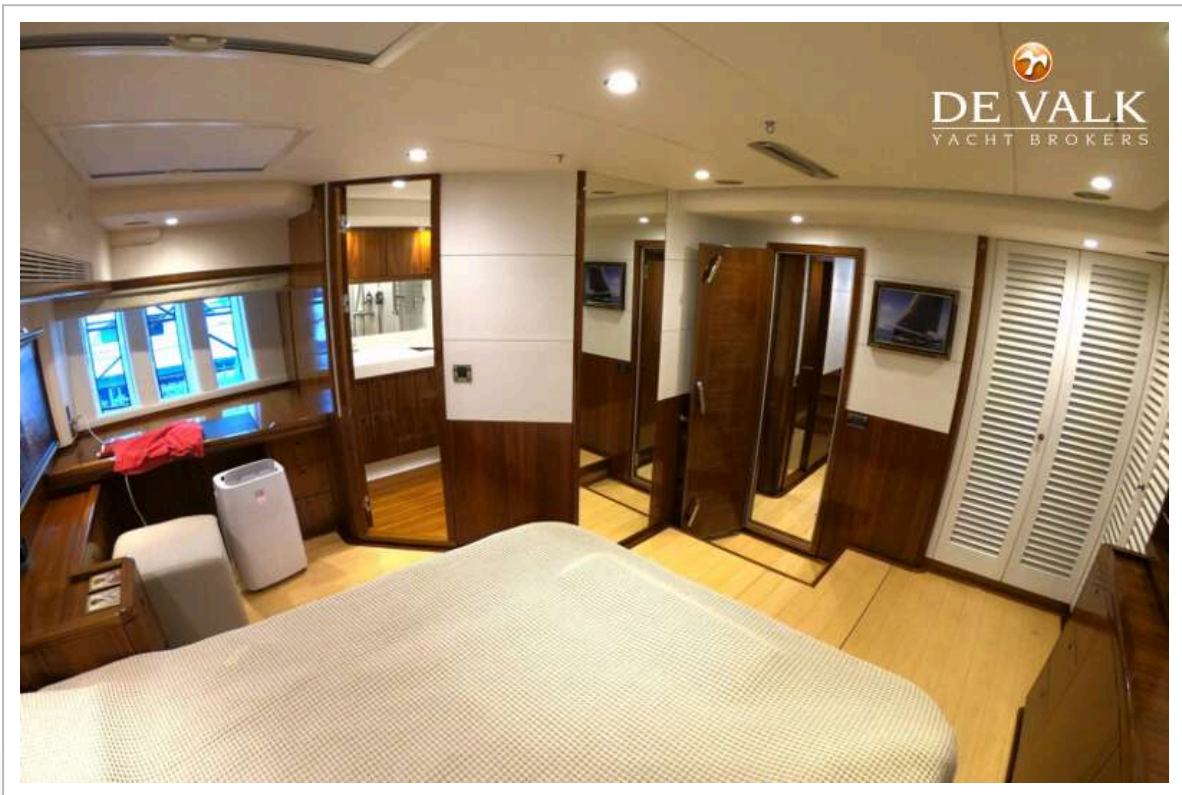
# OYSTER 885



# OYSTER 885



# OYSTER 885

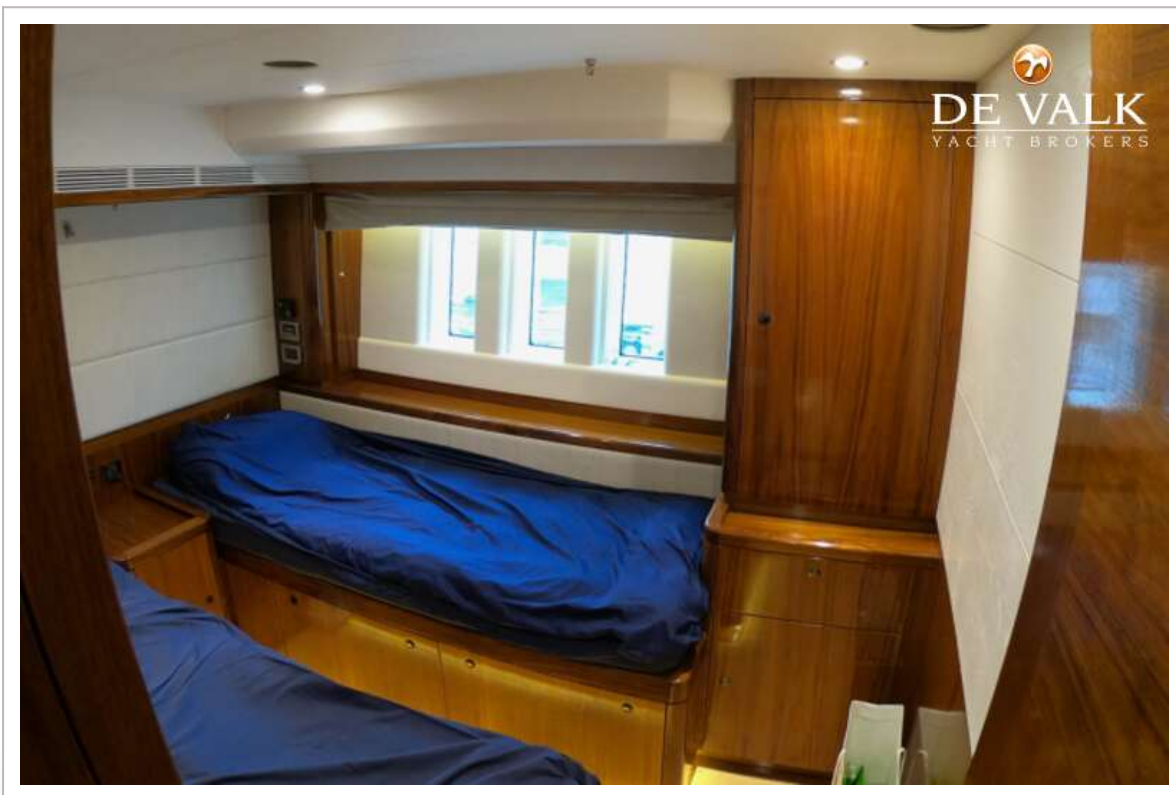


# OYSTER 885

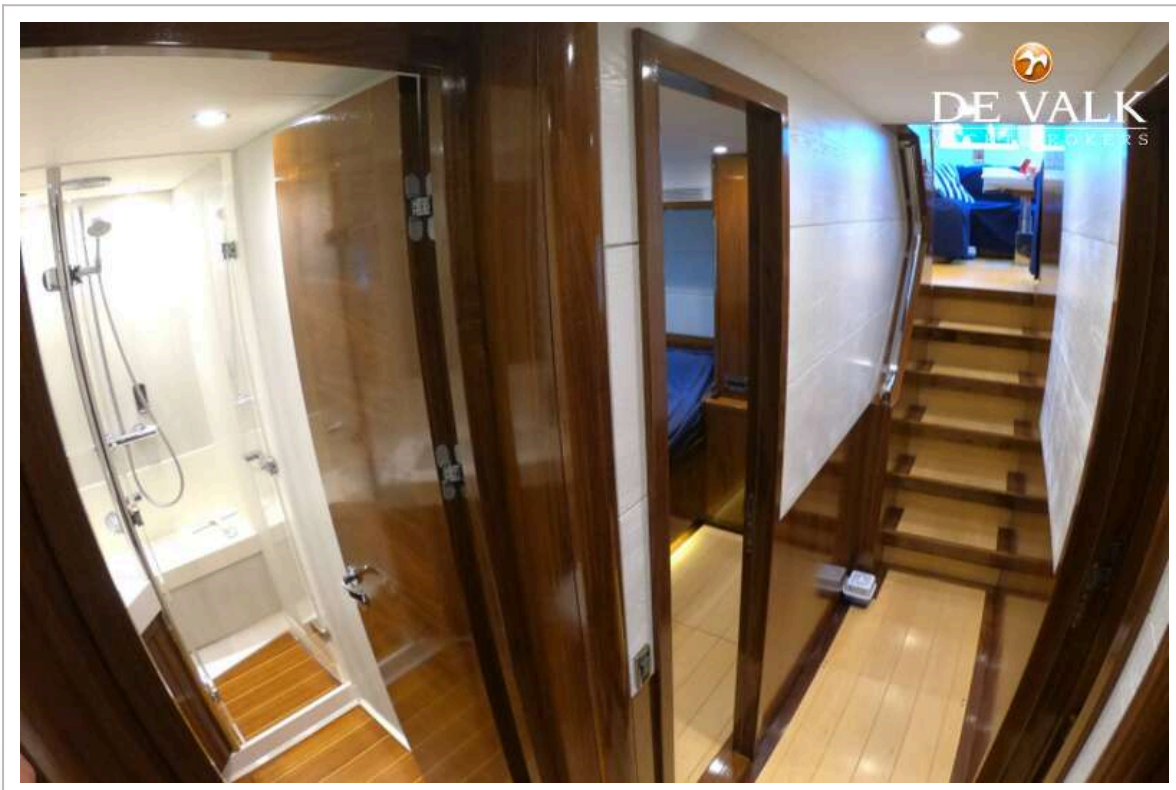




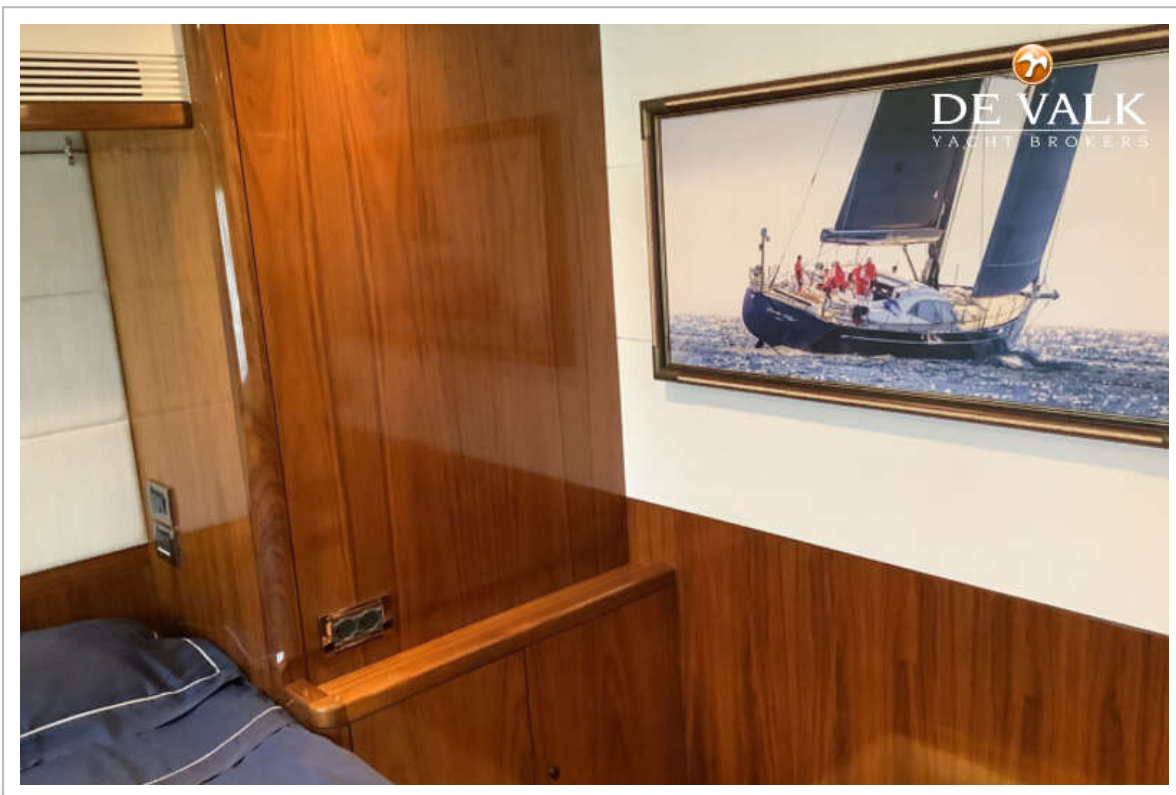
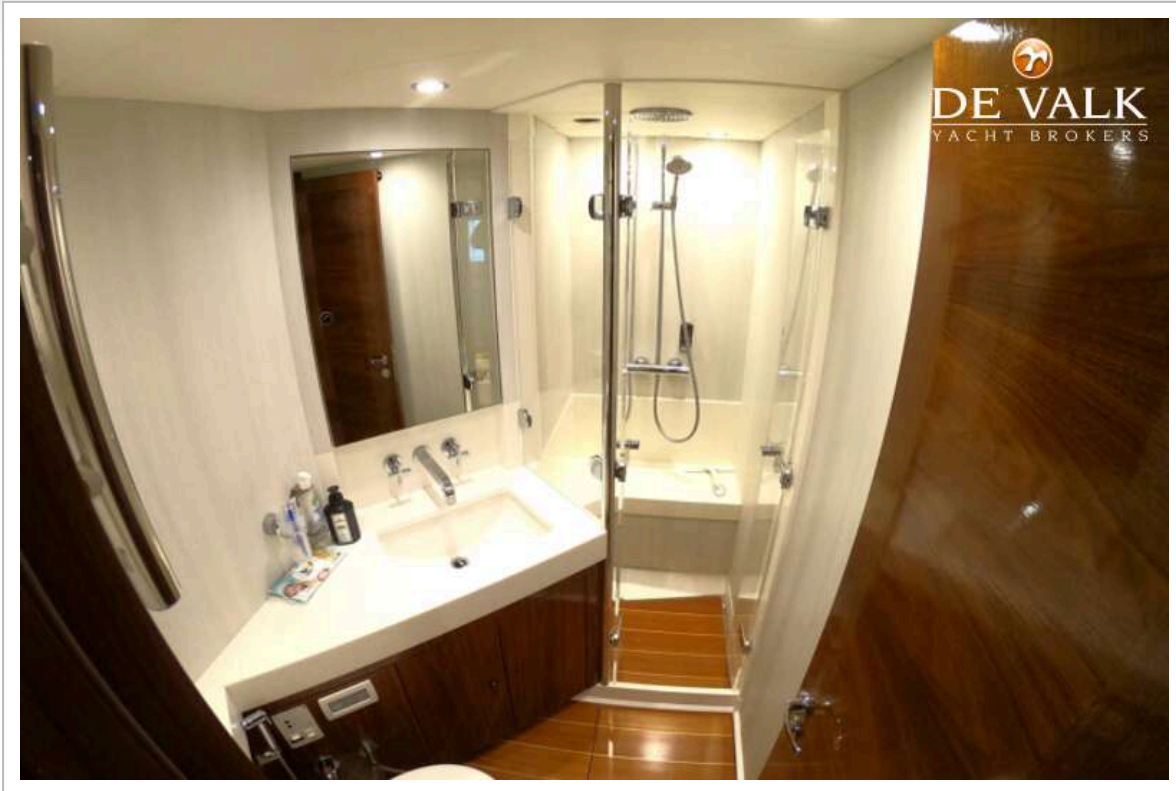
# OYSTER 885



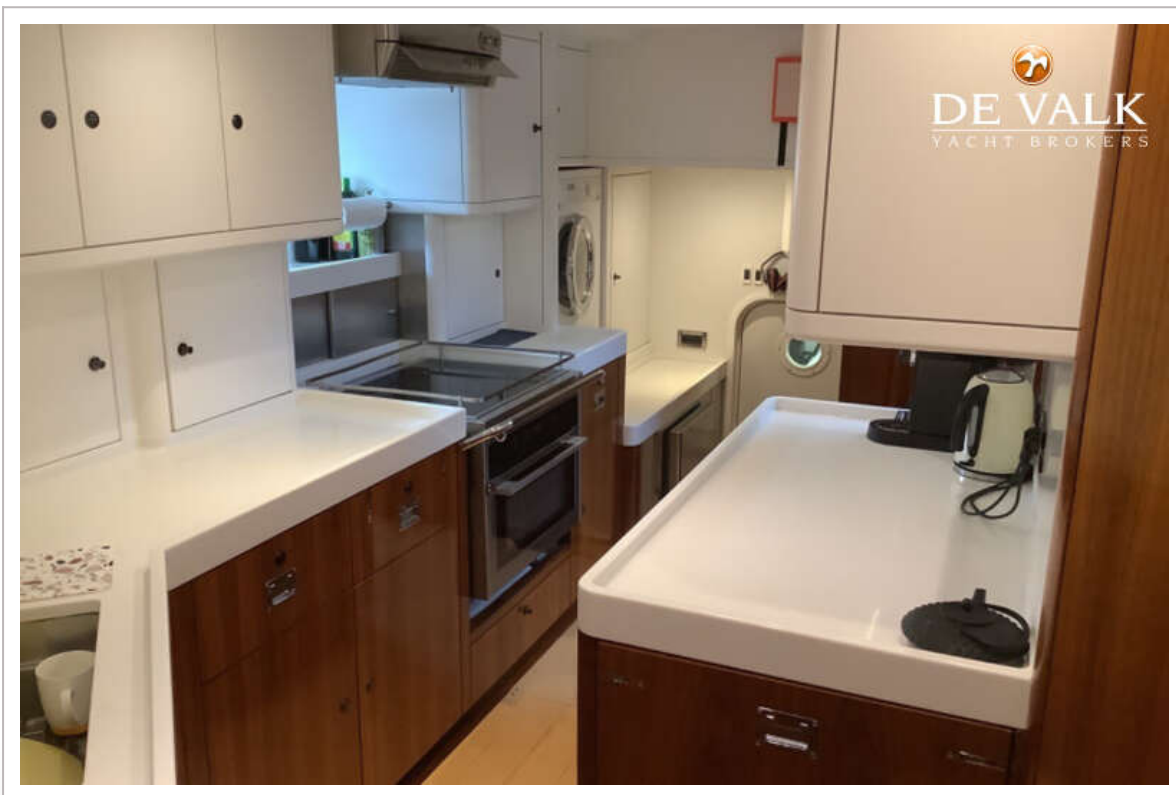
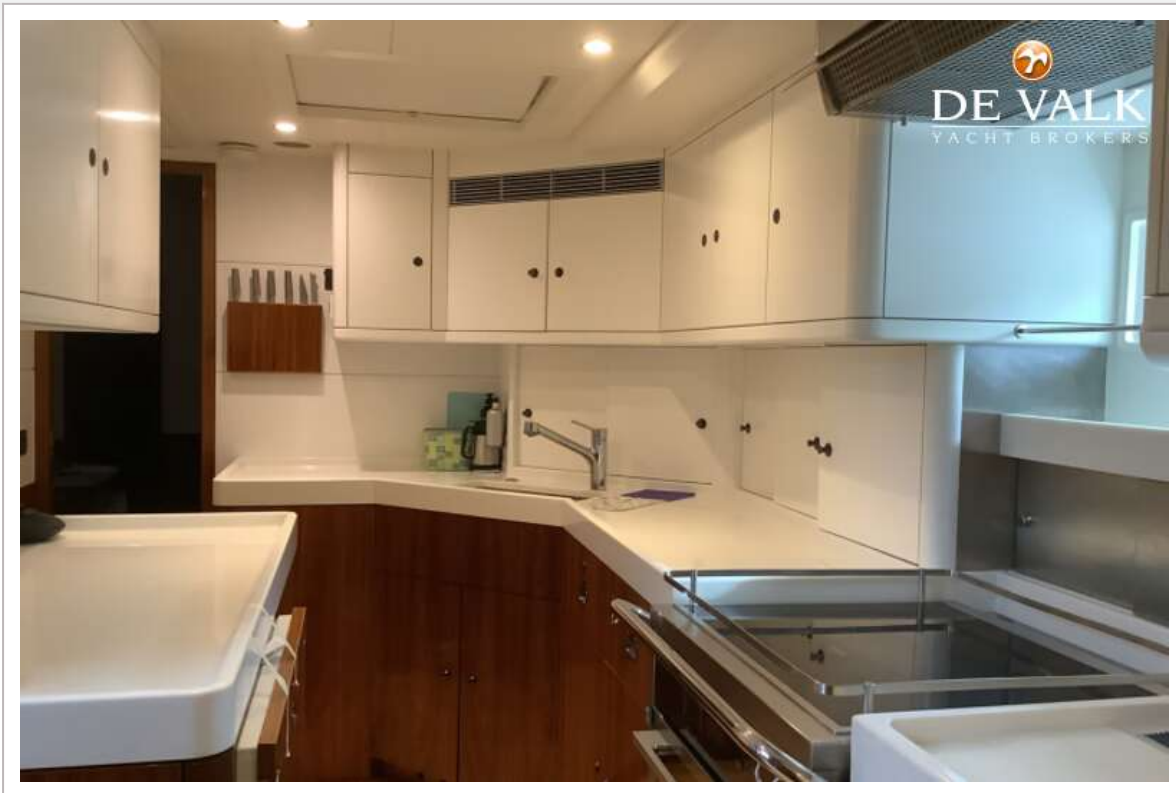
# OYSTER 885



# OYSTER 885



# OYSTER 885



# OYSTER 885

