



DE VALK
YACHT BROKERS



HANS CHRISTIAN 38



DE VALK
YACHT BROKERS

BROKER'S COMMENTS

The WINGS OF THE MORNING sailboat is a HANS CHRISTIAN 38 Tellstar, built in 1986 and imported into Europe in 2006, it has a running keel and independent rudder. This boat has been carefully maintained by her last two owners. It has not made transatlantic crossings, it has not had any collisions, it totally lacks osmosis, a complete overhaul of the hull in 2006 when it was imported to the US, it currently has a Spanish flag. The boat is fully equipped and ready to sail.

Alfonso Fernández Vidal

SPECIFICATIONS

Dimensions	11.58 x 3.76 x 1.83 (m)	Builder	
Built	1986	Cabins	2
Material	GRP	Berths	5
Engine(s)	1 x YANMAR 4JH5E diesel	Hp/Kw	54.00 (hp), 39.74 (kw)
Asking price	sold (VAT)	Lying	at sales office

CONTACT

Sales office	De Valk A Coruña	Telephone	+34 881 800 469
Address	MARINA CORUÑA VARADERO - Dársena Deportiva Faro de Oza s/n 15006 A Coruña Spain	E-mail	acoruna@devalk.nl

DISCLAIMER

These particulars are given in good faith as supplied but cannot be guaranteed.



GENERAL

Model	HANS CHRISTIAN 38
Type	sailing yacht
LOA (m)	11,58
Beam (m)	3,76
Draft (m)	1,83
Year built	1986
Displacement (t)	12
Hull material	GRP
Hull colour	blue
Keel type	long keel
Superstructure material	GRP
Deck material	GRP
Deck finish	teak (2016 NEW)
Superstructure deck finish	teak
Antifouling (year)	2022
Fuel tank (litre)	380
Level indicator (fuel tank)	yes
Freshwater tank (litre)	380
Level indicator (freshwater)	yes

ACCOMMODATION

Cabins	2
Berths	5
Saloon	yes
Headroom saloon (m)	2m
Heating	yes
Navigation center	yes
Chart table	yes
Opening door to cockpit	yes
Countertop	wood



Cooker	yes
Oven	yes
Fridge	yes
Hot water system	yes
Water pressure system	electrical
Bathroom	yes
Toilet	separate
Toilet system	manual
Shower	yes
Extra info	New upholstery throughout inside (2022) New sprayhood (2022)

MACHINERY

No of engines	1
Make	YANMAR
Type	4JH5E
HP	54
kW	39.74
Fuel	diesel
Year installed	2014
Drive	shaft
Shaft seal	yes
Propeller type	feathering
Propeller blades	3
Shaft lubrication	grease
Manual bilge pump	yes
Electric bilge pump	yes
Electrical installation	yes
Batteries	AGM OPTIMAS (2016) 4
Sternthruster battery	yes
Battery monitor	DOMETIC (2020)
Battery charger	DOMETIC (2018)



Solar panel yes

NAVIGATION

Compass YES
 Depth sounder GARMIN YES
 Windset yes
 VHF ICOM
 VHF handheld yes
 Autopilot RAYTHEON 6000
 Radar GARMIN
 GPS GARMIN
 Plotter GARMIN
 AIS receiver yes
 AIS transponder yes
 EPIRB yes
 Navigation lights yes

EQUIPMENT

Sprayhood New 2022
 Cockpit cover New 2022
 Anchor yes
 Anchor chain yes
 Windlass yes
 Life raft container Guivens
 Life raft (pers) 6
 Lifejackets yes
 Lifebuoy yes
 Fire extinguisher yes

RIGGING



Rigging	sloop
Standing rigging	wire
Mainsail	40m2 DACRON
Genoa	50m2 DACRON
Stormjib	10m2 DACRON
Extra info	2018 NEW SHEETS FOR MAIN, GENOA AND STORM-JIB



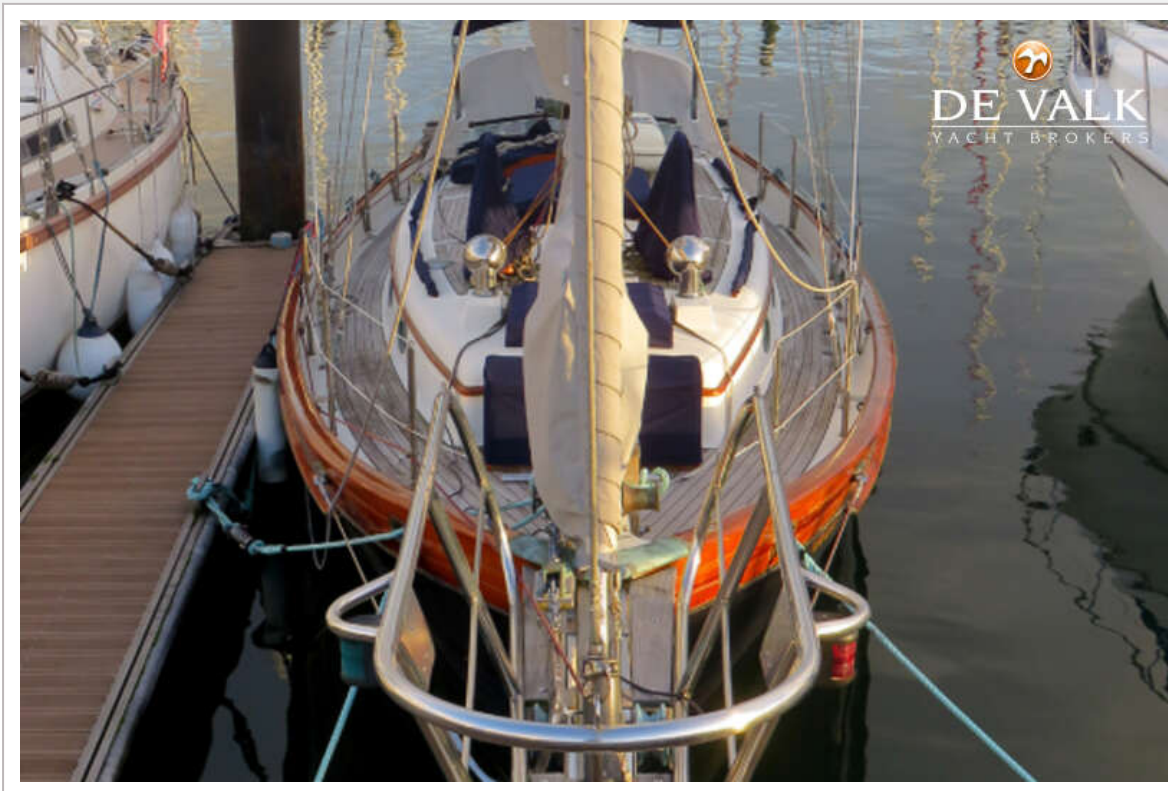


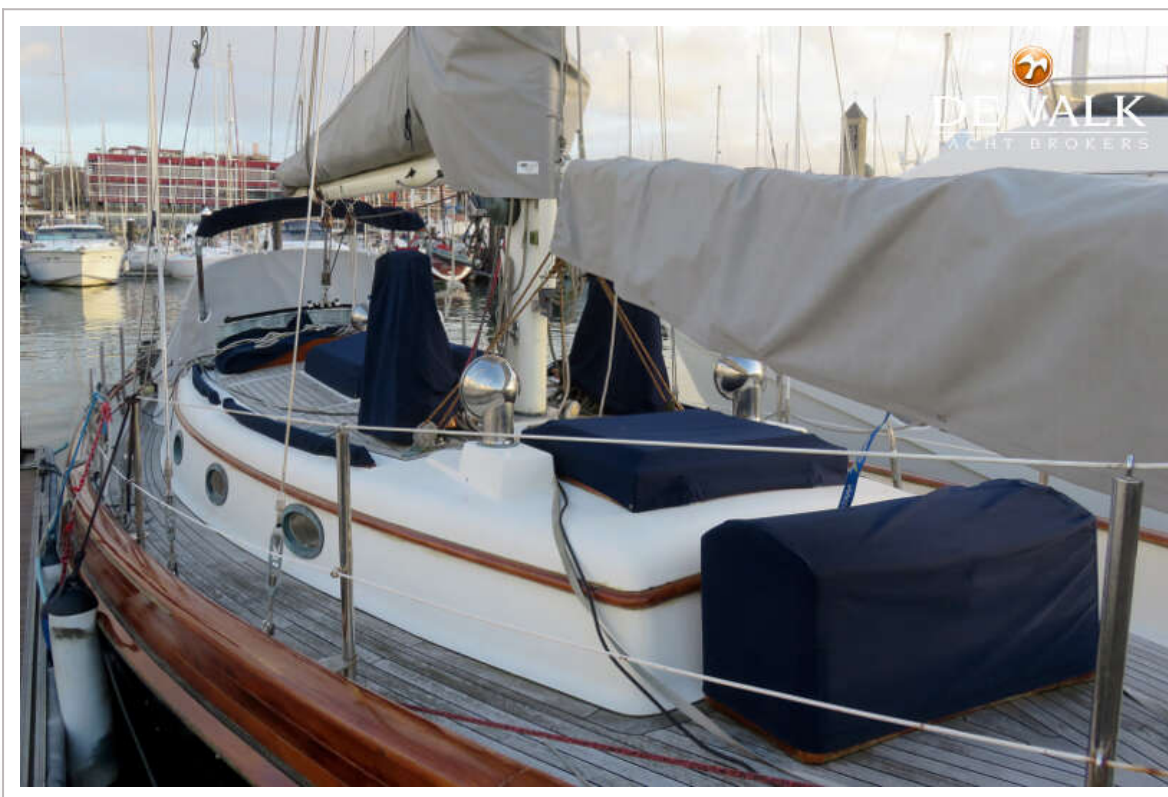
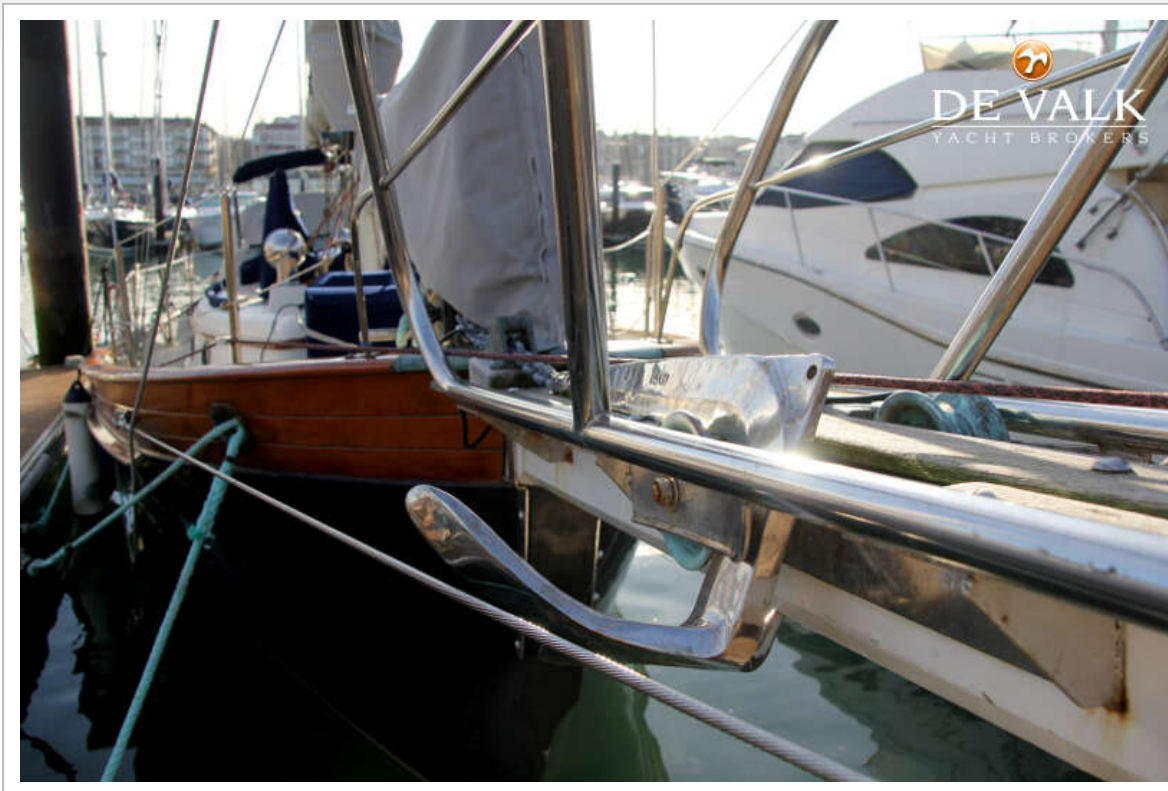


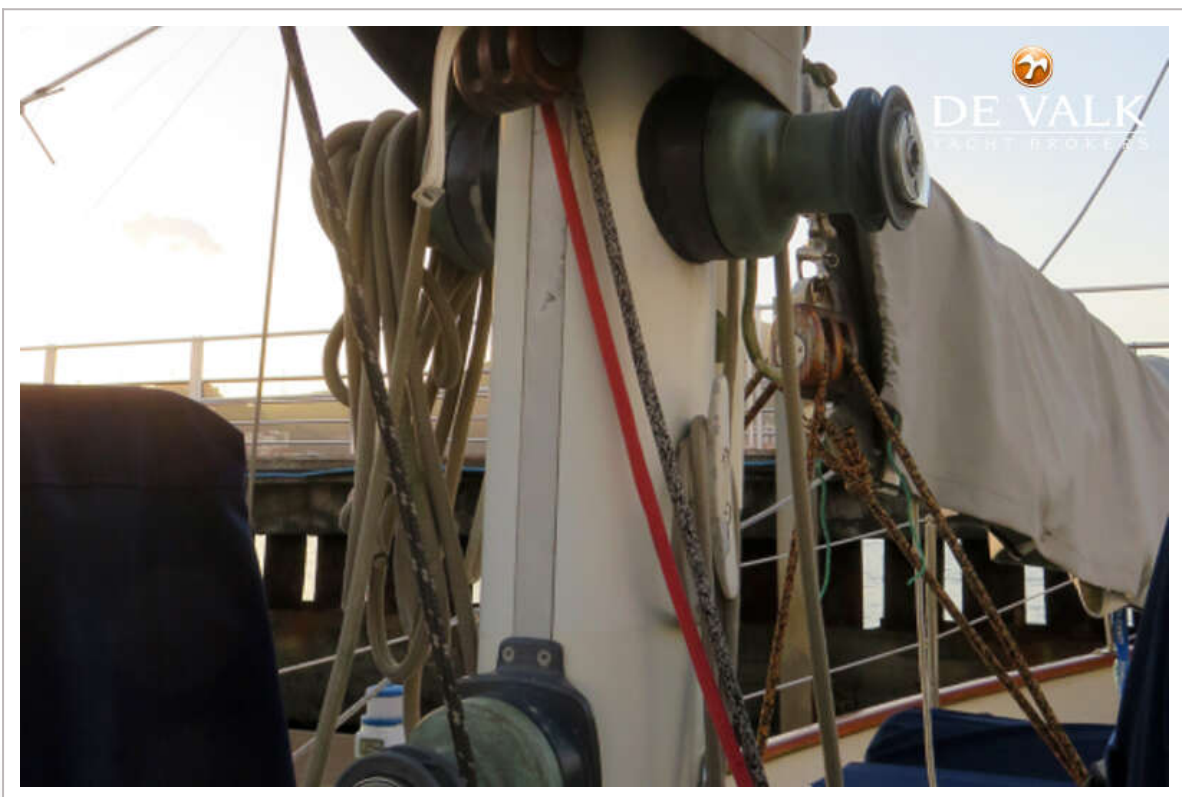
HANS CHRISTIAN 38



HANS CHRISTIAN 38

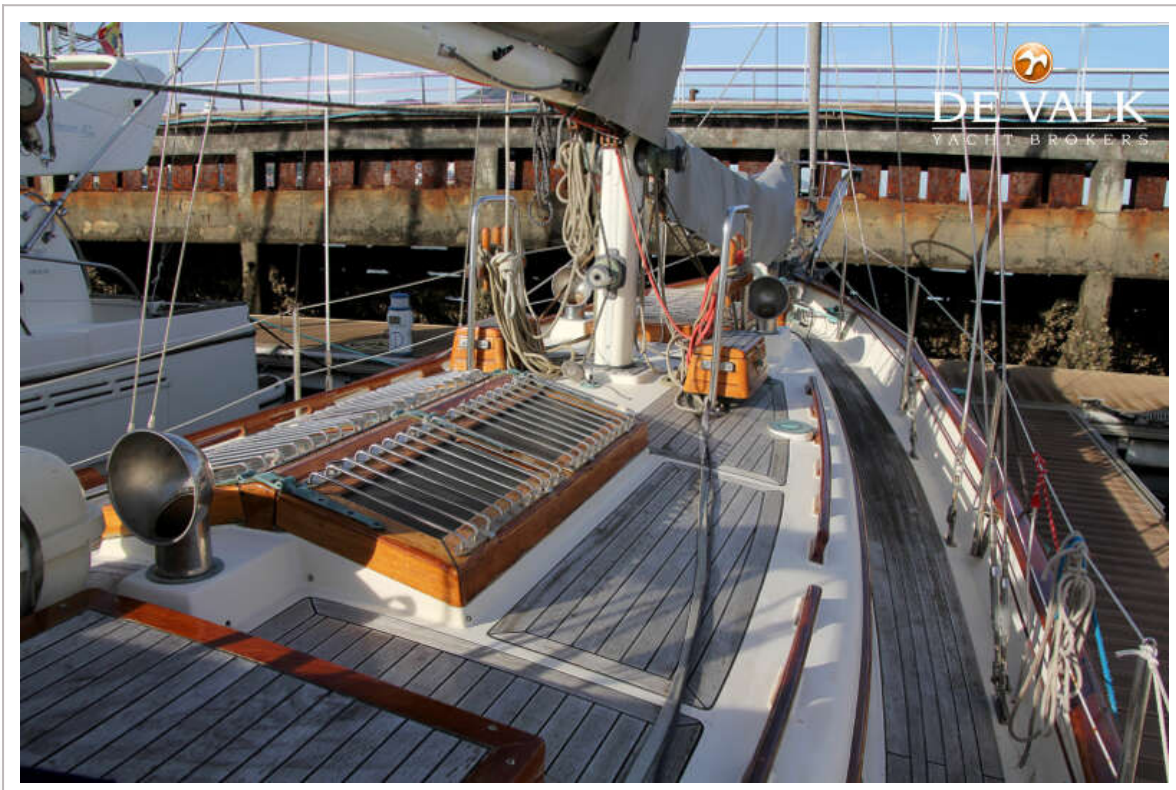
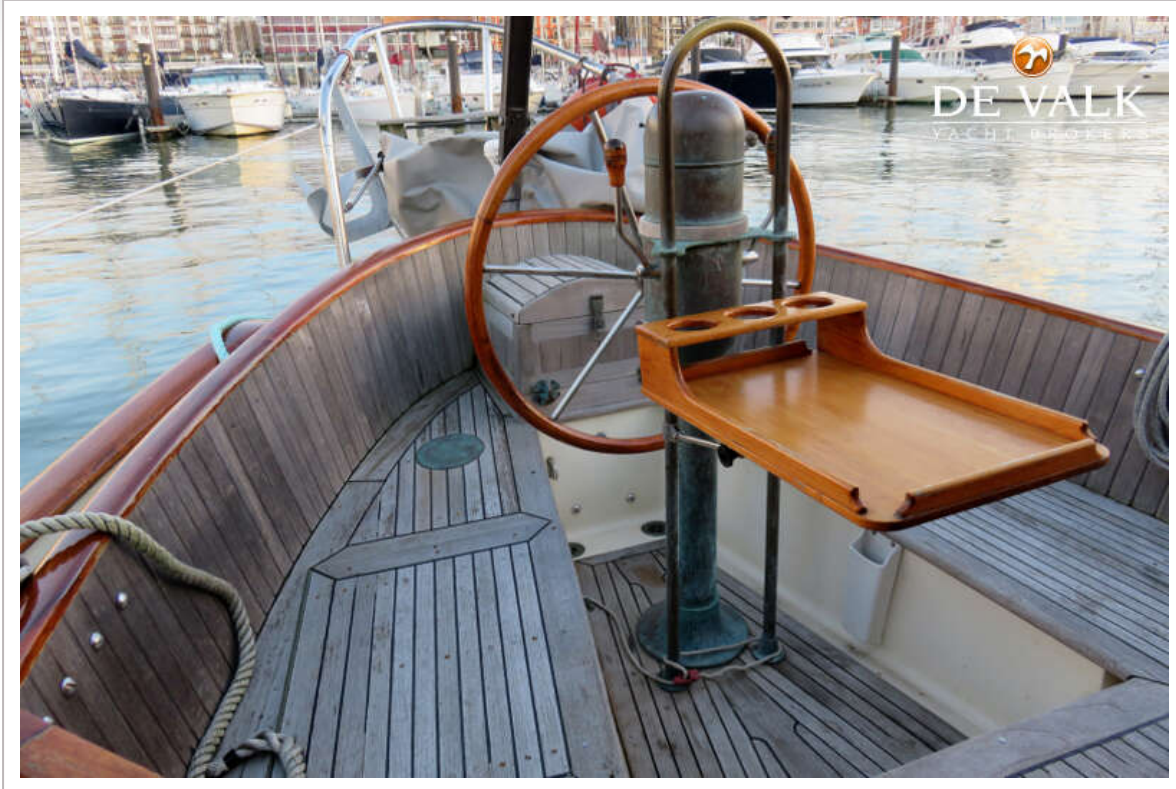


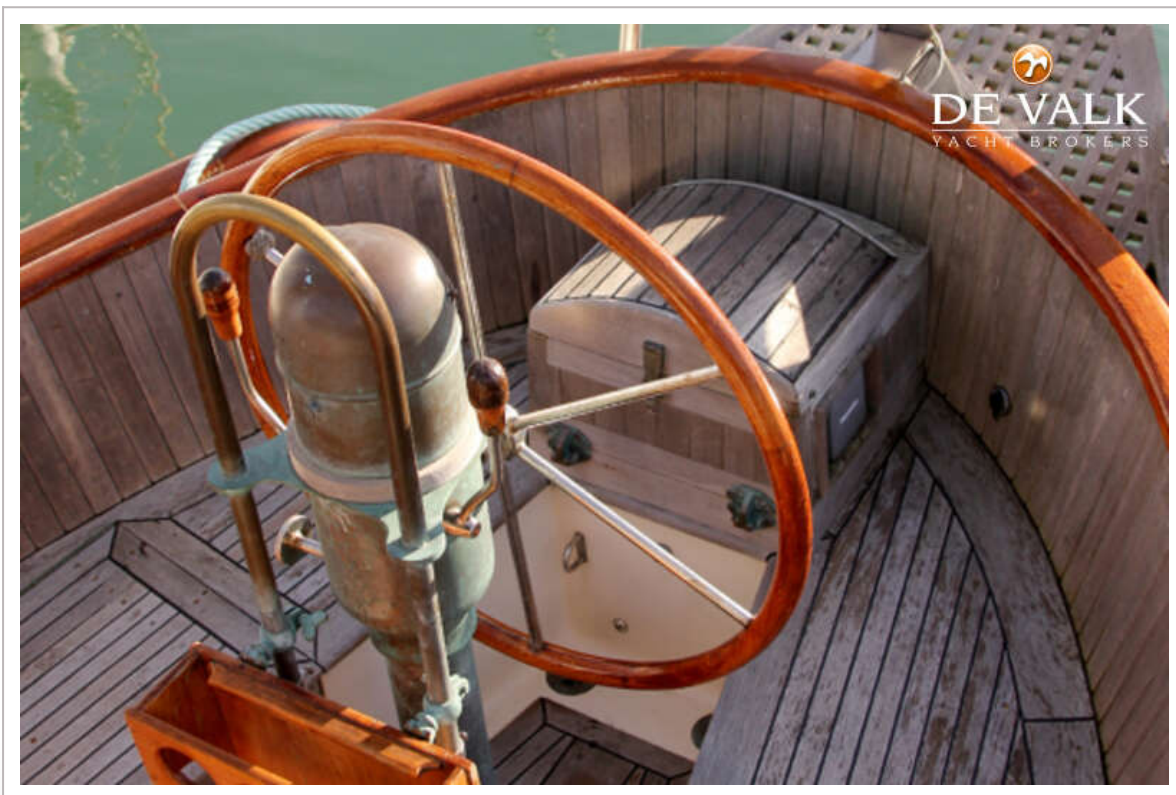




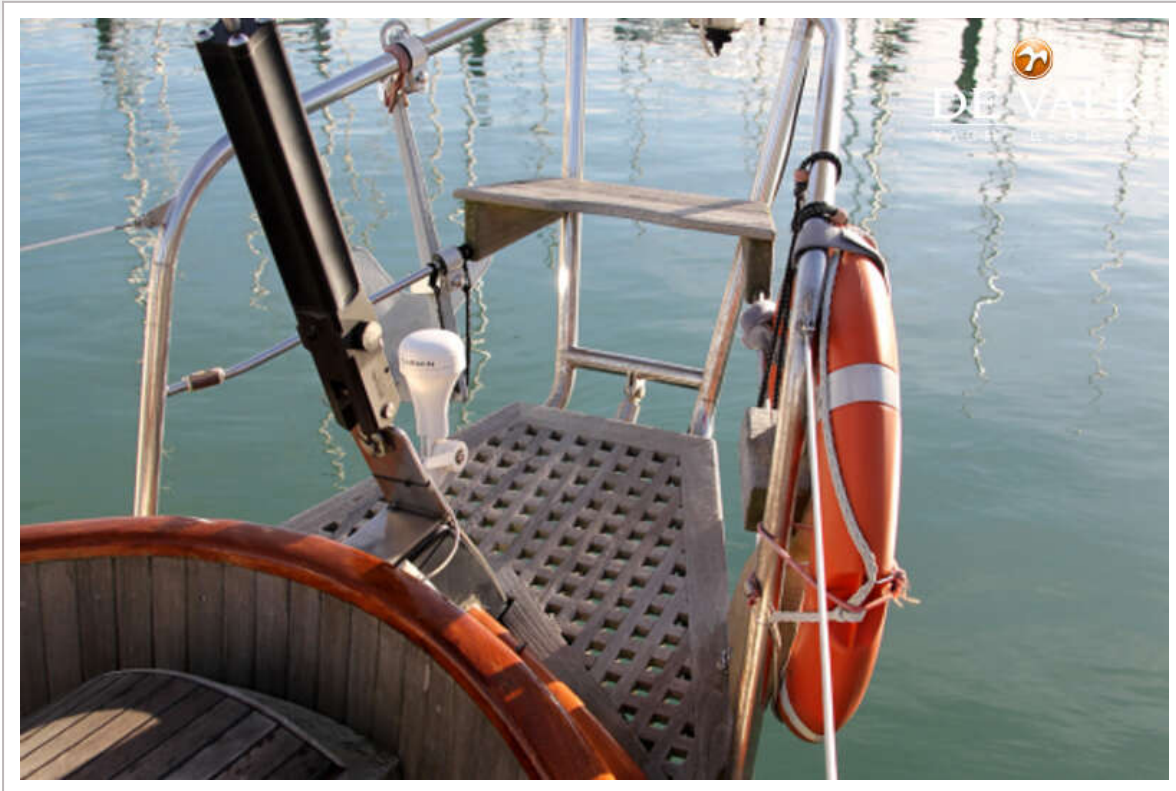


HANS CHRISTIAN 38

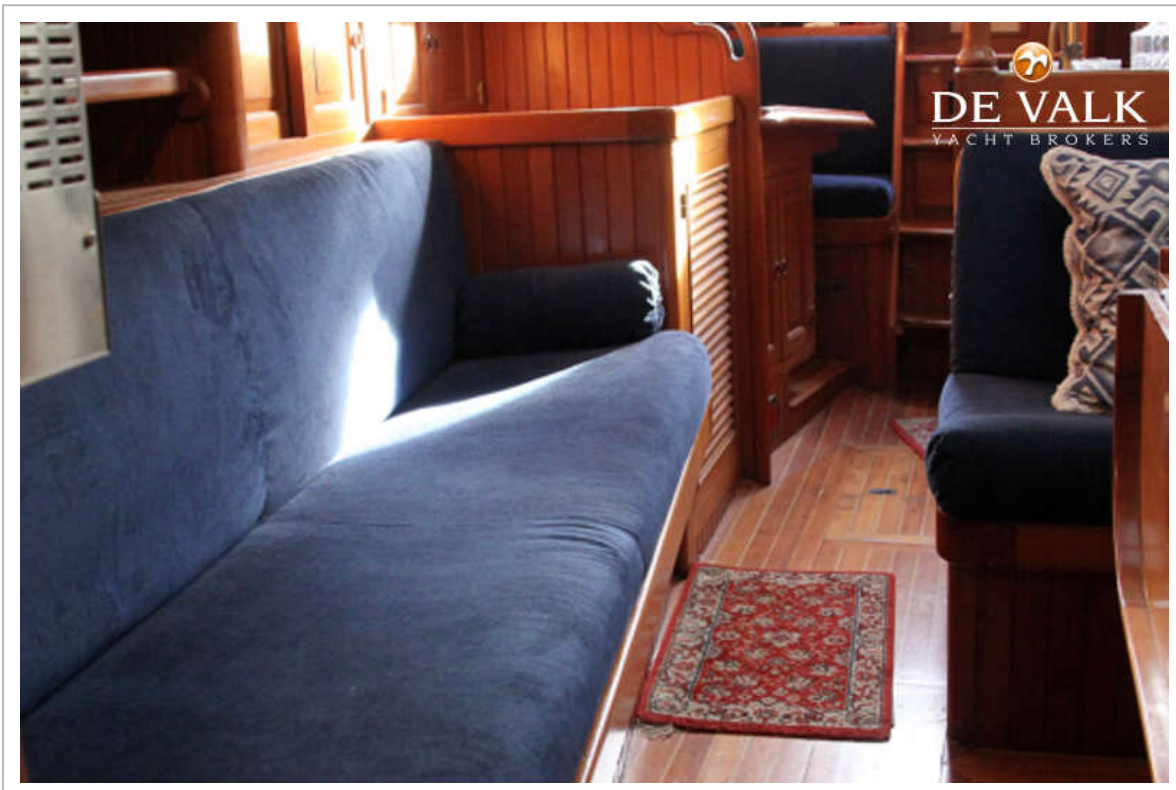
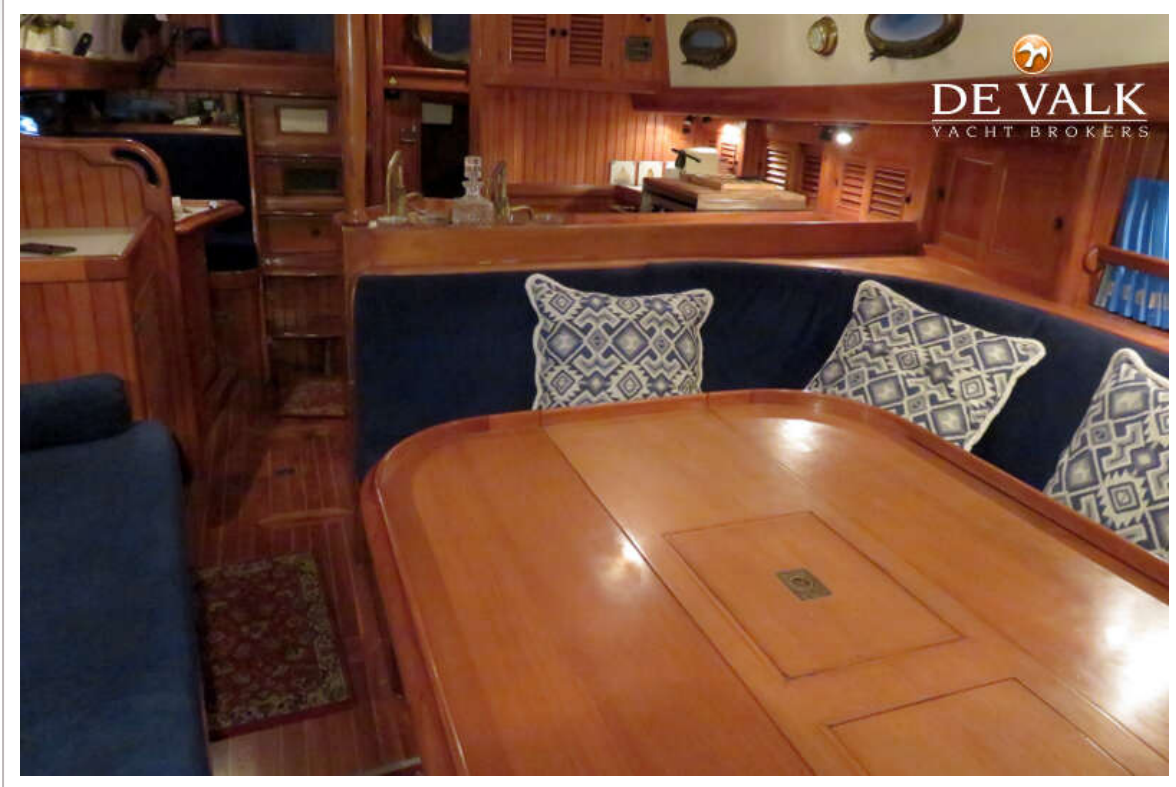




HANS CHRISTIAN 38

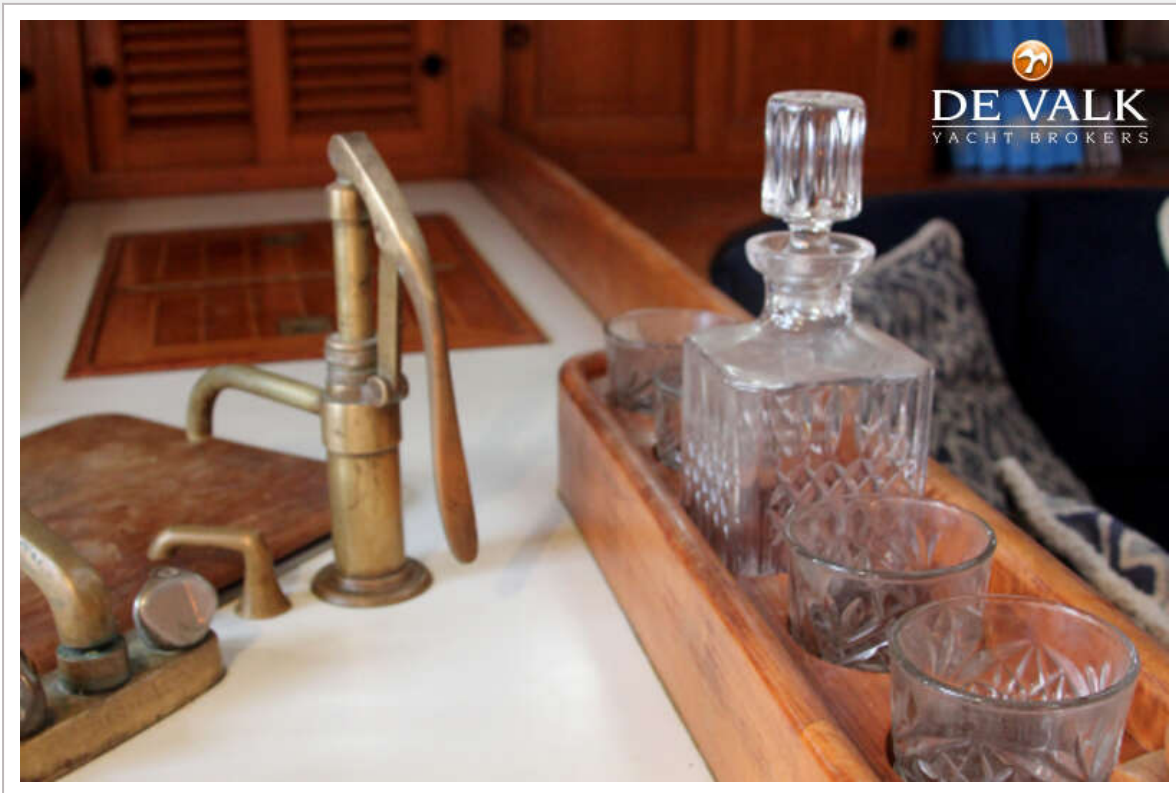


HANS CHRISTIAN 38

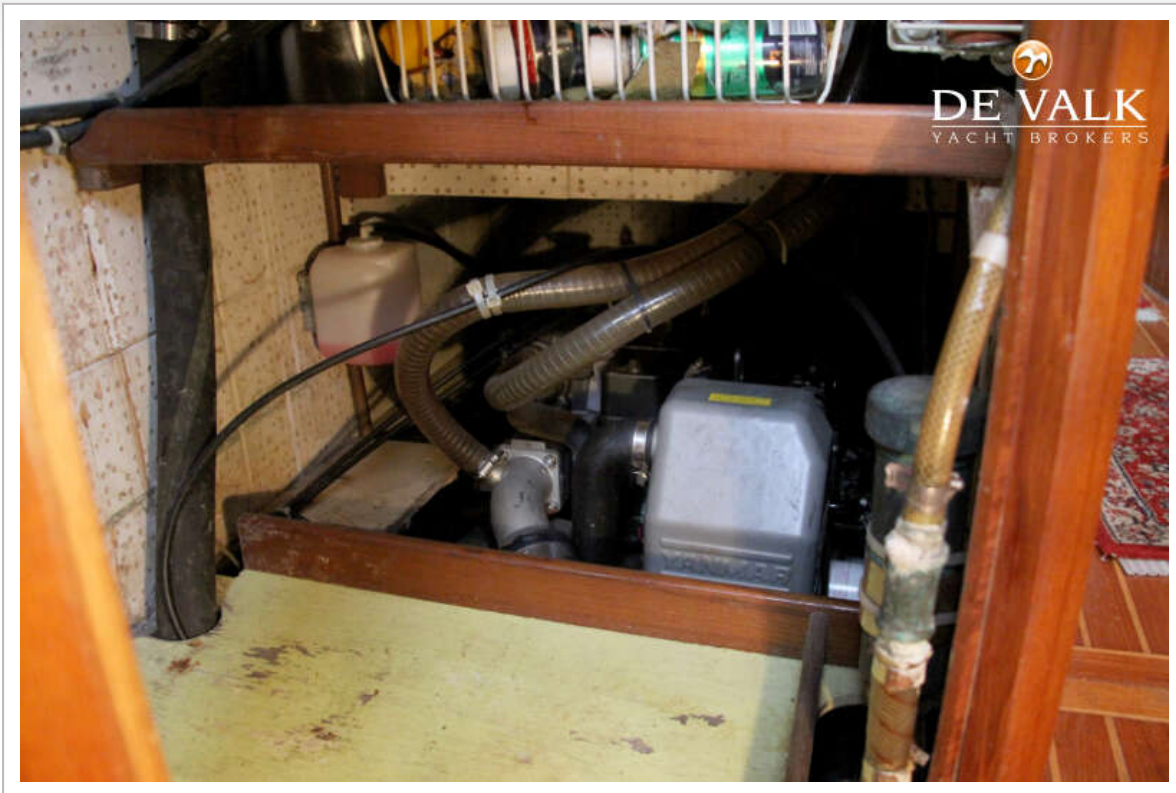


HANS CHRISTIAN 38









HANS CHRISTIAN 38

