



DE VALK
YACHT BROKERS



COMFORTINA 42



DE VALK
YACHT BROKERS

COMFORTINA 42

BROKER'S COMMENTS

One of the finest Comfortina's 42 in the world, This exceptional vessel was already loaded with most desirable options when it left the yard in Sweden, such as a removable cutter-stay, extra fuel and water tank, larger battery stock etc. Perfectly maintained comfortable, fast, safe luxurious cruiser/racer, a trueblue water cruiser for long voyages and short handed regattas.

Johan Nooitgedagt

SPECIFICATIONS

Dimensions	12.86 x 3.85 x 2.10 (m)	Builder	Comfortbatar AB Arvika
Built	2003	Cabins	3
Material	GRP	Berths	8
Engine(s)	1 x Volvo Penta D2-55 diesel	Hp/Kw	55.00 (hp), 40.48 (kw)
Asking price	€ 169.000 (VAT Paid)	Lying	at sales office

CONTACT

Sales office	De Valk Hindeloopen	Telephone	+31 514 52 40 00
Address	Oosterstrand 1 8713 JS Hindeloopen The Netherlands	E-mail	hindeloopen@devalk.nl

DISCLAIMER

These particulars are given in good faith as supplied but cannot be guaranteed.



GENERAL

Model	COMFORTINA 42
Type	sailing yacht
LOA (m)	12,86
LWL (m)	11,50
Beam (m)	3,85
Draft (m)	2,10
Air draft (m)	19,10
Headroom (m)	2,00
Year built	2003
Builder	Comfortbatar AB Arvika
Country	Sweden
Designer	Thomas Bern
Displacement (t)	9,2
Ballast (tonnes)	lead 3.1
CE norm	A
Hull material	GRP
Hull colour	white
Hull shape	round-bilged
Keel type	fin keel
Superstructure material	GRP
Rubbing strake	stainless steel
Deck material	GRP
Deck finish	cork Factory fitted
Superstructure deck finish	non-skid moulded in
Cockpit deck finish	cork Factory fitted
Antifouling (year)	2022
Window frame	aluminium
Window material	tempered glass
Deckhatch	yes
Fuel tank (litre)	stainless steel 150 ltr.



Fuel tank 2 (litre)	stainless steel 100 ltr.
Level indicator (fuel tank)	2x
Freshwater tank (litre)	stainless steel 2x 200 ltr.
Level indicator (freshwater)	2x
Blackwater tank (litre)	stainless steel 2x 60 ltr.
Blackwater tank extraction	deck extraction + uw line
Wheel steering	mechanical Whitlock
Emergency tiller	yes
More info on hull	Rigidity of the hull reinforced with the help of Dick Koopmans.

ACCOMMODATION

Cabins	3
Berths	8
Interior	teak
Floor	teak and holly
Saloon	yes
Headroom saloon (m)	2 mtr.
Heating	diesel ducted hot air Webasto doe not work
Navigation center	yes
Chart table	yes
Aft Cabin	2x
Galley	yes
Countertop	corian
Sink	stainless steel
Cooker	calor gas
Oven	In cooker
Fridge	Coolbox
Hot water system	220V + engine
Water pressure system	electrical
Manual and/or foot pump	yes
Owners cabin	v-bed



Bed length (m)	1,95 mtr.
Wardrobe	hanging and shelves
Bathroom	en suite
Toilet	Jabsco
Toilet system	manual
Wash basin	yes
Shower	yes
Guest cabin 1	double bed Aft cabin
Bed length (m)	1,95 mtr.
Wardrobe	hanging and shelves
Bathroom	shared
Toilet	Jabsco
Toilet system	manual
Wash basin	yes
Shower	yes
Guest cabin 2	Aft cabin
Bed length (m)	1,95 mtr.
Wardrobe	hanging and shelves

MACHINERY

No of engines	1
Make	Volvo Penta
Type	D2-55
HP	55
kW	40.48
Fuel	diesel
Year installed	2002
Maximum speed (kn)	7
Cruising speed (kn)	6
Consumption (l/hr)	3
Engine cooling system	freshwater heat exchanger



Drive	sail-drive
Bowthruster	electric
Manual bilge pump	yes
Electric bilge pump	yes
Start battery	yes
Service battery	yes
Bowthruster battery	yes
Windlass battery	yes

RIGGING

Rigging	fractional
Standing rigging	wire Last checked 2022, all sheeves replaced then
Brand mast	Seldén
Material mast	aluminium
Spreaders	2 sets
Keel stepped mast	yes
Mainsail	44 M2 and 2 reefs, De Vries Sails with Dutchman for ease of stor
Mainsail cover	2011
Battcars	Bearings replaced 2022 and additional car added
Fully battened mainsail	yes
High aspect	roll High aspect with vertical slats 2013 Hagoort, 37m2 offshore performance C3L cross cut laminate
Genoa I	58 M2
Genoa II	51 M2
Genoa III	41 M2
Genoa furler	yes
Genoa cover	2011
Gennaker	With stripper de Vries Sails, just over 100m2
Spinnaker	118m2
Removable innerforestay	Including back stays
Stormjib	yes



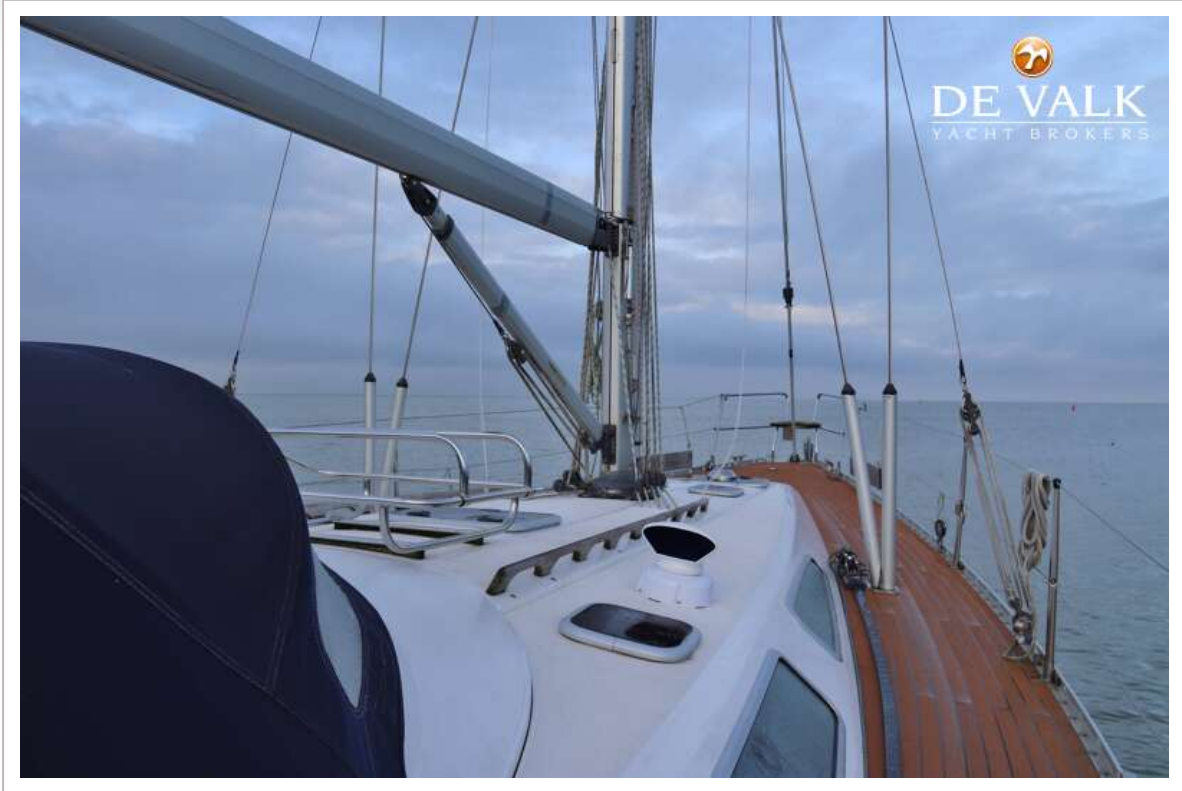
Backstay adjuster	yes
Boomvang	yes
Primary sheet winch	2x Andersen electric 2 speed ST 52
Secondary sheet winch	2x Andersen 2 speed ST 46
Halyard winches	2 x Andersen 2 Speed ST 40
Extra info	Sails condition: HA 7 of 10, main 6 of 10, genacker 8 of 10,



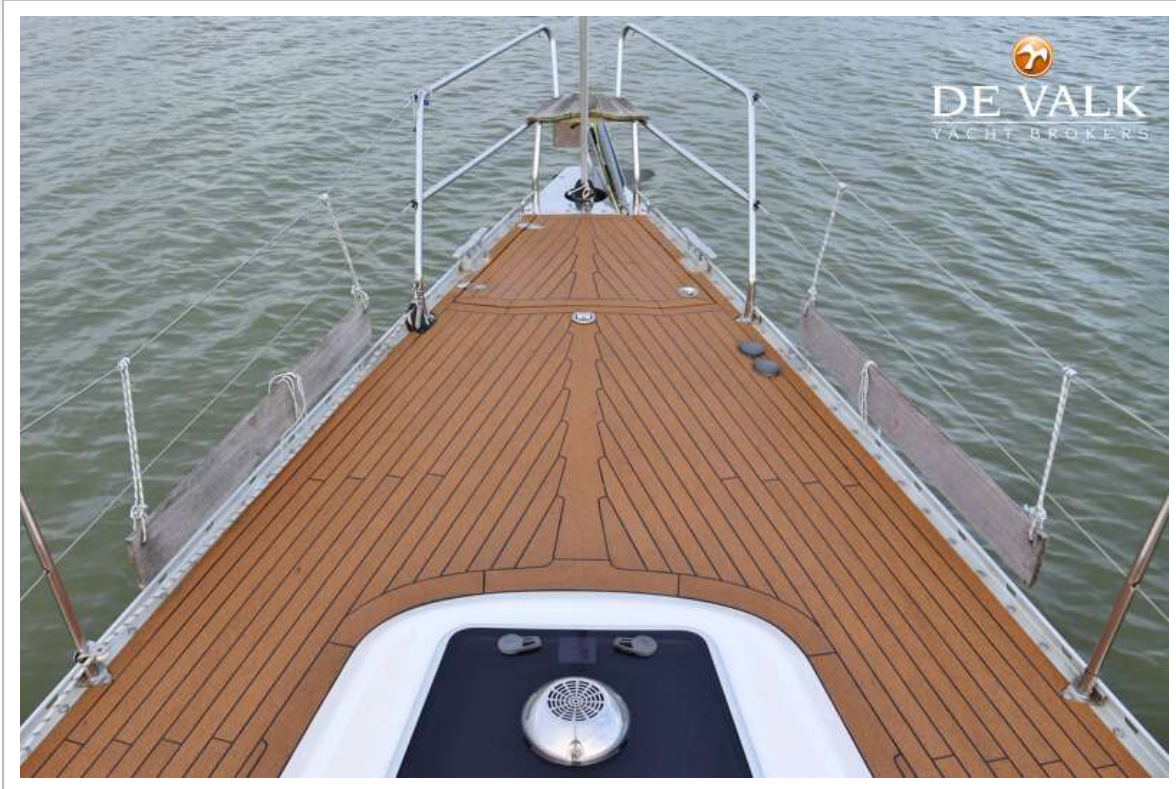
COMFORTINA 42



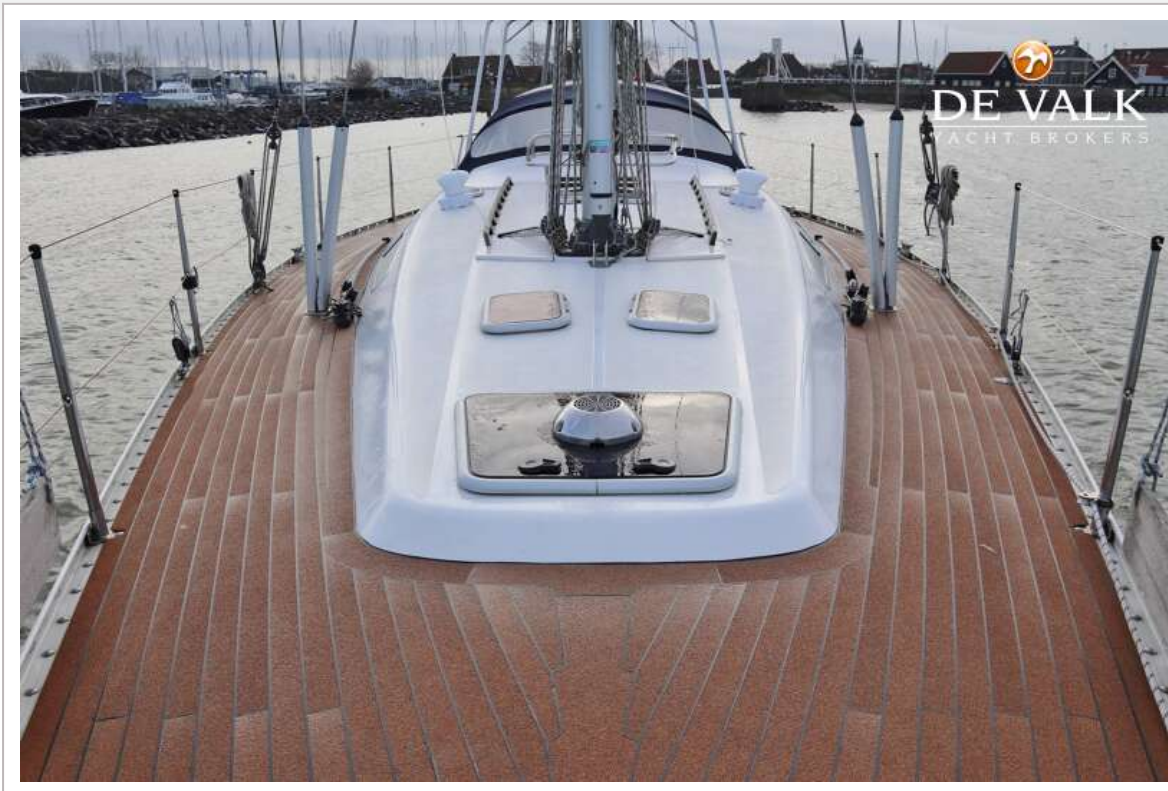
COMFORTINA 42



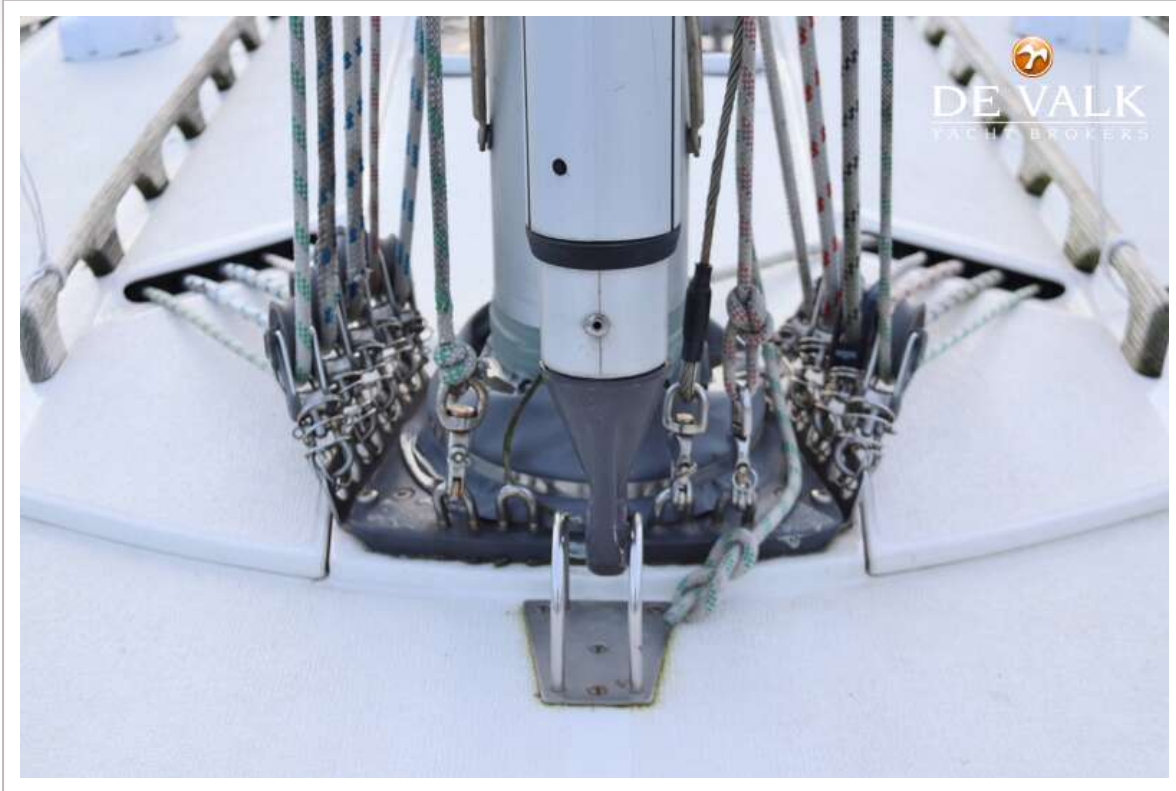
COMFORTINA 42



COMFORTINA 42



COMFORTINA 42



COMFORTINA 42



COMFORTINA 42



COMFORTINA 42



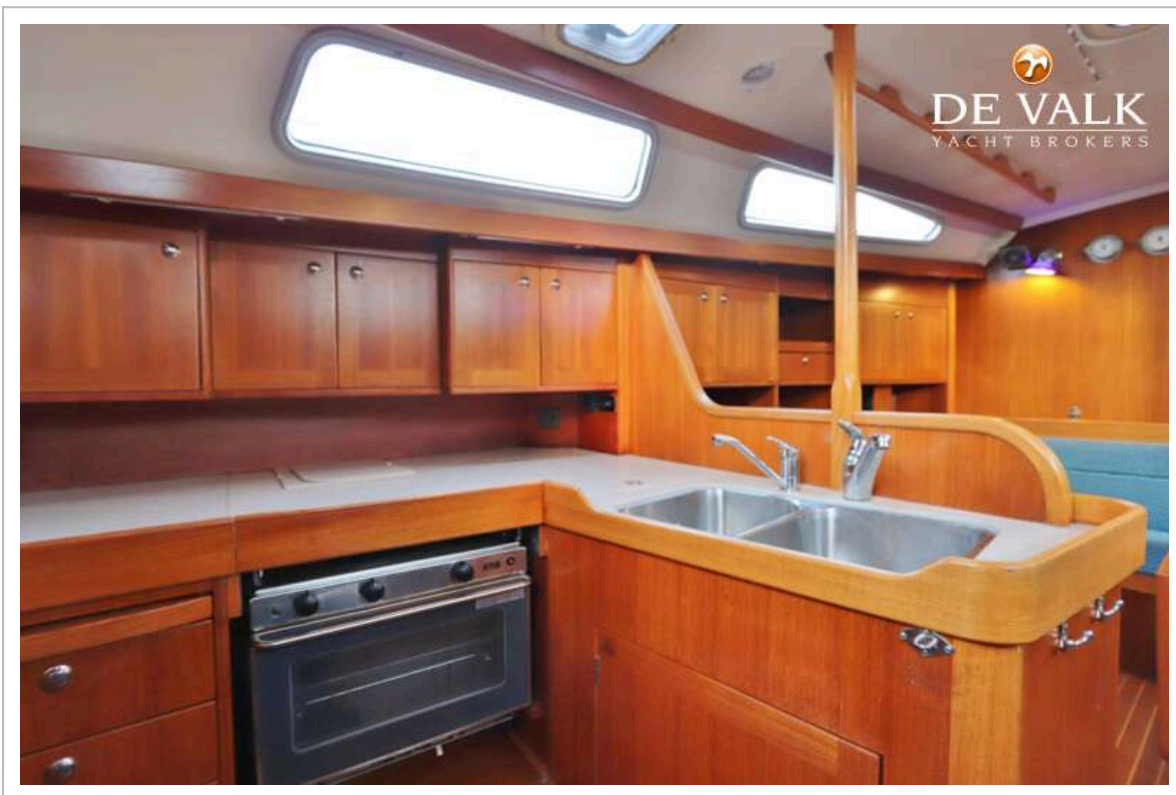
COMFORTINA 42



COMFORTINA 42



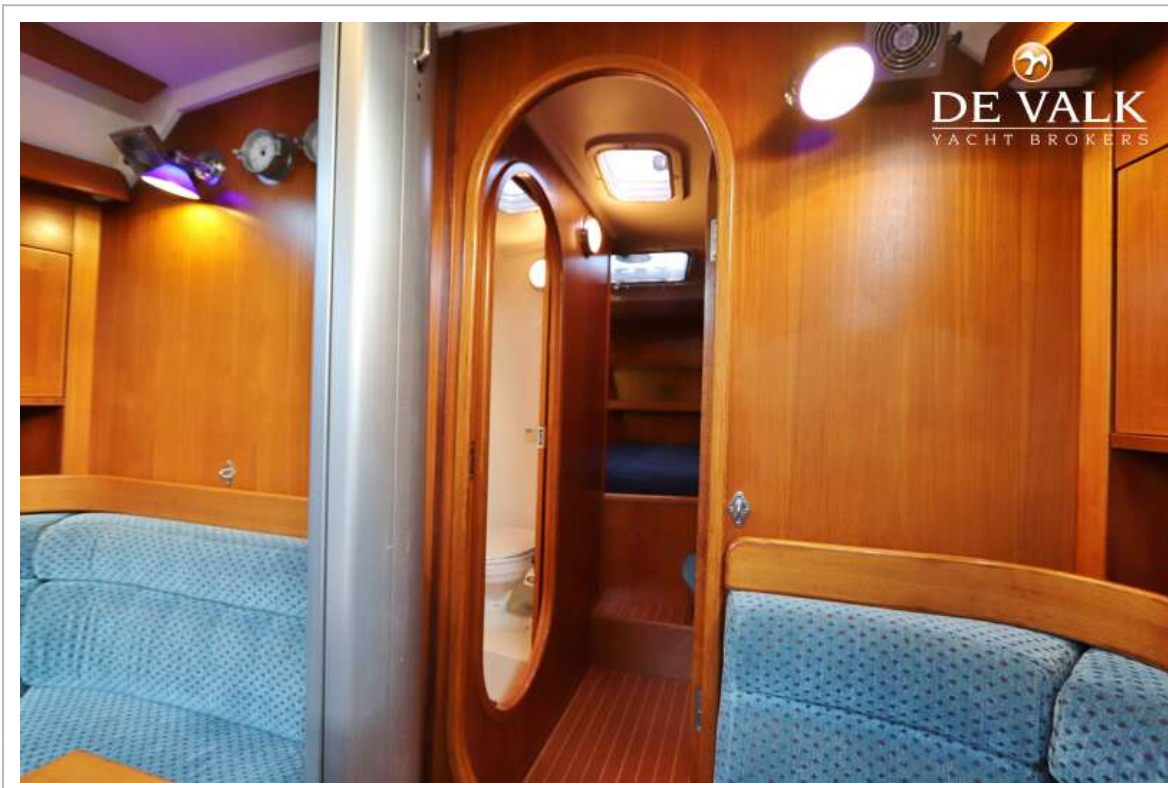
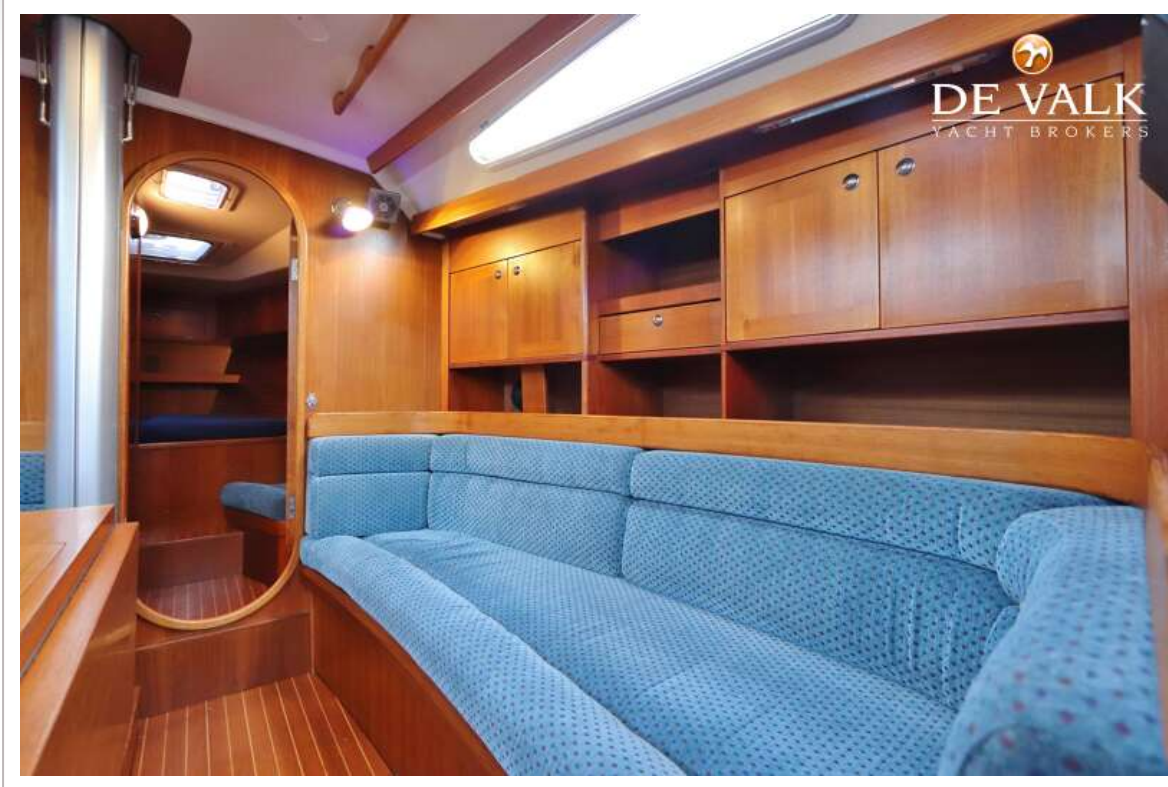
COMFORTINA 42



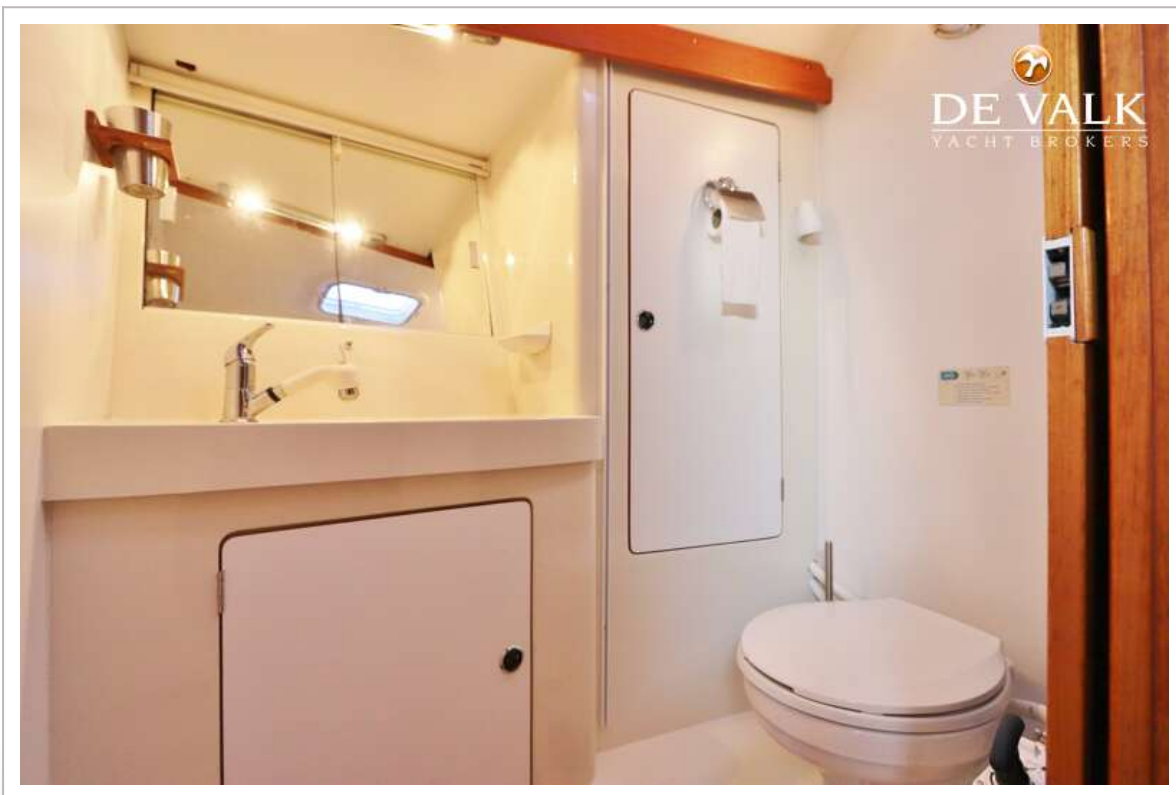
COMFORTINA 42



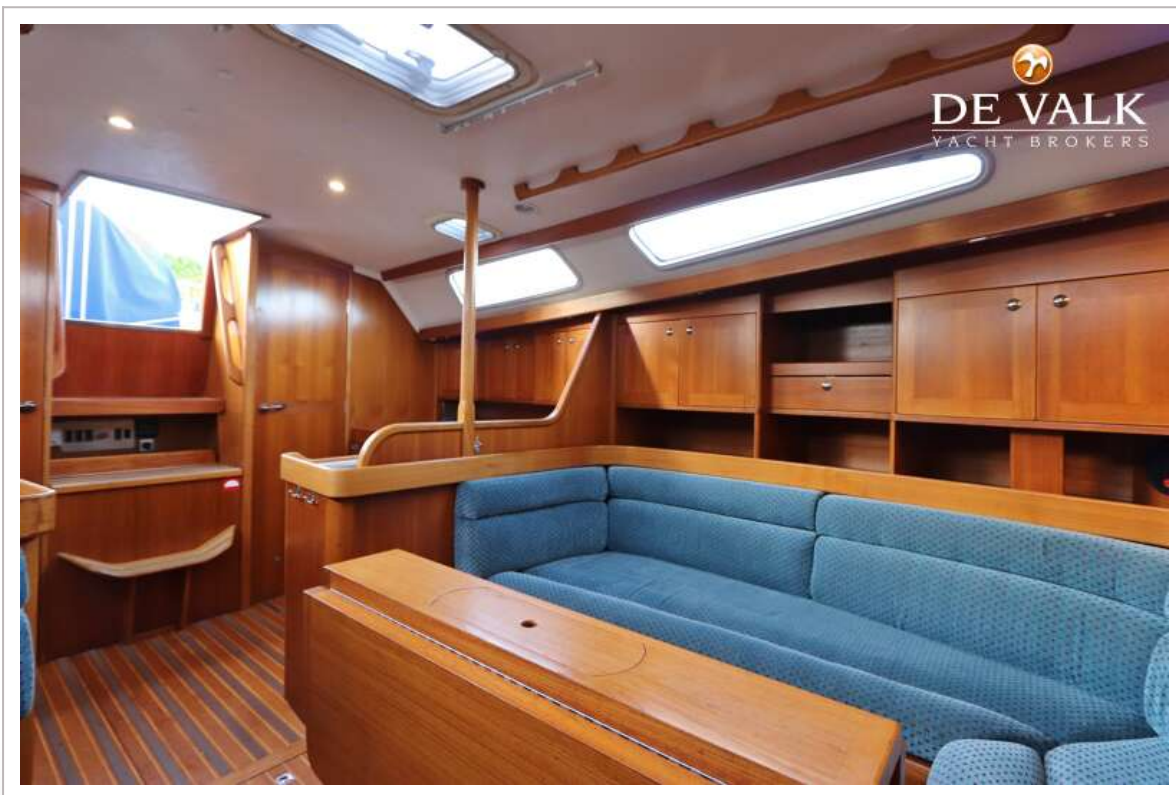
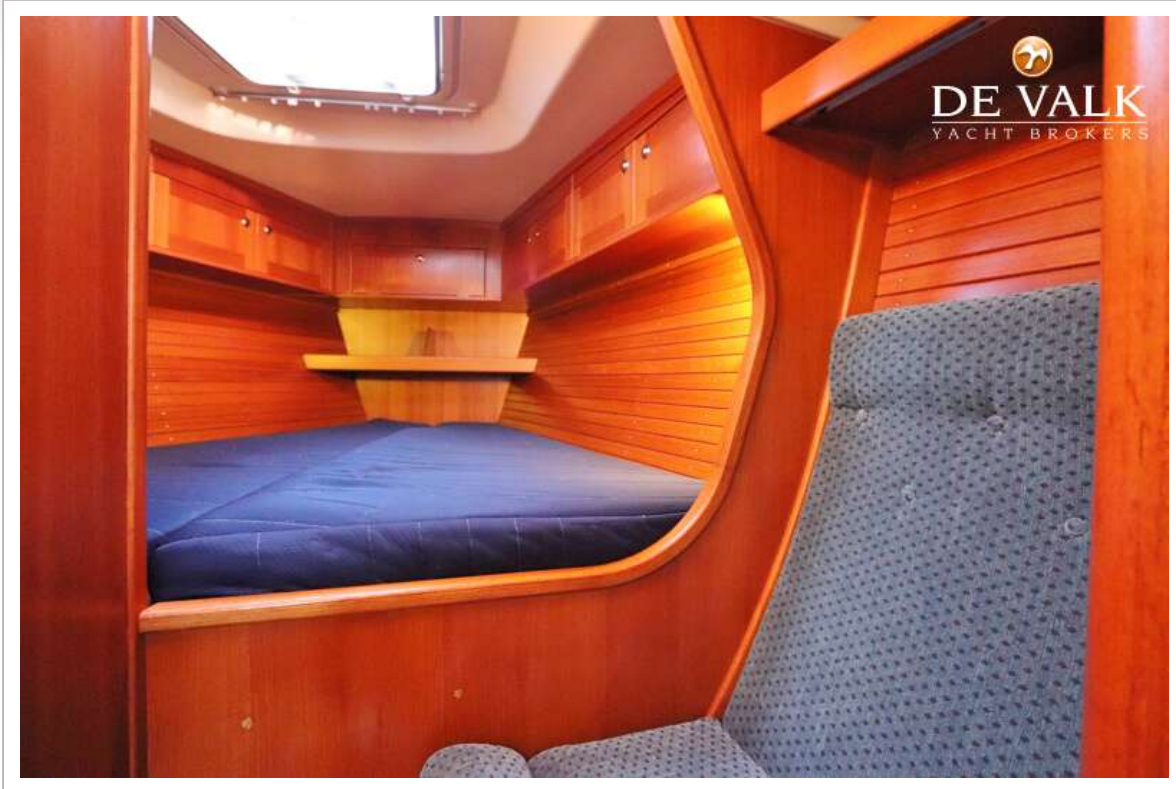
COMFORTINA 42



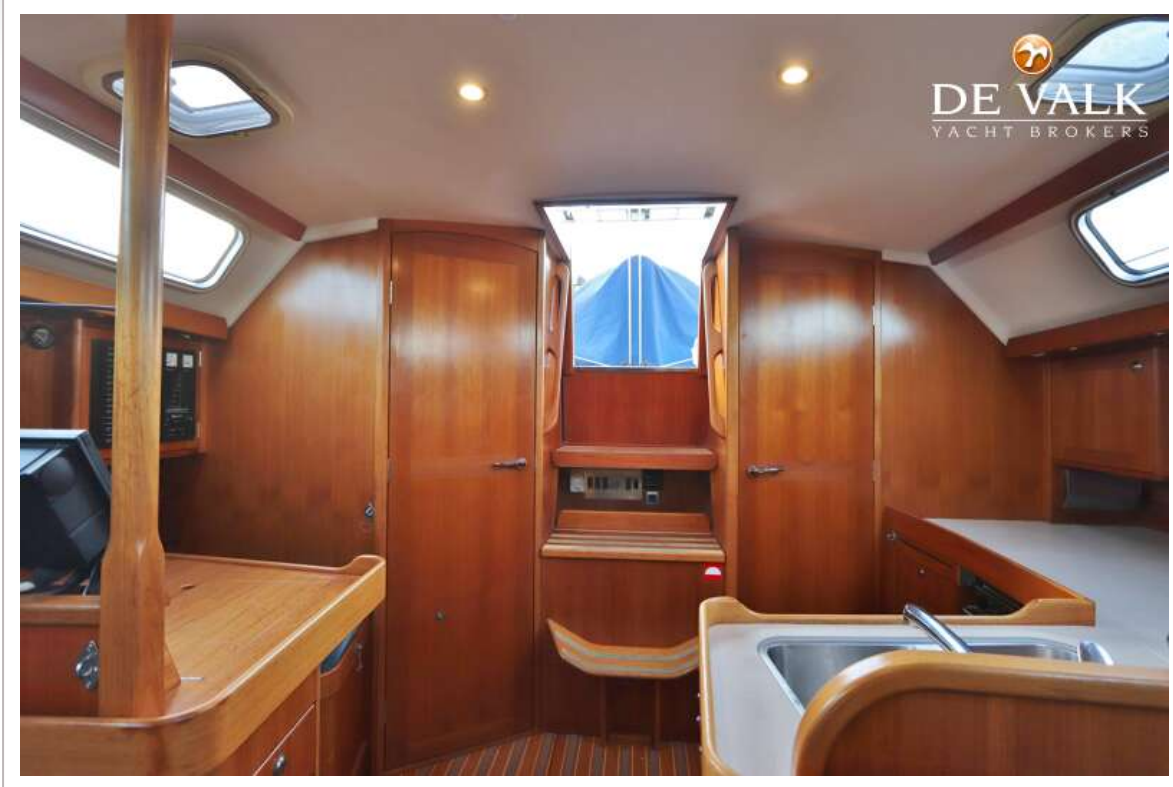
COMFORTINA 42



COMFORTINA 42



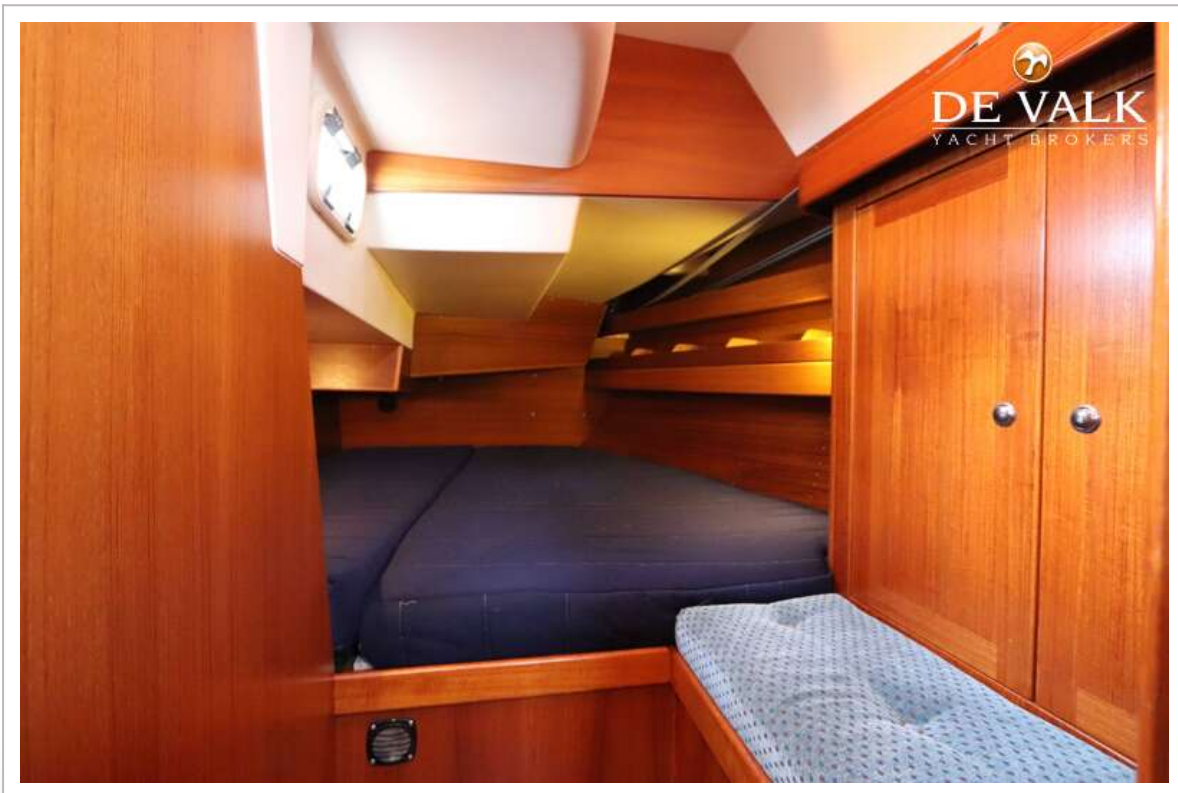
COMFORTINA 42



COMFORTINA 42



COMFORTINA 42



COMFORTINA 42

